


# The Key

A KAPPA KAPPA GAMMA PUBLICATION



## *Wherever Life Leads You ... Kappa Is There*

— P. 10  
Surviving Mommyville ...  
Tips from the Trenches

— P. 14  
Haven't Joined Your  
Alumnae Association?  
Find Out What  
You're Missing!

— P. 18  
Coping with the  
Aftermath of a High  
School Shooting





VOLUME 120, No. 3  
FALL 2003

*The Key* is the first college women's fraternity magazine, published continuously since 1882.

#### EDITORIAL BOARD

Fraternity Vice President  
**Priscilla Murphy Gerde**, *Purdue*

Editorial Board Chairman  
**Marilyn Nichols Bullock**, *Kansas State*

Editor  
**Jenny Struthers Hoover**, *Bowling Green*

Associate Editor  
**Lois Catherman Heenehan**, *Adelphi*

Profiles Editor  
**Julie Kroon Alvarado**, *Arizona State*

Alumna News Editor  
**Ann Graham Schnaedter**, *Missouri*

Collegiate News Editor  
**Rachel Schoenberger**, *Florida State*

Assistant to the Editor  
**Allison Greiner**, *Ohio State*

---

Graphic Designer  
**Victoria McDonald**, *Q.V. Design*

#### SUBMISSION DEADLINES

Spring — November 1  
Summer — February 1  
Fall — May 1  
Winter — August 1

The Key (ISSN 1063-4665) is published quarterly by Kappa Kappa Gamma Fraternity, 530 E. Town St., Columbus, OH 43215. Printed in the United States of America, copyright Kappa Kappa Gamma Fraternity 2003. Subscription price is \$3.

Preferred periodical postage paid  
at Columbus, Ohio

POSTMASTER:

Send address changes to:

The Key  
P.O. Box 308  
Columbus, OH 43216-0308

# CONTENTS

## departments

### 2 President's Message

Things of value are built to last.

### 3 Fraternity News

Web site update, meet our Field Representatives, new and improved officer nomination process, officer directory and more.

### 22 Profiles

Meet **ALEXA POLETO**, *William and Mary*, a Fulbright scholar bridging cultures in Syria • **PAM MAPHIS LARRICK**, *West Virginia*, president and chief operations officer of McCann Relationship Marketing Worldwide • **JULIE GREENBERG JENKINS**, *Illinois*, cofounder and performer of The Midnight Circus.

### 28 Collegiate News

Service, scholarship and sisterhood at its best!

### 34 Accent on Alumnae

Lifelong members continue to make us proud!

### 45 In Memoriam

Honoring those we have loved and lost.

### 46 Foundation

Your generosity is our generosity.

### 50 Letters

Readers share their thoughts.

### 52 Reflections

Which women's fraternity was first?



College Fraternity  
Editors Association



National Panhellenic  
Editors Conference



## features



**PAGE 10**

### **Mommyville . . . A Lesson in Leadership**

Plus survival tips from Kappas like you!

**PAGE 14**

### **The Time of Your Life**

"We who come from widely separated chapters ..." find comfort and support through alumnae association membership.



**PAGE 18**

### **A School Shooting Leaves Unanswered Questions**

A young educator shares her story.



### **On the Cover**

*The Key* thanks JANE KETCHAM STEINER, *Miami (Ohio)*, and her son for appearing in this photograph. Thank you to CHERIE WILLIAMS LUCKS, *Ohio State*, for the use of her beautiful English garden. Photograph by Laura Sifferlin Photography.



## Mission Statement of *The Key*

*The Key* of Kappa Kappa Gamma links each member with the Fraternity. The mission of *The Key* is:

- To inform, inspire and challenge
- To sustain and nurture membership loyalty and interest
- To recognize the accomplishments of individuals, groups, the Fraternity and its Foundation
- To provide a forum for an exchange of information and opinion
- To be a permanent record.

## How to Contact Us

Send information and photographs to:

Kappa Kappa Gamma  
Fraternity Headquarters  
JENNY STRUTHERS HOOVER  
Editor  
P.O. Box 38  
Columbus, OH  
43216-0038

Tel: 866/KKG-1870  
Fax: 614/228-7809  
E-mail: [jhoover@kappakappagamma.org](mailto:jhoover@kappakappagamma.org)

Web site: [www.kappa.org](http://www.kappa.org)

## Rose McGill Magazine Agency

800/KKG-ROSE  
(800/554-7673)

## Official Merchandiser

THE KEY SOURCE  
800/441-3877 (orders only)



## president's message

# Things of Value Are Built to Last

**A**cknowledged as one of America's distinguished small colleges, Monmouth College — birthplace of Kappa Kappa Gamma and Pi Beta Phi — held a yearlong celebration of its sesquicentennial during the 2002-2003 academic year. For 15 decades, Monmouth has continued to provide its students with rich traditions, strong philosophies and solid educations.

From this rich environment came the spirit necessary to launch not one but two of the oldest women's fraternities. Kappa's Founders were similar to those of Pi Beta Phi — common heritage of Monmouth College, common exposure to Greek and Latin studies and philosophies, common mid-Western upbringing. These factors lent themselves to a solid foundation for fertile thinking on the part of those young female students — our Founders.

Today, Kappa and Pi Phi share 120 campuses where both organizations have established chapters. What criteria have given our organizations the staying power not only to

continue, but also to grow in number of chapters and members?

A research initiative collectively sanctioned by the 92 national and international men's and women's fraternities found five significant benefits of fraternity and sorority membership.

1 – Students who belong to a fraternity or sorority are more likely to stay in college than other students.

2 – College graduates who belong to a fraternity or sorority tend to be more successful financially than other college graduates.

3 – Colleges receive more gifts and in greater amounts from fraternity and sorority alumni.

4 – Student members of Greek-letter organizations tend to participate more fully in extracurricular campus activities than do other students. Fraternity and sorority members also nurture their "social capital" or involvement in the community activities.

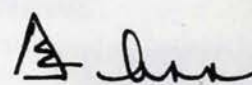
5 – Member alumni gave higher ratings than other alumni to their college social experience.

In addition to these findings, many fraternities and sororities have established foundations that offer generous financial assistance to members so they may stay in school at their host institution to finish their education.

Today, we reflect on the vision of our Founders, which still guides our organization. Friendships, a desire to be of service to others and to our communities, a thirst for learning, and always striving to become a more principled individual are timeless values.

Coming together to celebrate our founding — October 13, 1870 — signifies a commitment to those founding principles. For 133 years, our values have shown that Kappa Kappa Gamma is built to last.

Loyally,



ANN STAFFORD  
TRUEDELL  
Ohio Wesleyan  
Fraternity President



## Congratulations to Longtime Members!

This year, a total of 1,311 Kappas are eligible for 50-Year pins; 567 are eligible for 65-Year pins and 107 are eligible for 75-Year pins. Congratulations!

Information about ordering pins will be sent to qualified members and to alumnae associations. For more information, contact the Membership Services Department at Fraternity Headquarters at 866/KKG-1870 or [kkghq@kappa.org](mailto:kkghq@kappa.org).

## 2004 Convention Will Be Held in Kansas City, Mo.

Mark your calendar for Kappa Kappa Gamma's 65th Biennial Convention, Saturday, June 26, through Wednesday, June 30, 2004. The convention site is The Westin Crown Center located in downtown Kansas City, the home of Hallmark Cards Inc., and just minutes away from irresistible shopping. Enjoy fun-filled days of Fraternity business, educational programs and friendship. More information will be provided in the Winter 2003



## Check Out Kappa's New and Improved Web Site!

The official Web site, [www.kappa.org](http://www.kappa.org), has a new look and improved functionality. Here is a guide to navigating Kappa Kappa Gamma's redesigned Web site.

### New Log-in Procedure

As users of the previous Web site may recall, a member needed her "member" number in order to log in to the members-only area of the site. The new site will allow more public access to general Fraternity information. Pages that are identified as members-only will require a member to log in.

Please note that your former user name and password have **not** been transferred to the new site. You will need to create a new user name and password. **The first time you log in to the new site, you will need to use your "member" number as your user name and your last name as your password.** The format for the member number is important. Please do not use any zeros that appear before the first or second set of numbers. Your personal copy of this issue of *The Key* has the correct format for your member number. (See the example below.)

Once you are logged in, the site will immediately prompt you to create a new user name and password. Please create a user name and password that you will remember.

#BXNQFQR \*\*\*\*\*5-DIGIT 43216  
#2980 723# S1 P1  
15-9876  
KATIE KAPPA  
KAPPA KAPPA GAMMA HQ  
PO BOX 38  
COLUMBUS OH 43216-0038

*This is  
your member  
number.*

### More Public Content

One of the significant changes to the new site is the amount of information available to nonmembers. We have moved significant amounts of content out of the members-only area and made it available to the public. As always, Fraternity forms and other proprietary documents are protected and will require a member to log in to utilize that information.

### New Functionality

Two new features have been added to the site with more to come in future phases. In the left navigation bar you will find a link for "Printer-Friendly Version" and

"E-mail a Friend." These two functions allow you to print a page of the site in a way that formats correctly for a printer. The e-mail feature allows you to e-mail a link, a page or an article from the Kappa Web site to another person. Keep in mind that if you send a page or article that is in the members-only side, it will require the recipient to log in as a member in order to view the page or article.

### Future Functionality

There are several phases to the Web site development project. Each phase will take about six months to complete. Now that Phase I is complete (including the new site design and the functionality mentioned above), we are preparing for Phase II, which will include the necessary components to allow members to register and pay for Convention online and update their contact information in the searchable directory. The current plan for Phase III includes the ability for chapters and associations to create and update a local Web site for members. The Fraternity Council estimates that Phase III will be ready next summer.

As the Web Site Development Team continues to improve [www.kappa.org](http://www.kappa.org), your suggestions are welcome. Please contact AMY BENBOW SMITH, North Texas, Web Site Coordinator, via e-mail at [amybenbowsmith@aol.com](mailto:amybenbowsmith@aol.com) or Sherri Schmitz Niekamp, Multimedia Designer, at [sniekamp@kappakappagamma.org](mailto:sniekamp@kappakappagamma.org) with questions or ideas.



Kappa Kappa Gamma's new home page. To see more, visit [www.kappa.org](http://www.kappa.org).



## Fraternity Officers Trained and Ready to Serve

The Associate Council Seminar (ACS) was held this past June in Columbus, Ohio. The ACS provides leadership and education training for Province Officers and Advisory Board/Housing Committee members. Officer responsibilities and Fraternity policies and procedures were some of the topics discussed. A tour of Fraternity Headquarters and the Heritage Museum, complete with introductions to Headquarters staff, was a highlight of the weekend.



ANN KELSAY SMALL, Wyoming, RDA Region 2; DEBBIE VOLK COOK, Ohio Wesleyan, RDA Region 5; CAROL GEORGE SANDERS, UC Northridge, Director of Alumnae; and CAROLINE POOLE CAMERON, Florida State, RDA Region 6; take a break during a workshop at ACS.

## The 2004 Alumnae Directory Is in Progress!

Kappa Kappa Gamma, along with the Bernard C. Harris Publishing Company Inc., is working on the 2004 Alumnae Membership Directory. By verifying or changing your member profile online at [www.memberconnections.com/update](http://www.memberconnections.com/update) or calling toll-free 888/346-6422, you can help keep our membership data current.

The directory will give Kappas a complete reference of all Kappa Kappa Gamma members. Harris Publishing has a commitment to protecting the privacy and ensuring the integrity of the information collected.

## Kappa Needs Your Support!

**WHO?** The more than 100,000 alumnae who currently do not pay dues.

**WHY?** To support the development and distribution of educational programs to collegians and alumnae, continued improvement in technology and member services including *The Key* and the Web site.

**WHEN?** Today and into the future.

**WHERE?** To Kappa Kappa Gamma Fraternity Headquarters, P.O. Box 38, Columbus, Ohio 43216-0038

**HOW?** By sending \$10 alumna dues annually, payable by check or credit card. (See form below.)

If you have paid dues to an alumnae association, your alumna dues are paid. If you know of a non-participating alumna, encourage her to send in her alumna dues. Being a "Kappa for a lifetime" is a privilege and a responsibility — your support will keep Kappa Kappa Gamma strong.

## Kappa Can Count on Me!

Name: (first, maiden, last): \_\_\_\_\_

Address: \_\_\_\_\_

City: \_\_\_\_\_ State/Province: \_\_\_\_\_ Postal Code: \_\_\_\_\_

E-mail: \_\_\_\_\_

Chapter & Initiation Year: \_\_\_\_\_

☐ Enclosed is my check for \$10 payable to Kappa Kappa Gamma Fraternity for alumna dues.  
(Dues are not deductible for federal tax purposes.)

☐ Please charge my VISA/MasterCard (circle one)  
My credit card # is: \_\_\_\_\_ Exp. Date: \_\_\_\_\_

☐ I would like to be contacted by the nearest alumnae association.

Signature: \_\_\_\_\_



# Meet Our 2002-2003 Field Representatives

## Traveling Consultants



**ADRIENNE BETZEN**, *New Mexico*  
MAJOR: creative writing  
CHAPTER LEADERSHIP: President;  
Marshal; Social Chairman;  
"Something of Value" participant  
ACTIVITIES: Greek ambassador,  
lobo ambassador, cheerleader



**KELLN ZIMMER**, *Texas A&M*  
MAJOR: English  
CHAPTER LEADERSHIP: President, Education  
Chairman, New Member Chairman,  
"Leader-Shape" participant  
ACTIVITIES: student newspaper columnist,  
Eisenhower Leadership Development Program



**ELIZABETH (LIZZIE) FRASER**, *Nebraska*  
MAJOR: psychology  
CHAPTER LEADERSHIP: Vice President  
of Organization, Scholarship  
Chairman  
ACTIVITIES: Greeks Promoting  
Positive Attitudes, Big Brothers Big  
Sisters, eating disorders prevention  
and education



**FELICITY MEU**, *UC Berkeley*  
(Second-year Traveling Consultant for *Eta Theta*, Harvard)  
MAJOR: geography  
CHAPTER LEADERSHIP: Nominating Committee;  
Recruitment Chairman; Panhellenic: Judicial  
Committee; VP Recruitment  
ACTIVITIES: head guide for rafting program;  
student government



**DIANA GALE**, *North Carolina*  
MAJOR: business administration  
CHAPTER LEADERSHIP: President,  
Assistant Treasurer  
ACTIVITIES: Resident Housing  
Association, Young Democrats



**ANNA SUSAN BOYKIN**, *Mississippi*, to  
*ZETA UPSILON*, *Georgia Southern*  
(Second-year Chapter Consultant)  
MAJOR: elementary education  
GRADUATE STUDY: elementary education  
CHAPTER LEADERSHIP: New Member Chairman;  
Standards Committee; Assistant Marshal  
ACTIVITIES: Elections Commission; orientation  
leader; Order of Omega secretary



**REBECCA (BECKY) KINNEY**,  
*Washington*  
MAJOR: history  
CHAPTER LEADERSHIP: Panhellenic,  
Standards Committee  
ACTIVITIES: Husky Host, local  
congressional campaign



**COURTNEY RUSSELL**, *North Texas*, to  
*GAMMA EPSILON*, *Pittsburgh*  
MAJOR: fashion merchandising  
GRADUATE STUDY: higher education administration  
CHAPTER LEADERSHIP: Education Chairman,  
Recruitment Counselor  
ACTIVITIES: Order of Omega, Merchandising Inc.



**COURTNEY SAYTHER**, *DePauw*  
MAJOR: conflict studies  
CHAPTER LEADERSHIP: Education  
Chairman, New Member Chairman,  
Standards Committee  
ACTIVITIES: VP of Mortar Board,  
campus tour guide, soccer team



**KRISTIN WHITVER**, *Monmouth*, to  
*EPSILON*, *Illinois Wesleyan*  
MAJOR: public relations  
GRADUATE STUDY: business administration  
CHAPTER LEADERSHIP: Panhellenic Delegate,  
Scholarship Chairman, Vice President of Organization  
ACTIVITIES: Mortar Board, campus newspaper  
reporter



**JENNIFER STOLP**, *UC Davis*  
MAJOR: political science  
CHAPTER LEADERSHIP: Vice President  
of Organization, Panhellenic  
Delegate  
ACTIVITIES: Vice Chancellor's  
Advisory Committee, ASUCD  
Internal Affairs Commission

Traveling Consultants visit chapters in the United States and Canada providing training and support. Chapter Consultants receive a postgraduate scholarship at a specific college/university where they assist that chapter for one year. To apply, visit [www.kappa.org](http://www.kappa.org) or contact **SUSAN PILE**, *Miami (Ohio)*, Chairman of Field Representatives, at [kkghq@kappa.org](mailto:kkghq@kappa.org).



# Introducing the New Council and Regional Officer Nomination Process

A resolution was passed at the 2002 General Convention to review the Fraternity's nomination process to determine if an alternative approach might better serve the interests of the Fraternity and demonstrate a greater care for its members.

The Fraternity Council appointed a task force, under the leadership of JAN HARENBERG STOCKHOFF, *New Mexico*, chairman of the Long Range Planning Task Force. The task force began its work by reviewing the Fraternity *Bylaws* relating to the nominating process as well as all facets of the current process; including the composition of the Nominating Committee, the timeline currently used and the required paperwork (i.e. nomination and recommendation forms). In addition MARIAN KLINGBEIL WILLIAMS, *Missouri*, NPC Delegate, was able to survey other NPC groups, giving additional insight.

The Fraternity Nomination Process Task Force submitted the following recommendations that were approved by the Fraternity Council:

- The Fraternity *Bylaws* are appropriate for providing direction but flexible enough to allow the appropriate nomination process to occur.
- The composition of the Fraternity's Nominating Committee will remain unchanged at this time. The current committee makeup — one alumnae association delegate and one chapter delegate from each of the six regions — allows for 12 members who often feel even more committed to the Fraternity after their service on the committee.
- A new timeline will be used to accomplish the nominating process. The new timeline will allow the committee the time necessary to accomplish its work appropriately without the constraints of the Convention schedule. In addition, the emotions often linked with the nominating process at Convention would be greatly reduced.
- A call for nominations will be sent out in the fall of the second year of the biennium. Information and nomination forms will be available in the Fall and Winter issues of *The Key* and in the fall Chapter, Association and Advisory/House Board Mailings. In addition, the Web site will be utilized to provide information and a nomination form.

- Nominations are due to the Nominating Chairman by January 15, 2004.

- The Nominating Committee will meet at Headquarters in the late winter/early spring to review recommendations and prepare the slate of Fraternity Council and Regional positions.

- The final slate will be mailed out to the Kappa Family, chapter delegates, alumnae association delegates and the Advisory and House Boards one month before Convention.

- Nominations will be accepted from the floor of the Convention prior to election.

The new nomination process will go into effect immediately. Following Convention, the Fraternity Council will review the process to ensure that it is meeting the needs of our membership.

Now here is where you come in! We invite you to use the recommendation form on the following page to nominate Kappas you believe possess the experience and qualifications for a Fraternity position. Your support is so important to the future of our Fraternity. Won't you please take a moment to review the qualifications for each Fraternity position and submit your recommendations?

## Fraternity Council Qualifications:

A candidate should be an alumna in good standing of the Fraternity and have served the Fraternity within 10 years prior to election as a member of the Fraternity, Regional or Associate Council, as a chairman of a Fraternity Standing Committee or Special Committee, as a Fraternity Council Assistant or as a Traveling Consultant.

## Fraternity Council Positions:

- President
- Vice President
- Treasurer
- Director of Alumnae
- Director of Chapters
- Director of Membership
- Director of Standards



### Regional Officer Qualifications:

A candidate should be an alumna member in good standing of the Fraternity and have served the Fraternity within 10 years prior to election as a member of the Fraternity Council, as a Province Officer, as a chairman of a Fraternity Standing Committee or Special Committee, as a Fraternity Council Assistant or as a Field Representative.

### Regional Officer Positions:

- Regional Director of Alumnae (six positions to be slated)
- Regional Director of Chapters (six positions to be slated)

## Kappa Kappa Gamma Recommendation for Fraternity Position

**Mail to:** BETH SHARP, Penn State, 140 Riverside Dr. Apt 2l, New York, NY 10024 or fax to 212/877-4178.

**Deadline:** January 15, 2004. Additional forms are available online at [www.kappa.org](http://www.kappa.org).

I recommend: \_\_\_\_\_  
First Name Middle/Maiden Last Husband's First Name

\_\_\_\_\_  
Street Address City State/Province Postal Code

Chapter: \_\_\_\_\_ Telephone: \_\_\_\_\_ E-mail: \_\_\_\_\_

I have known this Kappa for \_\_\_\_\_ years.

I have worked/interacted with this Kappa in the following ways: \_\_\_\_\_

\_\_\_\_\_  
\_\_\_\_\_  
\_\_\_\_\_  
\_\_\_\_\_  
\_\_\_\_\_  
\_\_\_\_\_

What skills, talents and experiences will this Kappa bring to a Fraternity Officer position: \_\_\_\_\_

\_\_\_\_\_  
\_\_\_\_\_  
\_\_\_\_\_  
\_\_\_\_\_  
\_\_\_\_\_  
\_\_\_\_\_

Recommended by: \_\_\_\_\_  
First Name Middle/Maiden Last Husband's First Name

\_\_\_\_\_  
Street Address City State/Province Postal Code

Chapter: \_\_\_\_\_ Telephone: \_\_\_\_\_ E-mail: \_\_\_\_\_

Recommended by: ☐ Chapter ☐ Association ☐ Individual ☐ Other



# 2003 – 2004 Fraternity and Foundation Officer/Staff Directory

**EDITOR'S NOTE:** The Key does not list all standing or special committee chairmen, committee members, or alumnae association and chapter Presidents. This information is available from the KKG Web site at [www.kappa.org](http://www.kappa.org) or by contacting Fraternity Headquarters at 866/KKG-1870 or [kkghq@kappa.org](mailto:kkghq@kappa.org). A complete officer directory is mailed to each alumnae association, chapter, advisory board and house board in the fall. Only e-mail addresses are listed in The Key in order to protect the privacy of our volunteers and staff.

## FRATERNITY COUNCIL

**President:** Ann Stafford Truesdell, P<sup>a</sup>,  
[atruedell@compuserve.com](mailto:atruedell@compuserve.com)

**Vice President:** Priscilla (Pris) Murphy Gerde,  
ΓΔ, [pris@hgrlaw.com](mailto:pris@hgrlaw.com)

**Treasurer:** Judy Stewart Ducate, ΔΨ,  
[jducate@earthlink.net](mailto:jducate@earthlink.net)

**Alumnae, Director of:** Carol George Sanders,  
ΕΞ, [jcsanders@earthlink.net](mailto:jcsanders@earthlink.net)

**Chapters, Director of:**  
Denise Rugani, ΕΟ, [drugani@earthlink.net](mailto:drugani@earthlink.net)

**Membership, Director of:**  
Martha Allen Kumler, BN,  
[mkumler@columbus.rr.com](mailto:mkumler@columbus.rr.com)

**Standards, Director of:**  
Jeane Cox-Meuser, Θ, [coxmeuser@aol.com](mailto:coxmeuser@aol.com)

## REGIONAL DIRECTORS OF ALUMNAE

**Region 1:** (A, B and P Provinces)  
Debbie Osborne Holtsclaw, EN,  
[debkkkg@indy.rr.com](mailto:debkkkg@indy.rr.com)

**Region 2:** (Γ, Λ and N Provinces)  
Ann Kelsay Small, ΓΟ, [annsmall2@cox.net](mailto:annsmall2@cox.net)

**Region 3:** (M, Ξ and Θ Provinces)  
Beth Uphoff Black, E, [blbkkkg@bwsys.net](mailto:blbkkkg@bwsys.net)

**Region 4:** (Δ, E and Z Provinces)  
Julie Marine Leshay, ΔΖ, [leshaykkkg@comcast.net](mailto:leshaykkkg@comcast.net)

**Region 5:** (I and H Provinces)  
Debbie Volk Cook, P<sup>a</sup>, [the.cooks@att.net](mailto:the.cooks@att.net)

**Region 6:** (Π and K Provinces)  
Caroline Poole Cameron, ΕΖ,  
[cpcameron@cox-internet.com](mailto:cpcameron@cox-internet.com)

## REGIONAL DIRECTORS OF CHAPTERS

**Region 1:** (A, B and P Provinces)  
Sandra (Sam) Laich Fetcho, E,  
[emsmom8288@aol.com](mailto:emsmom8288@aol.com)

**Region 2:** (Γ, Λ and N Provinces)  
Susie Eynatten Hughes, Θ,  
[mshughes@worldnet.att.net](mailto:mshughes@worldnet.att.net)

**Region 3:** (M, Ξ and Θ Provinces)  
Mary Holland Belvin, ΕΑ, [mhbhelvin@yahoo.com](mailto:mhbhelvin@yahoo.com)

**Region 4:** (Δ, E and Z Provinces)  
Erin Brummett Klein, ΓΑ,  
[e.klein@worldnet.att.net](mailto:e.klein@worldnet.att.net)

**Region 5:** (I and H Provinces)  
Sharon Brooks Weber, BN,  
[sharonweber@direcway.com](mailto:sharonweber@direcway.com)

**Region 6:** (Π and K Provinces)  
Carolyn Byrd Simpson, ΔΨ,  
[jsimp92295@aol.com](mailto:jsimp92295@aol.com)

## PANHELLENIC AFFAIRS

### National Panhellenic Conference Delegate:

Marian Klingbeil Williams, Θ, [wms2821@aol.com](mailto:wms2821@aol.com)

**First Alternate:** Juliana (J.J.) Fraser Wales, BN,  
[jwales@fuse.net](mailto:jwales@fuse.net)

**Second Alternate:** Carol Morrison Sobek, ΕΔ,  
[csobek@san.rr.com](mailto:csobek@san.rr.com)

**Third Alternate:** Gail Simpson Owen, Α<sup>a</sup>,  
[gowen@insightbb.com](mailto:gowen@insightbb.com)

## PROVINCE DIRECTORS OF ALUMNAE

**Alpha:** (NY, England, E. Canada)  
Twila Capstick Turenne, ΒΨ,  
[twilaturenne@yahoo.com](mailto:twilaturenne@yahoo.com)

**Beta:** (PA, DE, NJ) Andrea Kitch, ΔΑ,  
[akitch@aol.com](mailto:akitch@aol.com)

**Gamma:** (OH) Jill Eversole Nolan, BN,  
[nolan.2@osu.edu](mailto:nolan.2@osu.edu)

**Delta:** (MI) Marie (Mimi) Phelan Fuger, ΓΩ,  
[fugerPDA@aol.com](mailto:fugerPDA@aol.com)

**Delta:** (IN) Suzanne (Susie) Tardy Maxwell, Δ,  
[smaxwell@parktutor.org](mailto:smaxwell@parktutor.org)

**Epsilon:** (IL-N, WI, MN)  
Sue Leone Moore, E, [suzkkkg@aol.com](mailto:suzkkkg@aol.com)

**Epsilon:** (IL-S) Colleen Daugherty Runkle, E,  
[jgr1962@insightbb.com](mailto:jgr1962@insightbb.com)

**Zeta:** (IA, NE) Dawn Savetz, ΔΠ,  
[dsavetz@hotmail.com](mailto:dsavetz@hotmail.com)

**Zeta:** (MO, KS) Sally Patton Anderson, ΓΑ,  
[sandeace@aol.com](mailto:sandeace@aol.com)

**Eta:** (CO, NM, UT, WY)  
Susan Anderson Ritchie, ΓΒ, [erisco@comcast.net](mailto:erisco@comcast.net)

**Theta:** (OK, TX-N) Elaine Perett Hanner,  
ΔΠ, [ehanner@hotmail.com](mailto:ehanner@hotmail.com)

**Theta:** (TX-C) Sylvia Faubion Dodson, ΕΑ,  
[sylviadodson@aol.com](mailto:sylviadodson@aol.com)

**Theta:** (TX-S)  
Laurie McCrimmon Vander Ploeg, ΒΞ,  
[lvanderploeg@houston.rr.com](mailto:lvanderploeg@houston.rr.com)

**Iota:** (ND, SD, MT, ID, AB, WA-E)  
Lisa Steele Overstreet, ΒΚ,  
[lisaoverstreet@aol.com](mailto:lisaoverstreet@aol.com)

**Iota:** (W): (WA-W, BC)  
Vikki Haag Day, ΓΤ, [vhdag1014@yahoo.com](mailto:vhdag1014@yahoo.com)

**Kappa:** (CA-C, HI) Logan Krogh, ΓΞ,  
[lekrogh@yahoo.com](mailto:lekrogh@yahoo.com)

**Kappa:** (S): (AZ, CA-S, NV-S)  
Teri VanDorn Hampson, ΔΟ  
[tahampson@aol.com](mailto:tahampson@aol.com)

**Lambda:** (DC, MD, VA and WV)  
Alice Jackson Curtin, ΓΚ, [acurtin947@aol.com](mailto:acurtin947@aol.com)

**Mu:** (FL-N, GA, SC) Julia Pasko Mitchell,  
ΕΦ, [scoobydid@earthlink.net](mailto:scoobydid@earthlink.net)

**Mu:** (S): (FL-S) Lisa Werner Wiggins, ΕΦ,  
[lisamariawiggins@hotmail.com](mailto:lisamariawiggins@hotmail.com)

**Nu:** (NC, KY, TN – except Memphis)  
Sue Boesel Northcraft, BN,  
[suenorthcraft@aol.com](mailto:suenorthcraft@aol.com)

**Xi:** (E): (AL, MS and Memphis, TN)  
Melisse Campbell, ΔΡ, [melissecampbell@mac.com](mailto:melissecampbell@mac.com)

**Xi:** (W): (AR, LA) Cathy Mask Schwartz, ΔΨ,  
[cschwartz@aristotle.net](mailto:cschwartz@aristotle.net)

**Pi:** (N): (OR, NV) Alice Bernard Helt, BN,  
[a.helt@verizon.net](mailto:a.helt@verizon.net)

**Pi:** (S): (CA) Kathryn Brown Kelly, ΔΨ,  
[kathrynkelly@aol.com](mailto:kathrynkelly@aol.com)

**Rho:** (ME, MA, NH, RI, CT, VT)  
Claire St. Martin Collins, ΕΕ,  
[ccollins@princetonproperties.com](mailto:ccollins@princetonproperties.com)

## PROVINCE DIRECTORS OF CHAPTERS

**Alpha:** (E): (BB<sup>Δ</sup>, BT, ΔΔ, ΖΧ)  
Jeannine Hamilton, ΔΔ,  
[jeanninehamilton@hotmail.com](mailto:jeanninehamilton@hotmail.com)

**Alpha:** (W): (Ψ<sup>Δ</sup>, ΒΨ, ΖΡ, ΖΩ)  
Irene (Kelly) Karapetyan, ΖΦ,  
[kellyk@alumni.princeton.edu](mailto:kellyk@alumni.princeton.edu)

**Beta:** (E): (ΖΒ, ΖΙ, ΖΦ)  
Martha (Mel) Lewis Bonder, BN,  
[melbonder@aol.com](mailto:melbonder@aol.com)

**Beta:** (C): (ΔΑ, ΔΦ, ΕΞ)  
Katherine (Tiger) Batlas Bell, BY,  
[tigerbell@hotmail.com](mailto:tigerbell@hotmail.com)

**Beta:** (W): (ΓΕ, ΓΡ, ΔΞ, ΖΛ)  
Shaleen O'Connor Dziubek, ΓΕ,  
[shaefins@hotmail.com](mailto:shaefins@hotmail.com)

**Gamma:** (N): (P<sup>a</sup>, Λ, ΖΚ, ΗΖ)  
Joni Manos Brown, P<sup>a</sup>, [jmbkkkg@aol.com](mailto:jmbkkkg@aol.com)

**Gamma:** (S): (BN, ΒΡ<sup>Δ</sup>, ΓΩ, ΔΛ)  
Andrea Smith Colbert, BN,  
[acolbert@cinci.rr.com](mailto:acolbert@cinci.rr.com)

**Delta:** (N): (Κ, ΒΔ, ΔΓ, ΗΔ)  
Margaret (Gay) Smith Dwyer, ΔΑ,  
[TD425@aol.com](mailto:TD425@aol.com)

**Delta:** (S): (Δ, Ι, Μ, ΓΔ) Shane Henry Hadley, ΔΡ,  
[shanehh\\_2000@yahoo.com](mailto:shanehh_2000@yahoo.com)

**Epsilon:** (N): (H, Y, ΖΕ, Χ) Christina Voss, X,  
[csvoskkkg@yahoo.com](mailto:csvoskkkg@yahoo.com)

**Epsilon:** (S): (Α<sup>a</sup>, Ε, ΒΑ) Christina Windberg,  
ΖΕ, [clwkkkg@yahoo.com](mailto:clwkkkg@yahoo.com)

**Zeta:** (N): (Ο<sup>Δ</sup>, ΒΖ, ΓΘ, ΔΟ)  
Jayme Morris-Hardeman, ΓΑ,  
[jayme0215@yahoo.com](mailto:jayme0215@yahoo.com)

**Zeta:** (S): (Θ, ΓΙ, ΖΖ) Kristi McCune Bradley, ΓΑ,  
[bradsky34@aol.com](mailto:bradsky34@aol.com)

**Zeta:** (W): (Σ, Ω, ΓΑ) Mary Cambell Ford, BY,  
[Kkgmom@aol.com](mailto:Kkgmom@aol.com)

**Eta:** (E): (BM, ΔΖ, ΕΒ)  
Lorii Rabinowitz-Guckenberger, ΓΒ,  
[snaildog@aol.com](mailto:snaildog@aol.com)

**Eta:** (W): (ΓΒ, ΓΟ, ΔΗ)  
Sherri Dabovich McDowell, ΓΒ,  
[dabaldoya@aol.com](mailto:dabaldoya@aol.com)

**Theta:** (N): (ΒΘ, ΔΠ, ΔΣ)  
Karen (Katie) Smith Lambert, ΒΘ,  
[k1898@aol.com](mailto:k1898@aol.com)

**Theta:** (C): (ΔΨ, ΓΦ, ΕΑ, ΖΣ)  
Pam Haworth Barbera, ΔΡ, [pamb@directlink.net](mailto:pamb@directlink.net)

**Theta:** (S): (ΒΞ, ΕΡ, ΕΥ)  
Linda Stovall Guminski, ΕΒ, [gumikkkg@aol.com](mailto:gumikkkg@aol.com)

**Iota:** (E): (ΒΚ, ΒΦ, ΓΤ, ΖΠ)  
Sara Sanders Bruins, ΒΚ,  
[bruins@idahovandals.com](mailto:bruins@idahovandals.com)

**Iota:** (W): (ΒΠ, ΓΗ, ΓΥ, ΕΙ) Dana Clader, ΒΦ,  
[dclader@hotmail.com](mailto:dclader@hotmail.com)



**Kappa (N):** (EE, EY, HB)

Francesca DeMarco, FK, fdemarco@usc.edu

**Kappa (C):** (IE, AT, EI, ZH)

Michelle Earle, EE, michelle.earle@rvl.com

**Kappa (S):** (IZ, EA, ZN, HF)

Jennifer (Samantha) Polese, BM,  
polesesam@yahoo.com

**Lambda (E):** (FK, GX, ZO, HE)

Kelly Fowler Nylund, ZM,  
kellysulane@yahoo.com

**Lambda (W):** (BY, ES, ZM, ZT)

Julie Carley Reilly, EI, pjreills@erols.com

**Mu (N):** (EK, EM, HA)

Becky Sabau Conkin, EA, rsschc@hotmail.com

**Mu (C):** (AY, EE, ZY)

Elizabeth Shelby Bailey, DP, baileyeliz@aol.com

**Mu (S):** (AE, AK, EF, EZ)

Diane Marie Doolan, AK,  
dmdoolan@bellsouth.net

**Nu (E):** (AB, EF, ZY) Shannon Lyons, FI,

shannon.lyons@duke.edu

**Nu (W):** (BX, EA, EN, ZI)

Kristen Desmond LeFevre, Δ,  
KDLefevre@hotmail.com

**Xi (E):** (FI, AP, EH)

Patti Poundstone Badham, FI,  
patpb140@aol.com

**Xi (W):** (BO, FN, AI)

Cheryl Stanfill Greeson, ΔI, cgreeson@cox.net

**Pi (N):** (BQ, FM, EO) Donna Ward Moore, BQ,

moorepepsi@msn.com

**Pi (S):** (FI, BH, ΔQ) Andrea Johnson, EI,

spinnerdawg@earthlink.net

**Rho (N):** (EX, ZA, ΔN) Nora Barrett, Δ,

nebarrett@partners.org

**Rho (S):** (ΔM, ZQ, ZE, HΘ)

Nancy Acheson McGaan, A<sup>Δ</sup>,  
nach5@juno.com

#### FIELD REPRESENTATIVES

##### Chapter Consultants:

**ZY, Georgia Southern:** Anna Boykin, ΔP,  
annasusan@hotmail.com

**IE, Pittsburgh:** Courtney Russell, ZΣ,  
court1@aol.com

**E, Illinois Wesleyan:** Kristin Whitver, A<sup>Δ</sup>,  
ksw\_99@hotmail.com

**Traveling Consultants:** (See Page 5.)

Use Fraternity Headquarters e-mail address:  
kkghq@kappa.org.

#### COORDINATORS OF CHAPTER DEVELOPMENT

**EI, Puget Sound:**

Stacy Underwood Bjarnason, BI,  
stacybjarnason@comcast.net

**Ψ<sup>Δ</sup> and ZB, Cornell and Lafayette:**

Patty Coffee Gesell, ΔA,  
gesellp@glastonburyus.org

**HΘ, Harvard:** Janice Franklin Larson, A,  
jalarson@lawharvard.edu

**ZM, Virginia Tech:**

Kelly Matyas Magyarics, IE,  
kellymkgg@hotmail.com

#### KAPPA KAPPA GAMMA FOUNDATION

**President:** Patsy Bredwick Levang, IT,  
plevang@yahoo.com

**Development Chairman:**

Mary Kendall Mhoon Maginnis, ΔI,  
mkm2222@aol.com

**Financial Assistance Chairman:**

Valerie Nelson Renner, Δ,  
mcrenner@prodigy.net

#### Alumna Circle Key Continuing Education

##### Grants Chairman:

Sarah Nichols Ackerman, ΔF,  
candsackerman@aol.com

##### Chapter Consultant Scholarships Chairman:

Susan Pile, ΔA, pile@uiuc.edu

##### Holiday Sharing Chairman:

Wilma Winberg Johnson, ΔN,  
wilmajohnson@juno.com

##### Rose McGill Confidential Aid Chairman:

Marjorie (Marj) Matson Converse, ΓΔ,  
marjconv@aol.com

##### Rose McGill Confidential Aid to

##### Undergraduates/Rose McGill Undergraduate

##### Emergency Grants Chairman:

Kay McKenzie McCord, ΓZ,  
mamccord@imonline.com

##### Scholarships (Undergraduate/Graduate)

**Chairman:** Elizabeth (Libby) Tucker Gessley,  
ΔZ, lgessley@aol.com

##### Museums Chairman:

Susan Bowman Farr,  
EA, sfarrtcu@aol.com

##### The Heritage Museum Chairman:

Dorothy Ann (D.A.) McGinnis Kreinbuhl, BN,  
dak1216@aol.com

##### The Stewart House Chairman:

Carol Macari Bowman, A<sup>Δ</sup>,  
cbowman@maplecity.com

#### KKΓ FOUNDATION OF CANADA

**President:** E. Joan Williams, BΨ,

jwilliam@pathcom.com

#### KKΓ FRATERNITY HEADQUARTERS

Phone: 614/228-6515, Toll free:

866/KKG-1870, Fax: 614/228-7809,

E-mail: kkghq@kappa.org, Web site:  
www.kappa.org

**Mailing address:** Kappa Kappa Gamma

Fraternity Headquarters, P.O. Box 38,  
Columbus, OH 43216-0038. Shipping address  
(for UPS, FedEx, etc.) 530 E. Town St.,  
Columbus, OH 43215.

**The e-mail for Headquarters Staff is the first  
letter of their first name followed by their  
last name all in lowercase followed by  
@kappakappagamma.org.**

**Executive Director:** Lila Isbell, BΦ

**Executive Director of Foundation:**

J. Dale Brubeck, FK

**Associate Executive Director:**

Lauren Sullivan Paitson, ΔA

**Rose McGill Magazine Agency Supervisor:**

Mary Ellen Thompson Figgins, BN,  
(for orders call 800/KKG-ROSE)

**Director of Finance:** Heather Leasor Root

**Chapter Finance Supervisor:**

Sarah Witkowski Gipe, P<sup>Δ</sup>

**Director of Technology:** Jean Hoy Davis

**Meeting Coordinator:** Julie Jones, ΔΓ

**Director of Communication Services:**

Joelle Debevoise Folan

**Editor of The Key:**

Jenny Struthers Hoover, ZK

**Assistant to the Editor of The Key:**

Allison Greiner, BN

**Director of Education and Training:**

Marla Janzing Williams

**Archivist/Museum Curator:**

Kylie Towers, O<sup>Δ</sup>

Only department or project managers are  
listed above. For a complete Headquarters  
staff directory, visit [www.kappa.org](http://www.kappa.org).

## Leadership Academy Is Coming: Fall 2004!

Since its inception, Kappa Kappa Gamma has been known for its *Tradition of Leadership*. This tradition is our legacy. To carry this tradition into the future, Kappa Kappa Gamma has established the Leadership Academy to develop and nurture emerging leaders. The Leadership Academy is supported through a generous grant from the Kappa Kappa Gamma Foundation.

The first-ever Leadership Academy will be held in the Fall of 2004 at Bradford Woods, an outdoor education retreat center in the middle of 2,500 acres of beautiful wilderness in Indiana. The Leadership Academy is geared toward supporting the growth of individual leadership development. Emerging leaders — one collegian and one adviser from each chapter — will be invited to participate in three days of intensive leadership development in a beautiful outdoor setting. A total of 25 chapters have been invited to attend a Leadership Academy pilot run, which will be held in April 2004.

Programming for the Leadership Academy has been developed in partnership with the Tompeters! Company and Bradford Woods. This fun-filled weekend will include outdoor leadership challenges, personal reflection and group interaction. For more information about Leadership Academy, visit [www.kappa.org](http://www.kappa.org).



Leadership Academy will be held at Bradford Woods in April 2004.

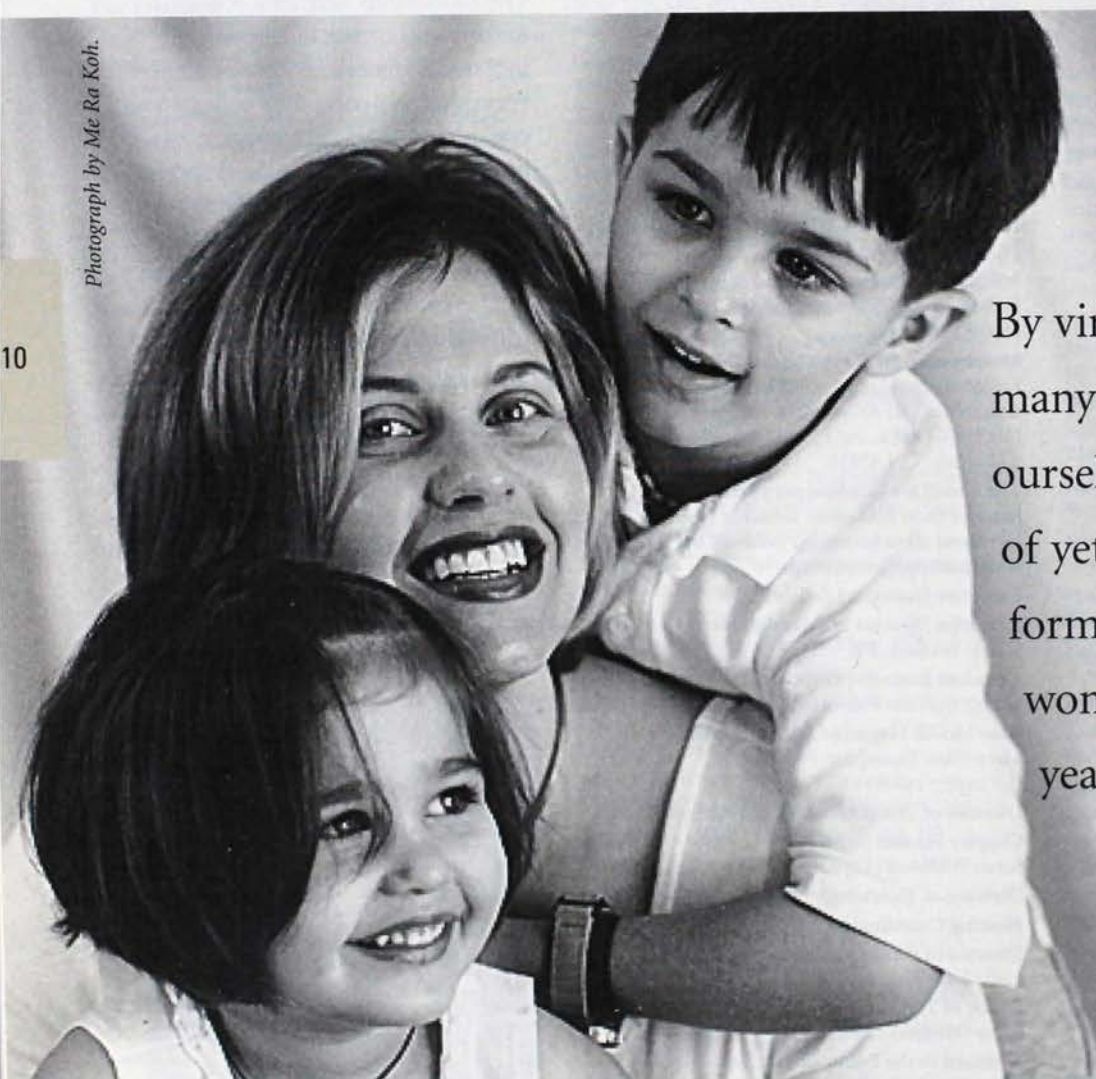


# Mommyville ...

## A Lesson in Leadership

— By CHRISTINE VERGES GACHARNÁ, *Oregon State*

Photograph by Me Ra Koh.



By virtue of being Kappas, many of us have found ourselves joining the ranks of yet another bond-forming membership for women in our post-college years — motherhood.

CHRISTINE VERGES GACHARNÁ, *Oregon State*, is a writer and jewelry designer in addition to being home full time with Jonathan, 4, and Alexis, 3. She is a former President of the TACOMA (WASH.) AREA ALUMNAE ASSOCIATION and current Secretary and Newsletter Editor. Check out her jewelry at [www.CleoBleu.com](http://www.CleoBleu.com).



# Ways to Survive Mommyville

## Work

Find something you love to do and then find a way to make money doing it — from home. TRACY ALLEN MAXWELL, *Washington*, uses her skills as an entrepreneur and former CEO to mentor start-up companies part time from home while she cares for her toddler. “Someday I will build up my career again,” says Tracy, who is enjoying her “important, new role” as a mother.

Or, follow the lead of STEPHANIE BASSETT SILER, *Tennessee*, who left her career after her daughter was born and now runs a home business selling whimsical paintings for nurseries and children’s bedrooms. “The best thing is being my own boss ... If it is a beautiful day, I can drop it all and go to the park with Madeleine,” says Stephanie, who admits that the responsibilities of running a business, including paperwork and Web site maintenance, force her to manage time carefully.

For help in finding work-from-home options, visit [www.jobsformoms.com](http://www.jobsformoms.com) or [www.wahm.com](http://www.wahm.com).



## Work Out


Invest in a YMCA or other community recreation center membership where there are loads of family activities. Or, buy an exercise machine and place it in a part of the home where it invites use while your little ones sleep. MARYN NICHOLSON FELICIANO, *Pepperdine*,

While I don’t remember hearing much about motherhood as an undergraduate, I have since heard it advertised in many ways including “the most difficult, challenging and rewarding career of a lifetime.” The day-to-day job description might sound entry-level mundane, but mothers understand that the real analogy is much closer to that of CEO — overseeing (or impersonating) the nurse, accountant, broker, educator, chef, cleaning crew, decorator, seamstress, handyman, photographer, chauffeur and entrepreneur — around-the-clock. She is integral to the structure of the family hierarchy and naturally assumes her position as a leader within it. A mother’s strength is phenomenal when tested and forms the backbones of successful children.

Albeit an unpaid position, effective mothering yields lucrative benefits. To direct, supervise, correct, encourage, redirect, remind and enforce the process of a 2-year-old putting away toys is the work of a leader. While it would be considerably more efficient to assume responsibility for the task herself, a mother realizes that it is not in the long-term best interest of children for her to clean up their messes from birth until the day they leave home. She reminds herself often that the effort put forth now will build a strong foundation for the teenage years and beyond.

A mother also understands that she cannot be all things to all people. As the leader, she delegates. Children are responsible for age-appropriate chores, assigned and monitored but not completed by Mom; Grandma’s offers to help are never snubbed, even when Grandma has a very different approach to arriving at a common end. A mother does not consider herself a failure by enlisting help — be it mowing the lawn, cleaning the house or caring for a special-needs child. Instead, like the CEO, she considers herself responsible for achieving the best possible results from limited resources.

“Kappahood” embraces us all — no matter where we are in life or what leadership roles we play. Kappas who have not entered motherhood remain daughters. Mothers of small children look forward to swapping a few hours of baby talk for girl talk. Mothers of school-age children and teens face an entirely new set of parenting challenges and joys. Stepmothers with interesting perspectives and women who have been promoted from “Mom” to “Grandma” also have insights to share.

Like motherhood, Kappahood lives within us for the rest of our lives. Looking over a sleeping baby, a mother wonders how life had meaning before her children. Once a Kappa has experienced the amazing bond of true and faithful kinship with another Kappa, she wonders how she would have survived college — and especially life after college — without her Kappa friends. Membership in both of these special bonds of womanhood is a blessing and a lifetime reward. 



does both, taking daughter Emily to the Y for swimming lessons and working out at home on off days while baby Jed naps. Regular exercise is a proven way to reduce stress, increase energy and fight depression. Ask a "mommy-friend" to trade babysitting favors or to be your exercise partner.

## Share the Work

WENDY COMER LAMBERT, *Oregon State*, "shared" her sixth grade classroom at Five Oaks Middle School in Beaverton, Ore. "I would teach Wednesdays and Fridays and every other Monday, and my partner teacher would teach Tuesdays, Thursdays and every other Monday," explains Wendy. "We had to have really good communication for it to work, but it was never a problem. And the kids loved it." Wendy's mother and mother-in-law cared for their grandson on the days Wendy taught school.

## Quit Your Day Job

While mothers often find it necessary to work outside the home, some choose to put their professional careers on hold. "There are so many things that I would miss out on if I worked outside the home," says JULIE HOSSFELD EHRLICH, *Washington State*. "First steps, first words — all of that stuff is priceless. I may not have a huge house or a new car ... but those are just the sacrifices I make to be with my child."

"Stay-at-home mothers don't have to wait until the end of the year for a bonus," says PAULA MCKIE LONGAN, *Nebraska*, the mother of four young children. "Our bonuses come without warning and can be in the form of spontaneous hugs and giggles."

## Dress the Part

A mother's role is closer to CEO than maid. Why, then, do so many mothers of young children fall into the habit of wearing old sweatpants and faded T-shirts day after day? Forget the fine woolens and silks, which must be professionally dry-cleaned. Instead, make every day "casual Friday." If you wore lipstick before you had babies, put some on. Force yourself to look better and the inevitable consequence of feeling better will follow.

## Suite Surrender

Why not temporarily move your toddlers into the master bedroom? In addition to giving them ample space to play and explore in an inherently

childproof setting, it buys a mother precious time to shower and pamper herself in the master bathroom — all within sight, sound and reach of the children.

## Time Out

Saturday mornings, once a month, members of the SEATTLE ALUMNAE ASSOCIATION meet for "Kappacino" at a coffee shop. In addition to monthly association meetings, STACY STANHOPE ZIMMERMAN, *Oregon State*, continues to renew her season tickets to the Seattle Repertory Theater with a girlfriend, a tradition that predates marriage and motherhood. "My husband is extremely supportive of my interests," Stacy says. "He, too, has his own outside interests ... and we both are better people for the things garnered by these interests. We feel strongly that our daughter will be a better person seeing her parents' examples of varied interests and philanthropic work."

## Reach Out

New mothers sometimes feel isolated, especially after giving up careers they've spent years building. Reach out to other mothers who will support and understand what you're going through. Many Kappa alumnae associations offer "Moms and Tots" groups. Visit [www.kappa.org](http://www.kappa.org) to learn about more alumnae association opportunities. Check out local "MOMS Clubs" ([www.momsclub.org](http://www.momsclub.org)) or "MOPS" (Mothers of Preschoolers [www.gospelcom.net/mops](http://www.gospelcom.net/mops)) organizations.

Mothers concerned about keeping up with technology and sharpening business skills while caring for children can put their experience to work as volunteers. Countless organizations depend on skilled volunteers. Even a sliver of time can make a phenomenal difference, and volunteer work is easy to tailor around motherhood duties.

## Mother Knows Best

Even though the birth or adoption of a child can be overwhelming, a mother must learn to trust her judgment and be confident in her parenting abilities. "The number one thing a stay-at-home mom can do is trust her instincts," says Dr. Thomas Connolly, MD, Fellow of the American Academy of Pediatrics and a graduate of Emory University School of Medicine. "It is right 75 percent of the time."

And remember — Even during a bad day, you're still the best Mom your child could have!



# Great Holiday Gifts for Friends and Family

Why wouldn't you buy your magazines from the  
Rose McGill Magazine Agency?

A gift of a magazine continues to bring enjoyment throughout the entire year. And, the money that is generated by our magazine sales makes it possible to help more Kappas through the Rose McGill Fund of the Kappa Kappa Gamma Foundation. Do you know that approximately 50 percent of the price of each subscription Kappa sells comes back to Kappa to be used for the Rose McGill Fund? What better way to share the holiday spirit — a gift of a magazine for family or friends and a gift of financial aid for Kappas? Choose from the list below.\* Then, call 800/KKG-ROSE, e-mail [mfiggins@kappakappagamma.org](mailto:mfiggins@kappakappagamma.org) or call your local magazine chairman to place an order.

## ADVENTURE

Backpacker	\$24.00
Canoe & Kayak	\$20.00
National Geographic Adventure	\$15.00
Men's Journal	\$20.00
Outside	\$17.00

## ANIMALS

Cat Fancy	\$16.00
Dog Fancy	\$16.00
Equus	\$20.00
Horse Illustrated	\$16.00

## BUSINESS AND FINANCE

Barron's	\$145.00
Business Week	\$46.00
Fast Company	\$20.00
Forbes	\$30.00
Fortune	\$30.00
Kiplinger's Personal Finance	\$24.00
Money	\$20.00
Smartmoney	\$18.00
The Wall Street Journal	\$189.00

## CHILDREN (AGE RANGE)

American Girl (8-12)	\$20.00
Appleseeds (6-9)	\$30.00
Ask (7-10)	\$33.00
Babybug (Up to 2)	\$36.00
Boys' Life (8-18)	\$18.00
Boy's Quest (6-14)	\$34.00
Cricket (9-14)	\$33.00
Disney Adventures (6-12)	\$12.00
Girls' Life (9-14)	\$20.00
Ladybug (2-6)	\$36.00
National Geographic Kids (8-14)	\$18.00
Nick Jr. (2-6)	\$20.00
Nickelodeon (7-14)	\$20.00
Ranger Rick (7-12)	\$17.00
Soccer Jr. (8-16)	\$15.00
Spider (6-9)	\$36.00
S I for Kids (7-11)	\$20.00
S I for Kids (12-16)	\$20.00
Wild Animal Baby (1-3)	\$20.00
Your Big Backyard (3-7)	\$15.00

## COMPUTERS

Computer Gaming World	\$20.00
Gamepro	\$20.00
MacHome	\$30.00
Nintendo Power	\$20.00
PC Magazine	\$25.00
PC World	\$20.00

## COOKING

Bon Appetit	\$24.00
Chili Pepper	\$25.00
Cooking Light	\$22.00
Food & Wine	\$32.00
Gourmet	\$20.00
Light & Tasty	\$18.00
Saveur	\$20.00
Taste of Home	\$18.00

## ENTERTAINMENT

Biography	\$15.00
Premiere	\$16.00
Rolling Stone	\$26.00
Soap Opera Digest	\$40.00

## FASHION

Allure	\$15.00
Elle	\$20.00
Glamour	\$18.00
GQ	\$20.00
Harper's Bazaar	\$11.00
InStyle	\$25.00
Vogue	\$20.00

## HEALTH

Health	\$16.00
Men's Health	\$25.00
Prevention	\$17.00
Self	\$15.00

## HOME/GARDENING

Architectural Digest	\$40.00
Better Homes & Gardens	\$17.00
Birds & Blooms	\$18.00
Coastal Living	\$16.00
Country Home	\$22.00
Elle Décor	\$20.00
Family Handyman	\$24.00**
Garden Design	\$24.00
The English Garden	\$30.00
House & Garden	\$20.00
House Beautiful	\$12.00
Martha Stewart Living	\$24.00
Mary Engelbreit's Home Companion	\$20.00
Old House Journal	\$16.00
Real Simple	\$20.00
Southern Accents	\$20.00
Southern Living	\$30.00
Sunset	\$22.00
This Old House	\$20.00

## NEWS

Newsweek	\$32.00
The Economist	\$129.00
Time	\$30.00
U.S. News & World Report	\$26.00

## PARENTING

ADDitude	\$20.00
Child	\$12.00
Parenting	\$10.00
Parents	\$10.00
Working Mother	\$10.00

## POLITICAL/LITERARY/SOCIAL

Atlantic Monthly	\$20.00
Harper's Magazine	\$12.00
The New Yorker	\$50.00
Reader's Digest	\$24.98**
Reader's Digest/Lg. Print	\$29.96
Weekly Standard	\$64.00
Wilson Quarterly	\$20.00
Vanity Fair	\$24.00

## SCIENCE

Audubon	\$20.00
Astronomy	\$30.00
Discover	\$16.00
Invention & Technology	\$15.00
National Geographic	\$34.00
Popular Science	\$15.00
Scientific American	\$25.00

## SPORTS

Boating	\$22.00
Cruising World	\$16.00
ESPN	\$18.00
Field & Stream	\$15.00
Fly Fisherman	\$20.00
Golf	\$16.00
Golf Digest	\$18.00
Sailing World	\$16.00
Salt Water Sportsman	\$25.00
Ski	\$15.00
Skiing	\$15.00
Sports Illustrated	\$40.00
Yachting	\$20.00

## TEENS

Brio (12-15)	\$18.00
Cicada (14 & up)	\$36.00
Cosmo Girl	\$15.00
NY Times Upfront	\$15.00
Seventeen	\$12.00
Teen People	\$16.97**
Teen Vogue	\$10.00
YM	\$15.00

## TRAVEL

Arizona Highways	\$24.00
Conde Nast Traveler	\$15.00
Cruise Travel	\$18.00
Ireland of the Welcomes	\$18.00
Islands	\$20.00
National Geographic Traveler	\$20.00
Travel: Arthur Frommer's Budget Travel	\$12.00
Travel & Leisure	\$30.00

## WOMEN

Family Circle	\$12.00
Good Housekeeping	\$15.00
More	\$20.00**
O, The Oprah Magazine	\$20.00
Redbook	\$15.00**
Town & Country	\$15.00
Weight Watchers	\$14.00
Woman's Day	\$16.00

\* Prices listed are for one-year subscriptions unless otherwise noted.

\*\* Magazine price is for a two-year subscription.

Prices are valid through February 1, 2004.

The complete title list is available by calling 1-800-KKG-ROSE and asking for a catalog.



# The Time of Your Life

## Alumnae Associations Are the Key to Lifetime Membership

— By LOIS CATHERMAN HEENEHAN, Adelphi

*"We who come from widely separated chapters ..." as well as from varied careers, city apartments, suburban homes — we who keep a house and family functioning and volunteering wherever we are needed, like to find a few hours to meet with our sisters.*

*We share food, fun, friendship, philanthropy, fund raising and programs ... but most of all we share each other's lives. We are the alumnae of Kappa Kappa Gamma and we enjoy renewing our ties as we share memories and create new ones.*

*There were 17,632 dues-paying alumnae in 2002-2003. The goal is to reach 18,700 by our General Convention in June 2004, reflecting our founding year, 1870. Will you be counted? Why should you be and how can you make that happen?*

Kappa Kappa Gamma currently has 328 alumnae associations across North America plus one in England. Have you joined your local alumnae association yet? If no association exists in your area, consider starting one!





## Help — I'm a Recent Graduate!

New diploma, new job, new home ... but what about friends? If you know of an alumnae association in your city, join and you'll have a whole group of women who will help you find a new dentist, hairdresser — whatever you need. Their support and friendship will make you feel at home in your new environment and provide networking for future career moves.

## I'm New in Town. Where Are the Kappas?

Looking for other alumnae? Use the "Owl Out on a Limb" coupon in *The Key* to find other Kappas near you. And be sure to keep your address current at Fraternity Headquarters so you continue to receive your magazine ... an address-change coupon is in the back of each issue. The official Web site offers a quick and easy means of contact: [www.kappa.org](http://www.kappa.org).

## What's in It for Me?

Look back to paragraph two — food, fun and friendship are the first things mentioned and are what most of us start out looking for in alumna life. A big-city association or a small suburban or rural group, wherever you go as an alumna, you will find a Kappa — a potential friend.

There are "special benefits" to alumna membership. For one thing, it's not nearly as expensive as chapter dues and recent graduates and 50-year members are often given special rates. While you might want to jump right in and serve on a committee or take a chairmanship, friendship is the major attraction and you will be welcomed just for your presence.



The RARITAN VALLEY ALUMNAE ASSOCIATION was chartered in March 2002.

## The Birth of a Kappa Alumnae Association

RHONDA MCCOY GRUENWALD, *Purdue*, wanted to connect with Kappas after she and her husband relocated from Chicago to Flemington, N.J. Sharing her experience, she wrote:

Kappa alumnae associations had always provided me with a means of networking in the community and an opportunity to meet dynamic women. I contacted the Assistant to the Director of Alumnae, beginning the process of contacting Kappas in a fairly large area. Seventeen Kappas responded but word passed quickly and others showed interest, with 10 attending the organizational meeting. Officers were elected and the RARITAN VALLEY ALUMNAE ASSOCIATION was chartered in March 2002.

We now have 33 paid members ranging from 23 to 73 years of age and from various chapters. We enjoy having a good time together but (also) serve as advisers to ZETA BETA CHAPTER, *Lafayette*. We honored eight 50-year members at our first Founders Day and grossed more than \$1,000 to benefit the Kappa Kappa Gamma Foundation from our first fund-raising event.

When we are together, I find myself thinking of a quote in a previous issue of *The Key* by Fraternity President ANN STAFFORD TRUESDELL, *Ohio Wesleyan*: "A gathering of Kappas is always a happy time. Old friends, new friends, renewed friends ... relationships worth keeping forever." That is what an alumnae association is all about. Commitment is what makes it work, but it is very worthwhile and rewarding. I encourage all Kappa alumnae to join their local association or have the ambition and confidence to start one.



## I'm Too Busy!

But Kappa connections are well worth a little extra effort. MELISSA SOZA FEES, *Arizona State*, recalls attending an association meeting the day the Gulf War began and how good it felt to be with a surrogate family in a time of need. "I met women older than myself who were great peers and mentors to me and am still in contact with several of them." Melissa became a chapter adviser and an alumnae association Membership Chairman.

ANDREA BELOFF, *North Carolina*, recognizes that some recent graduates may feel "burnt out" and need a break of a year or two before becoming involved again. She believes in making a special effort to welcome new members and following-up to make sure they return. "It's amazing how strong the bonds of Kappa are and how immediate the affinity feels," she says, adding, "You suddenly realize that Kappa is so much bigger than the one chapter you came from. For years and years, all over the United States and Canada, Kappas have been singing the same songs, engaging in the same rituals, speaking the same language. You don't see that as an active, but it becomes incredibly clear as an alumna ... and no matter how different the chapters are that we came from, Kappa exists for all of us."

*"You suddenly realize  
that Kappa is so much  
bigger than the one chapter  
you came from."*

with others for a monthly get-together at a central location after work. It may be for dinner or a holiday cookie exchange, but it's always for fun.

Others may prefer a "Lunch Bunch." This can take place during a work lunch hour at a convenient eatery; retired ladies often enjoy finding a new place to try each month.

And there are book clubs, gourmet cooking groups, "Moms and Tots" activities, tennis or other sports groups — whatever your interest, you can find Kappas to share it with you.

ANN KELSAY SMALL, *Wyoming*, gathered a group of six young women in the Las Vegas area, with

interest expressed by a number of others who were unable to attend. The meeting was a bit like chapter recruitment, with conversation revolving around "What do you do? I'm looking for a new job. What doctor/dentist do you go

to? I haven't made any good friends since I moved here." All expressed the need for being with women their own age and all found their ties to Kappa still strong and relevant.

Amazing things happen when small groups get together. They grow. The TWIN CITIES (MINN.) ALUMNAE ASSOCIATION reorganized basically as a "Night Owls" group and within a year went from 30 to 125 members. The NEW YORK CITY ALUMNAE ASSOCIATION President is a "networking queen on e-mail," keeping young members tuned in to each other as well as job and housing opportunities. Retirement areas have Kappa groups that can meet socially and still operate under the Kappa umbrella.

## Can I Start Slowly?

How about being a "Night Owl"? Many associations have groups within the association and Night Owls is often the place where young women begin their alumna journey — gathering

The NEW YORK CITY ALUMNAE ASSOCIATION offers social events and community service activities for alumnae of all ages. To learn more about their success, contact association President LINDA KANG, *UC San Diego* at [linda.kang@morganstanley.com](mailto:linda.kang@morganstanley.com)





## Remind Me. How Do I Reconnect with Kappa?


- Keep your address current at Fraternity Headquarters. Use *The Key* coupon or e-mail [kkghq@kappa.org](mailto:kkghq@kappa.org).
- Use the "Owl Out on a Limb" coupon on Page 44 or e-mail [kappaowls@kappa.org](mailto:kappaowls@kappa.org).
- Log on to [www.kappa.org](http://www.kappa.org).

## And I Should Do this Because ... ?

You'll meet more wonderful women, enjoy their company, broaden horizons and friendships, strengthen the ties that bind and have good food and great fun.

As an active alumna, you also will be doing your part to strengthen the Fraternity for years to come by paying your annual alumna dues. If you pay dues to a local alumnae association, your alumna dues are included in that payment and will be sent to Fraternity Headquarters for you. If you do not belong to or live near an association, remember to send your \$10 directly to Fraternity Headquarters. (Call toll free 866/KKG-1870 to pay by credit card or send your check with the form on Page 4.)

If an alumnae association does not exist in your area and you know of Kappas who might be interested in starting one, contact SHIRLEY SWAN JORDEN, *Tulsa*, Assistant to the Director of Alumnae, at P.O. Box 8111, Horseshoe Bay, TX 78657, phone: 830/596-2201 or e-mail: [ssjorden@tstar.net](mailto:ssjorden@tstar.net) to find out what steps to take.

Kappa is for a lifetime. Make it part of your lifetime and have the time of your life! 



## Coming Back to Kappa

I was initiated in 1980 along with 30 other wide-eyed young women at Centre College ... the charter class of ZETA GAMMA CHAPTER. I had unrealistic expectations of what sisterhood meant. The first tangible evidence of our chapter came with our first chapter portrait. It hung over the mantel and faces were faces. I was too callow and caught up in activities at that point to understand the significance of what those faces meant.

Two years passed and aspects of my life changed. A perceived hurt mushroomed and ended with an acrid letter and all my Kappa gear was packed into a cardboard box. Going my own way was paramount. I resigned.

Many years passed and about five years ago I began receiving Christmas cards from Zeta Gamma Chapter. Didn't they know that I was no longer part of Kappa? Looking back, the groundwork was being laid.

October 2001 was Centre's Homecoming and the Panhellenic's 20th anniversary. Bizarre did not even come close to explaining the feelings of not only going back to Kentucky after all those years, but also of dealing head-on with Kappa Kappa Gamma.

At last all sororities had chapter houses and stepping into the Kappa house felt strange. There was that original portrait above the mantel ... the faces of girls who were now grown women. Unlike 20 years earlier, each face had a memory associated with it. I found my own face and had to turn away; it was too painful. Something was terribly wrong.

Flying back to New Jersey, that portrait gnawed at me. The epiphany struck. Metaphorically, we were pioneers. We were part not only of Centre's history but of Kappa Kappa Gamma's history. The pain I felt at the house was that I wanted to be part of that legacy again. I didn't think it would be possible, but I truly wanted my badge back!

A flurry of e-mails and phone calls went to PRIS MURPHY GERDE, *Purdue*, then Director of Standards, and JANE KETCHAM STEINER, *Miami (Ohio)*, in the Membership Services Department at Fraternity Headquarters. Yes, my badge was attainable but would take work. Three Kappas would need to write a letter of recommendation on my behalf. Would there be three who would remember me and write on my behalf? My resignation and another member's had hurt the next year's pledge class. I had to ask for help and forgiveness.

Athena must have been smiling. Three sisters happily agreed to write letters and even expressed to me their feelings of doubt years before. I will always be grateful to them.

I received my reinstatement letter but, sadly, my original badge could not be found. I ordered the one I had wanted 20 years ago but could not afford — the sapphire and pearl. It arrived on February 4, 2003, two days before my birthday. Reading the inscription on the back, I became misty-eyed.

The portrait over the mantel no longer pains me. I'm back where I should have been all along. Kappa never left me; it was there to embrace me back. My beautiful new badge symbolizes that bond.

— By WENDY REED, *Centre*



# A School Shooting Leaves Unanswered



**S**chool shootings are happening across the continent and around the world — in big cities and small towns, in inner cities and suburbia. Students armed with guns and bullets physically and psychologically are injuring classmates, staff and community members. At the time this article was written, nearly 30 elementary schools, middle schools and high schools around the world have experienced the madness of school shootings since 1996.



# Questions

— By **SADIE WILSON MOONEY**, *Oregon State*

Unless it has happened in your community, you truly cannot understand the devastating effects of a school shooting. Even though I didn't witness the gruesome acts of violence committed at my high school, they have changed me forever.

Sitting in the front row of my high school graduation ceremony wearing my honor society attire, I felt numb instead of excited. An enormous weight rested on my shoulders. My family and friends were sharing in the strange mixture of emotions. Friends crossed the stage one by one accepting their diplomas while trying to accept the harsh reality they had experienced only a few weeks earlier. The same question floated through each of our minds — Why? Why did this happen?

## **May 21, 1998:**

Kipland Kinkel, a 15-year old freshman student, returned to Thurston High School in Springfield, Ore., Thursday morning after being suspended pending expulsion the previous day for carrying a gun on campus. Just minutes before 8 a.m., Kip drove onto campus in his parents' Ford Explorer. He parked behind the school entering through the north parking lot. Walking toward the breezeway, his .22-caliber semiautomatic rifle, .22-caliber handgun, and Glock semiautomatic handgun, were concealed by a long trench coat, undetected by school security cameras. Kip walked past the weight room, taking a right toward the cafeteria.

In the breezeway outside the cafeteria, he fired a deadly bullet into the head of Ben Walker, and then shot Ryan Atteberry in the cheek. Kip entered the cafeteria, firing bullet after bullet into fellow students who were socializing before classes. His targets were students and the bullets had no discrimination. He shot over and over again.

Students of all grades and social circles were shot in the arms, legs, chests, shoulders, stomachs and heads. He murdered Mikael Nickolauson, firing a bullet into the back of his head. Pointing the gun into the face of another student, he pulled the trigger discovering his 50-round chamber was empty. As he reached for a handgun, an injured Jake Ryker charged Kip, knocking him to the ground as Kip fired a bullet into Jake's hand. Other boys helped Jake wrestle, disarm and beat Kip to the ground, holding him until police arrived.

I only know these details from news reports and the personal accounts from my brother and my friends. I was not in the cafeteria. I had not even arrived at school yet. I did not know the killer. I did not know the students killed. My story is not about what happened in the Thurston cafeteria on May 21, 1998. My story is about what happened after the shooting in the Thurston cafeteria on May 21, 1998.

As the student body President of Thurston High School, I realized I needed to be, more than ever, a true leader for my peers and my school. I went into autopilot, feeling as if I were standing in a corner, watching myself as I hugged people, talked to students and spoke to the media. I was watching a brave, strong girl who looked like me.

This girl was doing things I never would have dreamed of being able to do. I watched her speak into microphones thrust into her face by reporters. I watched her wipe tears from her eyes as she spoke to hundreds of people at a candlelight vigil. I watched her console people as they were being told their friends were in critical condition and might not make it through the night. I watched her shake President Clinton's hand. I watched her become a strong woman. I couldn't believe she was me ... because inside I just wanted to hide in a dark room and cry.





Weeks passed. We graduated. Summer came and went. I left for college. During the first three years following the shooting, I beat myself mentally trying to figure out why I was so upset, so scared. I did not see the shooting. Yet I jumped at the sound of popping balloons. I felt nervous in crowded areas. I hated certain smells. What was my problem?

How would I pick up the pieces of a shattered innocence and try to reshape them into something that slightly resembled what I once knew, once trusted? It took me four years to discover the answer to this question.

During my senior year of college as I began writing my honors thesis, I allowed myself to break through the walls I had been trying so hard to build. I began exploring my thoughts and memories. I remember sitting in my room, my fingers flying on the keyboard, my face hot and moist, my eyes blurry with tears. I searched my soul. I read research about trauma and reactions to trauma. I spoke with a professional. I talked constantly with my wonderful professor and mentor, Dr. Judith Bowker.

I began to understand. My reactions to the shooting and the events following the shooting were normal. Trauma reactions include, but are not limited to, fear and anxiety, re-experiencing the event and mistrust of others and the world. Trauma causes common everyday sights to become haunting reminders of vulnerability. For example, the cement floor of the breezeway where Kip shot two students had been painted white to cover the bloodstains. Students had traced their hands in black on the white paint, writing messages to one of the students who died. To this day, the outline of a hand sends eerie chills up my spine.


Before I could heal, I had to admit to myself, first softly in my head, then out loud to my family and close friends, and later to groups of people, the thought I had felt guilty

about for four years, the thought I had tried to push out of my mind ... Even though I had not been in the cafeteria on the morning of May 21, 1998, I had been victimized by school violence. My wounds were mental and spiritual, not immediately visible to the human eye. I am a victim of school violence. I AM A VICTIM. Absorbing this thought, allowing it to penetrate my mind and engulf my thoughts, I realized I could heal. I could move on. I could never forget, but I could move on. And I could live.

I discovered a new meaning to strength. For a long time I thought I was strong when I was not crying and not visibly upset. I thought strong was being able to put others' needs before my own. Strong is not only these things, but also many other things. Strong is being able to cry. Strong is admitting to myself that I need help. Strong is getting the help I need so I can begin to mentally and spiritually heal. Strong is being emotional and upset. Strong is learning from the most tragic event and emerging from the trauma better for it. I am strong.

Writing and analyzing my reflections helped me realize I will never be the same person I was on May 21, 1998, at 7:55 a.m. For a period of time I wanted to be the same person I was before the shootings, returning to a euphoric innocence. People used to say to me, and sometimes they still do, "Sadie, you are so lucky you were not in the cafeteria." I may be fortunate that I did not see the shootings, but I live with the effects of this tragedy.

I finished my college thesis a few weeks before graduation. As I sat in the front honors row reflecting on the past four years, I felt an enormous weight begin to lift off my shoulders. I thought about how much my life had changed and will continue to change. I had a beautiful engagement ring on my left hand. My wonderful family was sitting in the crowd sharing in my accomplishments and excitement. My Kappa sisters, women I had grown to love like real sisters, were mixed among the graduates, walking past me one by one. I asked myself the question I had asked so often during the past four years. Why? Why did it happen to my school?

There is no answer. Only a simple statement — school violence can happen anywhere. That's what I want people to understand. School violence doesn't just happen to that school or that city or that state. It happens to everyone, whether they witness the tragedy or not. And we're all in this together. 

*An honors student, Sadie graduated from Oregon State University in June 2002 with a bachelor's of science in speech communication. This article is a compilation of excerpts from and reflections on her college thesis, "Four Years Later: A Personal Reflection on the Thurston High School Shooting." Sadie works for the Pleasant Hill School District in Oregon. She and her husband, Shane, were married in August 2003. Her e-mail address is peech24@aol.com*



# Prevent Violence Where You Live

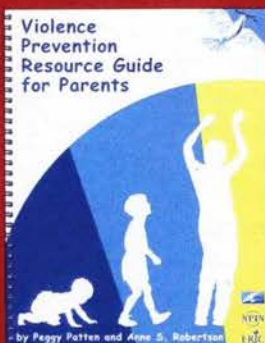
In response to the increase in violence among children, ANNE SCOTT ROBERTSON, *Illinois*, and Peggy Patten have created the *Violence Prevention Resource Guide for Parents* in conjunction with the National Parent Information Network, the U.S. Department of Education's Educational Resources Information Center and the Illinois Prevention Authority.

*The Violence Prevention Resource Guide for Parents* offers three main strategies. First, we can foster a nonviolent popular culture that does not portray violence as an acceptable way to resolve conflicts. Second, we should provide more help for those children who are considered at risk to commit violence than they currently receive from educators, health care providers and law enforcement professionals. Third, we must offer children moral discipline at home and in our communities.

Anne Scott Robertson coordinates the multiple services offered through the National Parent Information Network (NPIN). Over the past two decades, Anne has worked as a teacher, family literacy home visitor, parent educator and researcher. With a bachelor's in psychology and a master's in international educational development, Anne also has served as chairman of the National Parenting Education Network (NPEN). She has written many articles and publications and has spoken on numerous TV and radio shows.

A longtime adviser for BETA LAMBDA, *Illinois*, Anne served as Scholarship Chairman and Panhellenic Vice President during college. A member of Mortar Board and Omicron Delta Kappa honor societies, Anne says, "I would not have had those leadership opportunities if it hadn't been for Kappa."

Anne and her family have moved often and she says it always felt good to know there was a network of Kappas nearby. Anne and her husband have four children and two foster children and reside in rural Illinois. Her e-mail address is arobrtsn@uiuc.edu.



*Violence Prevention Resource Guide for Parents* is available through the ERIC Clearinghouse on Elementary and Early Childhood Education/NPIN Children's Research Lab at 800/583-4135, via e-mail at npin@uiuc.edu or visit <http://npin.org>.

Psychologist and family advocate  
**ANNE SCOTT ROBERTSON, Illinois**, co-authored *Violence Prevention Resource Guide for Parents*.



## Are You Prepared?

### A Checklist for Parents

1. Make sure your school has a crisis plan.
2. Make sure the classroom teacher knows what he/she is supposed to do *specifically*.
3. Is there a phone or intercom connecting students with the main office?
4. Is there a committee that tests and analyzes your school crisis plan?
5. Make sure that community members are involved in the plan. Schools may need help in a crisis or shutdown situation with anything from food and water to counseling and other logistics.
6. Does the administration have an alternate "command center" other than the main office?
7. Do parents have copies of the plan so they will know what to do and how to pick up their children?
8. Explain to your older child exactly what you want them to do in a crisis situation.
9. Write your child's name on the inside of clothing and supplies/backpack. (Not on the outside where a stranger could call them by name.)
10. Have your child carry water in his lunchbox, backpack, etc.

Many Web sites offer more information and here are just a few:

[www.kidshealth.org/parent/positive/family/school\\_violence.html](http://www.kidshealth.org/parent/positive/family/school_violence.html)

[www.nasponline.org/NEAT/neat\\_reference.html](http://www.nasponline.org/NEAT/neat_reference.html)

<http://find-safety-consultants.com>

[www.nsscl.org/](http://www.nsscl.org/)

[www.schoolsecurity.org/](http://www.schoolsecurity.org/)

[www.nsc.org/mem/youth/8\\_school.htm](http://www.nsc.org/mem/youth/8_school.htm)

[www.house.gov/kline/childrentrr2.htm](http://www.house.gov/kline/childrentrr2.htm)

[www.colorado.edu/cspv/publications/factsheets/safeschools/FS-SC02.html](http://www.colorado.edu/cspv/publications/factsheets/safeschools/FS-SC02.html)

[www.colorado.edu/cspv](http://www.colorado.edu/cspv)

— Checklist for parents provided by Profiles Editor JULIE KROON ALVARADO, Arizona State, a member of a crisis response team in Phoenix, Ariz.



## Fulbright Scholar Bridges Cultures in Syria

— By ANN GRAHAM SCHNAEDTER, *Missouri*

Though her stay in Damascus was shortened by the recent war in Iraq, ALEXA POLETTI, *William and Mary*, feels her time there as a Fulbright Scholar helped to bridge cultures and dispel misconceptions on both sides.

She recalls the surprise she encountered at a Kappa brunch for graduating seniors when alumnae learned of her plans to study in Syria, many feeling the Middle East a dangerous place. To Alexa, who had studied Arabic, it made perfect sense. "Syria," she says, "is one of the most historically rich countries in the world, and its spoken Arabic is known as one of the purist versions." She also wanted to learn for herself the truth about a people who were often depicted as violent and radical.

The moment she stepped off the plane, her first myth was dispelled. Expecting to have to dress conservatively and be covered up, she noticed women in the latest Paris fashions and makeup. Some were in conservative suits, some in tight pants and high heels, mixing comfortably with those wearing the traditional burka (black cloak) or hijab (scarf.)

Alexa's first days in Damascus were spent learning her way around with the help of her Fulbright advisers and honing her language skills. Though she had studied Arabic in college, she explains that there is written Arabic and spoken Arabic. Every country, and every region within a country, has its own way of speaking which stems from the written. Although she knew written Arabic, she needed to learn Syrian colloquialisms.

The city of Damascus, old with winding streets, bustles with hundreds of taxis and is lined with

houses and numerous tiny shops selling everything from flowers to falafel. "Unfortunately," she says, "large Western fashion shops are making inroads into the colorful ancient city."

For a while she lived in the Christian quarter, known as Bab Touma, in the old section of Damascus. About 10 percent of Syrians are Christian, but just because it is called the Christian Quarter doesn't mean that only Christians live there, or that they don't live elsewhere. And there are different Christian sects, too. On the same street she found an Armenian church, a Syrian Catholic church, a Syrian Orthodox church and a Roman Catholic church. Right around the corner from her home was the "Street Called Straight," the supposed street where the Apostle Paul (then called Saul) converted to Christianity and began his discipleship.

Alexa's schooling began with classes at a nearby institute but soon changed to working with a private tutor 12 hours a week. In addition, she met with a woman from the university six hours a week to practice conversation. As soon as her colloquial Syrian usage improved, she began doing research and teaching English to Palestinian refugees. She was impacted by the stories of her students' tragic experiences fleeing persecution and losing loved ones.

Alexa found the Syrian people to be kind, loving and dignified, inviting strangers into their lives, eager to learn about them. Rich or poor, she says that they offer all they have, even if they have hardly anything. She felt safe on the streets and the shopkeepers knew her by name. Mothers of her Syrian friends made sure she had homemade soup when she was ill. She didn't feel threatened

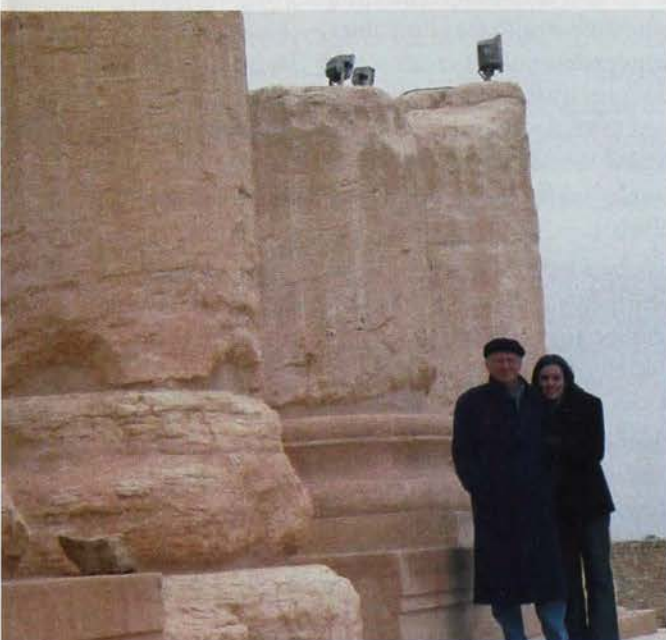




ALEXA POLETTA, *William and Mary*, tours Aleppo north of Damascus as she hones her Arabic language skills while in Syria as a Fulbright scholar.



Alexa (front, second from left) with the Palestinian students to whom she taught English conversation while in Damascus.



Alexa and her father tour Roman ruins in Palmyra (called Tadmor), which are mentioned in records dating from the 19th century BC.


by living in a country next door to Iraq while a war was brewing, she says, because the Syrians didn't believe there would be a war. Any peace marches were small and orderly, with parents and children walking hand-in-hand, students singing or holding banners; there were no weapons or angry shouts as seen in neighboring Arab countries.

During the winter holidays, Alexa's parents arrived for a two-week visit. Together they toured some of Syria's historic sites, such as the Roman ruins in Bosra, south of Damascus. She says, "The Roman amphitheater there is the best preserved in existence." Bosra is mentioned in Egyptian records as early as 1300 BC. Less fortunate people in Bosra have made homes from the ruins of the old Roman stones, prompting Alexa to ponder, "Do they know they are living on one of the most important archeological sites? Or are we, the tourists, oblivious to their poverty as we take pictures of history with our expensive cameras?"

Alexa and her parents also visited Palmyra (called Tadmor), historical ruins mentioned in records dating from the 19th century BC. They toured crusader castles dating to the 12th century and mosques that were once churches that were once temples. "Like peeling an onion," said her mother, "so many layers of history piled on top of each other."

When Alexa and her parents encountered few tourists on their excursions, they realized that the events of September 11 had severely impacted the country. Before September 11, tourism made up 30 percent of the economy. Afterward it plunged to 5 percent. She feels it will rebound, since it is an art historian's and archeologist's dream.

Alexa's studies and her dream to learn more about Syria ended abruptly as the United States embarked on Operation Iraqi Freedom with the invasion of Iraq. Fulbright scholars had to return home or forfeit their scholarships. She hopes to be able to return and continue learning Arabic, and also French, and planning someday to work with the Foreign Service or the United Nations. She says, "If I learned anything from being a Kappa, it was to reach for your dreams and have confidence in all that you do."

Her college days serving as Panhellenic delegate and chapter President taught her to be a leader. In Syria, she realized that it was the job of students like her to create and maintain strong relationships with Syrians in order to pave the way for stronger Arab-American relations, believing that personal experiences like hers matter most in dispelling misunderstandings and mistrust. She loved Damascus and its people and they seemed to love her. She remembers people telling her, "We love Americans. We will keep you safe. It is your government we disagree with, not you. Welcome to our country. Welcome." 



## Company President Reflects on Life and Success

— By **TINA BRAYER TRACY**, *Bowling Green*

**F**rom Clarksburg, W.Va., to the Big Apple — the career path of **PAM MAPHIS LARRICK**, *West Virginia*, has been a combination of hard work, dedication and luck. The President and Chief Operations Officer of McCann Relationship Marketing (MRM) Worldwide, says, “I never in a million years envisioned my career going like this. I think I’ve been very fortunate in my career to be in places where I really liked the people I worked for and with, and I liked what I was doing. It just kind of happened. I don’t think I ever set out to say that I wanted to be president of a company.”

Pam oversees MRM Worldwide’s 64 offices in 37 countries, handling strategic consulting, relationship communications, database management, digital solutions, customer care and custom publishing/branded content. MRM Worldwide’s clients include Coca-Cola, General Motors, Johnson & Johnson and other big corporate names.

Pam joined MRM in November of 1994, as the managing director of the New York office. “When I was a senior in college and looking to go to New York, a lot of friends and family thought my parents were nuts for letting their daughter go to New York, but my parents were very supportive of me,” says Pam, whose mother told her that she could make a difference by getting involved and being willing to experience new things.

Pam’s father advised her to “put herself in the other person’s shoes.” This simple, yet powerful perspective has been a big help to Pam over the years in business and in life.




**PAM MAPHIS LARRICK**, *West Virginia*, is president and chief operations officer of McCann Relationship Marketing (MRM) Worldwide.

Pam also credits her college experiences with helping her succeed in the business world. Being in the Greek system during the Vietnam War was a statement in itself. The Kappa house was a safe haven of trusted, caring friends ... “friends with whom you could stay up all night debating and questioning what life and love were about ... Friends with whom you shared your fears and dreams. I feel very blessed for those lasting relationships that have only grown stronger over the years.”

According to Pam, the reality of today’s business world is really all about relationships. Products no longer create wealth for companies — a company’s customer relationships create wealth. These relationships are built on trust and credibility — two things Pam learned to value as a member of Kappa Kappa Gamma. “At MRM Worldwide we are constantly looking for ideas that make a difference. And that’s what life is all about,” says Pam.

Striking a balance in life between family and work commitments is never easy; however, the events of September 11 reinforced Pam’s need and desire to be connected with friends and family. “This thing we call work can’t get in the way of this thing we call life.”

Whether enjoying art museums with her sisters, boating with her husband, Jon, or planning MRM Worldwide’s next marketing strategy, this remarkable Kappa seems to have found that balance. Her enthusiasm and winning attitude make Pam a leader and role model who says, “Some experiences have worked out better than others, but it doesn’t matter. The journey is what is exciting.” 



# KAPPAS GO AROUND THE WORLD

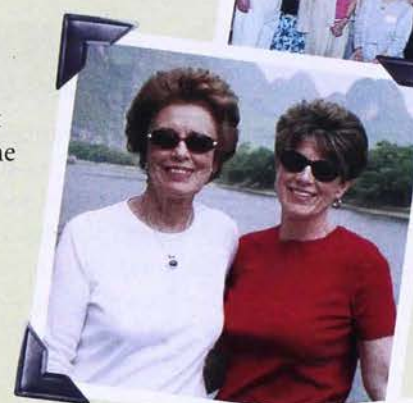
## jPRE-HOLIDAY NEW YORK THEATER EXTRAVAGANZA DECEMBER 4 – 9, 2003

Book quickly for our 5th New York Theater Tour! Tour price is \$2,199 per person dbl. occ., which includes five nights deluxe accommodations at The Essex House Hotel overlooking Central Park, tickets to two of Broadway's latest hits, plus Radio City's Rockettes spectacular. Elegant dinner at Le Cirque restaurant, motor coach to all included events, the services of our famous tour manager, New York City guide book to shopping and dining, and all gratuities and taxes are included. Use FF miles or senior discount tickets for your airfare. Call Nancy Grow at 800/654-4934 for reservations and information. Family and friends are most welcome on this special pre-holiday trip.



## Panama Canal Cruise February 22 – March 3, 2004

Join your Kappa friends aboard the luxurious *MS Rotterdam*, which includes special fares at an exceptional value. Space is limited. Book early to secure best cabins. Sail round-trip from Ft. Lauderdale. Visit Bahamas, Curacao, Aruba, the Panama Canal, Puerto Limon, Costa Rica. \$1,625 p.p. dbl. occ. Discounted air fares available. Call Nancy Grow today for information and reservations at 800/654-4934.



## Galapagos Islands, April 11 – 17, 2004

See the extraordinary wildlife and ecological wonders on this seven-day all-inclusive tour. Just \$2,650 p.p. land only...Machu Picchu extension available. Call Linda Singleton for further details: 800/522-8140.

## KAPPA GOLFARI! April 1 – 4, 2004

Enjoy a weekend of golf instruction and play with the First Lady of Golf and KKT Alumnae Achievement Award recipient, PEGGY KIRK BELL, *Rollins*, owner of the Pine Needles Lodge & Golf Club in Southern Pines, N.C. The "Safari of Golf" is for golfers of all levels who are interested in improving their game while having fun. Participation limited to 50 members of Kappa Kappa Gamma. To reserve your space call 800/747-7272. \$995 p.p. dbl. (\$1,235 single) includes room, meals, golf instruction and play, plus special receptions and dinners. Don't miss this wonderful opportunity to improve your game and have fun with Kappas from across the continent.



## Charleston's Festival of Houses and Gardens April 8 – 13, 2004

October is the deadline for anyone interested in this lovely spring tour. Please call Linda Singleton at 800/522-8140 today. This would be a great custom trip for a mini reunion of family/friends/pledge classes, etc. Land price approx. \$1,149 p.p. Call for details.



## Alaska Cruise/Coral Princess June 20 – July 3, 2004

This "cruisetour" combines the extensive land tour with the seven-day cruise. It's your chance to see all the wonders of Alaska's dramatic coastline and its vast interior. Cruisetour price \$2,595. Option: seven-day cruise June 26-July 3, just \$1,195. Call 800/654-4934. Amazingly low 3rd and 4th passenger cruise fares available...take the entire family!

For more information, contact Kappa Travels Coordinator  
VERA LEWIS MARINE, *Colorado College*, at [kkgtrav@aol.com](mailto:kkgtrav@aol.com) or call  
626/446-3870 or toll free

**866/KKG-1870.**

# KAPPA KTRAVELS





## The Kappa Who Joined the Circus

— By JANET PAVASKO HEYL, *Bowling Green*

After college, JULIE GREENBERG JENKINS, *Illinois*, ran away and joined the circus.

Co-founder of The Midnight Circus, Julie has chosen a career path that most of her college peers could never imagine. Some might find the combination startling or shocking — but when patrons plunk down hard-earned money for a show, Julie believes they should be shocked and entertained. A Chicago-based theatrical troupe, The Midnight Circus combines drama with circus performances for spectators of all ages.

“Katherine Hepburn once said that acting is easy ... Shirley Temple has been doing it since she was 4,” explains Julie. “I feel you had better do some things they [the audience] can’t do themselves — something physically challenging.”

The troupe treats patrons to original works of song, dance, word and, of course, circus acts. Throughout the performances, Julie, a theater major, not only acts but also does handstands, forms group pyramids and flies through the air suspended by knotted silks. The shows tend to defy conventional expectations. “In The Midnight Circus, a play is being performed onstage and the circus comes in through the back door and takes over the stage,” Julie explains. In the show called “All the World’s a Stage,” a circus is on stage and when a magic trick goes awry, the ringmaster turns into William Shakespeare.

It’s not your typical theater, but, then again, Julie isn’t a typical former accounting major. She spent a summer in London studying Shakespeare, performed publicly for the first time in the Idaho Shakespeare Festival and has done a number of voiceovers for TV commercials.

Her acting world collided with the circus community when Julie met Jeff Jenkins, a circus

clown and former faculty member of the Ringling Clown College. The two developed an eccentric acrobatic act for Circus Smirkus — a one-ring, European-style circus that tours New England each summer. While on tour, they honed their circus skills by training with two former stars of the Moscow Circus and first conceived the idea to combine sawdust and scenery.

The duo returned to Chicago and spent two years pitching their idea to various theater companies. “They thought we were nuts!” says Julie. But the actress and clown simply wanted to perform together.

“In European countries, like Russia and France, the circus is respected,” Julie explains. “In America, the circus is often thought of as a sideshow.” And Julie insists, “Good circus can be good theater.” So in 1995, she and husband Jeff wrote the script for The Midnight Circus, which also dubbed as the name for the troupe.

In 1997, “The Midnight Circus: When Circus and Theater Collide” opened at the National Pastime Theater. After playing to sold-out houses, the show began a lengthy tour in theaters throughout the Chicago area.

Despite the critical and commercial success of The Midnight Circus, it remains a small, Chicago-based operation. “It’s still run by my husband and me. We’re agents and performers ... we do laundry sometimes,” she says laughing. “Sometimes, we wear too many hats.”

And one hat is that of a teacher. “Every summer, we take time off and work with kids who audition to be in Circus Smirkus. We practice for three weeks and then tour New England for seven weeks,” says Julie.



JULIE GREENBERG JENKINS, Illinois, is a co-founder of  
The Midnight Circus based in Chicago.

In addition to touring New England, Julie and Jeff have planned a trip to Israel to work with youths from the Jerusalem Circus. "In the Jerusalem Circus, Palestinian and Jewish children study circus arts together," she says. "They live in danger all the time and the circus can still teach kids a positive message." She explains that while the two sides may be at war, it is not uncommon to find a Palestinian child supporting a Jewish child on his shoulders during an acrobatic performance. "We don't often get an opportunity to make a difference and I believe it is important to take a step away and work with children," explains Julie.

For the past five years, The Midnight Circus troupe has been entertaining and educating children and parents in downtown Chicago during its annual Halloween performances. "The city of Chicago hires us to perform at Daley Plaza for the Halloween season because it's Mayor Daley's favorite holiday and he wanted a circus in downtown Chicago," Julie adds. The troupe develops a one-half-hour show based on a theme selected by the city.

This year's theme is the 100th Anniversary of Flight — a tribute to flying. "Amelia Earhart and the Wright Brothers will make an appearance and, of course, I'll be flying," says Julie. The troupe performs six times each day with live bands providing music for the evening performances. "It's great because after the shows we talk and meet the people."

Julie believes the modern circus emphasizes entertainment more than life-risking stunts. "We are more into showing how beautiful the human body is and what it can do. There is risk in everything we do," Julie emphasizes. "But because we practice so much, the audience is able to relax and we become amusing and funny."

When asked if her Beta Lambda sisters would be shocked to learn of her unusual career path, Julie replies, "Because of my theater background, I had a main role in entertaining during rush (recruitment), so some of my sisters wouldn't be surprised. But, the physical aspects of The Midnight Circus certainly would surprise them!"



**EDITOR'S NOTE:** You can see The Midnight Circus during its annual Halloween show at Chicago's Daley Plaza October 10-31, 2003. For more information, visit [www.midnightcircus.net](http://www.midnightcircus.net) or call 773/583-2222.





**GAMMA Xi, UCLA**, members serve food to hundreds of guests at their annual "Kappa Feast" philanthropy, which has helped raise \$5,000 for the Santa Monica Rape Treatment Center.



At the Miss Hispanic Arizona Pageant, members of **EPSILON DELTA, Arizona State**, supported their friends and sisters. The pageant is a major supporter of Hispanic culture in Arizona.



Members of **EPSILON KAPPA, South Carolina**, mingle with potential new members at a bowling party during spring recruitment. Members look forward to fall recruitment in their new chapter house.



During a missions trip to Harmons, Jamaica, **KRISTY SIKORA, ALLISON WINKLER** and **LAURA LEHRMAN**, all *Allegheny*, assist in building a house and collecting 250 pounds of donated goods for the community.

**GAMMA KAPPA, William and Mary**, senior members enjoy the annual senior brunch at the university president's home hosted by the president's wife **ANNE KLARE SULLIVAN, William and Mary**.







Mu Province Meeting was a great place for members of **EPSILON ZETA, Florida State**, to meet Kappas from around the province. The chapter also took home a Gracious Living Award for housed chapters.



**Psi<sup>4</sup>, Cornell**, accepts three awards at the university's Greek awards ceremony. **DANA MARHON, Cornell**, (left) won the Chapter Leader Award, **DEVON PENDLETON, Cornell**, (center) accepted the Most Outstanding New Member Program award and house director **Tamara Dunford** (right) was named Outstanding House Director.



Officers from **DELTA OMICRON, Iowa State**, are presented with the University's Fraternal Excellence Award. This is the third consecutive year the chapter has earned the award, which is the highest honor awarded to Greek-letter organizations during Greek Week.



**ZETA XI, Yale**, members enjoy dinner and sisterhood at a local restaurant.



## Kappas "Konnnect" with Their Community

Members of BETA KAPPA, *Idaho*, volunteered their time in the first-ever "Kappas Konnect" philanthropy donating more than 300 service hours.

"Kappas Konnect" works like this — the chapter divided into groups and "connected" with the Moscow, Idaho, community by reaching out to organizations in Moscow and helping them during the fall season. "We are trying to get back to service-related projects. By getting involved with these types of projects, the women in the chapter can actually see the difference that they are making and can discover the joy of giving," explains one chapter member.

The purpose behind doing this type of project is to allow each member to find an organization she cares about and enhance her desire to help others. It is also a great way to make contacts within community organizations. The chapter wants community residents to know that we want to develop friendships with them, not just attend school in their community.

Chapter members worked on a native tree-planting project for the Palouse-Clearwater Environmental Institute, an auction benefiting Latah Health Services, walking dogs for the Humane Society of Palouse, a clean-up day for Adult Day Care at Gritman Medical Center and held food and supplies drives for Alternatives to Violence of Palouse. We did not stop there; members also helped to bolster the Greek spirit on campus by participating in other Greek organizations' projects.

The members of Beta Kappa enjoyed working together and finding the true meaning of service. We were able to realize that the principles on which we developed "Kappas Konnect" are really true — "To the world you may be one person, but to one person you are the world."

— By JENNY SUE ANCHONDO, *Idaho*







Members of **BETA KAPPA, Idaho**, volunteer at the Humane Society and spend the day walking dogs at the shelter.

**KATELIN FOWLER, HEATHER OWES and LEXIE ELLIOT, Idaho**, collect donations for Alternatives to Violence of Palouse.

**ALLISON ROLIG and ERIN JOSLIN, Idaho**, transport trees for the Clearwater Environmental Institute during "Kappas Konnect."



## Good Ideas from Chapter Advisory Boards and House Boards



Before every House Board meeting, we have dessert and social time with the actives. We specifically hold our meetings when the chapter representatives are available. We ask chapter members to bring ideas to us and we make a concerted effort to listen to them. This has been the secret of our success!

— **GAMMA ZETA, Arizona**, House Board



Hold a Chapter Council/Advisory Board pancake breakfast at an adviser's home. This "non-meeting" is a huge success! The officers enjoy not only getting off campus but also bonding with advisers without facing a long meeting agenda.

— **GAMMA KAPPA, William and Mary**, Advisory Board



In order to welcome new board members, we hold an Advisory Board wrap-up potluck barbecue in the spring. Notebooks are exchanged; plans are set for recruitment and move-in procedures for the fall.

— **BETA MU, Colorado**, Advisory Board



Plans are in the works for a joint meeting with two House Boards. Ideas shared will include: meeting planning, house department, communication, building management and leadership.

— **BETA MU, Colorado**, and  
**EPSILON BETA, Colorado State**, House Boards



All of our advisers live at least two hours away from the university. In an attempt to become more "visible," we made a large poster with a picture of the adviser, the office she advises and her hobbies. The poster is hung in a prominent place in the chapter house. When we visit, the collegians recognize us immediately and communication has improved greatly.

— **GAMMA MU, Oregon State**, Advisory Board

— *Compiled by* **SUSANNE WOLFF VANDER HEYDEN**,  
*Washington State, Advisory Board/  
Housing Committee member, Region 6*



# Honor Societies

Honors list based on Collegiate Honors Reports received at Fraternity Headquarters by June 15, 2003.

## MORTAR BOARD

(Senior scholarship/leadership society)

DELTA, *Indiana*  
Lauren Berman  
Hilary Oleon

THETA, *Missouri*  
Emily Compton  
Heather Cooper  
Meghan McGuire  
Lauren Tischler

MU, *Butler*  
Andrea Butler  
Jalene Campbell  
Sarah Hundagen  
Lori Mikesell  
Meghan Woodard

RHO<sup>A</sup>, *Ohio Wesleyan*  
Becky VanFossen  
Emily Kenny

PI<sup>A</sup>, *UC Berkeley*  
Erin Hopkins

CHI, *Minnesota*  
Ashley Kuntz  
Jodi Underwood

OMEGA, *Kansas*  
Alicia Peterson  
Carolyn Rhoades  
Crissa Seymour

BETA XI, *Texas*  
Brooke Ginsberg  
Katie Cook  
Kelly Vander Ploeg

GAMMA ZETA, *Arizona*  
Molly Engelhard

GAMMA XI, *UCLA*  
Carly Nese

GAMMA NU, *Arkansas*  
Amanda Bell

GAMMA PI, *Alabama*  
Mary Kinney Lowe

GAMMA PHI,  
*Southern Methodist*  
Cristin Lavelle  
Farrar Johnson

Kristen Hatcher  
Pele Peacock

DELTA ZETA,  
*Colorado College*  
Kitren Fischer  
Jennifer Shaw  
Kimberly Kisabeth

DELTA IOTA, *LSU*  
Calli Boudreaux  
Emily Couvillon  
Cynthia May  
Amy Weiner

DELTA OMICRON, *Iowa State*  
Cassie Bacon  
Courtney Blomgren  
Kyle Davis

DELTA PI, *Tulsa*  
Dawn Schulte

Delta Psi, *Texas Tech.*  
Madeline Boles  
Abby Clark  
Tawny Mertes  
Jessica Price  
Ann Marie Saleh

EPSILON ALPHA,  
*Texas Christian*  
Kell Lozier

EPSILON ZETA, *Florida State*  
Megan Weatherford  
Angela Wilhelm

EPSILON ETA, *Auburn*  
Heather Fillmore  
Julie King

EPSILON IOTA, *Puget Sound*  
Elizabeth Calora  
Brittany Henderson

EPSILON NU, *Vanderbilt*  
Emily Dutterer  
Allyson Murray  
Hilary Samples  
Quince Sauer

HEATHER COOPER, MEGHAN  
MCGUIRE, LAUREN TISCHLER, and  
EMILY COMPTON, all *Missouri*, are  
proud to be inducted into the  
Mortar Board Society.

EPSILON UPSILON, *Baylor*  
Hillary Skelton

ZETA KAPPA, *Bowling Green*  
Lindsey Gable  
Tracy Lahote

ZETA SIGMA, *North Texas*  
Mary Beth Naus

## PHI BETA KAPPA

(Senior scholarship society)

EPSILON, *Illinois Wesleyan*  
Christina Catalano  
Susan Roth

RHO<sup>A</sup>, *Ohio Wesleyan*  
Julia Geiger

CHI, *Minnesota*  
Megan Barnett

BETA XI, *Texas*  
Amanda Day

GAMMA ZETA, *Arizona*  
Kristin Giseel  
Mariah Smith  
Erin Weir  
Kristin Wolf

GAMMA IOTA,  
*Wash. Univ. (St. Louis)*  
Emily Bloom

GAMMA PI, *Alabama*  
Mary Kinney Lowe

GAMMA PHI,  
*Southern Methodist*  
Lilly Albritton

DELTA ALPHA, *Penn State*  
Aimee Betz

Anastasia George  
Courtney McCormick

DELTA ZETA, *Colorado College*  
Kitren Fischer  
Kristin Payne

EPSILON BETA, *Colorado State*  
Kyleigh Lotz  
Kate Odom  
Monica Owens  
Hannah Sipple

EPSILON GAMMA,  
*North Carolina*  
Jocelyn Fina  
Laura Pence  
Liz Scanlon

EPSILON ZETA, *Florida State*  
Julia Coffin

EPSILON OMICRON, *UC Davis*  
Brooke Dayton

EPSILON UPSILON, *Baylor*  
Rebecca Cutbirth  
Lila McDowell

ZETA BETA, *Lafayette*  
Elizabeth Fineman

ZETA OMICRON, *Richmond*  
Katherine Ponzio

The Key applauds our members who have been invited to join these and other honor societies. Due to space limitations, only newly inducted members of Mortar Board and Phi Beta Kappa are listed.





# Scholastic Honors

Based on reports received at Headquarters by July 21, 2003. Part 2 of Fall 2002 data.



## Chapters meeting or exceeding the All-Sorority GPA on their campus:

### REGION 1

#### Beta Province

Bucknell  
Allegheny

### REGION 2

#### Gamma Province

Cincinnati

### REGION 3

#### Mu Province

Furman

#### Xi Province

Tulane

### REGION 4

#### Delta Province

DePauw  
Hillsdale  
Michigan State

#### Epsilon Province

Wisconsin

### REGION 5

#### Eta Province

Colorado College

## Kappas with a 4.0 GPA:

### REGION 1

#### Beta Province

Bucknell:

Leah Simonetta  
Kristin Abromitis  
Whitney Russell

### REGION 2

#### Gamma Province

Cincinnati:

Jessica Kinnemeyer  
Sarah Craig

#### Lambda Province

Washington and Lee:

Jessica Bennett  
Allen Claire Elkins  
Marriott Horton  
Elizabeth Raulston  
Jeanne Upchurch  
Anne Young

### REGION 3

#### Mu Province

Florida:

Emily Banks  
Lanna Daniel  
Saira Fida

Katherine Hardeman

Tara Higginbotham

Megan Hoot

Gretchen Lehman

Sarah Stanton

Sarah Stratton

Lindsay Wilson

#### Xi Province

LSU:

Susan Angerholzer

Beth Cailouet

Donna Cameron

Jennifer Cisneros

Louise Corle

Virginia Couvillon

Julianna Dawes

Meghan Doody

Leah Duhon

Katie Foote

Sara Mullins

Danique Occhi

Markelle Palombo

Jeannie Schindler

Christine St. Germain

Patricia Thompson

Sarah Trufant

Tulane:

Jacklyn Blecker

Emily Elliott

Lisa Turner

### REGION 4

#### Delta Province

Hillsdale:

Terah Malette

Juliet Manto

Amanda Proctor

Michigan State:

Jennifer Lefere

#### Epsilon Province

Lawrence:

Karina Hunt

Northwestern:

Karen Brooks

Elizabeth Burrows

Jennifer Carter

Elizabeth Fisher

Heidi Gluck

Lillian Lardy

Sarah Mintz

Lindsay Rickel

Kaitlin Young

Alexandra Zak

Wisconsin:

Jacqueline Berg

Leah Kirschling

Carrie Peterson

Annie Thompson

Erika Wilson

Amy Young

### REGION 6

#### Pi Province

Oregon State:

Kristen Cook

Katie DeVisser

Kristin Diez

Adrienne Goyne

Ashley Gunderson

Rebecca Johanson

Jennifer Keudell

Sarah McCollister

Angela Kapalczynski

Oregon:

Lauren Copland

Valerie Hunt

#### Kappa Province

Arizona State:

Megan Farkas

Erika Patching

UC Santa Barbara:

Justine Belytschko

Erin Loughlin

Katrin Rhodes

UC Irvine:

Nhu Moon

Karol Lu

Michelle Shimasaki

UCLA:

Lauren Kilpatrick

Toni Maraviglia

Katherine Steele

UC Riverside:

Danielle Vu

Nicole Roberts

kappas connect

family

Friends

Kappas

Write back and forth in a Circle Journey book with Kappas, friends and family. Use your Circle Journey to share pictures, tell stories, write ideas, enjoy friends. Capture your memories.....forever.

Your Circle Journey pages will capture your friendships.

\$5 from each Circle Journey purchase online goes directly to Kappa programs!

Pick from lots of designs.

Seen on NBC with Katie Couric, CBS, Academy Awards, RedBook, Real Simple, McCall's and more.

[www.circlejourney.com/kappa](http://www.circlejourney.com/kappa)





A Purdue-Northwestern football game is the setting for a 45-year reunion of **GAMMA DELTA**, *Purdue*, alumnae. Here they are aboard the famous "Purdue Boilermaker Special."



Nine **DELTA GAMMA**, *Michigan State*, alumnae gather in northern Michigan for a reunion. Many had not seen each other since college.



The **BETA MU**, *Colorado*, class of 1998 enjoys its first reunion in Phoenix. **JACQUELYN EISENBERG**, **SKYE MASAKI**, **BRI GUSTAFSON**, **LAURA OLSON** and **NICHOL OSBORN** enjoyed hot air ballooning, a steamboat ride down Canyon Lake, panning for gold, a stagecoach ride, swimming in pouring rain, s'mores by the fire and more.





DINA KRAUSE SCHMID, EILEEN CANEPARI, ALEXIS DE PLANQUE, KIRSTEN AMBROSE and SUZANNE ROTHFELD STEVEN, alumnae of DELTA XI, *Carnegie Mellon*, gather for a 10-year reunion visiting familiar Pittsburgh sites from college days.



GAMMA ETA, *Washington State*, alumnae LINDA AYERS BIKO, SUE ELLEN BRADY RITCHEY, SUSAN RASMUSSEN OWENS and SHARON WILLIAMS BAUGHN celebrate their 60th birthdays in Pebble Beach.

# Kappa Reunions!

Nine DELTA ZETA, *Colorado College*, alumnae enjoy their 30-year reunion.



When members of the 1936 pledge class of GAMMA OMEGA, *Denison*, celebrated their 80th birthdays in 1998, they had such a great time they continue to meet annually. Here they enjoy a recent reunion in San Marino, Calif.





MARY SUZANNE (SUE) VENDLEY MUMBY, *Purdue*, President of FAIRFIELD COUNTY (CONN.) ALUMNAE ASSOCIATION, shares a moment during Rho Province Meeting with Province Director of Alumnae CLAIRE ST. MARTIN COLLINS, *Emory*, and Fraternity President ANN STAFFORD TRUESDELL, *Ohio Wesleyan*. ZETA XI CHAPTER, *Yale*, co-hosted the meeting with the alumnae association.

Philbrook Museum of Art volunteers attend a reception at the Italianate villa and 23 acres of gardens which houses artwork near downtown Tulsa, Okla. Shown are HELEN JO TAYLOR HARDWICK, *Oklahoma*, MARILYN MALONEY RIGGS, *Kansas*, and MILLIE ROBINSON MILLSPAUGH, *Oklahoma State*.



BEVERLY BECKER SHEERER, *Pittsburgh*, posing her champion beagle, Jackpot, and DAMARA BOLTE, *Purdue*, have known each other for years through dog shows — but recently they discovered their Kappa bond. Damara judged the Beagle National Specialty in Aldie, Va.

CINDY SPISHAK, *William and Mary*, shows off the blue-and-blue afghan and Kappa pillow she made. Cindy serves as a long-distance adviser to ZETA TAU CHAPTER, *Washington and Lee*, where advisers are in short supply.







BETA NU, *Ohio State*, alumnae and collegians are joined by ETA ZETA, *John Carroll*, members and ZETA KAPPA, *Bowling Green*, alumnae at Camp CHOPs in Akron, Ohio, for a "Queen for a Day," party for the girls at this nonprofit summer camp sponsored by the Akron Children's Hospital. The campers are from the Oncology/Hematology unit at the hospital. For more information, visit [www.qfad.org](http://www.qfad.org).



ANDREA LAMBERTSON, *Boston*, left the Boston area after 30 years to become assistant manager of an art gallery in Hudson, N.Y. She displays this painting with Kappa colors, an oil of phlox by Emily Rollinson Poucher, circa 1930.



THE SOUTHERN AND NORTHERN ORANGE COUNTY (CALIF.) ALUMNAE ASSOCIATIONS host a book and author dinner to benefit Literacy Volunteers of America. Chairman SUE STARR GRAHAM, *Purdue*, and KATRIN HECHT BANHAUER, *Massachusetts*, chat with Jonathan Fraser Light, author of *The Cultural Encyclopedia of Baseball*.



The HUTCHINSON (KAN.) ALUMNAE ASSOCIATION celebrates Founders Day with a Kappa history trivia game.



HEATHER FEAGANS, *Colorado State*, has been named one of Kansas City's "Top 40 Under 40."



## Philanthropist Learned Giving at an Early Age

ANN SIMMONS ALSPAUGH, *Oklahoma*, has received awards for countless philanthropic activities including "Outstanding Philanthropist," "Woman of the Year in Philanthropy," "Women Who Make a Difference," and the Oklahoma Hall of Fame.

Her grandfather built the first oil refinery in Duncan, Okla., in the 1920s and she grew up learning the lessons of giving back to her community. She says, "At Christmas, my father, thankful for all our blessings, would load the station wagon with toys and food for those less fortunate."

Ann also is generous with her time, serving on several boards in Oklahoma City such as the Oklahoma Medical Research Foundation, Allied Arts Foundation and Oklahoma City University. "I love the organizations that I've worked with, and it makes me feel good to think I might have helped some people along the way."



ANN SIMMONS ALSPAUGH, *Oklahoma*, has won numerous awards for her philanthropic work.

## Kappas Make "Top 40 Under 40" in Kansas City and Phoenix

HEATHER ANDERSON FEAGANS, *Colorado State*, has been selected one of Kansas City's top "40 Under 40" professionals. With degrees in exercise and sports science and a master's degree in exercise physiology, Heather works as a central nervous system specialist and area sales trainer for Pennsylvania-based Cephalon.

Heather is an adviser to OMEGA CHAPTER, *Kansas*, and is KANSAS CITY ALUMNAE ASSOCIATION's Public Relations Chairman for Kappa Kappa Gamma's General Convention to be held there in 2004. She volunteers for the Kansas Wildscape Foundation and SAFARIZ, a friends of the zoo organization, as well as the local Leukemia and Lymphoma Society.

JULIE KROON ALVARADO, *Arizona State*, Profiles Editor for *The Key*, has been included in the "Top 40 Under 40" in Phoenix. As community affairs manager for General Dynamics Decision Systems, she has served as company spokesperson and was designated a "next-generation leader."

Julie serves on several boards and councils including the Valley Big Brothers-Big Sisters and Mercy's Chandler Hospital advisory board. Previously while working for Motorola, she created the Scottsdale Community Liaison Council to connect the company with area residents through community projects. She was co-creator of the Arizona State University/Motorola Great Communities Grants Program, placing more than \$1 million into partnership projects between ASU and community-based organizations.

Julie also helped create the *Children and Violence Town Hall* on CBS with Dan Rather. For her





**JULIE KROON ALVARADO**, *Arizona State*, Profiles Editor for *The Key*, has been named one of the Phoenix Area's "Top 40 Under 40" professionals.

tireless efforts on behalf of people with disabilities, she received an award from the Centers for Habilitation. She also devotes countless volunteer hours to Kappa Kappa Gamma and The United Way.

## New President of Pharmacy Society

When **DEBRA SPRINGER DEVEREAUX**, *Colorado*, was included in *Who's Who Among American College Students* in 1975, it was a sign of things to come. Debra, a pharmacy professor at the University of Wyoming, has



**DEBRA SPRINGER DEVEREAUX**, *Colorado*, a pharmacy professor at the University of Wyoming is the new president of the American Society of Health-System Pharmacists.

been elected president of the American Society of Health-System Pharmacists (ASHP).

With a national membership of 31,000, ASHP is a professional organization that represents pharmacists who practice primarily in hospitals and healthcare systems.

Debra is manager of the Drug Utilization Review Program at the University of Wyoming's School of Pharmacy. Her ASHP service includes Task Force on Assisted Suicide, Council on Administrative Affairs and Practice Management Advisory Group.

Debra says Kappa Kappa Gamma taught her organizational skills as Pledge Trainer (now New Member Chairman) and Rush (now Recruitment) Chairman for her chapter. She says, "Once you've organized rush, you can organize anything." She has been a member of the **DENVER ALUMNAE ASSOCIATION** and is currently active with the **FT. COLLINS (COLO.) ALUMNAE ASSOCIATION**. She also served as House Board President for **EPSILON BETA CHAPTER, Colorado State**.



**BROOKE MATHEWS**, *William and Mary*, dedicates her life to helping others.

## Recent Grad Continues Helping Others

Kappa Kappa Gamma's tradition of volunteerism is evident in members like **BROOKE MATHEWS**, *William and Mary*, who was nominated to receive a Tradition of Service Award recognizing graduating seniors for their volunteer service.

Brooke spent last summer as a volunteer with a nongovernmental organization in Bosnia teaching English to children ages 8-14. She worked to improve their self-esteem and taught them nonviolent forms of communication. On another occasion she organized a



spring break trip to Washington, D.C., transporting peers to volunteer at a shelter for recovering, addicted homeless women. She also volunteered on campus sponsoring monthly Red Cross blood drives and has been a summer tutor for a child with cerebral palsy.

Brooke served GAMMA KAPPA Chapter as Marshal and Vice President of Standards, was on the University Center Activities Board and wrote for *The Flat Hat*, William and Mary's campus newspaper. Following her graduation she began teaching at an inner-city school in New York City.

## "Paper Kaper" Proceeds Go to the Dogs

ST. LOUIS ALUMNAE ASSOCIATION members take part in "Paper Kaper," wrapping packages for Valentine's Day and Mother's Day at a local mall to raise funds for CHAMPS Assistance Dogs, Inc., a nonprofit organization that provides service dogs to people with disabilities.

On each occasion Kappas wrapped packages for three days free of charge. Donations were collected for CHAMPS, which offers its canine services free of charge and receives no state or federal funding.



JUDY WOLTERS, Washington University (St. Louis), (left), Philanthropy Chairman for the ST. LOUIS ALUMNAE ASSOCIATION, is shown with Diane Peters, Director of CHAMPS, and Jazz, a standard poodle, one of many service dogs aiding people with disabilities.



CiCi CHENEY WILLIAMSON, Maryland, cookbook author and travel writer, has published *The Best of Virginia Farms*, reflecting her passion for the foods of her state. The book is the basis for a coming PBS television special on Virginia farms.

## Cookbook Features Diversity and History of Virginia's Farms

Though cookbook author and travel writer CAROL (CiCi) CHENEY WILLIAMSON, Maryland, has visited more than 80 countries, the Virginia resident loves coming home to the diverse foods of her state. She enjoys creating recipes from the bounty of the Chesapeake Bay and the farmlands of the Blue Ridge Mountains and Shenandoah Valley.

Her latest book, *The Best of Virginia Farms*, reflects her passion. The large-format cookbook offers a tour and history of the state's agriculture. Published by Menasha Ridge Press, 2003, it includes 17 tours, 260 recipes and eight triple-foldouts. It is the basis for the coming PBS television series, *The Best of Virginia Farms*.

CiCi, a home economist and food columnist, was the guest speaker at a "Virginia Farms Brunch" hosted by the NORTHERN VIRGINIA ALUMNAE ASSOCIATION where she is a member. Kappas prepared recipes from her book and she spoke about the state's agricultural history since Jamestown, 1607. CiCi is a former Features Editor and Alumna News Editor of *The Key* and was president of *Les Dames d'Escoffier International*, a women's culinary association.



# A Kappa Appears on WWII Poster

JANE SMITH WATSON, *Ohio State*, enjoyed a brief career as a model in the 1940s and was featured on a famous World War II poster that has become a part of history. Jane was a student at Ohio State when the Japanese attacked Pearl Harbor on Dec. 7, 1941. She recalls that not many women went to college then, so there were 10 men to every one woman on campus. The day after Pearl Harbor, "half of Ohio State was gone ... all volunteering to serve."

Jane married soon after, and when her husband, Capt. John Porter, was deployed to Indochina, she left for New York, hoping to become a Pan American stewardess. She modeled to help pay the bills and through the Harry Conover agency posed for a variety of publications.

The poster, titled "So Proudly We Serve," shows Jane in the uniform of the U.S. Marine Corps Women's Reserve with military planes in the background. Alex Raymond, the artist behind the "Flash Gordon" comic strip, designed the poster.

Soon after the poster was drawn, Jane learned that her husband had been killed in action. She would later marry a paratrooper, Patrick Watson, in 1944 and enjoy a long marriage until his death in 2002. Jane puts modeling a distant second to the life she led as a wife and mother of four. View WWII posters at [www.history.navy.mil/ac/posters/wwiwomen/wavep1.htm](http://www.history.navy.mil/ac/posters/wwiwomen/wavep1.htm) or [womenshistory.about.com/library/pic/bl\\_p\\_wwii\\_posters\\_index.htm](http://womenshistory.about.com/library/pic/bl_p_wwii_posters_index.htm).



JANE SMITH WATSON, *Ohio State*, enjoys retirement in Pensacola. She posed at age 22 for a World War II recruitment poster for the U.S. Marine Corps Women's Reserves titled "So Proudly We Serve."



BARBARA KUMLER BIRD, *Oklahoma*, (second from left), with co-chairman Lee Ann Fore, a Pi Beta Phi, USGA representative Mary Lopuzynski, and co-chairman Bernie Domblaser, a Kappa Alpha Theta, — truly a Panhellenic committee.

## Volunteering Is Par for the Course

When BARBARA KUMLER BIRD, *Oklahoma*, was asked by the USGA to coordinate 1,000 volunteers for the 2002 U.S. Open in Bethpage, N.Y., she was asked by some, "Why in the world would you volunteer for a job like that?" Barbara's answer was simple: "When you volunteer, you receive so much more than you give."

When the U.S. Open Golf Championship was held at Southern Hills Country Club in Tulsa in June of 2001, the United States Golf Association used the club's membership for volunteers. Barbara was asked to oversee the merchandise committee, scheduling volunteers over an 11-day period, each person into three-hour shifts.

When it came time for the 2002 U. S. Open to be held in Bethpage on Long Island, it was at a public course, which has no membership to draw on for volunteers. So Barbara and her Tulsa crew were recruited to man the merchandise pavilion, which was the size of a football field. On Championship Day, which is always Father's Day, there were 645 merchandise volunteers working 46 cash registers to support 40 vendors.

Barbara's volunteer life began in college with Kappa and continued with the DENVER ALUMNAE ASSOCIATION and as an adviser for BETA MU, *Colorado*, and DELTA PI, *Tulsa*. Her volunteering for golf began with the Tulsa Junior League when they held Pro-Am tournaments as fund-raising events.

When not volunteering, Barbara works part time in the marketing department for an online investment company. She is able to do her volunteering and work before school lets out so she can spend time with her sons.



# Kappa Authors

## Live Younger Longer – with These Eleven Keys

By **MARGARET (PEGGY) HARDY CANNING**, Arizona,  
with Barbara C. McNurlin  
Infinity Publishing, 408 pgs.



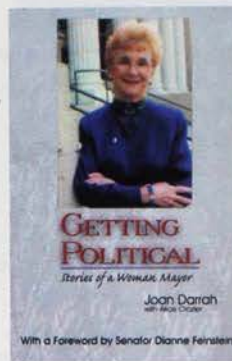
A mother and daughter collaboration, this book aims to help people of all ages look, feel and act younger and healthier. Eleven key areas emphasizing the “body/mind/spirit” approach give readers current recommendations on nutrition, exercise, attitude and spirituality.

Graduating with a bachelor’s degree in foods and nutrition, Peggy later returned to school at age 63 for her master’s in nutrition. She has worked as a consultant and public speaker ever since and has enjoyed her membership in the NORTH SAN DIEGO COUNTY ALUMNA ASSOCIATION for 40 years. Parents of four children, Peggy and husband Dick published a monthly report on the business use of computers for 23 years and now enjoy many retirement activities. For some of Peggy’s anti-aging tips, visit [www.longevitykeys.com](http://www.longevitykeys.com).

## Getting Political

By **JOAN VAN DEN AKKER DARAH**, UC Berkeley,  
with Alice Crozier  
Quill Driver Books, 261 pgs.

Referred to as “a middle-aged society lady,” Joan had never held an elective office. She had taught high school English, married, had three children and been a community volunteer, serving as President of Junior League and United Way. She has also served on the University of the Pacific Board of Regents for 13 years and ran a public relations business from her home.



Joan was elected to two terms as mayor of Stockton, Calif., during a pivotal period in the city’s history when a “rotting downtown core” moved to revitalization and respect for leadership. She says, “Many women in many cities, large and small, can do what I did,” based on

their backgrounds in business and nonprofit organizations. She adds, “One of the hardest tasks of practical politics is that of choosing those issues on which principle needs to yield to expediency if the politician is to remain viable and live to fight another day.”

## Bridging Beyond

By **KATHLEEN BENNER DUBLE**, Miami (Ohio)  
Penguin Putnam Books for Young Readers,  
208 pgs.

This suspenseful debut novel is based on a near-death experience Kathleen’s grandmother had while on a train bridge in Illinois. Linking the present with vivid episodes from the 1920s, the story takes readers on an exploration of the mind into a new psychological theory called genetic memory.

Kathleen resides in Boxford, Mass., with her husband and their two children. For more information, visit [www.kathleenduble.com](http://www.kathleenduble.com).



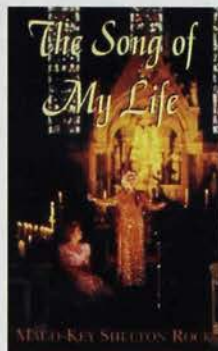
## The Song of My Life

By **MAUD-KEY SHELTON ROCK**, Colorado, and  
William Pennell Rock, Jr.  
Xlibris Corp., 273 pgs.

These pages are the memoirs of a remarkable woman whose life and singing career have extended well into her 90s. Her devotion to family, religion and art make up the rich tapestry of Maud-Key Shelton Rock’s life.

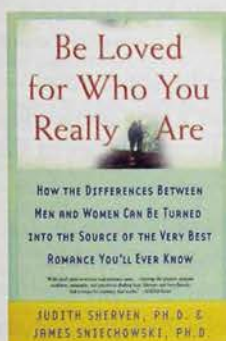


The youngest of seven children of a wealthy land baron in Kentucky, Maud was influenced by the romance of opera and sang and studied in New York, Chicago, elsewhere in the United States and Germany. Although she stopped singing to raise three children with her husband, Bill, with whom she traveled extensively, she began singing again in her 80s and continues to sing today.



## Be Loved for Who You Really Are

By JUDITH SHERVEN, Ph.D., UCLA, and James Sniechowski, Ph.D. St. Martin's Griffin, 301 pgs.



No matter how much two people have in common, when they commit to a relationship they soon discover all the ways they are different. Failure comes when they struggle to get each other to fit into their expectation of how things "should be," treating their differences as something to be fixed. This book outlines a natural and predictable path that love requires — enabling one to better understand the

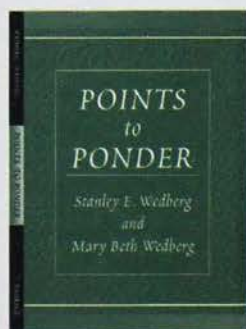
challenges and pitfalls he or she will encounter and not to confuse conflicts with disaster or failure.

A renowned husband-wife psychology team, James and Judith have been guest experts on more than 700 TV and radio programs including *Oprah*, *The View* and *48 Hours* to name a few. For more information, visit [www.themagicofdifferences.com](http://www.themagicofdifferences.com).

## Points to Ponder

By Stanley E. Wedberg and MARY BETH STEWART WEDBERG, Colorado College

A 65-year Kappa and a member of the SAN DIEGUITO ALUMNAE ASSOCIATION, Mary helped her husband, Stanley, compile their favorite anecdotes, quotations and sayings into this delightful little



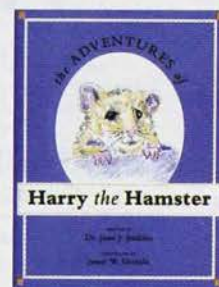
book of wit and wisdom. Perfect for finding just the right addition to a speech or toast, *Points to Ponder* is also a great gift idea.

## The Adventures of Harry the Hamster

By DR. JANE J. JENKINS, Washington Univ., (St. Louis), Campbell House Museum Press, 28 pgs.

Creator of the PBS series, *The Magic Teapot*, during the 1970s, Jane is a renowned storyteller appearing at private parties, festivals or college lectures. In 1976, Jane wrote *The Little Fir Tree* for children with disabilities. A member of a group called The Spellbinders ([www.storyteller.net](http://www.storyteller.net)), Jane encourages parents and educators to tell stories and read to children to help them develop speech and reading skills.

Her most recent book features the adventures of chocolate-loving *Harry the Hamster* who writes poems and escapes from his cage to explore the house.

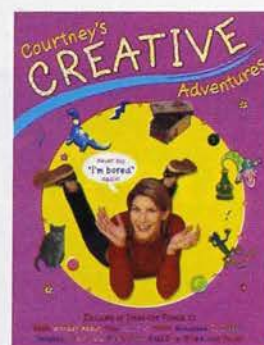


## Courtney's Creative Adventures

By COURTNEY WATKINS, Kansas Little, Brown and Company Children's Publishing, 96 pgs.

Written from a 10-year-old girl's perspective, this book is the perfect anti-boredom defense. Complete with fun and imaginative activities, games, recipes, crafts and more — there is something for everyone.

Courtney is a creative-thinking correspondent who has written this book to help enable children to create their own enriching experiences and exercise their creativity. To learn more, visit [www.courtneywatkins.com](http://www.courtneywatkins.com).



**EDITOR'S NOTE:** If you have submitted a book, please be patient! Books are reviewed in the order in which they are received. Books and author bios may be submitted to The Key, P.O. Box 38, Columbus, OH 43216-0038. Books will be kept in the Fraternity archives.





CAMILLE PERKINS LAVINGTON, *Colorado*, a noted image consultant and Alumnae Achievement Award recipient, has donated numerous original works of art by her late son, David, to hospitals.

## Where Are They Now?

**T**he Key Editorial Board often wonders what some of our previously featured members are doing today. Here's an update on one of our 1994 Alumnae Achievement Award recipients CAMILLE PERKINS LAVINGTON, *Colorado*.

Author of *You've Only Got Three Seconds — How to Make the Right Impression in Your Business and Social Life* (Doubleday), Camille is a prominent corporate image consultant and public speaker. Recently, Camille donated 150 pieces of art to The New York Hospital for Special Surgery (Orthopedic) as a living memorial for her late son, David. She also has given more than 50 pieces to the Los Angeles Orthopedic Hospital. Many of these valuable prints and sculptures were shown in the Van Gogh Museum in Holland.

Camille is a member of the Board of the United Nations Association, the nonpartisan organization that

supports the work of the United Nations and encourages civic participation in important social and economic issues. Through its work, UNA-USA educates Americans about the work of the United Nations.

Camille has been invited to judge the September 2003 Miss America Scholarship Pageant in Atlantic City televised on ABC. She also is working on a new book to be published this winter.

Active in the Junior League, Camille obtained a truck full of plants and arranged for a new garden for the homeless in Brooklyn. She is also a member of the City Garden Club of New York.

Camille continues to enjoy her membership in Kappa Kappa Gamma and says, "Without a doubt, Kappa was the single strongest influence in my life ... ." For more information, visit [www.executive-image.com](http://www.executive-image.com).

## Are You an Owl Out on a Limb?

### Continue the Kappa Experience...

*by enjoying the friendships and fun that come with participation in an alumnae association.*

Please provide the following information via e-mail to [kappaowls@kappa.org](mailto:kappaowls@kappa.org) or complete the form below and send it to SALLY COWDERY SPENCER, *St. Lawrence*. She will put you in touch with the alumnae association nearest you or with your Province Director of Alumnae.

**YES! I want to know more about Kappa Kappa Gamma alumnae association opportunities near me!**

Name: \_\_\_\_\_ Street Address: \_\_\_\_\_

City: \_\_\_\_\_ State/Province: \_\_\_\_\_ Postal Code: \_\_\_\_\_

Telephone: \_\_\_\_ / \_\_\_\_\_ College/University: \_\_\_\_\_ Init. Date: \_\_\_\_ / \_\_\_\_

☐ New Address? ☐ New to Area? E-mail: \_\_\_\_\_

Last Address: \_\_\_\_\_

Mail to: SALLY COWDERY SPENCER, *St. Lawrence*, 2 Butterback Lane, Savannah, GA 31411 ([kappaowls@kappa.org](mailto:kappaowls@kappa.org))





# in memoriam

These names were submitted to Headquarters between April 10, and July 28, 2003.

## AKRON, UNIVERSITY OF

Link, Nancy Jane Schrady, '53, d. 05/02  
Miller, Mary Bundy Kennedy, '36, d. 05/03

## ALABAMA, UNIVERSITY OF

Bussey, Betty Temple Rutland, '47, d. 07/03  
Christopher, Sallie Ralls Bellenger, '51, d. 02/03  
Hubbard, Susan Morris, '62, d. 04/02  
Johnston, Mary Tabb Lancaster, '34, d. 05/03  
Weitzel, Katherine Steele Byars, '31, d. 06/03

## ALLEGHENY COLLEGE

Gilmore, Adalou Randall, '41, d. 4/03  
Kilgore, Lois Jeanne Morse, '44, d. 03/03  
Luvaas, Vera Lee Hampson, '44, d. 06/03

## ARIZONA, UNIVERSITY OF

Lewis, Jewell McFarland, '47, d. 04/03

## ARKANSAS, UNIVERSITY OF

Davis, Patty Virginia Wasson, '45, d. 08/00  
Flack, Julia Jane Norton, '54, d. 06/03  
Garner, Mary Ruth Pate, '39, d. 05/03  
Heimert, Janet Sherrill Ragan, '59, d. 01/01  
Lauck, Marjorie Jane Sims, '42, d. 12/02

## \*BOSTON UNIVERSITY

Allan, Ethel Miriam Baker, '20, d. 02/03

## BRITISH COLUMBIA, UNIV. OF

Phillips, Sallie Buell Carter, '30, d. 07/03

## BUCKNELL UNIVERSITY

Lloyd, Dorothy Harvey, '50, d. 6/03

## CALIFORNIA STATE U., FRESNO

Kitchen, Nancy Brown, '54, d. 04/02  
Neighbors, Susan Cornwell, '57, d. 04/03  
Ryan, Rosamond Mayo, '54, d. 10/02

## CALIFORNIA, U. OF, BERKELEY

Green, Coralita Olney, '29, d. 04/03

## CALIFORNIA, U. OF, LOS ANGELES

Dickerson, Gail Eugenia Soyster, '25, d. 04/03

## CARNEGIE-MELLON UNIVERSITY

Crantz, Lucy Marie Seibert, '44, d. 11/02  
Henneberger, Mary Keefer, '45, d. 6/03  
Keating, Ann McDonald Rodgers, '44, d. 05/03

## CINCINNATI, UNIVERSITY OF

Edgar, Clara Louise Clark, '32, d. 03/03  
Yamaguchi, Nita Lou Bryant, '53, d. 12/02

## COLGATE UNIVERSITY

Johnson, Jennifer, '99, d. 06/03  
Murray, Constance Postlethwaite, '32, d. 06/03  
Parvin, Ada Louise Slate, '35, d. 01/03  
Woodruff, Ruth Mildred Stewart, '38, d. 04/03

## COLORADO, UNIVERSITY OF

Kelley, Mary Ann Moyer, '34, d. 03/02

## CONNECTICUT, UNIVERSITY OF

Diesel, Edith Elizabeth Wollenberg, '42, d. 05/03

## CORNELL UNIVERSITY

Whitman-Winans, Katharine Eliza Evans, '40, d. 08/02  
Whittier, Mary Ellen Kleberg, '41, d. 5/03

## DENISON UNIVERSITY

Crossland, Elizabeth Bateman, '29, d. 03/36  
Gregg, Mary Stuart Alling, '42, d. 12/02  
Rife, Betty Colton Spence, '30, d. 01/92

## DEPAUW UNIVERSITY

Hayes, Charlotte Anne Niven, '35, d. 01/03  
McCoy, Annabelle Martha McWethy, '24, d. 08/02

## DRAKE UNIVERSITY

Westerman, Dorothy Jean Vanier, '41, d. 04/03

## DUKE UNIVERSITY

Sammons, Ann Davies, '49, d. 06/03  
Sheriff, Katherine, '98, d. 06/03  
Wilson, Genedick Maxwell Clarke, '39, d. 04/03

## EMORY UNIVERSITY

Putnam, Joanne White, '64, d. 06/03

## GEORGE WASHINGTON UNIVERSITY

Darling, Mary Harmon Detwiler, '30, d. 11/02

## GEORGIA, UNIVERSITY OF

Bush, Nancy Jean Sullivan, '59, d. 11/99  
Conner, Patricia Ann Sullivan, '57, d. 03/03  
Dolson, Nancy O'Connor Cline, '58, d. 06/03  
Humphrey, Julianne Blount, '50, d. 05/03

## HILLSDALE COLLEGE

Brugler, Alice Moorhead Elliott, '31, d. 05/03  
Daily, Lois Catherine Wescott, '36, d. 04/03

## IDAHO, UNIVERSITY OF

Robinson, Eugenia St. Clair, '31, d. 02/02

## ILLINOIS, UNIVERSITY OF

Woolley, Patti Burnham, '33, d. 06/03

## INDIANA UNIVERSITY

Dalzell, Jeanne McCormack, '49, d. 05/02  
Miller, Catherine Ross Lanham, '36, d. 05/03  
Von Spreckelsen, Marjorie Elizabeth Home, '44, d. 06/03  
Whitcraft, Barbara Jean, '48, d. 06/03

## IOWA, UNIVERSITY OF

Fisher, Betty Sue Redman, '33, d. 05/03

## KANSAS STATE UNIVERSITY

Bascom, Jane Louise Halbower, '48, d. 06/02  
Crabb, Clara Jane Billingsley, '39, d. 05/03  
Haines, Nannie E. Hoyt, '28, d. 05/03  
Moser, Mary Gwyn Kimbell, '47, d. 03/03  
Murry, Anna Dean Wagaman, '39, d. 05/03

## KANSAS, UNIVERSITY OF

Bishop, Mary Ann Wells, '55, d. 04/03  
Dick, Jane Brosius, '33, d. 12/02  
Haughey, Katherine Louise Hurd, '35, d. 01/03  
McKelvey, Jane Case, '34, d. 04/03  
Wright, Margaret Geis, '34, d. 05/03

## KENTUCKY, UNIVERSITY OF

Jackson, Mary Ellen Odell, '49, d. 06/03  
Ladd, Marjorie Jean Thompson, '40, d. 02/03  
Morgan, Virginia Barry Vanness, '57, d. 06/03

## LOUISIANA STATE UNIVERSITY

Hayes, Nancy Ruth Deal, '42, d. 10/02

Nelson, Nell Carolyn Querbes, '41, d. 01/02

## \*MANITOBA, UNIVERSITY OF

Horn, Catherine Walton, '36, d. 03/03

## \*MARYLAND, UNIVERSITY OF

Brown, June Eleanor Wilcoxon, '32, d. 06/03  
Burton, Mary Edith Brossman, '30, d. 02/03  
West, Jane Maxson, '40, d. 04/03

## MIAMI UNIVERSITY

Harris, Nancy Louise De Brock, '51, d. 05/03  
Wickstrand, Nancy Jane Pritchard, '50, d. 04/03

## MICHIGAN STATE UNIVERSITY

Pretzer, Jill Barber, '61, d. 06/03  
Rice, Katharine Elizabeth Gordon, '30, d. 01/03

## MICHIGAN, UNIVERSITY OF

Bunting, Bonita May Lantz, '66, d. 12/02  
McMillen, Karen Kim Luedtke, '63, d. 09/97  
Temple, Nancy Jane Brewer, '50, d. 05/03

## \*MIDDLEBURY COLLEGE

Sadler, Barbara Livingston, '37, d. 05/03

## MINNESOTA, UNIVERSITY OF

Cowan, Bette Lee Sullivan, '36, d. 06/03  
Weible, Mary Ann Volk, '34, d. 07/01

## MISSISSIPPI, UNIVERSITY OF

Boyd, Elizabeth Woodso Bramlett, '57, d. 03/02  
Karlson, Mary Ann Holliday, '63, d. 01/00

## MISSOURI, UNIVERSITY OF

Maidt, Hilda Jane Miller, '25, d. 04/03  
Oliver, Betty Ruth Bermond, '47, d. 11/02  
Tuttle, Cecile Grieves, '26, d. 05/03  
Winkler, Marjorie Waller Beene, '34, d. 01/03

## MONMOUTH COLLEGE

Cooley, Mary Ann, '43, d. 06/01  
Garwood, Pamela Wayne, '69, d. 05/03  
Maxwell, Joanne Louise Dutcher, '50, d. 06/02

## MONTANA, UNIVERSITY OF

Mumford, Elda Robbins, '43, d. 09/02  
Mueller, Elaine Louise Baskett, '36, d. 05/03

## NEBRASKA, UNIVERSITY OF

Gibke, Betty Romans, '35, d. 03/03

## \*NORTH DAKOTA STATE UNIVERSITY

Brooks, Carol E. Lunde, '34, d. 06/03  
Whiting, Isabel Barrett, '30, d. 06/02

## NORTHWESTERN UNIVERSITY

Byron, Suzanne Jean Champine, '57, d. 01/01  
Soper, Julie Ann Kelly, '57, d. 11/00  
Walton, Barbara Ramseyer, '41, d. 03/03  
Williams, Ann Harwood Gilbert, '43, d. 03/03

## OHIO STATE UNIVERSITY

Esselburne, Frances Emerson Campbell, '30, d. 03/03  
Hendrich, Marion Allison Frame, '33, d. 06/03

## OHIO WESLEYAN UNIVERSITY

Brubaker, Marilyn Jane Myers, '43, d. 04/03  
Gleason, Elizabeth Ann Rea, '69, d. 06/03  
Kittinger, Lois June Webb, '50, d. 04/03

## OKLAHOMA STATE UNIVERSITY

Puri, Martha Ann Walker, '48, d. 02/03

## OKLAHOMA, UNIVERSITY OF

Bird, Barbara Hutchcraft, '37, d. 05/03  
Ellsworth, Marjorie Carroll Replogle, '37, d. 04/03  
Klentos, Jonnadine Kay Adams, '55, d. 01/00  
Thams, Roxanne Plummer, '38, d. 10/02

## OREGON, UNIVERSITY OF

Gleason, Virginia Mary Collins, '44, d. 05/03

## PENNSYLVANIA ST. UNIVERSITY

Gauss, Isabelle Wieland, '30, d. 12/02

## \*PENNSYLVANIA, UNIVERSITY OF

Bush, Helma Koenig Nitzsche, '30, d. 07/03  
Martindale, Ruth Lillian Snyder, '30, d. 04/03  
Pew, Joan Ferguson, '56, d. 04/86

## PITTSBURGH, UNIVERSITY OF

Sherrill, Elinore Barbara Messenger, '50, d. 10/02

## PURDUE UNIVERSITY

Fehsenfeld, Mildred Louise Cornelius, '46, d. 05/03  
Greife, Sue Ann Fisher, '64, d. 12/02  
Lewis, Betty Ann Eversole, '48, d. 06/03

## Meyer, Beverly Ann Kern,

'52, d. 02/03

## Scripture, Margaret Jane

Hamilton, '36, d. 06/03

## \*SAN JOSE STATE UNIVERSITY

Anderson, Barbara Ann Metherall, '51, d. 02/03

## SOUTHERN METHODIST UNIVERSITY

Adleta, Dorothy Orr, '34, d. 05/03  
Colville, Cynthia Lillard, '34, d. 06/03  
Donnell, Gwendolyn Selecman, '53, d. 04/03  
Gunn, Nancy Story, '68, d. 07/03  
Horn, O'Rene Tomlin, '35, d. 03/03

## Reirdon, Lorene Taliaferro,

'29, d. 1/00

## Seay, Mary Everman Saville,

'34, d. 05/03

## Stell, Mary Alice Croft,

'33, d. 04/03

## ST. LAWRENCE UNIVERSITY

Bogardus, Jean Sutherland, '39, d. 03/02

## Kollmer, Phoebe Lapham,

'36, d. 06/03

## Patry, Barbara Anne Smith,

'37, d. 04/03

## Shelley, Catherine Murphy,

'44, d. 01/02

## Valk, Pauline Esther Long,

'30, d. 04/03

## Warner, Carol Huntington,

'26, d. 04/03

## \*SWARTHMORE COLLEGE

Ewing, Florence W. Green, '21, d. 06/02

## McBride, Evelyn Taylor

Patterson, '29, d. 07/03

## SYRACUSE UNIVERSITY

Allis, Nancy, '35, d. 04/03

## Cutler, Elizabeth R. Ehnas,

'33, d. 02/03

## Doolittle, Jane Ellen King,

'36, d. 04/03

## Schmitt, Marguerite May David,

'34, d. 05/03

## Sorrie, Patricia Long Coffman,

'61, d. 05/02

## TEXAS, UNIVERSITY OF

Austin, Helen Jane Tilley, '34, d. 06/03

## Caudle, Thrace Gordon Rogers,

'28, d. 10/84

## DeShong, Dorothy Rose,

'30, d. 06/03

## Garnett, Ruth Remy Johnston,

'38, d. 07/95

Grammer, Julia Lynne Duncan, '39, d. 01/03

## Meyer, Beverly Lynne Grammer,

'69, d. 06/03

Miers, Nina Allen, '35, d. 01/02

Regent, Wilton Wade, '27, d. 03/02

Strange, Ione Hortense Monroe, '34, d. 04/03

Werlein, Marjorie Dee Sinclair, '40, d. 04/03

## TORONTO, UNIVERSITY OF

Aitchison, Mary Margaret

Horning, '48, d. 03/03

Ebbs, Adele Stratton, '28, d. 06/03

## TULANE UNIVERSITY

Kibler, Emma Caroline Dykes, '41, d. 12/02

Persons, Natalie Vivian Scott, '42, d. 09/02

## UTAH, UNIVERSITY OF

Kibbe, Evelyn Ryberg, '39, d. 05/03

Smith, Helen Taggart, '32, d. 07/03

## WASHINGTON STATE UNIVERSITY

Hobbe, Norma Lee French, '49, d. 05/03

MacMorran, Martha

Christoffersen, '34, d. 04/03

Morgan, Charlotte Norris, '26, d. 04/03

## WASHINGTON UNIVERSITY

Cunningham, Dorothea Phillips, '25, d. 07/03

## WASHINGTON, UNIVERSITY OF

Gray, Patsy, '36, d. 12/02

## WEST VIRGINIA UNIVERSITY

Davidson, Estous Lee, '31, d. 05/03

## WHITMAN COLLEGE

Burnam, Anne Winstead, '40, d. 02/03

Green, Charlotte Ann Wilson, '54, d. 06/03

Max, Phebe Burling Lind, '48, d. 05/03

## WILLIAM & MARY, COLLEGE OF

Dinges, Susan Patricia Shafer, '39, d. 05/03

Lytz, Emily Louise Parker, '34, d. 01/03

## WISCONSIN, UNIVERSITY OF

Baker, Diana Jean Wilson, '52, d. 05/01

Bush, Helen Pray Dehaven, '55, d. 06/02

Graham, Deborah Ann Sherman, '48, d. 04/03

Hughes, Barbara Ann Clare, '53, d. 06/03

Knapp, Catherine Baillie, '32, d. 04/03

Sharp, Mary Bonfield, '21, d. 11/02

## WYOMING, UNIVERSITY OF

Haley, Susan Joyce Seidel, '44, d. 05/03

Nicholas, Laurie Sue Stevens, '79, d. 07/00

\*Indicates a closed chapter

## JEWELL MCFARLAND LEWIS, Arizona,

was a 2002



# Your Generosity Is Our Generosity

— By **Patsy Bredwick Levang**, *North Dakota State*, Foundation President

**L**iving in a society filled with upheaval and uncertainty, we are grateful for our friends. The Kappa Kappa Gamma Foundation is committed to Kappa friendships. I have the distinct privilege and pleasure of meeting Kappas everywhere and I find a common thread among them. They have generous hearts and they love their Kappa sisters.

This summer while I was in Portland, Ore., I was invited to the PORTLAND ALUMNAE ASSOCIATION's executive board meeting. As I sat there in the midst of those women, I was so proud of the work they were doing as volunteers in their community, their unending generosity toward the undergraduate members in the nearby chapters and their generosity to the Kappa Kappa Gamma Foundation.

This is not a new experience for me. In every community in which I have had the opportunity to visit Kappas, I find them to be the most selfless, caring women I have ever met. This is such a blessed organization. There may be all kinds of difficult situations around us today, but we have answers for our members who find themselves in difficulty.

The Kappa Kappa Gamma Foundation is committed to the following:

- **Raising and distributing scholarship dollars**  
The Kappa Kappa Gamma Foundation provides undergraduate and graduate scholarships. With the cost of a college education spiraling upward, we feel challenged to meet the growing needs.
- **Raising and distributing Rose McGill Confidential Aid**  
Quite often, I am overcome with emotion when I read of the plight of some of our sisters. It really is a thrill to have our Foundation so committed to making life better for those who need us the most.
- **Underwriting the needs of our museums**  
Making sure our story is told to the generations who follow is one of the most important things we can do. Knowing the sacrifices made by Kappas before us helps us realize our gift to the future is the very least we can do.

- **Underwriting the educational and leadership training of our members**

Life-changing experiences bring about real change in society. We want our society to be a better place for those who follow. If we grow our leadership in all arenas, we will make a significant change in the world around us. The world will notice.

Receiving your generous donations is our joy. Then it becomes our goal to invest those gifts wisely. We then give back to our members. Your generosity becomes our generosity, and the lives of our sisters become blessed beyond measure. Thank you for your willing hearts. Stepping up to the challenge that is before us takes all of us. You make me so proud to be a Kappa.



Loyally,

*A Patsy Levang*

PATSY BREDWICK LEVANG  
*North Dakota State*  
Foundation President

## Make a Gift Online!

Donations are easy and secure via the Kappa Kappa Gamma Web site. Here's how:

1. Go to [www.kappa.org](http://www.kappa.org).
2. Look for the DONATE link in the upper right corner.
3. Follow the instructions.

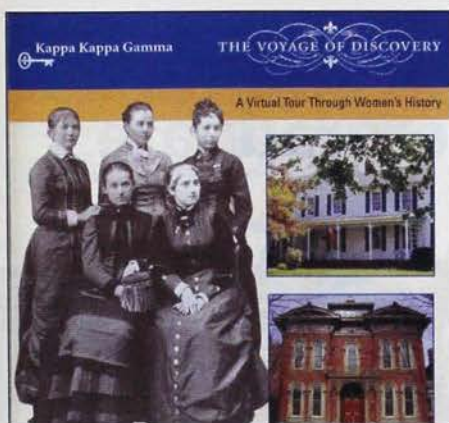
You will receive an acknowledgement letter from the Foundation office. This is a great way to make a gift to the Foundation in honor or in memory of a special friend or relative.



# Museums Add to Collections, Win Award

## The "Voyage of Discovery" Wins Prestigious Award

The College Fraternity Editors Association (CFEA) has honored Kappa Kappa Gamma with the First Place award for excellence in a multimedia program. The Foundation-funded "Voyage of Discovery" project is an interactive timeline of the path Kappa Kappa Gamma and women in North America have traveled in the past 130 years, highlighting events from 1870 to 2000. Also available are virtual tours of The Heritage Museum and The Stewart House of Kappa Kappa Gamma. The virtual tours can be viewed at [www.kappa.org](http://www.kappa.org) and are available on a CD-ROM distributed through Fraternity Headquarters.



## New Acquisition for The Heritage Museum

Heritage Museum Chairman DOROTHY ("D.A.") MCGINNIS KREINBIHL, *Ohio State*, and JENNIFER HOFFMAN, *Ohio Wesleyan*, current Catherine Schroeder Graf Intern, admire the exquisite epergne recently donated by MARY JANE JACKSON CRIST, *Arizona*.



## Sarasota Alumnae Association Aids in Parasol Donation

With the generous support and assistance of the SARASOTA ALUMNAE ASSOCIATION, ELSA NITZSCHE ZELLEY, *Pennsylvania*, recently donated 18 parasols from the 19th century, which include pieces that date as far back as the 1850s, as well as an exceptional Victorian dress that was made for and worn to a reception at the court of Queen Victoria. These items will be used for displays and programs at The Heritage Museum and The Stewart House.



ELSA NITZSCHE ZELLEY, *Pennsylvania*, with items from her collection.

## The Stewart House Committee Renovates Additional Rooms

The Stewart House Committee is pleased to announce the completion of its latest restoration efforts at The Stewart House in Monmouth, Illinois. Following the dedication of The JEAN HESS WELLS Memorial Charter Room on Founders Day in 2001, the committee's focus shifted to the living room and sun porch. New carpeting, window treatments and wall coverings have been installed in both rooms to restore them to their original Victorian splendor. The newly decorated rooms were showcased to nearly 100 visitors during Monmouth College's Alumni Weekend in June 2003. The activities of the weekend included a Monmouth Duo Celebration, with guests including ANN STAFFORD TRUESDELL, *Ohio Wesleyan*, and Sis Mullis, Pi Beta Phi Grand President.



Before and after at The Stewart House living room.



## Educational Grant Funds Kappa Trainers

A grant from the Kappa Kappa Gamma Foundation continues to fund the Kappa Trainers program, which provides leadership training and group development through specially designed workshops. Kappa trainer LINDA PRICE PATTON, *Oklahoma State*, taught speech and drama in the Nowata, Okla., schools for 28 years and also serves on the Advisory and House Boards for DELTA SIGMA CHAPTER, *Oklahoma State*. One chapter member wrote to the Foundation saying:

*"Thank you for funding the Kappa Trainer visit of Linda Patton to the DELTA EPSILON CHAPTER, Rollins. This is Linda's second visit and the chapter has really bonded with her. Her well-timed leadership training, 'If the Shoe Fits,' was perfect for the newly elected Chapter Council. Everyone enjoyed her visit and her training and wonderful attitude will greatly help the Chapter Council get off on the right foot. Also, the leadership training for the Advisory Board was a great benefit. Thank you for funding a visit by a fabulous trainer."*

During 2002-2003, 29 volunteer trainers conducted 79 visits to chapters and alumnae associations, impacting more than 2,800 members of Kappa Kappa Gamma. More than 60 visits have been requested to date for 2003-2004, with additional requests being processed. For more information, contact the Department of Education and Training at Fraternity Headquarters, 614/228-6515, ext. 155 or visit [www.kappa.org](http://www.kappa.org).

LINDA PRICE PATTON,  
*Oklahoma State*



## Houston Kappas Raise Thousands for Community and Undergraduate Rose McGill Aid

The Kappa Kappa Gamma Charitable Foundation of Houston hosted a luncheon in April 2003 to present \$285,000 in grants to Houston community organizations as well as to the Kappa Kappa Gamma Foundation. These grants were made possible by the successful Houston Holiday Pilgrimage. Under the leadership of co-chairmen BEVERLY CUNNINGHAM SHAEFFER, *Texas* and LYNN PAINTER WEST, *Texas*, this holiday tradition in Houston surpassed its goal, making increased donations possible.

Held every two years, hundreds of Houston area alumnae contribute time and financial support to create a phenomenally successful philanthropic event. The generous grant to the Kappa Kappa Gamma Foundation will go toward confidential aid to undergraduates through the Rose McGill financial aid programs.



ANN TEMPLE McDANIEL, *Kentucky*; ROBIN BOWLUS, former Foundation Director of Development; CECILE CARAMEROS SHANNON, *Oklahoma*; DOROTHY ENDICOTT O'SHEA, *Oklahoma*; and MIMI BASS LANGDON, *Texas*.



# Scholarship Recipients Thank You!

Since 1902, scholarships have been an important philanthropy for Kappa Kappa Gamma. These letters represent some of the 146 recipients for 2003-2004, who received a combined total of \$405,000 in aid for undergraduate and graduate education.

*"Thank you so much for the wonderful scholarship . . . . I am very appreciative of your generosity. This scholarship will help enormously; the deep hole of loans seems to get bigger and bigger every semester. With this money, I am able to cancel out an entire loan I was going to have to take out for next school year . . . . I am very proud to be a Kappa Kappa Gamma member; what a wonderful organization!"*

*"... I am honored to have received the Barbara Curley Memorial Scholarship. This generous scholarship will help me greatly with my college expenses. I will soon be a senior at Oklahoma State University, majoring in nutritional science and hope to one day be a pediatric dietician. I am currently the New Member Chairman for my chapter and I am so excited to be able to teach the new members all about Kappa and what it means to me. I have truly had a wonderful experience in the Kappa house and I thank you again for your great generosity."*

*"I just wanted to personally thank you for awarding me a Graduate Scholarship for 2003-2004. I am beginning medical school at the Ohio State University College of Medicine and Public Health in August, and this scholarship will be extremely helpful in covering my many educational expenses . . . ."*

*"I am looking forward to being involved in Kappa alumnae associations and having the opportunity to give back to Kappa everything that the Fraternity has given to me. I hope that in the future I can contribute monetarily to the educational goals of another Kappa. Thank you again!"*



Foundation scholarships help our Kappa sisters.

## News to Note!

### Paid Museum Internship at Headquarters

**Gain 12 weeks of work experience** at The Heritage Museum of Kappa Kappa Gamma in Columbus, Ohio, for the summer of 2004!

#### Internship includes:

- A stipend of \$7.50 an hour for 12 weeks
- Up to \$500 tuition reimbursement if college course credit will be sought
- A housing allowance
- A trip to Kappa Kappa Gamma's General Convention in Kansas City, Mo.

Please contact Kappa Kappa Gamma Fraternity Headquarters with questions or to request an application. Kappas of all ages and backgrounds are encouraged to apply. **Applications must be postmarked by February 1, 2004.**

### Financial Assistance Reminder

- Applications for scholarships are due **February 1, 2004.**
- Rose McGill financial aid applications are accepted year-round and are based on the needs of the individual and the available aid funds.
- Contact the Foundation for applications or visit [www.kappa.org](http://www.kappa.org).
- Alumnae Association and Chapter Presidents also have received applications.

### Contact Information:

Kappa Kappa Gamma Foundation  
P.O. Box 38  
Columbus, OH 43216-0038  
866/KKG-1870  
[www.kappa.org](http://www.kappa.org)



EDITOR'S NOTE: We are delighted to receive your letters but regret that we are unable to print each one. Please keep writing to *The Key* and know that we appreciate your input. Letters are edited for clarity and length.

## Good Advice

The best piece of advice I've read in a long time is in the article by Director of Membership MARTHA ALLEN KUMLER, *Ohio State*, on Page 20 of the Summer 2003 issue where she states: "Be the leader who never uses outdated terminology or says, 'The way we did it...' unless asked."

I believe this advice is sound and should be routinely practiced. One generation follows another and members of the next generation want to do things their way. Talking about "the way we used to do it" tends to put a wedge between generations.

— NANCY REYNOLDS PAPET, *West Virginia*

## Reunion Notes

I recently attended my 20th reunion at Allegheny College and was privileged to share the event with the 50th-anniversary pledge class at GAMMA RHO CHAPTER where 11 out of the 13 pledges from the class of 1953 gathered to celebrate. It was a truly special event honoring these remarkable women and their friendship was an inspiration to those of us who have a few years before we reach that milestone.

While at the reunion, I had the great pleasure to reconnect with my friend, VICKI LIPNIC, *Allegheny*, who is the Assistant Secretary of Labor of the United States. She has had an interesting career in politics and government and I would love to see her featured in an upcoming issue. Her experiences would be an inspiration to the active members and all readers would find her story compelling.

— MARY BETH HAYES DI BACCO, *Allegheny*

EDITOR'S NOTE: You — our readers — are *The Key's* best source of profile leads! Information for potential articles may be submitted to *The Key*, P.O. Box 38, Columbus, OH 43216 or [jhoover@kappakappagamma.org](mailto:jhoover@kappakappagamma.org). Please include complete name and contact information along with details of the member's area of expertise and accomplishments. If you wish to write and submit the entire article, byline credit will be considered. Clear, high-quality, color photographs are required. Actual photos are preferred over digital. (Digital must be 300 DPI and 100 percent.) The Editorial Board works six to 12 months in advance so story leads may not result in immediate publication. For additional guidelines, visit [www.kappa.org](http://www.kappa.org).

## Sisterhood Revealed

Thank you for the nice article about me in the Spring 2003 "Accent on Alumnae" section. I did not realize how

many people read *The Key* and, in fact, how many women are Kappas! It turns out two of my co-workers are Kappas — a bond we had not realized until they read the article.

— REBECCA CASEY REED, *Kentucky*

## Super Summer Issue

What a wonderful Summer 2003 issue! Besides the great recipes and super article on Middle East expert ROBIN WRIGHT, *Michigan*, and other notable Kappas, you gave us insight into today, tomorrow and even the past.

I read of "Quinoa" years ago, but until now had hesitated using it for anything but cereal or bread — many thanks to MARJORIE LORIG LEVENTRY, *Cornell*!

— GERALDINE RASMUSSEN, *Miami*

## Foundation Giving Report Is Appreciated

Having received *The Key* for 50 years, I wish to compliment you on presenting such an interesting magazine. I was particularly delighted with the Winter 2002 issue in which you reported all of the people who had contributed to the Kappa Kappa Gamma Foundation. The envelope within the magazine was particularly helpful in adding money to the Foundation. One of my ETA CHAPTER, *Wisconsin*, sisters died — DEBORAH SHERMAN GRAHAM — and we were able to collect money in her name and forward it to Kappa. From the list in the winter issue we knew that this was an organization close to her heart.

Wishing you success in bringing this interesting magazine into our homes.

— WINOGENE (WINNIE) WEIZ KILE, *Wisconsin*

## Reunion/Special Event Ads Are Now Available

*The Key* is offering alumnae associations and chapters the opportunity to publicize reunions and special events at a reduced rate. The cost of each announcement is \$50. Approximately 35 words will be accepted. To place an announcement or a regular classified ad, please contact ALLISON GREINER, *Ohio State*, Assistant to the Editor, at 866/KKG-1870 or [agrenier@kappakappagamma.org](mailto:agrenier@kappakappagamma.org). Announcements and ads are subject to space availability.



Fraternity News continued ...

## Kappa Receives Two CFEA Awards

Kappa Kappa Gamma was honored twice in May 2003 by the College Fraternity Editor's Association annual publication awards program. *The Key* earned a certificate of merit for "publication improvement" in recognition of its recent redesign. The Kappa Kappa Gamma Foundation won First Place in the "multimedia presentation" category for the Voyage of Discovery presentation available on CD or at [www.kappa.org](http://www.kappa.org).

## Plan Now for Alcohol Awareness Week

National Collegiate Alcohol Awareness Week is October 20-26, 2003. This is the largest single event in all of college circles and the students are in charge of implementing programs on their campuses. The goal of this week is to highlight healthy lifestyles free from alcohol and drugs and to fight negative stereotypes of college students.

NCAAW started in 1983 and is celebrating its 20th anniversary. Today, there are more than 3,000 colleges and universities in North America jointly recognizing the importance of campus prevention efforts. This program is designed to help college administrators and students promote year-round alcohol and drug prevention. According to Dr. Edward Hammond NCAAW's chairman and president of Fort Hays State University in Kansas, "This isn't about alcohol, but attitude. We don't preach, we educate and we empower students to take responsibility for their own decisions and environment."

To learn more about National Alcohol Awareness Week, visit [www.iatf.org](http://www.iatf.org).

## The Organizer and Coach

### HAVE A DREAM?

Having trouble staying on track with details and the big picture? This Kappa alumna coaches individuals by phone nationwide. Get and stay organized. Make enthusiastic progress. Step by step you achieve your goals: A balanced life and real accomplishment. Experience, info., recommendations: 417/683-1064 or [www.organizercow.com](http://www.organizercow.com)  
DENSLOW BROWN, UCLA



Hand-Smocked Children's Clothing

Call for Catalogue or Home Show Rep  
888.856.3948



Orient Expressed  
3905 Magazine . New Orleans, LA 70115  
[www.orientexpressed.com](http://www.orientexpressed.com)

For classified ad information, contact ALLISON GREINER, Ohio State, at [agreiner@kappa.kappagamma.org](mailto:agreiner@kappa.kappagamma.org) or call 866/KKG-1870

## donovandesigns



donovandesigns, inc. offers unique stationery and gift products. In addition to our own designs, we carry other product lines! Check us out on the web at [www.donovandesignsinc.com](http://www.donovandesignsinc.com) or call 614-231-8363.

## a taste of Provence



Jaydee Boat, chair of *Colorado Cache Cookbook*, offers week long tours of Provence in the spring and fall. Explore the food, wine, art and history. Lodging is in country homes with pools.

For a color brochure please contact

*At Home in Provence, LLC*

telephone: (800) 680-8685

e-mail: [jdboat@ix.netcom.com](mailto:jdboat@ix.netcom.com)



# Who Was First?

— By KAY SMITH LARSON, Washington, Fraternity History Chairman



Early Kappas were initiated in the classrooms of this Monmouth College building, Old Main, before it burned down in 1907.

As Kappa Kappa Gamma's Founders Day — October 13 — approaches, Kappas may wonder which women's fraternity was the first. It's not an easy question to answer ... and here's why:

- The Adelphean Society was founded in May 1851 at Wesleyan Female College, Macon, Ga. It later became Alpha Delta Pi.
- The Philomathean Society was founded in July 1852 at Wesleyan Female College, Macon, Ga. The society's name was later changed to Phi Mu.
- I.C. Sorosis was founded in April 1867 at Monmouth College, Monmouth, Ill., and became Pi Beta Phi in 1888.
- Kappa Alpha Theta was founded at Indiana Asbury College, now DePauw University, Greencastle, Ind., in January 1870.
- Kappa Kappa Gamma was founded October 13, 1870, at Monmouth College, Monmouth, Ill.

When you look at the founding dates of the earliest women's societies, you can see why there has been confusion about which group was first.

Do we consider the early 1851-1867 societies who later changed their names to Greek letters the first women's fraternities? If so, Alpha Delta Pi founded as the Adelphean Society would be number one. If we don't consider the first three societies women's fraternities, Kappa Alpha Theta would be number one. It is the first Greek-letter fraternity for women.

Theta at once began to expand in response to the national idea already expressed in the growth of the men's fraternities and an effort was made to establish a chapter of this fraternity at Monmouth College, where a women's society called the I.C. Sorosis had been established.

Even though Theta and Kappa were founded in 1870, the Thetas appeared in January and the Kappas not until October when our six Founders walked into chapel at Monmouth College wearing little golden keys in their hair. Now, nearly 133 years later, our tradition of sisterhood and leadership continues to thrive.

Kappa Kappa Gamma was not the first women's fraternity, but it does have many firsts of which we can be proud.

- ❖ First of women's fraternities to turn from a "grand chapter" form of organization to "grand council" organization (1881)
- ❖ First of women's fraternities to publish a magazine (1882)
- ❖ First to extend invitations to a Panhellenic convention (1891)
- ❖ First women's fraternity to establish a foreign alumnae association (1892, Berlin)
- ❖ First women's fraternity to establish a central office (1922)
- ❖ First to adopt the graduate counselor system (Established as Co-Organizer Program, 1928. Presently the Chapter Consultant position)
- ❖ First to set up Service Women's Centers for women in military service (1942)
- ❖ First women's fraternity to establish a permanent headquarters (1952)
- ❖ Only women's fraternity to own a founder's home (Purchased in 1989 by ALPHA CHAPTER alumnae and other Kappas, merged into the Kappa Kappa Gamma Foundation, 2000)
- ❖ Only women's fraternity to own two house museums (Heritage Museum 1980, Stewart House Museum 2000)



EDITOR'S NOTE: For more about Kappa History, visit [www.kappa.org](http://www.kappa.org) and check out "A Voyage of Discovery."





e. 9 inch glass iris bouquet \$10.50; we'll add a message!



m. Quilted blue & blue messenger bag velcro closures, extra inside and outside pocket Our exclusive \$60

### 2003 limited edition ornament



a. 3-D gold plated iris wreath with blue enamel on both sides \$16.80 See other ornaments on our web site

d. 4" sq velvet pin pillow/ ornament \$8.25



ANORAK! Choose KKG bar design (s) or embroidered kappa (r) on navy with double blue or white stripe, solid navy, or single stripe in many colors \$49 Add school \$5



ff. 13" x 14" tote \$14  
gg. Pen \$1.60  
hh. Frame \$4.95  
jj. keyring \$4.25  
kk. thermal mug \$4.50



c.

10 inch square needlepoint pillow \$29.50

d. "In charge" 5" needlepoint doorknob pillow \$10.75

h. 12" memory book \$25  
j. ledger album holds 50 5x7 party pics with memo area \$7.75  
k. brass tipped album holds 25 5 x 7's \$6  
Scrapbooking accessories on line!

GROUP QUOTES: SAVE \$\$\$

[www.buykappa.com](http://www.buykappa.com)  
for closeouts, specials



ss. Shorts, navy or oxford \$12.50 S-XL other styles, on web



e. Blue/blue fleece blanket \$39 with KKG, add key or fleur \$5 add other lines +\$5

FLARE LEG SWEATPANTS ARE NEW & HOT! See website



n. ARCH KAPPA (right) hoody: \$56

select from ash oxford white navy



choose your color! KKG



cc.felt letter hoody junior sizes S-XL \$47.00



ice blue towel wrap \$26 add line \$5

### BEST JEWELRY PRICES! See sales on line.



	SS	10K	14K
mm.	\$ 14.95	\$30	\$43
oo	\$ 15	\$30	\$43
pp.	\$ 15	\$30	\$43
nn.	see web site for chains		

### Classics

u. Choose circle on: 50/50 sweatshirt \$29  
Sweatshirt hi cotton \$34  
Long sleeve tee \$24  
Short sleeve tee \$14  
Hooded sweatshirt \$42



### NEW BEACH TOWEL!



y. Towel regularly \$23. \$19 until November 1!

HOT PANTS!

MORE PATTERNS!  
HUGE LETTER SELECTION on line!

Prices and special sales subject to change or availability

800-441-3877  
**Key Source**  
[www.buykappa.com](http://www.buykappa.com)  
Kappa's only official merchandiser...  
your purchase helps KKG  
order on line, phone, or by mail

Shipping/handling up to \$25: \$5.95  
\$25.01-\$40: \$6.95  
\$40.01-\$65: \$7.95  
\$65.01-\$85: \$9.95  
\$100.01-\$125: \$10.25  
Over: Call for quote  
2 day & overnight shipping available, gift certificates, too

Buy flip flops AND towel & get a FREE flyer!  
exp 9/30/03  
V. translucent flyer \$2.50  
X flip flops size 5-11 \$19.95

**KAPPA KAPPA GAMMA WAY**  
NO PASSING  
Going my way? q. 4.5" x 23" street sign with two holes aluminum \$12.50  
VISA, M/C, DISCOVER, checks inquiries: 309 681 3877  
fax: 309 681 8964 Email: [keysources@ameritech.net](mailto:keysources@ameritech.net)  
1723 W. Detweiller Dr. Peoria, IL 61615

Have you moved? Changed your name, occupation or e-mail address?

Full Name: \_\_\_\_\_ Chapter: \_\_\_\_\_

Husband's Name: \_\_\_\_\_ Home Phone: \_\_\_\_\_

Address: \_\_\_\_\_

Occupation/Interests: \_\_\_\_\_ E-mail: \_\_\_\_\_

(Your occupation/interests will be added to the "Kappa Connection" database, which is only available to other Kappas.)

Send to Kappa Kappa Gamma Fraternity Headquarters, P.O. Box 308, Columbus, OH 43216-0308, [kkghq@kappa.org](mailto:kkghq@kappa.org), 866/KKG-1870.