

The Key

Official Organ of Kappa Kappa Gamma

Volume XXXVIII

OCTOBER, 1921

Number 3

Board of Editors

Editor-in-chief—Mrs. Howard B. Mullin . . 111 West 11th Street, New York City.
Editor's Deputy—Rosalie B. Geer . . 241 Washington Ave., Brooklyn, N. Y.
Alumnae Editor—Mrs. Frank A. Kemp, Jr. . . 135 Grant St., Denver, Colo.
Department Editor—Mrs. Everett Warner . . 508 E. Adams St., Muncie, Ind.
Exchange Editor—Eleanor Aldridge . . 331 Adelphi St., Brooklyn, N. Y.
College Notes and "Hoots"—Helen Bower 8047 Woodward Ave., Detroit, Mich
Business Manager—Mrs. Parke R. Kolbe . 250 East Buchtel Ave., Akron, Ohio.

CONTENTS

Phi Beta Kappas.....	167
Minutes of Council Session.....	168
New Songbook Coming..... <i>Carolyn McGowan</i>	204
What Xmas Cards Did..... <i>Marguerite Fischbacher</i>	207
New Chapter Greets You..... <i>Katherine Atwood</i>	211
Another Plea from France..... <i>Dorothy Davy Gross</i>	213
Our Kappa Relatives.....	215
Frank A. Kemp, III.....	216
Kappas Known to Fame..... <i>Lalah Randle Warner</i>	217
Kappas in Book and Magazine..... <i>Lalah Randle Warner</i>	223
Editorial Comment.....	225
Kappa Kristmas Kards..... <i>E. K. K.</i>	227
Hoots..... <i>Helen Bower</i>	229
The Alumnae..... <i>Estelle Kyle Kemp</i>	232
College News..... <i>Helen Bower</i>	250
Rules for KEY Correspondents.....	252
Chapter Letters	253
In Memoriam.....	274

Entered as second-class matter November 3, 1910, at the postoffice at Menasha, Wis., under the act of March 3, 1879.

Acceptance for mailing at special rate of postage provided for in section 1103, Act of October 3, 1917, authorized July 31, 1918.

Subscription price, one dollar per year.

Published four times a year in February, April, October, and December, by George Banta, Official Printer of Kappa Kappa Gamma, 450-454 Ahnaip Street, Menasha, Wisconsin.

Material intended for publication must reach the editor before the first of January, March, September, and November.

FRATERNITY DIRECTORY

GRAND COUNCIL

Grand President—SARAH B. HARRIS, 150 South Grand Ave., Pasadena, Cal.
Grand Vice-president—MRS. FRANK A. KEMP, JR., 135 Grant St., Denver, Colo.
Grand Secretary—DELLA LAWRENCE, 3710 27th St., Bryan, Tex.
Grand Treasurer—GERTRUDE KING WOOD, 814 Second Pl., Plainfield, N. J.
Grand Registrar—CATHARINE BURNSIDE, 630 East 17th St. North, Portland, Ore.
Editor of THE KEY—MRS. HOWARD B. MULLIN, 111 W. 11th St., New York, N. Y.

CHAIRMEN

Historian—MRS. A. H. ROTH, 629 Myrtle St., Erie, Pa.
Chairman Student Aid Fund—MRS. RICHARD H. GODDARD, 401 E. 11th Ave., Denver, Colo.
Custodian of the Badge—MRS. THEODORE WESTERMANN, 31 Kraft Ave., Bronxville, N. Y.
Chairman Committee on Scholastic Standing—MRS. CHARLES WILLIAM LEAPHART, Missoula, Mont.
Custodian of Songbook—CAROLYN MCGOWAN, 3258 Observatory Rd., Cincinnati, Ohio.

DEPUTIES

Grand President's Deputy—MRS. JAMES SHEDDEN, 1309 Farwell Ave., Chicago, Ill.
Grand Vice-president's Deputy—ALICE BURROWS, 1266 Clayton St., Denver, Colo.
Grand Secretary's Deputy—FRANCES VAN ZANDT, 662 Henderson St., Fort Worth, Tex.
Grand Treasurer's Deputy—FANNY CHEYNEY, 2 Harold St., Plainfield, N. J.
Grand Registrar's Deputy—JEAN MCLEOD, 660 Siskiyou St., Portland, Ore.
Editor's Deputy—ROSALIE B. GEER, 241 Washington Ave., Brooklyn, N. Y.

CORRESPONDING SECRETARIES

For time and place of meetings of chapters or alumnae associations, write to the secretaries.

ALPHA PROVINCE

President—EVELYN JENKINS, Devereaux Mansion, Marblehead, Mass.
BOSTON (Phi), Dorothea Fall, 551 Boylston St., Boston, Mass.
ADELPHI COLLEGE (Beta Sigma), Olive Holmes, 82 Lafayette Ave., Brooklyn, N. Y.
PENNSYLVANIA (Beta Alpha), Alice Rumpp, 3433 Walnut St., Philadelphia, Pa.
SWARTHMORE (Beta Iota), Isabelle S. Fussell, Box 227, Swarthmore College, Swarthmore, Pa.

BETA PROVINCE

President—GERTRUDE THILLY, 9 East Ave., Ithaca, N. Y.
CORNELL (Psi), Mary L. Butler, 228 Wait Ave., Ithaca, N. Y.
SYRACUSE (Beta Tau), Elizabeth Blanchard, 907 Walnut Ave., Syracuse, N. Y.
ST. LAWRENCE (Beta Beta), Mary E. Gunnison, Kappa Lodge, Canton, N. Y.
TORONTO (Beta Psi), Mildred V. L. Taylor, South Hall, 75 Queen's Park, Toronto, Canada.

GAMMA PROVINCE

President—MRS. SHERMAN CONRAD, 343 Bryant Ave., Cincinnati, Ohio.
ALLEGHENY (Gamma Rho), Mildred Stoner, Hulings Hall, Meadville, Pa.
PITTSBURGH (Gamma Epsilon), Phyllis L. Newlands, 1563 Clark St., Wilksburg, Pa.
WEST VIRGINIA (Beta Upsilon), Margaret V. Reay, 230 Kirk St., Morgantown, W. Va.
MUNICIPAL UNIVERSITY OF AKRON (Lambda), Aline Blackburn, Box 213, Akron, Ohio.
OHIO STATE (Beta Nu), Margaret A. Carter, 40 Chittenden Ave., Columbus, Ohio.
CINCINNATI (Beta Rho), Helen Guhman, 148 Woolper Ave., Cincinnati, Ohio.

DELTA PROVINCE

President—MRS. WILL LOUDIN, 519 N. Walnut St., Bloomington, Ind.
DE PAUW (Iota), Naomi Gum, Kappa House, Corner of Indiana and Poplar Streets, Greencastle, Ind.
BUTLER (Mu), Louise Clark, 2103 Broadway, Indianapolis, Ind.
INDIANA STATE (Delta), Helen O'Neill, Kappa House, Bloomington, Ind.
KENTUCKY (Beta Chi), Henrietta Rogers, 219 S. Limestone St., Lexington, Ky.
PURDUE (Gamma Delta), Bernice L. Louman, K K F House, W. Lafayette, Ind.

EPSILON PROVINCE

President—MARION ACKLEY, 220 Blaine Ave., Detroit, Mich.
MICHIGAN (Beta Delta), Joyce McCandy, Newberry Residence, Ann Arbor, Mich.
AKRON, Alene Blackburn, Box 213, Akron, Ohio.
HILLSDALE (Kappa), Wilhelmina Robinson, 200 Hillsdale St., Hillsdale, Mich.

ZETA PROVINCE

President—MRS. HART ANDERSON, Minneapolis, Minn.
MINNESOTA (Chi), Charlotte Keyes, 329 Tenth Ave. S. E., Minneapolis, Minn.
WISCONSIN (Eta), Harriet Bridgway, 425 N. Park St., Madison, Wis.
NORTHWESTERN (Upsilon), Margaret George, Willard House, Evanston, Ill.
ILLINOIS WESLEYAN (Epsilon), Helen Niehaus, Kappa Hall, Ill. Wes. Univ., Bloomington, Ill.
ILLINOIS (Beta Lambda), Meryle Pratt, 212 Chalmers St., Champaign, Ill.

ETA PROVINCE

President—MRS. AMES ROGERS, Abilene, Kan.
IOWA (Beta Zeta), Maurine A. Yaggy, Kappa House, Iowa City, Iowa.
KANSAS STATE AGRICULTURAL COLLEGE (Gamma Alpha), Gretchen Rugh, 311 N. 14th St., Manhattan, Kan.
NEBRASKA (Sigma), Dorothy Lyon, 312 N. 14th St., Lincoln, Neb.
KANSAS STATE UNIVERSITY (Omega), Virginia Schwinn, 1602 Louisiana St., Lawrence, Kan.
COLORADO (Beta Mu), Elizabeth N. Partridge, 1221 University Ave., Boulder, Colo.
ARIZONA (Gamma Zeta), Lois Wendel, 636 N. Park Ave., Tucson, Ariz.
DRAKE, Florence Blount, 1073 37th St., Des Moines, Iowa.
NEW MEXICO (Gamma Beta), Loraine Cleaveland, University of New Mexico, Albuquerque, N. M.

THETA PROVINCE

President—RUTH KLINGLESMTIH, Chickasha, Okla.
MISSOURI (Theta), Margaret Baxter, 600 Rollins St., Columbia, Mo.
OKLAHOMA STATE (Beta Theta), Frances Burckhalter, Kappa House, Norman, Okla.
TEXAS STATE (Beta Xi), Elizabeth Baker, 27th and Nueces Sts., Austin, Texas.
TULANE (Beta Omicron), Nell Kearney, Newcomb College, New Orleans, La.
WASHINGTON (Gamma Iota), Washington University, St. Louis, Mo.

IOTA PROVINCE

President—LESETTA LUBKIN, Boise, Idaho.
MONTANA (Beta Phi), Margaret Rutherford, 400 Connell Ave., Missoula, Mont.
WASHINGTON (Beta Pi), Helen Thompson, 4504 18th Ave. N. E., Seattle, Wash.
OREGON (Beta Omega), Eleanor E. Spall, 754 13th Ave. E., Eugene, Ore.
IDAHO (Beta Kappa), Gladys Hastie, Kappa Kappa Gamma House, Moscow, Idaho.
WHITMAN (Gamma Gamma), Sidonie Pyle, 305 Melrose St., Walla Walla, Wash.
WASHINGTON STATE COLLEGE (Gamma Eta), Esther H. Keith, 614 Campus Ave., Pullman, Wash.

KAPPA PROVINCE

President—MRS. A. C. WHITAKER, Stanford University, Cal.
CALIFORNIA (Pi), Frances Parkinson, 2725 Channing Way, Berkeley, Cal.
STANFORD (Beta Eta), Phyllis Heath, Box 1354, Stanford University, California.

Kappa Kappa Gamma Panhellenic Delegate—SARAH B. HARRIS, Northwestern University School of Speech, Evanston, Ill.
Chairman of the National Panhellenic Congress—MRS. ETHEL HAYWARD WESTON (Sigma Kappa), 20 Prospect Ave., Rumford, Maine.

ALUMNAE ASSOCIATIONS

ALPHA PROVINCE

Vice-president—MRS. MILDRED DOWNEY WING, Dongan Hills, Staten Island, N. Y.
Boston Association—Genevieve Elder, 51 Ashland St., Medford, Mass.
New York Association—Frances Hall, 101 Jewett Ave., Jersey City, N. J.
Philadelphia Association—Florence Pumyea, Mt. Holly, N. J.
Beta Iota Association—Mrs. George L. Corse, Swarthmore, Pa.
Beta Sigma Club—Ines Pando, 676 6th St., Brooklyn, N. Y.

BETA PROVINCE

Vice-president—MAY GLADYS BURNS, 486 Jarvis St., Toronto, Ont., Canada.
Syracuse Association—Florence R. Knapp, 410 Westcott St., Syracuse, N. Y.
Western New York Association—Mrs. Henry J. Schiefer, Jr., 465 Harvard St., Rochester, N. Y.
St. Lawrence Association—Miss Louise Reynolds, Canton, N. Y.
Toronto Club—May Gladys Burns, 486 Jarvis, Toronto, Ontario, Canada.

GAMMA PROVINCE

Vice-president—CAROLINE MCGOWAN, 3258 Observatory Road, Cincinnati, Ohio.
Columbus Association—Miss Clara Pierce, 909 Franklin Ave., Columbus, Ohio.
Cincinnati Association—Mrs. J. W. McGarry, 3271 Montana Ave., Westwood, Cincinnati, Ohio.

Cleveland Association—Mrs. John A. Williams, 1619 East 86th St., Cleveland, Ohio.
Pittsburg Association—Louise Pennywith, 7045 Willard St., Pittsburg, Pa.
Morgantown, W. Va., Association—Beulah Posten, Forest Ave., Morgantown, W. Va.
Akron Association—Mrs. Robert Wilson, 733 Wooster Ave., Akron, Ohio.
Lambda Club (Akron)—Mrs. Robert Wilson, 733 Wooster Ave., Akron, Ohio.
Beta Gamma Club—Florence McClure, Larwell St., Wooster, Ohio.
Toledo Association—Mrs. F. E. Duddy, 2538 Maplewood Ave., Toledo, Ohio.

DELTA PROVINCE

Vice-president—Edith Hendren, 3032 N. Illinois St., Indianapolis, Ind.
Franklin Nu Association—Mrs. F. W. Erther, 846 W. 30th St., Indianapolis, Ind.
Indianapolis Association—Mrs. Charles R. Jones, 228 E. 13th St., Indianapolis, Ind.
Bloomington, Indiana, Association—Mrs. Alice A. Cosler, Bloomington, Ind.
South Bend Association—Mrs. Elizabeth G. Seebirt, 634 N. Lafayette Blvd., South Bend, Ind.
Iota Club—Mrs. Helen O. Sigmund, Crawfordsville, Ind.
Falls City Club—Miss Helen Horine, 1522 Edgewood Pl., Louisville, Ky.
Mu Club—Elsie R. Felt, 64 N. Irvington Ave., Indianapolis, Ind.
Lafayette Association—Juanita M. Follett, 214 Lutz Ave., W. Lafayette, Ind.
Muncie Association—Ruth Elizabeth Chaney, Muncie, Ind.
Bluffton Club—Stella V. Patton, 324 W. South St., Bluffton, Ind.
Lexington Association—Fan Ratcliffe, Rodes Addition, S. Limestone St., Lexington, Ky.

EPSILON PROVINCE

Vice-president—DELILA JUDD, 381 Webb Ave., Detroit, Mich.
Adrian Club—Marjorie Conlin, Adrian, Mich.
Detroit Association—Helen Bower, 8047 Woodward Ave., Detroit, Mich.
Hillsdale Association—Ilda Bosworth, High School, Hillsdale, Mich.

ZETA PROVINCE

Vice-president—LUCIA NEIBERGER, 920 Broadway, Normal, Ill.
Chicago Association—Mrs. Hazel McCready, 6127 S. Park Ave., Chicago, Ill.
North Shore Association—Kathryn Goss, 905 Forest Ave., Evanston, Ill.
Champaign-Urbana Association—Jane Craig, Champaign, Ill.
Madison Association—Mrs. A. E. Harris, Madison, Wis.
Milwaukee Association—Mrs. Lester Slocum, 781 Summit Ave., Milwaukee, Wis.
Bloomington, Ill., Association—Mrs. Charlotte L. Probasso, 907 N. Main St., Bloomington, Ill.
Minnesota Club—Josephine Allen, 2721 Humboldt Ave., Minneapolis, Minn.

ETA PROVINCE

Vice-president—VIVIAN HERRON, 1353 Mulvane St., Topeka, Kansas.
St. Louis Association—Mrs. Robert Johnston, 4107 Washington Blvd., St. Louis, Mo.
Kansas City Association—Mrs. Charles Munger, 5600 Michigan, Kansas City, Mo.
Denver Association—Mrs. Ernest Rhoads, 1201 S. York St., Denver, Colo.
Cedar Rapids Association—Mrs. Mary Van Cushman, 1853 3rd Ave. East, Cedar Rapids, Iowa.
Iowa City Club—Mrs. W. O. Coast, 1112 Church St., Iowa City, Iowa.
Tri City Club—Ethel McKown, 2424 Brady St., Davenport, Iowa.
Lincoln Association—Mrs. W. B. Romans, 2116 St. Mary's Ave., Lincoln, Neb.
Lawrence Association—Alice M. Guenther, 641 Ohio St., Lawrence, Kan.
Omaha Association—Mrs. Walter Klopp, 5102 Capitol Ave., Omaha, Neb.
Manhattan Association—Mrs. Naudia D. Corby, 739 Leavenworth St., Manhattan, Kan.
St. Joseph Club—Dorothy Vaut, 602 N. 25th St., St. Joseph, Mo.
Topeka Club—Leahbelle Duff, 1200 Tyler St., Topeka, Kan.
Des Moines Association—Mrs. J. W. Cokenower, 1002 Forest Ave., Des Moines, Iowa.
Hutchinson Club—Beulah Davis, 1005 North Adams St., Hutchinson, Kan.
Albuquerque Association—Mrs. Jerre Howard, 508 N. 4th St., Albuquerque, N. M.

THETA PROVINCE

Vice-president—MARGARET MCLEOD, 1905 State St., New Orleans, La.
Dallas Association—Mrs. W. A. Dealey, 3524 Dickson Ave., Dallas, Texas.
Newcomb Club—Mrs. John Pratt, 1230 State St., New Orleans, La.
Austin Association—Mrs. Gillespie Stacy, 1007 Harwood Place, Austin, Texas.
Oklahoma Association—Marian Craddock, Box 96, McLoud, Okla.
Tulsa Club—Blanche Mullen, 1207 Baltimore, Tulsa, Okla.

IOTA PROVINCE

Vice-president—EVA COFFEE, 101 South 5th St., West Missoula, Mont.
Boise Association—Mrs. Hal E. Cornell, 1403 Warm Springs, Boise, Idaho.
Montana Association—Mrs. Harold Lansing, 416 Univ. Apts., Missoula, Mont.
Washington Association—Julia Fisher, 1203 E. Lynn, Seattle, Wash.
Tacoma Association—Elizabeth Allen, 402 N. K St., Tacoma, Wash.
Portland Association—Hazel Young, 349 E. 20th St., Portland, Ore.
Walla Walla Association—Madeline Gilcrest, Whitman College, Walla Walla, Wash.

KAPPA PROVINCE

Vice-president—ELEANOR BENNETT, 2904 Piedmont Ave., Berkeley, Cal.
Los Angeles Association—Mrs. F. S. Murray, 468 S. Lake St., Los Angeles, Cal.
Pi Association—Virginia Gohn, 701 Grand St., Alameda, Cal.
Beta Eta Association—Mrs. Gloucester Willis, 2550 Gough St., San Francisco, Cal.

THREE OF OUR TWENTY-SEVEN PHI BETA KAPPAS



Helen Mather, Beta Xi



Janet Young, Beta Iota



Dorothy J. Lyons, Phi

THE KEY

VOLUME XXXVIII

OCTOBER, 1921

NUMBER 3

PHI BETA KAPPAS

Phi—Dorothy Lyons.

Beta Iota—Janet Young.

Beta Tau—Two seniors (names not given in chapter report).

Beta Beta—Hazel Northrop, Dorothy DeGraff, Amelia Wood.

Beta Upsilon—Margaret Moore, Anagrace Cochran.

Iota—Grace Ruthenberg, Mary Fraley, Mary Frances Grose.

Beta Delta—Maud Hinchman.

Eta—Helen Dick, Annie Lee Duncan.

Theta—Mary Chorn, Frances Ross, Pemala Shackleford.

Beta Xi—Helen Mather.

Beta Omicron—Ione Brady.

Beta Pi—Arynes Joy.

Gamma Gamma—Lulu Holmes, Katherine Sickles.

Psi—Margaret Thilly, Helen Bateman, Irene Heble.

Sigma—Josephine Strode.

MINUTES OF COUNCIL SESSION

BROWN PALACE HOTEL, DENVER, COLO., AUG. 1-5, 1921

AUGUST 1, 1921

Council Session of Kappa Kappa Gamma was called to order by the Grand President at ten A. M. Monday, August 1, 1921, at the Brown Palace Hotel, Denver, Colo.

Roll call was answered by the Grand President, Grand Vice-president, Grand Treasurer, Grand Registrar, Editor, and Grand Secretary.

M. and S. that the minutes of the previous Council Session be dispensed with inasmuch as they had been printed in the Grand President's report and had been read by the members of the Council. Carried.

M. S. and C. to accept the following program as prepared by the Grand President for Council Session:

Monday, Aug. 1.

10 A. M.

Call to order.

Preliminary business—roll call, minutes, etc.

Adoption of program for Council Session.

Appointments.

Instructions to committees.

Grand Council officers' reports, except the Grand Vice-president's.

2:00 P. M.

Committee meetings.

Tuesday, Aug. 2.

9:30 A. M.

Roll call.

Reading of minutes.

Grand Council officers' reports continued.

2 P. M.

Committee meetings.

Wednesday, Aug. 3.

9:30 A. M. Alumnae session (conducted by Grand Vice-president).

Roll call.

Reading of minutes.

Report of Grand Vice-president, which is to include report on relief work in France.

Reports of province vice-presidents.

Report of committee on alumnae.

2 P. M.

Reports of standing committees.

Reports of province presidents.

Chapter reports.

Grand Council reports on chapter visiting.

Discussion of chapter visiting to be done during 1921-22 by Grand Council and province officers.

Thursday, Aug. 4.

9:30 A. M.

Roll call.

Reading of minutes.

Reports of Council Session committees.

2:00 P. M.

Reports of committees continued.

Friday, Aug. 5.

9:30 A. M.

Roll call.

Reading of minutes.

Reports of committees continued.

New business.

2:00 P. M.

New business continued.

Old business.

Appointments.

Reading of minutes of the day.

Adjournment.

The Grand President appointed the following Council Session committees:

Convention—Grand President, Grand Registrar.

Finance—Grand Treasurer, Grand President.

KEY Policy—Editor, Grand Vice-president.

Extension—Grand Secretary, Grand Registrar.

Scholarship—Grand Secretary, Grand President.

Panhellenic—Grand Registrar, Editor.

Recommendations—Editor, Grand Secretary.

Alumnae—Grand Vice-president, Grand Treasurer.

Constitution and Standing Rules—Grand Secretary, Grand Vice-president.

Ritual—Grand Registrar, Grand President.

Auditing—Grand Vice-president, Editor.

Resolutions—Grand Treasurer, Grand Secretary.

The Grand President appointed the Grand Registrar as Assistant Secretary and the Grand Treasurer as Sergeant-at-Arms.

The Editor of THE KEY gave her report.

It was voted that thanks be given the Editor for the splendid work on THE KEY for the past year—especially on the October number.

The Grand President, Registrar, Treasurer and Secretary gave their reports, which were accepted.

An invitation to lunch with Mrs. Charlotte Powell Goddard on Aug. 2 was accepted.

An invitation to lunch with the Denver Alumnae Association and the members of Beta Mu chapter at the Savoy Hotel for Thursday, Aug. 4, was accepted.

Mrs. Dwight Green of Chicago, who was passing through Denver, brought greetings to the Council in session.

Meeting adjourned.

AUGUST 2, 1921.

Call to order 9:30 A. M.

The minutes for the previous meeting were read and approved.

The Editor reported on visits to Beta Psi, and Beta Tau.

The Grand Vice-president reported on visits to Beta Zeta, and Beta Mu.

The Grand Registrar reported on visits to Beta Pi, Beta Omega, Beta Kappa, Gamma Eta, Gamma Gamma.

Meeting adjourned to hold committee meetings.

AUGUST 3, 1921.

Call to order 9:00 A. M.

Roll call was answered by all members of the Council.

The minutes for the previous meeting were read and approved.

Discussion of the present geographic organization of provinces.

The Grand President appointed the Grand Secretary as chairman of a committee on geographical reorganization of provinces—the Grand Registrar and Grand Treasurer to act as members of this committee.

Continuation of the reports of chapter visits.

The Grand Secretary reported on visits to Mu, Iota, Delta, Gamma Delta, Beta Nu, Gamma Epsilon, Beta Upsilon, Beta Theta.

The Grand President reported on visits to Delta, Epsilon, Eta, and Pi.

The Grand Vice-president took the chair.

The Grand Vice-president gave her report.

The Grand Vice-president gave her report of the Bellevue-Meudon Fund.

The Grand Vice-president gave the reports of the province vice-presidents.

The Grand Vice-president gave the report of the committee on alumnae.

Meeting adjourned until 2:00 P. M.

The meeting was called to order by the Grand President at 2:00 P. M.

Reports of standing committees.

Mrs. Charlotte Powell Goddard gave her report as Chairman of the Student Aid Fund. Moved and seconded that the recommendations of the Chairman of the Student Aid Fund in regard to two loans overdue be followed.

The Grand Secretary read the reports of the Historian, Custodian of the Badge, Chairman of the Songbook Committee. The Grand Treasurer read the report of the Business Manager of THE KEY.

The reports of Province Presidents were read.

Discussion of the reports of Province Presidents.

Adjournment.

AUGUST 4, 1921.

Call to order 9:00 A. M.

Roll call was answered by all members of the Council.

The minutes for the previous meeting were read and approved.

Reports of Province Presidents continued.

Completion of chapter visit assignments for year 1921-22.

Reports of Council Session Committees.

The report of THE KEY Policy Committee was given by the Editor.

The Grand Secretary gave the report of the Scholarship Committee.

The Grand Registrar gave the report of the Panhellenic Committee.

The Grand Registrar gave the report of the Ritual Committee.

The Grand Vice-president gave the report of the Auditing Committee.

Meeting adjourned to hold a conference with the General Passenger Agent of the Great Northern Railroad in regard to Convention rates for 1922.

The meeting was again called to order at 2:30 P. M.

Report of the Convention Committee.

Decided to hold the 1922 Convention in Glacier National Park with Beta Phi chapter as hostess.

That the incoming and outgoing Councils hold a one day session after the 1922 Convention. Motion made, seconded and carried.

Moved and seconded that the first letter of the Grand President to chapters emphasize the fact that chapters must keep the number in their active chapters within the constitutional limit. Carried.

Discussion of the custom of having patronesses of chapters. (See Report of Committee on Recommendations to Chapters).

Moved and seconded that the petition asking for the initiation of certain alumnae members of Epsilon Tau Sigma of Drake University, the local that has become Gamma Theta chapter of Kappa Kappa Gamma, be refused because most of the members listed are not eligible for initiation according to our constitution. Carried.

Moved and seconded that the Grand Secretary write a letter to the Universal Records Corporation telling them that we are in no way interested in their proposition to perpetuate Kappa songs. Carried.

Adjournment.

AUGUST 5, 1921.

Call to order at 9:00 A. M.

Roll call was answered by all members of the Council.

The minutes for the previous meeting were read and approved.

The report of the Finance Committee was given by the Grand Treasurer.

The report of the Extension Committee was given by the Grand Secretary.

The report of the Committee on Recommendations to Chapters was given by the Editor.

The Grand President appointed the Editor chairman of the committee to codify and simplify the Constitution.

The Report of the Committee on Constitution and Standing Rules was given by the Grand Secretary.

The report of the Committee on Resolutions was given by the Grand Treasurer.

Moved and seconded that Kappa Kappa Gamma have a National House Committee and that the Chairman of this Committee be the Grand Treasurer—the duties of this committee to be to investigate present methods of chapters in raising money to build fraternity houses and to communicate with any chapters desirous of obtaining information upon such a subject. Carried.

Appointment of Province Officers as follows—See KEY Directory.

Discussion of the possibility of having one officer of the fraternity be a paid officer and have her in charge of all detail work of the fraternity.

Discussion and consideration of a possible rule permitting undergraduates to wear only unjeweled badges.

Important discussion in regard to the place of fraternity in life.

Discussion of Endowment Funds.

Reading of the minutes of the day.

Adjournment.

REPORT OF THE GRAND PRESIDENT

1920-1921

To give facts and figures of the past year in this, the Grand President's report, would be merely to repeat what has already been brought out by the reports of the other members of the Grand Council, the Chairmen of Committees, etc. I shall therefore save your time and mine and mention several experiences of the year 1920-21, which have seemed to me significant in themselves or suggestive of significance for us in the future. I shall also outline for your consideration certain developments and changes which, I think, are absolutely necessary for the future growth and efficient management of our fraternity, Kappa Kappa Gamma.

In the first place, during the year 1920-21, I had the pleasure of installing Gamma Theta chapter at Drake University, Des Moines, Iowa. Epsilon Tau Sigma was a local of splendid standing and growth, having been in existence some years. Many of its alumnae are also alumnae of Kappa Kappa Gamma. I feel that we shall be strengthened by the addition of this chapter to our roll, also by the addition of Gamma Iota chapter which I hope to install at Washington University, St. Louis, Missouri, in September, the petition having been favorably voted upon this spring. NEW ENTHUSIASM! This, among other gifts, these two new chapters bring to us, I am sure. A group of young college women who have dreamed a beautiful dream through many years which was to culminate only when their "hearts were beating 'neath a golden key," who have worked as they have never worked before, encountered discouragements (how black only a petitioning local can say), but who have worked on in the belief that Kappa

Kappa Gamma was worth every bit of fight that was in them, these young women, I say, can do nothing else than make us stronger for their being with us. We welcome them. Would that our chapters could always have the stimulus of working for their charters! I believe we should have no chapters whose members lack responsibility, the kind of individual responsibility which alone can make a strong organization. I believe our morale would be higher. I believe that some of our oldest and strongest chapters (strongest as told by the measuring rod of success as applied by the world) need some such stimulus. They themselves have agreed with me. But how should we apply it? Does Grand Council inspection and visiting help? I believe it does. I believe we must get the closest possible contact between the Grand Council and province officers and our chapters and alumnae associations.

To me the biggest question in the Extension Problem comes after we have annexed a new chapter. We have no difficulty in annexing strong locals as chapters of Kappa Kappa Gamma, but I feel strongly the absolute necessity of keeping in very close touch with our new chapters during the formative, building period of their existence as chapters of our fraternity. This, I am sure, we have not always done, probably for very good and sufficient reasons, such as lack of sufficient funds. Without hesitation I say: Annex only as many chapters as we can properly assimilate and guide. I am a strong believer in the ability of a strong national to develop through the influence of idealism and Grand Council supervision and guidance a powerful organization—yes, even to make out of a rather weak group, handicapped by strong competition, such an excellent organization. But this means much work and much thought for somebody. It has been successfully demonstrated several times, to my definite knowledge. Again, therefore, I plead for close contact between Grand Council and chapters.

During the year I have visited few chapters, but among those I have visited are several of our largest chapters and one of the smallest. From these visits I drew many conclusions, of course. One, however, I want to mention here, and that is the question of special dispensations regarding Standing Rule 53. In the last few years, many special dispensations have been granted; year after year the same list of chapters make the request—with a few exceptions. In my humble opinion, we should either make an effort to abide by the rule or do away with it altogether. It means nothing as it now stands. I believe (and those who made that Standing Rule a part of the law of our fraternity believed) that thirty is the ideal chapter. I believe that a chapter of from forty to fifty is entirely too large to be effectively handled. And I believe that there is no reason whatever why every one of you large chapters should not reduce your number gradually until you at least approach the normal. It has been my experience that chapters which run so large have much more difficulty in maintaining a spirit of unity within the group; that the large chapters miss something which they can not afford to miss, the real vision of FRATERNITY; that real difficulties of a serious nature arise in the large chapters which do not in the smaller ones. I am sure many of you can from sad experience bear me out in this.

Beginning in the fall of 1921, therefore, we shall start to reduce the size of the chapters that have been receiving dispensation year after year. We do not expect to do this all at once. We shall take up each case separately, advising and recommending certain limits, taking into consideration the conditions in the university community concerned.

The great change which I am recommending in our organization is that we have one officer of the fraternity who shall be a paid officer, having an office which shall be the Central Office of Kappa Kappa Gamma, said officer to give her full time to her fraternity work. All permanent records of the fraternity shall here be housed. All the detail work, as far as is possible, will here be taken care of. An examination into the workings of the various national fraternities will show you, I believe, that we shall have to come to this if we are to continue to grow and be efficiently managed. Such an officer would, I think, relieve the other officers of much detail work with which they should not be burdened. My recommendation then to you is that we combine the offices of Grand Secretary and Treasurer, making this officer the salaried officer on the Grand Council. I do not wish to underestimate the value of Grand Officers who do their work for the fraternity because of their love and loyalty for that fraternity. There is much to be done under this new plan by such officers, much along the lines of leadership, guidance, suggestion and inspiration. Merely consider the mass of detail work which must be done in a fraternity which boasts forty-eight chapters and as many alumnae associations and more. Consider also the amount of money which is handled by such a fraternity. And then ask yourself if any business organization could exist with the kind of organization we now have. We must have a business head as well as an inspirational head. I think we can have this best by following some such plan as I have briefly outlined above. I have many facts and figures from other fraternities but I have not space to give them here.

Respectfully submitted,

SARAH B. HARRIS.

REPORT OF GRAND VICE-PRESIDENT

1920-1921

	<i>October, 1920</i>	<i>August, 1921</i>
Alumnae Associations	43	47
Clubs	17	9

Eleven New Associations—St. Lawrence, Canton, N. Y.; Akron, Lexington, Hillsdale, Omaha, Madison, Manhattan (Kansas), Lincoln, Albuquerque, Boise, Tacoma.

Two New Clubs—Bluffton (Indiana), Toronto.

Accredited Clubs—Topeka, Bluffton, Hutchinson, Adrian, Tulsa, Minnesota.

Associations that have disbanded—Palestine, Boulder, Beta Eta.

Clubs that have disbanded—Beta Gamma, Iota, Mu.

Hope to have new associations in Spokane, Memphis, Ft. Worth and Billings, Montana.

A letter was sent to all Alumnae Associations in the fall telling the most important legislation made at Convention and explaining the Christmas card sale. Two follow-up postal cards were sent about cards.

A letter was sent to all clubs telling them of the new rules made at Convention in regard to clubs and urging them to become accredited. Follow-up letters were sent to those who did not respond.

Letters were sent to Province Vice-presidents enclosing typewritten copies of the revised Standing Rules in regard to associations, urging them to form new associations and clubs. Letters were again sent in the spring enclosing annual report blanks.

The Alumnae Associations have been very responsive this year and have seemed to take considerable interest in the national affairs of the fraternity, as is evidenced by their splendid subscriptions to the Students' Aid Fund and the Bellevue-Meudon Fund and their votes on questions submitted to them.

Gifts to the amount of \$1,203.43 have been sent to the Chairman of the Students' Aid Fund by Alumnae Associations and \$745.04 to the Bellevue-Meudon Fund. The Alumnae Associations have done some very interesting local charities and most of them seem to have some real purpose. A number of associations located in college towns are helping their chapters pay for their homes or are making definite plans to buy homes. Several associations helped splendidly in the sale of Christmas cards.

The alumnae charters were printed this year and most of the associations now have them signed by the proper officers.

A letter was sent to all chapters in the spring about their duties as potential alumnae.

After the chapters had voted by a large majority to sell Christmas cards again next year to raise money for our Philanthropic Fund, the Grand Vice-president was appointed chairman of a committee composed of Charlotte P. Goddard, Chairman of the Students' Aid Fund, and Esther Wiley, Beta Pi, to choose the cards for next year from samples submitted by The Cellini Shop, Evanston, Illinois, Miss Cleora Wheeler, and The Sherlock Engraving Company, Denver, Colorado. The bid was given to the last named firm and a contract made for 50,000 cards. It was decided that the chapters be asked to sell 800 cards instead of the 1,000 that they had agreed by vote to sell.

Respectfully submitted,

ESTELLE K. KEMP.

REPORT OF BELLEVUE-MEUDON FUND

1920-1921

Gifts Received

Milwaukee Association.....	\$ 6.00	Los Angeles Association....	25.00
Detroit Association	50.00	Portland Association.....	30.00
Phi Chapter.....	10.00	Cleveland Association.....	75.00
Indiana Kappas.....	68.04		
St. Louis Association.....	10.00		\$434.04
Cincinnati Association.....	25.00	New York Association sent	
Detroit Association.....	75.00	direct to France.....	311.00
Boston Association.....	10.00		
Detroit Association.....	50.00		\$745.04

\$1,321.72 from sale of Christmas cards put in Savings Account—interest to be sent semi-annually.

Disbursements

Draft sent Madame Fischbacher in December.....	\$ 56.00
Draft sent Madame Fischbacher in February.....	88.04
Draft sent Madame Fischbacher in July.....	290.60
	\$434.64
Interest on savings account.....	17.60
	\$452.24

The Detroit Association, Beta Iota Association and North Shore have sent several bundles of clothing. Other associations may have sent clothes who have not notified me.

Respectfully submitted,

ESTELLE K. KEMP.

REPORT OF GRAND SECRETARY

CONTINUED INFORMAL PETITIONS

Gamma Iota, Oregon Agricultural College, Corvallis, Ore.
 Gammi Chi, Oklahoma A. & M., Stillwater, Okla.
 Alpha Gamma Phi, Lawrence College, Appleton, Wis.
 Ero Alphan, Michigan A. & M., Lansing, Mich.
 Kappa Kappa Kappa, University of Arkansas, Fayetteville, Ark.

NEW INFORMAL PETITIONS

Delta Kappa, Bradley Institute, Peoria, Ill., June 19, 1920.
 Entre Nous, Kansas State Normal School, Emporia, Kan., Aug. 11, 1921.
 Theta Pi Gamma, Beloit College, Beloit, Wis., Sept. 18, 1920.
 Coalition Club, George Washington University, Washington, D. C., Sept. 8, 1920.

Theta Lambda Sigma, George Washington University, Washington, D. C., Oct. 27, 1920.

Local group at Whittenberg College, Springfield, Ohio, Oct. 21, 1920.

Theta Delta Sigma, Hanover College, Hanover, Ind., Nov. 3, 1920.

Upsilon Delta Beta, College of William and Mary, Williamsburg, Va., Dec. 6, 1920.

Local group at Rollins College, College Park, Florida, Dec. 8, 1920.

Local group at University of Maryland, College Park, Md., Jan. 10, 1921.

Kappa Delta, New York State College for Teachers, Albany, N. Y., March 1, 1921.

Gamma Sigma Rho, University of South Dakota, Vermilion, S. D., April 11, 1921.

Alpha Chi, Middlebury College, Middlebury, Vt., April 11, 1921.

Gamma Zeta, University of Wyoming, Laramie, Wyo., May 6, 1921.

Phi Lambda Chi, Bethany College, Bethany, W. Va., June 2 1921.

Local group at Monmouth College, Monmouth, Ill., June 17, 1921.

FORMAL PETITION

Delta, Washington University, St. Louis, Mo., Dec. 10, 1920.

CHAPTER AND ALUMNAE ASSOCIATION VOTES

February 8, 1921

That a charter of Kappa Kappa Gamma be granted the petitioning local, Epsilon Tau Sigma, of Drake University, Des Moines, Iowa.

Chapters—Affirmative 43; negative 3.

Alumnae Associations—Affirmative 36; negative 1.

April 28, 1921

That a charter of Kappa Kappa Gamma be granted the petitioning local, Delta, of Washington University, St. Louis, Mo.

Chapters—Affirmative 47; negative 0.

Alumnae Associations—Affirmative 33; negative 1.

CHAPTER VOTES

March 10, 1921

That Kappa Kappa Gamma sell Christmas cards again this (1921) Christmas for the benefit of the Philanthropic Funds.

Affirmative 30; negative 15; no vote 1.

COUNCIL VOTES

November 22, 1920

That the Grand Council ratify the action of the Grand Treasurer in appointing Mrs. Parke R. Kolbe Business Manager of THE KEY.

November 22, 1920

That, in accordance with the suggestion of the former Chairman of the Scholarship Committee, the name of that Committee be changed to read Committee on Scholastic Standing.

November 23

That Grand Council grant permission to Eta chapter to initiate Mrs. Katherine Brandenburg Bassett. Not granted.

November 23

That Standing Rule 20 (a) be changed to read: . . . but in case of expenditures by the Grand President orders shall be endorsed by that member of the Grand Council whose address is nearest that of the Grand Treasurer.

November 23

That Grand Council ratify the appointment of the following deputies:

Grand President's Deputy—Florence I. Claney, Upsilon.

Grand Vice-president's Deputy—Mrs. Katherine Morley Shelton, Beta Mu.

Grand Secretary's Deputy—Frances Van Zandt, Beta Xi.

Grand Treasurer's Deputy—Fanny Cheyney, Beta Iota.

Grand Registrar's Deputy—Marian Reed, Beta Omega.

Editor's Deputy—Rosalie B. Geer, Beta Sigma.

November 24

For Province President of Iota Province:

Mrs. Abbie Lucy Swift 1

Lesetta Lubken 3

Anne Rector 2

For Province President of Theta Province:

Mrs. Chas. E. Lucas 0

Ruth Klinglesmith 4

Alice Parkerson 2

November 25

That the Custodian of the Badge be authorized to buy from Wright, Kay and Co. their dies for Kappa Kappa Gamma keys and that the Grand Treasurer be authorized to send fifty dollars (\$50.00) to pay for same.

January 3, 1921

That Gamma Zeta chapter be granted special dispensation in regard to Standing Rule 53.

January 6

That the Grand Council ratify the action of the Grand President in granting special dispensation to Beta Zeta chapter in regard to S. R. 53 permitting them to have over thirty in the active chapter.

January 26

That the Savings Account of the Key Publication Fund be transferred to the First-Second National Bank, Akron, Ohio, after the January interest has been paid at the Baltimore Bank in which the funds are now kept.

February 8

That the Grand Council grant special dispensation to Iota chapter in regard to S. R. 53.

February 8

That Grand Council ratify the action of the Grand Vice-president in granting special dispensation to Theta chapter in regard to S. R. 53.

February 8

That Beta Mu chapter be granted special dispensation in regard to S. R. 53.

February 8

That Beta Chi chapter be granted special dispensation in regard to S. R. 53.

February 21

That the Grand Council uphold Delta chapter in its desire to dismiss a member.

March 1

That Grand Council grant special dispensation to Beta Pi chapter to initiate Mrs. Marian Robinson Lutes who was a member of the original local, Alpha Kappa Gamma, that petitioned Kappa Kappa Gamma.

March 3

That Grand Council ratify the action of the Grand President in granting special dispensation in regard to S. R. 53 to Beta Pi chapter.

March 9

That Upsilon chapter be granted special dispensation in regard to S. R. 53.

March 14

That Grand Council ratify the action of the Grand President in granting special dispensation to Eta chapter in regard to S. R. 53.

March 14

That the Grand Council ratify the action of the Grand Secretary in granting special dispensation to Beta Beta chapter in regard to S. R. 53.

March 22

That Beta Delta chapter be granted special dispensation in regard to S. R. 53.

April 8

That Grand Council ratify the action of the Grand Secretary in granting special dispensation to Beta Phi chapter in regard to S. R. 53 permitting them to have thirty-six in the active chapter provided the scholastic standing of the initiates is satisfactory.

April 30

That the Grand Council ratify the action of the Grand Vice-president in placing the moneys for the Bellevue Meudon Fund in the Broadway Bank in Denver.

June 4

That Eta chapter be granted special dispensation in regard to S. R. 53 permitting them to initiate eleven girls who have satisfactorily fulfilled the scholarship requirements.

June 15

That Kappa Kappa Gamma send in an affirmative vote for the rulings passed by the National Panhellenic Congress, October, 1917.

June 15

That Kappa Kappa Gamma favor changing the name National Panhellenic Congress to National Panhellenic Conference.

OFFICIAL VISITS BY GRAND SECRETARY

Delta local of Washington University, St. Louis, Mo.

St. Louis Alumnae Association.

Mu, Gamma Epsilon, Beta Upsilon, Beta Nu, Gamma Delta, Iota, Delta, Beta Theta.

NEW CHAPTERS

April 30, 1921

Gamma Theta chapter, Drake University, Des Moines, Iowa.

Inspecting Officer—Estelle Kyle Kemp, Grand Vice-president.

Inspecting Representative from Beta Zeta chapter—Margaret Mulroney.

Installing Officer—Sarah B. Harris, Grand President.

Respectfully submitted,

DELLA LAWRENCE.

REPORT OF GRAND TREASURER

Statement, July 1, 1921

Stationery, Postage, Telegrams and Express	\$ 368.69
Convention 1920	4.24
Printing	935.92
Chapter Visiting	350.71
Clerical Assistance	1,320.00
National Panhellenic Dues	15.00
Inspection Petitioning Chapters	115.56
Bonding Grand Treasurer	40.00
<i>Banta's Greek Exchange</i>	25.50
Christmas Cards	2,880.86
Bellevue-Meudon Fund	1,335.22
Student's Aid Fund	1,353.22
Installations	46.33
Publication of KEY	1,700.00
KEY Publication Fund	1,093.00
Miscellaneous	66.35
Cash on hand Savings Account	12,397.12
Cash on hand Active Account	92.90

Annual Chapter Dues	\$13,131.35
Alumnae Association Dues	667.90
Club Dues	30.00
Charter Fee	450.00
Fines	96.85
Refund	278.32
Convention <i>Hoot</i>	147.05
Jewelry Commission	1,053.82
Philanthropy Fund	4,954.90
Miscellaneous	60.76
Interest July 1, 1920, Savings Account	70.45
Interest January 1, 1921, Savings Account	61.88
Interest July 1, 1921, Savings Account	27.27
Interest August, 1920, Active Account	8.66
Balance from former Administration	3,119.41

\$24,158.62 \$24,158.62

Respectfully submitted,

GERTRUDE K. WOOD,
Grand Treasurer.

BUDGET 1920-1922 ADMINISTRATION
(Second year of Administration)

Disbursements

KEY Publication Fund—remainder due from one half balance from former Administration	\$ 559.71
KEY Publication Fund—advanced for printing of Catalogue 1920.	1,000.00
1921 Council Session	900.00
Publication of KEY (including stamps and sta- tionery for Business Manager)	2,000.00
National Panhellenic Conference	100.00
Printing	500.00
History of the Fraternity—adv. for printing	500.00
Songbook—adv. for printing	400.00
Allowed for adv. payment for Christmas cards	1,000.00
Clerical Assistance	1,350.00
Chapter Visiting	2,000.00
Stationery, Postage, Telegrams and Express	500.00
National Panhellenic Dues 1921-1922	15.00
<i>Banta's Greek Exchange</i> for Grand Council, Ch. of Committees and Prov. Presidents.....	25.50
Students' Aid Fund—from Jewelry Commission	1,053.82
Students' Aid Fund—money from Convention <i>Hoot</i> ..	37.30
Auditing books and bonding Grand Treas., Ch. Students' Aid Fund and Bus. Mgr. of KEY	200.00

1922 Council Session	\$ 900.00
Allowed entertaining chapter at Convention	399.00
1922 Convention for Grand Council and Ch. of Committees	1,200.00
1922 Convention chapter delegates expenses	7,000.00
1922 Convention Prov. Presidents' expenses	1,200.00
Reserved for emergency	2,350.00
Miscellaneous	68.69

Receipts

Balance from former part of Administration	\$12,400.02
Annual Chapter Dues	12,000.00
Annual Alumnae Association Dues	650.00
Annual Club Dues	30.00
Interest	80.00

\$25,160.02 \$25,160.02

SINKING FUND

Statement June 1, 1921

Balance from former Administration	\$ 174.16
Interest on General Account	7.35
Interest on Liberty Bonds	70.29
Liberty Bonds, Plainfield Trust Co., Plainfield, N. J... ..	1,650.00
	<hr/>
	\$1,901.80

There have been no disbursements from this Fund.

Respectfully submitted,

GERTRUDE K. WOOD,
Grand Treasurer.

REPORT OF THE BUSINESS MANAGER OF THE KEY

October 1, 1920, to July 15, 1921

KEY PUBLICATION FUND

Deposited in The First-Second National Bank of Akron, Ohio

Receipts

528 Chapter payments of \$5.00	\$2,640.00
6 Chapter payments of \$10.00	60.00
26 Chapter payments of \$15.00	390.00
12-5 year subscriptions for Beta Psi	
Chapter in Canadian exchange	52.03
6 Alumnae Association payments of \$5.00	30.00
3 Alumnae Association payments of \$10.00	30.00
5 Alumnae Association payments of \$15.00	75.00
3 Single payments of \$5.00	15.00
2 Single payments of \$10.00	20.00

\$3,312.03

Less \$55.00, amount of two checks which
had to be returned for endorsements \$55.00

Total Subscriptions	\$ 3,257.03
Refunded from Grand Treasury on amount advanced for Publication of <i>Directory</i>	1,000.00
Savings at The Equitable Trust Co., Baltimore, Md.	15,278.36
Total Receipts	\$19,535.39

GENERAL FUND

Receipts

6 Chapter subscriptions at \$1.00	\$ 6.00
333 Alum. Assn. and Club sub. at \$1.00	333.00
21 Single subscriptions at \$1.00	21.00
Total Annual subscriptions at \$1.00	\$ 360.00
17 copies of KEY at 25c	4.25
18 copies of <i>Directory</i> at 50c and 1 at 75c	9.75
Exchanges on checks25
Advertisements	100.00
Interest from KEY Publication Fund	329.37
Grand Treasury:	
To officers incidentals	100.00
To 4 issues of the KEY at \$350.00	1,400.00
To April issue of KEY	200.00
Total Receipts	\$2,503.62

Disbursements

1920

November 24, Lalah R. Warner—to letter heads	\$ 10.25
November 24, The Geo. Banta Pub. Co. Postage	5.02
December 14, The Geo. Banta Pub. Co. Expiration blanks	17.84
December 14, K. T. Mullin. To art work for KEY	10.00

1921

January 1, Elis. Bartlett. To advance for October KEY	206.27*
January 15, Commercial Printing Co. Paper for mailing lists	16.00
January 22, The Geo Banta Pub. Co. Publication of December 1920 issue of KEY	739.00
February 21, <i>Banta's Greek Exchange</i> , of Editors	1.50
February 21, Mrs. Landen. Refund	6.00

March 12, K. T. Mullin to multigraphing letters and postage	\$ 3.80
March 12, The Geo. Banta Pub. Co. To postage38
March 28, Library Bureau, Cards for Bus. Mgr.	7.33
April 16, The Geo. Banta Pub. Co. To publishing February, 1921, issue of KEY	806.81
May 5, The Geo. Banta Pub. Co. To publishing April, 1921 issue of KEY	457.79
May 5, Cleora Wheeler, To official paper for Bus. Mgr.	8.75
July 3, The Geo. Banta Pub. Co. To postage	14.09
July 15, Bus. Mgr.	18.99
July 15, Bus Mgr. Postage and typing lists	27.94
Total Disbursements	<u>\$2,357.76</u>
Balance on hand July 15, 1921	145.86

*The October issue cost \$862.94. Miss Bartlett paid all but the \$206.27 from money in hand when she turned over her books to me.

BUDGET FOR THE KEY

July 15, 1921, to June 30, 1922

KEY Subscriptions	\$ 325.00
Interest from KEY Publication Fund	600.00
Advertisements	125.00
Advanced by Grand Treasury for Expenses of Publishing of THE KEY	2,100.00
Receipts	<u>\$3,150.00</u>
Publication of THE KEY—4 issues at \$750.00.....	\$3,000.00
Officers' incidentals	150.00
Disbursements	<u>\$3,150.00</u>

LYDIA V. KOLBE,

Business Manager of THE KEY.

REPORT OF GRAND REGISTRAR.

As a result of the action taken by the convention of 1920 in combining the offices of Grand Registrar and Director of the Catalogue, the scope of the Grand Registrar's work has been vastly enlarged. Another responsibility assigned to the office by the 1920 convention was the handling of the Student Aid Fund tax on each initiation fee. A year's observation convinces me that the reorganization adds not only to the efficiency of the Council but also considerably lightens the burden of chapter registrars. Due, however, to belated arrival of archives, delay in printing constitutions, a protracted search for a lost die for membership certificates, etc., it

will take another year to organize and systematize the duties of the Grand Registrar on the new basis.

RITUAL

On September first, 1920, copies of the new ritual parts adopted at convention were mailed to the chapters, Province Officers, and Grand Council with an explanatory letter. During the year twelve copies of the complete ritual were made for the Grand Registrar's archives as the supply had been exhausted. Copies of part of the Ritual were sent to Miss Dorothy Musser and to Beta Zeta and a complete ritual was sent to Miss Hope Mille of Hillsdale for her use in lettering a new book.

ARCHIVES

Necessary archives were sent for the installation of Gamma Theta at Des Moines.

Three 1913 catalogues and a copy of "Kappa's Record" were sent to replace lost copies. Unless the archives of some other officer contain surplus copies of "Kappa's Record" the supply is completely exhausted. After the first distribution of the constitutions the supply was turned over to me by Mrs. Kolbe in April—since then seven copies have been sent to chapters whose consignment was lost in the mails.

SPRING EXAMINATIONS

Spring examinations were sent in March and returned in May. An earnest effort was made for the most part to frame questions which stimulate thought on the broader aspects of fraternity life rather than appeal merely to rote memory.

MATERIALS DISTRIBUTED

During the year 1,005 blank catalogue cards were issued to chapters whose supply had been exhausted. Two hundred and sixty-seven membership certificates were issued. Many chapters sent no cards and part of the work of the next year will be an attempt to bring chapters up to date on their card catalogues.

Election blanks for chapter registrars were enclosed with the spring examinations with a note appended explaining the necessity of a complete list of chapter registrars for the efficiency of the Grand Registrar.

CHAPTER VISITS

The Grand Registrar made chapter visits of three days each to Beta Omega, Beta Pi, Beta Kappa, Gamma Eta, Beta Phi, Gamma Gamma, and a two day visit to Gamma Iota, the local at Corvallis which is informally petitioning Kappa.

Respectfully submitted,

CATHARINE BURNSIDE.

REPORT OF EDITOR OF THE KEY.

Four numbers of THE KEY were published in the past college year—in October, December, February and April. This is the first time that the last number of the year was issued in April instead of May. The change was voted at the 1920 Convention. It has been an improvement, as heretofore many students left college without receiving the May number.

The October KEY was the Golden Jubilee number, and contained a résumé of Kappa history by Florence Burton Roth, photographs of two of our founders, Miss Jeannette Boyd and Mrs. Louise Bennett Boyd, and a greeting from them. Also many pictures taken at convention, and stories of convention. The December number contained pictures of most of the active chapters. In February came the annual alumnae number. In April was routine KEY material. All KEYS had letters from Madame Fischbacher and Dorothy Canfield Fisher about the Kappa work at the dispensaire at Bellevue-Meudon.

Lalah Randle Warner, *Delta*, was asked to continue her department, "Kappas Known to Fame," and she kindly consented. Eleanor Aldridge, *Beta Beta*, continued her Exchanges and Panhellenic Survey. Rosalie Geer, *Beta Sigma*, is chapter letter editor. Helen Bower, *Beta Delta*, has been added to THE KEY staff, and has two departments, "Hoots" and College Notes. Estelle Kyle Kemp, Grand Vice-president, is alumnae editor, and has secured many interesting articles from alumnae for her department. Lydia Voris Kolbe is Business Manager. To all of these the editor wishes to express her grateful appreciation for their work and co-operation.

One disappointing feature of THE KEY work this year has been the carelessness of many of the chapter correspondents. More have neglected to send their letters than ever before. Rules for copy were in the October KEY, and dates when copy is due are in every KEY. In a personal letter to every chapter in February a request was made for pictures of Phi Beta Kappas. Very few chapters complied with this request.

KATHERINE T. MULLIN.

REPORT OF HISTORIAN

I report that the history is slowly assuming form and that I have been in correspondence for some months with the Banta Publishing Co. concerning the work. Mr. Peerenboom of that company may come to Erie, or rather, stop en route, sometime in September, to go over the material. I think perhaps I have consumed too much time trying to straighten out the conflicting evidence concerning the early days. Especially since last convention I have felt that some details ought to be more definitely established where the memory of those concerned is so conflicting. However, there is much of that period that we cannot positively narrate with accuracy and I have decided to give up finding convincing proof of some of the details.

I am planning to have the history interesting and readable rather than exhaustively statistical, and therefore it will not be a very large volume. I have been trying to get estimates of the price of publication but that de-

pends largely on the number of books issued and it was concerning that I wrote Sarah in June. I could not guess what number we ought to print. Mr. Peerenboom informs me that Gamma Phi Beta is bringing out an edition of 1,000 copies of their new history. Their magazine has a circulation of 2,000. Mr. P. wanted to know whether we had passed any legislation guaranteeing the sale of the book, that is, requiring chapters or members to purchase it, and I told him we had not done so and I hoped that would not be necessary. In fact I am opposed to such methods if it can be avoided. The cost, of course, will also be affected by the number of illustrations used, and I wanted your advice about using cuts of all the chapter houses now owned by the chapters. I think I have pictures of all collected for that purpose and would like to use them. Then, too, it occurred to me that THE KEY must own a good many valuable cuts that could be and should be used.

I am very glad to report that Dorothy Canfield Fisher has consented to write for the book a history of the Bellevue-Meudon enterprise which will constitute one chapter appearing over her own name.

Mrs. Kuhns wanted to alter and correct the autobiographical sketch I have of her life and asked me to send it to her for that purpose. I wrote to her Berkeley Springs address a long time ago asking where I should send the manuscript, but have never heard from her. It is such delays all during the past year that have kept the work back.

Charlotte Powell Goddard wrote an account of the Student's Aid Fund which you will remember was read at Convention, but she sent word that she wanted to revise that account before it was used in the history, in fact, I recall that she did not give the correct origin of the fund, which was started by a member of Beta Alpha for scientific work at Woods Hole, Mass. Will one of you please ask Mrs. Goddard to send me her history of the Scholarship Fund at her earliest convenience?

This is a very informal and unusual kind of a report to make but it is the only kind possible under the circumstances. I can only assure you that I am earnestly hoping to have my material ready for the printer early this fall, and I will greatly appreciate your advice and help as above indicated. To recapitulate—will you please decide how large an edition we better publish; will you please let me know whether any of the cuts, especially those of historic interest, previously used in THE KEY, will be available, and whether you approve using the pictures of the houses owned by the chapters?

I trust you may have a satisfactory and delightful session, and I hereby send most cordial greetings to each one.

FLORENCE BURTON ROTH.

REPORT OF CUSTODIAN OF BADGE

To the Grand Council and Chapters of Kappa Kappa Gamma, Greeting:

With the question of sole-jewelership no longer agitating the fraternity, the past year has seemed a quiet one from the point of view of the Custodian. The number of badges ordered during the present year will be

somewhat in excess of one thousand, no gain over last year's number which was 1,036. My correspondence has been voluminous, unnecessarily so, I sometimes think, but with the constant changes in the list of corresponding secretaries the same mistakes are made and the same explanations required again and again. But I have little cause for complaint as the spirit of the chapter secretaries is all that could be desired. There are many letters written to alumnae members and needless delays in securing badges because these members do not know that all orders for badges come through their chapter secretaries.

A comparative statement of orders for two years and ten months follows:

	Toronto T.-C.	Wright Kay	Hoover Smith	Shreve	Edwards Halde- man	Burr-P.	Auld	Newman	Total
1918-1919	7	10	35	62		153	150	383	800
1919-1920	12	19	45	91		120	258	491	1,036
1920-21 (10 mos.)	19	1	44	91	103	126	285	314	983

The Custodian notes with approval the tendency toward more equal division of orders among the firms which handle the bulk of the fraternity's business. Better service will result from this.

To the property of the Custodian has been added the set of dies used by Wright, Kay and Company, purchased in order that they might not fall into the hands of an unauthorized firm. Since the new badge being made by the Toronto Trophy Craft Company is still not of the grade made by the other firms it may be possible to dispose of these dies to this firm or to some other Canadian jeweler, yet to be appointed. Personally I favor the plan proposed at Council Session last summer of having one of the jewelers in the States supply the Canadian chapter.

The appointment of Edwards, Haldeman and Company as official jeweler has been justified, the firm having given satisfaction both in service to the chapters and in the style and quality of badges.

Complaints from the chapters have been fewer than in other years since improved business conditions have made it possible to make deliveries more quickly but the jewelers have had cause to complain of a number of chapters because of the number of orders cancelled. I suggest that Grand Officers when visiting chapters caution the girls against imposing thus upon our jewelers who are always eager to do anything within reason to satisfy the chapters.

The slender type of badge is now being made by all our jewelers and bids fair to become the universal style for active members.

MAY C. W. WESTERMANN.

**STATEMENT OF STUDENTS' AID FUND—JUNE 10, 1920, TO
JULY 27, 1921**

Receipts

Balance, June 10, 1920	\$6,046.12
Chapter Tax	326.50
Interest on savings accounts	288.40
Interest on Juliette Geneva Hollenback Memorial Fund	200.00
Interest on Liberty Bond	10.63
Interest on note of member of Beta Nu	1.16
Christmas cards	1,335.22
Expenses Student Aid Fund	27.05
Balance note of member of Sigma, due Oct. 1, 1920	25.00
Balance note of member of Beta Nu, due July 1, 1920	50.00
Note of member of Kappa, due Jan. 1, 1921	150.00
Note of member of Beta Nu, due March 1, 1921	150.00
Note of member of Kappa, due Oct. 1, 1920	100.00
Note of member of Psi, due April 1, 1921	50.00
Note of member of Beta Nu, due July 1, 1920	35.00
Note of member of Beta Tau, due June 1, 1921	125.00
Note of member of Pi, due July 1, 1919	100.00
Note of member of Pi, due July 1, 1919	100.00
Note of member of Psi, due July 1, 1921	200.00
Note of member of Psi, due July 1, 1921	150.00
Cash from Golden Jubilee Convention	86.35
Kappa Province	25.00
Texas delegate and visitors at convention	26.00
Delta Province	26.00
Bloomington, Ind., A. A.	10.00
Milwaukee A. A.	25.00
Columbus A. A.	64.00
Bloomington, Ill., A. A.	115.18
Indianapolis A. A.	211.25
Muncie A. A.	12.00
Philadelphia A. A.	76.00
North Shore A. A.	115.00
Pi A. A.	50.00
Cincinnati A. A.	50.00
St. Louis A. A.	50.00
Seattle A. A.	50.00
Chicago A. A.	70.00
Detroit A. A.	50.00
Syracuse A. A.	75.00
Cleveland A. A.	100.00
Los Angeles A. A.	125.00
Portland A. A.	85.00
Western New York A. A.	50.00
Akron A. A., to establish Helen Harter Memorial	50.00

Indiana Kappas Founders' Day Luncheon	\$ 68.04
Eta chapter	100.00
Pi chapter	25.00
Beta Psi chapter (\$9.00 less exchange)	7.47
Beta Rho chapter	22.00
Omega chapter	18.00
Upsilon chapter	25.00
Beta Mu chapter	\$ 50.00
Beta Theta chapter	25.00
May W. Westermann, Sigma	100.00
Tade Hartsuff Kuhns, Mu	25.00
Harriet Blakeslee Wallace (Kappa Symphonies)	40.00
Katherine T. Mullin, Beta Sigma	10.00
Mary Leaphart, Beta Chi	10.00
Dorothy Winders, Beta Nu	5.00
Minnette Fritts, Beta Nu	2.00
Lydia V. Kolbe, Lambda	23.00
Frances Cheney, Beta Iota	7.50
Helen Comstock, Beta Tau	5.00

\$11,633.87

Disbursements

Loan to member Beta Upsilon	\$125.00
Loan to member Beta Xi	450.00
Loan to member Gamma Delta	650.00
Loan to member Theta	400.00
Loan to member Beta Tau	200.00
Loan to member Kappa	150.00
Loan to member Upsilon	200.00
Loan to member Gamma Rho	500.00
Loan to member Beta Mu	440.00
Loan to member Phi	200.00
Loan to member Gamma Eta	300.00
Loan to member Gamma Alpha	100.00
Loan to member Kappa	200.00
Loan to member Beta Theta	100.00
Loan to member Gamma Eta	65.00
Loan to member Lambda	150.00
Loan to member Beta Kappa	150.00
Loan to member Beta Tau	350.00
Loan to member Gamma Zeta	250.00
Loan to student, University of Washington	200.00
Loan to student, University of Wisconsin	200.00
Loan to student, Syracuse University	350.00
Refund on Christmas cards	13.50

Running Expenses, Students' Aid Fund	\$54.64
Cash on hand	11.80
<hr/>	
Total	\$ 5,809.94
<hr/>	
Balance on deposit in savings account, International Trust Co., Denver, Colo.	\$ 5,823.93

Assets

Balance on deposit	\$ 5,823.93
Juliette Geneva Hollenback Memorial Fund	5,000.00
Liberty Bonds	250.00
Expenses due from Grand Treasury	54.64
Notes receivable as follows—	
Balance Note of member, Lambda, due July 1, 1917	65.00
Balance Note of member, Beta Tau, due Dec. 1, 1917	35.00
Balance Note of member, Beta Tau, due Oct. 1, 1918	50.00
Note of member Beta Tau, due Oct. 1, 1918	100.00
Note of member Beta Chi, due July 1, 1916	100.00
Note of member Beta Chi, due July 1, 1917	100.00
Note of member Beta Chi, due July 1, 1917	50.00
Note of member of Epsilon, due June 1, 1919	80.00
Note of member Beta Kappa, due July 1, 1921	300.00
Note of member Psi, due July 1, 1923	100.00
Note of member Beta Upsilon, due June 1, 1922	125.00
Note of member Beta Xi, due Nov. 1, 1921	100.00
Note of member Beta Xi, due Jan. 1, 1922	100.00
Note of member Beta Xi, due April 1, 1922	100.00
Note of member Beta Xi, due June 1, 1922	100.00
Note of member Beta Xi, due July 1, 1922	50.00
Note of member Tau, due Jan. 1, 1923	200.00
Note of member Theta, due April 1, 1923	200.00
Note of member Theta, due Jan. 1, 1924	200.00
Note of member Kappa, due June 1, 1922	150.00
Note of member Gamma Delta, due Sept. 1, 1924	70.00
Note of member Gamma Delta, due Sept. 1, 1924	70.00
Note of member Gamma Delta, due Sept. 1, 1924	70.00
Note of member Gamma Delta, due Sept. 1, 1924	70.00
Note of member Gamma Delta, due Sept. 1, 1924	70.00
Note of member Gamma Delta, due Sept. 1, 1924	70.00
Note of member Gamma Delta, due Sept. 1, 1924	70.00
Note of member Gamma Delta, due Sept. 1, 1924	70.00
Note of member Gamma Delta, due Sept. 1, 1924	20.00
Note of member Gamma Rho, due Oct. 1, 1923	250.00
Note of member Gamma Rho, due Oct. 1, 1923	100.00

Note of member Gamma Rho, due Oct. 1, 1923	\$ 75.00
Note of member Gamma Rho, due Oct. 1, 1924	75.00
Note of member Upsilon, due Sept. 1, 1924	100.00
Note of member Upsilon, due Sept. 1, 1924	75.00
Note of member Gamma Eta, due Jan. 1, 1923	300.00
Note of member Beta Mu, due Nov. 1, 1921	60.00
Note of member Beta Mu, due Nov. 1, 1921	60.00
Note of member Beta Mu, due Nov. 1, 1921	60.00
Note of member Beta Mu, due Nov. 1, 1921	60.00
Note of member Beta Mu, due Nov. 1, 1921	60.00
Note of member Beta Mu, due Nov. 1, 1921	80.00
Note of member Kappa, due June 1, 1923	200.00
Note of member Phi, due June 1, 1923	200.00
Note of member Gamma Alpha, due Aug. 1, 1922	100.00
Note of member Beta Theta, due June 1, 1923	100.00
Note of member Gamma Eta, due Sept. 1, 1921	65.00
Note of member Lambda, due May 1, 1922	150.00
Note of member Beta Kappa, due June 1, 1922	150.00
Note of member Gamma Zeta, due Jan. 1, 1923	250.00
Note of member Beta Tau, due July 1, 1922	100.00
Note of member Beta Tau, due July 1, 1923	100.00
Note of member Beta Tau, due July 1, 1924	100.00
Note of member Beta Tau, due July 1, 1925	50.00
Note of student University of Wisconsin, due May 23, 1922..	50.00
Note of student University of Wisconsin, due May 23, 1922..	50.00
Note of student University of Wisconsin, due May 23, 1922..	50.00
Note of student University of Wisconsin, due July 1, 1922..	50.00
Note of student Syracuse University, due Feb. 3, 1922	100.00
Note of student Syracuse University, due Feb. 3, 1923	125.00
Note of student Syracuse University, due Feb. 3, 1924	125.00
Note of student University of Washington, due June 1, 1924	200.00

\$18,488.57

REPORT OF CUSTODIAN OF SONGBOOK

I. PROGRESS IN THE PREPARATION OF THE FIFTH EDITION:

To date contributions of songs have been received from the following 34 chapters: Phi, Beta Sigma, Beta Tau, Beta Beta, Gamma Rho, Gamma Epsilon, Beta Nu, Beta Rho, Iota, Mu, Delta, Gamma Delta, Xi, Kappa, Eta, Chi, Upsilon, Epsilon, Beta Lambda, Beta Zeta, Gamma Alpha, Sigma, Omega, Beta Mu, Gamma Zeta, Gamma Beta, Theta, Beta Theta, Beta Xi, Beta Omicron, Pi, Beta Phi, Beta Pi, Beta Omega, Beta Kappa, Gamma Gamma. The following nine chapters did not reply in any form: Beta Alpha, Beta Iota, Psi, Beta Upsilon, Lambda, Beta Delta, Gamma Eta, Beta Eta.

Some few contributions are still coming in, and I have found it necessary to extend the time limit for receiving songs, twice, as responses to my various appeals for songs were, in many cases, slow. Therefore, the work did not progress as rapidly, at first, as I had anticipated. In every case, thus far, songs submitted have to be rewritten, as the form in which they were sent to me was such that they could not be turned over to a publisher. This, also, means extra time. However, the copy will soon be ready for the engravers.

I wish to explain that the undertaking has been quite difficult since I was not able to get in touch with the former Custodian, to whom I wrote several times in the attempt to obtain information which would have been a great help to me. At present, however, I have things in hand so that I feel sure that the new edition will make its appearance early in the fall.

II. FINANCES:

Received from Mrs. Neva H. Shulze (former Custodian pro tem)	\$78.80
Part of this amount represents payments made on books in the 1916 edition, which will be applied to subscriptions to the new edition and credited to the persons having made such payments.	
Received from the Grand Treasurer (as loan)	100.00 \$178.80
Expenses to date	\$14.13
Cash on hand	164.67 \$178.80

The new edition of the Songbook, judging from informal conference with the publisher, will not exceed the cost of \$2.00 per copy—this amount to cover cost of engraving, printing and binding; mailing; miscellaneous expenses. This is in no way a definite figure as no estimate could be made until copy for the book is completed.

I have planned and inaugurated a system of accounting which will embrace a complete record of finances, as well as the sale and supply of books.

III. BUSINESS POLICY:

Since taking over the affairs of the Songbook, I have realized the need for a more stable business condition surrounding the editing of the fraternity Songbook. I believe that past experience may be called upon to prove that. I, therefore, wish to submit a new plan, which plan I am anticipating using for the present edition, and which I hope will meet with the approval of the Council. I have been in conference with Mr. Paul Bliss, sole editor for the Willis Music Company, and he heartily recommends this plan to the fraternity. In substance, the plan is as follows:

Having been delegated by the fraternity to compile and distribute the fraternity Songbook, that I manage the publication of the book myself, un-

der which arrangement the fraternity will own and control it, because of having in their possession all engraved plates used in the printing of the book.

Thus, representing the fraternity in an individual capacity, as Custodian, with authority to contract for the edition, enables me to publish the book under the plan suggested by Mr. Bliss, at a considerable less cost to the fraternity. This, for the reason that I am in a position to contract separately for the re-writing of the music, engraving of plates, and for printing and binding. By this method the publisher's profit, as a middle-man in the transaction, is saved to the fraternity. According to this plan, the plates are in my possession and at all times available and would admit of several issues of the same edition, thus supplying the increasing needs of the fraternity without contracting for a large amount at first. Also, having control of the publishing of the book, it would simplify matters when omitting songs or substituting new ones for those taken out. In this way the book could be kept in print permanently, and there would exist no such condition as the present one.

To avoid any question as to my authority to represent and contract for the publication, I find it necessary to be in a position to exhibit such authority, which I request be in the form of a letter addressed "To whom concerned," setting forth the fact that I have been appointed Custodian of the Songbook with authority to contract for the publication of the fraternity Songbook, and that a fund of \$500.00 has been appropriated for this purpose for disbursement by me as the needs of the work require.

IV. RECOMMENDATIONS:

I recommend that the Custodian of the Songbook have in her possession all past editions of the Songbook, if this is possible, and if not provided for in any other office, as it seems to me a matter of great interest to have an authority for the complete collection of all published songs of the fraternity.

V. SUPPLEMENTAL:

There are still some matters concerning contracts for the reproduction of certain copyrighted songs, which are unsettled and are causing delay, for after additional attempts, I still have been unsuccessful in getting replies to letters sent to Mrs. Small (Jeannette Comstock); thus, I have been unable to secure copies of any of the contracts for the use of songs for the last edition, and, because of this, three of the favorite songs may have to be left out of the new edition. I regret this condition very much, but have taken the matter up fully with the publishers to see if something could not be done. In spite of this, and similar other delays, I still think the book will be out by early fall.

During June, letters were sent to all chapters, clubs and alumnae associations asking for the approximate number of Songbooks each would require. Thirty-four chapters replied with a total of 528 books required, being an average for the chapters of 16 each. Nine associations and

clubs replied with a total required of 45, this being an average of 5 for each organization. These figures, of course, are only approximate, yet they give a fairly good idea of how large the edition promises to be.

I may state here, that during my term of office, it is my plan to systematically collect songs each year for the next edition, so that upon the expiration of the fifth edition, some new songs will be ready for the sixth without some of the necessary delays incident to the preparation of songs for the present new book.

Since the office of the Custodian of the Songbook has become fairly well established within the past years, may I recommend here that official stationery be provided since the amount of correspondence in connection with the office seems to warrant it.

Respectfully submitted,

CAROLYN L. MCGOWAN.

REPORTS OF COUNCIL SESSION COMMITTEES

CONVENTION COMMITTEE

Invitations for convention were received from Pi, Beta Phi, Beta Omicron and Beta Xi.

Since convention was held in the middle west in 1920, it would seem best to meet in the far western part of the United States for the 1922 convention. According to an estimate made it will cost the fraternity \$2,000 more to meet in the far west than in the middle west. According to the present rate of railroad and Pullman fares, it would cost \$40 more per delegate to go to California than to go to Montana.

The Committee, therefore, recommends that we accept the invitation of Beta Phi chapter and convene at Glacier National Park in the summer of 1922.

FINANCE COMMITTEE

The Finance Committee recommends:

1. That we continue our policy of economy in regard to stationery and supplies used by the Grand Council and Chairman of Committees.

2. That all chapter delegates to Convention be required to bring the chapter treasurer's book to be examined by the Grand Treasurer.

3. That receipts be sent whenever possible for all requisitions for money from the national treasury.

4. That the national treasury pay the traveling expenses of all Province Presidents and half the expenses of all Province Vice-presidents to the 1922 convention.

5. That the chapter per capita tax be reduced to \$8.00 for the year 1921-22.

KEY POLICY

THE KEY Policy Committee recommends:

1. That the Spring KEY be continued to be printed in April.

2. That a calendar of dates on which reports are due or on which chapter or alumnae duties are to be performed, be printed on the inside cover of every KEY.

3. That the "Directory of Meetings" be omitted from THE KEY and that the new line—"For time and place of meetings write or phone the secretaries" be written above the list of chapters.

4. That the mailing list be examined to see that libraries in colleges where there are Kappa chapters receive KEYS.

5. That the 1922 convention be well advertised in the next four numbers.

6. That the minutes of this Council Session be printed in the October KEY.

EXTENSION

The Extension Committee recommends:

That since the biggest work of extension comes after the charter is granted to a new group, we should exert our efforts toward our new chapters and not endeavor during the year 1921-22 to assume the responsibility of adding other chapters to our list.

That Gamma Iota of Oregon Agricultural College be allowed to continue the work of establishing itself in the interest of the chapters of Iota Province with a view to presenting its petition to the chapters and alumnae associations during convention or in the fall of 1922—provided the chapters in Iota Province are in favor of this extension.

That due to the standing of the school the Council is not in favor of extension into the University of Arkansas at the present time.

That the local, Upsilon Delta Beta of the College of William and Mary, be the object of further investigation by the Extension Committee and that if possible a Council visitor be sent to visit the group during the school year 1921-22.

That the local at Monmouth College, Monmouth, Ill., and Alpha Chi of Middlebury College, Middlebury, Vt., be considered and thoroughly investigated by the extension committee.

SCHOLARSHIP

The Scholarship Committee recommends:

1. That a complete reorganization be made of our Committee on scholastic standing.

- a. That the Chairman of this committee be the Grand Vice-president.

- b. That the Grand Vice-president's deputy shall assist her as a member of this committee.

- c. That there shall be elected by each chapter one active member and one alumna member to work with the Grand Vice-president for the promotion of better scholastic standing in the chapter.

2. That the duty of this Committee shall be to work with the members of the active chapters in the interest of higher scholastic standing.

The duty of the active member shall be to obtain from the registrar or, this being impossible, from the members of the chapter for each term or semester the grades of the members of that chapter and send them to the Grand Vice-president. In the interim between reports any failure on the part of a member of the chapter shall be reported by the active member to the Grand Vice-president.

The duty of the alumna member shall be to keep in close touch with the chapter and the active member on scholastic standing and when notified by the Grand Vice-president to confer with any member specified.

Any failure to comply with the above regulations will result in a fine of not less than \$2.00 and not more than \$10.00.

The Committee further recommends that the following aids to chapter scholarship be used:

1. For all chapters that report low scholarship a system of supervised study be put in force.

2. That active chapters take action to restrict the social privileges of any member low in scholarship.

3. That in cases where the scholastic standing of a member is low, the participation in college activities be limited by the Committee.

4. That a letter from the Grand Council be sent by the chapters to the mothers of pledges telling them the ideals of fraternity life and asking for their co-operation in this matter. This letter will be sent to the chapters by the Council.

5. That if due to poor scholarship a pledge expires, it be not renewed unless there are extenuating circumstances.

6. That some recognition be given to those chapters having the highest scholarship in their colleges.

PANHELLENIC

The Panhellenic Committee recommends:

1. That chapters urge independent girls to organize new locals. It is better to have as many students in organized groups as possible.

2. That the Grand Council when talking to our chapters and Panhellenic groups make them realize that unless fraternities can exist together amicably they have no right to survive.

3. That Kappa Kappa Gamma considers it a waste of time and clouding of the big aim of Panhellenic, which is to maintain fraternity life and interfraternity relationship on a high plane, when fraternities indulge in bickerings over unimportant details such as priority of foundings and installations.

4. That the Grand Council emphasize Panhellenic relations in their visits.

5. That the Grand Registrar incorporate a study of National Panhellenic Constitution and Panhellenic reports of convention in the spring examinations.

6. That the Grand Council will not support breakers of the law but hopes to stand in the position of unprejudiced mediator.

7. Educated women should learn to control their emotions and never allow themselves to indulge in hysteria or dramatics in Panhellenic disputes, whether they be offenders or accusers.

8. That we take a stand against ridiculous penalties which push Panhellenic affairs into the private and social life of the town.

9. That Panhellenic continue to emphasize economy and simplification of rules.

10. That chapters be urged to send their most tactful girls as Panhellenic delegates and not their best scrappers.

RECOMMENDATIONS TO CHAPTERS

The Committee on Recommendations to Chapters recommends:

1. That a system of supervised study hours be instituted in chapters where the scholarship is low.
2. That delegates to the 1922 convention be girls who are sure to return to college, so that chapters may share the inspiration gained.
3. That chapters try to keep membership down to the prescribed thirty, and that it be limited to girls who intend to stay at college for four years.
4. That attention be paid to the calendar of duties printed on the inside of the cover of *THE KEY*.
5. That the president of the chapter be a girl who lives at the chapter-house.
6. That the budget system be used by chapter treasurers.
7. That there be no initiations within six weeks of the close of the college year.
8. That a dismissal be recognized as a disgrace to the chapter as well as to the member dismissed.
9. That if, due to poor scholarship, a pledge becomes void, it shall not be renewed unless there are extenuating circumstances.
10. That a desk be kept in which chapter officers keep their fraternity mail and papers.
11. That the Grand Treasurer be consulted if chaperons are desired. She keeps a list of women recommended for these positions.
12. That chapters ask friends and alumnae to fill out cards noting general characteristics and scholarship of proposed members. These cards to be kept in the archives of the chapter.
13. That it is courtesy to answer letters promptly and carefully.
14. That only official paper, 8 by 11 inches, be used for fraternity correspondence.
15. That Kappa Kappa Gamma stand for refinement in dress and naturalness of appearance.
16. That there be economy and simplicity in entertaining.

17. That college girls, living away from home, should forego the pleasure of having their own motors.

18. That while there is no rule in our fraternity against patronesses (women other than Kappas) it is thought that alumnae should be chosen as advisers and social backers of active chapters.

19. That under no circumstances shall there be mock initiations.

20. That chapter officers have a loose leaf notebook in the archives in which they write suggestions for future officers.

21. That there be no cancellation of badge orders. It is unfair to impose upon our jewelers who are always anxious to do anything within reason to please the chapters.

22. That chapters see that their KEY correspondents have letters in every KEY.

COMMITTEE ON ALUMNAE

The Committee on Alumnae recommends:

That Alumnae Associations take up some local or national philanthropic work rather than be purely social.

The Alumnae Associations who are interested in the national philanthropic work of the fraternity concentrate their efforts this year on the Students' Aid Fund because so many requests for loans are coming to the Chairman it will be necessary to increase the fund.

That the alumnae in towns and cities where there are active chapters be especially urged to form associations in order to advise and guide the chapters.

That Alumnae Associations and Clubs celebrate Founders' Day, October 13, in some suitable manner.

That duplicates of the monthly letters sent to the chapters by the national officers be sent to the Alumnae Associations so that they may keep in closer touch with the fraternity's policies.

That the Grand Officers meet with the Alumnae Associations whenever it is possible when on chapter inspection trips.

That the names of Clubs who have not paid their dues to become accredited be dropped from THE KEY Directory.

COMMITTEE ON CONSTITUTION AND STANDING RULES

The Committee recommends:

That the following changes be made in the Constitution at next convention:

Art. 2, Sec. 16 change "Chairman of the Scholarship Committee" to "Chairman of the Committee on Scholastic Standing."

Art. 3, Sec. 3 before "Commencement" insert "third meeting preceding."

Art. 2, Sec. 4 to read: "If the Grand Council is of the opinion that any chapter is not maintaining adequate standing and that the chapter has grossly violated rules of the fraternity, the chapter and the nearest alumnae association shall be notified that if conditions do not improve the chapter shall be put on probation. If conditions do not improve within six months, the chapter shall be put on probation. If after three years the chapter has not improved a vote of the fraternity shall be taken on the withdrawal of the charter.

Art. 4, Sec. 6 change to read: "If a member violates the principles of the fraternity but the offense is not serious enough to warrant dismissal, she may be put on probation by a three-fourths vote of her chapter and the approval of the Grand Council. If her conduct does not improve within six months, action for dismissal should be taken.

That a discussion of Art. 4, Sec. 3, "A name once blackballed shall never be reconsidered" shall be held at convention.

That the following changes in the Standing Rules be made:

S. R. 10 Change to read: "It shall be the duty of the Grand Vice-president to assist the Grand President, to supervise the alumnae associations, to have charge of the alumnae department of THE KEY, and to act as chairman of the Committee on Scholastic Standing."

15 Omit "any appointment or reappointment to be subject to the ratification of the Grand Council."

40 Change to read: "Each province shall have a province vice-president to be appointed in the same way and for the same term as the province president from a list of candidates submitted by the alumnae associations submitted by her province."

48 Omit section 15 and insert as Sec. 15 "A book containing the written pledge and the dated signature of pledges."

58 Add: "If the pledge becomes void due to low scholarship it shall not be renewed."

39 Insert:.....who will visit, at the authorization of the Grand President, every chapter.....and shall make an annual report to the Grand President in November.

88 Omit: "or a folded sheet, which when opened will be the size of the single sheet."

24 Omit the present wording and insert: "The Chairman of the Committee on Scholastic Standing shall be the Grand Vice-president. There shall be elected from each chapter one active member and one alumnae member to work with the Grand Vice-president for the promotion of better scholastic standing in the chapter. The Grand Vice-president's deputy shall assist her as a member of this committee.

The duty of the Committee on Scholastic Standing shall be to work with the members of the active chapters in the interest of higher scholastic standing. The duty of the active member shall be to obtain from the registrar or, if this is impossible, from the members of the chapter the grades of the members for each term or semester and send to the Grand Vice-president. In the interim between reports any failure on the part of a member shall be reported by the active member to the Grand Vice-president. The duty of the alumnae member shall be to keep in close touch with the chapter and the active member and when notified by the Grand Vice-president to confer with any member specified.

POLICY (to be inserted before Appendix)

Founders' Day, October 13, should be celebrated by every chapter and alumnae association in some appropriate manner. The fraternity colors should be worn on this date, and on the date of the installation of a new chapter.

No initiation should be held within six weeks before the close of the school year.

The Grand Registrar and the Chairman of the Students' Aid Fund feel that the money for the Students' Aid Fund should not be handled twice so recommend that the Standing Rules covering this subject be changed to the wording in use before the Convention 1920—that is—Standing Rule 44 Under duties of the Corresponding Secretary be added—section 5—"To send to the Chair-

man of the Students' Aid Fund, one dollar (\$1) from each initiation fee within one week after initiation together with the date of initiation." Standing Rule 47 Under duties of the Registrar Section 6 be changed "Upon initiation or affiliation of members, to prepare for each initiate or affiliate two typewritten cards containing data as specified in Standing Rule 50, one to be placed in the chapter card catalogue roll, and the duplicate to be sent to the Grand Registrar upon receipt of which certificates of membership shall be sent to the new members.

RITUAL

The Committee on Ritual recommends:

1. That the ritual of all Grand Officers be revised.
2. That a ritual questionnaire be sent out next fall asking if rituals are up to date.
3. That a model initiation be held at next convention.
4. That the Grand Registrar instruct chapters as to which portions of the ritual are compulsory.

AUDITING

The Auditing Committee reports that the treasurer's books have been audited by Mr. William M. Baker of the Plainfield Trust Co. and that the books of the chairman of the philanthropy committee were examined and found correct.

The Committee on Resolutions recommends that the Grand Council of Kappa Kappa Gamma

1. Extend thanks to the Denver Alumnae Association and Beta Mu chapter for their hospitality during Council Session.
2. Extend thanks to Mrs. Richard H. Goddard for her invitation to luncheon.
3. Extend thanks to Mr. and Mrs. Frank A. Kemp, Jr., for their thoughtfulness and hospitality during our stay in Denver.
4. Express their thanks to Miss Gladys Dixon, Pi Beta Phi, for her invitation to hold Council Session at Camp Panhellenic, Michigan.
5. Express their thanks to Professor Berwald for the Kappa waltz.
6. Thank Madame Fischbacher for her excellent handling of the relief work at Bellevue-Meudon.
7. Commend chapters having members of Phi Beta Kappa.

NEW SONGBOOK COMING

Before the new Songbook makes its appearance, I feel that there are many facts in connection with it which are of enough importance to present to the fraternity at this time.

The task of revising the old songs and gathering together new ones is not an easy one. It is a very difficult matter to view the finished product through the eyes of the many to whom the Songbook will go. However, our greatest desire has been to select the old songs and present new ones which we felt would appeal to the greatest number, and also help to carry on fraternity tradition in song. Our sincerest hope is that we have accomplished our aim.

It is with the deepest sense of appreciation that I first mention the chapters who so willingly helped in collecting new songs. Some coaxing was necessary, but finally when the songs began coming in, it was indeed encouraging to see the responses of most chapters. I would like to mention here those contributing songs: Phi, Beta Sigma, Beta Tau, Beta Beta, Gamma Rho, Gamma Epsilon, Beta Nu, Beta Rho, Iota, Mu, Delta, Gamma Delta, Xi, Kappa, Eta, Chi, Upsilon, Epsilon, Beta Lambda, Beta Zeta, Gamma Alpha, Sigma, Omega, Beta Mu, Gamma Zeta, Gamma Beta, Theta, Beta Theta, Beta Xi, Beta Omicron, Beta Phi, Beta Pi, Beta Omega, Beta Kappa, Gamma Gamma, and Pi. We sent out a plea especially for songs with original words and music. The chapters responding to this appeal and the respective number of songs submitted follow: Beta Theta, one; Kappa, two; Mu, one; Sigma, one; Beta Mu, one; Omega, one; Gamma Zeta, two; Beta Tau, one; Phi, one; Beta Rho, three; Pi, one; Chi, one. To these, we owe our thanks.

I may explain here this special request for original songs. When a song is received with original lyrics, which are to be used with the tune of some popular or familiar song, it is necessary first to secure the copy of the song to "censor" the combination of the words and the music to see that the words are adaptable to the type of music. When the adaptability of the lyrics and music is determined, it is necessary to write to the publisher, or owner of the copyright to ask permission to reproduce the music. In most cases the letters are answered with a kind but firm "NO"—regrets expressed, etc. This must be done in every case, except

for the very old songs for which the copyright period has expired. When you think of this being done for every song which is accepted, you may readily see the value of having original songs, not because of the work involved, but because only rarely is such permission granted, and thus the songs contributed have to be excluded.

In connection with the use of copyrighted music, I am reminded of another matter which I would like to explain. Of course, every one is familiar with the songs *Not Your Key*, *Oh Kappa* sung to the tune *Not Because You're Fair, Dear, If You Ask Us Why We Love You* to the tune *Just My Style*, and *The Call* sung to the tune of *The Gypsy Love Song*, which were published in the 1916 Songbook. In preparing a list of songs from the 1916 Songbook which I wished to repeat, I wrote to the publisher of these songs for permission to repeat this music in our next edition (a technicality which is also necessary). Permission was withheld for, in answer to my various letters, I learned that, since the publication of the last Songbook, there has been formed an organization known as The Music Publishers Protective Association. Many of the leading music publishers belong to this association, and presumably, by mutual agreement, no permission is now given by these members to reproduce ANY copyrighted music. The publisher of the above mentioned song is a member of this association, and thus the music to these songs will have to be excluded, much to my regret as I know they are great favorites. I want to assure the fraternity that everything possible was done in this connection, and failure was not due to lack of effort.

Also, our much-loved song *My Little Kappa Lady* met the same fate. The song is sung to the air *My Little Java Lady* which I doubt if many recognize under that name. Although the publisher withheld permission to reproduce the music, yet knowing how familiar the air is to most Kappas, I am publishing the words to the song in the new Songbook. There are some few other songs which, for the same reason, are being published with the words only. The selection of these were made with the utmost care, including only those songs which are to be sung to airs familiar to practically every one, and lasting in their appeal.

I sincerely hope that the chapters do not feel that, with the publication of the new Songbook, the task of collecting songs is

over. It is planned to collect songs each year with a view to having other songs on hand for publication when we find it necessary. It has taken longer this time to publish the book, because a complete canvass had to be made for new songs, and I feel that if songs are collected from year to year, and held for the next edition, the greater part of the work in connection with publishing a new book will be facilitated.

In passing, I would like to say that order blanks for the new Songbooks are being issued to all chapters, clubs and alumnae associations, and upon receipt of these, I ask that they be filled in and returned to me at once, if possible. Individuals, not at present affiliated with any chapter, club, or alumnae association, desiring copies of the book, may send their orders to me direct.

Finally, I wish to thank all members of the fraternity who in any way have contributed toward making possible this new Songbook, and it is my sincerest hope that, as a result of much effort, the finished product will prove a source of some pleasure to all Kappas.

CAROLYN MCGOWAN.

WHAT XMAS CARDS DID

This letter tells of Madame Fischbacher's great joy when she received the money which we earned by last year's Christmas card sales. It was worth our while, wasn't it?

4 rue Obeuf
Meudon-Bellevue
(Seine-et-Oise)
France

Dear Friends:

I cannot express the deep joy and gratitude with which I received the news of the splendid gift that the selling of the Christmas cards allowed you to send to your little adopted nephews in Meudon!—I had been very concerned, all the fall, with the situation here: the children *are* coming to the "Dispensaire" in greater number every month, and the very moderate expenses increasing accordingly; of course the medical advice, or even the nurse's care doesn't cost much. But there are some cases in which it is no use to say a sickly child shall eat eggs and drink milk if you cannot help his mother to buy him some (milk did cost 26 sous a litre this winter in Meudon, and a fresh egg *one* franc)—or to advise a little chap with a bad cough to keep his feet warm, if he has holes in his shoes and no possibility to get new ones, at the tremendously high price they still cost here! The sending to the country of delicate or pre-tubercular children also costs a great deal more than it did even a year ago—and still there are cases in which some months of country life, good air and good food are the only way to reestablish the health, and sometimes save the life of delicate, underfed little ones. This part of our budget is the heaviest of all, and when the 2,192 francs which were the amount of it for 1920 had been paid, I did not know any longer what was to be done: either to take some of the money the revenue of which is to insure the regular expenses of the Ventiaire and the Dispensaire (and I hated to do it, for I am sure that we all agree in our wish to have the work a *permanent* one, with a regular financial basis)—or to diminish some of the



INTERESTING GROUPS OF OUR FRENCH FAMILIES

more necessary expenses which the winter and the severe labor-crisis made of immediate need. Our anxiety was so great that we even decided to suppress the Christmas entertainment which had been such a joy for our little ones the three precedent years, and to keep all our money for immediate assistance.

At this time a letter from Wm. Kemp arrived, bringing us a draft for \$56, sent by the chapters of Detroit and Milwaukee, and specially intended to "give a Christmas party" to the children. This, together with a personal gift of Dorothy Canfield Fisher, made it possible to offer all our little ones not only a bright, happy day, but some food (sugar, jam, biscuits, chocolate) which allowed them to keep for a few days more, the delightful feeling that *they had their part* in the general happiness and that some far-away aunties had prepared it for them.

And now there is this splendid, nearly incredible gift of \$1,321.72 which will relieve us of all immediate anxiety and allow us to give, without any hesitation, all the necessary help!

I was not in Meudon, when Mrs. Kemp's letter reached me with this blessed good news—but away for a trip in a little Basque village where Dorothy Canfield Fisher and myself had been busy together in 1918, managing a little Home for Children where several of your adopted wards of Meudon had found a resting place during the last months of the war, when the bombardments and German advance made it necessary to take them away from Meudon. I was rather tired, rather concerned about the general state of things (which at the end of the winter, did not seem very encouraging) and in particular about the state of things in this little part of the big world which is especially mine—and *yours*—and where it seems to me that we have been, for years, working together. What was to be done in Meudon? Would it be possible to go on with the work and let it live and develop, as it wanted to or should we have to shut our doors to all newcomers and let the work fall, after a few years, as so many good, well-begun organizations have fallen? I thought of the little ones, of the mothers for whom the "American Comité des Kappas" has been for three years now, a blessed Providence, and it did not seem possible to abandon them. And then the answer came, contained in this letter, and this gift giving us the best assurance that, though the years pass on, and the time when the Stars and Stripes

were seen everywhere in France is growing farther away, the American aunts of the Meudon-Bellevue children remain true and loving to them. I read the letter twice and my joy was so great that I could not keep it all by myself, in a little room. I put on my bonnet and went down to the sea-shore, the big gray ocean, rolling from this little part of the Golfe de Gascogne to America. I thought of all the friends whom we will never meet and who live there, and then of little Madame Labou, with her thin face and six beautiful children—of little Paul Raoux who is recovering his health in a sanatorium—of Maurice and Raymond Fleury, war-orphans, who were brought to us one day when there was nobody left to take care of them—of Madame Colé who would not have recovered after the birth of her fifth child, if it had not been for the help of our nurse and doctor—and many, many others. I realized *what your help meant for every one of them*. And—though it is true, it seems rather foolish to say for a “grown-up” as I am, I felt very near crying for joy, and thankfulness.

With best thanks to every one of you,

Yours sincerely,

MARGUERITE FISCHBACHER.

NEW CHAPTER GREETES YOU

Gamma Iota chapter was installed at Washington University, St. Louis, Missouri, on September 10. This is their first chance to say "How-do-you-do?" through the pages of your favorite magazine.

Sisters of Kappa Kappa Gamma:

We of Gamma Iota, the youngest chapter of Kappa Kappa Gamma, take this opportunity to express our gratitude and appreciation on being welcomed so enthusiastically into the fraternity.

We will strive to prove ourselves worthy of the honor and obligation that Kappa has conferred upon us. As wearers of the key we promise to work faithfully to maintain on the campus of our university the ideals that the little emblem symbolizes.

We want to express our heartfelt thanks before the whole fraternity, to the St. Louis Alumnae Association, whose members have worked tirelessly with us and for us, not only in petitioning for our charter but in helping to solve countless problems of a local nature; and to Theta chapter of Missouri University, whose interest in us has made us eager to introduce Kappa at Washington.

KATHERINE ATWOOD, *Gamma Iota.*

MEUDON CHILDREN POSE FOR KAPPA



This suit was given by the Kappas for confirmation and the child had his picture taken especially to send to the Kappas in America.



Famille Boueher
Andréé, 13; Valeie, 11; War Orphans



Jeanne Phulpin
Dress Given by Kappas

ANOTHER PLEA FROM FRANCE

Dorothy Davy Gross is working in the devastated district of France in her "jardin d' enfant." Mrs. Gross is a California Kappa and was alumnae officer from Kappa province at last convention. Here is part of her recent letter to Mrs. Kemp.

Mme. Fischbacher's work is so admirable that I feel it *must* continue—but I *do* feel that she does not need *all* the money that we are sending her. And if I could but make my plea strong enough you would see how much good a little money would accomplish here in the midst of this devastation.

I am here at Anizy in charge of Foyer—a social center as it were—and here I have classes in sewing for little girls, a class for young girls in English—sewing for the women, and dances for all the village people. On Thursday and Sunday we have "open house" and all kinds and all ages are entertained by games and handwork, etc.

But my keenest interest just now is centered about a jardin d' enfant which I am going to open the last of this week. It is to be a kindergarten for children from three to eight years, and as well as being very constructive for the children, it will be a great assistance to the mothers who work in the fields.

I must say here that Anizy is in the very heart of the devastated area. There is not a house in this district that has not been built within the last two years, and building in France is so slow and so expensive that many people are still living in *dug-outs* and temporary shacks built of discarded materials. The trees stand leafless like white ghosts and the earth is torn to pieces by great shell holes. Time alone can overcome this great truth, but in the meantime material help can be given the little victims of the war. Of course the committee has sufficient funds for ordinary maintenance, but the extra donations that we have are, in the end, the ones that give the joy to the people. I have in mind this minute a little boy of six who was helping his father in the fields about a month ago and picked up one of those treacherous things used by

the Germans that looks like a small pencil. The heat of his hand caused it to explode and his whole hand was blown off. Of course the necessary medical care is given this child by the committee but had I an extra fund that I might draw upon, I am sure there would be additional comfort that I could offer.

And our kindergarten equipment is meager—had I more of the essentials the results would of course be in proportion.

We are dealing with a group of people, who before the war, were agricultural and self-supporting. Everything has been taken from them and their land has been torn to shreds. And the force which prompts us to help them is that undying spirit of tenacity and comeback, which is the keynote of French character. They can't acknowledge defeat by giving up.

I wish I could give you a description of this devastation. The fields and woods are still filled with unexploded shells, trenches, helmets, dugouts, barbed wire entanglements and war wreckage. They haven't been cleared because the expense of such a task would be greater than the value of the land. And into all this waste the peasant is crawling back with his family.

The tourist goes home and reports that all devastation has been cleared away with the exception of a few areas left as trophies for the "sight-seer"—but when you *live* in the horror of it all you learn the truth.

And so if the Kappas could help the children of Anizy they could never hope to assist in a greater charity.

DOROTHY DAVY GROSS,
Anizy le Chateau, Aisne, France.

American Committee.

OUR KAPPA RELATIVES

LOUISE HOMER, contralto in grand opera, now on a concert tour with her daughter. Aunt of Betty Smith, Beta Iota chapter.

PRESIDENT HILL, of the University of Missouri. Father of Jessie Hill of Theta chapter.

CHANCELLOR STRONG, head of the University of Kansas. Father of Evelyn Strong Classen of Omega chapter.

DR. HUBERT WORK, Assistant Postmaster General. Father of Dorcas Work Bissell, Beta Mu.

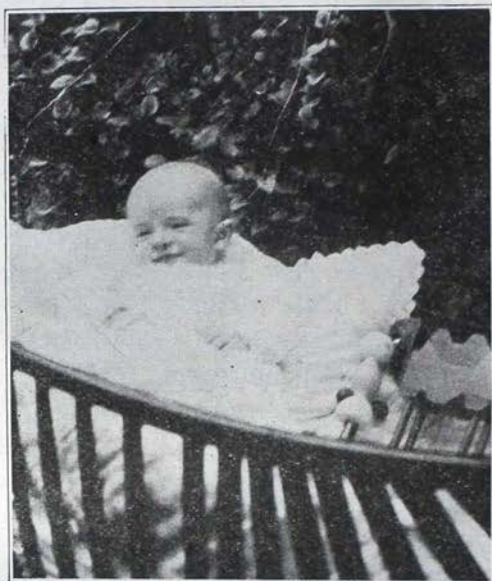
HARGRAVE A. LONG, member of the Board of Archives or governing body of Phi Gamma Delta fraternity. Husband of Marion Thornton Long, Upsilon chapter.

GUY M. WALKER, New York banker and author of *A Defense of Capital*. Husband of Minnie Royce Walker, Iota chapter.

PARKE R. KOLBE, president of Municipal University of Akron. Husband of Lydia Voris Kolbe, Lambda.

GEORGE SMART, editor of *The Iron Age*. Husband of Lucy Allen Smart, Beta Nu.

Send more like these.



FRANK A. KEMP, III

The above is my name. Funny they couldn't think of a new name for me instead of giving me one that my grandfather and father both have. Bad enough to be a "Junior," but land sakes! think of being a "Third." My grandfather, knowing his Latin, calls me "Tert." I think my name sounds like a boat.

They took this picture of me, sitting me up in my aunt Charlotte Goddard's cradle, and put my tinker toy and my camel beside me to keep me from crying. Imagine! To please my mother I smiled, because I knew how disappointed the poor woman would be if she developed the film and found I was serious. She works for hours shaking the tinker toy and the lamp-shade at me to make me laugh. My mother told me to make two announcements:

1. My aunt Mary Rodes Leaphart has twins something like me, only one is a girl.

2. My aunt Lalah R. Warner has a new boy named John Rolin Warner.

Good night!

KAPPAS KNOWN TO FAME

LALAH RANDLE WARNER, *Department Editor*

MARIAN CUTTER

Beta Sigma '10

Some time ago we found out about Marian Cutter and determined to feature her in this department. A few days ago we discovered that the writer of The Gossip Shop in *The Bookman* knew her too, for in the August issue he wrote:

"From there we wandered over to Forty-seventh Street and, picking our way through gardens and flower pots, we found Marian Cutter in her Children's Bookshop. We tried to talk with her; but customers came and went with astounding rapidity. One sweet little widow came in with two children, and arranged for a certain number of books each month. One gentleman came looking for the best new boy's book. The children were quickly engrossed in poring over books on the shelves, and while Miss Cutter wasn't looking, I slipped out with the strong determination to return soon again to this spot where there is so much to be learned about what children are reading and what they should read."

And here she is for Kappa readers to become acquainted with. Drop in to see her some time. Isn't she doing a fascinating thing?

Over a little shop on 47th Street, just off Fifth Avenue, New York, is a very attractive black and white sign which reads "CHILDREN'S BOOK SHOP." You step in from the street and after passing down a short hallway open the door and walk in. Softly shaded lights, convenient tables and chairs, an attractive settle and quantities of the most fascinating children's books are there to greet you, and over in the corner at her desk sits the clever owner of the shop—MARIAN CUTTER.

Those of us who knew Marian well in college always realized that she would eventually do something original—and she has not disappointed us. Starting as a children's librarian in a large branch of the Brooklyn Public Library, she is now the owner of the only book shop exclusively for children in New York.

However she did not wait for the idea of the "Children's Book Shop" to demonstrate her claim to originality, for during her vacations in 1914 and 1916 she went to the Grenfell Mission in Labrador and established libraries there for the children. Inci-



MARIAN CUTTER WHO HAS THE CHILDREN'S BOOK SHOP

dentally on her return from one of these trips her boat was torpedoed by the German U-53 off Newport.

From the Brooklyn Library she went to the Bridgeport, Connecticut, Public Library to organize the children's work there. This she found most interesting as it was largely Americanization work.

In 1919 she opened the "Children's Book Shop"—the idea being to get the right book to the right child. She enjoys having the children come to make their own selections and she says that it is an interesting fact that the children of better homes who have always depended on gift books need much more help in making their choice than the poorer class children.

Parents, too, delight to come there and use the shop as a study, where they may look over the books very thoroughly and make wise selections suited to the individuality and taste of their children. They also appreciate the fact that they have the advice of a trained children's librarian to aid them instead of having to depend on the advice of the shop-girls in the department stores.

Any Kappas who are in New York will always receive a cordial welcome at the "Shop."

GRACE BROADHURST ROBINSON, *Beta Sigma*.

CLARA KELLEY BURNSIDE

Iota ex-'97

Did you know that Kappa has one of the few police captains in the United States? Organized in 1918, the policewomen's unit of the Indianapolis police force began with twelve, now has increased to twenty-four, with Clara Burnside, Captain, as head. New York, Chicago and St. Louis have policewomen on the regular force. Washington and Seattle have smaller units and Detroit is organizing. The Indianapolis unit has won praise from ladies that considered it a fad and opposed its organization. And this has been brought about by Clara Kelley Burnside of Iota. Read about her and her splendid work.

It is a great honor to Kappa to have one of her daughters pioneering in a field offering opportunities for such a high type of social service as the Department of Policewomen at Indianapolis, Indiana, affords. That honor belongs to Clara Kelley Burnside, an Iota Kappa.

Miss Burnside was born in Indianapolis, but her family moved soon afterward to Liberty, Indiana, where her girlhood days were spent.



CLARA K. BURNSIDE, CAPTAIN OF POLICEWOMEN

In the fall of 1893, she entered DePauw University where she became a Kappa. She spent two years there majoring in mathematics. At the end of that time the call to social work overbalanced the mathematical inclination and she came to Indianapolis. She was connected with the Charity Organization and other agencies until 1903 when the Marion County Juvenile Court opened. She then became an officer of the court, having charge of the girls' work.

In the spring of 1918 there was felt by city officials in Indianapolis a strong need for policewomen. This need was largely due to conditions arising in connection with the large army camp just outside the city, Fort Benjamin Harrison. In searching for a woman capable of heading such an organization, Miss Burnside stood out clearly as an excellent candidate. She was appointed Supervisor of the department and given the rank of sergeant. She organized her department in June, 1918, with twelve assistant officers, one of whom was appointed as special investigating officer, one who looked after the clerical work, spending her entire time in the office, and ten district women.

The women were given office quarters in the Police Headquarters building, and while they co-operate at all times with the various mens' departments, Miss Burnside is subject only to the Chief of Police. The primary work of the department is the protection of women and girls and is largely preventive in character. Few arrests are made in comparison with the large number of cases handled.

As the work has developed, the size of the department has increased until today there are twenty-four officers; Miss Burnside, who continues as Supervisor, was advanced in rank to Lieutenant in August, 1920, and to Captain in March, 1921. Her assistants are a Lieutenant, who is assistant supervisor, a Sergeant, two investigating officers, two clerical officers, three city prison matrons, and fourteen district women, ranking as patrolmen; who are responsible for looking after conditions in public places frequented by women and girls in the congested downtown districts; these include department stores, moving picture shows, dance halls, restaurants, drug stores and depot waiting rooms.

Having myself assisted Miss Burnside as an investigating officer of the department for a year, I can speak in a very personal

way regarding her relationship with members of her staff. She is an excellent type of executive; she not only keeps a vision of the entire departmental work before her but is familiar with the details of every case on which her assistants have worked. There exists the utmost freedom between her and her sub-officers, and this insures splendid co-operation in working out the best course to pursue in each case.

Every one of the officers working under Miss Burnside's direction loves her, respects her, and is absolutely loyal to her. She also has the sincerest admiration of workers in other social agencies of the city and state. She has been for some time a woman of national reputation, and just last June at their conference in Milwaukee, Wisconsin, was elected secretary of the International Association of Policewomen.

Throughout all of Miss Burnside's career as a police officer, she has retained that quality which we all covet, a sweet gentle womanliness and feminine beauty of character. She has a big heart and a sympathetic nature which win the confidence of even the most hardened girl of the streets, and a kindness in guiding her along a better path which assures her continued respect and admiration.

VERNA SWEETMAN MENDENHALL, *Mu.*

KAPPAS IN BOOK AND MAGAZINE

LALAH RANDLE WARNER, *Department Editor*

BOOKS

The Brimming Cup by DOROTHY CANFIELD FISHER, *Beta Nu* and *Beta Epsilon '99*, Harcourt, Brace and Company, New York, \$2.00.

It seems entirely unnecessary to print at this late date a review of *The Brimming Cup*, by Dorothy Canfield. Brief mention was made of its publication in the April issue of THE KEY and its popularity has been so great that surely no Kappa can have missed it. It is at this writing in its sixth edition and has been for months the second best selling book in America. In the estimation of the editor of this department it ought to be the first, for to her notion it is equal in literary merit to *Main Street* and far surpasses it in sanity, wholesomeness and verity. But then this editor is rather tired anyhow of morbidity, pessimism and sordidness being advertised as Realism. To be sure there is sorrow in the world and disappointment and there are fools, too; but, praise the Lord, there are also sweetness and happiness and courage and nobility.

This editor and her husband read *The Brimming Cup* aloud from cover to cover and when they got through they felt warmed and blessed, as they do not always when they finish a novel. And they wrote and told Dorothy Canfield so. And she replied in a letter that is as fine and gracious and charming and simple as *The Brimming Cup* is. Have you ever noticed how unaffected and simple *real* greatness usually is? Well, it is—and the book will cheer your soul.

Incidentally, Dorothy Canfield Fisher has just been appointed by the Governor of Vermont as one of the five members of the State Board of Education. She is the first woman ever to have served in that capacity in the state and the appointment is for five years.

PAMPHLETS

What Should Be Expected of the Teacher of English, by LOUISE POUND, *Sigma '92*, Professor of English Language in the University of Nebraska. Reprinted from *The English Journal* for April, 1921.

The Use and Abuse of the Contemporary in the Teaching of English, by LOUISE POUND, *Sigma '92*. Reprinted from *School and Society* for April 9, 1921.

MAGAZINES

Manslaughter, a serial by ALICE DUER MILLER, *Beta Epsilon '99*, in *The Saturday Evening Post*, beginning with the issue for August-6, 1921.

An Understanding Heart, a story by MARIE BEYNON RAY, *Beta Sigma*, in *Harper's Bazaar* for September, 1921.

EDITORIAL COMMENT

The engagement is announced of our Grand President, Sarah B. Harris and Richard Yates Rowe of Jacksonville, Ill. Mr. Rowe is a member of Delta Kappa Epsilon, University of Chicago.

BACK NUMBERS OF KEYS WANTED?

Remember that your chapter will probably be "officially visited" this year by a Grand Officer or your Province President. One of the first things she will say as she looks with a stern eye upon your archives is "Are your KEYS bound?"

If you need any back numbers of KEYS to complete your files, write at once to Mrs. Kolbe the business manager. She says she has on hand KEYS of the following dates: October, 1918, December, 1918, October, 1919, December, 1919, May, 1919, February, 1920, May, 1920.

COUNCIL SESSION

You will get some suggestions if you will read the minutes of Council Session which we have printed in this KEY. Read carefully the recommendations to chapters, and if you are an alumna reader, the reports on alumnae and Panhellenic affairs will interest and instruct you. It is expensive to print the minutes in THE KEY, but we want everyone to read them.

COLLEGE SPELLING

The mile-high snap in the Denver air lost its customary invigorating qualities the night the editor read all the chapter reports looking for Phi Beta Kappas. It was gratifying to find twenty-seven of these honor students, which is a record, but in this search it was depressing to find the following careless mistakes in spelling made by the girls who wrote the reports for their chapters.

Shed a tear for education in general when you learn that: Beta Sigma twice mentions a *sorority*, and her *commitee*.

Beta Iota has some *atheletic* members in her *shapter*.

Beta Upsilon is interested (twice) in *scholorship* and has some *alumni* members.

Mu calls it *scholarship*, and
Beta Zeta guesses the spelling of the mysterious thing as
sholarship.

Gamma Alpha's typewriter may have slipped when she wrote
pan, hellenic.

Gamma Beta is a *surority*.

Theta doesn't believe in the singular of women—a *women*, she
writes; and *corperation*.

Beta Kappa, we learn, has *alumni*.

Sigma, although it has one, thinks that the honor fraternity is
Pi Beta Kappa.

Beta Tau and Beta Xi did not see the large instruction at the
top that the report should be typed, and sent theirs in script, and
Eta's theory was "half-typed is better than none."

STUDENTS' AID FUND STATEMENT

Contributions as follows are gratefully acknowledged:

Eta chapter	\$100.00
Iowa City Alumnae Association	25.00
C. S.	1.00

Applications as follows have been approved:

Member of Beta Tau chapter	\$150.00
Member of Beta Mu chapter	500.00
Member of Beta Theta chapter	600.00
Member of Beta Theta chapter	200.00
Member of Beta Theta chapter	100.00
Member of Beta Kappa chapter	500.00
Student at Purdue University	300.00

Active chapters and Alumnae Associations are urged to pay off their
convention pledges as soon as possible.

KAPPA KRISTMAS KARDS

An education to girls who might otherwise never acquire one; food, clothing and strength to our little French children; and a merrier Christmas to thousands of friends: all these await the success of the second Christmas Card Campaign.

The fraternity's philanthropic fund needs the assistance of all the chapters and alumnae associations and is worthy of individual effort by every member. It is our opportunity for concerted service for others. We all glory in it and share in the honor from it, and each of us should do her part to aid in its accomplishment.

You will remember that last year we sold nearly 56,000 cards, Beta Zeta leading the chapters by selling 2,000 and the Association at Detroit heading the Alumnae Associations with 2,000. Last year the fraternity received one-half of the net proceeds after the deduction of the cost of mailing the cards.

When the chapters voted to sell the cards again this year the Council determined to do everything in its power to make the sale easy and the results sure. Sample cards were requested from different engravers and a committee was appointed with power to make a selection with a view of obtaining the most attractive cards and the greatest possible value.

The cards chosen are novel in design, varied in color and are really beautiful. This year the fraternity is to receive a full one-half of the proceeds, the engraver agreeing to pay the cost of mailing.

Last year we sold 56,000 cards. Can't we sell 60,000 this year? Mrs. Goddard, the chairman of the Students' Aid Fund, says we must raise over \$4,000 to keep pace with requests for loans from wholly worthy girls.

We appeal to every member of the fraternity actively to help this campaign. If you will spend but a few hours at the right time (before every one has bought his cards), the results will be astonishing. Surely there are few of us who have not at least a dozen friends who would be really glad to buy attractive cards to aid this work. It is as easy and pleasant a way to raise money as could be devised and we need your help.

The success of one of our really big undertakings depends in part on this campaign. Will you help?

Mrs. F. A. Kemp, Jr., 135 Grant St., Denver, Colo., is chairman of the committee and all communications should be addressed to her.

E. K. K.



HOOTS



HELEN BOWER

TRY THIS FOR A FRESHMAN PARTY.

Society item in a Texas paper: "A merry crowd had their supper at Scenic Point, enjoying the beautiful sunset, and the walk home by the railroad track afterward. Those in the party were—" etc., etc.

F. M., school-teaching in our fair state, reports that one of her brilliant charges informed her in an examination paper last June that the "Knights of the Round Table set out in search of the Holy Grill." Shades of St. Lawrence!

VACATION NOTES (Oh! Helen!)

We've been saving this one for more than a year, having had the letter too late for last fall's "HOOTS." It would be better, though, if we dared mention the name of the enthusiastic Kappa who described a place she visited after convention, where in front of their delightfully located cottage was a mountain brook "full of trout rushing by, noisy as the ocean." You can just imagine the racket those trout made, pounding their scales together and piercing the silence with their fins—loud, noisy fish that they were. Without a doubt they made the writer long for the quiet and calm of a snug little corner under the "EL," of the peace of Forty-second and Broadway—poor, homesick darling!

Alumna, rated "hwf" in the K. K. G. directory: "I suppose this region is rich in old legend?"

Native of Gloucester, Mass.: "Yes, ma'am! They say my great gran'pa bought three dozen eggs down street once fur fifteen cents."

Page the Greek Exchange! In the Detroit telephone directory there's a subscriber named Sigma P. Kappa, and he isn't a fraternity house, either.

NURSERY LEGEND.

Project yourself into the not-far-distant future and "listen in" upon this touching scene in the Kemp household, where Mother is trying to give her small son some foundation in the fractious fractions.

"One-half of one is one-half," says she, deftly cutting an apple in two. "Remember, dear, that half of anything always leaves one-half."

The lesson finished, Sonny departs for the play-room, whence he emerges fifteen minutes later registering woe and disillusion.

"Mother," he wails mournfully, dangling a string with an indeterminate limp object at the end. "Mother, you said half of anything leaves one-half, but I tried it on my balloon and it didn't work." —Q. E. N. D.

"Do you think that we ought to have more battleships?" asked the earnest young man.

"I certainly do," responded the California Kappa, with fervor. "I went to navy dances all summer and there were nothing like enough battleships to furnish lieutenants for the girls who wanted to dance."

ENGLISH DEPARTMENT.

Garage sign snared just off Notre Dame Street in Montreal, Canada: "Care your auto with a Responsible men."

Bona-fide item received by a certain newspaper: "Mr. and Mrs. Charles Jatros returned of there eastern cities honeymoon will resintince at 2006½ West Grand River."

We're all interested in knowing how to get, be, and remain beautiful—or what have you—so Mary Garden's advice is always of moment. Today's pleasant thought is that Mary believes in breathing—deep breathing; in fact every morning and night, no matter how tired she is, she practices breathing exercises. She practices them in her motor car, on trains, in her office. "I was at a luncheon of women not long ago," said Mary, "and I was very bored. The talk was piffle. So I breathed and the time was not wasted." Of course, if Mary had just neglected to breathe for a little while, she would have wasted her last minute on earth, all right.

HOT WEATHER STORY

(M. V. A.'s Favorite)

"I want to have a plain soda, without any flavor."

Drug clerk: "Well, without what flavor? You gotta have it without *some* flavor, y'know."

"All right! Give it to me without chocolate. A plain soda without chocolate flavor."

"You can't have it without chocolate, either. We're all out of that. You'll have to take it without vanilla." Clerk wonders why customer faints.

"LAST THE BEST OF ALL THE GAME"

Hoots is awfully proud and set-up, because it has gained the distinction of having had a real, honest-to-goodness contributor, aside from the genial sisters in the old home town, who are nice enough to lighten the burden, if any, of column conducting. But this distinguished contrib. actually thought enough of us to write a note and expend two cents for a postage stamp and mail it to us from another city, which we hope will be done likewise

by others, if they feel a funny remark coming on. Our address will be furnished free of charge, gratis and for nothing upon receipt of a stamped, self-addressed envelope.

Anyway, L. V. K. greeninks to us that she is sure we can give a "Hoot" or two over the very enlightening business of the official chaperon from one of the chapters, as related in the chapters annual report.

"Who wouldn't be a chaperon with such weighty duties as follows: 'The main duty of the official chaperon is to stop dancing at eleven thirty.'"

Say we, "On with the dance, let rules be undefined!" And we also predict an unprecedented rush for position as Kappa chaperons. . . . But don't forget about contributing. It's going to be a long, cold winter, and charity begins at home, you know!

THE ALUMNAE

ESTELLE KYLE KEMP

DO YOU?

Do you attend alumnae meetings and by your energy and enthusiasm help to make your association a working force in the fraternity and in the community in which it is situated?

Do you keep up an active interest in your chapter through visits, letters to the chapter or younger alumnae, or by reading its letters in *THE KEY*?

Do you help your chapter financially if it is buying a house or raising a house fund?

Do you take an interest in its chaperon and encourage her to promote its mental and social standards?

Do you take an interest in the chapter's management so that you can give advice when it is needed?

Do you know your chapter's scholastic standing?

Do you encourage better scholarship by knowing what girls are good students and commending their success?

Do you take an interest in the nearest chapter if your own chapter is far away, and try to help it as you would your own, and in so doing strengthen the whole fraternity and incidentally your own chapter?

Do you read *THE KEY* so that you will know what the fraternity is doing?

Do you know about the Students' Aid Fund? Are you doing anything to help worthy students through college by supporting it financially?

Do you help make the national work of the fraternity international by taking an interest in the Bellevue-Meudon Dispensaire?

Do you keep in touch with the trend of fraternity thought? Do you know about Endowment Funds, a salaried officer, a central office?

Do you take pride in your fraternity and give it thought and effort?

BELLEVUE-MEUDON FUND

I wish to acknowledge the following generous gifts to the Bellevue-Meudon Dispensaire:

St. Louis Association.....	\$ 10.00
Cincinnati Association.....	25.00
Detroit Association.....	125.00
Boston Association.....	10.00
Los Angeles Association.....	25.00
Portland Association.....	30.00
Cleveland Association.....	75.00
E. K. K.	

OUR DEBT TO THE CLASSICS

How many of us who are Kappas realize what college women and especially fraternity women owe to the classics? Men prominent in public life have time and time again questioned the superiority of the classical education in preparatory schools and colleges. Business men and financiers have said that they must see the value in terms of dollars and cents. It is unfortunate that science and the humanities do not seem able to go forward peaceably, hand in hand. Yet it is well known that of the world's greatest scientists many have upheld the need of Latin and Greek as a vital part of training for right culture.

Some time ago Dean West of Princeton stated that "too many American schools furnished educational lunch-counters." This we all know to be true. The terrible realization comes especially after college when one looks back on the dabs of knowledge gleaned here and there over a too generous choice of fields.

"A little learning is a dangerous thing,
Drink deep, or taste not the Pierian spring."

Kappas are pledged throughout the land to cherish the highest ideals, the truest culture—in one great accomplishment, namely, the raising of the tone of girl college life throughout the country. Our fraternity entrusts to each one of us a small but important part of a great task to set a higher standard in college and wisely represent college and fraternity after Commencement Day.

A college woman's personality stamps her college and associates before a friendly but critical world. A woman when imbued with the vitality of the classics and steadied by the gracious spirit of duty toward others is well equipped to follow any chosen career to a successful conclusion. Even a few years thorough study of the ancients may build up within us the great secret of personality—fraternitas. Carlyle tells us that sympathy is the safeguard of the human soul against selfishness. So in this materialistic world today, shall not we as Kappa and college women fight for the inherited right of all students to study what should give them a sure footing in their careers—the classics.

MARY BOYD ELSASSER,
Philadelphia Association.

KAPPA SPIRIT

It is twenty-five years since I entered the University of Nebraska and became a member of Kappa Kappa Gamma, and I have tried to analyze to myself what it is that has made me loyal through all these years, kept up my interest in the welfare of Kappa, and caused an extra throb of pride whenever I have seen the golden key, at home or abroad; and why is it, that now when my own daughter is starting her college career, I would rather she be a Kappa than anything else.

I can only say that there is an indescribable something which we call "Kappa spirit" that is instilled into each one of us as we carry on the fraternity work and form our ideals, during our undergraduate years, that becomes so much a part of us, that we are willing to give of our time and energy and money, as the years go by to help keep up the standards of the fraternity.

To gain this "Kappa spirit" it is necessary to emphasize all through the chapter the fact that each member has a responsibility, not only to her chapter, but to the fraternity and that the success of the whole organization is dependent upon the attitude of the various chapters which go to make up Kappa Kappa Gamma.

As we approach another convention year let everyone, active and alumnae alike, think and talk convention. There can be no more profitable vacation trip than one which would include the Kappa convention, and let those who can go bring back to those less fortunate the inspiration thus gained, and so help to develop

that national consciousness, which is necessary for a full realization of the significance of Kappa Kappa Gamma.

ADELLOYD WHITING WILLIAMS,
Lincoln Association.

BOUQUETS FOR E. AND C.

As our scattered members have not returned from varied vacations—an experience of mine, with a reflection or two, must appease you, this time.

Traveling westward in June, it was a delightful experience to spend an evening in Denver with our Grand Vice-president, and our Chairman of the "Students' Aid Fund." One felt that although strangers until this meeting, there is something very real in "the tie that binds." A privilege to be coveted for members of all our alumnae associations (as well as active chapters) would be an occasional glimpse of our Grand Officers. Our local meetings and our interest often lag when there is not the urge of a nearby chapter to spur us on to deeds and doings. We are engrossed in our children, our civics, our charities.

But one enthusiasm usually begets another, and this eastern Kappa was much—very much impressed with the time and thought, which these two western officers are giving devotedly to Kappa's interests, and hopes to be able to pass on to her associates at home, a reflection of their zeal. May I say how much I liked them both—just for themselves—too?

And from the alumnae standpoint, these two women officer the two splendid philanthropies, which are our best reasons for supporting associations. Shall we not all work harder than ever for the "Students' Aid Fund" and the Bellevue-Meudon children?

FLORENCE LOWRY SCHIEFER,
Western New York Alumnae Association.

THE UPPERCLASS PLEDGE

"I hope the girls will like my niece," said a Kappa sister to me. "She is such a quiet little girl and her retiring manner does not help her to make friends easily. It takes time to really know her true worth, and in the hurry and excitement of the first few weeks of college I am afraid my little niece will not make a strong impression at the Kappa house."

We talked for some time about the problem of pledging. We are no longer active members of the fraternity, but as the fall term of college approaches we find that we are still interested in fraternity affairs. After I left my friend, I walked slowly home thinking of the many things we had talked about. I recalled college girls I had found to be most worth while friends and thought how true it is that the friends we learn to like best are not always those who impress us most on short acquaintance.

After the parties are over and the many happy girls are proudly wearing their pledge pins, did you ever stop to wonder how many girls were made unhappy because they had not been considered the fraternity type? Some girls allow this disappointment so to overcome them, they return home feeling that something is wrong with them. They imagine they are undesirable and unattractive. But after all it is the worth while girl who can overcome this disappointment, remain in college, and prove to be a real credit to her institution.

I am thinking of a girl who to my notion is one of the most worthy girls who ever wore a Kappa Key. She was not pledged her first year in college. She found after meeting the many girls of the different fraternities she wanted most to be a Kappa. But she did not receive an invitation. She felt the disappointment keenly but she went quietly on her way, slowly making friends, and taking an active part in college affairs. In her sophomore year she was asked to become a Kappa pledge and the girls were happy and proud to have her accept the invitation.

Think not on Yesterday, nor trouble borrow
On what may be in store for you Tomorrow
But let Today be your incessant care,
The past is past, Tomorrow is in the air.
Who gives Today the best that in him lies
Will find the road that leads to clearer skies.

—JOHN KENDRICK BANGS.

NADIA DUNN CORLY,
Manhattan, Kansas, Association.

BOSTON ASSOCIATION

Florence MacArdle, '12, has been appointed assistant professor in the department of Physical Education at Smith College, Northampton, Mass. Last year she was instructor of physical education at the University of Chicago.

Dorothy Richardson, who was in college during the year 1911-12, was married on June 22 to James T. Croffman, an overseas veteran.

Florence B. Colby, '03, sailed on Saturday, Aug. 13, for Liverpool, en route to Bordeaux, France, where she will visit friends for several months.

Emma C. Shipman, '96, and her sister, Julia, '20, have been spending the summer in England. Julia Shipman has been studying at Oxford.

Our June meeting was held at the home of Mrs. Martha Strang, our senior executive, and we certainly appreciate her ever gracious hospitality. A goodly number of alumnae were present, and our only regret was that only one member of the graduating class was with us. The weather was perfect and we all enjoyed our luncheon under the trees.

GENEVIEVE ELDER.

BETA IOTA ASSOCIATION

Eleanor R. Runk announced her engagement this spring to Mr. James Reppert of Virginia. They will be married October 19.

Charlotte M. Goette was married June 1 to Wallace M. McCurdy.

Ethel R. Young was married June 25 to Mr. Paul H. Taylor of Philadelphia.

Dorothy Thomas, who will be married October 8 to Mr. Richard Talbot at Swarthmore, Pa., is traveling in Europe this summer. Her bridal party is to be made up of Kappa classmates; maid of honor, Eleanor R. Runk; bridesmaids, Kitty Belville and Frances Young.

Janet G. Young, Marjorie Kistler, Helen Griscom, and Hope Richardson were counselors this summer at Camp Kearsarge, Naples, Maine.

Helen Spiller Adams is receiving congratulations upon the birth of a son.

Ruth Kistler has been traveling with Chautauqua this summer.

Anne Haines Martin is to be congratulated upon the birth of a son.

FLORENCE A. CORSE.

SYRACUSE ASSOCIATION**MARRIAGES**

Hazel Burdick, '19, to Washington Loveland, June 16. Address 907 Ackerman Avenue, Syracuse, N. Y.

Isabelle Knapp, '19, to Maurice Page Whitney, July 19, at North Tonawanda, N. Y. At home after September 1, at 205 West Chemung Place, Elmira, N. Y.

Violetta Burns, '19, to Leland Lamont Pohl, on May 28.

BIRTHS.

To Miriam Beard Tennant, '19, a son, Charles Beard.

To Channez Burdick Batzer, a son, Bryce Nesbit, June 18.

FLORENCE R. KNAPP.

WESTERN NEW YORK ASSOCIATION

Mildred Lincoln, Beta Tau, '12, returned last year to Rochester's West High School.

Eugenie Cameron, Beta Tau, '13, teaches in Washington Junior High School.

Christina Thorpe, Beta Tau, '15, will teach music and drawing in Rochester Schools this year.

Elizabeth Lowry, Beta Tau, '12, comes to Rochester this fall with the Social Welfare League from the Charity Organization Society of New York City.

ST. LAWRENCE ASSOCIATION

The former joint Alumnae Association of Kappa Kappa Gamma and Zeta Phi has been reorganized since the initiation of the Zeta Phi members as the Alumnae Association of Kappa Kappa Gamma.

At the meeting held in June a committee was appointed to act with a committee from the active chapter to formulate rules for governing the house and for social activities. Very little repair of the chapter-house was found necessary, extensive improvements having been made two years ago. At that time a new heating system was installed, with new plumbing, new floors were laid, and most of the rooms were redecorated. The money for all this—a goodly sum!—was promptly and generously contributed by our alumnae; and we feel very proud of the achievement, as it showed the strong interest and affection which these women, scattered from coast to coast (many having been absent for years), still feel for their chapter.

It was especially gratifying to us that Florence Lee-Whitman, '82, was elected a member of the board of trustees of the University at the meeting held in May. This makes a total of three women now acting as members of that board, all of whom belong to Beta Beta—Lucia E. Heaton, M. D., '79, and Emily Eaton-Hepburn, '86, having been previously elected. Last year, while Mr. and Mrs. Whitman were abroad on their silver wedding journey, Mr. Whitman was appointed a member of the commission for the liquidation of the Bank of Vienna; hence they spent several months in that city. At the last alumnae banquet Mrs. Whitman gave us a highly entertaining account of her experiences. She is spending the summer in Paris, studying French.

Dr. Heaton is also having a busy summer. First, she had the misfortune to break her arm, but, nothing daunted, she, with her brother, John Langdon Heaton, L. H. D., of the editorial staff of the *New York World*, celebrated with appropriate exercises before a large gathering of friends and neighbors the one hundredth anniversary of the Heaton farm, near Canton. She is now taking a vacation trip in Europe with her brother.

Emily Eaton-Hepburn, whose name stands for all good works, is president of the Historical Association of New York and is in many ways an active supporter of women's interests. Incidentally, she is an enthusiastic gardener, and at her beautiful place in Ridgefield, Conn, she exemplifies her faith in outdoor work for women by delving industriously in the soil. The June number of *Good Housekeeping* contains a vigorous and convincing article from her pen advocating the physical and moral efficacy of this form of exercise. An excellent portrait accompanies the article.

A number of our younger alumnae seem to be, like Silas Wegg, "dropping into poetry." Mildred Seitz, '12, has a poem "*The Wanton*," in *Harper's Magazine* for June; Margie Potter, '14, is a contributor to *Poetry*; and the "*Song of the Thrift Stamp*," by Ann G. Sneller, '06, was one of the most popular and widely copied poems of the war.

Nina Roop, '17, was married, August 1, to Carrol Sanders, '17, a member of Beta Zeta chapter of Beta Theta Pi. Her brother, Thomas Roop, '17, of the same chapter, was married in July to Mildred Lalone, '16.

Margaret F. Smith, '19, with commendable promptness, took her master's degree for advanced work in English Literature and Philosophy at Commencement last June. Margaret is the busy and highly esteemed librarian at Skidmore college, and how she finds time to do all she does is one of the mysteries of life to ordinary mortals.

Henrietta Kenne-Hoard, '03—well, it would take a book to tell of all Hallie's activities! Assistant school principal by profession, and as a club woman especially active in the Children's Museum and the Institute of Arts and Sciences, also Secretary of the Department of Home Economics; during the war she served continuously with the Brooklyn office of the Red Cross on the Speakers' Bureau; in 1921 she was made Field Executive of the Junior Red Cross for Greater New York, and became a member of the Women's Committee of the New York and New Jersey Harbor Commission; and finally, on July 21 of this year, she was invited and urged in most complimentary terms by the commissioner and staff of the Bureau of Information, Mr. Eric H. Palmer, director, to become a member of the advisory Committee to meet with the bureau and thus co-operate with the Port of New York Authority. And all this gives no hint of her work in literature!

The relations are most cordial between the girls of the active chapter and the alumnae of the Association; and the latter, realizing the value of such close co-operation, are planning a helpful campaign for the coming year.

GEORGIETTA B. HALE.

PHILADELPHIA ASSOCIATION

The Philadelphia Association is looking forward to a very busy winter. We are hoping to buy property in conjunction with the active chapter as a chapter-house.

Our new officers are: president, Louise Butts; vice-president, Pauline Hart; secretary, Florence C. Pumyea; treasurer, Geneva Groth. Since our last letter, we announce the following arrivals: Donald Lee Thomas, son of Mr. and Mrs. Walter Thomas (Evelyn Hayes); Margaret, daughter of Mr.

and Mrs. Marvin Neeley (Clara Evans). Also, we announce the marriage of Aleda May Ott and John S. Prigge (Kappa Sigma). They will live in Jersey City.

Evelyn Why and Marianna McCauley have been touring through the west in a ford and from all reports, they have been having a fine trip.

Jessie McCulloch is now in the Welfare Department of Hahneman Hospital, Philadelphia.

We hope to increase our membership again this year, even though we had the largest roll in the history of our association last year.

FLORENCE C. PUMYEA,

PITTSBURGH ASSOCIATION

At the last meeting held in May at our president's home, we elected the following officers for 1921 to 1922: president, Mrs. James Burt Miner, 1810 Shady Avenue; secretary, Miss Louise Pennywith, 7045 Williard Street; treasurer, Miss Laura Niebaum, 214 Amber Street. Mrs. Tomlinson and Miss Catherine Foulke were appointed representatives to the active chapter; Miss Clara E. Howard was made senior advisory, and Mrs. Janet MacDonald Flinn, junior advisory member.

We are extremely sorry to state that Mrs. Sherman Conrad (Irene Farnham, Upsilon) has moved to Cincinnati, Ohio. It is indeed a problem to know how we are to manage without her and we envy Cincinnati's good fortune in having one with such exceptional executive ability.

Mary Johnson, Gamma Epsilon, was married to Mr. George M. P. Baird of Pittsburgh, last May. Mary has been in New York for the last three years so we are glad that Mr. Baird has brought her back to the fold again.

Helena Flinn has accepted the position as a teacher of French in Wilkinsburg High School.

Elsie Young has returned to Hopkinsville High School, Kentucky.

MORGANTOWN ASSOCIATION

Our members are returning from far and near after their pleasant summer vacations.

Margaret Buckhannon has just returned from Europe where she has spent the past year studying. She expects to complete the work on her doctor's degree this winter.

Mrs. Higby has returned from Texas where she spent the summer with her husband, who was instructor in the University of Texas.

One of the most attractive social events of the summer was the beautiful wedding of Anagrace Cochran and Clarence Roby. After an extended eastern trip they will make their home in Morgantown.

Edna Miller has taken up her former position in the Fairmont High School after having spent the summer traveling in the west.

Mrs. B. B. Cox and sister, Margaret Rogers, have returned to Morgantown after having spent the summer at their home in Ragan, Nebraska.

Eleanor Moreland has returned from summer school at Columbia and will take up a position in Elkins.

Maud Harper and Jean Billingslea spent the summer traveling with the Swarthmore Chautauqua.

Mrs. Leanna Brown and daughter, Emma are spending a few months in California.

Professor and Mrs. Madison Stathers spent the summer traveling and studying in Europe. They expect to return to Morgantown in early fall.

Dorcas Prichard, Dean of Women, Fairmont State Normal School, was delegate at large at the Annual Conference of Business and Professional Women's Club Incorporated, at Cleveland in July.

BEULAH POSTEN.

MILWAUKEE ASSOCIATION

The Milwaukee Alumnae Association had an extremely pleasant year under the guidance of Mrs. Kachel, our meetings being purely social. Early this summer our newly chosen president, Grace Challoner Burnham, entertained at luncheon for George Challoner Tracy of Peoria, Illinois. Among the out of town Kappas who were present were Ethel Raymer Edmondson, Pasadena, Cal.; Winifred Titus Kowalke, Annie and Jennie Pitman, Madison; Madge Thompson Reed, Oshkosh, and Bess Morrisson Schroeder, Racine. Mary Parkinson, '21, Madison, is engaged in educational work in Schuster's department store in Milwaukee, and we are hoping to welcome her into the alumnae association in the fall. Miss Frank Weeks, Racine, was married on August 15 to Mr. Arthur Porter of Wauwatosa. We are very happy that Mrs. Porter's home will be near enough for her to continue active in our association. Alice Currie Drew, Eta, '08, of Detroit spent a month in Milwaukee with her three children. Miss Jean Currie is to teach at the Ogontz School this coming year.

GERTRUDE SMITH SLOCUM.

LA FAYETTE ASSOCIATION

We are all busy helping the active girls to get everything in readiness for the opening of school this fall—mainly, our new house, of which we are all so proud.

Several new members will be welcomed into our association in the fall.

Margaret Murphy Hodson, '21, who was married in June to Ralph Hodson, Kappa Sigma, of Gary, Indiana.

Leona Burkle, '21, at present hospital dietitian in Indianapolis.

Ada Decker Malott, '16, who is moving here from Cleveland, Ohio. Mr. Malott will be connected with the Purdue Experiment Station.

Marie Schress, who will teach in the Crawfordsville High School this winter.

Among our members married this summer, are Dorothy Orr, '20, to Orville Klendworth, Kappa Sigma, of Crawfordsville, now at home in the Canterbury Apartments, Indianapolis, Indiana.

Eleanor Throckmorton, '16, to Harry Washburn; and in October, the marriage of Inez Richardson to Joseph Cannon will take place. They will reside in Indianapolis.

Dr. and Mrs. Frank Hunter (Fern Nordstrom, '16) are spending a two months' vacation at Lake James, Angola, Ind.

Joyce Minor Ellis spent two weeks at Glen Lake, Wisconsin, with her husband, who was in Summer Civil Camp at that place.

We were all so pleased to have our Grand Secretary, Della Lawrence, with us last spring at our annual dinner party for our active chapter. We wish she could have been here longer.

JUANITA M. FOLLETT.

BLOOMINGTON ASSOCIATION

The Bloomington, Indiana, Alumnae Association held its last meeting for the year 1920-1921 in June at the home of Mrs. Anna Loudon. The seniors of Delta chapter were made members of the Association by the president, Mrs. Nell Teter.

For the coming year the officers are: president, Mrs. Mary Beck Culmer; vice-president, Mrs. Bess Pittenger; secretary, Miss Helen Osthaus; treasurer, Mrs. Leafy Davis Wingert; corresponding secretary, Mrs. Alice Adams Cosler.

Our plans for the year are definite and made out in advance. There will be six meetings, one of which will be held with Delta chapter. Discussions on subjects pertaining to the University, the active chapter members and the alumnae will be led by members who can speak from experience.

The association is glad to welcome to Bloomington and to active membership in the association Mrs. Marian Janes Moffat, formerly a member of Delta chapter and later secretary of the University Y. W. C. A.

ALICE A. COSLER.

INDIANAPOLIS ASSOCIATION

We are all back again, after a summer's rest, ready and eager to start our interesting program for the coming year.

Our first meeting, September 24, will be President's Day.

For sometime, our Entertainment Committee has been working and planning for our Founders' Day state luncheon to be held at the Claypool Hotel, October 15. They are not divulging any secrets as to their plans, but promise us a splendid luncheon and a good time to follow. The next issue of *THE KEY* will give you full particulars.

During the last week in October, the Panhellenic Congress will be held in Indianapolis. At this time we will enjoy a visit with Miss Sarah Harris, our Grand President, who will be Kappa's representative to the Congress.

Mrs. Ruth Allee and Mrs. Mary Ann Baker Beckett (Mrs. Joe Rand Beckett) have spent the summer traveling in Europe. From the interesting letters received from them, both the girls have had a delightful and beneficial trip.

During the early autumn, several parties have been given for Miss Florence Bell Moffitt, whose marriage to Mr. Morton Marshall Milford, Beta Theta Pi, took place September 6, at the Downey Avenue Christian Church in Irvington. Mr. Milford is editor of the Fort Myers Press, Fort Myers, Florida, where they will make their home. Florence says if we want more information about Morton, just look him up in "Who's Who."

Cupid begs leave to interrupt again—Miss Isabell Davidson and Mr. Bradford Noyes, Jr., Kappa Sigma, were married August 25 at the Spink Arms, Indianapolis. Mr. and Mrs. Noyes will live in Ithaca, New York, where Mr. Noyes is a member of the faculty of Cornell University.

Mrs. Helen Howe Jones (Mrs. Charles F. Jones) has moved to Louisville, Kentucky, for permanent residence. We will miss Helen in the club this year for she certainly was a "live wire" but she has promised to so arrange her visits to her mother in Indianapolis, that she may be able to attend some of our meetings.

On August 16, a daughter, Vern Elizabeth, came to live with Mr. and Mrs. Wm. Mendenhall (Verna Sweetman Mendenhall).

The Indianapolis Alumnae Association will hold its meetings the second Saturday of each month during the coming year, excepting the months of October and June. We extend a cordial invitation to each and all of you who are in Indianapolis on the second Saturday to attend our meetings. We want to know you—we want you to know us. Come when you can. Meetings start at 2:30 o'clock.

EDITH L. HUGGINS.

MUNCIE ASSOCIATION

Alice Wilson Huffine (Iota) who was married last spring is living in Muncie now and we are very glad to have her with us.

Mrs. Everett Warner (Lalah Randle, *Iota*) has a new son, John Rollin.

Mrs. Harry Orr (Delta) also has a son, Thomas William.

Mrs. Clay Ball (Kappa) and two sons spent part of the summer in Hillsdale, Michigan, with President and Mrs. Mauck of Hillsdale College.

Ruth Elizabeth Chaney (Kappa) is teaching Home Economics in Muncie again this year.

Mrs. Hirsh (Beta Delta) and daughter spent several months at their summer home in Wisconsin.

RUTH ELIZABETH CHANEY.

ST. LOUIS ASSOCIATION

St. Louis Alumnae Association is more than excited and busy in view of the installation of Delta at Washington University. We appreciate the response the fraternity made to Delta's petition. They are mighty proud to have been given a unanimous vote and we promise you all that you will be proud of them. They are such splendid girls with the best background, and have already made their influence felt on the campus.

We are looking forward to Miss Harris' visit to install this local. We pledged them formally last spring just after the charter was granted and they were the happiest lot of girls I ever saw.

We have a new member, Ann Fullbright Teasdale, from Theta. She was married to Kenneth Teasdale, Beta, in June and we are so glad to have her live in St. Louis. We are mighty sorry to lose Mrs. E. K. Marshall and Mrs. Thomas Martin, Beta Zeta. Mrs. Marshall goes back to Baltimore to live and Mrs. Martin has joined her husband who has gone into the army. Mrs. Martin, by the way, has a lovely son—born in May.

Mrs. Paul Simmons (Anna Mary Mills, *Theta*) has a new boy; Maybelle Price Peck, *Theta*, a daughter, and Margaret Anderson Johnston, a five months' old son.

Ann Straton Miller, Beta Xi, has been here for a short visit. She is gaining flattering success with her songs.

We hope to have a big delegation from all our neighboring chapters for Delta's installation and we just wish that someone from every chapter could be with us for that big event.

MARGARET ANDERSON JOHNSTON.

LINCOLN ASSOCIATION

Miss Viola Barns, professor of History at Mount Holyoke College, taught in the Summer School of the University of Nebraska.

Mr. and Mrs. Verne Hedge (Grace Bennett) spent the summer in Europe. Mr. Hedge was the delegate from Lincoln to the International Rotary Convention in Scotland.

Miss Adelaide Elam spent August at Camp Mystic, two miles from Mystic, Conn. While there she taught the girls Arts and Crafts.

Captain and Mrs. Pillsbury (Grace Broady) spent two weeks in Lincoln this spring before starting on their trip to the Philippines. Captain Pillsbury has been detailed to Manila for two years.

Mrs. August Schmidt (Dean of Newcomb, Iowa, University) and Mrs. Lucile Becker Foster are to teach in the Lincoln High School this coming year. Mrs. Schmidt will teach History and Mrs. Foster Dramatics.

Miss Mary Jones of Los Angeles, a charter member of Sigma and former librarian of the University of Nebraska, spent July in Nebraska.

The August number of the *Smart Set* has a series of sketches on "Nemaha, Neb., 1921" by Jessie Beghtol Lee. Mrs. Lee has been made National Secretary of the Honorary Literary Society Chi Delta Phi, which has recently established a chapter at the University of Nebraska. She is now making her home at Buffalo, New York, where Mr. Lee is in charge of an Armour plant.

Miss Louise Pound, Miss Olivia Pound, Miss Adelaide Elam and Miss Nora Livingston, an undergraduate, are members of Chi Delta Phi.

The University Players presented some excellent plays during June and July at "The Little Green Theater" on the University campus. Lucile Becker Foster and Marguerite Lonam Stott did some fine work in several of the plays.

Our association has many marriages to record.

Miss Maud Risser and Mr. Paul Holm were married in April. They will make Lincoln their home, but expect to spend a few months each year in California.

Miss Lucile Leyda of Falls City and Dr. Gesse, Dean of Chemistry at the University of Montana, were married June 14, 1921. Dr. Gesse is a Phi Delta Theta. Miss Leyda was head of the Department of Physical Education there.

Miss Mabel Stevens of Los Angeles, Cal., was married to Charles Stephen Wilson of Colton, Cal., January 22, 1921.

The marriage of Miss Louise Carlisle and Mr. George E. Perley took place early in the year of 1921. Mrs. Perley is president of the Des Moines Association.

Miss Daisy Parks of Ashland and Mr. Leonard Cline were married June 14, 1921. Mr. Cline is a Phi Delta Theta. Mr. and Mrs. Cline will live in Lincoln.

Miss Agnes Johnston of Superior, Neb., and Mr. Julius Herbert Warner of Butte, Montana, were married in March, 1921.

Miss Louise Irish and Mr. Arthur Lonam were married July 25. Mrs. Lonam is a graduate of Michigan University. She has been advertising manager for one of Lincoln's largest department stores for the last two years. Mr. Lonam is a member of Beta Theta Pi. Mrs. and Mrs. Lonam will make their home in Torrington, Wyo.

Miss Marjorie Scoville and Mr. Herbert R. Dana were married June 2, 1921. Mr. Dana is a member of Delta Upsilon.

Miss Theo Hansen's marriage took place on August 25 to Mr. Charles Fremont Whitehall of Eastland, Texas. The wedding was at the Hansen summer home on Pelican Lake, Nisswa, Minn.

MARTHA BURKS HARLEY.

MANHATTAN, KANSAS, ASSOCIATION

We are happy to announce that the Manhattan Alumnae Association is organized. We have had five meetings and they have been most enjoyable affairs. Our membership list has twelve Kappas. We regret that two of our members will no longer be here to attend our meetings. Mrs. G. M. Dolezal (Nina May Powell), *Gamma Alpha*, left in June for Boulder, Colorado, to join her husband. Mrs. O. W. Hunter (Sue Smith) *Gamma Alpha*, leaves soon for New York City where she will make her home.

We are proud of the two new Kappa babies. Wilbur Nielson Skourup, Jr., son of Mr. and Mrs. W. N. Skourup (Rembert Harshbarger) arrived June 23, and James D. Colt, the Fifth, was born to Dr. and Mrs. James D. Colt, Jr., on August 14. Mrs. Colt was Kate Hutchings of *Gamma Alpha*.

We have been holding our meetings at the homes of the various members. So many of our members planned to be away during the summer that we decided to discontinue our meetings until September. We have a number of plans we hope to carry out during the winter months and I hope our next letter to THE KEY will be more interesting.

NADIA DUNN CORLEY.

DES MOINES ASSOCIATION

Miss Anna Laura Clark of Gamma Theta chapter will enter the Emerson College of Oratory, Boston, this September.

Miss Julia Watson is the head of the school of expression at Central College, Pella, Oregon.

The Misses Ione Craig and Bertha Shore will attend the State University and be affiliated with Beta Zeta.

Births: To Mrs. John Darrah Jenswold, a daughter, Barbara Marion, born July 27, Duluth, Minn. To Mrs. L. W. Shotwell, Beta Omega, a son, Walter Elwood Shotwell, II. To Mrs. Ruth Woolson Slye, a son, Donald Woolson Slye, June 5,

Miss Bernice Bramhall of Gamma Theta motored to the Dells of Wisconsin with her family.

Miss Eleanor Morning of the class of 1921, Drake University and Gamma Theta chapter will teach at Ames the coming year.

Miss Pearl Harrington Bennett is playing Bubbles, with the Vawter Chautauqua Circle.

Miss Alice Marple of the Historical Library was a delegate to the National Meeting in June.

Mrs. J. W. Cokenower was elected first vice-president of the North Des Moines Improvement League. The subjects of street cars, transportation and a fair price committee are some of the things this active group are discussing.

Miss Bertha Shore entertained all of the Kappas in the city at a luncheon in her home, August 6; over forty enjoyed her hospitality.

Mrs. Rachel Swan has been enjoying country trips with her son.

MRS. J. W. COKENOWER.

DENVER ASSOCIATION

It have been 'most half a year since you all have had any news from our association and such a world of happenings in the meantime. We are still active with our work at the Recuperation Camp, taking care of the birthdays of sixty men, and supplying robes as fast as we can. As a unit we have joined the Needlework Guild and comprise a section.

Olive Morgan, Beta Mu, was married in April to Harold Oakes, Beta Theta Pi, and is now living in Dallas.

Our annual picnic, which is the last meeting of the year, was held in June at Mrs. McCaw's lovely summer home on Mount Lookout.

In July Elizabeth McGowan, Beta Mu, and Charles Piper, Beta Theta Pi, of the University of Indiana were married and live in Akron, Ohio.

Among our newest arrivals are Frank A. Kemp, III., Frederick Morley Shelton (Katherine Morley, Beta Mu), Kenaz F. Huffman, Jr., (Ruth Musser). Kate Nelson Houston has a daughter, Marguerite Nelson Echternach a son, Besse Low Ireland a daughter, Amy Pitkin Stearns a daughter, Gladys Clarke Whitney a daughter, and Kenneth Keys Wallach a daughter.

Dr. and Mrs. Parke R. Kolbe made Denver a fleeting visit this summer. Mariana McCaulley and Evelyn Why from Philadelphia stopped a few days on their motor trip to Yellowstone and California.

Judge G. W. Musser, the father of Ruth Huffman and Georgiebell Musser, died very suddenly this summer.

We all enjoyed having the Grand Council Session here in Denver, and are so glad to have the younger Kappas meet the Grand Officers and find that they are not just names after all.

Mr. and Mrs. R. R. Scott and little son have moved to Indianapolis, much to our disappointment.

Ethel Adams, Beta Mu, and Caldwell Martin of Denver were married in May. The engagement of Edith Brewster, Beta Mu, and Marmion Simmons of Minneapolis has just been announced. They are to be married in the fall and will make Boston their home.

Virginia Van Meter graduated in medicine at the University of Pennsylvania this year and is now taking her internship at the Robert Packer Hospital at Sayre, Pennsylvania.

And so endeth the history of the last six months.

ELFRIDA V. VAN METER.

OKLAHOMA ASSOCIATION

June 6 the association entertained the seniors of Beta Theta chapter with a dinner at the Skirvin Hotel, Oklahoma City. This has become an annual custom, for we feel it serves as a link in bringing those who are about to join our alumnae ranks into closer touch with our work and aims.

A daughter, Caroline, was born to Mr. and Mrs. Roscoe Cox, April 29. Mrs. Cox was formerly Avis Barbour, and at present the president of our association.

Many of our members are attending summer schools. Ruth Klinglesmith and Floy Elliott are enrolled in the University of Chicago. Dorothy Snedaker, Mary Burton, Wilma Aspin, and Reaves Alford are attending schools in New York City. Virginia Hancock is studying at the University of California.

Elaine Boylan is employed by the Library Commission of Oklahoma with headquarters at Oklahoma City.

Alice Mulvey was married May 15 to J. Albert Wheatley of Enid, Oklahoma.

Pauline Dellinger and William Eagleton, Jr., were married June 1. They are making their home at Tulsa.

Margaret McMillan was married to Montford Johnson of Norman, Okla., in May.

Charlie Nickle and John L. Coffman of Nowata, Okla., were married in June.

The Oklahoma Association is looking forward to Founders' Day Banquet which is attended by Kappas from the entire state. At that time we expect to formulate an extensive and definite program to assist Beta Theta chapter in the buying of a permanent home.

MARIAN N. CRADDOCK.

WASHINGTON ASSOCIATION

We regret to say that our Beta Pis have not been particularly illustrious, nor have they accomplished unusual things in the recent months, but we have made a few changes and had a few additions. In the early spring Rosamond Parsons who was for a long time head of the Community Service work in Aberdeen, Washington, was married to Allen Engle, and is now living in Mt. Vernon, N. Y. Shortly before that Moncia Hughes married De Loss Sutherland and in May, Charlotte Winter and William King were married in California; in June Lottie Termholm was married to Cornelius E. Hughes of Seattle. Esther Palmer married Raymond Bordeaux of Bordeaux, Washington. Mildred Jackson was married on Senior Luncheon Day at the chapter-house to Arthur Keys, and Dorothy Thomas was married to Ross Williams. In July Louise Gates married Frank Jenne and is now living in Mt. Vernon, Washington.

Besides weddings we have had an addition of several little Kappas. Marion Lewis Black, Doris Smith Taubman and Mrs. Arthur Gray all possess new daughters.

Bertha Tremper, who has been studying music for several years in New York and Boston, was recently married abroad, and Margaret Craham Jones, who has been doing special work for the "Stars and Stripes" in Washington, D. C., is again in Seattle.

On September 2, the Kappas of Seattle met and entertained by drives and tea at the chapter-house, the women of Gamma Phi Beta who were in the Northwest for their National Convention.

PORTLAND ASSOCIATION

After eleven of the most interesting meetings and a big get-together picnic held just a week ago to wind up the year, we are more than ready for what this coming year might have in store for us.

We had two weddings this summer—Mary Irving to Lyman Patton and Doris Slocum to Edgar Garbade.

Catharine Burnside has been regent at Camp Willapa this summer.

Carrin Degemark is with us again. She is superintendent of Portland Playgrounds and has four of Oregon's active Kappas helping her.

The Mazamas were the first to speed around Crater Lake in a motor boat, and Mrs. J. R. Leach (Lilla Irwin) is spending her summer with them taking all sorts of interesting trips.

Genevieve Keller graduated from Columbia University this year and Gene Geisler is back after an exciting first year of post-graduate work.

We have enjoyed meeting Rachael Green, who is visiting her sister, Zola, (Mrs. L. M. Jeffers) and hope she will visit us often.

BOISE ASSOCIATION

Mrs. Hal E. Cornell (Eva Casey, Sigma, '07), has a baby girl, Barbara Ann, born August 7.

WALLA WALLA ASSOCIATION

Marie Miller was married to Harold Du Bois on June 22 in the First Presbyterian Church of Walla Walla. Mr. Du Bois will be Professor of Philosophy in Hiram College, Ohio, this year.

Two new babies have arrived this summer. Helen Francis, daughter of Claud and Russel Miller, and Emory William, son of Sylvia and Emory Neal.

Eleanor Sickels, an A.B. 1917 of Whitman is receiving her master's degree at the University of Wisconsin this summer. She has been teaching in the English Department this past year.

The wedding of Neva Martin to Ennis Massey, a Beta from the University of Idaho, took place at her home in Spokane on August 17.

NAOMI GEORGE.

PI ASSOCIATION

Pi Alumnae gathered at Mrs. Orrick's home on August 17 for the purpose of entertaining the active chapter and guests at tea. This afforded the first opportunity for the alumnae to exchange bits of gossip since the luncheon last spring in honor of the graduating Kappas.

The most important item of the afternoon's news consisted in the large number of Kappa brides who have chosen August instead of traditional June for their weddings. During this month Pi Association accounted for five weddings. Those who participated in these were Madeleine Benedict, '20, and Le Roy Gimbal, '19; Marie Kinkelin, '21, and Alfred Otto, '22; Sara d' Ancona, '19, and Grant Hunt, '17; Norma Thayer, '21, and John Raggio, Jr., '21; Katherine Crellin, '15, and Dr. Robert Reynolds. This spring Mignon Henrich, '21, and Hale Luff, '20, were married, while Bernice Carr, '19 and Hugh Kice chose early summer for their wedding.

We have several new recruits to the business world. Among these are Evelyn Sanderson, '21, Helen and Hazel Lampart, '21 and Jean Budge, '20, while the field of teaching claims Marjorie Waldron, '19. Ruth Gompertz, '21, and Everard Hunt, '21, have both returned to the University of California for a fifth year to obtain teachers' certificates. Mary Louise Michaels, '21, is attending Bryn Mawr this winter. So our new alumnae are very well accounted for in these personals.

Pi Alumnae were happy to greet Henrietta Johnson Detoy, '19, when she and her husband tarried here a few days on the way to their new home in Los Angeles. We also rejoiced to see Florence Crellin Griffith, '20, this summer when she journeyed here from Los Angeles to be matron of honor in the wedding of her sister Katherine Crellin.

Pi Association members have returned from restful vacations and are looking forward to the coming year with great interest.

VIRGINIA GOHN.

COLLEGE NEWS

HELEN BOWER

For the first time in the history of Columbia University a woman, Mrs. Gulli Lindh Muller, took the Hippocratic oath when she received her degree from the College of Physicians and Surgeons last spring. Mrs. Muller, who is the wife of a clergyman, graduated at the head of her class. Her home is in Villa Fridhem, Tyringe, Sweden.

You never can tell about colleges. The senior class at Wesleyan, which is in Middletown, Conn., took a vote last June and named Marilynn Miller as its favorite actress, with John Barrymore as its favorite actor. Elaine Hammerstein and Charles Ray were favored among the motion picture folk, whilst Amherst was voted Wesleyan's best-liked rival. "Father and mother pay all the bills and we have all the fun, in the friendly rivalry of college life."

Not intending to encourage "Kulture," we are nonetheless inspired to note the result of a straw vote taken recently in Berlin to determine what high school students of today are reading. College freshmen and sophomores of pre-war days who have vivid memories of *Wilhelm Tell* might be interested to know that Schiller is not being read at all by these German young people, and Goethe very little. Rather do they prefer Fritz Reuter, Felix Dahn, and Gustav Freytag, with Rudolph Herzog as most popular of all. "Herzog lectured in the United States ten years ago," remarks a New York paper, "and his *Die Wiskottens* has been published in English translation in New York."

Under a plan suggested by Mr. Herbert Hoover as a fitting memorial to the war service of the famous Commission Relief in Belgium, twenty-four American college girls will go to Belgium each year to take postgraduate courses in Belgian universities, whilst the same number of Belgian co-eds will come to this

country. Three of the twenty-four American girls to be nominated this year were Miss Laura T. Cannon, who specializes in chemistry and has a Ph.D. from Yale; Miss Clara Marburg, from Vassar, who was an honor student at Penn last year and has a Phi Beta Kappa key; and Miss Catherine Rich, from the University of California, student of ethics, philosophy, and psychology.

In Vanderbilt University school of law, Nashville, Tenn., four women students, instead of the usual five necessary for the establishment of a chapter of Phi Delta Delta, women's legal fraternity, were granted a charter by the fraternity's grand council because of their excellent scholarship. The chapter was installed last May, when Miss Bessie Newsom, practicing attorney of Oklahoma City, alumna of Vanderbilt, and grand president of Kappa Alpha Theta, assisted in the ceremonies. Chapters of Phi Delta Delta are established only in law schools belonging to the American Law School association. Miss Jeanette Rankin, Kappa sister, is a member of the fraternity.

Not so long ago a certain New York paper had a fine time with a symposium in its Sunday magazine section, under the heading "College Girls Gain Higher Marks than Boys." Letters from the deans of colleges from coast to coast gave a fund of material, with the conclusion in most cases that women excel men in languages and literature, that women, on an average, made better grades than the men students, and that they were more careful in preparation of their lessons, as well as being more conscientious in their study. In the only chart of grades published, which came from Dean E. L. Hulett, of St. Lawrence University, Canton, N. Y., Kappa Kappa Gamma (Beta Beta chapter) was shown second in the list of fraternity and non-fraternity groups for high average of grades.

RULES FOR KEY CORRESPONDENTS

ALL CONTRIBUTORS TO THE KEY SHOULD KNOW THESE

1. Copy due September 1, November 1, January 1, and March 1.
2. Send chapter letters to Rosalie B. Geer, 241 Washington Ave., Brooklyn, N. Y.
3. Write on official paper, *one side only*.
4. Have your copy typed, double-spaced.
5. Do not send special delivery letters.
6. Have chapter letters signed by the president, corresponding secretary and KEY correspondent.
7. Write dates like this: October 23, November 18, not October the twenty-third, the eighteenth of November.
8. No capitals for: freshmen, sophomore, junior, senior, class, president, college, chapter. When in doubt use a small letter.
9. In copy that is not typed, print proper names.
10. Try to express the personality of your chapter in your letters.
11. When appointed KEY correspondent send your name and address to the editor.
12. Send KEY subscriptions to Mrs. Parke R. Kolbe within a week after initiation, and in October of the following years.

CHAPTER LETTERS

Next letter due November 1. Send to Rosalie B. Geer, 241 Washington Ave., Brooklyn, N. Y.

No letters received from:

Pennsylvania.

Syracuse.

Toronto.

Alleghany.

Ohio State.

De Pauw.

Indiana University.

Kentucky.

Iowa.

Colorado.

Kansas University.

Montana.

Washington University.

Idaho.

Washington State.

Stanford.

HERE'S A GOOD LETTER

Phi, Boston University

Phi chapter has been truant for so long that now she has enough news to fill pages and pages instead of one little letter.

First, you will want to know the 1921 initiates, who took their Kappa vows in April. They are the kind that just had to be Kappa and wear the key! Betty Carleton, Isabelle Kirkland, our Dutch-clip, known only as "Kirkie," Muriel Langlier and Edna Walck of '24 were the basketball stars Kappa won—and with them, Ida Blackburn, '23, a full-fledged coach and "gym" teacher. Frances MacDonald, '24, sweet and smiling from the sunny south and child of a loyal Kappa, naturally came to the key. Then there are the busy ones: Eleanor Sands, '24, always engaged in official duties or Botany; Barbara Hamilton, '24, who simply dotes on German; Lena Northrup, '22, a keen Woman's Rights' champion; Grace Geradi, '23, wee, but oh, how industrious; and Winifred Dodge, '23, slender, neat and always ready for business. We know you'd like everyone of them. Last of the Kappa dozen is the writer.

Just before initiation, we had a glorious house party for the actives and their pledges. I wish you could have been in that quaint old house in Marblehead, with its abundance of antiques and dear old fireplaces. Every minute sparkled with fun, for the house was filled to capacity with Kappas—and that means real comradeship. We loved every bit of it—especially the lobsters!

Our second house party was one week before finals and the ten daring ones, who yielded to Louise's tempting invitation to her seaside cottage, swore valiantly that they would study just the same—but you know what a

couch hammock and a cool breeze can do to one's ambition! However, we passed finals with flying colors, so we were glad we went!

As for the class elections and honors—Kappas have more than done their share. "Pick," (you met her at Convention) heads the Glee Club during this, her senior year. More than half the G. A. A.'s athletic chairmen are Kappas and five who wear the key received athletic awards. We are represented by two on the staff of the *Beacon* and even in the dead languages we shine, for Muriel received the Freshman Latin Prize!

Of course, the best of all is Dot Lyons with her election to Phi Beta Kappa. Now she wears two golden keys—a privilege few girls may claim.

Kappa spirit traveled about on the wings of Round Robins during the summer, and burst into full blossom at a splendid get-together at Marblehead in September, where we talked our vacation doings and made plans for this year's work and play.

Phi chapter wishes every chapter a most successful and happy year of Kappa fraternity.

ANABEL BARBER.

WHAT ARE THE "SUBTLER STUNTS?"

Beta Sigma, Adelphi College

In the fall a Kappa's fancy lightly turns to thoughts of house party. Beta Sigma's will be at Bridgehampton, Long Island. We intend to amuse ourselves with golf, tennis, swimming, beach parties, hikes, riding and the subtler stunts that spring up whenever Kappas commune. We can also spend hours swapping stories. We are eager to hear from the eight Beta Sigmas who went to the Y. W. C. A. Student Conference at Silver Bay. So far all we know is that they and twelve other Kappas there had a breakfast party in the woods. Also we are curious about the co-operative camp which four Beta Sigmas ran at East Wolfboro, New Hampshire.

House party ends on the fifteenth and four days afterward, classes start. Apart from a natural interest in freshmen, hazing and entertaining, Beta Sigma expects a busy winter. Helen Ringe is president of the Student Association, Ervin Hence is president of the junior class, and Evelyn DeMott is Panhellenic president. Dorothy Nugent is advertising manager of the *Oracle* and the Colston twins are on its business board. Alice Wilson, '21, has been awarded a fellowship in history at Syracuse University.

Under "Births and Marriages" we wish to report the arrival of Edgar Franklin Romig, Jr., on July 6, and the marriage of Edna McNeill, '20, to William McKenzie in October.

For current events we would like to say that we have a supper meeting every first and third Wednesday. If any out-of-town Kappas stray into New York, we hope that you will come to see us. Our phone number is Prospect 10141 and there is always a Kappa to take a message and to tell you how to penetrate the intricacies of Brooklyn.

DOROTHY NUGENT.

SWARTHMORE BELIEVES IN HOUSE PARTIES

Beta Iota, Swarthmore

Many events of importance in the lives of Beta Iotas have occurred since the last chapter letter was written. Frances Runk was elected president of the Y. W. C. A. and Dorothy Anderson is to be secretary of the senior class. Marian Satterthwaite and Isabelle Fussell will be on the Executive Committee of the Woman's Student Government.

On May 6, we initiated Gladys Cisney and Marjorie Goetze. But by far the biggest event of the spring was the luncheon our alumae gave us at the Strathaven Inn at Swarthmore, on May 14.

As Beta Iotas have no chapter-house, we make the best of our small room. Last spring under the able leadership of Betty Atherholt, the chapter room was improved immensely, with new furnishings.

Betty Smith is coming back to us in the fall, from Northwestern University. We thank Upsilon chapter for their interest in her.

Some of our seniors were at a house party in Easton directly after commencement. Four Kappas are councillors at the same camp, Hope Richardson '20, Helen Griscom, Marjorie Kistler and Janet Young. Again this summer two members have been working at Silver Bay, N. Y.

We are looking forward to the fall house party which to be at the Oceanic in Ocean City, N. J.

MARGARET L. HAYES.

PSI HAS JOYFUL NEWS

Psi, Cornell University

At last we have purchased a house and contractors are at work remodelling it. We expect it to be in good shape soon.

Several Kappa engagements and weddings of the past year have not been heralded in THE KEY. Barbara Murlless, '21, announced her engagement to Frank Lambert, Alpha Delta Phi, of Trinity College and Sarah Speer, '21, to Peter Paul Miller, Chi Psi, Cornell '20. Frances Corbett, '21, was married in February to Colston E. Warne, Kappa Delta Rho, Cornell '20. The whole Kappa house turned out for the wedding of Mary Gibb, '21, to Leslie Irving Nichols, Chi Psi, Cornell '20, which was held in the University Chapel. Word has also been received from Norway of the marriage of Cate Wilhelmson, '20.

K K Γ had the distinction of having more Phi Beta Kappas this year than any other sorority or fraternity. They were three in number—Helen Bateman, Margaret Thilly and Irene Hebel.

VIRGINIA W. NEEDHAM.

THREE PHI BETA KAPPAS

Beta Beta, St. Lawrence University

At commencement, eight of our girls, Jessie Barclay, Elizabeth Short, Mary Ellsworth, Amelia Wood, Dorothy Church, Laura Russell, Dorothy

DeGraff and Hazel Northrup completed their college courses, three of them graduating with high honors. Amelia Wood, Hazel Northrup and Dorothy DeGraff were elected to Phi Beta Kappa. Hazel had the honor of being one of the four Commencement speakers. Commencement also brought several of the girls' mothers to us. We were glad to know them and to have them with us.

One June 3, the morning of Moving Up day, the freshmen gave their annual Breakfast. The occasion was marked by that strange and yet, I suppose, customary action on the part of the seniors. They were, by turns, ridiculously happy and mournfully sad, the latter predominating!

By the way, we must not neglect this chance of giving the new Kappas, whom we initiated at the beginning of the spring semester, that feeling of pride which we all experienced the first time we saw our name in *THE KEY*. They are Elizabeth Arnold, Catherine Bernier, Doris Eggelson, Louise Burke, Gertrude Wood, Edna Jeanne, Mary Whitehead, Hazel MacMillan, and Alice Richardson of the class of '24, and Katherine Hartwell of '23. They have already proven themselves enthusiastic workers for Kappa Kappa Gamma.

Mary Gunnison, Una Tuthill, Jessie Barclay and Gladys Carpenter were given parts in the Commencement plays.

On August 1, at her home in Antwerp, Nina Roop, '17, was married to Carroll Sanders, '17, Beta Theta Pi.

The alumnae and active girls in town had their annual summer picnic on the University campus August 3.

Panhellenic is putting us under new rules this fall, secret bidding, and we are hoping for success, in spite of the newness and strangeness of the method.

Beta Beta wishes that all her sister chapters may have a happy and successful year.

SUSAN BERNIER.

HAD NEIGHBOR CHAPTER AS GUESTS

Beta Upsilon, University of West Virginia

After a too-short summer, Beta Upsilon settles down to a winter of work—relieved, however, by some play.

Just before college closed last spring, a few events of interest took place. For one thing, our freshmen presented us with several articles much needed for the house. On May 21, we held our annual picnic at Oak Park. There were about one hundred and twenty guests there. In order to become acquainted with our neighbors, the Pittsburgh Kappas, we invited six girls from Gamma Epsilon chapter to spend that week-end with us and attend the picnic. If they enjoyed knowing us half as much as we enjoyed knowing them—well, they'll come up again sometime.

When the honorary society for seniors—"Laurel"—elected nine new members this year, Mary Guiher and Virginia Armstrong were chosen. Election to this society is based on campus activities.

Commencement took away several of our girls.

About a week after commencement Anagrace Cochran, one of the seniors was married to Clarence Roby. This might be said to mark the end of Kappa activities until September.

This summer we have been scattered far and wide over the state of West Virginia, and even outside the state. Those who write frequently have kept in touch with each other, and others of us are trusting to the memories of our chums and believing faithfully that we shall be recognized in the fall.

We are to keep the same house; we have engaged the cook. Now we are merely waiting until the time comes for us to spend nine months together. We know that they will prove to be the best and happiest months of all.

MARGARET REAY.

WE ARE EIGHT

Lambda, University of Akron

Lambda has lost so many actives that there will be a small crowd of us at college this fall. We had three seniors: Mary MacThwain, Isa Keek, and Marie Louise Cheval, our little French sister who has gone home to Paris. Isa finished up an energetic and successful career at Buchtel by being chosen to crown the May Queen on Tree Day. Gloria Smith, sophomore, surprised us all by being married during Easter vacation to Bruce Carmichael, Δ K E. Cornelia Harper, freshman, is planning to move to California soon, so that there will be only about eight actives left.

Our last active party was a dinner dance at Shaker Heights Club, Cleveland, June 20. Lois Waltz and Alene Blackburn returned just in time for it from a motor trip in West Virginia.

Kappa reunion was held June 14 with about fifty Kappas. The alumnae took that opportunity to decide on a formal alumnae organization, which the Akron Kappas have never had before.

Just before reunion we initiated our latest pledge, Louise Dilley. Since then we have had only a few spreads and parties. We are trying to refurnish the chapter rooms before pledge day, and the alumnae are giving a bridge for the cause.

Vacation wasn't half long enough, but after all, it will be good to be all together again.

MARIAN BURR.

PANHELLENIC INNOVATIONS

Gamma Epsilon, University of Pittsburgh

Vacation days are rapidly passing and the girls are all enthusiastic and waiting patiently for the opening of school. Although our chapter has been widely scattered this summer, we have managed to get together now and then for an afternoon movie or picnic.

For the first time we are able to announce that Gamma Epsilon will be installed in a new chapter-house this fall. We are all excited over the prospect. We are having a delightful time arranging all the details of hangings and decorations so that our sisters from out of town will have a cozy place to live this winter. The girls are all pleased about it and it is sure to be a success.

Spring initiation was held for Muriel Cole and Gertrude Clark.

A great change has been made in Panhellenic rules this year in hope that there will be some improvement. There is a four weeks' truce in which time every fraternity girl is honor-bound not to wear her pin and to treat all freshmen alike. After that the freshmen are to be entertained by the Y. W. C. A., W. A. A., and W. S. G. A. girls. Bid-day is not until a week after the beginning of the second semester. It is hoped that this new plan will prove more successful than the one previously used.

OLIVE WILT.

WEDDING FEVER

Beta Rho, University of Cincinnati

Although the days have been warm and many of her members absent, Beta Rho has not been idle this past summer. Early in June she sat in state in a place of honor at the wedding of one of her alumnae, Ruth Wycoff, to Raymond Grasmuck. The wedding fever started briskly this year among the alumnae and is spreading rapidly through the active chapter. Mrs. Clara Cornell, alumna, gave a charming luncheon on May 21 to announce the engagement of Marion Martin, active, to Gordon Ricker, of Delta Tau Delta. The wedding will take place in November. Loretta Parker has announced her engagement to James Mulford, Sigma Alpha Epsilon from Indiana State. They will be married next year. Cuba Mitchell marries James Weaver, Sigma Alpha Epsilon, on September 14, and Katheryn Kruse will become Mrs. Ferdinand Critchell in October. There are still a good many of us left to "carry on," but we shudder to think what will happen if the alumnae go off on another spree of the same kind.

Another loss which we regret exceedingly is that of Phyllis Appel, who came to us last year from Gamma Epsilon. When Phyllis left us to rejoin her family at Cleveland she had not decided which school she would attend this year.

On June 25 Beta Rho gave a lawn party for the alumnae. Lots of "big sisters" came and had a good time, in spite of the fact that the refreshments arrived distressingly late.

We have held "get-together" meetings during the summer to discuss plans for the coming year—and for our first party in particular.

Beta Rho is going to make 1921-22 a big year. Louise Scherl, who graduated in June, returns with a D. A. R. fellowship in American History. Corinne Scheiffele is chairman of Vocational Guidance Committee, on the Vigilance Committee and on the Committee for the Stadium fête. This fête is a part of the plan of the big Stadium Drive to be made

at U. C. this fall for the completion of our new Stadium. Corinne also made Kappa Delta Pi, an honorary fraternity in Teacher's College. It is seldom made in the junior year. We have also a Kappa, Helen Beiderwell, on Y. W. C. A. cabinet. And last, but by no means least, comes Ruth McGregor, who, besides being on the committees for Viligance and for the Stadium fête, has been elected to the presidency of Woman's League. She holds one of the most important woman's positions on the campus, and everyone in the chapter is pledging herself to support Woman's League, Ruth and Kappa to the utmost of her ability.

MARY FUQUA TURNER.

DR. ALEY NEW PRESIDENT

Mu, Butler College

So many interesting things have been going on in our chapter that it is difficult to know just where to begin.

Josephine Lewis represented Mu at the Panhellenic Convention held by the middlewest district at Bloomington on April 8 and 9. The convention will meet again next year and every two years thereafter, alternating with the National Panhellenic Convention. These meetings will bring the middlewest groups into closer association and will be helpful in enforcing national Panhellenic rules as well as in handling local situations.

We are proud of our two speakers, Ilene Harryman and Martha Montgomery, who were members of the successful women's debating team at Butler and who have been initiated into Delta Phi, national honorary debating fraternity.

Katherine Belzer was laboratory assistant at the Marine Biological Laboratories at Wood's Hole, Mass., this summer.

Due to the new local Panhellenic rules, there are new plans this season. Between May 16 and September 20 we were allowed only three parties, each to be not more than four hours long. A party was designated as a gathering of more than four persons. Our first party was a delightful Japanese tea, given on May 17. Mrs. Thomas C. Howe gave us the use of her lovely home, which made an ideal setting. Paper blossoms transformed it into a bower of loveliness and the girls in their kimonos and sashes made the place seem like a real Japanese garden. The second party was given on July 20 and took the form of a boat dance on White River. The last party as now planned will be a dance on September 19, the night before school opens.

We are looking forward eagerly to the school year, for many things lie ahead. Butler has a new president, Dr. Robert J. Aley of the University of Maine. For a year Butler has been like a ship without a pilot; her greatest need has been a sure hand at the wheel. Dr. Aley seems admirably fitted to fill that need. With the coming of a new president Butler is sure to grow and develop along all lines. A bigger, better Butler seems assured. It seems probable that this development will express itself in fraternity houses. Several have seemed to spring up overnight—and something tells us that Kappa will not be far behind. At least we have high hopes.

RACHEL CAMPBELL.

FRIENDLESS IN "EXCHANGE" DINNERS*Beta Delta, University of Michigan*

Beta Delta announces the initiation on March 12 of the following girls: Amanda McKinney, Helen McBratnie, Martha Kirkpatrick, Harriet Ackley, Helen Keyser, Janet Smith, and Sadye Harwick.

Announcement was made at the house during the spring of the engagements of Frances Buckbee to Clarence Johnson, Mary Buckbee to Samuel Riggs, Anne Kirkpatrick to Clare Hamill, and Maud Hindman to Lawrence Frost.

At the all-campus spring election, Ruth Goodhue received the office of vice-president of the Y. W. C. A., Joyce McCurdy was made vice-president and Theodosia Burton corresponding secretary of the Women's League.

Helen Torrey and Margaret MacIntyre were elected to Wyvern, junior honorary society for women; Maud Hindman was elected to Phi Beta Kappa; and Aletha Yerkes was voted the most popular girl in the senior class.

During the second semester of last year we had several exchange dinners with other women's houses on the campus and a brothers' dinner, all of which were really successful.

Thanks to Beta Delta Association, our chapter-house, when we return this fall, will be newly decorated and, we are certain, much more attractive.

DOROTHY WHIPPLE.

FIXING UP NEW OLD HOUSE*Kappa, Hillsdale College*

Kappa introduces five new freshmen, Emily Blackman, Constance Eldridge, Donna Harper, Alice Roche and Dorothy Triechman.

Our spring party was a success. One fourth of the room was divided off with blue and blue arches, and the smaller room decorated as a sun porch, with lamps and rugs, wicker furniture and cushions. We were annoyed by the too late arrival of our favors. It necessitated our having our little children distribute cards as a sort of I. O. U.

Kappa breakfast, held during Commencement week, was a happy meeting of old friends and the making of new acquaintances. We are proud of this good tradition and look for it with anticipation annually.

We shall miss Florence Bosworth, our only senior last year, and Billie Robinson who will attend Columbia College. In the spring Helen Goodrich, '17, was married to Charles W. Whealan of Kansas City, and Doris Mauck, '15, to Hugo Froedricks of New York in the summer. Beatrice Stone, who was compelled to leave last semester at the death of her mother will return as chapter president.

Panhellenic has decided on second semester pledging for the year with initiation after the finals.

Kappa is to be installed in a different house this year, which is low and ramby and though old and a little run down, has great possibilities as a

fraternity house, especially with fourteen eager girls to live in it and others, actives, alumnae and patronesses, interested from the outside.

With our sixteen enthusiastic freshmen and the older girls, just as enthusiastic we look forward to a delightful and successful year.

UNSIGNED.

COLLEGE PROSPEROUS AFTER CAMPAIGN

Xi, Adrian College

After a busy summer Xi Kappas are ready to take up the duties and pleasures that come with the opening of school. Commencement week brought many of our alumnae back for a formal chapter meeting followed by an afternoon tea.

Adrian College is in a more prosperous condition this year, due to an extensive advertising campaign this summer, and we are looking forward to having many new students.

Cupid has had his share of victories in our ranks this summer. On June 18, was the marriage of Lela Chamberlain, '20, and George Little, A. T. O., '19. Several out-of-town girls stayed over a week after commencement for the marriage, June 21, of Doris Alverson '23, and Donald Frazier, A. T. O., '20. After the wedding the engagement was announced of Winifred Stephens, '21, and the best man, James Sudborough, A. T. O., '20, the culmination of a five day acquaintance. June 22 was the date of the marriage of Frances Foote, '20, and Chester Baker, A. T. O. Theda Palmer has announced August 27 as the date of her marriage to William More of South Bend. The engagements have been recently announced of Laura Blanche Rose, '24, and Marshall Bovee, S. A. E.; Dorothy Palmer, pledge, and J. Kenneth Tolford, S. A. E.

Most of our girls are coming back full of enthusiastic plans for the year. We regret losing Lois and Winifred Stephens to Westminster, Maryland, and Mary Illenden to Madison, Wisconsin.

DORIS ALVERSON FRAZIER.

INTERFRATERNITY ENTERTAINING

Chi, University of Minnesota

This spring Chi chapter initiated Isabel Snoke, Loretta Prugh, and Elizabeth Frankforter.

The annual banquet was given at the Minnikahada Club, with Katharine Jewell Everts as guest of honor. On May 18, the formal spring party was held at The White Bear Yacht Club. The active chapter entertained at a Mothers' tea on May 3.

Jessalyn Salmon announced her engagement to Robert Hartzell; Margaret Todd announced her engagement to Dietrich Smith.

At the annual Panhellenic banquet, Kappa, as the oldest woman's fraternity at Minnesota, welcomed Chi Omega, whose local chapter was installed this spring. The toast was given by Helen Sweat.

During the year, the chapter was entertained at spread by Alpha Phi and Kappa Alpha Theta. After the Chi Omega's first formal meeting, Kappa entertained their chapter at spread.

DORIS WILLIAMS.

ALUMNAE GAVE SCHOLARSHIP CUP

Eta, University of Wisconsin

Just before examinations, we initiated Fredrica Crane, Grace Pilcher, Isabel Schwartzbaugh, Hildegard Luedtke, Janet Miller, Georgiana Kimberly, and Janet Jones.

"Senior Swing Out" was held on the upper campus. The seniors, who appeared in caps and gowns for the first time, marched slowly through the daisy chain that was held by white-clad juniors. After songs had been sung by various organizations, announcements of Mortar Board were made. Eta was made very proud by the choosing of Caryl Parkinson.

There were one hundred Kappas at our annual banquet, which was held at the chapter-house. A silver cup was presented by Elsa Fauerbach, representative of the chapter-house association, for Eta's record in scholarship. On the cup were engraved the names of the three freshmen who, for the last three years, have held the highest average in their class—Eleanor Sheldon, '22, Katherine Elder, '23, Anita Showerman, '24. Among the sororities, Eta ranked second during the second semester of last year, and also during the first semester of this year. Everyone is proud of the fact that Helen Dick was elected to Phi Beta Kappa.

A recent wedding was that of Mabel Smith, '21, to Philip Reed, '21, a Sigma Phi. They are living in New York.

Panhellenic has decided to try out a new plan this year. September 19, 20, 21, are registration days with all-University parties at night given by various organizations such as Y. W. C. A., S. G. A. Classes start on Thursday. On Saturday, September 24, each sorority gives a tea, invitations to which have been sent out during the summer. After this tea, invitations are sent out for the functions of September 29, 30 and October 1, and pledging takes place on October 2. During this time there is to be no intercourse between freshmen and sorority girls; and no badges are worn. Although this is a plan unlike any used at the University everyone hopes that it will better conditions.

ANN ANDERSON.

"THE HOUSE KEY" WINS OUR INTEREST

Upsilon, Northwestern University

The active chapter and alumnae of Upsilon were busy last spring raising money for their chapter-house fund. After the building association had been incorporated, the girls earned money by giving, early in March, a moving picture show and "Kappa Vaudeville." Later in the spring the alumnae generously helped the actives in managing a subscription dance, and held a rummage sale. In addition to the money won by these means,

each active and alumna bought some shares of stock in the building association, thereby considerably swelling the fund. In order to promote the interests of the building association, the actives and alumnae are publishing a quarterly newspaper, *The House Key*, with the help of several Kappa husbands.

Gladys Thompson was chosen to be tennis manager next year at the Women's Athletic Association election. She and Jessie Wall were members of the varsity basketball team. Ruth Van Benschoten was elected head of the freshmen advisory system of Woman's League. Margaret Duthie holds an office in Y. W. C. A., that of undergraduate representative.

On March 14 Upsilon initiated Dorothy Eberhart, Chicago; Mary Howe Oak Park, Illinois; Elizabeth Boring, Evanston; Susan Holman, Evanston; Katherine Wortley, Winnetka, Illinois; Nancy Harris, Morris, Minnesota; Ellen Brooks, Forney, Texas; Dorothy Davis, Glencoe, Illinois; and on May 8, Lulu Wood, Wichita Falls, Texas; Jean Calhoun, Ottumwa, Iowa; Virginia Bull, Wilmette, Illinois; and Helen Nye, Oak Park, Illinois.

Recent Upsilon marriages were Harriet Booth, ex-'21, to Frank Allen; Minerva Fouts, '19, to Leal Bibbins of East Lansing, Michigan; Marion Halberg, '20, to Ives Calhoun. Virginia Reid, ex '22, is engaged to Carl Howe, Psi Upsilon, University of Illinois; Harriet Mogg, ex '22, to Anthony Zoepher, Delta Kappa Epsilon, University of Wisconsin, and Dorothy Edwards, '22, to Howard Knight, Phi Kappa Sigma, Northwestern University.

HAD A FLOAT IN ADVERTISING CAMPAIGN

Epsilon, Illinois Wesleyan

We of Epsilon chapter are proud to announce two new initiates, Elizabeth Funk, '24, of Funk's Grove, and Florence Shreve, '22, of Huntsville, Alabama.

On May 14, we gave our formal dinner dance, at the Bloomington Country Club. The Delta Upsilon fraternity of the University of Illinois presented our chapter with a number of gay futurist panels for the occasion. Their splashes of gold, jade and flame were striking against the black background and with shaded lights and the orchestra playing softly, quite a Bohemian atmosphere was created for the cabaret supper and moonlight dancing.

The Kappas, active and alumnae, helped noticeably toward making a success of the campaign for the greater Wesleyan. The individual subscriptions of the alumnae alone swelled a total of over fifteen thousand dollars toward the six hundred sixty thousand dollar mark. In addition, many of the girls worked to solicit subscriptions. But the most fun for the chapter was a float as an advertising scheme. A huge red truck was festooned with bunting and decorated with a myriad of red, green and gold balloons, and every girl wore a dress of a different pastel shade. We sold ice cream and home-made candy in front of the theaters. There was scarcely a dull minute with our two cunning little negro boys to sing, dance and draw a crowd.

DOROTHY PARKER.

ACT I: HOUSE PARTY

Beta Lambda, University of Illinois

With the opening of the 1921-22 school year so near, Beta Lambda is busy getting in readiness for the fall house party. Every girl must be back at "212" by noon of September 15, as our guests are to arrive the next day. Curtains have to be hung and if our shrubs are like they were last year, we will have to cut them down to find the house.

We shall miss most of all, the eight girls who graduated last June. Ann Coolley is with the personnel department of Ayres, Indianapolis. Louise Fairfield is with the International Harvester Company, Chicago. Harriett Rutherford will teach in Oakland, Illinois, her home city. Ada Pfizenmeyer has a position as assistant Home Economics instructor in the Danville, Illinois, high school. Rosiner Kistner, Louse Pletcher and Louise Prichard have also accepted positions in high schools. Olivia Schad is to be married to Lawrence Duncan Lloyd, A X A, on September 10, at her home in Indianapolis. She has invited the whole chapter and everyone is eager to attend.

Last year was a successful year for Beta Lambda. Our basketball team consisting of Kathryn Ratcliff, Elizabeth Bradt, Doris Glidden, Ada Pfizenmeyer, and Justine Pritchard won the division cup. The team stayed in the tournament until the last, losing the final game to Tri Delt. The winners lose two of their best players this year so we are expecting a victory next year with all but one of our players back.

Justine Pritchard was elected to Mortar Board, honorary senior society. Lida Hough played the lead in the Mask and Bauble production, *Our Children*. Minnie Mae Schmidt was elected treasurer of Y. W. C. A. Louise Fairfield was appointed chairman of the Senior Breakfast Committee. Thelma Scott was elected to Theta Sigma Phi, honorary journalistic, and also junior member of the Women's Honor Commission.

Dorothy Dennett returned to college in May to finish her work of the first semester. Dot was obliged to leave school a few weeks before exams because of illness.

In May we had a rummage sale and card party to raise money for our building fund. We made about \$200. This fall we intend to have another such sale.

We celebrated Mothers' Day by inviting our mothers down for the week-end of May 6, 7, and 8. This was an all-University affair as had been Dad's Day earlier in the year. There were about sixteen Kappa mothers present and all had a lovely time. Each day we had some surprise from the mothers, usually treats of candy, cake and other delicacies.

Beta Lambda went 100 per cent in the Stadium drive, and as a chapter we pledged a \$1,000 column to be dedicated to our alumnae war workers.

We entertained at a house party during Interscholastic week-end. It started with a dance at the chapter-house on Friday night followed by the University events on Saturday.

At the close of the second semester we initiated five pledges: Betty Miller, Ruth Glass, Grace Riddle, Eleanor Taylor and Marion Barber. We

have two new pledges: Thelma Scott, Indianapolis, and Thora Linburg, De Kalb, Ill.

We celebrated the founding of our chapter April 28 by entertaining our alumnae and patronesses at a luncheon.

Ellen Dies, '23, was married to Seth Ryan $\Phi K \Sigma$, this summer.

Our annual house party was the first week in August at the Ratcliff Cottage at Macatawa, Mich. As usual, the girls were glad to get together again.

MARY JANE CLEVELAND.

FULL OF PLANS

Gamma Alpha, Kansas State Agricultural College

Yes, we're making draperies, too! And we've ordered the serpentine, confetti and horns for our dance! We're very optimistic this year. With other chapters we've had parties this summer and jolly good times. We lose a good many of the old girls this year, which we all regret. All our freshmen plan on being back. The whole chapter is anxious for college to start and we're full of the things we're going to accomplish for Kappa this year.

MELBA STRATTON.

A GOOD SPIRIT IN NEW CHAPTER

Gamma Theta, Drake University

Gamma Theta, your next-to-youngest chapter, greets you all in this her first chapter letter.

As the days and months fly past us, we leave behind those happy days of our installation, but with us grows the keener realization of what is before us. We have yet to build from the splendid foundation which you, Kappa Kappa Gamma, have given us, a noble and beautiful structure, incapable of being destroyed.

The day of our installation will long be remembered by all of us. Miss Sarah Harris, Grand President, with her compelling personality, made a lasting impression upon us all. Her ideals, her dignity and above all her understanding lent a certain atmosphere to the occasion never to be forgotten. We found in the thirty-two Beta Zetas from Iowa City many new friends and we know that we have a loyal sister chapter near at hand.

Early in June four of our pledges, Mavis Gilchrist, June Johnston, Agnes Neff and Ruth Shaw were initiated.

We wish for the coming year success and happiness to all our Kappa sisters.

DOROTHY R. KIRK.

MANY ELECTED TO HONORARY SOCIETIES

Sigma, University of Nebraska

One of the best things that happened to Sigma chapter this spring was the initiation of five more girls, Ruth Albert, Mildred Marley, Roberta



NEW CHAPTER, GAMMA THETA, AT DRAKE UNIVERSITY, DES MOINES, IOWA

Prince, Marjorie Tappan and Gertrude Catlin, and we are all happy to see them proudly wearing their keys.

Our banquet on April 23, was the most successful and enthusiastic one in years. There were nearly seventy-five alumnae for us to be proud of, and Marjorie Reese, who was in charge, is to be thanked for the charming Dutch decorations which added so much to our enjoyment. The freshmen presented several new Kappa songs, and capped the evening with a song and dance "Revue" which rivaled the "Follies." Our infant House Fund grew amazingly before Good Nights came around, and Kappa Spirit reigned supreme.

We had a spring party which was a rose festival, even the fountain in the middle of the room was a lovely pink rose. The day after the party we gave a luncheon for the guests, some of whom were old girls, and others whom, we hope, will some day be new girls.

The Pi Phis gave the Kappas a "Wienie Roast" in May, and after it was all over we rode around in the big trucks which they had provided, and serenaded the fraternity houses. It was all such fun, and we enjoyed every minute.

Marguerite Fallon has been chosen for Xi Delta, honorary sophomore society; Ruth Kadel is a Silver Serpent, honorary junior society; and Nora Livingston is president of Valkyrie, honorary senior society, and has also been elected to Chi Delta Phi, honorary literary sorority. Roberta Prince was secretary of the sophomore class, the second semester, and Mildred Doyle was vice-president of the junior class.

Winifred Meryhew, who had such success in the dramatic department this last year, gave "Madame Butterfly" in recital, and Lucile Foster was a member of *The Tailor-Made Man* caste. She has been elected to the dramatic department of the Lincoln High School for the year 1921-22.

Kappas were well represented in the "Kosmet Club" play, and Ruth Kadel directed the music for the production. She was also honored by being an attendant to the May Queen whose crowning took place on Ivy Day.

We have had some Kappa weddings this spring and summer. Margaret Mathews was married in March to J. Lawrence McWilliams, Sigma Alpha Epsilon, and in June Daisy Parks and Leonard Kline, Phi Delta Theta, Marjorie Scoville and Herbert Dana, Delta Upsilon, were married. Our very latest marriage is that of Gretchen Edee, our former KEY Correspondent, and Pierce Jensen, Sigma Alpha Epsilon, who were married just this month.

The house has been open this summer, and we have had several parties for prospective Kappas. Everyone is enthusiastic about the coming year, and with our house festive in a new coat of paint, and so many old girls coming back, we should have the success which we of Sigma chapter wish to all Kappas.

NORA B. LIVINGSTON.

EXCITING WEEKS

Gamma Beta, University of New Mexico

The close of the past year was filled with varied activities for Gamma Beta. Ruth Dougherty and Myrle Walker were pledged at the beginning of the second semester.

As usual the most exciting events of the year came within a few weeks. On April 4, one of the most active of our members, Belle Barton, was married to George P. Sampson, Jr., Sigma Nu, of Winslow, Arizona. On April 5 we celebrated the third birthday of Gamma Beta with a delightful banquet at the Alvarado Hotel. Two weeks later we gave our annual spring dance at the Woman's Club.

In December Lillian Spickard, a charter member of this chapter, was married at the home of Mrs. Guy L. Rogers to Thor Waldemar Kolle of this city.

We are now considering a charming bungalow on University Heights as a chapter-house for the coming year.

ALEXANDRIA VAUGHEY.

INITIATED DEAN OF WOMEN

Gamma Delta, Purdue University

What do you think? The Kappas have bought a new house. We are surely proud of our home which we have been cleaning and getting ready for school.

Four girls announced their engagements this spring. Louise Davis to Wade Libey, Alpha Gamma Rho; Sylvia Collings to Carl Sander, Theta Chi; Bernice Lauman to L. H. Baynes, Acacia; and Inez Richardson to Joe Cannon, Acacia.

Margaret Murphy was married in June to R. L. Hodson, Kappa Sigma.

We were proud to initiate, this spring, Carolyn Shoemaker, Dean of Women, who helped us organize our local in 1912. We also initiated Anne Crane.

Elsie Richardson, '21, was awarded the McRae Medal in Philalethian Literary Society.

Bernice Laumaen, '22, was elected secretary of the Purdue Union and Esther Vernon vice-president for the school of Science. Sarah Brown, '23, was elected to the Junior Hat Committee.

MARIE SCHRASS.

FOUR ENGAGEMENTS, THE REWARD OF PATIENCE

Gamma Zeta, University of Arizona

We are happy over the fact that last May closed a successful year for us. Of the many events, these are only an important few. Our "A" dance was the most enjoyable of all. Our girls spent weary hours concocting tiny pink rosebuds and paper bonnets, but we reaped the reward of patience. Ask someone who knows.

Four engagements were announced: Mildred Stark to P. V. Stafford, Marguerite Ronstadt to Harold Smith, Sigma Alpha Epsilon; Hattie Burnett to Howard Fagan, Delta Tau Delta, and Angie Phillips to Thomas J. Wallace, Kappa Sigma.

Our representation on the campus shows that we have members acting in almost all the organizations. Anne Pace was elected president of Panhellenic, Mary Cromwell is vice-president of Y. W. C. A., and was sent as a delegate to Asilomar. Lillian Cronin is junior representative to the Student Council, and Harriet Tritle was chosen as the prettiest girl on the campus. In scholarship Florine Pinson and Harriet Tritle received honorable mention. Lois Wendel and Miriam McCaffery made junior scholarship.

But we owe the most to our seniors, who numbered seven. Lucy Stanton was the first girl to graduate from the university with a degree in Law. Hazel Hodges and Ethel Brown made Phi Kappa Phi, the honorary graduate fraternity. Blanche Foster and Lucy Stanton were initiated into Theta Alpha Phi, the dramatic fraternity. The last week of school all the active members entertained, honoring the seniors. The members of each class gave a stunt. The freshmen presented a dramatic interpretation entitled "Let us see ourselves as others see us." After the first curtain each remaining senior half dreaded to "see herself." As a parting gift from the chapter, each graduate was presented with a Kappa Memory Book.

On May 30, Florine Pinson was pledged.

ANGIE M. PHILLIPS.

RUMMAGE SALE—NEW REFRIGERATOR

Theta, University of Missouri

It is with a feeling of dismay that we face the approaching school year. We are wondering how it can be done without that memorable senior class. How easy it is to extol the praises of Mary Chorn, Pemala Shackelford, and Frances Ross, our three Phi Beta Kappas of last spring, but how hard it is to undertake our year's work without them. To match the charm and dignity of the Spring Festival Queen, our beloved president, Vitula Van Dyne, seems an impossibility.

However, there are consolations even for those in the most dire distress. This year we go back to a remodeled kitchen; screened-in back porch, new linoleum, freshly enameled walls, and as the crowning glory, a new refrigerator. After much debate it was finally decided that this inconspicuous yet necessary adornment should be purchased with the proceeds of our rummage sale. Great things are expected of that kitchen!

Late last spring the Kappa house experienced one of its great thrills. Of course it was a wedding and the first one to take place right in the Kappa house. Frances Ross and Lowell Leake were married.

Our summer activities have been of the usual type—parties, teas, bridge parties and money making projects. Bridge parties proved most popular and bridge promises to be one of the private chapter-house sports this fall. The rummage sale proved as financially successful as usual; in addition to

this each active girl pledged to earn \$5.00. Making and selling novelty aprons proved one of the easiest ways of fulfilling pledges.

Our graduates of this year are causing much comment because almost all are going to teach. Plans are already under way for a Kappa Teaching Club.

Theta is looking forward with great expectancy to the Installation services of the Washington University chapter, which are to be held in September. Many are planning to be present.

HELEN BINGHAM.

HONORS FOR DOROTHY ARNOLD

Beta Theta, University of Oklahoma

THE KEY hasn't heard much about Beta Theta during the past year, but we promise to be more faithful the coming year.

One of the things we are most pleased about is the fact that this year, all the Kappas are going to live under the same roof. We have rented the house formerly occupied by the Sigma Nus, and are very enthusiastic about buying the furniture and fixing it up in general.

Last year, Dorothy Arnold, a senior, had two of the biggest honors a girl can receive at Oklahoma University. She was elected "May Queen" by an overwhelming majority and she was also elected to receive second Letsizer medal. The latter honor is given for scholarship, activities, and general popularity among the women of the school. Katherine Peak was elected junior class secretary.

We are losing some very strong seniors, but hope to pledge some girls to fill their places this fall. Those who graduated are Madaline Colbert, Cora Dyer, Caroline Copeland, Marie Mulvey, Haise Smith, Dorothy Arnold, Marcelle Lively, Annette Jacobson, and Eva Malloy.

Many other events have taken much attention during the past year, but one of the most delightful was the spring house party. This was the first year we have ever given one, and since it was so successful, we are considering making it an annual affair. Ten guests were entertained during the week-end of June 4. Beta Theta sends greetings, and wishes all the Kappas a most successful and profitable year.

CAROL DAUBE.

BREAKFAST WITH CELEBRITIES

Beta Xi, University of Texas

Beta Xi ended the college year of 1920-1921 with its customary breakfast. We were particularly fortunate in having our Grand Secretary, Della Lawrence, with us. But then she belongs to us you know, for she is a member of Beta Xi. Also present at the breakfast were eleven of our girls who were getting their degrees, and one of these, Helen Mather, a Phi Beta Kappa, announced her engagement to Sam Austin of Chicago. We had two charter members with us, Lucille Wathen, now Mrs. Budley Fisher, and Katherine Searcy.

The chapter-house was open during the summer. An alumna, Mrs. Richard Foster Jones, who was Lucille Law of Beta Xi chapter, chaperoned us. Mrs. Jones has been instructing at Washington University. Virginia Spence, another Beta Xi alumna, was also with us. At the end of the first term she announced her engagement to Cliff Moss of Dallas. They are to be married sometime in October.

Recent marriages are: Carrie May Smith to "Boots" Buchell, both of Cyuero; Helen Mather of Austin, to Sam Austin of Chicago.

SARAH E. BRIDGERS.

THREE ALL-AROUND PHI BETA KAPPAS

Beta Omicron, Tulane University

Beta Omicron chapter is just beginning to get together again, after a summer when everybody seemed far, far away from everyone else. Some were lucky enough to get entirely away from the hot weather and spend all the time in Canada, out West, or at some camp in the mountains; others just left the city for short trips along the coast. The stay-at-homes had to do something, so we got together and organized a bridge club. It has been lots of fun and a great help in whiling away the long summer evenings.

Plans for next year are being made as we gradually drift together again, and it is almost certain that instead of having the first two weeks to look the new girls over, we'll have the whole year and pledge day will come only at the last of school, with initiation as it is now, at the beginning of the sophomore year.

It is to be hoped that we have as successful an ending to next year as we had to the one just passed. Three of the class of '21 made Phi Beta Kappa, and one of them was Ione Brady, Kappa who has not only always made high grades in her class work, but who has also made class basketball every year and Varsity for two years. Lyda Robert, another Kappa graduate, also made her class basketball every year and Varsity the two last years.

Altogether we had eight graduates and we were proud of them all.

Beta Omicron wishes her sister chapters all the good luck in the world for the coming year and we're beginning already to look forward to our reunion at convention next summer.

ALTHEA WUERPEL.

MET MONDAYS DURING SUMMER

Beta Omega, University of Oregon

The members of Beta Omega have spent a busy and happy summer.

The girls have been engaged in various occupations since the close of college last June. Many have been doing office work. Four of the girls—Emma Jane Garbade, Alice Evans, Eleanor Spall and Dorothy McKee—have been supervisors in various Portland playgrounds. Others have gone on vacation trips to the beaches or mountains.

We have met regularly on Monday nights during the summer at the homes of different girls, and have found this an excellent way to see each other more often and perfect plans for the coming college year.

We were delightfully entertained by the Portland alumnae recently at a picnic supper at the Oaks—Portland's "Coney Island." After supper we all enjoyed the various amusements the park offers. We "shot" the chutes, tried our skill at hitting the mark with a baseball and had thrilling rides on the "Blue Streak." This picnic at the Oaks takes the place of the regular Kappa alumnae meeting and we all look forward to it every year.

All of us feel that we are competent authorities on weddings for we have attended three Kappa ones this summer. On June 14, just before the end of the college year, Mabel Weller, of the class of 1920, and Lee Smith, Beta Theta Pi, of the University of Washington, were married at the chapter-house. Dorothy Flegel and Rose Smith were bridesmaids. The active members of the chapter were the other attendants.

Mary Irving, who was also graduated in June, 1920, was married on June 18 to Lyman W. Patton at the Irving home on the Boones Ferry Road, not far from Portland. Her sister, Louise, who was one of our sophomores last year, was her attendant and Carl Knudsen was best man.

The third June bride was Doris Slocum, who married Edgar Garbade, one of our Kappa brothers.

We have just received word that Mary Ellen Baily, one of our Eugene girls, is to be married to Harold A. Moore, also of Eugene, at the First Christian Church in Eugene, on September 4.

In the campus elections held last June, Alice Evans was elected one of the two senior women on the Student Council. She was also pledged to Scroll and Script, senior honor society. Ruth Austin is a Theta Sigma Phi pledge. Ruth is one of our star journalistic students and was awarded the second prize for the greatest number of unassigned stories turned in to the *Emerald*, the college daily newspaper, during the year. Nancy Wilson was elected editor of Women's League, and Doris Pittenger, president of Mask and Buskin, dramatic society.

During Junior Week-end we were awarded the silver trophy for the best decorated canoe entered by a girls' organization in the canoe fête. This cup becomes the permanent property of the winner only after it has been won three successive times, so we are going to work harder than ever next year.

Right now, with the opening of college less than a month ahead, we are thinking more and more about going back to Eugene and are going to try to make this year one of the most successful in the history of the chapter.

MARGARET DUNIWAY.

GOOD LIST OF HONORS

Gamma Gamma, Whitman College

Another commencement has passed, with all its attendant excitement and gaiety, and Gamma Gamma is scattered far and wide to rest and relax during the long, lazy summer days. But our memories of commencement are still very pleasant, and tinged with considerable satisfaction in Gamma Gamma's achievements for the year.

Of our five seniors, Lulu Holmes was president of the Women's League, the highest office for women on the campus; Florence Long house president of her dormitory, Martha Douglas president of the Y. W. C. A., and the rest members of the Order of Wailatpu, the new honor society, while two of them were also Phi Beta Kappas. But there is evidently to be a race for honors between them and the juniors, for of this supposedly flippant and care-free class Helen Van Huys, is the new president of the Women's League. Willena Long president of the Women's Self-Government, two others members of the Order of Wailatpu and another vice-president of the Y. W. C. A.

Having flourished these bouquets, I will now add a bitter pill. In scholarship we descended to second place among all the groups on the campus. Great was the wailing and gnashing of teeth when this was learned, but wait till next year!

Our annual June breakfast was held way up on a hill, where we could look far off across the beautiful Blue Mountains. In such surroundings we demanded a romantic ending, and we were not disappointed, for Helen Harper, one of our alumnae, announced her engagement.

The crowning event of the year was the all-college reception given by Gamma Gamma in honor of Miss Burr and Miss Pepoon, who were retiring from the faculty after long years of faithful service. Receptions are often stupid affairs, but this was pronounced by the many who attended to be "really delightful" in every way. We even enjoyed it ourselves and what higher praise could be given a reception?

Plans for fall are already maturing and promise a year of even greater achievement. The same to you all, sisters dear!

MARY SHIPMAN.

NINE NEW KAPPAS

Pi, University of California

Pi chapter is the happy reciprocant of nine pledges—Margaret Agnew, Berkeley; Ruth Armstrong, Berkeley; Wilda Hersheiser, Oakland; Virginia Martin, Los Angeles; Eleanor Moses, Los Angeles; Marion McCord, Berkeley; Elizabeth Parkinson, San Jose; Laura Pratt, Oakland, and Lois Raggio, Stockton.

There is little to be said of participation in campus activities since the semester is hardly under way.

However, much has been happening in the way of matrimony. Since college closed in May the following sisters have plighted their troth: Margaret Lowell, ex-'23, to Harold Sayre, '21, Delta Tau Delta; Madeleine Benedict, '20, to Le Roy Gimbal, '20, Kappa Sigma; Marie Kinkelin, '21, to Alfred Otto, ex-'22, Sigma Nu; Sara D'Ancona, '19, to Grant Hunt, '19, Beta Theta Pi; Norma Thayer, ex-'21, to John Raggio, '21, Zeta Psi; and Virginia Turner, ex-'22, to Gerald Barnard, '21, Kappa Sigma.

KATHRYN BURNAND.

In Memoriam

LUCY HART-ROSS

April 10, 1880—August 4, 1921

Initiated into Chi chapter of Kappa Kappa Gamma,
September 27, 1897

Lucy Hart (Mrs. Hiram E. Ross) passed away on August 4, after a short illness. Her going came upon us so suddenly that it is hard for her hosts or friends to realize it.

Lucy Ross was blest with an unusual graciousness of manner; she had a certain poise, and a gentle dignity that made her much in demand wherever women were working together; but most of all she had a simple, lovable nature that made real friends for her everywhere. Her loss is irreparable, not only to her family and to her old friends, but to the many others outside her immediate circle, whom her life had touched.

ELLEN JANNEY-BROWN, *Chi*.

MARY KIFER ALBIZZI

Mary Kifer of Beta Zeta, who married the Marquis Degli Albizzi whom she met when she was with the Near East Relief in Armenia, was drowned last summer in Italy.