

the Key

KAPPA
KAPPA GAMMA

Volume 106, No. 2

Summer 1989



Kappa Kappa Gamma: A Lifetime Investment

by Kay Smith Larson, BII—Washington, Fraternity President

Spending time this year with alumnae in Hawaii, Colorado, Texas, Iowa, Virginia, Montana, Washington, Arizona, Kansas, Indiana, and British Columbia has been a very special privilege. I have welcomed the opportunity to thank these wonderful alumnae for all they continue to do for Kappa and to widen my circle of Kappa friends. It is now a pleasure to say "thank you," on behalf of your Fraternity, to each of our 110,000+ alumnae members. Reinvestments of time, energy, and money strengthen our sisterhood and the holdings for all. Continuing alumnae support guarantees lifetime returns on our initial membership investment. While the undergraduate mem-

bers are our lifeline and the key to our future, it is alumnae who sustain the Fraternity and insure the future. In her own way, each alumna continues to give "loyalty, sincerity and friendship" to her Fraternity while reaching out into the community and giving service in the name of Kappa. During the past biennium, alumnae reported over 30,000 hours in community service, contributed approximately \$996,000 — half to the Fraternity and half to their communities, and over \$100,000 to chapters. The Kappa experience has given each alumna a broad and firm foundation for a lifetime of learning and growing.

Have you ever thought about the fact that the undergraduate years represent the shortest phase of our Kappa membership? We each assume a lifetime membership and commitment as an alumna, and have the opportunity to participate in a variety of ways. The extension of Kappa ideals beyond the chapter is an important aspect in the fraternity experience.

Alumnae participation may include: Keeping up-to-date on Fraternity activities by reading *The Key*; buying magazines through the Rose McGill Magazine Agency; writing references — alumnae references introduced over 18,000 rushees to our chapters last year; presenting the best of fraternity life to rushees and non-Greeks to counteract negative media coverage; attending a chapter or class reunion; celebrating Founders' Day with a local alumnae group or chapter; notifying Headquarters of name, address, and career changes; contributing to the Fraternity Loyalty Fund, Adelphe Campaign, Heritage Museum, or one of the Philanthropic Funds; living by the ethical values agreed to at the time of Initiation; networking



From left: Anne Sherwood Kelley, ΓΞ—UCLA & Π^Δ—Calif., Berkeley; and Martha Helmers Groebe, ΓΑ—Kansas State, Co-Presidents of the Hawaii Alumnae Association; Kay Smith Larson; and Vera Lewis Marine, ΔΖ—Colorado College, Director of Alumnae.

with Kappa alumna new to the community or in a job search; helping a Kappa friend in the time of trouble or stress; playing bridge or taking a tour with a group of Kappas; joining other Kappa mothers to form a preschool play group; hiring a Kappa...the opportunities are unlimited.

As you can see, an alumna can maintain her lifetime membership in her own way without living in an organized alumnae area or working with a chapter. There are additional special opportunities for participation determined by geography; at any given time we find approximately 5,500 alumnae serving as alumnae officers, Advisory Board and House Board

members, or as a part of Kappa's Official Family in an elected or appointed position.

Kappa is always there for you and I know you are always there for Kappa! Each alumna of our international organization "is there" in her own way — determined by interests, geographic location, available time, and capabilities. I hope each of you realize that your contributions are sincerely appreciated and that they definitely make a difference.

Kappa Kappa Gamma continues to meet the needs of today's women, just as it has for the past 119 years. We offer genuine friendship, so needed in the world today, while providing opportunities for personal growth and development. Take a minute to think of the skills and personal qualities you have developed through the years. Whether it was in your chapter days or from opportunities which have come along during your alumnae years, hasn't Kappa played an important part in this development? How often we hear Kappas say that they have received far more from their membership than they have given. Kappa bonds are truly a blue chip investment.

With admiration and gratitude for all your accomplishments and devotion to your Fraternity, this issue of *The Key* is dedicated to our alumnae members.

"Being a friend comes naturally to you.

It is taking a moment out of your life to give of yourself by bringing comfort, encouragement and peace.

You do it graciously...and I thank you."

Linda DuPry Moore

the Key

KAPPA
KAPPA GAMMA



ON THE COVER:

Watercolor by Lucretia Leonard Romey, Δ. Profiles of Beta Beta^Δ—St. Lawrence and Canton, NY, Kappas representing that the Fraternity is its members...past, present, and future. Feature story, Kappa Is Always There for You, begins on page 18.

STAFF

Editor

Cynthia McMillan Lanford, ΓΠ

Business Manager

J. Dale Brubeck, ΓK

Feature Editor

Lois Catherman Heenehan, BΣ

Advertising Manager

Susan Frech Schmitt, EH

Associate Editor

Kathleen Powers Randall, ΓΠ

Alumnae Activities Editor

CiCi Williamson, ΓΨ

Editorial Assistant

Sydney Finnell Cummings, ΓΠ

Illustrators

Lucretia Leonard Romey, Δ

Louise Danforth

Muenstermann, ΓI

Correspondents

Chari Baudry, BΠ

Robin Whitfield Brown, ΔΨ

Mary Yeates Meriwether, ΓΠ

Donna Rose, ΓΞ

Fraternity Vice President

Jennie Miller Helderman, ΓΠ

Chairman of Publications

Gay Chuba Barry, ΔA



COLLEGE FRATERNITY EDITORS ASSOCIATION

FEATURES

Province Meetings - Family Reunions6

Carry the Spirit22

Kappa Is Always There for You18

DEPARTMENTS

Fraternity News2

Alumnae Activities8

In Memoriam32

Profiles14

Heritage29

Through the Keyhole34

SPECIAL SECTIONS

Adelphie Campaign30

Membership Data Form27

CHOICES

Profile of a Business Winner.....24

Postgrad Makeover25

*The first college woman's fraternity magazine,
published continuously since 1882.*

The mission of *The Key* is:

To inform, inspire, and challenge

To sustain and nurture member loyalty and interest

To recognize individual, group, and Fraternity accomplishments

To provide a forum for an exchange of information and opinions

To be a permanent record.

Copyright © 1989 Kappa Kappa Gamma Fraternity. Printing and Design by EBSCO Media, Birmingham, AL. KKG Headquarters, P.O. Box 2079 (530 E. Town St.) Columbus, OH 43216

For advertising rates contact Susan Schmitt, Advertising Manager; 4001 Wetherburn Way; Norcross, GA 30092; (404) 441 0946

The World of Kappa Extension

Welcome to Kappa's exciting world of extension. This challenging successful program has been a Fraternity priority since the beginning of Kappa Kappa Gamma in 1870. As early as 1871, our first members began to offer the bonds of sisterhood to women on other campuses. One hundred and nineteen years later, Kappa Kappa Gamma stands proud of its active chapters on 119 college campuses throughout Canada and the United States. A conservative but well planned approach to extension ensures the continued growth of the Fraternity and extends the opportunities of membership to more women with shared values.

Extension is the process of establishing new collegiate chapters on campuses where we do not have an active chapter or re-establishing an inactive chapter of the Fraternity. The extension procedures are fascinating: orderly according to Kappa and National Panhellenic Conference guidelines, but also complex due to the uniqueness of each campus situation.

A new chapter may be formed through a Colonization Rush or by pledging the members of a campus local sorority which has petitioned Kappa. This is accomplished



"And then one day more leaves began to grow, and after a while more flowers came. . ."

through approval from the proper authority, which may be the College Panhellenic Council, the administration of the university or college if no College Panhellenic exists, or the National Panhellenic Conference Extension Committee — depending upon the campus situation. The new group affiliated with Kappa is a colony until it is installed as a chapter.

Our Fraternity Council has established the following criteria before the extension process can begin. Our Council considers the QUALITY of the university or college, its academic emphasis, its support of the Greek system, present and projected enrollment record, calibre of student, security of the campus, availability of comparable meeting/housing facilities, strength and cooperative attitude of the Panhellenic, favorable rush statistics, and potential for growth. Since area support is essential for successful extension, Kappa alumnae are contacted for their knowledge, opinions, and recommendations about the institution. Their interest in a new chapter is vital because they will be called upon to serve as members of the Advisory and House Boards, or to assist in other ways. Before agreeing to establish a new chapter, the Council determines if the cli-

mate is favorable for extension by asking an officer or Fraternity team to make a visit to the campus and local alumnae.

When Kappa is notified by the proper authority that extension will occur, and if a favorable report has been given as a result of the official visit, the Council votes to enter the process, and submits the Fraternity resource materials and other information required in the selection process. From those NPC groups notified of the extension process, several groups, usually three, are invited to make formal presentations to the College Panhellenic Extension Committee.

A team of Fraternity representatives, area alumnae, and actives from nearby chapters present Kappa's story. In addition to setting up displays of our many resource materials, the presentation team provides detailed explanations about Kappa's outstanding philanthropic projects and scholarships, our commitment to cooperating with Panhellenic, the outstanding contributions of our chapters and alumnae groups to campus and community life, our rich heritage, and the strong support system the Fraternity offers our chapters. Included in this support system are the Chapter Consultant (CC) — a Kappa graduate student who will work with the



Fraternity Team visiting Simpson Campus.



Fraternity President Kay Larson telling the history of the Ware Candlesticks to Charter Members of Zeta Tau Chapter—W & L at Installation.



representation team at the University of North Texas. In front: Carol Nichols, ΔΥ—Georgia, Chairman of Finance Committee. From left, Julie Love, ΖΝ—Calif., San Diego, Traveling Consultant; Marilyn Bosse Whiteside, Δ—Indiana, Theta PDA; Marian Klingbeil Williams, Θ—Missouri, Chairman of Extension; Mariann Wilson Lyon, Ε—Texas, Chairman of Advisory Boards; Gail Simpson Owen, Α^Δ—Monmouth, Director of Personnel; Jenny Jeter, ΕΑ—Texas Christian President; CiCi Crane, Δ—SMU President. Not pictured is Mari Hill, ΕΥ—Baylor President.

new chapter for the first two or three years while furthering her education, and the Coordinator for Chapter Development (CCD) — an alumna with broad Fraternity training and experience who will supervise the operation of the new group for at least three years.

When all presentations have been made, the proper authority makes its final decision and notifies the

NPC group which has been selected.

Interest in being Greek is at an all time high. Extension is taking place on campuses which have a strong Greek heritage because they need more groups to accommodate all the women interested in membership. Without extension on those campuses, pledge classes will grow to an unmanageable size. Many small private and state institutions are inviting NPC groups for the first time, seeking to provide an added dimension to their students' college experience and perhaps to increase or stabilize enrollment. Formerly all-male schools have opened their doors to women who then decide that they want the Greek experience.

It is interesting to note that from June 1988 to May 1989 Kappa received letters or phone calls of inquiry from 153 separate universities and colleges, which expressed interest in forming new chapters. From those 153, by mutual selection between the College Panhellenic Council and our Fraternity we have two new chapters; one colony will be established this fall. The extension process for each of these three new additions to the Kappa family of chapters was uniquely different.

Zeta Sigma Chapter—North Texas, was colonized in November, 1988. Members of Kappa Theta Delta local sorority desired affiliation with an NPC group and from



Fraternity President Kay Smith Larson (seated) with Gail Simpson Owen, Α^Δ—Monmouth, Director of Personnel, and Zeta Sigma Chapter—North Texas President Kathy Thompson pictured before the Installation Banquet.

the three groups selected to make presentations, Kappa was selected. On April 22, 1989, this colony of 79 undergraduates and four alumnae was installed at this excellent state school in Denton, TX, which has an enrollment of 24,500 students and is the fifth largest university in the state. Kappa proudly takes its place in a long-standing Panhellenic system which includes Alpha Delta Pi, Alpha Phi, Alpha Xi Delta, Chi Omega, Delta Zeta, Pi Beta Phi, Zeta Tau Alpha, Alpha Kappa Alpha, and Delta Sigma Theta.

Washington and Lee University in Lexington, VA, is an outstanding private school which opened its doors to women four years ago. In 1988 NPC groups were notified that a Greek system for women would be formed in January, 1989. Kappa



Charter members of Zeta Sigma—North Texas.



A Presentation display table.

joined Kappa Alpha Theta and Chi Omega as the three NPC groups selected to begin a Panhellenic on that campus. A Colonization Rush was held for all women students in late January and the 87 charter members of Zeta Tau Chapter were initiated when the chapter was installed on May 1, 1989.

According to Fraternity history, Omicron chapter was on the Simpson College campus from 1880 until 1890. Kappa was notified that this small private liberal arts school was interested in our return to this campus in Indianola, IA, so a study was made to determine the advantages of re-establishing that chapter after such a long absence. The formal presentation was made and Kappa was invited to become a part of the Panhellenic composed of Pi Beta Phi, Alpha Chi Omega, and Delta Delta Delta. Colonization Rush will be held on October 13, 1989, and the chapter will be reinstated as Omicron Deuteron next spring.

Extension plus membership selection in our chapters are the life blood of our Fraternity. Our growth will come from extension as the rush numbers and enrollment on our campuses stabilize. A benefit of our recent extensions has been an increase in alumnae interest which is heartwarming to observe. We have a responsibility to the future of Kappa Kappa Gamma by placing chapters on campuses which will be strong and viable institutions for untold years to come.

The Fraternity needs your input on universities and colleges which meet the criteria necessary for success. Quality not quantity is our desire as the selection process continues.

The members of Kappa Kappa Gamma are committed to following the Unanimous Agreements of the National Panhellenic Conference.

NPC UNANIMOUS AGREEMENTS PERTAINING TO EXTENSION

III. Standards of Ethical Conduct

National Panhellenic Conference believes that it is unethical for an NPC fraternity to contact a school and/or its students concerning extension when the school fails to meet the NPC requirements; or to establish a chapter where the school

administration has specifically stated that it disapproves the establishment of women's fraternities on that campus.

It is unethical for an NPC fraternity to establish a chapter on a campus without approval of the proper authority. Proper authority is the College Panhellenic Council. On campuses where the National Panhellenic Conference operates within an interfraternity organization the groups which belong to the National Panhellenic conference shall, within themselves, constitute the proper authority. On campuses where the college or university administration recognizes women's fraternities and where no College Panhellenic exists, the administration shall, until such time as the College Panhellenic is created, constitute the proper authority. On campuses where the college or university administration does not recognize women's fraternities and where no college Panhellenic exists, the National Panhellenic conference Extension committee constitutes the proper authority.

When a local campus group is applying to any member group of NPC for a charter, no other member of NPC shall approach that group directly or indirectly.

Any National Panhellenic Conference fraternity whom a local is petitioning shall insist that such group conform to college Panhellenic conditions as to rushing, pledging, and initiation where it is established.

If there are any questions about extension procedures as listed by Kappa or NPC, please contact the Chairman of Extension, the Fraternity President, or any member of the Kappa NPC Delegation.

— Marian Klingbeil Williams,
Θ—Missouri,
Chairman of Extension

Extension News Bulletin

Announcing

Zeta Upsilon
Georgia Southern College
Statesboro, Georgia

Colonization Rush:
Sept 26-29, 1989

References should be sent to:
Carol Armstrong, Director of
Membership;
4719 Eagles Nest Circle;
Kettering, OH 45429

Kappas Attend AFA

AFA — can this be another acronym in the Kappa alphabet soup? Surprisingly enough, other associations outside Kappa rely on abbreviations and jargon also.

The Association of Fraternity Advisors (AFA) is an organization comprised of Greek affairs professionals as well as other college student personnel positions. It is an association of colleagues communicating and working together to promote Greek systems throughout the country.

Last December the Association of Fraternity Advisors met in San Francisco, California, for its annual meeting at the Burlingame Hyatt Regency. AFA recognized the efforts of its professionals, and

Kappa is proud that **Kim Braun Padulo**, ΕΠ—Calif, Riverside, and **E. Ellen Thomas**, ΓΡ—Allegheny, were honored. The AFA's Distinguished Service Award recognizes college student personnel professionals who exhibit high professional standards and achievements in Greek advising, as well as outstanding achievements in other areas that include: campus programming, development and research activities, and service to the college community. Kim Padulo, Panhellenic Adviser at San Diego State University, was awarded this high accolade for the Western region.

Recognition was also given to Ellen Thomas, Assistant Director of Student Activities at the University of California, Irvine, for her work as liaison to the Western Regional con-

rence and coordination of the eastern Region of Greek Advisers. Len has worked diligently to organize communication among the eastern advisers and recruit others to join AFA. Her dedication has helped these Greek advisers remain current with college trends and concerns.

Other Kappa Greek advisers attending the conference included **Colleen Blough**, ΔO—Iowa State, Hellenic Adviser—University of Washington; **Mary Carnegie**, K—Miami, Assistant Dean of Greek Affairs—University of Florida; **Carolyn McFarland**, H—Utah, Coordinator of Greek Affairs—University of Denver; **Amela Anthrop Mounce**, A—Purdue, Assistant Dean of Students—University of Central Florida; **Judith Farnham Preston**, —Boston, Coordinator of Greek Affairs—University of Connecticut; **Dr. Kathleen Powers Randall**, I—Alabama, Associate Director of Student Life—University of Alabama; and **Cherry Moslander**

Ridges, DH—Utah, Greek Adviser—University of Utah.

Representing Kappa were **Kay Larson**, BII—Washington, Fraternity President; **Marjorie Matson Converse**, ΓΔ—Purdue, NPC Delegation; **Phyllis Brinton Pryor**, BM—Colorado, NPC Delegate; and **Juliana Fraser Wales**, BN—Ohio State, Director of Field Representatives. While AFA is a professionals'

organization, it is first membership in Kappa Kappa Gamma which leads so many to become a part of this profession. The KKG foundation of a positive Greek experience is evident as members continue to promote Greek life and help others to experience it.

— Colleen Blough,
ΔO—Iowa State

Deferred Rush

The listed campuses defer Formal Rush for freshmen until either late in the fall term or after first term. Parties and orientation sessions begin in early fall for some. Please support the rushees and chapters by sending references EARLY.

Allegheny C.
Babson C.
Baylor U.
Bucknell U.
Centre C.
Colgate U.
Cornell U.
Dickinson C.
Duke U.
Emory U.

Hillsdale C.
Indiana U.
Lafayette C.
Lawrence U.
Massachusetts, U. of
Puget Sound, U. of
Purdue U.
Richmond, U. of
Rollins C.
St. Lawrence U.

Southern Methodist U.
Stanford U.
Vanderbilt U.
Villanova U.
Virginia Tech U.
Virginia, U. of
Washington and Jefferson C.
Washington and Lee U.
Yale U.

KAPPA KAPPA GAMMA

Has Found The Answer To A Very Difficult Question...

The future. We all have dreams of what it will hold for our families. But can those dreams be protected?

Yes. With Term Life Insurance. KKG has designed a program that helps you to secure your family's financial future now—while you're still dreaming it.

Buying KKG Term Life Insurance is fast, easy, confidential and more affordable than you probably imagine.



Yes, send information on the Kappa Kappa Gamma Term Life Insurance Program. 77800

Name _____

Address _____

City _____ State _____ Zip _____

Daytime Phone _____

Mail to: KKG TERM LIFE INSURANCE
P.O. Box 907
Minneapolis, MN 55440-9863

Or Call TOLL-FREE 1-800-328-3323
In MN call (612) 588-2731



Province Meetings—Family Reunions

by Vera Lewis Marine, ΔZ—Colorado College, Director of Alumnae

Lucy Quist Mullins, BPΔ—Cincinnati, synthesized the spirit of Province Meetings in her devotional at Mu Province Meeting: "I love these 'family reunions' — of sisters I've never met but always loved — these opportunities to relive our common history — experiences shared in widely distant places, in amazingly different eras — miles and years apart, but magically bound together

by ritual and memory. All geographic boundaries and generation gaps disappear until we are as one. The whole of Kappa heritage is brought into sharp focus and reborn in a single weekend.

"The strength and energy generated through these timeless bonds and gathered in this room today could light the world without striking a single match. But we must harness this energy — channel this

love — to keep our sisterhood strong and vital in this ever changing world."

These eloquent words expressed the sentiments of more than 2500 Kappa actives and alumnae who gathered at the 17 Province Meetings held this spring from the Southwest and Northwest to the heartland, and from New England to the deep South.

"Trendsetters — A Step Ahead" was the theme. Each province heard about the state of the Fraternity, the addition of a Province Director of Chapters and/or a Province Director of Alumnae in most provinces to lighten the volunteer workload, the Long Range Planning Committee study of alumnae club and association structures, and the status of the Loyalty Fund and Adelphe Campaign.

Workshops for actives and alumnae gave everyone an opportunity to share ideas and learn new methods of doing what we do...better. Special events ranged from an alumnae Fireside under the stars in the Arizona desert to a dinner on a suspension bridge over Texas' Brazos River...from popcorn and videos at a



Delta "Proviteers" who have attended three or more Province Meetings recognized at their Greencastle, IN, meeting.



Beta PM, Pittsburgh, PA, featured the workshop "You Are Leading, but Are They Following?" Participants designed and cut out snowflakes.



Kitty Butts Pattison, BY—West Virginia, Rho PDC, presiding at a business meeting.

apter house to songfests and sing-
longs, and presentations of fleur-
-lis pins representing 50, 65, or
years of Kappa life. Speakers
ch as Kay Waldo, Ω -Kansas, co-
author of *About Time! A Woman's
Guide to Managing Time*, and Dr.
on Beer, vice president of student
rvice, Oklahoma State Universi-
were featured.

Chapter and alumnae awards are
ways one of the highlights of any
Province Meeting. The closing
meetings gave the Province Officers
the opportunity to share with their
members the "State of the Province"
and to express their pleasure in
assisting with the development of
the province chapters and alumnae
groups.

Province Meetings offered every-
one who attended an enjoyable,
invigorating, rejuvenating, and
SPECIAL weekend with her Kappa
sisters. The active-alumnae inter-
action was the positive result of the
moving atmosphere that renews
Kappa spirit and strengthens our
common bonds; Kappa knows no
age barriers. As members returned
to their chapters, clubs, and associa-
tions, they surely must have
agreed with Lucy Mullins' remarks
at Mu Province Meeting: "We owe
to ourselves and each other to do
more. Do more than exist — LIVE!
Do more than touch — FEEL! Do
more than look — SEE! Do more
than hear — LISTEN! Do more
than talk — SAY SOMETHING!"



Ψ —Baylor Pickers entertain Theta
Province in Waco, TX.



Rho actives busy with a workshop assignment in Hartford, CT.



Workshop Leaders after conducting a game of "Membership Jeopardy" during N PM in Nashville, TN. From left: Sharon Gafford Ritz, BΘ—Oklahoma; Susan Frech Schmitt, EH—Auburn; Kay Scholberg Weeks, ΔΦ—Bucknell.



Omicron—Twin Cities, MN

The Alumnae Hoot Line

by CiCi Williamson, ΓΨ - Maryland

Dr. Elizabeth Briant Lee, ΓΕ—Pittsburgh, visiting scholar in anthropology at Drew University, Madison, New Jersey, has served as American Specialist Lecturer for the U.S. State Department in Bangladesh, India, Lebanon, Syria, Austria, Italy, The Netherlands and Iceland. She has done extensive anthropological field work in Ireland, Northern Ireland, Sicily and Italy.

On March 18, Dr. Lee was honored with an award at the 59th annual meeting of the Eastern Sociological Society held at the Lord Baltimore Hotel, Baltimore, Maryland. She has served on the faculties of the City University of New York (Brooklyn College), Wayne State University, Hartford Theological Seminary, Connecticut College for Women, Catholic University of the Sacred Heart in Milan, Italy, and Fairleigh Dickinson University. She has conducted research at Drew University since 1970.

Her book publications include *Personnel Aspects of Social Work*, *Eminent Women: A Cultural Study*, *The Fine Art of Propaganda*, *Social Problems in America*, and *Marriage and the Family*. Also an avid painter, Dr. Lee's paintings have been exhibited in many cities.

Helen Robson Walton, ΒΘ—Oklahoma, has been elected to the post of vice chairman of the Board of Trustees for the Presbyterian Church (U.S.A.) Foundation, becoming the first female ever to hold the position. It is the largest church foundation in the United States, managing more than \$650 million in assets for the benefit of the Presbyterian Church. Helen serves on many local and state advisory boards, including the Advisory Board of the University of Arkansas' School of Business, the Governor's Commission on Adult Literacy, and the New York City-based Child Care Action Campaign. She helped found a Bentonville,



Anne Lucas Gere,
ΓΒ—New Mexico

Arkansas, child care center and served on a state government task force which has produced legislation supporting day care centers. Helen earned her bachelor's degree in finance from the University of Oklahoma.

Susan Gordon Weinberger, ΔΞ—Carnegie-Mellon, is president of the Norwalk, CT, Symphony Society which raised a million dollars to refurbish the concert auditorium of City Hall. Susan owns Partnership Consultants, a firm which designs school and business partnerships in the United States. She is also Public Affairs Officer, Norwalk Public Schools. Her daughter, Lisa Weinberger, is president of Zeta Theta Chapter—Trinity College, where her mother has served as a member of the House Board.

Eileen Ferrari, ΒΨ—Montana, was recently named Director of Sales and Marketing at the Sacramento Hilton Inn. Prior to joining

the Hilton, Eileen held a similar position at the Radisson Hotel Sacramento. As Food Department Manager for Marine World Africa U.S.A. in Vallejo, California, Eileen was responsible for the park's restaurant operations and over 400 employees.

Anne Lucas Gere, ΓΒ—New Mexico, conducted a 16-week training course for the Police Mounted Patrol of the Albuquerque Police Department. Anne, who began riding at the age of five, trained inexperienced officers and horses information drill, trail riding, equipment care, *dressage*, and crowd control under adverse conditions. At completion, the unit was assigned to patrol duty in Albuquerque and has been an instant hit with the public as well as a highly visible deterrent to crime.

Prior to moving back to her home in Albuquerque, Anne had her own school in California teaching Western and English riding. She founded the New Mexico Dressage Society in 1974. *Dressage* is an equestrian event in which riders use seat and leg signals to direct actions of their mounts.

Suzanne L. Sharp, Φ—Boston University, works for Turner Broadcasting System, Inc., in Atlanta in the capacity of vice president of travel, housing and hospitality for the 1990 Goodwill Games. She previously was director of corporate travel and location services for Columbia Pictures. Suzanne holds a Bachelor of Arts degree in sociology from Boston University.

Barbara Leaman McDougall, ΒΨ—Toronto, has won re-election to the Canadian Parliament as a member of the Conservative Party. She was appointed Minister of Employment and Immigration in 1988 and has served as Minister Responsible for the Status of Women since 1984. Living in Toronto, Barbara was 1984-1986 Minister of State (Finance) and Minister of State (Prioritization), and Minister Responsible for Regulatory Affairs from 1986 to 1988.

Ellen Sweeney-Clawson, ΒΠ—Washington, is the field director of the University of Washington Alumni Association. She works with satellite clubs of the group that

in different areas of the country and, as such, is able to keep in touch with other Kappas where she travels. A speech communication and elementary education major, Ellen is also helping to produce a videotape about the University which can be used for off-campus alumni groups or the Association self.

Cynthia Ellen Davis, T—USC, is project manager for twenty-four commercial buildings valued at \$50 million. As vice presi-

dent-real estate for Sylmar Development Company, Inc., in San Diego, Cynthia does project development from the acquisition phase to management and sales. She is President of the San Diego Alumnae Association and an officer in various U.S.C. alumni organizations.

Ann Daniels Love, ΔZ—Colorado College, wife of former Colorado Governor John Arthur Love, was presented with a 1989 Citizen of the West award by the National

Western Stock Show and Rodeo Association. She has been on the boards of numerous organizations over the years, including The Denver Zoological Foundation, the Colorado Council on the Arts and Humanities, Denver Art Museum and Colorado Women's College. Ann founded Historic Denver, Inc., one of the largest local, non-profit historic preservation groups in the nation, whose first project was saving the Molly Brown house, now a popular museum.

Reunions: By Chance and By Design

by CiCi Williamson, ΓΨ—Maryland

We meet in twos; we gather in hundreds. Like swallows returning to Capistrano, Kappas instinctively gravitate toward chapter facilities and each other. Sometimes it is a meeting by chance and sometimes it has been a year in the planning. Sometimes it is two Kappas and sometimes it is an entire pledge class who have kept in touch through the years. But always it is because of a special feeling inside we know as sisterhood. Every reunion is unique. Perhaps you will see yourself in one of the following reunion stories received by *The Key*.

REUNION STORY #1:
Longest Running Reunion on a Continuing Basis. After several decades of reunions, 20 of the 21 surviving members of the 1937 pledge class of **Sigma Chapter—Nebraska** received their 50-year pins together at a Kappa luncheon in Lincoln. Born at the end of World War I, these Kappa pledges lived through the Depression, lost four husbands in World War II, had 60 children, and are now grandmothers to at least 65 grandchildren and one great grandchild. Their first reunion was in 1962, when 19 of them took over one floor of the Cornhusker Hotel in Lincoln. A decade later, the Lincoln *Star* newspaper wrote a story about their 1972 reunion. They had such fun, they got together again in 1978. In 1983, the out-of-town arrivals were greeted at the Lincoln

Airport by a cheering contingent. Tom Osborne, the Nebraska football coach arriving on the same airplane, couldn't quite understand why a crowd of elderly women was

cheering as he exited from the craft. They weren't cheering for him but for their Kappa sisters. Each time one of the out-of-state members travels to Omaha or Lincoln, her



Sigma—Nebraska 1937 pledge class . . . then.




Sigma—Nebraska 1937 pledge class . . . now.

Alumnae ACTIVITIES

pledge sisters within a 100-mile radius come together for lunch. Credit for this long-going reunion goes to the pledge sisters who still live in Nebraska. As Louise Benson Ball writes, "When we sign ourselves 'Loyally,' we're serious."

REUNION STORY #2: Longest Odds. All right, you really can't call this a reunion, but it's a good story. Three couples from three different states are assigned a table for six, second seating, on the *Mississippi Queen* seven-day trip from New Orleans. What are the odds that all three wives, none of whom knew each other, would be Kappa sisters? **Shirley Smalstig Lyon**, ΔΠ—Tulsa, was looking at the Beta ring worn by one of the men. She remarked that her Kappa house was just across the street from the Beta house. His wife, **Martha Crossland Heath**, P^A—Ohio Wesleyan, excitedly revealed that she was a Kappa, too. About that time, **Mary Beth Stewart Wedberg**, ΔZ—Colorado College, tuned in on the conversation



ARE YOU AN OWL OUT ON A LIMB? WHERE ARE YOU? WE'VE BEEN MISSING YOU!

Please take a moment to complete the information form and send it to Gene Omundson, Director of Alumnae Assistant. She will then contact you and is looking forward to hearing from you.

YES, I WANT TO KNOW MORE ABOUT KAPPA ALUMNAE OPPORTUNITIES

NAME _____
(First) (Middle/Maiden) (Last) (Husband's Name)

ADDRESS _____
(Street) (City) (State) (Zip)

TELEPHONE (_____) _____ CHAPTER _____ INT. DATE _____
(Area)

MAIL TO: Mrs. Roy T. Omundson, P.O. Box 1031, Quechee, Vermont 05059

and announced that she also was a Kappa, and that she had just bought a key-shaped cookie cutter at the ship's last stop in Vicksburg, Mississippi. To further the coincidence, two of the four daughters of the group are Kappas and two of them are named Karen. Mary Beth says, "If we had been wearing tiny recognition keys, we would have discovered each other sooner, but better

late than never. From now on, I intend to "show my colors" on trips.

On a different cruise ship, a Kappa wearing Fraternity jewelry found this to be true. **Nancy Thompson Tipton**, Θ—Missouri, was wearing a fleur-de-lis pin on a *Royal Viking* cruise to Japan. Another passenger, **Gayle Hartness**, ZΓ—Centre College, recognized the pin and asked if Nancy

KAPPA KAPPA GAMMA Invites You To Cruise The Jewels of the Caribbean

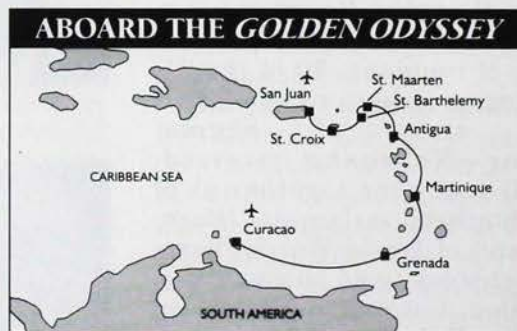
Departing March 5, 1990

Next winter, Kappa Kappa Gamma invites you to get away and experience the Caribbean as only Royal Cruise Line can show it to you. Just imagine the islands off the beaten track, where you can truly find the tranquil sense of ease that is the Caribbean's most precious gift. You'll cruise to the sun-drenched ports of **San Juan, St. Croix, St. Barthelemy, St. Maarten, Antigua, Martinique, Grenada** and ending your cruise is **Curacao**.

Royal Cruise Line, famed for its warmth of service, excellent entertainment and superb cuisine invites you to experience the finest in luxury cruising.

Special Group Fares and Bonus Amenities!

Special "Early Bird" Discount Fares begin at just **\$1304 per person**. This includes **FREE Airfare** and a **25% discount** if booked by **September 30, 1989**. While onboard the gleaming white *Golden Odyssey*, passengers will enjoy two hosted receptions, souvenir name badges and one group photo per couple.



So don't hesitate! For a detailed brochure or more information on this exciting cruise, call Marjie Meade at: 1-800-554-7673 or Patricia at Royal Cruise Line to make your reservation. Royal Cruise Line's toll-free numbers are: 1-800-227-4534 (National) or 1-800-792-2992 (California).

**Royal
Cruise
Line**



Kappas living in Peru

ere a Kappa. You know the answer.

REUNION STORY #3: Most dedicated Reunion Chairman. For the past 24 years, Cynthia Huthbertson Pringle, Delta Gamma—Michigan State University, has kept her 1962 pledge class in touch with each other. Each year in March, she sends a request for news to each member, which is returned to her along with contribution for mailing and copying costs. All letters are duplicated and sent to each contributor.



Omega—Kansas 1942 initiates arriving at Hilton Head for a reunion planned at the Omega Centennial Celebration. "Some of us had not been together for years. Once we saw each other it was just like all those years ago when we lived together in the Kappa house. We were content to just be together for five days; in fact we only dined out once," said Patsy Piller Shelton.

"Cince" has used this method of communication to organize four reunions. This year's newsletter is announcing the 25-year reunion to be held in 1990. Writes Mary Hunsberger Votruba, "For many of us, this has been the only 'reminder' that we are Kappas and the only feeling of sisterhood in an otherwise very hectic twenty-five years."

REUNION STORY #4: Most Pledge Classes at a Single Reunion. At the University of Maryland's Student Union ballroom, seven Gamma Psi classes from 1962 through 1968 had a dinner dance attended by more than 100 people. Kappas came from fifteen states. Be Ge Smith Bramley traveled the farthest, more than 5000 miles from her home in Hawaii. Hattie Cooper brought as her date Jay Key (his real name!), who was the "Kappa Man" at the 1966 Gamma Psi formal. Music was provided by Peggy Castle, also a Gamma Psi, who owns a disc jockey business. Julie Jones Lewis had special favors made — coffee mugs with the Kappa crest and reunion date. Reunion chairman Carol Cheney Williamson collected humorous anecdotes from sisters about sisters living in the Kappa house, which



EXCLUSIVE OFFERS

Created by Kappas! Great prices!

PADS FOR LIST MAKERS: Complete your daily "things to do" list on our narrow 4 1/4 x 11" pads titled "Key Agenda" (1403K) or "Fleur-de-lis" (1404F). Great for shopping! Super thick: 150 sheets. Specify pattern.

NUMBERED LISTS . . . two thick pads for \$6.50

RULED WRITING TABLETS (8 1/2 x 11"), our best sellers, are priced for daily home & office use. Double as inexpensive stationery. Popular blue key border (1381K) or new French-styled blue & gold fleur-de-lis (1383F).

RULED PAD-50 sheets. Specify pattern . . . 4 for \$8.50

ENVELOPES coordinate with ruled pads. Business size.

Key envelopes (1409K) 40 for \$4.60

Fleur-de-lis envs. (notshown) (1415F) . . . 40 for \$4.60

RECIPE CARDS Foldable blue and gold 'fleur-delicious' design. 5x6" (1495F) 50 for \$4.90

INVITATIONS in blue and gold are appropriate for any occasion. 4 1/4 by 5 1/4" With white envelopes.

FLEUR-DE-LIS INVITES (1483F) 25 for \$5.50

POST CARDS are identical to invitations, only without words. Reverse side includes blanks for address, postage.

FLEUR-DE-LIS POST CARDS (1486F) 20 for \$3.75

SPECIAL GIFT ASSORTMENT

We'll send quickly—anywhere in U.S.!

Perfect for new pledges, initiation, or remembering a special alum friend! Choose from Key border or fleur-de-lis pattern with its Country French appeal. Includes two 8 1/2 x 11" ruled pads, one thick list pad, 20 envelopes.

Great price! Quick shipment! \$9.50

Exclusive custom gift wrap \$1.90

THE KEY SOURCE

Division of the Need To Know Inc. Publishers
P.O. Box 3458/Peoria, IL 61614

All items produced by Kappas!

800-441-3877 (309) 691-3877

SHIPPING & HANDLING to single location

Up to \$9.99: add \$1.95 \$10.00-19.99 add \$2.95

\$20.00-\$34.99 add \$3.90 \$35.00-\$49.99 add \$4.20

\$49.99-\$65 add \$5.60 \$65.00-over: call for quote.

MASTER CARD or VISA Illinois add sales tax

ASK FOR OUR FREE CATALOG Includes key, fleur-de-lis, & iris greeting cards, stationery, napkins, gift wrap, stickers, and more! Personalization available on many items.

Alumnae ACTIVITIES

she read to the group. Each class assembled to have its picture taken and all vowed to get together for more reunions. You might wonder why the Gamma Psi's wanted to include so many pledge classes. **Barbara Hornbake Angier** explains, "When Carol began organizing the reunion, she originally included four classes because she thought it would be more fun to see everyone who lived in the house while we were there. Then the classes at the top and the bottom of the four said, 'We want to see our big sisters and seniors, too.' So we added three more classes."

REUNION STORY #5: Kappas in Peru. **Sallie Davis Basombrio**, H - Wisconsin, a resident of Lima, Peru, was reading her 1986 Spring issue of *The Key*. She was surprised to find an article about her former roommate, **Elizabeth L. Root**, who was shot in the terrorist attack on the Rome airport. Sallie wrote Elizabeth immediately and they have been in touch ever since. Elizabeth thought that it would be a good idea for Sallie to try contacting other Kappas living in Peru, which she did. Sallie went to the American Society office in Lima to enquire about a Kappa she'd read about in *The Key*, **Dianne Findling Reategui**, IΦ—SMU. They had both been living in Lima for 20

years but their paths had never met. She contacted two other Kappas also married to Peruvians and living in Lima: **Helen Maunsell Koenig**, X—Minnesota; and **Mary Anna Theobald Torres Calderon**, H—Wisconsin. They all got together. Sallie writes, "I must say every one of these Kappas I would gladly have been in favor of pledging had they been (going through Rush) at the University of Wisconsin."

REUNION STORY #6: Jazziest Reunion. A group of 11 Psi^Δ—Cornell Kappas had a "mini-reunion" in New Orleans. One of them, **Carol Wood Christy**, is now House Director for the Delta Pi

Chapter—Tulsa. They gathered for a dinner in the Rex room of Antoine's Restaurant and enjoyed all that jazz.

REUNION STORY #7: Best Reunions Directed by a Directory. After the Kappa Alumnae Directory was published, several **Delta Lambda—Miami University** alumnae who were initiated in 1950, decided to organize a reunion. They used the directory to send out information and gathered in New York City. The pledge sisters decided to reenact a photograph of themselves which was featured in *The History of Kappa Kappa Gamma, The Key*, Fall 1975, Volume I, page 154. The



Delta Lambda—Miami University, 1952 senior class . . . then.



Delta Lambda—1952 senior class . . . now.

Alumnae Extension ALPHA PROVINCE:

WELCOME TO . . . the Long Island (NY) Alumnae Association which was chartered March 1, 1989 with 20 signing the charter. The group immediately grew to 32 and is thriving. Two members attended Alpha Province Meeting to pick up helpful hints in association operations.

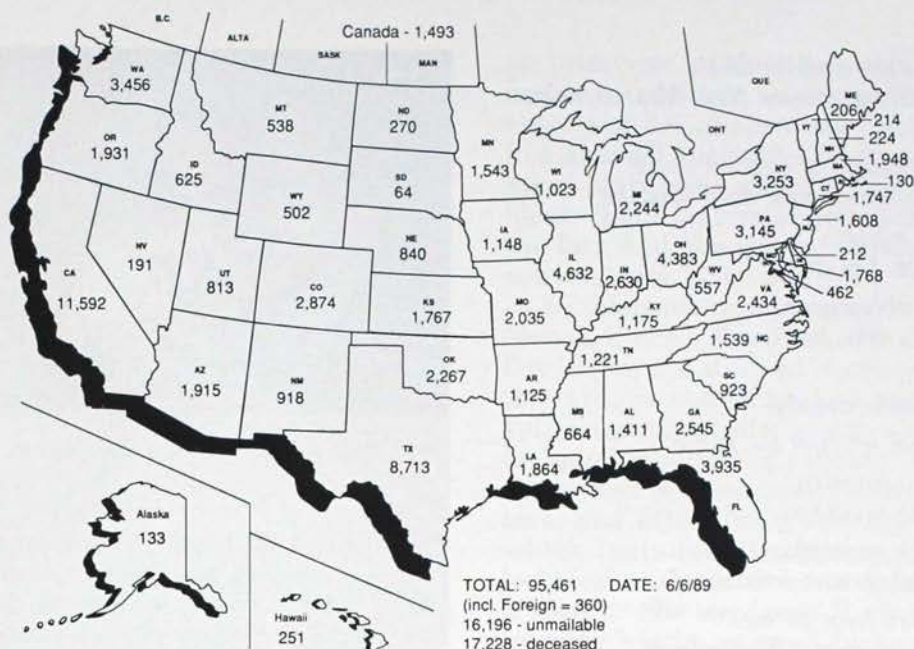
ETA PROVINCE:

CHANGE OF STATUS . . . Fort Collins (CO) Club became an association on February 16, 1989. Twenty-three signed the transfer for the group which was chartered on May 19, 1956.

original picture was taken in 1952 when they were seniors. As **Nancy Ritchard Wickstrand** writes, "We tried to reenact the picture with the seven who were present; however, we realize it has been 35 years, we didn't have a grand piano—just an upright, and NO ONE dared pose with her face in a profile. It is certainly true that Kappas DO have special bonds of friendship...and they last through the years no matter where everyone moves and no matter what happens. This was a weekend we will never forget...and one that will definitely be repeated."

Also as a result of the Kappa Alumnae Directory, the **Beta Lambda—Illinois**, class of 1957 planned a reunion. **Barbara Conway Garrott** reports, "Ten of our 9 pledges spent Saturday in campaign visiting the Kappa house and campus. For most, it was the first time back since graduation. We hope other pledge classes will do the same."

Kappa Kappa Gamma Alumnae Members



REUNION STORY #8: Most Philanthropic Reunion. After 30 years, 12 of the **Delta Nu-Massachusetts** pledge class of 1958 gathered at the home of Margery

Frye in Marshfield, Massachusetts. They collected \$275 to be placed in the Lois Hanlon Dumphy Scholarship Fund. Margery closes her letter, "Kappa ties are forever."



Exclusive offer to Kappa chapters, active members and alumnae. Discounts available on personal computers and equipment.

Need an IBM®, Apple® or Compaq® computer for yourself or the chapter? Or a new printer, or other computer accessories or peripherals? Now, exclusively for Kappa chapters, active members and alumnae, significant discounts are available on a wide range of equipment from ComputerLand of Northern Indiana.* For prices and complete information, contact Nancy O'Brien, ΔΔ at the address below.



ComputerLand®

Business to business. Person to person.

719 W. McKinley Ave. • Mishawaka, IN 46544 • (219) 256-5688

*Discounts are offered only by ComputerLand of Northern Indiana

COMPAQ®

Profiles

Courage, Hope, and Determination . . . Julie Inman, ΔT

*Blue sky and warmth
Of the glorious New Year's morn-
ing.*

*The sound of wax on snow,
Pine scents and deep breaths.*

But what!

"Dad, I'm dizzy!"

*"Double vision;
Four skis, not two."*

Rest...

Breathe deeply.

"Dad, it's just the same."

*Now sideslip,
Mom is ahead.*

*Then snowplow / but
"Dad, I can't continue."*

*"Then lean on me."
Slip deeper... "Come back."*

*Help arrives
To the clinic.*

*Then to the hospital,
No answers.*

*Airlift to another hospital,
Then a partial answer.*

*Brain hemorrhage caused a clot,
My God, why?*

This hemorrhage suffered by Julie Inman, ΔT—Southern California was caused by an AV (arteriovenous) malformation. The location of the hemorrhage resulted in an interruption of the blood supply to that part of her brain responsible for coordination of all moving parts of her body. The original lesion is probably caused by a failure in the



Bid Day, ΔT—Southern California.

development of the capillary system between arteries and veins, according to a term paper Julie wrote for her USC neuroscience class. Julie wrote the above poem to introduce her extensive paper on AV malformations.

The *Los Angeles Times* featured Julie's story, written by Lynn Smith, and has given reprint permission to *The Key*. Our staff would like to pay tribute to her inspiring courage.

Julie Inman lives almost constantly with a mental picture of herself skiing down a Colorado slope.

It goes away only occasionally, on gentle spring evenings when she feels like getting up to go for a jog. But then it rushes back: She hasn't been able to run...since New Year's Day, 1981, when she blacked out while skiing because of a brain hemorrhage.

She was 15, an active sports fan, camp counselor, and soccer coach living with her parents, Peter and Patty Inman, in

Irvine [CA] when the undetected, congenital problem turned her into a limp, much "rag doll."

Friends and neighbors rallied to support her. And at 19, she already had impressed doctors, teachers, friends, and classmates with her spectacular recovery. The damage to her brain, similar to that of a stroke, affected her ability to control her muscles but not her ability to think, said her therapist, Gail Smith of Los Angeles.

"She's come farther than doctors ever thought she would," Smith said. "She's very motivated and really pushes herself. She wants to be like everybody else."

At first, Inman saw in images of eighth graders. It was four weeks before she could speak. It took her six months to sit up by herself and eight months to walk with help. Her speech and handwriting still shaky, she attended high school classes and graduated from Mater Dei High School in Santa Ana.

Now 22, Inman is a senior English major at the University of Southern California with a near 3.0 grade average. She belongs to her mother's sorority, Kappa Kappa Gamma, and can walk upstairs to the second floor of the sorority house where she lives.

By pushing herself several hours a day to walk, exercise and ride a stationary bicycle, Inman now is able to walk half a mile in 36 minutes — with the aid of two canes. Mainly, though, she uses her battery-powered wheelchair because her walking speed is still slow, she said.

She shakes less and her balance has improved, as has her speech. "I've practically got that licked because I talk a lot," she said, laughing...on a sunny afternoon at the USC campus.

Her main aim is to help others.

Last summer, she volunteered at an Irvine retirement home, directing bingo games and reading activities. A highlight of her recovery was giving three speeches there on "positive attitude."

"I reinforce how important it is to be thankful for what you have, it can be lost so easily; how important it is to have support, especially from family and neighbors, and I stress the importance of religion and prayers. God wanted me to continue living for a reason," Inman said. She said she believes that reason is to become a counselor.

When she graduates, Inman wants to tutor, then get a master's degree in counseling. Eventually, she hopes to counsel hospital patients like she once was. "I think I'm real good at understanding why people feel the way they do," she said.



USC Graduation, May 1989

Reinventing Your Lifestyle . . . Patricia Prucha Slagle, BT

"Have a dream and be determined," says Patricia Prucha Slagle, BT—Syracuse, a motto she followed while completely restructuring her life at age fifty.

As a child, Patricia's major interest was music. She won seven scholarships to study piano and theory at the Cleveland Institute of Music, and performed throughout the greater Cleveland area. Pat earned a BFA in textile design at Syracuse University and continued her studies at the Mannes School of Music in New York City. Marriage, four sons, and a master's degree in piano performance followed soon after, along with performances in Taipei, Taiwan, and New Delhi during visits with her parents who were living overseas. But by 1971 the pattern began to alter and there were strong indications that Pat's life would undergo dramatic change.

It was a very bad year in 1972. Several traumatic events caused Pat to stand back and examine where she was and where she wished to be. By that time she was supporting herself and her sons by teaching music publicly and privately and they were barely making ends meet. She knew she wanted and needed to make a lot more money and realized that only a major change in her life could accomplish this goal.

Leaving her two younger sons with her mother-in-law, Pat bought a small camper and a German shepherd dog and set out in search of her future. She comments now that the dog, taken along as a companion and a protector, "turned out to be a marshmallow!" Their travels took them cross-country and some time later landed them in Vancouver. It was here that the focus of her new life began to emerge.

Playing bridge with Webb Johnson, a member of the Vancouver stock exchange, Pat mentioned her search for a new lifestyle. He took Pat to the exchange and showed her what he did. Despite her comments that she had never taken a math course and felt like an illiterate in



A finalist in the U.S. Ballroom Championship Pro-Am International Smooth Dancing competition in Miami, Pat has also been a winner in several state championships.

numbers, Webb encouraged her to give it a try as a stockbroker. As in many areas, the best way to learn was on the job and Pat was told to start applying at brokerage houses and was assured that she'd be a "smashing success."

Where could she find a brokerage house that would hire a middle-aged woman with an arts background and no business experience? Pat went to Florida, where her father lives, and made the rounds of brokerage houses, only to be met with amazement and rejection. Finally, in

an interview at Merrill Lynch, Pat began by reciting all the negative aspects of her application! Despite this unusual approach, the manager asked for reasons why she should be hired. Pat's determination came to the fore and she replied, "Because you can't lose." She was hired.

An intensive training program in Merrill Lynch's New York office left Pat feeling she still had a great deal to learn, so she embarked upon a self-created study plan which included monitoring courses, subscriptions to investment newsletters, and attacking a reading list which included everything from technical analysis to classic economic theory. She says now, "I am still learning." Skills acquired during her early years and refined in later years were put to work to ensure her success: her ability to sell herself as "capable, intelligent and articulate" her ability to be a quick study in acquiring knowledge; her ability to find and use a series of mentors whose expertise in areas where she is weak gave her knowledge and support.

During her 13 years with Merrill Lynch, Pat rose to the position of vice president, and was a member of the Chairman's Club and a number one producer in her office for three years. In April 1989, at age 63, she took on a new challenge and moved to a vice presidential position with Prudential-Bache.

"Forever Young" was the title of a week-long segment of *CBS This*

Continued on page 17



Pat was interviewed by Kathleen Sullivan and Harry Smith on *CBS This Morning* as part of a week-long feature about women who significantly changed their lifestyles in the middle years.

Profiles

Discovering What Makes People Tick . . . Ann Mahony, BP^A

Ann Mahony, BP^A—Cincinnati, is one of those people who makes me beam with pride about being a Kappa. An accomplished career woman, world traveler, media "star" and tireless volunteer, Ann represents enthusiasm and dedication in everything she does, proving the theory right that the busier you are the more you get done.

In addition to the many hours she puts in working for the Junior League, the American Conservancy Theatre, and the San Francisco School Volunteers, Ann just finished her term as President of the San Francisco-Marín County Alumnae Association.

Her profession is fascinating; you see, Ann is a graphologist, or handwriting analyst. She's been at it for the past 15 years and is in great demand by the private and public sectors of business, government, and education. Routinely lecturing across the country, she just finished an 11-city tour introducing her new book, *Handwriting and Personality* (Henry Holt and Company).

Skeptical at first, I started reading her book and couldn't put it down. Ann proves that handwriting is a clear "map" to the subconscious and accurately records your highs, lows, and what makes you tick. The book reveals how to learn more about yourself, your family, and friends as well as how to enhance personal relationships, and even how to make smarter career choices. Just as Carl Jung identified distinct personality types based on behavior, Ann identifies specific personality traits based on handwriting style.

Her premise is that handwriting is an imprint of the mind, a visible record of brain impulses that govern one's behavior. It's so logical that she is frequently called on to serve as an expert witness in both federal and superior court in the areas of document examination, credit card, and check forgery.

Taking her obligation to Kappa quite seriously, Ann feels that alumnae groups are the most important factor in sustaining the Fraternity.



She says that as a student she was so busy studying and working that Kappa activities frequently had to be put on hold. She provocatively put it this way, "As a student, you think you know everything, but when you get out into the world, you discover you know nothing. It's at this time when Kappa connections become so important, giving you permanent bonds and a family you belong to — no questions asked."

Ann has been responsible for many successful alumnae programs including Kappa Career Links, alumnae who open their homes to job-seeking graduates needing a place to stay; and the Hooters, an under-35-year-old group which meets and plans activities together. She also put together a glamorous fashion show and breakfast with Carolyne Roehm, KKI Alumnae Achievement Award recipient, at Saks Fifth Avenue in San Francisco, and planned a series of Kappa vacations including a shopping trip to New York and a theater week in London.

"You must give back what you get out of Kappa, whether it's leadership, guidance or mentor programs. Kappas all share a common experience and that bond is forever. We're dedicated to our careers, families and many other interests that tug at our time. That's why I came up with the theme 'Too Much Fun' for our alumnae group, because that's just what we all need."

Ann has become quite a media sensation appearing on countless programs including *Merv Griffin*,

That's Incredible, *People Are Talking*, and *Regis Philbin*. Recently she has received calls with requests from *David Letterman*, *Pat Sajak*, and *20-20* to do segments on her intriguing topic of graphology. She has analyzed the handwriting of such famous people as President George Bush, Barbara Walters, Brooke Shields, and many others.

Her analysis is more than just for fun. Similar to a psychologist, Ann's insights into personality can help people. "Learning this science has changed my life, and enabled me to help hundreds of others change theirs — we now have a visible record, a pattern 'frozen in time,' of what really makes people tick."

— Donna Rose,
ΓΞ—UCLA

Courage, Hope, and Determination

Continued from page 14

At first, Inman deplored other "pitying looks." Now, people "treat me like anyone else," something she both likes and dislikes.

Sometimes, Inman feels lonely, depressed, and frustrated. It takes so long to read, study, write, and move. And she feels guilty having to ask people for rides. Learning to drive is high on her to-do list, but so far she said, her reflexes are not fast enough.

Julie graduated with honors as an outstanding senior from USC in May 1989 with a BA in English and received a Community Service Award in recognition of excellence in scholarship, leadership, and service. The Order of Omega also recognized her for community service. She and her mother, Patricia Smith Inman, ΔΤ—USC, found a world of Kappa support during her undergraduate years. Summer plans were to serve an internship with the Public Relations Department of USC. Julie has already joined the Southern Orange County alumnae group and plans to maintain a high level of community involvement.

—Kathleen Powers Randall,
ΓΠ—Alabama

Her Focus Is On You . . . Camille Perkins Lavington, BM

Advising individuals and corporations about ways to put their best foot forward is the service offered to her clients by Camille Perkins Lavington, BM—Colorado. As an international communications consultant, she has influenced corporate image, repositioned product lines and developed award-winning television campaigns for such well-known corporate giants as General Electric, Perrier, CBS, Merrill Lynch, Chase Manhattan, American Express, Estee Lauder and IBM. For individuals, she targets personal attitudes as well as appearance.

A leader and trend-setter in her field, Camille draws on her experience with Fortune 500 companies and her former role as vice president of executive presentations and career planning for a division of Saatchi & Saatchi Group in advising more than two thousand executives. Her communication services include marketing strategies, career development, outplacement, executive image and media preparation, protocol and business etiquette, and motivational speeches. In addition to innovative marketing approaches for the ambitious executive, Camille also concentrates on the best-possible visual appearance, with advice and personally supervised visits to hairstylists and makeup artists, and hopping trips to enhance that all-



important visual impression.

Having targeted the executive-etiquette/career coaching field as her special interest 25 years ago, Camille had an early vision of the need for one-on-one coaching in the many and varied aspects of business behavior that would grow with the 1980s business boom. Social niceties such as being on time and not keeping people waiting are among the seemingly simple but very important points included in her consultations and seminars.

When working with an individual, Camille focuses on learning the person's attitudes and motivation to find the best means of getting the client's message across. Similarly, in dealing with a corporation, it is

essential to know the company's mission statement and how they wish to be perceived by the public.

Speeches at such diverse institutions as Harvard, Columbia, and Wharton Business School, as well as The Royal Police Academy in London attest to the broad appeal and wide-spread interest in Camille's work. She has been featured on *CBS Evening News* and has been published in *The New York Times*, *Fortune*, *Working Woman*, *Glamour*, *Harper's Bazaar*, and *Barron's Executive Lifestyle* section.

Camille is a "doer"...a woman who believes strongly in each individual's talents and strengths, as well as her own abilities to enable others to enhance their innate qualities in order to make the best possible impression in personal and in business life. This is the essence of what we believe in as Kappas...helping each other to be the best we can be.

Marketing yourself, keying in on your best qualities and presenting the profile of a business winner are among the focus points which keep Camille Lavington a step ahead in enabling others to put their best foot forward.

—Lois Catherman, Heenehan
BΣ—Adelphi

NOTE: See "Profile of a Business Winner," page 24.

Reinventing Your Lifestyle

Continued from page 15

Morning which aired May 15-19th and which focused on women who reinvented their lifestyle after age forty. Pat was interviewed along with marathon runner Priscilla Welch. She said that age is not a factor unless you make it so, and encouraged others to "have a dream and be determined." Of her own change in lifestyle, she says she asked herself, "What's the worst thing that could happen?" She could fail. But having tried, she would be better equipped to try again or try elsewhere and that was what happened in her rounds of brokerage houses in Florida. Finally

her determination paid off.

I've been a student all my life," says Pat, and her success at the piano keyboard and in the investment business is backed up by other successes. A life master at bridge, nine years ago Pat took up ballroom dancing and has been a finalist in the U.S. Ballroom Championship Pro-Am International Smooth Dancing competition in Miami, as well as winning several state championships.

A telephone talk with Pat leaves you feeling you have made a friend, and indeed, Pat believes in reaching out to others and helping wherever she can. Her own experience has proved to her the value of having a

mentor and she now offers that same support to others. For anyone contemplating a major change in lifestyle, Pat offers a willing ear and an understanding mind and heart. She can be reached care of Prudential-Bache, 1000 S. Tamiami Trail, Venice, FL 34285.

Looking more like 50 than her 63 years, with an income in the six-figure bracket, a new challenge in her work, several interesting hobbies, and what she laughingly describes as 700 pounds of male children plus three grandchildren, Pat Slagle has good reason to say, "This is the best age I've ever been!"

—Lois Catherman Heenehan,
BΣ—Adelphi



Kappa Is Always There for You

by Lois Catherman Heenehan, BΣ—Adelphi

Owl by Carrye E. Schenk

A new job in a distant city, a search for friends in a new environment, a need to share experiences as a new mother, a place to put your abilities as a volunteer to work, a chance to expand your interests and horizons, a means to assist in career advancement, a group with whom to share common bonds in a retirement community...how can you satisfy these needs? Through Kappa. Kappa is always there for you.

As an undergraduate member, you were probably proud of the diversity within your chapter. As an alumna, you will find that this diversity grows in alumnae groups as Mississippi greets Michigan, age 25 joins age 55, artists talk with doctors, full time volunteers meet with career women, and all join forces to create a successful organization while enjoying each other's company. Kappa alumnae groups provide an astonishing variety of membership and activities.

Let's take flight with an imaginary owl to glimpse Kappas as volunteers, hostesses, fund-raisers, career-planners and support groups across the country.

On our Eastern shore, a new alumnae group was formed this year. The Long Island (NY) Alumnae Association organized in November 1988 and found that most of their 35 paid members were working women. Therefore, they decided that they could operate best by meeting on weekends. One luncheon meeting honored 50-year members, and another introduced television personality, Helen Wagner Willey, A^Δ—Monmouth, who spoke about her 35 years as Nancy Hughes in the CBS daytime drama *As the World Turns*. Having found that there are many collegiate Kappas in the area, the alumnae are planning several summer events to introduce these young women to the fun of alumnae life.



In nearby **Westchester County**, an established alumnae association of 70 paid members includes Kappas of all ages, and those who are professionals as well as homemakers and volunteers. Monaco Night, Derby Day, and auctions have raised as much as \$4,000 to be distributed among local rehabilitation agencies, Kappa undergraduate scholarships, and the Rose McGill Fund's Circle Key Grants. This is of special interest since a member of the group has been able to make use of this aid as she returns to school to pursue her goals.

Following the shoreline south, our owl finds Georgia's beautiful coastal area. St. Simon's, Jekyll, and Sea Islands are collectively known as the Golden Isles, and these islands, plus Brunswick, are the site of another new alumnae club. A casual conversation at the 1988 Convention generated a list of about 40 Kappas living in the area. A few phone calls brought responses such as, "I'll call some people," and additional names for the list. In November, 20 excited Kappas met to form the Golden Isles Club. The diverse membership includes a



Kappa Kroquet Couples Party has become an annual affair of the Long Beach (CA) Association.



Arcadia (CA) alumnae taking a break by the Japanese bridge during a recent Gad-A-Bout to the Huntington Library Gardens.



Sheryl Stoddard Wiruth, ΓA—Kansas State, Xi Province Director of Alumnae, admires the iris painted and donated by Dorothy Lemaster Carter, ΔΠ—Tulsa, (right) in the newly redecorated ΔΠ chapter lodge.



Kappa sisterhood is enjoyed at the Village On the Green by (standing from left): Sally Smith Brooker, ΓZ —Arizona; Agnes Goodwin Florea, $\Gamma \Omega$ —Denison; Eunice VonEnde Bryan, BK —Idaho; Eleanor Marling Bartholomew, H —Wisconsin; Barbara Smith Patry, B^3 —St. Lawrence; Marjorie Mercer Sheldon, Γ —Northwestern; (seated from left): Elizabeth Wilson Robertson, H —Wisconsin; Frances Brown Jacobs, E —Pittsburgh; Margaret Marling Benzie, H —Wisconsin; and Alice Cubbertson Rushing, I —DePauw.



Barbara Burney McGuire, ΓZ —Arizona, doing "kitchen duty" at a Hawaii luncheon meeting at the designer home of Allison Allen Holland, $\Gamma \Phi$ —SMU.

dress shop owner, a hotel social director, an antiques dealer, and a cross section of other professions and hobbies. Whatever their individual interests, these Kappas enjoy spending time together.



Continuing to move south, and inland a bit, an owl's eye glimpse of the **Central Florida Association** (Orlando area) reveals a group within a group. In Longwood, an Orlando suburb, 12 Kappas reside in The Village on the Green, a retirement community. Having "discovered" each other, they decided to meet monthly for lunch and have enjoyed these get-togethers for three years. When members of other Greek groups expressed their interest in joining such a group, the

Kappas planned alternate meetings between Kappa-only luncheons and Panhellenic gatherings of the "Greek Gals." In January the Central Florida Association met at The Village on the Green, and members shared memories of their days as undergraduate members. Kappa is truly for a lifetime!



The vitality and diversity inherent in city life is evident as we head north a bit to visit the **Atlanta Alumnae Association**. Rethinking their programming and focusing on newcomers to the area produced spectacular results for this lively group. With 200 new names on their galleys, ten board members followed up the President's letter with personal phone calls, urging newcomers to participate in the alumnae association. As a result, 50 Kappa newcomers attended the September meeting and "chum alums" continued the personal contacts throughout the year. The always-successful "Fashions and Diamonds" style show raised over \$6,000 which went to pay insurance and utility bills for the Battered Women's Center. This county shelter sent a speaker to the February meeting, which included collegiate members from Epsilon Epsilon—Emory; the "admission charge" was a food item for the center. Another program, with an attendance of ninety, offered a presentation on campus violence. Alumnae President Cathleen Morrow McKinney, EE —Emory, says, "We must be doing something right!" and upholds her claim by saying that they had no trouble filling an alumnae board of 28 members.



Flying up to blue-grass country, we find the newly re-organized and revitalized **Lexington Alumnae Association**. An April meeting was attended by 114 members for the induction of BX —Kentucky seniors into alumnae life. Most of the 600 Kappas in the Lexington area are Beta Chi's and they continue to give support and loving care to the chapter. Plans for next year include a pre-rush party at the chapter house to plan their rush help, Founders' Day Banquet at an elegant country club, a Christmas Open House, and the Senior Dinner for the Beta Chi.



Kappa diversity appears in many ways and a small but determined group in Monmouth, IL, has set out to show its strength through preserving some of Kappa's history. Seven members of Alpha Deuteron Chapter comprise the Steering Committee of the Minnie Stewart Foundation. Their purpose is to raise funds for the purchase, preservation, and maintenance of the home of Minnie Stewart, one of our founders. This Victorian home is the only founder's home still in existence and recently came up for sale for the first time in 138 years. The home will be used for chapter functions, club meetings, small conferences and seminars, and the housing of overnight guests. Kappas are invited to visit!



Following the Kappa trail west a bit, another small but active group appears in **Fort Dodge, IA**. About 20 paid members enjoyed a busy year selling wrapping paper, meeting for the Founders' Day

Luncheon and a Valentine Coffee, and welcoming spring with a salad potluck and silent auction. An invitation to other Panhellenic groups to join them at the Blandon Art Gallery for a reception was a special event of the year. This group also helped two active chapters by making Initiation robes for Beta Zeta—Iowa and providing exam snacks for Delta Omicron—Iowa State. The mid-country drought is certainly not evident in the caring and involvement of Fort Dodge Kappas.



It is almost due south as the owl flies to **Tulsa, OK**, where the alumnae association tries to attract Kappas of all ages...maybe not all at the same

time, but surely for one or two events each year. Founders' Day featured "seasoned" Kappas, as 50, 60, and 75 year members were honored with a three-generation Kappa family attending. Redecorating the Kappa lodge for Delta Pi—Tulsa was one of several successful undertakings this year. Cook's Tour was a fund-raiser which provided donations to Parents Anonymous and Kappa philanthropies, as well as aid to the three Kappa chapters in Oklahoma. An innovative idea for young mothers and working women is "Zip Sippers." The 5:30 to 7:30 time slot was set aside for young mothers who could find some free time when dad got home, and for working women to stop by *en route*, to enjoy nibbles and conversation for an hour or so.



If our imaginary owl had time for a longer journey we could make stops in Austin, Lubbock, Albuquerque, Denver, Great Falls, and Seattle where

Kappa activities are as varied as the scenery we would view. The California sun and sea beckon, however, and alumnae groups take advantage of local sights. With 45 members, the **Arcadia Association** particularly enjoys its "gad-a-bout" group, with mountain hikes, trips to the Getty Museum and participation in the Junior Philharmonic Showcase House as evidence of their diversity of interests.



A golden anniversary is always time for celebration and the **Pasadena Alumnae Association** did it in style.

A highlight of their 50-year birthday party was the appearance of Jean Webb Smith, BH^A—Stanford, wife of former Attorney General William French Smith, who told of her "Impressions of Washing-



The Minnie Stewart House in Monmouth, IL.



Helen Wagner Willey, A^A-Monmouth, told members of the Long Island Alumnae Association about her 35 years as a member of the cast of *As the World Turns*. A 50-year Kappa, Helen was awarded an honorary Doctor of Human Letters degree by her alma mater and is chairman of an on-going project to build and endow a new theater and communications complex at Monmouth.

ton." A nostalgia corner enabled members to view the charter and other memorabilia, as well as serving to remind them of their growth and broad spectrum of interests. Early philanthropies and community service revolved around the war effort — World War II, that is — while current fund-raising provides support for the Heritage Museum, scholarships, and aid to Delta Tau—USC and Gamma Xi—UCLA. Kappa alumnae groups change with the times and adapt to the present needs of society.



Perhaps not a natural habitat for our imaginary owl, but certainly a wonderful spot for Kappas are the beautiful **Hawaiian Islands**. Although there

are 250 Kappas on the galleys for all the islands, inter-island travel difficulties make it impossible to expect everyone at the meetings. About 50 Kappas enjoyed an interesting schedule of programs this year. A "make-your-own-sundae" meeting was a hit, as was a program on trends in health care presented by a Kappa who had been named "Nurse of the Year." A Monmouth Duo luncheon in January featured a speaker from a local children's shelter and another meeting provided a trip around Pearl Harbor on an admiral's barge! Hawaii's Kappas have found that a co-presidency works well for them and note that one of the new Co-Presidents boasts a Kappa mother and daughter. They look forward to a new interest this year in adopting and providing long-distance support for Epsilon Psi—Santa Barbara.

Geography, climate, number in the area, big city, small town, new graduates, retirees — all combine to make each alumnae group a different and special entity.

Thank You, KKT by Genevieve Smith Whitford, Σ—Nebraska

You are the sisters
I never had,
the friends
that everyone needs,
my home away from home.
Because I admired
the Kappas I knew,
I found affirmation in their
asking me to join them.
I felt free to be
the best in me.
In sorority,

I gained confidence
in myself,
I earned tolerance
for others,
I grew in responsibility,
I found the meaning of loyalty.
Thank you KKT,
for being THERE FOR ME.

NOTE: This poem was written for
The Key, Summer 1989. Genevieve
Whitford has published a book of
poetry, *Queen Anne's Lace* and is cur-
rently working on another, *The
Sound of the Harp*.



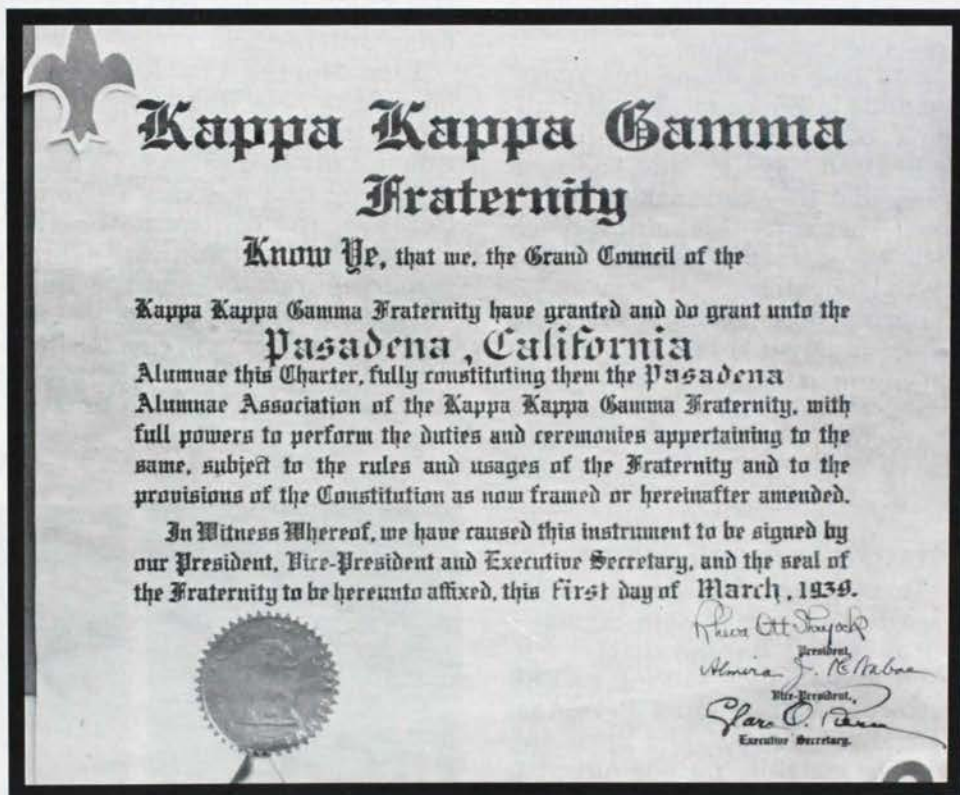
3X—Kentucky seniors being wel-
comed to alumnae life by Vera
Marine, Director of Alumnae, and
Lexington alumnae.

As in our collegiate chapters, diversity is the key. Diver-
sity in membership, variety in programming, differ-
ences in focus, and most of all, the coming together of all
these factors into a cohesive group that provides for the
needs, interests, and enjoyment of all members is what
makes a Kappa alumnae group a lively and vital organi-
zation.

New faces, new energies, new ideas, new enthusi-
asms add up to new and better results. "We've always
done it that way," becomes "Why don't we try it this
way?" and "That doesn't work for us," may turn out to
be, "We should have tried this long ago." Being open to
change is part and parcel of the diversity of our alum-



Mary McCabe O'Connell, BΠ—Washington, located memorabilia and
designed the nostalgia corner for the Pasadena Alumnae Association's
50th Anniversary celebration. She points out a picture of her mother,
Catherine Richards McCabe, also BΠ, first President of the association, to
her daughter, Katie O'Connell Gaebel, ΓB—New Mexico.



The focus of the nostalgia corner at Pasadena's birthday celebration was
the group's charter, signed March 1, 1938, by Rheva Ott Shryock,
BA—Pennsylvania, Fraternity President; Almira Johnson McNaboe,
H—Wisconsin, Vice President; and Clara O. Pierce, BN—Ohio State, Execu-
tive Secretary of the Fraternity.

nae activities — the key to making it all work.

It can work for you. In the video presentation about
the Adelphi Campaign, Donna deVarona, ΓΞ—UCLA,
says that as her life changes, "Kappa is still there for
me." That is true for each of us. Somewhere, in a time
and place I don't remember, I read and copied the fol-
lowing: "We need to have people who mean something
to us, people to whom we can turn, knowing that being
with them is coming home." That defines a Kappa
group. It defines an experience that none of us should
miss.

Kappa is always there for each of us.

...Field Representatives 1989-90

by Juliana Fraser Wales, BN—Ohio State, Director of Field Representatives



In all they do, they carry the spirit. The 1989-90 Field Representatives carry the spirit of Kappa to our undergraduate chapters as Chapter Consultants and Traveling Consultants.

How does one define this spirit? By: pride in Kappa ideals and traditions, commitment to excellence, dedication, loyalty, and the firm belief that they can make a difference. They carry this spirit through their words, their actions, and their joy and laughter.

Each year selection of the Field Representatives is based on leadership qualities, communication skills, enthusiasm, dedication, and character. Meet the 12 who will "carry the spirit" to our chapters this academic year...

CHAPTER CONSULTANTS:

Teresa Cox, EK—South Carolina, will be going to Zeta Sigma—North Texas. Teresa's chapter contributions include serving as Philanthropy Chairman, a Personnel Committee member, and President. Campus activities include Advertising Club, Sorority Council, College Republicans, Dorm Government, and intramural sports. Her special interests are photography, sports, visiting art museums, and meeting new people.

Ann Marie Higham, Θ—Missouri, is going to Delta Upsilon—Georgia. Ann Marie's chapter contributions number being on the Finance, Membership, and Program Committees plus serving as pledge class President, Corresponding Secretary, and President. Campus honors and activities include Homecoming Queen, Order of Omega, the Chancellor's Leadership Class, Student Foundation, Summer Orientation Leader, Greek Week Steering Committee, and the Missouri Stu-

dent Association. She is interested in collecting Teddy bears, walking for exercise, talking with anyone, watching Walt Disney movies, cross stitching, playing with dogs, and being with her family.

Lisa Morris, ΓP—Allegheny, is heading to Zeta Rho—Colgate. Lisa served the Fraternity as a Traveling Consultant in 1987-88. While at Allegheny, Lisa was very active with *Campus*, the college newspaper; *Compass*, the annual campus resource directory; and the Homecoming Committee. She served as a Resident Adviser, and chapter President. Lisa spent last year traveling in Europe and in addition to travel-

ing, enjoys backpacking, meeting people, and the academic environment.

Christine Ann Nelson, EE—Emory, will spend the year with Beta Rho—Cincinnati. During her undergraduate years Christine was a member of the PR Committee, Assistant Pledge Chairman and First Vice President. Among her campus activities are Volunteer Emory, Sophomore Adviser, Tour Guide, overall chairman of Dooley's Week, Heritage Ball, and Campus Development Committee of the University Senate. A certified mediator she enjoys being with people, skiing, cross stitching, needlepointing, and aerobics.

Marnie P. O'Brien, ΓΩ—Denison, is going to Zeta Tau—Washington and Lee. Marnie's chapter contributions include serving as Corresponding Secretary, on the Social and Personnel Committees, and as chapter President. She belonged to

CHAPTER CONSULTANTS



Christine Ann Nelson



Ann Marie Higham



Marnie P. O'Brien



Marion E. Riley



Lisa Morris



Teresa Cox

the Denison Community Association and taught children how to swim. After spending her junior year in England, Marnie is looking forward to more traveling.

Marion E. Riley, ΔN—Massachusetts, is looking forward to being with Zeta Pi—College of Idaho. Her chapter contributions are: serving as Recording Secretary, First Vice President, and a member of both the Sisterhood and Rush Super Committees. Marion's campus activities include the Rugby Club, Debate Club, school newspaper reporter, and university Dramatic Club. Her hobbies and special interests are aerobic swimming, skiing, running, being with friends, and experiencing new adventures.

The following young women will "carry the spirit" each week to a different campus. All chapters will receive a visit from one of these...

TRAVELING CONSULTANTS:

Linda A. Finnegan, ΓH—Washington State, served her chapter as President, Second Vice President, and a member of the Personnel, Program, and House Committees. Her campus activities include being an academic peer adviser, a member

of the Marketing Club and International Business Club (Marketing Manager), and Greek Week Representative.

Sheri Lynne Gosliner, ΓΞ—UCLA, contributed to her chapter as Pledge Class Secretary, a member of the Program Committee, Recording Secretary, and President. On campus Sheri was the co-founder and co-editor of the UCLA Greek Yearbook, Rush Counselor, and the UCLA Study Abroad Program. Traveling, Italian, cycling, and meeting new people are Sheri's special interests.

Laura J. Hedges, Ω—Kansas, was tapped by her chapter to serve on the Membership Committee, as Assistant Membership Chairman, and Membership Chairman. A Special Olympics volunteer, Laura was also a University of Kansas Student Ambassador, member of the College Republicans, and a Headstart classroom volunteer. Her special interests are reading, writing poetry, music, needlepointing, cooking, and politics.

Linda L. Hoffman, ΓB—New Mexico, chapter accomplishments include serving as Fraternity Education Chairman, Membership

Chairman, a member of the Personnel Committee, and as Chapter President. Linda was active on campus as a Trailblazer, student tour leader, Criminal Justice Association member, and hospital volunteer. The recipient of the Dean of Students' Award and co-sponsor of a high school drill team, she enjoys traveling, skiing, swimming, and fast walking.

Amy Mendenhall, EM and Δ, pledged and was initiated at Clemson and then transferred to Indiana where she was affiliated. On the list of her chapter contributions are: Assistant Panhellenic Delegate at Clemson, and a member of the Delta Personnel Committee and First Vice President. Among Amy's campus activities are Junior Staff of the Clemson Student Council, IU Student Athletic Board, and the IU Student Foundation. Her hobbies and special interests are photography, reading, sailing, skiing, and cross-stitching.

Denise Rugani, EO—Calif., Davis, was Treasurer of her pledge class, Recording Secretary and President. She also served as a member of the Membership, Social, and Program Committees. On campus Denise was a student intern in elementary schools, in the Psychology Club, and coached a swimming team. She enjoys interacting with people, swimming, and reading novels.

As these young women carry the spirit this year, enjoy their friendship, profit from their assistance and enthusiasm, and follow their example in seeking excellence. May that spirit touch each one of us.

TRAVELING CONSULTANTS



Linda A. Finnegan



Laura J. Hedges



Amy Mendenhall



Linda L. Hoffman



Denise Rugani



Sheri Lynne Gosliner

You, too, can "carry the spirit" as a Chapter or Traveling Consultant. Apply now for a Field Representative position.

Applications and brochures will be in the Fall Chapter Mailing, or you may contact the Director of Field Representatives.

DEADLINE; November 15, 1989

It is the opportunity of a lifetime. Capture the spirit with a Kappa career.

The Profile of a Business Winner

by Camille Perkins Lavington, BM—Colorado

One evening recently, on a transcontinental flight, I began reminiscing about my career and tried to recapture the events that have greatly influenced my life. The first and most significant milestone occurred when I made the decision to join Kappa Kappa Gamma and become a member of one of the most magnetic families I have ever known. Kappa reinforced the values I believe in — the ones that have given me the joy of true friends and trusting relationships, and also helped me realize my career goals. To me, having a fulfilling personal life and being a business winner are part and parcel of one philosophy, the one which I have made my life's work to communicate to others.

Instinctively, I knew during Rush Week that Kappa offers a comfortable haven for members who recognize their own talents, constantly strive to improve, and expect to be successful in all they do. Everyone is encouraged to excel — “to be the best” — to think like a winner, not like a survivor. This Kappa premise is the premise of every business winner, and the basis upon which a woman should view herself and the world. Self-confidence and an honest pursuit of perfecting one's talents are the best assets you can give yourself or a company. Winners are people who turn their self-doubts into self-awareness and work in a positive way toward improving both their talents and their weaknesses.

One aspect of my work is to help clients understand themselves well enough to build a career in an environment that produces both personal and financial satisfaction. I begin by capturing the flavor of a person — personality, socio-economic needs, motivational drives, in addition to their intellectual, emotional and spiritual base. This is achieved by discerning the client's level of sophistication and “street smarts.” I literally check attitude and frame of mind to establish whether they are conservative or adventuresome.

Suggestions of behavior modification depend on individual flexibility



CHOICES

ity and desire to change. After a client understands his/her own qualifications for various levels of power within an organization, techniques are offered to develop these six points: adaptability and empathy, “political” savvy and persuasive skills, appropriate behavior and manners, personal style and packaging (or presentation), timing and delivery, self-promotion.

Living in the Kappa house, with a variety of personalities and attitudes, gave me a perspective of my own strengths and areas in which I could improve. I learned the valuable art of being gracious and adjusting to other people's idiosyncrasies, as well as appreciating my sisters' opinions. These were crucial lessons on the path toward becoming a good Kappa and a true winner. Respect for other people's experiences and talents and the intellectual growth inherent in encompassing a range of ideas are essential tools of every business winner.

As a member of Kappa, I gained the confidence to entertain large groups at business functions, drawing on techniques used during Rush Week. I realized how important it is to enable others to be at ease. Trumpeting your talents with no regard or respect for the environment, whether business or social, can only make other people feel uncomfort-

able in dealing with you and will damage your credibility. Rush Week showed me just how important it is to relax and give yourself and others time to adjust to a world you've just stepped into. I spend hours with leaders of American companies who feel strongly that they must learn the mores and attitudes — the cultures — of the countries with whom their companies do business. These business winners know that “When in Rome...” is a priceless rule. You have to speak the language (whether it's IBM, General Electric or Japanese NEC rhetoric), and be comfortable operating within their political structures in order to have a positive impact.

The most profound impact Kappa Kappa Gamma has made on my life is the opportunity over the years to develop so many friendships within our Fraternity. There is nothing I value more than the rapport I enjoy with close friends whose loyalty has made a great impact on my life. About 12 years ago, Kappas Ann Hundley, ΔI—LSU, and Pattie White, EN—Vanderbilt, inspired me to become a personal marketing consultant...to teach individuals the traits of a winner and the image of a winner. These women grew up with Kappa standards, and realize just how pertinent they are to winning — not just surviving — in today's business world. I have stuck to the adage that loyalty and the strict adherence to ethics are the only ways to make it to the top and stay there. No long-lasting Chief Executive Officer has ever regretted the friendships honored along the road, but many have rued the enemies they've made.

Of course, I cannot discount the significance of the hours my roommates and I spent discussing clothes. Little did I know the value my honed sense of dress would be to my career. Dress is only a superficial aspect of a whole person, but it is your first impression of other people. There is no substitute for the statement appearance makes. Being well-groomed, with a neat, stylish haircut, a feminine but professional suit or dress backed up by a confident attitude can land a job

to attract the eye of a prospective client faster than an excellent résumé or track record. Looking and acting capable and successful is a "given" for every business winner.

I've spent the last twenty-five years helping well over two thousand clients give themselves the

tools and strategies they need to market themselves, their ideas and values to the business world. Many of the speeches I give and seminars I've conducted as a consultant are based on the wisdom I found through Kappa Kappa Gamma. People come to me for the finer nu-

ances of the world of international business — even a few Kappas. It is always a pleasure showing Kappas that just a little reminiscing is the key to unlock the secrets of success.

NOTE: Camille Lavington is profiled on page 17.

Postgrad Makeover

by Donna Rose, ΓΞ—UCLA

This time of year calls for a transformation of sorts—a fashion makeover that will transform a student into a career woman. Now that graduation celebrations are over, it's time to get down to business and pick up some secrets to career-smart good looks.

Besides getting a stylish haircut and perhaps a beauty makeover at your favorite store, concentrating on updating your wardrobe makes good sense. Keep your favorite jeans and sweatshirts of course, but add a few key pieces to keep you looking smart and fashionable for your new job.

We can all breathe a sigh of relief as fashion designers are finally listening to us and giving the public what it wants. So long mini, so long pouf. It's back to basics. Well-dressed Kappas this season know that this fall means a return to the essence of American sportswear dressing — at work and at play. Carolyne Roehm, 1988 KKT Alumnae Achievement Award recipient, sums up the season, "Clean, relaxed, not stuffy, but lean, long, small shoulders, and totally elongated lines." There are four words to keep in mind when shopping this year: soft, subtle, simple, and swing.

Color and fabrics are important, with less embellishment seen on clothes. Details to look for include wrapping, draping, neckline interest, and even slits and fringe.

The look is modern, classic, and ethnic. Modern in the 1990's means soft with an emphasis on clean shapes and layering of colors and fabrics. Classics include Chanel inspired pieces, the menswear influence, classic black tie, and British traditional. Ethnic will spice up both casual and evening wear, tak-

ing its influence from the American Southwest plus the Middle and Far East with beading, trim, and buttons in gold.

The strongest pieces to add to your career wardrobe include a good looking jacket, a vest as an updater, a white shirt with big collar and French cuffs, a longer skirt, soft pants, and a fluidly draped coat.

Color combinations are the big news for this season. Warm mixtures of two or three shades of one color are the big hit while monochromatic dressing remains important. One of the hottest colors is brown, with earthy tones showing up everywhere from coats and jackets to skirts and shirts.

Fabrics show diversity but have a common theme: richness, color and decorations. There is a renewed emphasis on softer surfaces and lighter weight weaves. Some popu-

lar fall fabrics include camel's hair, corduroy, sheers, silks with shine, lace, and knits.

Finally, accessories run the gamut from scarves and shawls, which are being called the pivotal accessory this season, to big, soft handbags that are making a comeback for fall 1989. Opaque hosiery is still the most important daytime look with color being the news. This is a season for flat and mid-heeled shoes. Jewelry is like a pirate's chest with the pendant being the hot item. Gypsy, ethnic, gold, and Chanel looks are the trends to remember as you create a simple, classic mood through your wardrobe.

NOTE: Donna Rose is a Fashion and Beauty Merchandising Editor for Harper's Bazaar magazine in New York City.

We Would Make \$1 Million for Kappa.....

IF only half our members used the Rose McGill Magazine Agency to order or renew subscriptions. Your subscriptions support the Rose McGill Fund, our source of aid to Kappas suddenly in financial need due to misfortune or illness.



- Call Toll Free 1-800-KKG-ROSE
- Charge to VISA or MASTERCARD
- or
- Make check payable to Rose McGill Agency
- Write to: Rose McGill Agency, Box 177, Columbus, Ohio 43216
- or
- Ask about special rates for office subscriptions.
- Contact your Local Chairman.

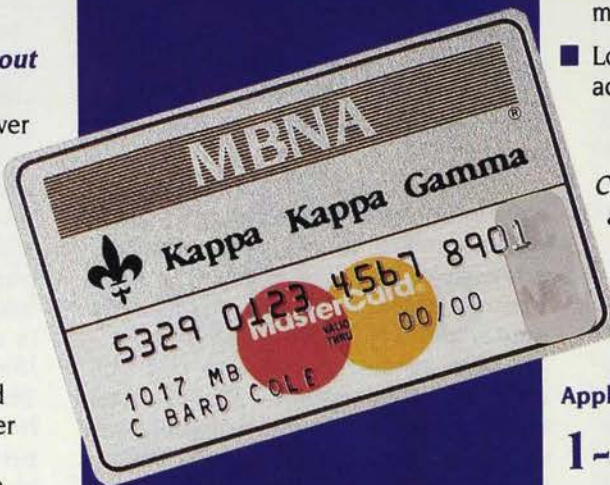
Help KKG just by using your credit card.

Imagine a prominent line of credit up to \$5,000, MasterCard® card acceptability, and a way to generate ongoing funds for Kappa Kappa Gamma at no cost to you. It's right here. The Kappa Kappa Gamma Silver MasterCard® card is yours free of its \$18 annual fee the first year. The annual percentage rate is a competitive 18.9%, and you will also receive a companion VISA® card.

A MasterCard® to try without risk for one full year.

The Kappa Kappa Gamma Silver MasterCard Program will secure for you the finest credit services: Worldwide acceptance at 6.3 million locations... 24-Hour toll-free Customer Service, 365 days a year... No finance charge option on purchases... Convenient access checks and cash advance privileges at over 150,000 locations through the card that proudly displays the Kappa Kappa Gamma identification.

A fundraiser worth up to \$5,000 for you?



Your travel benefits include:

- Up to \$300,000 travel accidental death and dismemberment insurance
- Up to \$15,000 auto rental collision deductible reimbursement
- Up to \$3,000 lost luggage coverage
- Emergency cash and airline tickets
- 24-hour toll-free travelers' message service
- Lost card registration at no additional cost

Complete the brief application and send it to:

Kappa Kappa Gamma
MasterCard®
MBNA, P.O. Box 15464
Wilmington, DE 19850

Apply right now by calling toll-free

1-800-847-7378

Be sure to use the priority code CONJ when calling!

YES!

I wish to apply for a Kappa Kappa Gamma Silver MasterCard account with a line of credit up to \$5,000 and all other benefits described above.† (NOTE: This is not an application for a corporate account.) (Please Print)

TYPE OF CARD(S) REQUESTED: ☐ MasterCard Only
☐ MasterCard and VISA

NAME _____

ADDRESS _____

CITY _____ STATE _____ ZIP _____

HOME PHONE () _____ BUS. PHONE () _____

ARE YOU: ☐ Renting ☐ Own ☐ Buying Monthly Payment \$ _____

SOCIAL SECURITY # _____

DATE OF BIRTH _____

PRESENT EMPLOYER _____

NATURE OF BUSINESS _____

POSITION _____ YEARS THERE _____

ANNUAL SALARY \$ _____ OTHER INCOME* \$ _____ SOURCE _____

*(Alimony, child support, or separate maintenance income need not be revealed if you do not wish it considered as a basis of repayment.)

PREVIOUS EMPLOYER IF LESS THAN 3 YRS. _____ YEARS THERE _____

MOTHER'S MAIDEN NAME _____

(For use when you request special action taken on your account)

Previous address if at present address less than 3 years. _____

I have read the entire application, agree to its terms, and certify the information is correct.

APPLICANT SIGNATURE _____ Date _____ (Seal)

Use this section to request extra cards. If you wish an additional card issued to a co-applicant over 18 years of age, complete the information below.

CO-APPLICANT NAME _____

RELATIONSHIP _____ SOCIAL SECURITY # _____

EMPLOYER _____ YEARS THERE _____

POSITION _____ ANNUAL SALARY \$ _____

OTHER INCOME \$ _____ WORK PHONE () _____

I have read this entire application, agree to its terms, and understand that I will be jointly and severally liable for all charges on the account.

CO-APPLICANT SIGNATURE _____ Date _____ (Seal)

CREDIT CARD ACCOUNTS:

MASTERCARD®/VISA® ACCT. NO. _____

AMERICAN EXPRESS® NO. _____

I (we) authorize MBNA® to investigate any facts or obtain and exchange reports regarding this application or resulting account with credit reporting agencies and others. Upon request I (we) will be informed of each agency's name and address.

†The ANNUAL FEE for the Association Silver MasterCard account is \$18. The ANNUAL PERCENTAGE RATE is 18.9%. GRACE PERIOD: You will not be assessed a FINANCE CHARGE if you pay the New Balance Total by the Payment Due Date (25 days after the billing date). If this amount is not paid, FINANCE CHARGES accrue from the date of PURCHASE. A cash advance will bear FINANCE CHARGES from the date of transaction. OTHER CHARGES: You will be charged an overlimit fee of \$15 if your New Balance Total on your billing date is more than 15% over your credit limit. You will be charged a late fee of \$15 if you fail to make required payment within 15 days after the Payment Due Date. You will be charged a return check fee of \$15 if a check submitted as payment is returned for any reason.

This offer is not available in Delaware. MBNA® is a federally registered Service mark of Maryland Bank, N.A., a subsidiary of MNC Financial, Inc.

CONJ 10-163 11-163



Membership Data

(To be used by members of Kappa Kappa Gamma only)

ATTACH
PHOTO
(optional)

Class _____

Name of Rushee _____
(Last) (First) (Nickname) Hometown _____

To _____ Chapter of Kappa Kappa Gamma at _____
(College or University)

Has rushee a Kappa relative? Sister _____ Mother _____ Grandmother _____ Other _____

Name _____
(Married) (Maiden) (Chapter)

Address _____
(Number) (Street) (City) (State) (Zip Code)

Has rushee connections with other NPC groups? _____

High School _____
(Name) (City, Suburb or Community where located)

Scholastic average _____ Rank in class _____ Number in class _____

Schools attended after high school _____

Scholastic average _____ Number of terms completed _____

Activities: Please list names of organizations (explain type - school, church, community) with the participation and leadership in each one. (Attach additional information on separate sheet if you choose.)

Special recognition and honors awarded:

Work experience (paid and volunteer):

Please use this portion of the form to provide information about the rushee's character traits, leadership qualities, and personality characteristics. Indicate rushee's special interests, talents and any other information which might serve as a means to know her better.

Name of Rushee _____
(Last) (First) (Nickname)

Name of Parent or Guardian _____
(Give full name)

Home Address _____
(Number) (Street) (City) (State) (Zip Code)

I hereby endorse this rushee with the understanding she may become a pledge of the Fraternity if she so desires.

Signed _____ Date _____

Address _____
(Number) (Street) (City) (State) (Zip Code)

Maiden Name _____ Married Name _____

Chapter _____ Initiation Date _____

I have known the rushee for _____ years.

Although I do not know this rushee personally, this information has been obtained from school, friends or other reliable sources _____.

If the rushee lives in a city where there is an alumnae association, club or area reference committee, the signature of the MEMBERSHIP REFERENCE CHAIRMAN of that group is necessary. Please forward for her countersignature. If there is no organized group, please forward to the STATE REFERENCE CHAIRMAN, unless endorser and rushee are from the same hometown. If so, send form directly to the chapter.

THE ALUMNAE MEMBERSHIP REFERENCE COMMITTEE, ARC, OR SRC OF _____
(Association, Club, ARC, or SRC)

Signed _____, Chairman. Date appointed to office _____

Address _____ If alternate, check here _____

Date _____

OTHER authorized Fraternity signature (to be used if necessary)

Signed _____ Title, check one:
Membership Adviser _____ Chapter President _____
Fraternity Representative _____

Date _____

TO BE COMPLETED BY THE CHAPTER MEMBERSHIP CHAIRMAN:

Reference Endorser Acknowledged _____ Date Pledged _____

Signed _____, Active Membership Chairman _____ Chapter _____

IF RUSHEE IS PLEDGED TO KAPPA KAPPA GAMMA, SEND THIS FORM TO THE DIRECTOR OF MEMBERSHIP WITHIN 20 DAYS OF PLEDGING.

Why Secret?

by Gini Anding La Charité, ΓΚ—William and Mary, Fraternity Historian

The college fraternity system is based on a vow of secrecy to be responsible for each other and to each other for life. Only death cancels this obligation, this sacred contract among members. Symbols known only to those who have been initiated and duly sworn to conceal and never reveal the meaning behind each symbol remind each of the duty to do his or her utmost mentally, morally, and socially for each other. As *The Golden Key*, 1886, explains: "Our secret symbols say to us what we ought to remember; the more strikingly these truths of the Fraternity are presented, the better heeded and remembered they will be." Kappa Kappa Gamma is for Kappas!

Phi Beta Kappa, the first secret Greek-letter fraternity, sought a fellowship to improve the quality of social life and promote literary study. While Phi Beta Kappa was not born out of political reasons, its very establishment as a secret society was partially determined by the patriotic climate of the time. Officially founded on December 5, 1776, by a group of five seniors from the College of William and Mary, the first members were highly aware of their historical time; the Declaration of Independence had been signed six months earlier, and Williamsburg, VA, was a hotbed of American revolutionary spirit; the Raleigh Tavern, where the five met, had long been a favored meeting place for Patrick Henry and others. Behind the creation of a secret society was the deep belief in the right to free assembly — the forerunner of the famous case in the Indiana legislature 100 years later over the civil liberties of college students to join secret Greek-letter societies.

The sign of loyalty which a secret oath implies is embedded in the notions of independence and self-government. It is an affirmation of the right of individuals to join

together in order to function by "sympathy and encouragement," not by rules and regulations, in a union based on "trustworthiness of character" — individual honor. The literary aspect of fraternity life in the nineteenth century meant that the members were "free from official surveillance and unsympathetic curiosities" when they practiced their literary orations, debates, and readings before they had to perform publicly. The acquisition of "ease and self-possession" obtained in chapter meetings contributed to better academic work and enhanced the quality of scholastic performance on the campus.

Being free to join together for the purpose of individual improvement, socially and educationally, also meant an equality of standing and position within the group because of the sacred oath of membership. The solemn obligation to each other for life required common footing. The opportunity to know each other within a framework of secret bonds brought with it the elimination of distinction between classes in school and between collegiates and alumni, especially in the aftermath of the Civil War when the women's groups were founded.

Historically, the fraternity system may be said to have been a radical movement. Born first in the climate of agitation for political liberty as an educational and social confirmation of that desire for freedom, the system re-emerged in the nineteenth century in an era of agitation for social reform. The growth of women's fraternities in particular reflects a radical demand for change; first, the right of women to educational equality, and second, to social parity on the campus. Many early honorary members were leading abolitionists and suffragettes, champions of equal rights for all members of society. The desire for freedom in what was a deliberate

rejection of conservative practices in the East and in the South may well explain why today's fraternity system has its roots in the Middle West. Phi Beta Kappa was forced to go public in 1831 during an outbreak of Eastern anti-Masonic feeling and a conservative mistrust of secret groups as pockets of immorality.

Once Phi Beta Kappa revealed its motto, "Philosophy, the Guide of Life," and the secrets of its three symbolic stars, Friendship, Morality, and Literature, it became generally known that secret fraternities were based on the pledged word as the self-sacrifice of individual self-interest, "the first element of real friendship." Furthermore, fraternity membership was seen as the freely-made decision to place the honor and moral welfare of the group above self-serving actions. Greek membership began to be seen as a leveler, basing its organization on a democratic tie of mutual congeniality and the sharing of noble purposes, made all the closer by the secret oath to serve each other for life.

Secret fraternities affirm and defend the most basic of all democratic principles: the freedom of thought. Secret vows and symbols provide links by taking the members back to common bonds of the past and then forward through the renewed pledge of loyalty to the present — a continuity of the historical past of the freedom to join and through the group become the best that one can be. It is through the solemn promise, the sacred vow, and the secret oath — those "mysterious charms of knowing," that each member permanently links her life with another, "one in spirit and in loyalty."

NOTE: This is the second in a series of three articles. The first, "Why Fraternity?" appeared in *The Key*, Spring 1989; "Why Greek?" will be in the Fall/Winter issue.

The Adelphe Campaign

Everything's Up-To-Date in Kansas City!

That's true not only in the song from *Oklahoma*, but also in the efforts of Kansas City Kappas to do their best in support of the Adelphe Campaign. Under the direction of City Chairman Martha Galleher Cox, P^Δ—Ohio Wesleyan, former Director of Chapters and of Philanthropies, a city-wide corps of volunteers is conducting a capital campaign organized according to recognized guidelines for any major fund-raising effort.

Marty sent a two-stage mailing to all Kappas in the area, first to explain campaign goals and request participation, and then a follow-up. A committee of nine interested and committed Kappas are the focal point for the campaign. Gail Van Reen Acuff, Θ—Missouri; Barbara King Barickman, X—Minnesota; Lynn Latham Chaney, ΔI—LSU; Darcy Howe, Δ—Indiana; Jan Stanzel Sayler, BZ—Iowa; Kitty McDonald Clevenger,



From left: Lynn Latham Chaney, ΔI—LSU; Becky Culpepper Benson ΓA—Kansas State; Kitty McDonald Clevenger, P^Δ—Ohio Wesleyan; Janet Stanzel Sayler, BZ—Iowa.

^A—Ohio Wesleyan; Becky Culpepper Benson, ^A—Kansas State; and Patricia Piller Shelton, ^Ω—Kansas, attended an orientation and training session conducted by an Adelphe staff member to learn techniques for making clear, concise, professional presentations about the purpose of and need for the campaign. They were able to ask questions and build their own base of confidence from which to solicit campaign funds.

Each of these volunteers then selected three prospective donors to approach for a gift. The solicitations are taking place now. Unlike the long, Kansas City Kappas have not "gone about as far as they can go." Under Marty's supervision, the commitment and hard work of these volunteers will provide the impetus to reach the \$300,000 goal set by Kansas City. We're counting on Kappas all over the country to follow this example. A few interested and determined members *can* make a difference.

Stay tuned for the next up-date...and thank you Kansas City!!



Martha Galleher Cox, P^A—Ohio Wesleyan

A Campaign Capsule

THE GOAL

To raise \$3,000,000 for the purpose of establishing an endowment fund to...

- * Expand the Fraternity SCHOLARSHIPS.
- * Build a LIFESKILLS PROGRAM.
- * Preserve our past through the HERITAGE MUSEUM.

THE REASON

- * Enhanced scholarship aid and grants will give more bright, deserving students —Kappas and non-Kappas— increased educational opportunities.
- * Kappa is committed to helping her members build the lifeskills they need for effective living by meeting the challenges, and taking advantage of the opportunities facing women in today's society.
- * The Heritage Museum links Kappa's past and future in a very special way. Additional support is essential so the Museum can continue to preserve and exhibit Fraternity memorabilia, depict the evolution of women's role in society, and portray times-long-past.

The Structure

- * Canada and the United States are divided into ten regions with Regional and Local Chairmen and volunteers being trained in fund-raising. Parallel campaigns are being conducted in the two countries as the interest from Canadian gifts will be allocated to Canadian recipients and projects.
- * Each alumnae group and active chapter is being asked to make the Adelphe Campaign its fundraising focus for the 1989-1990 fiscal year.
- * Every Kappa will be kept informed about Campaign progress and given the opportunity to participate through a series of articles in *The Key*.

THE VOLUNTEERS

- * Kappas are leaders, doers, and actively involved in their communities. This valuable resource is the key to success of The Adelphe Campaign.
- * The Adelphe Campaign depends upon Kappas willing to offer their sisters an opportunity to create a stronger Fraternity — a Fraternity which will continue to grow and prosper in the twenty-first century.
- * Volunteers will be working in each region. Asking for campaign pledges is a must for Adelphe success.
- * As volunteers join The Campaign, staff members will conduct training sessions in effective fund-raising techniques. Every support necessary for making volunteer jobs easier and more successful will be provided.
- * **THE TIME IS NOW!! YOUR HELP IS ESSENTIAL. THE ENDOWMENT IS VITAL AND NECESSARY. PLEASE SAY YES AND HELP KAPPA KAPPA GAMMA REACH ITS \$3,000,000 GOAL.**

For more information about volunteer and gift opportunities, contact:

The Adelphe Campaign
P.O. Box 2079; Columbus, OH 43216
phone: 614 228 6515.

In Memoriam

Names which appear in this listing are from information received by Headquarters from February 1, 1989 to June 1, 1989.

Akron, U. of - A

Bowles, Virginia Connor, '29, d. 3/89
Crass, Mary Kroeger, '27, d. 7/86

Alabama, U. of - ΠΠ

Callan, Frances Lipscomb, '27, d. 1/89

Allegheny C. - ΓP

Abecker, Marilyn Miller, '46, d. 2/86
Chester, Mary Waha, '35, d. 4/89
Clark, Sara McQuiston, '21, d. 1/89
Herbert, Frances Barnhart, '12, d. 3/89
Preston, Bessie, '15, d. 3/89

Arizona, U. of - ΓZ

Batten, Katherine Vernet, '30, d. 3/89

Arkansas, U. of - ΓN

Butcher, Mildred, '33, d. 3/89

British Columbia, U. of - ΓY

Ellwyn, Mary Jean Winkler, '33, d. 2/89

Butler U. - M

Greene, Marian Hadley, '18, d. 1/89
Herold, Katherine Brown, '11, d. 10/88
Mustard, Dione Kerlin, '29, d. 2/89

California, U. of, Berkeley - Π¹

Christ, Kathleen Coogan, '35, d. 4/89
Geer, Janice Cowing, '54, d. 4/89
Shaw, Jane Wilson, '51, d. 3/89

Carnegie-Mellon U. - ΔΞ

Hackney, Doris Fast, '44, d. 11/88
Smith, Phyllis Hutcheson, '44, d. 2/89

Cincinnati, U. of - BP¹

Fisher, Helen Lineback, '37, d. 4/89
Stephenson, Evelyn Ogg, '36, d. 1/89
Hendrick, Lucille Gassman, '24, d. 1/87

Colorado State U. - EB

Cochran, Diane Renee, '80, d. 2/89

Colorado, U. of - BM

Gutshall, Nancy Callen, '26, d. 3/89
Winter, Tamara Iles, '43, d. 3/84
Young, J. Susanne Anderson, '43, d. 3/89

Connecticut, U. of - ΔM

Messier, Betty Whitham, '44, d. 8/88

Denison U. - ΓΩ

Billane, Agnes Darrow, '33, d. 4/89
Cutler, Helen Robinson Swift, '29, d. 3/89

Douglas, Emily Spencer, '29, d. 5/88

Floyd, Faye Thomas, '31, d. 1/89

Jones, Vivian Mercer, '33, d. 7/88

DePauw U. - I

Sherwood, Edith Fisher, '28, d. 2/89
Smith, Marion Kinsinger, '25, d. 11/87
Tuttle, Vivian Claffey, '30, d. 1/89

Drake U. - ΓΘ

Bennett, Dorothy Kirk, '21, d. 4/89

Georgia, U. of - ΔY

Sheffield, Nell Collins, '49, d. 2/89

Hillsdale C. - K

Chambers, Marion Kinney, '35, d. 2/89

Idaho, U. of - BK

Leckenby, Virginia Alley, '25, d. 12/88
Riggs, Marie Gilson, '26, d. 12/87
White, Nickoline Kjosness, '22, d. 3/89

Illinois, U. of - BA

Harter, Elizabeth, '30, d. 3/89
Weidenkopf, Marcia Kelling, '30, d. 2/88
West, Martha Walling, '21, d. 2/89

Illinois Wesleyan U. - E

Coffeen, Marcella Heynen, '30, d. 4/89
Holliday, Ina Stover, '22, d. 4/89
Kandler, Susan Havens, '33, d. 1/89

Indiana U. - Δ

Brewer, Ruth Adler, '37, d. 4/89

Iowa State U. - ΔO

Lindahl, Delores Robbins, '57, d. 5/89
Rosenfeld, Constance Carlmark, '54, d. 11/88

Iowa, U. of - BZ

Beh, Clara Foley, '18, d. 4/89
Bryant, Harriet Page, '33, d. 10/88
Gould, Beatrice Blackmar, '15, d. 1/89
Honely, Kathryn Brown, '40, d. 12/88
Kemp, Polly Green, '49, d. 2/89
Miller, Elizabeth Janse, '25, d. 4/89
Van Slycke, Helen Solvsberg, '35, d. 1/89
Zeitler, Blodwen Williams, '18, d. 4/89

Kansas State U. - ΓA

Carlson, Paula McDaniel, '34, d. 4/87
Harwood, Louise Wann, '23, d. 1/89

Kansas, U. of - Ω

Armstrong, Marilyn Kaysing, '34, d. 1/89
Browne, Aletha McGinnis, '18, d. 12/88
Huebert, Virginia Gunsolly, '43, d. 9/88
O'Neil, Margaret Heizer, '13, d. 1/86
Stevenson, Dorothy Ensminger, '20, d. 8/88

Kentucky, U. of - BX

Hudgins, Margaret Hunter, '24, d. 4/89
Morris, Virginia McVey, '24, d. 4/89
Prewitt, Margaretta Ratcliff, '19, d. 3/89
Simmons, Edwina Humphreys, '57, d. 2/89
Stevens, Mary Gordon, '26, d. 3/88

Louisiana State U. - ΔI

Beaird, Mary Hunter, '39, d. 1/89

Maryland, U. of - ΓΨ

Hampton, Constance Cairns, '53, d. 6/88
Kay, Eleanor Baumel, '29, d. 3/89

Massachusetts, U. of - ΔN

Honney, Marie Catherine, '43, d. 6/88

McGill U. - ΔΔ

Jarrard, Helen MacKenzie, '36, d. 1/89

Miami, U. of - ΔK

Bain, Mildred Lunaas, '48, d. 3/89
Gassensmith, Barbara Turk, '52, d. 7/88
Newman, Betty Schafer, '38, d. 12/88

Michigan State U. - ΔΓ

Robinson, Alice Parr, '30, d. 2/89

Michigan, U. of - BΔ

Greaves, Honora Falconer, '22, d. 12/88
McGillicuddy, Ruth Robinson, '32, d. 12/88

Reading, Beth Oroke, '37, d. 5/89

Minnesota, U. of - X

Anderson, Anna McDonald, '14, d. 3/88
Doerr, Mary Cotton, '35, d. 2/89
Gordon, Janet Wilson, '43, d. 1/89
Hoffmeister, Jeanne Groth, '42, d. 4/89

Missouri, U. of - Θ

Gilbertson, Peggy Mayer, '48, d. 10/88
Goodrich, Frances Arnold, '31, d. 1/89
Hopkins, Mary Elizabeth, '18, d. 8/88
Payne, Jane Stanton, '38, d. 10/86
Smith, Helen Hunker, '31, d. 1/89
Webb, Josephine Henry, '27, d. 4/89

Monmouth C. - A¹

Irwin, Marie Thompson, '35, d. 7/88

Montana, U. of - BΦ

Forbis, Josephine Hunt, '11, d. 5/85
Johnson, Thula Weisel, '29, d. 2/87

Nebraska, U. of - Σ

Good, Virginia Foster, '32, d. 4/89
Larimer, Gretchen Beghtol, '31, d. 2/89
Pyles, Bessie Yort, '22, d. 4/89
Williams, Ella Burket, '45, d. 7/87

New Mexico, U. of - ΓB

Cannon, Ruth Dougherty, '21, d. 2/89
Nelson, Mary Pendleton, '51, d. 10/88
Nessley, Julia Henry, '37, d. 3/89
Wait, Elizabeth Shepherd, '22, d. 11/88

Northwestern U. - Y

Currier, Charlotte Moody, '31, d. 1/89
MacRae, Barbara Gibbs, '48, d. 5/89
Martin, Margaret Greer, '17, d. 3/88
Rockwell, M. Phyllis Bradshaw, '35, d. 4/89

Ohio State U. - BN

Hensge, Virginia Moysey, '54, d. 3/89
Kanengiser, Susanne Kittle, '35, d. 12/88
Love, Mary McGaughy, '08, d. 11/88

Ohio Wesleyan U. - P¹

Carmichael, Marcia Main, '42, d. 11/88

Oklahoma, U. of - BΘ

Carson, Mildred Carleton, '30, d. 4/89
Champion, Elizabeth Burke, '27, d. 10/88

The Fall, 1988 issue mistakenly reported the death of Martha Thomson Barclay. We are happy to report that Martha is very much alive and residing in Mason City, Iowa.

Oregon State U. - ΓM

Goldsmith, Irma Coulter, '27, d. 10/88

Oregon, U. of - BΩ

Shields, Elizabeth, '27, d. 2/88
Simonds, Jeanne Sherrard, '36, d. 4/89

Pennsylvania State U. - ΔA

Brown, Lucy Erdman, '32, d. 1/89
Riley, Margaret Tschan, '30, d. 5/89

Pittsburgh, U. of - ΓE

Baird, Mary Johnson, '19, d. 3/89
Baylor, Martha Gourley, '25, d. 2/89
Kidney, Charlotte McMurray, '25, d. 3/89
McCullough, Mary Keener, '19, d. 9/88

urdue U. - ΓΔ
 illing, Marjorie Fant, '31, d. 12/88
 ughes, Virginia Phelps, '38, d. 12/86
 eynard, Joan, '51, d. 2/89
 ayner, Bettyann Van Bergen, '39, d.
 12/88

ollins C. - ΔΕ
 ress, Louise Saunders, '46, d. 12/85
 adley, Helen Jackson, '33, d. 5/88
 all, Eleanor Morse, '32, d. 4/89
 abst, Patricia Wing, '42, d. 4/89

t. Lawrence U. - BB^Δ
 urlong, Virginia Barbour, '32, d. 1/89
 aas, Mary Gunnison, '20, d. 3/89
 owe, Lucile Walter, '35, d. 2/89
 utton, Adelaide Jamieson, '15, d. 12/88

tanford U. - BH^Δ
 owland, Sylva Weaver, '26, d. 1/89
 hisler, Helen Ledyard, '13, d. 8/88

yracuse U. - BT
 raybrook, Isabel Basye, '40, d. 2/89
 arver, Mildred Furbush, '20, d. 1/89
 ern, Doris Venner, '25, d. 11/88
 McCurdy, Mary Derrickson, '31, d. 3/89
 an Keuren, Caroline Blake, '17, d. 7/85

exas Christian U. - EA
 Brown, Carol Wynn, '55, d. 11/88

exas Tech U. - ΔΨ
 Summerford, Susan, '88, d. 5/88

exas, U. of - BE
 Gumm, Mary Borden, '38, d. 12/88

ulane U. - BO
 Waters, July Breazeale, '12, d. 2/89

ulsa U. - ΔΠ
 Greenwood, Lucy Young, '57, d. 11/87

Washington State U. - ΓΗ
 Devin, Mabel Eiffert, '23, d. 2/89
 Dwight Mary Elizabeth, '20, d. 4/87
 Julius, Erma Luann Travis, '44, d. 4/89
 Miller, Astrid Dunlop, '57, d. 1/89
 Miller, Dorothy Sheller, '24, d. 2/89
 Nylander, Dorothy Diffenbacher, '24, d.
 5/88

Sears, Florence Wirth, '22, d. 1/89
 Swanberg, Helen Gorham, '29, d. 8/88

Washington U. - ΓΙ
 Hauck, Lynn Louise Alvis, '65, d. 5/87
 Patton, Marjorie Marquardt, '27, d. 4/89
 Stepp, Mary Gray, '40, d. 10/88

Washington, U. of - BΠ
 Coe, Lucy Jane Campbell, '05, d. 1/89
 Munger, Patricia Murphy, '40, d. 4/89
 Von Der Goltz, Bertha Tremfer, '14, d.
 9/88

White, Katherine Maxwell, '18, d. 3/89

West Virginia U. - BY
 McCann, Mary Goucher, '16, d. 12/88

Whitman C. - ΓΤ
 Dennison, Joan Nye, '51, d. 4/89
 Hareid, Margaret Walker, '33, d. 11/88
 Kennedy, Henrietta Baker, '18, d. 3/89
 Martin, Irma L., '21, d. 10/88
 Nemeth, Lavina Lynch, '35, d. 3/89

Rennewanz, Muriel Burdick, '25, d. 3/89
 Ryan, Doris Hart, '32, d. 2/89
 Watson, Verna Trenner, '25, d. 2/87
 Whitacre, Frances Toner, '34, d. 12/88

William & Mary, C. of - ΓΚ
 Valusek, Dulcie Daniels, '44, d. 2/89

Wisconsin, U. of - H
 Bechaud, Audrey Jeanne, '35, d. 4/89
 Brandt, Adelaide Richardson, '21, d.
 5/88

Burnham, Mary, '27, d. 1/89
 Kinney, Virginia Muller, '27, d. 12/87

Wyoming, U. of - ΓΟ
 Mitchell, Jane Ralston, '38, d. 3/89

CLOSED CHAPTERS

Adelphi C. - BE
 McDonough, Catherine Wilson, '35, d.
 3/89

Adrian C. - Ξ
 Hampton, Ruth Mays, '44, d. 5/88
 Smith, Eloise Alverson, '24, d. 3/89

Boston U. - Φ
 Collins, Priscilla Speare, '33, d. 11/88

Holland, Dorothea Fall, '19, d. 2/88
 Jerardi, Grace, '21, d. 3/89
 Kevorkian, Lovicy Irwin, '25, d. 2/89

Manitoba, U. of - ΓΣ
 Norgrove, Margaret Hurley, '39, d. 11/87

Middlebury C. - ΓΑ
 Lowery, Norma Howard, '27, d. 2/88
 Treat, Mary Brehaut, '39, d. 12/88

North Dakota State U. - ΓΥ
 Butler, Betty Ann Lee, '52, d. 3/89
 Lind, Alice Bender, '29, d. 4/88

Pennsylvania, U. of - BA
 Clark, Beatrice Hayman, '25, d. 3/89
 Groth, Geneva E., '17, d. 1/89
 Sands, Frances McDonald, '49, d. 4/89
 Shryock, Rheva Ott, '17, d. 3/89
 Sobelton, Katherine Frazer, '44, d. 5/89

Swarthmore C. - BI
 Barmettler, Mariana Chapman, '28, d.
 2/89
 Moore, Ann Johnson, '20, d. 10/88

Kappas Cruising



These six Kappas were among a Kappa-affiliated group which took a 12-day Hawaiian cruise in February aboard the Crown Odyssey, the newest of the Royal Cruise Line ships. The group boarded the ship in Honolulu, toured the islands and then sailed back to Ensenada, Mexico. They all agreed that sailing with Kappas made the trip an especially enjoyable experience. Pictured from left are: Dorothy Fernberger Martin, BN—Ohio State; Edith Kohl Ingwersen, BA—Illinois; Vera Lewis Marine, ΔZ—Colorado College, Council escort; Rowena Kohl Cullin, BA—Illinois; Ruth



Lynott Plakias, H—Wisconsin; Mary Hill, daughter-in-law of Nancy Hill; Nancy Hogg Hill, BY—West Virginia.

THROUGH THE *Keyhole*

APPLAUSE, APPLAUSE !!!

...for undergraduate members and chapters
by Mary Yeates Meriwether, $\Gamma\Pi$ —Alabama

Babson—ZA

Carole Zaworski, current chapter President, saw a need in January of 1988 to offer a serving business to assist Bostonians in giving parties. She and a friend organized Golden Servers which handles all party plans, other than catering, from set-up to clean-up. In operation more than a year, the successful business primarily hires Babson students.



A popular item from Witt-linger Woodworks.

Nine years ago **Linda Wittlinger** began Witt-linger Woodworks to produce hand made wooden jig-saw puzzles. When Linda was ten years old she began going to numerous craft shows with her artistic mother who encouraged her to start participating. No two puzzles are alike; each is hand cut from 1/8 inch pieces of birch, on a power saw. Custom designs, which may be ordered, range from whales, butterflies, and alligators to initials, boats and leaves. Many of the orders come from an annual summer Martha's Vineyard three-day craft show.

George Washington— ΓX

Sarah Johnston was honored by her chapter as the first recipient of the Unsung Sister Award key. A member who is always first to volunteer, quietly helps others, and fully participates in all chapter activities, Sarah also received the

Bev Tuller Undergraduate Rehabilitation Scholarship for 1988-89.

Florida—E Φ

Ariel Steele is 1989-90 president of the University of Florida Student Senate. Greeks hold 64 percent of the senate seats although the campus is only 10 percent Greek.

Auburn—EH

The twenty-fifth anniversary was celebrated in style with many of the charter members returning for a weekend filled with reunions, reminiscing, and renewal of commitment to chapter support. Laura Young Palmer is editing a newsletter which keeps EH alumnae informed about chapter, Advisory Board and House Board activities.

New Mexico— ΓB

Gamma Beta was the winner of the President's Cup for "Best All Around" chapter on campus. This award is based on scholarship, philanthropy, public relations, and the personal conduct of individual chapter members.

Duke— ΔB

Delta Betas are setting the philanthropic pace at Duke with their community service project in which they volunteer weekly at the Durham, NC, YMCA, helping out with the after school program. Students ranging from seven to 13 years old spend a few hours at the YMCA each afternoon and once a week the Kappas provide arts and crafts, projects, or games for them.

Washington University— ΓI

Cara Sterling, a senior, was selected to receive the University's outstanding Senior Award from Panhellenic in memory of Adele Starbird. Criteria for selection include: a minimum of a 2.8 GPA, demonstration of outstanding community service, and involvement and support of Panhellenic and the

university. This is the most prestigious Panhellenic award and Cara is in good company — the last three recipients have been Kappas!

Connecticut— ΔM

Magazine sales for ΔM totaled over \$700, contributing over \$350 to the Rose McGill Fund.

Maryland— $\Gamma \Psi$

Melanie Evans has recently been elected president of G.A.M.M.A., Greeks Advocating the Mature Management of Alcohol, a newly formed group at College Park. The main goal of the group is to "better the image of all Greeks on campus." In order to achieve their goal, the members have organized many campus activities including National Collegiate Alcohol Awareness Week.

Cornell— Ψ^A

Emily Sikking was crowned Queen of the 62nd Shenandoah Apple Blossom Festival held last May in Winchester, VA. Emily is the daughter of actor James Sikking who played Lt. Howard Hunter, the "offbeat" SWAT Team leader on *Hill Street Blues*. Emily is considering a career as a doctor or nurse.

Oklahoma—B Θ

Beta Thetas celebrated 75 years of existence in 1989. A two-day reunion was held April 14th and 15th in Norman to commemorate the special anniversary. All Kappa actives and alumnae were invited to attend the myriad of activities and parties.

To Yap State as a Peace Corps Volunteer

For many, graduation from college represents the beginning of our adult lives, one full of unknown opportunities and challenges. Changes in life style are to be expected but few prove to be as dramatic as will be experienced by Karen Donahue, ZZ—Westminster.

In May, the senior from Little Rock, AR, embarked on a 25 month assignment with the Peace Corps. Her destination was Yap State, one of four tropical states that make up the Federated States of Micronesia. The nation is composed of 607

lands located 3,200 miles southwest of Hawaii in the West Pacific.

As a Peace Corps volunteer, Karen will teach English and serve as the community development officer on one of Yap's fifteen islands. Most of the islands have between 100-300 inhabitants and Karen will be the only Westerner on her island. For 25 months she will have no contact with the lifestyle to which she is accustomed.

Karen will probably live in small quarters with a Yapese family of anywhere from 10 to 20. While some islanders have adopted Western dress, many maintain the traditional grass skirts and loin cloth.

A motivated leader who was elected Outstanding Westminster Junior Woman in 1988, Karen plans to totally immerse herself in the Yapese culture. She is committed to not only teaching English and new skills, but also to becoming their friend. The beginning Karen has chosen for her adult life will also be the beginning for the islanders — a new link to the outside world.

Corrections

The Key sincerely regrets the misspelling of Rheva Ott Shryock's name in the Spring 1989 issue, page 33. Correct spelling of the married name of our last Fraternity Grand President (1936-1940) is Shryock.

Aline Christian's maiden name, Pelphrey, was printed incorrectly on page 7, Spring 1989. We apologize for the error.

The Westermann gavel, which is currently used by the Fraternity President at General Conventions and Installations, was pictured in the Spring 1989 issue, page 33. The caption was incorrect. Over the years the history of two Fraternity gavels have become entwined and *The Key* is glad to set the record straight. In 1904 the Grand Council presented the Westermann gavel to May C. Whiting Westermann, Σ —Nebraska, Grand President 1902-04 and 1922-26; she also served as Fraternity Historian 1925-34 and edited *The History of*

INTERNATIONAL KAPPA NEWS

London Alumnae Honor Two



From left: Diane Peek Ofner, $\Delta\Psi$ —Texas Tech; Mary Kay Fender Hoerneman, $\Delta\Lambda$ —Miami.

The London Alumnae Club recently recognized **Mary K. Fender Hoerneman**, $\Delta\Lambda$ —Miami Univ., for her outstanding leadership in promoting volunteerism in the United Kingdom with its Achievement Award for Community Service. The group also honored **Diane Peek Ofner**, ΔY —Texas Tech, with its Achievement Award for Leadership in the Business Community.

Serving two terms as president of the London Junior League, Mary Hoerneman has been successful in attracting both English women and those from the international community as members. The American community in London has actively sought ways of showing English women how important volunteering could be to their country. Mary has won the respect of the Government and its cooperation in joining League efforts to make the U.K. a better place to live, a safer place for children, and placing the volunteer

in active, meaningful programs rather than "Lady Bountiful" positions. Under Mary's leadership the League is now involved in training programs throughout the Southwest of England.

Diane Ofner, an Interior Architect, owns her own Design Consulting firm in London and has become internationally known with projects to her credit from Indonesia, Singapore, Brunei, Switzerland, to Texas and New York. She combines the roles of wife, mother, career woman, and volunteer with outstanding results. The club feels she is a wonderful "role model."

The London Club invites Kappas studying or working in England to contact them for fun, sisterhood, and assistance. Write Jan May Tollas, $\Delta\Sigma$ —Oklahoma State; Holly House, Burwood Rd.; Walton-on-Thames; Surrey, England.



Teatime for Prince Charles and London Junior Leaguers; standing far right is Mary Kay Fender Hoerneman, League president.

Kappa Kappa Gamma Fraternity 1870-1930. As our Fraternity Historian explains, it was the Monmouth gavel which was carved from the walnut stair rail of "Old Main" and presented to the Fraternity in 1928 by Mrs. Thomas H. McMichael, a member of Pi Beta Phi and wife of

the fourth president of Monmouth College. Neither gavel was ever used by Alpha Chapter. The Monmouth gavel and the Westermann gavel are both cherished memorabilia of the Fraternity. Watch for a forthcoming article on gavels.

THROUGH THE *Keyhole*

Key Mail

I have not been an active alumna nor do I usually read *The Key*. The Summer 1988 issue happened to fall open to "A Goal for the Dying." I have been a Hospice volunteer for five years here in Danville, IL. This was a wonderfully giving, wonderfully instructive article and I commend you for printing it. I plan to make copies and distribute them.

—Janell Farrell Graham,
ΓA—Kansas State



The Rainey family

I am a Kappa alumna who regularly reads *The Key* fairly thoroughly. I've noticed that often you feature successful Kappas in various fields: the arts, media, education, business, government, volunteer work. However, I've observed a neglected group: mothers.

Please don't neglect Kappa mothers and their families. Motherhood is not less significant to Kappa than are other achievements. Indeed, mothers hold the future. There will not be the quality of pledges in the years ahead if we do not sacrifice now and commit to raise our children securely. I challenge you to do a feature article on Kappa moms. Recognize us. Encourage us. Support us. Believe in our value to Kappa.

—Barbara Peterson Rainey,
ΓN—Arkansas

I received my Winter issue of *The Key* today and have already read it through. It is one of the most helpful issues I have read. I will receive my master's degree in music history in May and am anxiously and eagerly anticipating my

first job. Would you please send more information on the CHOICES program?

It is exciting to be a Kappa alumna and to be a part of a changing and always improving organization. I cherish my active days as a Kappa, but look forward to many more years of service as an alum.

—Tiffany Bettis, ΔΠ—Tulsa

I would like to compliment you on a fantastic Winter issue. I thought the article on ethics was simply wonderful! I have wondered what has become of our ethics. When I pledged Kappa six years ago, it was because I discovered a group of women who, besides friendship and laughter, offered some answers and goals to obtain. It takes honesty and integrity to decide which group to join, where the type of women and the way they live their lives are in harmony with one's beliefs. Kappa and its values can help more clearly define these beliefs. If our dear Ritual is really listened to and kept within our hearts, it can guide us. I can honestly say I have often recited to myself what to really be "seeking" in life, in another person, in times of uncertainty. There is something about those two words

The Key welcomes letters and will periodically print as many as space allows. This is the third issue published by the current staff and in the new format. Let us know what you think. We also invite your comments about the Fraternity or issues facing college women today. Letters should include the writer's full name, chapter, address, and phone number, and may be edited for the purposes of clarity or space. Mail "Letters," information for "Applause" and "Profiles" to: Cynthia McMillan Lanford (William), Editor; 3403 Firethorn Dr.; Tuscaloosa, AL 35405; 205-553-7021.

Send information for "The Alumnae Hoot Line" to: CiCi Williamson; Box 188; Alexandria, VA 22313; 703-836-1428.

and the phrase that seem to answer most of my uncertainties.

I enjoy reading articles about the ideas and feelings of Kappas and how Kappa has influenced the way they live their lives. Kappa has certainly made a change in my life.

—Andrea M. Szylvian
ZΔ—Vermont

CLASSIFIED

Super Seals

1 1/2" gold and silver circles
with KKG coat of arms,
self-sticking seals.

20 for \$3.00 (including postage)

Offered by Mu-Butler Chapter & Alumnae

Send your order to:

Super Seals
5503 East 72nd Place
Indianapolis, IN 46250
(317) 849-2595



Immediate Delivery.

I DID IT! Produced a book of my family recipes for siblings, relatives, in-laws and others. Let me do it for you, too. It's my specialty. Ask for samples.

Molly DeHaven, Desk Top Inc.
P.O. Box 737
Beaver Dam, WI 53916
(414) 887-7419

REFERENCES WANTED! by all Kappa Chapters.

Don't you know a young woman who would be an excellent Kappa? Won't you assist her and the chapter by introducing her with a reference? A Membership Data Form is in this issue. See the Spring issue of *The Key* for chapter and Alumnae Reference Chairmen addresses. Contact your PDC, PDA or Director of Membership for assistance.

KAPPA BUSINESS OWNERS

Please send catalog/product information for apparel, accessories, decorative accessories, gifts, paper goods, and miscellaneous items to:

KKG Merchandising/Licensing
4423 Mt. Paran NW
Atlanta, GA 30327

Include wholesale price list and terms.

CLASSIFIED ADS in *The Key* are being accepted from members of Kappa Kappa Gamma. For rates and further information contact Susan Schmitt; 4001 WETHERBURN WAY; NORCROSS, GA 30092; (404) 441-0946.

HAVE YOU MOVED, CHANGED YOUR NAME OR CAREER?

Please provide Headquarters with current information.

Maiden Name _____ Chapter _____ Initiation year _____

Career: _____

Check if you are currently: Alumnae Officer ☐ House Board Officer ☐ Adviser ☐

This is notification of change in (check): Name ☐ Address ☐ Career ☐

Husband's name: _____

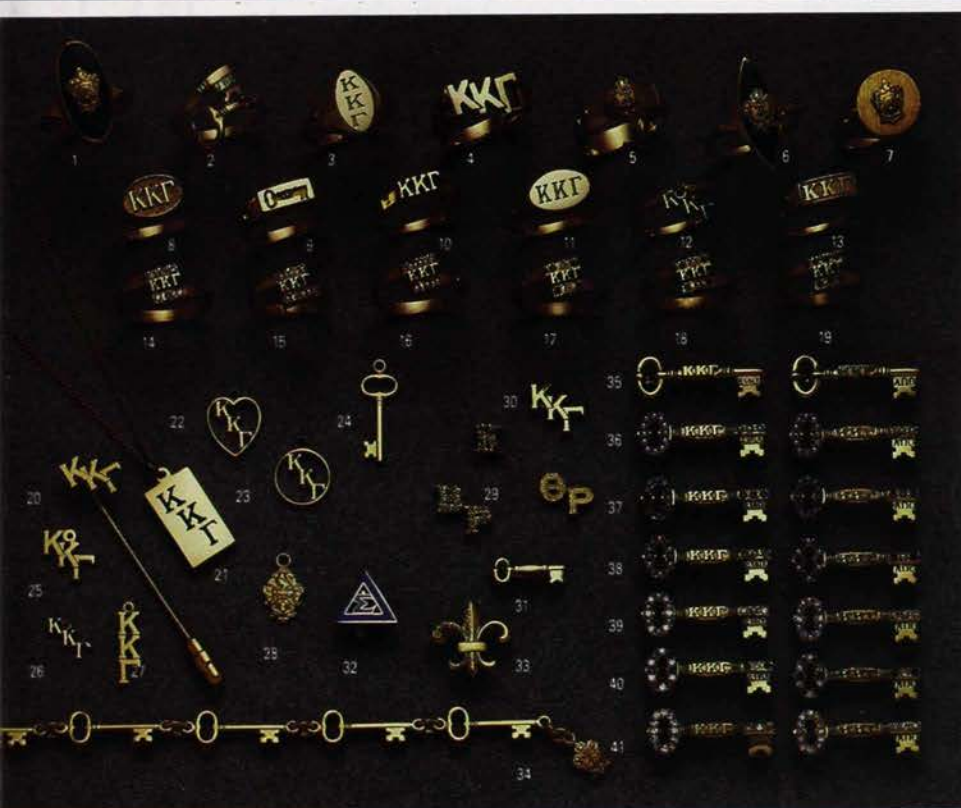
Name and Address if Different from Mailing Label

Miss/Ms./Mrs. _____ Last _____ First _____ Middle/Maiden _____

Street Address _____

City _____ State _____ Zip _____ Foreign City/Country _____

Send to: KKT Fraternity Headquarters, P.O. Box 177, Columbus, OH 43216



Burr, Patterson & Auld Company

GREEK LETTER CHAPTER GUARD PINS

Please specify chapter letters _____

	10K	GK
29. Plain Single Letter	\$ 22.00	\$ 10.00
Plain Double Letter	27.50	12.00
Chased Single Letter	24.20	12.00
Chased Double Letter	29.70	15.00
Crown Pearl Single Letter	26.40	29.00
Crown Pearl Double Letter	60.50	44.00

NOTE: Guards available in ruby, sapphire, emerald and diamond stone combinations. Price available upon request.

PINS

	10K	SS	GK
30. Monogram Recognition Pin	\$ —	\$ —	\$ 3.25
31. Recognition Key	16.00	—	4.00
32. Pledge Pin (Silver Finish)	—	—	2.00
33. Fleur-de-Lis Pin	36.30	18.00	17.00
Fleur-de-Lis Pin with Three Pearls in Bar (not shown)	38.50	20.00	19.00

BRACELETS

	10K	10K	SS	GK
34. Key Bracelet with Coat of Arms	\$308.00	\$192.50	\$ 75.00	\$ 75.00

BADGES

	10K
35. Plain Badge	\$ 38.00
36. Crown Pearl Badge	60.00
37. All Sapphire Badge	61.60
38. Sapphire & Pearl Alternating Badge	59.00
39. Diamond & Pearl Alternating Badge	125.00
40. Diamond & Sapphire Alternating Badge	135.00
41. All Diamond Badge	195.00

NOTE: For Enameled Letters, add \$1.00 to the above prices.

(GK) Goldplated is a 14K electroplate

(SS) Sterling Silver

RINGS

Please specify ring size _____

	14K	10K	SS
Imperial Onyx Ring	\$165.00	\$121.00	\$ 50.00
Key Ring	132.00	93.50	35.00
Vertical Incised Letter Ring	132.00	93.50	35.00
Greek Letter Ring	165.00	121.00	50.00
Sweetheart Ring	110.00	82.50	35.00
Rainbow Marquis Ring	121.00	93.50	40.00
Crest Signet Ring	126.50	99.00	45.00
Raised Letter Remembrance Ring	132.00	93.50	35.00
Scottsdale Incised Key Ring	121.00	88.00	30.00
Mini Monogram Ring	88.00	66.00	30.00
Horizontal Oval Incised Letter Ring	132.00	93.50	35.00
Dangle Ring	66.00	44.00	20.00
Raised Letter Signature Ring	132.00	93.50	35.00
Philly Diamond Ring	264.00	220.00	—
Philly Alternating Pearl/Diamond Ring	231.00	187.00	—
Philly Crown Pearl Ring	165.00	121.00	—
Philly Alternating Sapphire/Diamond Ring	236.50	192.50	—
Philly Alternating Sapphire/Pearl Ring	176.00	132.00	—
Philly Sapphire Ring	181.50	137.50	—

STICKPIN

	14K	10K	SS	GK
20. Monogram Recognition Stickpin	\$ —	\$ 33.00	\$ 20.00	\$ 16.00

LAVALIERES

	14K	10K	SS	GK
21. Ingot	\$ 66.00	\$ 46.20	\$ 11.00	\$ 11.00
22. Heart	34.10	25.30	11.00	11.00
23. Circle	34.10	25.30	11.00	11.00
24. Key	33.00	24.20	11.00	7.00
25. Staggered letter	33.00	24.20	11.00	7.00
26. Mini Staggered Letter	22.00	14.30	11.00	7.00
27. Vertical Letter	33.00	24.20	11.00	7.00
28. Crest	40.70	27.50	11.00	11.00

NOTE: The prices above do not include neckchain; add \$5.00 to above prices for 18 inch gold-filled or sterling silver neck-chain.

Orders for official badges must be prepared by the chapter corresponding secretary on official order forms obtained from Fraternity Headquarters. Prices are subject to state taxes for Indiana residents. 25% forfeiture for cancelled orders already in production.

MAIL PREPAID ORDERS TO:

**BURR, PATTERSON
& AULD COMPANY, INC.**
Post Office Box 800
Elwood, IN 46036
(317) 552-7366
1-800-422-4348

Send all notices of address changes and member deaths to KKT Headquarters, PO Box 177 Columbus, OH 43216.

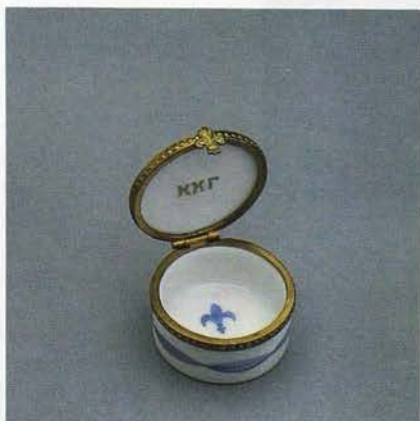
Address Correction Requested

Nonprofit Organization
U.S. POSTAGE
PAID
BIRMINGHAM, AL
PERMIT NO. 182

S & D
Fine Collectibles



Kappa Kappa Gamma Heart—Sure to please with a pleasing combination of blue iris, fleur-de-lis and gold keys. Again, the hinge is handfitted with the little handmade fleur-de-lis clasp. Inside the top of the box you will find the Greek letters KKT with the blue iris. Approx. 2" long. **\$85⁰⁰**



Kappa Kappa Gamma Round Box—The perfect piece to finish the collection with the gold key tied with a big blue bow and tiny blue iris. Handcrafted hinged top with handmade fleur-de-lis clasp. Inside top of box Greek letter KKT with the fleur-de-lis painted inside bottom of box. Each piece is signed by the artist. What a delight to be able to collect all three of these. **\$65⁰⁰**

Limoges *Hand Painted* *Porcelain Boxes*

DESIGNED EXCLUSIVELY FOR
KAPPA KAPPA GAMMA

S & D Fine Collectibles commissioned these boxes to be designed by a family of master craftsmen and artists in the south of France. These boxes are exquisite heirlooms to be enjoyed now and for many years to come.



Kappa Kappa Gamma Trunk—Handpainted in an adorable combination of blue iris, blue fleur-de-lis and tiny gold keys. The hinge is handfitted with tiny handmade fleur-de-lis clasp. Open and you will find the Greek letters KKT on the inside top of the box with the tiny gold key painted on the bottom. Perfect for holding her pin or necklace or just to enjoy. 2" long, 1½" tall. **\$75⁰⁰**

Add \$3.50 for postage.
Texas Residents add sales tax. Send check or money order to:

S & D Fine Collectibles
P. O. Box 8048
Tyler, Texas 75711

(If you should have a question you may call Shirley Dickerson (214) 593-5845 Monday through Friday.)