

FRATERNITY DIRECTORY.

Grand Council.

GRAND PRESIDENT—May C. Whiting Westermann, St. Louis, Mo.
Address—Mrs. Theodore Westermann, 5178 Morgan St., St. Louis, Mo.
GRAND SECRETARY—Mary D. Griffith, . . . 1529 Green St., Philadelphia, Pa.
GRAND TREASURER—Virginia Sinclair, 3347 I St., San Diego, Cal.
GRAND REGISTRAR—Elmie Warner, 171 Oakdale Ave., Cleveland, O.
EDITOR OF "KEY"—Lucy Allen Smart (Mrs. George Smart),
161 Princeton St., Cleveland, O.

Deputies.

GRAND PRESIDENT'S DEPUTY—Martha Blanche Hargreaves,
1528 R St., Lincoln, Neb.
GRAND SECRETARY'S DEPUTY—Mary R. Scattergood,
471 N. Marshall St., Philadelphia, Pa.
GRAND TREASURER'S DEPUTY—Flora B. Jones, E. Monroe St., Bloomington, Ill.
GRAND REGISTRAR'S " —Maude Herndon, 50 Spruce St., . Akron, Ohio.
EDITOR'S DEPUTY—Marion E. Twiss, . . . 116 Sherman Ave., Columbus, O.
HISTORIAN—Minnetta Theodora Taylor, Greencastle, Ind.
DIRECTOR OF CATALOG—Mary D. Griffith, 1529 Green St., Philadelphia, Pa.

Alumnae Associations.

BOSTON ASSOCIATION—Miss Edith R. Blanchard, 73 Chestnut St., W. Newton, Pa.
NEW YORK ASSOCIATION—Mrs. J. E. Welch, . . . 10 W. 66th. St., N. Y.
BETA IOTA ASSOCIATION—Miss Elizabeth Dinsmore,
1617 Green St., Philadelphia, Pa.
SYRACUSE ASSOCIATION—Miss Mary E. Todd, 742 S. Beech St., Syracuse, N. Y.
PHILADELPHIA ASSOCIATION—Mrs. M. C. Betts, . . . Stanfair Rd., Cynwyd, Pa.
PITTSBURGH ASSOCIATION—Mrs. McIlyar H. Lichliter, . . . Verona, Pa.
COLUMBUS ASSOCIATION—Miss Henrietta Kauffman,
University Grounds, Columbus, O.
CLEVELAND ASSOCIATION—Miss Edith M. Twiss, 47 Elberon Ave., Cleveland, O.
AKRON ASSOCIATION—Miss Louise Horix, . . . 359 Silver St., Akron, O.
WOOSTER ASSOCIATION—Miss Cora Hoezel, . . . Nold Ave., Wooster, Ohio.
ADRIAN ASSOCIATION—Miss Anna M. Owens, 160 W. Maumee St., Adrian, Mich.
DETROIT ASSOCIATION—Miss Lulu B. Southmayd, 1141 Third Ave., Detroit, Mich.
BLOOMINGTON (Ind.) ASSOCIATION—Mrs. L. Van Buskirk,
321 N. Walnut St., Bloomington, Ind.
INDIANAPOLIS ASSOCIATION—Miss Inez Elliott,
1566 East Market St., Indianapolis, Ind.
GREENCASTLE ASSOCIATION—Mrs. Charles S. Preston, . . . Greencastle, Ind.
BLOOMINGTON (Ill.) ASSOCIATION—Miss Grace Parker, . . . Bloomington, Ill.
CHICAGO ASSOCIATION—Mrs. Daniel Du S. Otsott, 222 W. 65th St., Chicago, Ill.
MADISON ASSOCIATION—Miss Juliet Thorpe, . . 427 N. Butler St., Madison, Wis.
IOWA CITY ASSOCIATION—Miss Maud C. Kingsbury,
418 N. Clinton St., Iowa City, Ia.
ST. LOUIS ASSOCIATION—Mrs. Herbert S. Morriss,
5634 Bartmer Ave., St. Louis, Mo.
MINNESOTA ASSOCIATION—Mrs. H. L. Wilkins,
1805 Ernerison Av. S., Minneapolis, Minn.
LINCOLN ASSOCIATION—Miss Stella B. Kirker, . . 636 So. 17th St., Lincoln, Neb.
KANSAS CITY ASSOCIATION—Mrs. N. L. R. Taylor,
1014 E. 15th St., Kansas City, Mo.
DENVER ASSOCIATION—Miss June Willits, . . . 638 30th Av., Denver Col.
PI ASSOCIATION—Miss Alice Rising, . . . 2203 Chapel St., Berkeley, Cal.
WASHINGTON STATE ASSOCIATION—Miss Ada Starkweather,
509 Ninth Av., Seattle, Wash.

CORRESPONDING SECRETARIES.

Alpha Province.

- Phi, Boston University, Boston, Mass.—Ethel M. Rich, 12 Somerset St., Boston.
Beta Epsilon, Barnard College, New York City—Alice Haskell, 501 W. 120th St., New York, N. Y.
Psi, Cornell University, Ithaca, N. Y.—Margaret Rolston, Sage Hall, Ithaca, N. Y.
Beta Tau, Syracuse University, Syracuse, N. Y.—Clara E. Mac Farlane, 718 Irving Ave., Syracuse, N. Y.
Beta Alpha, University of Pennsylvania, Philadelphia, Pa.—Ida M. Solly, 4725 Leiper St., Frankford, Philadelphia, Pa.
Beta Iota, Swarthmore College, Swarthmore, Pa.—Elizabeth Hall, Swarthmore, Penn.
Gamma Rho, Allegheny College, Meadville, Pa.—Phylinda Gaston, Meadville, Penn.

Beta Province.

- Lambda, Buchtel College, Akron, O.—Clara Brouse, 493 E. Market St., Akron, O.
Beta Gamma, Wooster University, Wooster, Ohio—Mary McKinley, Bever St., Wooster, Ohio.
Beta Nu, Ohio State University, Columbus, Ohio—Ethyl Woodbury, 1149 Neil Av., Columbus, Ohio.
Beta Delta, University of Michigan, Ann Arbor, Mich.—Jessie E. Bane, 836 Tappan St., Ann Arbor, Michigan.
Xi, Adrian College, Adrian, Mich.—Mary J. McCollum, South Hall, Adrian, Mich.
Kappa, Hillsdale College, Hillsdale, Mich.—Edith Cold, 5 W. Fayette, St., Hillsdale, Mich.

Gamma Province.

- Delta, Indiana State University, Bloomington, Ind.—Leona Turner, Kappa House, Bloomington, Ind.
Iota, DePauw University, Greencastle, Ind.—Nona Burkett, 510 E. Seminary St., Greencastle, Ind.
Mu, Butler College, Irvington, Ind.—Eunice Darnell, Irvington, Ind.
Eta, University of Wisconsin, Madison, Wis.—Florence M. De Lap, 425 Park St., Madison, Wis.
Beta Lambda, University of Illinois, Champaign, Ill.—Louise Howell, 404 John St., Champaign, Ill.
Upsilon, Northwestern University, Evanston, Ill.—Julia M. Sohrbeck, Willard Hall, Evanston, Ill.
Epsilon, Illinois Wesleyan University, Bloomington, Ill.—Elizabeth Roe, 811 N. Evans St., Bloomington, Ill.

Delta Province.

- Ghi, University of Minnesota, Minneapolis, Minn.—Mary B. Morgan, P. O. Box 1159, University of Minnesota, Minneapolis, Minn.
Beta Zeta, Iowa State University, Iowa City, Ia.—Joanna G. Strange, Box 1802, Iowa City, Ia.
Theta, Missouri State University, Columbia, Mo.—Clara L. Shelton, Kappa House, Columbia, Mo.
Sigma, Nebraska State University, Lincoln, Neb.—Mabel H. Stephen, 321 N. 16th St., Lincoln, Neb.
Omega, Kansas State University, Lawrence, Kan.—Maud Olander, Kappa House, Lawrence, Kan.
Beta Mu, Colorado State University, Boulder, Col.—Alice I. Parks, 1083 14th St. Boulder, Col.
Beta Xi, Texas State University, Austin, Tex.—Mary W. Stedman, 2007 Wishita St., Austin, Tex.
Pi, University of California, Berkeley, Cal.—Myrtle L. Sims, 2600 Bancroft Way, Berkeley, Cal.
Beta Eta, Leland Stanford Jr. University, Cal.—Margaret Burkhalter, Stanford University, Cal.

THE KEY

VOL. XXI.

APRIL, 1904.

No. 2.

THE ALUMNAE ASSOCIATIONS OF KAPPA KAPPA GAMMA.

THIS space might well be occupied by a brief but complete history of the Alumnae Associations of Kappa Kappa Gamma. An account of each Association has so recently been published in Kappa's Record, however, that only a few general points will be added here.

It was at the Evanston convention in 1896, that Kappa's one associate chapter, located in Chicago and known as Beta Theta, surrendered its charter after a struggle of several years' duration, declaring itself "unable to meet the requirements of an active chapter." But while a chartered Alumnae Association was dying, informal organizations were flourishing in Madison, Minneapolis, Boston and Bloomington, Illinois. Consequently convention provided for the recognition of such organizations of alumnae as should number not less than twelve and meet four times a year. A delegate from an Alumnae Association would be granted a seat in convention and the privilege of the floor, but no vote. Few additional requirements have since been made. As many privileges as possible and as few responsibilities as may be, is the spirit of the Grand Council and the chapters toward Alumnae Associations.

Unusual interest in the convention of 1898 brought two delegates from Alumnae Associations to Lincoln, and in 1900 four delegates had seats and served on committees in convention.

During the two years that followed the Grand Council worked systematically toward the establishment of Alumnae Associations and were gratified to have the number in the KEY directory reach

seventeen. From these seven delegates were present at the last convention. One of the most successful features of this convention was Alumnae Day, devoted entirely to the presentation and discussion of matters of alumnae interest.

The present Grand Council has considered the alumnae situation earnestly, and has spared no effort to strengthen and render more effective the Associations already formed and to establish new ones. As a result the January KEY shows a roll of twenty-five, while there are several chapter organizations which have never appeared in the magazine and at least three regular Associations which are being organized. It is with much confidence that the Grand Council looks to these Associations, not merely to send delegates to Columbia next August, but to send many visitors who shall be counted in the two hundred which is our aim for 1904.

Four years ago ten alumnae subscribed for the KEY. In two years this number was increased to sixty, and in two more to two hundred. Interest craves knowledge and knowledge increases interest. It is impossible to estimate what this larger circulation of the magazine means to the fraternity.

But what is the purpose of all this? Although we are but beginning to realize it, Kappa Kappa Gamma ceased to be an undergraduate organization when her first member went out from college. Her ideals are not for college days only, but for the years of a lifetime. As the fraternity's circle of influence has widened, her responsibilities have mightily increased.

The burden of maintaining the highest ideals socially, in scholarship and in character, combined with the increasing demand that fraternities shall prove their right to exist by being an absolute power for good in the college communities in which they exist, has become too great to be borne by the active girls alone. For their own sakes as well as for the future of the fraternity, the alumnae must share it.

That Kappa Kappa Gamma may mean more to the undergraduate because of the inspiring interest of noble Kappa women, that Kappa Kappa Gamma may never cease to be an inspiration to those who have worn the key, the Grand Council invites the interest, the sympathy, the co-operation of every Kappa, young and old, in behalf of the Alumnae Associations.

MAY CYNTHIA WHITING WESTERMANN,
Grand President.

**THE COLLEGE FRATERNITY A FACTOR IN BETTER
CITIZENSHIP.**

IN an address on the relation of school and State, Senator Beveridge, of Indiana, recently said: "The glory of all American colleges should be that they produce citizenship as well as culture. And of these, citizenship is more valuable than culture. Culture is important. Citizenship is indispensable." We, who know the college Greek letter fraternity, believe that it is one of the most effective agents of college life in producing this splendid result. The very nature of the fraternity makes it a power for such social service in the undergraduate body. If the work of the fraternity does not stand side by side with the work of our great professors in the preparation for useful, effective citizenship, the fault lies in the conditions under which the local body has grown and not in the fraternity idea.

The Kappa Kappa Gamma Fraternity has just proposed a plan by which the national Greek letter fraternities shall unite in a broader social service to the colleges where they are located than has yet been known. In this plan they expect the co-operation of the faculties of the colleges and of the alumnae associations of the fraternities. This work will naturally be in the co-educational colleges as it has never been the policy of the national women's fraternities to enter colleges exclusively for women, although they are located in a few colleges, such as Barnard, where the system is co-ordinate.

Kappa Kappa Gamma, founded in 1870, one of the oldest and largest of the seven national women's fraternities, now has twenty-nine active chapters and twenty-six alumnae associations, with an entire membership in the United States of four thousand.

Kappa Kappa Gamma was not only the first woman's fraternity to publish a magazine, but was the first woman's fraternity, and one of the first fraternities (men's or women's) to adopt what is now so well known as the Grand Council form of government. This, together with the high standard of her magazine, has given Kappa the reputation of being the best organized and most progressive of the women's fraternities. Several memorial libraries have been established by different chapters as tributes to members

who have died. For a number of years the chapter at Pennsylvania University has maintained a table at Wood's Holl as a prize open to all students in the biological department of the university. At the last convention, held in Ann Arbor, Mich., the fraternity took steps toward the permanent endowment of a table at Wood's Holl and the establishment of a scholarship fund. Thirteen of the chapters now own or rent their own chapter houses, and in several large colleges the alumnae of the fraternity have built these homes for the chapters. It was in the New York Alumnae Association of Kappa Kappa Gamma that the plan for uniting the strength of all fraternities in a great social service movement originated. This association, established in 1896, has a membership of over one hundred, which represents eighteen of the twenty-nine active chapters.—*From Social Service.*

E. JEAN NELSON PENFIELD,

President, New York Alumnae Chapter of the Kappa Kappa Gamma.



SOCIAL SERVICE EVENING.

THE New York Alumnae Association of the Kappa Kappa Gamma, one of the oldest and best known of the college fraternities for women, was entertained at one of the Institute's Social Service afternoons, Saturday, January 30th. Mrs. William Warner Penfield, the president, presided, and the place was filled with former members of the fraternity living in and around New York.

The gathering was held to develop the ideas for some definite social service to be undertaken by this branch of the alumnae of the Kappa Kappa Gamma, which would unite the members and concentrate their efforts. After Dr. Strong's address explaining some of the functions of the Institute and the Museum of Security which it hopes to establish, followed by Dr. Tolman's practical illustrations, several suggestions were given by women already interested in some line of special service. Miss Susan Olmstead, principal of the Girls' Evening Schools, urged college women to enter in greater numbers into the teaching of the evening schools. She said: "Dr. Maxwell is particularly anxious to get college



INTERIOR, BETA MU—COLORADO STATE UNIVERSITY.

women and men in the evening schools. I do not see what social service could appeal to us more than that of giving help, sympathy and interest to boys and girls and men and women who have been forced to leave school at an early age, and are striving to educate themselves, to fit themselves for better things.

"In our East Side evening high schools we have pupils from young girls up to gray-haired women. They come to us after a long day of toil, many of them without stopping for dinner, in order to have time at the typewriters. Could anything appeal more to one's sympathies?"

Mrs. Sidney A. Saunders, in a few remarks, drew attention to the fact that the responsibility for educating public opinion rests much more strongly on all women than it did thirty or forty years ago, and rests more particularly on college women, because of the advantage they have enjoyed, and upon fraternity women, who have already performed a social service in college by their influence on the younger girls, and who have gained a special *esprit du corps* in their chapter life. Other speakers made brief remarks.

—Social Service.



THE HOME OF BETA MU.

ALTHOUGH our charter was granted to us but three years ago, we have had a house two years and a half; however, this is the first year we have furnished our own home. Each senior, when she graduates, gives us some piece of furniture, and our alumnae members are also very kind in helping us.

It is needless to tell of the happiness of ten girls in a chapter house! All our Kappa sisters who have houses can imagine this or know it already from their own experience. Three times a day we meet in the dining room and frequently have spreads in the evening, where we have jolly times together. Sometimes after dinner we sing, or take out the rugs and dance. Our house is very well arranged for entertaining and we have given a number of informal parties here.

Our hall, two parlors and dining room open into each other and can be used for dancing. Our rooms upstairs are typical college

girls' rooms, with the usual decorations—banners, pictures and posters. The house we will have next year is larger than our present one, and we expect to be better equipped for rushing than ever before.

This year several of our old girls did not return to school, and, as a consequence, we encountered many difficulties at the beginning of the year. Although we often became disheartened, we feel now as though we are well repaid for all our work, and are justly proud of our house and new Kappas.



"A KAPPA VICTORY."

TUNE—Billy McGee McGaw.

There came, one day, to U. of M.
 A dear little innocent maid,
 Who knew not of fraternity ways,
 She'd lived a life so staid.
 A Freshman she was duly enrolled,
 And then the story may soon be told,
 How the frat girls hovered around
 Like bees around a flower ;
 How the frat girls hovered around
 Like bees around a flower.

They tramped the corridors up and down,
 Hunting for her the Profs. ;
 They walked at her side behind and before,
 Seniors, Juniors and Sophs.
 And Latin and French and Geometry,
 Biology, English and History,
 Were suggested to this dear little maid
 To get her an A. B. degree ;
 Were suggested to this dear little maid
 To get her an A. B. degree.

To dinners and dances, for walks and for drives,
 Went this dear little innocent girl ;
 To chocolates, parties and marshmallow roasts,
 Until her brain was awlirl.

But—soon she was pinned with the double blue,
 And to it she'd promised she'd ever be true,
 And—now she is wearing the Golden Key
 Of the Kappa fraternity ;
 And—now she is wearing the Golden Key
 Of the Kappa fraternity.

EDITH DEROLT, *Theta*.

ALUMNAE VOTE AT CONVENTION.

ONE of the noticeable features of our last National Convention was the active part taken by the alumnae and alumnae delegates in all the discussions, many of which were introduced by them. Their arguments were to be distinguished by the broader, more mature views which their several years' experience in the outside world had added to their four years of fraternity life in college. Their viewpoint—the welfare of the fraternity—remained the same, but (may I say it?) their *age* had made simple the complex questions that confronted them during their lives as actives. They represented Alumnae Associations made up of many different chapters, and had heard many of these questions discussed by women from widely different States, as well as in the active chapters, which, we are safe in saying, they frequently visited.

Of course, the alumnae delegates were greatly in the minority, and their voices were less frequently heard, but when one offered an opinion it carried with it the weight of a mind developed by several years of training in a matured Alumnae Association.

This freedom of speech, and the interest displayed in the most insignificant questions, so long as they affected fraternity life or fraternity matters, but intensified the close relationship between the Alumnae Associations and the active chapters—a relationship which seems to be more in evidence at each convention.

It was a disappointment, therefore, to observe the enforced silence of these delegates when the much-discussed questions were put to the convention. The right to discussion was granted them, but not the right to vote! They were compelled to sit in grim silence while certain measures in which they were intensely interested were voted on, to be, probably, defeated by the active vote, when the vote of the farther-seeing alumnae would have saved it!

It seems but just that these delegates should be granted the one privilege that puts them in full standing with active delegates; we alumnae are but grown-up actives, and yet as grown-up actives we wish to claim the privilege of voting at convention—a privilege which only the active chapters can grant us. Remember that you are all fast approaching "alumnahood" yourselves, and it takes but a second to wrest the powers of activehood from you. Let this be one of the first questions decided at our coming convention, and may the granting of it prove only a blessing.

Beta Iota.

KAPPA LIFE AT STANFORD.

ABOUT the middle of what is familiarly known as "Fraternity Row" in the Stanford Campus stands what used to be called four years ago, the "New Kappa House," but which is fast losing its new character and is gathering around it, instead, traditions and associations growing out of our four years' occupancy.

The house itself is of unpretentious architecture of the time of Queen Anne, shingled, with green roof and white window casings, but it has been and is, the scene of so many typical Kappa good times, that it is endeared to each one of us. The reception hall which you enter from the street, with its low, broad fireplace, is the spot perhaps where the girls congregate most frequently, and where the hours slip by almost unnoticed. In front of this fire, the inimitable chafing dish finds its accustomed place, and contributes its share to these informal gatherings that are the very life of the chapter. There is one other part of the house that vies with the hall in our affections, and assumes still greater importance as the scene of impromptu spreads and Bohemian times—that is the third story which has been left in one large room, with alcoves in which at present, three of the girls are living, using the main part as a large sitting room and general gathering place for the rest of the girls.

Our part, too, in the broader social life of the College, we try not to neglect, but it is our intimate life here in the Chapter house that appeals to us most and forms the larger part of that store of Kappa memories that means, and will mean, so much to each one of us.

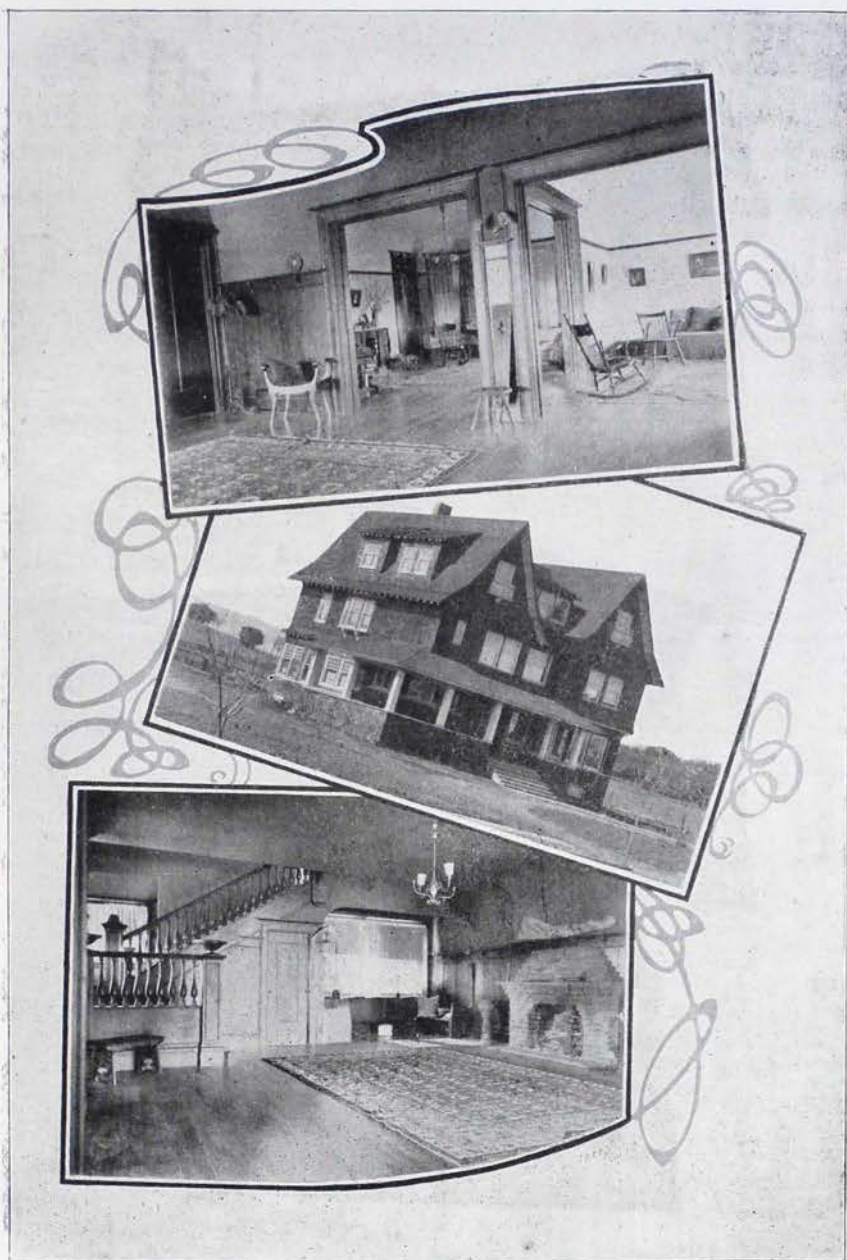
KATE L. GRIDLEY.



A GREETING.

"Do you say you are a Kappa !
 Well, that's enough for me ;
 I am *so* glad to meet you—
 Yes, I see your Key.
 Why, I've been away from school
 For years—it seems to be—
 And not a single Kappa
 Have I had the luck to see !
 Excuse me if I hurt your hand,
 That grip is K. K. G.
 It means the dark blue and the light,
 It means the fleur-de-lis !"

J. G. S., *Beta Zeta*.



BETA ETA CHAPTER HOUSE—LELAND STANFORD UNIVERSITY.

Personal Notes.

BETA EPSILON.

Edith Poor, special, who left college last year, was married on January 5th to Captain James K. Cochrane of the British army.

Mary L. Goldsborough, 1900, has recently announced her engagement to Mr. Edward West of New York.

Altè Stillwell, '99, announces her engagement to Mr. Charles M. Kervan of New York.

GAMMA RHO.

Born, to Mr. and Mrs. C. Van Peters (Elizabeth McCracken) December 25, 1903, a daughter.

Erma Rogers, '03, who is teaching English in the high school at Franklin, Pa., visited the college for a few days in February.

Mrs. Wallace Wilson (Gertrude Reed) entertained her Kappa sisters at her new home January 22.

Born, to Mr. and Mrs. Schawl (Della Greenland) a son.

Florence Stern, '03, is spending the winter in New York studying art.

BETA GAMMA.

Born, to Mr. and Mrs. Robert Childs (Isabel Ihrig) of Syracuse, N. Y., on New Year's day, a daughter.

Mrs. Grace Ihrig Dunaway of Ottawa, Illinois, was called here in February by the death of her sister, Mrs. May Ihrig Campbell of Marion, Iowa.

Mrs. Mabel Douglas Esary of Seattle, Washington, visited here several months this winter.

BETA NU.

The engagement is announced of Mabel Shride, '04, to Mr. Richard Pinger, Professor of Languages at the State Normal School at Cheney, Washington.

The engagement of Marion E. Twiss to William Griswold Smith ($\Delta K \Sigma$, Cornell), of Chicago, is announced. The wedding will be celebrated this summer. Miss Twiss has for four years

edited the department of exchanges of the "KEY" in a manner which has elicited the commendation not only of Kappas, but of members of other fraternities who, when the opportunity was presented, perused the exchange columns with keen interest.

BETA DELTA.

Pearl B. Taylor, '03, announces her engagement to Mr. Herford Graham Fitch, ΦΔΦ, Michigan, '03, of Magdalena, New Mexico.

Grace Morehouse, '02, is teaching at Webster City, Iowa.

Jennie Broad, ex-'00, is teaching at Colorado Springs, Colorado.

KAPPA.

Born, to Mrs. Emily Sage Morgan, of '98, a daughter.

The Alumnae Association have held a number of meetings, electing Frances Ball Mauck, President.

EPSILON.

Rachael Baumann Greenlee is a dramatic reader in Denver, Colorado, where her husband is Assistant Superintendent of Schools.

SIGMA.

Married, December 24, 1903, Vine Gahan, ex-'99, to Arthur Walsh of Lincoln.

Married, February 10, 1904, Kate Heddeus Gallath, '05, to Mr. Leon Crandall of Lincoln.

Mrs. Theodore Westermann came, February 7th, to make an official visit to Sigma Chapter and to attend the wedding of her cousin, Miss Kate Gallath.

Bertha Shidler, ex-'06, of York, Nebraska, spent a week at the Kappa house.

Miss Emily Jenkins, of Fairburg, Nebraska, ex-'04, returned from California the last of February.

Miss Stella Kircher entertained the active and alumnae chapters to meet Mrs. Westermann.

Misses Ruth and Susan Paxson, alumnae of Beta Zeta, spent a few days last week with Sigma.

DENVER.

Mrs. Albert Sechrist left in early February for a trip of six weeks in California.

Born, to Mr. and Mrs. Joseph Yale Parce, Jr., a son, Joseph Yale Parce third, September 22, 1903.

Mrs. L. C. Greenlee in August and Mrs. Henry Burnham in January moved into their new homes on Marion ; Miss Grace also had built during the summer a charming dwelling on Lafayette street.

Born, to Mr. and Mrs. Adna Risley, a daughter, Mary Belle, July 2, 1903, Bloomington, Illinois.

Miss Charlotte Powell is teaching English Literature and History in Wolfe Hall, Denver.

Mrs. L. C. Greenlee has been very active in dramatic lines. Her Children's Recitals have proven very successful and her recitations and interpretations are much appreciated.

Miss Katheryn Todd is Instructor in Carving in the Denver Manual Training High School.

Mrs. (Rev.) Marquis Hornbeck is devoting her time more exclusively to the church work in which she is well known ; she is a most considerate and efficient help to her husband.

Miss June Willits and her mother started for a trip of several months in California, March 15th.

PI.

Elza Lichtenburg is teaching in Walla Walla, Washington.

Edith Henrici is in Paris.

Born, to Mr. and Mrs. Menicanti (Ruth Rising) of Rome, a daughter.

Born, to Mr. and Mrs. William Durbrow (Blanche Terrell), a daughter.

Mrs. Brehm of Washington, a member of the old Pi chapter, has been visiting in Berkeley for some time.



A WORD TO THE NEW KAPPAS.

YOU have now been admitted to the mystic circle, a circle of lasting love and friendship. We have revealed to you our secrets, and our ideal—perhaps not fully; for, noble and far-reaching as it is, this cannot be done in a moment. But you will learn to know it and love it with all your heart, and strive always to live a Kappa life. Be ever mindful of that for which Kappa stands. Let our fraternity, now yours, be a part of your life, of your everyday life. Let every act and word be worthy of a Kappa. This is hard sometimes, I know, but like our loyal sisters, you will, as you grow older, make a stronger, firmer resolution to strive for our ideal.

Remember and think often of the responsibility that you solemnly took upon yourself at your initiation. Fraternity is a serious life of attention to love and duty, and in becoming a member of our fraternity, you became a vital part of it and assumed the duties which all true Kappas have tried to fulfill. You are under obligations to strive on in the desire to know and be our ideal. May you constantly grow deeper into the spirit of pure Kappa love, for only in this way can you get the greatest benefit from Kappahood.

Mu.



WHAT IS WORTH WHILE.

THE ordinary college course of four years passes very quickly to most of us and is apt to consist of a crowded and tumultuous life. Do we ask ourselves often enough if we are making the best of our advantages? The consideration of this will make us better acquainted with the opportunities which are offered, and put us in a position to better absorb the good things about us.

Our college life will mean to us whatever we make it. The life is presented in all its phases for us to choose from, and whatever characteristic world we make of it depends upon each of us individually. Our tendency to become absorbed in the particular,

pressing duties of each day, and not to look beyond them to wider fields, should be overcome by inquiring of ourselves, "What is worth while?"

After we are out of college the memories that will last perhaps the longest are those of fraternity life, and those memories, together with new experiences as an alumna, will be a constant fund of richness.

We must get all we can out of our college life. It is a distinct life, and an underestimated one until after it is out of our reach. By making a constantly careful selection of things that are "worth while," we will accumulate an invaluable asset that nothing can depreciate.

Kappa principles give us a standard by which we measure our ideals of useful womanhood; Kappa love makes us considerate and thoughtful of others; Kappa pride makes us endeavor to be worthy the name which it is our privilege to claim.

Beta Delta.



WHAT CONVENTION MEANS TO US.

ARE you going to convention? This is a question which is asked of almost every Kappa, and the desire uppermost in every loyal Kappa's heart is to be with our Theta sisters in August. Then our dear Kappa mother will gather her children under her wing and as one big family they will be together.

Think what convention means to us, dear sisters; to meet girls and girls whom we have never seen before, but who are far from strangers to us because they wear the little golden key. We can clasp their hands in ours in our beloved grip and instantly feel at home, knowing that we are bound to them by a tie that can never break.

Think what it is to meet our Grand Council, the royalty of Kappadom, so to speak. What an inspiration to meet these women, who are devoting their time to the interest of our great family.

It is inspiring and helpful to have a heart-to-heart talk with the girls of one's own chapter; think how much more so it would be to talk with girls from twenty-eight different chapters, to grasp their conceptions of Kappa ideals, to hear their plans for the future, to share in their ambitions, and to sing our dear old songs

with so many sympathetic voices. Only by being brought in personal contact with our sisters from far and near, can we realize what a blessed thing it is to be a Kappa, and our dear fraternity will mean infinitely more to us after having had these experiences.

After those few short days, Dame Kappa will send her children hurrying back to their own little worlds, and what new ideas will be carried back to the loyal hearts at home. Surely, every Kappa receives good from convention ; if not directly, she imbibes some of the newly-inspired loyalty and enthusiasm brought back by the delegate. So here's to convention ; may as many of us as possible gather within the doors of Theta's hospitable home in August.

ELIZABETH S. ROE.



KAPPA SECRETS.

RUMORED reports have been agitating Kappa Kappa Gamma from time to time, and as convention approaches apace these reports seem to grow in strength and authenticity. "'Twere a shame that it were so"—that anyone would dare to even think of violating the secrecy of Kappa Kappa Gamma, much less put these thoughts into words and plans for action—proceedings nothing less than sacrilege in the eyes of true Kappas.

Think of the founders and alumnae of Kappa who for years and years have guarded her secrets ; noble women who have built up our sorority to what it is, holding as it does to-day the foremost place in national sorority life ; women linked together by those same secrets which bind us to-day ; strengthened and inspired to greater efforts by that common bond.

It may be said that secret societies foster cliques, exclusiveness and snobbishness, but the great work that Kappa has done in moulding, shaping and beautifying the lives of thousands of American women must silence those few whom she seems to, in some unaccountable way, have failed to reach.

This thing *must not be so*, and can one believe that it will be so if every living Kappa is brought to vote upon the subject? In our hearts we *know* that Kappa Kappa Gamma, to a woman, will stand by her secrets as she vowed to do on initiation night.

MARY BROWNSON MORGAN, *Chi*.

DEMOCRACY IN OUR COLLEGE FRIENDSHIP.

“WHAT is she? Nothing!” How often we Kappa girls have heard that said or have said it ourselves—of some “barb” who passes us—or perhaps we say sneeringly, “Oh, she belongs to such-and-such a frat, which does not have the same social prestige in our college that our own does.” I wonder if we Kappas have ever thought that that “barb” or that fraternity girl is as good as we are and has just as big a claim to our friendship as our own Kappa sisters do. Of course, the key binds us closer, it gives us something in common with one another, but it also teaches us to help those about us, and by so doing to live truly noble, womanly lives. Let us strive to speak a pleasant word to one and all about us. It will not harm us, but will help to make us a power with those who are most dear to us.

MABEL H. STEPHEN, *Sigma*.

90

SENTIMENT VERSUS SENTIMENTALITY.

IN the following remarks I shall confine myself to women's fraternities, not as opposed to men's fraternities, but because my knowledge and experience are limited to that viewpoint. Even the most cursory glance over fraternity magazines and songbooks shows what a large part sentiment plays in fraternity life and thought. It is right that this should be so. Why, then, any question, since we take it the value of sentiment is so clearly understood by all except the materialist? First and foremost, because our perception too often becomes dulled as to the dividing line between sentiment and sentimentality. I lay myself open to the charge of heresy when I say that much of what passes with us for sentiment is sentimentality.

Sentiment leads to action; sentimentality leads nowhere, except possibly it may meander to aesthetics. The fraternity should give us a faith, an ideal; for faith is but an ideal. And if our ideal but leads us to a feeling, to a mere sense of pleasure in the ideal itself, it hinders and does not help.

We speak of our “fraternity spirit,” but the words too often are from the lips out. Better no spirit at all than a spirit which leads to no action. The time when fraternity spirit tells is when something, perhaps not agreeable, is to be done and when we

stand ready to do it, heartily, willingly. Sentimentality works itself up to a fine state of feeling under such circumstances, but there it generally ends—vows and promises made to the fraternity are forgotten, for promises lightly spoken are lightly broken.

We may not always feel aright, we may not always act aright, but we can press on to the right as we see the right, for—

“It is but to keep the nerves at a strain,
To dry one's eyes and laugh at a fall,
And baffled get up to begin again;
So the chase takes up one's life that's all.”

MARION R. LAPE, *Beta Alpha*.

§

ALUMNAE MEMBERS OF PAN-HELLENIC.

THE action of the Inter-Sorority Conference, to the effect that there shall be alumnae members of Pan-Hellenic Associations, brings up a question as to the advisability of this under all circumstances. In some chapters the alumnae take a lively interest in local affairs. In such cases, their assistance in Pan-Hellenic would be very valuable. But, it is only natural that those who have left college should have varied interests and that fraternity affairs should become of secondary importance. If this is the case, would their knowledge of existing conditions be sufficient to enable alumnae to act for the good of the chapters? Would it not be more advantageous to have active members in their stead? However, the fact that alumnae had been chosen as members of Pan-Hellenic Associations might stimulate them to take a more active interest in their respective chapters in order that they might become better informed and more capable of acting for the good of the chapter. In this way the chapter would gain their active interest as well as their advice and assistance in the Association.

In some colleges it has been customary to have Pan-Hellenic Associations composed of two members from each fraternity, one of whom was in Pan-Hellenic the year before; the other, one who may be the year following. By this means, there is always one member of each fraternity in Pan-Hellenic who is acquainted with the end and aim of the Association, and its methods of procedure.

—*Psi*.

THE KAPPA KAPPA GAMMA STANDARD.

AS a man is known by his deeds, so a fraternity is judged and ranked by the character and standard of its individual members. We need true, noble women, with high aspirations and a desire for more than the frivolous pleasures of this life. In choosing members for fraternities, I have observed some to have been selected for an especial trait or brilliancy exhibited, while perhaps there would be no other redeeming quality visible. While it may be of honor to gain those greatly talented in any particular direction, yet I believe the best policy is pursued when we seek those equally balanced and thus combine the intellectual, social and beautiful.

A graceful figure and a face beautifully outlined, or a power to attract and entertain, or a mind active and alert, any of these would add great worth to a fraternity, but when the harmonious blending of these three gifts may be found, then the ideal fraternity standard may be reached.

Study the girl you desire, learn well what is true and noble and beautiful in her, and then give her the advantage necessary to display her true character, remembering that the luster of the diamond is only gained by removing the outer roughness and subjecting the gem to a high degree of polish.

GLENN SHANKLIN, *Beta Gamma.*

✽

LOYALTY.

THE strength of our fraternity depends largely on the degree of loyalty each girl gives to her chapter and each chapter to the fraternity at large. If every girl is loyal to the highest ideals of Kappa and is strong and sincere about the little things in life, as a natural result there must be perfect unity in the individual chapter, a unity which strengthens each girl's life, making her worth while, not only to her fraternity but to those with whom at any time she may be associated. It creates that intangible something known as fraternity spirit which makes us sing our fraternity songs with our whole heart in them, making an outsider, a freshman, perhaps, thrill through and through and long to be able to sing them with us. Thus we can fill our house with an atmosphere of wholesome good will and sympathy.

Loyalty is a word peculiarly full of meaning to a fraternity girl. It includes everything which makes a friendship full of honesty, sincerity and a perfect understanding. Every girl must give her best to her friends and there will be mutual benefit.

Let us be sure to give our noblest thoughts to those things worthy of them, not fretting about petty things, thus wearing out our worthy thoughts on things of no moment. Let us be broad enough in our sympathies to be able to see the many things which all girls have in common, and to see beneath the surface, which is shaped greatly by environment. Above all, avoid giving hasty judgments, thus committing ourselves without using our coolest thoughts. Be loyal, for loyalty is the keystone which binds us with infinite strength to one another.

HELEN GREELY, *Pi*.



KAPPA INDIVIDUALITY.

A QUESTION which has lately been discussed among us is, whether Kappa's members owe it to their chapter sister to join a new movement or college association simply because she holds a prominent position in it. Because one of us says a thing is of interest or importance, are we all to acknowledge it as such and give our time and pennies towards its furtherance? I think that this is unnecessary. Our number is comparatively small, college interests are very numerous and time is very short. If we all tried to take an active part in our different sisters' hobbies we should be overcome with work and we could do nothing well. Is it not better to choose what we like to do and to do it well? Individuality will thus be given full sway and Kappa's influence will be wide and strong.

ALICE DRAPER, *Beta Epsilon*.

Alumnae Department

New York Alumnae Association.

The January meeting of the New York Alumnae Association of Kappa Kappa Gamma was held at the rooms of the American Institute for Social Service and proved to be one of the pleasantest meetings in the history of the Association.

After our regular business meeting we were entertained at a Social Service afternoon given in honor of the Association by our former Grand President, Mrs. Jean Nelson Penfield.

A most interesting program had been arranged by Mrs. Penfield. Dr. Josiah Strong, President of the Institute for Social Service, gave a short history of the institute and its work, and Dr. Wm. H. Tolman followed with a more detailed account of the work. Miss Emma Williams, of Brooklyn, sang several charming selections to the delight of the hundred or more guests. Mrs. Jessie Cassidy-Saunders, Ψ, spoke briefly of the service the fraternity renders, and Miss Susan Olmstead, X, spoke of the service of the teacher. Mrs. Lillian Moore Pardee talked entertainingly of "Comparative Legislature—the work of women."

Altogether it was an afternoon long to be remembered.

The officers of the Association for the year 1903-1904 are: President, Mrs. Jean Nelson-Penfield, I; Vice President, Miss Caroline Roemer, B T; Secretary, Mrs. Mary Morgan Brewer, Δ; Treasurer, Mrs. Minnie Royce Walker, I. Executive Committee, Mrs. Evelyn Wight Allan, B B; Mrs. Florence Corner Sellenings, B N; Miss Eleanor F. Osborne, B E.

On Saturday, February twenty-seventh, Mrs. Guy Morrison Walker and Mrs. William Warner Penfield gave a euchre for the benefit of the New York Alumnae Association, at the home of Mrs. Walker, 504 West 112th street, New York.

The afternoon proved a success socially, but as the tickets were only fifty cents and many were unable to attend, the financial returns did not equal the expectations of the hostesses. Mrs. Frances Brewer, of Delta, won the first prize, which was a beautiful Kappa hatpin designed to show the fleur-de-lis in dark and light blue and K K Γ in gold upon the flower. The second prize

went to Faith Davis, of Beta Tau, who is at home on a vacation on account of her health. Katharine Poole, of Beta Epsilon, secured the consolation prize.

The next regular business meeting of the Association will be held at Greenwich House, 26 Jones street. This is the Settlement house established by Mrs. Simkhovitch (Phi), who was head worker at the Friendly Aid Settlement in East 34th street, New York City, for a number of years. Besides the regular business of the day, Mrs. Simkhovitch will talk on Settlement work. The meetings are held on the last Saturday in each month, at three o'clock. All Kappas who are in New York will find a cordial welcome. Addresses of Kappas moving to New York, who wish to be identified with the Alumnae Association, should be sent to Mrs. Frances Brewer, 4 Albion Place, Port Richmond, Staten Island, New York.

MARY MORGAN BREWER, Δ, *Sec'y.*



Syracuse Alumnae Association.

Greetings to all Kappa sisters from Syracuse alumnae!

What have Beta Tau alumnae been doing this winter? We only wish that you might drop into one of our meetings. Such loyalty as "our girls" do show. We seldom have less than fourteen at a meeting, and often about twenty or more. (Beta Tau has but few "city girls.")

This winter we have been together every three weeks. At a few meetings we have been enjoying a "Trip in England." Several of the "girls" have been abroad during the last three or four years, and one or two are going again this summer. So we have been entertained by them recounting their former trips, not only by views which they "snapped," but also by very vivid descriptions of the many places they visited. Then, this year we have been more interested in the doings of the fraternity. Not that we have not been in close touch with the chapter, but that we desire to know more of the fraternity rulings, etc. Hence one of our members gave a review of the most important items we should know and remember. Very shortly we are to have an examination regarding all fraternity and chapter matters.

Several times we have had very novel forms of entertainment at our meetings, some of the alumnae being very original. Xmas.

time we were kept "guessing" when we were told to "Please send a gift to my house the day before the meeting." "Do not let the cost of the gift be over twenty-five cents." Such a hunt and guessing of enigmatical rhymes as we did have, and each one went home with an Xmas gift, and also voting the gathering a most enjoyable affair.

I wonder if all Alumnae Associations are visited by members, who were formerly in their college chapter, who live at a great distance. At the beginning of the winter we made out an itinerary of the meetings. A list was given to each girl and our corresponding secretary (I doubt if there is another like her) sent a list to every Beta Tau Kappa within a hundred miles of Syracuse. In this way, if any of them are coming to or near Syracuse they plan their trip about the time for alumnae meeting. Hence we seldom have a gathering but we greet a sister who has not been with us in months, and once in a while it will be one who has not been with us in a year or more.

The last number of the KEY suggested a "baby party," and Syracuse alumnae is to have one within a month. It was a fine suggestion. We should become acquainted with the future Kappas and their brothers.

MARGARET BROWN.



Philadelphia Alumnae Association.

Chapters and number in each: Beta Alpha, 24; Beta Iota, 3; Beta Beta, 1; Eta, 1; Omega, 1; Psi, 1; Chi, 1.

The Philadelphia Alumnae Association is having an enjoyable and prosperous year. Our thirty-two members, representing seven chapters, are all interested in the welfare of Kappa, and usually our meetings are very well attended.

In December we gave a tea at Mrs. Moore's to Beta Alpha and Beta Iota and Kappa alumnae in Philadelphia. In spite of a heavy snowstorm and comparatively few guests, we had a very delightful afternoon.

On the eleventh of February we had our annual dinner. Twenty-five Kappas, representing seven chapters, were seated at the long table, which was prettily decorated with pink tulips and blue ribbons. Mary Pennington was toastmistress, and after welcoming us warmly she proposed that Mary Griffith give us a toast to the Grand Council. Her response was most eloquent on

this subject, as was quite fitting. Representatives of all the chapters present responded to toasts very cleverly, making an evening thoroughly enjoyable. Several girls, active in Beta Alpha and Beta Iota, were with us and delighted us with the accounts of their chapters.

In April we hold our annual elections, and we are all sorry our year is so nearly gone, for with its close we must accept Mary Griffith's resignation from the presidency of the Association; our Constitution limits the executive's time in office to one year. Our winter has been so very successful that we are loath to let our wise leader relinquish the management of our Association.

Greetings and best wishes to all Kappas.

HELEN M. P. BETTS, *Sec'y.*



Beta Iota Alumnae Association.

Three regular meetings of Beta Iota Alumnae Association have been held this year; one in June, one in October and another in January, have been most enjoyable. They are purely social after the ordinary business of the Association, and we are only sorry that it is not possible to have *all* our alumnae present, for to those who live near enough to attend they are such jolly informal times. As we can have but one large meeting, we all look forward to the annual banquet, and this year, on the twelfth of March, we hope to have an unusual number of "old" girls with us for the best reunion of all the year. The alumnae meeting is held just before the banquet, and we can there discuss all questions of interest in a most satisfactory manner. The week before, too, the freshmen are to be initiated, so we shall have, as well as the usual good time with the actives, the added pleasure of giving the newest members of Beta Iota the heartiest of welcomes.

ELIZABETH DINSMORE, '01, *Sec'y.*



Pittsburg Alumnae Association.

The Pittsburg Alumnae Association begins its career auspiciously. Organized on December 12, 1903, we are now able to report twenty-eight active members. Eight chapters are represented: Xi leads with fifteen members, Beta Gamma follows with five, Gamma Rho has three, Iota, Eta, Omega, Beta Tau and Beta Lambda each having one representative.

We have made Hotel Lincoln our headquarters in Pittsburg, and the cozy, attractive room adds much to the interest of the meetings. A Kappa luncheon was held recently, and plans are being matured for an elaborate banquet, to which the "Kappa brothers" will be invited. While we hope to make the Association very helpful and interesting socially, we shall lay the greater stress upon our literary work. A course of reading and study will be provided which will give us a place among the best literary clubs in the city.

A Kappa Alumnae Association in any locality is a center of inspiration, but to us in Pittsburg—busy, smoky, materialistic Pittsburg, where the "Titans of industry wage the eternal war of Toil"—to us these Kappa reunions are inspiring beyond expression. For a little while we forget our responsibilities in pleasant memories of the "good old times."

MRS. MCILYAR H. LICHLITER.



Columbus Alumnae Association.

Chapters and number in each: Beta Nu, 30; Beta Gamma, 4; Sigma, 1.

The work and play of the Columbus Alumnae Association has been much the same this year as last; the same plan being followed, that of monthly meetings, with business and social alternating. The social meetings take the form of a spread. And what could be nicer than a good old Kappa spread? On these occasions the active Beta Nu chapter is always our guest, and thus we are kept in constant contact with the work of the chapter and are well acquainted with the girls personally. Our first meeting took the form of a banquet, the initiation banquet of Beta Nu, at which we had as our guest of honor our editor, Lucy Allen Smart. In December the home of our president, Mrs. Raymund, was opened to us for the regulation spread. At this meeting we tried combining business with pleasure and held a short business meeting before the spread. The result was so satisfactory that we decided to adopt the plan permanently. This month we are to have another meeting, and we wish that all alumnae might have as pleasant and profitable gatherings as we.

HENRIETTA KAUFFMAN, *Sec'y.*

Cleveland Alumnae Association.

The year that has passed has been for the Cleveland Alumnae Association a very pleasant but a very uneventful one. There is little to tell of our meetings that has not been told in the letters of previous years. We have continued the plans outlined there; meetings are held the first Tuesday of every month excepting the three summer months, a luncheon is served first and the business meeting follows. This luncheon seems to solve the problem of bringing the members together on time, something not easy of accomplishment in a city where they are so scattered. At the social meeting following, all of us who are able spend the rest of the afternoon. This social part, the fostering of the Kappa spirit of sisterhood, is the chief aim of our meetings, and certainly this common bond among those whose other interests are so diverse brings much pleasure to us.

Our membership list numbers twenty-three, and there is a pretty regular attendance of fifteen. Quite often we have the pleasure of a visit from active or alumnae Kappas of Wooster, Akron or other towns of northern Ohio. With questions interesting the fraternity at large we are kept very actively in touch by our Grand Registrar and our Editor, whom we number among the members of our Association.

In one way we are looking out for the future. Many of our meetings are attended by infant "Kappas-to-be," and we are all of us having a "chance to figure in the rearing of the second generation." If we may judge by their present behavior, you will all be proud of them some day.

We hope to send, as our delegate to the convention, our president, Mrs. N. O. Paulin.

EDITH M. TWISS, *Cor. Sec'y.*

**Akron Alumnae Association.**

Chapters and number in each: Lambda, 23; Beta Gamma, 2.

The Akron Alumnae Association holds four meetings a year. The first one of the college year was held in September, at the home of Miss Herndon. It was purely a business meeting—officers were elected, reports were heard, new committees appointed. Plans for the ensuing year are outlined at this meeting and various fraternity questions are discussed—one in which a great deal

of interest is manifested, is whether an Alumnae Association shall have a vote at the National Convention. The other three meetings take the form of various kinds of parties. A card party was given at Mrs. Acres' home, to which the Lambda girls and the "rushees" were invited. It was a most delightful and successful party, giving some of the older alumnae an opportunity of making new friendships and renewing old ones. Our next meeting will be at a thimble and chafing-dish party at the home of Miss Parshall, February twenty-seventh.

On the afternoon of February twentieth our Association was invited to attend Lambda's initiation of four new girls. Mrs. Hardy, of the Cleveland Association, was one of the guests. After the initiation service, dinner was served by several of the Lambda girls. Dainty favors, in the form of golden keys tied with the dark and light blue, were given to all the guests. The relation between the active and alumnae chapter is very cordial—we feel each is mutually benefited by contact, one with the other.



Wooster Alumnae Association.

Chapters and number in each: Beta Gamma, 15; Alpha, 1.

During the past year we have had eleven regular and two called meetings. We meet at the different homes on the evening of the first Thursday of each month. The first part of the evening is devoted to business, after which we have a spread and social time.

Although no events of great importance have transpired since our last contribution to the KEY, our fraternity program has nevertheless been filled with minor, but pleasant circumstances. First of these may be mentioned the completion of the furnishing of the active chapter room in Kauke Hall. The quiet air of elegance which it now presents is a result of the numerous gifts received from the alumnae, the active chapter and friends.

Of concern to Beta Gamma readers was the election, at our October meeting, of the following officers for the ensuing alumnae year: President, Miss Frances A. Glenn; Vice President, Miss Elizabeth Johnson; Secretary and Treasurer, Miss Cora F. Hoelzel. At our January meeting were elected, Mrs. Vinnie Harper Annat, delegate, Mrs. Lizzie Wallace Taggart and Mrs. Erma Rowe Taylor, alternates, to Kappa Kappa Gamma's next annual convention.

Miss Gertrude Vollrath, '00, in a recent visit to Vassar College, reports having met not only charming Kappa representatives from Minnesota, Wisconsin and Kansas State Universities, but also Miss Mabel Chilberg, one of the Seattle girls who, for the last five years, have so earnestly striven to become identified with the Circle of the Golden Key.

Last, but not least, may be chronicled the "surprise spread" tendered the active girls by the Alumnae Association, on the evening of the twentieth of February.

To sister alumnae, the Wooster Association sends springtime greetings and best wishes to each organization for as complete a preservation of the Kappa bonds as Wooster appreciates in her little coterie of organized ex-Kappa students.

CORA F. HOELZEL, *Sec'y.*



Adrian Alumnae Association.

The Adrian Alumnae Association is still too young to have much to report, either of plans made or work accomplished. Under the inspiration of our Grand Treasurer, Miss Sinclair, we organized on October fifth, 1903. We held our first meeting at the home of the president, Miss Florence Reynolds, November eighth. This consisted of a short business session, followed by a very pleasant social evening.

February twenty-seventh, the alumnae, together with the active chapter, were entertained at the home of Miss Jennie Gilkey. Questions of general fraternity interest were discussed, and plans made for representation at convention. Miss Reynolds was chosen delegate, with Miss Gilkey and Miss Owens as substitutes. The evening was spent very pleasantly in becoming better acquainted with the active girls and in recalling our own college days. The next regular meeting will be held in May.

The aim of our Association is to aid and support our active chapter in every way within our power, and to keep ourselves in touch with the spirit and work of the fraternity at large. We are all busy women, with many interests and duties claiming our time and thought; but we would not lose sight of the great organization of which we are a part.

ANNA M. OWENS, *Sec'y.*

Bloomington (Ind.) Alumnae Association.

Chapters and number in each : Delta, 29 ; Iota, 2.

With each meeting of our Alumnae Association the interest of the members seems to increase. Our last meeting was especially good, and much of the old-time enthusiasm and loyalty was revived. Although the weeks and months have lengthened into years since our college days, the spirit of a once greater activity was manifest. It is our constant aim to derive much benefit and pleasure from the Association and to be of some help to the active chapter.

The autumn reception given for the active chapter and the new girls was held at the home of Mrs. Prof. Hoffman, and was greatly enjoyed by all present.

The Program Committee appointed last fall arranged a splendid program, which is being successfully carried out. The subject of active and non-active membership has been thoroughly discussed and it was the consensus of opinion that where the Alumnae Associations exist the married alumna should belong to the latter rather than to the active chapter. Another subject considered was the chapter house property. It was decided that three be appointed from the alumnae and two from the active chapter, consisting of the treasurer and business manager, who shall constitute a Board of Managers to care for and take charge of the property belonging to the chapter.

Our delegates to the national convention are Mrs. N. W. Hill, Mrs. J. K. Beck, first alternate ; Mrs. Sanford Teter, second alternate, any one of whom would represent us most ably. We have joined the Loyal Council of Women, of Bloomington, and have three representatives in this body.

An honor unusual but most fitting has come to one of our number, Mrs. J. K. Beck, who is one of twelve women in the United States to be invited to attend and take part in the program of the International Conference of Women, in Berlin, next June. This organization is composed of twenty different nationalities and is world-wide in its scope.

We have placed twenty copies of *Kappa's Record* in the hands of our members, and all are delighted with it. It is a splendid book, very compact, and contains just what we want to know. Every Kappa should have one.

Indianapolis Alumnae Association.

Chapters and number in each : Delta, 7 ; Mu, 14 ; Iota, 6 ; Nu, 3 (inactive).

The Indianapolis Alumnae Association of Kappa Kappa Gamma has passed through its first year's work under the rules of formal organization. The present members of this club have been meeting with each other for perhaps the last six years, but not until the visit of Miss Sinclair, in April, 1903, were we impressed with the idea of organizing under the regulations of the fraternity at large. Once a Kappa, always a Kappa, seemed before this time to be a bond sufficiently strong. Any resident Kappa of Indianapolis is eligible to membership in the organization upon payment of the yearly dues. Our present enrollment contains the names of thirty-one women, representing three active chapters and one inactive chapter of the State. The meetings this year have been a source of inspiration, profit and pleasure.

The program provides for nine meetings during the year—three literary ones and two to be devoted to fraternity study. These have been and are to be pleasantly interrupted by four others of a merely social nature. The last one, February 6, was a valentine party given at the home of Mrs. D. T. Praigg.

A party planned for Christmas was turned into a memorial gathering, owing to the death of Mrs. R. F. Kautz, who had been to the club not only a president, but a most devoted, industrious and inspiring member.

Miss Edna Wallace has been unanimously chosen delegate to the August convention, with Mrs. Ellis G. Hunter as alternate. It is the sincere wish of the club that we be well represented at the convention, not only in our delegates, but in numbers, that the inspiration gained there may be strongly felt in our next year's work. We trust that it may help us to live the Kappa symphony so happily said by Beta Eta in the October KEY.

**Bloomington (Ill.) Alumnae Association.**

Chapters and number in each : Epsilon, 23 ; Iota, 1 ; Xi, 1 ; Eta, 1.

Our Kappa Club, more recently known as the Bloomington (Illinois) Alumnae Association, is in the midst of its eighth year of club work, and from the interest manifested we feel that it has been one of our most successful years. The Association numbers

twenty-six this year—twenty-three from Epsilon chapter, Mrs. Wilbert C. Ferguson (Mary Godman) from Xi chapter, Kate Downing from Iota, who is our president, and Mrs. Robert Cowles (Leila Stephens) from Eta chapter.

We meet every two weeks for a literary program, which is always followed by a good time socially. Our program for 1903-1904 has been a "Tour Through the United States and Her Possessions," and we have found it most interesting.

The active chapter always expect all the alumnae at their invitations and very few of us fail to be with them. Last week we attended the second initiation this year and helped to welcome three more loyal Kappas.

In January, at the home of Mrs. Wilbert Ferguson, the Alumnae Association gave a tea in honor of Epsilon chapter, and are planning another in March. On this occasion, and also at an informal which the active chapter and the alumnae united in giving, we were fortunate in having for our guest of honor Miss Elizabeth Morrison, an alumna of the chapter. We would gladly welcome more guests from other chapters, and send a very cordial greeting to all.

ETHEL LOUISE TRYNER.



Chicago Alumnae Association.

Chapters and number in each: Psi, 3; Beta Nu, 3; Chi, 3; Beta Tau, 1; Upsilon, 7; Sigma, 4; Beta Gamma, 1; Iota, 3; Phi, 1; Kappa, 4; Epsilon, 2; Eta, 2; Beta Lambda, 2.

Chicago Alumnae Association holds nine meetings each year. These take the form of luncheons at the Marshall Field Tea Room the fourth Saturday of each month, June, July and August being excepted. We have a long table bounded on all sides by high screens, so that we are entirely shut off from the barbarian world. These lunches are usually from the card—*Dutch treat*. Our average attendance is from fifteen to twenty. Occasionally a Kappa—I can't say lion, so must say lioness—strolls in and is eagerly given place of honor. We want every Kappa to remember our alumnae lunches and come lunch with us, if the fourth Saturday of any month finds you in the Windy City.

Madison Alumnae Association.

Chapters and number in each : Eta, 18; Psi, 1.

One meeting on February 24, 1903, for the election of officers and the transaction of other business, and one in June to arrange for commencement week and annual banquet in October.

On the 14th of December, Helen Haskell Warriner, '00, died of appendicitis, at Dunedin, Florida.

The chapter has lately enjoyed a visit from Miss Elizabeth Meyer, '76, one of the charter members.

Mrs. Mary Sarles Clark, '88, was a guest at the breakfast given by the active chapter on the 13th of February, the morning after the junior promenade.

Clara Fraelich, '03, has been spending a few days with Kappa friends in Madison.

Bess Morrison, '03, is visiting her Kappa sisters at the chapter house.

Since the holidays George Challoner, '03, has been teaching at Grafton Hall, Fond du Lac.

On the 10th of March, Jennie Ogilvie, '00, and Mr. Richard Gamwell are to be married. Grace Challoner, '00, and Clara Fraelich, '03, are expected for the wedding.

**Iowa Alumnae Association.**

Chapters and number in each : Beta Zeta, 24; Chi, 1; Beta Lambda, 1.

The Iowa Alumnae Association was established at Iowa City, Iowa, in November, 1903, with a membership of twenty-six. Since then we have had only two meetings which have been mostly social, devoting only the necessary time for business. We meet every two months on the first Wednesday evening of the month. The meetings are held at the different homes of our members, as most of them are resident alumnae. We are in very close touch with the active chapter, as all but two are alumnae of Beta Zeta, and many very recent graduates.

The girls of the active chapter are very thoughtful, they include us in their social functions and always invite us to initiations. We, in turn, keep our deep interest in them and endeavor to aid them both financially and otherwise. We send greetings and the very best of wishes to all Kappas.

Minnesota Alumnae Association.

Chapters and number in each : Chi, 90 ; Sigma, 4 ; Eta, 2 ; Beta Beta, 1 ; Beta Zeta, 1 ; Upsilon, 1 ; Psi, 1.

During the year nineteen hundred three, the Minnesota Alumnae Association held five regular meetings and one special meeting, gave two receptions and assisted the active chapters in a third. At each regular meeting the association is entertained by one of the alumnae, and after the business meeting, refreshments are served and the social feature prevails.

The first meeting was held January 17, with Mrs. Teyon. New officers were elected and the treasurer reported a balance of six dollars and ten cents in the treasury. On the nineteenth of this month a delightful reception was given for Miss Catherine Evarts at the home of Miss Merrill. Miss Evarts is an alumna of Chi, who has won distinction in the dramatic world.

At the second meeting, March 21, several important matters were discussed and after adjournment one of the members entertained us with songs. Miss Austin, of Boston, and Miss Farrell, of Fort Dodge, were guests at this meeting. April 23, the annual banquet was given, being the twenty-third anniversary of the chapter. It was largely attended by the alumnae and proved one of the most enjoyable ever held. After the menu, toasts were responded to and in the last, "Future Plans" and "Our Castles in Spain," the possibility of a chapter house was presented.

May 16, a third meeting was held with the Misses Higbee. Various committees reported on plans for a chapter house and the committee was authorized to continue getting subscriptions until a sufficient sum be pledged to build the house. June 5, a special meeting was held in the interest of the chapter house. August 25, the Alumnae Association assisted the active chapter in giving a reception to K A @ who were then assembled in convention. About one hundred members of K A @ attended and it was pronounced by all a success.

The fourth regular meeting was held September 19. Various matters of business were disposed of and arrangements made for the annual alumnae reception on October 13, which was given at the home of Mrs. Frank Washburn and was largely attended by active and alumnae Kappas.

The last meeting of the year, November 21, was held at the home of Dr. Ulrich. Three new members were welcomed to the Association: Mrs. Williams from Northwestern, and Mrs. Haggard and Miss Broady from Lincoln.

(MRS. H. L.) MARY F. WILKINS, *Corresponding Sec'y.*



Lincoln Alumnae Association.

Chapters and number in each: Epsilon, 1; Beta Zeta, 1; Sigma, 30.

The Lincoln Alumnae Association has held very enjoyable monthly meetings during the autumn and winter. The active girls often meet with us either at the home of some alumnae, or at the chapter house. The acquaintance of older and younger members thus encouraged, has been a great pleasure, at least from the alumnae side. At Christmas, the active girls entertained the alumnae at a Christmas tree at the chapter house. A large number were present and spent a most happy evening.

In February, about forty girls met with Miss Stella Kirker and discussed various matters bearing on fraternity life in our university. All the meetings are well attended, and while some are purely social, yet we find that fraternity life moves more smoothly if we keep in close touch with its business as well as its social side. The convention is an interesting topic and we hope that a large number of our members can attend.

CORA FISHER WARNER.



Denver Alumnae Association.

Chapters and number in each: Epsilon, 4; Sigma, 2; Beta Mu, 2; Beta Tau, 1; Beta Zeta, 1; Theta, 1; Beta Beta, 1; Mu, 1; Kappa, 1; Omega, 1.

A cordial Kappa greeting to our sister chapters!

The meetings, held every month, of the Denver Alumnae have a literary as well as a social interest for us. Each term has opened with a calendar somewhat more ambitious than the one preceding. Last year, Japan was read about, written about, and discussed in many interesting phases, and this year we have adhered to the following poster, the second half of which will be made known at the next meeting:

October 10th.—MRS. ALBERT SECHRIST, 2361 Vine Street.

1. "The Present Political and Social Life of Russia,"
Mrs. Marquis Hornbeck.
2. "Life of Nicholas Gogol," Mrs. E. C. Healey.
3. "Review of 'Dead Souls,'" Miss Gertrude Wood.

November 14th.—MISS BLANCH E. EMMONS, 202 E. Ellsworth Street.

1. "Russian Art, Architecture, and Painting," . . . Miss Emmons.
2. "Life of Ivan Turgeneff," Mrs. Albert Sechrist.
3. "Review of 'A Nest of Gentle People,'" . . . Miss Charlotte Powell.

December 12th.—MRS. L. C. GREENLEE, 1051 Marion Street.

1. "The Police System of Russia," Miss June Willits.
2. "Review of 'Virgin Soil,'" Miss Alice Grace.
3. "Christmas in Russia," Mrs. Henry Burnham.

January 16th.—MISS MONTA J. BOYER, 1648 Washington Street.

1. "Life of Count Tolstoi," Kathyryne Todd.
2. "Ivan Ilech," Mrs. L. C. Greenlee.

February 13th.—MISS CHARLOTTE POWELL, 1730 Sherman Street.

1. "Tolstoi as a Dramatist," Miss Boyer.
2. "Review of 'The Resurrection,'" Miss Emmons.

But we do not spend all of our time preparing and reading papers; there are so many items of business and pleasure to be discussed that Kappa afternoons always prove too short. Owing to a pleasant precedent established two years ago, the gentlemen whose interest evidently has been aroused by reports given them by our matrons, and a few bachelors too, were with us at the annual banquet given on the evening of May 30th, at the beautiful new home of Mrs. E. C. Healy. Mrs. Hornbeck's happy sallies as toastmistress brought forth as happy responses.

The only mar of the luncheon given at the home of Miss Boyer February 20th, at which Kappa husbands were also in evidence, was the absence of the guest of honor, Mrs. Lucy Allen Smart, who did not arrive in the city until later. We were all happy to meet our editor when she did arrive at Mrs. Healy's and and sincerely regretted she had to leave so soon.

Indeed we are not irreclaimably literary or too frivolously social; but try to blend the activities hallowed by college and Kappa memories, with the life we find after the diploma has been laid carefully away.

JUNE WILLITS, *Corresponding Secretary.*

Pi Alumnae Association.

Pi Alumnae Association was founded six years ago by the graduates and associate members of Pi Chapter, primarily for the purpose of continuing the strong and warm friendship, formed between the girls during the four years of college life, and secondly as a link to bind them more closely to the active chapter. The alumnae have always taken a keen interest in the welfare and progress of the chapter, although its members are scattered all over the globe. They are only too delighted to participate in the pleasures of the reunions which occur regularly four times a year; other meetings are called from time to time by order of the President. Last October a farewell reception was given by the Association in the Active Chapter House to one of its charter members, Miss Florence Mason, who has since left us to become the bride of Mr. Frederick Palmer, Chief Civil Engineer of the British government at Calcutta. During the holidays the annual banquet was held at the St. Dunstan in San Francisco, where we all had a most enjoyable time. A prettily decorated Christmas tree adorned the table and each member was presented with some toy nonsense accompanied by appropriate couplets, which were read aloud amidst a great deal of laughter. One or two initiations are held yearly, according to the number of girls graduated from the active chapter.

Pi Alumnae Association hopes some day to build a home for the active chapter, but in the interim it has established a scholarship, which is enjoyed by one of the girls in the active chapter. This year has decided to send a delegate from the association to convention, so that it will be more in touch with general matters and questions of the fraternity under discussion.

Pi Alumnae Association sends best wishes for a prosperous year to K K Γ.

**Washington State Alumnae Association.**

For the purpose of effecting an organization known as the Washington State Alumnae Association, a few loyal Kappas met at the home of Mrs. H. R. Clise, Seattle, Washington, on the afternoon of February 10th. Following the meeting, Mrs. Clise gave an informal reception in honor of Mrs. Lucy Allen Smart,

who was in the city; and we had as our guests, the active members of the local sorority, Alpha Kappa Gamma at the University of Washington.

Mrs. Nellie Wade Hurlbut, of Delta, was elected president; Ada Starkweather, Lambda, secretary; Pearl Taylor, Beta Delta, treasurer. Meetings will be held the last Saturday afternoon of each month. The object of the Association is to enable us who are so far separated from our chapters to keep in touch with the workings and life of the fraternity. We also are ready to lend any assistance to the local sorority, Alpha Kappa Gamma at the University of Washington in obtaining a charter from Kappa Kappa Gamma. We know the young women personally and consider them worthy of wearing the "Key."

As yet our organization is small, but soon we expect Kappas residing in the neighboring cities to join with us. Chapters having alumnae located in the state will do us a favor by kindly sending the secretary the names and addresses of such.

The Kappas in the far north-west send kindest greetings and best wishes to all their sister Kappas.

ADA STARKWEATHER, *Secretary*.



Boston Alumnae Association.

Chapters and No. in each: Phi, 40; Eta, 1; Chi, 1.

October meeting: Business was transacted, officers elected, etc.

November meeting: Miss Ingalls spoke on her summer abroad.

December meeting: Dr. Austin, of Chi, spoke of "Bacteria in Their Relation to Hygiene."

January meeting: Mrs. William Rutan was the speaker of the afternoon.

At each meeting, after the speaker has concluded her remarks, there has followed a social hour, light refreshments being served.

Boston Alumnae Association sends no delegate to convention.

EDITH R. BLANCHARD, *Cor. Sec'y*.

Alumna Notes.

One of the important questions before the national convention at its next meeting is "Shall the Alumnae have the Right to Vote in the Convention?" The answer to this question almost wholly depends upon the answer to another, namely: "Shall the national convention discuss and determine policies affecting the local alumna chapters as well as of the active chapters?" If this is the case it would be wholly unfair to restrict the votes to active chapters and thereby allow them to determine the affairs of the Alumna chapters. On the other hand, if the national convention is to determine only matters pertaining to the active chapters, there seems to be but one argument of any consequence in favor of allowing the Alumnae to vote, namely: that it would aid in maintaining an interest in the national convention.

As the condition now stands, the convention will pass upon matters pertaining to both classes. The Alumnae certainly should have an equal voice in things that effect them equally with the active chapters, and full and exclusive control of affairs pertaining only to them.

The evident solution is to have also an Alumnae National Convention to be held at the same place and time. Each group would be glad for the help of the other but each act upon its own affairs.

SARA RETTGER MOENKHAUS, '99, *Delta*.



Twenty-six Alumnae Associations! Seven hundred and ninety members with more being daily added! Kappas who have been trained to wield the gavel in dear old fraternity meetings, and kept up the lessons by years of club work.

If this formidable army marching under the blue and blue should stray into the convention and be given a vote, what would result? Soon it would govern the active chapter and the whole fraternity idea would gradually be changed.

And Alumnae! How easy it would be for us to again be in fascinating Kappa's bonds, neglecting, only a wee bit perhaps, some sterner but not less pleasant duty. Let us be content to assist the active girls with all our strength, not forgetting the work of living up to Kappa's highest ideals of womanhood.

NELLIE SHOWERS TETER, '93, *Delta*.

CHAPTER LETTERS.

ALPHA PROVINCE.

PHI—UNIVERSITY OF BOSTON.

Boston University has at last chosen its new President, Dean Huntington, who has been acting in that capacity since Dr. Warren resigned. Dr. Huntington ably fulfilled the duties of President in the interval between his own election and Dr. Warren's resignation, and there can be no doubt but that the college will continue to be prosperous under his administration.

Now that exams are over and the new term has begun, we have once more settled down to the old routine. All the girls are back with us except one, who was unable to resume her work on account of ill health.

Phi has had several pleasant receptions during the last semester and anticipates several more for the present one. We entertained the alumnae the nineteenth of February, and considered ourselves extremely fortunate in having with us at that time Miss Funke, from Sigma, and Miss Darronga, from Omega.

One engagement has been announced since our last letter, that of Mary Piper to Mr. Harry Wilkins, Dartmouth, 1905.

Phi wishes all her sisters a prosperous new term.

ETHEL M. RICH.



BETA EPSILON—BARNARD COLLEGE.

Beta Epsilon is settling down after the midyear examinations to the long pull to the end of the college year. This year for the first time at Barnard we can look forward to an Easter vacation, which, though only five days in length, will furnish a welcome breathing-spell.

Beta Epsilon has two new members to introduce, Frances Hope Purdou, 1905, and Martha Stapler, 1905. The latter came to Barnard from Bryn Mawr, and may return there to graduate next year, but it is also part of her plan to do graduate work at Columbia, so that we hope to have her in our active chapter for some time to come.

Nathalie Henderson, a special, who has been with us for a year and a half, has left college, and so has dropped out of the active chapter.

The illness of Caroline Lexow, one of the members of our apartment family, who was taken with typhoid fever just before the Christmas vacation, necessitated our seeking other quarters for our meetings, but, thanks to Kappa hospitality, there has been no interruption of our activity, and, as Miss Lexow's recovery was remarkably rapid, we have already been back in our old quarters for several weeks. One of our number, however, Helen Walker, of Beta Iota, was obliged to leave the apartment at Christmas time, and is greatly missed by the rest.

Mrs. Guy Walker called at the apartment a short time ago. Another Kappa, Cleo Wheeler, from Chi, has been with us several times lately. It seems as if New York would naturally be visited throughout the year by many Kappa alumnae, and we hope that all who come here realize that Beta Epsilon is ready with a welcome for any who will seek us out.



PSI—CORNELL UNIVERSITY.

Since Psi's last letter, nothing very exciting has happened to us here at Cornell. Examinations are safely over, and all our interests are at present centered on basket-ball. The inter-class games come off in less than a month.

During junior week we were glad to meet two Kappas from distant chapters, Miss Follett, from Beta Nu, and Miss Bradley, from Upsilon. It always seems nice to meet and talk with our sisters from other chapters and find out personally about them.

In December we had our initiation at the home of Mora Blatch and the banquet was held at Mary Hall's. We were able to initiate only two of our pledges, Amy Rhodes and Alice Dubreuil, as Martha Dodson was very ill at the time. Since then she has been at home convalescing, and we hope to have her with us soon.

We were very fortunate in having Miss Ruth Paxson with us for our initiation. She spent a week here at Cornell, and in that short time quite won the hearts of all the girls. One day she talked to us at an inter-fraternity meeting, and gave us much helpful advice. Psi is always glad to meet any Kappa who may be in Ithaca at any time.

M. L. S.

BETA TAU—SYRACUSE UNIVERSITY.

To all in Kappa Kappa Gamma, Beta Tau sends greetings.

The rushing season was over with the beginning of the second semester, and we now can add to our number Marion Ballou, Kathleen Bagwell, Margery Gardner and Bertha Jewell, making our freshman delegation twelve in all.

Since examinations were over we have enjoyed senior week and several parties. A valentine party was given by our new members to the freshman men of the different fraternities, and was a great success. The house was prettily decorated in red and green. A large heart of electric lights, covered with red, was a unique and attractive feature of the decorations.

The members of our Alumnae Association take a great interest in the chapter, and help us not only by giving presents for our chapter house, but by their frequent presence at our chapter meetings.

CLARA E. MACFARLANE.



BETA ALPHA—UNIVERSITY OF PENNSYLVANIA.

Beta Alpha had planned to initiate, on December 18, 1903, the two new girls, Anna Heick and Alice McKelden, whom we introduced to Kappa Kappa Gamma through the last KEY, but because of the illness of one of them, we were obliged to postpone the initiation until after the Christmas holidays. On January 15 the initiation was held at Frankford, at the home of one of our members. Several of our alumnae were present and we, of course, had a very pleasant time.

We have been so busy during midyear that we have had little time for fun, but we have had delightful meetings, and several visitors. Miss Griffith is always welcome, and Miss Moore, from Chi, and Miss Sherwood, of Beta Beta, two very busy students of the Philadelphia Women's Medical College, may be equally sure of a welcome when they again find time to visit us.

The alumnae banquet, to which the active Beta Alphas and Beta Iotas were invited, was held February 11. Kappas from several chapters, as well as our Grand Secretary, responded to the toasts proposed by Dr. Mary Pennington. Edna Bramble responded for Beta Alpha. We not only spent a very enjoyable evening, but were inspired to greater work and greater loyalty to Kappa by the words of one of our charter members, Mrs. Kathleen Carter Moore.

IDA MAY SOLLY.

BETA IOTA—SWARTHMORE COLLEGE.

Now that midwinters are a thing of the past, Beta Iota seems to be feeling much better and to have taken a new interest in life. In looking back over the past few months we remember with greatest pleasure our Christmas party at the home of Mabel Cheyney. We all enjoyed the tree very much and the small tea later, presided over by Fanny Cheyney, one of our alumnae, was especially delightful to us all.

On the eleventh of February five Beta Iotas attended the annual banquet of the Philadelphia Alumnae Association. It was our initial plunge, but so pleasant did it prove that we intend to repeat it often in the future. Miss Pennington acted as toast-mistress.

About the beginning of February, on the same day on which the Baltimore fire was carrying ruin to so many homes, Swarthmore also suffered from a fire. The Science Building, which stands at some distance from the main college hall, was badly damaged. But so promptly and efficiently were efforts made to extinguish it, that no more loss was inflicted than was covered by the insurance. The Baltimore fire also seriously affected Swarthmore, for the homes of many Swarthmoreans were there.

As the first of March this year fell upon Tuesday, it was decided by the unanimous consent of Kappa Alpha Theta, Pi Beta Phi and Kappa Kappa Gamma to advance pledge day to Friday, February twenty-sixth. We should like to introduce to you Adelaide Hallett, Louise Horner, Ella Lewis, Emma J. Wilson and Maude Kemmerer.

ELIZABETH HALL.



GAMMA RHO—ALLEGHENY COLLEGE.

Since our last letter, Gamma Rho's active chapter roll has been doubled by the initiation of seven splendid, enthusiastic girls, who have already shown themselves to be typical Kappas. They are Winifred Terry, Adelaid Ottoway, Lorena Palm, Ethel Fowler, Mabel West, Carrie Dice and Harriet Silver. Kappadom, as well as Gamma Rho, is to be congratulated upon having added to its lists such loyal wearers of the key.

It is our custom to celebrate February the thirteenth, our chapter birthday, by a spread or in some other appropriate way.

This year the Kappa Babies were appointed as a committee to arrange for the birthday observance, and we were indeed royally entertained. They entered into the spirit of the occasion with great enthusiasm. Each member was given a light and dark blue heart upon which was written some "stunt" to be performed by her. Each did her part well and received due applause from the rest. We were then led to the dining room, where a large birthday cake, illumined with sixteen candles, arrested our gaze. Then we were served with a dainty spread. All united in praising and expressing their gratitude to the new girls for their successful efforts.

On Washington's Birthday our annual college dinner took place in the gymnasium. This is the greatest college event of the year, and is enjoyed alike by alumni, students and professors. This year, as usual, college and class spirit was manifested by many songs and yells, and the room fairly rang with good cheer. An interesting toast list was presented after the banquet. Gamma Rho was represented most creditably by Katharine Dewey, '05, who responded to the toast, "Vir Alleghiensis."

Allegheny has been winning great laurels in basket-ball this term. She has defeated, in addition to many small colleges, Bucknell University, State College of Pennsylvania, Syracuse University and the Buffalo Germans, by large scores. The Buffalo Germans are professional players and won the championship of the world at the Pan-American Exposition.

Gamma Rho sends her best greetings to all sisters in Kappadom.

HELEN MCCLINTOCK.



BETA PROVINCE.

LAMBDA—BUCHTEL COLLEGE.

Greetings and a glad springtide to all the chapters!

Lambda sends her love and loyalty from East to West with the knowledge of a like return. We have had a happy winter, though a quiet one, at Buchtel, and all our girls seem filled with renewed vigor at the first budding of the trees. And none are stronger among us than the four sweet women who have lately pledged themselves to Kappa, and who at last so proudly and worthily wear the key. We feel honored in being able to introduce to you Ruth Slabaugh, Julia Allen, Blanche Mallison and Blanche Olin,

as fully initiated into the precious rites of Kappa Kappa Gamma. Only three weeks ago we held the services in one of our resident girls' homes, with a dainty supper and jolly time afterward. Not among the least of the features of the evening were the favors—keys, cleverly cut from cardboard, gilded a deep gold, and tied with the shades of blue. But our freshmen are fully repaying all our pains, for they have already invited us to a party to be given all by themselves and we look forward to a most joyous evening.

The gymnasium girls are enthusiastically preparing for their annual exhibition. Our gymnasium work is good here—we have everything to make the girls' department first class. The young men are eagerly looking forward to the track-meet. Again, this year, the merchants of our city have kindly offered prizes for the different features of the day, and this, of course, adds interest. All are wondering will this spring win a place for his name upon the silver cup, of which we are so proud.

Our Literary Society is thriving—since the young men allowed the girls to join too. Until this year the society has been for the boys exclusively, but this winter they concluded to debate with the girls, and now each Wednesday night the arguments are hot and fast.

Again, Lambda sends her greeting to each and all of her sisters, wishing for them the most beautiful thing which she possesses—a quiet, happy sisterhood.

CLARA BROUSE.



BETA GAMMA—WOOSTER UNIVERSITY.

Greetings to all our Kappa sisters!

Since Beta Gamma's last letter, two more girls have joined her circle, and these she is most happy to introduce to you—Edith Reese and Anita Boyce, both of the class of '06.

Thus far the new year has brought us much joy and happiness. Beta Gamma entertained about sixty of her young friends at a valentine party February fifteenth, Miss Elizabeth Tawney acting as hostess. It was pronounced one of the most delightful and prettiest affairs of the term. The out-of-town guests were Miss Durstine, of Cleveland; Miss Felger, of Mansfield, and Miss Waddell, of Marion.

Beta Gamma's alumni chapter took her by surprise last Friday night, by appearing at "dear old Kappa Hall" and bringing an

elegant and elaborate spread, which we Kappas soon devoured. It was a most delightful surprise, and one of which Beta Gamma shall always have pleasant recollections.

Beta Gamma's wish for her Kappa sisters is that they may have just as much joy and happiness as she has experienced.

MARY MCKINLEY.



BETA NU—OHIO STATE UNIVERSITY.

It has been some time since our last letter and a great many things have happened in our little college world which will doubtless be of some interest to our sister chapters, especially if they are as interested in us as we are in them.

Ohio State suffered a great loss in the burning of the Chemistry Building, which was entirely destroyed on the night of February 19th. The loss to the State amounted to \$100,000, besides the individual losses to professors and students.

On the same evening the co-eds gave their prom in the armory. This has become an important event in the Ohio State girls' social calendar, not only because all the girls are invited, but it is only the girls who participate.

One February issue of the *Lantern*, our college paper, published weekly, was gotten out entirely by the co-eds, and it shows that they not only shine socially, but have no little business and intellectual ability.

During January we had Miss Paxson with us for a few days. No one who knows this grand Kappa can doubt the pleasure and benefit we derived from her visit, which was all too short.

Another effort of the co-eds which must not be forgotten is the Girls' Glee Club concert, which takes place in a few weeks. This is a new organization and has met with success so far, and it is to be hoped will make a success of this last effort.

At present we are looking forward to a meeting and spread with the alumnae, which is always a pleasure since the active chapter are guests. We are glad they come often, but wish they were more often.

The chapter has almost finished the plans for their annual formal party to be given the beginning of the spring term.

ETHYL WOODBURY.

BETA DELTA—UNIVERSITY OF MICHIGAN.

Calm after the storm! That is the prevailing condition here. Everything is subdued and quiet after the tedious week of examinations, and the beginning of a new semester, which is always a busy time, demands more or less strict attention and study.

The university has recently suffered a loss keenly felt not only by personal friends, but by the students as a whole, in the death on December 17 of Mrs. Angell, the wife of our president. She was devoted to the welfare and happiness of the faculties. Her activities in the life of this community and her wide influence over the students of the university, are recalled with grateful feeling.

Two student organizations, the *Deutscher Verein* and the *Cercle Francais*, established quite recently by the faculty of the respective departments, are creating widespread interest. The members of the *Deutscher Verein* are divided into groups which meet at the various members' homes twice each month. At these meetings a paper is usually read by one of the members, after which social entertainment, consisting of songs, recitations and games, is carried on in German. The *Cercle Francais* is much like the *Deutscher Verein*, only is more extensive in its formation. This club was established last year and now is composed of several groups with professors as their leaders. They have formed a French library, a course of lectures given throughout the year, and now are in the midst of the preparation of a French play to be given in the Opera House. The various groups meet once in two weeks, when an informal good time is had. French games, songs, recitations, etc., are prepared by the members.

With the end of examinations comes the junior hop, which is the social event of the college year, given by the men of the junior class, and which is anticipated with great excitement by the young ladies fortunate enough to have received an invitation. The "J" hop of this year took place on Friday, February 12, and was a great success.

Mary Probasco, of Epsilon chapter, who was affiliated with us while in college last year, spent several weeks with us. A dinner, an informal dance and a reception were given in her honor.

The indoor meets are the only events of interest at this time of the year in the line of athletics at the university. The freshmen

have some very promising men among their candidates and all are anxious to see what laurels they will win this season.

Beta Delta's interest in convention is increasing as the time grows near, and hopes that an unusually large number of Kappas will meet at that time at Columbia.

MARIE LINDSLEY.

❧

XI—ADRIAN COLLEGE.

Several delightful events have helped to make the two months since the Christmas vacation pass away only too quickly for the members of Xi.

Saturday afternoon, January 30th, a merry crowd of fraternity people, including the Kappas, enjoyed a delightful sled ride to the home of Mr. Sutton, uncle of one of the Tri-Delta girls, about eight miles from the college. The time passed very quickly in games and music. An elegant four-course dinner was served, after which we started homeward, all feeling that it had been a very delightful occasion.

Saturday night, February 6th, we initiated two girls into the mysteries of Kappa Kappa Gamma—Mabel Young, of Adrian, and Josephine Hall, of Richwood, Ohio. The ceremonies never seemed more impressive, and we were glad to have with us several of our alumnae. Each day our new sisters are becoming more loyal Kappas.

Saturday night, February 27th, Miss Florence Swift and Miss Jennie Gilkey entertained the Kappas—active and alumnae—at the home of the latter. An elegant luncheon was served and a pleasant evening was spent.

The oratorical contest preliminary to the State contest was held January 28th. Mary J. McCollum, '04, won first place, and will represent our college in the State contest, which is to be held at Adrian, Friday, March 4th.

We are very sorry to lose one of our number, Olive L. Neer, who was unable to return after the holidays.

Xi sends best wishes to all the chapters.

L. EDNA NEER.

KAPPA—HILLSDALE COLLEGE.

Since our last letter to the KEY, Kappa has had many enjoyable occasions. December fifth was our initiation, and we are proud to introduce our three new sisters, Bertha Van Aken, Bessie Camburn and Dorothy Hollister. Very often this winter our alumnae and outside friends have entertained us and given us a delightful time.

January ninth, the first meeting of the winter term, we held our annual informal "spread" for active, pledge and alumnae members. It proved, as usual, one of the pleasantest times of the year.

Rev. R. H. Westwood, a prominent evangelist from Cleveland, has been conducting very successful meetings here for the past three weeks.

Now is the time of contests. Several of the societies have held theirs and March fourth the Michigan inter-collegiate oratorical contest is held at Adrian. Some of our girls are planning to visit Xi at that time.

We are all busily planning and thinking about convention, hoping it will be one of greatest benefit to the fraternity.

ANNA SANDS.

✽

GAMMA PROVINCE.

DELTA—INDIANA STATE UNIVERSITY.

With the sun shining benignly down upon our world—the Kappa world, that is—what could be more conducive to Kappa happiness and prosperity, and what could be more to be desired, than all this glory and brightness?

Everything runs smoothly in this, our Kappa, world. It is true we have examinations like other people, but what do they amount to when not a Kappa receives a "smoke up" even in spite of the many groans and complaints that "four examinations in one day is more than anyone can bear!"

Yes, sisters in Kappa, we are happy. We have met with unlimited success this year and there is nothing to prevent our advancement until we have still further neared our fraternity ideal. When we have doubts and trials, we have our worthy alumnae to help us, and that they very kindly and willingly do. And, too, aside

from such matters as these, they aid us. They often visit our fraternity meetings, and nothing gives us more pleasure or more help than to see the faces of our "old Kappas" among those of our active members.

One of our finest girls, Hazel Simmons, was married February 10 to Mr. James Bowles, of Bloomington. Of course, before the wedding, Kappas and others gave many parties in her honor. These were surely enjoyable affairs. Ethel Simmons gave a tea at her beautiful home on College avenue, and Mrs. Adams most royally entertained the chapter and a few ladies at a six o'clock dinner on the evening of February 6.

Now it is our turn to entertain the Kappas and friends who have so often and so willingly entertained us. So we decided to give one big dinner on two evenings, so that we might the more return our indebtedness to our "Kappa men" and friends. These parties are progressive dinners, consisting of four courses each, and are given at the homes of our town girls and Kappa ladies. The first was given February 20, and was at the homes of Nell Reinhard, Mrs. Beryl Showers Holland, Mrs. Faris and Ruby Ballenbacher. The next is to be given February 27 at the homes of Sallie Duncan, Mrs. Hazel Simmons Bowles, Mrs. Nell Showers Teter and Miss Lena Triplett.

We have with us for the occasions Misses Mayme Trueblood, Elsie Naylor and Achsah Fargo, of Iota chapter; and also Ethel Lucas and Grace Norwood, who are not in college this term on account of illness. Both will be in next term, however, and we are looking forward to the time when they can be with us once again. For, although we have two new initiates of whom we are very proud—Georgia Hutton and Virginia Rodefer—yet we cannot replace our older girls and we want them all. We have twenty fine girls and they all unite in sending best wishes to the sister chapters.

LEONA TURNER.

IOTA—DE PAUW UNIVERSITY.

The second term is now drawing to a close, and the girls all feel that this is the term when they have worked hardest and accomplished most in the whole year.

With the opening of this term all our girls who were with us before the holidays were back, with the exception of Jessie Lawler and Katherine Burlingame.

Caroline Marshall, whom we were glad to welcome into Iota, came to us this year from Upsilon chapter.

Our only social function, since our last letter, was our annual valentine party, given at our chapter house. Less than a hundred guests were present, and the house was beautifully decorated in smilax, red carnations and red hearts. Among the out-of-town guests were a number of our recent alumnae—Maude Spinning, Sara Darby, Odessa Zeis, Ethelyn Halstead and Katherine Burlingame.

The girls have now forgotten all social events and are studying for the final examinations.

NONA BURKETT.



MU—BUTLER COLLEGE.

The most beautiful addition that Butler College has had for a long time is the Bona Thompson Library, dedicated before the holidays and now in use. It is a beautiful building, artistically furnished.

The students, however, do not spend all their time in the new library. The Kappa dance at the Propylaeum January 28, the State oratorical, in which Butler took third place, February 5th; the minstrel show, an annual college event, and various fraternity parties, all give us something to think about besides the more serious part of college life.

A successful rushing season, in which Lucile Carr and Annette Hampton were pledged, ended January 27th.

Mu.



ETA—UNIVERSITY OF WISCONSIN.

The year which had been such a happy one for the girls of Eta chapter had a most sorrowful ending. When we returned to Madison after the holidays it was without one of our freshmen, Rosamond Parish, who died in the terrible Chicago fire. It is with the greatest regret that we speak of Rosamond's death to our sister chapters, for we know the loyal Kappa that our fraternity has lost in her.

On February thirteenth the junior class gave their annual "prom." Although we did not attend we enjoyed having with us at that time Mrs. Clark, of Eau Claire, Wis., and two of our pledglings, Irma Hurdigen and Jene Bechtner, of Milwaukee.

We also had a visit from Alice Ensign, of Beta Lambda, which was most enjoyable. The morning after the "prom" we gave a progressive breakfast at our chapter house for some of the out-of-town guests.

Clara Froelich and Bess Morrison, graduates of last year, have visited us this month.

On the tenth of March one of our alumnae, Jane Ogilvie, is to be married to Mr. Gamel, of Madison, and we all are looking forward to this Kappa wedding with much interest.

The girls of Eta send wishes of happiness to all Kappas.

BESS SMITH.



BETA LAMBDA—UNIVERSITY OF ILLINOIS.

Beta Lambda is very glad to introduce to the readers of the KEY its three new members, Beatrice Swenson, Cara Swenson and Bessie Hanna, who entered the university at the beginning of the second semester.

Our annual party was given on the evening of February twenty-sixth. Three of the old girls visited us, Mabel Hayward, Ruth Abbott and Florence Armstrong. Besides these, five of our sisters from Epsilon chapter, Elizabeth Roe, Carrie Atkinson, Louise McIntyre, Emma Parker and Julia Holder, were our guests.

The university, and especially the chemistry department, have suffered a great loss in the recent death of Professor A. W. Palmer.

We are going to celebrate our chapter birthday, April twenty-eighth, by giving a play, entitled "Breezy Point," which is to be followed by informal dancing.

MAY SCOTT.



UPSILON—NORTHWESTERN UNIVERSITY.

Examinations are over and we are all glad to be back once more, ready to begin our second semester's work. Yet, when we look back over the semester that has just passed, and think what pleasant times we have had, we can hardly realize that more than half the year is gone, that before we know it we shall again be scattered for another summer's vacation.

Early this year we mourned the death of one of our alumnae, Miss Genevra Tompkins.

Upsilon enjoyed a visit this month from Miss Mildred Bishop, of DePauw. Carrie Marshall, one of our girls who was with us last year and whom we were so sorry to lose, is now down at DePauw.

Prom, the social event of the year, comes on Friday evening, February 26, '04, and we are all looking forward anxiously to a visit from a number of our girls who left school last year.

An Inter-Sorority Conference is now being held at Northwestern to consider the things given in the last number of the KEY.

Upsilon sends greetings to all her Kappa sisters.

JULE SOHRBECK.

EPSILON—ILLINOIS WESLEYAN UNIVERSITY.

Allow Epsilon to introduce to you three new, charming "freshmen," Hazel Funk, Hilda Buescher and Martha Hoult. The Kappa Club was present at initiation, which took place at the home of Carrie Leach, February 20. We also had Clara Fort, of Minonk, Ill., with us.

Epsilon girls were glad to welcome back Grace McIntyre.

Clara Naffziger is not with us this semester.

We have been having jolly times. The Kappa Club entertained the active chapter at the home of Mrs. Ferguson. We have had a leap-year dance.

The past week the college was quite astir over the annual college banquet, which proved to be one of the events of the college year.

Five of the active girls were fortunate to attend Beta Lambda's annual. It was most certainly a great treat to visit our Kappa sisters in their beautiful chapter house. Our Beta Lambda sisters are most charming hostesses and their annual was a great success.

All the chapters have Epsilon's best wishes.

ELIZABETH S. ROE.

DELTA PROVINCE.

CHI—UNIVERSITY OF MINNESOTA.

To all in Kappa Kappa Gamma, greeting !

So much has happened at Chi since she was last heard from, that it is rather difficult to know just where to begin, and just what events are of importance enough to be retained after a mental sifting process has been gone through with—however, Miss Paxson's and Mrs. Smart's visits, by the pleasant memories and helpful influences that they left behind, stand out as the first in importance.

Miss Paxson, in connection with her Y. W. C. A. work, was at "Minnesota" four days. A tea was given her by President and Mrs. Northrop at their home, at which one of our girls assisted. Mrs. Smart's visit was very short, only two days, so a luncheon and a reception by the alumnae had to be abandoned, that had been planned. Both Miss Paxson and Mrs. Smart were present at the Inter-(fraternity) Sorority tea given at the Delta Gamma house, Miss Paxson speaking on the high ideals of a true sorority woman, and Mrs. Smart on the real aim and object of the Pan-Hellenic Associations, which, she said, was to promote good feeling and fellowship rather than simply to regulate rushing. An impromptu meeting of Kappas was held at the home of one of our alumnae, Gertrude Hale, to meet Miss Paxson and Mrs. Smart the only evening that Mrs. Smart could be with us. When she left, it was a sad little delegation that went to the train, for even in that short time we had derived a great deal of pleasure and benefit from her visit.

A new custom has been inaugurated at Chi, that of having spreads once a month at the homes of the different girls ; four or five different alumnae are asked each time, and we find them lots of fun (not only the alumnae, but the spreads). At the last one we had our valentine box, and are now viewing each other with awe and admiration because of the wonderful productions in literature and art that that box disclosed.

The evening of February the fifteenth the freshman classes gave a play and one of *our* freshmen, Hazel Brown, had the leading part, covering herself and the production with glory and applause. With best wishes to all, from Chi,

MARY BROWNSON MORGAN.

BETA ZETA—IOWA STATE UNIVERSITY.

"The Kappa Kappa Gammas
Invite you to be
At their Leap-Year Party
In the Armory.
There'll be music, dancing
And much good cheer,
February fifth
Of this present year.
Ladies for this date
The honors will do.
Please come at seven and
Stay until two."

Such were the invitations, printed in dark blue on light blue paper, which Beta Zeta chapter sent to some five hundred of her friends. Since the fall we had planned for our "big party," which we give every two years, and at every meeting we worked on the decorations, and on the favors for the german, which was one of the features of the evening. The old armory was decorated in white as a background, with light and dark blue trimmings. The balconies on each side of the hall were divided off into boxes, where those who did not care to dance might sit and look on. Two mammoth golden keys were suspended, one at each end of the hall, the one over the stage where the orchestra sat and the other over the refreshment tables at the end of the balcony. Large fleur-de-lis, in dark and light blue, marked off the boxes from below and gave a most artistic touch to the ballroom, while innumerable small fleur-de-lis pinned to the white bunting were scattered over the entire sides of the room.

As it was a leap-year party, the ladies were the escorts. They entered into the spirit of the affair most enthusiastically, and it was great fun to see them scurrying about after partners for dances, or leading their gentlemen friends to the punchbowls or the refreshment tables. Pauline Crause, from Waterloo, led the grand march and the five german figures.

We really never appreciate our friends as we do when we give a big party. The Delta Gammas remembered us with beautiful flowers, and several of the men's fraternities not only sent delegations to help us decorate the armory, but also loaned us anything that we needed which their houses possessed in the way of furniture, rugs, cushions and curios for our Indian and Japanese

corners ; and our alumnae were, as always, ready to help in every way. Every one said they had a good time, and we hope they did. We had a good time getting ready for the affair, and tried to make it as perfect as possible in every detail.

Since the opening of the second semester we have been very much excited over our new pledgling, Ann Desellem, whom we expect to initiate this week.

We have had visits in the last two months from Harriet Peters, Clinton, Iowa ; Mrs. Helen Clapp Tanner, Davenport, Iowa, and Grace Padmore, Davenport, Iowa. At present we have with us Edith Macomber and Eula DeVoll. JOANNA G. STRANGE.



THETA—MISSOURI STATE UNIVERSITY.

Each corresponding secretary is trying her wings for the first time in this issue of the KEY, and no doubt we are all wondering how our Kappa world will receive our first attempt at a letter for Kappadom.

Theta has been very fortunate in having had Miss Paxson, whom we all know as one of the national secretaries of Y. W. C. A., with us for a short time. While she was here we had a tea for Y. W. and for Kappa girls to meet the friend who has done so much both for Y. W. C. A. and Kappa. One evening Miss Paxson talked to all fraternity girls, Pi Phis and Kappas, at our chapter house. We derived much pleasure and profit from her talk ; for she is a loyal fraternity woman and has learned much of fraternity and fraternity girls as she journeys from place to place in the interest of Y. W. C. A. During her visit we had the pleasure of initiating Berenice Vance, whom we introduce as Theta's latest Kappa.

We have also had a visit from Antoinette Starling, who was initiated in 1901. She lives in Mississippi, and came a long way to see Kappa friends. Though most of the girls she knew are not here now, we new ones tried to make up by our warm welcome for the absence of old friends ; for we are all Kappas, and that is the all-important bond.

Before another letter is due from Theta, we will all be scattered far and wide, but eagerly looking forward to our meeting with Kappas from East, West, North and South when convention comes in August.

Ida Howard, who was delegate at the Lincoln convention, has been chosen as convention marshal. She graduated in '99, then was abroad one winter. She is now living in Columbia and is a very enthusiastic and helpful alumna member.

CLARA L. SHELTON.

SIGMA—UNIVERSITY OF NEBRASKA.

Since Sigma's last letter, three more dear girls have put on the golden key—Minnie Gardner, of Auburn, Neb.; Lola Southwick, of Lincoln, and Lucy Van Horne, of Pawnee City, Neb.

The night before college closed for the Christmas vacation the Kappas had a Christmas tree at the house, and because of it the fraternity house is richer by a new red globe for the lamp, a new fire screen, many dishes and linen and some beautiful silver Kappa spoons, from our chapter president, Adele Lathrop, and Dr. Louise Pound. It was the first time this year that all the active and alumnae chapters have been together, as a whole—and we thought of the two dear girls across the water and wondered if they thought of us that night.

On January 30 the Pan-Hellenic Association, which is very active here, gave a dance at the university armory. The "men," dressed in black dress-suit coats, with powdered hair, escorted gorgeously gowned young ladies to the prom. They were most gallant in their attentions and created quite a bit of merriment at their many "stunts." After a grand march sixteen dances were enjoyed, the only stipulation being that no fraternity sisters dance together. At a late hour the company broke up, declaring it one of the most successful events of the year. The Association plans a vaudeville as the vehicle for its next public appearance.

Sigma has been very fortunate in having Mrs. Theodore Westermann, our Grand President and one of Sigma's own girls, with us to talk of Kappa and the coming convention at Columbia, Mo. She has inspired us with a strong desire to spend a happy week with Omega and the whole Kappa body. We hope many may avail themselves of the wonderful opportunity of appreciating how great and wonderful Kappa is. Sigma intends to send more than seven girls to this convention.

Then five short days has Miss Ruth Paxson spent with Sigma. She is a wonderful Kappa, and stands for the highest and purest

type of womanhood. Sigma entertained the alumnae chapter and the Y. W. C. A. cabinet at an informal musicale to meet Miss Paxson.

Sigma was very disappointed, indeed, that Mrs. Lucy Allen Smart was unable to make her proposed official visit to the chapter. We hope she may yet come sometime this year.

Chancellor Andrews came before one of our Monday night fraternity meetings to ask Sigma to pledge a certain amount for the Temple fund. Rockefeller has offered us two dollars for our every one, to build a new Temple Building for all large gatherings and meetings of the university. The whole college body is bending every effort to acquire the required amount. The Dramatic Club will give a minstrel show and the University Band will give a band concert in the near future for that same purpose.

One of our active girls, Kate Gellatly, was very quietly married to Mr. Leon Crandall, and will make her home in Lincoln. We are very glad that she will not leave Lincoln and so sever her active connections with the chapter.

To the chapters, one and all, Sigma sends greetings.

MABEL H. STEPHEN.

❧

OMEGA—KANSAS STATE UNIVERSITY.

Since the Christmas holidays Omega has been very busy, first with the final examinations and then settling down to the work of the new term. There have been many other things, also, to occupy our spare time. As soon as we came back after vacation, the annual whirl of fraternity "spring parties" began, each one trying to outdo the last. Our party is not to be given until after Lent and we have already begun to try to think of something to make it new and attractive.

We have now a new sister to introduce to you all. Olga Newlan, of Winfield, came to the university at the beginning of the term, and in a few days, now, we expect to initiate her, together with our other pledge, Ruby Chisham. We are making great plans for the initiation and already have the "pledges" trembling in the proper manner.

Miss Paxson, the secretary of the Y. W. C. A., whom many of you probably know, visited us last week. We gave a reception to all the fraternity girls one afternoon, in order that she might

meet them and talk to us all together. She told us many things that I think will be very helpful to us, in making us better fraternity members and better women, in the broader sense of the word. She made us feel that she was one of us, and when we saw how good and large-hearted she was, it could not but encourage us to try to attain in our fraternity life some of the ideals we so often talk about.

Greetings to all Kappas from

Omega.



BETA XI—UNIVERSITY OF TEXAS.

The most eventful day of the college year, to Beta Xi, was the sixteenth of January, for this day the faculty had agreed upon as "pledge day," the end of rushing season. Those of the chapters that have had a three months' contract can appreciate our joy and relief when it was all over and, as a result, seven of the finest girls in 'varsity were wearing the two blues. On the following Tuesday we initiated Lolla Judge, Alice Davis, Ellie Shelton, Annie James, Lois Broyles and Charlie Thurmond; two of our pledges, Helen Knox and Maie Borden, our latest acquisition, will be "put through" in the spring. After the initiation, at which we were so fortunate as to have with us Mrs. Lucy Webster Caldwell, Xi, '05, Olatia Crane, '02, and Marian Rather, '02, a banquet was served at the Driskill Hotel, to the initiates, Mrs. Caldwell acting as toastmistress.

Beta Xi has been enjoying the delightful social life of a chapter house this winter, as well as the broader affairs of the university. On February 3rd Phi Delta Theta entertained the girls of Kappa Lodge with an informal dance, and on the thirteenth several of us were present at a valentine dance at their delightful chapter house. On the twenty-second the university girls gave an altogether successful dance in the gymnasium, all men being strictly forbidden. The town girls gave a leap-year dance this month, which our girls, with true leap-year independence, attended in a body.

The members of Beta Epsilon, local, applicants for K A @, entertained Miss Marian Whipple, Leland Stanford, president of Gamma Province of K A @, in January. They tendered her a very enjoyable reception, and Pi Beta Phi entertained her with a

tea, and Kappa at dinner. There are vague rumors of Theta and $\Phi K \Psi$ coming into "Texas" this spring, and we shall be very glad to welcome two such strong fraternities into our corner of the Greek world. A recently organized local sorority has applied informally to Delta Gamma for a charter.

You must not think, dear Kappa sisters, that Beta Xi is entirely given up to frivolity. Indeed, we are very proud of the reputation as students which we are making for ourselves, and that not only the faculty, but the student-body, recognizes that Kappa Kappa Gamma means far more than mere pleasant relationships and social life in college. In spite of our youthfulness, from a fraternity standpoint, we have set up for ourselves a lofty—oh, very lofty—standard, and we are working for the day when our Northern sisters may look across the States between us and say of us in the far Southland, "There, in Texas, is an ideal chapter."

MARY WILLIS STEDMAN.



PI—UNIVERSITY OF CALIFORNIA.

Our first big gathering this term was the freshman show in the early part of February. All our alumnae who possibly could come were on hand, and the evening was a jolly reunion. Several of the upper classmen who had never taken part in such an affair joined in with the freshmen this year, so with this added talent the show was an unusual success. It was what might be called a comic operetta containing hits and joshes on the girls. After this came the presentation of presents to the house, and then a spread. We were very delighted to have with us that evening Miss Avery, from Kappa, and Miss Allis, of Beta Gamma.

The following week Mrs. Smart visited us. One of our members while at San Diego this vacation, had some long fraternity talks with Miss Sinclair and brought back a great deal of her enthusiasm to us. Through these two we feel that we have been brought into closer touch with Kappa as a whole than ever before. It is natural for us way out here in the West to feel a little out of things at times, but we are going to do all we can to overcome this and to develop a national spirit that no one can sneer at.

According to the national agreement we have formed a Pan-Hellenic, with seven fraternities represented. One open meeting

has been held, at which at least fifty or sixty girls were present. The discussions of the different questions were very interesting and beneficial, although no definite action was taken on any of the questions. We hope for great things in the future.

MYRTLE L. SIMS.




BETA ETA—LELAND STANFORD JR. UNIVERSITY.

Beta Eta has been very fortunate in having with us this semester Mrs. Smart, who paid us an all too short visit on her return trip from Washington. Through her, we who are so far removed from the center of Kappa activities, feel that we have come into closer touch with our Eastern chapters, and realize more than ever before the sacredness of Kappa bonds.

The graduation of two of our number at Christmas has left a gap to which it is hard to become accustomed. With these exceptions, however, all the girls have returned, and we have in addition Edith Cory, a new Kappa, to whom we wish to introduce you all.

MARGARET BURKHALTER.





In Memoriam.

ALICE CORNELL.

Died in Los Angeles, California, February 1st, 1904, Alice Cornell.

Alice Cornell was born and spent most of her life in Youngstown, Ohio, where her father held an important position in the educational work of the city. His daughter, very naturally, received her first training in the public schools of her home. Later she spent a year in Smith College, and after a short time in Oberlin College, entered Wooster University in the fall of '94, and was graduated with the class of '96. Her time since has been spent in teaching, and more recently in the work of a private secretary in Mansfield, Ohio, which has been the home of her parents for some eight years past.

After her father's death in October, Miss Cornell, with her mother and sister, went to southern California, hoping that the winter in the sunny state would bring vigor to Alice, who had not been strong for two years. And so it promised, till a seemingly trifling illness renewed the attack of the lurking foe, and caused her death in only a few days. The interment occurred in Mansfield, February 8th.

Beta Gamma Chapter, with two older sisters already on its roll, claimed Alice Cornell from the beginning of her student days in Wooster, and very generously did she give of her loyalty and love to Kappa Kappa Gamma.

Brightness, kindliness, and an abundance of energy and spirits are the qualities that come to the writer as she thinks of Alice Cornell in the college days, and they were qualities that made her a favorite and a leader wherever she was. At her home, too, her personality brought her prominence in church and social life. There are very many in whose memory the thought of her loveableness and good deeds burns bright, who knowing her, to say though through their tears, "She is not dead, she's just away."


ROSAMOND PIERCE PARISH.

For the first time in its history, Eta has been called upon to mourn the loss of an active girl. The terrible Iroquois fire in Chicago, which brought sorrow to so many homes all over the country, took from us one of the girls who had worn the key but three months.

Rosamond Pierce Parish of Chicago, came to college in fulfillment of one of the greatest desires of her life. She was a girl of exceptional ability, and possessed a special talent for writing and illustrating. From the very first she showed herself the loyal Kappa which she was to the very end. The key which she had worn during her short life with us, she wore at the time of her death. Her place among us can never be filled. In her we have lost a noble woman, a loving sister and a loyal Kappa.

ETA CHAPTER.





In Memoriam.

HELEN HASKELL WARRINER.

The sorority suffered a severe affliction in the death of Helen Haskell Warriner, last December. She had not been well during the summer, but it was hoped that the winter in the South, with freedom from the routine of school work, would restore her health. She went South on the 1st of November, and on the 22d, her mother was sent for, and from that time until the last sad news came, her friends fluctuated between hope and fear. She was of a most sweet and loveable nature, entirely unselfish and devoted to her family, most loyal to her sorority, and very true and faithful in every relation. No one of the non-resident alumnae was more closely in touch with the chapter, none showed a livelier interest or inspired a warmer affection.

MARY HILL, '77.

MRS. MAY IHRIG CAMPBELL.

Another link has been broken in the chain of Beta Gamma's Alumnae. Another loyal Kappa has been taken from our circle. Called, when to us she seemed most needed—yet we know that she was a pearl without price, and that our loss is surely her gain.

Mrs. May Ihrig Campbell, wife of Rev. Robert L. Campbell, pastor of the First Presbyterian church of Marion, Iowa, died at the family residence in that city at 5 A. M. January 25, after a lingering illness. The deceased was born and grew to womanhood in Wooster. She received her education in the public schools of this city and the university. While a student in the university, she became a member of the Kappa Kappa Gamma fraternity.

GENEVRA TOMPKINS.


Died on January 25th, 1904, Miss Genevra Tompkins, '96.

WHEREAS, We desire to express to the bereaved sister and friends of Genevra Tompkins, our deepest and most tender sympathy; therefore, be it *Resolved*, That we, the members of Upsilon Chapter of Kappa Kappa Gamma, in the death of Genevra Tompkins, lose a loyal Kappa and valued friend; also, be it

Resolved, That the members of this chapter tender their heartfelt sympathy to the sister and relatives in their present sorrow; also, be it

Resolved, That a copy of these resolutions be sent to the bereaved sister, to the KEY and to the Northwestern.

EDITH T. BRADLEY,
POLLY B. LITTLE,
MARIE B. MCKINNEY.





PI CHAPTER HOUSE—UNIVERSITY OF CALIFORNIA.

EDITORIAL.

A Visit to Western Chapters.

SINCE the last issue of the KEY, the editor has visited Minnesota Kappas, active and alumnae; inspected Washington State petitioners, organized a Washington A. A., spent a couple of days each with Berkeley actives, Berkeley alumnae, Stanford actives and alumnae, encouraged the organization of a San Francisco A. A., and visited Boulder and Denver Kappas. Seven thousand miles and eighteen States in twenty-three days!

For the benefit of the fraternity at large and for mutual understanding between Council and chapters and Alumnae Associations, the present Council has deemed it a wise expenditure of funds for the officers to visit the chapters. So en route to and on the road home from Seattle, your humble scribe gave the grip to a couple hundred or more key wearers. To say that the trip was profitable to the editor is putting it mildly, and she is sure that if the meeting meant half as much to the Kappas visited, the money and time spent have reaped a hundredfold. At Minneapolis she not only enjoyed the Kappas who have been leaders if not *the* leaders for twenty-four years, but she had the pleasure of meeting Miss Ruth Paxson, the General Secretary of the Y. W. C. A., who has done more than any one person to bring about fraternal feelings among the different fraternities.

Seattle, situated on the hills, overlooking several bodies of water, was pleasing because of its natural beauty, evident prosperity and good cheer, and because a number of Kappa alumnae were anxious to organize so as to come more closely in touch with our fraternity. The private report on the petitioners has gone to the chapters.

The approach to Berkeley, the mountains and the Sacramento River were a perfect indication of the beautiful hospitality awaiting me in California. The University of California, comfortably resting on the hills looking beyond to the Golden Gate, is an institution that stands for intensive extension. Kappas there, live in a capacious house, where they halve each other's sorrows and double each other's joys. The Pi alumnae, too, are altruistic in maintaining a scholarship in the chapter. Miss Wickson, the

Grand President of Kappa Alpha Theta, welcomed me to her college home, with a beautiful bunch of white fleur-de-lis. Inspiration and profit were gained from meeting this capable woman. Every courtesy was extended by Kappas past and present of Berkeley, and my heart goes out to them. The alumnae are much interested in Kappa and will send a delegate to convention.

The beautiful Mission architecture of the world-famous Leland Stanford Junior University was pleasing in the extreme, and the Kappa house was even larger and the rooms more spacious than the pictures show. This house was built by a Beta Eta stock company and is a possession that pleases Kappas everywhere. Stanford Kappas are a most congenial crowd of girls among themselves and they make a guest "right welcome." One affiliate from Buchtel and one from Illinois State give the chapter a vision of the outside Kappa world. Stanford alumnae met with me one day in the city and while climbing Samalpais and eating luncheon at the tavern we talked over Kappa affairs in general and Stanford affairs in particular. I urged the organization of an association at Frisco to take in Kappas from all around the bay.

The next stop was at Denver, where the Denver alumnae breathe pure air and they show pure hospitality. The association represents a number of chapters and are enthusiastic to the extent of sending a delegate to convention.

Boulder Kappas live in a house which they rent, and although the chapter is young, it is making its way in this growing State institution, where two other national fraternities preceded it.

A call from home precluded a stop at Lincoln and Chicago, so the editor missed some of the treats of the trip.

A private report has been sent to the Council.

Vassar Kappas.

THE following letter is a very welcome one, and shows that loyalty to Kappa exists wherever wearers of the key meet; even though that meeting place be a woman's college which is hostile to national fraternities. We are glad to print this letter, and hope that similar ones will come from other unexpected sources:

VASSAR COLLEGE, POUGHKEEPSIE, N. Y.

Dear Sisters in Kappa :

We have been having a little Kappa reunion at Vassar, where, unknown to the Grand Council or the fraternity at large, there exists a nameless chapter. Arriving from different universities, we were much surprised to find other girls here wearing the key, and we have had several informal meetings for fraternity gossip. The fact that we all come from different chapters insures an unusual number of subjects, which we discuss and consider from our naturally different points of view, since our homes lie as far apart as from New York to Kansas. Lucina Huestis represents Psi ; Lois Main, Eta ; Edith Moore, Chi, and Louise Miller, Omega. Until Christmas time Adda Hulbert, from Beta Zeta, was one of our circle. The usual cause for meeting is the arrival of a Kappa visitor. The first one we had with us was Gertrude Vollrath, from Beta Gamma ; then Eliza Dorrance Huestis, from Psi ; Cleora Wheeler, of Chi, and Jean Egleston, of Beta Epsilon, who inspired this letter. Loyally,

VASSAR CHAPTER.

