

# the KEY

OF KAPPA KAPPA GAMMA  
FEBRUARY 1953



## ***The significance of serving***

Do you realize the magnitude of our Kappa Students' Aid Program? Here again Kappa Kappa Gamma excels among the Panhellenic groups. Our Fraternity has already contributed over half a million dollars to the higher education of women in America and in many foreign countries. This year alone we are awarding over fifteen thousand dollars. Women students—members and non-members—have earned these awards by their high scholarship and active campus participation. This is another important area which has brought Kappa widespread recognition in the educational field.

Our own Rose McGill Fund is one of the Kappas' main interests. It was established by the desire to assist a young woman in her fight to regain her health. Expanding through the years, it has played a significant part in the lives of many Kappas both young and old. These borrowed words of a prominent fraternity man exemplify its merit: "This service alone would make any organization worthwhile."

Kappa Kappa Gamma assists others in the local communities through the Rehabilitation Services established at the 1952 convention. Through our various alumnae groups and university chapters we have adopted many worth-while projects which include material aid and service.

Through this overall philanthropic program Kappa is fulfilling a vital service and civic responsibility. Each of us has an instrumental role in the continued success of these valuable endeavors.

*Ruth Armstrong Harris*

*Director of Philanthropies*

# the KEY

OFFICIAL MAGAZINE OF KAPPA KAPPA GAMMA

VOLUME 72

NUMBER 1

*The first college women's  
fraternity magazine*

*Published continuously  
since 1882*

FEBRUARY • 1955

Entered as second class matter March 29, 1929, at the post office at Columbus, Ohio, under the act of March 3, 1879. Additional entry at Menasha, Wisconsin. Accepted for mailing at the special rate of postage under the provisions of Sec. 34-40 Par. (D) provided for in the act of October 3, 1917. Copyright, 1955, by Kappa Kappa Gamma Fraternity.

**Publication dates:** THE KEY is published four times a year, in February, April, October, and December, by the George Banta Publishing Company, official printer to Kappa Kappa Gamma Fraternity, 450 Ah-naip Street, Menasha, Wisconsin. The price for a single copy is 50 cents, for one year \$1.50, for two years \$2, and for life \$15.

**Change of address** is to be reported to the Fraternity Headquarters, 530 East Town Street, Columbus 16, Ohio. Requests for change of address must reach the Fraternity Headquarters, six weeks previous to month of publication. Duplicate copies cannot be sent to replace those undelivered through failure to send such advance notice.

**Items of a business nature** should be sent to the Business Manager, Miss Clara O. Pierce, Fraternity Headquarters, 530 East Town Street, Columbus 16, Ohio.

**Material for publication, and editorial correspondence** should be addressed to the Chairman of the Editorial board, Mrs. Robert H. Simmons, 156 North Roosevelt Avenue, Columbus 9, Ohio.

**Deadline dates** are August 1, September 25, November 15, January 15 for October, December, February and April respectively. Member of Fraternity Magazines Associated. Printed in the U.S.A.

COVER: THE KEY visits the home of Upsilon chapter, Northwestern University, Evanston, Illinois in honor of their being the runner-up for the Standards Cup at the 1954 convention. Theta chapter, the winner, has been visited by THE KEY. On the cover is the majestic Gothic Charles Deering Library which overlooks the Deering Meadow.

*Inside front cover . . . The significance of serving*

- 3 Delta Omega installed at Fresno State
- 7 THE KEY visits Upsilon chapter, Northwestern University
- 8 Their goals are high
- 13 Housemother to housemothers
- 14 Introductions are in order
- 16 Hearthstone board "Who's Who"
- 18 She out-Kappas the Kappas
- 20 Down Theta province way
- 27 Alpha province extends to three countries
- 35 Alumnae news around the globe
- 36 Whatever happened to . . .
- 42 Careers and Kudos
- 44 In Memoriam
- 45 Campus highlights
- 46 THE KEY honors these Mortar Board members
- 53 Pledges





## ***The Key Welcomes***

Moonyeen Apperson  
 Dorothy Arneman  
 Mary Blaisdell  
 Vivienne Briglia  
 Dorothy Brodersen  
 Patricia Carter  
 Suzanne Cowan  
 Bernadette Fries  
 Dora Jean Glenn  
 Margaret Good  
 Jean Gorton  
 Kay Keim

Marian Loewe  
 Diane Medoff  
 Margaret Meyling  
 Ina Mae Nichols  
 Sally O'Neal  
 Patricia Sommers  
 Diane Spencer  
 Grace Swanson  
 Elizabeth Wacaser  
 Myra Zahlis  
 Clarice Zwetzig

**Charter members of  
 Delta Omega chapter  
 Fresno State College  
 Fresno, California**



# ***Delta Omega installed at Fresno State***

by MARGARET SCHAAF REES

Δ H-Utah

ELIZABETH WILSON BUEHLER

Γ T-Whitman

True friendship is a lovely thing—  
The shadow sweep of heaven's wing  
Folds it in grace.  
With that wise counsel born of love  
The Godhead blessed it from above  
Our selfish space.

And granted great and lesser may  
As sisters for their earthly day  
Each take her place.  
Acknowledging His will, do we  
In secret bond of KKG  
Seek friendship's face.

NAN DALEY, Γ A-Middlebury  
*Upon the occasion of the  
installation of Delta Omega chapter.*

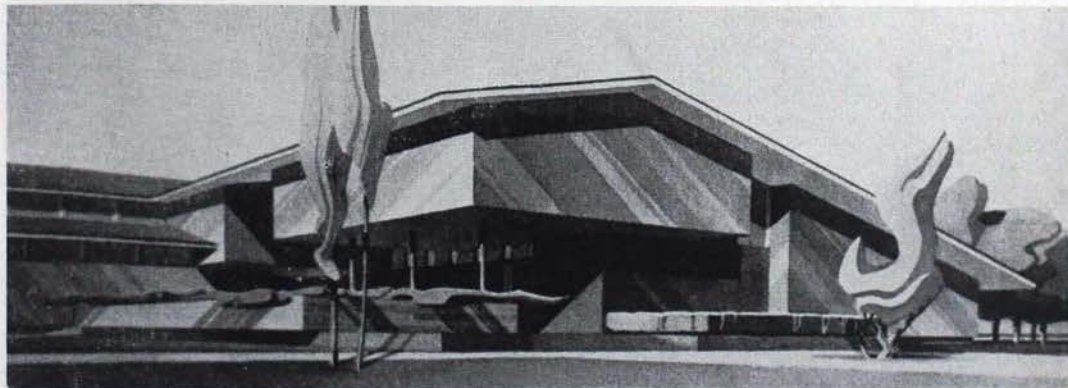
**F**resno, California, in 1910 was a prosperous young community which had begun to feel the desirability of an institution of higher education. A small but steady migration to California was even then noticeable. While the larger universities were growing, forward-looking citizens knew the time would come when colleges would be placed at strategic cities throughout the state. In Fresno a junior college was established in 1910. The following year a state normal school was authorized and the two institutions were administered together. They formed the basis on which Fresno State College was founded, although this did not occur until 1921 when the two schools were permanently united and the

college expanded to a four year institution with authority to grant the B.A. degree.

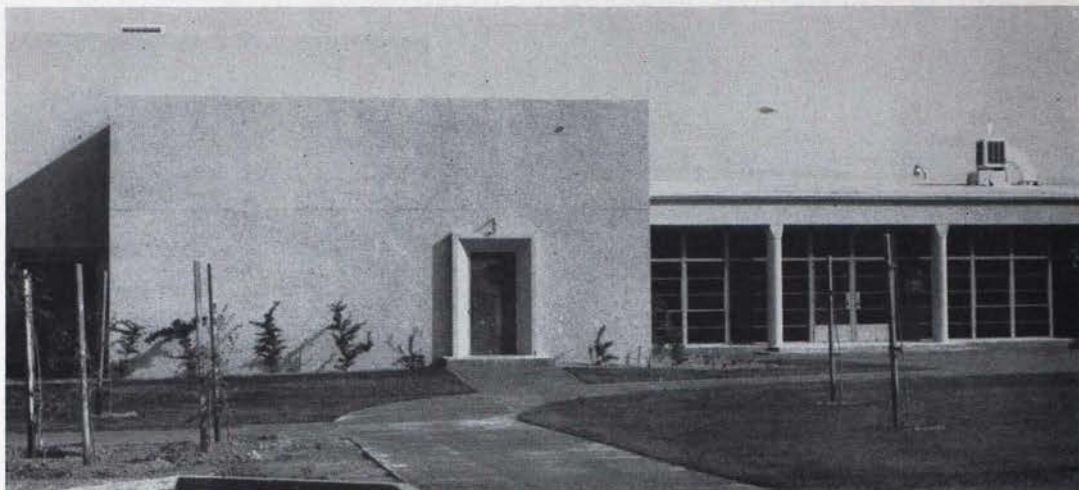
In 1935, the "normal school" emphasis was displaced by a college program of varied aspects with majors in such fields as engineering, pre-law, pre-medicine, education, business, and related disciplines. Fresno State then embarked on its role of a four year liberal arts college, augmented in 1950 when the college started to grant master's degrees.

The college, located approximately in the geographical center of the state, is in the heart of the San Joaquin Valley, the largest and most fertile valley in the United States—a vast area of agricultural wealth 75 miles wide and 250 miles long. Many people first

*Architect's rendering of the proposed Agricultural Department building for the new campus.*







*The Industrial Arts building, one of the completed buildings on the new Fresno campus.*

heard of Fresno as the name on the back of a package of raisins. It is also the world's sweet wine and grape center. Fresno County boasts the largest fig gardens in the world and is one of the top cotton producing counties in the state and nation.

Fresno is now a city of 107,000, the largest city between San Francisco and Los Angeles. It has become the state's convention city. Because of its location, it is an easy and pleasant trip to the mountains or the ocean.

Fresno State is in the process of moving to a beautiful new campus seven miles east of its present location where the city has grown around and engulfed it. The new campus, encompassing 880 acres, will have 25 modernistic buildings. College administrators hope to complete the move to the new campus by

the spring of 1956.

Just to the south of the new campus 20 acres have been set aside for future living accommodations for fraternities and sororities. Ten acres are for men's groups and seven for women's; the rest are reserved for fraternal expansion. These lots were purchased by business men's groups to be held against the time when they would be needed by the fraternal groups, thereby preventing speculation with the land and resulting high prices.

There are now ten men's fraternities— $\Delta \Sigma \Phi$ ,  $K \Delta P$ ,  $K \Sigma$ ,  $\Lambda X \Lambda$ ,  $\Phi \Sigma K$ ,  $\Sigma A E$ ,  $\Sigma X$ ,  $\Sigma N$ ,  $\Sigma \Pi$ , and  $\Theta X$ . For women there are now  $A \Xi \Delta$ ,  $\Delta \Gamma$ ,  $\Delta \Sigma E$ ,  $K A \Theta$ ,  $K K \Gamma$ ,  $\Phi M$ ,  $\Sigma \Sigma \Sigma$ . With the installation of  $K K \Gamma$ , the last local group vanished from the scene.

Delta Kappa, the first sorority formed at

*Visiting officers included Eleanore Goodridge Campbell, director of membership, Ruth Armstrong Harris, director of philanthropies, Clara O. Pierce, executive secretary-treasurer, Mary Turner Whitney, vice-president and Ruth Ann Tyler, field secretary.*







Installation committee chairmen included: standing, Mary Jo Keron Hoop,  $\Gamma$  H-Washington State, Margaret Schaaf Rees,  $\Delta$  H-Utah, Nan Belisle Daley,  $\Gamma$   $\Delta$ -Middlebury, Barbara Rhodes Ericksen, B II-Washington, Winifrid Manning Hollingsworth, B II-Stanford; seated, Peggy Amberson Tacchino,  $\Gamma$  O-Wyoming, Elizabeth Wilson Buehler,  $\Gamma$   $\Gamma$ -Whitman, Marjorie Marvin Harkness,  $\Gamma$   $\Xi$ -UCLA, Carol Mehrer Wilde,  $\Gamma$  H-Washington State, Mary Lou Maurhoff,  $\Delta$   $\Xi$ -Carnegie Tech, graduate counselor.

Fresno State College, was the last to become a chapter of a national sorority, an indication that these girls showed a constancy of spirit in knowing what they wanted and being willing to wait for it. The history of Delta Kappa is a varied one. It was first organized in 1917 as an off-campus group. Shortly after, in January of 1918, the group was officially named Delta Kappa and in December it was recognized as a campus group by the college administration. This happy state of affairs continued until June of 1919 when the college administration, as a general policy, rescinded approval of any Greek letter names on the campus. Not daunted by this decree and

determined to keep together, the Delta Kappas renamed themselves "Da Kapo," which name they retained until May 22, 1923, when they were permitted to reassume their original Greek letters, Delta Kappa.

The first formal charter petition to Kappa by the Delta Kappas was made at the 1952 convention. It was then felt that further expansion in California was not justified. The Delta Kappas were only slightly discouraged by this negative response. In this feeling they were joined by the local Kappa alumnae.

In 1953 Kappa president, Edith Crabtree, in San Jose for the Kappa province convention, consented to come to Fresno for an unofficial



At the reception tea table Ruth Griffith Einstein,  $\Pi^{\Delta}$ -California, pours while Adelaide Stewart MacAlpine,  $\Pi^{\Delta}$ -California and Mary Lou Maurhoff wait to help.





Right: Diane Medoff, Delta Omega president, Margaret Meyling, Grace Swanson, charter members, congratulate Hespera Haugham Mikesell,  $\Gamma$   $\Omega$ -Denison, the toast-mistress.



Above: Visiting actives from other California chapters visit at luncheon with Helene Cashatt Drais, B N-Ohio State, chapter council adviser.

Left: At the flowerdecked banquet table were installation marshal Margaret Schaaf Rees, Helen Snyder Andres, banquet speaker, Mrs. Crabtree and Mrs. Whitney.



Below: In the receiving line were Fraternity President Crabtree, Betty Allen Henderson,  $\Delta$   $\Omega$ -Fresno, sponsor, and Adalaide Stewart MacAlpine,  $\Pi^{\Delta}$ -California, hostess.



visit. After seeing the campus and the town, meeting the Kappa alumnae and the Delta Kappas she felt, with us, that at Fresno State we could have a fine, representative Kappa chapter. The following November the inspection committee visited the campus and voted unanimously in favor of allowing Delta Kappa to petition for a charter.

And so the Delta Kappa petition went to the 1954 convention! Margaret Schaaf Rees,  $\Delta$  H-Utah, president of the Fresno alumnae association and their delegate, and Elizabeth Wilson Buehler,  $\Gamma$   $\Gamma$ -Whitman, past association president went to answer questions convention delegates might have concerning the Fresno group and to act as sort of a "friend at court." The petition was unanimously approved by convention.

The Fresno convention delegates hadn't unpacked their bags before the local alumnae began demanding installation jobs from Margaret Schaaf Rees, the marshal. Winifrid

Manning Hollingsworth, B H-Stanford, handled wardrobe, and Helen Shugrue Sharp,  $\Delta$  H-Utah, properties and equipment. Host-essing was handled by Peggy Amberson Tacchino,  $\Gamma$  O-Wyoming, and Mary Jo Keron Hoop,  $\Gamma$  H-Washington State. Music fell to our sister trio, Barbara Rhodes Eriksen, Maybeth Rhodes Buck, and Dorothy Rhodes Hines, all from B  $\Pi$ -Washington, Anna Belisle Daley,  $\Gamma$   $\Delta$ -Middlebury, inherited examinations and eligibility. Carol Meher Wilde,  $\Gamma$  H-Washington State, and Marilyn Smith Brown,  $\Pi^{\Delta}$ -California, ran the "traveling" registration desk. Publicity and finance were assumed by Marjorie Marvin Harkness and Jane Baker Willey, both  $\Gamma$   $\Xi$ -UCLA, as part of their regular alumnae offices. A special committee called "Boy at the Dike" was shared by two  $\Gamma$   $\Gamma$ -Whitman Kappas, Elizabeth Wilson Buehler and Virginia Stewart Stutfield, whose job was to plug any leaks in

(Continued on page 52)



# ***The Key visits***

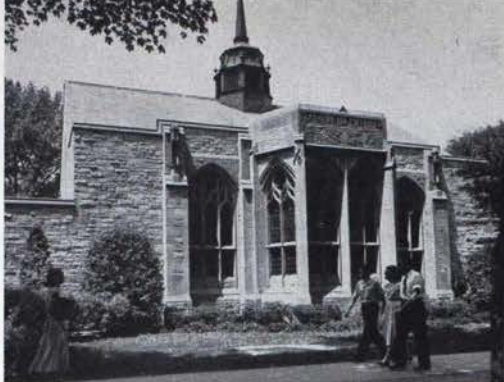


*Chicago Tribune Photo*

Aerial view of the campus showing the crowd gathered in Deering Meadow to hear President Eisenhower speak during the World Council of Churches meeting held on the campus.

***Upsilon Chapter***  
***Northwestern University***  
***Evanston, Illinois***





Lutkin Hall, above, a non-denominational church, where guest speakers from all over the world lecture each Sunday for students and Evanston residents.

Kenneth F. Burgess, below, president board of trustees, President Miller, President Eisenhower, hear Dr. Geoffrey Fisher, archbishop of Canterbury speak during the World Council of Churches.

## The Dean of Women says:

Kappa Kappa Gamma has been a part of student life at Northwestern since 1882. Within the chapter circle hundreds of girls have had an opportunity to share the purposes and ideals of fraternity. Close fellowship, good scholarship, high social standards, service and leadership on the campus—these shared goals have helped each Upsilon Kappa toward achievement of her greatest personal growth.

Bonds of the fraternity circle have given many college girls a first sense of self worth and then of self responsibility. Members of Upsilon chapter of Kappa have inherited the tradition of a sincere friendliness which extends beyond the chapter door. They have the tradition of loyalty for and service to Northwestern University.



CLAUDINE V. MASON

# Their goals are high

by JENNIE LOU SINGLETON  
and VALERIE THACKER  
*Y-Northwestern*

Northwestern University affords one of the finest educations offered in the country today, not only because of its high academic standards, but also due to its ideal location. Situated on the shores of Lake Michigan, in one of the neighboring suburbs of Chicago, enables the students to enjoy the many cultural aspects of a large city, such as operas, plays, art exhibits, as well as its professional contacts. Northwestern is a privately supported institution and is the only independent school in the Western, or Big Ten, conference. The undergraduate division, with an enrollment of approximately 6,500, is composed of seven colleges; the colleges of Liberal Arts, Commerce, Education, Music, Speech, Journalism, and the Technological Institute. This rather unusual arrangement in the division of the separate schools was provided to avoid an "assembly line" education. The Graduate School, also on the Evanston campus, was formed in 1910 to coordinate and expand the existing facilities for advanced study and research.

In 1926, the Dental, Medical, and Law schools of the University were brought together on a new campus in Chicago, and have remained there for the sake of proximity to hospitals, courts of law, and sources for clinical material.

The history of Northwestern University is a fascinating story, not only because of the hardships the founders faced in the still rough and uncultured areas of the great mid-west, but because of those very men themselves, who gave so much of their energy and time. This group of educational pioneers, who first met in May of 1850, was headed by Dr. John Evans, who was not only a physician and a member of the staff of Rush Medical College in Chicago, but a religious leader, a



builder of cities and railroads, founder of Denver University, and the Territorial Governor of the state of Colorado. During the ensuing year, the formal plans were drawn up by Dr. Evans and his prominent committee which included: three lawyers, Grant Goodrich, Henry W. Clark, and Andrew J. Brown; two business men, Orrington Lunt, and Jabez Botsford; and three Chicago Methodist ministers, Richard Haney, R. H. Blanchard, and Zadoc Hall. On January 28, 1851, the charter, which was finally approved in June of 1850, became a law, and Dr. Evans, after whom Evanston was named, was elected president of the Board of Trustees. They in turn appointed Dr. Clark Titus Hinman as the first president of the University.

The site of the University was first suggested by Orrington Lunt. Because of his enthusiasm, the land was purchased by the board of trustees. A three story frame building was built on the property. In November of 1855 the first classes were held. Northwestern University persistently gained in academic prominence, though it was not an easy road. As it grew in reputation it also continued to expand. In 1869, the University took a revolutionary step and decided to accept women into the classes on an equal basis with men. For the sum of \$1.00, the Evanston College for Ladies agreed to become incorporated into the University.

On April 18, 1882, Upsilon chapter was first established through the able help of Mu chapter at Butler University. Those first members: Anna M. Boyle, Lucy Wood, Grace Little, Minnie Scott, and Kate L. Sharp, were primarily interested in forming a literary program, by which each member might benefit intellectually through discussion and various readings of classic and contemporary works. The first meeting place was in room 28 of what is now known as the Music Administration building—previously Willard Hall, the first girl's dormitory. Today the chapter is housed in the University's beautiful ivy-covered quadrangles, built expressly for all the women on campus, including all the sororities, independents, and freshman women.

Among the many achievements and contributions that Upsilon has offered for the bene-

*(Continued on page 62)*

## The President says:

The primary obligation of a university is to serve the general cause of knowledge and to serve particularly those who join its family in pursuit of education and guidance.

The obligations of university and college social organizations are similar to those of the school. This mutual responsibility is best fulfilled when a cooperative spirit pervades the relationships between the two.

The Kappas at Northwestern University have unfailingly evidenced their appreciation of the fact that service is the essence of their purpose on and off the campus. Their notable contributions to the Northwestern community and to the larger community of which Northwestern is a part, justify their pride in their local chapter and this record commends itself to all who would be of service here and elsewhere in the nation.

J. ROSCOE MILLER



Above: A favorite meeting place between classes is the "rock" located between Harris and University Halls.

Below: Thanksgiving Day at the Miller home. Standing Richard Pepper and wife Roxelyn Miller Pepper, T-Northwestern. Seated Jacquelyn Miller, PΔ-OHio Wesleyan, Bernice Johannesen Miller, Δ H-Utah, holding her three month old grandson, Dr. Miller, James Randall Miller.







Pajama-clad Kappas gather at the house one Friday night each fall quarter to honor the new pledges at the traditional Owl Party. As the actives set up the dining room for refreshments, practice entertainment and turn the living room into a glorified dormitory, each future big sister, equipped with a ball of string unwinds it into a gigantic spider web maze. The pledges, waiting in the chapter room, are given the end of the unwound ball of string and by following the maze discover their big sister at the other end. Refreshments are then served, and planned and impromptu entertainment is followed by singing.

Every spring chapter council invites the actives to attend a round table discussion. At this time each officer presents her program for the following year and asks for suggestions. New ideas are discussed, and the chapter tries to foresee all problems that may arise in the coming year. In the morning preceding round table separate meetings are held by each officer to reevaluate the past year's program of the office. It affords the outgoing officers the opportunity to give ideas from their experience, and at the same time, gives the new officers a chance to formulate workable plans which the whole chapter will support.



Active chapter members

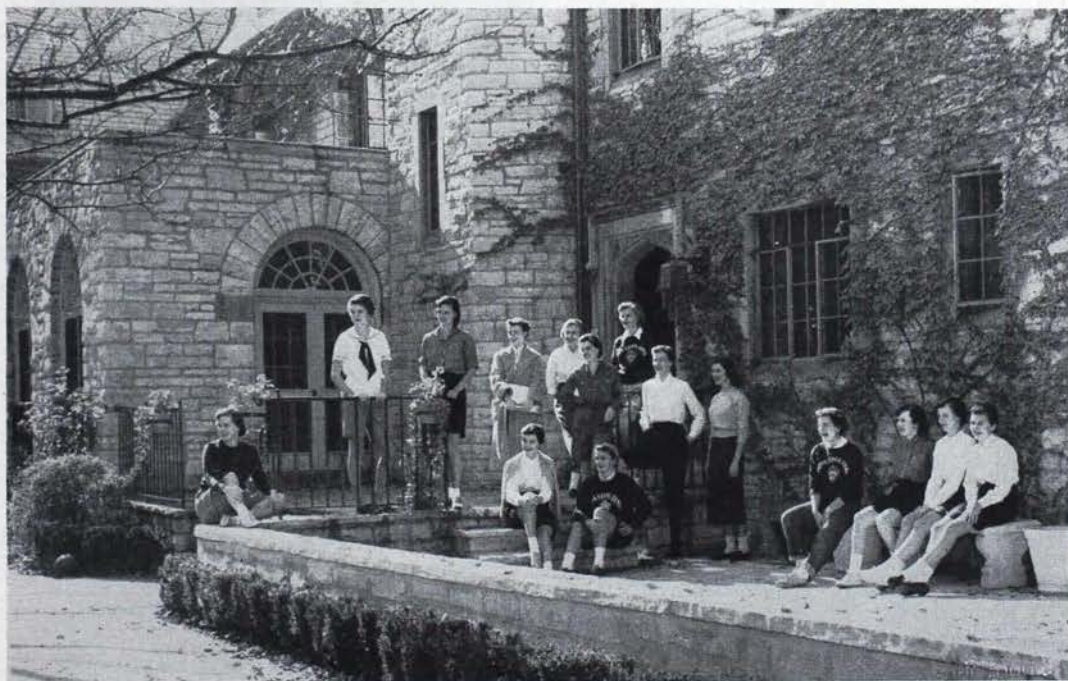


A campus relations office promotes Kappa's relations with the administration, faculty, and other houses. It handles all invitations and notes, guests and speakers, parties and teas connected with the campus and sends notes, flowers, telegrams, etc., to members who do outstanding things on campus. Birthdays are remembered through cards. A calendar of all Kappa and campus functions is also posted each month. Purchases handled by the campus relations chairman include fraternity flowers and gifts for the house director, the help and the Seniors.

Dr. Richard Ellman, of the English department, one of the administration or faculty members frequently invited to dinner, drinks coffee during his visit to the house.



The 12-Tones, a Kappa singing group, originally organized as a quartet in 1951. By 1954 they had grown to their present size and had adopted their name, The Kappa 12-Tones. They are a strong public relations mechanism as they are called upon to sing at such events as the KKG formals, Father's week-end, and campus Red Cross shows. The girls are hoping to try out for a radio amateur hour this winter and make a record in the spring. Entertaining in October at the Father's Day brunch: Jane Oldberg, Ellie Wood, Sally Franzheim, Corinna Heidbrink, Jeanne Powers, Claire Billow, Megan O'Connor, DeeDee Staunton, Jean McFadden, Mary Markley, Marcia Noyes, and Nan McMahon. Their leader is Fay Walker.



Exterior of Upsilon's chapter house





A topic for much discussion was the success of Upsilon's philanthropy project. Kappa actives and alumnae working in conjunction with SAE actives and alumni sold theater tickets for a production given at Showcase Theater, Evanston. Profits permitted Upsilon to "adopt" a chapter-chosen Northwestern student. Extending an invitation to this student to accept the house as her second home and to take her meals there, topped by the desire for mutual friendship has been broadening and rewarding.

To stimulate more than "passing" interest in the academic life of the University, the scholarship committee works closely with chapter council. During the planning period before each quarter the scholarship chairman meets with the social, campus relations, intramural and pledge chairmen to stress the importance of adequate time for study. Officers and chapter are aware of the need to maintain good scholarship. In the Fall of 1953 each member of the 31 pledges "made her grades" and was initiated! This alone was an unique performance on the campus, but the chapter had the additional honor of rising from fifth to second to first standing with the other 28 women's houses. Chapter advisers and Dean Mason were guests at the Scholarship banquet.

Through the big/little sister program, each active has the role of scholarship chairman. The big sister checks the little sister's weekly tests and success (a record is kept by the pledge scholarship chairman); she encourages her to continue conscientiously and to note frequently the permanently posted list of majors and strong subjects of the active chapter. Each quarter reference is made to the University and Kappa scholarships, the tutorial and advisory systems.

Cultural activities on the campus and in Chicago are posted in the "Culture Corner" bulletin board. Each week a portion of the fireside meeting is devoted to announcements of cultural events and availability of tickets, and to another vital part of our program, "Morale Movement," dramatized by skits, poems and song.



A mutually popular and enjoyable event on the social calendar is Fathers' weekend. Activities include brunch at the house Saturday morning followed by planned entertainment, and group singing before the girls take their "important dates" to the Northwestern-University of Michigan football game. A banquet following rounds out a perfect day. Other events on the social calendar include: a Fall formal, football open houses, the Monmouth Duo with the Pi Phis, fraternity exchanges, an informal party Winter quarter, a Spring formal, and a Mothers' weekend.



# Housemother to housemothers

by DORIS M. SEWARD\*

Δ-Indiana

**H**ousemother to the housemothers! That is the role Mrs. Lena McDougale of Gamma Delta has been assigned since the beginning of the Purdue Housemothers Training School.

After a busy school year as housemother for the Purdue Kappas, Mrs. McDougale then assumes her staff position in the Purdue summer workshop in which over 100 women from all parts of the United States enroll to learn together about some of the aspects of housemother jobs. Some of the women have already been housemothers and others are considering the possibility of becoming one.

In the ten summers the school has met, more than a thousand women have come to know Mrs. McDougale. She recalls now that day in the late thirties when the Purdue dean of women, Dorothy Stratton, now national executive director of the Girl Scouts, asked her if the Kappa group would consider making their house available that summer for some sort of training course for housemothers. Mrs. McDougale found that these arrangements could be made, but by then Dr. Stratton's idea had been so happily received that the Kappa house was not large enough to accommodate the group who were interested in enrolling. Thus the project was transferred to a women's residence hall, and Mrs. McDougale went along too.

The group living aspect has come to be one of the most important arrangements of the school since the women immediately are a part of a demonstration laboratory of many of the situations which will be discussed in the school itself. They have roommates, ob-

serve a closing hour, have bull sessions, and plan group parties.

Mrs. McDougale serves as social sponsor, too, and at the first "house meeting" sees that officers are elected (including a fire captain!), that residence "rules" are explained, that the dining room procedures are presented. By the time the school officially comes into session under the leadership of Professor Helen B. Schleman, dean of women at Purdue and director of the Housemothers School, the group of women who the preceding day had never seen one another, by now feel almost like old friends.

Many of the women who come to the school are widows whose own children are grown and who find that they still want to make a constructive use of their time. The school makes no claim for being able to teach a woman how to be a housemother in two weeks time. There is no screening of applicants; the enrollment limitation is set solely by the capacity of the women's residence hall unit. But the women who decide to enroll in the first place often already have many of the personality attributes which most successful housemothers have. The school then provides information and materials relating to the various responsibilities of the job, including house management, food buying, social activity, and counselling. In general, the mornings are devoted to classes coordinated by the



Mrs. McDougale

\* Dr. Seward, assistant dean of women, Purdue University, has lectured at the Purdue Housemothers Training School for the past six summers.

(Continued on page 62)



# ***Introductions are in order***

## ***New appointments***

### ***Epsilon Province Director of Chapters***

Last year's Minneapolis alumnae association president Mary Elizabeth "Shelley" Sheldon Chaney, X-Minnesota, has been appointed to fill the unexpired term of the Epsilon province director of chapters. Shelley attended Mount Holyoke before graduating with a psychology major. Shelley's family consists of husband Bobb, a SAE from Dartmouth, who is vice-president and Minneapolis office-manager of Batten, Barton, Durstine and Osborne advertising agency, and three daughters, Sally, 16, Susan, 14 and Mary 7. Active in civic affairs Shelley is now a member of the Minneapolis board of Planned Parenthood and the Junior board of Northwestern Hospital. She is a past officer of the Minneapolis Junior League and Minneapolis Woman's club junior group. Shelley has been a member of the Colonial Church of Edina choir for a number of years and makes vacation money with a picture framing business.



### ***Iota Province Director of Alumnae***

Another alumnae association president, Jean Kronenberg Mears, I I-Whitman, of Portland, Oregon, is filling the unexpired term of Iota province director of alumnae. The Mears, Jean and Bill, a graduate of Oregon State, live in suburban Portland with their two daughters almost two and four. Before Jean's marriage she was active in Red Cross work and symphony society having served overseas during World War II with the Red Cross. Today Jean says her hobbies, outside of family and Kappa, consist of maintaining their half acre and canning fruit and produce from the garden. In the winter she spends those spare moments from the garden in sewing.



### ***Kappa Province Director of Alumnae***

Back into fraternity work is Claire Drew Forbes Walker, B II-Washington, of Santa Barbara, California, filling the gap as Kappa province director of alumnae. She was former Fraternity chairman of advertising, and is now a member of the public relations committee. Claire has her own public relations firm in Santa Barbara. She just recently became the national president of I A X, advertising honorary, which group had named her advertising woman of the year in 1952. Her daughter Joanne, graduated from the University of Oregon a year ago, now has her own programs on KWIL, in Albany, Oregon. Herbert Walker, Claire's husband, started in magazine publishing, worked with early movies in California including Mack Sennett, and now is with California State and writes a column "Jobology" which is published nationally. Claire, a former advertising and promotion manager of a large department store in Seattle for 13 years, was presented with a 10,000 hour volunteer pin by the U.S. Treasury department for service with War Loan drives.



### ***Pledge Training Chairman***

Until province convention this spring Helen Kinsloe, Δ A-Penn State, is spending all her spare time from teaching bacteriology at Penn State, on Kappa affairs, still fulfilling her job as Beta province director of chapters and acting as finance adviser to Delta Alpha in addition to her new assignment as chairman of pledge training. Helen, a member of the State College association, formerly served on the board of the New York association and worked with the New York Service Women's Center during World War II. Her hobbies of sewing, travel and photography are lost arts at the present time.







### **Chairman of Fellowships**

Miriam Locke,  $\Gamma$  II-Alabama, former scholarship chairman, Mu province president and National Panhellenic delegate, has become the new chairman of fellowships. Miriam holds her A.B. and M.A. from Alabama and a Ph.D. from Northwestern. She is a member of the University of Alabama faculty and has been active in the University and Kappa life of the community having served as president of Phi Beta Kappa group, adviser to the chapter (at the present holds a triple advisory position) Mortar Board and Alpha Lambda Delta. She also has done literary research at Northwestern, Yale and the British Museum Library. When asked about hobbies, Miriam admits that Kappa would stand first if it had not become a full-time occupation. Others would include travel, 18th century literature, collecting house plans and recipes she never has time to use.



### **Chairman of Graduate Counselors**

Former graduate counselor, field secretary and chairman of chapter councils, Marjorie Matson Converse,  $\Gamma$   $\Delta$ -Purdue, has a wealth of background to assume her new position as chairman of graduate counselors. In addition to the other Kappa jobs Marge served as assistant to the director of chapters last administration. Marge's husband, Wiles, is an industrial engineer for Argus Camera Company in Ann Arbor, Michigan, while Marge, herself is a member of the faculty at Michigan State Normal College.



### **Field Secretary**

Ruth Wierman, B M-Colorado, of Denver, is the Fraternity's newest globe trotter. After serving her chapter as president her Senior year, Ruth went to work for United Air Lines in Denver as a reservations clerk. She had a three month trip to Europe and then worked as a receptionist in a hospital and a doctor's office. When in Denver Ruthie is busy in alumnae association and Denver Junior League activities.



### **Council Assistant**

Former traveling secretary Joyce Thomas,  $\Delta$  T-Georgia, now a teacher of English in a private school in Atlanta, is assisting the director of chapters this year as her assistant. While in college Joyce was a member of Phi Beta Kappa, Phi Kappa Phi and graduated *cum laude*. Joyce works with the University of Georgia chapter as pledge adviser, is a member of the house board and rush steering committee. Aside from her busy activities she spends her few spare moments in her favorite hobby of photography.



# Hearthstone board



## **Josephine Yantis Eberspacher, Chairman**

As fraternity vice-president last administration, Josephine Yantis Eberspacher, B M-Colo-rado, had the Hearthstone under her jurisdiction. So with this background Jo has assumed the chairmanship of the board of directors long held by gracious, efficient Florence Burton Roth who felt she could no longer carry the duties incumbent with the job. Jo received her master's degree from the University of Oregon and taught in Fort Morgan, Colorado, Fort Collins, the University of Colorado, and the University of Michigan before her marriage to Ed Eberspacher, lawyer and a member of Kappa Delta Rho from the University of Illinois. They have two sons, Chris and David, 5 and 2 and a daughter JoAnn, 3. In addition to her many Kappa activities in Shelbyville, Illinois, Jo finds time to work with the American Legion and Veterans of Foreign Wars auxiliaries, Red Cross, PTA, adult education board and Community Chest board of directors. Jo also has served as Epsilon province president and was an adviser to Beta Delta chapter while in residence in Ann Arbor.



## **Catherine Kelder Walz, Adviser**

Catherine Kelder Walz, B Δ-Michigan, has added the advisory job of the board of trustees to her Kappa activities as chairman of housing. Prior to her marriage Kay taught French and Spanish in Sturgis, Michigan. Husband, Bill, is president of the Ann Arbor Federal Savings and Loan. He was a Σ N at the University of Michigan. Bill, Jr. now is a Junior at Northwestern and a member of Alpha Tau Omega. Kay received one of the first distinguished alumnae awards from the Michigan alumnae council for her work as chairman of the project to secure Henderson House, a cooperative house, built by funds given by Michigan alumnae clubs. Under her guidance the committee purchased, remodeled and set up the living and working techniques for a house that is unique on the Michigan campus. For 25 years Kay has been treasurer of Beta Delta's house board and served as their finance adviser. She has served on the special finance study and Hearthstone study committees of the Fraternity during recent years in addition to her chairmanship.



## **Alice Watts Hostetler, Member**

Alice Watts Hostetler, I-DePauw, has an ability to combine Kappa, business and community activities. Since the death of her husband a number of years ago, Alice has been president and manager of their firm, the Arlington Millwork Co. Following her graduation from DePauw she received her M.A. in economics and sociology from Maryland. A free lance feature writer and member of Θ Σ Φ, she was at one time on the staff of *American Forests* magazine. Mrs. Hostetler is a member of the board of directors of the Maryland Mental Hygiene society, has served on the Governor's commission on juvenile delinquency and at one time did social work at the Maryland welfare board. In addition she is a former president of the Montgomery County and Maryland Leagues of Women Voters and is vice-chairman of the Democratic state central committee of Montgomery County, Maryland, as well as chairman of the affiliated clubs of the Woman's National Democratic club.



## **Mary Jim Lane Chickering, Member**

In spite of the myriad duties incumbent upon Brigadier General Edwin L. Chickering's wife at Langley Field Air Base, Mary Jim Lane Chickering, Γ N-Arkansas, still finds time to work for Kappa. Mary Jim has been active in Fraternity work since serving her chapter as president. She was Fraternity vice-president, Army and Navy chairman, social chairman of convention for the past two conventions, council representative for the colonization project at the University of Georgia, chairman of pledge training, and worked in the Fraternity Headquarters while Chick, her Lehigh X Ψ husband, was overseas during World War II. In addition to her duties as an Air Force wife, the Chickering's young son comes in for his full share of attention.





WASHINGTON 4, D. C.

March 25, 1955.

DEPARTMENT OF ACCOUNTS

Mrs. William H. Sanders  
1818 37th St. N.W.  
Washington 7, D. C.

Dear Madam:

We acknowledge with thanks your recent request to establish a charge account with our store.

There is enclosed a blank application form; kindly fill in and return it to us in order that we may have a complete record of your account.

You may be assured that upon receipt of same, your application will be given prompt attention.

Very truly yours,  
FRANK R. JELLEFF, INC.

*M. Gannon*  
Department of Accounts



# Mr. Stonehouse



Mr. Stonehouse, Chairman,

Dear Sir,

March 25, 1938.

I have the honor to acknowledge the receipt of your letter of the 23rd inst. in relation to the account of the 1937-38 season. I am sorry that I cannot give you a more definite answer at this time, but I am sure that you will understand my position.

Very truly yours,  
Wm. H. Stonehouse

Wm. H. Stonehouse, Chairman

I am sorry that I cannot give you a more definite answer at this time, but I am sure that you will understand my position.

There is enclosed a blank application form; kindly fill in and return it to us in order that we may have a complete record of your account.

You may be assured that upon receipt of your application will be given prompt attention.

Very truly yours,  
Wm. H. Stonehouse

Department of Accounts

Very truly yours,  
Wm. H. Stonehouse

I am sorry that I cannot give you a more definite answer at this time, but I am sure that you will understand my position.



# **"Who's Who"**

## **Beatrice Larsen Vincent, Member**

Beatrice Larsen Vincent, Δ E-Rollins, lives in Winter Park, where her husband is director of publicity at Rollins, and her daughter, Donna, is a senior in the Winter Park High School. For five years Mrs. Vincent was correspondent and feature writer for the Orlando daily paper and served as publicity chairman at various times for the AAUW, the Garden Club, Woman's Club, PTA, Cotillion Club and Hearthstone. During 1936-44, while living in Quincy, Massachusetts, she was a member of the Boston alumna association. She was a secretary of the Quincy Junior Welfare League, and an interviewer for the Elmo Roper public opinion polls. Since returning to Winter Park in 1944, she has been personnel and membership adviser to the Delta Epsilon chapter, president of the alumnae association, a delegate to the 1952 convention, and publicity chairman for the Hearthstone local board.



## **Lillian Wilmott Fishback, Member**

Lillian Wilmott Fishback, Δ E-Rollins, is a native Orlandoan. She has the distinction of being one of the three founders of Kappa Epsilon, local, which later became Delta Epsilon chapter. Mrs. Fishback was secretary and treasurer of the Winter Park alumnae association and was a member of the board of directors who worked with the architect on plans for the Hearthstone. For 15 years she has been president of D. E. Fishback & Sons, Inc., a pump and irrigation concern in Orlando, and assistant manager of the Tremont Hotel. In addition to business duties, she has been prominently identified with social and civic activities in the city as a member of the Rosalind Club, the First Presbyterian Church and the Memorial Hospital Association. She has one married daughter, Blanche Fishback Galey, two young daughters Jean and Peggy and two sons Edward and Davis.



## **Mary Jo Stroud Davis, Member**

Mary Jo Stroud Davis, T-Northwestern, has been chairman of the local board of the Hearthstone since 1953. At one time in her career she was a singer with Harry Sosnik and Sophie Tucker, now she has become a Florida rancher in true cowboy fashion and dons blue jeans and a checkered shirt to ride the range rounding up her Brahma bulls. Mary Jo, in spite of two young sons, Jody and John, and husband Bill, is never too busy to find time for frequent visits to the Hearthstone for committee meetings and to supervise jobs to be done. In addition, she assists her family in operating the Stroud Drug stores, operates a downtown Orlando motel and is active in the Orlando Day Nursery, Community Club, PTA and Presbyterian Church. She has been an adviser for several years to the Rollins Chapter and is a past president of the alumnae association.



## **Jean Newmaker Tuthill, Member**

Jean Newmaker Tuthill, Δ Θ-Goucher, was born in Warren, Pennsylvania, where she attended Warren schools. After her marriage to Frank F. Tuthill in 1937, she lived in Rhode Island, Pennsylvania and Virginia where she was a member of the Roanoke alumnae group. Since moving to Orlando, the Tuthills, with their 12 year old daughter, Susan, enjoy fishing trips in Florida waters. Her hobby is sewing, and her principal activities include PTA, Little Theater and Girl Scouts, in addition to serving as secretary of the Winter Park alumnae in 1951, and now on the Hearthstone board.





# *She out-Kappas the Kappas*

by DOROTHY REASONER RISSE

M-Butler



Mrs. Bryson, at the reception given in her honor last year. At her right is Carol Wharton, B T-Syracuse, chapter president.

**I**t was "Mrs. Bryson's Week" at the Beta Tau chapter house last April when Syracuse Kappa alumnae and Beta Tau undergraduates, members of the Syracuse University faculty, deans, and Panhellenic friends gathered to say goodbye and thank you to Mrs. Florence Bryson for her loyal service and devotion.

Mrs. Bryson announced her retirement last spring after 18 years as house director, during which time she was head resident, liaison with the University, confidante, adviser and friend to more than 400 wearers of the key. Syracuse dean of women, Marjorie C. Smith, paid tribute to Mrs. Bryson in these words:

"It is impossible to measure the contribution you have made to our campus, and therefore we cannot find adequate expression for what you have done. The realm of your influence has not been confined to KKG, for the effects have been felt across the campus and your leadership recognized among the head residents.

"You have demonstrated your business acumen in the running of the house for the chapter in winter, and for conferences in the summer. Although you have managed a house very well, your real contribution has been in the area of human relations with undergraduates, alumnae, and professional folk who have returned to your house summer after summer. A basic trust in people, combined with infinite patience and a willingness to listen, has won for you many friends. A constant awareness and sensitivity to the problems of

people and their needs, a wonderful sense of humor, a ready answer and a quick wit have endeared people to you. Your calm, easy manner and good judgment in meeting all situations have given people confidence in facing their own emergencies. The graciousness and high standards you have demonstrated and taught will be remembered by all the girls you have had in the chapter.

"May you have many happy memories of your experience here."

"Brysie," as she has affectionately been known on campus, came to Syracuse from Cleveland where she had served as executive secretary of the women's committee of the Cleveland Symphony Orchestra, and had arranged some of the first children's concerts there. In addition to managing the house during the regular university year, Mrs. Bryson opened the Beta Tau house for educators attending summer conferences on the S.U. campus. Since her retirement, she is living with her family, which includes even great grandchildren, in Limerock, Connecticut.

Beta Tau activities were hostesses at a large reception in Mrs. Bryson's honor at the chapter house on the evening of April 28 to which faculty members, house directors, and undergraduate and alumnae representatives of campus fraternities and sororities were invited.

The "Kappa family" honored Mrs. Bryson at a formal dinner the next evening. It was a real Kappa reunion. Many alumnae now living outstate and away from central New York returned. The program included the presentation of a purse to Mrs. Bryson from the Beta Tau alumnae along with a memory book containing pictures and signatures of the Kappas she had known in her 18 years at Beta Tau.

In addition to the parties for her, Mrs. Bryson received many letters from former students at the university, and Syracuse newspapers and local columnists noted her service to the university and to the chapter.

The respect and love held for Mrs. Bryson by all who knew her was best expressed when someone said of her "She has out-Kappaed the Kappas at every turn."



***Getting to know you***



***Kappas of Theta province***



# Down Theta province way

by MYRTLE OLIVER ROEVER

*Theta province director of alumnae*

**T**heta province covers more than 300,000 square miles. Kappa alumnae living in the three states of Texas, Oklahoma and Arkansas are widely scattered, but present a picture of vital activity in projects and interest in the seven chapters located in the province. There are 36 groups of organized alumnae. Arkansas has one association and five clubs, while Oklahoma has two associations and nine clubs and Texas eight associations and eleven clubs.

Arkansas is noted for the beauty of the Ozark Mountains. The state is one of the top producers of cotton. Other important crops include wheat, corn, oats, potatoes, hay and fruit. Arkansas also has a wide variety of forest wealth and produces much of the bauxite in the country. Other important minerals are petroleum, coal and natural gas.

Little Rock, the state capital and largest city, is in the middle of the state. Here is the only alumnae association of the state, originally organized June 1, 1922 and reorganized in 1928. Veda Freuler Carrol,  $\Gamma$  N-Arkansas, leads the group of 15 active members. Last year Jean Stevenson Healey,  $\Gamma$  I-Washington U., opened her home as the center of the Easter basket construction operation. Approximately 200 baskets were made by hand, trimmed with rosebuds, violets and forget-me-nots, and marketed in

specialty shops. A display was arranged by the Junior League on their TV children's hour. From the proceeds of the sales of the baskets, priced at \$1.50 each, three Girl Scout camperships were awarded.

Fort Smith, in the Ozarks on the Arkansas-Oklahoma border, has a club chartered February 26, 1948, of 17 members with Marolyn Herbert,  $\Delta$  II-Tulsa, as president. Their main interest is in the rush activities of Gamma Nu chapter at the University of Arkansas.

Fayetteville, a pretty college town in the mountains of north central Arkansas, is the home of Gamma Nu chapter. The club organized February 3, 1930 and reorganized April 19, 1948 now has a membership of 13. All members work with the chapter and serve as advisers. Joan Bell Brockett,  $\Gamma$  N-Arkansas, is the president. The wife of the president of the University, the dean of women and several faculty members are active in the club.

The Hot Springs of Arkansas are the only Government-owned and operated hot springs in the United States. They are included in the Hot Springs National Park portion of the Ouachita Mountains. The city of Hot Springs, a nationally known health resort, is on all sides of the park. In the city Kappa has an alumnae club of nine members who work on all community projects and devote a great

*Little Rock alumnae Coralie Shafer Weiss, B A-Illinois, Veda Freuler Carroll,  $\Gamma$  N-Arkansas, Mary Schilling Owen,  $\Gamma$  N-Arkansas, Veta Sherrill Dickinson,  $\Gamma$  N-Arkansas, and Nelda Hickman Horrell,  $\Gamma$  N-Arkansas, fashioned frilly Easter baskets from coffee cans, wire clothes hangers and crepe paper for their successful money making venture—a bride ordered six for rice baskets for her junior attendants.*





deal of their time to rushing for Kappa. Mary Sue Darneal Graham,  $\Theta$ -Missouri, is president of the group chartered September 7, 1948.

Two new clubs formed in Arkansas this fall are El Dorado with 12 charter members under Nancy E. Lake,  $B \Xi$ -Texas, as president and the Harrison club, formed with nine charter members and Ruth Kirby McCoy,  $\Gamma$  N-Arkansas, president. El Dorado was chartered September 13, 1954 and Harrison October 23, 1954. Both clubs have plans for an active year and hope to interest Kappas in nearby towns in becoming members and want to see Kappa represented in their community.

The vast rolling plain of the state of Oklahoma stretches from the treeless western plains to the heavily wooded mountains of the Ozarks in the east. Two territories were combined to make this state—Oklahoma and Indian Territory, which was the home of the Five Civilized Tribes—Cherokees, Creeks, Choctaws, Chickasaws and Seminoles. The more than 30 Indian tribes in Oklahoma compose almost one-fifth of the Indian population of the United States. Oil is a big industry in the state, although production is heavy in natural gas, zinc and natural gasoline. The state is a heavy producer of livestock and poultry and important crops are winter wheat, cotton, corn, oats, rye, barley, grain sorghums, peanuts, hay and broom corn.

Oklahoma has two very active associations, Tulsa and Oklahoma City. The Tulsa association headed this year by Gladys Ross Carlson,  $\Gamma$  A-Kansas State was organized June 17, 1922. Tulsa is a very prosperous and busy city. Oil and firms connected with this natural resource form the most active industries.



*Caught by photographer Mary Elizabeth Edwards Good,  $\Delta$  II-Tulsa, at a morning neighborhood coffee in Tulsa are June Hudson Whitaker,  $\Delta$  II-Tulsa, Betty Fraker Crouch,  $B \Delta$ -Illinois, Betty Bailey Oliver,  $\Delta \Sigma$ -Oklahoma A & M; Gladys Ross Carlson,  $\Gamma$  A-Kansas State; Pamela Wilson, granddaughter of Gladys Hensley Engle,  $B \Theta$ -Oklahoma and daughter of Frances Wilson; Mary Singleton Wamsley,  $I$ -DePauw, seated; and Sammy Cunningham Bledsoe,  $\Gamma$  X-George Washington, Jane Gutelius Vavra,  $\Theta$ -Missouri; Bonnie O'Connor Minshall,  $B \Theta$ -Oklahoma; Frances Engle Wilson,  $B \Theta$ -Oklahoma, Dorothy Ohmart Wright,  $\Gamma$  B-New Mexico.*

There is also a large bomber plant situated there. The Kappas are very active and well established, with a membership of 107. Last year the association made and gave initiation robes to Beta Theta chapter at the University of Oklahoma. They also give active help to Delta Pi chapter at Tulsa University by serving as advisers.

Part of the proceeds from their annual project, Holiday Houses, is given to the Tulsa chapter and also to Delta Sigma chapter at Oklahoma A. & M. The Holiday House project in Tulsa has been very successful, with four houses presented and over 1,000 tickets

*Norman alumnae admire the silver punch cup collection which they have started for the Beta Theta chapter house. Included in the group are Pat Neale,  $\Delta \Sigma$ -Oklahoma A & M; Beverly Berry Disney, Betty Evans, Gladys Guillot Eddleman, Ernestine Eddleman Ruggers, Mary Christian Froneberger, all  $B \Theta$ -Oklahoma.*





Mary McWhorter Shrader, B Θ-Oklahoma and M. Ann Norton Walker, Γ Z-Arizona admire some of the fascinating antiques on Kappa day at one of Oklahoma City's antique shops.

sold. They also sold Christmas candles and aprons. This fall their projects have been a rummage sale, White Elephant sale and a knife sale.

The proceeds support the Babies' Milk fund and they are interested in a plan to support the Hearing Clinic by supplying hearing aids for children unable to buy them. The Tulsa association has also held neighborhood coffees this year. Groups of 20 members meet in homes in four different parts of the city for a social gathering. A Christmas coffee honoring actives home for the holidays is an association tradition and plans are afoot for a large spring rummage sale.

Oklahoma City, whose association was organized July 25, 1916, in the state capital, is a city of 300,000 in the center of the state. Oil and cattle are the principal businesses of the city. The Kappa group is friendly and progressive and gives their support to the three chapters of the state.

In alternate years a Holiday House tour serves as the big money making project. Each alumna participates in the tour by making Christmas decorations for the interior and exterior of the four homes featured. Tickets are sold to the public and all decorations are sold. The alumnae dance held the other year usually draws around 500 not only from Oklahoma City but from distant points. Marjorie Adams Upsher, B Θ-Oklahoma was this

year's chairman. In addition to the dance a doll dressed for Christmas, was displayed in different shops throughout the city for the purpose of selling tickets. Since 1951 the group has worked with the Speech and Hearing clinic and contributed \$1,500 toward buying needed equipment.

Serving as sales women at an antique shop and a spring house tour to entertain feminine members of a large convention held in the city have proved other profitable ways of adding to the treasury.

Programs for meetings this year include talks on Christmas flower decorations, Do It Yourself, hat styling, a fashion show and a book review.

Ardmore, an oil and farming community, with a population of 18,000, has an alumnae club of 16 members. This club, chartered as an association December 20, 1927 changed to club status July 16, 1945. Members support the Norman, Oklahoma chapter and give them gifts for the house and assist with rush by giving parties throughout the year. Ann Thompson White, B Θ-Oklahoma, is president of the group. Two members, Melville Cannon Turnbull and Gail Wilkinson Coffey, both B Θ-Oklahoma, are members of the Beta Theta house board at Norman.

Bartlesville, in the northern part of the state, received an honorable mention club award last year. Twenty-seven Kappas form an active club chartered December 20, 1945. For a community of 20,000 Bartlesville has the cosmopolitan air of a large city, but the atmos-



Preparing for the Christmas ball in Muskogee to raise funds for their dental program are Betty Jones, Γ N-Arkansas, Geraldine Logan McKinney, B Θ-Oklahoma, and Katherine Fast Eddins, B Θ-Oklahoma.



phere of a small town. With the home office of a major oil company, a large construction company and numerous manufacturing companies, there is a constant shift of personnel. The first Kappa mother's club was formed in Bartlesville this year after seven girls pledged at Oklahoma A. and M. and three at Oklahoma University. Lynn D. Lathem Chaney, Δ I-LSU, as president, leads the group in their work with a club for boys where they serve as tutors and supply food for special occasions. They have also provided for dental care, haircuts and clothing as needed.

A small club of 16 members is in Enid. Organized October 20, 1945, it has been active in work for the chapters in Oklahoma. Ruth Whitson Freeman, B Θ-Oklahoma, is the president.

Guthrie-Stillwater, whose activities center in Stillwater, the home of Delta Sigma chapter at Oklahoma A & M, is a club of 16 members. Their charter was issued March 20, 1946. Since the club is small all members have served in several capacities—officer, chairman or chapter adviser.

Miami, close to the Kansas-Oklahoma border, is a small club of seven Kappas, chartered June 24, 1953. Mary Bush Chestnut, Γ X-George Washington, their president, supervises the club's main work, rushing for the University of Tulsa and Oklahoma University.

The Mid-Oklahoma club, drawing its membership from Chandler, Shawnee, Holdenville and Seminole, originally chartered Feb-



*Houston Press Photo*

*Ingenuity in decorations is what sells tickets for the Houston Pilgrimage. Admiring the work are Elizabeth Partridge Smoot, Δ I-LSU, Statira Butman Mitchell, B Δ-Michigan, and Alice Butman Bellows, B O-Newcomb.*

ruary 2, 1941 and re-established May 31, 1946, has been active in all Kappa services. The 12 members, led by their president Mary Olive Marshall Jarrett, B Θ-Oklahoma, hold rush parties at Christmas and Easter. During the Christmas season they raffle a doll to raise money for Beta Theta chapter. They have contributed the silver service prize for the highest scholarship chapter average in Oklahoma, awarded at State Day in the spring.

Muskogee, a city of 30,000 in East Oklahoma, was organized May 23, 1945 and has a membership of 25. Their summer rush secured six pledges for the Oklahoma chapters. The list of this club's community activities is both staggering and noteworthy. Their outstanding community effort is the annual Kappa charity ball, held this year on Christmas night. Proceeds from the dance go to the Indigent Dental Care fund which pays for dental treatment for school children who cannot otherwise obtain it. Last year 1,204 dental inspections were made and 139 treatments provided. The project was conceived in 1935 to fit a community need by Emily Smith McDermott, B Θ-Oklahoma, Katherine Fast Ed-dins, B Θ-Oklahoma, Kathryn Crew Arnold, B Θ-Oklahoma, Margaret Crew Reeder, B Θ-Oklahoma, and Josephine Hagerman Martin, PΔ-Ohio Wesleyan. In 1950, P.T.A. and civic groups made contributions which were



*Dallas bazaar chairmen Sally Temple Barnes, Barbara Russell Miller, Sara Morrison Shaw and Patsy Harris Moore, all Γ Φ-SMU, collect some of the gay display items for their Christmas bazaar.*



matched up to \$500 with State funds.

In Norman, the home of Beta Theta chapter at the University of Oklahoma, the club membership averages from 12 to 14. This club, chartered March 10, 1947, has many personnel changes as Kappa wives come and go with their student and faculty husbands. The club has active participation in house and advisory board work for the chapter. Norman has started a collection of silver punch cups for Beta Theta and, with the help of other alumnae groups, have made new initiation robes. Currently the association is bringing the chapter membership file up to date. With Gladys Guillot Eddleman, B Θ-Oklahoma, as president the club has contributed to the University one graduate woman's scholarship, administered by the dean of the Graduate School. Funds for this scholarship come from the annual Christmas doll sale. The club also helps with the rehabilitation of patients at the State Mental Hospital by contributing phonograph records, books and magazines to the hospital recreation center. Betty Evans, B Θ-Oklahoma, chairman of undergraduate scholarships is an active member of the club.

Ponca City's club, chartered on October 20, 1945, has nine active members in a community of 21,500. Ponca City, the home office of the Continental Oil company, is the site of the famous statue of the Pioneer Woman. The alumnae group helps sponsor a Panhellenic luncheon and fashion show each fall. The proceeds go to a school for spastic children.

Texas, the Lone Star state, covers the largest percentage of the province mileage, one association being 500 miles from any Kappa group. Texas is mountainous in the west, a plain in the northwest, a great prairie in the central portion and low-lying near the Gulf of Mexico. The state has a great diversity of climate, ranging from temperate to sub-tropical. Texas is the leading cotton growing state and also leads in peanut production and citrus fruits. The state tops all in petroleum production with a huge output and also has an immense amount of natural gas, sulphur and coal. It also ranks first in beef cattle, sheep and mules.

The associations and clubs of the state help

the three Texas chapters and work in their respective communities. A new club in Abilene was chartered November 15, 1954.

The "Panhhandle" section in the northern tip of the state is so called because it appears on the map to form the handle of a giant pan. There one finds one association, Wichita Falls, and two clubs, Amarillo and Lubbock.

Wichita Falls, near the Oklahoma border, is a rapidly growing city with oil, cattle and wheat as the principal businesses. The association originally was organized June, 1926 but was reorganized after a period of inactivity November 18, 1940. The 28 members participate actively in rush and social meetings. Each year the group gives a luncheon to raise funds. Each association member takes a covered dish to serve 10 people at the luncheon. Also every member brings two guests with her. The price of the tickets, \$1.00 each, goes to the philanthropy picked each year by the association. Each Christmas vacation the association holds a luncheon for all new pledges from Wichita Falls. Each girl speaks briefly about her school and chapter.

Amarillo has a club of 18 members and was organized March 30, 1945. Alma Faye Cowden Madden, B Ξ-Texas, is the president. The members are interested in rush work for the three Texas chapters and provide a Girl Scout campship.

The club in Lubbock was chartered May 1, 1950, and has a membership of 55. Lubbock, known as "The hub of plains" is a concentration point for all south plains cotton and is the largest inland cotton market in the world. Oil also contributes a large part of the income of the city, whose population is 112,000. Members of the club help the Texas Tech chapter as advisers.

This year they are sponsoring two talks by Rosalie Furry Doolittle, Γ B-New Mexico, co-author of the book *Southwest Gardening*. The proceeds from this project, under the leadership of Guida Wilson Dunn, Δ Ψ-Texas Tech, will go to Kappa's scholarship program. Betty Lee Lindsey Baker, Δ Ψ-Texas Tech, is their president.

Western Texas flanked by New Mexico and Mexico is a prosperous ranching and oil section. In West Texas are one association, El Paso, and two clubs, Midland and San Angelo.





Austin alumnae in conjunction with other Texas alumnae groups fashioned props and costumes for the successful Alice in Wonderland rushing skit at the University of Texas.

1. Connie Middleton Coffeen, B Z-lota, and Margaret Scarborough, B E-Texas, members of the Austin association, model the King and Queen of Hearts costumes, two of the 10 costumes made by the Houston alumnae.

2. Ann Williams and Alethea Elliott, display the work of Austin and Temple alumnae in their Big and Middle-sized Alice costumes.



3. San Antonio made the March Hare worn by Frances Spires and the White Rabbit worn by Jo Ann Role, pictured with Houston's Tweedle Dee worn by Paula Powers.



4. Temple outfitted the Mad Hatter displayed by Gladys Bon-durant.



5. Tweedle Dee, Paula Powers and Tweedle Dum, Paula Jacobs, show the work of Houston alumnae.

6. Marion Sevier, wears Houston's Knave of Hearts outfit.

All not identified are B E-Texas active members.

El Paso furnished a pink tulle table cloth while Dallas, San Angelo, Tyler, Waco, Wichita Falls, Beaumont and Bryan sent hurricane lamps. Fort Worth made the Cheshire cat and Galveston the mock turtle. Port Arthur wired flowers. Hand painted name tags were prepared by Midland and Baytown furnished a costume.





The El Paso association was chartered March 31, 1932. Martha Humbert Riley,  $\Gamma$  K-William and Mary, is president of the 30 member group. The proceeds raised from sponsoring a local photographer, in return for 15 percent of his profits have gone to national philanthropies and to the Child Guidance Clinic in El Paso. The group also donated a set of *Childcraft* books to the Southwestern Children's Home.

Midland, an oil and ranching town rising suddenly out of the flat plains, has a club of 27 members chartered February 11, 1946. The group gives active support to the chapters of the state.

San Angelo was granted a club charter December 26, 1944. With Katherine C. Ball,  $B \Xi$ -Texas, as president, this club is active in giving rush parties and making recommendations to the Texas chapters.

On the prairie in the central part of the state is Austin, one of the oldest and most beautiful cities of the state, the state capital and home of Beta Xi chapter at the University of Texas. Chartered on November 20, 1929, this association has 97 active members. The group helps Beta Xi with all phases of their work. Last summer Austin alumnae sponsored Operation Summer in helping Beta Xi prepare for the fall rush week. Under the direction of the Austin association the other alumnae groups in the state helped make costumes and props for the Alice In Wonderland rush party. The programs for the Austin meetings include talks by professors from the University of Texas faculty, the conductor of the Austin Symphony and representatives from all community projects. Martha Woods Covert,  $B \Xi$ -Texas, is president.

The Kappa Kitchen, a food sale each spring, is the money raising project. Funds received from this last year purchased a radio and TV set for the polio ward of the Travis County association for Infantile Paralysis, gave help to the Austin state hospital and provided funds of Kappa philanthropies.

San Antonio, an old, picturesque city in central Texas, has an association of 90 members. Madelyn Plant Powell,  $\Gamma$  Z-Arizona, is president of the group, chartered February 2, 1937 after original organization on September 30, 1928. Each Christmas season the

organization holds an auction following a cocktail-dinner party to aid the Children's Shelter and Kappa's scholarship fund.

In eastern Texas, another large oil and cattle center, are three associations, Dallas, Ft. Worth and Waco, and one club, Tyler.

The Dallas association of 191 members, chartered May 6, 1919, is a reflection of fast growing progressive Dallas, booming banking, financial and marketing center of Texas. Marilyn Lou Meyer Ford,  $\Gamma \Delta$ -Purdue, is president. New members of the association from other cities belong to the Newcomers bridge club headed by Helen Schaupp Kingsolver,  $\Gamma \Delta$ -Purdue. This group, meeting once a month for dessert and bridge, has doubled its membership in the past year. A highly worthwhile method of bringing new and inactive members into the association has been found by sending personnel blanks to each member. On this she lists the offices held as an active and alumna and her special talents and interests. This information is invaluable to the executive board in assigning members to jobs where they can serve effectively.

Last year the association held a white elephant sale which included not only a miscellany of items from attics and closets but a group of representative gifts collected from Kappa friends in distant countries and states which were sold as surprise packages. Barbara Sims Paschall,  $\Gamma \Phi$ -SMU, assembled the merchandise and conducted the silent auction bidding.

This year the group made over 600 Christmas arrangements for tables, doors and mantels for the Christmas bazaar. Each active member worked on one of the committees under the direction of Sarah Morrison Shaw,  $\Gamma \Phi$ -SMU. Donations included a jewel-encrusted stole donated by the mother of Marilyn Peterson Andrews,  $\Gamma \Phi$ -SMU, and a pastel portrait to be painted by Lucretia Donnell Newman,  $\Gamma \Phi$ -SMU.

The community service project last year was working with the children at the Cerebral Palsy clinic. While many will continue their work this year, the group spends an afternoon a month rolling bandages for the American Cancer society. Frances Cain Blanton,  $B \Xi$ -Texas, project chairman has

*(Continued on page 61)*



# Alpha province extends to three countries

by CATHERINE ALT SCHULTZ

*Alpha province director of alumnæ*

**A**lpha province is the extreme North-East section of the Kappa domain. No other province can boast that it extends to three different countries—United States, Canada, and England.

Alpha covers New England from Massachusetts to Maine. It covers all of New York State except Metropolitan New York. Three Canadian groups are included—Toronto, Ottawa and Montreal. And across the Atlantic lies London, England, where a flourishing Kappa association exists.

This far-flung province should show great diversity, but strangely enough, there is a blending and a leavening at work which has created a feeling of friendliness and mutual affection. During the war, other province groups sent food packages to London, England, so that in spite of rationing, the group could continue enjoying Kappa fellowship and hospitality. In turn, London gave these packages to a needy Kappa. As a result, the

Rose McGill fund became interested and cared for the Kappa until her death.

Another example of this spirit of caring is the fact that though there are only eight active chapters in the province, several clubs and associations have adopted chapters and try to help them in many small ways.

There are 20 alumnæ groups in the province and they range in size from Middlebury with six to Syracuse with 100. They range in age from the very first chartered group in the country, in Boston, to the very newest, not yet installed and also in Boston, the Commonwealth club.

This section of the East is highly populated, with small towns and large cities. Many of these small towns have scattered Kappas, not enough to form an alumnæ group but enough to set up a network of interested alumnæ to handle recommendations under the direction of a state rush chairman.

The Boston area, rich in tradition both historical and Kappa, supports three groups:

*Boston:* Chartered 1918: Membership 20.

This is the oldest Kappa alumnæ group in the country. Its beginnings go back to about 1887 when a group of Phi alumnæ met and formed the first Kappa alumnæ association. The list of its members over the years includes many distinguished people and a large proportion of the Kappa "Greats." Its membership is drawn largely from Phi though any Kappa is welcome. Phi chapter is still one of the chief interests.

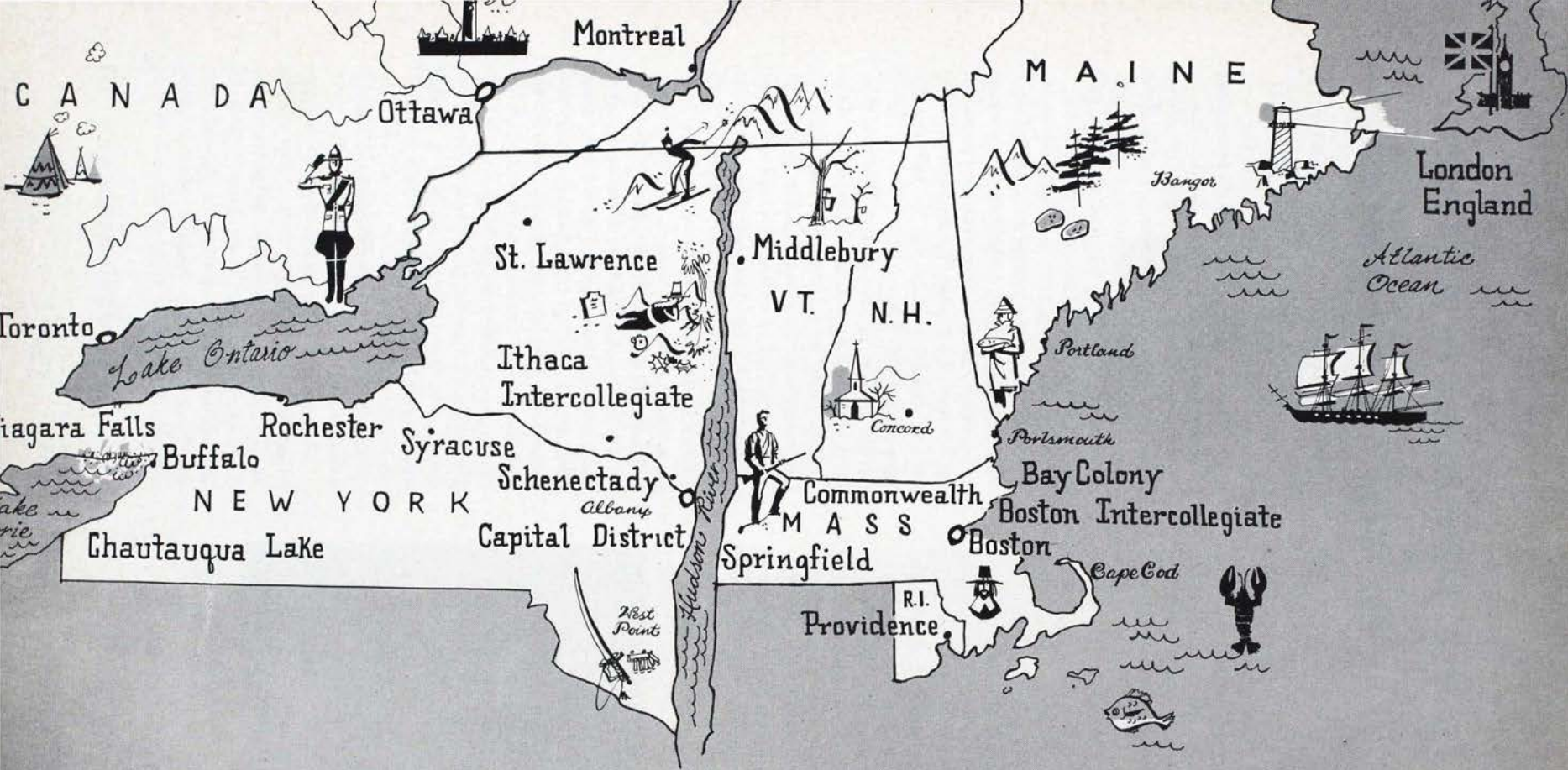
*Boston Intercollegiate:* Organized May 5, 1924: Membership, 70.

This group is composed of those Kappas other than Phi alumnæ who live in the Boston area. Two council members, Edith Reese Crabtree and Mary Turner Whitney are included in its roster at the present time. Much of the local interest of this group centers around the Girls' Clubs of Boston.



Elizabeth Ling Reamer, I P-Allegheny, speaker at Rochester, New York's Founders' Day meeting. Mrs. Reamer is well known for her outstanding work with the Gray Ladies unit at the Rochester State hospital.





***Getting to Know You, Alpha Province...***



Collecting clothing, toys, books and Christmas gifts for the club is their contribution. Many of its membership volunteer time and service to the Bay State Rehabilitation clinic. This group shares the responsibilities of the advisory board to Phi chapter with both the Boston association and the newly formed Commonwealth club. Boston Intercollegiate's money-making project for the year is "Operation Nuts," in the hands of Jess McNamee Bell, Δ-Indiana. The program of the association for the year, chairmanned by Ruth Gregg King, Δ Γ-Michigan State, center around community activities—family service, education for family living, films on milk for the city, Pittsburgh glass, etc.

*Commonwealth:* Chartered October 25, 1954: Membership, 27.

Newly chartered, this club already has 27 enthusiastic members. For the past several months, the group has been interested in aiding Phi chapter of Boston University with a scholarship fund and money for furniture. In the spring a fashion commentary, presented by one of Boston's large department stores and a tea was held in Newton, the proceeds of which were donated to Phi for chapter furniture. Gloria Van Ham Cotting, Φ-Boston, was chairman of the affair.

Because one of its members, Ruth Seed Signor, Ξ-Adrian, is director of the Girls' Clubs of Boston, toys and gifts are collected for these needy girls at the annual Christmas meeting. Programs included talks by Hazel Hotchkiss Wightman, Π<sup>A</sup>-California, on her tennis career, a talk on Robert Frost by a close friend of his, and a convention report from Marion Tombaugh. Future plans include a book review and a raffle drawing.

Each year the Boston Kappa groups alternate in planning and organizing the New England Spring luncheon. Commonwealth club was in charge last spring. Mrs. Katherine G. Howard, Deputy Administrator of Civil Defense, was guest speaker. Polly Patterson Logan, Σ-Nebraska, was chairman.

Within easy driving distance of Boston and included in Spring Luncheon invitations are three other Kappa groups:

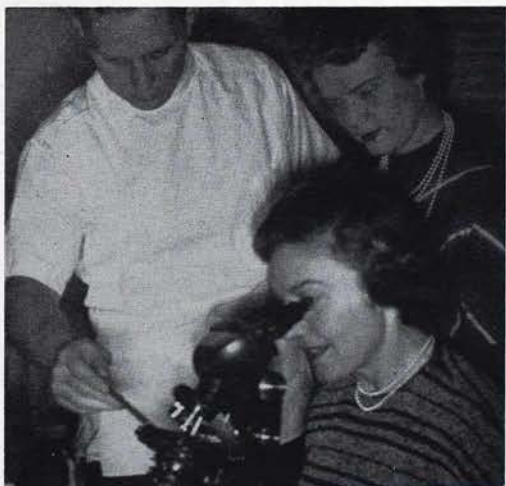
*Bay Colony:* Chartered April 18, 1950: Membership, 19.

Bay Colony was fairly recently started to



Kappas in the Boston area joined for their annual Christmas luncheon. Gifts for the Girls' Club of Boston were brought by each member.

provide more convenient and accessible meetings for a group of Kappas living along the north shore, including Lynn, Marblehead, Swampscott and Rockport. One of their projects has been collecting games and toys for Camp Seahaven, a camp at Plum Island for polio victims. Money for supplies is also contributed. Last Christmas they made little dolls and filled them with goodies. These were sent to Hale House in Boston. Each fall they entertain girls from their area going to schools where Kappa has a chapter. This is a great help in their quest for good recommendations.



The intricacies of the microscope which the Buffalo association donated to the Children's Hospital are explained to Marjorie Kreher Meisburger, Δ Γ-Michigan State and Barbara Burney Sinclair, Γ Ζ-Arizona.





Marjorie Wright Upson pours tea for Middlebury actives Sally Evans, Mary Lou Hodge, June Higgins and alumnae Sue Smith Pearson, Geraldine Wimmelt Burns and Polly Upson at a recent tea the alumnae had for members of the active chapter. All are members of T A-Middlebury.

*Springfield, Massachusetts:* Chartered June 25, 1945: Membership, 19.

The chief interest and activity of this club is centered in the active chapter at the University of Massachusetts, Delta Nu in Amherst. The fact that the chapter is 40 miles away does little to change their opinion that this is a most worthwhile endeavor. Occasionally they have a guest speaker at a meeting or have a picnic, but most often the meeting is a work meeting for the chapter. Help with rushing parties, with initiation, new robes, advisory and house boards are jobs the Springfield Kappas do cheerfully. They raise their money at rummage sales, merchandize parties, etc.

*Rhode Island:* Chartered April 1, 1946: Membership, 12-15.

This is one club that covers the whole state of Rhode Island. Although the state is small, the distances between Kappas and their meeting places is great. It becomes very difficult to have many projects or activities. However, the group feels that they are doing a necessary job in providing a point of contact for new Kappas and in furnishing recommendations for active chapters.

Nancy Duke Lewis, B X-Kentucky, who is the dean of Pembroke College, spoke at the Founders' Day luncheon at the Rhode Island country club. She compared the freshmen of today with those of 20 years ago. The talk was greatly enjoyed and Dean Lewis invited the Kappas to luncheon at Pembroke College for their April meeting.

The treasury of the Rhode Island club was lost at sea during Hurricane Carol. The treasurer, Carolyn Schoettker Davies, T K-Kansas

State, lives in a quaint old light-house on Nayet Point—and the sea roared in and depleted the funds. Fortunately she and her children were saved by forming a human chain.

The philanthropy helped by this club is "Exeter," a home for feeble-minded children. They provide soft toys and clothing.

Farther up New England, much farther, is Middlebury, Vermont, and there at the site of Middlebury College is:

*Middlebury:* Organized June 17, 1923, as an association; April 18, 1944 changed to club: Membership, 6.

This tiny club, not really big enough to be a club, does a heroic job. As an advisory board to Gamma Lambda chapter, they provide loyal and loving service. Because the chapter is not housed, they open their homes for initiations, banquets, and other social functions of the chapter. They cover the whole state of Vermont in their quest for recommendations. Each spring they invite all Vermont Kappas to a meeting. They correct the galleys for the state of Vermont and once raised over \$200 for the Dorothy Canfield Fisher fund. Because of the big job done by this tiny group, they were awarded an honorable mention for the club award at the Jasper convention.

Now on our journey we cross over into New York state. Here, the first group we meet is:

*Capital District:* Chartered March 26, 1942: Membership, 40.

Capital District is actually Albany, the capital of New York state, and its suburban area. Troy, New York, famous for shirts and collars, is also included in its area. Since the group is not concentrated in one community,



Three B Ψ-Toronto actives, Cathy Gillelan, president, Nadine Blythe and Barbara Dunbar, discuss the aid given them by their Toronto alumnae in decorating their new lounge and dining room.



programs and projects are kept flexible.

The outstanding activity of this group is its annual foreign students' dinner. All foreign students attending colleges in Albany are invited. They all come, too. The idea was conceived from a story of a foreign student having spent several years in this country without ever having been inside an American home. So each year the students are invited into a Kappa home, served an American dinner, introduced to the husbands, and given an insight into American lives. Kappas too, have gained a better understanding of our foreign friends, their lives and customs.

As a rehabilitation project, the Albany Kappas have addressed 60,000 envelopes for the Easter Seal campaign. Some were done at home, some by friends and many, many at Kappa meetings where prizes were given for the greatest number addressed in one evening. Locally, rehabilitation consists of aiding St. Margaret's Infant home by means of sewing, parties, and other non-monetary services. Speakers, supper parties, a home-art and bake sale, and good fellowship complete this group's activities.

*Schenectady:* Chartered November 29, 1950: Membership, 31.

Schenectady is a city of 90,000—the home of General Electric. Many of the Kappas in this group are merely passing through for a year or two while their husbands are being trained. This year the group is concentrating on building an attractive program to stimulate membership. Margaret Sanford Hout, B B<sup>A</sup>-St. Lawrence, of Albany, brought them a convention report as they had no delegate. Money making projects consist of bake sales,

bridge parties and a Christmas open house. All the proceeds are used for their favorite project, the Schenectady Children's home. They staff it once a week, and volunteer for scout and cub leaders. They put on parties, help with homework, and try to take the place of parents to otherwise neglected children.

*Ithaca Intercollegiate:* Chartered May 26, 1925; reorganized March 17, 1936: Membership, 20.

Ithaca is the site of Cornell University so the interests of this group are tied mainly to the chapter, Psi. Advisory and house boards, joint meetings and picnics, are the form taken by this activity. The Service League shop whose sales help support the Tompkins County Mental Health clinic, is actively supported by the members of the association. All local Kappas donate used clothing, the sale of which benefits both Kappa and the clinic. Volunteer workers include many Ψ-Cornell alumnae. Alice Schade Webster, Katherine Cudworth Winding, Mary Bancroft Nichols, and Martha Smith Poucher all serve on the board of directors.

*Syracuse:* Organized December 16, 1896: Membership, 100.

Home of Syracuse University and a city of 250,000. The group of Kappas here is unusually active. Their most interesting and original project is a Kappa custom-made fashion show, an annual event. Kappa Kappa Gamma alumnae model clothing of all kinds which they have made themselves. Included are many mother and daughter or son ensembles, formals, playclothes, afternoon wear and even raincoats. The show is made possible by the cooperation of the fabric department of a



local store where the patterns and materials are purchased. In return for such good advertising, Dey Brothers supply the hall, glamorous favors, programs, and a fashion coordinator and commentator for the show. An added feature is a display of hobbies and craft work done by Kappas. This provided the backdrop for the show.

Volunteer work and financial aid for the Gordon D. Hoople Speech and Hearing center affiliated with Syracuse University, has been chosen as the association's part in the Kappa rehabilitation project. During the past three years under the guidance of Margaret Trent Rogers, B X-Kentucky, and Jean Tiffany Markowski, B T-Syracuse, the group has purchased toys and play equipment, a phonograph and records for the observation room of the clinic. Painting smocks were made for the youngsters and Halloween and Christmas parties were given for the 75 children attending the clinic. Funds have furnished hearing aids for needy children and a nursery school on Saturday mornings is manned by Kappas.

Syracuse Kappas are sharing in the ever increasing activities and influence of City Panhellenic. With a goal of good public relations for fraternity groups, City Panhellenic has published a brochure for college freshmen describing college fraternity life and obligations. In the TV field, City Panhellenic last year produced a series of eight weekly programs on a local station describing fraternity philanthropies. An All-Greek tea is given each year for high school seniors in the area, and a small scholarship is given to the outstanding senior in the county.

*Buffalo:* Chartered January 10, 1928: Membership 60.

Buffalo is a large industrial city and railroad center. Its position on the Great Lakes also makes it a great shipping and milling center. Most of the Kappas living here make their homes in the rapidly spreading suburban area.

The Buffalo association has twice won the McNaboe award for small associations—in 1948 and again in 1954. Excellent organization, large working committees, and a well planned program account for much of the credit. The program is always planned around

a theme. This year the theme is taken from *Ecclesiastes* 5:3. "For a dream cometh through the multitude of business." Much of the success of this is due to the leadership of Marjore Youmans Abbey, P<sup>A</sup>-Ohio Wesleyan.

Each year Buffalo raises its philanthropic monies at a luncheon and book review. Every one of Kappa's philanthropies are included in the distribution of this fund. Locally they contribute to the Buffalo Philharmonic Orchestra. In the field of rehabilitation, they last year gave \$200 for the purchase of a microscope for the new Children's Hospital build-



The children of Mary Alice Reed Sisson, B T-Syracuse and Margaret Trent Rogers, B X-Kentucky, model painting smocks made by Syracuse Kappas for the Hoople Speech and Hearing clinic. Pictured with their mothers is Dr. Louis DiCarlo, director of the clinic.

ing fund. This is one of the outstanding pediatric centers in the state. This year, the New York State Hospital for the mentally ill will be helped with recreation therapy and parties.

*Chautauqua Lake:* Chartered March 30, 1944: Membership 15.

Jamestown, New York, the nucleus of this club, is a small industrial city noted for the manufacture of furniture. The tenth anniversary of this club was celebrated this year with elaborate preparations. Three of the original charter members are still in the club. Helen Lathrop Smith, I-DePauw, the organizing charter member is now president of the alumnae club of St. Petersburg, Florida.

The Chautauqua Lake club is one of the few Kappa groups in the country having 100%



membership of the Kappas in the area. The past two years the club has been raising money for a scholarship to benefit the Jamestown Community College, now in its third year of existence. A bridge party and an Easter flower raffle have both been successful. The remaining amount needed will be raised by a Christmas raffle of a beautiful doll with a lavish handmade (by Kappas) wardrobe.

*Niagara Falls:* Chartered February 26, 1953: Membership 12.

Site of the famous falls and the great power producing plants, Niagara Falls is an indus-



*This doll and her custom-made wardrobe were the work of the Chautauqua Lake club members.*

trial city as well, especially in chemicals. A small newly formed club here is just beginning to get acquainted with its potential service to Kappa. Knowing that recommendations are an important area of service, the club last year entertained at a tea, all Niagara Falls area girls going to colleges having Kappa chapters. A few other members of Panhellenic groups assisted, on an unofficial basis. Real cooperation resulted. Sale of magazines to help the Rose McGill Fund is the other Kappa service done with distinction by this young group.

*Rochester:* Organized April 20, 1917: Membership 50.

Rochester is an industrial city and best known as the home of Kodak. A very active Kappa group flourishes here.

For two years, the Kappas have planned their rehabilitation project around help to

the retarded child. The main project is the Rochester School for the handicapped children. This school is located in a section of one of the public schools, although not under the direction of the board of education. A paid staff of teachers still depend upon the community for a great deal of volunteer assistance. Kappas are supplying this as well as devoting several work meetings a year. Last April, the Kappas had a sale of handsome handmade articles donated by members. Proceeds bought a duplicating machine and a year's supply of materials for the school.

One meeting had the director of the school as a speaker. Another was devoted to making costumes for the children's Christmas play and another found the Kappas addressing envelopes for the Easter Sale campaign. Volunteer work consists of working with the children in their arts and crafts classes and doing secretarial work. Harriet Clark Conners, B B<sup>A</sup>-St. Lawrence, is chairman of the philanthropy.

A rummage sale and a few purely social meetings complete the schedule for this busy group of Kappas.

We have now journeyed across New York State from East to West along the route of the old Erie Canal and the New York Central. Now we start north and soon reach Canton, almost at the Canadian border. Here we find another Kappa group:

*St. Lawrence:* Organized October 31, 1920: Membership 26.

Canton is the site of St. Lawrence University and Beta Beta chapter. Almost all the members of the association are alumnae of this school.

The project on which most effort is spent is the financial support of the active chapter. An annual newspaper, *The Reminder*, is sent to every Kappa alumna of St. Lawrence. It contains news, class by class and always an appeal for donations to the Grace P. Lynde fund for maintenance of the house. In the spring a benefit bridge and style show is held at the house for a scholarship for a needy St. Lawrence girl, not necessarily a Kappa.

The annual Christmas party is a pledge-active-alumna affair—a buffet supper at the house. Each alumna takes a small gift such



as an ash tray or cup and saucer for the house.

Last year at one meeting with a guest speaker, alumnae of the other four houses on campus were invited. It was highly successful and will be repeated annually. Another interesting activity is the annual scholarship dessert at the house. Awards are made to the actives and the classes.

Now we cross the border into Canada. The first place we visit is:

*Toronto:* Organized as a club May, 1921, as an association January, 1926: Membership 90.

The Toronto association is divided into a Junior and Senior group, the only such division in the province. They meet separately except for the Christmas party and the party for graduating seniors.

Since 1950 the Kappas have been interested in the Interfraternity Cerebral Palsy clinic for young adults. Originally many hours of volunteer service such as driving, secretarial, social therapy and training were given by Kappas but recently the assistance has become entirely monetary. More than \$1,000 has been contributed and assistance will be continued.

Last fall a mammoth biennial Bazaar was held at Toronto's fabulous Casa Loma Castle. This was a joint project of actives, alumnae and mother's club. Tea was served to more than 3,000. On sale was a tremendous variety of hand-made gifts, baked goods, toys and new merchandise wheedled from merchants. Over \$4,000 profit was derived from this affair. \$1,500 was voted to philanthropies and \$2,500 was given to renovate the house. The chairman of this affair was Marjorie Sundstrom, B Ψ-Toronto. Lending glitter to the occasion was Marion Moody Pearson, B Ψ-Toronto, who came down from Ottawa especially to open the Fair. Julia McGrew's, B Ψ-Toronto, first-rate whodunit, *Taste of Death* was on sale in the lobby.

The chapter house renovation was done under the talented hands of architect Martha Stewart Leich, B Ψ-Toronto. Actives and alumnae alike are delighted with the new spaciousness and bright paint and fabric.

*Ottawa, Ontario:* Chartered January 9, 1946: Membership 10.

Ottawa is the capital of Canada. A very small group of Kappas here meet occasionally for sociability and to carry on the necessary work of a small club—that of providing a contact for new Kappas and providing recommendations for college bound young people. Ottawa has a largely transient population due to the vagaries of election. Most Kappa husbands in this group seem to be in government. Though busy with divergent interests, Kappa seems to be the only bond.

*Montreal, Quebec:* Chartered April 15, 1936: Membership 41.

Montreal is a large old city, half French and half English. Both languages are heard on the streets and even most signs are printed in both languages. It is the site of McGill University.

The Kappas here have a deep interest in rehabilitation. Two large rummage sales each year at a settlement house furnish the money to support the salary of a speech therapist at the Occupational Therapy and Rehabilitation Center of Montreal. Several parties each year for the actives—a Christmas party and the March graduates dinner—provide close contact and interest in the active chapter.

At this point in our trip around Alpha province we sail from Montreal for England where the London Kappas have formed an association.

*London, England:* Chartered 1931: Membership 15.

Actually this association draws its membership from all of England where there is a total of 44 Kappas. Because of the distances, many Kappas spend the weekend when they travel to the Kappa meetings. Some are service wives, but many are living in England permanently. Last year the program was developed around the theme Explore London with luncheon meetings at the Tate gallery, Crosby Hall, Piccadilly and the Art Gallery. A Coronation luncheon was held and many visiting Kappas from Canada and the States attended. Each year a newsletter with information and addresses of all Kappas in England is sent to everyone. Even though a Kappa does not join the group, she is thus kept in touch with the other Kappas. Nora Waln is honorary president of this group.



## *Alumnae news around the globe*



Kappas help make Dallas, Texas, the outstanding fashion center that it has become. Hope Evans,  $\Gamma \Phi$ -SMU, designer for Donovan Manufacturing Company, and Cynthia Hood Archibald,  $\Gamma \Phi$ -SMU, model a lounging suit and dress designed by Miss Evans as Virginia Shaffer Cameron,  $\Gamma \Phi$ -SMU, past president of the Dallas Fashion group looks on.



# ***Whatever happened to . . .***

## **In the Southwest?**

*Jane Moore Waggoner*, Γ Φ-SMU, is a member of the Wichita Falls park board and planning commission.

*Elvina Truman*, Δ Π-Tulsa, an outstanding pianist, is now studying in New York City. Tulsa association members last spring were proud to hear her recital sponsored by SAI, music honorary.

*Floyd Elliot Cobb*, of Tulsa, B Θ-Oklahoma, is the state president of the Oklahoma Educational association.

*Dorothy LeMaster Carter*, B Α-Illinois, was given the honor award at the National Restaurant association meeting in their annual food service contest, for her 1800 Restaurant in Utica Square, Tulsa.

Muskogee president, *Margaret Crew Reeder*, B Θ-Oklahoma, works at Porter-Crew and is active in PEO.

*Martha Rowsey*, B Θ-Oklahoma, while working for her father, finds time to chairman the public relations committee of the YWCA and bulletin committee of the League of Women Voters in Muskogee.

*Josephine Hagerman Martin*, PΔ-Ohio Wesleyan, is UTO chairman and *Adelaide Gould Pritchett*, M-Butler, is publicity chairman of the women's auxiliary of Grace Episcopal church in Muskogee.

*Betty Jones*, Γ Ν-Arkansas, is secretary to the assistant manager of the regional office of the Veterans' Administration in Muskogee while *Harriet Zachry*, B Θ-Oklahoma, is deputy clerk in the US Federal Court.

Muskogee's Art Student guild is led by *Mary Hively McKee*, B Θ-Oklahoma, while the Shakespeare club claims *Phyllis Bolton Agent*, B Θ-Oklahoma, as its president. *Stuart Smith Asquith*, Γ Ι-Washington U., and her husband head the young married couples' class at the Muskogee First Presbyterian church.

*Rosalie Lewis Boen*, B Θ-Oklahoma, and *Joan Fast Reynolds*, B Θ-Oklahoma, are officers of their PEO groups.

*Shirley Duncan Clark*, B Θ-Oklahoma, serves as vice-president of the Stephens college alumnae and *Betty Hurst Murray*, Γ Ν-Arkansas is a PTA council representative.

*Catherine Fast Eddins*, B Θ-Oklahoma, finds her days busy in Muskogee as secretary of the state Phi Gam mothers' club.

*Betty Adams Holland*, B Ξ-Texas, has moved from Houston to join her husband in Washington, D.C. where he has recently accepted an appointment as assistant secretary of state for Latin American affairs.

*Acis Ann Cox*, B Θ-Oklahoma, Chandler, Oklahoma, native, is working at the University of New Hampshire this year under the Danforth Foundation program, through which 25 girls are selected from across the country and assigned to work under a scholarship with social and religious organizations on college campuses.

On the board of directors of the West Texas Children's Aid Society, an organization devoted to the care of all children who are homeless or mistreated, are two Wichita Falls alumnae association members, *Sybil Kell Cahoon*, B Ξ-Texas, and *Margaret Duncan Arnold*, B Ξ-Texas.

*Carolyn Hammond Lee*, B Ξ-Texas, is chairman of the Canteen of the Wichita County Red Cross which serves the Sheppard Air Force Base near Wichita Falls, Texas.

*Anne Boyle McNamara*, B Ξ-Texas, was honored as San Antonio's "Club Woman of the Week" for her outstanding work as chairman of the Junior League rummage sale, a project to raise money for charity.

*Margaret Peck*, Γ Α-Middlebury, is the acting dean of women at the University of Texas.

*Bernice Lach Scofield*, Ω-Kansas, has established an admirable record as director of the youth choirs for the First Presbyterian Church in Ponca City, Oklahoma. She is beginning her ninth year as director of choirs for children from four to fourteen years of age.



## ***Two university presidents are Kappa husbands***

### ***Southern Methodist University***



Joel Estes Litche Tate,  $\Gamma$   $\Phi$ -S.M.U., whose husband, Dr. Willis Tate, was elected last May as the fifth President of Southern Methodist University, Dallas, Texas, and their two children, Jo Ann and Willis, Jr.

Dr. Tate has been assistant dean of students since 1945 and dean of students since 1948. In 1950 he was made vice-president in charge of development and public relations. Mrs. Tate is an active member of the Dallas alumnae association.

### ***University of Arkansas***

Another  $\Gamma$   $\Phi$ -S.M.U., Catherine Zeek Caldwell, lives in the president's home on the University of Arkansas campus in Fayetteville. The wife of Dr. John Tyler Caldwell, president of the University, is pictured with her husband and their three children, Chuckie 2, Andy 4 and Alice 6.





## Kappa profile Tulsa style



At the left Mary Hindman Galey turns confident eyes on a small boy apprehensive of new experience with sounds at Tulsa University Hearing Clinic.

In June of 1952 a wealthy Tulsa philanthropist made available to the University of Tulsa funds to install and maintain a Speech and Hearing Clinic, one of the greatest humanitarian gifts which the University has ever received.

When news of this gift became known it was no surprise to Tulsa Kappas to learn that one of their own members, Mary Hindman Galey, B Θ-Oklahoma, had been selected to set up the hearing clinic and to serve as the head of this very important project.

The Tulsa University Hearing Clinic, boasting all latest developed types of electrical equipment for measurement and control of sound, has been under Mary Galey's supervision since the planning stage. It serves a four state area. While primarily for children with speech and hearing defects, it actually serves and benefits both paying and indigent patients of all ages who come there with hearing problems.

GLADYS HENSLEY ENGLE, B Θ-Oklahoma

Margaret Caldwell Scarbrough, B Ξ-Texas, and her husband were honored last November when they were bidden to attend the dinner honoring the Queen Mother held by the English Speaking Union during its annual meeting in New York. Mrs. Scarbrough is an active member of the Austin alumnae association.

During the Junior League's 15 years' existence in Austin, five of its presidents have been Kappas all B Ξ-Texas. They are Margaret Caldwell Scarbrough, Julia Matthews Robinson, Ellen Steck Ross, Eleanor Niggli Tyler and this year's president, Eleanor Stayton Gammon.

## Kappa profile Texas style



In her plantation home in Beaumont, Texas, is the studio of Thyrsa Head Looney, B Θ-Oklahoma, who was chosen by *Interior Design*, a top professional magazine for decorators and architects, as one of seven decorators in the southwest to be featured in a recent issue.

Object of the survey, covering different sections of the United States, is to determine actual trend in design. The survey will be compiled in book form as a reference book for wholesale manufacturers.

Each member submits a picture of a room recently completed on an actual job with full infor-

mation concerning color scheme, fabric, rugs, wallpaper, lighting fixtures and furniture. Mrs. Looney presented a guest bedroom in a Beaumont home she decorated in New England manner.

Prior to her marriage Mrs. Looney did costume designing for Harry Collins and costumes for two Broadway plays. Changing to interior design she was head decorator for Holbsy Galleries and later for Neiman Marcus.

In 1953 at the national conference of the American Institute of Decorators a large photograph of a Beaumont room done by Mrs. Looney was selected as one of 60 to be chosen from several hundred entries. During February her talents are being featured in a show at the Beaumont Art Museum entitled "Art in the Home" which, in addition to Mrs. Looney, features a sculptor, a painter, an architect and a garden expert.



## **Dallas honors Lois Shapard**

Lois Lake Shapard, B Ξ-Texas, seated below her portrait which hangs in the Gamma Phi house at SMU, and Lucretia Donnell Newman, Γ Φ-SMU, the artist who painted the portrait. Dallas alumnae and Gamma Phi actives celebrated Founders' Day with a banquet honoring Mrs. Shapard and Mary Lou Myers Wiggins, B Ξ-Texas, Theta province director of chapters. Announcement was made at the banquet that the association yearbook was dedicated to Lois Shapard for the years of loyal service she had given in behalf of the Southern Methodist chapter and Dallas association.



Julia Matthews Robinson, B Ξ-Texas, is chairman of the Austin Red Cross volunteer service and also of the American Women's Volunteer Service.

Linda Nixon Seeligson, B Ξ-Texas, reigned as Coronation Queen during the Fiesta week celebration of Texas independence from Mexico. Among the court were four Kappa duchesses from San Antonio, Mary Jane Cameron, B Ξ-Texas, Tinka Cocke, B Ξ-Texas, Ruth Ann Davis, Γ K-William and Mary, and Betty Brewer Chumney, B Ξ-Texas.

Agnes Doran Stacy, B Ξ-Texas, serves as chairman of the Women for Eisenhower committee in Austin.

Frances Boyd Smith, B Ξ-Texas, is president of the board of the Kemp Public Library, Wichita Falls.



## **It is from "Jacques"**

In Silsbee, Texas, early in 1949, Jacqueline Blackwell Collier, B Ξ-Texas, opened "Jacques" a modern dress shop by chance. Her mother-in-law, owner of a vacant lot proposed the idea to Jacqueline and since that time the business has been growing with the town. Not only are there local customers but from Houston, Dallas, Memphis and as far away as Caracas come letters "Dear Jacque, please select . . ." At the rear of the aqua toned shop is a cozy corner, featuring soft divans, chairs, coffee tables and lamps where friends gather at coke and coffee time to see the new styles as they arrive.



*Inez Sterling Adams*, B Ξ-Texas, served as co-chairman in charge of the Corpus Christi residential area for the 1954 United Fund drive.

*Ellen Brooks West*, Γ-Northwestern, is active in a new project in Texas, working as a volunteer in the Cancer Clinic home visiting service. Wichita Falls is the second city in Texas to offer a home visiting course. [After 17 hours of training, volunteers go to homes of cancer patients, drive them to hospitals or doctor's offices for treatment and help at homes where long illnesses have drained the finances and the vitality of the families.]

An outstanding San Antonian is *Margaret Batts Tobin*, B Ξ-Texas, who is a member of the board of regents at the University of Texas, the board of trustees of San Antonio's new Marian Coogler Art Institute and the former president of the San Antonio symphony association.

*Grace Duff Snider*, Ω-Kansas, who two years ago received her 50-year-award, has resumed a hobby of her girlhood, that of oil painting. Mrs. Snider does still lifes, landscapes and portraits. Two of her paintings are now on exhibit at Midwestern University in Wichita Falls, Texas, where she is a member of the alumnae association. Still active in civic affairs, Mrs. Snider is currently on the YWCA board of directors and is serving on the committee for planning and financing a YWCA residence. Her daughter, *Helen Snider Cannan*, B Θ-Oklahoma, is also working on this project as head of the women's division of finance. Mrs. Cannan is president of the Criterion club, adviser to the Senior-Junior forum and serves with her mother as a member of the YWCA board of directors.

The Martha-Ann label on the custom made skirts called Fancy Felts denotes the imaginative work of two members of the Corpus Christi alumnae association, *Martha Welder McMillan*, B Ξ-Texas, and *Ann Brimberry Vaky*, Δ B-Duke. Creation of these conversation pieces started on a small scale in Martha's living room and continues to flourish there although it is now making inroads into other areas of the house. Latest development in this new enterprise were skirts for Christmas tree bases which met with great success during the past holiday season.

### **Little Rock honors three**

At the Founders' Day luncheon Eleanor Ewing Jackson, B Γ-Wooster, 1897 (left) and Elise Naylor Bittles, I-De-Pauw, 1901 (right) received fifty-year pins. Center is E. Diane Jackson Eberle, Γ N-Arkansas, who received the pin for Cynthia Mills Moss, K-Hillsdale, 1881, who because of illness was unable to attend.



### **And In New England?**

*Dorothea E. Higgins*, Γ Δ-Middlebury, personnel director of one of the foremost department stores in Buffalo, has recently been re-elected president of the Middlebury College alumnae association.

*Gertrude Cornish Milliken* and *Alice Guest Howson*, both Γ Δ-Middlebury, were the two first women members of the Middlebury College board of trustees.

*Marjorie Beck Andriola*, B Δ-Michigan, active for many years in the League of Women Voters, is now the only woman on the Town Planning Board of Clarence, New York. Mrs. Andriola is a member of the alumnae association of nearby Buffalo.

*Hazel Hotchkiss Wightman*, ΠΔ-California, continues to bring honor to Kappas as the "Queen Mother of Tennis." She has won 43 national tennis championships and played in her 50th national championship match last August. She is a member of the Boston Intercollegiate alumnae association.

### **40 The Key of Kappa Kappa Gamma**



## A mother and a daughter



Martha Mumma McClintock, B Z-Iowa, is an outstanding member of the Albany, New York, alumnae association. Mrs. McClintock, whose husband is a surgeon and thyroid specialist, gives time daily as a Red Cross nurse's aid in the nursery of Albany Hospital. She is an active member of the medical auxiliary.

Gail McClintock Pike, B Z-Iowa, formerly of Albany, now has two programs on WCOL in Columbus, Ohio. While studying in Paris she played the title role in an American stock company production of *Dream Girl* and later, while at the Royal Academy in London, she broadcast for the Festival of Britain.



Patricia Evans Richardson, Δ N-Massachusetts, has been selected by the town of Woburn as the "Busy Person of the Week" for her willingness to assume leadership in community projects. She is residential chairman of Woburn's Salvation Army drive and corresponding secretary of the West Side Betterment association.

## Attend convention

Participating in the annual convention of the national Society for Crippled Children and Adults held in Boston were Jane Froman, Θ-Missouri, Kappa alumna achievement award winner, noted singer and TV star and Harriet Ford Griswold, B H-Stanford, a member of Boston Intercollegiate association, who is chairman of the ladies committee of the Bay State Medical Rehabilitation clinic of Massachusetts General Hospital. She also is on the executive committee of the Middlesex county chapter of the National Foundation for Infantile Paralysis and is an advisory member of the rehabilitation project committee of the Junior League of Boston.



## Receive awards

In Rochester, New York, two fifty year members received their pins: Left, Lucille Dunbar Eckberg, Γ P-Allegheny, is pinning Florence Lowry Shiefer, B T-Syracuse as Laura Spurr, B B-St. Lawrence, watches. Right, Martha Alexander Barbee, Γ Δ-Purdue, presents the 50 year pin to Marjorie Gardner Salisbury, B T-Syracuse.





# CAREERS AND KUDOS

## November winner



Usually as the February issue of THE KEY goes to press we are writing of those Kappa husbands who made the grade at the polls in November. Now comes one of our own, Frances McGovern, A-Akron, a 27-year-old lawyer, who led a field of ten candidates by more

than 10,000 votes to win election as a Democratic representative to the Ohio State legislature.

No feminist she, Frances promised herself "not to get into any arguments about why women should be in the Legislature."

"And I didn't either," she relates. "I campaigned strictly on my merits. The voters liked what I said and decided to take a chance with me."

## New Republican senator

Thomas E. Martin, husband of Dorris Brownlee Martin, B Z-Iowa, is the new Republican Senator from the State of Iowa. The new Senator was first elected to Congress in the fall of 1938 and re-elected to the House seven times.

## Montana's first woman

Missoula, Montana, is proud of their association president, Olive McLeod Mulroney, B Φ-Montana, who is the first woman member to serve on the board of regents of the University of Montana.

## Broadway composer



One of Broadway's most attractive composers, Joyce Elldridge, Δ Δ-Miami, whose most recent work will be heard in the new musical, *On the Wing*, scheduled to open at the Anta Theatre in New York this season.

Joyce teaches Music for the Dance at New York University, serves as accompanist for Martha Graham and collaborated with Gladys Andrews on the latter's book, *Creative Rhythmic Movement for Children*.

## It's a small world

From India comes a letter to Fraternity Headquarters from Caroline Godley O'Dell, M-Butler, who with her husband is at Osmania University, Hyderabad, Deccan, India.

"Several weeks ago we had a visit from Dr. Isabella Thoburn who spent a day here en route to Bangalore. She is the great niece of the Isabella Thoburn who founded the college in Lucknow in the 1880's. At present she has the title of executive secretary of the United States Education Foundation for India in New Delhi. All the Fulbright people come and go through her office. Previously she taught at Wesleyan College in Macon, Georgia, and came out here in June this year. She went into Natalie's room, and said, on seeing the blue and blue dog with KKG, 'Who is the Kappa?' I told her both of us, and she said 'So am I.' Gamma Rho, Allegheny College, Pennsylvania! Small world!!"

Mrs. O'Dell continued her story of their new life. "Natalie (her daughter also from M-Butler was taking her junior year at Isabella Thoburn College in Lucknow, India) left college the middle of August because of illness. A few weeks later we went to Kodaikanal in South India with a friend who has children in the mission school there. It is beautiful there, 7000 feet elevation, wonderful climate. They needed help, so Natalie stayed on to teach fourth grade and loved it. It is an American Mission school for the children of missionaries, and business people, and state department workers. The children are mostly American, with a few British, German, Swedish. The staff is mostly American with a few British. She came 'down' the end of October for the winter holiday which they have when the weather is cooler on the plains. A few days later she went to Nagpur to join a Kodai group working on a work project for the YMCA. From there a group of them went by third class to Agra where they saw the Taj in both sunrise and moonlight. Then on to Delhi for a few days and to Benares and Calcutta. From there Natalie brought three of the group home for a few days. They are two British girls, senior and sophomore in high school, and a young Oberlin graduate (male) who teaches music. We really had fun. We had six others join us for a dinner party—other Kodai kids and an instructor. Our cook made a delicious Indian dinner, and ice cream also. He served the ice cream with peaches, so he said. But although the appearance was luscious, they didn't taste right. Finally one of the guests identified them as sweet potatoes! Of course the pictures on the can are similar—but not the taste!"

"A few words can't describe our experiences here. We have seen the best and the worst, in this land of extremes."



## Lecture tour for Nora Waln

Nora Waln (Mrs. Osland-Hill) B I-Swarthmore, starts a two months lecture tour in February which will take her from Louisiana and Texas to Wisconsin, Indiana, Illinois and Ohio, under the auspices of the Redpath Bureau.

## Hillsdale honors textile expert

Marian Willoughby, K-Hillsdale, received an alumni achievement award from Hillsdale College in October, the only woman among five alumni so honored this year. Marian is professor of clothing and textiles in Purdue's school of Home Economics, and is the author of two books, *The Paris Couture* and *The London Couture*.

## Town hall debut

*The New York Times* of October 11, 1954 noted the Town Hall debut recital of the day before of Marjorie Hamill, B T-Syracuse as indicative of musical taste and enterprise.

## Receives honorary degree

Dorothy Canfield Fisher, B N-Ohio State, received an honorary degree from Smith College last commencement.

## "Chicken every Sunday"

Prompted by a great family fondness for chicken, Elizabeth Tucker Cottingham, Δ-Indiana, was featured in *The Indianapolis News* with her adaptation of Chicken Chablis. The original recipe was meant for barbecuing over an outdoor fire, but Mrs. Cottingham had turned it into an indoor treat.

## Presbyterian hospital establishes McNeill scholarship

From the publication of the Presbyterian Hospital School of Nursing in Chicago comes word of Carrie Herdman McNeill, B Δ-Illinois. After 18 years as assistant director in charge of nursing education, Mrs. McNeill is retiring this spring. In her honor a scholarship is being established. Any who may wish to contribute to this scholarship may send their check made payable to the

Presbyterian Hospital with a notation that they are for the McNeill scholarship fund. Checks should be sent to Miss Sylvia Melby, director of nursing, 1753 W. Congress Street, Chicago, Illinois.

## Paints 46-foot bank mural

Kathryn Fligg, B A-Pennsylvania, recently completed an eight month job of sketching and painting a 46 foot by nearly 7 foot mural for the First Federal Savings and Loan association of Upper Darby, Pennsylvania, which reflects some 350 years of Delaware county's history.

After weeks of research and scores of individual sketches, a small-scale version in color was made. This was then divided into squares and transferred to a black and white version of the full scale mural. Most of the work was done in Miss Fligg's home, but the final work was completed on a 50-foot easel-type frame stretched in the Cheltenham Art Center.

Prior to her latest mural, Kathryn painted panels for cars of the Kansas City Zephyr of the Chicago, Burlington and Quincy Railroad. Prior to that she won the Cresson scholarship which gave her two years of European study and the Lewis S. Ware fellowship.

## Glamour is her business

Helen Kime Lewis, Δ A-Penn State, now on the staff of *Glamour* as assistant to the merchandise editor, says she writes those "scribbles" under fashions in the front pages.

## Dean of students

Mary Reno Frear Keeler, Δ A-Penn State, who taught history at Vassar last year, is now dean of students and also teaching at Hood College.

## Now an M.D.

Frances Hayward Smith, Δ A-Penn State, is now an M.D. specializing in gastroenterology at Lahey Clinic in Boston.

## Tapes radio series

Patti Searight, B N-Ohio State, of WTOP-Washington has just returned from Europe where she taped a series for CBS.

## Martinsville honors two

Members of the Martinsville, Indiana club honored Hazel Springer Egbert, M-Butler, and Grace Perry Bain, Δ-Indiana, at their July dinner meeting. Mrs. Bain has been a member for 65 years and Mrs. Egbert for 50 years. Both were presented 50 year pins.





# Big Spring Bargains in Magazines

**Order Now and Save Money**

	Price		Price
<i>American Home</i> —January 1-April 30		<i>Parents' Magazine</i> —February 1-March 31	
In U.S. & U.S. Possessions 16 mo.	\$ 2.00	New subscriptions 10 mos.	2.00
<i>Changing Times</i> —January 1-May 31		16 mos.	3.00
6 mos. plus book—"99 New Ideas on your Money, Job & Living for 1955"	2.00	<i>Newsweek</i> —(Continental U.S. & Canada) New Only, 44 wks.	3.37
<i>Children's Activities</i> —January 1-March 31		<i>Time</i> —January 10 until further notice	
In U.S. Only 8 nos.	2.88	In U.S. & Canada 78 wks.	6.87
<i>Coronet</i> —January 15-April 15		42 wks.	2.97
In U.S. & Canada 20 nos.	3.00	* Combinations (to one address) March 1-April 30—In U.S. & Canada	
<i>Life</i> —January 10 until further notice		* <i>Saturday Evening Post</i> and <i>Ladies' Home Journal</i>	
In U.S. 78 wks.	7.87	1 year each	7.50
In U.S. 39 wks.	3.99	* <i>Saturday Evening Post, Ladies' Home Journal</i> and <i>Holiday</i>	
In Canada 70 wks.	7.87	9 nos. each	7.50
In Canada 39 wks.	3.99	1 year each	10.00

## In Memoriam

It is with deep regret that *The Key* announces the death of the following members.

Mary H. Howell, B A-Pennsylvania, December 30, 1954.  
 Anna Brotherton Creps, B F-Wooster, November, 1954.  
 Carolyn Chamberlin Irwin, B F-Wooster, August 19, 1941.  
 Caroline Agerter McAfee, B F-Wooster, May, 1954.  
 Harriet Rice Milton, B F-Wooster, May, 1944.  
 Gwendolyn Russel Doob, Δ Δ-McGill, November 15, 1954.  
 Bernice Brock Ainsworth, E-Illinois Wesleyan.  
 Ruth Read Reid, Γ E-Pittsburgh, in Bartlesville, Oklahoma, November 8, 1954. Former president alumnae club.  
 Phyllis Kammerer Gleason, Γ Z-Arizona, October 21, 1954. Member of Southern Orange County association.  
 Bernice T. Banning, H-Wisconsin, November 28, 1953.  
 Martha C. Enochs, Δ Θ-Goucher.  
 Alma Wolf Six Atherton, I-DePauw, October 24, 1954.  
 At time of death was oldest living alumna of DePauw.  
 Margaret Bicknell Chillas, I-DePauw, November 11, 1951.  
 Maybird Smith Spurlock, I-DePauw, December 24, 1954.

Adele Rickel Bryant, Δ K-U. of Miami, 1946.  
 Winifred Herrick Bruce, A-Akron, August 16, 1954.  
 Margaret Schumacher, M-Butler, 1954.  
 Eva Corley Davey, B M-Colorado. Charter member.  
 Claudia Keely Erther, N-Franklin, 1954.  
 Nellie Roney, B N-Ohio State.  
 Marie Kouns Stanley, B N-Ohio State, in Dayton, Ohio, November 20, 1954. Member of Dayton Girl Scout commission.  
 Elizabeth Fickes Seed, Z-Adrian, 1954.  
 Mary Wilkison Rather, B E-Texas.  
 Helen Greely Waste, II-California.  
 Josephine Shryock Denny, Γ P-Allegheny, May, 1953.  
 Adelaide E. Jerrers, B T-Syracuse, July 20, 1954.  
 Susan Osgood Brewer, T-Northwestern, March 1, 1954.  
 Katherine Olive Hirst, Φ-Boston, 1954.  
 Elizabeth Hudson, Ω-Kansas, September 28, 1954.

**CORRECTION:** THE KEY regrets that Lillian Tamplin Phillips, Γ P-Allegheny, and Mary Blessing Told, Δ Φ-Bucknell, have in recent issues inadvertently been listed as deceased.

## Martinsville honors a Kappa of 73 years

A woman who has been a Kappa longer than the life span of the average person is Mrs. Robert Sellers, Franklin, Indiana, the former Lauretta Morgan, M-Butler, initiated November 2, 1880.

Tribute was paid to Mrs. Sellers by Kappas from Johnson and Morgan counties gathered at an October's Founders' Day luncheon meeting, which also served as a regular quarterly meeting

of the Martinsville alumnae club. In charge of the arrangements were Harriet Sweet Portteus and Rose Singleton Johnson, both Δ-Indiana.

Mrs. Sellers, because of ill health, was unable to attend the luncheon but Gene Portteus Branning, Δ-Indiana and Nancy Portteus Walters, M-Butler presented her 50 year pin at her home on the 73rd anniversary of her initiation.

ANNE ROGERS, Δ-Indiana





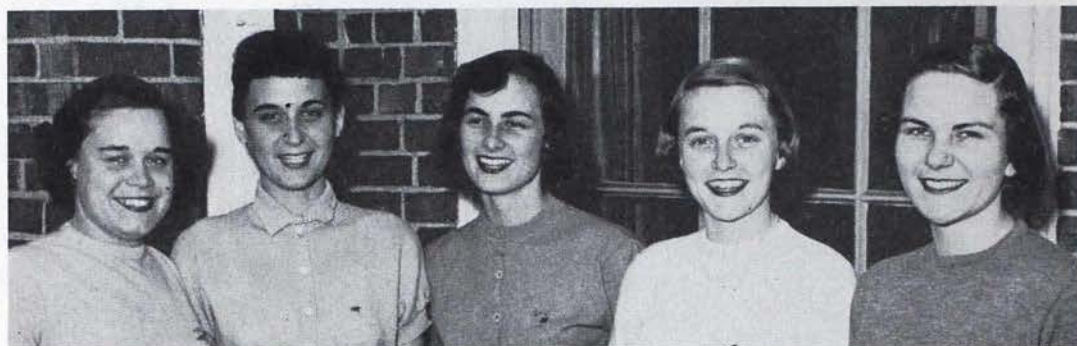
# C A M P U S

# H I G H L I G H T S

Queen of American Royal Livestock and Horse Show, Kansas City's Municipal Auditorium, October 15, 1954, was MARLENE HICKMAN,  $\Theta$ -Missouri. Forty candidates from five states, Missouri, Oklahoma, Nebraska, Kansas and Arkansas competed for the title. Marlene, the winner, reigned for two weeks over the festivities of this great agricultural event, attending banquets, meetings, horse and livestock shows. Two Theta chapter members participated. Denny Allen was one of eight ladies-in-waiting and Jane Bredberg was a BOTAR belle of the American Royal.



# ***The Key honors these mortar board members***



From  $\Theta$ -Missouri, Mortar Board tapped five Kappas: Jane Faurot, senior representative to AWS; Shirley Shipherd, AWS council and WAA board; Gracie Taylor,  $\Theta \Sigma \Phi$  vice-president, temporary treasurer SGA; Jackie Mathews, house council president AWS, Student Union board; Margie Curtis, AWS president, YWCA board.

## **Mortar Boards**

Virginia Ellison,  $\Delta$  M-Connecticut  
 Diane Miller,  $\Delta$  A-Penn State  
 Barbara Dixon,  $\Delta$   $\Phi$ -Bucknell  
 Sally Vierck, B N-Ohio State  
 Jane Beckley, B N-Ohio State  
 Nora Pickard, B N-Ohio State  
 Carol Lou Meyers, B P<sup>A</sup>-Cincinnati  
 Janet Droba,  $\Gamma$   $\Omega$ -Denison  
 Margaret Greenlee,  $\Gamma$   $\Omega$ -Denison  
 Louise Olney,  $\Gamma$   $\Omega$ -Denison  
 Nancy Lowe,  $\Gamma$   $\Delta$ -Purdue  
 Ruth Ann Parkinson,  $\Gamma$   $\Delta$ -Purdue  
 Barbara Hawes,  $\Delta$  O-Iowa State  
 Cynthia DeHaven,  $\Gamma$  I-Washington U.  
 Phyllis Treadway, T-Northwestern  
 Ann Mace, B A-Illinois  
 Donna Jean Simonson, B A-Illinois  
 Pat Caldwell, B Z-Iowa  
 Shirley Nichols, B Z-Iowa  
 Winifred Meyer,  $\Omega$ -Kansas  
 Althea Rexroad,  $\Omega$ -Kansas  
 Roberta Thornburg,  $\Gamma$   $\Theta$ -Drake  
 Betty Jean Allen,  $\Gamma$   $\Theta$ -Drake  
 Beverly Whalen,  $\Gamma$   $\Theta$ -Drake

Kay Mosher,  $\Gamma$  B-New Mexico  
 Jeanne Huntington,  $\Gamma$  O-Wyoming  
 Lynn Anselmi,  $\Gamma$  O-Wyoming  
 Peggy Wilson, B  $\Theta$ -Oklahoma  
 Jane Harris, B  $\Theta$ -Oklahoma  
 Betty Lou Ayers,  $\Gamma$  N-Arkansas  
 Shirley Sue Hardy,  $\Gamma$  N-Arkansas  
 Margaret McCune,  $\Gamma$  N-Arkansas  
 Haroldine Amis,  $\Delta$   $\Sigma$ -Oklahoma A. & M.  
 Mary Drummond,  $\Delta$   $\Sigma$ -Oklahoma A. & M.  
 Doreen Brackett, B II-Washington  
 Irene Hutchinson, B II-Washington  
 Kay Smith, B II-Washington  
 Gwen Dolphin,  $\Gamma$   $\Gamma$ -Whitman  
 Lorraine Hughes,  $\Gamma$  H-Washington State  
 Ann Markham,  $\Gamma$  H-Washington State  
 Anne Sporer,  $\Gamma$  Z-Arizona  
 Dianne Parr, B X-Kentucky  
 Jackie Robert,  $\Gamma$  II-Alabama  
 Anne Mandeville,  $\Gamma$  II-Alabama  
 Joanne Boyd,  $\Delta$   $\Xi$ -Carnegie Tech  
 Barbara Hall,  $\Delta$   $\Xi$ -Carnegie Tech  
 Martha Sue Blain Stevens,  $\Delta$  I-Louisiana State

## **Black Masque**

Jeane Ann Bailey,  $\Delta$  X-San Jose  
 Sally Lotz,  $\Delta$  X-San Jose  
 Patty Engerud,  $\Delta$  X-San Jose





1. Martha Nell Carter,  $\Gamma$  A-Kansas State, president, O N
2. Glenda Cotten,  $\Gamma$  M-Oregon State,  $\Phi$  K  $\Phi$
3. Betty Beitzel,  $\Delta$  A-Miami U.
4. Jane Cunningham, B M-Colorado
5. Betty Jane Acker,  $\Gamma$   $\Phi$ -SMU, being crowned Homecoming Queen, 1954; Mortar Board president; outstanding Junior girl
6. Cary Burnett,  $\Delta$  A-Miami U.
7. Amelia Bean,  $\Delta$  I-LSU
8. Harryette Bushong,  $\Gamma$   $\Phi$ -SMU
9. Joyce Brim,  $\Gamma$  H-Washington State
10. Marythelma Bryant Brinard,  $\Gamma$  B-New Mexico
11. Ann Castleton,  $\Delta$  H-Utah
12. Joan Lee Bradshaw,  $\Delta$  M-Connecticut; Junior Prom Queen;  $\Gamma$  X E
13. Dorothy Carter, B K-Idaho, treasurer







# MORTAR

1. Nanette Nelson,  $\Pi^{\Delta}$ -California
2. Mary Lynch,  $\Delta \Xi$ -Carnegie Tech
3. Louise Mosier,  $B P^{\Delta}$ -Cincinnati
4. Peggy Mitchell,  $\Delta \Delta$ -Miami U.
5. Mary Ann Power,  $B T$ -West Virginia
6. Peggy Reeve,  $\Gamma Z$ -Arizona, Year Book editor
7. Mary Pauline Nixon,  $\Gamma M$ -Oregon State, AWS president
8. Bette Jean Robinson,  $\Delta T$ -Michigan State, off.  $B \Delta$ -Michigan, president
9. Elaine Bush,  $\Gamma B$ -New Mexico
10. Cynthia Walsh,  $\Gamma \Delta$ -Purdue, activities director Student Union
11. Barbara Taylor,  $B K$ -Idaho
12. Meegan O'Connor,  $T$ -Northwestern, May Court
13. Mabel Bidlingmeyer,  $B P^{\Delta}$ -Cincinnati
14. Marilyn Mitchell,  $\Delta I$ -LSU





## BOARDS

1. Jane Dowling, Δ Ξ-Carnegie Tech
2. Ann Davis, B Ξ-Texas
3. Mary Lou Maurhoff, Δ Ξ-Carnegie Tech
4. Goye Damish, Δ Ξ-Carnegie Tech
5. Margaret Fox, B K-Idaho
6. Frances Masters, B A-Penn State, Π Λ Θ, K Δ Π
7. Jane Maxwell, B Ξ-Texas
8. Phyllis Kress, B PΔ-Cincinnati, Junior Prom Queen
9. Gretchen Hardt, H-Wisconsin
10. Marguerite McLaughlin, Γ K-William and Mary
11. J. Cynthia Frye, Γ K-William and Mary
12. Pat Galligan, H-Washington State
13. Peggy Cox, Γ Z-Arizona, AWS secretary
14. Carol Hockenson, Δ Π-Tulsa







## MORTAR BOARDS

1. Margaret Wright,  $\Gamma$   $\Phi$ -SMU,  $\Phi$  B K; School Favorite
2. Suzanne Heyer,  $\Gamma$   $\Delta$ -Middlebury,  $\Phi$  B K
3. Margaret Ange,  $\Gamma$  B-New Mexico,  $\Phi$  K  $\Phi$ ; Who's Who
4. Sandre Jean Shoults, B  $\Delta$ -Pennsylvania; outstanding Freshman award; best pledge on campus; Dean's list
5. Mary Ellen Ruth,  $\Delta$   $\Xi$ -Carnegie Tech
6. Kit Reynolds,  $\Delta$  A-Penn State
7. Marilyn Renn,  $\Gamma$  M-Oregon State,  $\Phi$  K  $\Phi$
8. Betty Folsom,  $\Gamma$  B-New Mexico,  $\Phi$  K  $\Phi$ ; Senior class vice-president; Who's Who

9. Phyllis Root, P $\Delta$ -Ohio Wesleyan, executive president AWS
10. Mary Sue Berry,  $\Delta$  I-LSU
11. Jane Scruggs,  $\Delta$  P-Mississippi
12. Darlene Tillman,  $\Delta$   $\Sigma$ -Oklahoma A & M, K  $\Delta$  II, vice-president Student Union
13. Norma McCullough, B T-West Virginia
14. Carol Lou Meyers Schubert, B P $\Delta$ -Cincinnati
15. Anne Alexander Hough, B  $\Delta$ -Michigan



## The door of Kappa dreams

There are a million doors in life and you are about to open one

In two short months you will have your first peek at the door marked "college fun."

People will tell you what to expect but you'll find you're never prepared

And when you reach for the door knob, you may be a little scared.

But fright won't linger I guarantee, soon happiness will claim your heart

And life will be one constant whirl right from the very start

You will meet a million people, yet you will be sure to agree

That the Kappa Kappa Gammas who wear the little golden key

Are the very finest type of girls you'll meet in your college days

You'll love their hospitality, admire their ideals and ways

The Kappas hold their golden key high above other symbols of fame

The key is a constant reminder of Kappa's well-known name

She shines o'er the hearts of a thousand KKG's

Here in the land of plenty and far across the seas.

The fleur de lis is the flower which grows in Kappa-land  
The blue and blue is a brilliant hue that shines on our happy band

The wise old owl knows a Kappa heart and what lies there within

On sight of these symbols a Kappa's vow is renewed again and again

If you are looking for something to unlock that college door

I suggest that you remember the Kappa Key for that's what you're looking for

The key will not only open your door but also will open your eyes

To a garden of blue and darker blue neath the bluest of summer skys

Kappa hearts will open wide and bid you enter there

Kappa lips will sing their songs of sisterhood you will share

Kappa hands will clasp your own and guide you on your way

Kappa ideals will go before and keep you from drifting astray

You will hum the tune of a KKG and gladly you will do so

For when you are a Kappa girl you want the world to know

That you have found what you sought for so long

You have found the place where you truly belong

With these thoughts the Kappas bid you goodnight

Dream a Kappa dream, sleep well, sleep tight

We hope your dark dreams will fade to lightest blue

And in your cloud of slumber may the key come shining through.

SUZANNE CARLILE,  $\Delta$   $\Sigma$ -Oklahoma A & M  
*Written for the preferential skit*

## Fair showman



At the Kansas State Fair at Hutchinson, Elaine Olsen,  $\Gamma$  A-Kansas State, showed her junior age Aberdeen Angus steer, which was reserve champion Aberdeen Angus. He took a championship at the American Royal in Kansas City in 1953 in the junior division. Elaine is tiny, but she is a top flight cattle showman and already well known in this profession although she is strictly an amateur. She had the unusual distinction in 1952 of winning the state 4-H beef championship, which has always before and since gone to a boy. She has shown grand champions at all the Kansas fairs and had several winners at the American Royal and Fort Worth national stock expositions. Year after year she has taken first place for showmanship in 4-H national shows and has dozens of national stock awards.

A major in animal husbandry and agricultural journalism, Elaine is anxious to get an international farm youth exchange scholarship to live and study agriculture abroad for six months. She would prefer to go to South America because of the cattle they raise there. She intends to go into the cattle business when she gets out of school.

There are many Kappas having many accomplishments in many fields, but Elaine is undoubtedly the only cattle showman who wears a Kappa key.

ELIZABETH GUY PETTIT,  $\Omega$ -Kansas

## Studies for foreign career



Sharmon Steen,  $\Gamma$   $\Xi$ -UCLA, following receipt of her BA degree in 1953, enrolled at the American Institute for Foreign Trade at Phoenix, Arizona, where she is studying for a career with American business or government abroad.



## **Delta Omega installed at Fresno State** *(Continued from page 6)*

the preparation until they could be mended. Doing yeoman service and supporting these committees wherever needed were: Patricia Neal Arnold, B  $\Omega$ -Oregon, Beth Wiley Duke, B Z-Iowa, Jane Goby,  $\Delta$ -Indiana, Winifred Suhr Goldthwaite,  $\Pi^A$ -California, Patricia Hornbeak Henderson, B H-Stanford, Mary Wiggins Klusman,  $\Gamma$  B-New Mexico, Shirley Scott Lundberg,  $\Gamma$  M-Oregon State, Jackie Moore Pusey,  $\Gamma$  B-New Mexico, Doris Moody Verton,  $\Delta$  X-San Jose, and Cynthia Griffin Hansen, B  $\Omega$ -Oregon. Two alumnæ, active in the early preparations, and sorely missed by removal from the area were Virginia Newland Altrow, B  $\Phi$ -Montana, and Mary Louise Carey Herbert, B Z-Iowa.

The brightest spot in the preparation was the arrival of Mary Lou Maurhoff,  $\Delta$   $\Xi$ -Carnegie Tech, who, as graduate counselor for the new chapter, was the charming and efficient link between the Delta Kappa local and the Fresno alumnæ.

Charged with expectancy the momentous week-end of November 4-7 arrived, and with it Edith Reese Crabtree, Fraternity president, first of the impressive number of council members who were to share the installing honors. Gradually, by train, plane, and car, the mound of officers grew until it included Mary Turner Whitney, vice-president, Clara O. Pierce, executive secretary-treasurer, Eleanor Goodridge Campbell, director of membership, Ruth Armstrong Harris, director of philanthropies, Helen Leonard Frank, Kappa province director of chapters, and Claire Drew Walker, Kappa province director of alumnæ. As a bonus, Clara O. brought Ruth Ann Tyler, field secretary, who lent her diplomacy and talents to our working mass and made the project of initiating 115 Delta Kappas an orderly accomplishment.

Beautiful Firesides were held in the lovely home of Gertrude Swift Eaton,  $\Pi^A$ -California, whose vast collection of Kappa owls grace every room. Pamela Barton Dollar,  $\Theta$ -Missouri, arranged and directed the services. Taking active parts were Emily Andrews Moulton,  $\Pi^A$ -California, Jean Ellen Marvin Easton,  $\Gamma$   $\Xi$ -UCLA, Elizabeth Wilson Buehler, Margaret Schaaf Rees, Jane Baker Willey, and Helen Leonard Frank.

The initiation of 23 charter members, seven actives, 85 alumnæ and the pledging of nine prospective members was impressive. As the sponsoring chapter, Pi Deuteron at the University of California sent Susan Burke, president, Diana Coates, Jan Kelly, Margaret Kennedy, Carol Lee Moore, Marilyn Moore, Nanette Nelson, and Margaret Taylor to lend their valuable support. They were ably assisted by actives Betty Turner, Florence Grey, Phyllis Johnson, Emily Ann Meyer, Doris Mortara, Shirley Strahl, Alice Westfall, Jan Wilson, Sandra Williams, and Sue Ann Zimmerman from  $\Delta$  X-San Jose; Jean Smuts,  $\Delta$  T-USC; and Diana Mann,  $\Gamma$   $\Xi$ -UCLA.

The Sunnyside Country Club was the perfect setting for the festive and beautiful banquet, arranged by Jane Dearing, B H-Stanford, and Ruth Griffith Einstein,  $\Pi^A$ -California. The stunning table arrangements of blue tinted loquat and ivy leaves, flanked by dark blue candles were the handiwork of Elizabeth Peter Knapp,  $\Gamma$   $\Xi$ -UCLA. Hand embroidered fleur-de-lis by the nimble fingers of Adelaide Stewart MacAlpine,  $\Pi^A$ -California, distinguished the sachet favors that were given to each initiate.

Hespera Hougham Mikesell,  $\Gamma$   $\Omega$ -Denison, the inspired toastmistress, paid tribute to the array of notables at the head table. Besides the council, there were Alice Anne Longley Roberts, I-DePauw, chairman of chapter personnel, Allison Hales deLaveaga, B  $\Omega$ -Oregon, past province president, and Alice Smith Fowler, B  $\Gamma$ -Wooster, and Olivia Vogel McCadle, charter member of B H-Stanford, proud wearers of the Kappa fifty year award as well as members of the Fresno alumnæ association, and Evelyn Wright, dean of women at Fresno State College, who delivered a sincere welcome.

It has been almost three years since the last installation of a national fraternity at Fresno State College. The coming of Kappa Kappa Gamma to the campus has inspired refreshed interest and enthusiasm from community and college alike. As a result the Sunday reception, at the home of Adelaide Stewart MacAlpine, to introduce the new chapter, Delta Omega, was a triumphant culmination of the week-end activities.



# PLEDGES

(Pledges reported from March 1, 1954 to January 31, 1955)

## Alpha Province

### BETA BETA DEUTERON—*St. Lawrence University*

Jeanne Cairns, Northport, N.Y.; Bonnie Jean Laidlaw, Hudson, N.Y.; Patricia Reichart, New Canaan, Conn.; Lila Scribner, Forrest Hills, N.Y.; Judith Bartley, Binghamton, N.Y.; Judith Burford, Teaneck, N.J.; George-Ann Doty, Winnetka, Ill.; Betty Green, Watertown, N.Y.; Penelope Kapp, Tuckahoe, N.Y.; Judith Lennon, Whitesboro, N.Y.; Patricia Lincoln, Alicia Mahoney, Joyce Perrin, Manhasset, N.Y.; Ruth Reeves, Pottsdam, N.Y.; Nancy Robinson, Ithaca, N.Y.; Katherine Sauers, White Plains, N.Y.; Virginia Taylor, E. Northport, N.Y.; Jane Van Schoick, Cobleskill, N.Y.; Joellyn Webster, Greenwich, Conn.; Nancy Wells, Canton, N.Y.; Barbara Mae Andrews, Ballston Spa, N.Y.; Carol Ann Davis, Glen Head, N.Y.; Istar Louise Haupt, S. Egremont, Mass.; Barbara Jane Wolberg, New York City, N.Y.; Arlene Wolf, Bloomfield, N.J.

### PHI—*Boston University*

Sonja Corneliusen, Needam, Mass.; Carol Hood, Newton Centre, Mass.; Jane S. Chase, Watertown, Mass.; Nancy Handford, Winchester, Mass.; Karen Hensel, Larchmont, N.Y.; Mary Elizabeth Hewitt, Winterport, Maine; Lois Heyl, Wilmington, Delaware; Eileen Houlihan, Arlington, Mass.; Sandra Liakos, Belmont, Mass.; Jean Palmer, Wollaston, Mass.; Mary Elizabeth Stephen, Wellesley, Mass.; Janine Thierry, Newtonville, Mass.; Ella Tracy, Kingsley, Pa.; Constance Waterman, New Britain, Conn.; Mary Lucretia Winsor, Newton, Mass.; Mary Catherine Schriever, Normandy Beach, N.J.

### BETA TAU—*Syracuse University*

Clemence Barber, Larchmont, N.Y.; Nancy Brown, Fox River Grove, Ill.; Edna Clark, Silver Springs, Md.; Barbara Crampton, Rockaway, N.J.; Virginia Eustis, Buenos Aires, Argentina; Elissa Gillert, Yonkers, N.Y.; Mary Jane Glindeman, Kenmore, N.Y.; Anne Israel, Warren, Pa.; Elaine Mellott, White Plains, N.Y.; Berit Nilsson, Cliffside, N.J.; Helen O'Hara, Syracuse, N.Y.; Marylee Palmatier, Norwich, N.Y.; Margaret Patterson, New York, N.Y.; Joan Potter, New Brunswick, N.J.; Nancy Reagan, Texana, Arkansas; Sandra Ungerman, Brenda Van Luven, Erie, Pa.

### BETA PSI—*University of Toronto*

Catharine Blackie, Mary Ferrie, Ann Ganong, Anne Kemp, Sheila Kemp, Patricia Laird, Heather McLean, Beverly Minihinnick, Toronto, Ont.; Patricia Pequegnat, Port Elgin, Ont.; Sarah Thornton, Galt, Ont.; Margaret Yardley, Hamilton, Ont.

### GAMMA LAMBDA—*Middlebury College*

Elizabeth Linberg, Cape Elizabeth, Me.; Suzanne Babidge, Brooklyn, N.Y.; Martha Ann Boyer, Summit, N.J.; Judith Clement, Chappaqua, N.Y.; Margaret Dwinell, Chicago, Ill.; Florence Everest, Council Bluffs, Iowa; Julia French, Trenton, N.J.; Judith Hart, Maplewood, New Jersey; Margaret Houck, Oak Park, Ill.; Corliss Knapp, Larchmont, N.Y.; Adrienne Littlewood, Manhasset, N.Y.; Eleanor Maier, Hastings-on-Hudson, N.Y.; Suzanne Mersereau, Endicott, N.Y.; Carlotta Paetow, West Hempstead, N.Y.; Eleanor Rhoad, Windsor, Vt.; Harriet Ross, Tenaflly, N.J.; Julie Stone, Key West, Fla.; Barbara Wicks; Marion Keith, Braintree, Mass.; Patricia Miller, Short Hills, N.J.

### DELTA DELTA—*McGill University*

Judith Angier, Framingham, Mass.; Frances Ballantyne, Margot Brock, Janet LeDain, Montreal, Que.; Shirley Ewing, Mashaba, Southern Rhodesia; Mary Ann McNab,

Grand'mere, Que.; Sherle Perkins, Perth, Ont.; Ann Rainnie, Mahone Bay, Nova Scotia; Judith Reid, Windsor, Ont.; Barbara Shipman, Donnacona, Que.; Elizabeth Vale, Westmount, Que.; Jocelyn Wiley, Shaker Heights, Ohio; Carole Williams, Carleton Place, Ont.

### DELTA NU—*University of Massachusetts*

Nancy Konopka, East Hampton, Mass.; Hester Vann, Ithaca, N.Y.; Mary-Ellen Boland, Pittsfield, Mass.; Margery Bowman, Nancy Telfer, Medford, Mass.; Terrill Corkum, Stoneham, Mass.; Norma Ellis, Carol Hines, Needham, Mass.; Nance Grandchamp, Holyoke, Mass.; Lois Hanlon, West Quincy, Mass.; Carole Humphrey, Swampscott, Mass.; Audrey Humphriss, Easthampton, Mass.; Joan Murphy, Newton, Mass.; Sondra Reedy, Ipswich, Mass.; Sondra Sable, Pittsfield, Mass.; Sheila Scott, Greenfield, Mass.; Anne Thompson, Norwood, Mass.; Christa Weinberger, Orleans, Mass.; Jennifer Wrightson, Sharon, Mass.

## Beta Province

### GAMMA RHO—*Allegheny College*

Nance Ailes, Carol Wehrle, Anne Dearing, Dolores Huffington, Joyce Nickmeyer, Pittsburgh, Pa.; Dawn Bouse, Euclid, Ohio; Marilyn Brewster, Columbus, Ohio; Marjorie Buisch, New Kensington, Pa.; Janet Clark, Williamsville, N.Y.; Susan Cook, Ligonier, Pa.; Nora Dambaugh, Beaver, Pa.; Catharine Ayers, Cleveland Heights, Ohio; Joyce Conley, Allison Park, Pa.; Katherine Johnson, Meadville, Pa.; Marjorie Jones, Bridgeville, Pa.; Nora McKee, Wilkensburg, Pa.; Patricia Miller, West Orange, N.J.; Dixie Lee Myers, Mentor, Ohio; Christine Orrell, Geraldine Stein, Canton, Ohio.

### BETA ALPHA—*University of Pennsylvania*

Elena Santa Maria, Wawa, Pa.; Barbara Brettle, Luise Kaspercit, Quita Woodward, Philadelphia, Pa.; Frances Aruffo, Upper Darby, Pa.; Elizabeth Davis, Ticonderoga, Pa.; Ann Edgerton, Wyomissing, Pa.; Agnes Hill, Malvern, Pa.; Barbara Jones, Bryn Mawr, Pa.; Marie Little, Bala Cynwyd, Pa.; Nancy McNichol, Penn Valley, Pa.; Bernadette Meehan, Spring Lake, N.J.; Ann Moore, Wewoka, Okla.; Elizabeth Morrill, Annapolis, Maryland; Katherine Ribble, Lansdowne, Pa.; Jane Rusk, Williamsport, Pa.; Meredith Smith, Merion, Pa.; Gail Watson, Ruxton, Md.; Deborah Winnie, Lansdowne, Pa.

### GAMMA EPSILON—*University of Pittsburgh*

Nancy Negley, Pittsburgh, Pa.

### DELTA ALPHA—*Pennsylvania State College*

Lucille Buck, Suzanne Capper, Dorothy DeMay, Valerie Fife, Anne Wenzel, Mary Mergott, Pittsburgh, Pa.; Marjorie Blank, Greensburg, Pa.; Elizabeth Elliott, Chester, Pa.; Helen Forbes, State College, Pa.; Jean McMahon, Williamsport, Pa.; Meredith Miller, Washington, D.C.; Mary Phillips, Scranton, Pa.; Margaret Porter, Bala Cynwd, Pa.; Nancy Scholl, Suzanne Scholl, Glenshaw, Pa.; Marilyn Seltzer, Lansdowne, Pa.; Marjorie Wilson, Marlene Wells, Philadelphia, Pa.; Katherine Sauer, Cranford, N.J.

### DELTA MU—*University of Connecticut*

Margaret Brown, Long Island, N.Y.; Carole Carrano, Velvys Heskiss, Fairfield, Conn.; Julia Darby, Newtonville, Mass.; Barbara Ann Dower, Hartford, Conn.; Judith Eanes, Arlington, Va.; Joan Flavin, Waterbury, Conn.; Nancy Griffin, Staten Island, N.Y.; Georgia Halford, West Hartford, Conn.; Gail Harding, New London, Conn.; Mary Eleanor Jack, Blandford, Mass.; Carolyn Lakatos, Stratford, Conn.; Patricia Long, Nauga-



tuck, Conn.; Gail Martin, Marilyn Softy, Hamden, Conn.; Nancy Rand, Forestville, Conn.; Elise Rutledge, Elmira, N.Y.; Jocelyn Sket, Fair Lawn, N.J.; Barbara Tindall, Ardmore, Pa.; Lois Wagner, White Plains, N.Y.; Judith Watt, Redding Ridge, Conn.; Joan Weatherley, Bridge-water, Conn.

#### **DELTA XI—Carnegie Institute of Technology**

Mary Berglund, Mentor, Ohio; Patricia Briggs, Dorothy Casey, Helen McShane, Lavonne Deeter, Patricia Dimling, Anne Kammer, Pittsburgh, Pa.; Beverly Hughes, Youngstown, Ohio; Janet Jerles, Canton, Ohio; Antoinette Lane, Frederick, Md.; Stephanie Mackay, New York City, N.Y.; Mary Louise McClure, Euclid, Ohio; Barbara Schultz, Glencoe, Ill.; Elizabeth Suesserott, West Caldwell, N.J.; Ann Mehler, Sharpsville, Pa.

#### **DELTA PHI—Bucknell University**

Jacqueline Nitz, Grand Rapids, Mich.

## **Gamma Province**

#### **LAMBDA—University of Akron**

Katherin Ongley, Virginia Demshaw, Janet Wells, Akron, Ohio; Barbara Ann Huston, W. Richfield, Ohio; Myrtle Anderson, Judith Dawson, Judy Ellis, JoAnn Joseph, Helen Koehl, Linda Thompson, Akron, Ohio; Carole McGuckin, Di-ne Spencer, Cuyahoga Falls, Ohio.

#### **RHO DEUTERON—Ohio Wesleyan University**

Carolyn Kyes, Bloomfield Hills, Mich.; Sally Reich, Westport, Conn.; Caroline Kreisel, Kingston, Ohio; Carolyn Alexander, Rhoda Rippey, Kay Simmerman, Patricia Taylor, Cincinnati, Ohio; Mary Hall, Adelaide Kieser, Toledo, Ohio; Elizabeth Anderson, Arlington, Va.; Mary Axe, Lakewood, Ohio; Rosemary Baxter, Marion, Ohio; Dolores Buddie, Youngstown, Ohio; Jane Caldwell, Ashville, Ohio; Judith Grady, Chula Vista, Calif.; Marilyn Hughes, Denver, Colo.; Leitsa Katsampes, Zanesville, Ohio; Doris Keller, Orchard Park, N.Y.; Kathryn Keller, Detroit, Mich.; Marjorie Kidd, Columbus, Ohio; Nancy Kiphart, Anne Newman, North Plainfield, N.J.; Barbara Merwin, East Palestine, Ohio; Jacquelyn Miller, Evanston, Ill.; Mary Sabroske, Fremont, Ohio; Margaret Staples, Nashville, Tenn.; Bettejane Wark, Bay Village, Ohio; Carolyn Mary Willisford, Cuyahoga Falls, Ohio.

#### **BETA NU—Ohio State University**

Barbara Barnhart, Carol Ann Haas, Chillicothe, Ohio; Ann Beggs, Cincinnati, Ohio; Sally Bowerman, Deborah Dunn, Margaret Geygan, Lois Lamb, Jennifer Lisle, Jane McGavran, Helen Minton, Carolyn Ramsey, Mary Louise Robinson, Carolyn Secrest, Kathleen Wahlenmaier, Lois Wedberg, Joyce Wilcox, Columbus, Ohio; Barbara Burdick, Fremont, Ohio; Barbara Butts, Worthington, Ohio; Marilyn Doll, Milford, Ohio; Sue Heskamp, Lakewood, Ohio; Janet Hohman, Middletown, Ohio; Sondra Jeanne Ishee, Middlefield, Ohio; Patricia Justice, Hebron, Ohio; Frances Koch, New Lexington, Ohio; Susan Nicholson, Coral Gables, Fla.; Carol Rose, Dublin, Ohio; Jacqueline Smith, Circleville, Ohio; Ruthann Stanfield, Westerville, Ohio; Phyllis Tuck, Lakewood, Ohio; Sally Willey, Newark, Ohio; Jan Williams, Brecksville, Ohio.

#### **BETA RHO DEUTERON—University of Cincinnati**

Jeanette Ainsworth, Oklahoma City, Okla.; Nancy Anderson, Helena Anderson, Sally Claussen, Barbara Cottingham, Susan Dieckmann, Janet Gaudin, Morton Gusweiler, Mary Heathcote, Louise Jacobs, Kay Pfeister, Deborah Muster, Betty Ann Merydith, Carolyn Niehaus, Sally Pattishall, Gail Robbins, Margaret West, Lucille McGee, Cincinnati, Ohio; June Brown, Indianapolis, Ind.; Martha Livingston, Hendersonville, N.C.; Virginia Zeller, Columbus, Ohio.

#### **GAMMA OMEGA—Denison University**

Catherine Lough, Greenfield, Ohio; Ann Allison, Bexley, Ohio; Patricia Boyle, De Kalb, Ill.; Susan Bryson, Jean Simon, Pittsburgh, Pa.; Elizabeth Depew, Glendale,

Mo.; Harriet Droba, Glencoe, Ill.; Margaret Huff, Louisville, Ky.; Mary Joern, LaGrange, Ill.; Judith Johnson, Granville, Ohio; Ruth Johnston, Cincinnati, Ohio; Susan Jordan, Chicago, Ill.; Judith Loughry, Eleanor Rosene, Shaker Heights, Ohio; Roberta Meyer, Snyder, N.Y.; Ellen Moore, Maumee, Ohio; Anne Morris, Painesville, Ohio; Carolyn Neff, Lake Forest, Ill.; Patricia Nickels, Akron, Ohio; Alexandra Paul, Jamesville, N.Y.; Helen Sawyer, Nausser Lane, N.J.; Julia Sellers, Akron, Ohio; Carol Shanesy, Ann Weldon, Evanston, Ill.; Marguerite Svensson, Palatine, Ill.; Judith Timms, Elyria, Ohio.

#### **DELTA LAMBDA—Miami University**

Margaret Ault, Glendale, Ohio; Arden Beardsley, Findlay, Ohio; Gail Black, Susan Bruere, Toledo, Ohio; Karen Brown, Medina, Ohio; Patricia Bulow, Hamilton, Ohio; Joyce Cutler, Joane Donaldson, Glen Ellyn, Ill.; Eleanor Davis, Nancy Ries, Columbus, Ohio; Shirley Duquette, Martha Eckert, Cincinnati, Ohio; Julia Hurt, West Jefferson, Ohio; Constance Koepke, Worthington, Ohio; Elsa Parrott, Athens, Ga.; Judith Paynter, Wilmette, Ill.; Maribeth Riley, Ann Arbor, Mich.; Judith Schaepe, Hinsdale, Ill.; Patricia Schinagle, Cleveland, Ohio; Charlotte Schurene, Dayton, Ohio; Gretchen Van Tassel, Oxford, Ohio; Margaret Wills, Memphis, Tenn.; Catherine Wixom, Vermont, Ill.; Anita Woods, Indianapolis, Ind.; Olive Dedrick, Merrick, N.Y.; Nancy Notzold, W. Lafayette, Ohio.

## **Delta Province**

#### **DELTA—Indiana University**

Suzanne Buck, Logansport, Ind.; Jane Harbottle, Dayton, Ohio; Inger Anne Wold, Peru, Ind.; Nancy Jean Currier, Wilmette, Ill.; Nancy Ann David, Logansport, Ind.; Kathleen Hartnett, Evansville, Ind.; Carolyn Holder, Monticello, Ind.; Cynthia Knowles, Attica, Ind.; Martha Ann Ritter, Ft. Wayne, Ind.; Phyllis Ann Robinson, New Castle, Ind.; Elizabeth Schnaiter, Martinsville, Ind.; Mamie Lou Smallwood, Haddonfield, N.J.; Suzanne Smith, Richmond, Ind.; Judy Lee Switzer, New Albany, Ind.; Marjorie Scheidler, Nancy Jones, Frankfort, Ind.; Janet Bechtold, Emily Jane Crowder, Marilyn Grebe, Ibbey Zoe Metersker, Patricia Moll, Constance Roberts, Indianapolis, Ind.; Barbara Meyer, Nancy Lee Voelz, Columbus, Ind.

#### **IOTA—DePauw University**

Patricia Barnes, Logansport, Ind.; Beverly Ann Bergeson, Merriam, Kan.; Victoria Denny, Union, Mo.; Barbara Detchon, Pamela Ulrey, Indianapolis, Ind.; Edna Dix, Wooster, Ohio; Anne Earhart, Huntington, Ind.; Barbara Geisler, Michael Merson, Canton, Ohio; Alison Hunter, Lake Geneva, Wis.; Rosalyn Huyette, LaPorte, Ind.; Julia Kiesselbach, Bloomington, Ill.; Lee Lewis, Barrington, Ill.; Mary Martin, Hinsdale, Ill.; Joellen McFarland, Springfield, Ill.; Kay Orr, Normal, Ill.; Sue Plasket, Fort Wayne, Ind.; Sally Pottle, Prairie Village, Kan.; Jane Powell, Sullivan, Ind.; Linda Stang, Columbus, Ind.; Sue Sutter, Marion, Ind.; Nancy Young, Findlay, Ohio; Sandra Swisher, Columbus, Ohio.

#### **MU—Butler University**

Evelyn Anderson, Jill Douglass, Julie Bierce, Ruthann Crippen, Barbara Dolen, Allison Dyer, Katy Everett, Karen Moore, Patricia Parkinson, Donna Louise Spring, Edna Kay Wurster, Indianapolis, Ind.; Delinda Reeves, Sara Jane Bartle, Knightstown, Ind.; Margaret Clay, Shelbyville, Ind.; Joyce Cripe, Flora, Ind.; Janette Fitzsimons, Grosse Pointe, Mich.; Myrna Hickman, Waukesha, Wis.; Carolyn Mustard, Kokomo, Ind.; Jan Sherritt, Shelbyville, Ind.; Nancy Snell, Hartford City, Ind.; Janet Snyder, Marion Ind.; Carol Stebbings, Park Ridge, Ill.

#### **KAPPA—Hillsdale College**

Joanne Armstrong, Western Springs, Ill.; Noel Cloutier, Barbara Lyndall, Janet Symons, Birmingham, Mich.; Sandra Evans, Johnstown, Ohio; Judy Fairgrieve, Mary Schreiner, Lakewood, Ohio; Winifred George, Joy



Venola, Detroit, Mich.; Donna Georgi, Barbara Kasper, Grosse Pointe, Mich.; Elizabeth Hardy, Chicago, Ill.; Barbara Jerome, Traverse City, Mich.; Jean MacKenzie, Webster Groves, Mo.; Constance Miller, Benton Harbor, Mich.; Suzanne Reed, Marjorie Rosecrance, Rockford, Ill.; Patricia Rice, Flint, Mich.; Winifred Welch, Northville, Mich.

#### BETA DELTA—University of Michigan

Susan Arnold, Glencoe, Ill.; Patricia Ann Booze, Mary Knecht, Birmingham, Mich.; Nancy Louise Crawford, Berkley, Mich.; Jacqueline Cremen, Chevy Chase, Md.; Mary Ann Dwan, Washington, D.C.; Shelley England, Traverse City, Mich.; Carol Guy, Detroit, Mich.; Mary Hague, Flushing, Mich.; Emily Harding, Jane Joachim, Grosse Pointe, Mich.; Mary Margaret Johnston, Cloyne, Ont., Can.; Mary Ann Klauer, Milwaukee, Wis.; Sallie Laube, Lakewood, Ohio; Mary Lou Monger, E. Grand Rapids, Mich.; Jane Prindle, Chicago, Ill.; Mary Sclaro, Walled Lake, Mich.; Patricia Skelly, Jackson, Mich.; Suzanne Thayer, La Grange, Ill.; Rachel Tiedke, Saginaw, Mich.

#### DELTA GAMMA—Michigan State College

Judith Lords, Grand Rapids, Mich.; Dolores Owen, Cleveland, Ohio; Ana Maria Bundesen, Grosse Pointe, Mich.; Joan Mary Curto, Park Ridge, Ill.; Nancy Ann Dewsbury, Northville, Mich.; Nancy Ann Donnelly, Sault St. Marie, Mich.; Jane Foster, Jenkintown, Pa.; Janet Harris, Adrian, Mich.; Mary Lee Hughes, Detroit, Mich.; Susan Johnson, Toledo, Ohio; Kay Barker Kloosterman, Muskegon, Mich.; Janet Kwaizer, Saginaw, Mich.; Phyllis Jean Loesel, Frankenmuth, Mich.; Patricia McClymont, Lincoln Park, Mich.; Ann Mickelson, Kalamazoo, Mich.; Patricia Putnam, Grosse Pointe Farms, Mich.; Virginia Saum, Wayne, Ill.; Julie Ann Wass, Eastport, Maine; Patricia Williams, Hinsdale, Ill.; Catherine Ann Eddy, Sandra Fiebach, Margo Harrison, Sandra Sue Toothaker, Lansing, Mich.; Barbara Mae Haughwout, Wayne, Mich.; Judith Hoover, Mary Kay Vogelsang, Grand Rapids, Mich.

## Epsilon Province

#### ALPHA DEUTERON—Monmouth College

Jacqueline Berry, Rio, Ill.; Susan Buck, Sara Horner, Joan Watt, Monmouth, Ill.; Catherine Lynn, Beverly Carlson, Evanston, Ill.; Diana Burgess, Lincolnwood, Ill.; Sally Dienst, Aurora, Ill.; Catherine Dittmar, Seattle, Wash.; Jane Eddy, Barrington, Ill.; Margery Heaton, Toulon, Ill.; Lynne Lommen, Palatine, Ill.; Sandra Mason, Chicago, Ill.; Zoe Miller, Earlville, Ill.; Marolyn Short, Des Moines, Iowa; Jane Weir, Gladstone, Ill.

#### EPSILON—Illinois Wesleyan University

Alice Avedisian, Elmhurst, Ill.; Lois Ekeblad, Forest Park, Ill.; Nancy Bartlow, Rushville, Ill.; Mary Ockay, Jenny Lind Ronneberg, Charleen Compton, Chicago, Ill.; Phyllis Wolf, Rock Falls, Ill.; VarDeen Eden, Judith Holtsberg, Pekin, Ill.; Sayra Lue Foster, Princeville, Ill.; Doris Freese, Chicago Heights, Ill.; Kay Henderson, Jerseyville, Ill.; Roberta Herbst, Washington, Ill.; Janice Kemp, Paxton, Ill.; Claire Jones, Springfield, Ill.; Ann Frances McCausland, Wheaton, Ill.; Patricia McFarlin, Harvard, Ill.; Jacqueline Painter, Suzanne Wasmund, Hammond, Ind.; Alice Woodman, Waukegan, Ill.; Lois Sandra Brent, Yonkers, N.Y.; Carol Anna Colson, Moline, Ill.; Sharon Lee Gray, Waukegan, Ill.

#### ETA—University of Wisconsin

Helen Jane Rehbein, Appleton, Wis.; Julia Bartlett, Rockford, Ill.; Sarah Benzies, Baraboo, Wis.; Carole Ann Birkett, Janet James, Kathleen Kirscher, Milwaukee, Wis.; Virginia Bock, Susan Edgerton, Audrey Hobbins, Carol Larson, Elizabeth McCance, Claudia Schroeder, Madison, Wis.; Claire Brick, Nancie Christensen, Wausau, Wis.; Helen DeHaven, Minneapolis, Minn.; Jeremy Farrell, Wichita, Kan.; Susan Franklin, River Forest,

Ill.; Mary Ann Frye, Peoria, Ill.; Judith Graves, Darien, Conn.; Christine Harding, Wauwatosa, Wis.; Lynn Kenworthy, Des Moines, Iowa; Mary Mead, Wisconsin Rapids, Wis.; Katherine Miller, Burlington, Wis.; Mary O'Brien, Omaha, Neb.; Priscilla Pritchard, Coral Gables, Fla.; Catherine Reed, Anchorage, Alaska; Sylvia Seefurth, Winnetka, Ill.; Pamela Sturgis, Marblehead, Mass.; Marie Tjoflat, St. Louis, Mo.; Ana Maria Vivanco, Miraflores, Lima, Peru; Cordelia Wagner, Chicago, Ill.; Barbara Walker, Chevy Chase, Md.; Nancy Walters, Peoria, Ill.; Susan Ward, Rye, N.Y.; Nancy McVeigh, Susan Ornst, Wauwatosa, Wis.

#### CHI—University of Minnesota

Zonne Armstrong, Long Lake, Minn.; Diane Bryant, Virginia Burris, Mary Jo Cronin, Rosamond Gilbertson, Lois Leivestad, Kallitsa Mavroulis, Mary Alice Proctor, Jane Sugden, Martha Von Eschen, Minneapolis, Minn.; Catherine Coult, Fairmont, Minn.; Joanne Fretz, San Antonio, Texas; Patricia Gallagher, Allentown, Pa.; Mary Ellen Gildner, Austin, Minn.; Sue Haxton, St. Paul, Minn.; Carolyn Moore, Hopkins, Minn.; Virginia Opstad, White Bear Lake, Minn.

#### UPSILON—Northwestern University

Audrey Heinemann, Lynn Latta, Milwaukee, Wis.; Janet Hofman, Nanette McMahon, Grosse Pointe, Mich.; Ann Mary Kostakos, Jean McFadden, Evanston, Ill.; Jane Biebel, Dayton, Ohio; Anne Black, Baltimore, Mo.; Mary Ann BonDurant, South Bend, Ind.; Jane Boyd, Holland, Mich.; Barbara Bullock, Saginaw, Mich.; Gabriella Dreher, Farmingham Center, Mass.; Amy Lou Dunkelberg, Pekin, Ill.; Julia Forsyth, Webster Groves, Mo.; Suzanne Foster, Pittsburgh, Pa.; Sarah Franzheim, Wheeling, W.Va.; Sandra Hannah, Ann Arbor, Mich.; Jill Hastings, Akron, Ohio; Mary Herlin, Ripon, Wis.; Barbara Hoffman, St. Louis, Mo.; Janice Klingler, Des Moines, Iowa; Stephanie Koch, Peoria, Ill.; Sally Lockwood, Fairfield, Conn.; Julia Madden, Winnetka, Ill.; Mary Mann, Richmond, Ind.; Mary Markley, Bluffton, Ind.; Caryl Nelson, Lake Bluff, Ill.; Madelon Schott, Cincinnati, Ohio; Maryanne Telfer, Wauwatosa, Wis.; Jay Topping, West Orange, N.J.; Sydney Wallis, Kansas City, Mo.

#### BETA LAMBDA—University of Illinois

Sally Barton, Chicago, Ill.; Margery Burger, Webster Groves, Mo.; Ruth Renfer, Saudi Arabia; Peggy Scott, Moline, Ill.; Mary Adsit, Pontiac, Ill.; Marjorie Bean, Washington, Ill.; Patricia Bliss, Taylorville, Ill.; Barbara Burr, Ottawa, Ill.; Barbara Dixon, Western Springs, Ill.; Martha Gross, LaPorte, Ill.; Helen Hughes, Woodstock, Ill.; Jane Lombard, Decatur, Ill.; Janet Nichols, Tuscola, Ill.; Karen Louise McCarthy, Anderson, Ind.; Sara Mitchener, Peoria, Ill.; Isabel Burgess, Patricia Hagan, Champaign, Ill.; Eleanor Palm, Oak Park, Ill.; Nancy Paxton, Wilmette, Ill.; Ruthann Reinhard, Rockford, Ill.; Mary Wernecke, Skokie, Ill.; Jo Ann Williamson, Urbana, Ill.

#### GAMMA SIGMA—University of Manitoba

Anne Bright, Margaret Mitchell, Anita Wightman, Winnipeg, Man.; Marilyn Abram, Ruth Blair, Nancy Chadwick, Margaret Irwin, Sharon Kelly, Anne Munro, Carolyn Reed, Winnipeg, Man., Can.; Barbara Bacon, Fort Garry, Man., Can.; Brenda Dafoe, Tuxedo, Man., Can.; Doreen Nichol, Portage la Prairie, Man., Can.

#### GAMMA TAU—North Dakota Agricultural College

Monica Savageau, Karen Edinger, Ann Whiting, Fargo, N.D.; Winifred Paulson, Williston, N.D.; Norene Sanford, Watford City, N.D.; Ruth Mortenson, Barnesville, Minn.; Patricia Rhyne, Wheaton, Minn.

## Zeta Province

#### THETA—University of Missouri

Janet George, Plattsburg, Mo.; Mary Faurot, Elsie Fellows, Henrietta Kilburn, Lynn Overstreet, Erna Smith.



Anne Sutton, Anne Weatherly, Columbia, Mo.; Beverly Goode, Gwen Mason, St. Louis, Mo.; Sally Smith, Virginia Zimmerly, Kansas City, Mo.; Denny Allen, Katherine James, Marshall, Mo.; Margaret Coots, Platte City, Mo.; Caryl Cowan, Clinton, Mo.; Joel Goodrich, Del Mar, Calif.; Donna Grimes, St. Joseph, Mo.; Jane Harper, Mexico, Mo.; Diane Harrison, Hampton, Iowa; Helen Hartman, Carthage, Mo.; Marian Klingbeil, University, Mo.; Carol Leber, Normandy, Mo.; Mary Lou Montgomery, Joplin, Mo.; Joanne Petefish, Ladue, Mo.; Ann Van Dyne, Sedalia, Mo.; Linda Van Reen, Webster Groves, Mo.; Nancy Hobson, Webster Groves, Mo.; Christie Hoffman, Kirkwood, Mo.

#### **BETA ZETA—University of Iowa**

Ida Mae Bell, Bonnellson, Iowa; Anna Berg, Clayton, Mo.; Janet Brookman, Center Point, Iowa; Joan Nation, Rippey, Iowa; Karen Robertson, Anamosa, Iowa; Helene Peck, Diane Gibson, Pamela Stenberg, Betty Jean Tucker, Lois Williams, Des Moines, Iowa; Nancy Chesterman, Ann Eales, Sioux City, Iowa; Sara Mavis, Sara Swaney, Cedar Rapids, Iowa; Sandra Seibert, Marilyn Young, Donna Schumann, Waterloo, Iowa; Muriel Ekstrom, Davenport, Iowa; Katharine Freie, Scarsdale, N.Y.; Sarah Graham, Webster City, Iowa; Ann Heberling, Rock Island, Ill.; Linda Hill, Muncie, Ind.; Martha Hoaglin, Mt. Pleasant, Iowa; Sandra Johnson, Council Bluffs, Iowa; Janet Knutson, Perry, Iowa; Harriett Mugge, Mason City, Iowa; Beverly Peterson, Sarah Scott, Fort Dodge, Iowa; Sandra Rodawig, Spirit Lake, Iowa; Janet Walter, Warsaw, Ind.

#### **OMEGA—University of Kansas**

Marianne Anderson, Lawrence, Kan.; Nancy Bowman, Norma Bussard, Mary Ann Wells, Wichita, Kan.; Judith Bickmore, Highland Park, Ill.; Elizabeth Branine, Newton, Kan.; Alice Burton, Jaclyn Jaquiss, Helen Mitchell, JoAnn Straube, Kansas City, Mo.; Virginia Louise Child, Janice Johnson, Hutchinson, Kan.; Mary Jane Conklin, Abilene, Kan.; Joan Dixon, Rochester, Minn.; Janet Dodge, Salina, Kan.; Lorie Dudley, St. Joseph, Mo.; Katherine Graham, Leavenworth, Kan.; Janice Ijams, Lee Ann Johnston, Collette Peterman, Topeka, Kan.; Mary Lundteigen, Louisville, Neb.; Nancy O'Loughlin, Hays, Kan.; Carol Read, Dearborn, Mich.; Barbara Weigel, Dodge City, Kan.; Sara Widick, Atchison, Kan.

#### **SIGMA—University of Nebraska**

Carolyn Carter, Anne Desmond, Margot DuTeau, Helen Hawke, Jo Ann Junge, Marcia Mahn, Lincoln, Neb.; Mary Goonan, Des Moines, Iowa; Jean Craig, Rochester, Minn.; Laurie Dempster, Houston, Tex.; Marian Elder, North Platte, Neb.; Marilyn Heck, California, Mo.; Barbara Holmes, Omaha, Neb.; Marilyn Lingo, Sheila Templeton, Blair, Neb.; Dolores Roach, Sioux City, Iowa; Jane Rowan, Gurley, Neb.; Margaret Wright, Elgin, Neb.

#### **GAMMA ALPHA—Kansas State College**

Norma Jo Amis, Darlene Beeman, Carolyn Berg, Nancy Lee Howard, Topeka, Kan.; Mary Beckmeyer, Chapman, Kan.; Bette Brown, Holton, Kan.; Mary Lu Compton, Marilyn St. John, Wichita, Kan.; Lois Cowan, Newton, Kan.; Letha Craven, Ella Culpepper, Laura Lyon, Betty Riggs, Dixie Warnick; Marianne Wilkinson, Kansas City, Mo.; Gloria Cruse, Abilene, Kan.; Judith Deewall, Mary Deewall, El Dorado, Kan.; Natalie Harwood, Mary Rogers, Sandra Sue Smerchek, Marian Teare, Shirley Younkun, Manhattan, Kan.; Jan Lowderman, Alhambra, Calif.; Carolyn McGowan, Augusta, Kan.; Nancy McQueen, Phillipsburg, Kan.; Cecelia Nicholson, Great Bend, Kan.; Barbara Reusch, McPherson, Kan.; Mary Ann Rogler, Matfield Green, Kan.; Shirley Sarvis, Norton, Kan.; Barbara Siemens, Wakefield, Kan.; Jereldene Stockham, Lyons, Kan.; Avis Tromble, Lincoln, Kan.

#### **GAMMA THETA—Drake University**

Jeanine Freeman, Emmetsburg, Iowa; Barbara Berens, Bancroft, Iowa; Nancy Bilsten, Mary Beth Mouritsen, Spirit Lake, Iowa; Dolores Chapman, Ruthven, Iowa;

Mary Davis, Libertyville, Ill.; Shirley Hansell, Leon, Iowa; LaVonne Harold, Carroll, Iowa; Joyce McCuskey, Gowrie, Iowa; Ruth Ann Mills, Winterset, Iowa; Kay Nielsen, Mary Ellen Schlie, Park Ridge, Ill.; Barbara Paradis, Judith Peterson, Arlington Heights, Ill.; Evelyn Ritchey, Ottumwa, Iowa; Charlene Schlosser, Joan Stout, Karen Tavenner, Joan Thompson, Des Moines, Iowa.

#### **GAMMA IOTA—Washington University**

Marcia Bonnett, Bloomington, Ill.; Nancy Clement, Marian Green, Ladue, Mo.; Susan Ann Erwin, Kirkwood, Mo.; Amelia Felts, Carbondale, Ill.; Joan Lundstedt, University City, Mo.; Marilyn McGinty, St. Louis County, Mo.; Cicely Reiner, Anne Smith, Clayton, Mo.; Lynn Ulrici, Mehlville, Mo.; Nancy Ward, Ogden, Utah; Jane Williamson, Normandy, Mo.; Jane Brown, St. Louis, Mo.; Dolores Fornara, Atlanta, Ga.; Mary Ann Hayden, University City, Mo.; Tiia Kari, Bechtelsville, Pa.; Sarah Moore, Webster Groves, Mo.

#### **DELTA OMICRON—Iowa State College**

Keota Kay Bannister, Patricia Conn, Ames, Iowa; Sharon Briggs, Albia, Iowa; Bonnie Busby, Cedar Rapids, Iowa; Jerita Douglas, Webster City, Iowa; Mary Emde, Lodi, Calif.; Diane Fairbanks, Frances Prochaska, Muscatine, Iowa; Marilyn Graham, Webster Groves, Mo.; Carol Hopper, Sioux City, Iowa; Suzanne Kaufman, Wilmette, Ill.; Susan Kircher, West Bend, Wis.; Marlo Lange, Moline, Ill.; Katherine Loest, Calgary, Alberta, Can.; Sharon McKinstry, Des Moines, Iowa; Jane Middleton, Eagle Grove, Iowa; Betty Miller, Los Alamos, N.M.; Ellen Powers, Martha Powers, Fargo, N.D.; Mary Seaton, Hinsdale, Ill.; Dixie Lee Smith, Seaton, Ill.; Josephine Walsh, Ft. Wayne, Ind.; Mary Jo Weber, Bancroft, Iowa; Virginia Silcox, Ottumwa, Iowa.

## **Eta Province**

#### **BETA MU—University of Colorado**

Jo Ann Phipps, Park Ridge, Ill.; Judith Ross, Garden City, N.Y.; Ruth Stanton, Atchison, Kan.; Elizabeth Atwood, Minneapolis, Minn.; Miriam Barrett, Marcia Irwin, Judith Richardson, Ann Sloan, Sally Mae Vicary, Colorado Springs, Colo.; Barbara Ann Berkey, Goshen, Ind.; Alice Byram, Abilene, Tex.; Virginia Lee Day, Carolyn Paine, Kansas City, Mo.; Janet Eaton, W. Lafayette, Ind.; Nancy Emerson, San Antonio, Tex.; Beverly Evans, Rochester, Minn.; Linda Ferrill, Tulsa, Okla.; Julie Foster, Cedar Rapids, Iowa; Martha Glass, Mission, Kan.; Patricia Hurley, Danville, Ill.; Diane Jackson, Aurora, Ill.; Paula Koren, Rapid City, S.D.; Phyllis Low, Evanston, Ill.; Liliane Malone, Kalamazoo, Mich.; Martha Melin, Hinsdale, Ill.; Margaret Neir, Moline, Ill.; Nancy Penix, Wichita Falls, Tex.; Phyllis Peterson, Greeley, Colo.; Abbie Pickett, Glen Ellyn, Ill.; Kathryn Porter, Urbana, Ill.; Patricia Roberts, Nancy Simms, Tulsa, Okla.; Marnie Slocumb, Rochester, Minn.; Linda Snodgrass, Fort Morgan, Colo.; Nan Butterworth, Barbara Jo Diringier, Leslie Erskine, Anita Gehrke, Sharon Larson, Ann Magarell, Robbyn Mountjoy, Elizabeth Myer, Patricia Rankin, Carol Stroud, Jane Ruth Sumners, Dorothy Teets, Marilyn Whinnerah, Beverly Woodend, Denver, Colo.; Carol Trigg, Springfield, Ill.; Nancy Uebele, Western Springs, Ill.; Rion Viskniskii, Hinsdale, Ill.; Judith Covert, Billings, Mont.; Marianna Croes, Aberdeen, S.D.; Martha Regent, Dallas, Tex.

#### **GAMMA BETA—University of New Mexico**

Martha Bateman, Hobbs, N.M.; Louann Causey, El Paso, Tex.; Charlotte Davis, Roswell, N.M.; Patricia Fields, San Angelo, Tex.; Jocelyn Fisher, Denver, Colo.; Nancy Ann Fore, Estancia, N.M.; Mary Howorth, Avon Park, Fla.; Angela Loeffel, Winnetka, Ill.; Jayne Merchant, Las Cruces, N.M.; June Mills, Austin, Tex.; Gail Olson, Phoenix, Ariz.; Helen Pinkerton, Silver City, N.M.; Helen Smith, Farmington, N.M.; Elizabeth Corrough, Diane Holmes, Kay Leonard, Carolyn Nielsen, Beverly Orr, Janis Reeves, Helen Van Atta, Albuquerque, N.M.



**GAMMA OMICRON—University of Wyoming**

Jeri Anselmi, Rock Springs, Wyo.; Joan Black, Rawlins, Wyo.; Nancy Carson, Pinedale, Wyo.; Larue Cheney, Lander, Wyo.; Nancy Ann Clinton, Highland Park, Ill.; Shelly Coleman, Wichita, Kan.; Rustie Daniels, Big Piney, Wyo.; Kathryn Jane Goodman, Riverton, Wyo.; Gretchen Griggs, Decatur, Ill.; Roberta Luman, Pinedale, Wyo.; Marlene Merrill, Cheyenne, Wyo.; Sally Noble, Big Piney, Wyo.; Patricia Preston, Liberty, Mo.; Ruth Ann Robinson, Afton, Wyo.; Julia Walton, Greybull, Wyo.; Araminta Willis, Cowley, Wyo.; Grace Barton, Eleanor Burns, Nancy Hubbard, Muriel Mauer, Jeanne Slater, Laramie, Wyo.; Patricia Connell, Arlene Croco, Sharon Dickensheets, JoAnn Jones, Barbara Kidd, Jo Marsh, Casper, Wyo.; Gretchen Hartwig, Glenrae Jenks, Sheridan, Wyo.

**DELTA ZETA—Colorado College**

Judith Avery, Connie Little, Omaha, Neb.; Ann Babcock, Rock Ford, Colo.; Nancy Brownell, Valparaiso, Ind.; Paula Erickson, Susan Urban, Des Moines, Iowa; Andrea Jelstrup, Karne Jorgenson, Denver, Colo.; Nancy Low, Judith Reid, Colorado Springs, Colo.; Patricia McCrea, Ogden, Utah; Judith Nash, Billings, Mont.; Jane Snodgrass, Ft. Morgan, Colo.; Judith Van Epps, Phoenix, Ariz.; Norma Wolff, Tulsa, Okla.

**DELTA ETA—University of Utah**

Phyllis Burbridge, Carolyn Durham, Beverly Grubb, Carol Jacobsen, Gay Lerwill, Gay Messina, Mary Rose Middleton, Valerie Olson, Jean Okelberry, Karen Peterson, Kathleen Pinnock, Sandra Stewart, Mary Helen Susman, Sue Woolard, Adelle Woolley, Salt Lake City, Utah; Denise Dozzi, Grand Junction, Colo.; Sandy Hayward, San Mateo, Calif.; Barbara Ellis, Berkeley, Calif.; June McBride, Los Angeles, Calif.; Maryann Rasmussen, Midvale, Utah.

## Theta Province

**BETA XI—University of Texas**

Nancy Bivings, Margaret Corning, Therese Graves, Kathleen Holland, Elizabeth White, Ellen Young, San Antonio, Tex.; Martha Boss, Ellen Leaverton, Jeanne Norsworthy, Sherma Pattillo, Dallas, Tex.; Patsy Carnes, Nancy Ferguson, Ann Gill, Betty LaMaster, Antonette Tilly, Houston, Tex.; Helen Callicutt, Barbara Danall, Austin, Tex.; Florence Brown, Mary Gene McDonald, Tyler, Tex.; Beatrice Findlater, Lisa Meadows, San Angelo, Tex.; Barbara Rowan, Mariann Wilson, Ft. Worth, Tex.; Virginia Nutt, Edwina Parker, Marilyn Wheeler, Wichita Falls, Tex.; Anne Blalock, Marshall, Tex.; Richea Brown, Shreveport, La.; Phebe Carter, Pampa, Tex.; Gail Edge, Bryon, Tex.; Kay Faust, New Braunfels, Tex.; Martha Gierhart, Harriet Juergens, Corpus Christi, Tex.; Mary Harms, St. Louis, Mo.; Suzanne Huggins, Baytown, Tex.; Margaret King, Killeen, Tex.; Donna Lee, Waco, Tex.; Norma Matlock, Port Arthur, Tex.; Mary Jane McHaney, Victoria, Tex.; Mary Ann Minton, Beaumont, Tex.; Phyllis Pryor, Midland, Tex.; Patsy Rogers, San Marcus, Tex.; Anne Sanford, Rosita, Coahuila, Mex.; Carole Vineyard, Wharton, Tex.; Alice Wells, Amarillo, Tex.; Carol West, Kingsville, Tex.

**BETA THETA—University of Oklahoma**

Kay Adams, Temple, Okla.; Joyce Austin, Marilyn Brokaw, Madelyn Kidd, L'Don Richards, Shawnee, Okla.; Ann Alspaugh Andres, Margy Stipes, Carolyn Clarkson, Clara Robertson, Alice Williams, Jane Woods, Oklahoma City, Okla.; Sally Bish, Gina Dyniewicz, Virginia Jones, Patricia Sisler, Ann Welch, Tulsa, Okla.; Katherine Belknap, Carolyn Sexton, Norman, Okla.; Doris Beverley, Sheila Starks, Amarillo, Tex.; Donna Cason, Vinita, Okla.; Susan Chambers, Sally Davis, Altus, Okla.; Brenda Chesnut, Miami, Okla.; Gail Clemens, Ponca City, Okla.; Jacqueline Compton, Louann Jones, Durant, Okla.; June Cox, Catherine Biddick, Rosemary Underwood, Ardmore, Okla.; Carole Crenshaw, Sandra Gast, Peggy Potter, Bartlesville, Okla.; Alice Denny, Ft.

Worth, Tex.; Jan Dooley, Kay Hampton, Duncan, Okla.; Charley Mae Fincher, Poteau, Okla.; Joffa Gemar, Wichita Falls, Tex.; Norma Haddad, Claremore, Okla.; Susan Hopkins, Colorado Springs, Colo.; Frances King, Ada, Okla.; Claudette Leachman, Stillwater, Okla.; Lelah Price, Stratford, Tex.; Sally Ramsey, Ponca City, Okla.; Sandra Wilson, Enid, Okla.; Linda Yerg, E. Orange, N.J.

**GAMMA NU—University of Arkansas**

Barbara Ann Barber, Ft. Smith, Ark.; Beverly Boyd, Harrison, Ark.; JoAnn CaHail, Neosho, Mo.; Sarah Cearley, Sheridan, Ark.; Mary Catherine Cobb, Cynthia Dawson, Gail Elliot, Marked Tree, Ark.; Donna Jo Collision, Bald Knob, Ark.; Patsy Courtney, Elizabeth Dickinson, Phyllis Dillaha, Carolyn Housley, Marilyn Housley, Nancy Mayer, M. Carroll Treadway, Little Rock, Ark.; Joy Cox, Martha Deckelman, Dumas, Ark.; Sue Dillman, Tulsa, Okla.; Susan Eberle, Warren, Ark.; Patricia Ann Goodwin, Russellville, Ark.; Martha Hatfield, Fayetteville, Ark.; Jan Jacobs, Rogers, Ark.; Carol Lackey, Mountain View, Ark.; Alice McGinnis, Glen Ellyn, Ill.; Mary Ellen Quinn, Texarkana, Ark.; Sidney Black, Rogers, Ark.; Margaret Godwin, Hot Springs, Ark.

**GAMMA PHI—Southern Methodist University**

Barbara Abaunza, New Orleans, La.; Nancy Agee, Texas City, Tex.; Barbara Bragg, Carol Chandler, Virginia Diers, Carolyn Evans, Julie Ferguson, Clara Jones, Mary Ruth Jones, Margaret Peickert, Barbara Tate, Anne Vieaux, Dallas, Tex.; Barbara Bridgforth, Memphis, Tenn.; Carolyn Crumley, Shreveport, La.; Barbara Cutter, Webster Groves, Mo.; Patricia Dean, Marian McKinney, Phyllis Powell, Fort Worth, Tex.; Gail Griffin, McKinney, Tex.; Caroline Kendall, Tulsa, Okla.; Rose McKenzie, Tyler, Tex.; Jean Patterson, Linda Ryan, Longview, Tex.; Martha Rawling, Inca Peru; Margaret Robertson, San Angelo, Tex.; Kay Sherwood, Wichita, Kan.; Drucillia Spain, Wichita Falls, Tex.; Nita Steed, Amarillo, Tex.; Roberta Stewart, Midland, Tex.; Ann Weatherford, Corsicana, Tex.; Sara Wilson, Beaumont, Tex.; Judy Wortham, Lufkin, Tex.; Betty Helen McAfee, El Paso, Tex.

**DELTA PI—University of Tulsa**

Jane Abney, Sally Ann Hough, Fort Smith, Ark.; Nancy Ann Bostock, Martha Canterbury, Maxine Casey, Susan Casey, Irene Dickason, Cadajah Helmerich, Janet Hogan, Jan Pettypool, Tulsa, Okla.; Helen Boyd, Siloam Springs, Ark.; Dolores Deardorf, Geneseo, Kan.; Joellen Elliott, Waukegan, Ill.; Sadie Ann McCaslin, McAlester, Okla.

**DELTA SIGMA—Oklahoma Agricultural and Mechanical College**

Mary Joyce Bandelier, Joy Collins, Helen McGaugh, Carroll Noske, Romona Ware, Twyla Williams, Stillwater, Okla.; Nancy Jo Bennett, Ann Bowlin, Margaret Cupp, Dee Hustleby, Wiltoma Jones, Vivian McMillan, Karen Oldfield, Phyllis Wright, Oklahoma City, Okla.; Sue Brownlow, Janet Clerico, Saralou Goldtrap, Margie Jones, Sue Robertson, Helen Smith, Gayle Williams, Bartlesville, Okla.; Margaret Byers, Carol Caldwell, Wilma Davis, Norma Parsons, Carlotta Polk, Tulsa, Okla.; Carol Lee Cooper, Houston, Tex.; Lounora Costilow, Lawton, Okla.; Francesca Druley, Sara Mae Jones, Ponca City, Okla.; Nancy Lee Hamra, Henryetta, Okla.; Anita Harbin, Yale, Okla.; Lauretta Long, Guthrie, Okla.; Rosemary Mahaffey, Patricia McCoy, Enid, Okla.; Marjorie Nelson, Muskogee, Okla.; Jane Scott, Okmulgee, Okla.; Virginia Parsons, Laguna Beach, Calif.; Judith Patton, Cherokee, Okla.; Helen Riley, Canadian, Tex.; Janna Clare Smith, Henryetta, Okla.; Wah-Leeta Smith, Fairfax, Okla.

**DELTA PSI—Texas Technological College**

Jo Ann Miller, Big Spring, Tex.; Donna Abraham, Canadian, Tex.; Judy Anning, Houston, Tex.; Sue Applegate, Monahans, Tex.; Joanne Barney, Carol Leon, Mary Jane Clarkson, Abilene, Tex.; Virginia Brown, Otilie



Fredericks, Mary Ann Munn, Celina Roberts, Martha Schickram, Sylvia Thompson, Nina Smith, Lubbock, Tex.; Karen Campbell, Sharon Day, Clovis, N.M.; Sharon Cooper, Thalia, Tex.; George Ann Davis, Crowell, Tex.; Marion Harris, Muleshoe, Tex.; Barbara Jo Jackman, Graham, Tex.; Janelle Lewis, Brownfield, Tex.; Glenda McNeal, Midland, Tex.; Joan Roberts, Ft. Worth, Tex.; Barbara Warren, Waco, Tex.; Tommye Wieland, Helen Willis, Dumas, Tex.

#### **EPSILON ALPHA—Texas Christian University**

Kay Alson, Sweetwater, Tex.; Carol Ann Bailey, Ballinger, Tex.; Janet Barnes, Summit Electra, Tex.; Sonya Boyt, Devers, Tex.; Carolyn Falgeau, Bryan, Tex.; Dorothy Fisher, Odessa, Tex.; Barbara Glover, San Angelo, Tex.; Ronda Goynes, Amarillo, Tex.; Marci Martin, San Antonio, Tex.; Ann McArron, Breckenridge, Tex.; Diane McMurray, Decatur, Tex.; Shirley Reddell, McKinney, Tex.; Nadine Wright, Tulsa, Okla.; Frances Owens, Sarah Slay, Dallas, Tex.

## **Iota Province**

#### **BETA PI—University of Washington**

Helen Baird, Audrey Feroglia, Tacoma, Wash.; Judith Bailey, Spokane, Wash.; Linda Bird, Joan Chatalas, Louise Ensign, Margaret Evans, Storm Jobs, Sally Jovick, Sharon Lihou, Susannah Lynch, Helen McDonald, Mary Jane Richards, Lea Schegolkov, Seattle, Wash.; Linda Emmons, Wenatchee, Wash.; Janet Hart, Nancy Walker, Longview, Wash.; Diana Lennox, Honolulu, Hawaii; Anne MacDougall, Lakeside, Chelan County, Wash.; Doris Nelson, Mercer Island, Wash.; Linda Patton, Olympia, Wash.; Barbara Rudolph, Ellensburg, Wash.; Marguerite Smith, Bellingham, Wash.; Laurel Trask, Winslow, Wash.

#### **BETA PHI—Montana State College**

Susan Beckwith, Janet Woodcock, Great Falls, Mont.; Carol Bird, Seeley Lake, Mont.; Caren Connolly, Elizabeth Fahrner, Ruth Henry, Carolyn Staniger, Helena, Mont.; Lynn Curley, Ruth Gollick, Rose Marie Murphy, Anaconda, Mont.; Suzanne Dansie, Jackson, Mont.; Roberta Dixon, Ovando, Mont.; Mary Gerhardtstein, St. Regis, Mont.; Shirley Hardy, Fairview, Mont.; Kathleen Harris, Livingston, Mont.; Jean Hollingsworth, Hamilton, Mont.; Arlene Lindemann, Richardton, N.D.; Lynn McCaffery, Joan Oechsli, Butte, Mont.; Lesley Mortimer, Santiago, Chile; Susan Pearson, Lame Deer, Mont.; Ruth Pyle, Miles City, Mont.; Linda Ross, Stanford, Mont.; Gail Sturgeon, Shelby, Mont.; Shirley Wagner, Chinook, Mont.

#### **BETA OMEGA—University of Oregon**

Janice Bennet, McMinnville, Ore.; Chrissie Blakley, Bend, Ore.; Jane Burton, Marlene Harper, Patricia Hudson, Karen McDaniel, Patricia Phillips, Portland, Ore.; Sharon Ford, John Day, Ore.; Mary Fourier, North Bend, Ore.; Betty Herrman, Shirley McLean, Eugene, Ore.; Joyce Jacobson, Mary Jo Williams, Grants Pass, Ore.; Janet Maier, The Dallas, Ore.; Ann Pettersen, Coos Bay, Ore.; Lois Ralston, Lake Grove, Ore.; Diane Raoul-Duval, Burlingame, Calif.; Kathryn Thurston, Bend, Ore.; Nadine Woodroffe, Salem, Ore.; Carole Ann Wulfekuhler, Waialua, Oahu; Mary Elizabeth Carr, Hood River, Ore.; Barbara Ann Williams, Grants Pass, Ore.; Carolyn Call, Bandon, Ore.; Chloe Fairweather, Medford, Ore.; Donna Dee Miller, Gresham, Ore.; Mary M. Schouweiler, Boise, Idaho.

#### **BETA KAPPA—University of Idaho**

Carol Anderson, Mullan, Idaho; Karen Crozier, Anne Hamblin, Mildred Rawls, Janice White, Myrtle Williamson, Lewiston, Idaho; Joann Dittmer, Blackfoot, Idaho; Marcia Ellis, Wallace, Idaho; Susan Emry, Carol Warren, Spokane, Wash.; Dorothy Jacobsen, Rexburg, Idaho; Joan Matz, Moscow, Idaho; Margaret McDowell, Caldwell, Idaho; Mary Perrin, Walla Walla, Wash.; Ethelyn Poitevin, Idaho Falls, Idaho; Sue Ann Sparks, Nampa,

Idaho; Marie Van Orman, Jerome, Idaho; Irene West, Sandpoint, Idaho.

#### **GAMMA GAMMA—Whitman College**

Corinne Bellas, Wenatchee, Wash.; Rdee Brown, Great Falls, Mont.; Katherine Corley, Margaret Lake, Frances Owen, Sue Saunders, Margaret Savage, Sue Spaulding, Ann Todd, Seattle, Wash.; Judy Davis, Hutchinson, Kan.; Karen Elder, Spokane, Wash.; Elsie Faust, Denver, Colo.; Barbara Fenton, Bellevue, Wash.; Molly Longmoor, Twisp, Wash.; Judith Packard, Sandra Walker, Portland, Ore.; Melba Ross, Heriston, Ore.; Ann Sektan, Milton-Freewater, Ore.; Bernice Whittlesey, Twin Falls, Idaho.

#### **GAMMA ETA—State College of Washington**

Gretchen Baugh, Ruth Shellhorn, Elizabeth Ann White, Seattle, Wash.; Marilyn Jean Brown, Bellevue, Wash.; Bonnie Caryl Byrne, Jerene Kay Hughbanks, Carol Ann McCoy, Martha Jane Meinhardt, Sally Joanne Shaw, Spokane, Wash.; Carolyn Hensley, Centralia, Wash.; Beverly Karola, Tacoma, Wash.; Evelyn Merrin, Yakima, Wash.; Janice Owsley, Walla Walla, Wash.; Wanda Lee Rodgers, Pasco, Wash.; Nancy Ann Scheldrup, Bellingham, Wash.; Mary Anne Starr, Pullman, Wash.

#### **GAMMA MU—Oregon State College**

Joanne Bollam, Sally Gamelgard, Donna Lee Goode, Marguerite Hunt, Nadine Nutting, Marilyn Reinelt, Dorothy Rhoades, Joan Robison, Gloria Scott, Phyllis Ann Stenbakken, Ann Turnbull, Portland, Ore.; Donna Lee Caddy, Carol White, Eugene, Ore.; Sandra Carter, Judith Jackson, Salem, Ore.; Barbara Elmer, Lebanon, Ore.; Teresa Fugitt, Longview, Wash.; Mary Hale, Morgan Hill, Calif.; Molly Hanavan, Pendleton, Ore.; Ann Kirkpatrick, Condon, Ore.

#### **GAMMA UPSILON—University of British Columbia**

Anita Ayling, Sallee Ruth Brown, Patricia Irvine, Barbara Johnson, Margaret Moltzau, Vancouver, B.C.; Carol Irwin, Janet Valentine, Calgary, Alta.; Lloy Pountney, North Vancouver, B.C.; Marion Rainer, Victoria, B.C.

## **Kappa Province**

#### **PI DEUTERON—University of California**

Susan Adams, Phyllis Bell, Nancy Lee Flack, Piedmont, Calif.; Linda Bailey, Marie Casey, Sheryl Coberly, Mary Ann Garner, Joan Greer, Ann Huberty, Blair Lundy, Margaret Shea, Barbara Wiester, Los Angeles, Calif.; Patricia Bondesen, Salinas, Calif.; Lynn Brown, Ellis Kirkham, Katrine Watson, San Francisco, Calif.; Gray Burnham, Pebble Beach, Calif.; Mary Lou Coate, Carolyn Demeter, Orinda, Calif.; Huntley Cockburn, Dorothy Nathan, Pasadena, Calif.; Mary Claire Creech, Chico, Calif.; Katrine Currie, Fresno, Calif.; Berit Feragen, Ross, Calif.; Noreen Lewis, Hollister, Calif.; Judith Meyer, Sausalito, Calif.; Marvel Reynolds, Omaha, Neb.; Maryly Roney, Pacific Palisades, Calif.; Edith Stahl, Tulsa, Okla.; Claire Vallette, S. Pasadena, Calif.; Courtney Weldon, La Jolla, Calif.

#### **GAMMA ZETA—University of Arizona**

Connie Storms, Los Angeles, Calif.; Darlys Barry, Janet Burroway, Martha Field, Patricia Finley, Lynn Gardner, Janet Jones, Mary Locke, Patricia Powers, Molly Roller, Helen Tolleson, Phoenix; Mary Ellen Barry, Barbara Dillas, Lynn Edwards, Alice Mahoney, Ann Mathews, Synthe Jean North, Nadene Rykken, Jean Schell, Sylvia Taylor, Tucson, Ariz.; Janice Binkley, Denver, Colo.; Parthenia Cavins, Oxnard, Calif.; Carol Crosby, Topeka, Kan.; Toni Gilmour, Toronto, Can.; Joan Hohmann, Coolidge, Ariz.; Anne Landstrom, Rockford, Ill.; Patricia Larry, Danville, Ill.; Margaret Loflin, Dallas, Tex.; Dorothy Ann Michelbach, Flagstaff, Ariz.; Margaret Morton, Douglas, Wyo.; Nancy Murray, Hermosa Beach, Calif.; Diane Osoke, San Francisco, Calif.; Virginia Peil, Racine, Wis.; Mary Lou Prabel, Topeka, Kan.; Ellen Rollins, LaJolla, Calif.; Lynda Sourbeer, Parsons, Kan.; Karen Utke, Douglas, Ariz.; Terry Jean Williams,



Vista, Calif.; Linda Ann Way, Piedmont, Calif.; Barbara Lee Klein, Denver, Colo.

#### **GAMMA XI—University of California at Los Angeles**

Marguerite Heyn, Bonnie Jane Anderson, Martha Gilman, Elysebeth Goetten, Gay Horton, Joanne Pauley, Donna Ruedy, Lilyan Stueck, Margaret McCrady, Virginia Creamer, Claire Mueller, Los Angeles, Calif.; Linn Blackford, Hermosa Beach, Calif.; Sue Lockwood, S. Pasadena, Calif.; Asa Maynor, Sherman Oaks, Calif.; Diana Millholland, N. Hollywood, Calif.; Susan Brown, Castle, Ind.; Signe Gissberg, Long Beach, Calif.; Rose Hester, Springfield, Ill.; Ursula Jamison, Pasadena, Calif.; Marion Kagarise, Temple City, Calif.; Marcia Lou Laughlin, Gloria Ann Rainey, Pacific Palisades, Calif.; Martha MacDavid, Glendale, Calif.; Mary Odlin, San Marino, Calif.

#### **DELTA TAU—University of Southern California**

Kay Boldman, Charlotte Morgan, Beverly Hills, Calif.; Nancy Carlross, Jean McCloskey, So. Pasadena, Calif.; Paula Chace, Long Beach, Calif.; Starla Rae Coffee, Venice, Calif.; Joan Cramer, Spring Valley, Calif.; Mabel Davis, San Marino, Calif.; Carolyn Giddings, Newport Beach, Calif.; Ann Gist, San Luis Obispo, Calif.; Carole Groat, Arcadia, Calif.; Jill Halgren, Sherman Oaks, Calif.; Margaret Hastings, Balboa Is., Calif.; Mary Lou Hill, Beatrice Nichols, Pomona, Calif.; Chrissy Kazakes, Ventura, Calif.; Emily Lipp, China Lake, Calif.; Sally Marsden, Santa Monica, Calif.; Betty Martin, Van Nuys, Calif.; Mary Lee McCormick, Madera, Calif.; Georgianna Snyder, Wilmington, Calif.; Karen Steen, La Mesa, Calif.; Faye Taylor, Phoenix, Ariz.; Catherine Thomas, Chatsworth, Calif.

#### **DELTA CHI—San Jose State College**

Barbara Bennion, Edna Irvin, Helen Rose, San Luis Obispo, Calif.; Roberta Boone, Greenbrae, Calif.; Nancy Ann Burke, Patricia Smith, Los Gatos, Calif.; Janet Daugherty, Donalee Potter, Burlingame, Calif.; Theodora Jane Gehr, Santa Paula, Calif.; Marilyn La Teer, Stockton, Calif.; Barbara Jo Linder, Merced, Calif.; Eleanor Rice, Heppner, Ore.; Vivienne Andres, Campbell, Calif.; Beverly Bagley, Centerville, Calif.; Patricia Craven, Walnut Grove, Calif.; Carol Curtice, Salinas, Calif.; Helen Davis, Petaluma, Calif.; Jerry Anne Drake, Los Altos, Calif.; Erin Kavanaugh, Pacific Palisades, Calif.; Mary Leusley, Palo Alto, Calif.; Jane Munch, San Mateo, Calif.; Rita McCabe, Bremerton, Wash.; Audree Westfall, Key West, Fla.; Doris Wilkinson, Saratoga, Calif.; Betty Easton, Mary Ann Miller, June Paye, Jean Shervey, Elizabeth Wikoff, San Jose, Calif.

#### **DELTA OMEGA—Fresno State College**

Virginia Growdon, Judy Hanna, Helen Jones, Marie Landry, Henrietta Meyling, Rosamond Ryan, Janet Self, Fresno, Calif.; Yvonne McCall, Monrovia, Calif.; Jeanne Rasmussen, Hanford, Calif.

## **Lambda Province**

#### **BETA UPSILON—West Virginia University**

Catherine Butts, Nancy Seitz, Charleston, W.Va.; Mary Currence, Marlinton, W.Va.; Julia Anne Fahlgren, Jane Gerwig, Marjorie Ann Gerwig, Betsey Garmlich, Parkersburg, W.Va.; Judith Hill, Lumberport, W.Va.; Donna Jane Hughes, Priscilla Miller, Morgantown, W.Va.; Katherine Lehman, Patricia McWhorter, Sylvia Watson, Fairmont, W.Va.; Barbara Ryan, Arlington Heights, Ill.

#### **GAMMA KAPPA—College of William and Mary**

Mary Bush, Arlington, Va.; Jane Flournoy, Richmond, Va.; Letty Sheild, Warwick, Va.; Hildegard Albiez, Bridgeton, N.J.; Virginia Anding, Agnes Chandler, Norfolk, Va.; Diane Daniels, Middletown, Conn.; Marcia Day, Rochester, N.Y.; Mary Fooks, Jacqueline Wilson, Ft. Monroe, Va.; Frances Frost, Flourtown, Pa.; Gretchen Grunenfelder, Arlington, Va.; Barbara Holcomb, Kitchener, Ontario; Ellen Hunter, Jo Ann Love, Portsmouth,

Va.; Susan Knott, Cynthia Sanborn, Sioux City, Iowa; Sollace Molineaux, Metuchen, N.J.; Lila Moore, Houston, Tex.; Shirley Smith, Harrisburg, Pa.; Champe Summerson, Lee Heights, Va.; Susannah Watlington, Paris, Ky.; Keith Newton, Barbara Sylvia, Richmond, Va.

#### **GAMMA CHI—George Washington University**

Margaret Barnes, Phyllis Ann Charnley, Sarah Ann Herndon, Karen O'Beirne, Jean Peyton, Arlington, Va.; Julie Cairns, Janet Collier, Jeanne Duff, Janice Krug, Dorothea Munroe, Mary Ann Nichols, Johanna Peters, Washington, D.C.; Thelma Forrest, Bethesda, Md.; Georgine Winslett, Alexandria, Va.

#### **GAMMA PSI—University of Maryland**

Barbara Anderson, Arlington, Va.; Cecelia Caraway, McLean, Va.; Ellen Comi, Judith Larmour, Plainfield, N.J.; Mary Rose Culbert, Drexel Hill, Pa.; Barbara Denton, Claire Wolford, Chevy Chase, Md.; Althea Eccles, Bethesda, Md.; George Faw, Cumberland, Md.; Nancy Ann Gourley, Sewickley, Pa.; Jacquelyne King, Haddonfield, N.J.; Kathleen Kruger, Wynwood, Pa.; Jean Mace, Washington, D.C.; Elaine Martin, Silver Spring, Md.; Marilyn Mueller, Shaker Heights, Ohio; Cynthia Ann Piper, Hyattsville, Md.; Ellen Urban, Catonsville, Md.; Paula White, Clarksburg, W.Va.

#### **DELTA BETA—Duke University**

Judy Baer, Akron, Ohio; Barbara Barksdale, Decatur, Ga.; Jan Bierbaum, Miami Shores, Fla.; Cynthia Black, Reynoldsburg, Ohio; Carolyn Bowersox, Washington, D.C.; Ruth Bozler, Columbus, Ohio; Peggy Brueggeman, Cincinnati, Ohio; Betsy Gott, Pittsburgh, Pa.; Gibby Green, Arlington, Va.; Molly Guyer, Erie, Pa.; Grace Hall, Wollaston, Mass.; Carol Sue Meeker, Toledo, Ohio; Ginny Partlow, Highland Park, Ill.; Linda Pollock, Fort Washington, N.Y.; Sue Ratts, Osgood, Ind.; Judy Varney, Kewanee, Ill.; Debby Welt, Iowa City, Iowa; Mary Higginbotham, Kenilworth, Ill.

## **Mu Province**

#### **BETA OMICRON—Tulane University**

Janet Boisfontaine, Patricia Dell, Helen Duvall, Elizabeth Feitel, Patricia Henican, Mary Lou Hevron, Margaret Leake, Marjory Manget, Elizabeth Penick, New Orleans, La.; Agnes Brown, Natchez, Miss.; Meta Caldwell, Oak Ridge, Tenn.; Nell Davidge, Ann Dubuisson, Martha Jane Johnston, Margaret Leary, Shreveport, La.; Paula Douglass, Atlanta, Ga.; Nancy Fant, Holly Spring, Miss.; Emily Friend, Spring Hill, Ala.; Dorothy Heaslip, Houston, Tex.; Eleanor Munger, Overland Park, Kan.; Anne Nicol, Frankfort, Ky.; Ann Turner, Spartanburg, S.C.; Lucile Walker, Sea Island, Ga.; Jane White, Jackson, Miss.; Judith Woodall, Paducah, Ky.

#### **BETA CHI—University of Kentucky**

Belle Andrews, Sarah Walton, Russellville, Ky.; Lucy Blanton, Paris, Ky.; Nancy Anne Boggs, Drusilla Cox, Mary Gess, Patricia Pinney, Sara Proctor, Anne Steele, Edith Wile, Lexington, Ky.; Patsy Carran, Covington, Ky.; Mary Crutcher, Elissa May, Frankfort, Ky.; Laura Sue Glenn, S. Charleston, W.Va.; Coral Evans, Logan, W.Va.; Margaret Hodgkin, Mary Ann Ogden, Betty Pursley, Betty Ann Royse, Winchester, Ky.; Mary Kauffman, Lancaster, Ky.; Jamie Rankin, Lancaster, Ky.; June Mefford, Charleston, W.Va.; Sally Montgomery, Plandome, L.I., N.Y.; Carlisle Sausley, Richmond, Ky.; Jo Anne Holt, Rose Hill, Versailles, Ky.

#### **GAMMA PI—University of Alabama**

Sally Barfield, Sylacauga, Ala.; Celia Cowan, Sarah Druhan, Marietta Hartman, Lilian Morck, Jane Vulevich, Mobile, Ala.; Ann Crume, Elise Faircloth, Tuscaloosa, Ala.; Georgia Cumming, Rome, Ga.; Nancy Davis, Talladega, Ala.; Emily Finlay, Martha Moorman, Brewton, Ala.; Annette Johnston, Brundidge, Ala.; Jeannette Johnston, Charlotte, N.C.; Nancy Koch, Houston, Tex.;



Jane Lane, Gadsden, Ala.; Nancy Oliver, Paula Porter, Mary Ann Schanacher, Birmingham, Ala.; Elizabeth Lane, Patsy Paterson, Montgomery, Ala.; Linda Perryman, Jackson, Miss.; Elaine Prestwood, Andalusia, Ala.; Ann Ross, Fort Smith, Ark.; Julia Rowan, Anniston, Ala.; Kate Rutherford, Newberry, S.C.; Lynne Schellberg, East Point, Ga.; Jean Shannon, Chevy Chase, Md.; Nancy Streit, Cincinnati, Ohio; Mary Williams, Oxford, Ala.

#### **DELTA EPSILON—Rollins College**

Martha Bowers, Mount Dora, Fla.; Margaret Ann Bristol, Foxboro, Mass.; Carol Ann Bubb, Miami, Fla.; Mildred Chapman, Brownsville, Tenn.; Deborah Delaney, Evanston, Ill.; Margaret Hobbins, Madison, Wis.; Cornelia Ladd, Garden City, L.I., N.Y.; Mary Louise Pahlmeyer, St. Louis, Mo.; Leslie Priester, Meridian, Miss.; Anne Richardson, Columbus, Ohio; Frances Rutherford, Carlisle, Pa.; Ann Smith, St. Petersburg, Fla.; Judith Strite, Encino, Calif.; Joanne Suozzo, Fort Lauderdale, Fla.; Patricia Thompson, Minneapolis, Minn.; Nancy West, Daytona Beach, Fla.

#### **DELTA IOTA—Louisiana State University**

Stephanie Ann Arculeer, Helen Freret, Elizabeth Hartwell, New Orleans, La.; Judianne Braswell, Sibley, La.; Sarah Ruth Campbell, Sally Ann Powell, Minden, La.; Nancy Jo Cruse, Stella Meeker, Marilyn O'Quinn, Nancy Parker, Janice Pourcy, Sammie Trammell, Alexandria, La.; Joyce Deville, Marksville, La.; Miriam Eakin, Frances Frederic, Susannah Frost, Penny Schober, Shreveport, La.; Pattie Gaiennie, Lecompte, La.; Audrey Hair, Kaplan, La.; Helen Grace Hargrove, Almena Meeks, Baton Rouge, La.; Sara Haynes, Natchitoches, La.; Priscilla Heard, Ruston, La.; Ketha Hough, Minden, La.; Kathryn Ann Kelly, Jackson, Miss.; Jacqueline Lapeyrouse, Jeanerette, La.; Karen Smith, Kennett, Mo.; Mollie Villeret, Houston, Tex.; Margaret Ware, Natchez, Miss.

#### **DELTA KAPPA—University of Miami**

Joan Cain, Hollywood, Fla.; Susan Chamberlain, Ft. Lauderdale, Fla.; Mary Jane Conway, Petoskey, Mich.; Lucia Dobler, Evanston, Ill.; Brenda LaMond, Newport, R.I.; Diane Lich, Shelbyville, Ill.; Margurita Madsen, Patricia Ulrich, Miami, Fla.; Janet Pell, Louisville, Ky.; Rita Rasche, Westchester, Ill.; Mary Lou Tompkins, Merion Station, Pa.

#### **DELTA RHO—University of Mississippi**

Josephine Blackmon, Greenville, Miss.; Janice Brolin, Jamestown, N.Y.; Ann Bussell, W. Helena, Ark.; Cartha Carpenter, Birmingham, Ala.; Elizabeth Forrester, Bonnie McLemore, Meridian, Miss.; Helen Godat, Crossett, Ark.; Ann Gordon, Alexandria, Va.; Missie Griffith, Patricia Griffith, Prentiss, Miss.; June Hoffman, Houston, Tex.; Jan Holmes, Newton, Miss.; Elizabeth Lacey, Drew, Miss.; Sandra Lominick, Vicksburg, Miss.; Bettye McKelvy, Helena, Ark.; Jean Nail, Horn Lake, Miss.; Nora Reagan, Carthage, Miss.; Diane Smith, New Orleans, La.; Lea Sunderland, Whitehaven, Tenn.; Ingrid Klockgeter, University, Miss.

#### **DELTA UPSILON—University of Georgia**

Anne Armistead, Jean Bowers, Barbara Brown, Boyce Dickson, Barbara Egy, Kay Holloway, Lettie Jensen, Barbara Ann Kane, Sandra Paul, Barbara Smith, Mary Lou Williams, Atlanta, Ga.; Lo Barnes, Walterboro, S.C.; Janice Burel, Buford, Ga.; Joan Daniel, Ann Marie Schwalb, Savannah, Ga.; Mary Drake, Jacksonville, Fla.; Diane Elliston, Waycross, Ga.; Marguerite Geer, Dallis Johnson, LaGrange, Ga.; Beverly Hammond, Athens, Ga.; Cynthann Hattaway, Columbus, Ga.; Sylvia Hiers, Waycross, Ga.; Mary London, Blacksburg, S.C.; Kate Maxwell, Crawford, Ga.; Billie Mayes, Birmingham, Ala.; Willa McCalla, Montezuma, Ga.; Noel Parker, Greenville, Ga.; Nan Rainey, Eatonton, Ga.; Jane Cameron Williams, Fitzgerald, Ga.; Jane Williams, Decatur, Ga.; Nell Louise Williams, Moultrie, Ga.

## **CONSULT YOUR DECEMBER KEY FOR THE DIRECTORY SECTION**

### **PLAN NOW TO JOIN THE KAPPA TOUR OF EUROPE IN 1956**

Fill in this blank and mail to: Mrs. Garnett McMillan, 530 East Town Street, Columbus 16, Ohio, for tentative itinerary and detailed information.

Married Name ..... Chapter .....

Maiden Name .....

Address .....  
(No.) (Street)

.....  
(City) (State)



## Down Theta province way

*(Continued from page 26)*

enlisted the aid of Nellie Harris Falconer,  $\Gamma \Phi$ -SMU and her cub scout group in collecting old sheets and pillow cases to be used for making the bandages. Theta province director of chapters, Mary Lou Myers Wiggins, B  $\Xi$ -Texas, and Lois Lake Shapard, B  $\Xi$ -Texas, member of the ritual committee, are loyal members of the Dallas group.

Fort Worth, the former "Cowtown" in eastern Texas, is now also famed for its "biggest bird," the B-36, whose nest is Convair and whose home roost is Carswell Air Force. This association was chartered in 1924 and has 150 active members, with 40 Kappa chapters represented in the membership. This fall and winter the Fort Worth group has been busy formulating plans for the colonization of a new Kappa chapter at Texas Christian University in Fort Worth. Josephine Hamphill Witherspoon,  $\Gamma \Phi$ -SMU, president, is leading the association in their plans. The group was organized June 11, 1924.

In the tall pine country of East Texas where oil, lumber and farming are the principal industries, is the Tyler club organized July 5, 1940. Cynthia Smith Simons,  $\Gamma \Phi$ -SMU, is president of this 25 member group. This club plans the East Texas rush party each summer and contributes playing cards, games and clothes to the East Texas Tuberculosis hospital.

Waco, in the rich oil land, has an association chartered September 26, 1935. Marjorie Carter Lacy, B  $\Xi$ -Texas, is president and leads the group in their rushing for all the Texas chapters.

The lower-lying region of the state, near the Gulf, has many leading deep water ports, including Beaumont, Port Arthur, Galveston, Corpus Christi and Houston.

Houston, a city of 600,000, has an association of 225 members representing 84 chapters of Kappa. Chartered April 13, 1928, the association is divided into Junior and Senior groups. The Junior group meeting at night has as its president Eleanor Allen Thompson,  $\Delta$  P-Mississippi. Marcia Holliday Key, B M-Colorado, is president of the Senior group which holds morning meetings. To initiate

newcomers a coffee is held early each season with the hospitality committee and executive board as hostesses. The association supports a scholarship at the University of Houston for the training of a teacher in the field of teaching handicapped children and have also supported the Texas Children's Hospital. Many of the members work in the hospital once a week serving in the wards as floor workers.

Since 1940 the group sponsors a biennial Christmas Pilgrimage. Five homes of association members are decorated. This year proceeds will go to the Houston Council for Retarded Children to help maintain their Opportunity Center, where retarded children are taught and helped to become useful members of their community. Gay More Maxwell, B  $\Xi$ -Texas, was the year's successful chairman. Myrtle Oliver Roeber,  $\Gamma$  I-Washington U., Theta province director of alumnae, is a member of the Houston group.

The club of Beaumont-Port Arthur has an active membership of 17. Both of the cities are principal ports and are also active in the oil, farming and ship building industries. The club, organized October 22, 1946, as Sabine-Naches changed to its present name May 5, 1951. It also includes in its membership Kappas living in the towns of Orange and Silsbee. The club, composed chiefly of young mothers, has a fluctuating membership and does rushing for the Texas chapters.

Corpus Christi, on the Gulf of Mexico, is an oil and cotton center. The 30 member club was chartered February 23, 1945. Jeanette Heminway Grant, B Z-Iowa, is president. The meetings are predominantly social with emphasis upon hospitality. The club is active in magazine subscription work under the direction of Virginia Rainey Conolly, B  $\Xi$ -Texas, and during the summer gives rush parties for the Texas chapters.

Another seaport town, Galveston, has a club of 20 members, chartered January 21, 1943. Situated on an island, Galveston is called the playground of the South. Jane Sawyer Bickel,  $\Sigma$ -Nebraska, is president of the club. Big project this year is the publication of a Kappa directory containing all the names of alumnae who live in the port city on the Gulf of Mexico.



## Housemother to housemothers

*(Continued from page 13)*

dean of women's staff and dealing with understanding the group life of college students and fostering the best educational interests affecting the individual within the group. Afternoons, under the direction of the Purdue School of Home Economics, deal with the management responsibilities of safety, menu planning, training of employees, budgeting, etc. There are no examinations given over the course but the women take careful notes (in big notebooks Mrs. McDougale has thoughtfully brought over from one of the bookstores) and also receive quantities of mimeographed reference materials. One concept carefully stressed relates to the title "housemother" itself. Many schools have changed the title to house director, adult counselor, etc. The women learn that the title is not as important as the understanding that their position in the student group is an educational one, not a policeman, not a spoon-feeder.

About half the women in each session of the school are already employed and these

housemothers add much additional information informally to fellow students. Each national fraternity and sorority is invited to send a "scholarship" woman, one of the experienced and successful housemothers of one of their chapters. This group of scholarship women serve as "big sisters" to small groups of the women unfamiliar with the work.

Many campus administrators write to Purdue for names of possible housemother candidates, or come to the campus to interview women while the school is in session. The office of the dean of women of course makes no guarantee that each woman interested will receive a job, but Dean Schleman and her staff are glad to give every possible assistance in this matter. Mrs. McDougale herself occasionally knows that a woman is interested in a special campus and possibly suggests that she write for an interview relating to a specific housemother vacancy there. Indeed housemothers on campuses in every state in the Union know Mrs. McDougale. Miss Schleman, the director of the school, expresses the high regard of many persons when she says, with a flourishing bow, "Mrs. McDougale is the dean of American housemothers."

## Their goals are high

*(Continued from page 9)*

fit of the national organization as a whole are two which should be of primary interest to all members of Kappa Kappa Gamma. In 1894, Carla Fern Sargent Fisk, Upsilon's delegate and chairman of the convention committee on ritual, submitted her design of "Sigma in Delta." Miss Sharp had the design made in gold and mounted on a stick-pin. This ultimately was accepted as the official pledge pin. And at that same convention Kate L. Sharp, one of Upsilon's charter members, became grand president. She held that much honored office until the convention of 1896, when she retired because of ill health. In 1885, Miss Sharp, who was the only one of the charter members to receive a degree, was given a diamond key on commencement day. After her death, this key, to which later

was added the diamond circle, the insignia of the office of grand president, was presented by Upsilon chapter to become the official badge of the grand president.

In 1894, the chapter continued to play an important roll. In that year Upsilon was appointed as a standing committee upon the revision of the ritual. The report was submitted and adopted by the 13th general convention and revised by the grand council of 1896-98. This ritual now stands as our present form, with certain additions and alterations.

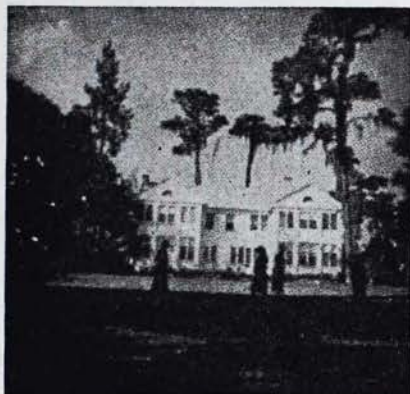
These are only a few highlights in the history of Upsilon chapter during its 72 years. It is the desire of the chapter, and each of its members individually, to continue to serve Kappa Kappa Gamma to the best of their abilities, not only by promoting a strong local group, but by ever-striving to keep the national standards as high as they have previously been.



*Make Reservations Early!*

## KAPPA'S HEARTHSTONE

Winter Park, Florida



Enjoy Your Alumnae Club

Sunshine

Relaxation

Mrs. George Losey, Iota, Mgr.

Special 6 months rate.



## ORDER KAPPA STATIONERY FROM

Miss Cleora Wheeler  
Designer, Illuminator  
1376 Summit Ave.  
St. Paul 5, Minn.  
Former National  
Registrar

A quire is 24 Sheets  
and Envelopes  
white, blue, gray  
stamped gold or silver

Note size \$1.50, Letter \$1.75; Correspondence  
Cards \$1.00; Informals (gold coat of arms at  
center) \$1.65; Mailing costs 35 cents a quire.  
Official paper, 250, 500 or 1,000 sheets and  
envelopes, stamped from your die. Dies made.  
Kappa place-cards, 50 and 75 cents a dozen.

100 "OUTLINE PRINTS," POSTPAID \$5.75;  
20 FOR \$1.35; ENVPS (4 x 5) INCLUDED  
ENCLOSE PAYMENT WITH ALL ORDERS

## *A Kappa Symphony*

*Ideal gift for new initiates*

Black and White 25¢—tinted 75¢

Proceeds aid Scholarship Fund

Order from

FRATERNITY HEADQUARTERS  
530 E. Town St., Columbus 16, Ohio

# Have You Moved or Married?

Make change on this form, paste on government postal card and mail to:

KAPPA KAPPA GAMMA FRATERNITY HEADQUARTERS  
530 East Town Street, Columbus 16, Ohio

Please change my name on the files as follows:

FROM: Name .....

Maiden Name .....

Chapter .....

Address .....

(No.)

(Street)

(City)

(Zone)

(State)

TO: Name .....

Address .....

(No.)

(Street)

(City)

(Zone)

(State)

If this is only a temporary change please list your permanent forwarding address below

If temporary change please give approximate duration period .....

If this is a change of name give husband's full name .....

Changes must be at the Fraternity Headquarters six weeks prior to the month of publication to insure prompt delivery of THE KEY.



# KAPPA ALUMNAE AND ACTIVE MEMBERS

You can order your official jewelry  
direct from this page—TODAY!

## KAPPA KAPPA GAMMA

### Badge Price List

1. Plain .....\$ 5.00
2. Pearl ..... 15.00
3. All Sapphire ..... 20.50
4. Sapphire and Pearl alternating,  
8 Sapphires, 7 Pearls ..... 18.25
5. Diamond and Pearl alternating,  
8 Diamonds, 7 Pearls ..... 80.00
6. Diamond and Sapphire alternating,  
8 Diamonds, 7 Sapphires ..... 85.00
7. Diamond ..... 125.00

8. Special Award Keys
  - Plain ..... 6.00
  - Crown Set Pearl ..... 17.50
  - Crown Set Synthetic Emeralds ..... 20.00
  - Crown Set Synthetic Sapphires ..... 22.50
  - Diamonds—Crown Set ..... 150.00
  - Crown Set Genuine Garnets ..... 20.00
  - Crown Set Synthetic Rubies ..... 20.00
  - Crown Set Ball Opals ..... 22.50
  - Crown Set Turquoise ..... 20.00

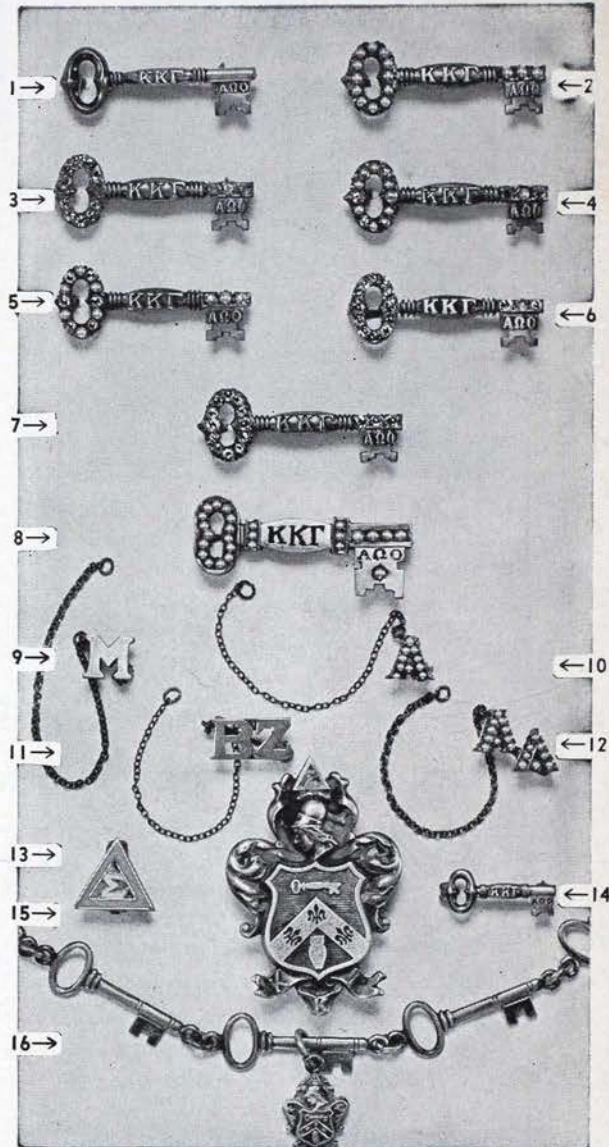
When placing your order, please be sure to state whether you wish polished or dull finished keys. If black letters desired add \$1.00 extra to above prices.

Orders must be made out and signed by the Chapter Secretary on special official order blanks which must also be approved by the Executive Secretary before deliveries can be made.

13. Pledge Pin .....\$ 1.00
14. Recognition Key Pin
  - Gold Filled ..... 1.50
  - 10 Karat ..... 2.50
15. Large Coat of Arms Dress Clip or Pin. May  
also be made as pendant at \$1.00 additional.
  - Bronze .....\$ 1.75
  - Sterling Silver ..... 2.75
  - Gold Filled ..... 5.00
  - 10 Karat ..... 23.25
16. Key Bracelet with Coat of Arms Pendant, Silver 2.25

### GUARD PIN PRICES

	Single Letter	Double Letter
Plain ..... 9.	\$2.25	11. \$ 3.50
Crown Set Pearl ..... 10.	6.50	12. 11.50
Miniature Coat of Arms Guard, yellow gold .....	2.75	
Gavel Guard .....	2.75	



10% Federal Excise Tax must be added to all prices  
quoted above—plus sales or use taxes wherever they are  
in effect.

Send today for your free personal copy of

## "THE GIFT PARADE"

Published by

YOUR SOLE OFFICIAL JEWELERS

# BURR, PATTERSON & AULD CO.

2301 Sixteenth Street, Detroit 16, Michigan

AMERICA'S OLDEST—AND MOST PROGRESSIVE—FRATERNITY JEWELERS



# What to do when

## CALENDAR FOR CHAPTERS, ADVISERS, HOUSE BOARDS AND PROVINCE DIRECTORS OF CHAPTERS

### OCTOBER

- 1—(Or two weeks after opening) PRESIDENT sends program for chapter council to national chairman of chapter councils and province director of chapters.
- 1—(Or two weeks after opening) VICE-PRESIDENT sends informal report of personnel program to the national chairman of personnel and province director of chapters.
- 1—(Or two weeks after opening) PLEDGE CHAIRMAN sends informal report of pledge training program to the national chairman of pledge training and province director of chapters.
- 1—(Or two weeks after opening) SCHOLARSHIP CHAIRMAN sends informal report of scholarship program to the national chairman of scholarship and province director of chapters.
- 1—(Or ten days after opening) MEMBERSHIP CHAIRMAN sends two copies of report on rushing to director of membership, province director of chapters, and files a copy in notebook. Also, sends director of membership recommendation blanks for each member pledged.
- 1—(Or two weeks after opening) TREASURER sends copy of the budget for school year to the Fraternity chairman of chapter finance. Upon receipt of her suggestions, mail three copies of corrected budget to her.
- 10—TREASURER places monthly finance report in mail to Fraternity chairman of chapter finance and chapter's subscription for *Banta's Greek Exchange* and *Fraternity Month* to the Fraternity Headquarters. Make all checks payable to the Fraternity.
- 10—TREASURER mails subscriptions for chapter library and check to director of the Kappa Magazine Agency.
- 10—(Or before) TREASURER OF HOUSE BOARD sends annual report and names and addresses of house board members to Fraternity Headquarters and chairman of housing. Also send to Fraternity Headquarters, if books are audited locally, a copy of June 30 audit.
- 13—FOUNDERS' DAY. Observe in appropriate manner.
- 15—CORRESPONDING SECRETARY sends list of chapter officers to Fraternity Headquarters and province director of chapters. Send copy of current rushing rules, campus Panhellenic Constitution to director of membership, province director of chapters and Kappa's Panhellenic officer with name and address of Panhellenic delegate.
- 30—(Or immediately after pledging) REGISTRAR prepares pledge membership report in duplicate. Mail one to province director of chapters and second copy with corresponding pledge signature cards give to chapter treasurer to mail with fees. MAIL SUPPLY ORDER TO FRATERNITY HEADQUARTERS.
- 30—(Or immediately after pledging) TREASURER mails check for pledge fees to Fraternity Headquarters together with registrar's membership report, pledge signature cards, cards with date upon which letters to parents of pledges were mailed for fall term.

### NOVEMBER

- 10—TREASURER places monthly finance report in mail to Fraternity chairman of chapter finance.
- 30—REGISTRAR gives names and addresses of active members to treasurer to send with per capita fees.
- 30—TREASURER sends to Fraternity Headquarters check for bonds and the per capita fee report and annual fee for each member active on or before November 30, and annual per capita fee for associate members.
- 30—TREASURER check to be sure initiation fees have been mailed to the Fraternity Headquarters with the registrar's report of active members and associates.

### DECEMBER

- 1—SCHOLARSHIP CHAIRMAN sends to Fraternity Headquarters, national scholarship chairman and province director of chapters a report of the scholastic ratings for the previous year and college grading system.
- 10—TREASURER places monthly finance report in mail to Fraternity chairman of chapter finance.

If it is impossible to make a report by the date listed in the following calendar, please notify the officer to whom the report should be sent. REPORT FORMS REQUESTED IN THE CALENDAR ARE SUPPLIED BY THE FRATERNITY HEADQUARTERS. If not received two weeks before the deadline request notify the Fraternity Headquarters to duplicate the mailing.

### JANUARY

- 5—(Or before 10th) FRATERNITY TESTS.
- 10—TREASURER places monthly finance report in mail to Fraternity chairman of chapter finance.
- 10—TREASURER places budget comparison report for all departments covering the first school term (if on quarter plan) in mail to Fraternity chairman of chapter finance. CHECK ALL BILLS AND FEES DUE FRATERNITY HEADQUARTERS.

### FEBRUARY

- 10—TREASURER places monthly finance report in mail to Fraternity chairman of chapter finance.
- 10—TREASURER places budget comparison report for all departments covering the first school term (if on the semester plan) in mail to Fraternity chairman of chapter finance.
- 10—MEMBERSHIP CHAIRMAN of chapters having deferred rushing sends two copies of report on rushing to director of membership and province director of chapters.
- 15—REGISTRAR sends annual catalog report to Fraternity Headquarters.
- 15—PRESIDENT mails report of active tests to director of chapters.
- 15—ANNUAL ELECTION AND INSTALLATION OF OFFICERS held between February 15 and April 15. SPECIAL ELECTION of membership chairman, adviser and province convention delegate and alternates must be held by February 15.
- 20—CORRESPONDING SECRETARY sends to Fraternity Headquarters name of membership chairman with college and summer address and name and address of adviser to be published in THE KEY. Send to province director of chapters name of province convention delegate and alternates. If annual election has been held send names and addresses of officers and advisers to Fraternity Headquarters and province director of chapters.
- 20—REGISTRAR gives names of initiates after November 30 and entering second quarter active and associate members to treasurer to send with per capita report.

## (Continued on Cover IV)

**Pledge fees due in Fraternity Headquarters within the month of pledging together with registrar's membership report and pledge signature cards.**

**Repledge fees must be sent as soon as chapter has decided to request permission. Fees must be accompanied by registrar's repledging membership report, secretary's application for initiation, badge orders, and president's repledging request.**

**Initiation applications due in Fraternity Headquarters two weeks before initiation date requested must be accompanied by badge orders.**

**Initiation fees due in Fraternity Headquarters one week after initiation together with catalog cards. For members initiated after Nov. 30 send per capita fee as directed.**

**Life Membership Fees due in Fraternity Headquarters May 1.**

**Make all checks payable to Kappa Kappa Gamma Fraternity.**



Mrs. William H. Sanders RA201  
1818 37th St. NW  
Washington, D. C. 7

Postmaster: Please send notice of Undeliverable copies on Form 3579 to Kappa Kappa Gamma Fraternity Headquarters, 530 East Town Street, Columbus 16, Ohio.

## What to do when

(Continued from Cover III)

### MARCH

- 1—TREASURER sends per capita fee for actives and associates entering second quarter with registrar's report of members active for this term and card reporting letters sent to parents of new initiates and pledges.
- 1—HOUSE BOARD PRESIDENT returns information regarding house director appointment to Fraternity Headquarters.
- 10—TREASURER places monthly finance report in mail for Fraternity chairman of chapter finance.
- 15—(Or immediately following elections) CORRESPONDING SECRETARY sends names and addresses of officers and alumnae advisers to Fraternity Headquarters and province director of chapters.

### APRIL

- 1—CHAIRMAN OF ADVISORY BOARD sends annual report to director of chapters and province director of chapters.
- 10—TREASURER places monthly finance report in mail to Fraternity chairman of chapter finance.
- 15—(Or before) CORRESPONDING SECRETARY mails annual chapter report to the Fraternity Headquarters. Also send school date report for next year.
- 30—TREASURER sends Fraternity Headquarters check for annual audit. CHECK AND PAY ANY OUTSTANDING BILLS.

### MAY

- 1—MEMBERSHIP CHAIRMAN sends order for supplies to Fraternity Headquarters.
- 1—REGISTRAR gives names of initiates after November 30 and entering second semester or third quarter active members and associates to treasurer to send with per capita report.
- 1—TREASURER sends check for per capita fee and report for active members and associates entering second semester or third quarter together with registrar's report of active members and card reporting letters sent to parents of new initiates and pledges.
- 1—TREASURER sends check and report for Life Membership Fees to Fraternity Headquarters.
- 10—TREASURER places monthly finance report in mail to Fraternity chairman of chapter finance. CHECK TO BE SURE ALL FEES AND BILLS HAVE BEEN PAID TO FRATERNITY HEADQUARTERS.
- 15—PROVINCE DIRECTOR OF CHAPTERS sends an annual report to director of chapters.

### JUNE

- 10—TREASURER places monthly finance report in mail to Fraternity chairman of chapter finance and prepares book for audit.

### JULY

- 10—(On or before) TREASURER expresses ALL material for annual audit to Fraternity Headquarters. Check inside back cover of finance instruction book for list of material needed to make the audit. Enclose list of supplies needed for following school year.

OR ALUMNAE ASSOCIATIONS,  
PROVINCE DIRECTORS OF  
ALUMNAE.

(Club officers responsible only for reports which are starred)

### SEPTEMBER

- \*15—TREASURER sends a copy of current annual budget and audit report of past year to the director of alumnae and province director of alumnae.
- \*25—SECRETARY sends to Fraternity Headquarters, director of alumnae and province director of alumnae names and addresses of any changes in officers since April elections.

### OCTOBER

- \*1—PRESIDENT—Final date to return corrections of addresses from galley list to Fraternity Headquarters.
- \*13—FOUNDERS' DAY—Observe in appropriate manner.

### NOVEMBER

- \*15—SECRETARY sends list of alumnae who have moved to other cities to nearest alumnae organization. Also, sends to director of alumnae, Fraternity Headquarters and province director of alumnae the organization's program for the current year with a directory of all local alumnae with current addresses. ORDER CHANGE OF ADDRESS POSTALS FROM FRATERNITY HEADQUARTERS ON WHICH TO REPORT NEW ADDRESSES OF THOSE WHO HAVE MOVED.

### JANUARY

- \*10—SECRETARY sends informal report to province director of alumnae.
- 20—PROVINCE DIRECTOR OF ALUMNAE sends informal report to director of alumnae.

### APRIL

- \*10—SECRETARY sends names and addresses of new officers to Fraternity Headquarters, director of alumnae and province director of alumnae.
- \*30—SECRETARY sends annual report to director of alumnae and province director of alumnae.
- \*30—TREASURER sends to Fraternity Headquarters annual per capita fee report and per capita fee for each member of the current year. (June 1, 1954 to April 30, 1955), and annual operating fee.
- 30—TREASURER sends to Fraternity Headquarters annual convention fee.
- \*30—TREASURER sends estimated budget to director of alumnae and province director of alumnae.

### MAY

- \*10—MEMBERSHIP CHAIRMAN orders recommendation blanks from Fraternity Headquarters.
- 20—PROVINCE DIRECTOR OF ALUMNAE sends report of her province to director of alumnae.