

THE KEY



DECEMBER, 1919

VOL. XXXVI

NO. 3

The Key

Official Organ of Kappa Kappa Gamma

Volume XXXVI

DECEMBER, 1919

Number 3

Board of Editors

Editor-in-chief—Mrs. Howard B. Mullin . . 111 West 11 Street, New York City

Editor's Deputy—Della Lawrence Bryan, Texas.

Alumnae Editor—Sarah B. Harris . School of Oratory, Northwestern University
Evanston, Ill.

Department Editor—Mrs. Everett Warner . . 508 E. Adams St., Muncie, Ind.

Exchange Editor—Eleanor Aldridge St. James Pl., Brooklyn, N. Y.

Business Manager—Elisabeth Bartlett . 1922 Mount Royal Terrace, Baltimore, Md.

FRATERNITY DIRECTORY

GRAND COUNCIL

Grand President—MRS. PARKE R. KOLBE, 250 E. Buchtel Ave., Akron, Ohio.
Grand Vice-president—SARAH B. HARRIS, Northwestern University School of Oratory, Evanston, Ill.
Grand Secretary—MRS. FRANK A. KEMP, JR., 1344 Grandview Ave., Boulder, Colo.
Grand Treasurer—GERTRUDE KING WOOD, 814 Second Pl., Plainfield, N. J.
Grand Registrar—MRS. CHARLES WILLIAM LEAPHART, Missoula, Mont.
Editor of THE KEY—MRS. HOWARD B. MULLIN, 111 W. 11th St., New York, N. Y.

CHAIRMEN

Historian—MRS. A. H. ROTH, 629 Myrtle St., Erie, Pa.
Director of Catalogue—MRS. LUCY H. GRAHAM, 808 Indiana Ave., Urbana, Ill.
Chairman Student Aid Fund—MRS. RICHARD H. GODDARD, 401 E. 11th Ave., Denver, Colo.
Custodian of the Badge—MRS. THEODORE WESTERMANN, 31 Kraft Ave., Bronxville, N. Y.
Chairman Scholarship Committee—MRS. JAMES L. ROBINSON, 1736 Ocean Ave., Brooklyn, N. Y.
Custodian of Songbook—(pro tem) MRS. NEVA HAIGHT SCHULZE, 1050 E. 19th St., Brooklyn, N. Y.

DEPUTIES

Grand President's Deputy—MARION VORIS, 103 S. Union St., Akron, Ohio.
Grand Vice-president's Deputy—MRS. MAURICE JAMES, 2521 Hartzell St., Evanston, Ill.
Grand Secretary's Deputy—KATHERINE MORLEY, 1335 Josephine St., Denver, Colo.
Grand Treasurer's Deputy—MRS. HORACE E. THORN, 29 Laclede Ave., Trenton, N. J.
Grand Registrar's Deputy—DOROTHY STERLING, Gerald Ave., Missoula, Mont.
Editor's Deputy—DELLA LAWRENCE, Bryan, Tex.

CORRESPONDING SECRETARIES

ALPHA PROVINCE

President—MRS. RAYMOND STORE (Beta Iota), Pottstown, Pa.
Vice-president—EVELYN WHY, 242 E. Highland Ave., Chestnut Hill, Philadelphia, Pa.
BOSTON (Phi), Dorothea Fall, 688 Boylston St., Boston, Mass.
ADELPHI COLLEGE (Beta Sigma), Louise Jackens, 247 71st St., Brooklyn, N. Y.
PENNSYLVANIA (Beta Alpha), Helen Evans, 3433 Walnut St., Philadelphia, Pa.
SWARTHMORE (Beta Iota), Eleanor Weber, Box 99, Swarthmore, Pa.

BETA PROVINCE

President—MRS. HELEN PROBST ABBOT (Beta Beta), 54 Harper St., Rochester, N. Y.
Vice-president—MRS. GLADYS ELURETT BUSH (Beta Tau), 224 Gordon Ave., Syracuse, N. Y.
CORNELL (Psi), Louise Tarbell, Overlook Rd., Cayuga Heights, Ithaca, N. Y.
SYRACUSE (Beta Tau), A. Louise Morris, 907 Walnut Ave., Syracuse, N. Y.
ST. LAWRENCE (Beta Beta), Mary E. Ellsworth, Canton, N. Y.
TORONTO (Beta Psi), Miriam Marshall, Annesley Hall, Queen's Park, Toronto, Canada.

GAMMA PROVINCE

President—MISS HELEN MCCLINTOCK (Gamma Rho), 313 N. Mills St., Madison, Wis.
Vice-president—CAROLYN MCGOWAN, 2857 Observatory Ave., Cincinnati, Ohio.
ALLEGHENY (Gamma Rho), Marguerite Diefenderfer, Hulings Hall, Meadville, Pa.
PITTSBURGH (Gamma Epsilon), Katherine Johnson, 844 N. Lincoln Ave. N. S., Pittsburgh, Pa.
WEST VIRGINIA (Beta Upsilon), Corra Harris, 279 Wiles St., Morgantown, W. Va.
MUNICIPAL UNIVERSITY OF AKRON (Lambda), Nora E. Wilson, 101 W. Center St., Akron, Ohio.
OHIO STATE (Beta Nu), Margaret L. Wood, 1458 Highland St., Columbus, Ohio.
CINCINNATI (Beta Rho), Helen Guhman, 240 Hosea Ave., Cincinnati, Ohio.

DELTA PROVINCE

President—MRS. FRANK DONNER (Iota), Greencastle, Ind.
Vice-president—MRS. WILL LOUDEN, 519 N. Walnut St., Bloomington, Ind.
DE PAUW (Iota), Mary Frances Grose, Seminary St., Greencastle, Ind.
BUTLER COLLEGE (Mu), Margaret Bruner, 324 S. Ritter Ave., Indianapolis, Ind.
INDIANA STATE (Delta), Frances Chapman, Kappa House, Bloomington, Ind.
KENTUCKY (Beta Chi), Mary Turner, Patterson Hall, Lexington, Ky.
PURDUE (Gamma Delta), Margaret E. Murphey, 124 Marsteller St., West Lafayette, Ind.

EPSILON PROVINCE

President—MISS AMIE BENJAMIN, 2624 Second Ave., Detroit, Mich.

Vice-president—MILDRED ARMSTRONG (Xi), 335 Merrick St., Adrian, Mich.
MICHIGAN (Beta Delta), Margaret Christie, 1204 Hill St., Ann Arbor, Mich.
ADRIAN COLLEGE (Xi), Marvel Marie Garnsey, Adrian College, Adrian, Mich.
HILLSDALE (Kappa), Helen Elizabeth Stoll, Railroad and Spring Sts., Hillsdale, Mich.

ZETA PROVINCE

President—MRS. HELEN W. DU BARRE (Eta), 3103 Wells St., Milwaukee, Wis.

Vice-president—CORA WALLACE, 507 W. University Ave., Champaign, Ill.
MINNESOTA (Chi), Edith Murray, 329 10th Ave. S. E., Minneapolis, Minn.
WISCONSIN (Eta), Louise Allyn, 425 N. Park St., Madison, Wis.
NORTHWESTERN (Upsilon), Helen Fonts, 530 Greenleaf Ave., Wilmette, Ill.
ILLINOIS WESLEYAN (Epsilon), Irene Quinn, 410 W. Mulberry St., Normal, Ill.
ILLINOIS (Beta Lambda), Anna Coalley, 212 Chalmers St., Champaign, Ill.

ETA PROVINCE

President—DOROTHY MUSSER, 715 College St., Iowa City, Iowa.

Vice-president—VIRGINIA LUCAS (Omega), 3837 Harrison Boulevard, Kansas City, Mo.

IOWA (Beta Zeta), C. Jean Birdsall, Kappa House, Iowa City, Iowa.
KANSAS STATE AGRICULTURAL COLLEGE (Gamma Alpha), Norine Weddle, 311 N. 14th St., Manhattan, Kan.
NEBRASKA (Sigma), Marjorie Temple, 312 N. 14th St., Lincoln, Neb.
KANSAS STATE UNIVERSITY (Omega), Virginia Melvin, 930 Kentucky St., Lawrence, Kan.
COLORADO (Beta Mu), Alice Burrows, 1221 University St., Boulder, Colo.
NEW MEXICO (Gamma Beta), Margaret Lee, University, Albuquerque, N. M.

THETA PROVINCE

President—KATHERINE SEARCY (Beta Xi), Public Library, Gary, Ind.

Vice-president—RUTH FITZGERALD (Theta), 105 S. Miller St., Warrensburg, Mo.
MISSOURI (Theta), Emily Fitch, 600 Rollins St., Columbia, Mo.
OKLAHOMA STATE (Beta Theta), Caroline Copeland, Kappa House, Norman, Okla.
TEXAS STATE (Beta Xi), Belle Trimble, 707 W. 24th St., Austin, Tex.
TULANE (Beta Omicron), Ione Brady, Octavia Apts., New Orleans, La.

IOTA PROVINCE

President—MRS. LUCILLE T. HORSLEY, 936 36th Ave., Seattle, Wash.

Vice-president—EVA COFFEE, 101 S. 5th St., West Missoula, Mont.
MONTANA (Beta Phi), Irene Gay Begley, 233 S. 6th E., Missoula, Mont.
WASHINGTON (Beta Pi), Elizabeth Baird, 5026 16th Ave. N. E., Seattle, Wash.
OREGON (Beta Omega), Georgine Mary Geisler, 754 13th Ave., Eugene, Ore.
IDAHO (Beta Kappa), Virginia McRae, Kappa Kappa Gamma House, Moscow, Idaho.
WHITMAN (Gamma Gamma), Katherine Seckels, Reynolds Hall, Walla Walla, Wash.

KAPPA PROVINCE

President—GEORGIA WISEMAN (Pi), San Mateo, Cal.

Vice-president—MRS. DOROTHY DAVY GROSE, San José, Cal.
CALIFORNIA (Pi), Ruth Gompertz, 2725 Channing Way, Berkeley, Cal.
LELAND STANFORD, JR. (Beta Eta), Elisabeth McArthur, Stanford University, Cal.

Chairman of the National Panhellenic Congress—MRS. ETHEL HAYWARD WESTON (Sigma Kappa), 20 Prospect Ave., Rumford, Maine.

ALUMNAE ASSOCIATIONS

ALPHA PROVINCE

Boston Association—Virginia T. Taylor, 1 Oakdale Ave., Dedham, Mass.
New York Association—Cora P. Emery, 5 Nassau St., New York, N. Y.
Philadelphia Association—President, Alice M. Rodman, 1011 S. 48th St., Philadelphia, Pa.; Secretary, Mildred Goshow, 428 Conarroe St., Roxborough, Pa.
Beta Iota Association—Mrs. Watson Magill, Oak Lane, Philadelphia, Pa.
Beta Sigma Association—Mrs. Ella D. Romig, 145 West 12th St., New York, N. Y.

BETA PROVINCE

Syracuse Association—Florence R. Knapp, 410 Westcott St., Syracuse, N. Y.
Western New York Association—Mrs. Byron A. Johnson, 511 Woodbine Ave., Rochester, N. Y.

GAMMA PROVINCE

Columbus Association—President, Catharine Metzler, 49 Linwood Ave., Columbus, Ohio; Secretary, Ona Menafée Wells, 278 S. Ohio Ave., Columbus, Ohio.
Cincinnati Association—Ruth B. Guhman, 240 Hosea Ave., Cincinnati, Ohio.
Cleveland Association—Mrs. E. V. Ward, 2026 Cornell Rd., Cleveland, Ohio.
Pittsburgh Association—Mrs. A. G. Crawshaw, 201 East End Ave., Pittsburgh, Pa. (President).
Morgantown, W. Va., Association—Mrs. C. Edmund Neil, 239 Spruce St., Morgantown, W. Va.
Lambda Club (Akron)—Ruth Harter, 544 Market St., Akron, Ohio.
Beta Gamma Club—Florence McClure, Larwell St., Wooster, Ohio.

DELTA PROVINCE

Franklin Nu Association—Mrs. F. W. Erther, 846 W. 30th St., Indianapolis, Ind.
Indianapolis Association—Mrs. Theodore Vonnegut, 1221 Park Ave., Indianapolis, Ind.
Bloomington, Indiana, Association—Mrs. Ethel Smith Hobbs, Bloomington, Ind.
South Bend Association—Mrs. Elizabeth G. Seebirt, 634 N. Lafayette Blvd., South Bend, Ind.
Iota Club—Mrs. Helen O. Sigmund, Crawfordsville, Ind.
Falls City Association—Miss Clara I. Eaken, 229 E. Maple St., Jeffersonville, Ind.
Mu Club—Elsie R. Felt, 64 N. Irvington Ave., Indianapolis, Ind.
Lafayette Association—Mrs. Fern Hunter, 719 S. 11th St., Lafayette, Ind.
Muncie Association—Mrs. Frank Cuddy, 1 1-2 Orchard Pl., Muncie, Ind.

EPSILON PROVINCE

Adrian Club—Mrs. Florence Worden, 141½ W. Maumee St., Adrian, Mich.
Detroit Association—Maude Munro, Cass Technical High School, Detroit, Mich.

ZETA PROVINCE

Chicago Association—Mrs. Dwight P. Green, 914 E. 53rd St., Chicago, Ill.
North Shore Association—Miss Kathryn Goss, 905 Forest Ave., Evanston Ill. KEY Correspondent, Mrs. C. L. Ward, 1203 Michigan Ave., Evanston, Ill.
Champaign-Urbana Association—Mrs. L. R. Hubbard, 1506 W. Park Ave., Champaign, Ill.
Madison Club—Mrs. Trumbower, 1111 W. Johnson St., Madison, Wis.
Milwaukee Association—Miss Amy Allen, 126 19th St., Milwaukee, Wis.
Bloomington, Illinois, Association—Miss Constance W. Ferguson, Bloomington, Ill.
Topeka Club—Mrs. Frank D. Nuss, 1621 Clay St., Topeka, Kan.

ETA PROVINCE

St. Louis Association—Adelaide Simonds, 6254 Arundel Pl., St. Louis, Mo.
Kansas City Association—Mrs. A. J. Thompson, 3832 Warwick Blvd., Kansas City, Mo.
Denver Association—Elfrida V. VanMeter, 1326 Columbine St., Denver, Colo.
Cedar Rapids Association—Mrs. Clyde Stephens, 1751 A Ave., Cedar Rapids, Iowa.
Iowa City Club—Mrs. Annette Cannon, Iowa City, Iowa.
Tri City Club—Ethel McKown, 2424 Brady St., Davenport, Iowa.
Lincoln Association—Mrs. Samuel C. Waugh, 2501 Bradfield Drive, Lincoln, Neb.
Lawrence Association—Alice M. Guenther, 641 Ohio St., Lawrence, Kan.
Omaha Club—Mary Alice Duval, 4903 Underwood Ave., Omaha, Neb.
Gamma Alpha Club—Hazel Groff, Nortonville, Kan.
St. Joseph Club—Dorothy Vaut, 602 N. 25th St., St. Joseph, Mo.

THETA PROVINCE

Dallas Association—Mrs. Sawnee R. Aldridge, 3526 Cedar Springs Rd., Dallas, Tex.
Newcomb Club—Mrs. John Pratt, 1230 State St., New Orleans, La.
Austin Alumnae Association—Miss Sue K. Campbell, 2208 San Antonio St., Austin, Tex.
Houston Club—Mrs. Fred Parker, St. James Apts., Houston, Tex.
Palestine Association—Mrs. Webb Wright, 310 E. Kolstad St., Palestine, Tex.
Oklahoma Association—Iris Baughman, 730 E. 9th St., Oklahoma City, Okla.

IOTA PROVINCE

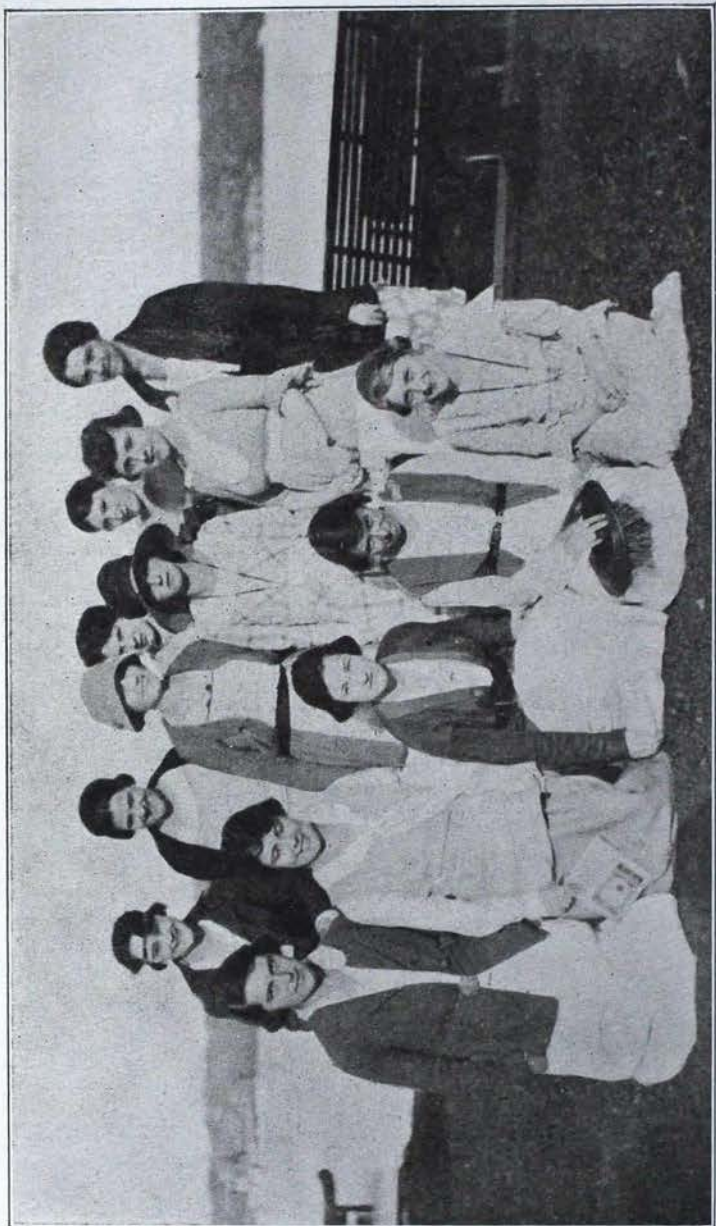
Montana Association—Mary Elrod, 205 S. 5th St. E., Missoula, Mont.
Washington Association—Miss Celia D. Shelton, 2904 Franklin Ave., Seattle, Wash.
Portland Association—Mrs. T. G. Williams, 962 E. Ninth St., Portland, Ore.
Walla Walla Association—Henrietta Baker, 2nd and Alder Sts., Walla Walla, Wash.
Beta Eta Association—Mrs. Gloucester Willis, 2550 Gough St., San Francisco, Cal.

KAPPA PROVINCE

Los Angeles Association—President, Mrs. Louise Avery Crosse, Rampart Apts., Corner 6th and Rampart, Los Angeles, Cal.; Secretary, Miss Lois Collins, 1401 Manhattan Pl., Los Angeles, Cal.
Pi Association—Mrs. H. W. Tomlinson, 588 Jean St., Oakland, Cal.
Walla Walla Association—Phoebe T. Kimball, Dayton, Wash.

CONTENTS

FRONTISPIECE—SOME MID-WESTERN KAPPAS WHOM YOU WILL MEET AT CONVENTION:.....	260
MINUTES OF COUNCIL SESSION.....	261
GRAND COUNCIL REPORTS AND OFFICERS' REPORTS.....	280
EDITORIAL COMMENT	311
CHAPTER LETTERS	314
DIRECTORY OF MEETINGS.....	328



SOME MID-WESTERN KAPPAS WHOM YOU WILL MEET AT CONVENTION

THE KEY

VOLUME XXXVI

DECEMBER, 1919

NUMBER 3

MINUTES OF COUNCIL SESSION

EDGEWATER BEACH HOTEL, CHICAGO, ILL.

September, 1919

The session of the Grand Council of Kappa Kappa Gamma was called to order by the Grand President at 2 p. m., Saturday, September 28, 1919.

The Grand Treasurer, Gertrude King Wood, Beta Iota, was formally installed by the Grand President.

The following members of the Grand Council responded to roll call: Grand President, Grand Treasurer, Grand Registrar, Editor, and Grand Secretary. The Grand Vice-president was absent from the first session because her duties as Registrar and Dean of Women of the College of Oratory at Northwestern University necessitated that she be there.

The Council session was called over a Sunday for the convenience of the Grand Vice-president.

The Grand Treasurer was appointed assistant secretary.

The Editor was appointed Sergeant-at-arms.

It was moved and seconded to dispense with the reading of the minutes of last Council session because they had been printed and read. Motion carried.

The following program for Council Session was submitted by the Grand President; and upon motion, duly seconded, it was accepted.

SATURDAY, SEPTEMBER 27

2 P. M. Installation of Grand Treasurer.

Adoption of program.

Appointments.

Instructions to committees.

Preparatory business.

8 P. M. Committee meetings.

SUNDAY

- 9 A. M. Committee meetings.
10 A. M. Roll call.
Reading of minutes.
Council officers' reports.
Report of Standing Committees.
Report of Province Presidents.
Report of Chapters.
Report of Chapter visits.
Report of Province Vice-presidents.
8 P. M. Discussion of Alumnae Associations and Kappa Relief
Work at Bellevue-Meudon. Session conducted by
Grand Vice-president.

MONDAY

- 9 A. M. Call to order.
Reading of Minutes.
Discussion of Panhellenic, local and national. Session
conducted by Grand Secretary.
Report of Council Session committees.
Extension.
Finance.
Key Policy.
1920 Convention.
8 P. M. Continuation of Council Session Committee reports.
Recommendations to chapters.
Constitution and Standing Rules.
Policy.
Auditing.
Resolutions.

TUESDAY

- 9 A. M. Roll call.
Reading of minutes.
Report of Grand President.
Old business.
New business.
Reading of minutes of day.
Adjournment.

The following committees were appointed:

1. Extension—Grand Secretary and Grand President.
2. Finance—Grand Treasurer and Editor.
3. KEY Policy—Editor and Grand Vice-president.
4. 1920 Convention—Grand Treasurer, Grand Vice-president, Grand President.
5. Recommendations to Chapters—Grand Registrar and Grand Treasurer.
6. Constitution and Standing Rules—Grand Secretary and Grand Vice-president.
7. Auditing—Editor and Grand Registrar.
8. Alumnae—Grand Vice-president and Council.
9. Panhellenic—Grand Secretary and Council.
10. Policy—Grand Registrar and Grand President.
11. Resolutions—Grand Registrar and Grand President.

Instructions and suggestions were given to the committees.

It was moved, seconded, and carried to adjourn in order to hold committee meetings.

SEPTEMBER 28, 1919

Morning Session

The meeting was called to order by the Grand President.

Roll call showed all members of the Council present.

Minutes of previous day read and approved.

The Grand Registrar read her report. Moved, seconded, and carried to accept the report.

The Editor gave her report and upon motion, duly seconded, the report was accepted.

The Grand Treasurer read her report, that of the KEY Publication Fund, the Sinking Fund, and the Business Manager of THE KEY. It was moved, seconded, and carried to accept the reports as read.

The Grand Vice-president's report was given and upon motion was accepted.

The Grand Secretary read the reports of the Standing Committees.

1. Report of the Historian. Upon motion the report was accepted with this addition: That if the Historian approves, blanks for the history report be printed on paper that can be filed in loose-leaf notebooks, and that two blanks be sent to chapters, one to be

sent to the Historian, the other to be kept in the chapter archives; and that blanks on war activities be sent to alumnae associations and clubs as well as to chapters.

2. Report of Director of Catalogue. Moved, seconded, and carried to accept the report.

3. Report of the Students' Aid Fund. Report accepted with a vote of thanks to the chairman for her efficient work, to chapter, alumnae associations, and individual members for generous contributions.

4. Report of the Custodian of the Badge. Upon motion the report was accepted.

5. Report of Scholarship Committee. Report was accepted upon motion.

6. Report of Song Book Committee accepted as read.

The reports of the Province Presidents were read and thoroughly discussed.

Meeting adjourned.

Afternoon Session

Meeting called to order by the Grand President.

Continuation of Province Presidents' reports.

Report of Iota Province Conference read and discussed. It was decided that this is an excellent way to foster friendly spirit between chapters and colleges, and is very helpful to the chapters. Mrs. Horsley was highly commended for her efficient work in making this conference a success.

Discussion of chapter visits.

It was moved, seconded, and carried to dispense with reading the annual chapter reports because they are to be printed. A résumé was given by the Grand Secretary.

Meeting adjourned.

Evening Session

Meeting called to order by the Grand President.

Discussion of general fraternity problems.

Adjournment.

SEPTEMBER 29, 1919

Morning Session

Meeting called to order by the Grand President.

Roll call. Grand Vice-president absent but responded later.

Reading of minutes of previous day; minutes accepted as read.
The reports of Council Session Committees were read.

The report of the Extension Committee was read by the Grand Secretary and upon motion the report was accepted.

REPORT OF THE EXTENSION COMMITTEE

The Extension Committee recommends:

1. That the fraternity continue its present judicious policy of extension, studying carefully the educational advantages of the state, the standing of the college, the personnel of the student body and the worth of the petitioning local.

2. That the Grand Secretary make a statistical study of the extension of the other N. P. C. fraternities in order to compare the growth of Kappa Kappa Gamma with the growth of the other women's fraternities.

3. That the fraternity look to the southern colleges for suitable places for extension. The coeducational colleges of the South have been growing rapidly the last few years and we feel that Kappa Kappa Gamma should extend its influence into this field.

4. That the Extension Committees in question look further into the informal petitions of Gamma Iota, Oregon State College, Corvallis, Oregon, and Gamma Chi, Oklahoma A. and M.

The report of the Finance Committee was read by the Grand Treasurer and was accepted as amended.

REPORT OF THE FINANCE COMMITTEE

The Finance Committee recommends:

That the Grand President's Report for 1918-1920 be printed as soon after the 1920 Convention as possible.

That the Chairman of the House Chaperon Committee place an advertisement for chapter-house chaperons in the Association of Collegiate Alumnae magazine, in the Southern Association of Colleges *Bulletin*, and in THE KEY.

That inasmuch as the Books of Ritual showed improvement after being exhibited at Convention, the chapter treasurers' books be on exhibition at the 1920 Convention.

That the Grand Treasurer's books be open to everyone at the 1920 convention.

That, at the request of the Historian, blanks be printed for her use.

That as little chapter visiting as possible be done by the Grand Council and the Province Presidents between now and the 1920 Convention.

That the charter fee of this fraternity be raised from \$15 to \$25 per capita, with a minimum fee of \$250. Out of this \$25 shall be paid \$1 for the Student's Aid Fund, \$5 for a five-year subscription to THE KEY, the April per capita tax to the national treasurer, and the archives for the chapter.

That inasmuch as the running expenses of the fraternity have doubled within the last three years, and as the \$5 per capita tax has heretofore scarcely been adequate to meet expenses, the April per capita tax for the year 1919-1920 be raised to \$10, \$5 to be paid January 1 and \$5 April 1. This increase is necessary because of the raise in the price of printing and paper, the increased cost of visits from Province Presidents and members of the Grand Council, and the enormous increase in railroad rates for delegates to Convention. The delegates' expenses to a Convention in the Middle West amount this year to about \$6,000, just twice as much as those to the Convention at Estes Park, our most expensive Convention up to this time. The members of the Grand Council also feel that the hostess chapter at Convention should be allowed more than \$200 for the expenses of entertaining. The committee recommends that this raise in the per capita tax be in effect for the year 1919-1920, and that it be voted on at Convention as to its permanency.

That when two sisters are members of a chapter at the same time, their subscriptions to THE KEY include one number of the magazine for ten years instead of two copies for five years.

The report of THE KEY Policy Committee was given by the Editor. It was moved, seconded, and carried to accept the report.

REPORT OF THE KEY POLICY COMMITTEE

THE KEY Policy Committee recommends:

That the minutes of this Council session be printed in the December KEY, nothing but the minutes and chapter letters to be used in that number, thereby making it a less expensive number.

That Convention be well advertised in the next three numbers.

That the February number be an alumnae number. This was done in 1917 and was a successful innovation.

That the fines for not sending chapter letters and Parthenons be imposed more carefully this year. Since last Council Session this has not been done because many of the omissions were caused by unavoidable reasons—the flu epidemic, quarantine, closed colleges, etc.

That the Bellevue-Meudon war records be published and the chapters which have done good work in this be mentioned.

Upon motion the meeting was adjourned.

Afternoon Session

Reading of reports of Council Session committees continued.

The report of 1920 Convention Committee was read by the Grand Treasurer. It was moved, seconded, and carried to accept the report as amended.

REPORT OF CONVENTION COMMITTEE

The Convention Committee reports as follows:

Invitations to entertain Convention for 1920 have been received from the following chapters: Eta, Beta Xi, Iota, and the other Indiana chapters, Beta Delta, Pi, and Omega and Theta.

The Grand Council voted last year to hold the 1920 Convention in the Middle West. The committee therefore recommends—

That we accept the invitation of Beta Delta as entertaining chapter, Convention to be held at Charlevoix or some one of the attractive resorts near Chicago or Detroit, as Beta Delta and this committee shall decide, and we recommend that the other two Michigan chapters, Xi and Kappa, coöperate with Beta Delta in the entertainment of Convention.

That the entertaining chapter ascertain as soon as possible where and when Convention will be held so that the chapters may vote on any necessary change of date. Convention to be held at the time that the best hotel rates can be secured.

That because of the fact that this is our fiftieth anniversary, special invitations be sent to the founders of the fraternity and to all ex-officers urging them to attend, and that if possible, their traveling expenses be paid from the general treasury.

That in case the Students' Aid Fund has not reached the goal set, pledges and donations be received at Convention.

That loose-leaf notebook paper, 10½ by 8, be used for all printed matter for Convention for the convenience of the delegates.

That a second edition of the Convention paper, *The Hoot*, be published.

That the Grand President appoint a censor committee which shall choose the best chapter stunts for presentation on Stunt Night at Convention.

The Grand Registrar read the report of the Recommendations to Chapters Committee. Upon motion duly seconded, the report was accepted as amended.

REPORT OF THE COMMITTEE ON RECOMMENDATIONS TO CHAPTERS

The Committee on Recommendations to Chapters recommends:

1. That Founders' Day, October 13, be celebrated in an appropriate manner by each chapter.
2. That every member of each chapter read and become familiar with the initiation ritual.
3. That there be a regular program adopted by the chapters for meetings besides the regular business, such as:

First week in the month—Current Events.

Second week—Alumnae Night.

Third week—Personal Conduct.

Fourth week—Fraternity History, *Banta's Greek Exchange*, Constitution and Standing Rules of the fraternity.

Fifth week—Studying of the Constitution of the United States.

4. That each chapter adopt a point system for college activities and require that each member shall make a certain number of points each semester.

5. That every active chapter encourage the alumnae in the town in which the chapter is situated to form an alumnae association.

6. That each active chapter get out a news letter to each of her alumnae, telling of the 1920 Convention and encouraging all to attend.

7. That the house chaperon be a woman of good breeding, refinement, and education.

8. That the local Panhellenic rulings in regard to alumnae be made definite and that a rushing party be defined in clear terms. (Some of our chapters have had difficulties about this.)

9. That chapters be prompt in answering all letters, sending out reports and blanks on time.

10. That each chapter this year, except those chapters that have already contributed \$35 or more, contribute \$35 or a Liberty Bond to the Students' Aid Fund, thereby completing our goal of \$10,000 by 1920.

11. That chapters continue in their War Relief work. Do not forget our Bellevue-Meudon Reconstruction Work. Write to the Grand Vice-president, Sarah B. Harris, School of Oratory, Northwestern University, Evanston, Illinois, when you want suggestions about war work.

12. That pledges be required to hold regular meetings under the supervision of the chapter president.

13. That each chapter study the Constitution of the United States and see that every member is a true American.

14. That each chapter cultivate refinement in reading and amusements.

15. That chapters should not tolerate anything but decent dancing.

16. That simplicity in dress and naturalness of appearance be encouraged.

17. That our chapters encourage sane and economical rules in Panhellenic.

18. That our chapters urge the local Panhellenics to take a stand against the new, extreme dances.

19. That chapters without chapter-houses have a central meeting place as near college as possible.

20. That a senior committee in each chapter be appointed to enforce student government in the chapter-house.

21. That high scholarship be insisted upon in every class in the chapter.

Evening Session

Meeting called to order by the Grand President.

Meeting conducted by the Grand Vice-president.

Discussion of alumnae and alumnae problems.

Report of Kappa Relief Work at Bellevue-Meudon given by Grand Vice-president. The report was most gratifying.

Meeting adjourned.

SEPTEMBER 30, 1919

Morning Session

Session called to order by the Grand President.

Roll call.

The report of the Standing Rules Committee was read by the Grand Secretary and upon motion, duly seconded, the report was accepted as amended.

REPORT OF COMMITTEE ON CONSTITUTION AND
STANDING RULES

The committee recommends:

That the following changes be made in the Constitution at next Convention:

Con. Art. II, Sec. 7—add “and so on through the alphabet.”

Con. Art. II, Sec. 16—add “and Business Manager of THE KEY.”

Con. Art. II, Sec. 17—add “and Business Manager of THE KEY.”

Con. Art. VI, Sec. 1—add “or by a unanimous vote of the Grand Council and Chairmen of Committees and a three-fourths vote of the chapters and alumnae associations during the interim between Conventions.”

That the following changes be made in the Standing Rules:

I.

St. Rl. 1—change to “One or more Chapters or Alumnae Associations may unite in entertaining Convention.”

2.

St. Rl. 8—add—after “in the hands of the Grand Treasurer,” the Business Manager of THE KEY and the Chairman of the Students' Aid Fund.

3.

St. Rl. 9—add—"and on THE KEY moneys paid out by Business Manager."

4.

St. Rl. 11—add—"To supply 'authorized petition blanks,'" between "to instruct petitioners" and "To send charters." Also, add—"To act as Chairman of Extension Committee," preceding "to instruct petitioners."

5.

St. Rl. 12—omit—"Supervise Business Management of THE KEY."

6.

St. Rl. 13—add—"examination to chapters elect before their installation."

7.

St. Rl. 14—omit—"audit the accounts of the Grand Treasurer."

8.

St. Rl. 21—omit—3. Mounted file of Private Annual Reports. Change 1. Journal to Ledger, under Archives of Grand Treasurer.

9.

St. Rl. 22—add—"A Chairman of the Students' Aid Fund maintained by Kappa Kappa Gamma Fraternity and a Chairman of the National Scholarship Committee." Also, "a Business Manager of THE KEY to serve for a period of four years." Add after "Custodian of the Badge," "Chairman of Student Aid Fund, Chairman of Scholarship Committee, Chairman of Song Book Committee, Business Manager of THE KEY."

10.

St. Rl. 22-(c)—add—a new duty numbered 1. as follows—"To supply badge blank orders to those desiring badges," and renumber the other duties.

11.

St. Rl. 23—rewrite—"It shall be the duty of the Chairman of the National Scholarship Committee to procure, etc."

12.

St. Rl. 24—Rewrite as follows: "It shall be the duty of the Chairman of the Students' Aid Fund Maintained by Kappa Kappa

Gamma Fraternity, together with the Grand President as Committee, to have in charge the money and loaning of the fund.—The recommendations, etc.”

Omit (b) (c) (d) and (e) and insert under 2. of the new division “Funds.”

13.

Under “Charters and New Chapters” insert the following rules before St. Rl. 26:

1. Any group wishing information regarding Kappa Kappa Gamma shall write to the Grand Secretary.

2. Informal and formal petitions for a charter of Kappa Kappa Gamma shall be placed with the Grand Secretary.

3. Authorized petition blanks can be obtained from the Grand Secretary.

4. All those signing the authorized petition blank must be regularly matriculated students, doing two-thirds ($\frac{2}{3}$) the required work leading to an academic or advanced degree at the time of the petitioning.

Renumber St. Rl. 26 and change last sentence to read as follows: If the Extension Committee is in favor of permitting the local to petition, a formal blank shall be sent by the Grand Secretary.

14.

St. Rl. 27—change to read—Application for a charter must be made upon an authorized blank.

15.

St. Rl. 28—change to read—

(a) A member of the Grand Council must inspect the petitioning group and personally interview all of the petitioners before a charter can be granted.

(b) In addition to inspection by the Grand Council the local shall be visited by at least one active member elected from the nearest chapter.

(c) and (d) to remain unchanged.

16.

St. Rl. 30. Change (b) to read—If an application for a charter receives an affirmative Grand Council vote, uniform petition booklets shall be sent by the petitioning local to all chapters and

alumnae associations. The Grand Secretary shall send the voting blanks with the recommendation of the inspecting Grand Council officer and the report of the representative of the nearest chapter.

17.

St. Rl. 32. Change to read—"The installation fee shall be \$25 per capita with \$250 as a minimum . . ." This fee shall cover the following:

1. \$1 initiate's fee to Students' Aid Fund.
2. Five years' subscription to THE KEY.
3. April per capita tax to National Treasury.
4. Archives for chapter.

18.

St. Rl. 42—add—"It shall be the duty of the treasurer to keep the accounts of the chapter and pay bills incurred by the chapter."

19.

Add a new St. Rl. after 54—"Every initiate shall be given a certificate of membership by the Director of Catalogue, such certificate to be signed by the Grand President and Grand Secretary."

20.

St. Rl. 56—change to read—Candidates for initiation and installation shall, before being admitted to membership in Kappa Kappa Gamma, pass an examination in the following:

St. Rl. 56, III, be renumbered as follows:

III. THE KEY

(a) History.

(b) Support.

1. Financial.

2. Literary.

IV. Names and addresses of Grand Council.

V. Names of Chairmen of Committees.

VI. Directory of Chapters (Names and location).

21.

St. Rl. 57-(a)—add—"The date of initiation and 'Charter Member' if owner is a charter member."

22.

Under the heading THE KEY add the following:

I. Every active member must be a subscriber to THE KEY for five years. At time of initiation, each member shall pay \$5 to the

Business Manager of THE KEY which entitles her to THE KEY for five years.

2. Each alumnae association shall subscribe for THE KEY.

3. Subscription to THE KEY for one year is one dollar payable to the Business Manager.

4. A life subscription to THE KEY is \$15, payable to the Business Manager. This amount may be paid in full or in three consecutive yearly payments of \$5.

5. There shall be a "Key Publication Fund," the interest only to be used to help finance the fraternity magazine.

Renumber St. Rl. 61 and add after the word "also" in the last clause—"Kappa Kappa Gamma delegate to N. P. C. and."

Omit St. Rl. 63 (1) (2).

23.

Add a new St. Rl. under Fines—as follows: "Fines are payable to the Grand Treasurer within two weeks after their imposition."

24.

St. Rl. 72—insert—"At time of convention."

25.

St. Rl. 74—add—"Province Presidents, Province Vice-presidents, or Alumnae Associations" and insert "or for all official fraternity communication."

26.

St. Rl. 77 (1) (e) be changed as follows: "Each alumnae association shall subscribe for THE KEY.

St. Rl. 77 (1) (g) be renumbered 78 and be changed to read as follows: "Each alumnae association shall have three officers, president, secretary, and treasurer to be elected at the last meeting," etc.

St. Rl. 77 (1) (g) (1) be renumbered 79 and be changed to read: "The duties of the president are those," etc. (g) (2) be numbered 80 and read "The secretary shall make the following reports," etc. (g) (3) be numbered 81 and read "The treasurer shall send," etc.

St. Rl. 77 (2) to be renumbered 82, 3 to be renumbered 83, and so on through the rules under the heading "Alumnae Associations."

27.

Take 8 and 9 out of the appendix and put in the Standing Rules, 8 at the end of the rules under Convention and 9 at the end of the rules under Chapters.

28.

That a new heading called "Funds" be inserted after "Dues" which shall include the following:

1. Sinking Fund. This is a sum of money left in a Savings Bank to grow by its own interest. This fund is to be used only in case of litigation or dire necessity by the fraternity. One thousand six hundred and fifty dollars of this fund is in Liberty Bonds of the third issue. The rest, in money, is in the Citizens' Saving and Trust Company, Cleveland, Ohio, to which must be added the interest from the Liberty Bonds until time of their maturity, when the money from their sale must be returned to the Citizens' Saving and Trust Company.

2. Students' Aid Fund Maintained by Kappa Kappa Gamma Fraternity—add St. Rl. 24 (a, b, c, d, e) and omit these rules under Standing Committees.

3. KEY Publication Fund, the interest of which is to be used to help finance the fraternity magazine. This fund was established by withdrawing all moneys from the Sinking Fund except \$1,500, and to this amount is added each year:

a. \$5 from each initiate.

b. All life subscriptions.

c. One half the money remaining in the Grand Treasury at the end of each administration.

4. The books of the Grand Treasurer, the Business Manager of THE KEY and the Chairman of the Students' Aid Fund shall be audited by an expert accountant during the summer preceding convention.

29.

Change the heading "The Badge," a division of the Standing Rules, to "Fraternity Jewelry."

30.

Under the heading "Chapter" St. Rl. 40 (6) omit g, l, and n.

The report of the Policy Committee was read by the Grand Registrar and upon motion, duly seconded, the report was accepted.

REPORT OF THE POLICY COMMITTEE

The Policy Committee recommends:

1. That a national officer make a visit to a chapter the year following its installation.
2. That each month of the academic year a letter be sent each chapter by some member of the Grand Council or Chairman of a Standing Committee.
3. That the interfraternity relationship be on a frank and fair basis.
4. That friendly relations be established between all Kappa chapters, thereby being of mutual help to each other. Province conferences are suggested as a means to foster friendly spirit and coöperation in neighboring chapters.
5. That Kappa Kappa Gamma stand for simplicity in dress, entertainment, and in living.

Report of the Committee on Panhellenic: Grand Secretary in the chair.

Résumé of a questionnaire sent to chapters in the spring on local Panhellenic was given. Discussion of National Panhellenic.

REPORT OF THE PANHELLENIC COMMITTEE

The Committee on Panhellenic recommends:

1. That Kappa Kappa Gamma suggest to N. P. C. that a national bureau for chaperons for fraternity houses be established and that this bureau be advertised in A. C. A. magazines, all women's fraternity magazines, and in *Banta's Greek Exchange*.
 2. That Elisabeth Bartlett, Business Manager of THE KEY, be asked to act as Kappa's delegate to N. P. C. to take the place of the Grand President.
 3. That chapters use their best efforts to make sane, economical rules governing entertaining prior to pledging.
 4. That chapters urge independent girls to organize new locals. The freshman classes in all colleges are so large this year that many girls are not pledged who would be in other years. It is better to have as many students in organized groups as possible.
- Meeting adjourned.

Afternoon Session

Meeting called to order by the Grand President.

Report of the Auditing Committee was read by the Editor:

REPORT OF THE AUDITING COMMITTEE

The auditing committee reports that the treasurer's books were audited by an expert accountant and found accurate.

The committee audited the business manager's books and found them correct.

Upon motion the report was accepted.

The report of the Committee on Resolutions was read by the Grand Registrar. It was moved, seconded, and carried to accept the report.

REPORT OF THE COMMITTEE ON RESOLUTIONS

The Committee on Resolutions submitted the following:

RESOLVED: 1. To thank Upsilon Chapter for its invitation to tea and to express our regrets that we could not accept.

2. That Grand Council of Kappa Kappa Gamma in session send greetings to Miss Boyd of Alpha Chapter, 1870.

3. That a note be sent to the Chairman of the Students' Aid Fund congratulating her for her splendid work.

4. That a note of appreciation be sent to Dorothy Canfield Fisher for her splendid spirit in establishing the Kappa relief work in Bellevue-Meudon.

OLD BUSINESS:

Report of Committee to revise the Pledging Service, and compose a Memorial Service. Editor reports that work is progressing.

Report of the Committee on Sole-Jewelership was given by the Grand Treasurer.

REPORT OF THE COMMITTEE ON SOLE-JEWELERSHIP

Letters have been written to all of the official jewelers of our fraternity stating that we were considering the adoption of a plan for sole-jewelership and asking if they would care to undertake that work for us and if so, what proposition they were willing to make.

Have received replies from all except Weld and Sons, Minneapolis.

The Toronto Trophy-Craft Company is of course not to be considered as a sole-jeweler because of the duty on articles sent from Canada to the United States.

Without exception, they do not encourage sole-jewelership, the main reasons being:

1. Lack of competition, which fact tends to deteriorate the quality of the articles procured.

2. Dissatisfaction of active members of fraternity because those at a distance

- (a) Must wait so long for the delivery of jewelry.

- (b) Must generally order by catalogue since salesmen seldom can cover the entire area more than once a year.

Moved, seconded, and carried to accept report. Recommended that study of this problem be continued and reported at next session.

NEW BUSINESS:

It was moved, seconded, and carried that Kappa Kappa Gamma do not establish chapters in purely pedagogical colleges.

Election of Province Presidents and Vice-presidents:

Alpha Province

Mrs. Raymond Storb, Province President, Beta Iota.

Evelyn Why, Province Vice-president, Beta Alpha.

Beta Province

Mrs. Helen Probst Abbott, Beta Beta.

Mrs. Gladys Eldrett Bush, Beta Tau.

Gamma Province

Helen McClintock, Gamma Rho.

Carolyn McGowan, Beta Rho.

Delta Province

Mrs. Frank Donner, Iota.

Mrs. Will Loudon, Delta.

Epsilon Province

Anne Benjamin, Beta Delta.

Mildred Armstrong, Xi.

Zeta Province

Mrs. Helen Du Barre, Eta.

Cora Wallace, Beta Lambda.

Eta Province

Dorothy Musser, Beta Zeta.
Virginia Lucas, Omega.

Theta Province

Katherine Searcy, Beta Xi.
Ruth Fitzgerald, Theta.

Iota Province

Mrs. Lucile Horsley, Beta Pi.
Eva Coffee, Beta Phi.

Kappa Province

Georgia Wiseman, Pi.
Mrs. Dorothy Davy Grose, Beta Eta.

Upon motion the session was adjourned.

GRAND COUNCIL REPORTS AND OFFICERS' REPORTS

GRAND PRESIDENT'S REPORT

During 1918-1919 five hundred and forty-six girls were initiated into Kappa Kappa Gamma. Among this number were several of the French women who attended our universities under the arrangements made by the Association of American Colleges. Eight hundred badges were sold. Two chapters were installed—Gamma Delta Chapter at Purdue University in January and Gamma Epsilon in February at the University of Pittsburgh; they have equally high records and we are justly proud that they are chapters of Kappa Kappa Gamma. Two groups have petitioned formally for charters and nine have petitioned informally.

Our Grand Treasurer, Martha Willets, Beta Iota, died very suddenly in January of pneumonia. This is the first time in the history of the fraternity that a member of the Council has died while in office. We miss her calm, gentle personality and her helpful guidance. Through her death Kappa Kappa Gamma has lost a true, faithful, and ardent worker and sister. In July the Council appointed Gertrude K. Wood, Beta Iota, to serve as Grand Treasurer until the 1920 convention.

The Historian is at work on a complete and comprehensive history of Kappa Kappa Gamma which we hope will be ready for publication in 1920. The May, 1919, issue of *THE KEY* was a Directory published by the Director of the Catalogue. The Students' Aid Fund has grown by leaps and bounds so that we now have but \$1,500 more to raise before the coveted goal of \$10,000 is reached. If this amount has not been pledged by 1920, pledges can be given during convention.

In 1918-1919, forty-three chapters were visited either by some member of the Council or by a Province President. For the coming year there will be little or no visiting because of the expense connected with traveling, but the Council will send a letter each month to chapters. We hope through these letters to help and instruct chapter officers, forestall some of the problems, and in turn hear more often from the chapters themselves.

For the coming year per capita taxes will be doubled in order to meet the expenses of the administration and Convention. Dur-

ing the past five years expenses have increased 107% while per capita taxes have increased but 18%. The outlay for the 1920 Convention, in traveling expense alone, will represent an increase of 106% over the Convention of 1916.

Convention will be held some place in Michigan with Beta Delta as our hostess chapter. It is not too early for chapters to begin to think about the delegate whom they wish to represent them; for active girls to plan to attend and for alumnae to begin laying plans to be among those present.

I wish to recall to mind that in 1914 Kappa Kappa Gamma passed the following rule: "After the year 1915 no girl who becomes a member of a sorority of a high school or school of equal standing shall be eligible to membership in Kappa Kappa Gamma Fraternity." I do not doubt that in many cases to live up to this rule is a hardship but please remember that your chapter voted to have such a rule and since we have it, we must obey it.

I have thought much about the matter of our expansion. We must expand or we will stand still while other fraternities are forging ahead. I feel that we have grown wisely but we must not stop now. I believe in our conservative method which is to enter only those colleges and universities which rank with the best, but there are still states west of the Mississippi and in the northeastern part of the United States where we have no chapters, and the South, except for Beta Omicron and Beta Chi, is unchartered.

The Kappa Kappa Gamma Relief Work in Bellevue-Meudon is as flourishing now as during the war: chapters, alumnae associations, and individuals have continued to send money, clothing, and drugs; and Dorothy Canfield Fisher is loud in her praise of what Kappa Kappa Gamma has done and is doing. She is again in the United States and we hope can attend the 1920 Convention where she will tell us verbally of the work in France, which is at present under the able direction of Madame Fischbacher and Adele Lathrop, Sigma.

The past year has been a period of unrest. Let us settle down to the year's work diligently and faithfully and may we prove through our conduct, our dress, our strict attention to the work at hand that we have come through the test, pure-minded, thoughtful, and ready to cope with the problems of the day.

Respectfully submitted,

LYDIA V. KOLBE, *Grand President.*

REPORT OF THE GRAND VICE-PRESIDENT, 1918-1919

	<i>November, 1918</i>	<i>November, 1919</i>
Number of Associations	38	43
Number of Clubs	13	13

The new associations organized since my last report are the following:

Montana Association	Missoula, Montana
Walla Walla Association	Walla Walla, Washington
Lawrence Association	Lawrence, Kansas
Lincoln Association	Lincoln, Nebraska
Lafayette Association	Lafayette, Indiana

Immediately after Council Session in November, 1918, a letter, embodying reports on Council Session and helpful suggestions for the year's work, was sent out to all alumnae associations and clubs.

At Council Session the Grand Vice-president was appointed National Chairman of War Work for Kappa Kappa Gamma. A report of what had been done to date and a statement of our aim as a fraternity for the year that was opening was sent out to chapters, alumnae associations, clubs, province officers, and national officers. In brief the report follows:

\$2,100.00 sent over by Grand Treasurer to Mme. Fischbacher from national treasury.

1,000.00 sent over by Grand Vice-president to Mme. Fischbacher, made up of contributions of alumnae associations, active chapters, and individuals.

900.00 received by Mme. Fischbacher from individuals and chapters direct.

Total \$4,000.00 Amount sent over prior to November 1, 1918.

An indefinite amount of clothing, toys, drugs, etc., all sent direct to Mme. Fischbacher and therefore no estimate possible.

Following is a detailed report of the gifts in money which have come to me since November 1, 1918, and which have been sent by me to Mme. Fischbacher.

Alumnae Associations

Beta Iota Alumnae Association	\$ 20.00	Kansas City Alumnae Association	\$150.00
Beta Theta Alumnae Association	19.00	Kappa House, Washington, D. C.	7.00
Detroit Alumnae Association	200.00	Los Angeles Alumnae Association	85.86

		<i>Active Chapters</i>	
Milwaukee Alumnae Association	\$5.00	Beta Sigma Chapter	\$ 55.00
Muncie Alumnae Association	5.00	Chi Chapter	100.00
North Shore Alumnae Association	90.00	Epsilon Chapter	12.50
Chicago Alumnae Association	5.00	Eta Chapter	501.45
South Bend Alumnae Association	20.50	Mu Chapter	63.00
			<hr/>
Total	\$607.36		\$731.95

Summary

Alumnae Associations	\$ 607.36
Active Chapters	731.95
	<hr/>
Grand Total	\$1,339.31

Here is a paragraph from a letter of Dorothy Canfield Fisher's which shows how she feels about the way in which the Kappas are keeping on with the work in Bellevue-Meudon. She has just received a "big check" from the Kappas, on the eve of her departure from France for America, after three years away from "her own folks."

"I am sitting down in the midst of forty thousand things to do to send you my thanks, not only for the check, so unexpectedly big, but also for your letter with its news that the Kappas really mean to keep on with this work! I can't tell you how happy that makes me. So many Americans are lying down on the job, so to speak, having started in with characteristic American enthusiasm and finding (this is also, I fear, one of our American traits) that it takes a lot of patience and endurance as well as enthusiasm to keep *at* anything. I am so proud of the Kappas because they don't show the least signs of that. I simply can't get over my delighted surprise at the constancy of the Kappas in this work."

And this from Mme. Fischbacher:

"I am deeply touched to find that after the end of the war, and when Americans are leaving France, the Kappas are still willing to *help France*, and give her the best, the most needed help, help to the children. It seems to me that every little baby born in France now is a precious little seed that must be tended with love and respect, if we don't want our country to disappear after the last dreadful crisis of the last year. And nothing can go more directly to our hearts than your help in this work."

After the departure of Dorothy Canfield Fisher from France, the task of carrying on our relief work in Bellevue-Meudon fell

entirely upon the shoulders of our good friend, Mme. Fischbacher. It would have been difficult for her to carry on the correspondence and card catalogue end of the work as it had been done, and therefore, we have been very fortunate in securing through Dorothy Canfield Fisher, the help of Miss Adele Lathrop, who has been for a number of years the head of Dana Hall at Wellesley. She has taken over that part of the work under Mme. Fischbacher's direction, and we are getting many splendid letters from her in regard to the development of the work, the use that is being made of our money and the clothing that is being constantly sent over, and valuable information as to what things are most needed by our "Kappa families" there in Bellevue-Meudon.

I am giving my report as Grand Vice-president and my report as National Chairman of War Work for Kappa Kappa Gamma, as one report, since during the war I have found myself giving my entire interest to that part of the work. However, nothing has ever done so much to stimulate the interest of the alumnae of Kappa Kappa Gamma in their fraternity as has this war work of ours which was made possible for us by Dorothy Canfield Fisher and Mme. Fischbacher. I am eternally grateful to them for putting some human interest into my "job." I believe the alumnae associations now existing are stronger than they could ever have been without this stimulus. May we never be without some such stimulus!

In the spring of 1919 I sent out to all Grand Council members, all Province Vice-presidents, and all alumnae associations a questionnaire. The interest of the alumnae in the matters brought up for discussion by this questionnaire was very gratifying. The questionnaire follows:

QUESTIONNAIRE

At Council Session this summer the Grand Council expects to give much time in discussion to alumnae organization and alumnae matters in general. Will you please give the following matters careful consideration either in your next meeting or in Executive Committee meeting and give me the benefit of your discussion in your answers to the following questions:

1. Do you think the voting power of alumnae delegates to Convention should be increased? What do you consider would be a fair voting power?
2. What increase in financial or other responsibility should go with the privilege of said voting power?

3. Do you consider that the privilege of more voting power would make for a more vital and coöperative body and an increase in interest in the fraternity? Or do you think of a better way to accomplish this end?
4. Do you think alumnae associations should not be fined for failure to comply with requirements? If requirements cannot be enforced, then should there be any requirements? If there be no requirements, what is to be the standard for an alumnae association in good standing, an association which may send to Convention a regularly accredited delegate?
5. Do you consider that it would be fair for active chapters to pay large taxes, pay fines, and comply with endless other requirements and regulations and then be governed by votes of alumnae who are held to no requirements whatever?
6. Do you think it would be advantageous to have alumnae associations arranged geographically, so that when a Kappa leaves college she becomes a Kappa at large, automatically becoming a member of the association nearest her residence, paying dues to that organization?
7. Or, would you think it better to recommend that the Convention rule that at initiation it be understood that Kappahood mean *Kappa Membership*, not only in college years, but as long as the Kappa key is worn? By this plan every alumna would belong to the association in her own town if be such, and if none, then by a small annual membership fee simply belong to the fraternity-at-large, for which fee certain returns should be made by the fraternity, as the sending of THE KEY, News Letters, etc.
8. Have you suggestions for keeping alumnae interested in the national fraternity? Do you think that our War Work under Dorothy Canfield Fisher has helped your association to keep its members interested?
9. How shall we keep our active and alumnae in closer unity?
10. What is your opinion relative to the benefit or otherwise of national and local Panhellenic?
11. What would you like to have us do at Convention that would be of interest to alumnae, either by way of the business or the pleasure of Convention?

SARAH B. HARRIS,

Grand Vice-president of Kappa Kappa Gamma.

The questions brought out by this questionnaire will be up for discussion and legislation at Convention, 1920.

REPORT OF THE GRAND SECRETARY 1918-1919

INFORMAL PETITIONS

Gamma Iota, Oregon Agricultural College, Corvallis, Oregon.
Gamma Delta Phi, Drake University, Des Moines, Iowa.

Local group at Ames, Ames, Iowa.
 Delta Chi, Des Moines College, Des Moines, Iowa.
 Delta Psi Delta, Beloit College, Beloit, Wisconsin.
 Kappa Gamma Chi, Emerson College, Boston, Mass.
 Local group at Fargo College, Fargo, North Dakota.
 Gamma Chi, Oklahoma A. & M., Stillwater, Oklahoma.

FORMAL PETITIONS

Alpha Sigma, University of Arizona, Tucson, Arizona, June, 1919.

Zeta Phi, Washington State College, Pullman, Washington, September, 1919.

CHAPTER AND ALUMNAE ASSOCIATION VOTES

November 30, 1918

"That a charter of Kappa Kappa Gamma be granted to Mu Sigma Alpha, Purdue University, West Lafayette, Indiana."

Chapters—39 affirmative; 3 negative.

Alumnae Associations—18 affirmative; 1 negative.

January 1, 1919

"That a charter of Kappa Kappa Gamma be granted to the petitioning local, Epsilon Rho Omicron, Pittsburgh University, Pittsburgh, Pennsylvania."

Chapters—41 affirmative; 1 negative.

Alumnae Associations—17 affirmative.

COUNCIL VOTES

February 13, 1919

That Iota Chapter be granted special dispensation in regard to Standing Rule 46 and be permitted to have 34 in the active chapter provided that only those girls are initiated who have passed successfully their first semester's work.

February 16, 1919

That Grand Council ratify the action of the Grand President in granting special dispensation in regard to Standing Rule 46 to Beta Omega Chapter.

February 16, 1919

That Grand Council ratify the action of the Grand President in appointing a committee consisting of Letta Brock, Chairman,

Della Lawrence, and one other to be appointed by Miss Brock, to investigate the 1919 Calendar.

March 10, 1919

That Grand Council ratify the action of the Grand Secretary in granting special dispensation to Psi Chapter in regard to standing rule 46 with the provision that only those girls should be initiated who had successfully passed their first semester's work.

March 10, 1919

That Grand Council ratify the action of the Grand President in appointing the Grand Secretary to draw up resolutions regarding the death of our beloved Grand Treasurer, to be sent to the Willets family, to Beta Iota Chapter, and to be published in THE KEY.

March 10, 1919

That Grand Council ratify the action of the Grand President in declaring February 1-15 a period of mourning for Martha Willets, Grand Treasurer, who died in office, January 20, 1919. During this period of mourning, no initiation shall be held and no formal functions shall be given by chapters or alumnae associations in the name of the fraternity.

March 10, 1919

That Grand Council ratify the action of the Grand President in appointing Gertrude King Wood, Beta Iota, Grand Treasurer *pro tem* until some definite action about appointing a new Grand Treasurer can be taken by the Grand Council.

March 14, 1919

That Grand Council ratify the action of the Grand President in granting permission to Beta Pi Chapter to initiate Miss Seldon.

March 28, 1919

That Grand Council ratify the action of the Grand President in recalling fifteen pages of the 1919 Calendar upon the recommendation of a specially appointed committee, which same pages will be replaced by others, the cost of printing and mailing the same to be borne by Margaret Herdman, publisher of the 1919 Calendar, at her request.

March 28, 1919

That Grand Council ratify the action of the Grand President in appointing Anne Benjamin, 2624 2nd Ave., Detroit, Michigan (Beta Delta), as Province President of Epsilon Province.

April 3, 1919

That the charter members of Gamma Delta and Gamma Epsilon Chapters be excused from the April taxes.

May 15, 1919

That Gertrude King Wood, Beta Iota, be appointed Grand Treasurer to fill out the unexpired term of Martha Willets, Beta Iota.

May 26, 1919

That Grand Council ratify the action of the Grand President in granting special dispensation in regard to Standing Rule 46 to Mu Chapter.

June 3, 1919

That permission be given to the Grand Treasurer to transfer the funds of the treasury now in the Trenton General Banking Company to the Plainfield Trust Company, since the Grand Treasurer is moving from Trenton to Plainfield.

June 3, 1919

That Grand Council ratify the action of the Grand President in appointing Mrs. Edith Satterthwaite Thorn, Beta Iota, as Grand Treasurer's deputy.

July 23, 1919

That Grand Council ratify the action of the Grand President in sanctioning the dismissal of a member of Pi Chapter.

July 23, 1919

That Grand Council ratify the action of the Grand President in declaring June 28, 1917, the official date of the surrender of Beta Epsilon Chapter, due to faculty and student legislation four years prior to this date.

July 23, 1919

That Grand Council ratify the action of the Grand President in giving Beta Iota Chapter permission to sanction junior pledging.

July 23, 1919

That Grand Council ratify the action of Eta Chapter in initiating twelve girls, which made a membership of over 30.

September 8, 1919

That Gamma Delta Chapter be excused from paying a fine for violation of Standing Rule 58.

September 29, 1919

That the following applications for loans from the Students' Aid Fund, which have been granted, be approved by the Grand Council:

Member of Psi	\$100.00
Member of Beta Tau	125.00
Member of Beta Nu	300.00
Member of Beta Pi	300.00
Member of Beta Iota	200.00
Member of Psi	100.00

September 29, 1919

That the notes of three borrowers from the fund be extended.

September 30

That Grand Council ratify the appointment of the following deputies: Grand President's deputy, Marion Voris; Grand Secretary, Katherine Morley; Editor, Della Lawrence; Grand Registrar, Dorothy Sterling.

CHAPTER VISITS

Sigma, Upsilon, Beta Iota, Beta Sigma, Beta Tau, Beta Xi, Beta Omicron, Beta Chi, Gamma Rho, Theta, Gamma Beta, Iota, Mu, Delta.

NEW CHAPTERS

January 24, 1919

Gamma Delta Chapter, Purdue University, West Lafayette, Indiana. Installing officer, Lydia Voris Kolbe, Grand President. D——s chapter, Mu.

February 21, 1919

Gamma Epsilon Chapter, Pittsburgh University, Pittsburgh, Pennsylvania. Installing officer, Lydia Voris Kolbe, Grand President. D——s chapter, Gamma Rho.

ESTELLE KYLE KEMP,
Grand Secretary.

GRAND TREASURER'S REPORT

STATEMENT JANUARY 25, 1919

	<i>Debit</i>	<i>Credit</i>
Postage, Stationery, Telegrams, Express, etc.....	\$ 143.93	
Council Visiting	34.38	
1918 Council Session	652.32	
Clerical Assistance	605.00	
Printing	44.25	
Miscellaneous	105.65	
Postage, Printing, etc., for Bus. Manager of KEY..	125.48	
Magazines	17.00	
KEY Publication Fund	4.50	
Cash on hand	2,708.58	
Fines		\$ 25.00
Alumnae Dues		6.00
Refund		37.21
Interest on Special Account.....		70.40
Interest KEY Publication Fund.....		87.20
Miscellaneous		130.00
Balance from Former Administration		4,085.28
	<hr/>	<hr/>
	\$4,441.09	\$4,441.09

Respectfully submitted,

GERTRUDE K. WOOD for

MARTHA WILLETS,

Grand Treasurer.

STATEMENT JUNE 5, 1919

	<i>Debit</i>	<i>Credit</i>
Students' Aid Fund	\$ 69.00	
Postage, Stationery, Telegrams, Express, etc.....	218.82	
KEY Publication Fund	175.00	
Publication of KEY	1,200.00	
Panhellenic	15.00	
Printing	485.05	
Province President Visiting	114.14	
Clerical Assistance	610.00	
Council Visiting	631.34	
Installations	257.90	
Inspection of Petitioning Chapters	61.03	
Miscellaneous	52.52	
Cash on hand	4,545.46	
Fines		\$ 5.00
Chapter Dues		5,057.00
Alumnae Dues		111.00

The Key

291

KEY Fines	\$	1.00
Refund		18.68
Catalogue		1.00
Charter Fees		525.00
Miscellaneous		7.00
Balance from Former Administration.....		2,708.58
		<hr/>
	\$8,434.26	\$8,434.26

Respectfully submitted,

GERTRUDE K. WOOD,
Grand Treasurer pro tem.

STATEMENT SEPTEMBER 1, 1919

	Debit	Credit
Students' Aid Fund	\$ 7.00	
Postage, Stationery, Telegrams, Express, etc.....	20.89	
Printing	40.92	
Province President Visiting	155.78	
KEY Publication Fund	2,042.64	
Clerical Assistance	240.00	
Inspection of Petitioning Chapters	25.00	
Catalogue	500.00	
Miscellaneous	6.00	
Publication of KEY	200.00	
Postage, Printing, etc., for Bus. Manager of KEY..	11.72	
Council Session 1919	80.00	
Fines		\$ 11.00
Chapter Dues		265.00
Alumnae Dues		79.00
Interest		45.71
Cash on hand	1,616.22	
Balance from Former Part of Administration....		4,545.46
	<hr/>	<hr/>
	\$4,946.17	\$4,946.17

Respectfully submitted,

GERTRUDE K. WOOD,
Grand Treasurer.

SUMMARY STATEMENT OF 1918-1920 ADMINISTRATION (1st year of Administration)

Disbursements

Students' Aid Fund	\$ 76.00
Postage, Stationery, Telegrams, Express, etc....	383.64
Council Visiting	665.72
1918 Council Session	652.32

The Key

1919 Council Session	\$ 680.00	
Clerical Assistance	1,455.00	
Printing	569.22	
Miscellaneous	164.17	
Postage, Printing, etc., for Bus. Manager of KEY.	137.20	
<i>Banta's Greek Exchange</i> for Council and KEY		
Staff	17.00	
One-half Balance Former Administration to KEY		
Publication Fund	2,042.64	
KEY Publication Fund	179.50	
Publication of KEY	1,400.00	
National Panhellenic Dues, 1918-1919.....	15.00	
Province President Visiting	269.92	
Installations	257.90	
Inspection of Petitioning Chapters	86.03	
Catalogue	500.00	
<hr/>		
Total Disbursements	\$8,951.26	
Cash on hand	1,616.22	\$10,567.48

Receipts

Balance from Former Administration	\$4,085.28	
Fines	41.00	
Chapter Dues	5,322.00	
Refund	55.89	
Alumnae Association Dues	196.00	
KEY Fines	1.00	
Kappa Kappa Gamma Catalogue	1.00	
Charter Fees	525.00	
Miscellaneous Receipts	137.00	
Total Interest	203.31	
<hr/>		
Total Receipts		\$10,567.48

BUDGET

1918-1920 ADMINISTRATION
(2nd year of Administration)

Receipts

Balance from First Half of Administration	\$ 348.22	
Brought Forward for 1920 Convention.....	1,268.00	
Chapter Taxes 1919-1920	11,000.00	
Chapter Taxes 1918-1919	200.00	
Alumnae Taxes 1919-1920	200.00	
Fines	40.00	
Interest	50.78	
<hr/>		
		\$13,107.00

Disbursements

Brought Forward for 1920 Convention	\$ 1,268.00
Delegates Expenses for 1920 Convention.....	5,412.00
Allowed Entertaining Chapter	300.00
1920 Council Session	650.00
1919 Council Session	600.00
Convention Expenses of Council, Deputies, Chairmen, and Officers	1,000.00
Turned Over to Publication of KEY.....	100.00
Printing	300.00
Clerical Assistance	1,350.00
Postage, Stationery, Telegrams, Express.....	400.00
Chapter Visiting	600.00
National Panhellenic—Yearly Dues and Dele- gate's Expenses	60.00
Banta's Greek Exchange for Council and KEY Staff	17.00
Reserved for Emergency	1,000.00
Miscellaneous	50.00
	<hr/>
	\$13,107.00

Sinking Fund

Brought Forward from Former Administration.....	\$65.66
January 1. Interest on General Account.....	.82
	<hr/>
January 25. Cash on Deposit	\$66.48
Citizens Savings and Trust Co., Cleveland, Ohio.	

Respectfully submitted,

GERTRUDE K. WOOD,
MARTHA WILLETS,
Grand Treasurer.

Sinking Fund

Brought Forward from Former Part of Adminis- tration	\$66.48
July 1. Interest on General Account.....	1.40
Interest on Liberty Bonds.....	34.98
	<hr/>
September 1. Cash on Deposit—Citizens Savings and Trust Co., Cleveland, Ohio.....	\$102.86

Respectfully submitted,

GERTRUDE K. WOOD,
Grand Treasurer.

CHAPTER SUBSCRIPTIONS FOR 1918-1919

<i>Chapter</i>	Subscriptions at \$1.00	Payments of \$5.00	Payments of \$10.00	Total No.
Phi	4	3	—	7
Beta Sigma	4	6	—	10
Beta Alpha	7	7	1	15
Beta Iota	1	15	—	16
Psi	—	10	—	10
Beta Beta	13	10	—	23
Beta Tau	—	5	—	5
Beta Upsilon	2	7	—	9
Lambda	2	8	—	10
Beta Nu	—	3	—	3
Beta Rho	3	7	—	10
Iota	6	20	—	26
Mu	4	29	—	33
Delta	11	12	—	23
Beta Chi	3	6	—	9
Gamma Delta	—	20	—	20
Beta Delta	2	7	—	9
Xi	2	5	—	7
Kappa	4	13	—	17
Chi	2	9	—	11
Eta	12	18	—	30
Upsilon	3	12	—	15
Epsilon	4	7	—	11
Beta Lambda	4	16	—	20
Beta Zeta	2	15	—	17
Gamma Alpha	—	11	—	11
Sigma	1	12	—	13
Omega	1	—	—	1
Beta Mu	—	15	—	15
Gamma Beta	—	4	—	4
Theta	12*	5	—	17
Beta Theta	4	19	—	23
Beta Xi	—	6	—	6
Beta Omicron	—	12	1	13
Beta Phi	1	10	—	11
Beta Pi	8	18	—	26
Beta Omega	9	22	—	31

*This amount deposited in KEY Publication Fund. Remainder to follow September, 1919.

Chapter	Subscriptions at \$1.00	Payments of \$5.00	Payments of \$10.00	Total No.
Beta Kappa	1	9	—	10
Gamma Gamma	—	39*	—	—
Pi	7	7	—	20
Beta Eta	1	1	—	12
	<hr/>	<hr/>	<hr/>	<hr/>
	143	511	2	656

Summary of Chapter Subscriptions:

One hundred and forty-three subscriptions at \$1.00.....	\$ 143.00
Twelve of these deposited in KEY Publication Fund.....	12.00
	<hr/>
Deposited in General Fund from Chapters.....	\$ 131.00
Five hundred and eleven subscriptions at \$5.00.....	\$2,555.00
Two payments of \$10.00.....	20.00
Twelve payments of \$1.00	12.00
	<hr/>
Deposited in KEY Publication Fund from Chapters.....	\$2,587.00

SUBSCRIPTIONS FROM ALUMNAE ASSOCIATIONS AND CLUBS
(1918-1919)

Association	Subscriptions at \$1.00	Payments of \$5.00	Payments of \$15.00	Total No.
Boston	4	—	—	4
New York	13	—	1	14
Philadelphia	4	3†	—	7
Beta Iota	15	1	—	16
Beta Sigma Club	5	—	—	5
Syracuse	7	—	—	7
Western New York	3	—	—	3
Columbus	13	—	—	13
Cincinnati	5	1	—	6
Cleveland	3	—	—	3
Pittsburgh	11	—	—	11
Morgantown	5	—	—	5
Lambda Club	—	—	—	—
Beta Gamma Club	—	—	—	—
Franklin Nu	1	—	—	1
Indianapolis	19	—	—	19

*Nine of these were second payments.

†Two of these were final payments of life subscriptions.

<i>Association</i>	<i>Subscriptions at \$1.00</i>	<i>Payments of \$5.00</i>	<i>Payments of \$15.00</i>	<i>Total No.</i>
Bloomington, Ind.	7	—	—	7
South Bend	4	—	—	4
Iota Club	—	—	—	—
Falls City	1	—	—	1
Mu Club	—	—	—	—
Muncie	5	—	—	5
Adrian Club	1	—	—	1
Detroit	11	—	—	11
Chicago	13	—	—	13
North Shore	13	—	—	13
Champaign-Urbana	5	—	—	5
Madison Club	—	—	—	—
Milwaukee	—	—	—	—
Bloomington, Ill.	14	—	—	14
Minnesota	8	—	—	8
Topeka Club	1	—	—	1
St. Louis	—	—	—	—
Kansas City	11*	—	—	11
Denver	11	—	—	11
Cedar Rapids	3	—	—	3
Iowa City Club	—	—	—	—
Tri City Club	—	—	—	—
Lincoln Club	—	—	—	—
Omaha Club	—	—	—	—
Gamma Alpha Club	—	—	—	—
Dallas	7	—	—	7
Newcomb Club	1	—	—	1
Austin	—	—	—	—
Houston	—	—	—	—
Palestine	1	—	—	1
Oklahoma	6	—	1	7
Washington	4	—	—	4
Portland	6	—	—	6
Walla Walla	—	—	—	—
Beta Eta	9	—	—	9
Los Angeles	11	—	—	11
Pi	9	—	—	9
	<hr/> 270	<hr/> 5	<hr/> 2	<hr/> 277

*Credited with twenty subscriptions to make up for omission in 1917-1918.

Summary of Alumnae Associations and Clubs:

Two hundred and seventy Subscriptions at \$1.00.....	\$270.00
Exchange on Checks15

Deposited in General Fund from A. A. and Clubs.....	\$270.15
Five \$5.00 Payments on Life Subscriptions.....	\$ 25.00
Two \$15.00 Payments on Life Subscriptions.....	30.00

Deposited in KEY Publication Fund from A. A. and Clubs....	\$ 55.00
--	----------

KEY PUBLICATION FUND

Receipts

September 1, 1918, Balance in Bank, per Last Report.....	\$ 4,705.00
--	-------------

511 Chapter Payments of \$5.00.....	\$2,555.00
-------------------------------------	------------

2 Chapter Payments of \$10.00.....	20.00
------------------------------------	-------

12 Chapter Payments of \$1.00.....	12.00
------------------------------------	-------

5 Alumnae Association Payments of \$5.00	25.00
---	-------

2 Alumnae Association Payments of \$15.00	30.00
--	-------

8 Single Payments of \$5.00.....	40.00
----------------------------------	-------

3 Single Payments of \$15.00.....	45.00
-----------------------------------	-------

Total Subscriptions	\$ 2,727.00
---------------------------	-------------

Transferred from KEY Publication Fund in Philadelphia	\$ 3,878.01
--	-------------

With Interest	144.28
---------------------	--------

4,022.29

One-half Balance from Former Administration.....	\$ 2,042.64
--	-------------

Interest to September 26, 1918.....	\$ 84.85
-------------------------------------	----------

Interest to March 26, 1919.....	134.10
---------------------------------	--------

Interest to September 25, 1919.....	229.47
-------------------------------------	--------

448.42

Total Receipts	\$13,945.35
----------------------	-------------

Withdrawals

January 6, 1919, Interest Transferred.....	\$ 144.28
--	-----------

September 23, 1919, Interest Transferred..	448.42
--	--------

592.70

Balance in KEY Publication Fund September 24, 1919.....	\$13,352.65
---	-------------

GENERAL FUND

Receipts

131 Chapter Subscriptions at \$1.00.....	\$ 131.00	
270 A. A. and Club Subscriptions at \$1.00.	270.00	
67 Single Subscriptions at \$1.00.....	67.00	
		<hr/>
		\$ 468.00
Advertisements (exclusive of those expiring May, 1919)	60.00	
Single Copies at 25c.....	14.29	
Single Copies at 50c.....	3.00	
Exchange on Checks15	
Amount allowed in 1918-1919 Budget for publication of THE KEY, Less Amount of December, 1918, KEY Bill of \$324.14, paid by Grand Treasurer	1,075.86	
Amount Allowed for Publication of Directory.....	500.00	
Interest from KEY Publication Fund.....	592.70	
		<hr/>
Total Receipts		\$ 2,714.00

Disbursements

1919		
January 7, Geo. Banta Pub. Co. Publication of October, 1918, KEY.....	\$ 327.08	
May 13, Geo. Banta Pub. Co. Publication of February, 1919, KEY.....	470.64	
May 13, Geo. Banta Pub. Co. New Plates for Cover of KEY.....	6.56	
June 21, Geo. Banta Pub. Co. Postage for December KEY, less credits.....	6.53	
June 21, Self for Mrs. McElroy's KEY subscription credited on KEY Bill	1.00	
September 11, Mrs. Robt. Graham. Preparing Material for Directory	28.16	
September 11, Helen G. Hutchcraft, Typing Lists for Directory	20.00	
		<hr/>
Total Disbursements		\$ 859.97
		<hr/>
Balance on hand September 25, 1919.....		\$ 1,854.03

ELIZABETH H. BARTLETT,
Business Manager
 of THE KEY.

BUDGET FOR THE KEY

October 1, 1919, to September 1, 1920

Receipts

Brought Forward from 1918-1919 Account.....	\$1,000.00
KEY Subscriptions	200.00
Interest from KEY Publication Fund.....	500.00
Advertisements	100.00
Advanced by General Treasury	100.00

\$1,900.00

Disbursements

Publication of KEY, 4 issues at \$450.00.....	\$1,800.00
Postage, printing, etc.	100.00

\$1,900.00

ELISABETH H. BARTLETT,
Business Manager
of THE KEY.

REPORT OF THE GRAND REGISTRAR

The Grand Registrar reports that generally speaking the archives of the chapters are in fair condition. There are ten complete copies of the ritual in the Grand Registrar's archives.

The spring examinations were sent in April instead of February. Papers were returned in due time (with a few exceptions).

Bids for making a Book of Ritual for the Grand Vice-president were received during the year and disposed of at the fall Council Session.

Respectfully submitted,

MARY R. LEAPHART,
Grand Registrar.

REPORT OF THE EDITOR OF THE KEY

Since last Council Session the December, 1918, February and May, 1919, KEYS have been published and the October, 1919, number has gone to press. The December KEY was a Washington number, devoted to news about the many Kappas who were doing war work in Washington, D. C. The February number printed fifty pictures of Kappas who were engaged in important patriotic service at home or abroad, to illustrate a twenty-two page story of war work records. As all the chapters were not represented in

this, Chi Chapter later in the year requested that a second installment of this be run in the October KEY, which is now being printed.

The May KEY was a catalogue, the first published since 1913, and the first time the KEY was used for this purpose. Lucy Hutchcraft Graham, the Director of the Catalogue, got together all the material for this, and did all the editing and proof-reading. It was delayed in publication, but as it was not ready in the spring it was thought better to hold it until the colleges opened in the fall.

In every KEY recently except the May number, Kappa work at Bellevue-Meudon has been stressed. Several delightful letters from Dorothy Canfield Fisher have been printed.

Sarah B. Harris has conducted the Alumnae Department, which contains special articles and news letters. Mrs. Everett Warner has kept up her department, Kappas Known to Fame. Rose Af-folter has written the exchange notes, but has now resigned. Elisabeth Bartlett has been a most efficient Business Manager. To all these the Editor extends thanks for their excellent work and faithful coöperation. The newly appointed exchange editor is Eleanor Aldridge of Beta Beta.

KATHERINE T. MULLIN,
Editor of THE KEY.

REPORT OF THE DIRECTOR OF THE CATALOGUE

JUNE 15, 1918—JUNE 15, 1919

<i>Chapter</i>	<i>Initiates</i>	<i>Deaths</i>	<i>Dismissals</i>
Phi	8		
Beta Sigma	6	1	1
Beta Alpha	6		
Beta Iota	14	1	1
Psi	10		
Beta Tau	11		
Beta Beta	10		
Beta Psi	1		
Gamma Rho	7	2	
Beta Upsilon	6		
Lambda	2		
Beta Nu	3		
Beta Rho	8		
Iota	14		
Mu	30	1	
Delta	13		

<i>Chapter</i>	<i>Initiates</i>	<i>Deaths</i>	<i>Dismissals</i>
Beta Chi	6		
Beta Delta	7		
Xi	5		
Kappa	7		
Chi	9		
Eta	16		
Upsilon	12		
Epsilon	7		
Beta Lambda	13		
Beta Zeta	19		
Gamma Alpha	12		
Sigma	11		
Omega	16		
Beta Mu	10	I	
Theta	12	I	
Beta Theta	18		
Beta Xi	13		
Beta Omicron	12		
Beta Phi	9		
Beta Pi	15		
Beta Omega	19		
Beta Kappa	8		
Pi	15		
Beta Eta	8		
Gamma Beta	5		
Gamma Gamma	30		
Gamma Delta	46		
Gamma Epsilon	27		

No reports were received by the Director of the Catalogue from Phi, Beta Iota, Lambda, Delta, Beta Chi, Eta, Beta Lambda, Beta Zeta, Beta Xi, Beta Phi, Beta Kappa, and Pi. The numbers supplied for these chapters had to be taken from the Annual Chapter Reports.

During the year 1919 a new catalogue was compiled and published in the May KEY.

Respectfully submitted,

LUCY K. GRAHAM.

REPORT OF CUSTODIAN OF THE BADGE

To the Grand Council of Kappa Kappa Gamma, Greeting:

At the close of my first year as Custodian I wish to express my appreciation of the support which I have received from the members of the Grand Council, from the chapters of the fraternity, and from the official jewelers who have served us so faithfully.

But particularly would I acknowledge my debt to my predecessor, Miss Cleora Wheeler, who, after turning over all archives in perfect condition with all supplies needed for another year, has painstakingly answered many questions and given advice on all perplexing problems.

The system of the Custodian's office has been worked out with such care and the Standing Rule which applies to the ordering of badges is so explicit that there are few chances for error except when a new corresponding secretary fails to take her duties seriously. Every member of a chapter should understand the details of badge order requirements. This would not only insure at all times a corresponding secretary who is informed regarding the matter but it would result in a body of *alumnæ* familiar with the regulations regarding the badge. For the active members our badge order system works little or no hardship but for the alumna member who is unfamiliar with the requirements, the delay in securing her badge seems needless. And much of it is needless because she does not send her order to the corresponding secretary of her chapter in the first place.

Only eight fines have been imposed during the year and these for violation of the Standing Rules in two ways: a badge order has been filled out and signed by the corresponding secretary and then sent direct to the jeweler instead of to the Custodian for countersignature, or the blank has been merely signed by the corresponding secretary and sent to the member, in this case usually an alumna member, for her to fill in the directions for engraving and delivery in spite of the fact that Standing Rule 59 says that the corresponding secretary must be responsible for the correct entry of these directions before adding her signature. Of the eight fines imposed three were on one chapter for the same offense and two on another, therefore only five chapters were fined. There has been much correspondence which should have been unnecessary because orders have frequently been sent in with data incomplete.

During the year eight hundred badge orders have been countersigned, distributed as follows: J. F. Newman, 383; Burr, Patterson and Company, 153; The D. L. Auld Company, 150; Shreve and Company, 62; The Hoover and Smith Company, 35; Wright, Kay and Company, 10; Toronto Trophy-Craft Company, 7. Ow-

ing to war conditions Weld and Sons have manufactured none of our badges during the year.

As to the style of badges sold my record is not complete since about thirty orders have come to me with the style of badge not indicated but marked "As ordered." Approximately then I can say that half the badges ordered have been plain keys. The remaining half have been jeweled keys in about the following proportion: nine pearl set badges, and three diamond or diamond combination to one badge set with other stones or in some odd manner.

The year has been marked by the increasing popularity of a style of badge more slender than the one in common use. This slender badge was first made by Shreve and Company and is the only type of badge made by that firm. For several years a similar badge has been made by J. F. Newman and so popular has this badge become that some of our other jewelers have declared themselves to be at a disadvantage because they were unable to furnish this new type of badge. With the approval of the Grand Council the Custodian has written to the jewelers not already making such a badge giving them permission to submit for approval a sample of a slender model. The popularity of this type of badge may be judged by the fact that half of the badges ordered during the year have been of this sort. It is not unreasonable to think that the badge is again passing through a period of change and that as the heavier, one-inch badge replaced the long flat one of early use, so the slender model will eventually replace the style which has so long been popular.

Respectfully submitted,

MAY C. W. WESTERMANN,

Custodian.

September 22, 1919.

REPORT OF THE SCHOLARSHIP COMMITTEE

The Scholarship Committee sent out a questionnaire this year to all of the chapters in an endeavor to find out just what they were doing to promote scholarship. Previously, we have merely had a chapter report of grades and percentages, but this year we thought that this additional information would help us to know how our chapters were working out their problems, how they stood

in comparison with other women's fraternities, and whether an honest effort was being made to improve scholarship.

The following questions were asked:

1. What is your chapter doing to promote the scholarship of its members?
2. Have you any definite policy of helping those who do poor work?
3. Is there any definite grade of scholarship demanded of freshmen before being taken into the fraternity?
4. Does your Panhellenic Association award a cup to the fraternity making the best scholarship record?
5. Was there any improvement this past year (1918-1919) in your scholarship over the previous year?
6. If any comparative chart of the standing of the fraternities in regard to scholarship was made by your university, state where your chapter stood.
7. State any other information not included in the foregoing points which you consider of interest along this line.

Nine chapters out of forty-four made no reports, viz.: Beta Alpha, Beta Iota, Beta Rho, Beta Delta, Chi, Epsilon, Sigma, Pi and Beta Eta. Reports as a whole were most satisfactory and seemed to show an honest and serious effort on the part of the chapters to make good in scholarship.

The means of promoting scholarship were various. Nearly every chapter reported that all grades were read in meeting, at times varying from once a year to once a week. Several chapters, Beta Kappa, Upsilon, Delta, Beta Phi, Beta Zeta, Theta, and Gamma Delta, require those who are deficient or have low grades to limit their social engagements and to study under supervision until such deficiencies or low grades are removed. Other chapters, Omega, Psi, Delta, Gamma, Alpha, and Kappa require enforced and supervised study, without the curtailment of social activities.

Some chapters, Phi, Beta Tau, and Lambda, require members to answer roll call with either "up" or "down" indicating whether or not all work is up to date or not. They also report on the number of cuts taken during the week and how many classes were attended unprepared. Any unsatisfactory report must be explained to the chapter.

Beta Lambda requires an average of 78 to live in the house.

Beta Kappa, Beta Theta, and Beta Pi require a B average for the entire chapter.

Gamma Alpha offers a prize of twenty-five dollars to the freshman making the best average. Beta Psi has thirty compulsory hours of study a week, on which the members report at meetings. At the end of the year the member who has most faithfully fulfilled these thirty hours and who makes the best standing in the final examinations receives the chapter loving cup.

Xi Chapter reports that it has never made any definite efforts to improve scholarship or to help its members because it has always stood first.

Mu and Beta Chi use a card index system of grades.

In regard to the second question the answers in general were more hazy. Few chapters have a definite policy of help apparently. In general the policy seems to be one of individual help. Some chapters, having houses, have enforced study hours for those doing poor work. In some places this studying must be done under supervision.

Psi, Xi, and Beta Phi are the only chapters reporting that they have no definite standard of admission for freshmen.

Chapters where Panhellenic awards a scholarship cup are about evenly divided with those where it does not. In a number of chapters there are scholarship cups awarded by others than Panhellenic. Beta Upsilon competes for a city Panhellenic cup. Beta Lambda, Iota, Beta Mu, Beta Pi, and Gamma Delta each have a chapter scholarship cup on which is engraved each year the name of the freshman making the highest average. Beta Tau presents two cups each year at their Panhellenic banquet, one to the sophomore who has made the highest average in her freshman year and one to the senior who has made the highest average in her junior year.

Two chapters report a systematic record of their members' college activities. Gamma Beta has the honor point system. Points are given to members receiving high grades as well as for honors gained in the university. The member having the most points is honored by the chapter.

Beta Chi supplies its members with suitable blanks on which is kept a complete record of each member's college activities. Twice a month these are reported on at the regular meeting. At least

three activities are required of each girl. The activities include attendance at all clubs and literary societies, Y. W. C. A. meetings, cabinet meetings, class meetings, athletic events, and social occasions. These reports give a very good idea of a girl's usefulness to her college and chapter and are making the chapter a distinct force in the life of the college.

Twenty chapters report a definite improvement in scholarship: viz., Phi, Beta Sigma, Beta Tau, Beta Beta, Beta Psi, Gamma Rho, Beta Upsilon, Delta, Beta Chi, Eta, Beta Lambda, Gamma Alpha, Omega, Beta Mu, Gamma Beta, Beta Theta, Beta Xi, Beta Omicron, Beta Pi, and Beta Omega.

Mu, Xi, and Gamma stood the same as last year. Five Beta Mu, Iota, Upsilon, Beta Zeta, and Beta Phi show a falling below last year's level while seven could not yet give the chapter rating as it would not be available until fall.

The reports were most interesting, and as a whole showed a more serious purpose in regard to scholarship. We have been able to tabulate much interesting material from which we can send helpful suggestions to chapters in the fall.

We wish especially to commend the reports of our new chapters. Besides showing a splendid scholarship record, the reports themselves were well written and most businesslike.

Respectfully submitted,

GRACE B. ROBINSON,

Chairman of the Scholarship Committee.

August 20, 1919.

REPORT OF STUDENTS' AID FUND COMMITTEE

NOVEMBER 13, 1918, to SEPTEMBER 20, 1919

Receipts

Balance on Deposit International Trust Co. Nov. 13, 1918.....	\$1,660.87
Interest.....	95.87
Chapter Tax.....	394.00
Interest Juliette Geneve Hollenbach Memorial Fund.....	200.00
Appropriated by Grand Council.....	1,000.00
Tax from Installation Fees of Gamma Gamma, Gamma Delta, Gamma Beta, and Gamma Epsilon.....	69.00
Note of Member of Beta Alpha, due Dec. 1, 1919.....	50.00
Balance Note of Member of Beta Alpha, due Oct. 1, 1918.....	130.00
Balance Note of Member of Beta Mu, due Sept. 1, 1918.....	35.00
Balance Note of Member of Beta Tau, due July 1, 1919.....	50.00

Balance Note of Member of Beta Beta, due Oct. 15, 1918.....	\$ 20.00
Note of Member of Beta Tau, due July 1, 1917.....	50.00
On Account Note of Member of Beta Tau, due Oct. 1, 1918.....	50.00
On Account Note of Member of Beta Sigma, due July 1, 1919....	100.00
Expenses Students' Aid Fund, July 1, 1917 to Nov. 13, 1918 from	
Grand Treasurer	23.10
Contributions as Follows:	
South Bend, Indiana A. A.....	9.00
Milwaukee A. A.	14.75
Philadelphia A. A.	80.00
Kansas City A. A.....	50.00
Beta Tau A. A.	5.00
Cleveland A. A.	10.00
Los Angeles A. A.	43.00
Cedar Rapids A. A.....	10.00
Portland A. A.	50.00
New York A. A.	225.00
Eta Active Chapter	300.00
Grand Council Member	20.00
Grand Council Member	30.00
Harriet Blakeslee Wallace, Beta Tau	10.00
Helen Humphries, Beta Delta	1.00
In Suspense, Excess in Bank Deposit	10.00
Total	\$4,795.59

Disbursements

Loan to Member of Psi	\$100.00
Loan to Member of Psi	100.00
Loan to Member of Beta Tau	125.00
Loan to Member of Beta Nu.....	150.00
Liberty Bonds (rec'd as contribution from Eta).....	250.00
Running Expenses Students' Aid Fund.....	12.74
Total	737.74

Balance on Deposit International Trust Company, Denver, Colorado	\$4,057.85
---	------------

Notes Held by Committee

Note of Member of Beta Chi, due July 1, 1916.....	\$ 100.00
Note of Member of Beta Chi, due July 1, 1917.....	100.00
Note of Member of Beta Chi, due July 1, 1917.....	50.00
Note of Member of Lambda, due July 1, 1917.....	125.00
Note of Member of Beta Tau, due Dec. 1, 1918.....	75.00
Note of Member of Xi, due July 1, 1919.....	300.00
Note of Member of Psi, due July 1, 1921.....	200.00
Note of Member of Psi, due July 1, 1921.....	150.00

Note of Member of Psi, due July 1, 1923.....	\$ 100.00
Note of Member of Beta Tau, due Oct. 1, 1918 for \$100.00.	
Balance due	50.00
Note of Member of Beta Tau, due Oct. 1, 1918.....	100.00
Note of Member of Epsilon, due June 1, 1919.....	80.00
Note of Member of Pi, due July 1, 1919.....	100.00
Note of Member of Pi, due July 1, 1919.....	100.00
Note of Member of Pi, due July 1, 1919.....	100.00
Note of Member of Beta Beta, due June 1, 1920.....	250.00
Note of Member of Beta Sigma, due June 1, 1919 for \$150.00.	
Balance due	50.00
Note of Member of Beta Nu, due July 1, 1920.....	35.00
Note of Member of Beta Kappa, due July 1, 1921.....	300.00
Note of Member of Beta Nu, due July 1, 1920.....	300.00
Note of Member of Sigma, due October 1, 1920.....	125.00
Note of Member of Psi, due April 1, 1920.....	50.00
Note of Member of Psi, due April 1, 1920.....	50.00
Note of Member of Beta Tau, due June 1, 1921.....	125.00
Note of Member of Beta Nu, due March 1, 1921.....	150.00
<hr/>	
Total Due on Notes	\$3,165.00

Assets

Liberty Bonds	\$ 250.00
Balance on Deposit International Trust Co., Denver.....	4,057.85
Notes Due	3,165.00
Expenses Due from Grand Treasury	12.74
<hr/>	
Total ..	\$7,485.59

The assets of the fund also include the "Juliette Geneve Hollenbach Memorial" which consists of \$5,000 Delaware and Hudson Co. 1", and Refunding 4% Mortgage Bonds due 1943. The bonds are to remain intact, the interest only being used as collected.

Seven applications for loans amounting to \$1,225 have been received and approved.

Respectfully submitted,

CHARLOTTE POWELL GODDARD, *Chairman.*

Students' Aid Fund founded 1909 with balance of \$289.32 (present assets being \$7,485.59) has loaned to 44 members from 21 different chapters.

So far no loans have been lost.

Additional assets from October 1, 1919, to July 1, 1920, estimated as follows:

Interest of J. G. H. Memorial Fund.....	\$ 200.00
Chapter Tax	400.00

Interest on Balance of Fund on Deposit.....	\$ 10.00
Alumnæ Association Pledges:	
Kansas City	50.00
Columbus, Ohio	50.00
North Shore	30.00
Denver	30.00
Dallas	15.00
Walla Walla	15.00
Philadelphia	90.00
Cincinnati	50.00
Total	\$1,030.00

REPORT OF THE HISTORIAN, AUGUST, 1919

To the Grand Council of Kappa Kappa Gamma, Greeting:

The triennial history reports due from chapter registrars should have been received at the close of the college year just ended. Previously the Historian has sent out in the spring notices to the chapters reminding them of this duty, but the historical reports thus obtained have been found to be lacking in uniformity that they are quite unsatisfactory to use in compiling the fraternity history. Many times they are needlessly long and detailed and composed too much of the social activities of the chapter, while in most cases many of the items of importance in compiling uniform statistics concerning all chapters are omitted entirely. Furthermore so many chapters are hopelessly delinquent in presenting any historical report that the Historian begs to present the following suggestion:

That uniform blanks be prepared for these triennial reports.

That these blanks require the essential data necessary from each and every chapter.

That space also be left for other important items in the local history of each chapter.

Further, that a special report on War Activities be required in addition to the above from all chapters this fall. The information thus obtained to form the subject matter of one chapter or article in the history to be published.

Since it was impossible to prepare such blanks in time for reports at the end of the recent college year, and since practically none of the chapter registrars have submitted such a report this spring, the Historian begs the Grand Council to consider the sug-

gested blank enclosed and amend it as seems advisable. If the plan then meets with your approval, I suggest that a suitable number be ordered printed at once and made ready for distribution as soon as the colleges open in the fall.

The work of compiling the history has again been taken up and an effort is being made to clear up some of the uncertainties still existing in regard to the early chapters. Following a suggestion from the Grand President the Historian would like to ask that special articles to be incorporated into the history be prepared on the following subjects by persons particularly qualified:

1. History of THE KEY.
2. History of the Badge.
3. History of the Scholarship Fund.
4. History of the Kappa Relief Station at Bellevue-Meudon, France.

Trusting that these suggestions may meet with your approval, I remain,

Faithfully,

FLORENCE BURTON ROTH.

REPORT OF THE SONG BOOK COMMITTEE

Orders have been received for 65 books—\$81.25.

These books have all been sent and the last edition is now depleted. Corrections are being made for a new edition.

Respectfully submitted,

NEVA HAIGHT SCHULZE,
Chairman pro tem.

EDITORIAL COMMENT

APOLOGIA

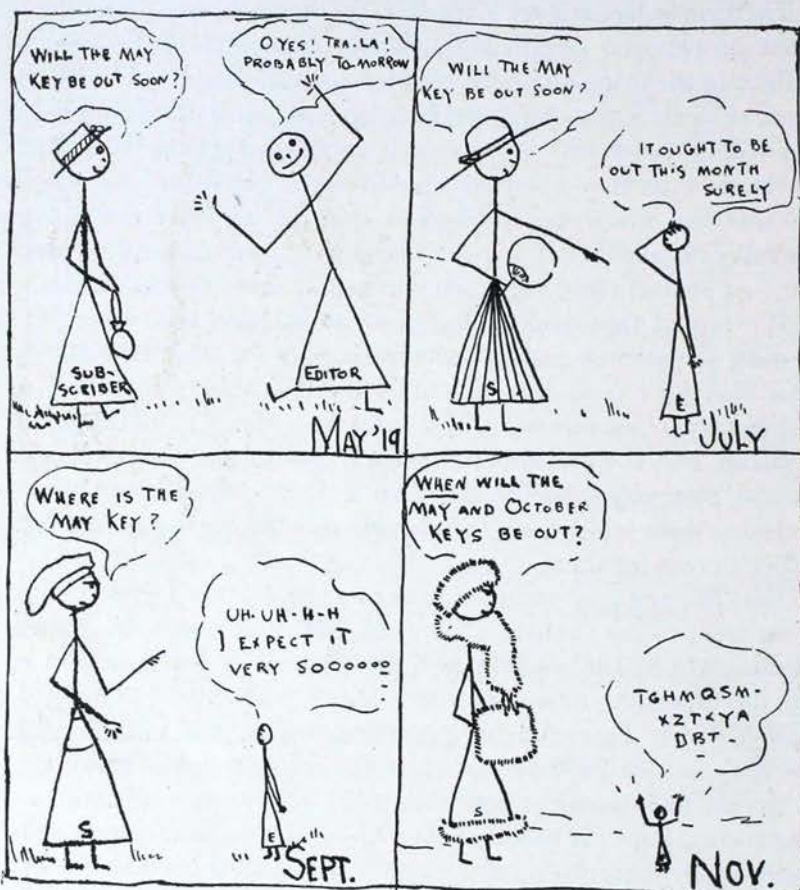
The Editor has moved. She lives in a glass house. You know what people who live in glass houses cannot do. She used to delight in throwing stones at chapter correspondents who did not send in their letters for THE KEY on time, and she published a horrifying "black list" every month, in which appeared the names of the delinquents. She hasn't published a "black list" for a year, because she would feel obliged to lead off with her own name, and why be an editor if you can't keep your own name off a "black list," or abolish the thing when you belong there yourself?

We owe a thousand apologies to all Kappas who have been waiting so patiently and so uncomplainingly for their KEYS lately. The May KEY (you *may* have it by the time this is published) is a directory. Our director of the catalogue, Mrs. Lucy Hutchcroft Graham, edited it and superintended it, and as she wanted it done in the best way possible, she had a lot of complicated cross-indexing done which took months and months of time of the publisher's cross-indexers.

But, like trumps, you sent in your copy for the October KEY. That went to the publishers' as usual, but there was a delay there because we had to explain to Uncle Sam why we were getting out our October number before the May edition. Why that should bother Uncle Sam and his postoffice, we do not know. Why couldn't he just have put us down as eccentric and original?

So you had to send in your December letters again without having seen a KEY for months. We know this is annoying and we realize why there are so few chapter letters in this number. We realize that you were probably thinking that THE KEY had disbanded entirely.

But if this number comes out on December 15, as it should, take up hope again, and let us have *every chapter* represented in the February KEY with a letter.



CONVENTION

will be held

NEXT SUMMER

in

MICHIGAN

Beta Delta Kappa, and Xi, the hostess chapters, will tell
you all about it in the February KEY. Begin
now to plan to be there.

FIFTIETH YEAR OF KAPPA

CHAPTER LETTERS

Next chapter letter due January 1, 1920.

As the February KEY will be an Alumnæ number, chapter correspondents are asked to send all the news about alumnæ that they can find.

THAT HOUSE-PARTY CHAPTER HAS ANOTHER

Circus

New Hamburg

Beta Sigma, Adelphi College

September 9—16

The famous Kappa circus will come to New Hamburg for its fourth season after a nine months' engagement at Adelphi College, Brooklyn, New York. Acrobats, clowns, trained animals. Admission free to villagers. Do not fail to support the show. Accommodations for the troupe can be had at Mrs. Hughes'. Expenses not paid by manager.

That announcement, embellished with the likeness of a ferocious camel, was the invitation our president sent out for house party, and although the villagers did not get a really intimate view of our gay doings, they were evidently impressed, for when one of the girls arrived a day late and asked the jitney driver if he knew where Mrs. Hughes lived, he did not hesitate in replying, "Oh! yes, she's got about thirty girls—college girls—up to her place on the hill." Which was rather surprising, as we numbered but fourteen. However, fourteen is a splendid number for a house party, and we tramped and swam during the day, and in the evenings gave stunts or made fudge while Rosalie read aloud from *Fair But Faithless*. It is a thrilling tale, sold in every Five and Ten in the country, and the motivation is really superior to that of *Pride and Prejudice*.

Everyone at Adelphi is deep in work for the Kirmess we are to give this month. Kappas, particularly, have to hustle, as the chairman is Evelyn De Motte, one of our sophomores, and we want to set an example of industry. We carry tatting and crocheting around in our pockets, and write innumerable letters to butchers, bakers, and candlestick-makers to beg for their wares.

Between times we have been getting acquainted with the freshmen, and planning and having the two parties which the Panhellenic Association here allows us. The class of 1923 at Adelphi College is large, and has a fine lot of splendid girls.

Bid day is more than a month earlier this year than last, and the Panhellenic Association has made a new ruling about answering bids. If a girl accepts a bid, besides sending a written answer to the fraternity that evening, she has to go to a house which is named in the bid. Then, when the girl next appears in college she will be pledged to the fraternity which she has chosen.

We are very proud of our three juniors who have all been elected to the honorary English society of the college, the Round Table.

ALICE BENNET.

WILL NOT DISOWN BELGIAN BABY

Beta Iota, Swarthmore College

When we came to sum the things we have been doing so far this year, we began to wonder why we have all been so busy every second, for no big things stand out particularly. But college has settled down to the pre-war condition and football, dances, and all sorts of lively parties occupy all of our spare moments.

Our pledge day, under the new system, does not take place until Christmas and in the meantime there is supposed to be no entertaining of freshmen. So far the plan has worked remarkably well. The system, however, has made us know each freshman better than we probably would have done otherwise, and they are a dandy bunch.

We have decided to adopt our Belgian baby for another year, and do our little share toward carrying on Kappa's good work.

Lucy Penrose has been starring on the *Phoenix*, and Helen Griscom on the *Halcyon*. Betty Miller was one of the sophomores elected to the English Club, and has been distinguishing herself in their meetings ever since.

Lucy Penrose, Marjorie Kistler, and Helen Griscom, being on "exec," are of course feeling responsible for our morals and behavior.

Eight Kappas are on the hockey varsity squad, and several stand a fine chance of making the team.

This year we are glad to say that we have had many of our alumnae back, and it is great to know that they're still thinking about us, for we think of them often and are so glad when they come to see us.

Our college life may not sound particularly thrilling, but we just hope all the other Kappas are having as happy and profitable a year as we are.

ELIZABETH ATHERHOLT.

ENJOYING NEW CHAPTER HOUSE

Psi, Cornell University

We have eighteen pledges. It seems like a large number but the girls were all so nice that we couldn't have taken any less.

Two of our pledges are juniors, Gwendolyn Evans, Brooklyn, and Barbara Murless, Hartford, Conn. Four are sophomores, Catherine Burnham, Brooklyn; Rose Hales, Port Richmond, S. I.; Lazette Spies, Cleveland, Ohio; Louise Roth, Chicago. The other twelve are members of the freshman class. They are Helen Banks, Ithaca; Mary Butler, Plattsburg; Barbara Deuel, Chenango; Anne Durand, Minneapolis, Minn.; Isabelle Masters, Cleveland, Ohio; Anne Pope, Chattanooga, Tenn.; Gertrude Mathewson, S. I.; Virginia Needham, Ithaca; Ruth Seymour, New York City; Dorothy Sharp, Greenwich, Conn.; Catherine Strunk, Ithaca; and Mary Willcox, Ithaca.

This year Panhellenic voted a three weeks' period in which to become acquainted with the freshmen. The first week of this period we had teas

every day. The second week we had two informal dinner parties and one formal party. The third week we had three dinner parties.

We were glad to affiliate at one of our first meetings Lois Eliot and Irene Huebel, Kappas from Indiana.

We have a new and very attractive house this year. We would like very much to have you pay us a visit if you are in this part of the country.

LOUISE TARBELL.

GOOD PLANS FOR ACQUAINTANCE DAYS

Beta Beta, St. Lawrence University

The college year is well on its way, and Beta Beta spirit, as well as that of St. Lawrence, seems finer and stronger than ever. Although the first two weeks of college were short, we learned to know the freshman class, and now we have eight fine pledges: Susan Bernier, Eloise Blood, Elizabeth Crisler, Mary Gunnison, Edith Lynch, Laura Spurr, Dorothy Thompson, and Edith Zabriskie.

As always, our alumnae are taking a great interest in everything pertaining to the active chapter. On our first acquaintance day, we took the girls in cars to Rag-na-rock, a big house in the country, where we danced, did stunts, played games, and had a delicious picnic supper by big open fireplaces. Another day we had a tea at the home of one of our active members and supper at the chapter-house later. On our third and last day we had a progressive dinner at the homes of some of the alumnae, and we felt that it was a splendid way for the older Kappas and the possible pledges to get acquainted.

Several of our out-of-town alumnae were with us during the first weeks of college: Mary Vilas, '17, Eleanor Sperry, '18, and Dorothy Singlehurst, '19; and a few have visited us at different times since. We were very glad to see one of our oldest alumnae, Dr. Hessie Delevan Smith, '86, who has lived in California for thirty years since she left Canton. Dr. Smith was a member of the Browning Society, which became a chapter of Kappa.

Mrs. A. Barton Hepburn, a loyal Kappa alumna and graduate of St. Lawrence, has been chosen treasurer of the Roosevelt Memorial Association. She is a trustee of the university and has served the college in many ways.

On Hallowe'en night we gave our first informal house party. The house was most attractively decorated with crêpe paper and lighted with grotesque jack o' lanterns and covered lights. We considered it the best ever!

Beta Beta is starting the year right in regard to scholarship. We all profited by a talk given the chapter and pledges by a member of the scholarship committee of our local alumnae association.

Beta Beta extends heartiest Christmas greetings to all.

LAURA C. RUSSELL.

RAISING FUND FOR NEW GYMNASIUM*Gamma Rho, Allegheny College*

It seems that not more than a week can have gone by since I wrote my letter for the November KEY; but it has been almost two months and a lot has happened in that time. I had hoped to be able to introduce our new pledges in this letter, but "bidding day" is the very day that the December KEY will go to press; so suffice it to say that Kappa will come in for her share of the best girls and you'll hear about them in the next letter.

Gamma Rho returned nineteen out of twenty-two girls. All who didn't return were juniors. Alice Grenelle was forced to remain at home because of an illness. Carolyn Brownell is at Hood College, Fredrick, Maryland. Irene Hayes is attending Rochester Business College, Rochester, New York.

Our chapter-rooms have been greatly improved this fall by electric lights, new paper, a new dining-room rug, table light, curtains, and a few other things necessary to put them in a good condition.

The main interests at Allegheny at present are freshmen, football, and the campaign for our new gymnasium. There are fine freshman girls this year and I promise to tell you about some of them later. You will be glad to meet them, I am sure. We have had only two football games since the season opened. One we won from St. Bonaventure and one we lost to our old rival, Grove City. The Allegheny students will take great pride in their new gymnasium; not only it will be a wonderfully equipped gymnasium but also because they are all taking an active part in the campaign for funds. The students here have a wonderful spirit. They stand back of every move for the good of the college.

The Meadville Alumnae Club has played an important part in Kappa pleasures this fall. The first day of college, September 23, they entertained the entire chapter at a dinner at the home of Mrs. W. C. Carpenter. At this time our Province President, Miss Helen McClintock, whose home is in Meadville, gave an interesting and helpful talk to the girls. Since then the alumnae have been entertaining the active girls, according to classes, at informal teas. I hope all Kappa alumnae are as cordial to their active girls as the Meadville alumnae are to the Gamma Rhos. On October 5 the active girls entertained the alumnae at a party in the rooms. As is the usual custom the sophomores helped entertain with two clever stunts.

Three of our last year's seniors are sure enough school teachers, and they seem to be enjoying it a lot, too. Cecile Edwards is teaching in the Oil City High School, Madeline Rishell is in the Johnstown public schools, and Lucile Richard is doing primary work in Meadville. Already this year Bess Ling, '12, Helen Davison, '17, Helen Kulp, '17, Cecile Edwards, '19, Claire Gates, '19, Jean McKenzie, '11, and Helen McKenzie, '16, have spent week-ends as guests of the chapter.

The women of Allegheny are very glad to have their former dean, Alice H. Spalding, with them again this year after an absence of a year due to a severe illness.

Helen Easterwood, '16, is doing social settlement work in Baltimore, Maryland.

On October 14, Florence Downing, '16, was married to J. Blair Sutton of Indiana, Pennsylvania. Mr. Sutton was at our "Kappa Kamp" for a short time this summer and all the girls who met him are sure that Florence will have a fine husband. We hope to see them both at "Kamp" next summer.

Already a few honors have come to us, which I feel proud to tell you about. Marguerite Diefenderfer was initiated into M. N. S. Marguerite McCune was elected vice-president of the junior class. Helen Thoburn, Edith Potter, Marguerite McCune, and Marian Morrison were invited to join Le Petit Salon.

With our present prospects everything points to a happy and successful year. Gamma Rho wishes the same to every sister chapter.

MARIAN MORRISON.

INSPIRATION FROM FOUNDERS' DAY BANQUET

Beta Nu, Ohio State University

Excitement of pledge day is over and Beta Nu is proud to announce the pledging of nine new freshmen. Ann Farber, Althea Adams, Margaret Carter, Helen Hoskins, and Sarah Robinson are town girls; Ruth Menke, of Greenfield, Margaret Lea, of Sandusky, Dorothy Kunning, of New Bremen, and Beatrice Sherwood, of Lima, are the out-of-town girls.

Many of the girls of this chapter have had the pleasure of visiting the girls of Beta Delta chapter in Michigan. You see, our football team played Michigan at Ann Arbor this year so we took advantage of the game to meet some of our Kappa sisters. I know we will all remember our trip there with greatest pleasure. The girls surely made us feel at home and entertained for us with a tea and a dance, giving us a good chance to become better acquainted with them.

We have held initiation for eight girls and now they are all striving to uphold Kappa ideals with the best of enthusiasm and spirit.

Kappa is carrying off honors in college activities as well. Violet Carter, Anita Seeds, and Alma Dickey made Glee Club. Helen Hoskins has been elected secretary of the freshman class. Dorothy Browne is secretary and treasurer of the Women's Panhellenic Council. Minnette Fritts is president of Mortar Board, social chairman of Y. W. C. A., also member of social committee of College Activities.

Founders' Day was celebrated by Beta Nu with a banquet at the Chittendon Hotel. The entire chapter with pledges and a good representation of alumnae attended. Addresses were given by older members, the freshmen presented a stunt, while the initiates entertained with a "sing." We were all made to realize more the Kappa ideals and each one left with a wish in her heart that Founders' Day might come oftener than once a year when it means such a get-together party as was enjoyed by Beta Nu this year.

We have had one marriage and one announcement since college opened this year. Elizabeth Born was married to Gerald Baron of Boston, Massa-

chusetts, and Elma Hamilton, '18, announces her coming marriage to Zaner Ebright, Beta Theta Pi, on Thanksgiving morning.

We all send best wishes for a happy New Year and a merry Christmas to all our Kappa sisters.

GERALDINE ROUSH.

A KAPPA CAMP FOR A WEEK

Beta Rho, University of Cincinnati

This summer Beta Rho chapter succeeded in having a Kappa Camp—an ambition of several years' standing. A cottage was rented for a week at Franklin, Ohio, where fourteen of us had a jolly time together. We all hope that in the future we will have a camp somewhere every summer. It certainly helps to promote a feeling of good-fellowship among the girls, and especially between those who are separated during the college year because of the difference in classes. Throughout the remainder of vacation Beta Rho held all-day meetings once in every two weeks, as it has done for several years. Many topics were discussed, with the betterment of our chapter in view.

Now that vacation is over, our members are once more buckling down to their work. The active chapter is temporarily smaller than it was last year, several of the girls having graduated; but we hope soon to have our membership greatly increased for the time of pledging is drawing near. Our first party, on October 25, was a football tea. The table represented a gridiron with dolls in football attire; tiny footballs were given as favors. Many fine girls have come up to varsity this year.

By the time our next letter to THE KEY is due we hope to be able to introduce to our sister chapters our new pledges.

FLORENCE GAHR.

WORKING TO KEEP SCHOLARSHIP CUP

Delta, Indiana University

Delta welcomed twenty girls back to the fold at the beginning of the first semester. We have these pledges whom I should like to introduce to the Kappa world: Mildred Sheets, Benton Harbor, Mich.; Harriet Sweet, Martinsville; Marvell Padget, Ruth Racey, Vincennes; Gail Hammond, Helen Cox, Wilhelmina Maas, Indianapolis; Abbie Dyer, Worthington; Elizabeth Graff, Gary; Carol Humrichouser, Plymouth; Lola Dunn, Chilicothe, Ohio; Marybelle King, Muncie; Helen O'Neill, Washington; Mary Hills, Colorado Springs, Colo.; Alta Funfhouser, Evansville; Mildred Emmert, Greensburg; Virginia Caylor, Noblesville; Katherine Wiley, Marie Woolery, Grace Davis, Marion Morris, Alberta Jenkins, Bloomington; Lois McDonald, Anderson; Charley Gunn, Hot Springs, Ark. We pledged them formally September 25.

Our pledges just now are busy trying to keep our beautiful silver loving cup, which was presented to us by Panhellenic for the highest interfraternity scholarship last semester. A fraternity must make superior grades for

three consecutive years before it can set the cup on its mantel for once and for all.

Really the merits of our pledglings are many and I may surely enumerate a few. At our last friendship party given by the Women's League, they gave the cleverest stunt entitled "Book Nook Special." It was entirely original. Also several of them tried out for Garrick Club, our dramatic society, and three of them made plays with very probable future membership in the society.

We had an informal dinner dance at the house, only upperclassmen attending. We also gave a reception for our new chaperon. Alumnae and representatives of other sororities were invited. The freshmen are now planning their first party which will be an informal dinner dance.

Dan Cupid has been especially busy this month with us. Our October brides are Myla Thornburgh, Mildred Woods, Willa Robbins, and Pauline Reed.

Delta was fortunate in affiliating Grace Milner from Upsilon chapter.

One of our active girls, Martha Craig, has left for Florida for a few months. We expect her back, however, for the second semester.

Just now we are busy preparing for our mid-semester examinations. We are hoping for the best, and wish you all success in yours.

DEAN FINCH.

BOUQUETS FOR ALUMNÆ

Epsilon, Illinois Wesleyan

Epsilon bid and pledged nine girls October 11, as follows: Helen Niehaus, Helen Crumbaker, Loraine Kraft, Louise Lackock, Esther Champion, Buclah Howard, Gladys Vincent, Lucile Thompson, and Lelia Sweeting. After the pledge service the Kappa Alumnae Club gave us a supper. It is their hearty coöperation that has so helped us in getting acquainted with the new girls in college. We have that secure feeling in knowing that our alumnae are thoroughly interested in all we do. We had three large parties, besides our individual spreads. The last party before pledge day took the form of a balloon dinner at Sinabelle Read's home. Our "prospectives" with every active member and a goodly number of alumnae were present.

The Wesleyan School of Music is directly affiliated with the college and the students in the music department are eligible to fraternities. We find this broadens the interests of the students.

Our Kappa girls are active in their different classes. Verna Terwillegar is a member of the Student Council. Mary Kraft is secretary of the Y. W. C. A. We have impressed on all our girls the importance of working with the Y. W. C. A. We are proud to report a 100% membership in it.

We are having a spread every two weeks for the purpose of getting acquainted. We sing our Kappa songs and have a general good time.

Epsilon unites in wishing you all success in your work.

IRENE QUINN.

FIRST ON SCHOLARSHIP CHART

Beta Delta, University of Michigan

In spite of the fact that our cook fell down the kitchen stairs and broke her arm, and our new dining-room furniture arrived minus the tables, we "took the pick of the freshmen." Already three of them have started out to win laurels for Kappa. Margaret McIntyre was elected vice-president of the freshman class and Elizabeth Humphreys, secretary. Also, Helen Sturgess was elected a member of the freshman girls' social committee. The other pledges are Dorothy Whipple, Joyce VanAlstine, Genevive Hoyt, Mary Buckbee entering as a junior from Vassar, Dorothy VanDeursan, Blanche Bryan, entering as a junior from Lake Erie College, Maude Hindman, a junior from the Grand Rapids Junior College, Amanda McKinney, Helen Partlow, Helene Torry, Irene Van Slyke, Ruth Goodhue, and Ruth McClelland a 1919 graduate of Wellesley, commencing her Master's degree in landscape design. We are very glad to have with us as affiliates Helen VanZandt from Beta Mu and Myra McLaughlin from Omega.

Anne Kirkpatrick and Rose Sturmer have just been elected to Mortar Board, the national honorary society for senior women. So now Kappa has five members in Mortar Board, Kathryn Glass, our house president, Ruth Jennings, and Marguerite Chapin having been elected last spring.

We consider ourselves most fortunate to have Mrs. Stark, a Kappa from Xi chapter, as our chaperon for this year. She has been a true Kappa mother to each and every one of us, and we attribute our success largely to her.

Two of our juniors, Aletha Yerkes and Marion Bath, have just been elected to Wyvern, the junior honorary society for girls.

Last but not least we are proud of our place on the scholarship chart, for we feel that during the last year every member of the chapter has a share in raising our status to that of first among women's fraternities at Michigan on the scholarship chart.

FRANCES BUCHBEE.

\$1,200 MADE AT ALUMNÆ FAIR

Chi, University of Minnesota

In the last month Chi chapter has been leading a happy, pampered life with her eighteen lovely freshmen. In October we had the good fortune of a visit with Mrs. Leaphart. We were much disappointed when we found that she could stay only a few hours, and doubly sorry that she did not have time to meet our alumnae and our then prospective freshmen. But even the flying call was delightful.

Football season is at its height, and we are making great plans for the Illinois-Minnesota game, hoping that we may have some of the Beta Lambda Kappas with us. Ten of our girls have accepted the kind hospitality of the Madison chapter.

A few days ago the Chi alumnae gave a bazaar at the Plaza Hotel with great success. They have been congratulating themselves ever since the

reports came in, for they made \$1,200. Our fair is one of our big annual events. This year the active girls gave a one-act play under the direction of Miss Helen Austin, and took charge of the dance in the evening. The pledges were cash-girls.

We want all of you to know our freshmen at least by name, and we hope that some day, perhaps at convention, you will know them as we do. They are Ruth Ainsworth, Delight Allen, Dorothy Brown, Theodosia Burton, Harriet Caswell, Catherine Catherwood, Milla Clement, Cordelia Collins, Marion Fowler, Charlotte Keyes, Alice Lindley, Evelyn Martin, Alberta Nesbitt, Ruth Peik, Gertrude Romans, Katherine Shenehon, Dorothy Stevens, Katherine Zirkelbach.

We wish you all a happy Christmas holiday and the best success for the New Year.

ELEANORE M. MATHEWS.

TWO 100% PERFECT ALUMNÆ HERE

Beta Omicron, Tulane University

Two weeks are now the time allotted the fraternities for becoming acquainted with the "freshies." It was a big job on both sides, but Beta Omicron can find no room to complain. She now boasts of fifteen pledges added to her already average-size chapter of twenty-six. They are: Helen Aldrich, Marjorie Calender, Isabelle Carre, Frances Daniels, Mildred Daniels, Alice Foster, Maude Fox, Evelyn Gladney, Eleanor Gould, Mary Johnson, Marjorie Moss, Claire Parkhouse, Mary Perkins, Susan Townsend, and Althes Werple.

Mrs. Gillican, formerly Lucile Vardell, a charter member of Beta Omicron, has always been known as one of our most interested and generous alumnae. To add to her already overflowing cup she has summoned our entire chapter active and pledges to spend Hallowe'en week-end at "Meredith," her summer home, at Pass Christian, Mississippi. Of course we have all accepted, and are at this moment packing our bags for this wonderful holiday.

Last but not least we would add words of praise and gratitude for Mrs. Hammond née Hilda Phelps, to whose loyal support and sound judgment we probably owe the very fact that we are in existence and able to attend our delightful house party.

BERTHA LATHROP.

GOOD RESOLUTIONS MADE

Omega, Kansas University

K. U. has been in session for more than six weeks, and it is hard to think back to the beginning of the year and realize that things were not always just as they are now. The first week of confusion, with the pleasures of reunion with the old girls and the welcoming of the new ones, seems long past, and we are settled down to the business for which we came to college.

Our new housemother, Miss Martha Valentine, of Topeka, has taken her place at the head of our family with a gentle firmness that has made us love and respect her. Our fourteen new freshmen have taken up their duties and privileges with true Kappa spirit and enthusiasm. They are so much a part of our chapter that they might have been with us always. Knowing that they will make Kappas of the finest sort we proudly introduce to you: Katherine Jackman of Lawrence; Frances Pierce and Marion Montgomery of Junction City; Mary Lowry, Helen Thompson and Marion McDonald of Kansas City, Mo.; Nell Carey and Constance Degnan of Hutchinson; Margaret Brubaker, of Wichita; Helen Peck, of Arkansas City; Katherine Keefer of Olathe; Virginia Puffer of Burlington; Virginia Schwinn of Wellington; and Beth Romans of Brookline, Mass.

There are all sorts of girls with all sorts of personalities. Beth Romans, besides having the distinction of being the fifth Kappa in her family, has spent nine months in France helping the Y. M. C. A. entertain bored soldiers. Virginia Puffer has begun her college career by running for freshman representative of the Women's Student Government Association, and Marion McDonald is a candidate for representative in the Women's Athletic Association. We expect Mary Lowry and Nell Carey to acquire all sorts of musical honors, and the others, just as talented in other lines, will have plenty of time to rise to fame.

So much for the freshmen. But, you might ask, what are the upper-classmen doing? Mary Samson, our president, is doing her best to set an example. There is not an organization on "the hill" that could get along without her. She is president of Theta Sigma Phi, honorary journalistic fraternity, and chairman of the social committee of the Y. W. C. A. Wanda Ross is chairman of the Big Sisters, and Edna Burch of the meetings committee of the Y. W. C. A. Dorothy Dawson is treasurer of the Women's Student Government Association. Angela Fogarty and Edna Burch belong to Omicron Nu, honorary home economics fraternity, and Virginia Melvin, Mary Samson, and Wanda Ross are members of the Phi Lambda Theta, honorary Educational society.

On November 3, the Y. W. C. A. will "put on" a benefit performance of *Fifi of the Toy Shop*, in which Irene Seery has the lead and Mary Samson, Bernice Mickel, and Nell Dehart Weaver will take part.

It is not so much what we have accomplished in these six short weeks, but what we expect to do and what our general attitude is, that is most important. It can best be shown by these resolutions, which were adopted at our first meeting:

In the college at large—to make friendships outside our own small circle.

Within the fraternity—to treat the house-mother with respect and courtesy; to strive for better scholarship; to have a friendly attitude toward our freshmen but to make them realize their responsibility; to instill a sense of individual responsibility in living up to rules, in taking part in

college activities, and in our attitude toward men; to pass as few rules as possible but to live up to every rule.

Omega sends best wishes for a successful year.

CYRE B. SWEET.

TWENTY-ONE KAPPA FRESHMEN

Sigma, University of Nebraska

Sigma chapter, as all her sister chapters in this wonderful post-war year, is having an opportunity to show her real worth in normal times. Many lovely girls came up to college this year, and twenty-one of them are proud wearers of Kappa's pledge button. Our new Kappa house, into which we moved this fall, is certainly full to overflowing with all these freshmen and the many old girls who came back. Indeed, this is true of all of Nebraska's sororities and fraternities. To go along the campus and see so many old faces makes one forget that there ever was a war.

This year, since losing our Mrs. Miller to the lucky Manhattan Kappas, we have a new chaperon, Mrs. McHenry. During the first week in October we entertained members of the other chapters and their chaperons at an informal reception in her honor. Our first Kappa dance was held November 1 and was given by the freshmen.

Jeanette Moore, our president, has just been elected to the *Cornhusker* staff for the coming year. She and Adelaide Elam are new Valkyrie, senior society, members.

Myra Bishop is our new member to Black Masque, senior honorary society, and is also president of the Big Sister League.

Mary Newton is this year's Silver Serpent, junior society, and Almarine Campbell is the new sophomore Xi Delta. Marjorie Reese was elected treasurer of the sophomore class.

We are especially glad to have the Lincoln Alumnae association of Kappa reorganized with a membership of forty. Among the many things they have planned to do is to have two alumnae present at each meeting of the active chapter. This will certainly bring the alumnae and active members into a closer fellowship.

Several Kappa weddings have taken place recently: Laura McRoberts, '19, was married October 22 to Don Stewart, '15, Beta Theta Pi. Cecil White, ex-'20, to Ted Loomis, Delta Tau Delta.

We also have a new Kappa baby, a daughter was born to Josephine Burkett Farquhar, '19, on October 17.

Sigma sends best wishes to all our sister chapters.

ADELAIDE ELAM.

VISITED BY GRAND SECRETARY

Theta, University of Missouri

Theta chapter sends greetings to all her Kappa sisters. We are in the midst of a most prosperous year in every way. We have some new mem-

bers, and are indeed proud of their ability as freshmen and of their possibilities as active members.

Our banquet was a splendid success, as I am sure every Kappa Founders' Day banquet was. In the past we have held it at our house, but this year we celebrated at the Daniel Boone Tavern on account of the large number who attended. It was splendid to stop and think, during the evening, of the hundreds of girls who were having the same wonderful experience.

Our chaperon, Mrs. Bella Kirkbride, who has been with us for twelve years, is going to leave soon. She has been such a fine Kappa mother to us that we shall find it hard to adjust ourselves to another chaperon. To show our appreciation of her faithfulness to us, we gave a toast to her at the banquet and presented her with a gift from the active chapter.

Our grand Secretary, Mrs. Kemp, visited our chapter about the first of October. We enjoyed her visit and appreciated very much the suggestions and advice she gave. We feel that, with the aid of our strong freshman class, we can live up to the resolutions we made for the college year.

FRANCES B. ROSS.

WORKING FOR SCHOLARSHIP CUP

Gamma Beta, University of New Mexico

After a closed season of four long weeks "bid day" at last rolled around at the University of New Mexico, and Gamma Beta announces the pledging of seven girls. These pledges are: Belle Barton, Helen MacArthur, Irene Fee, and Louise Walraven, all of Albuquerque, N. M.; Edna Miller, Hagerman, N. M.; Frances Parker, Hollywood, Cal.; and Annie Lee Duncan of Westpoint, Miss. These seven pledges, with Evelyn Hunt and Joy Spruce from last year, make nine in all, of whom we feel justly proud. We feel that each one of them will make a splendid Kappa.

Although Gamma Beta's active chapter is small this year, we do not intend to let scarcity of members interfere with hard work. We hope to win the much-sought-after scholarship cup and are working eagerly toward this end. The cup is offered by the Woman's Panhellenic Association. We are also slowly but surely saving our pennies for our house, the house we hope some day to own. As it is now we have a lovely chapter-room down town.

We have four very interesting Kappa weddings to announce: Edith Boellner of Roswell, New Mexico, to Carl Turner; "Jimmy" Standley to Arthur Gallup; Lois Davis to Ronald Scott; and Estelle Harris to Guy Rodgers. Estelle is the only one of the girls we have not altogether lost, as she lives here, and we are selfish enough to wish that all the others might have chosen Albuquerque as their home.

PROFITING BY IOTA PROVINCE CONVENTION

Beta Kappa, University of Idaho

Although another college year has just begun we all feel that it is merely a continuation of last year, due to the fact that we have sixteen of our

active members with us again. This is a great help because it permits us to work together more smoothly.

Beta Kappa was represented by Myrtle Gano, Mabel Sweeney, Lucie Davis, and Evadna Roberts at the Iota Province Conference held in Seattle, Washington, September 8-10. These girls brought back a great many new ideas and we are all living up to them to the best of our ability.

We were extremely successful this year in trying out the new system of pledging which was decided upon in conference. As a result we feel satisfied that the girls became much better acquainted with our members personally. I am sure that our new pledges are ones that will help Kappa in every possible way and we shall be proud to see them Kappas. They are: Margaret Blackinger, Boise; Irma Spielberg and Gladys Channel, Twin Falls; Grace Vogleson, Lewiston; Adeline Robbins, Glatha Hatfield, and Sara Duggan, Moscow; Ruth Easley, Chadron, Neb.; Gladys Hastie, Seattle, Wash.

On October 11 we gave a delightful dancing party in honor of our pledges. The hall was very prettily decorated in our colors, blue and blue. During the evening we gave a "Pledge Special" and each was presented with a corsage bouquet of pink Orphelia roses, and blue and blue larkspur.

The honors held by this chapter for this semester are those of president of Panhellenic, Myrtle Gano; Y. W. C. A. cabinet, Virginia McRae; secretary of junior class, Lar Vern Borell; secretary of sophomore class and member of University String Quartet, Agnes Sweeney; executive board of Women's League and junior member of Panhellenic, Lucie Davis; reporter for our weekly paper, Gladys Hastie.

We feel that the year before us will be a very successful one for all Kappa chapters.

GLADYS MAC RAE.

600 FRESHMEN AT OREGON

Beta Omega, University of Oregon

Beta Omega wishes to introduce to the Kappa sisters her new pledges, every one of whom is a girl of striking prsonality. These girls are Gayle Acton, Ellen Gantenbein, Aureita Payson, Mauna Loa Fallis, Dorothy Jameson, Dorothy McKee, Louise Irving, Margaret Duniway, and Marian Weiss of Portland; Jeannette Crosfield and Audrey Medler of Wasco; Ruth Austin of Woodburn; and Flora Campbell and Dorothy Millar of Eugene.

The university is beginning one of the greatest years in its history, and everyone entering seems to have a greater vision than ever before. The number enrolled has grown from 1,100 to 1,600, and of this number there are 600 freshmen. Beta Omega has two girls back this year who have been out for a year and these girls, Gladys Smith of Redmond and Fern Murphy of Medford, together with several girls who plan to return for the winter term, will help to keep up a good percentage of upperclassmen.

Our alumnae who graduated last year are scattered over the state, for the greater part of them are teaching school. Dorothy Flegal is teaching in the Pendleton High School, Helen Anderson is in Bend teaching in the high school, and Kathryn Hartley is engaged in the same work in Klatskanie.

The summer was most delightful to the girls who live in Portland for every Monday they met at luncheon and heard all the little bits of talk so dear to every girl's heart. It was a great help, too, for it really kept the girls in much closer touch with each other. The active girls with the assistance of the alumnae gave a most successful tea at the Barnes Studio at which the sum of \$100 was raised for the Woman's Building of the University of Oregon.

We had four delegates at the Iota Province convention which was held in Seattle and we are indeed most enthusiastic for the next one. It was of the greatest help to meet and discuss so many important problems which have come up from time to time with girls who had met with exactly the same situations and had successfully solved them. We sent as our representatives Dorothy Duniway, Mildred Apperson, Hazel Young, and Doris Pittenger.

We wish all Kappas a most successful year whether they are in college or not, for with normal times once more at hand a splendid future seems to be before us.

ELEANOR E. SPALL.

The following chapter letters were received too late to be printed:

Iota—letter received November 15.

Gamma Gamma—November 16.

Eta—November 21.

Upsilon—November 21.

Gamma Epsilon—November 24.

Beta Chi—December 1.

Beta Phi—November 29.

DIRECTORY OF MEETINGS

CHAPTERS

Any member of Kappa Kappa Gamma is cordially invited to attend meetings of the active chapters.

PHI

meets Friday afternoons at 5:30 at the chapter rooms, 491 Huntington Ave., Suite 5, Boston, Mass.

BETA SIGMA

meets every Wednesday afternoon at the College House, 68 St. James Place, Brooklyn, N. Y. Supper meetings first and third Wednesdays. We are glad to welcome any Kappas who are in Brooklyn or New York.

BETA ALPHA

meets every Monday, 7 P. M. at the chapter rooms, 3433 Walnut Street, Philadelphia, Pa.

BETA IOTA

meets at seven-thirty on Wednesday evenings in a room set aside as a chapter room, in the girls' dormitories, Swarthmore, Pennsylvania.

PSI

meets at the Kappa Kappa Gamma House, Overlook Road, Cayuga Heights, Ithaca, New York, every Saturday evening at 7:30.

BETA TAU

meets every Friday evening at seven-thirty o'clock in the chapter house at 907 Walnut Avenue, Syracuse, New York.

BETA PSI

meets every second Saturday at eight o'clock at the homes of the girls in the city. Definite information may be had by telephoning Miss Helen Scott, Hillcrest 227.

GAMMA RHO

meets every Saturday night at eight o'clock in the chapter rooms on the fourth floor of Hulings Hall, Meadville, Pennsylvania.

BETA UPSILON

meets every Tuesday evening, at 7 P. M. at the chapter house, 120 High Street, Morgantown, West Virginia.

LAMBDA

meets every Wednesday afternoon at four, on the third floor of Curtice Cottage, campus of Akron University.

BETA NU

meets at the homes of the different members in Columbus, Ohio, every other Saturday evening at five-thirty. Marguerite Heiner, 47 S. Champion Avenue, will give definite information concerning meetings. Telephone—Citizen 2631.

BETA RHO

meets every other Saturday afternoon, at the homes of the girls.

IOTA

meets every Saturday evening at the chapter house on Washington and Locust Streets.

MU

will hold meetings at two o'clock on Tuesday afternoons at the homes of the Irvington girls. By calling Irv. 352—(old Phone), the place may be learned.

DELTA

meets every Monday evening at the chapter house in Forest Place, Bloomington, Indiana.

BETA CHI

meets on Thursday afternoon at four o'clock at the fraternity house on Maxwell Street, Lexington, Kentucky.

BETA DELTA

meets in the chapter house, on the corner of Church Street, 1204 Hill Street, Ann Arbor, Michigan.

XI

meets at half after seven o'clock on Saturday evenings, in the chapter rooms, in South Hall, Adrian College, Adrian, Michigan.

KAPPA

meets every Friday at 4 P. M. at the chapter house, 328 West Street, Hillsdale, Mich. Communicate with Lucille Stoddard at chapter house, telephone 157.

CHI

meets every Monday at 5:15 P. M. at 329 10th Ave., Minneapolis, Minn.

ETA

meets every Monday evening at seven P. M., at the chapter house, 425 Park Street, Madison, Wisconsin.

UPSILON

meets on Monday at 5 P. M., Willard Hall, Evanston.

EPSILON

meets on Monday afternoons at four-thirty in the Kappa Hall in the main building of the university.

BETA LAMBDA

meets every Monday evening in the chapter house, 502 Chalmers Avenue, Champaign, Illinois.

BETA ZETA

meets at 226 S. Johnson Street every Monday at 7 P. M.

THETA

meets Monday evening at seven at the chapter house, 600 Rollins Street, Columbia, Missouri.

OMEGA

meets every Monday evening at seven o'clock at the chapter house, 1602 Louisiana Street, Lawrence, Kansas.

GAMMA ALPHA

meets every Wednesday at 7 P. M. at the chapter house, 1408 Laramie, Manhattan, Kan.

SIGMA

meets on Monday evening at seven-fifteen o'clock at the fraternity house, 312 N. 14th Street, Lincoln, Nebraska.

BETA MU

meets in the Kappa house, 1221 University Avenue, Boulder, Colorado, at seven on Monday evenings during the college year.

BETA THETA

meets every Monday evening at seven-thirty at the Kappa House, 535 University Boulevard, Norman, Oklahoma.

BETA XI

meets Wednesday evenings at seven-fifteen in the chapter house, 707 W. 24th St.

BETA OMICRON

meets every Monday afternoon at four o'clock.

BETA PHI

meets every Monday evening at eight o'clock at the chapter house, 330 Connell Ave., Missoula, Montana.

BETA PI

meets every Monday from four to six, at the chapter house, 4504 18th Avenue, North East, Seattle, Washington.

BETA OMEGA

meets every Monday evening at seven o'clock in the chapter house.

BETA KAPPA

meets every Tuesday evening at seven at the chapter house, 805 Elm Street, Moscow, Idaho.

PI

meets every Monday evening, at seven-thirty, in the chapter room of the Kappa house, 2725 Channing Way.

BETA ETA

meets every Monday evening at seven-ten in the chapter room.

GAMMA BETA

meets at the Kappa Kappa Gamma House, University Heights, Albuquerque, New Mexico, every Monday evening at 7:30 o'clock.

ASSOCIATIONS

AUSTIN ASSOCIATION

For dates and places of meeting, address Miss Sue K. Campbell, 2208 Antonia St., Austin, Tex.

BETA ETA ASSOCIATION

Meets four times a year at the homes of members. For dates and places of meeting, address Mrs. F. Gloucester Willis, 2550 Gough St., San Francisco, Cal.

BETA IOTA ASSOCIATION

Meets in January, March, May, and October on the second Saturday in the month. Address Mrs. Watson Magill, Oak Lane, Philadelphia, Pa.

BLOOMINGTON, ILLINOIS, ASSOCIATION

Meets at the homes of members. For places and dates of meetings, address Mrs. Louis Kuhn, 1305 S. Fell Ave., Normal, Ill.

BLOOMINGTON, INDIANA, ASSOCIATION

Meets each month at the homes of members. For dates and places, address Mrs. Ethel Smith Hobbs, Bloomington, Ind.

BOSTON ASSOCIATION

Meets the first Saturday of each month. For places of meeting, address Miss Virginia T. Taylor, 1 Oakdale Ave., Dedham, Mass.

CEDAR RAPIDS ASSOCIATION

Meets once a month at the homes of members. For places and dates, address Mrs. Clyde Stephens, 1751 A Ave., Cedar Rapids, Iowa.

CHAMPAIGN-URBANA ASSOCIATION

Meets four times in the school year at private homes. For places and dates address Mrs. L. R. Hubbard, 1506 W. Park Ave., Champaign, Ill.

CHICAGO ASSOCIATION

Meets the second Saturday of each month for luncheon. For dates and places, address Mrs. Dwight P. Green, 914 E. 53rd St., Chicago, Ill.

CINCINNATI ASSOCIATION

Meets the first Saturday of each month. For places of meeting, address Miss Ruth Guhman, 240 Hosea Ave., Cincinnati, Ohio.

CLEVELAND ASSOCIATION

Meets the second Saturday of the month at the homes of the members. For places of meeting, address Mrs. E. V. Ward, 2026 Cornell Road, Cleveland, Ohio.

COLUMBUS ASSOCIATION

Meets the first Saturday of each month at the homes of members. For places of meeting, address Miss Gertrude Hatfield, 539 E. Rich St., Columbus, Ohio.

DALLAS ASSOCIATION

Meets the first Saturday in each month at the Oriental Hotel. For further information, address Mrs. Sawnee R. Aldridge, 3526 Cedar Springs Road, Dallas, Tex.

DENVER ASSOCIATION

Meets the last Saturday in each month at the homes of members. For places, address Miss Elfrida Van Meter, 1326 Columbine St., Denver Colo.

DETROIT ASSOCIATION

Meets the second Saturday in each month from September to June. For places, address Miss Maude Munro, Cass Technical High School, Detroit, Mich.

FALLS CITIES ASSOCIATION

Meets in September, January, and May at members' homes, November and March at Vienna Restaurant. For exact dates, address Miss Clara I. Eaken, 229 E. Maple St., Jeffersonville, Ind.

FRANKLIN NU ASSOCIATION

For dates and places of meeting address Mrs. F. W. Erther, 846 W. 30th St., Indianapolis, Ind.

HOUSTON ASSOCIATION

For dates and places of meeting, address Mrs. Fred Parker, St. James Apt., Houston, Texas.

INDIANAPOLIS ASSOCIATION

Meets the third Friday of each month. For places of meeting, address Mrs. Theodore Vonnegut, 1221 Park Ave., Indianapolis, Ind.

KANSAS CITY ASSOCIATION

Meets the first Saturday of each month. For places of meeting, address Mrs. A. J. Thompson, 3832 Warwick Blvd., Kansas City, Mo.

LAWRENCE ASSOCIATION

Meets the second Friday of each month at homes of members. For places of meeting address Miss Alice M. Guenther, 641 Ohio St., Lawrence, Kan.

LINCOLN ASSOCIATION

For dates and places of meetings, address Mrs. Samuel C. Waugh, 2501 Bradfield Drive, Lincoln, Neb.

LOS ANGELES ASSOCIATION

Meets the third Saturdays of each month from October to June, at the homes of the members. For places, address Miss Lois Collins, 1401 Manhattan Pl., Los Angeles, Cal.

MILWAUKEE ASSOCIATION

Meets the third Saturday of each month. For places of meeting, address Miss Amy Allen, 126 19th St., Milwaukee, Wis.

MONTANA ASSOCIATION

Meets alternate Monday nights at the homes of members. For places and dates, address Miss Mary Elrod, 205 S. 5th St. E., Missoula, Mont.

MORGANTOWN ASSOCIATION

Meets the first Tuesday in each month at the homes of members. For places of meeting, address Mrs. C. Edmund Neil, 239 Spruce St., Morgantown, W. Va.

MUNCIE ASSOCIATION

Meets each month at the homes of members. For dates and places of meeting, address Mrs. H. H. Orr, 112 S. Monroe St., Muncie, Ind.

NEW YORK ASSOCIATION

For dates and places of meeting, address Mrs. Guy S. Walker, 924 West End Ave., New York, N. Y.

NORTH SHORE ASSOCIATION

Meets the first Wednesday in each month at the homes of members for luncheon. For places of meeting, address Miss Kathryn Goss, 905 Forest Ave., Evanston, Ill.

OKLAHOMA ASSOCIATION

Four times during the year at the Skirvin Hotel, Oklahoma City, Okla. For dates, address Miss Iris Baughman, 730 E. 9th St., Oklahoma City, Okla.

PALESTINE ASSOCIATION

Meets first Saturday in each month, Redlands Hotel, Palestine, Tex. Address Mrs. Webb Wright, 310 E. Kolstad St., Palestine, Tex.

PHILADELPHIA ASSOCIATION

Meets at homes of members, alternating second Tuesday and second Saturday of months from September to June. Address Miss Mildred Goshaw, 428 Conarroe St., Roxborough, Pa.

PI ALUMNÆ ASSOCIATION

Meets every two months at homes of members and at Kappa House. For further information, address Mrs. H. W. Tomlinson, 588 Jean St., Oakland, Cal.

PITTSBURGH ASSOCIATION

Meets bi-monthly at the homes of members. Address Mrs. A. G. Crawshaw, 201 East End Ave., Pittsburgh, Pa.

PORTLAND ASSOCIATION

Meets first Saturday of each month at the homes of members. For further information, address Mrs. T. G. Williams, 962 E. Ninth St., Portland, Ore.

ST. LOUIS ASSOCIATION

First week in each month, except July and August, at homes of members. For places and dates of meeting address Miss Florence R. Knapp, 410 Arundel Pl., St. Louis, Mo.

SOUTH BEND ASSOCIATION

Meets at homes of members, the third Monday of October, December, March, and May. For places of meeting, address Mrs. Elizabeth G. Seebirt, 634 N. Lafayette Blvd., South Bend, Ind.

SYRACUSE ASSOCIATION

Meets once a month at the homes of members, or at the chapter house. For dates and places of meeting, address Miss Adelaide Simonds, 6254 Westcott St., Syracuse, N. Y.

WALLA WALLA ASSOCIATION

Meets once a month. Address Miss Henrietta Baker, 2nd and Alder Sts., Walla Walla, Wash.

WASHINGTON ASSOCIATION

Meets the first Saturday of every month at the homes of the members. For places of meeting, address Miss Celia D. Shelton, 2904 Franklin Ave., Seattle, Wash.

WESTERN NEW YORK ASSOCIATION

Meets third Saturday of each month at homes of members. For dates and places, address Mrs. Byron A. Johnson, 511 Woodbine Ave., Rochester, N. Y.

CLUBS**ADRIAN CLUB**

Meets once a month at the homes of the members. For places and dates, address Mrs. Florence Worden, 141½ W. Maumee St., Adrian, Mich.

BETA GAMMA CLUB

For information, address Miss Florence McClure, Larwell St., Wooster, Ohio.

BETA SIGMA CLUB

Meets the third Wednesday of every month. For information, address Mrs. Ella D. Romig, 145 West 12th Street, New York, N. Y.

GAMMA ALPHA CLUB

For information as to places and dates of meetings, address Miss Hazel Groff, Nortonville, Kan.

IOTA CLUB

For place and date of meetings, address Mrs. Helen O. Sigmund, Crawfordsville, Ind.

IOWA CITY CLUB

For information address Mrs. Annette Cannon, Iowa City, Iowa.

LAMBDA CLUB

Meets for luncheon the first Saturday of each month at one o'clock at the Portage Hotel. Address Miss Ruth Harter, 544 Market St., Akron, Ohio.

MINNESOTA CLUB

Meets the third Friday of each month. For places of meeting, address Mrs. Edwin Brown, 1929 Fremont Ave., Minneapolis, Minn.

MU CLUB

Address Miss Elsie Felt, 64 N. Irvington Ave., Indianapolis, Ind.

NEWCOMB CLUB

For places and dates of meetings, address Mrs. John Pratt, 1230 State St., New Orleans, La.

OMAHA CLUB

Meets the first Saturday of every month at the homes of the members.
Address Miss Mary Alice Duval, 4912 Underwood Ave., Dundee, Omaha,
Neb.

TOPEKA CLUB

For places and dates of meetings, address Mrs. Frank D. Nuss, 1621 Clay
St., Topeka, Kan.

TRI CITY CLUB

For information, address Miss Ethel McKown, 2425 Brady St., Daven-
port, Iowa.



ESTABLISHED IN 1876

J·F·NEWMAN

Official Fraternity Jewelers

Manufacturers -:- Importers -:- Designers

of

Fraternity Badges
Fraternity Jewelry for Men
Fraternity Jewelry for Women
Army and Navy Jewelry
Diamond Engagement Rings
Chapter Wedding Gifts
Medals and Trophies
Gold Foot Balls, Base Balls, Etc.
Society Pins, Rings, Keys
Classpins and Rings
Silver and Bronze Memorials

Originators of the Chapter Roll of Honor
in solid metal, showing names of members
in service. In use by Chapters, Clubs,
Lodges, Banks and Business Houses.

Please send catalogues on subjects checked on
above list of productions.

Name..... Fraternity.....

Address

(Tear out page and mail to nearest office)

NEW YORK
11 John Street

KANSAS CITY
105 E. 11th Street

SAN FRANCISCO
150 Post Street

CHICAGO
31 N. State St.

LIFE SUBSCRIPTION!!

\$15.00!!

This amount may be paid all at once,

or

\$5.00 now and the balance in two consecutive
yearly payments of \$5.00 each,

or

\$5.00 now and the balance in one payment of
\$10.00 before the end of fifth year from date of
first payment.

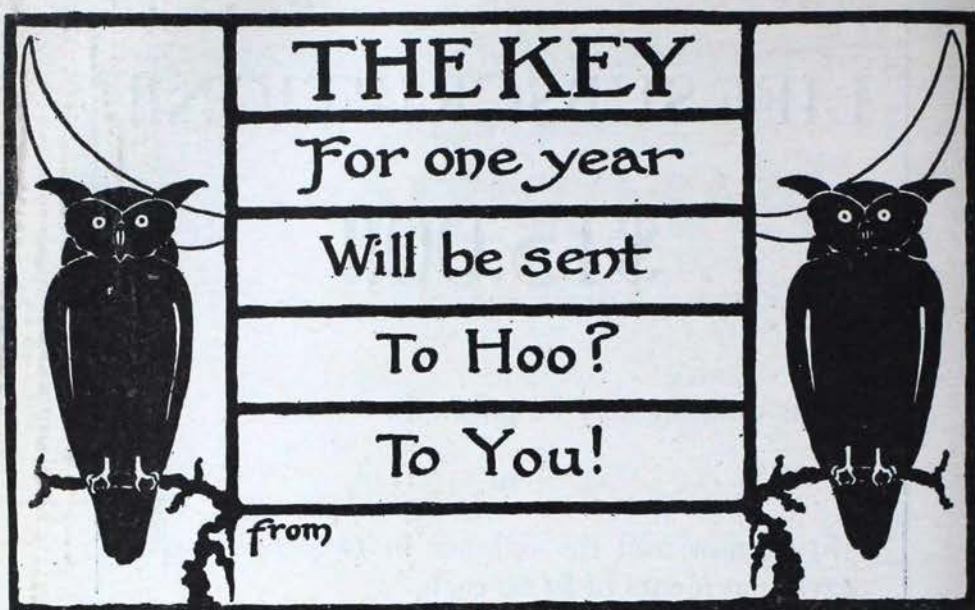
TAKE YOUR CHOICE
AND
TAKE A LIFE SUBSCRIPTION!!

Send to Business Manager

Elisabeth H. Bartlett

1922 Mt. Royal Terrace

Baltimore, Md.



Remember your Kappa Friends

with a subscription to

THE KEY!

And on the correct date make your gift even more attractive by sending an autographed gift card, like the above, to the one to whom the subscription is to be given.

These cards with envelopes to match may be had for 5 cents each from the Business Manager,

ELISABETH H. BARTLETT

1922 Mt. Royal Terrace

BALTIMORE, MD.

1870

1920

FIFTY YEARS AGO

The D. L. AULD CO.

*Official Jewelers to Kappa Kappa Gamma
by appointment*

COLUMBUS, OHIO

began the manufacture of Fraternity jewelry. Today AULD badges are naturally recognized as STANDARD by all fraternities.

There is a BEST in every line—AULD goods are made to give complete satisfaction, not merely to sell. That is why it is better to buy an AULD badge than to wish you had.

Write for your copy of 1920 BLUE BOOK and illustrated badge price list.

San Francisco Office
150 Post St.
W. A. Shaw, Mgr.

Chicago Office
64 W. Randolph St.
E. M. Mercier, Mgr.



THE IDENTIFICATION and RECOGNITION RING for MODERN GREEKS in the SERVICE of UNCLE SAM

This ring has become without doubt the most universally used piece of fraternity jewelry ever produced, and it is a necessary part of every fraternity man's equipment on his entering the service. It makes an excellent gift for him, and the new size makes it possible to give duplicates of the standard size ring to the "Sisters" of the men in the service.

The most popular ring is the one worn on the little finger, for if worn in this manner practically all of the ring is visible. It is also made without the cut-in-shank, with the eagle on both shanks, and made in this manner can be worn either on the little finger or on the third finger.

MILITARY IDENTIFICATION RING

	Standard Size	Sister Size
Sterling Silver	\$ 5.00	\$ 4.00
Solid Gold	17.50	10.00

MILITARY IDENTIFICATION RING

Eagles on Both Shanks

Sterling Silver	\$ 5.00	\$ 4.00
Solid Gold	25.00	12.50

Official Jeweler to Kappa Kappa Gamma

BURR, PATTERSON and COMPANY

Detroit, Mich.

WKC

1861

WRIGHT, KAY & CO

DETROIT

OFFICIAL JEWELERS TO KAPPA KAPPA GAMMA

Efficient and immediate reply
to inquiries assured

FACTORY AND OFFICES:
207-209-211 Woodward Avenue

1861

WKC



BOOK-PLATES: 25c for package of 25

COVERS FOR BANQUET MENUS: \$1 a dozen. Coat-of-arms in gold or silver.

DANCE PROGRAMS: coat-of-arms in gold on gilt edged card, 75c a dozen.

ENGRAVED ANNOUNCEMENTS: for banquet or initiation, \$3.50 a hundred. With envelopes. Space for chapter name, date.

KAPPA MEMORY BOOKS: \$1.25 each.

LETTER PAPER: blue or white; solid or filigree arms, 95c a quire, postage 10c.

NOTE PAPER: gray, blue or white; filigree arms, fleur-de-lis die or wording die. 85c a quire, postage 10c.

OFFICIAL PAPER: 8½ by 11, 250 sheets \$6, 500 sheets \$7.50, postpaid. Send die. Crane's 20-lb. folio Japanese linen quoted.

Address Cleora Wheeler, 1376 Summit Avenue, St. Paul, Minnesota

Kappas!

*Please look over your
old Keys*

Immediately after the opening of college and if your files are not complete and you want to order any back numbers please do so at once.

There are still a few copies on hand.

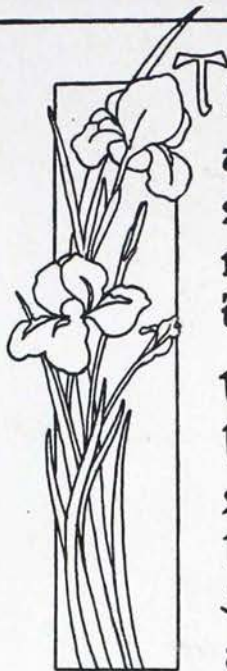
*Do it now and send your order with 25 cents for each back issue to the **Business Manager**.*

Orders for back issues received after January 1st, 1920, will be 50 cents.

Single copies of directory are 50 cents.

ELISABETH H. BARTLETT

1922 Mt. Royal Terrace, Baltimore, Md.



Thou Kappa Kappa Gamma live each day in
all our hearts. And in our lives play many noble
sympathetic parts. The parts of sister, second
mother, counsellor, true friend. Of Love's
ideal to which we raise our eyes until the end

Until the end? I think when passed beyond this
little sphere. We still shall see thy joyous
shining light forever clear. And hear in all
the skies thy call of perfect Womanhood
So God may say "On earth and here thou
art a lasting Good"

Ella Wallace Wells

This Symphony (suitable size for framing, 9x14 inches), illuminated by hand in watercolors, may be procured for 75 cents; in black and white, ready for illumination, for 25 cents. All money thus received will go to Students' Aid Fund. Address
MRS. W. L. WALLACE, 718 S. Crouse Ave., Syracuse, N. Y.

The Hoover & Smith Co.

616 Chestnut Street
PHILADELPHIA

DIAMOND MERCHANTS

Jewelers and Silversmiths

Kappa Kappa Gamma's Official Jeweler

SPECIALISTS IN

Fraternity Badges
Fobs, Novelties
Rings, Charms

Prizes
Medals
Trophies

College Pins
Fobs, Seals
Rings, Charms

Shreve Company

Jewelers, Silversmiths,
Fine Stationers

OFFICIAL JEWELERS

TO

Kappa Kappa Gamma

Shipments
to any point in the
United States
without additional charge

Shreve Building

POST STREET AT GRANT AVENUE

San Francisco

