

# The Key

---

Kappa Kappa  
Gamma



Vol. xxiii. January, 1906. No. 1.





# The Key

## Official Organ of Kappa Kappa Gamma

---

Volume XXIII

January, 1906

---

Number 1

Published Quarterly by the Fraternity  
at 56 Broad Street, New York City.  
Subscription Price, \$1.00 per year.

---

### Board of Editors

Editor-in-Chief—Elizabeth Voris, - - 77 Fir Street, Akron, Ohio.  
Exchange Editor—Mrs. Marion T. Smith,  
Flat I., 6011 Ellis Avenue, Chicago, Ill.  
Alumnae Editor—Mrs. Guy Walker, 504 W. 112th Street, New York.



## Contents

WOMAN'S HALL AT THE UNIVERSITY OF ILLINOIS, <i>Charlotte Gibbs, Beta</i>	
<i>Lambda</i> .....	1
PRESIDENT JAMES'S ADDRESS AT THE DEDICATION OF WOMAN'S HALL.....	2
THE GRAND COUNCIL SESSION, <i>Mary Dechert Griffith</i> .....	3
A POEM, by <i>Julia Ward Howe</i> .....	5
PARTHENON—	
An Attempt at the Solution of the Rushing Problem, <i>Juliet Stuart Points,</i> <i>Points, ePta Epsilon</i> .....	7
The Necessity of an Aim in College, <i>M. Louise Dyer, Phi</i> .....	9
Our Duty as College Women, <i>Ella H. Bradley, Upsilon</i> .....	10
Serving the College, <i>Juliette G. Hollenback, Beta Sigma</i> .....	10
What Constitutes True Fraternity Loyalty? <i>Ethel Gurney, Kappa, '03</i> ..	11
Fraternity Honor, <i>Marcia O. Dunham, Beta Zeta</i> .....	13
Division of Labor in the Chapter, <i>Mary M. Jarvis, Beta Xi</i> .....	13
The Need of a Crest, <i>F. Elvira Wallis, Eta</i> .....	14
A Poem, Sigma in Delta, <i>Nell Malloy, Beta Nu</i> .....	15
EDITORIAL .....	16
CHAPTER LETTERS .....	19
OBITUARY .....	45
ALUMNAE ASSOCIATION LETTERS .....	46
ALUMNAE PERSONALS .....	50
EXCHANGES .....	55
CONVENTIONS .....	59
INDEX TO VOLUME XXII.....	60



# Fraternity Directory.

## Grand Council.

Grand President—Mrs. Herbert S. Mallory, 1019 Park St., Grinnell, Iowa.  
Grand Secretary—Mary Dechert Griffith, 1529 Green St., Philadelphia, Pa.  
Grand Treasurer—George Challoner, 456 New York Ave., Oshkosh, Wis.  
Grand Registrar—Cleora Clark Wheeler, 520 Summit Ave., St. Paul, Minn.  
Editor of Key—Elizabeth Voris, 77 Fir St., Akron, Ohio.

## Deputies.

Grand President's Deputy—Gladys Whitley, 728 First St., Webster City, Ia.  
Grand Secretary's Deputy—Margaret Craig, 3338 N. 15th St., Philadelphia, Pa.  
Grand Treasurer's Deputy—Agnes Walsh, 3320 Galena St., Milwaukee, Wis.  
Grand Registrar's Deputy—Marion Morrow,

1907 Telegraph Ave., Oakland, Cal.  
Editor's Deputy—Clara Brouse, 493 E. Market St., Akron, O.  
Historian—Elizabeth Gray, 758 Tenth St., Oakland, Cal.  
Director of Catalog—Mary R. Scattergood,

471 N. Marshall St., Philadelphia, Pa.  
Alumnae Officer—Virginia Sinclair, 249 Kipling St., Palo Alto, Cal.

## Standing Committees.

Sinking Fund Committee—Mary E. Pennington, Chairman,  
3914 Walnut St., Philadelphia, Pa.

Wood's Hall and Scholarship Committee—Mrs. Guy Walker, Chairman,  
504 W. 112th St., New York City.

Alumnae Committee—Mrs. Beck, Chairman,  
327 S. College Ave., Bloomington, Ind.

## Alumnae Associations.

Boston Association—Miss Ethel H. Sparrow,  
27 Meacham Road, West Somerville, Mass.

New York Association—Mrs. Sidney A. Saunders,  
511 W. 122d St., New York City.

Beta Iota Association—Miss Lucretia S. Blankenburg,  
214 West Logan Square, Philadelphia, Pa.

Syracuse Association—Mrs. Anna H. Whittic,  
311 Almond St., Syracuse, N. Y.

Philadelphia Association—Miss Helen M. Euston,  
The Tracy, Philadelphia, Pa.

Meadville Association—Miss Mary Heydrick, 496 Pine St., Meadville, Pa.

Pittsburg Association—Mrs. C. E. Wilbur, 47 Dawson Ave., Bellevue, Pa.

Columbus Association—Mrs. C. C. Corner, 642 E. Rich St., Columbus, O.

Cleveland Association—Mrs. Bertram Stevenson,  
18 Princeton St., Cleveland, O.

Akron Association—Mrs. H. F. Siegrist, 191 S. College St., Akron, O.

Wooster Association—Miss Florence E. McClure,  
155 W. Liberty St., Wooster, O.

Adrian Association—Miss Anna M. Owens, 26 W. Church St., Adrian, Mich.

Bloomington (Ind.) Association—Mrs. L. V. Buskirk,  
321 N. Walnut St., Bloomington, Ind.

Indianapolis Association—Miss Inez Elliott,  
1566 East Market St., Indianapolis, Ind.

Greencastle Association—Miss Hallie Landes,  
302 N. College Ave., Greencastle, Ind.

Iota Association—Miss Marion Wood, 429 W. Charles St., Muncie, Ind.

Bloomington (Ill.) Association—Miss Elizabeth McClure,  
1202 N. East St., Bloomington, Ill.

Chicago Association—Mrs. D. D. Otstott, 606 W. 67th St., Chicago, Ill.

Madison Association—Miss Juliet Thorp, 427 N. Butler St., Madison, Wis.

Iowa City Association—Miss Helen N. Currier,  
32 Bloomington St., Iowa City, Ia.

St. Louis Association—Mrs. Herbert S. Morris,  
5634 Bartmer Ave., St. Louis, Mo.

Minnesota Association—Mrs. Jesse W. Shuman,  
8 E. 14th St., Minneapolis, Minn.

Lincoln Association—Miss Mabel Hays,  
University of Nebraska, Lincoln, Neb.

Kansas City Association—Mrs. Wm. McLaughlin,  
2905 Independence Boulevard, Kansas City, Mo.

Denver Association—Miss Blanche Emmons,  
202 E. Ellsworth St., Denver, Col.

Pi Association—Miss Elsa Lichtenberg, San Rafael, Marin Co., Cal.

Washington State Association—Miss Julia Conway,



## Corresponding Secretaries.

### Alpha Province.

- Phi, Boston University, Boston, Mass.—M. Louise Dyer,  
2 Somerset St., Boston, Mass.  
Beta Epsilon, Barnard College, New York City—Marjorie F. Brown,  
501 West 120th St., New York, N. Y.  
Beta Sigma, Adelphi College, Brooklyn, N. Y.—Juliette G. Hollenback,  
460 Washington Ave., Brooklyn, N. Y.  
Psi, Cornell University, Ithaca, N. Y.—Amy T. Rhodes,  
Sage Hall, Ithaca, N. Y.  
Beta Tau, Syracuse University, Syracuse, N. Y.—Ida Louisa Allis,  
718 Irving Ave., Syracuse, N. Y.  
Beta Alpha, University of Pennsylvania, Philadelphia.—Sally Mark Barclay,  
Box 69, Ridley Park, Pa.  
Beta Iota, Swarthmore College, Swarthmore, Pa.—Elizabeth L. Verlenden,  
Swarthmore College, Swarthmore, Pa.  
Gamma Rho, Allegheny College, Meadville, Pa.—Carrie L. Sowash,  
Hulings Hall, Meadville, Pa.

### Beta Province.

- Lambda, Buchtel College, Akron, O.—Mabel Wilcox, Cuyahoga Falls, O.  
Beta Gamma, Wooster University, Wooster, O.—Catherine S. Vance,  
43 College Ave., Wooster, O.  
Beta Nu, Ohio State University, Columbus, O.—Lillian E. Pope,  
142 N. Monroe Ave., Columbus, O.  
Beta Delta, University of Michigan, Ann Arbor, Mich.—Persis L. Martin,  
514 Jefferson St., Ann Arbor, Mich.  
Xi, Adrian College, Adrian, Mich.—Mabelle C. Young,  
6 Broad St., Adrian, Mich.  
Kappa, Hillsdale College, Hillsdale, Mich.—Della McIntosh,  
East Hall, Hillsdale, Mich.

### Gamma Province.

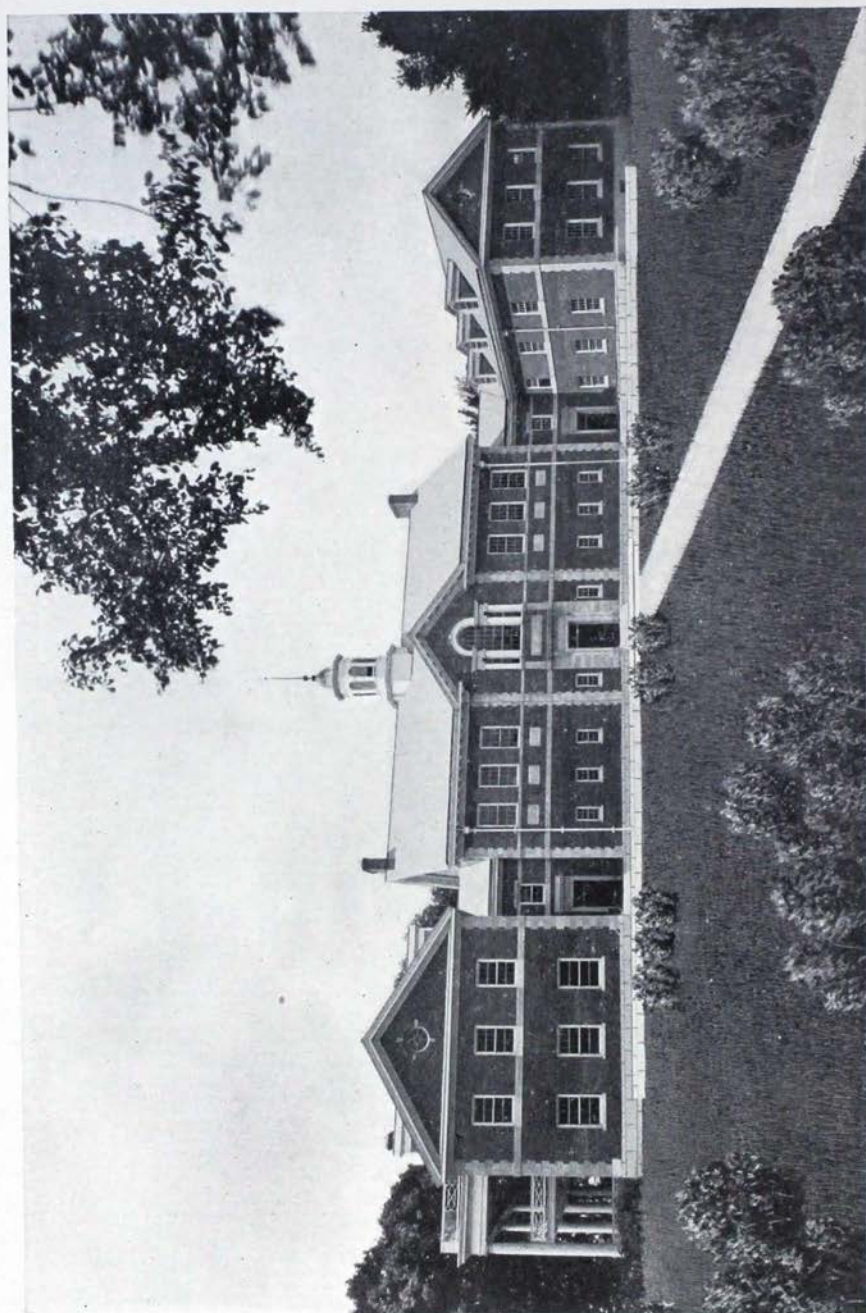
- Delta, Indiana State University, Bloomington, Ind.—Ethel Simmons,  
717 N. College Ave., Bloomington, Ind.  
Iota, De Pauw University, Greencastle, Ind.—Lalah R. Randle,  
Kappa House, Greencastle, Ind.  
Mu, Butler College, Indianapolis, Ind.—Susanne Davis,  
Butler College, Irvington, Ind.  
Eta, University of Wisconsin, Madison, Wis.—Maude M. Monroe,  
425 Park St., Madison, Wis.  
Beta Lambda, University of Illinois, Champaign, Ill.—Louise Hanna,  
404 John St., Champaign, Ill.  
Upsilon, Northwestern University, Evanston, Ill.—Ella H. Bradley,  
1925 Orrington Ave., Evanston, Ill.  
Epsilon, Illinois Wesleyan University, Bloomington, Ill.—Everetta Roe,  
811 N. Evans St., Bloomington, Ill.

### Delta Province.

- Chi, University of Minnesota, Minneapolis, Minn.—Helen Hill,  
P. O. Box 34, University of Minnesota, Minneapolis, Minn.  
Beta Zeta, Iowa State University, Iowa City, Ia.—Elizabeth Sherwood,  
529 E. College, Iowa City, Ia.  
Theta, Missouri State University, Columbia, Mo.—Jack Withers,  
Kappa House, Columbia, Mo.  
Sigma, Nebraska State University, Lincoln, Neb.—Edith Butler,  
1436 G St., Lincoln, Neb.  
Omega, Kansas State University, Lawrence, Kan.—Addie F. Lauder,  
1400 Tennessee St., Lawrence, Kan.  
Beta Mu, Colorado State University, Boulder, Colo.—Rebecca Kesner,  
1227 University Ave., Boulder, Colo.  
Beta Xi, Texas State University, Austin, Tex.—Maie P. Borden,  
2010 Wichita St., Austin, Tex.  
Beta Omicron, Tulane University, New Orleans, La.—Mel Robertson,  
Newcomb College, New Orleans, La.  
Pi, University of California, Berkeley, Cal.—Mary R. Blossom,  
2600 Bancroft Way, Berkeley, Cal.  
Beta Eta, Leland Stanford, Jr., University, Cal.—Claudine Cotton,  
Stanford University, Cal.  
Beta Pi, University of Washington, Seattle, Wash.—Maude McMicken,  
Kappa Lodge, Seattle, Wash.







WOMAN'S HALL, UNIVERSITY OF ILLINOIS, URBANA, ILLINOIS.



# The Key

---

Vol. XXIII.

January, 1906.

No. I.

---

## Woman's Hall at the University of Illinois.

**W**ITH the very impressive dedication of the Woman's Hall on October 16, 1905, the women of the University of Illinois received a building unique, if not among all the colleges of the country, at least among state universities.

For many years some of the leading club women of the state, as well as the University authorities, have been working earnestly for a hall, around which the social life of the girls might center, and which they might feel to be entirely their own. At first it was thought that the need was for a dormitory, but it was finally decided that there should not be dormitories at Illinois, at least not for the present, and so in the spring of 1903 the Legislature voted \$50,000 for the building, which now stands completed.

Situated a little back from the main university campus in an imposing position, with the entrance to the east, it consists of a main structure with an ell at each end, the style of architecture being Georgian, the architects, the well-known firm of McKim, Mead & White. The central part contains, on the first floor, the offices of the director of the gymnasium, the baths, the swimming tank and the other requisites for a gymnasium, while the entire second floor is given over to the gymnasium proper, with a balcony at one end.

One ell, that nearest the main campus, was planned especially for the household science department, and with

## The Key

its three floors gives ample room for kitchens and laboratories. The other ell, with a broad two-story veranda toward the south, is given up to the social life of the girls. On the first floor there is a large lounging room, toilet room, and the office of the head of the Woman's Hall, who has the supervision of the social life of the girls. Three spacious club-rooms on the second, and several practice rooms on the third floor, together with the large halls and broad stairs, afford a great deal of room for the girls to spread around in. Great care has been taken that the furnishings of these rooms might be very beautiful and be a standard of good taste; the rugs, pictures and hangings artistic, and the whole as attractive as possible. In warm weather the porches are filled with comfortable chairs and swings, so that the girls may lounge to their hearts' content. Just beyond are the tennis courts and a long stretch of green, with no other building near.

Each part of the building has a separate entrance, and although the parts are united each is, in a way, alone. Here, in one building, are collected those branches of university life which are especially for the girls, and every one feels that here they have a great opportunity for broad development. The club-rooms are open to all the women's organizations, and as every girl has a perfect right to the privileges of the hall the faculty, as well as the donors, hope they will be much used

Charlotte Gibbs, *Beta Lambda*.



### President James' Address at the Dedication of Woman's Hall.

The following is quoted, in its entirety, from the Chicago Daily Tribune of October 17, 1905:

President James in accepting the building said in part:

"The erection and dedication of such a building as this signifies one or two important things for the life of the university. It means in the first place, that the University of Illinois is committed to the policy of co-education in the fullest and most complete sense of the term. It means that whatever other institutions may do in the way of



segregating the women in the process of education, or however they may limit their numbers, either absolutely or by per cental graduation, the University of Illinois will admit all women of this commonwealth who, being properly prepared for university work, desire the facilities of the institution.

"This building means, however, still another and a more important thing for the future of the college women of this state. It means that the state of Illinois and the people of Illinois are still in many respects old-fashioned. They believe their girls should be treated in a different and a better way than their boys, if a choice must be made in the treatment of the two. It means that the time has come when we finally are willing to face the proposition that the higher education of women is to be in many respects of a different type from the higher education of men."

After showing how women students had won the right to share with men the benefits of higher education, President James referred to the growth and limitations of the Sorority, saying:

"We have developed here at the University of Illinois to quite an astonishing extent the so-called sorority, or sisterhood, a semi-secret association of young women, limited in numbers, so that each member may really become an intimate friend and companion of every other. It has many advantages. It has been, under conditions prevailing here, almost a necessity. If its abuses can be abolished it will remain a permanent element of the great and beneficent influence in the life of the university. But all such organizations have one drawback which is involved in their very essence, namely: the limitation of association and the limitation of intercourse to the comparatively small number of people who have been selected by a more or less artificial process.

"It is believed that this social clubhouse, the privileges of which are open to every woman in the university, by virtue of the fact that she is a member of the university, will go far to supplementing the defects of the sorority system, and will give opportunity for women in the different sororities, and for the women in no sorority at all, to come together more intimately upon the common ground of university membership.

"So far as I know this is the first building of this sort to be erected at any American university. I cannot help but believe that the example of Illinois in this respect will be followed ere long by many others. I think the University of Illinois may congratulate itself upon the fact that, whereas the women's colleges almost without exception have refused to take up these courses, and provide for them in the same liberal way in which they provide for courses in Latin and Greek, in French and German, this institution has pointed the way not only to women's colleges, but to the co-educational institutions in general by which vast addition may be made to facilities of higher education for women."



## The Grand Council Session.

October 9.—The session was called to order by the Grand President at 3 o'clock in the afternoon. Scripture reading and a prayer by the Grand Registrar followed. All officers responded to the roll-call and we proceeded at once to the busi-

## The Key

ness on hand. The Grand President first of all appointed the following committees:

1. Finance—Grand Treasurer and Editor.
2. Fraternity Policy—Grand Secretary, Editor, Grand President.
3. Printing and Publication—Grand President and Editor.
4. Alumnae Work—Grand Treasurer and Editor.
5. Revision of Standing Rules—Grand Secretary, Grand Registrar and Grand President.
6. Convention—Grand Registrar and Grand Treasurer.
7. Resolutions—Grand Secretary.

Instructions were given to the Committees by the Grand President. The following reports were read and accepted:

Report of Director of Catalogue.  
 Report of Historian.  
 Report of Alumnae Officer.  
 Report of Chairman of Committee on Sinking Fund.

Session adjourned at 6 p. m. until October 10, at 9 a. m.  
 October 10.—Session was resumed at 9 a. m. The following reports were read and accepted:

Report on Progress of Social Service Work.  
 Report on Installation of Beta Pi.  
 Report on Installation of Beta Sigma.  
 Report on Inter-Sorority Conference and Pan-Hellenic Work.

Session adjourned at 12 m. until 1 p. m.

Session was resumed at 1 p. m. Report on Pan-Hellenic was concluded and discussed in detail. Report of Editor of Key (necessarily incomplete). Session adjourned at 5.30 p. m. until October 11, at 11 a. m.

October 11.—Session was resumed at 11 o'clock in the morning and this whole day was spent in chapter reports.

October 12.—Until 10 p. m. the council was busy with committee work, and then session was resumed and the reports of the committees were read.

October 13.—The session was resumed at 9 a. m., and the reports of the committees were concluded. After the unfinished business and new business, the session was adjourned while the council attended a banquet given by the Chicago Alumnae Association in honor of the thirty-fifth anniversary of the fraternity. After a most pleasant evening spent in this



way, the session was resumed and all business was concluded with the adoption of the following resolutions:

That the thanks of the Grand Council be extended to the Chicago Alumnae Association for the courtesy shown in tendering a reception and banquet on October 13.

That the thanks of the Grand Council be extended to Mrs. Otstott for her kindness before and during Council Session.

That the thanks of Grand Council be extended to Adele Lathrop for her splendid work upon the Key.

That the thanks of the Grand Council be extended to May Westerman for her work of tabulating the archives of the Historian.

On Saturday morning, October 14, the council met for the last time, at a breakfast given in their honor by Mrs. D. D. Otstott, president of the Chicago Alumnae Association. It was agreed by all that this was a most delightful way of ending the week of work and pleasure.



## Julia Ward Howe's Tribute to the late Mrs. Mary A. Livermore, her Lifelong Friend.

**O**N the eve of her eighty-sixth birthday, Mrs. Julia Ward Howe, one of the most remarkable women America has ever produced, wrote a poem commemorating the death of that other noted woman, Mrs. Mary A. Livermore, her lifelong friend.

It is a tribute, simple in its lines, but heartfelt in sentiment, and will stand as a bit of literature beside Mrs. Howe's immortal poem, "The Battle Hymn of the Republic," written at the close of the Civil War. It reflects still the tremendous genius which Mrs. Howe used to make the world listen to her message; as a production of its kind, it is probably without parallel in the world's history:"

BY JULIA WARD HOWE.

(Copyright, 1905, by American-Journal-Examiner.)

The darkening of a brow below'd,  
The silence of a voice of cheer.  
That roused, reminded and reproved  
For many a day, in many a year.

She stood beside the beds of pain  
Where fainting soldiers scarce drew breath;  
She won them back to life again,  
Or smiled away the pangs of death.

## The Key

When Duty bade the woman speak,  
How bravely did she heed the call!  
With presence resolute, yet meek,  
She graced the temple and the hall.

Three decades of laborious years,  
Their holiday, the light of home;  
Their record in the past appears,  
Their promise, in the days to come.

For every earnest word she spake  
Shall in Time's furrows ripen seed;  
The labor shall our world awake  
To take deep thought for human need.

We meet in sorrow at her grave,  
Right lovingly we say farewell;  
All richer for the life she gave,  
All poorer for its broken spell.





## Parthenon.

### **An Attempt at the Solution of the Rushing Problem.**

The regulation of fraternity rushing by the whole student body or its representatives is an unusual development even for colleges where there is no Pan-Hellenic Council, and even more unusual, I think, in a college like Barnard, where the fraternities have signed a Pan-Hellenic compact for several years.

In the year 1904-1905 our faculty placed almost the entire government of college affairs not purely academic in the hands of a special committee chosen from the student body. The committee consisted of the five officers of the Students' Association and the four class presidents, and was called the Student Council.

When the question of interfering with the fraternities came up, Student Council debated it for a long time. It was said that any such interference would be a dangerous precedent, that it would cripple the Pan-Hellenic Council, that the fraternities would be more apt to obey regulations to which they themselves had agreed than any which might be imposed upon them by outside forces, that the Student Council was composed of representatives of only four out of the seven fraternities. On the other side it was argued that fraternities as organizations connected fundamentally with the college would be obliged in honor and equity to obey college rules, that the usefulness of the Pan-Hellenic Council would not be impaired since it would form a nucleus on which could be placed the responsibility for the carrying out of any regulations imposed on the fraternities, that the members of the Student Council, although fraternity girls, were elected to represent the non-fraternity element in college as well as the fraternities. This last argument was really the crux of the whole affair. Since the non-fraternity students were more numerous, and the fraternities under the then existent conditions were conducted to the detriment of the non-

fraternity element, it necessarily followed that the members of Student Council should feel it incumbent on them to change those conditions in favor of the non-fraternity students.

The rushing conditions of the previous year, a pledge-day in December and rushing restricted to a weekly entertainment, had been agreeable to most of the fraternities represented on Student Council, and it was, therefore, without any personal motives that the Council took up the problem. Letters were solicited from twenty representative, non-fraternity girls concerning rushing in general and pledge-day in particular. Nineteen out of twenty answered to the effect that they considered every possible restriction on rushing desirable, and that a pledge-day at the end of the freshman year or the beginning of the sophomore year was best. Sins of omission would thus be more avoidable and the freshman would have a chance to make friends with her classmates without the intrusion of the fraternity exclusiveness.

The self-respecting non-fraternity girl is lonely, and the rushing of freshmen accentuates this loneliness. The spectacle of older and presumably more dignified upper classmen in a mad rush after comparatively insignificant freshmen is undignified and unworthy of college standards. Luncheons in the college lunchroom, at which ten or fifteen upper classmen may be seen violently and assiduously endeavoring to make two freshmen wish to join their fraternity, have an element of absurdity for the outside onlooker. Conditions should be arranged so that such spectacles would be unnecessary, so that the fraternity girl should be given time not to please the freshman but to see whether the freshmen please her. She could become acquainted with her future friends in a more natural and refined fashion. After all, two or three months ought not to be time enough in which to choose your friends for life. Absorption of the fraternity girl in her fraternity interests to the detriment of her college and class spirit in the excitement of rushing, would, by a late pledge-day, be made less obvious and less complete by making the demand for new members less imminent.

From these various considerations the Student Council, with the support of the faculty, and against the wishes of



the Pan-Hellenic Association, imposed on the fraternities a pledge-day on the first Monday in April and published in the college paper the following restrictions on rushing:

(a) Freshmen shall not be entertained more than once a month by the same fraternity.

(b) Freshmen shall not be invited to lunch at college more than once a week.

(c) Not more than three girls of the same fraternity shall sit at the same table with freshmen at luncheon.

We are happy to say that the new restrictions are working well and that, since they have been published, fear of public opinion forces the fraternity girl even if she disapproves of them, to remember them. Although conditions are still far from perfect, we feel that we have taken a great step toward the solution of the old "fraternity question" by recognizing the need of college regulation of the abuses incident, if not essential to, fraternities, which will always be, in the final analysis, college organizations.

Juliet Stuart Points, *Beta Epsilon*.



## The Necessity of an Aim in College.

There are many girls who begin their college career with no definite end in view. This lack of purpose is a dangerous evil.

Without a fixed aim our energy is not concentrated and we are drawn this way and that by mere impulse. Watch two boats on the water. One leaves a crooked path as it drifts aimlessly along; the other, guided by a firm hand, holds a straight course through the waves. There is a way of drifting through college, and there is a way of spending the days so that every one counts. An aim, whether it be to specialize in one study, or to gain a working knowledge of many, should in no way narrow us. It should give us a nucleus about which our general knowledge may center; it should direct our effort and help to make life full of well-spent endeavor.

M. Louise Dyer, *Phi*.

## The Key

**Our Duty as College Women.** Some of our sisters are always telling us of our duty to the fraternity. They say that we should take more time from our personal affairs and devote it to the fraternity. This is very good advice, but we should not follow it too far. In fulfilling our duty as Kappas we must not forget a broader duty incumbent upon us as college women. We are called upon to serve a broader duty incumbent upon us as college women. We are called upon to serve our college, our class, the Y. W. C. A., and many other interests, all of which, as well as our fraternity, have a claim upon us. We cannot leave this for one or two in the chapter, and trust them to do the work for all. Each should fill her place in the college community and use, to the best of her ability, every opportunity offered for broader activity. Do not let us become narrow and work for one interest only, but let us be all-round, active college women, and in this way become better Kappas.

Ella H. Bradley, *Upsilon*.



**Serving the College.** To the enthusiastic Kappa the word "Service" opens up a bewildering vista of possibilities, with some of which we are familiar enough, whereas others may not yet have claimed recognition. We are accustomed to define quite plainly our individual obligations toward the chapter, and a trifle more vaguely, those of the chapter toward the general fraternity, but here the clearness of vision stops, as a rule, and our ideas of service resolve themselves into a rosy-hued mist, which effectually conceals the practical possibilities lying close at hand.

One topic which demands definite consideration is that of the relations of the chapter to the college. The college, like the fraternity, deserves the whole-hearted support of its members, and the chapter with its strength of organization and of purpose, should prove a splendid instrument of usefulness. Let us ask ourselves this question: Is our chapter of Kappa



Kappa Gamma really bound up in the welfare of our college or university? Is it a necessary component, or merely an ornamental adjunct? We can readily answer that our chapter plays its part in the social life of the college; that its position and prestige are unquestioned, and that its standards are respected by faculty and students alike. This is all very well, but it is not enough. Can we point to any one practical service which the chapter, under our administration, has rendered the college? There are various methods of exercising the fraternity's right to be of use, such as the maintaining of medals or scholarships—with the help, perhaps, of the obliging alumnae—or the supplying of smaller wants in the various departments of the college—books, for instance, or pictures, or further equipment of any sort. An enterprising chapter in one of the smaller and less wealthy institutions might even concern itself with the increase of the college endowment.

There are, of course, other methods of usefulness besides those involving financial outlay. In any university or college movements arise from time to time which involve the whole student body, and problems of all sorts demand solution. At such times the members of our chapter, in conjunction with other representatives of the Greek world, should be able to be of practical assistance to their fellow students and to the faculty through their ability to judge matters from a sane and unified point of view. Suggestions along this line are necessarily vague, since local conditions must rule in each case, but opportunities for helpfulness are sure to prove plentiful, if we care enough for our college and for Kappa Kappa Gamma to look for them.

Juliette G. Hollenback, *Beta Sigma*.



**What Con-  
stitutes True  
Fraternity  
Loyalty?**

This subject, as suggested by an Epsilon sister, has been one of which I have often thought as I have seen the many different types of girls who associate in one chapter, and the even greater number in a fraternity and the equally large

## The Key

number of ways in which loyalty is understood. Perhaps these stray thoughts may help some one.

It is as unfair to one's fraternity to give always the best of one's time and effort to it, as to fail in giving it its due. We all know there are other interests that demand the attention of every college girl, and to be continually giving to a fraternity that which belongs, by every right, to other interests is a disloyalty of the worst kind. Nothing is surer to bring reproach upon a chapter.

The loyalty that will do most to raise a fraternity in the estimation of its friends and above the criticism of its opponents is the kind that will look beyond personal desires in order that one may have a clearer view of that for which the fraternity really stands. Our loyalty needs broadening out until we can say:

Not that I loved Caesar less, but that  
I loved Rome more.

The girl, who comes to her fraternity with devotion and conscientious effort to help and be helped by it, and who is willing to sink her personal prejudices and strive for the good of the fraternity when that seems to conflict with the chapter's wishes, has the best type of loyalty.

That which is true of the individual is true also of the chapter. That chapter, which can look no farther than the rounds of rushing parties, and contentions with rival fraternities for so-called honors, is not only a weakness but a menace to the whole fraternity. May there be no such chapter in Kappa Kappa Gamma.

My last word is this:

To thine own self be true;  
And it must follow, as the night the day,  
Thou canst not then be false to any man.

Ethel Gurney, *Kappa*.





## Fraternity Honor

I have found a text in our Grand President's message in the October Key: "Each one of us holds her fraternity honor in her hand; each is responsible for its protection."

I wish every girl before she is initiated could fully realize this responsibility; I hope every girl in the fraternity does realize it. When we enter the bonds of Kappa Kappa Gamma, just as in becoming a party to any other contract, we must lose some freedom of action. The loss to a Kappa should not be a hardship, but only a help toward a higher and nobler womanhood. In becoming Kappas we have chosen the Kappa Kappa Gamma standard for ours, and if it is higher than ours has been, ours must be raised to meet it. There is a fraternity level which every Kappa helps to make; let her remember that we fraternity girls are more or less in the public eye, humanly anxious to find a flaw in us, and that the act of one Kappa may be ascribed to all; and when she is tempted toward any indiscretion, however small, let her remember that in yielding she, by just so much, is lowering the standard of the fraternity she has promised to protect. Specifically, I mean that we must not do as individuals what we should not wish the fraternity to do as a whole.

I know that I have touched upon only one side of this question; there is the other and brighter view that whatever is in us of the good and noble will be reflected upon our whole fraternity, which I pray may be ever kept pure and beautiful and bright.

Marcia C. Dunham, *Beta Zeta*.



**Division of Labor in the Chapter** In accomplishing the many duties of the chapter, there is danger of letting all the work fall on a few able and willing girls, the other members standing back for various reasons. A natural and unassumed modesty withholds some who really do think themselves less competent; an acute consciousness of the amount of their own work and social duties deters others; a disinclination, or inability to see wherein they may

## The Key

assist, prevents a few; while a small number have a seemingly insuperable shrinking from work. The remedy lies in a more enthusiastic interest in the chapter. Duties should be assigned by the official head, and so assigned that no one girl has more than her share—not an easy task, by any means—and then every girl must take care that her part is faithfully performed. If she cannot do it herself, get a substitute. But she must keep the responsibility, for if she does not, there will be a delay and a hurry at the last moment, and the work will be carelessly done by some member who must neglect other affairs.

One final word: Let not any of us get the idea that we are overworked and imposed upon, for so sure as we do, we will make ourselves and others unhappy, and there will be "trouble coming." Let each one of us do her part willingly and well, and take care to help out when another is "extra busy," and the chapter affairs will go as smoothly as the toboggans of our northern sisters.

Mary Mason Jarvis, *Beta Xi*.



### **The Need of a Crest**

For some time we have felt that Kappa Kappa Gamma needed a crest, and have wondered why she has never had one. We do not like to use our keys for anything but our badge and really have nothing that will quite take its place for many purposes such as stationery, jewelry and the college annual. The sigma in delta does not mean anything to one who is not a Kappa, and the use of the Greek letter is common to all fraternities. There is so much dignity, mystery and individuality to a crest and all of these qualities ought to plead in its favor. We know how proud people are of their old family crests and how they cherish them as something handed down to them by their ancestors. Kappa has the owl, the fleur de lis, the sigma in delta, and the call: so many things that an artistic person could introduce to make a beautiful symbolic crest. We suggest that each and every Kappa, who is at all artistic, try and design one and send it to Eta



chapter, as we would like very much to bring the matter up in convention and decide upon one if possible. We hope the chapters will not only approve but will take an active interest in this movement.

F. Elvira Wallis, *Eta*.



### Sigma in Delta.

I'm a mystic, mysterious pledge pin, that's all;  
I usually make my debut in the Fall,  
When I'm pinned on the waist of a Freshman so green  
That she can't even tell what my two letters mean.  
I'm Sigma in Delta, no more and no less,  
'Tis my duty to stick to the Freshman, I guess.  
Her first weeks of happiness rest all with me.  
And then I'm deported—replaced by a key.  
But I'm Sigma in Delta and that is the reason  
I'm put on the shelf until next rushing season.

Nell Malloy, *Beta Nu*.



## Editorial.

The Key wishes for Kappas everywhere a most happy and prosperous year.



The Key takes pleasure in publishing in this number a poem by Julia Ward Howe, written at the time of the death of her friend, Mary A. Livermore. This poem should be of special interest to Kappas as Mrs. Howe is an honorary member of Phi chapter of Kappa Kappa Gamma and Mrs. Livermore was an honorary member of Iota.



The following list of suggested subjects for the Parthenon has been submitted for publication by Phi chapter:

- Place of scholarship in the fraternity.
- Inter-fraternity spirit as advanced by the Pan-Hellenic Association.
- Duties and relation of alumnae to active chapter.
- Duty of active chapter toward alumnae.
- Should the size of the chapter be limited?
- Fraternity spirit versus college spirit.
- Promotion of closer relations between chapters.
- What uses should be made of fraternity rooms?
- Value of occasional talks by older members.
- How long should the freshmen be pledged before initiation?

Many alumnae associations have asked for suggestions of lines of work along which they may follow, and in answer to these pleas it seems quite appropriate to suggest the commendable plan that the Cleveland Alumnae Association is following this year, namely, the study of the history of the different chapters represented in their association. As an illustration of this suggestion, the Key has taken the liberty of publishing, in full, the year's program of the Cleveland association.

It is with regret that we have but three alumnae letters to publish in this number of the Key. Of course, the annual



report of the alumnae associations is not due until next February, but we should like to have a few words from every association for every number of the Key. And the alumnae personals! They should be twice as numerous as they are. How can we expect to keep the interest of the oldest members of Kappa Kappa Gamma if the Key never mentions the names of any of their college friends?



Our alumnae associations now number twenty-seven. The last one to be added to the list is the Meadville Alumnae Association at Meadville, Pa.



We are creatures of habit. If we habituate ourselves to do things as they should be done, the right way will be easier than the wrong, and, in this connection, the Key makes a plea that all articles for the Key be submitted in the correct form. To simplify the matter, a list of regulations has been formulated as follows:

1. Lines should be double spaced.
2. Margins should be left on both sides.
3. Large paper should be used.
4. Only one side of the paper should be used.
5. The news letters and personals should be headed with the chapter and full name of college, i. e., Phi—Boston University.
6. The Parthenon article should be headed with the title.
7. The Parthenon article, news letters and personals should be submitted on separate sheets of paper.
8. Articles strictly personal should not be included in chapter letters, but in a separate list of personals.
9. The author should sign her name with her chapter at the end of the article on the right hand side of the page.
10. Signatures, other than that of the author, should be placed separately to avoid confusion.
11. Communications that are not typewritten, such as subscriptions to the Key, must be written legibly.

The new editor wishes to thank all those who have assisted her, in any way, in this number of the Key, and especially are thanks due Miss Lathrop, who has so kindly given her time and energy, that the present editor might have the advantage of her year's experience. The Key wishes for Miss Lathrop success in all that she undertakes, equal to that which she attained as editor of the Key.



### Notices.

In the April Key an article entitled "Narrow and Broad," was signed Lucile Carr, *Sigma*. This should be corrected to read Lucile Carr, *Mu*.

\* \* \* \* \*

A second edition of the Kappa Symphony cards has been printed. These are on sale at the same place as before, ten cents apiece. Orders for the same should be addressed to Adeline Jacobs, 1307 N. Marshall Street, Philadelphia, Pa.



### Alumnae Notices.

The alumnae subscription to the Key has been raised to one dollar a year, as the former special alumnae rate has been found insufficient to cover the expense of the four numbers of the Key.

\* \* \* \* \*

In accordance with a suggestion made at the last Grand Council session, an alumnae editor has been appointed. All alumnae letters and personals should be addressed to the alumnae editor, Mrs. Guy M. Walker, 504 W. 112th Street, New York City.

\* \* \* \* \*

The Grand Registrar is still in need of early copies of the Key, especially Volume I., Number 1 (May, 1882), Volume IV., Numbers 2 and 3 (March and June, 1887).

\* \* \* \* \*

Copies of all numbers of Volumes I., II., III., IV. (1882-1887), also of Volume VIII. (1891), and Volume X., Number 1 (January, 1893), will be most acceptable. May the response be prompt. The request is urgent.



## Chapter Letters.

### Alpha Province.

#### Phi—Boston University.

Greeting to Kappas all, and special good wishes to the new girls of each chapter. May they find the true Kappa spirit set forth in the sisters who welcome them.

We are well started on this year of college life. Rushing season was as strenuous as ever, but shorter than that of last year, for which blessing we are duly grateful. Initiation took place November 18, at the home of Mrs. Amy Wales Bullock. About seventy-five were present. We were glad to welcome several Kappas from other chapters. It is with pride that we introduce the following freshmen:

Marion Conant Butterworth, Florence May Felton, Mary Harriet French, Georgia Elizabeth Thompson and Marion Edwards Treadwell.

Phi wishes a prosperous year to sister chapters.

M. Louise Dyer.



#### Beta Epsilon—Barnard College.

Beta Epsilon has been well occupied with studies and frivolities since the last letter to the Key. What has taken the time of our five seniors was the 1906 entertainment to the freshman class. It was given first on November 3 and repeated, at the request of 1908, on November 28. It was a great success and much appreciated as being original. A musical take-off on our college life was certainly a medium for a great deal of amusement for actors and audience. A Kappa was the hero of the senior show, and one of our 1908 girls was the hero of the sophomore play given on November 17 and 18.

Our chapter life is broader this year, owing to the presence of so many girls from other colleges. Elizabeth Hall,

## The Key

*Beta Iota*, Lula Belle Wooldridge and Jessie Wooldridge, *Theta*, are in our apartment family. Phylinda Gaston, *Gamma Rho*, is transferred to the junior class. Besides these, there are many Kappas doing graduate work in Columbia. Some of these live near us in Whittier Hall: Miss Stearns, *Chi*, Miss Flint and Miss Pray, *Eta*.

Miss Rice, *Beta Xi*, and Miss Prentiss, *Theta*, we see quite often, although they are not staying near us. At our last spread, November 25, no less than ten chapters were represented, and two Grand Council officers, the Grand Registrar and the editor of the *Key*. For girls who have not been able to go to Convention, it is a great privilege and advantage to know girls from other chapters. It is only at such an affair as the Kappa lunch at Wanamaker's on November 4 that one realizes that there are so many of our sisters in the city. There was a goodly number that day to meet the Grand Registrar.

Beta Epsilon sends greetings to all the chapters.

Marjorie Ferguson Brown.



### Beta Sigma—Adelphi College.

The opening of college in September brought twenty-one enthusiastic Beta Sigmas together again, eager for their first full year of Kappa fellowship, and not averse to a little seasoning of trials and problems. First among the latter came the question, "Where shall Beta Sigma live?" And the house-hunting began forthwith, together with the trials. Exhaustive search resulted in the discovery of two rooms, each situated conveniently near the college, so we tried them both. The first could be rented for a short time only, the second proved quite unsatisfactory, and now we are reduced to meeting in each other's houses, with the prospect of doing so during the rest of the winter. However, we are saving our rent money and expect to appear in appropriate and attractive quarters of our own next year.

Our ill luck has not extended in all directions, by any means. We feel perfectly satisfied, for instance, with what fate had in store for us in the way of new members. The



problem of rushing can hardly be said to exist for Beta Sigma, for since Kappa is the only national woman's fraternity represented here at Adelphi as yet, it is but natural that the securing of new members should be chiefly a matter of choice. In October we initiated Marguerite Welles, a senior, and Irma Weeks, a sophomore, and we have pledged four freshmen, Ethel Kipp, Ruth Waldo, Marion Cudlip and Winifred Marshall, who are to be initiated on November 24. This initiation will rival in glory our historic installation, for two Grand Council members, Miss Wheeler and Miss Voris, are to be present, besides representatives of several of the other chapters. Miss Wheeler, thanks to a relative who is kind enough to live in Brooklyn, has been with us for some time, and has made the miles that stretch between our Western sisters and ourselves seem fewer.

If we had the power of annihilating distance completely, you would doubtless be receiving invitations to a Beta Sigma tea on December 9, for on that day we expect to entertain a number of friends, in and out of Kappa, and we should like nothing better than to stretch the walls of Adelphi to include every member of the big Kappa army.

Best wishes to you all, especially to our new editor, to whom we pledge our heartiest support.

Juliette G. Hollenback.



### Psi—Cornell University.

Psi sends greetings to all Kappa Kappa Gamma.

Our college year opened this term with the same enthusiasm as heretofore. Although our first four weeks were spent in "rushing," as usual, we have recovered from the effects and are once more in the midst of our work with the midyear's close ahead. The first four weeks were made less strenuous, however, this year, by doing away with rushing on Mondays and Thursdays. I am sure we were all glad when these two days came round each week, and they were days of rest and quiet.

Early in the term, the Pan-Hellenic Association gave a

## The Key

tea to the entering girls, and this proved a great success. On October 12 we gave a tea in honor of our new Warden of Sage. We had the pleasure of having receive with us Doctor Emily Dunning Barringer, *Psi*, who has been appointed the physical examiner of Sage College. Later in the term we were surprised by a little visit from Elizabeth M. Rhodes, *Psi*, '97. The only fault we have to find with the visit was that it was entirely too short. But in this brief time we learned to appreciate more than ever Beta Sigma's watchword, "Go ask Elizabeth."

By the time this letter is printed we will also have had a visit from Ethel Gauvran, *Beta Sigma*, who expects to spend the Thanksgiving holidays with us. We also expect a short visit from the Grand Registrar, on her way home from the East. Alice Dubreuil, '06, who was not in college last year, has returned to graduate with her class. We are happy to be able to introduce our new members: Anna C. Stryke, '08, of Philadelphia, Pa., and Anna May Deniton, '09, of New York City.

In closing, *Psi* extends to all Kappas best wishes for a happy and prosperous year.

Amy Teagle Rhodes.



### Beta Tau—Syracuse University.

To all in Kappa Gamma, Beta Tau sends greetings and best wishes.

Since college first opened we have experienced the most strenuous rushing season that has ever been witnessed at Syracuse University. The contest has been between eleven different fraternities, and neither time nor energy has been lost by any of them. But that season is now over and we are glad to add to Kappa's ranks seven girls whom we are proud to introduce to all—Ruth Adams, Marian Brainard, Marie Hawley, Blanche Hinman, Sara Lamoreaux, Flora Wright, Katherine Wright. Our annual initiation took place November 17. We had with us during the first few days of college a sister from Beta Epsilon, Miss Newland, and we feel



that our acquaintance with her has linked us more closely with our Barnard chapter.

Beta Tau wishes to thank all the chapters who so promptly and willingly responded to her request for banners. While the pennants are of a material value to us, they have their value in calling to memory the spirit of the fraternity which unites us and makes us one. As we look at them we are reminded more and more of the bond which extends from Massachusetts to Washington, and a comforting thought tells us that no matter where we wander we are sure to find those who have a common interest with us. We now have every chapter, with but few exceptions, represented in our home, and we cannot too strongly express our appreciation of the part you have each played in this work.

Grace Henderson.



### **Beta Alpha—University of Pennsylvania.**

By the time the Key is published most of us will be welcoming the prospective Kappas into our midst.

Our Pan-Hellenic Council has postponed "Asking Day" to the second Saturday after Thanksgiving. This, we feel, is an advantage, for it gives us a longer time in which to know the new girls. Those of you who live in dormitories and have opportunities to meet the girls informally after class hours, can hardly realize how serious this question is for those of us who only see them during classes. We have always felt that we would rather lose a girl than have her come to us unduly influenced by "rushing stunts" which are in many respects insincere. These disadvantages have long been felt, and we are looking forward to the time when Pennsylvania girls shall enjoy all the advantages and joys dormitory life brings.

On November 18, Beta Alpha invited the women of the University to an informal gathering. We played progressive games and after these were finished gathered around the piano and sang Pennsylvania songs. Many of us had never met before, but we hope to have other opportunities during the winter.

Sally Mark Barclay.

## The Key

### Beta Iota—Swarthmore College.

To all in Kappa Kappa Gamma, Beta Iota sends greetings.

Since the opening of college, Kappas at Swarthmore have been quite busy. On October 13 we entertained the alumnae in honor of Founders' Day. During the chestnut season we all took a cross-country walk to Media and had a most successful picnic luncheon at Mabel Cheyney's. Winifred Neville Craig, '05, entertained the Kappas and some of the college men at Media. The decorations were appropriate to Hallowe'en and we all had a thoroughly good time.

This year we have at Swarthmore representatives of our Western chapters: Mary Eunice Darnell, *Mu*, and Mary Wyman Lawrence, *Chi*. Both have entered the junior class. Miss Jones, *Phi*, is living in "the village." Miss Disbrou, *Beta Epsilon*, paid us a short visit while at Bryn Mawr, as a delegate to a Convention of Student Government of the Women's Colleges. Lila K. Willits, one of our charter members, also visited us.

The college lecture course is especially good this year. We have already had a talk on Cromwell, by Rev. Newell Dwight Hillis, and a recital by the Kneisel Quartette. After the Thanksgiving holidays we expect to have a lecture by President Woodrow Wilson. Recently it was announced to us that an endowment of fifty thousand dollars had been left the college by the late Joseph Eddy Gillingham. This money is to be used partly for scholarships.

Beta Iota sends best wishes to all.

Elizabeth Lane Verlenden.



### Gamma Rho—Allegheny College.

Gamma Rho has had a very successful rushing season this year, and we have twelve new members to introduce: Carrie Davis, Gail Richmond, Anna Hayward, Edith Fugate, Carrie Sowash, Mary O'Donnell, Emma Gillet, Mary McLaughlin, Melissa Walker, Mary Nichols and Lillian Thorne. Marguerite Fuller was pledged.



Aside from the many fancy-work parties, evening parties, picnics and informal gatherings which characterize rushing season, the progressive dinner party has become a feature with Gamma Rho. Every one seems to enjoy the informality of such a dinner, and enters into it with the right spirit. The different courses are given at the homes of the town girls, and the greater the distance to be traveled between courses the merrier the occasion will be. On October 27, Gamma Rho was "at home" with Mrs. Walter Harper, Diamond Square. Erma Rogers, Harriet Hampson, Helen Heiner and Carrie Dice were guests at the party, and since their coming was a surprise to most of the girls the occasion was not merely a social event but a pleasant reunion as well.

Gamma Rho sends greeting and best wishes for a happy New Year to all her sister chapters.

Lorena Palm.



### Beta Province.

#### Lambda—Buchtel College.

From Lambda Chapter heartiest greetings to all the new sisters in Kappa Kappa Gamma.

Buchtel has started in with larger numbers than it has had for many years, and the prospects for a new Science Hall are bright. Shortly after college began we entertained the freshman class in our rooms at Curtis Cottage. Our enjoyable and strenuous rushing season included, among many pleasant functions, an alumnae party, a week-end house party, theatre party, etc., and ended very successfully in pledging four women, of whom we are duly proud. On Saturday, November 25, we held initiation services at the home of one of our seniors, and now introduce to our sisters Lulu Weeks, '06, Marjory Prior, '09, Helen Knight, '09, and Bernice Chrisman, '09.

Ruth Hotchkiss.



## The Key

### Beta Gamma—Wooster University.

Days before college began there was much excitement and lots of hard work going on at the new Kappa House. When the term opened we were very proud of the result of our labors. Then followed a very busy rushing season, with dinner parties, picnics and drives. An afternoon reception for the alumnae and open house in the evening for some of the men of the college proved very enjoyable functions.

Several of our old girls were back for the festivities, Bess Johnson, of Sewickley, Pa., Jessie Vogt, of Zanesville, Ohio, and Clementine Axtell, of Jackson, Ohio. Mary McKinley, a senior, has been out of school for several weeks with nervous prostration, but we hope to have her back after Christmas.

Initiation week is close upon us, and we are planning great things for our three loyal initiates, Grace Baird, '09, Helen Mealy, '09, and Florence Moore, '06. Before the end of the term we will give a Christmas party in our chapter house, and we are anticipating a royal good time.

May you one and all enjoy a prosperous and happy New Year.

Catherine S. Vance.



### Beta Nu—Ohio State University.

We hail all Kappas everywhere,  
On land and sea,  
And welcome those who newly wear  
Our golden key.

Eight new Kappas stand as a record of Beta Nu's summer and fall rushing season, which ended on pledge day, September 21. Under the new Pan-Hellenic system, rushing has been very limited, and much more dignified than usual, as a result of which, the former bitterness of feeling between our fraternal organizations has almost entirely disappeared. Initiation was held on the afternoon of October 13, ten active members taking part. The initiates were Maude Jones, Florence Newlove, Myra Sherman, Bonnie Woodbery, Corrie McCormick, Elizabeth Allen, Margaret Brown and Mabel Everett.



The annual banquet in honor of the new members was held the following night, while their formal introduction to the college world occurred at a reception and dance Friday evening, November 17.

It was our turn this fall to attend the Michigan-O. S. U. football game at Ann Arbor, where Beta Delta royally entertained eight of us at the Kappa House and later at the game. Life in a chapter house is one of Beta Nu's dearest ambitions, and our little glimpse of Beta Delta's happy family has filled us with the mighty determination that some day we will have a home of our own.

An added pleasure fell to us this year in having in our midst Helen Felger, *Beta Gamma*, who is taking her senior year's work at Ohio State. Beta Nu has had a number of visitors this fall. At our dance Marie McKinney, *Upsilon*, and Mabel Felger, *Beta Gamma*, were our guests, while during the Y. M. C. A. State Convention we had with us Mary McKinley, *Beta Gamma*, and Margaret Taggart, formerly of that chapter, but at present attending the Western College at Oxford.

Lillian Pope.



## Beta Delta—University of Michigan.

On Saturday, October 28, Beta Delta welcomed to her circle six pledgelings; Clara Trueblood, Natalie Hine, Florence Scott, May Bennett, Xantha Swingle and Edna Converse. We now have a chapter of sixteen, for out of our class of twenty-four last year ten seniors left us and four underclassmen did not return to college this fall. Mildred Honnecker and Edith Edmiston are at home in Cleveland, Inez Bedell is at Vassar, and Ethel Trask left this October on account of illness.

Just before initiation we gave a party for our freshmen in our new home on Baldwin Avenue, which was a success in every respect. On November 11, at the time of the O. S. U. game, we were happy to entertain eight girls from Beta Nu chapter at lunch. A week later, at the Wisconsin game, we had with us some of our old girls, Lucy Elliot, Blanche Enyart, Kitty Avery, Marie Lindsley and Fredericka Hine, besides

## The Key

several other guests from Detroit. We were sorry that the Wisconsin girls were unable to be with us. The usual interest has been manifested this year in Michigan's athletics, and there only remains our contest with Chicago, in which we hope to come out victorious.

The Michigan Union banquet, held last week, was a great success, and plans for a Michigan clubhouse are in a fair way to materialize in the near future. Saturday, the 25th, the Collegiate Sorosis entertained the senior girls, and the Kappa Kappa Gamma seniors were well represented.

A new physical laboratory has been added to the campus in connection with the engineering department. To make room for it, a frame building fronting on South University Avenue, was removed, which was felt by everybody to be a great improvement.

Beta Delta sends sincerest wishes to all her Kappa sisters.  
May Bennett.



### ***XI—Adrian College.***

This college year opened with the brightest hopes for Kappa Kappa Gamma. Saturday evening, September 28, Jenny Gilkey Boyd entertained us informally at her home on Chandler Street. On our anniversary, October 13, we pledged the following girls: Tatt and Nila Link, Paris, Ill., and Mary Elvira Davis, Pittsburg, Pa. The following Saturday we pledged Lena Beem, of Richwood, Ohio. On that evening we entertained our pledges at a dinner at the Colonial Home in the city. On October 28, Margaret Knapp-Wilson entertained the active chapter and pledges at dinner. Nela Kelly entertained the Kappas in honor of Mrs. Ethylin Wilson-Metcalf, of Missoula, Mont., on November 4.

Our initiation took place on Saturday evening, November 11, and we had the pleasure of having with us several alumnae from the city. We feel that we have started on a very happy and prosperous year, and we wish all good fortune and happiness to the other chapters of our fraternity.

Marian Walker.



### Kappa—Hillsdale College.

This has been a quiet, happy fall for Kappa, as we have done practically no rushing. Our only initiates this year will be two freshmen, who were previously pledged, and so very soon we shall be able to introduce two more Kappas.

We have been very pleasantly entertained this fall; once at the home of Mrs. Cora Bailey Dimmers, when she gave a handkerchief shower in honor of Claire Sands, '96, and again by Pi Beta Phi, who gave a "children's party" in our honor.

Our best wishes for other chapters.

Della McIntosh.



### Gamma Province.

#### Delta—Indiana State University.

Delta sends greetings to all her sister chapters.

First and foremost come the freshmen. They are always interesting, and occupy a great deal of attention at the beginning of college. This year we had a contract which was to last for one week, and we were limited in our parties, only being able to give three. The first one was a dance, where we invited all the fraternities, with their "rushees;" the second, a reception given at the home of one of our charter members, Mrs. Beck, to which we invited the alumnae, faculty and our friends among the townspeople; the last one was a dinner given at Mrs. Teters. This dinner was limited to just two alumnae members and six active members, with, of course, all our "rushees." We initiated on Saturday, October 20, the following girls: Edith Holloway, Louise Rabb, Dorothy Pendergrass and Josephine Sare.

This year we have a beautiful new chapter house, just opposite the campus on Third Street. It is a much larger house than the one we had formerly, and we had to purchase much more furniture, but our friends, both among the alumnae and the townspeople, helped us very efficiently. The alumnae association gave us our dining-room furniture, a mission table and two dozen mission chairs. They also helped us with our rugs, dishes, etc. We gave a very informal party

## The Key

November 12 to our friends who have been so kind to us during the year.

For the past two months our interests have been centered on football, daily practice and the several games. The best game of the season was the one played at Indianapolis on October 28, between Purdue and Indiana. Nearly everyone went to see the game, and it marks one of the greatest days of the year. From the moment we left Bloomington at 8 o'clock in the morning until we returned home about 4 o'clock the next morning, the day was one of intense enthusiasm and excitement. The game stood 11 to 11. We all are justly proud of our "Indiana Eleven."

Delta sends best wishes to all for a Merry Christmas and a happy and prosperous New Year.

Ethel Simmons.



### Tota—De Pauw University.

Greetings from Iota to all in Kappa Kappa Gamma!

At last the time has come when, through the pages of the Key, we can introduce to the fraternity world our twelve freshmen, of whom we are most certainly very proud. Kappas, there have been added to our ranks, from the girls who have entered De Pauw this fall, the following sisters: Mary Amos, Hazel Carr, Edna Carroll, Winifred Conner, Helen Montgomery, Mildred Pyke, Helen O'Neal, Myrta Smith, Lillian Switzer, DeEtte Walker, Fleta Ward and Margaret Walmer. As we rejoice in them, we also rejoice with our sister chapters, knowing that they, too, have been the means of admitting other girls into our fraternity. Our congratulations are also extended to all the Kappa freshmen everywhere. Our manner of conducting the "spike" this fall was quite new for us. For the first time in many years we had a definite pledge day, coming at the end of a four weeks' rush. During this rushing season we were held by certain rules, lessening the strain and continued activity. These regulations had been determined upon by the Pan-Hellenic Association. In some ways, this innovation in rushing was quite successful, while in others we have felt that it had



its drawbacks. The long-continued suspense and strain was very trying to both new and old girls, and, in a few cases, it interfered with other duties in a way that was not for the best. On the other hand, however, we had an opportunity of judging girls from all sides, and in a manner that we did not have under the other system. According to the Pan-Hellenic regulations, we were permitted to give only three functions during the rushing season. Our first one of these was an informal reception to the freshmen, at which we were assisted by our town alumnae. Our second party was a progressive dinner, which was followed by a formal reception, to which we invited the college men. This was by far the most elaborate function. The third one was an evening "feast," at which we aimed to have everything as informal and unconventional as possible.

We initiated on the evening of November 4, and we were very fortunate in having with us at that time not only quite a number of our own more recent alumnae but also three Delta girls, Ruth Maxwell, Gail Blankenship, Nelle Stoner, and three of Iota's charter members, Mrs. C. E. Bacon of Indianapolis, Mrs. J. W. Walker of Greencastle, and Mrs. L. W. Gatch of Indianapolis. The interest of our alumnae in the active chapter is a source of great pleasure to us. During the term we have had very pleasant visits from Bess Baer, Anne Shackelford, Helen Hurst, Edna Place, Beryl Harte, Lou Baer, Gertrude Lieber, Mrs. Ralph Todd, Lucia Hurst, Nelle Fudge, Eva Lieber, Mary Harding and Mrs. Richard C. Jones.

Our chapter house has been very much improved this year by having been repainted and repapered, and by the addition of hardwood floors, new rugs and draperies, and several articles of furniture. Most of these latter have been given to us by different alumnae.

Lala Ruth Randle.



## Mu—Butler College.

Since the excitement of rushing week is over, Mu has settled down to study, hoping to have the success in her col-

## The Key

lege work that she had with the freshmen, for during the first week five girls were pledged, four of whom now wear the key. Our new Kappas are Cornelia Keyes and Elsie Sweeney of Columbus, Indiana, and Elizabeth Brayton and Edith Huggins of Indianapolis. Edith Poulson of Greenfield, Indiana, has her initiation to look forward to next term. Rushing consisted of a progressive dinner, a dance, a theatre party, a marshmallow roast in the woods, and the annual banquet of Mu and the Indianapolis alumnae. A week later, mock initiation, at the country home of Edna Huggins, proved interesting to the freshmen, and the following week they were initiated into Kappa at the home of Nell Wheeler.

Since initiation, the routine of school work has been broken by football games and an occasional dance. On the night of November 13, Mu gave an informal dance in the Sigma Chi hall. As for football, Butler is proud of her record this year. On November 18, occurred the great game with De Pauw, which Mu attended in a body. We are looking forward to another football party on the 25th, for the Earlham game.

The week after Thanksgiving, the Butler Kappas will present "A Scheme that Failed," at the home of one of the alumnae. The proceeds of the play will go to the Butler College Settlement. Kappa is especially interested in the work, as Miss Anna Stover, a Mu alumna, is at the head of it.

Nell Wheeler.



## Eta—University of Wisconsin.

We of Eta are very happy to introduce our new members, Ruth Hayes, Rhoda Rietow, Edna Brown, Helen Cutter, Jeanne Kirwan, Lillian Adams, Genevieve Gorst, and Ethel Wright. We also welcome to our chapter Mildred Barlow, *Beta Lambda*, and Josephine Howe, *Gamma Rho*. Beside these girls we are especially glad to have with us again Lois Main, who studied abroad last year; Juliet Coggeshall, who attended the University of Toronto, and Maud Monroe, who was home because of illness.



Our rushing season was very short this year, and most of the entertaining was done in our own home. Our annual Eta banquet, October 21, was attended by nearly one hundred loyal Kappas.

Alpha Phi and Gamma Phi have recently become our neighbors, having moved into their fine new homes in Sterling Court. Delta Gamma has a splendid Queen Anne house under construction.

This year our University has an attendance of 4,000. There are several additions to the university buildings since last year: A chemical laboratory, a Y. M. C. A. building and a Y. W. C. A. house. An annex is to be built on University Hall, and also on the State Historical Library before spring.

November 10, Delta Delta Delta entertained for Miss Fitch, the editor of the "Trident." We were all much pleased to meet and entertain Miss Fitch. November 18, receptions were given to the university women by several members of the Women's University League. We give our first party November 25, when we introduce our freshmen.

Eta sends greetings to all her sisters.

Barbara M. Munson.



### Beta Lambda—University of Illinois.

One of our most successful rushing seasons ended October 26, when we pledged seven new girls, Nina Crigler of Normal, Ill., Alice Eager and Alice Craig of Aurora, Ill., Antonnette Schwarzkopf of Chicago, Lena Thurston, Winnetka, Ill., Madge Gundy, Danville, Ill., and Genevieve Rohrer, Somonauk, Ill. Although rushing was very exciting, it was not as strenuous as it has been in previous years, on account of the new contract which granted only five functions during the four weeks, and no rushing before seven in the morning and after seven in the evening, except on Friday, Saturday and Sunday.

On October 13 we celebrated the birthday of Kappa Kappa Gamma by an indoor picnic at the chapter house.

Charlotte Gibbs has been made an instructor in the Household Science department, and is taking an active part in the

## The Key

chapter again. We are glad to have with us this year Isabel Mabin, *Upsilon*, who has affiliated with the chapter and is living in the house, and also Anne Drew, *Upsilon*, who is instructor in the academy.

The day of the Chicago-Illinois football game, November 18, the Beta Lambda and the Upsilon chapters took luncheon together at Marshall Field's, after which several of the girls went to Evanston to visit.

The fraternity circles have been widened by chapters of Delta Upsilon and Alpha Xi Delta.

The matter of greatest general interest at Illinois this fall was the installation of our new president, Edmund J. James, which brought many famous educators to Illinois from different parts of this country and abroad, several of whom we had the opportunity of hearing.

Beta Lambda sends best wishes to every chapter of Kappa Kappa Gamma.

Louise Hanna.



### **Upsilon—Northwestern University.**

To all her sister chapters Upsilon sends greetings.

Rushing is at last over and we want to introduce to you our five new girls, Helen Tanquary, Anna Watkins, Eunice Lovejoy, Elizabeth Shepardson and Alice Bunker. The rushing season was longer and more strenuous than usual this year, but pledge day came at last and we were all very proud and happy over the result. We wish especially to thank our alumnae for their kindness in opening their homes to us.

Our initiation was held November 20 at the home of Winifred Hull, one of our alumnae. Many of our older Kappas were there, and of course we had a fine time. Due to a fire which occurred this summer, in which our fraternity rooms were damaged, Upsilon is homeless. They are working on our rooms at last and we hope soon to have some place we can call our own.

We felt ourselves particularly fortunate in having the Grand Council session meet in Chicago this fall, as it gave us an opportunity to know most of our grand officers. Their



visits were very pleasant and helpful to us all. A happy New Year to all in Kappa Kappa Gamma.

Ella H. Bradley.



### Epsilon—Illinois Wesleyan University.

Time has slipped by so fast we can hardly realize that three months of our always too short school year have gone from us; but we have been kept busy with Kappa duties and pleasures.

On October 30 we entertained the new girls in school at a dinner at Flora Warlos's. You all can imagine us eagerly watching for the Kappa traits in each and every one. A few days later we held an informal reception in our hall for the new girls, to make them feel that Kappas wished to make them at home. Mary Marquis gave the active girls and their friends a typical Hallowe'en party. Bertha Coyle entertained all the girls at her home in Gridley for two whole days, and such a Kappa house-party! The old songs were sung, old ties renewed, and we all returned home with a strengthened feeling of loyalty to Kappa Kappa Gamma.

October 18 we held initiation at Hilda Buescher's. Many of our alumnae were present. Epsilon presents to Kappa Kappa Gamma four new pledges, Lucile Hodge, Irene Cunningham, Grace Wells and Bessie Welch.

Everetta Roe.



### Delta Province.

#### Chi—University of Minnesota.

Chi sends greetings to all in Kappa Kappa Gamma.

Much has occurred to us since we last wrote to you. Our new freshmen are of primary interest, of course. We pledged four girls, Louie Morgan, Jessie Simpson, Elsie Tileston and Louise Hill. Louise Hill was obliged to leave college before she was initiated, so she is not now wearing a key. We hope very much that she will some time soon. Initiation was held at the home of Mrs. George Gillette on the evening of Oc-

## The Key

tober 14. It was an unusually happy one, and the alumnae were very proud with us of our new Kappas.

The alumnae have been very good in making it possible for the chapter to have some very pretty rooms this year. They are three downstairs rooms, opening into each other, and very tastefully furnished. On Thursday afternoon, November 16, we were at home to our alumnae, in our chapter rooms, and we were certainly very proud of them. It has never been possible before for us to have them visit us in a home of our own. We hope to have them often with us this winter.

There is much interest at the university now in the erection of three new buildings: the new main, the woman's building, and a new medical building. The Minnesota alumni are agitating the question of enlarging the campus. It really seems quite necessary, because with so many new buildings things will be very cramped. As yet no definite step has been taken in the matter.

On Saturday, November 18, Olive States and Gladys Hargreaves came up for the game. We enjoyed knowing them so much. One does not know what a pleasure it is who has not met Kappas from other chapters.

Chi feels, after seeing you all in the last Key, that she knows you much better than before, and to every individual Kappa she sends her very best wishes.

Helen Hill.



### Beta Zeta—Iowa State University.

As a result of our rushing this year, Beta Zeta has seven new members and one pledge. Joseph Lynch, Catherine Green, Mildred Schultz, Flora Cooper, Henrietta Prentiss, Jessie Manatrey and Catharine Lovell were initiated several weeks ago, and Alice Mueller is pledged to us. Henrietta Prentiss is a graduate of Smith College, and Jessie Manatrey of Parsons College; both are taking postgraduate work here.

The fact that we have a chapter house this year simplified rushing, in some respects—it gave us a definite gathering place, where everything could be discussed, and also made it easier



to entertain. General conditions of rushing here have been somewhat altered, too. We have had, for the first time, a pledge day, agreed to by all four fraternities. Thursday, the opening day of school, was the one chosen. This has made little difference to us, for one of Beta Zeta's rules has long been no pledging before matriculation, but it has not before been a common rule at Iowa.

Our local alumnae chapter has helped us very much in starting our chapter house this fall. They hold their meetings at the house, and at the last two invited us to a spread afterwards, and presented us with blue and white dishes.

Pauline Crouse, *Beta Zeta*, '04, was with us for initiation. Clara Westbrook, *Beta Zeta*, '05, and who is now studying art in Pratt Institute, was with us for a few days at the beginning of school. Margaret Budington, *Beta Lambda* and *Beta Zeta*, is to be married on Thanksgiving day to Mr. Harry Plum, of Iowa. Ruth Paxson, *Beta Zeta*, is to be here this week and will spend part of her time at the house.

Elizabeth Julia Sherwood.



### Theta—Missouri State University.

The past three months have been busy, happy ones for Theta. We have been very successful this year, and with great pride we introduce to our Kappa sisters nine enthusiastic freshmen, Katherine Barnes, Gertrude Cosgrove, Susan Ellison, Nell Hayman, Florence Helm, Mary Jesse, Juliette Moss, Mariam Ridgeway and Georgia Sturges. We also have two pledges, Clara Thompson and Caroline Jesse, who will wear the key next semester.

On Kappa's birthday, October 13, we had our first annual banquet after an impressive initiation service. We had thirty-four present, and greatly enjoyed having with us some of our out-of-town alumnae. We hope to have more of them with us next year. We have given several dinners, dances and feasts in our newly furnished house. Our new furnishings are a great source of pride, as we have worked hard to get them. Eleven of our girls live in the chapter house and three more will come in after Christmas. This year Theta has an

afternoon at home on the second Tuesday of each month. This is just an informal way of entertaining the faculty ladies and our friends among the girls of the university.

The boys' gymnasium is at last almost completed. The girls are interested in it not only because one more building is added to our "dear old 'varsity," but because we have a share in its central hall where the alumnae banquet and other grand "stunts" are to be given.

Miss Edna Terry, *Upsilon*, is teaching in Stephen's College this year. We have grown to love her so much that it seems as if she were one of our own Theta sisters. Miss Fiffille Willis, who has just returned from abroad, will be in Columbia this winter, much to our delight. On the night before the Kansas-Missouri football game on Thanksgiving day the Kansas City alumnae will give a banquet to the Omega and Theta girls. Several of our girls are going, and we are anticipating great pleasure from meeting girls of another chapter.

Theta wishes all Kappas, old and new, a happy and prosperous New Year.

Berenice Vance.



### Sigma—University of Nebraska.

At this time last year, Sigma was feeling pride in her "famous eleven;" this year it is in her "famous nine." Last month we initiated Edith Wilson and Mabel States of Lincoln, Corinne White and Florence Harford of Ashland, Marie Kesterson, Madge Merrill and Etta Gravelle of Fairbury, Eva Casey of Pawnee, and Eva Penny of Wood River. Since then we have been reaping all the pleasures and benefits of their enthusiasm and their comradeship.

This month was marked by the annual visit of Miss Paxson. She was with us for ten days, and every one of us felt the influence of her presence.

At present we are recovering from the effects of our rather strenuous evening at the "County Fair," given in the armory by the university Y. W. C. A. The Kappa Kappa Gamma booth bore the name of the "Variety," which sufficiently suggests the "stunts" performed therein. Although



hastily arranged for, the booth, together with a flower booth, also conducted by members of Kappa Kappa Gamma, succeeded in making almost twenty dollars for the Y. W. C. A. Another institution in our university life which can be made a great factor in social breadth and interest (the lack of which brings a good deal of well-deserved criticism upon us Greeks), is the tea given every Friday afternoon, in the armory, to all university girls.

We entertained our alumnae with a musicale soon after Thanksgiving, and intend to give our annual "informal" soon.

Our last year has been so happy and so successful that we hope for another equally so. May all you members of Kappa Kappa Gamma, whom the last Key with its photographs brought so much nearer to us, have for the coming year happiness and prosperity unlimited.

Edith Butler.



### Omega—Kansas State University.

During the second week in September eleven active girls and a number of alumnae met once more at our chapter house to discuss plans for the coming year. Rushing lasted only a week, pledge day being decided upon by the Pan-Hellenic for the second Monday. We gave a breakfast at our house that morning and pledged ten new girls. Omega is very proud to introduce to you Neva Funk, Amy Merstetter, Nellie Russell, Lillian Trousdale, Marie Williams, Juliette Roff, Ida Neylon, Minta Schmitz, Lucy Wright and Bertha Kilworth.

One of our most enjoyable events this year was our initiation, held October 14. After the initiation we gave a banquet, at which about forty-three Kappas were present. Miss Ruth Paxson was here at the time, and all Kappas know how glad we were to have her with us. One week after initiation we gave a dance to introduce our freshmen.

The new law building was dedicated November 3. It will be called Green Hall, in honor of the dean of the law school, Mr. James Green.

## The Key

We are looking forward with a great deal of pleasure to our Thanksgiving banquet, given by the Kansas City alumnae at the Elsmere Hotel for the girls of Theta and Omega.

Omega sends greetings to all chapters of Kappa Kappa Gamma.

Addie F. Lander.



### Beta Mu—Colorado State University.

Beta Mu is enjoying its new Kappa home. We moved into our new house on October 1. It is very conveniently situated, facing the campus, and commands a splendid view; besides, it is very well arranged. Our alumni and friends have given us several beautiful gifts. There are thirteen girls in the house.

Initiation was held October 13, and we have seven new Kappa girls to introduce to you, Isabelle Warner, Ethel Simpson, Helen Des Brisay, Naoma Pryor, Ethel Robins, Anna Affolter and Marie Gill. We have also a new pledge, Vara Shaver. Mrs. Jarmuth, Mrs. Matlock and Charlotte Powell came up from Denver for initiation. Mrs. Greenlee of Denver visited us later.

We were very fortunate in having with us during the Y. W. C. A. convention Miss Ruth Paxson. Beth Babcock of Trinidad, and Ethel Stewart of Pueblo have been up to visit us. Grace Pollard is here from Pueblo. Cora Nicolson has gone to Kansas City to spend the winter. Mrs. Allin and her little son Arthur, from Toronto, are spending the winter here. Mrs. Allin is one of our charter members. During Dr. Allin's life he was the head of the psychology department in this university.

Rebecca Kesner.



### Beta Xi—Texas State University.

Beta Xi has just initiated eleven freshmen girls, Dora Thornton, Margaret Runge, Anne Ruggles, Florence West, Annie Brown, Mamie Searcy, Annie McCormick, Mary Stephens, Bernice Allen, Annabel Irion and Hattie Parks. Hitherto, we



have had few girls living in town, while the Pi Beta Phis, who started with a town club, are numerous here. This year, however, four Austin girls came to us, even when most of their home friends were Pi Beta Phis. Now we consider that we have gained quite a hold, for we have eight Kappas here, counting Mrs. Budley Fisher, nee Lucile Wathen, who has just married and come here to live.

This year our Pan-Hellenic Association decided on a four weeks' rushing season, and the arrangement proved quite successful for us. The rushing was rather violent, however, and the faculty is taking some steps toward making some new arrangement. It has been suggested that either there be rushing and pledging immediately, with no specified pledge day, or that pledge day be set for the last of the year, probably in May, with no rushing at all. If the latter plan could be well carried out it seems to us to be an ideal arrangement. In this way we could look forward to a year undisturbed by rushing, and to merely choosing the girls we want for Kappas at the end of the year. Thus, violent rushing would be avoided and no mistake could possibly be made on either side.

Socially, these first two months have been very pleasant for us here at the University of Texas. Many things have happened to make this last term diversified with hard study and pleasures. Among other things, the Kappas gave an auction party, annual trolley party and a dance to the freshmen. Before the freshmen were initiated, one of the pledges, Dora Thornton, gave a charming little luncheon to her sister pledges. Just at present we are on the eve of gay Thanksgiving, with its football game and german.

Maie Phila Borden.



### Beta Omicron—Culane University.

Beta Omicron is once more hard at work, and Kappa Kappa Gamma is gaining honors daily. Adele Monroe was elected president of the sophomore class, and Hilda Phelps president of the freshman class. Ruth Bush is captain of the sophomore basketball team, and Gertrude Monroe has been chosen president of the art department team.

## The Key

The fact that Newcomb did not open until November 2, owing to quarantine, has put back our rushing season. We have just begun to rush, and our answering day does not come until December 8, so that Beta Omicron is not yet able to report on the result of this year's efforts. However, on November 8 we initiated Hilda Phelps, a freshman, who was pledged to us before we even had any definite hope of obtaining a charter. She has been loyal to us through all these years, and in ushering her into the world of Kappa Kappa Gamma we feel that the fraternity has gained a member of more than average value. Before very long we hope to have several new initiates. Rushing season is very strenuous this year, but we are enjoying it thoroughly. Beta Omicron wishes that her Northern sisters could be with her now, enjoying the sunny days of our Southern Indian summer. Out-of-door festivities are the most popular just now, and we are enjoying picnics and drives and all manner of open-air parties.

We hope before next convention to have visits from many Kappa Kappa Gammas. During the fall months our girls have met many fraternity sisters in New York, Chicago, everywhere, and one of our girls met a Kappa on the shores of Loch Lomond when she was abroad. Especially helpful are those girls who were in Chicago at the time of Grand Council session, and had the inspiration of meeting and knowing our national officers.

Beta Omicron sends greetings to all.

Mary Minor.



### Pi—University of California.

As the all important topic this term in every chapter is "the freshmen," Pi wishes to extend to all Kappa freshmen greetings and the heartiest of welcomes.

Our pledge day was set for three weeks after registration day, and although we worked unusually hard during that time we felt more than rewarded when we initiated, on September 23, eight happy and already loyal freshmen. We want you all to know Martha Chickering, Mary Baker, Alice Paine, Marjorie Coogan, Marie Carter, Margaret Sherman, Edna



Whitney and Ynez de la Cuesta. The initiation was the same splendid reunion of Kappas from far and near, and we were so happy to have with us Jessie Robinson, *Beta Beta*, Mrs. Pinger, *Beta Nu*, Miss Macaulay, *Beta Delta*, and Lucille Carr, *Mu*. Lucille Carr was affiliated with *Pi* shortly after initiation.

On September 28 a great sadness came to Kappa Kappa Gamma by the death of one of her most loyal members, Alice Humphreys. The place of one so beautiful in character, so pure and so good can never be filled. By her death *Pi* lost one of her truest and most earnest workers, and Kappa Kappa Gamma one of her dearest and most loyal sisters.

On November 11 the intercollegiate football game between Stanford and California was held on Stanford gridiron. Almost every girl of *Pi* chapter went down, and although we lost the game our visit with *Beta Eta* was a very enjoyable one. *Pi* has not stopped studying the October Key. Being so far from most of the chapters the pictures are of unusual interest to us.

*Pi* sends Christmas greetings and best wishes for a bright and happy New Year to all.

Mary R. Blossom.



## Beta Eta—Leland Stanford, Jr., University.

Rushing was comparatively easy this year owing to the stringent rules of Pan-Hellenic, which greatly simplified rushing parties and limited the time spent with freshmen. When we thought of the previous strenuous rushing seasons we were rather inclined to doubt the outcome of all these rules, but if *Beta Eta*'s success has proven their worth they are indeed a boon, for with much less effort and worry than usual we have won four fine new members, Hazel Maddox, Carol Larkins, Miriam Harris and Evelyn Sherrard. These, with Bertha Shidler, *Sigma*, and Hilda Broderson, *Beta Zeta*, gave us a chapter of nineteen, the largest number *Beta Eta* has ever known. At our initiation we were fortunate in having present Miss Virginia Sinclair, who impressed upon the initiates far better than we could possibly have done, the meaning of Kappa

## The Key

Kappa Gamma, not only in this chapter, but in the fraternity at large.

On November 11 we christened the new "Stanford Field" by a hard fought contest with the University of California. This was the first 'varsity game ever played on our campus, so victory was more than ever dear to us, and unusual interest was aroused among all those interested in university affairs.

Beta Eta sends greetings to all and best wishes for prosperity in the coming new year.

Edith M. Cory.



### Beta Pi—University of Washington.

October 23 was pledge day at Washington. Invitations were given at 4 o'clock, and before 7 o'clock that evening eleven freshmen were wearing the two blues. Two weeks later we put a bow on the one other girl whom Beta Pi wanted for a Kappa. That was a day we shall never forget, for we cannot. Twenty-six of us dined together in the chapter house, but we were not all Kappas, or Kappa pledges, for there was one Alpha Phi among us, a girl who, away from her own fraternity, has been one of the most enthusiastic rushers Beta Pi has had.

At this season the freshmen are first in our hearts, and Beta Pi in sending greetings to each and every Kappa is also thinking of the freshmen, whether they be Kappas or Kappa pledges.

Maud McMicken.





---

## Obituary.

### Alice Humphreys.

Alice Humphreys died at San Francisco, California, September 28, 1905. She was initiated into Pi chapter in 1897 and was ever one of the most earnest and loyal members. Kappa Kappa Gamma mourns the loss of a sister so beautiful and true in character.

---

## Alumnae Association Letters.

### New York Alumnae Association.

The January meeting of the N. Y. A. A. will be in the form of a musicale at the home of Mrs. Guy M. Walker, 504 West 112th Street, on Saturday, January 26, at 3 o'clock.

The annual luncheon of the association will probably be held on Saturday, February 23.

The meeting on Saturday, March 30, will be held at the Beta Epsilon apartment, 501 West 120th Street, at 3 o'clock.

All Kappas in and about New York are cordially invited to all meetings of the New York Alumnae Association; and if Kappas, whose names are not on the register, will kindly send same with addresses, the secretary will appreciate it.

On Saturday, November 4, about twenty members of the association met and had luncheon together at Wanamaker's Tea Room, to meet the Grand Registrar, Miss Cleora Clark Wheeler.

Mrs. Guy T. Viskniskki.



### Cleveland Alumnae Association.

The beginning of another year finds an enthusiastic and growing alumnae association in Cleveland. Thirty-five Kappas are registered from fifteen chapters, and about twenty-five of these were present at the first monthly meeting and luncheon, which was held at the home of Mrs. Bulkeley on Ambler Heights. At these meetings an interesting series of chapter histories is being given and talks and discussions on questions of general fraternity interest are proving beneficial to the members.

The new members are Mrs. Worth M. Tippy, *Iota*, whose husband is pastor of Epworth Memorial Church; Miss Mildred Honecker, ex-'06, Miss Edith Edmiston, ex-'08, and Mrs. Bertram Stephenson, '05, *Beta Delta*; Miss Elizabeth



Claypool, *Beta Nu*; Mrs. J. A. Barnes, *Psi*; Mrs. Lorenzo Dodge, *Beta Gamma*; Miss Edna Greene, *Beta Tau*; and Mrs. Drum, *Rho*.

Mrs. Bertram Stephenson.

The following is the program of the Cleveland Alumnae Association for the year beginning October, 1905:

## OCTOBER 3

Election of Officers.

Hostess ..... Mrs. Pennock

## NOVEMBER 7

Luncheon.

Hostess ..... Mrs. Bulkeley

Chapter Histories—

Xi ..... Mrs. Paulin

Beta Nu ..... Mrs. Minnshall

Omicron ..... Mrs. Van Sittert

Beta Delta ..... Mrs. Spaulding

## DECEMBER 5

Luncheon.

Hostess ..... Mrs. Dalglish

Subject, "The Needs of Social Service," ..... Mrs. Smart  
Mrs. Dalglish

## JANUARY 9

Social Meeting.

Hostess ..... Mrs. Spaulding

Committee..... Mrs. Spaulding, Mrs. Smart, Mrs. Bruce

## FEBRUARY 6

Hostess ..... Mrs. Clarke

Subject, "Kindergartens of Cleveland.... Miss McKinney

Chapter Histories—

Lambda ..... Mrs. Clarke

Gamma Rho ..... Miss Davis

Omega ..... Miss Patterson

Beta Gamma ..... Mrs. Dalglish

## MARCH 6

Hostess ..... Miss Twiss

Subject, "Kappa Policy," ..... Mrs. Johnson

Chapter Histories—

Alpha ..... Mrs. Bulkeley

Psi ..... Mrs. Barnes

Phi ..... Miss Penfield

Iota ..... Miss McCurdy

## The Key

### APRIL 3

Hostess.....Mrs. Van Sittert  
 Subject, "The Work of the Y. W. C. A."....Miss Penfield

### MAY 1

Hostess .....Mrs. Barrett  
 Subject, "Manual Training in the Public Schools,"  
Miss Dever

### JUNE 5

#### Cards.

Hostess .....Mrs. Mack  
 Luncheon promptly at one o'clock  
 Afternoon Meetings at two o'clock



### Chicago Alumnae Association.

On October 13, at the Victoria Hotel, the Chicago Alumnae Association held a banquet in honor of the thirty-fifth birthday of Kappa Kappa Gamma. More than fifty Kappas were present, and in answer to the roll-call by chapters, at least one member from almost every one of our thirty-two chapters responded. Beta Lambda, however, was the banner chapter, with seven members. It was a glorious gathering of Kappas from the four corners of the country. Because the annual council session had been held in Chicago that week, all of the Grand Officers were present, and, as somebody expressed it, "This is convention on a small scale." After the banquet seven or eight Kappas were called upon by Mrs. Otsstott, the toastmistress, for impromptu toasts. Then came the farewells, and we departed, everyone hoping to soon have the privilege of meeting again in an equally enjoyable manner.

Wasn't that a jolly luncheon at Field's on November 25 last? Aren't you glad you were there? There were twenty-five there, and then some—for they came in laughing installments, with their arms full of Christmas shopping bundles, and each little key conspicuously displayed. Mrs. Otsstott presided genially, as usual, at the head of the table, supported by Louise Merrill, and by the pretty bride, Mrs. Adcott, who is a recent acquisition to Chicago, as is also Emily Nichols, *Beta Lambda*. At the "other head" of the table,



Polly Little marshaled the Upsilon forces, and a happy, interesting lot of Evanston girls they were—some eight in all. Mrs. Jones gave dignity to her side of the table, and Martha Moses tried to give ballast to the other side, but we all talked at once, the great Chicago-Michigan game and Bernhardt dividing honors as topics, with fraternity questions and "Who shall be our next Grand President?" It is almost as hard to decide this as to guess who could possibly succeed our revered and beloved "Teddy R." Several subscriptions to the Key were taken, and financial matters nicely settled, so that we feel we can stand an insurance investigation any day. Can you match that, New York?

Marion T. Smith, *Beta Nu.*



## Alumnae Personals.

### Beta Epsilon.

Dorothy Canfield spent the summer of 1905 in Norway and France. Her football story in Everybody's for November has attracted a great deal of favorable comment, and her writings are eagerly looked for by readers of the Outlook, the American Illustrated Magazine and other discerning periodicals.



### Psi.

Margaret Rolston Fletcher, '06, who had intended to live in Ithaca this winter, has gone to Michigan, where Professor Fletcher has been called to the Agricultural College.

Mary Merritt Crawford, '04, is in the New York Medical College this winter.

Edna Francis Heustis, '05, is spending the winter in New York, studying painting.

Nora Stanton Blatch, C. E. '05, is in New York City with the American Bridge Company.



### Beta Tau.

Married—August 30, 1905, Maud Evelyn Andruss to Mr. William Watts Macon, Cornell. At home, Brooklyn, N. Y.

Married—September 7, 1905, Ruth Castner Voorhees to Dr. Alfred Warren Armstrong, Syracuse. At home, Canandaigua, N. Y.



### Beta Iota.

The engagement has been announced of Eliza Walker McFarland, '05, to Mr. J. Aubrey Anderson, of the Law School of the University of Pennsylvania.



Married—October, 1905, Hallie G. Hulbert to James Douglas. The wedding was truly a Kappa wedding, as the bridesmaids were Kappas and the whole active chapter and many of the alumnae of Beta Iota were present at the ceremony.



### Lambda.

Mrs. Herbert S. Mallory (Elmie Warner) is spending the holidays with her family at Chardon, Ohio.



### Beta Gamma.

Married—October 7, 1905, Jane Irwin Glenn to Mr. John Emery in the memorial chapel.



### Iota.

Lucia Hurst, '04, is teaching school at Bryan, Ohio.

Mrs. Annie Payne Ader has moved to Chicago. Her present address is 1438 Lawrence Avenue.

Married—August, 1905, Agnes Howard Root, '02, to Mr. Albert Butler, *Phi Kappa Psi*, Northwestern University, at the home of the bride in Evanston, Ill.

Miss Minette Taylor has gone on a lecture tour throughout the West.

Born, to Mr. and Mrs. Will Luther (Mary Sherfey), Brazil, Ind., a daughter, Lois Helen.

Born, to Mr. and Mrs. Charles Preston (Dora Lloyd), Greencastle, Ind., a daughter, Helen Elizabeth.

Born, to Mr. and Mrs. Harmon Bradshaw (Elizabeth Mahan), a daughter.

Mr. and Mrs. Claude Watts (Marie Van Riper) have moved from Cincinnati to Washington, D. C.

Miss Elizabeth Sherfey has just returned from an extended trip throughout the West.

Married—Mildred M. Bishop to Mr. Isaac Springer, *Phi Kappa Psi*, Northwestern University. At home, Chicago, Ill.

## The Key

Married—Ethel Cress, '02, to Dr. Morrow, at her home in Washington, Ill.



### Kappa.

Married—September 27, 1905, Daisy Prideaux to Mr. Frank W. Cook. At home, Albuquerque, New Mexico.

Married—October 10, 1905. Claire Sands, '96, to Mr. Chauncey L. Newcomer, *Delta Tau Delta*. At home, Bryan, Ohio.



### Beta Lambda.

Emily Nichols, '05, has been appointed assistant in the library of Armour Institute of Technology at Chicago.



### Epsilon.

Born, to Mrs. Josephine Van Leer Jones, May 24, 1905, a baby girl, Leonoir.

Bessie Cash is teaching school in Towanda, Illinois.

Carrie Atkinson, '04, is assistant principal in the high school at Lexington, Illinois.

Elizabeth Roe, '05, is assistant principal in the high school at Morning Glen, Iowa.

Julia Holder, '05, is spending the winter in New York City.



### Chi.

Mary Morgan, Marguerite Morgan, and Louie Morgan are now living at Fort Riley, Kansas.

Helen Patterson, '05, is visiting the Morgans at Fort Riley.

Grace Gillette, ex-'06, is in Minneapolis this winter. She has been at Wells College for the past two years.

The engagement of Isabelle Hills, ex-'07, to Malcolm Curry of New York is announced.



The engagement of Gertrude Satterlee, ex-'08, to Howard Yerxa, is announced.

Harriet Brearley, ex-'07, is again in college after an absence of a year and a half.

Flora Edwards, '03, is spending the winter with her uncle, Dr. Jordan, at Leland Stanford.

Polly Bullard has returned from a seven months' trip abroad.

The engagement of Flora Edwards and Seavey Bailey is announced.



### Beta Zeta.

Married—November 30, 1905, Margaret Buddington to Mr. Harry Plum.



### Sigma.

In response to continued anxious inquiries, Mrs. Daniel D. Otstott, of Chicago, makes the welcome announcement that her husband is now quite recovered from all effects of the railroad accident of last May at Harrisburg, Pa., in which he was injured.

Eunice de Steigneur is attending Miss Chamberlayne's school at Boston.

Claire Funke recently spent a few days with Beta Nu.

Vera Lewis, *Beta Mu*, visited Sigma chapter for a day or two at the time of the Colorado-Nebraska football game...

Mrs. McLaughlin (Marie Morris, *Omega*), came with Mr. Morris to see the Colorado-Nebraska game, and made Sigma a delightful visit.

Miss Paxson was with Sigma for ten days during the first part of November.

Ruth Wilson is assistant principal at Culbertson, Nebraska.

Ruth Wyer, who was initiated last year, is spending a month with Sigma on her way to California.

Elva Sly, '03, is principal of the high school at West Point, Nebraska.

## The Key

Mrs. McLucas (Cora Cropsey), of Fairbury, was in Lincoln for a few days recently, the guest of Margaret Whedon. Lucy Van Horne is teaching in the Pawnee schools.

Blanche Hargreaves is still with her sister, Louise Hargreaves Stein, in Springfield, Ohio.



### Beta Eta.

Born, to Mr. and Mrs. Joseph Adams Miller (Ida Henzel, '04), a daughter.

Born, to Dr. and Mrs. Roy Woolsey (Zoe Larkins, '03), a son.

The engagement of Elizabeth Voris, '05, to Mr. George V. Lawry, *Zeta Psi*, Stanford, ex-'04, is announced.





## Exchanges and Fraternity Notes.

Marion C. Smith—Beta Nu, '97.

Some time ago we quoted certain remarks, in a brother exchange, anent the vexed question of transfers. The tone of the article was, as we pointed out, somewhat unbrotherly, and we rejoiced within us that Kappas are wont to treat the matter with more loyalty, courage and sweet temper. After all, it is only womanliness and common sense that are needed. If we are loyal women we will manage to assimilate gracefully all that sister Kappas send us, whether "just our kind" or not, and if we use common sense we will see that, as Pi Beta Phi suggests, this assimilation is no more difficult than is our yearly adaptation to the comparatively strange freshmen we take in, and to those "forbears" and descendants of our own chapter whom we personally did not choose. The "Arrow" hits the mark (as it generally does) in the following:

Probably most chapters are, at one time or another, confronted with the question of the transfer, an individual innocent in herself, but occasionally furnishing one of the most perplexing problems of fraternity life. Fortunately she is often just the girl the chapter would have chosen, and fits into her new surroundings with the adaptability of a congenial spirit. Once in a while, however, the process of assimilation is not so easy, either because of some peculiarity in the character of the girl or because of differences in her former surroundings. Of the former class it is not necessary to say much. The selfish transfer, the stiff-necked and obstinate transfer, the transfer with the unmanageable temper, probably never ought to have been initiated in the first place. Any chapter is the worse for her, and a chapter that passes her on to another college is alone responsible for any trouble that may come of it. Happily such transfers are rare, for the friction of fraternity life has already smoothed off the roughest angles.

The usual difficulty is not the result of character but of previous environment. The girl who goes from one college to another is often the product of different conditions, social and intellectual; her college is perhaps of a different standard, while her habits, her views

of life, her whole make-up are such as would draw her, if still uninitiated, into some other fraternity or no fraternity at all.

But how will the transfer feel when you reject him and receive one from another college into full fellowship, and how will such discrimination look to the college world outside? Will it not imply something against the character of the one rejected, and, since he is a newcomer, work him actual harm? Worst of all, will not such a course lower fraternities and the fraternal idea in the eyes of that same college world?

Each year the chapter cheerfully undertakes to incorporate into itself the half dozen or so freshmen whom it has initiated. Considering their immaturity and the frequently hasty rushing, this is fully as difficult a task as assimilating an occasional transfer. We may argue that we choose the freshmen ourselves, whereas we had nothing to do with selecting the transfer. But then, neither did we select our alumnae, nor shall we select the freshmen who are to come after us.

A girl's presence in college argues that she is ready to accommodate herself so far as possible to its atmosphere, her presentation of a letter of transfer is pledge of her willingness to meet the chapter at least half way. Should she prove a girl who falls below our standard of breeding or culture, there is still left a common meeting ground, for down below such superficial differences are certain womanly attributes which we may take for granted belong to every fraternity girl. Perhaps it is not a bad thing once in a while to sweep aside the comparatively nonessential, and found our mutual friendship on such basic qualities as sincerity, honor and high aspiration.

A national organization gives to a fraternity strength, solidity, unity; it gives prestige to the chapter or individual belonging to it. We boast of our national standing, are proud of our strong chapters, and feel a proprietary interest in the achievements of successful alumnae. Shall we take to ourselves all the strength of a strong national organization and not accept the one small evil—the affiliation of an occasional undesirable transfer? Caution in granting charters, and the frequent and careful inspection of chapters reduces even this danger to a minimum, and at the very worst, we at least have our pin and our pledges in common. Sisterhood *de convenance* is not the ideal bond, but in the case of the transfer, it is certainly better than no sisterhood at all.—*Pi Beta Phi Arrow*.

The sort of loyalty that should govern our actions is well defined in a toast given at a recent banquet:

Let us lay hold of work. But what work shall we set ourselves to do? This is the question which confronts each of us to-night, and in summing up we reach the same result, the *upbuilding of our chapter*. The only way of accomplishing this is in the choosing of our brothers. Let us be slow in our choice, but having once chosen them, let us



pray that neither life nor death, misunderstanding, distance nor doubt may ever come between us to vex our peace. Let us be true to our brothers and then believe that they are and ever will be true to us. It is a great and solemn thing to say to another human soul, in this one life that we have to live, we will share all things temporal and spiritual; your joys shall be our joys, your sorrows our sorrows, your disgrace our shame. In absence you shall yet be near. Though land and sea divide us you shall yet walk by my side and kneel with me in prayer; still I shall feel the touch of your hand and rejoice in your sympathy; your letters shall make me strong and glad. I am not afraid of you. With you I need not be too greatly reserved. To you I may speak the deep thoughts of my heart. With you alone I laugh; with you only may I shed tears and be not ashamed. To you only can I say, Behold, here am I, an undisguised human soul; all others know me in some one mood, you know me in all moods.—*Phi Gamma Delta*.

This may sound a trifle sentimental, I grant, but it is nevertheless the biggest and most important thing about our fraternity after all—crystal sincerity, perfect loyalty.

\* \* \* \* \*

Rather the best poem that has appeared, is the following, which should commend itself to the Song Book editor, because of its "singableness" and sincerity:

## A Beta Song.

By Mounce Byrd, Psi '05.

O sing me a bit of a Beta song,  
For fellowship and cheer,  
No other music rings so long  
In a Beta's heart and ear,  
For the words are brave, and the words are true,  
And the air won't drag along;  
Go find a Beta boy or two,  
To sing a Beta song.

The stormy opera passes by,  
The master's band is gone,  
The mighty strains grow dim and die,  
We lose them one by one;  
But change may come, and years take wing,  
Till we be silver grays;  
And still the Beta boys can sing  
The songs of Beta days.

As to corresponding secretaries, *Beta Theta Pi* has this to say:

They disregard all sorts of rules and regulations, but their hearts are right and their intentions good, and we could not do without them. Don't write when you have nothing to say, but don't assume that you have nothing to say because what you must say seems so ordinary and usual and trivial. We do not know what you know about your chapter. But do not tell us football news that will be stale long before we can print it, and don't write "frat" and "school" when you mean or ought to mean "fraternity" and "college." A man who will write "frat" usually wears "pants" and refers to his male companions as "us gents." If you will be correct in your style so far as those two words are concerned, we will forgive almost anything.

\* \* \* \* \*

Alpha Phi in the November *Quarterly* gives the answers from many chapters to the question of the advisability of intercollegiate athletic contests for women. The answers are overwhelmingly negative. In some colleges it has been attempted, but unsuccessfully; in most, there is no desire to try it. The conclusion of the "Round Table" may be summed up as follows: Intercollegiate athletic contests for women are inadvisable, because:

I. The rivalry and "journeyings" necessary are not conducive to the highest type of womanliness.

II. Sufficient spirit is developed in class games to stimulate zest for athletics.

III. Women prefer cheering their brothers on to entering contests themselves.

IV. It is too great a tax on a girl's strength and nervous vitality to go into strict training.

V. They haven't time.

\* \* \* \* \*

Δ Γ—Delta Gamma, having entered Illinois, now embraces seventeen chapters.

K Α Θ—The Toronto chapter of Kappa Alpha Theta was re-established on July 3, 1905.

Γ Φ Β—Gamma Phi Beta has given two successive professors of English literature to Ohio Wesleyan University.

K Σ—Kappa Sigma's latest—Dartmouth and New York University; total, 71.



Α Χ Δ—Alpha Xi Delta has a new chapter at the University of West Virginia.

Δ Τ Δ—Delta Tau Delta put in a chapter at the University of Missouri last summer.

Δ Τ—William Travers Jerome, of New York election fame, is a prominent member of Delta Upsilon. He comes from the Amherst chapter.

Β Θ Π—John M. Pattison (Ohio Wesleyan, '69), the newly elected governor of Ohio, is a member of Beta Theta Pi.

Δ Κ Ε—The Grand Jury failed to return indictments against any members of the Kenyon chapter of Delta Kappa Epsilon, involving them in responsibility of the death of their pledge, Mr. Pierson, who was killed on the night he was to have been initiated. Great publicity was given to the bitter suspicions and insinuations of the county officials against the fraternity, but the notice of the final outcome, in its favor, was a small and inconspicuous one. Of such are the children of the Press!

Σ Ν—Sigma Nu proposes to print six numbers of the *Delta* this year, instead of four. A new song-book is promised for January. The latest chapter installed was at Montana.



## Conventions.

Δ Τ—Delta Upsilon convened on October 26, at Utica, N. Y.

Β Θ Π—Beta Theta Pi convened in New York City during the second week of last July. About a thousand members were present, some eight hundred being New Yorkers. A charter was granted to Iowa State, and Denver was chosen as the place for convention in 1906.

Κ Α—Kappa Alpha had their 1905 convention at Asheville, N. C. Fine success of the *Journal* was reported, with an increase of 600 since last convention, earnings tripled and net cost less than ever before. A memorial ball at Washington and Lee University is being planned and with it goes a Kappa Alpha scholarship.

Φ Γ Δ—Phi Gamma Delta held its Ekklesia at Niagara Falls in July.

\* \* \* \* \*

Cornell still stands at the front as the supremely Greek letter university, being the home of twenty-two chapters. Michigan and California contest second place with nineteen apiece. Columbia, Lehigh and Pennsylvania are similarly tied with eighteen chapters each. Minnesota has seventeen, and Wisconsin, Stanford and Chicago have fifteen each.

Beta Theta Pi.





# Index to Volume XXII

of Key of

## Kappa Kappa Gamma.

January-October, 1905.

ADELPHI COLLEGE, <i>Elizabeth Rhodes, Psi</i> .....	417
ALUMNAE ASSOCIATION LETTERS.....	375
BETA PI, INSTALLATION OF, <i>Virginia Sinclair</i> .....	359
BETA SIGMA, INSTALLATION OF, <i>Elizabeth Rhodes</i> .....	413
CHAPTER LETTERS.....	311, 386, 512
CHAPTER PHOTOGRAPHS.....	540
EDITORIAL.....	290, 372, 426, 507
EXCHANGES.....	346, 407, 482
FRATERNITIES, <i>James H. Canfield</i> .....	267
FRATERNITIES AND SORORITY TORTS, <i>President E. Benjamin Andrews</i> .....	489
FRATERNITY HISTORY, THE, <i>Mary C. W. Westermann</i> .....	280
FRATERNITY IDEALS, <i>Caroline Lexow</i> .....	277
FRESHMAN SONG, <i>Ruth Wyer</i> .....	281
GRAND PRESIDENT'S MESSAGE, <i>Elmie Warner Mallory, Grand President</i> .....	497
INTERSORORITY CONFERENCE, FOURTH, <i>Cleora Clark Wheeler</i> .....	494
KAPPA FAIRY TALE, <i>Nell Malloy</i> .....	288
MESSAGE TO THE ALUMNAE, <i>Elmie Warner</i> .....	281
MODERN COLLEGE LIFE, <i>Louise Pound</i> .....	272
OBITUARY, 1904.....	476, 534
(Madge Robertson, Eva G. Williams, Nettie L. Killion, Evelyn Osborn, Minnie L. Weeks, Anne Jones.)	
PARTHENON:	
After Initiation, <i>Maude Olander</i> .....	300
Alumna's Message, <i>Harriet Harding</i> .....	307
Basis of it All, <i>M. Louise Dyer, Phi</i> .....	506
Binding the Key, <i>Maude McMicken, Beta Pi</i> .....	505
Co-operation with the Faculty, <i>Mary Minor, Beta Omicron</i> .....	503
Essential Dignity in "Rushing," <i>Beth Hughson, Beta Eta</i> .....	423
Fraternity in College Politics, <i>Celia D. Shelton</i> .....	368
Fraternity Regulations at Wooster, <i>Margaret Taggart, Beta Gamma</i> ....	501
Girl Outside the Chapter House, <i>Persis Martin</i> .....	305
Grand Registrar, Greeting from, <i>Cleora Wheeler</i> .....	298

Grip, Our, <i>E. B. W.</i> .....	309
High School Sorority, <i>Mary F. Hunt, Beta Nu.</i> .....	421
Ideal Fraternity Girl, <i>Gladys Meyer, Pi.</i> .....	504
Individuality, <i>Emma J. Wilson.</i> .....	367
Kappa Deserves Our Best, <i>Rebecca Kesner.</i> .....	299
Kappa Dignity, <i>Elsie Naylor, Iota.</i> .....	423
Kappa Friendship, <i>Julia Hillis.</i> .....	368
Mutual Helpfulness, <i>Fannie Northrup.</i> .....	303
Narrow or Broad? <i>Lucile Carr.</i> .....	366
Obligations of the "Private," <i>Berenice W. Vance, Theta.</i> .....	499
Optimism in "Rushing," <i>Josephine Paddock.</i> .....	369
Old Members and New, <i>A. L. Walsh.</i> .....	302
Older Girls' Duty Toward Freshmen, <i>E. R. Parker.</i> .....	301
Our "Freshmen," <i>Hally M. Pŕentis.</i> .....	300
Pan-Hellenic Bond, <i>Helen McClintock, Gamma Rho.</i> .....	500
Pan-Hellenic Rules and Freshmen, <i>Beta Iota.</i> .....	303
Pan-Hellenism at Michigan, <i>Sophie St. Clair, Beta Delta.</i> .....	420
Pan-Hellenism at Northwestern, <i>Ella Bradley, Upsilon.</i> .....	502
Personal Opinion vs. the Chapter's, <i>Lucie Mayo-Smith.</i> .....	310
Plea for Breadth, <i>Martha E. Dodson.</i> .....	308
Profitable Pastime, <i>Marian R. Blethen, Beta Pi.</i> .....	422
Real Question, <i>Addie F. Lander.</i> .....	367
Relation of Active Chapter to Alumnae, <i>Alice Remley.</i> .....	306
"Rushing," Evil of, <i>H. E. McClintock.</i> .....	305
"Rushing," Problem of, <i>J. L. Reed.</i> .....	304
Settlement Work, <i>Josephine Reed.</i> .....	370
Spirit of Convention, <i>M. C. W. Westermann.</i> .....	208
Spirit Serene, <i>Mu.</i> .....	299
Vacation Reflections, <i>Edith Cold, Kappa.</i> .....	498
What is the Aim of Your Chapter? <i>Addie F. Lander, Omega.</i> .....	499
PERSONALS, ALUMNAE.....	336, 404, 477, 535
PUBLIC ANNUAL REPORTS, 1904.....	428
SENTIMENTALISM IN FRATERNITY LIFE, <i>Sigma.</i> .....	491
SOCIAL SERVICE, PRACTICAL SUGGESTIONS ON, <i>J. N. Penfield.</i> .....	283
TO THE FLEUR-DE-LIS, <i>Ruth B. Ebright.</i> .....	276
VERSES, <i>Elva Sly, Sigma.</i> .....	425
VERSES, <i>Helen Gallup, Chi.</i> .....	419
WASHINGTON, UNIVERSITY OF, <i>Herbert D. Condon.</i> .....	363







# Wright, Kay & Co.

DETROIT, MICH.



JEWELERS TO  
KAPPA KAPPA GAMMA



We take pleasure in announcing our appointment as  
Official Jewelers to Kappa Kappa Gamma Fraternity

OUR SPECIALTY . . .

is extra fine pearl goods

SAMPLES . . .

will be sent upon application

---

WILLIAM J. DAVIS

CHARLES I. CLEGG

## DAVIS & CLEGG

*Silversmiths and Fraternity Jewelers*

*Importers of Hall Clocks*

616 Chestnut Street - Philadelphia

*Specialists in*

FRATERNITY

Badges  
Rings  
Charms  
Fobs  
Novelties

COLLEGE

Pins  
Rings  
Charms  
Fobs  
Seals

S h r e v e & C o m p a n y  
P o s t a n d M a r k e t S t r e e t s  
S a n F r a n c i s c o  
C a l i f o r n i a

J e w e l e r s  
S i l v e r s m i t h s

C h i n e s e J a d e J e w e l r y  
I n d i a n A r r o w p o i n t J e w e l r y  
R e f i n e d , O r i g i n a l a n d  
E s s e n t i a l l y " S h r e v e ' s "

J. F. NEWMAN,

BADGE AND JEWELRY MANUFACTURER  
OFFICIAL FRATERNITY JEWELER.



## Removal Notice.

May 1, 1903, we left our old office, 19 John Street, where we had been located for twenty-five years, to enter larger and more attractive quarters, better adapted to our extended business, at

No. 11 JOHN STREET, NEW YORK.



# *Auld Standard Badges*

Write for

New Illustrated Catalogues of Badges, Novelties  
and Stationery

---

**D. L. AULD**

195-197 E. Long Street - Columbus, O.

*Official Jeweler to Kappa Kappa Gamma*

---



## **OMO DRESS SHIELDS**

Absolutely Odorless      Absolutely Impervious  
Contain no Rubber  
Every Pair Guaranteed to Wearer  
Send 25 Cents for Sample Pair

**THE OMO MFG. CO., Middletown, Conn.**

Fraternity Pins and  
Novelties  
Send for Illustrations

Diamonds  
Watches  
Jewelry

1820

1906

## *Indiana University*

**BLOOMINGTON**

Co-educational since 1867.

Fifteen hundred students.


Seventy-one members of faculty.

For Catalogue or special announcements address

THE REGISTRAR, or

WILLIAM LOWE BRYAN,

President.

Have you a 

## SONG BOOK

OF

### Kappa Kappa Gamma?

New Edition with Music, \$1.25.

*Kappa Handbook, 25 Cents*

Send orders to

MRS. GUY WALKER,

504 W. 112th Street

- New York City.

## Baird's Manual

of

AMERICAN
COLLEGE
FRATERNITIES

New and Sixth (1905) Edition now ready

This Book is replete with information of interest to all members of College Fraternities. It contains Histories of each of the Men's General Fraternities, the Women's General Societies, the Men's Local Fraternities, Women's Local Societies, Professional Fraternities, Honorary Fraternities and Miscellaneous Societies; a Directory of Colleges and Chapters, Statistical Tables of great interest, articles showing the geographical distribution of Chapters, Nomenclature, Insignia, a Complete Bibliography of Fraternity publications, information concerning Chapter House ownership. In short, the Sixth Edition is a complete Cyclopaedia of Fraternity Information. It is bound in befitting covers of blue, white and gold, and will be sold at \$2.00 per copy, postage prepaid.

*Send in your orders through this office*





