

# The Key

A KAPPA KAPPA GAMMA PUBLICATION

VOLUME 129, No.2  
SUMMER 2012

*In the race to achieve your dreams,  
there is NO SPEED LIMIT!*

*The Key* is the first college women's fraternity magazine, published continuously since 1882.

## EDITORIAL BOARD

Editor

**Kristin Johnson Styers**, *Georgia Southern*

Associate Editor

**Lois Catherman Heenehan**, *Adelphi*

Alumna News/Profiles Editor

**Ann Graham Schnaedter**, *Missouri*

Collegiate News Editor

**Christine Robertson**, *Syracuse*

Contributing Editor

**Melisse Campbell**, *Mississippi*

Arts and Letters Editor

**Julie Robison**, *Hillsdale*

Editorial Board Chairman

**Gay Chuba Barry**, *Penn State*

Fraternity Vice President

**Elizabeth Bailey**, *Mississippi*

---

Executive Director

**Kari Kittrell**

Director of Marketing and Communications

**Ashley Gilbert Moyer**, *Purdue*

Contributing Editor

**Jenny Struthers Hoover**, *Bowling Green*

---

Staff Photographer

**Claire Davis**, *Auburn*

Graphic Designer

**Victoria McDonald**, *Q.V. Design*

---

Printed by **The Watkins Printing Company**,  
Columbus, Ohio

*The Key* (ISSN 1063-4665) is published quarterly by Kappa Kappa Gamma Fraternity, 530 E. Town St., Columbus, OH 43215. Printed in the United States of America, copyright Kappa Kappa Gamma Fraternity 2012. Subscription price is \$3.

Preferred periodical postage paid  
at Columbus, Ohio

POSTMASTER:

Send address changes to

The Key

P.O. Box 38

Columbus, OH 43216-0038

# CONTENTS

## departments

### 2 President's Message

Surprise yourself by what you can accomplish when you dream big!

### 3 Fraternity News

Changes announced for the Rose McGill Magazine Agency; chapter colonization plans galore; Monmouth marks the site for Panhellenic spirit.

### 28 Foundation News

Meet Board of Trustees member **KAY SCHOLBERG WEEKS**; **KAREN NAYLOR** shares why she gives to the Kappa Foundation; small groups with big hearts give back to Kappa.

### 32 Accent on Alumnae

A Southern sweep of association events—**HOUSTON** hosts **JANE PAULEY**; **SARASOTA** struts its stuff with a fashion show; and **DAYTONA** steps back in time with a Joan Adams production.

### 48 Collegiate News

With the support of her chapter, an Alabama Kappa fulfills her dream of building a school in Zambia; Q&A with published poet **NINA BAHADUR**, *Princeton*, and tips for sending photos to *The Key*!

### In Memory of BETH SHARP, Penn State

This issue is dedicated to the memory of **BETH SHARP**, *Penn State*, former Chairman of *The Key* Editorial Board from 1996–1998 and most recently, Director of Programs and Education. Please read about Beth's contributions to GIRLS Academy in the President's message on Page 3. Let us, made richer by her memory, made stronger by her strength, now live to a nobler purpose.



## features

### Kappas Going for Gold

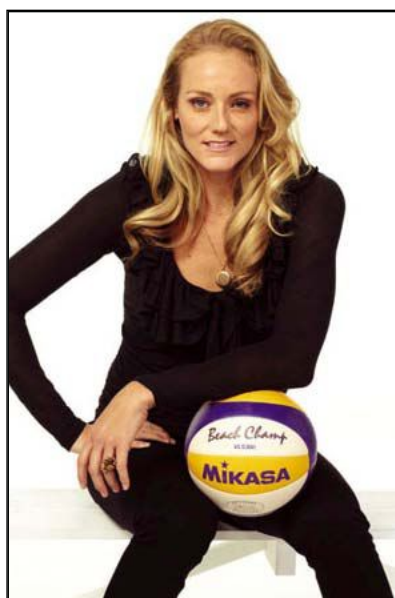
Her bike once served as a nice purse rack. Now **EVIE STEVENS**, *Dartmouth*, pushes herself and her bike to the limit at the Olympics.

For beach volleyball player **JEN KESSY**, *USC*, making the Olympic team is a lifelong dream fueled by discipline and determination.

**PAGE 16**



**EVIE STEVENS**, *Dartmouth*



**JEN KESSY**, *USC*

### A Health Champion

**EMILY SCHLICHTING**, *Nebraska*, was diagnosed with a rare disorder as a freshman college student. She tackled her health and the health care system while earning academic honors!

**PAGE 24**



*The Key* of Kappa Kappa Gamma links each member with the Fraternity. The mission of *The Key* is

- To inform, inspire and challenge
- To promote leadership, scholarship and friendship
- To sustain and nurture loyalty and interest
- To recognize the accomplishments of individuals, groups, the Fraternity and its Foundation
- To provide a forum for an exchange of information and opinion
- To be a permanent record.

### Kappa Kappa Gamma Headquarters

P.O. Box 38  
Columbus, OH 43216-0038

866-554-1870 (866-KKG-1870)  
Fax: 614-228-7809

Email Kappa: [kkghq@kkg.org](mailto:kkghq@kkg.org)

Email *The Key*: [thekey@kkg.org](mailto:thekey@kkg.org)

Upload photos to *The Key*:  
<http://uploads.kappa.org/>



[www.facebook.com/kappakappagamma](http://www.facebook.com/kappakappagamma)  
[www.facebook.com/TheKeyMagazine](http://www.facebook.com/TheKeyMagazine)



[www.twitter.com/kappakappagamma](http://www.twitter.com/kappakappagamma)



[www.linkedin.com](http://www.linkedin.com)  
Keyword: Kappa Kappa Gamma



<http://blog.kappa.org>

## president's message

Beth Sharp is surrounded by the 2009 Field Representatives in one of her many mentoring roles.

# First Dream, Then Challenge

**W**e sometimes surprise ourselves, when a tiny seed of an idea is born from just a friendly conversation, and grows into an accomplishment beyond our dreams.

In 2008, while at a Leadership Academy meeting at Kappa Kappa Gamma Headquarters in Columbus, Ohio, **JANET MEINHEIT**, *Wisconsin*, and longtime friend, **JULIE LOVE STONEHOUSE**, *UC San Diego*, talked about the issues plaguing their teenage daughters—body image, bullying, and how to live by your values. Janet says they dreamed of some sort of leadership program for middle-school girls. From that late-evening chat, **GIRLS Academy** was born.

But every grand idea needs a business plan. Julie and Janet took their idea to **BETH SHARP**, *Penn State*. It didn't take any convincing for Beth to embrace the idea. With her background in psychology, academic administration and her career as senior vice president of human resources with Aerosoles, Beth had become an expert in mentoring programs. She enthusiastically joined Janet and Julie in their cause, "because it is crucial to develop values behavior in the early years of girls' development," Beth said. As Kappas, Janet, Julie and Beth knew that sisterly support is the key to achieving your dreams. The next step was creating a program to teach those valuable principles to girls coming of age.

Because middle-school girls face tremendous pressure to fit in with society's standards of femininity, Janet says that we have to challenge the culture that tells girls what is important. **GIRLS Academy** stands for "Girls Inspiring Respect Leadership and Service." A leadership retreat tailored specifically for middle-school girls, it is an interactive program including small-group discussions, journaling and reflection, plus a community service project. Collegiate Kappas serve as role models for the girls and facilitate small-group



discussions, supervised by Kappa alumnae trained as education specialists.

By the 2010 Convention, **GIRLS Academy** was introduced and Janet and Julie reported on the pilot program, which took place in Concord, Calif., with help from the chapter at UC Berkeley. At this same Convention, Beth was elected to Fraternity Council as Director of Programs and Education, and she made the development of **GIRLS Academy** almost her singular purpose. Since then, there have been four more **GIRLS Academy** events: Boulder, Seattle, Minneapolis, and Chicago, with more in the works.

The response from **GIRLS Academy** has been overwhelmingly positive. As an organization, we are thrilled to be sharing the mentoring environment that naturally exists within Kappa with middle-school girls who are forming their values systems and evaluating who they will become.

Sadly, I also must share the news that Beth Sharp passed away this summer from pancreatic cancer. Beth, who meant so much to so many Kappas, attributed much of her success in life to the mentoring she received in Kappa. With all of her heart, she openly shared her knowledge with others, which is the cornerstone of Kappa and our new **GIRLS Academy** program. Beth's passion was helping women become leaders. We have all become better leaders for having known Beth. And now our daughters will, too.

Loyally,

**JULIE MARINE LESHAY**, *Colorado College*  
Fraternity President  
kkgpresident@my.kkg.org



# Changing With the Times

## The Rose McGill Magazine Agency Closes Its Doors

— By LOIS CATHERMAN HEENEHAN, *Adelphi*

History. Progress. Nostalgia. Tradition. Change. Adaptation.

Kappa Kappa Gamma has dealt with all of these effects and continues to do so through the years.

At the 1922 Convention, the delegate from BETA PSI CHAPTER, *Toronto*, told of the dire financial straits facing Beta Psi member ROSE MCGILL. Seriously ill, with no family to help her and no financial resources, the delegate asked if there was a Fraternity fund that could help. There was not, but each chapter at Convention pledged to give, and with the modest sum of \$600, a cherished Kappa fund began. The Rose McGill Fund aids any Kappa in need due to illness or misfortune and more.

The operation of the fund has changed through the years, as varied avenues of giving and fundraising developed. In 1933, the Kappa Magazine Agency was formed and members contributed through their purchases of magazines, with a percentage of the subscription price returned to the fund. For many years, the Rose McGill Fund received a good income this way. In 1982, the administration of the magazine agency was brought into Fraternity Headquarters and given into the capable hands of MARY ELLEN FIGGINS, *Ohio State*.


But things do change. The magazine industry has seen a decline. Fewer people subscribe to printed magazines, preferring to do their reading electronically. Fewer subscriptions means falling income. Change is needed; adaptation must be made.

After careful consideration, Fraternity Council regrets to announce that the Rose McGill Magazine Agency closed June 30, 2012. Magazines can still be ordered through the third-party vendor who has been handling Kappa's account. A link on [www.kappa.org](http://www.kappa.org) will direct members to the vendor to place orders. Kappa will continue to receive any royalties that are generated. We will miss the pleasant, welcoming voice of Mary Ellen

taking subscriptions by phone, but we hope to learn of her helping Kappa in another way.

What remains the same? **The Rose McGill Fund is NOT going away.** In a time when more members than ever find themselves in need, everyone is urged to contribute whatever they can manage to help others, as they, themselves, might someday need help. Circle Key and Undergraduate Emergency Grants will continue, as will the Holiday Sharing Program, bringing cheer and gifts to members and their families during the holiday season.

*The Key* will remain the same. It is not part of the magazine agency and will continue to come to you as long as your address is current in Fraternity files.

As Kappas, we treasure our traditions. We look fondly on things that have for so long meant so much to us and regret their passing into history. However, we are a vital, forward-looking organization of women who recognize the need to change, to adapt, to manage current and future needs for best results. Today's events and treasures are tomorrow's history. 

### Support Rose McGill

Kappa relies on the donations of members to fund confidential aid for members in need. Often, Kappas who receive Rose McGill aid have exhausted all other means or need assistance for items that are not covered by health insurance, such as medical devices or in-home assistance.

# Kappa's Colonization Plans

Since last spring, Kappa's extension team, working alongside Fraternity Council, has been busy creating plans for several new chapters to sustain the growth of the Fraternity. This map will help you see the campuses where chapters are sprouting.

## **Chapman University**

**Orange, Calif.**

**Colonizing: Spring 2013**

*Chapman's code of ethics, which emphasizes excellence, integrity, respect, diversity and service, complements Kappa's values, mission and purpose.*

## **California Polytechnic State University (Cal Poly)**

**San Luis Obispo, Calif.**

**Colonizing: Spring 2013**

*Community service, collaboration and unity are the strengths of Cal Poly. These attributes encourage students and the Greek community to provide service to their campus and outside communities and develop personal leadership skills.*





## Show Your Support!

Kappas can help with new chapters by providing recommendations for potential members or by volunteering time and support to these new Kappa chapters. Email [extension@kkg.org](mailto:extension@kkg.org) to get involved or get more information.

### NC State University

Raleigh, N.C.

**Colonizing: Fall 2016**

*Four pillars guide Greek life at NC State: sisterhood, scholarship, leadership, and service. Projecting steady growth, this campus Panhellenic has invited Kappa to colonize in 2016.*

### Mississippi State University

Starkville, Miss.

**Colonizing: Fall 2016**

*If this campus achieves the steady growth in membership recruitment numbers as projected, Kappa will form a chapter in 2016 on this campus, which has a history of scholarship and community service.*

*A mother-daughter Monmouth duo enjoy a*

# A Mother-Daughter Panhellenic

A recent letter by ANNA DOLBY ZAICH, UCLA, written to both *The Key* and *The Arrow* of Pi Beta Phi, spoke of a recent journey she and her Pi Phi daughter, Sylvia, made to Monmouth, Ill., birthplace of both fraternities. It was more than a journey to two historic homes held special by the two groups. It was the culmination of a journey in understanding the true Panhellenic experience.

Anna writes that when Sylvia entered Northwestern University in Evanston, Ill., four years ago, she encouraged her to go through Recruitment to make friends and also because her own experience in being in a sorority had enriched her life in college and the years after graduation.

Sylvia had grown up hearing stories of her mother's college memories, as well as those of her Kappa grandmother and her Kappa great-grandmother. It was at first bittersweet for Anna and her mother when Sylvia did not become a Kappa.


During the past four years, Anna began to see that Sylvia was enjoying similar experiences to which she had at GAMMA XI, UCLA. She saw Sylvia enjoying new friends, hanging out at the Pi Phi house, becoming an officer, learning new songs and traditions, and participating in philanthropy events. Anna says, "It soon didn't matter what Greek letters were attached to Sylvia's pin."

Sylvia served on her Panhellenic board at Northwestern and shared with her mother her experiences and how she became friends

with many of the women on that board from other sororities. When Sylvia was invited by the Long Beach Pi Phi club for a holiday party, the mothers were included. Anna says that the Pi Phi alumnae encouraged Sylvia to apply for the Long Beach Panhellenic Scholarship, which she did, and won.

But a funny thing happened. Anna discovered that Kappa wasn't represented in the Long Beach Panhellenic group, so she became its representative. She says, "I have made many friends through this group and realized that it doesn't matter what Greek organization you are in. The bottom line is we all share similar experiences."

Following Sylvia's graduation, Anna and her husband, Jon, Sylvia's dad, took Sylvia to Monmouth, where they visited both homes of their Founders, The Stewart House and the Holt House, learning about the women who went boldly to a small liberal arts college in the first place, then founded organizations that are still thriving on campuses today. Later they headed south to St. Louis and visited Pi Phi's national headquarters. Anna writes that "though different from Kappa's Columbus, Ohio, headquarters, it is also very much the same . . . the heartbeat of a fraternity."

Thinking back to the Kappa stories she told Sylvia during childhood, Anna says she now realizes she wasn't recruiting Sylvia for Kappa, but was recruiting her to be in a National Panhellenic group. 



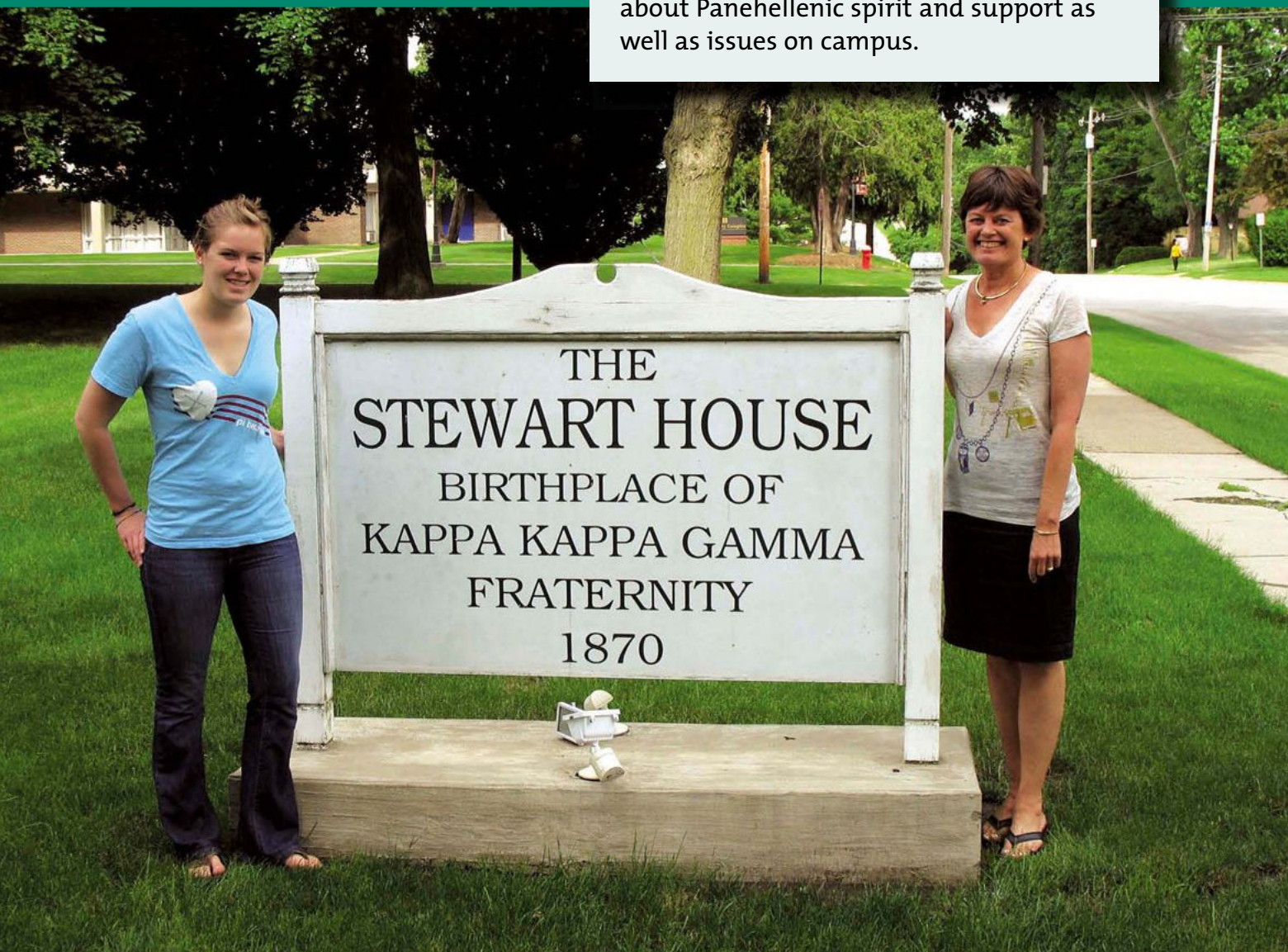


visit to Monmouth, Ill.

# Journey

## NPCWOMEN.ORG

Visit NPC's new website at [npcwomen.org](http://npcwomen.org)! Find out how you can support Kappa and Panhellenic by participating in Badge Day on March 4, 2013, read news from NPC President Jane Sutton (Alpha Xi Delta), and more! Also, please share Panhellenic-minded stories with *The Key* magazine by emailing [thekey@kkg.org](mailto:thekey@kkg.org). We want to hear about Panhellenic spirit and support as well as issues on campus.



**ANNA DOLBY ZAICH, UCLA**, visits The Stewart House in Monmouth, with her daughter Sylvia Pauline Zaich, a member of Pi Beta Phi at Northwestern. During the post-graduation trip, the mother and daughter also visited the Holt House, where Pi Phi was founded.

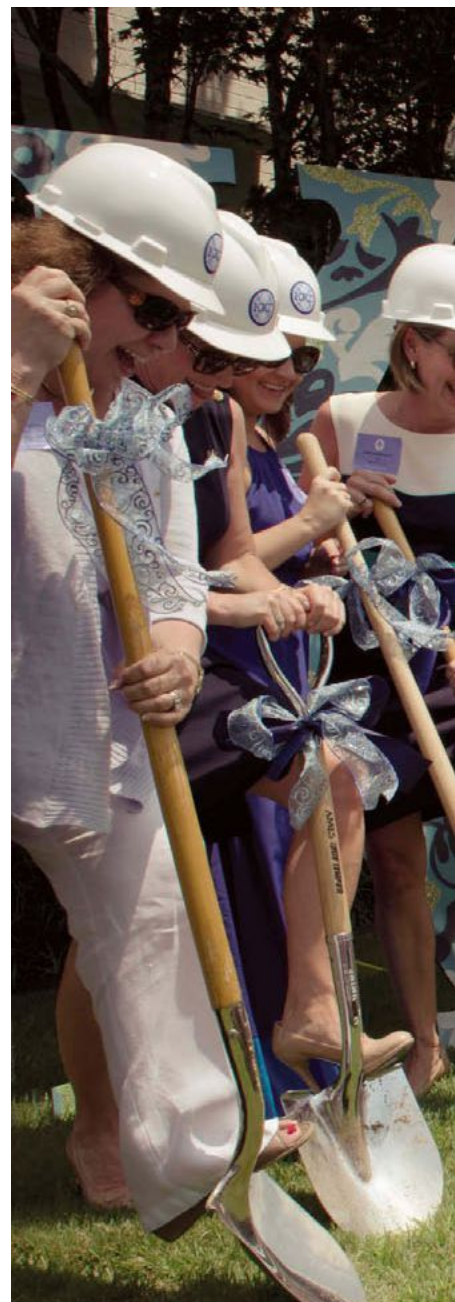
## Home Sweet Home

### *Gamma Nu House at Arkansas Gets \$7-Million Upgrade*

On a beautiful Saturday in early May, active members of **GAMMA NU, Arkansas**, and Kappa Kappa Gamma alumnae gathered on the front lawn of the chapter house for a groundbreaking ceremony to celebrate the start of a \$7-million property renovation. House Board President, **MARY ANNE MALCOM CUPP, Arkansas**, said the event was the last opportunity to walk through the current house before construction began with workmen tearing off the back half of the house and gutting the front half. The beautiful Greek Revival facade on the front will remain, but the inside will have larger common areas, adding about 13,000 square feet to provide dining, studying and gathering space.

Funding for the renovation includes \$3 million in generous donations provided by alumnae, friends and family through the “Our Legacy, Our Future” capital campaign. As of the groundbreaking ceremony, only \$300,000 remained to be raised. Gamma Nu is working with the Kappa Kappa Gamma Foundation to fund the educational areas of the construction. Under tax rules, the Kappa Foundation may accept tax-deductible contributions to make grants to a housing corporation only if the grant is used solely for educational spaces, equipment and materials. “**GAMMA PHI, SMU**, also successfully used this grant process in rebuilding the chapter facility there,” says Foundation Executive Director **ANN STAFFORD TRUESDELL, Ohio Wesleyan**. Bank financing has been secured for \$4 million of the project cost.

Gamma Nu owns its land and house, which was last renovated in 1965 to house 75 women. Over the past three years, Greek life at the University of Arkansas has seen a huge growth in Panhellenic sorority Recruitment, leading to an increase in pledge class numbers by 30 percent each year. At Gamma Nu, Kappa’s largest chapter at 367, they have crammed 94 women into every nook and cranny,



Thirteen members of the Gamma Nu House Board and fundraising committee don hard hats and wield shovels to turn the first dirt of the \$7 million renovation of the **GAMMA NU, Arkansas**, chapter house.





*Photo courtesy of Ozarks Photography.*

carving sleeping space out of any corner available. The new facility will comfortably sleep 92, and will incorporate upgraded systems throughout the house. When complete, the chapter room will accommodate 350.

The House Board has hired Tom Walker of Retail Realty Group, St. Louis, to serve as project manager. He worked with Eric Nielson Architects, Brinkman Contractors, the city of Fayetteville and others to finalize plans, complete preliminary procedures and secure necessary permits. Construction began in May,

with an expected completion date of August 2013. The House Board has worked to find alternative housing options for Gamma Nu members during construction.

Gamma Nu was founded at Arkansas in 1925. The House Board and campaign committee have worked for several years to plan the changes and raise the funds to renovate the house. Their goal was to plan for the next 85 years of use. For more, visit [www.GammaNuRenovation.com](http://www.GammaNuRenovation.com).





## A Fresh Look for Gamma Xi, *UCLA*



A peek into the refurbished "Key Room" where **GAMMA XI** holds Chapter Council meetings and entertains visitors.



Pictured in front of the new fireplace mantel added during the renovation of **GAMMA XI, UCLA**, are House Board members who oversaw the project, **MARY FORTNER CORROUGH, Washington**, seated, and **DENISE TYSON, Villanova**, and **ANDREA GREEN, Colorado**.



When **DENISE TYSON, Villanova**, first walked into the Spanish-style chapter house at **GAMMA XI, UCLA**, she was impressed. Her chapter at Villanova did not have a chapter house, so it was her first time to experience one. She originally became involved with the chapter as House Adviser. A year ago in May, Denise joined the House Board and she was quickly elected President. Other commitments and job constraints had caused three of the House Board members to step down.

At one of the spring 2011 House Board meetings, the Recruitment Chairman mentioned that three rooms they use for Recruitment had not been re-done in recent years. The chapter wanted a renovation so that in the fall they would have a good showing for possible new members.

They consulted House Board Treasurer **MARY FORTNER CORROUGH, Washington**, who said that renovations and major maintenance had not been done in several years and there was a savings of unused funds that could be used.

Mary took the lead on finding a talented interior designer from the Los Angeles firm of Barclay Butera who, within a \$75,000 budget, helped the board choose fabrics, furniture, curtains, kitchen counter tops, paint

and stain for the hardwood floors. She also helped them select a new mantel and art.

From June 15 to August 15, \$150,000 was spent renovating and redecorating the main floor of the chapter house, upgrading the Internet, updating three of the bedrooms and landscaping the grounds. Denise and Philanthropy Adviser, **ANDREA GREEN, Colorado**, supervised the day-to-day work. San Diego award-winning landscape designer, Adrienne Sherwood, planned the landscape design and repurposed and purchased all the flowers and plants for the front, back and side of the house—a generous donation.

The House Board held an open house barbecue on the first weekend of school in September 2011 for chapter members, advisers and local alumnae, who all enjoyed peeking around during self-guided tours. In October, alumnae from the 1961–62 new member class stopped by during a reunion trip and loved the changes.

In addition to maintaining the UCLA chapter house, the Gamma Xi House Board also manages a House Director, provides scholarships, and they have established a relationship with a food donation charity, Angel Harvest, donating leftovers to the needy. 🗝️



## fraternity news

Taking a tour of the recently gutted **GAMMA KAPPA**, *William & Mary*, chapter house, **VIKKI HAAG DAY**, *Whitman*, RDA, left, had the opportunity to see the progress of the renovation funded by alumna **SALLY IVES GORE** (not pictured), *William & Mary*. Hosting Vikki are House Board President **BARBARA (BOBBIE) HENRY TODD**, *William & Mary*, House Board member, **ANNIE BETTIE CARD HERREN**, *Texas*, and **ALICE MATTHEWS ERICKSON**, *William & Mary* (Sally's Kappa "little sister.")



After a wait of more than 20 years, sorority houses are being built on the campus at the University of Richmond. In front of the Kappa Cottage under construction on Sorority Court is interior decorator **ANNA AUSTIN GIVENS**, *Richmond*, left, a member of the **ZETA OMICRON** House Board, with House Board President **DEBBIE MONFORT FIREBAUGH**, *William & Mary*.

# Hard Hat Zones in Virginia!

## Gamma Kappa Gets Facelift

Members of the **WILLIAMSBURG ALUMNAE ASSOCIATION** rolled up their sleeves to pack up the **GAMMA KAPPA CHAPTER** house on the William & Mary campus during graduation weekend. Furniture had already been stored, and the women emptied kitchen cabinets, closets and shelves, to be stored during the summer-long demolition and renovation of the 1930 building.

Made possible through the generous gift of Gamma Kappa alumna, **SALLY IVES GORE**, an Alumnae Achievement Award recipient in 2008, the renovation includes an upgraded electrical system, an improved kitchen facility, an expanded great room with new cabinetry and granite buffet, a new laundry room and all new bathrooms. It will be the first and only sorority on campus to provide a wheelchair-accessible entry and an accessible powder room.

A committee composed of representatives of the college, the House Board, active members and Sally have worked more than two years on plans for the renovation project. Since the sorority house is owned by the college,

they manage the project. An engineering study was done by a local architectural firm and the job was awarded to a construction firm through the prescribed state competitive bid process, since William & Mary is a state college. The committee has worked with an interior design firm on finishes and furnishings to provide a functional and pleasing environment for the 102 chapter members, 20 of whom live in the house.

A September ribbon-cutting ceremony and reception will honor Sally for this major renovation, with college president Taylor Reveley cutting the ribbon. During the summer, **VIKKI HAAG DAY**, *Whitman*, visited the campus and had an opportunity to tour the house, which had been gutted in preparation for the remodel.

Gamma Kappa was chartered at William & Mary in 1923, just six years after the college first admitted women. Chapter members and alumnae will celebrate the chapter's 90th anniversary just six months after completion of the renovation and remain grateful to their benefactor, Sally Ives Gore, for her generosity.

## Zeta Omicron Builds a Cottage

For more than twenty years, *Zeta Omicron*, **RICHMOND**, has had a House Board but no house. After numerous attempts to get some sort of space for women's fraternities, representatives from the sororities formed a task force to collaborate with university representatives—the result is a new-construction Sorority Court, set to open this fall.


Fifty percent of women on campus participate in the Greek system. Along with Kappa Kappa Gamma are Delta Delta Delta, Delta Gamma, Kappa Alpha Theta and Pi Beta Phi. In addition to the five NPC sororities, there are two National Pan-Hellenic Council chapters, Alpha Kappa Alpha and Delta Sigma.

Zeta Omicron was installed on May 2, 1987, and currently has about 95 members. For years, the sororities and administration couldn't agree on a plan that was feasible for both the university and the chapters. The House Board anticipated that it would need to take out a mortgage to build a space if they ever had the opportunity. "But in the end," says House Board

President **DEBBIE MONFORT FIREBAUGH**, *William & Mary*, "the university decided to build a student activities complex, which includes a sorority court."

The five NPC sororities and two Pan-Hellenic chapters will occupy the cottages. Debbie says that the Kappa cottage will include a foyer, a large meeting room, two restrooms, a full kitchen and storage space. "House Board Member **ANNA AUSTIN GIVENS**, *Richmond*, is an interior decorator," says Debbie. "She is working hard on the design to give our cottage a warm and homey feeling." The Kappa cottage will have a state-of-the-art AV system for presentations or for sisterhood movie nights.

The House Board will sign a long-term lease on the cottage. The funds they have saved over the years will pay for the initial five-year lease and the upgrades to personalize it. Says Debbie, "We are so excited about our new space. This is a dream that is finally coming true."

The grand opening will take place in November. 



# In Memoriam

## Honoring Those We Have Loved and Lost

*These names were submitted to Fraternity Headquarters between February 2, 2012, and May 2, 2012.*

### \* ADELPHI COLLEGE

Leahy, Ann, '50, d. 02/12  
Luthy, Winifred Oconnell, '35, d. 02/06

### \* ADRIAN COLLEGE

Humphrey, Opal Harmes, '38, d. 04/12

### AKRON, UNIVERSITY OF

Aspell, Ethel Ferns, '45, d. 12/11  
Goffinet, Mary Smith, '58, d. 03/12

### ALABAMA, UNIVERSITY OF

Burkett, Eva Houseal, '70, d. 03/12  
Jones, Jody Williams, '53, d. 11/11  
Mauemene, Douglas Hempstead, '37, d. 03/12  
Pearce, Betty Wisdom, '47, d. 03/12  
Simpson, Agnes Westervelt, '43, d. 04/12  
Whitney, Vernon Welch, '42, d. 12/10

### ALLEGHENY COLLEGE

Culbertson, Margaret Seib, '49, d. 04/12

### ARIZONA, UNIVERSITY OF

Berridge, Janice Laprade, '45, d. 02/12  
Hoarn, Yvonne Ross, '42, d. 01/12  
Monthan, Doris Born, '43, d. 01/12

### ARKANSAS, UNIVERSITY OF

Brenner, Trilby Earnheart, '48, d. 04/12  
Jamison, Violet Reinoehl, '28, d. 02/12  
Riggs, Inez Waldron, '43, d. 03/12  
Shelton, Sarah Simpson, '60, d. 02/11

### \* BARNARD COLLEGE

Auchincloss, Priscilla Stanton, '06, d. 03/72  
Colley, Mary Stewart, '10, d. 03/87  
Thompson, Elizabeth, '00, d. 09/73

### BUTLER UNIVERSITY

Bockoski, Lillian Rees, '35, d. 03/12  
Hulett, Dorothy Srader, '36, d. 01/12

### CALIFORNIA, U. OF, BERKELEY

Gabie, Motts Sutcliffe, '62, d. 01/12  
Goodin, Marion Sproul, '35, d. 07/09  
Milliken, Patricia Alexander, '35, d. 01/12  
Mosden, Eleanor Graupner, '37, d. 02/12

### CARNEGIE MELLON UNIVERSITY

Nadel, Diana Dayton, '60, d. 02/12  
Wells, Dorothy, '46, d. 03/12

### CINCINNATI, UNIVERSITY OF

Bidlingmeyer, Jane Hauenstein, '59, d. 04/10  
Knab, Janet Scheid, '42, d. 02/12

### COLORADO COLLEGE

Rowe, Alice Crabtree, '54, d. 04/12  
Williams, Constance Burritt, '44, d. 01/12

### COLORADO, UNIVERSITY OF

Cantrell, Marilyn Clover, '49, d. 03/12  
Lanagan, Sally Roetzel, '65, d. 02/12  
Platt, Nancy Gilman, '54, d. 01/11

### CONNECTICUT, UNIVERSITY OF

Fitch, Mildred Buecher, '49, d. 01/12  
LaCava, Stephanie Golankiewicz, '91, d. 01/12  
Leonard, Sarah, '51, d. 09/09

### CORNELL UNIVERSITY

Bartholow, Virginia Noyes, '48, d. 01/12  
Jenks, Elizabeth Glover, '46, d. 03/12  
Rumsey, Nancy Hillyer, '52, d. 04/12  
Warner, Janet Wilbor, '38, d. 02/12

### DENISON UNIVERSITY

Carruth, Elizabeth Davies, '31, d. 09/10  
Lathe, Lucile Feller, '43, d. 10/10  
Webster, Elizabeth Holler, '43, d. 04/11

### DEPAUW UNIVERSITY

Holt, Barbara Lenfesty, '47, d. 02/12  
Moseley, Martha Tucker, '44, d. 06/10

### DRAKE UNIVERSITY

Gettys, Anne Holroyd, '40, d. 03/07  
Goodwin, Eileen Grennell, '35, d. 04/12  
Hearshman, Gloria Codner, '46, d. 04/12  
Irwin, Mary McGowan, '46, d. 03/12  
Morton, Margaret Kircher, '45, d. 03/11

### DUKE UNIVERSITY

Moore, Sylvia Sommer, '47, d. 04/11

### FRESNO STATE

Harris, Judy Anderson, '60, d. 03/12

### GEORGE WASHINGTON UNIVERSITY

Glynn, Janet McEwan, '43, d. 01/12  
Taliaferro, Patricia Calloway, '45, d. 03/12

### HARVARD UNIVERSITY

Chang, Wendy, '10, d. 04/12

### HILLSDALE COLLEGE

Cripps, Suzanne Reed, '55, d. 03/11  
Geryk, Mercedes Horan, '43, d. 05/05  
Mirgon, Judy Weingartner, '58, d. 03/12  
Thomas, Mary Roe, '40, d. 02/12

### IDAHO, UNIVERSITY OF

Ross, Patricia Hagan, '42, d. 02/12

### ILLINOIS WESLEYAN UNIVERSITY

Gilley, Sheila Smith, '42, d. 02/12  
Jackson, Ruth Unzicker, '61, d. 11/05

### ILLINOIS, UNIVERSITY OF

Collier, Barbara Noble, '39, d. 03/12  
Grove, Catherine Brand, '27, d. 04/12  
Jones, Marilyn Dow, '38, d. 01/12

### INDIANA UNIVERSITY

Bromm, Kitty Craig, '56, d. 02/12  
Douglass, Harriet Bourland, '51, d. 04/12  
Drummond, Mary Hamilton, '51, d. 04/12  
Martin, Jeanne Hopkins, '60, d. 08/11  
Starr, Kathryn Kayser, '44, d. 04/12  
Townsend, Lou Ann Kayser, '47, d. 01/12

### IOWA STATE UNIVERSITY

Stewart, Carolyn Mitchell, '46, d. 03/11

### IOWA, UNIVERSITY OF

Bolton, Jane Summerville, '57, d. 07/10  
Hegstrom, Maridee Hill, '46, d. 03/12  
Strausz, Francine Kruse, '51, d. 04/12  
Walker, Donna Schumann, '55, d. 03/12

### KANSAS STATE UNIVERSITY

Chatman, Eugenia Leighton, '28, d. 03/01  
Evans, Jane Wilkinson, '54, d. 04/12  
Jackson, Claire Rickenbacker, '38, d. 01/12  
Sargent, Gladys Richardson, '44, d. 02/12  
Smull, Margaret Massengill, '42, d. 03/12

### KANSAS, UNIVERSITY OF

Duncan, Mary Myers, '53, d. 03/12

### KENTUCKY, UNIVERSITY OF

Kerns, Mary Dunlap, '45, d. 01/12  
Montgomery, Frances Treacy, '46, d. 03/12  
Reeves, Eleanor Unsworth, '52, d. 03/12  
Stone, Barbara Coffman, '56, d. 02/12

### LOUISIANA STATE UNIVERSITY

Burton, Cynthia Taylor, '42, d. 02/12  
Cox, Jacqueline Myers, '44, d. 03/12  
McNeice, Betty Staples, '40, d. 04/12  
Moak, Isma Keller, '44, d. 03/12  
Pickering, Marguerite Kehl, '58, d. 01/12  
Roy, Eleanor Holcombe, '42, d. 10/11  
Stuart, Dorothy Philipps, '43, d. 04/12  
Weir, Nancy Fitzgerald, '45, d. 02/12

### MASSACHUSETTS, UNIVERSITY OF

Stedman, Janet Mallon, '44, d. 04/12

### MCGILL UNIVERSITY

Keyes, Joan Paterson, '45, d. 12/11

### MIAMI UNIVERSITY

Brann, Carolyn Coler, '42, d. 02/12  
Oviatt, Marilyn Spelman, '44, d. 01/12  
Sweeney, Marcia McLean, '47, d. 08/11

### MIAMI, UNIVERSITY OF

McKenry, Roberta McCahill, '44, d. 03/12

### MICHIGAN STATE UNIVERSITY

Althen, Shirley Knowlton, '40, d. 03/12  
Early, Julia Byrnes, '39, d. 02/12  
Johnston, Frieda Fritz, '45, d. 01/12  
Leeman, Mary Jane Riker, '41, d. 01/12  
Osgood, Ruth Vanetten, '46, d. 03/12  
Shepard, Mary Peden, '50, d. 01/12

### MICHIGAN, UNIVERSITY OF

Staebler, Burnette Bradley, '29, d. 05/06  
Thompson, Marcia Netting, '42, d. 10/11

### \* MIDDLEBURY COLLEGE

Gerra, Barbara Platou, '42, d. 04/12

### MINNESOTA, UNIVERSITY OF

Bennett, Betsy Bruce, '36, d. 10/08  
Hayes, Mary Riley, '51, d. 10/11  
Woodhead, Barbara Bruce, '34, d. 02/12

### MISSOURI, UNIVERSITY OF

Bussey, Virginia Cox, '42, d. 03/12  
Douglass, Juliet Lyons, '36, d. 03/12  
Schott-Truog, Mary Jane Chalkley, '31, d. 04/12  
Smith, Scottie Conkling, '43, d. 04/12  
Stappelman, Christine Beasley, '70, d. 02/12  
Tucker, Kathleen, '46, d. 12/11

### MONMOUTH COLLEGE

James, Marian Stanton, '35, d. 01/12  
Jones, Janet Flume, '45, d. 02/08  
Leinhausner, Barbara, '52, d. 06/11  
Lowell, Jane Quinby, '45, d. 02/12  
Sturges, Georgia Spicer, '42, d. 03/12

### MONTANA, UNIVERSITY OF

Koessler, Barbara Streit, '39, d. 11/11  
Mathiasen, Lorraine Ziebarth, '47, d. 02/12  
O'Neill, Patricia, '61, d. 02/12  
Payne, Virginia Schaal, '46, d. 01/12

### NEBRASKA, UNIVERSITY OF

Bacci, Blythe Thomsen, '52, d. 02/12  
Bystrom, Irene Neville, '38, d. 02/12  
Deputron, Mary Ralston, '42, d. 12/11  
Duncan, Marjorie Melville, '37, d. 04/12  
Jenkins, Nancy Lawlor, '46, d. 04/12  
Lyman, Louise Condon, '33, d. 03/12  
Martin, Marian Bowers, '38, d. 06/04  
Warner, Ruth Korb, '43, d. 04/07

### NEW MEXICO, UNIVERSITY OF

Draves, Wilma Tapp, '50, d. 03/12  
King, Janet McCanna, '48, d. 01/12  
McCanna, Janet, '70, d. 01/12  
Vandenburg, Katherine Lewis, '63, d. 11/08

### \* NORTH DAKOTA STATE UNIVERSITY

Bartholomew, Joan Marks, '52, d. 05/08

### NORTHWESTERN UNIVERSITY

Cameron, Bette Claypool, '41, d. 06/08

### OHIO STATE UNIVERSITY

Bell, Jean Cary, '52, d. 01/12  
Sanderson, Helene Tefft, '40, d. 01/12  
Stoner, Catharine Clark, '57, d. 04/12

### OKLAHOMA STATE UNIVERSITY

Turner, Elizabeth Norman, '53, d. 04/12

### OKLAHOMA, UNIVERSITY OF

Boehler, Helen Armstrong, '38, d. 04/10  
Davis, Suzanne Billings, '41, d. 04/12  
Gulley, Mary Bragg, '43, d. 03/12  
Gwinn, Judith Head, '57, d. 03/12

### OREGON STATE UNIVERSITY

Davis, Suzanne Chapman, '59, d. 04/12  
Frank, Sara Cooley, '50, d. 03/12  
Frome, Kathleen Yoder, '62, d. 02/12  
Hutchins, Marva Frost, '54, d. 09/11  
Sinclair, Beverly Siemens, '41, d. 01/12

### OREGON, UNIVERSITY OF

Olson, Betty Anderson, '54, d. 01/12

### \* PENNSYLVANIA, UNIVERSITY OF

Cline, Patricia, '64, d. 04/12  
Mallon, Eileen McKeon, '49, d. 03/12

### PITTSBURGH, UNIVERSITY OF

Armstrong, Nicole, '05, d. 02/12  
Daugherty, Janet Elliott, '41, d. 02/12  
Ord, Sarah Isler, '33, d. 03/12

### PURDUE UNIVERSITY

Foster, Virginia Canan, '48, d. 01/12  
Harman, Lucy Moore, '49, d. 02/12  
Shutack, Patricia McCarthy, '48, d. 05/11

### ROLLINS COLLEGE

Scrimsher, Ruth Blunden, '36, d. 03/06

### \* SAN JOSE STATE UNIVERSITY

Bickford, Nancy Burke, '55, d. 03/12  
Vanderhurst, June Kopplin, '49, d. 07/04

### SOUTH CAROLINA, UNIVERSITY OF

Hosford, Sofie Wonderly, '90, d. 03/12  
McAllister, Tara, '91, d. 07/09

### SOUTHERN CALIFORNIA, U. OF

Grundy, Audrey Terry, '48, d. 03/12  
Kaiser, Jacque Congdon, '53, d. 02/12

### SOUTHERN METHODIST UNIVERSITY

Jamison, Nancy Hopkins, '50, d. 03/12  
Lehman, Carolyn, '58, d. 03/12

### ST. LAWRENCE UNIVERSITY

Aspinall, Anne, '65, d. 02/12

### STANFORD UNIVERSITY

Long, Marcia, '43, d. 08/10  
Palmer, Helen Lacy, '54, d. 11/11  
Wishnie, Amy, '94, d. 03/12

### SYRACUSE UNIVERSITY

Johnston, Mary Graham, '46, d. 04/12  
White, Jinnie Ferguson, '31, d. 03/12

### TEXAS A&M UNIVERSITY

Fair, Kay, '81, d. 02/12

### TEXAS TECH UNIVERSITY

Dillon, Johnneen Bice, '53, d. 01/12  
Martin, Vera Kinkler, '54, d. 10/11  
McCullough, Maxine Fry, '53, d. 03/12

### TEXAS, UNIVERSITY OF

Barstow, Ann Red, '50, d. 02/02  
DeBarbie, Margaret Brown, '44, d. 03/12  
Gall, Laura Woods, '50, d. 02/12  
Liljenwall, Margaret McDowell, '47, d. 04/12  
McDonald, Marilyn Murray, '51, d. 02/12  
Schedler, Elizabeth Niggli, '38, d. 03/12  
Thompson, Josephine Houston, '37, d. 01/12

### TORONTO, UNIVERSITY OF

Hill, Marguerite, '37, d. 01/12  
Robb, Dodi, '39, d. 02/12

### TULANE UNIVERSITY

Badcock, Margaret Mayher, '59, d. 08/10  
Clark, Sandra Sharp, '56, d. 04/12  
Newell, Saidee Watson, '56, d. 03/08  
Sanders, Margaret Craig, '49, d. 03/12  
Thomas, Sidonie Scott, '36, d. 08/05

### TULSA, UNIVERSITY OF

Bundy, Elizabeth Bird, '53, d. 02/12  
Kropp, Lillian Bell, '59, d. 01/12

### UTAH, UNIVERSITY OF

Davies, June Barton, '43, d. 01/11  
Smith, Therese Lowell, '39, d. 03/12

### WASHINGTON STATE UNIVERSITY

Currie, Shirley Shawgo, '50, d. 02/12  
Hagen, Venette Maybin, '41, d. 02/12  
Saunders, Bessie True, '36, d. 11/11  
Walter, Myra Miller, '35, d. 11/11

### WASHINGTON UNIVERSITY

Graue, Eliza Brownrigg, '52, d. 04/12  
Haeussler, Adele Luetscher, '45, d. 03/12  
Hungerford, Marian Green, '55, d. 03/12  
Lydon, Alicia Kircher, '48, d. 02/12  
Sherman, Martha Maize, '42, d. 02/12  
Stoops, Betty Ringo, '51, d. 03/12

### WASHINGTON, UNIVERSITY OF

Flinn, Marijane Argue, '39, d. 03/12  
Golobic, Norma Scherenzel, '45, d. 02/12  
Ketcham, Serena Cole, '49, d. 04/12  
Weber, Ann Fraser, '50, d. 02/12  
Winter, Frances, '29, d. 11/11

### WEST VIRGINIA UNIVERSITY

Fryer, Sylvia Watson, '55, d. 04/12

### WHITMAN COLLEGE

Penrose, Polly Hansen, '46, d. 04/12

### WILLIAM AND MARY, COLLEGE OF

Arms, Patricia Nixon, '40, d. 02/12  
Engler, Mary Russell, '45, d. 04/12  
Roane, Barbara Humphrey, '46, d. 04/12

### WISCONSIN, UNIVERSITY OF

Warrick, Jo Ann McClung, '47, d. 04/12

### WYOMING, UNIVERSITY OF

Pate, Jean Finn, '48, d. 02/12

\* Indicates inactive chapters.

# For Recruitment or Retention, Know Who You Are

Developed for chapter Recruitment by ELIZABETH BAILEY, *Mississippi*, the Coat of Arms activity and the “Fleur-de-Lis Who Are We” workshop can be used by chapters for Recruitment prep or for a sisterhood activity. It could also be adapted for use by alumnae associations.

## Coat of Arms Activity

- ▶ Draw something that characterizes a recent peak performance for your chapter.
- ▶ Draw something about your chapter that few people know.
- ▶ Draw a symbol of how your chapter likes to spend spare time—what do you do for fun?
- ▶ Draw something at which your chapter excels.
- ▶ If you had a chapter motto, draw something that would epitomize that motto.



Using this exercise, ZETA PI, *College of Idaho*, created a colorful representation of their chapter, shown above. The chapter won the Recruitment Award this year at Convention for their campus Panhellenic size. Three years ago, this chapter had only six members, but

by the end of the biennium Zeta Pi increased their chapter size more than fivefold and is now the largest chapter on campus. “With a clear sense of their chapter identity, strong sisterhood and a close partnership with Fraternity support, Zeta Pi is thriving like never before,” says Elizabeth Bailey, former Director of Membership.

## Zeta Pi’s Coat of Arms:

*The center band of the fleur-de-lis represents our strength in ritual. The top of the fleur-de-lis represents our recent performance in Recruitment, with the young irises growing under the support of the older stems. The left represents something unique about our chapter, the Kash for Keys program. The right represents things we like to do, like watch movies, sing Disney songs, and craft. Obviously the bottom half has our letters, KKG, our Zeta Pi symbols. The phrase “individually unique, together complete” represents the diversity of our chapter, yet the unity of our bonds. This can be seen in the 31 different owls, each representing a sister, that together form a unified ring.*

## Fleur-de-Lis . . . Who Are We?

- ▶ Each member has a fleur-de-lis with four blank lines on it hanging on the wall.
- ▶ Members fill in positive Kappa cognitives for each other on the fleur-de-lis.
- ▶ Most common cognitives are listed for the chapter.
- ▶ That is how we see ourselves.
- ▶ Members take home their fleur-de-lis.

## Who We Want to Be

- ▶ Chapter brainstorms cognitives on how we want others to see the chapter.
  - Faculty
  - Campus
  - Community
  - Parents
- ▶ Compare both lists for common cognitives.

**This is the list of qualities we want in our new members.**



# Changing Gears to Get to th

Professional cyclist Evie Stevens followed her passion and discovered the possibilities of second beginnings

—By **SOMMERANN McCULLOUGH**, *Denison*

**W**hen Evie Stevens bought her first bike, it sat in her New York City apartment, where she hung clothing and purses on it because she was nervous about riding it in the city. She told her mother, “I would never race it.” Fast forward a few years, and not only is Evie racing, but she is competing on the U.S. women’s cycling team for the London 2012 games.

e Top

**EVIE STEVENS**, Dartmouth



What started as a fun way to stay fit uncovered her passion and skill for professional cycling. After getting her first taste of racing with her sister and brother-in-law over Thanksgiving vacation in 2007, she thought it would be an easy way to stay in shape with her busy work schedule. After riding with a friend in Central Park a few times, he introduced her to a women's clinic for beginning cyclers.

Evie says she almost skipped the first session when her alarm went off at 4 a.m. on a Saturday, but "when I commit, I follow through." When she left her job on Wall Street, she planned a yearlong hiatus from work to try out cycling full time. The first weekend after leaving her job, she won her first U.S. pro race.

Looking back on her decision to leave her job, Evie admits, "I don't know if I really thought that much about what I was doing, which is probably actually why I did it. ... you only get a chance once in your life to go after your dream."

While leaving her job was risky, Evie quickly made connections in the cycling community, which gave her support. She says that meeting Connie Carpenter (Olympic gold medalist, 1984) and the cycling network in Boulder, Colo., has made all the difference.

"(Carpenter) has been a huge mentor to me," Evie says. "For cycling, you need people who can help you. That's what I've learned: you can't figure it all out on your own."

For Evie, entering the cycling world has opened up much more than a career path, it has given her a new direction. "We all have these abilities within us, and I think a lot of times we stay so focused on what we're supposed to be doing ... we miss something inside telling you to try it out," Evie says. While she picked a career path that was less financially stable, Evie has found her passion.

To prepare for the Olympics, Evie rode in Spain, where she trained as part of the Specialized Lululemon women's professional team. While racing all over Europe, she is based out of Girona, Spain.

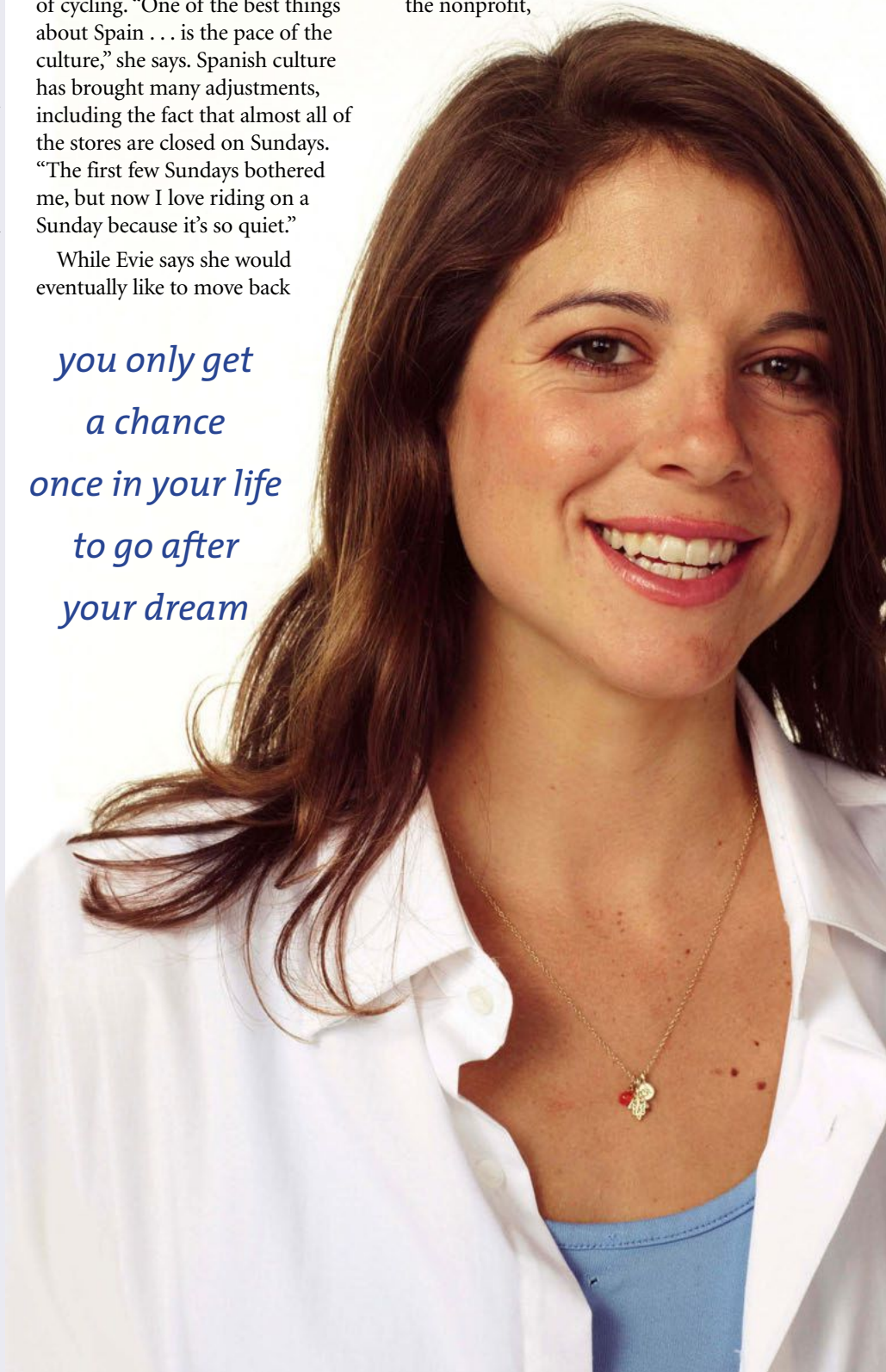
Evie says that the opportunity to travel and experience other cultures has been one of the greatest aspects of cycling. "One of the best things about Spain ... is the pace of the culture," she says. Spanish culture has brought many adjustments, including the fact that almost all of the stores are closed on Sundays. "The first few Sundays bothered me, but now I love riding on a Sunday because it's so quiet."

While Evie says she would eventually like to move back

to the U.S., because "there's just a convenience to what you know," she also recognizes that it will be "challenging to stay in one spot" after moving around for so long.

Evie has travelled almost nonstop since she committed to cycling. In 2010, she went to Peru with her teammates to help raise money for the nonprofit,

*you only get  
a chance  
once in your life  
to go after  
your dream*







leads Marianne Vos from the Fleche Wallone race on April 18 in Huy, Belgium.

Play. “It was incredible that our team, which international, can really be a part of the organization and actually make a difference,” Evie says. It was focused on water safety and worked in the

her self-declared title “citizen of the globe” and new and interesting experiences, it’s difficult to connect with friends. Evie says that most of her friends with whom she remains in contact are her Kappa sisters.

When the subject of being in a sorority comes up, Evie says, “I probably wasn’t the typical sorority type.” But Kappa, the sisterhood has led to making friends in new places.

Evie describes a dinner she was having after a race in New Zealand, “chit chatting about college.” She was surprised to learn that

**KRISTIN ARMSTRONG SAVOLA**, *Idaho*, who won the gold medal in 2008 in women’s cycling, is also a Kappa.

“I had no idea,” Evie says, laughing, “Especially in cycling . . . there’s not that many people.” Evie says that finding this Kappa connection “allows a common ground,” and has made her feel more comfortable.

In terms of keeping in contact with her Kappa sisters from college, Evie says that her friends have been flexible. “They’re very understanding that sometimes I might not email back for three weeks

because I’m at a race and I get focused,” Evie says. But there are times when she is passing through a city for a race and can catch up with a friend in person.

While Kappa has allowed Evie to maintain close friendships and establish new ones, it has also taught her about teamwork. In Kappa “you had to learn how to get along with a diverse group of people and commit to a certain goal,” she says.

This mentality also applies to cycling, where a team of six to eight women race together and have to learn to depend on one another.

“It’s not an individual sport. To really be successful, especially at the top level, you really need a strong team,” Evie says. “I have to put my individual goals aside and ride . . . for the team goal.”

While Evie says that making it to the Olympics is seen as the marquee event in women’s professional cycling, she is just working as hard as she can to improve her weaknesses and her strengths.

“I think right now the team I’m on is, in my opinion, the best team out there,” Evie says.

Evie hopes to one day return to the business world and apply her new skill-set from cycling. “I hope I get back into (business) and find a career that I’m just as passionate about as cycling,” Evie says.

Wherever she goes, she will continue to take on challenges and find new fulfillments. “I’m always pushing my boundaries. When you can push your boundaries and succeed, that’s one of the most satisfying things.” 🔑



# A Gold in

JENNIFER KESSY, USC



# Jen Pairing Competes Beach Volleyball

—By ANN GRAHAM SCHNAEDTER, *Missouri*

JENNIFER KESSY, *USC*, is among two beach volleyball pairings competing in the Olympic Summer Games in London.

In November, second-seeded Jen and April Ross won silver at the Phuket Thailand Open, the final event of the 2011 FIVB Swatch World Tour. The pair is ranked second among U.S. women's teams and fourth overall on the FIVB Olympic rankings, which are used to determine the two beach volleyball pairings who will compete in London. The FIVB is the *Federation Internationale de Volleyball*, which governs all forms of volleyball worldwide.





*Photo credit: Mitchell Haaseth/NBC Olympics*

Jen Kessy is proud to represent the U.S. at the Olympic games in London. Jen and April Ross have been competing as a team in beach volleyball for six years.

Jen has ranked in the AVP's top 11 from 2004–2010, ranked first overall 23 times and finished first 13 times. Jen and April won bronze in Brasilia and silver in Shanghai in 2011 and, in 2010, won first in Shanghai and Rome, second in Moscow and third in Seoul and Sanya, China. Jen earned Most Outstanding Player accolades in Shanghai.

In Chicago in 2009, the pair became just the sixth team worldwide to pass the \$1-million mark in career earnings as partners. From October 2008 through 2010, the duo won seven gold, six silver and three bronze medals. Jen has earned more than \$1 million, the eighth woman and sixth American to reach that plateau in her field.


## goal of being an Olympian

About her six-year partnership with April, she says, “I have played with many amazing players over the years, but have been blessed with a great partner in April, also a Southern Cal alumna.” She admits that six years together is “forever” in volleyball, and they hope to bring home a gold medal.

Adding a bit of glamor to the excitement, Jen and April are serving as Ralph Lauren Brand Ambassadors for the 2012 Olympics. The Ralph Lauren Corporation is again the official outfitter of the U.S. Olympic Teams.

Jen became a rising star by competing in swimming and volleyball at USC, graduating in 2000 with a history degree. She was named All-District in 1997 and All-American in 1998. With a passion for team sports, Jen went on to play for the professional volleyball team Chicago Thunder in 2002. “I like feeling I am a part of something special,” she explains. “Probably (the reason) why I was a Kappa—I spent so much time playing ball and with my teammates, I didn’t feel like a normal college student. But as soon as I walked through the Kappa doors, I felt like a regular co-ed.”

When asked about the most difficult part of her training, Jen admits it is discipline. “I love food, wine, dancing, everything else a 34-year-old woman loves, but my uniform is a bikini and my job is the health of my body. It is difficult to say ‘no’ sometimes and go home early, but it comes with the territory.”

Jen expects to have amazing memories from London that she can one day tell her grandchildren. “I have been working since I was a little girl to achieve the goal of being an Olympian,” says Jen, whose family and friends are making the trip to London. “This is also their Olympics. They have been with me every step of my journey and deserve this as much as I do.” 



In May, Jen and April qualified for the Olympics by winning the FIVB Beach Volleyball Grand Slam in Beijing.



# From Patient to Advocate

A Nebraska Kappa speaks for others on health issues

—By LOIS CATHERMAN HEENEHAN, *Adelphi*



**EMILY SCHLICHTING**, back row, second from left, was supported by her Kappa sisters when she was diagnosed with a rare disorder in her freshman year.

While transitioning from undergraduate school to full-time employment with health benefits and then back to graduate school, Emily is relieved that she will be able to go back on her parent's health insurance during graduate school.



“Health wasn’t even on my radar as a freshman,” she says.

Now **EMILY SCHLICHTING**, *Nebraska*, is carrying her passion for health care advocacy from the University of Nebraska Lincoln campus into her job in the Federal Department of Health and Human Services, Office of Rural Health Policy in the nation’s Capital.

When Emily pledged Kappa, she had already suffered symptoms of a debilitating illness for more than a year, without a correct diagnosis. On the night of initiation, she ran a fever over 103 but made it through the ceremony with help from chapter advisers. After two weeks in the hospital, Emily returned to campus where chapter members showed support, watching movies with her, keeping her connected and abreast of classwork and boosting her morale.

“The Kappas are so dedicated to each other.” Emily said, “Their sense of bonding gave me no other choice in making my decision,” adding, “the members are intelligent and involved, but still know how to have fun.”

Emily finally received a diagnosis: Behcet’s disease or syndrome. This is a rare autoimmune disorder that causes chronic inflammation of blood vessels throughout the body, resulting in swelling, redness, heat and pain. There is no cure and treatment focuses on reducing discomfort and preventing serious complications. The symptoms are episodic, occurring in what doctors call “flares.”

Emily shared her story online and via video. In March of her sophomore year, health care reform was signed into law and Emily realized how much it affected her. She is quoted in a college magazine as saying:

“It really helped me to understand the impact that public service can have on people’s lives. I think that was a kind of wake-up call to something that

personally affected me and is a good reason to get out of bed in the morning.”

Getting out of bed in the morning can be difficult when a flare occurs. Emily is tired and may suffer joint pains similar to rheumatoid arthritis. She must be careful not to let herself become run down and allow serious complications to set in. That can be difficult in the fast pace of college life.

In addition to the multiple activities and organizations benefiting from her input and organizational skills, Emily maintains a 3.98 grade point average while working on two majors—in political science and communication studies—and a minor in Latin. She serves on the Association of Students of the University of Nebraska, research with the Undergraduate Creative Activities and Research Experience Program, in the College of Arts and Sciences Dean’s Scholars Society and in the Innocents Society—the chancellor’s senior honorary.

In the spring of her junior year, Emily’s academic excellence and commitment to public service resulted in the awarding of a \$30,000 Truman Scholarship for use in graduate school. More than 600 students from 264 universities were considered. Laura Damuth, director of undergraduate research and fellowship adviser, says Emily is an exceptional student who works to bring about change. Emily’s graduate study will be in public policy and public health.

Emily helped establish the Plus One Nebraska campaign to enable university employees to claim a financially dependent family member or domestic partner on their insurance policies. She worked during the summer at the Center for American Progress in Washington, D.C., recognizing ways she could help others as an advocate. Helping young people understand the fine points of health care reform became a central focus. Testifying before



*“Health wasn’t even on my radar as a freshman.”*


the U. S. Senate Health Education Labor and Pensions Committee on a live C-SPAN broadcast, she referred to her own circumstances. The law allows Emily to remain on her parents’ health insurance until she’s 26, thus giving her more time to become financially independent before obtaining her own health insurance.

Asked what is the least understood aspect of health care reform, Emily thought for a moment and then said, “How it will affect people’s insurance; how the mandate functions; how existing policies affect insurance companies.”

Cover girl for an issue of *Academic Stars*, the magazine of the College of Arts and

Sciences, for her commitment to serve, Emily encourages finding how service is of particular interest to you. She says the “coolest thing about Kappa” is how it incorporates service.

“If you do service in an area you truly love, it is not work but an opportunity to give back. Be open to people and opportunities. Big things didn’t start out that way. Small things can lead to what you want in life.”

During Emily’s undergraduate experience, she has risen from a typical freshman to a young leader with a tenacious focus on advocacy for affordable health care. 



Never one to be set back by her health challenges, Emily, along with Lauren Jewell and Caitlin Gillespie represented Kappa on University of Nebraska’s homecoming royalty.





Dedicated to Mary Cunningham Smart '68  
**616**  
With Love From the Initiated Class of 2005



# Meet Kappa's Development Chairman, Kay Scholberg Weeks

—By **ANN GRAHAM SCHNAEDTER**, *Missouri*

**F**or Dallas realtor **KATHERINE (KAY) SCHOLBERG WEEKS**, *Bucknell*, volunteering for Kappa and riding horses vie for free time. As the Foundation's Development Committee Chairman, she travels to meet associations, chapters and individuals with whom she shares how Kappas support Kappas through Rose McGill Aid, scholarships, educational programs and two museums.

An avid horsewoman, Kay rode horses as a child until getting sidetracked by high-school sports. Later, when her daughter, Lizzie, started riding at age 8, Kay took up riding again and has taken several equestrian trips with Kappa friends.

Kay has been a residential realtor for 23 years, recently completing her term as president of the MetroTex Association of Realtors. She also has served as regional vice president for the Texas Association of Realtors and as a director for the National Association of Realtors, helping educate both realtors and consumers about real estate laws, issues and trends.

Kay loves her work in real estate. She says, "I really like solving problems and helping people. It is rewarding to help the first-time buyer find a home, find a dream home for a repeat client and help seniors downsize to smaller living spaces." She says the current market has been very challenging.

Recalling a time when she was the newly elected President of **DELTA PHI**, *Bucknell*, Kay says she met former Fraternity President, **JEAN HESS WELLS**, *Georgia*, then Director of Chapters, at Beta Province Meeting in 1975. In a private meeting with Jean, Kay was told she would be getting an adviser, to which Kay naively replied, "Mrs. Wells, do you think I need one?" Jean replied, "Kay, every Kappa chapter has an adviser." Kay says the support from that Kappa adviser provided so much help to her and the chapter, which she will never forget.

After graduating, Kay became a Chapter Consultant and then a Leadership Consultant. As a volunteer, Kay served as Regional Director of Chapters, Assistant to the Directors of Personnel and Chapters, Director of




**KAY SCHOLBERG WEEKS**, *Bucknell*

Membership, Public Relations Chairman and now the Foundation's Development Chairman.

When Kay moved to Texas 34 years ago, she joined the **RICHARDSON-PLANO ALUMNAE ASSOCIATION**. "We published a cookbook, *In Any Event*," she says, "which I still use today." After she moved to Dallas, she joined the **DALLAS ALUMNAE ASSOCIATION**, serving as chairman of the advisory board for **GAMMA PHI**, *SMU* and 2006 Tablesapes Chairman.

Kay says that through the years, she has a lot of memorable Kappa experiences, from her own Initiation, her daughter's pledging and Initiation and her time on Fraternity Council. "I have been so enriched by each of these experiences and the wonderful Kappas I have met."

It is unknown where her next equestrian trip will take her, but she says, "If there are any Kappas who like to ride and enjoy adventure, let me know."

To contact the Foundation, call 866-KKG-1870. 

# When Life Gives You Scraps, Make Quilts!

—By **MAGGIE SIMS COONS**, *Hillsdale*

“I know first-hand what it is like to go from a stable and secure situation to one of great uncertainty overnight,” says **KAREN MARKS NAYLOR**, *Kansas*, who gave her first gift to Kappa’s Rose McGill Confidential Aid Program this year.

As an **OMEGA**, *Kansas*, pledge, Karen learned the story of **PATTY KNUPP**, a member who contracted polio and needed to utilize a negative pressure ventilator (commonly called an iron lung at the time) in order to breathe. The Rose McGill program, which provided much-needed support to Patty, made an impression on Karen. “I loved Kappa, and eventually served as Vice President of the chapter,” she says.

Karen married the university’s senior class president and taught school until she quit to raise two children and support her husband’s career as a naval officer. Moving to the Washington, D.C., area, she joined the **NORTHERN VIRGINIA ALUMNAE ASSOCIATION** and organized a needlework group, whose projects still raise funds for Kappa philanthropies. She volunteered for church, scouting and other community organizations. Her husband’s career included appointments under Presidents Nixon, Ford and Reagan. Karen says she felt she was living the American dream.

On their 25th wedding anniversary, Karen learned that her husband wanted a divorce. Alone, with only \$300 in the bank, she worked two jobs and rented part of her house to support herself.

At a Kappa meeting, she learned that the incoming President of **ZETA NU CHAPTER**, *UC San Diego*, had received a White House internship and was looking for housing. Connections were made and **ALISON HUSHEK** arrived a week later. Alison and Karen had a wonderful summer and still keep in touch.


The alumna needlework group was the beginning of her quilting journey. Karen says,



**KAREN MARKS NAYLOR**, *Kansas*

“I follow a little sign that hangs in my house: ‘When life gives you scraps, make quilts!’”

This journey has led Karen to make quilts for herself, her family and charitable causes while also collecting antique and contemporary quilts, teaching others to quilt, giving lectures to community groups, serving four years on the executive board of the Virginia Quilt Museum and traveling at home and abroad with quilt groups. Karen says her family—two children, their spouses and three grandchildren—bring her great joy.

“While I never received Rose McGill Aid, I know it is available. Now that I am in a position to give back, that is where I want my gifts to go.” 



## Thank You for . . . Doing Your Little Perfectly!

Thank you for your tremendous support of the 2011–2012 Annual Loyalty Fund! Your gifts and participation made it a record-setting year. All of the Foundation's programs are possible because of your exceptional loyalty to Kappa. We appreciate your belief in our mission and know, with you by our side, we will be at the forefront of advancing inspired women leaders! Watch for the 2012–2013 Annual Loyalty Fund Kick-off in late August for an update on last year's successes and our upcoming goals.



*These chapters and alumnae associations supported the Kappa Foundation with gifts between March 13 and June 4, 2012.*

### Chapters Gave \$24,415

Sigma, *Nebraska*  
Beta Chi, *Kentucky*  
Beta Eta<sup>Δ</sup>, *Stanford*  
Beta Pi, *Washington*  
Beta Tau, *Syracuse*  
Beta Theta, *Oklahoma*  
Gamma Beta, *New Mexico*  
Gamma Gamma, *Whitman*  
Gamma Epsilon, *Pittsburgh*  
Gamma Zeta, *Arizona*  
Gamma Omicron, *Wyoming*  
Gamma Phi, *SMU*  
Delta, *Indiana*  
Delta Iota, *LSU*  
Delta Rho, *Mississippi*  
Epsilon Epsilon, *Emory*  
Epsilon Gamma, *North Carolina*  
Epsilon Nu, *Vanderbilt*  
Epsilon Xi, *Cal State Northridge*  
Epsilon Zeta, *Florida State*  
Zeta Zeta, *Westminster*  
Zeta Omicron, *Richmond*  
Zeta Psi, *Wake Forest*  
Zeta Omega, *Waterloo*  
Eta Delta, *Valparaiso*  
Eta Iota, *Creighton*

### Alumnae Associations Gave \$129,940

Akron  
Albuquerque  
Arcadia  
Ashville  
Bainbridge Island  
Baton Rouge  
Boulder  
Brevard County  
Cape Cod  
Chicago Loop  
Chico-Redding  
Cincinnati  
Cleveland  
Cleveland West Shore  
Collier County  
Columbus, Ohio  
Dallas  
Dayton  
Desert  
Detroit East Suburban  
East Lake-Porter County  
Essex  
Forsyth County  
Fox River Valley  
Fort Bend County  
Fort Lauderdale  
Grapevine-Colleyville-  
Southlake

Greater Daytona  
Greater Los Angeles  
Greater Raleigh  
Greater South/Southwest Sub  
Greenville  
Hawaii  
Highland Lakes  
Hinsdale  
Houston  
Howard County  
Hutchinson  
Indian River  
Kansas City  
La Grange  
Lafayette  
Lake Ray Hubbard  
Lake Shore  
Lawrence  
Lee County  
Lexington  
Longview  
Milwaukee  
Nashville  
New York City  
North Shore  
Northern Colorado  
Northern New Jersey  
Northwest Suburban  
Oak Park-River Forest  
Orange County  
Palo Alto

Philadelphia  
Phoenix  
Piedmont-Carolina  
Portland  
Raritan Valley  
Rhode Island  
Richardson-Plano  
Richmond, Va.  
Sacramento Valley  
San Dieguito  
San Fernando Valley  
San Francisco-Marin  
San Mateo  
Sandhills  
Santa Cruz County  
Sarasota-Manatee Counties  
Seattle  
Sierra  
Southern New Jersey  
Springfield, Mo.  
St. Louis  
Stillwater  
Temple  
Tucson  
Tulsa  
Twin Cities  
Wasatch Mountains  
West Valley-Arizona  
Williamsburg

# Small Groups, Big Hearts

## *A Fundraising Tea at Mrs. Featherstone's*

Everything came up roses when **BARBARA WARE FEATHERSTONE**, *Idaho*, hosted the third Rose McGill Tea in her home. With a suggested gift amount of \$25, these members of the **LAKE WASHINGTON ALUMNAE ASSOCIATION** were able to raise \$220 for a gift to the Kappa Kappa Gamma Foundation for the Rose McGill Confidential Aid program. Barbara set a beautiful table with Spode Billingsley Rose china and each guest had a special menu, Rose McGill bookmark and tea bag from the Foundation. And Barbara placed a vase with a single rose at each place and a ribbon-tied bar of rose-scented soap for each guest. Barbara and others took turns reading thank-you notes from anonymous recipients. "Kappas helping Kappas is what this is all about," says Barbara.



In the front row: **HELEN HOLLIDAY ROSS**, *Illinois*, **NANCY WALTERS PITTENGER**, *Washington*, **KAY MOSHER ANDERSON**, *New Mexico*, and in the back row **MARCIA GRANT FRENCH**, *Michigan*, **BARBARA WARE FEATHERSTONE**, *Idaho*, **CAROLYN BEARG JOHNSON**, *Kansas State*, **TONI CLINE ALLYNE**, *Cornell* and **KATHY BARR WAKEFIELD**, *Tulsa*.



The **CHARLESTON ALUMNAE ASSOCIATION** met at Charleston Place for tea on March 10, 2012. Charleston participated in the Holiday Sharing program this year and after they sent their items to their recipient, they had \$100 left over, which they sent to the Kappa Kappa Gamma Foundation for the Rose McGill Confidential Aid program.





**GISELLE SCHOENLE PATTON**, Villanova, Rose McGill Holiday Sharing chairman for the **PHILADELPHIA ALUMNAE ASSOCIATION**, shows how much Kappa cares. Forty-three children in need from Family Services benefited from this overflowing collection of toys and gifts. In addition, the Kappas provided gifts and gift cards to a Kappa experiencing a difficult time.



**JESSICA TEETART** and **SHANNON MANGIAMELI**, Wisconsin, travel to Indianapolis and celebrate a Wisconsin Badger win at their first Big Ten Championship Football game.



1963 graduates of **GAMMA KAPPA**, William & Mary, who spent a weekend in June in their old chapter house, are pictured in the historic President's House on campus.



Sixteen sisters from **DePauw** gather in Denver to celebrate their 60th birthdays. One of the members presented everyone with a blue beaded bracelet with a dangling heart engraved "Kappa 60."





Members of the **MILWAUKEE ALUMNAE ASSOCIATION** participate in a literacy event at Silver Spring Neighborhood Center in Milwaukee, reading to more than 50 children ages 3-15. Each child received two donated books.



Kappas in the **CHICAGO LOOP GROUP ALUMNAE ASSOCIATION** celebrate television history by attending the Oprah Show farewell party.



*Kansas State* alumnae **JENNIFER BEARDSLEY FALES**, Regional Director of Alumnae, and **MARILYN NICHOLS BULLOCK**, 2004 Fraternity Loyalty Award Recipient, during **GAMMA ALPHA's** 95th anniversary reunion.



Members of the **CASPER, WYO., ALUMNAE ASSOCIATION** enjoy breakfast together, sharing stories of their days at **GAMMA OMICRON, Wyoming**.



The 1951 pledge class of **BETA DELTA, Michigan**, returned to Ann Arbor for the 60th anniversary of their initiation.

Pictured (front): **CENTES MORRILL PAPES, DOROTHY HAMMETT ALLEN, SUSAN RIGGS GUISE, MARY LONGMAID ERWIN.** (Back) **GEORGIA SHAMBES, KAY BROWN ERLEY, JOAN KLEINPELL MACGILLIVRAY, SANDY REYNOLDS OLDS, JILL PREDMORE BEACH and MARTHA SEGER.**



Members of **BETA OMICRON, Tulane**, join the **NEW ORLEANS ALUMNAE ASSOCIATION** at a joint event to benefit Reading Is Fundamental and the local Communities in Schools. A national RIF representative attended, pictured on far right.



**MEREDITH MAWBEY TAKALA, Massachusetts**, and **NANCY VOORHEES LAITNER, Purdue**, visit Omaha Beach as part of a Kappa Travels trip to Normandy.





Breckenridge, Colo., is the site of a vacation for four friends from **GAMMA ETA**, *Washington State*. From left are **BEV CHENEY THOMSON**, **CATHY GILES WHITE**, **BETTY WOLFE BENDIX** and **DORIS DUSKIN LIPPERT**.



**ASHLEY DEAN**, *North Carolina*, with her mom, **THERESA MAIURI DEAN**, *LSU*, enjoy visiting her cousin, **ALLISON MAIURI**, *North Carolina*, in the African country of Namibia.

Friends from **UPSILON**, *Northwestern*, gather at their chapter house for their 50th reunion.



The **PHILADELPHIA ALUMNAE ASSOCIATION FOUNDATION**, in conjunction with their Gourmet Group, planned and served a dinner for more than 30 families at the Ronald McDonald House. With Ronald are **BRITTANY PAYN MCGINLEY**, *Babson*, **GEORGI CLYMER**, *Penn State*, **MARLENE SKOKOL DAVIS**, *Penn State* and **ERIN STOTTLEMYER GOLD**, *Riverside*.



**KATHERINE "KIT" CAPLES KIMBALL, SUZANNE ROFFLER-TARLOV, JOAN SORENSON SULLIVAN, BARBARA WARE FEATHERSTONE and BARBARA FEATHERSTONE SPARKS**, all *Beta Kappa*, serve on the College of Letters, Arts and Social Sciences Dean's Advancement Council at the University of Idaho. These Kappas help identify and acquire resources and financial support for the college, serve as advocates, as well as give advice on programs.

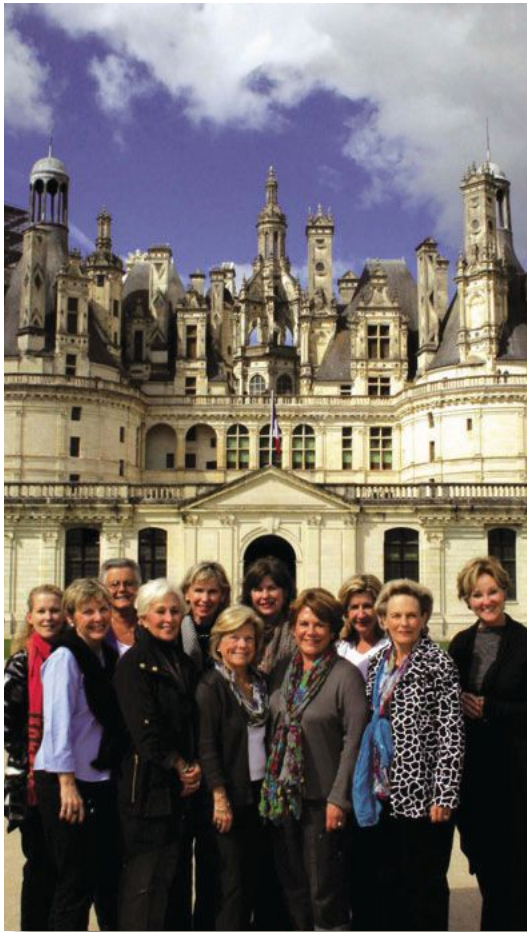


An everyday hero is **JENNY FIRTH**, *Vanderbilt*, who has run in multiple Boston Marathons to raise money for research. Jenny is motivated to honor three siblings (two sisters and one brother) whom she lost to different forms of cancer within a three-year period. She also serves on the board of directors of the Dana Farber Foundation committee for the Boston Marathon.

Members of the **DENISON HOUSE BOARD** show off the banner they received as an end-of-year gift from the chapter. Holding their appreciation gift are **TINA BRAYER TRACY**, *Bowling Green*, **NANCY JOHNSON SMITH**, *Denison*, **ANN STAFFORD TRUESDELL**, *Ohio Wesleyan*, **JANE GLAZER KOPPENHOEFER**, *Denison*, **KITTY MORTON EPLER**, *Denison* and **LISA DEL ROSARIO-JAYNE**, *Bowling Green*.







Kappas from **EPSILON ALPHA**, TCU, enjoy Provence, the Loire Valley and Paris during a two-week reunion trip in France.




The **ANNAPOLIS ALUMNAE ASSOCIATION** has renewed a sweet tradition started by adviser **PAULINE "POLLY" TOMLIN BEALL**, *George Washington*, who would invite girls from **GAMMA PSI CHAPTER**, *Maryland*, to her home for homemade shortcake with homegrown peaches. They gathered peaches at a local orchard, made shortcakes and enjoyed sisterhood with Gamma Psi alumnae in the Maryland area, many of whom had not seen one another for 30 years.



Friends from the 1961 pledge class of **BETA MU**, *Colorado*, visited Asheville, N.C. They stand in front of the childhood home of Thomas Wolfe, portrayed in his novel, *Look Homeward Angel*.




# Key Achievements

 **LINDSAY BOSE**, Kansas State, is the recipient of the “40 under 40” award given by Consulting-Specifying Engineer, a monthly publication serving the nonresidential building industry. The award recognizes 40 building industry professionals age 40 and younger who stand out in their academic, professional, personal and community achievements. A senior electrical engineer and project manager at Primera Engineers, Ltd., Lindsay’s love for math and architecture began early, building Barbie dream houses and cities with Legos. At Primera, she has worked on medium- and low-voltage distribution energy systems, a LEED Silver project. She served as an electrical engineer at the Chicago Museum of Science and Industry for the U-505 Submarine Exhibit, which involved moving a German submarine inside the museum, earning her the 2005 Project of the Year Award. Lindsay mentors students to encourage them to pursue a career in her field.



 **CINDY JOHNS MENDOZA**, Mississippi, has been appointed associate judge for the 360th Family District Court in Fort Worth, Texas. Her judicial duties include issuing temporary orders while divorces are pending, enforcing decrees and handling all cases that come before her family court. Prior to her appointment to the bench, Cindy practiced law in Fort Worth for seven years and has maintained her nursing license for more than 33 years. Cindy is part of a large Kappa family, including her mother, **PATRICIA KEAST JOHNS**, Iowa State; her sister, **ELIZABETH JOHNS SMITH**, Texas Tech; and two Texas A&M daughters, **MANDI JOST JOHNSON** and **BROOKE MENDOZA DELUNA**.

 **DORIS BUFFETT**, George Washington, has been named 2012 Virginian of the Year by the Virginia Press Association. This honor for the “Sunshine Lady” philanthropist comes on the heels of her recognition as a Kappa Alumnae Achievement Award recipient at the 69th Biennial Kappa Convention in June. Doris has given nearly \$120 million away through her Sunshine Lady Foundation. Doris is the first Kappa to win this award, but is in the company of such luminaries as singer June Carter Cash, author Patricia Cornwell and Katherine Graham, publisher, The Washington Post. Doris, the sister of investor Warren Buffett, tells her story in the book, “Giving It All Away,” written by Michael Zitz. For more information visit [www.sunshinelady.org](http://www.sunshinelady.org).





**LORI McDONALD**, Utah, has been recognized for excellence in counseling by the University of Utah where she is the associate dean of students. Awarded the Philip and Miriam Perlman Excellence in Counseling Award in April, Lori has worked in student counseling since 1997. She spends 80 percent of her time advising students and advocating for those facing challenges and behavioral difficulties. A member of the **SALT LAKE CITY and WASATCH MOUNTAINS ALUMNAE**

**ASSOCIATIONS**, she served as a Regional Director of Chapters from 2006–2010 and is currently the first alternate delegate on the NPC delegation.



**DANNYE GIBSON ROMINE POWELL**, Florida State, a writer for the Charlotte Observer, has won the 2011 Randall Jarrell Poetry Competition for her poem “I Am the Girl.” Chosen from nearly 100 entries, Dannye’s poem will be considered for publication in the literary journal The Crucible. She has twice won the Brockman-Campbell Award for best book of poetry by a North Carolinian. Her published books include *A Necklace of Bees*, (University of Arkansas Press, 2008) and *Parting the Curtains: Interviews with Southern Writers*. A charter member of **EPSILON ZETA**, Florida State, she belongs to the **CHARLOTTE ALUMNAE ASSOCIATION** and is past president of the **RALEIGH ALUMNAE ASSOCIATION**.



**MARY FILMAN FERGUSON-PARÈ**, Toronto, has been appointed a member of the Order of Canada, the highest civilian honor in Canada. She recently retired as vice president, professional affairs and chief nurse executive at University Health Network, which comprises Toronto General, Toronto Western and Princess Margaret Hospitals. An adjunct faculty member at York and Trent University Schools of Nursing, she is also a recipient of the Distinguished Alumni Award, University of Toronto Faculty of Nursing, the Award of Excellence in Nursing Leadership, Ontario Hospital Association and the National Nursing Leadership Award, Canadian College of Healthcare Leaders.

**SAMANTHA CARROLL**, Centre College, joins the Sayre School in Lexington, Ky., as Director of Development. Most recently she served as the director of annual giving for University of Kentucky’s College of Medicine. She also has served as associate director for the American Diabetes Association in Louisville. Samantha is a member of the **LOUISVILLE ALUMNAE ASSOCIATION**, the Junior League of Louisville, Younger Women’s Club of Louisville, and the Centre College Alumni Association Board of Directors.



Twenty alumnae of **THETA**, Missouri, celebrated with sisters receiving honors at the Missouri Sports Hall of Fame in Springfield. **ELLEN FUSON PORT**, right, was the only woman inducted with 12 men for her golfing career, winning four Mid-America championships and a successful coaching career. She attended Missouri on a tennis scholarship. **MARYANNE ONOFRIO H’DOUBLER**, center, was on the dais with Ellen, as MaryAnne’s father, Al, received a posthumous award for ten years as head football coach of the fighting Mizzou Tigers. **TAMARA GILMORE SUNDVOLD**, left, was in the spotlight beside her husband, Jon, who played on four winning Tiger basketball teams from 1979–1982.



# Daytona Kappas meet “Abigail Adams” at a Colonial Tea Party

Members of the GREATER DAYTONA (FLA.) ALUMNAE ASSOCIATION began the new year with a “Colonial Tea Party” in January, with Abigail Adams the guest of honor, sharing her life, letters and anecdotes, enacted by her direct descendent, **JOAN ADAMS FENTON**, *Penn State*.

The party was hosted by **DIANE WEST VAN WERT**, *William & Mary*, and her husband Leon, who did extensive research on food authentic to the 18th and 19th centuries. “Chef Leon” created a Colonial menu, featuring items such as Abigail Adams’ New England Smoked Salmon, Martha Washington’s Virginia Ham Delectables, Dolley Madison’s Chicken Fricassee, Williamsburg’s Shields’s Tavern Coconut Special and Jamestown’s minced opossum tenderloins, (which supposedly tasted like chicken.) Several Kappas dressed in Colonial costume and served punch, tea cakes and other sweets.

Joan, who performs a three-part presentation on the life of her ancestor, Abigail Adams, is much in demand by historical groups, museums and schools. Originally performed as a one-woman show, she now has a retired actor who plays John Adams, and her husband, Billy, plays John Quincy Adams, in a new trilogy. 🗝️



**DIANE WEST VAN WERT**, *William & Mary*, left, with **JOAN ADAMS FENTON**, *Penn State*, a direct descendent of Abigail Adams, who gave a three-part presentation of Abigail’s life at a Colonial Tea Party for the Daytona area Kappas. With them is Leon Van Wert, Diane’s husband, who researched Colonial recipes and created the menu.

Enjoying the Colonial Tea Party for members of the **GREATER DAYTONA ALUMNAE ASSOCIATION** are left to right, **CONNIE AHO HUGHES**, *Wisconsin*, **MARSHA GIESECKE LUNDY**, *Missouri*, **JOAN ADAMS FENTON**, *Penn State*, a direct descendent of Abigail Adams and hostess, **DIANE WEST VAN WERT**, *William & Mary*.







The **SARASOTA/MANATEE COUNTIES ALUMNAE ASSOCIATION** recently raised its lifetime contribution to the Kappa Kappa Gamma Foundation to the \$50,000 mark with proceeds from the annual fashion show and luncheon. From left are **JEAN CRAIG McCULLOUGH**, *Missouri*, President, with **SALLY STONER IRWIN**, *Northwestern*, **KATHY CURTIS CHARLTON**, *Colorado State*, **CAROL CONNER FRANKLIN**, *Indiana*, and **MARCIA MAHLAN SEMAN**, *Bucknell*.

## "Fashion Me Pretty" Style Show Benefits the Kappa Foundation

**N**ine Kappas belonging to the **SARASOTA-MANATEE COUNTIES ALUMNAE ASSOCIATION**, dressed in the latest spring fashions from Dillard's, strutted their stuff during "Fashion Me Pretty," their 10th annual Fashion Show and Luncheon, which over the years has contributed nearly \$50,000 to the Kappa Kappa Gamma Foundation.

What began as a modest monthly luncheon for members only, the event has grown in popularity among the Kappas and their friends, boasting an audience of nearly 300 women, now hosted in the local Lakewood Ranch Country Club.

A popular part of the event among the attendees is the raffling of beautifully decorated gift baskets, some of which are donated by members, some from local country clubs filled with golf packages, and others holding various items given by area businesses.

The association contributes 75 percent of the fashion show profits to the Kappa Foundation. In 2010, a quarter went to scholarships, a quarter to Leadership Academy and half was designated unrestricted, allowing the Foundation to use the money where it was needed most. In 2011, their donation was divided between the Stewart House Roof Fund, Rose McGill and unrestricted. This year, the association board voted to donate enough of this year's fashion show proceeds to the Foundation to raise their lifetime contribution to the \$50,000 mark.

The other 25 percent of the show's profits goes back into the community to local charities, which can change from year to year but has included Meals on Wheels, Habitat for Humanity and Baby Basics, a charity that distributes disposable diapers to needy families. 🗝️



**ROXIE GARSKE JERDE**, *Iowa*, models a spring outfit from Dillard's during an annual fashion show and luncheon fundraiser presented by the **SARASOTA/MANATEE ALUMNAE ASSOCIATION**.



# Houston Alumnae Association Hosts Jane Pauley

*More than 425 guests  
celebrated Kappa Kappa  
Gamma at Houston  
Alumnae Association's  
biennial KKG Charitable  
Foundation holiday  
luncheon at River  
Oaks Country Club in  
Houston.*



**H**ouston writer and humorist **LOUISE BAYLESS PARSLEY**, *Texas*, and journalist **JANE PAULEY**, *Indiana*, shared humorous anecdotes, words of wisdom and remembrances of Kappa days. Labeled as America's sweetheart, Jane Pauley spoke about the transitions of life, encouraging listeners to look beyond our comfort zones to become the best individuals possible. Jane's and Louise's enthusiasm, sense of humor and kind spirits made a day of celebrating Kappa even more meaningful.

Kappa alumnae in the greater Houston area not only purchased tickets to support the luncheon, they generously bought one-of-a-kind pieces provided by the Houston Alumnae Stitchers. The Holiday Luncheon, typically given during the biennial Home Tour Pilgrimage week (in even years), was presented during the odd year for the first time since the luncheon's inception. Co-Chairmen **KIMBERLY GABRIEL DOMINY**, *Baylor*, **NANCY NETHERTON ELLISON**, *Texas*, and **MARTHA MOODY JOHNSON**, *Texas A&M*, not only enjoyed working together to plan the luncheon, they did it in less than five months. "The Foundation Board decided to move the luncheon to the "off" year from the Pilgrimage so that Kappas can enjoy fellowship and friendships each year," says Nancy Ellison.


"We wanted the luncheon to be a day of celebration, a time to enjoy being together and an opportunity to raise funds for the 2012 Pilgrimage efforts. The luncheon exceeded all those expectations and more!" Martha says.



"I have chaired this event before, but it will always be memorable because of Jane Pauley joining us and because of the tremendous support of the Houston Kappas," Kimberly says.

The 2010 Home Tour Pilgrimage funds, exceeding \$250,000, enabled 11 nonprofit organizations to fulfill requests and meet worthy needs, including: Boys & Girls Country of Houston, The Brookwood Community, Heroes for Children, LIFE Houston, Literacy Advance, The Rose (breast center), The Institute for Rehabilitation and Research, Wellsprings Village, Yellowstone Academy, as well as college scholarships through Houston Alumnae Panhellenic Foundation and the Kappa Kappa Gamma Foundation.

Beginning in 1941, the focus of the Houston Kappa Kappa Gamma Foundation's biennial Pilgrimage Home Tour fundraising event has been to give a gift to the Houston area. Since its inception, Kappas have donated more than \$2.5 million to help make a difference in the lives of people in the community. All funds generated from the luncheon supported the 2012 Pilgrimage fundraising efforts.

The 2012 Pilgrimage Home Tour will be held from Nov. 30–Dec. 2. For additional information about the Pilgrimage, visit [houstonkappas.org](http://houstonkappas.org). 



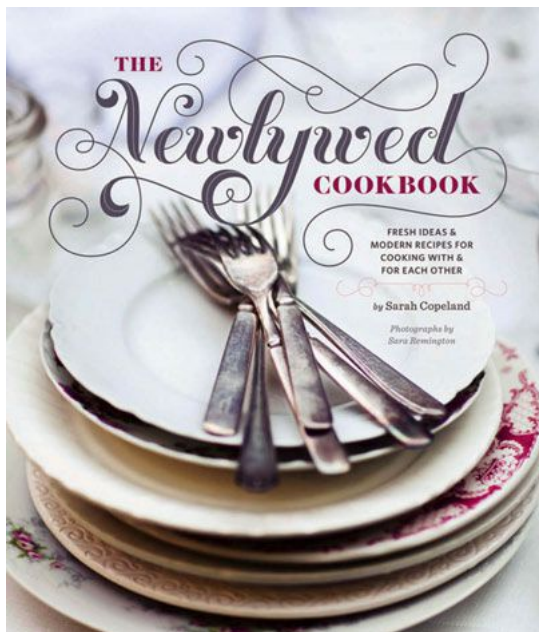
Jane Pauley spoke at Houston's Holiday Luncheon this year. With Jane are Kimberly Dominy, Martha Johnson and Nancy Ellison.



# Arts & Letters

## *The Newlywed Cookbook*

By SARAH COPELAND, *Missouri*



► SARAH COPELAND, *Missouri*, has given readers, beginner cooks and sous chefs alike a delicious treat. Her first book, *The Newlywed Cookbook: Fresh Ideas & Modern Recipes for Cooking with & for Each Other*, is a wide blend of homemade and heirloom dishes.

Aesthetically, the book is divine. Gorgeous photography by Sara Remington is paired with a charming layout. Sarah's sister, JENNY GODDARD, *Drake*, designed the "Sips" tag on the iced tea in the "Embellishments: Snacks, Sauces & Sips to Enlighten the Table" section. Sarah's knowledge on seasonable fruits and vegetables, organics, picking out meat, how to stock one's kitchen, what kind of tools to have on hand is abundantly given.

Sarah is a self-described "writer, urban gardener, passionate cook and curator of good living." She is a six-year veteran of The Food Network and co-founder (and former spokesperson) for their charitable initiative, Good Food Gardens. She thrives on "homegrown veggies, stinky cheeses, chocolate cake" and her little family, made up of her husband, Andras, and their baby, Greta.

As a bride-to-be myself, and one who does not cook often, I found myself time and time again with this cookbook, pouring over it with fascination and hope. Sarah gives just enough instruction and insight into fresher ingredients, preparation advice and alternatives for individual recipes. For meals, she makes specific suggestions of what to serve the dish with, be it the wine, bread, or greens. The Shrimp Saganaki turned out so well that I decided to try another recipe.

This book is wonderful, warm, and inviting. It reads like a good conversation and gives encouragement through Sarah's perpetual optimism and care toward both cooking and life.

Chronicle Books, [www.edibleliving.com](http://www.edibleliving.com).



### **Watermelon, Pistachio & Baby Greens Salad**

Serves 2 to 4

Watermelon is always bursting with life, and if you love it plain on a hot summer day with your legs swinging off a dock, you might agree it's best left as nature intended. This salad pays its respects to watermelon's best qualities and complements its juice and sweetness with the salty crunch of pistachios. It makes an excellent first course or light lunch or dinner all on its own and is the perfect place to show off a handful of spicy arugula and fresh herbs you grew yourself.

2 small heads butter lettuce, torn  
 Heaping handful of young arugula/rocket  
 Heaping handful of mâche, purslane, or watercress  
 1/2 medium seedless watermelon (about 4 lb/1.8 kg), cut in wedges and rind removed  
 1 small handful fresh chocolate mint, peppermint, or spearmint leaves, torn  
 1 tsp. snipped fresh chives  
 Coarse white, grey, or pink sea salt  
 Freshly ground black pepper  
 4 tbsp. best-quality extra-virgin olive oil  
 2 to 4 oz/55 to 115 g tangy goat cheese, such as Selles-sur-Cher or Crottin if available, at room temperature

Divide the butter lettuce between two or four dinner plates or one large platter. Distribute the arugula/rocket and mâche between the plates, then arrange watermelon wedges on each plate. Garnish all the salads with torn mint and chives, and season liberally with sea salt and black pepper. Drizzle with your finest extra-virgin olive oil and top with pieces of fresh goat cheese. Serve straight from the garden or crisp and cold from the crisper drawer.

*Recipe courtesy of Sarah Copeland and The Newlywed Cookbook*

## More From the Amateur Gourmet

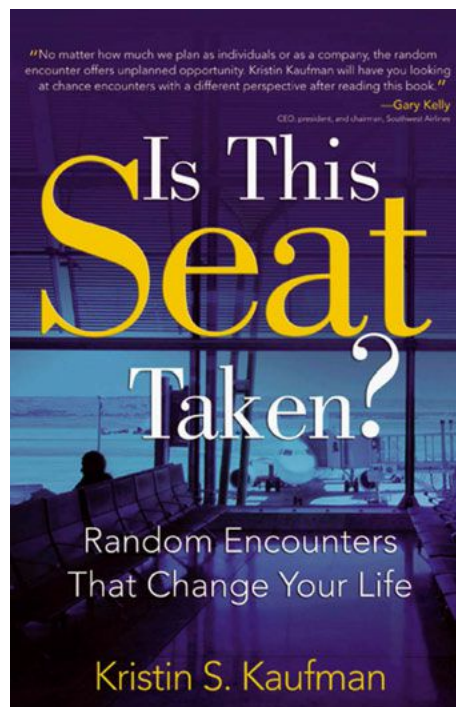
By VIRGINIA ANDING LA CHARITÉ,  
*William & Mary*

► This sequel to *The Amateur Gourmet* offers more help and recipes for home cooks. Gini Anding, better known to Kappas as VIRGINIA ANDING LA CHARITÉ, *William & Mary*, seeks to "... offer the home cook an insight into the world of gourmet cooking, turning the kitchen into an art studio."

Well organized, the book is geared more to a busy home cook on a tight schedule, rather than one who enjoys spending more time in the kitchen. A collection of simple recipes containing few ingredients results in easy to prepare recipes that can be adjusted for larger parties or smaller dinners.

A former professor of French studies, past recipient of Kappa's Alumnae Achievement Award and awards from the French government for her contributions to French culture, Gini has spent time studying French cooking techniques and has created ways of simplifying them for the home cook.

Published by iUniverse



## Is This Seat Taken

By KRISTIN S. KAUFMAN,  
*Arkansas*

► Random encounters can change everything. Yet texts, tweets, webinars, PowerPoints, overbooked schedules and demanding technologies have become the 21st century distractions that keep us from powerful insights and the incidental connections the world has to offer.

In her first book, *Is This Seat Taken?*, KRISTIN S. KAUFMAN, *Arkansas*, is on a mission to change all that. Through her travels over the years, she has collected many personal stories of incidental meetings that turned out to be anything but incidental. The leadership and life lessons shared in the book have become a compass on her road to alignment, fulfillment and success.

You can read one of Kristin's stories of an incidental meeting on a business flight in a chapter preview on her website, [www.kristinkauffman.com](http://www.kristinkauffman.com).

Brown Book Publishing Company



## *The Bird Book: Alma's Story*

By **PATSY BREDWICK LEVANG**, *North Dakota State*

Review by **MELISSE CAMPBELL**, *Mississippi*

► Entrusted with a binder full of hand-drawn birds, **PATSY BREDWICK LEVANG**, *North Dakota State*, set out to tell the story of one woman's quiet life and her love for birds.

Alma was raised on a farm in western Minnesota, and at some point in her life, withdrew to her room and was cared for by her family. Her love of nature, particularly birds, occupied her in creating a visual guide between 1960 and 1980. She drew the birds from her bedroom window and kept her images on loose-leaf pages in a metal-ring binder. There is one bird per page, 90 in total.

When Alma passed away in 1986 with no heirs in a family of seven siblings, two of the sisters left her beloved binder of drawings to their cousin Patsy, who was intrigued by the drawings and descriptions. They thought she might finish the book. Patsy felt Alma's work was complete and chose to publish it to make it available to the world.

Alma wrote careful prose in her observations to accompany her drawings.

She wrote, "I wish I could go out of my room and be with you, Robin friend . . . I see so many things that they do not think I notice."

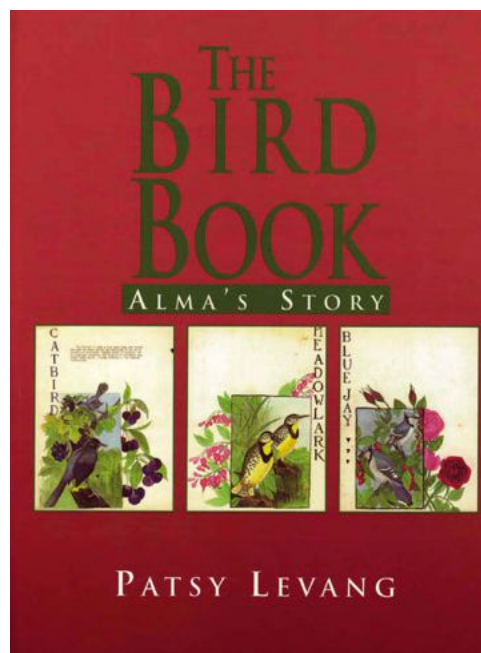
Patsy writes, "Whatever seemed to keep Alma from interacting with the world also gave her the inspiration to live her life through the birds."

A life of solace, the simple life to which so many aspire to, was lived in observation of the birds and nature by a reclusive woman who inspires.

A faithful trustee in many ways, Patsy is the former President of the Kappa Kappa Gamma Foundation. Born and raised in western North Dakota, she graduated from North Dakota State with a degree in psychology. She attended graduate school at the University of Kansas. In addition to volunteering for Kappa, Patsy has been a teacher, an administrator, and a counselor during the past 30 years. She lives in Keene, N.D., with her husband. They have three children and five grandchildren.

For more, visit [almasbirdbook.com](http://almasbirdbook.com).

Book review by **MELISSE CAMPBELL**, *Mississippi*, fine artist, writer and antiques curator for Campbell's Melange.



# More From Kappa Authors

---

## ***A Woman's Secret for Confident Living: Becoming Who God Made You To Be***

**KAROL KINDER LADD**, *Baylor* (Harvest House Publishers)

Karol is the best-selling author of more than 25 books, including *The Power of a Positive Mom* and *Thrive, Don't Simply Survive* (Simon & Schuster). Karol is known as "The Positive Lady." She speaks at women's and corporate events and is a frequent guest on radio and television. Karol lives in Dallas with husband, Curt, and daughters, Grace and Joy.

## ***Chasing Superwoman: A Working Mom's Adventures in Life and Faith***

**SUSAN DiMICKELE**, *Miami (Ohio)*

Susan is a partner in a law firm as well as the mother of three young children. For women who are not stay-at-home mothers, Susan can give insight into the life of a woman who both loves time with her children and thrives in a work atmosphere. Susan's *Working Mom's Daily Devotional* is found at [www.susandimickele.com](http://www.susandimickele.com). Susan lives with her family in Columbus, Ohio.

## ***When Your Child Is Being Bullied: Real Solutions for Parents, Educators and Other Professionals***

**JACQUI MARCHESE DiMARCO**, *Illinois*, & M.K. Newman

Bullies, be gone! In 125 pages, Jacqui Marchese DiMarco and Marie Newman give the reader personal experiences, examples of effective methods of dealing with bullies at the personal and school administration levels, organizations to help, and lessons learned. Both Jacqui and Marie's children were bullied, as was Jacqui when she was younger, and they bring in a fresh perspective in how to deal with the bullies and the parents of bullies, who oftentimes will not take action to correct their child's behavior. For more, visit [www.solutionsforbullying.com](http://www.solutionsforbullying.com).

## ***Tea Pie, Love and Reality: A Collection of Memoir Essays***

**SALLY HALL PETERSEN**, *Nebraska* (Petersen Publications)

The dedication of the book is to "those who sit and stare and wonder." This small collection of vignettes shows a charming view of the world by Sally, a former journalist, columnist and essayist, who lives with her husband, Jim, also a writer. She and her husband own a publishing company. For more, visit [www.PetersonPublications.com](http://www.PetersonPublications.com).

## ***Raising a Happy Spirit: The Inner Wisdom of Parenting***

**JULIANNA LYDDON**, *M.C., Kansas*

This tiny book focuses on 10 intuitive pathways of parenting "that can be incorporated into most parenting styles for the purpose of enriching a child's spirit." Julianna acknowledges that raising a child isn't easy, and the way a child is treated by his or her parents is fundamental in forming the child's self-image and foundation for growth. She includes multiple resources for parents, including adoption and parenting children with special needs.

A specialist in marriage, family and child therapy, Julianna is married with three children.

## ***I Don't Wear a Suit!***

**VICTORIA SEITZ**, *Kansas State*

Image consultant VICTORIA SEITZ, *Kansas State*, helps women and men deal with today's variety of options for work attire. Whether your company has a casual dress-down policy or requires a more conservative approach, Victoria's book offers suggestions to outfit yourself for success, maximize your assets and minimize problem areas while looking your best.



**COLORADO STATE. EPSILON BETA** members *Robin Beam* and *Rita Walton* set up for a Valentines Dance for senior citizens at Dayton Place in Denver.



**UC MERCED. ETA XI CHAPTER** members from Kappa's three-year old chapter learn leadership skills during an education workshop.

**JOHN CARROLL AND FLORIDA. A group of ETA ZETA CHAPTER** members met several **EPSILON PHI CHAPTER** members during spring break on a Carnival Cruise and bonded while singing karaoke.



**FURMAN.** Bright floral KKG letters welcome potential new members during the third round of Recruitment at **ETA ALPHA CHAPTER**.







**HILLSDALE.** KAPPA CHAPTER's new members celebrate finding their home on campus.



**GEORGIA.** Members Kelly Holt and Jordan Bell recruited "Hairy Dog," the UGA mascot, to welcome new member Margaret Hancock on Bid Day.



**OHIO WESLEYAN.** RHO<sup>Δ</sup> CHAPTER actives and new members enjoy getting better acquainted and singing "Oh Pat" on Bid Day.



**ALABAMA.** This enthusiastic group of GAMMA PI members read to children at Alberta Elementary School in support of Reading Is Fundamental.





## Alabama Chapter Helps Build a School in Zambia

—By **CHRISTINE ROBERTSON**, *Syracuse*, Collegiate News Editor

**T**raveling to Africa to help underprivileged children had been on **ALEXIS BUSHONG's**, *Alabama*, bucket list for many years. After being inspired by many stories, one in particular resonated. A family friend told Alexis of her experience with an organization called Camp LIFE, a week-long camp held throughout the summer for children in Zambia, Africa, where almost 10 percent of the population is an orphaned child.

Once Alexis made up her mind, she persuaded her family of six to join the effort. That year, the Bushong clan reached out to friends and family for support. By July, they had collected clothing, blankets, basic necessities and school supplies for the children.

The group packed eighteen 50-pound duffle bags into three large SUVs and set out for the airport to commence

a 30-hour journey to Zambia. The Bushong family joined nearly 500 other volunteers for two weeks leading groups of children—singing songs, playing games and handing out the gifts and supplies they brought.

After one summer helping at the camp that serves 7,000 orphans, Alexis knew she had to return. After a second summer in Zambia, they decided to build a school in a neighborhood where they had volunteered.

The family has raised money through T-shirt sales and donations to help fund the \$70,000 it costs for the building and upkeep of the school. A Ping-Pong tournament will help raise the last of the money to open the school this year. Alexis' Kappa sisters from **GAMMA PI CHAPTER, Alabama**, have contributed funds and supplies for the school. For more, visit [familylegacy.com/camp-life/](http://familylegacy.com/camp-life/)

# Every Single One

NINA BAHADUR, Princeton, has published a collection of poetry, *Every Single One* by Flipped Eye Press. While a senior at Princeton this past year, she opened with a reading from her poetry for an event featuring poet James Richardson and author Jonathan Franzen. Born in London, Nina has been writing poetry since she was a child.

## Q: How did *Every Single One* come to be published?

**A:** *I have always loved reading and writing, and I have always written creatively in my spare time. When I got to high school, I began to focus on poetry. I was fortunate enough to have a number of teachers and mentors encourage me to enter competitions and submit poems for publication in literary magazines. I never thought that other people might be interested in what I have to say, so this was entirely new for me. I had always written for myself, and saw poetry as a deeply personal way of understanding, processing, and documenting the world around me.*

*When I was in my senior year, a poem of mine placed third in the Christopher Tower Poetry Competition (a British competition for young poets). A poet named Nii Ayikwei Parkes from Flipped Eye Publishing read my poem in the competition's pamphlet and contacted me. He asked me to write a short collection and publish it with Flipped Eye. It came out of nowhere, and was the proverbial "dream come true" for me.*

## Q: What was the process of writing the collection like?

**A:** *The time between being asked to write a collection with Flipped Eye and actually holding the finished book in my hand was almost three years. I worked closely with an editor, the incomparable Jacob Sam-La Rose, who guided me through the process of creating a cohesive collection of work. It was very difficult for me to balance my studies at Princeton with serious writing, so oftentimes poetry would be put on the back burner. I had never written with any sense of discipline before, but waiting around for inspiration to strike was not a productive way to spend my time. I learned a lot about how to motivate myself to write, and how to find inspiration under everyday circumstances.*

## Q: What advice do you have for would-be authors?

**A:** *Whether or not you are writing for yourself or for an audience, and whether or not your work is published or popular, what you have to say is meaningful. I encourage others to actively support young female authors and independent presses, in the hope that you will be similarly supported one day!*



*In a more practical sense, send your work out to publications and websites. Go to readings or events in your hometown, and take advantage of any resources your university might offer if you are still a student—classes, workshops and writers' retreats. Finally, never stop writing, and don't get discouraged. If it is what you want to do, make it happen.*

## Share Your Story . . .

The Key collects stories for this magazine, but also for kappa.org, as well as Kappa's blog and social media. Help us tell the story of our members: Upload photos and story ideas to [uploads.kappa.org](http://uploads.kappa.org) or email [thekey@kkg.org](mailto:thekey@kkg.org). For best results, **do not print** digital images. Do upload or email the digital file.

### Tips for Photos


Set your camera to take large images. If you are not certain how to do this, look in your camera settings and choose the setting that allows you to take fewer photos.

- ▶ **Do not resize** or optimize your images.
- ▶ **Do not crop.** If your photo needs cropping, note it when submitting.
- ▶ **Best photos:** outside lighting or well-lit indoors, avoid lights shining from behind, show action or creative composition, no beverages, no hand signs; owl eyes and such are overdone.
- ▶ **Send chapter photos** of philanthropy, sisterhood, academics, hobbies, events, KKG and campus spirit, Panhellenic spirit, Advisory Board/House Board, behind the scenes (like study night or exam prep), and campus PR. **More ideas:** chapter interacting with alumnae, new member events, leaders on campus, mentoring, RIF, Fireside, Initiation brunch. Less posed is better.



*Marye-Kelley*  
EST. 1991

BEAUTIFUL WASTEPAPER BASKETS & TISSUE BOXES



OVER 400 DESIGNS  
TO CHOOSE FROM

WWW.MARYE-KELLEY.COM  
*We are Kappa owned and operated.*



**University of Oklahoma**  
**Beta Theta Chapter**  
**Centennial**  
**April 11 - 13, 2014**  
*Save the Date*  
*More Later*

***Our Beautiful Irises on Blank Notecards***

*Reproductions of delicate watercolor art by retired Kappa artist, Pat Brangle. Each card is hand cut and assembled. They are blank on the inside so you may write your own special message.*

***An assortment of 10 cards with envelopes: \$24. (includes shipping & taxes)***

*Until I am able to set up a website I must accept mail orders only. Please send your check or money order to:*  
***Pat Brangle***  
***P.O.Box 8098***  
***St. Louis, MO., 63156-8098***



*(Please include your phone number with your order) Thank you very much. ♥*



[kappag.ahitravel.com](http://kappag.ahitravel.com)



## Kappa Travels Great Getaways!

### Italy's Lake District

Sept. 25-Oct. 3 \$2,995

### China and the Yangtze River

Oct. 8-21 from \$3,795

### East Africa

Oct. 22-Nov. 5 \$5,895

### Plan Ahead for 2013!

**Ireland, May 13-21** \$2,995

**Spain:** Barcelona and San Sebastian,  
**June 2-11,** \$2,995

**Adriatic Antiquities:** Venice to Athens,  
**June 11-24,** \$4,395

**Grand Danube Passage,**  
**Sept. 6-20,** \$4,295

**Tuscany Cortona, Oct. 9-17,** \$2,795

**Cruise South America,**  
**Dec. 8-22,** \$3,795

Bring friends and family on one of these spectacular Kappa Travels trips! Contact **DALE BRUBECK, William & Mary** at **614-888-0685** or [dbrubeck@columbus.rr.com](mailto:dbrubeck@columbus.rr.com) or call Alumni Holiday Travel (AHI) **800-323-7373**.  
[Kappag.ahitravel.com](http://Kappag.ahitravel.com)

## Have you moved? Changed your name or email address?

Visit [www.kappa.org](http://www.kappa.org) to update  
your profile or email [kkghq@kkg.org](mailto:kkghq@kkg.org).  
Please include your maiden name  
and chapter.



### JOIN OUR PARTY!!

discover the fun and the rewards  
when you join the ORIENT EXPRESSED  
Home Show Team

apply on-line @ [www.orientexpressed.com](http://www.orientexpressed.com)

orient expressed • 888.856.3948 • [www.orientexpressed.com](http://www.orientexpressed.com)



Send all address changes  
and member deaths to:  
KKΓ Headquarters  
P.O. Box 38 • Columbus, OH 43216-0038  
866-554-1870 • Email: kkgHQ@kkg.org

## the Key Source [www.buykappa.com](http://www.buykappa.com)

800-441-3877

309 691 3877

Deep group discounts!

Check out  
web specials!



Velocity shorts in  
ice blue or navy \$26  
sz. XS -XL  
Flannel drawstring  
pants \$28 (see web  
for styles, colors)



kappa applique  
long sleeve \$28  
more colors avail



1/4 zip crest \$48  
more crest wear  
on line S2 S-XL



pewter  
pendant  
& chain \$12

New sterling pendants  
with adjustable choker  
kkg necklace: \$32  
fleur or key \$28

lavalier  
\$15 plus  
chain \$18



ring \$34.00  
whole sizes



sterling heart  
charm \$17

We're exclusively Kappa!



beach towel \$23



Lily Pulitzer tumbler \$16  
i-phone case \$28



LETTER  
SHIRTS

short sleeve \$23, long sleeve \$27, crewneck \$32  
hoods, sweatpants on line. Many variations and  
group pricing is always available!

2012 ornament  
available August 15!



new! thin sole ribbon flip FLOPS  
\$19.95 sizes S-M-L



ever popular flip flops in solid  
or polka dot \$19.95 S2 5-11



microfiber tote \$21



canvas tote \$12



keyring \$7.50



engraved footed  
floral box \$23



pearl & sterling  
mom charm \$17.60



NEW alder frames, 4 x 6 \$24  
or 8 x 10 \$39 Choice of themes

NEW  
MEMBER  
FIRST  
ORDER  
DISCOUNT

IF YOU LIKE IT, PUT YOUR NAME ON IT! WE PERSONALIZE ANY OF THESE:



plush blanket \$28 Add name  
\$6 first line, \$5 additional

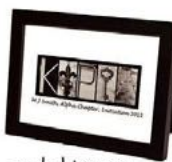


letter  
jersey  
\$19

add name on back: \$7.60  
more colors on line



fleur  
jersey  
\$22



symbol kappa  
photo in frame \$19  
add a line: \$6

kappa  
hat  
\$16



Hat with  
name: \$18



Bone china iris box \$18 Add name and  
date for \$3.50

Products & prices may change at any time. Email: [keysources@ameritech.net](mailto:keysources@ameritech.net). Call 309-691-3877. Address: 1723 W. Detweiller Dr. Peoria, IL 61615.  
MIN PHONE ORDER \$25 Shipping additional. For special pricing for chapters, reunions, any events, call or email for quotations.

