

The Key

Official Organ of Kappa Kappa Gamma

Volume XXXVII

DECEMBER, 1920

Number 4

Board of Editors

Editor-in-chief—Mrs. Howard B. Mullin . . . 111 West 11th Street, New York City.
Editor's Deputy—Rosalie B. Geer . . . 241 Washington Ave., Brooklyn, N. Y.
Alumnae Editor—Mrs. Frank A. Kemp, Jr. . . . 135 Grant St., Denver, Colo.
Department Editor—Mrs. Everett Warner . . . 508 E. Adams St., Muncie, Ind.
Exchange Editor—Eleanor Aldridge . . . 72 St. James Pl., Brooklyn, N. Y.
Business Manager—Mrs. Parke R. Kolbe . . . 250 East Buchtel Ave., Akron, Ohio.

CONTENTS

Frontispiece, Portrait of Mrs. Tade Hartsuff Kuhns	
..... <i>Elizabeth Gowdy Baker</i>	
Kappa Paints a Kappa	289
Kappas Known to Fame	<i>Lalah Randle Warner</i> 290
Editorial Comment	302
Hoots	<i>Helen Bower</i> 304
Parthenon	307
Chapter Pictures	310
Chapter Letters	339
The Alumnæ	<i>Estelle Kyle Kemp</i> 351
In Memoriam	374
Directory of Meetings	376



Entered as second-class matter November 3, 1910, at the postoffice at Menasha, Wis., under the act of March 3, 1879.

Acceptance for mailing at special rate of postage provided for in section 1103, Act of October 3, 1917, authorized July 31, 1918.



Subscription price, one dollar per year.

Published four times a year in February, April, October, and December, by George Banta, Official Printer of Kappa Kappa Gamma, 450-454 Ahnaip Street, Menasha, Wisconsin.



Material intended for publication must reach the editor before the first of January, March, September, and November.

FRATERNITY DIRECTORY

GRAND COUNCIL

Grand President—SARAH B. HARRIS, Northwestern University, School of Oratory, Evanston, Ill.
Grand Vice-president—MRS. FRANK A. KEMP, JR., 135 Grant St., Denver, Colo.
Grand Secretary—DELLA LAWRENCE, 3710 27th St., Bryan, Tex.
Grand Treasurer—GERTRUDE KING WOOD, 814 Second Pl., Plainfield, N. J.
Grand Registrar—CATHERINE BURNSIDE, 624 Tillamook St., Portland, Ore.
Editor of THE KEY—MRS. HOWARD B. MULLIN, 111 W. 11th St., New York, N. Y.

CHAIRMEN

Historian—MRS. A. H. ROTH, 629 Myrtle St., Erie, Pa.
Chairman Student Aid Fund—MRS. RICHARD H. GODDARD, 401 E. 11th Ave., Denver, Colo.
Custodian of the Badge—MRS. THEODORE WESTERMANN, 31 Kraft Ave., Bronxville, N. Y.
Chairman Committee on Scholastic Standing—MRS. CHARLES WILLIAM LEAPHART, Missoula, Mont.
Custodian of Songbook—CAROLYN MCGOWAN, 3258 Observatory Rd., Cincinnati, Ohio.

DEPUTIES

Grand President's Deputy—FLORENCE I. CLANEY, 717 Junior Terrace, Chicago, Ill.
Grand Vice-president's Deputy—MRS. F. W. SHELTON, Watkins, Colo.
Grand Secretary's Deputy—FRANCES VAN ZANDT, 662 Henderson St., Fort Worth, Tex.
Grand Treasurer's Deputy—FANNY CHEYNEY, 2 Harold St., Plainfield, N. J.
Grand Registrar's Deputy—MARION REED, 94 E. 17th St., Portland, Ore.
Editor's Deputy—ROSALIE B. GEER, 241 Washington Ave., Brooklyn, N. Y.

CORRESPONDING SECRETARIES

ALPHA PROVINCE

President—MRS. RAYMOND STORR, Pottstown, Pa.
Vice-president—EVELYN WHY, 242 E. Highland Ave., Chestnut Hill, Philadelphia, Pa.
BOSTON (Phi), Dorothea Fall, 551 Boylston St., Boston, Mass.
ADELPHI COLLEGE (Beta Sigma), Helen Ringe, 166 Clarkson St., Brooklyn, N. Y.
PENNSYLVANIA (Beta Alpha), Margaret A. Alcott, 3433 Walnut St., Philadelphia, Pa.
SWARTHMORE (Beta Iota), Carolien H. White, Swarthmore College, Swarthmore, Pa.

BETA PROVINCE

President—MRS. HELEN PROBST ABBOT, 54 Harper St., Rochester, N. Y.
Vice-president—MRS. GLADYS ELDETT BUSH, 224 Gordon Ave., Syracuse, N. Y.
CORNELL (Psi), Irene Heliel, 111 Catherine St., Ithaca, N. Y.
SYRACUSE (Beta Tau), Carol Bozovsky, 907 Walnut Ave., Syracuse, N. Y.
ST. LAWRENCE (Beta Beta), Helen Lutes, Kappa Lodge, Canton, N. Y.
TORONTO (Beta Psi), Regina M. Milliken, Annesley Hall, Queen's Park, Toronto, Canada.

GAMMA PROVINCE

President—MRS. FRANK A. SPRAGUE, 220 N. Murray St., Madison, Wis.
Vice-president—CAROLYN MCGOWAN, 3258 Observatory Road, Cincinnati, Ohio.
ALLEGHENY (Gamma Rho), Marian Morrison, 533 Randolph St., Meadville, Pa.
PITTSBURGH (Gamma Epsilon), Katherine Johnson, 844 N. Lincoln Ave. N. S., Pittsburgh, Pa.
WEST VIRGINIA (Beta Upsilon), Mary Guiber, 120 High St., Morgantown, W. Va.
MUNICIPAL UNIVERSITY OF AKRON (Lambda), Lois A. Waltz, 938 Princeton St., Akron, Ohio.
OHIO STATE (Beta Nu), Anita M. Seeds, 301 17th Ave., Columbus, Ohio.
CINCINNATI (Beta Rho), Helen Guhman, 240 Hosea Ave., Cincinnati, Ohio.

DELTA PROVINCE

President—MRS. FRANK DONNER, Greencastle, Ind.
Vice-president—MRS. WILL LOUDEN, 519 N. Walnut St., Bloomington, Ind.
DE PAUW (Iota), Naomi Gum, Kappa House, Corner of Indiana and Poplar Streets, Greencastle, Ind.
BUTLER (Mu), Louise Clark, 2103 Broadway, Indianapolis, Ind.
INDIANA STATE (Delta), Jeanette Brill, Kappa House, Bloomington, Ind.
KENTUCKY (Beta Chi), Ella N. Brown, 465 Woodland Ave., Lexington, Ky.
PURDUE (Gamma Delta), Elsie Richardson, 124 Marsteller St., W. Lafayette, Ind.

EPSILON PROVINCE

President—HELEN D. AUSTIN, 1115 Washington St., Hudson, Mich.
Vice-president—MILDRED ARMSTRONG, 335 Merrick St., Adrian, Mich.
MICHIGAN (Beta Delta), Ruth Goodhue, 1316 Geddes Ave., Ann Arbor, Mich.
ADRIAN (Xi), Celia M. Brainerd, 121 N. Locust St., Adrian, Mich.
HILLSDALE (Kappa), Wilhelmena Robinson, Kappa House, Hillsdale, Mich.

ZETA PROVINCE

President—MRS. HELEN W. DU BARRE, 3103 Wells St., Milwaukee, Wis.
Vice-president—CORA WALLACE, 507 W. University Ave., Champaign, Ill.
MINNESOTA (Chi), Katherine Shenehon, 329 10th Ave. S. E., Minneapolis, Minn.
WISCONSIN (Eta), Louise Macfadden, 425 N. Park St., Madison, Wis.
NORTHWESTERN (Upsilon), Frances Emerson, 913 Forest Ave., Evanston, Ill.
ILLINOIS WESLEYAN (Epsilon), Helen Niehaus, Kappa Hall, Ill. Wes. Univ., Bloomington, Ill.
ILLINOIS (Beta Lambda), Meryle Pratt, 212 Chalmers St., Champaign, Ill.

ETA PROVINCE

President—DOROTHY MUSSER, 715 College St., Iowa City, Iowa.
Vice-president—MRS. VIRGINIA L. ROGERS, Abilene, Kan.
IOWA (Beta Zeta), Anne M. Lichty, Kappa House, Iowa City, Iowa.
KANSAS STATE AGRICULTURAL COLLEGE (Gamma Alpha), Norine Weddle, 311 N. 14th St., Manhattan, Kan.
NEBRASKA (Sigma), Dorothy Lyon, 312 N. 14th St., Lincoln, Neb.
KANSAS STATE UNIVERSITY (Omega), Alberta Mack, 701 Tennessee St., Lawrence, Kan.
COLORADO (Beta Mu), Elizabeth N. Partridge, 1221 University Ave., Boulder, Colo.
ARIZONA (Gamma Zeta), Miriam McCaffery, 636 N. Park Ave., Tucson, Ariz.
NEW MEXICO (Gamma Beta), Lorena Burton, Kappa Kappa Gamma Box, Univ. of New Mexico, Albuquerque, N. M.

THETA PROVINCE

President—KATHERINE SEARCY, Public Library, Waco, Tex.
President—RUTH KLINGLESMTIH, Chickasha, Okla.
MISSOURI (Theta), Catherine Kelley, 600 Rollins St., Columbia, Mo.
OKLAHOMA STATE (Beta Theta), Caroline Copeland, Kappa House, Norman, Okla.
TEXAS STATE (Beta Xi), Margaret S. Carter, 707 W. 24th St., Austin, Tex.
TULANE (Beta Omicron), Eleanor Gould, Josephine Louise House, Newcomb College.

IOTA PROVINCE

President—LUSETTA LUBKEN, Boise, Idaho.
Vice-president—EVA COFFEE, 101 S. 5th St., West Missoula, Mont.
MONTANA (Beta Phi), Catherine Sanders, 630 University Ave., Missoula, Mont.
WASHINGTON (Beta Pi), Elizabeth Z. McColloch, 4720 University Blvd., Seattle, Wash.
OREGON (Beta Omega), Eleanor E. Spall, 754 13th Ave. E., Eugene, Ore.
IDAHO (Beta Kappa), Gladys Hastie, Kappa Kappa Gamma House, Moscow, Idaho.
WHITMAN (Gamma Gamma), Sidonie Pyle, 305 Melrose St., Walla Walla, Wash.
WASHINGTON STATE COLLEGE (Gamma Eta), Dorothy Zaring, 614 Campus Ave., Pullman, Wash.

KAPPA PROVINCE

President—GEORGIA WISEMAN, San Mateo, Cal.
Vice-president—MRS. DOROTHY DAVY GROSE, San José, Cal.
CALIFORNIA (Pi), Helen Barry, 2725 Channing Way, Berkeley, Cal.
STANFORD (Beta Eta), Anna Judge, Stanford University, California.

Chairman of the National Panhellenic Congress—MRS. ETHEL HAYWARD WESTON
(Sigma Kappa), 20 Prospect Ave., Rumford, Maine.

ALUMNAE ASSOCIATIONS

ALPHA PROVINCE

Boston Association—Genevieve Elder, 51 Ashland St., Medford, Mass.
New York Association—Cora P. Emery, 5 Nassau St., New York, N. Y.
Philadelphia Association—President, Alice M. Rodman, 1011 S. 48th St., Philadelphia, Pa.; Secretary, Florence Pumyea, 245 S. 38th St., Philadelphia, Pa.
Beta Iota Association—Mrs. Geo. L. Corse, 4622 Asylum Rd., Frankford, Philadelphia, Pa.
Beta Sigma Association—Ines Pando, 676 6th St., Brooklyn, N. Y.

BETA PROVINCE

Syracuse Association—Florence R. Knapp, 410 Westcott St., Syracuse, N. Y.
Western New York Association—Mrs. Henry J. Schufer, Jr., 465 Harvard St., Rochester, N. Y.
St. Lawrence Association—Grace Lynde, Canton, N. Y.

GAMMA PROVINCE

Columbus Association—Mrs. Earl Jones, 1334 E. Lory St., Columbus, Ohio.
Cincinnati Association—President, Mrs. George E. Smith, 3414 Whitfield Ave., Cincinnati, Ohio; Secretary, Ruth B. Guhman, 148 Woolper Ave., Cincinnati, Ohio.
Cleveland Association—Mrs. Kurt Seelbach, 1601 Hollyrood Road, Cleveland, Ohio.
Pittsburgh Association—Mrs. Earl R. Loomis, 400 S. Lang Ave., Pittsburgh, Pa.
Morgantown, W. Va., Association—Mrs. R. R. McFall, Grand St., Morgantown, W. Va.
Lambda Club (Akron)—Mrs. James Van Vechten, Amelia Apt., Akron, Ohio.
Beta Gamma Club—Florence McClure, Larwell St., Wooster, Ohio.
Toledo Association—Mrs. F. E. Duddy, 2538 Maplewood Ave., Toledo, Ohio.

DELTA PROVINCE

Franklin Nu Association—Mrs. F. W. Erther, 846 W. 30th St., Indianapolis, Ind.
Indianapolis Association—Mrs. Charles R. Jones, 228 E. 13th St., Indianapolis, Ind.
Bloomington, Indiana, Association—Mrs. Alice A. Cosler, Bloomington, Ind.
South Bend Association—Mrs. Elizabeth G. Seebirt, 634 N. Lafayette Blvd., South Bend, Ind.
Iota Club—Mrs. Helen O. Sigmund, Crawfordsville, Ind.
Falls City Club—Miss Helen Horine, 1522 Edgewood Pl., Louisville, Ky.
Mu Club—Elsie R. Felt, 64 N. Irvington Ave., Indianapolis, Ind.
Lafayette Association—Grace Louth Buskirk, Route D, Lafayette, Ind.
Muncie Association—Ruth H. Stone, 911 West Drive, Woodruff Pl., Muncie, Ind.
Bluffton Association—Bess Sales, Bluffton, Ind.

EPSILON PROVINCE

Adrian Club—M. Louise Hood, 405 S. Winter St. Adrian, Mich.
Detroit Association—Helen Bower, 3087 West Grand Boulevard, Detroit, Mich.

ZETA PROVINCE

Chicago Association—Margaret Frankhauser, 5517 Winthrop Ave., Chicago, Ill.
North Shore Association—Miss Kathryn Goss, 905 Forest Ave., Evanston, Ill.
Champaign-Urbana Association—Jane Craig, Champaign, Ill.
Madison Club—Elsa Fauerbach, 938 Spaight St., Madison, Wis.
Milwaukee Association—Miss Amy Allen, 126 19th St., Milwaukee, Wis.
Bloomington, Illinois, Association—Mrs. Charlotte L. Probasco, 907 N. Main St., Bloomington, Ill.
Minnesota Club—Mrs. Edwin Brosn, 1929 Tremont Ave., Minneapolis, Minn.

ETA PROVINCE

St. Louis Association—Adelaide Simonds, 6254 Arundel Pl., St. Louis, Mo.
Kansas City Association—Grace Borland, 4136 Mill Creek Blvd., Kansas City, Mo.
Denver Association—Elfrida V. VanMeter, 1326 Columbine St., Denver, Colo.
Cedar Rapids Association—Mrs. Mary Van Cushman, 1815 3rd Ave. East., Cedar Rapids, Iowa.
Iowa City Association—Mrs. W. O. Coast, 1112 Church St., Iowa City, Iowa.
Tri City Club—Ethel McKown, 2424 Brady St., Davenport, Iowa.
Lincoln Association—Mrs. Samuel C. Waugh, 2501 Bradfield Drive, Lincoln, Neb.
Lawrence Association—Alice M. Guenther, 641 Ohio St., Lawrence, Kan.
Omaha Association—Mrs. Frank Mead, 5013 Capitol Ave., Omaha, Neb.
Gamma Alpha Club—Hazel Groff, Nortonville, Kan.
St. Joseph Club—Dorothy Vaut, 602 N. 25th St., St. Joseph, Mo.
Topeka Club—Mrs. A. H. Winter, 1274 Plass Ave., Topeka, Kan.
Des Moines Association—Irene Townsend, 604 54th St., Des Moines, Iowa.
Hutchinson Club—Beulah Davis, 1005 North Adams St., Hutchinson, Kan.

THETA PROVINCE

Dallas Association—Mrs. W. A. Dealey, 3524 Dickson Ave., Dallas, Texas.
Newcomb Club—Mrs. John Pratt, 1230 State St., New Orleans, La.
Austin Alumnae Association—Miss Sue K. Campbell, 2208 San Antonio St., Austin, Tex.
Houston Club—Mrs. Fred Parker, St. James Apts., Houston, Tex.
Palestine Association—Mrs. Webb Wright, 310 E. Kolstad St., Palestine, Tex.
Oklahoma Association—Iris Baughman, 730 E. 9th St., Oklahoma City, Okla.
Tulsa Club—Mrs. S. M. Williams, Jr., 3 Manhattan Court, Tulsa, Okla.

IOTA PROVINCE

Montana Association—Mary Elrod, 205 S. 5th St. E., Missoula, Mont.
Washington Association—Miss Celia D. Shelton, 2904 Franklin Ave., Seattle, Wash.
Portland Association—Mrs. Carl Neal, 536 East 57th, N. Portland, Ore.
Walla Walla Association—Marie Miller, 515 Newell St., Walla Walla, Wash.

KAPPA PROVINCE

Los Angeles Association—Mrs. Jack Van Dorn, 2221 W. 21st St., Los Angeles, Cal.
Pi Association—Mrs. H. W. Tomlinson, 588 Jean St., Oakland, Cal.
Beta Eta Association—Mrs. Gloucester Willis, 2550 Gough St., San Francisco, Cal.



PORTRAIT OF MRS. TADE HARTSUFF KUHN, FIRST
GRAND PRESIDENT, BY ELIZABETH GOWDY BAKER

THE KEY

VOLUME XXXVII

DECEMBER, 1920

NUMBER 4

KAPPA PAINTS A KAPPA

The photo-engraving on the opposite page is of a portrait from life by Elizabeth Gowdy Baker, in her studio in New York City. It is notable in several ways—it is an excellent likeness of Mrs. Tade Hartsuff Kuhns, it is in color a charming picture and it is the largest work of art ever done in pure aquarelle. Both the subject and the artist are proud to wear the little gold key.

This portrait is to be shown in the loan collection of Mrs. Baker's works, in Cleveland at the Gage Galleries from January 3 to 15, inclusive, and from the twentieth to February 3 in the Loring Andrews Galleries, Cincinnati, Ohio. The exhibit should be seen by all who can do so.

Mrs. (D. B.) Baker has achieved distinction as an artist, especially as a painter of portraits though she also paints landscapes and marines with results which would alone make her well known. She uses either oils or pure water color.

In the serious use of water color she stands alone among the artists of the world. Among the many portraits by Mrs. Baker are those of Mrs. James A. Stillman, who was Fifi Potter, Mrs. James S. Clarkson, Mrs. C. B. Nash of Omaha, Mrs. McCaw of Cincinnati, James J. Hill (of whom she painted two, for his two sons), John A. Wallace the great engineer of the Panama Canal and other vast undertakings, Dr. William Tod Helmuth and many others.

Though well known in America, with portraits in every large city, Mrs. Baker is even better known in England and France for her accomplishments. She is wonderfully facile and masterful as well as a tireless worker.

Mrs. Baker is a great painter and women should be proud that she has accomplished in the mastery of the most difficult of all mediums (pure water color) what no man has succeeded in doing.

KAPPAS KNOWN TO FAME

LALAH RANDLE WARNER, *Department Editor*

Dear Kappas:

The Editor-in-chief has insisted—and I resume! I tried to resign but she wouldn't let me! She said some very flattering things about how much you enjoyed my department, and, being susceptible to flattery, I capitulated. I hope you all aren't sorry. The material seems endless—you are doing such interesting things. And I really enjoy hunting you up—if only you give me a hint. But you must help me. For I am the mother of a little family of babies and, in the flesh, do not go far afield. But how I travel with my pen and typewriter—everywhere! Please let me hear about the things you and your Kappa friends are doing.

In October, 1912, I began editing the Alumnae Department of this magazine and in February, 1913, this department of Kappas Known to Fame first appeared. In the years which have ensued the following Kappas have been enrolled—a really distinguished company. Aren't you proud of them? And doesn't it inspire you active girls to do your very best—for the future honor of Kappa?

FEBRUARY, 1913

Mabell S. C. Smith, *Phi*, writer.

Eleanor Louise Guernsey, *Mu*, sculptor.

Sarah Matilda Hobson, *Phi*, physician.

E. Jean Nelson Penfield, *Iota*, lawyer and parliamentarian.

Mary Kingsbury Simkhovitch, *Phi*, social worker, director of Greenwich Settlement House, New York City.

MAY, 1913

Katherine Jewell Everts, *Chi*, reader and actress.

Ora Murray Hodges, *Mu*, first lady of Kansas, educational and social leader.

Eva Dean, *Lambda*, artist.

Jessie Cassidy Saunders, *Psi*, architect.

Dorothy Canfield Fisher, *Beta Nu*, writer.

OCTOBER, 1913

Louise Pound, *Sigma*, professor, author, tennis champion.
 Cora Bennet Stephenson, *Iota*, writer.
 Margaret Craig, *Chi*, portrait photographer.
 Ella Adams Moore, *Iota*, professor and vocational director.

DECEMBER, 1913

Jessica Garretson Cosgrove, *Beta Epsilon*, lawyer and educator.
 Winifred Adele Marshall, *Beta Sigma*, interpretive singer and actress.
 Katharine Sprague Alvord, *Beta Delta*, vocational advisor for university women.
 Mignon Talbot, *Beta Nu*, geologist.
 Minnie L. Russel Thomas, *Theta*, educator, lecturer, writer.

FEBRUARY, 1914—KAPPA WIVES OF COLLEGE PRESIDENTS

Lydia Voris Kolbe, *Lambda*, Municipal University of Akron.
 Jenny Armstrong Howe, *Mu*, Butler College.
 Florence Berry Bowman, *Beta Zeta*, *Beta Eta*, *Pi*, University of Iowa.
 Frances Ball Mauck, *Kappa*, Hillsdale College.

MAY, 1914

Bessie L. Putnam, *Gamma Rho*, writer.
 Sara Cone Bryant, *Phi*, writer for children.
 Louise Bolard More, *Gamma Rho*, social worker and writer.
 Emily Ray Gregory, *Beta Alpha*, biologist.
 Ruthana Paxson, *Beta Zeta*, national and foreign work, Y. W. C. A. secretary.

DECEMBER, 1914

Alice Duer Miller, *Beta Epsilon*, writer.
 Irene Hazard Gerlinger, *Pi*, first woman regent of the University of Oregon.
 Emily Dunning Barringer, *Psi*, physician.

FEBRUARY, 1915

Harriet Lloyd Doane, *Beta Tau*, physician.
 Roselle Lathrop Shields, *Beta Epsilon*, Director of American Art Students' League of Paris, linguist.

MAY, 1915

Marion Craig Wentworth, *Chi*, reader and dramatic writer.
 Lou Henry Hoover, *Beta Eta*, scientist, writer, social worker.
 Laura Rinkle Johnson, *Beta Delta*, writer of verse and books for children.
 Winifred Gray Gracie, *Upsilon*, actress, reader and dramatic producer.
 Mabel Austin Southard, *Chi*, physician, pathologist, professor.

OCTOBER, 1915

- Laura E. Lockwood, *Omega*, professor, editor of the classics, writer.
 Charlotte Gibbs Baker, *Beta Lambda*, professor of domestic science, authority and writer on textiles.
 Helen Guthrie Miller, *Theta*, social and suffrage worker, pure food expert.

DECEMBER, 1915

- Bernice Andrews Fernow, *Psi*, miniature painter.
 Mabel Simis Ulrich, *Psi*, physician and lecturer.
 Elizabeth Gowdy Baker, *Alpha*, portrait painter.
 Margaret Loomis Stecker, *Psi*, industrial expert and government investigator.

FEBRUARY, 1916

- Martha Tarbell, *Iota*, writer and editor of Sunday School lesson guides.
 Elizabeth Gray Potter, *Pi*, editor and writer.
 Hazel Hotchkiss Wightman, *Pi*, national tennis champion.

OCTOBER, 1916

- Ella Alexander Boole, *Beta Gamma*, State and National W. C. T. U. officer, lecturer.
 Florence Bascom, *Eta*, geologist and editor.
 Nora Blatch DeForest, *Psi*, civil engineer and contractor.

FEBRUARY, 1917

- Lucy Allen Smart, *Beta Nu*, religious educator, impersonator of historical characters.
 Laura Clarke Rockwood, *Beta Zeta*, writer and lecturer on economics and domestic science.
 Helen Field Fischer, *Sigma*, poet.
 Edna Huestis Simpson, *Psi*, painter.

MAY, 1917—KAPPA DEANS OF WOMEN

- Virginia Gildersleeve, *Beta Epsilon*, Barnard College.
 Evelyn Wight Allan, *Beta Beta* and *Beta Eta*, Leland Stanford University.
 Katharine S. Alvord, *Beta Delta*, De Pauw University.
 Jessie Byers, *Xi*, Adrian College.
 Elizabeth F. Fox, *Beta Epsilon*, University of Oregon.
 Mary E. Sweeney, *Beta Chi*, University of Kentucky.
 Mary Blossom Davidson, *Pi*, University of California.
 Helen McClintock, *Gamma Rho*, Geneva College.

FEBRUARY, 1918

- Alice Moore French, *Nu*, First War Mother of Indiana, one of the originators of the idea.
 Edith Y. Locke, *Sigma*, advertising writer.
 Charlotte Prentiss Hardin, *Beta Omicron*, poet.
 Florence Harrison, *Chi*, actress and Red Cross worker in France.

MAY, 1918

Florence Lee Whitman, *Beta Beta*, musician, organizer, social worker.

Josephine Sarles Simpson, *Eta*, public school and civic expert, an executive and reformer.

Cleora Clark Wheeler, *Chi*, social service, Y. W. C. A. secretary, designer of bookplates and gift cards, vocational expert.

DECEMBER, 1918

Marie Sellars, *Beta Iota*, editor, government organizer of farm women and children.

Ethel Farnsworth, *Chi*, artist and illustrator.

FEBRUARY, 1919

Connie Baer Mason, *Omega*, executive, editor, President of the Federated Clubs of New Mexico.

Lillian E. Dimmitt, *Epsilon*, dean of women, professor.

FEBRUARY, 1920

Mary Harriman Rumsey, *Beta Epsilon*, social and executive work, eugenics authority.

Helen Knox, *Beta Xi*, club worker, writer.

MAY, 1920

Mary Morgan Purdon, *Chi*, cataloguer and statistician.

Lucia Elizabeth Heaton, *Beta Beta*, physician.

Mercy Bowen, *Chi*, portrait photographer.

Isn't that a wonderful roll of honor? And there are probably others equally worthy, if we could only find them out. Won't you help us?

And here are three new ones for you to feast upon!

Will Kappa writers and their friends please notify this editor, Mrs. Everett Warner, 508 East Adams Street, Muncie, Indiana, of all published works by or about Kappas. The department, Kappas in Book and Magazine, needs your assistance. Announcement will be made of all published works written by or about Kappas, and brief reviews will be given where complimentary copies of books are sent.

HOPE McDONALD

Chi, 1894

On the banks of the great Father of Waters, in the pretty town of Winona, on January 10, 1872, was born Hope McDonald, one of the women who has brought many honors to Kappa Kappa Gamma.



HOPE MCDONALD

Early in her life, her parents moved to St. Paul, and there she received her primary education in the public schools, graduating from the St. Paul High School as salutatorian of her class.

A little later her home was moved to Minneapolis whose community life has been greatly enriched ever since by her beautiful and capable service.

In the University of Minnesota from which she received her bachelor's degree in 1894, she was chosen quickly to be a member of Kappa Kappa Gamma, and the quality of her scholarship was recognized by her election to Phi Beta Kappa.

She was made Assistant Professor of History in the University but her temperament was that of the artist, and after a few years she resigned that position to take up work in the New York School of Art in the department of Applied Design.

Extended travel made a happy finish to her education, for not only did the art and history of the old world enrich a mind so well prepared to receive what it had to give, but the manners, customs and ideals of the various nationalities made their appeal to her sympathetic nature.

Minnesota is one of the seven states of the union most thickly populated by foreigners, so that her knowledge of, and interest in the resources of the foreign population of her own city and state, was at once put to practical use.

She became active in bringing to pass annual exhibits and sales of the art crafts of the foreign peoples of the state in Minneapolis, and instituting traveling exhibits of the same throughout Minnesota. She was president of the Arts and Crafts Society of Minneapolis, and secretary of her Fine Arts Society. She was one of the charter members and the first secretary of the Woman's Club of Minneapolis, and her influence was deeply felt there in the Department of Arts and Letters.

She had early been led to see, she used to say, that there were many to answer the calls of Philanthropy, and Civic Duty, but few to answer the call of Beauty, and so she had adopted Beauty as her child; while never deaf to this call, in these later years she felt the call of Justice to be even more insistent, and she took up wholeheartedly the work for woman suffrage. As president of the Hennepin County Woman Suffrage Association, her gentleness and courtesy, as well as her gifts in organization and



HARRIET BLAKESLEE WALLACE AND GRANDCHILD, ELEANOR BLAKESLEE WELLS

execution carried to a successful termination the work of that organization.

Her war work was Americanization of foreigners—a work for which few are so adequately prepared. She sees the same work now, in time of peace, no less a patriotic duty than in time of war, and she is engaged in it at the present time. She is first vice-president of the Woman's Community Council, whose efforts lie largely with the foreign population, and chairman of Americanization for the Minnesota League of Women Voters. Her special interest lies in reaching the foreign mother in her home.

Few have accomplished as much for the public welfare as has Hope McDonald, but fewer still have been those who have wrought in her spirit, for she has worked as "one who desires to sow no seed for her own harvesting, but desires only to sow the seed the fruit of which shall feed the world."

JOSEPHINE SARLES-SIMPSON, *Eta*.

HARRIET BLAKESLEE WALLACE

Beta Tau, 1884

"Harriet Blakeslee Wallace? Why I know her. She is one of the founders of Beta Tau."

"That may be. It sounds historic. But I went swimming with her in Lake Oneida last summer."

"She's a grandmother. Her little granddaughter is getting into the upper grades in school now and is growing more and more like her mother and her grandmother."

"I can't imagine her doing anything but buying supplies for that big hospital of her husband's for which she seems to be purchasing agent. When I dropped in recently she was up to her ears in circulars about laundry machinery. Just then her phone rang and I gathered that the hospital matron was giving her dimensions for some new tray doilies that were to be ordered."

"Well she knows more about the scholarship of active Kappas than anyone in the world. For many years she figured out the exact rating of every K K T in every college."

"And she is an accomplished musician. She plays and she sings. Oh yes and she reads and speaks French."

Of course these two women were her guests, the older one a Kappa who knew of that side of Mrs. Wallace, her avocation, her Kappahood, and the younger one a nurse who saw her daily in her vocation of doing everything that could be done about the hospital to leave Dr. Wallace free for his surgery.

Everyone knows her hospitality. She takes into her home her friends, who are legion, for she has the gift of friendship, and her friends' friends, all simply as she tries to make them feel that they do her honor by coming under her roof. This very hospitality is the only window through which the world sees into her great heart and her diversified interests. While abiding in her home one sees what a perfect wife she is, what a wonderful mother, for she has a big D. K. E. son now in Government service, and she had, as every Kappa knows, a beautiful daughter Ella Wallace Wells, who wrote our Kappa Symphony. It's Ella's sunbeam of a daughter who is now the joy of the home.

When Mrs. Wells was taken from this earth, her college Kappa class who had been very close together took Mrs. Wallace in her place, and she attends their get-togethers.

Years ago at an initiation banquet I heard Mrs. Wallace say: "She is the greatest who serves the most." Measured by this high standard she is the greatest woman I know. She is a mother to every Beta Tau, and also a nationally-minded Kappa.

HARRIETT CURTIS GAYLORD, *Beta Tau*.

ANNA HARBOTTLE WHITTIC

Beta Tau, 1895

Anna Harbottle Whittic is a noted woman in Syracuse and Central New York. She has long been prominent in civic and political affairs, and her work as a founder of the Women's Congress of Syracuse is especially noteworthy.

This is a growing organization of the most cultured and best thinking women of the city. The present membership numbers one hundred and eighty. Its purpose is to provide a common center for non-partisan political information, to stimulate general interest in, and give information upon matters of public welfare and to coöperate in the betterment of the commonwealth. This organization has become a power in the community largely through Mrs. Whittic's efforts.



ANNA HARBOTTLE WHITTIC

She is a graduate of Syracuse University, taking the degree of A.B. in 1895, and that of A.M. (in Political and Social Science) in 1896. She afterward pursued the study of social philosophy and won a scholarship in competition with three hundred college graduates at Columbia University. She has always been a great student and possesses a marvellous fund of information on all world movements—in politics, economics, religions and education.

In 1903 she married Lieber E. Whittic, an attorney of Syracuse, who is prominent in civic affairs.

Mrs. Whittic was president of the Syracuse University Alumnae Club for three years, and showed unusual executive ability. The membership showed a quadruple increase during her administration.

During the New York suffrage campaigns, she was chairman for five counties.

Upon the grant of the franchise to women, she organized a series of lectures for the new voters. These lectures were conducted under the auspices of the Women Citizens' Committee, which she formed by calling together the presidents of the various women's clubs of Syracuse. These clubs sent their representatives and formed a committee of fifty, which later became the nucleus of the Women's Congress. The lectures were held in twenty-one city schools, and were given by university professors, by clergymen, and by principals of city schools, and were based on a syllabus prepared by the Head of the Department of Economics, Syracuse University. Later the committee organized the Women's Congress and elected Mrs. Whittic, Speaker (or president). The Congress adopted methods based on the parliamentary procedure of the House of Representatives at Washington, and the House rules are used. The Women's Congress even attempts to improve on the National in that all debate is strictly limited by the rules, and an official timekeeper enforces them. No snap judgments are taken. All controversial matters are referred to committees, and a public hearing is called so that both sides may have full representation.

Mrs. Whittic has been very successful in procuring many of the best speakers of the day to address the Congress. These addresses are given on the occasions of the monthly luncheons, which are

held in a large hall. The subjects presented cover unlimited range of thought and information on all matters of economics, politics and every phase of public welfare. Among the speakers have been Eugene Travis, Comptroller of New York State; Channing Rudd, President of the Federal Bank of New York City; Ogden Chisholm; Charlotte Perkins Gilman, author and lecturer.

Discussions are also held to find ways and means to improve civic conditions and results are being obtained.

The Congress has steadily held to its non-partisan status in spite of many predictions to the contrary. Mrs. Whittic has held the office of Speaker for two years and has now been unanimously elected for a third term. She has gathered about her strong and influential workers and has shown great organizing genius and withal the deepest desire for the betterment of humanity. The Congress has become a potent influence for education, both political and civic, and Mrs. Whittic is to be congratulated on the success of her work.

HARRIET BLAKESLEE WALLACE, *Beta Tau*.

EDITORIAL COMMENT

The time that you usually spend on reading articles about Kappa's travels in queer countries, without which no KEY seems complete, you may give this time to pouring over the picture gallery. When we print photographs of all our chapters, the money rolls away from the business manager so fast, that we cannot afford to give you literary treats at the same time. Next time, however, in February, what gems are in store for you! Letters from Armenia, China, France, a fiction story by a real Kappa writer. The February number will be the annual alumnae number. Send in your subscriptions early.

MORE RULES FOR KEY CORRESPONDENTS

1. No special delivery letters.
2. No special delivery letters.
3. No special delivery letters.
4. No special delivery letters.
5. No special delivery letters.

We recommend capital punishment for any human being who sends matter to be printed, written on both sides of a sheet of paper.

What becomes, in later life, of the girls who cannot follow written directions accurately? We think they are the women who marry the wrong men, go to live in the wrong towns and wear the wrong clothes.

HOW THEY WRITE THEIR LETTERS

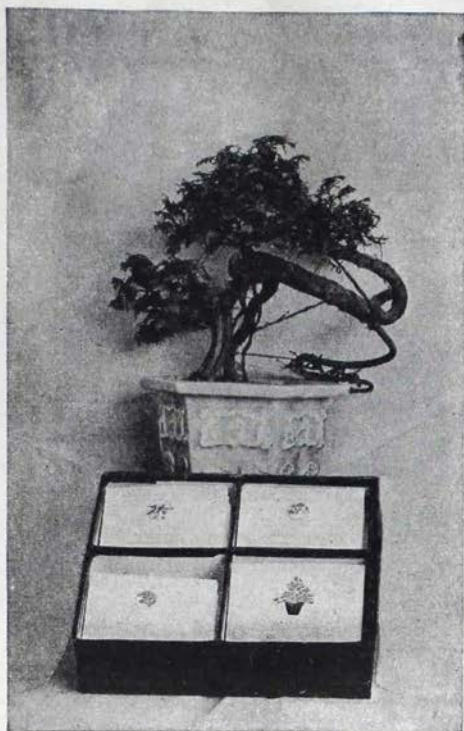
Not typed: Psi, Beta, Upsilon, Lambda, Iota, Gamma Delta, Beta Nu.

Not on official paper: Beta Psi, Beta Upsilon, Lambda, Beta Chi, Upsilon, Gamma Alpha, Gamma Beta, Beta Pi.

ON TWO SIDES OF PAPER!: Beta Upsilon, Lambda.

Not in "telegram" form, as requested: Iota, Gamma Delta, Beta Zeta, Gamma Zeta. Beta Lambda took it too literally and sent a real telegram.

Not double-spaced typing: Delta, Gamma, Beta.



Christmas cards for sale at all chapters. Proceeds for the Philanthropic Fund. Cards made by Cleora Wheeler, of Chi chapter.



HOOTED BY HELEN BOWER, *Beta Delta*

IRELAND IN THE "EVENING SKY MAP"

Kappa, teaching general science in the Highland Park high school asks students in an astronomy examination to write the name of a constellation. Student, enrolled as Kathleen Murphy, obliges with "O'Ryan."

First "bleed-hound": "I hear Susie is getting stout. Somebody told me she was having a dressmaker at the house for a week doing nothing but let out seams and waist-bands."

Second "bleed-hound": "Yes, she's getting stout, all right. Why, just the other day she was complaining to me that the only thing she can buy ready-made any more that will fit her is an umbrella."

CHRISTMAS QUERY

Do you think there'll be one Kappa
Of whom it may be said
That she *didn't* get a hanky
Drawn with nifty colored thread?

Directories are very interesting books, including telephone, city, and especially Kappa. Of course it's almost superfluous to mention the latter, since your particular copy is probably thumbed and dog-eared from constant use by this time. (As they say in vaudeville when the applause is thickest, "I thank you. Both of you!")

You have undoubtedly tried the Kappa directory in various ways since the chubby volume first came into your hands. But you found it too thick to slip under a drippy vase of flowers the way you do with those lovely thin folder effects, and it was too conspicuous to use when a castor came off the parlor davenport. It gave no personal aid as a prop for your share of the morning newspaper when friend husband or friend co-keeper-up-of-the-apartment, if any of either, monopolized the coffee pot for the purpose. Too flimsy to hold the door open with, it wasn't bulky enough to use in improvising a high chair for the company's baby, when brought.

Obviously one thing left—perhaps you opened and read it. We say "perhaps" advisedly.

Yet by this simple expedient what you can't learn about the Kappas! Until you've looked in the directory, "You don't know the half of it, dearie." For instance, who would imagine that the greatest numbers of us are tchr, hswf, and stu? Isn't that exciting? Fancy waking some bright morning to find yourself tr. nrs., or maybe just plain m!! It reminds one of the great newspapers where even in the best composing rooms a galley (not a ship) will go Greek and become "pi-ed" so that occasionally one meets in print those good old friends "shrdlu" and "etaoin." Who has not read of "Mrs. Walter Rogers and hxr sitsMer HshRDLU Shrdlu qqd Mb her sisters," etc.? But at least good Kappas may rest assured that Hoots has yet to find anyone classified in the directory as a "shrdlu."

However, you'd better look and see what you are.

LATEST JOKE FROM CAMBRIDGE, MASS. (AUTHENTIC)

"Why is a ham sandwich like a cow?"

"Because neither can climb a tree."—Aren't these Hawvawd boys just too screaming?

The Pride of the Chapter says that the headline she saw which read "Suffrage Beaten by Japanese Diet" only goes to show how a cause is always hurt by those silly hunger strikes.

JANUARY SHIVER

Ex-marshal of convention, M. V. A., reports that the manager of the Grand Hotel continued to enclose illustrated postcards of the "swimming pool" in all his post-convention correspondence. If you were at Mackinac last summer, or if you go this year, you may understand the wit, humor, and pathos of Marion's observation. "Come, and bring your bathing suit!"

SUBLIMINAL SEQUENCES

BEING THE ALLEGED UNUTTERED THOUGHTS OF A KAPPA JUNIOR AT A PARTY FOR FRESHMEN

Thank goodness, the party's started. I'm glad we had this date with that curly-haired freshman friend of Jean's. Gee, I'm so tired I almost said curly-faced. Must be just the way I look from having to smile all the time at them. I'll be glad when this is over. But of course you always have to remember how it impressed you when you were a freshman. Thank fortune I've drawn a Kappa sister to talk to for a while. Don't feel such a strain. Just naturally expect Kappa sisters to go Kappa, anyway, though I don't say family relationship ought to be an obligation to the chapter or the girl.

These chafing dish affairs with the crowd all around on the floor and the couches always make a hit. So much more "inti" like this up in someone's room, the way posters and novels describe college life. It

doesn't disappoint the freshmen. There's Polly's old banjo stunt. Always a good feature, but tiring after having heard it since one's sophomore year in high school. That glee club we used to have! Phil and Sally got married after all. Polly gets so interested, poor lamb. Her face is red as tomatoes already and her hair net's slipping. But the freshmen'll love her—that's the main thing.

For Pete's sake! Hope none of the guests notice that couch they're sitting on. Gertie borrowed a good cover, but she forgot how that old quilt hangs down from the back. Cotton stuffing shows through that torn place terribly from this angle. Wonder if the E. Z. Nus have cunning little Daisy Jones dating tonight. She's crazy about us, 'cause Phyllis' brother heard a fraternity brother of Daisy's brother say she'd told her brother she was. You can't be sure, though.

Hope there's plenty of rarebit. If anybody spills chocolate on my little blue rug that Gertie borrowed, I'll commence murder. Wish Eloise didn't act so attentive to the town girl in purple velvet. She'll frighten her if she's so cordial. And there's one of the sophomores acting like the north pole. She ought to be down in the kitchen helping, anyway. Tomorrow when I steer that blue and blue luncheon I'll see that some of those underclassmen get theirs. Who's running the chapter, anyway? I'm so tired I'd fight with the Dean's wife this minute.

I don't feel like singing. Wish I had something as easy to take this year as creative listening. Haven't even classified yet. There's Mary pitching that too low. I can't sing "Some say fraternities are *full of fol-lee*" in that key. I'm so tired—and there's chapter meeting when this is over. My feet hurt. I'm glad I haven't anyone to take home tonight. Hope Daisy Jones isn't having a good time with the E. Z. Nus, if she's there.

Oh, DEAR! Peggy's done it, all right. I knew it! Spilled cheese goo on my precious new rug. Clumsy thing! Go on, smile! *Smile!!!* Don't let her see you suffer. You've got to do it for the dear old frat. What would the freshmen think if you didn't?

Sing a song of freshmen
A dozen frats or so;
Timid little girlies
Can't tell which to go.
Wise ones will take Kappa:
Each girl knows she'll be
Happy all her life to have
A gleaming golden key.

PARTHENON

"To thine own self be true, and it must follow as the night the day, thou canst not then be false to any man." I wonder if many of us understand how true these words of Shakespeare are. When we are true to our own ideals, when we have the satisfaction of knowing that there is no deceit within, it is impossible to practise deceit without.

Truth to Self Louis Stevenson says: "To be honest, to be kind, to earn a little and to spend a little less, to make upon the whole a family happier for his presence, to renounce when that shall be necessary, and not be embittered, to keep a few friends, but these without capitulation—above all on the same grim terms to keep friends with himself. Here's a test for all that a man has of fortitude and delicacy!" Can not we Kappa sisters learn to keep friends with ourselves, and then when we have conquered, will we not find it more easy to follow the guidance Stevenson gives us and thus bring us nearer the true meaning of Kappa sisterhood?

ANNE DURAND, *Psi*.

A dear little freshman who had just acquired a blue and blue pledge pin told us how "somehow Kappa touched her deeply," and she made a vague gesture in the general direction of her heart. And that is what Kappa means to all of us—it is something of the heart, something from within.

The Task Before Us At present there is antifraternity legislation on foot, and we as fraternity women have to prove to the world at large the value of our existence. We can only do this by overcoming opposition. The chief objections are: poor scholarship, the contentions that fraternity women are social butterflies and snobs, and finally that fraternities add nothing to the college. The first of these are personal, and every Kappa can see that she is not charged, justly or unjustly, with any of these faults. They are all due to carelessness, purely. The last, however, is a more difficult matter to remedy. At Minnesota, Panhellenic is starting a series of lectures for the entire University. As Kappas we can enter into all

campus activities, and make people realize that sorority women do as much for a college as nonsorority women. We are in the limelight now! The actions of individual members will be charged to the fraternity as a whole. Let each and every Kappa renew her vows and live up to them! This is the basis on which we can hope to exist.

MARGARET O. TODD, *Chi*.

THE KAPPA IDEAL

(An Acrostic)

Kappa is a beacon fire, blazing with a wondrous power,
Ancient in its mystery—lit anew each hour.
Pledged to Kappa is to learn
Perfect love and loyalty
As the flames of friendship burn, aureole-like around the Key.

Kappa is a mighty river whose strong tide flows endlessly;
And the mountain streams which feed it reach at last th' eternal
sea.

Pure and cold those rock-born waters—
Peradventure those who drink
Are made purer, worthier daughters, rising from the mystic brink.

Guardian of our crest, Minerva, grant that all of us may be
Ardent lovers of the iris—Kappa's true-blue Fleur de Lis.
May we stand together ever,
Mindful of the vows we swore;
And may "Kappa Kap the Klimax" in the future as of yore.

ELIZABETH DUKES, *Gamma Delta*.

Kappa's Golden Jubilee Convention has been held. Delegates and those present at its wonderfully inspiring meetings realized that they were indeed the privileged. Each and all resolved that the good will and inspiration received should be carried back to help and guide those unable to attend.

Three months have elapsed since then. All reports are in and a new year for Kappa has begun; yet—did only the reports go back

to the chapter sisters? Have we who pledged ourselves there in that candle lighted banquet hall carried out our pledge—to inspire, and instruct, if need be? If we have not, let us do so now. We owe it to our chapter and to our fraternity.

During that week of association, every Kappa caught the true spirit of sisterhood shown in good will, cheerfulness, thoughtfulness and love. Each chapter realized, more fully its part in the making of a whole. Its problems were others'; its welfare, others'. Better coöperation within each province was desired and a tighter bond, a closer union, was decided upon. With the binding together of these provinces could be made a stronger, more sympathetic whole. Kappas all, we united in our pledge to carry out these desires and, inspired, we turned to help make them realized.

We have said that Kappa starts now on another year towards her century mark. Let us make this, as before, fifty years of progress, inspiration, and expansion. Let us all give our best towards the furtherance of Kappa ideals and standards, and may we who benefited by close association with our loyal leaders, aid by converting our inspiration into a realization.

CELIA BRAINERD, *Xi*.



PHI CHAPTER, BOSTON UNIVERSITY



BETA ALPHA CHAPTER, UNIVERSITY OF PENNSYLVANIA



BETA SIGMA CHAPTER, ADELPHI COLLEGE

Top row, left to right: Alice Wilson, Louise Jachens, Evelyn De Mott.
Second row: Martha Halverson, Gladys Vorsanger, Helen Ringe, Edna McNeill.
Bottom row: Alice Bennett, Emily Mount, Mildred Wright.



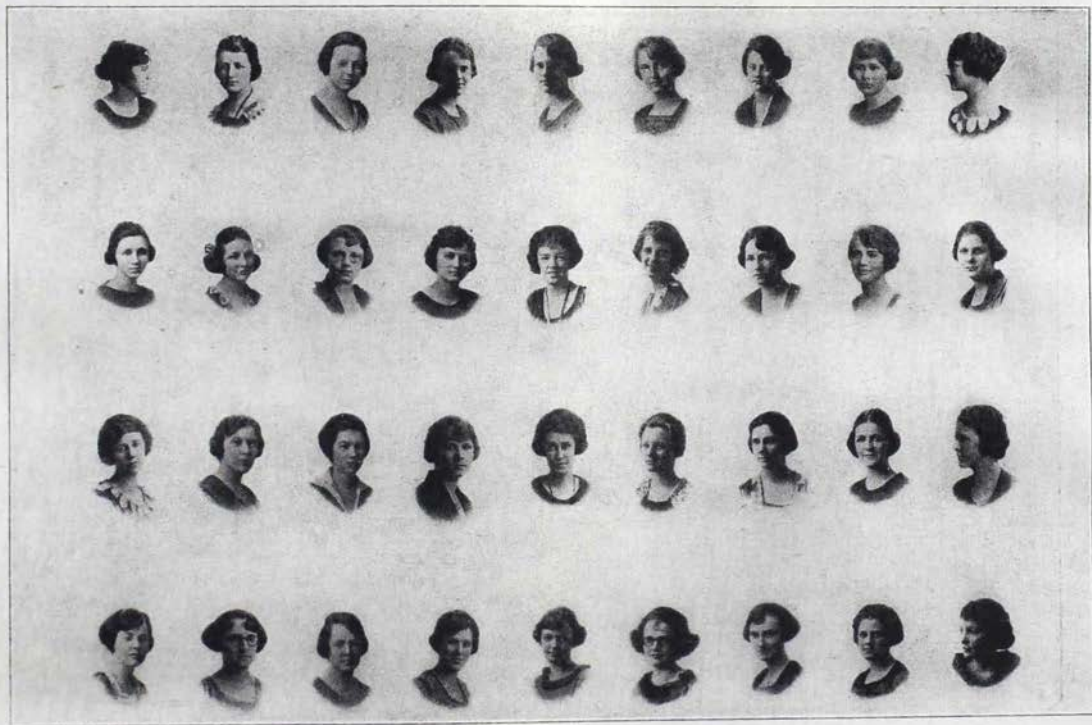
BETA IOTA CHAPTER, SWARTHMORE COLLEGE

Top row, left to right: Constance Barr, Roselynd Atherholt, Rena Sharples, Isabelle Fussell, Margaret Hayes.
 Second row: Elizabeth Griscom, Jean Knowles, Ellen Hayes, Elizabeth Miller, Dorothy Harnes, Marjorie Kistler, Helen Gawthrop, Dorothy Varian, Marion Satterthwaite, Eleanor Weber, Carolien White.
 Bottom row: Charlotte Speakman, Elizabeth Atherholt, Harriet Renshaw, Doris Hays, Hope Richardson, Ida Meigs, Lucy Penrose, Helen Griscom, Janet Young.



PSI CHAPTER, CORNELL UNIVERSITY

Top row, left to right: Helen Leary, Virginia Nudham, Mary Butler, Barbara Deuel, Irmelin Nansen, Ingrid Furseth.
 Second row: Gertrude Mathewson, Irene Hebel, Lois Elliott, Helen Root, Helen Bateman, Florence Fleet, Anne Pope, Sara Speer.
 Bottom row: Mildred Muller, Violet Brundage, Doris Martin, Emma Leary, Laura Cook, Delphine Charles, Grace Dimlow, Haidee Carll, Hazel Neal.

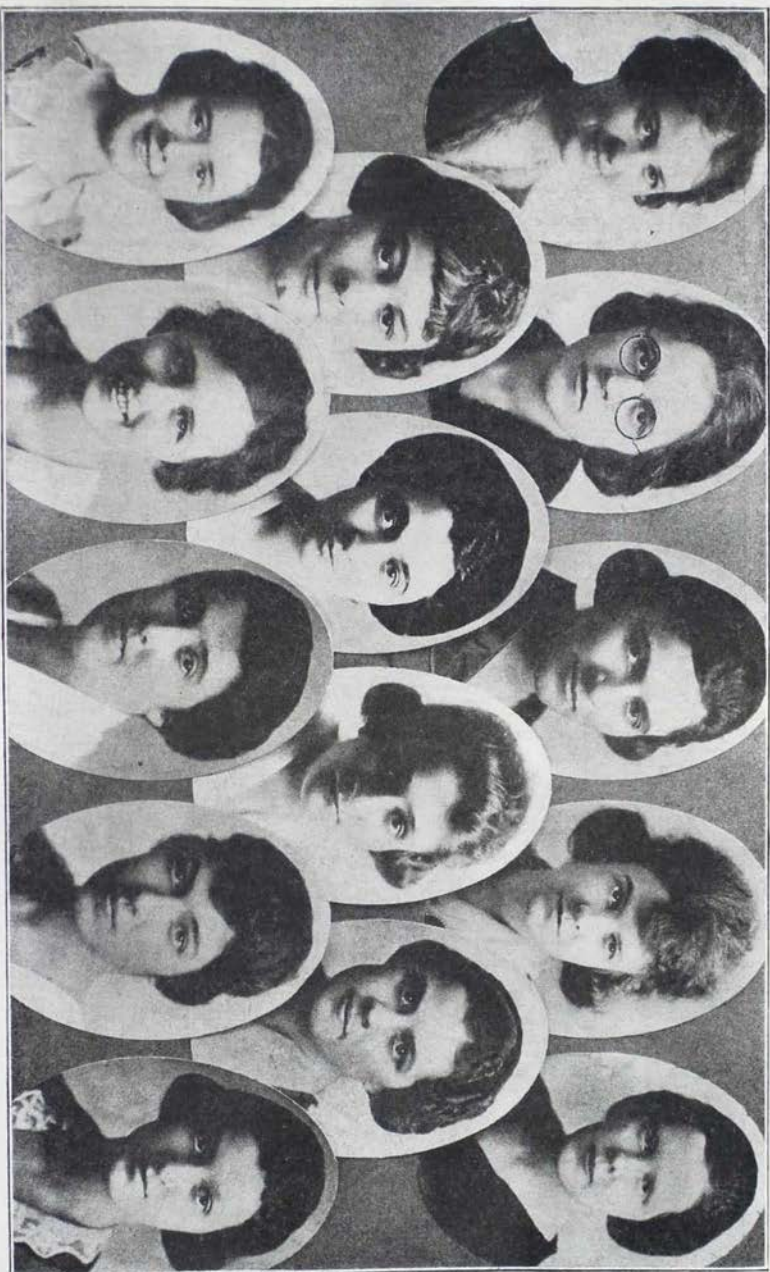


BETA TAU CHAPTER, SYRACUSE UNIVERSITY

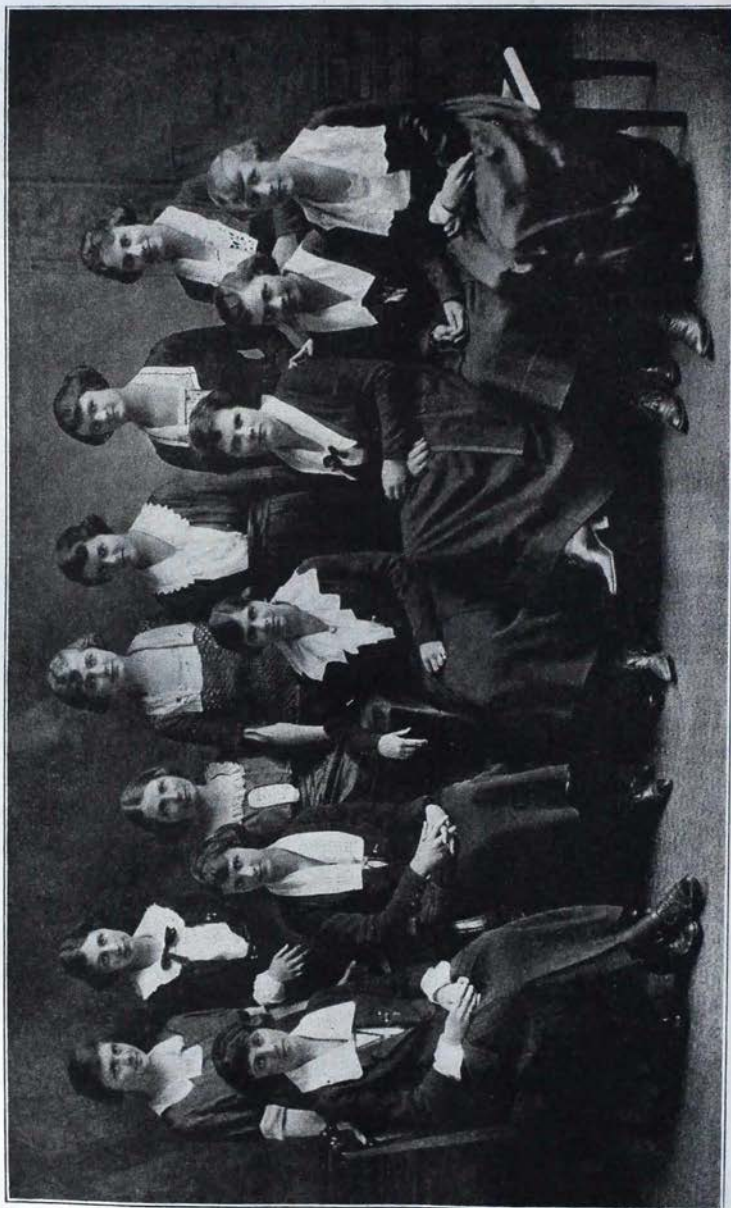


BETA UPSILON CHAPTER, UNIVERSITY OF WEST VIRGINIA

Top row, left to right: Kathryn Hutchinson, Anagrace Cochran, Georgia Wade, Lucy Shuttlesworth, Emma Brown, Clara Lyttle, Frances Stealey, Anne Sweeney, Lucille Hamilton, Margaret Moore.
 Second row, Virginia Armstrong, Theresa Dower, Eleanor Miller, Mary George, Agnes Talbott, Mahrea Goucher, Margaret Reay, Mary Stewart, Veta Williams, Ruth McCue, Elizabeth Moore.
 Bottom row: Josephine Fast, Isabel Kimmel, Louise Keener, Virginia Miller, Mary Guiker, Helen Tarr.



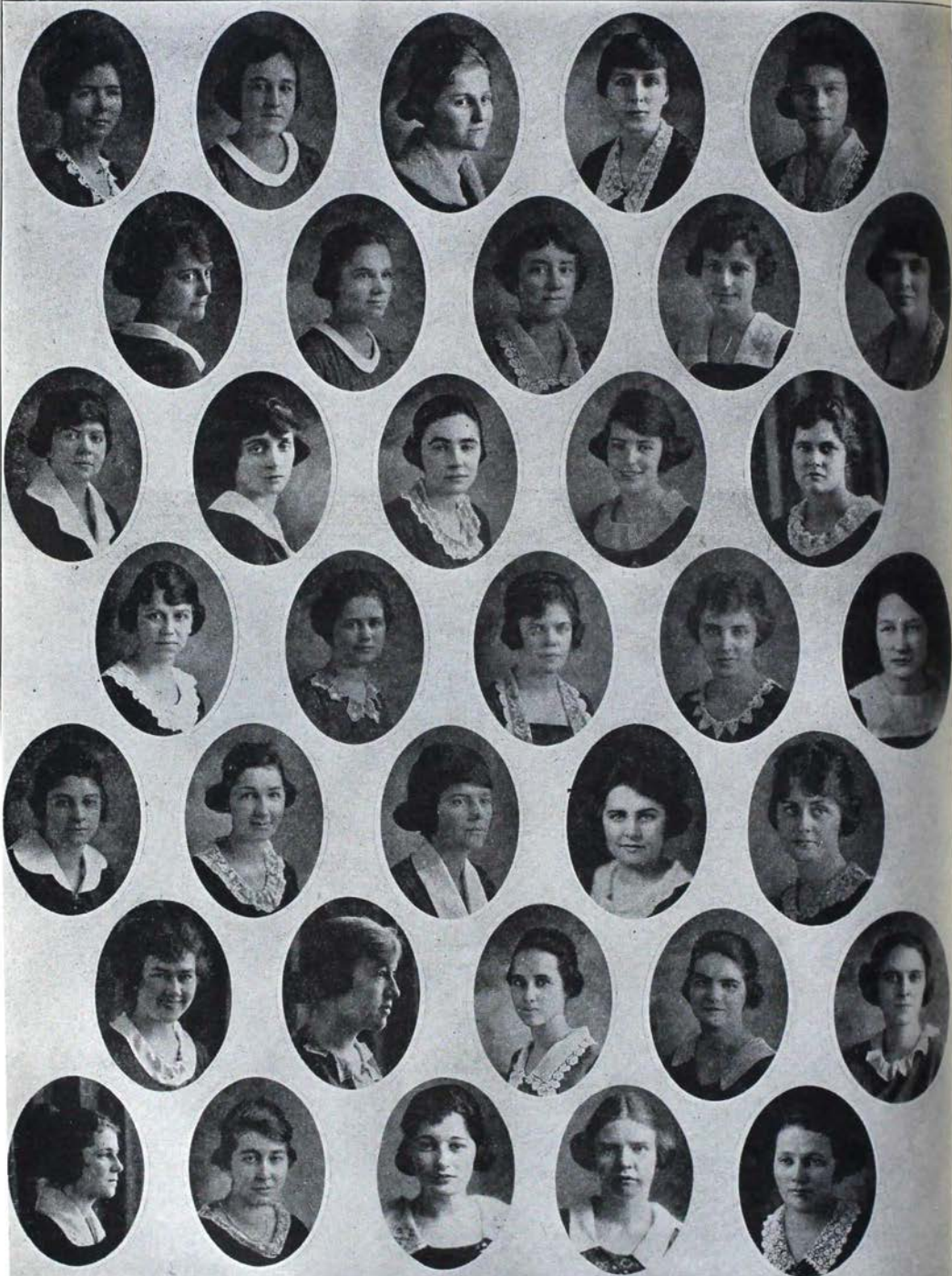
LAMBDA CHAPTER, AKRON UNIVERSITY



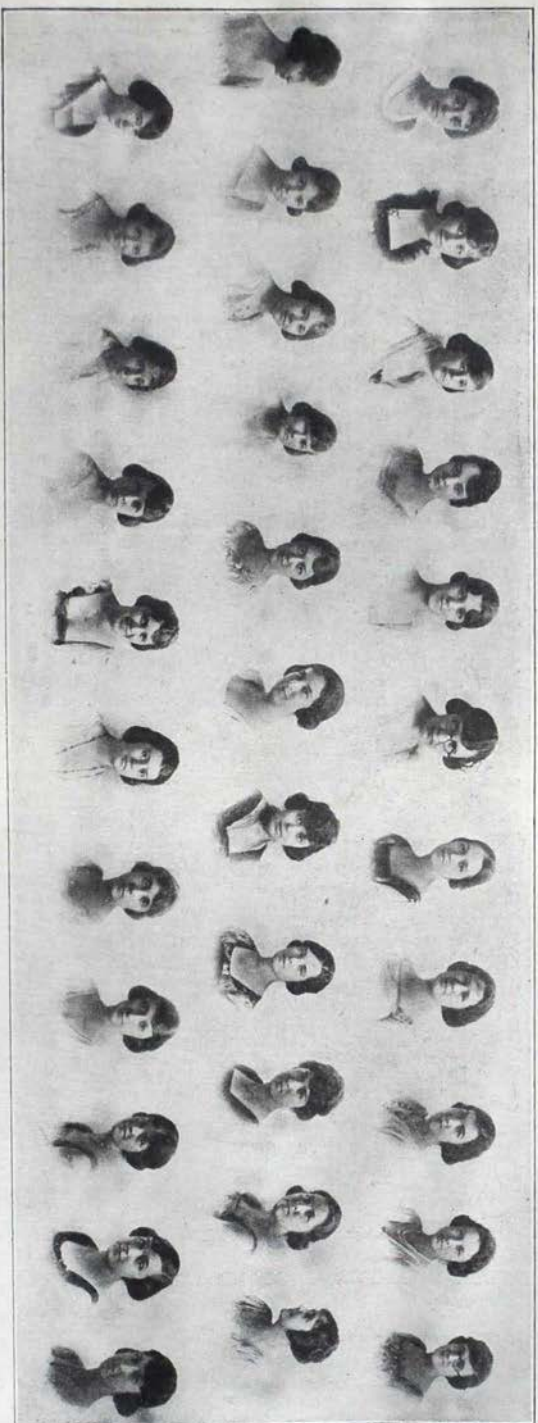
BETA RHO CHAPTER, UNIVERSITY OF CINCINNATI



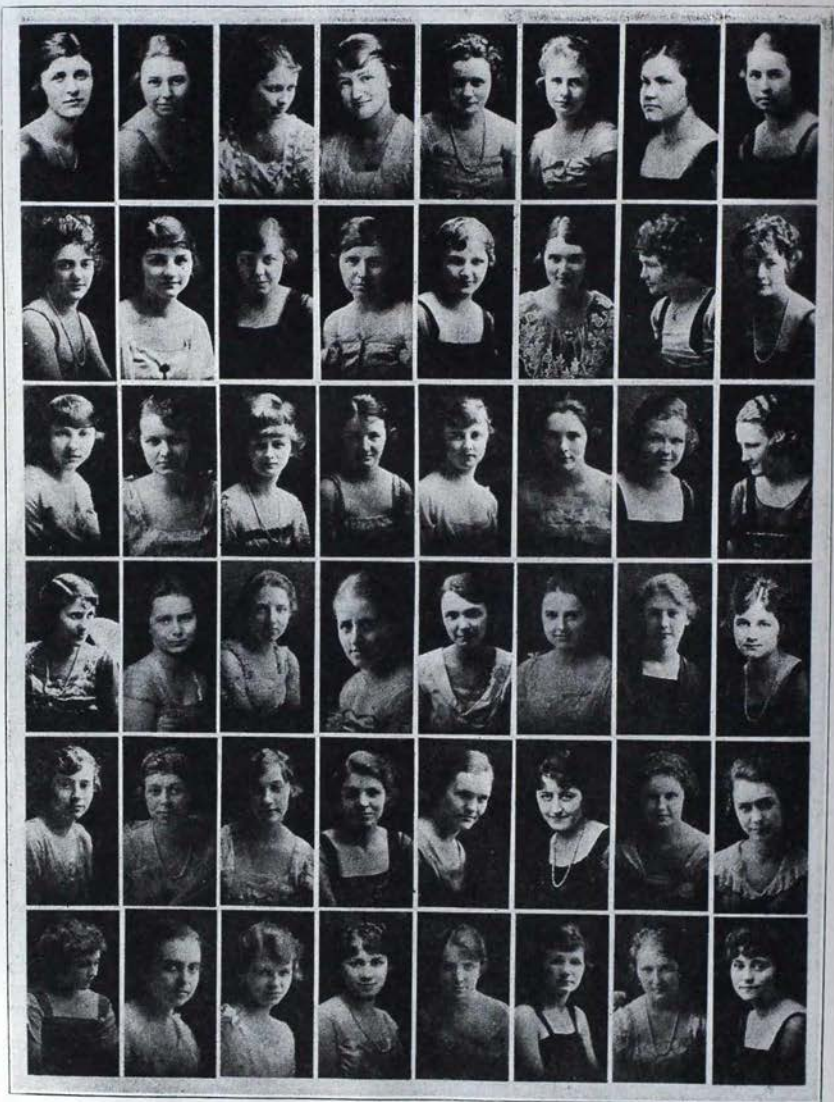
GAMMA EPSILON CHAPTER, UNIVERSITY OF PITTSBURGH



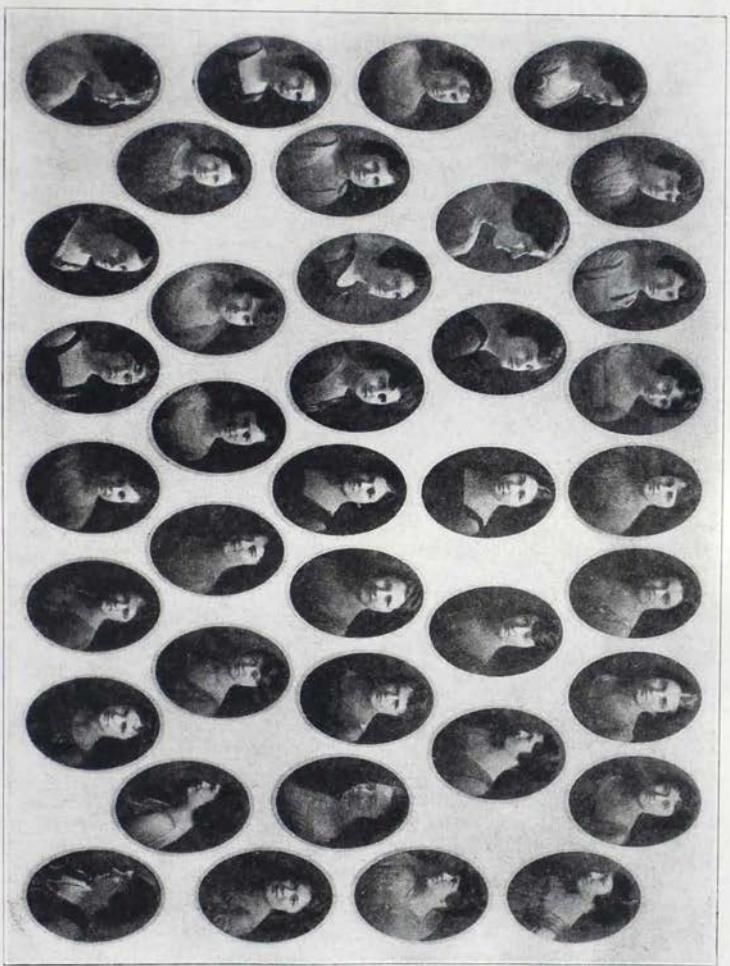
BETA CHI, UNIVERSITY OF KENTUCKY



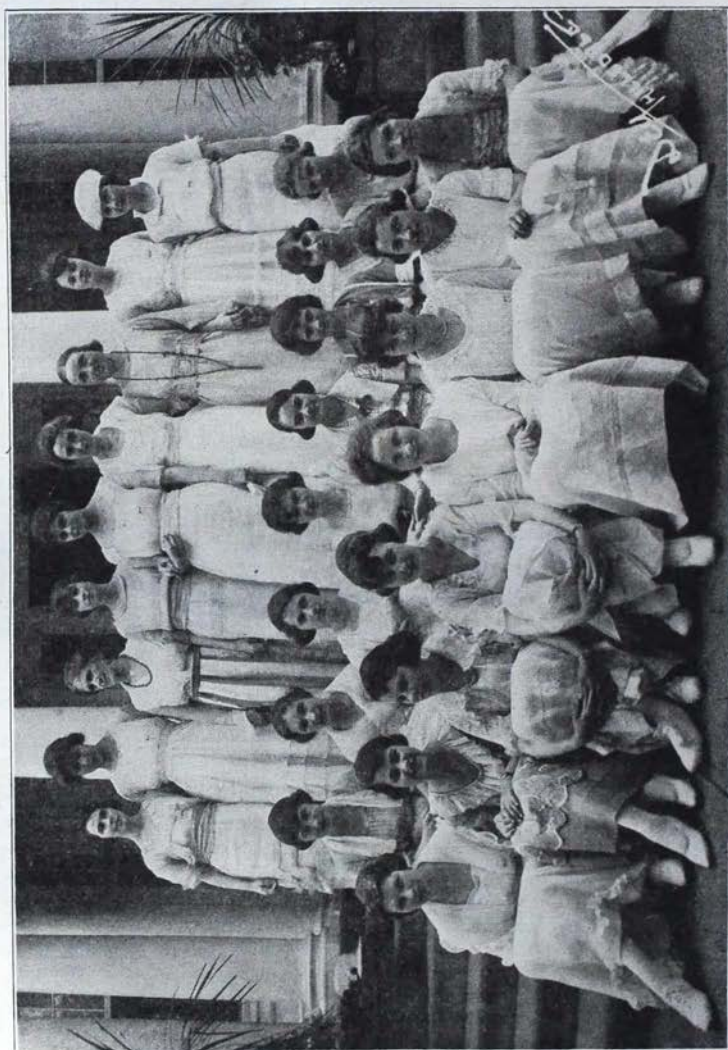
MU CHAPTER, BUTLER COLLEGE



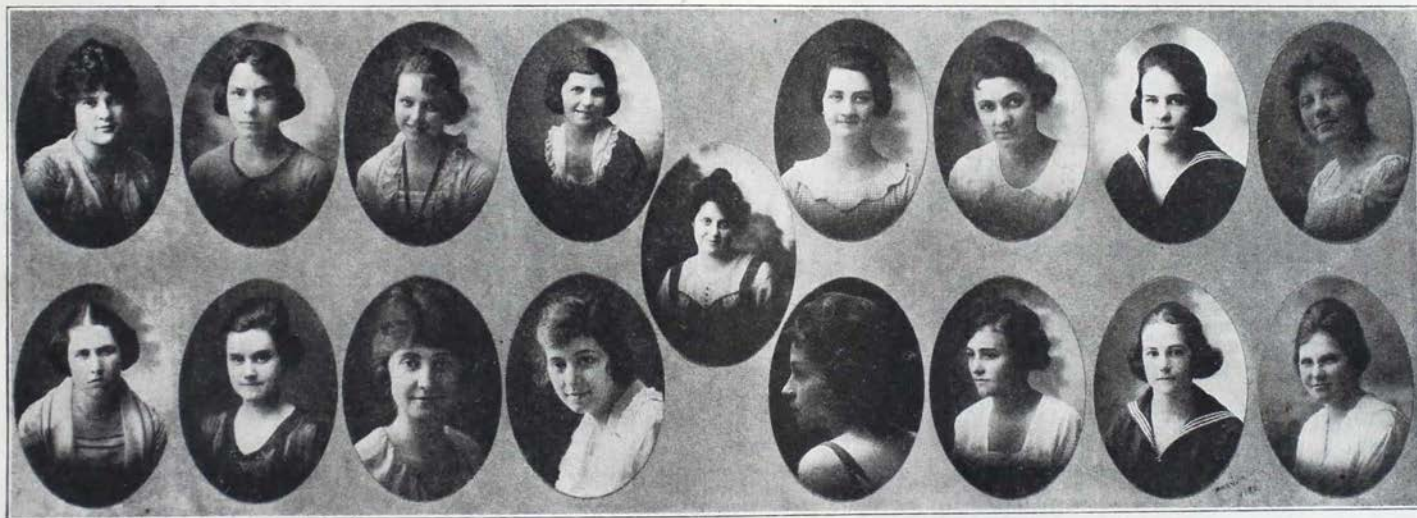
DELTA CHAPTER, INDIANA STATE UNIVERSITY



BETA DELTA CHAPTER, UNIVERSITY OF MICHIGAN



KAPPA CHAPTER, HILLSDALE COLLEGE



XI CHAPTER. ADRIAN COLLEGE

Top row, left to right: Irma Jean Croft, Doris Alverson, Marvel Garnsey, Helen Hall, Margaret Stover, Alice Baldwin, Lois Stephens, Geraldine Miller.

Second row: Helen Friend Wagner.

Bottom row: Miriam Croft, Dorcas Alverson, Celia Brainard, Mildred Hart Sletten, Francis Foote, Lela Chamberlain, Helen Rankin, Margaret Hayes.



UPSILON CHAPTER, NORTHWESTERN UNIVERSITY

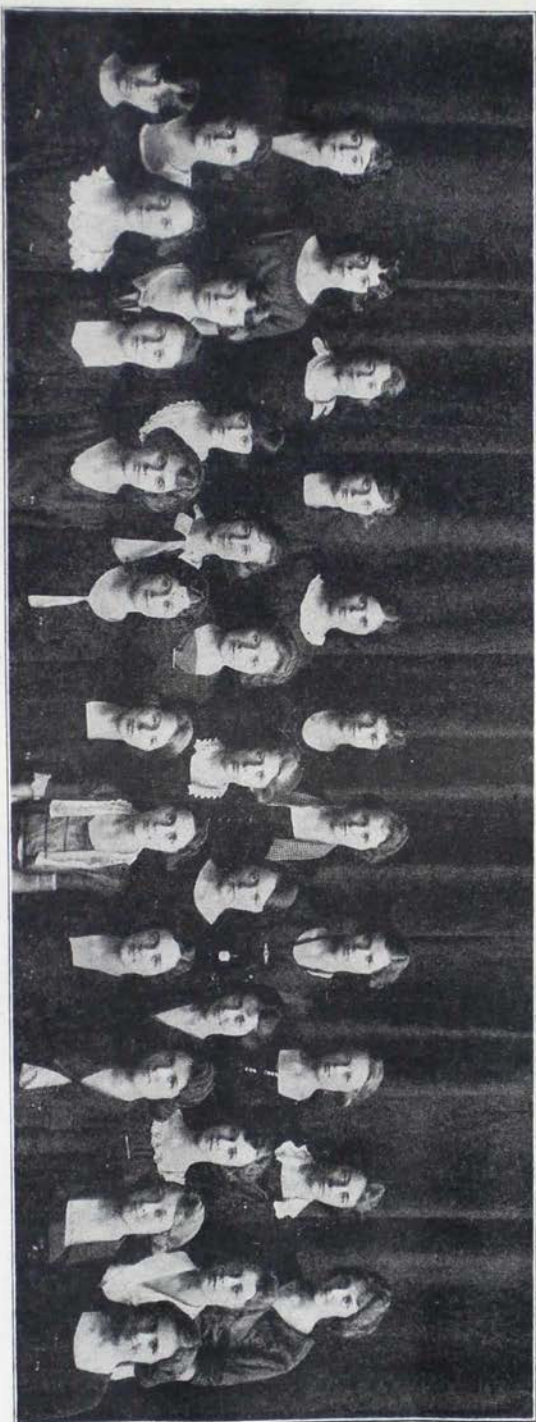
Top row, left to right: Louise Thompson, Catherine Dickson, Ruth Vandenschoten, Ethel Eycleshymer, Virginia Reid, Ethel Flenty, Ruth Fifer, Dorcas Sherwood, Marion Hallberg.

Fourth row: Miriam Hamilton, Mildred Brown, Elizabeth McMein, Frances Emerson, Margaret Duthie, Harriet Mogg, Gladys Thompson, Louise Raddin.

Third row: Virginia Howells, Jessie Wall, Margaret Greer, Margaret Dickson, Helen Fouts, Helen Walrath, Mildred Weston, Margaret George, Helen Shepherd.

Second row: Elizabeth Chapman, Winifred Wishard, Gladys Fredenhagen, Catherine Martin, Mary Grier, Dorothy Edwards, Catherine Miller, Harriet Booth.

Bottom row: Martha Zaring, Elizabeth Kroesen, Mary Bruner, Charlotte McDonald, Elizabeth Hoover, Ruth Belmont, Elizabeth Smith, Marjorie Ames, Helen Youngblood.



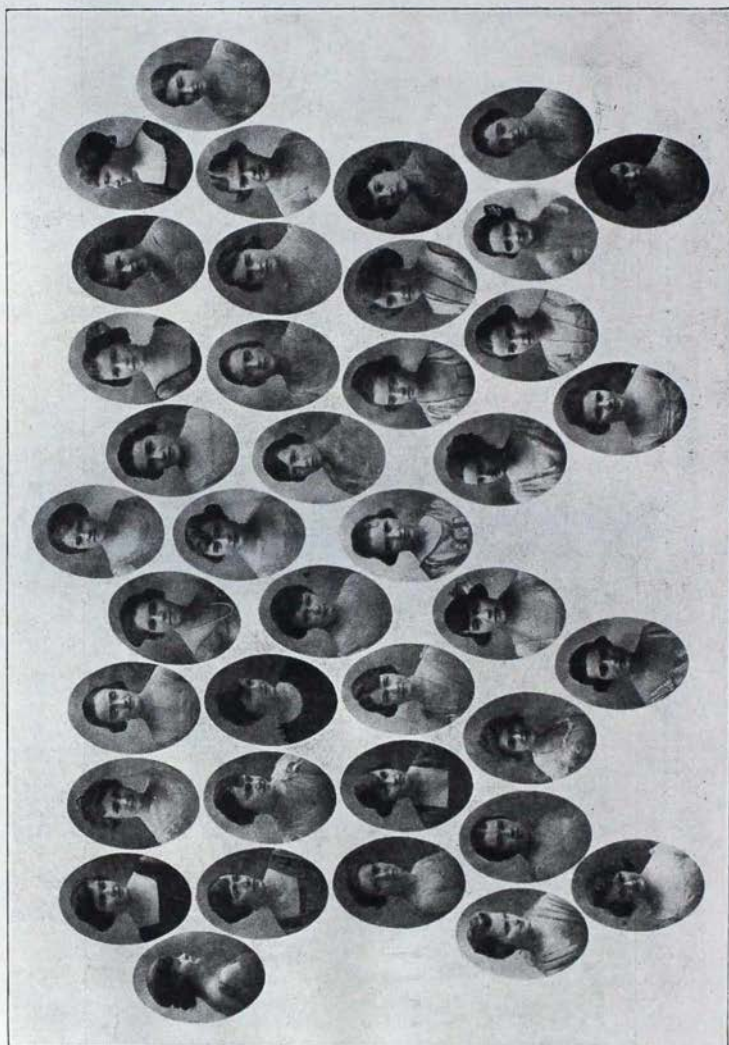
BETA LAMBDA CHAPTER, UNIVERSITY OF ILLINOIS



ETA CHAPTER, UNIVERSITY OF WISCONSIN



OMEGA CHAPTER, KANSAS STATE UNIVERSITY



SIGMA, UNIVERSITY OF NEBRASKA



THETA CHAPTER, MISSOURI STATE UNIVERSITY

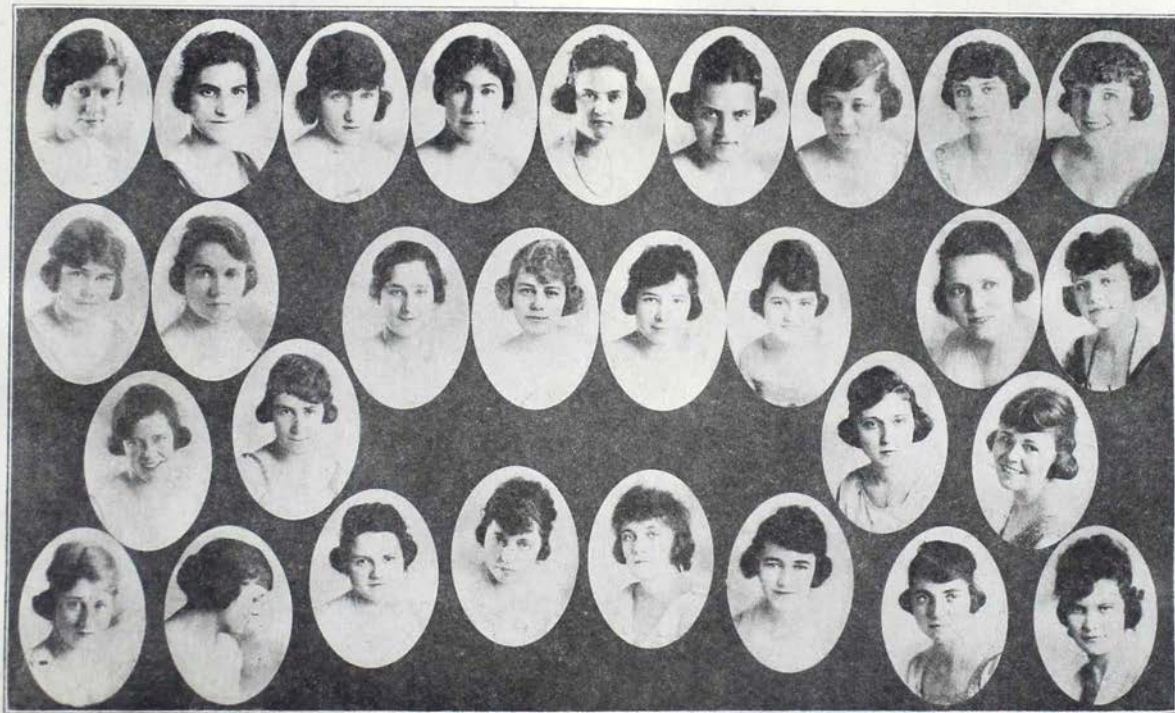
Top row, left to right: Eunice Whiteside, Helen Jordan, Elizabeth Reid, Sue A. Rosenbury, Esther Hill, Laura Frances Headen, Vitula Van Dyne, Frances Ross.

Third row: Lucie Clift, Pemala Shackelford, Gladys Houx, Kathryn Campbell, Betty Leffin, Margaret Baxter, Kathryn Davis, Helen Bingham.

Second row: Cora Miley, J. B. Ross, Harriet Blanton, Mary Bell Mundy, Nancy Moore, Margaret Miller, Helen ~~Wetmore~~ Maxine Christopher, Mary Hopkins.



GAMMA ALPHA CHAPTER, KANSAS STATE AGRICULTURAL COLLEGE



GAMMA ZETA CHAPTER, UNIVERSITY OF ARIZONA

Top row, left to right: Miriam McCaffery, Dorothy Andrews, Isabelle Irvine, Elizabeth Wilson, Irene McCauley, Lois Wendell, Mildred Andrews, Helen Willetts, Billie Williams.

Third row: Lillian Cronin, Eva Prina, Ethel Brown, Lucy Stanton, Bess Alexander, Hazel Hodges, Grace Chatham, Le Verna Stevens.

Second row: Anne Pace, Ruth White, Lillian Wood, Zella Cross.

Bottom row: Mildred Stark, Louise Curtin, Edith Harrison, Mary Cromwell, Dorothy Knox, Florence Shelby, Ruth



BETA PHI CHAPTER, UNIVERSITY OF MONTANA

Top row, left to right: Irene Begley, Marion Schlick, Virginia Morse, Dorothy Dixon, Helen Bevier, Mary Brown, Helen Newman, Beatrice Deschamps, Elaine Bates, Isobel Crangle, Sarah McNair, Helena Hutchins.
 Second row: Marie Hopkins, Anne Hall, Dorothy Powell, Olive Dobson, Constance Keith, Maribelle Spellman, Florence Dixon, Ruth Jarl, Anne Skylstead, Helen A. Little, Grace Buford.
 Bottom row: Dorothy Peterson, Kathlyn Broadevatir, Catherine Sanders, Jodie Le Wren, Beryl Berfening, Eunice Whiteside, Ann Wilson, Margaret Rutherford, Florence Sanden.



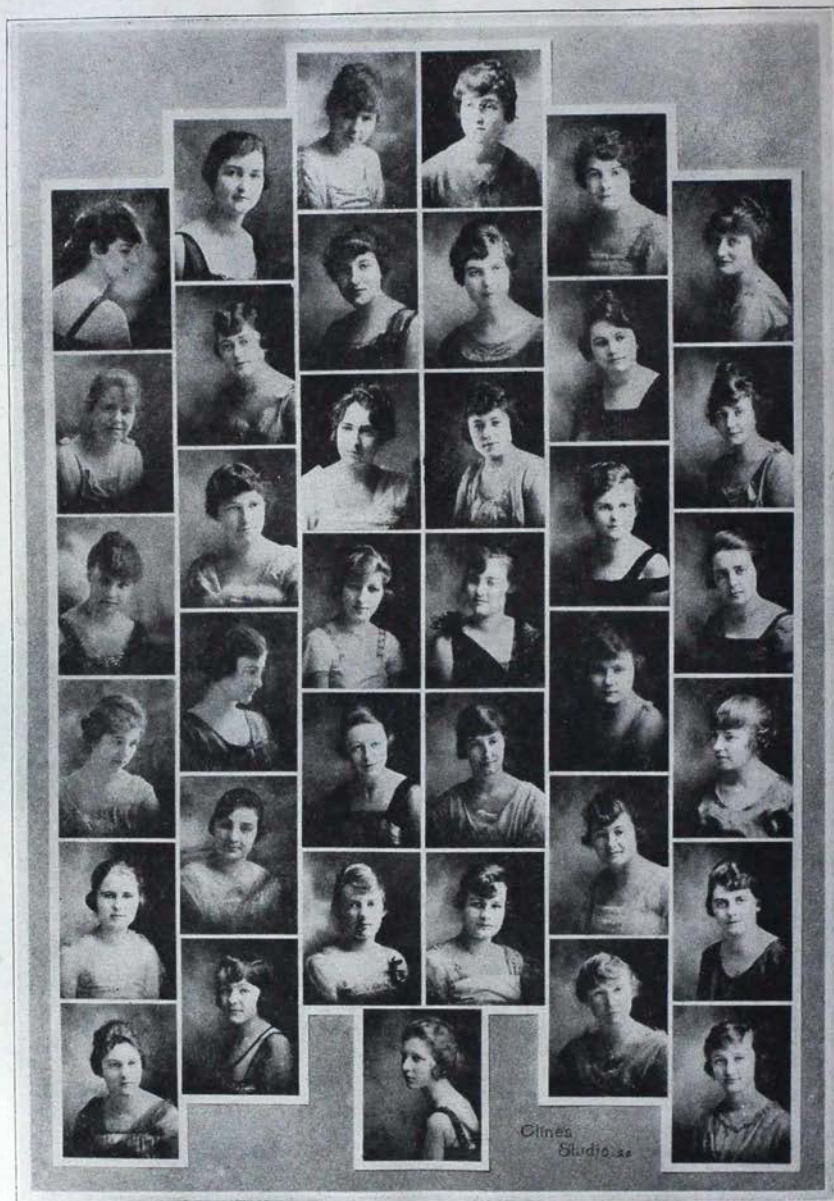
BETA OMEGA CHAPTER, UNIVERSITY OF OREGON

Top row, left to right: Vivian Studing, Florence McGillevy, Elizabeth Strowbridge, Margaret Alexander, Laura Spall, Mary Jane Albert, Margaret Griffith.

Third row: Helen Rose, Gayle Acton, Marion Weiss, Dorothy Jameson, Margaret Duniway, Louise Irving, Dorothy McKee.

Second row: Emma Jane Garbade, Mildred Apperson, Evelyn Fitzbibbon, Eleanor Spall, Alice Evans, Lois Barnett, Doris Pittenger, Arlene Hoerr.

Bottom row: Mary Evans, Helena Fox, Clara Corrigan, Mrs. Momry (Housemother), Zonweisse



GAMMA ETA CHAPTER, WASHINGTON STATE COLLEGE

First row, top to bottom: Anderson, McIlveen, Porter, Scott, Morach, Morfitt.
 Second row: Pentland, Burkett, Simmons, Fenn, Ramseur, Weeks.
 Third row: Springer, Hontchens, Wells, Beek, Wenz, Sturtevant, Sargent.
 Fourth row: Brockway, Davis, Weise, La Rue, Zaring, Young.
 Fifth row: Eiffert, Ott, Jones, Didrickson, Beinhart, Jacobs.
 Sixth row: M. Sever, Huffman, Cresswell, Carey, McAulay, D. Sever.



BETA PI CHAPTER, UNIVERSITY OF WASHINGTON



BETA ETA CHAPTER, LELAND STANFORD

Top row, left to right: Anna Judge, '22; Marie Louise Sleiling, '22; Phyllis Heath, '23; Margery O'Keefe, '23; Violet Andrew, '23; Gertrude Orcutt, '21; Donaldine Cameron, '23; Harriet Hunt, '21.
 Second row: Helen Lockwood, '22; Helen Carman, '23; Anne Hardy, '21; Marie MacDowell, '23; Eleanor Anderson, '22; Evelyn Johnston, '22; Marian Gibbs, '22; Mildred Hoover, '23.
 Bottom row: Virginia McFarland, '23; Mona Walsh, '23; Ruth Whitaker, '23; Dorothy Harlbut, '22; Kathryn Morris, '23; Helen Harris, '23; Elizabeth MacArthur, '20; Elsie Leecester, '21.

CHAPTER LETTERS

EDITED BY ROSALIE GEER

No letter received from:

University of Minnesota

University of Texas

University of Oklahoma

University of California

Next letter due January 1, 1921. Please send to Rosalie B. Geer, 241 Washington Ave., Brooklyn, N. Y.

PHI, BOSTON UNIVERSITY

House party at Marblehead, Mass., September 8-15—best ever. Settling down for high scholarship year with monthly record cards. Acquaintance party before Christmas. Conflict party after exams. Planning subscription tea and musicale to defray party expense. Served tea at alumnae meeting November 6. Freshmen seem promising, 'specially two Kappa daughters and a Kappa sister. Our best to all Kappas.

LAURA C. GOTBERG.

BETA ALPHA, UNIVERSITY OF PENNSYLVANIA

According to new Panhellenic rules, all fraternities at Penn are entertaining freshmen—on campus. Kappa expects to pledge at least thirteen new members. Competition is lively this year, and we are working hard.

MURIEL SCHOFF.

BETA SIGMA, ADELPHI COLLEGE

Successful house party for Beta Sigma at Marlboro, New York, during a week in September. Our first tea for freshmen on November 8. Chapter holding Rummage Sale for benefit of the Kappa room. Kappas initiate movement against cheek-to-cheek dancing at Adelphi. Every member of the chapter pledges active support to at least one college activity, besides taking active part in all college and class affairs.

ERVIN E. HENCE.

BETA IOTA, SWARTHMORE COLLEGE

The house party was a great success. Planning a party in honor of Kappa's fiftieth birthday. Will give pageant of Kappa's founding as it was presented at Convention. This is to be followed by a banquet.

ELIZABETH B. GRISCOM.

PSI, CORNELL UNIVERSITY

Pledged ten girls, Irene Bostrum, Dorothy Adams, Elva Becker, Katherine Schurman, Catherine Bowers, Dortha Dickenson, Barbara Treves, Ruth Bateman, Mary Colson and Elizabeth Zahniser. Chapter is giving informal dance in honor of pledges. Irene Hebel, Gertrude Mathewson, Virginia Needham, Mary Wilcox and Dortha Dickenson on honor list for scholarship.

ANNA DURAND.

BETA TAU, SYRACUSE UNIVERSITY

Greetings from Beta Tau! Initiated Elsa Berwald and Evelyn Pomeroy, Syracuse. Affiliated Pauline Knipp, '22, formerly Beta Lambda. Pledged Florence Bray, '24, Jane Griswold, '24, Augusta Mahr, '24, Mary Hutchins, '24, of Syracuse; Dorothy Maten, '22, Elizabeth Weaver, '24, of Wilkes-Barre, Pa.; Virginia Williams, '24, Jacksonville, Fla.; Ruth Reed, '24, Marcellus, N. Y. Harriet Fairbanks, '21, initiated Phi Beta Kappa. Alida Basset, '21, Helen and Harriet Fairbanks, '21, Eta Pi Epsilon, Senior Women's Honorary Society. Mary Magavern, '22, vice-president of Junior class. Engagements—Alida Basset, '21, to George Cory; Elizabeth Blanchard, '22, to Wallace Cass; Helen Wilson, '22, to Charles Ryan; Florence Nicholson, '23, to John Bruce.

RUTH MARGARET TRETT.

BETA BETA, ST. LAWRENCE UNIVERSITY

Bid and pledged Mary Whitehead, Ahvah Whitehead, Edna Jeanne, Gertrude Wood, Alice Richardson, Hazel McMillen, Esther Hannahs, Catherine Hartwell, Catherine Bernier, Louise Burke, Doris Eggleston, Adelaide Clark, and Elizabeth Arnold. On our three days of entertaining we had a progressive dinner, a picnic on the St. Lawrence River, and a Japanese Tea. October 9 we had our Zeta Phi Installation Banquet. Twenty-six Zeta Phis came from all parts of the country to be initiated.

MARY E. GUNNISON.

BETA PSI, UNIVERSITY OF TORONTO

We initiated nine freshmen in June.

Joyce Kerr married to Carlton Rankin. Eleda Horning married to Claude Williams, is living in New York.

Laura Denton, one of our Kappas, called to the bar of Ontario, October 21. She is the first woman graduate of Victoria to attain this goal.

We are anxious to meet American Kappas who come to Toronto. Any doing so call Edith Williams, North 4124.

MARION BREWSTER.

GAMMA RHO, ALLEGHENY COLLEGE

On October 23 Gamma Rho pledged Ruth Ling, Marie Baker, Martha Harper, Alice Sims, Jeanne Bowser, Florence Crandall, Jean Howe, Sara

McQuiston, Eleanor Graham, Eleanor Diffin, all of the class of '24, and Marjory Duff of '23. Town alumnae entertained the active chapter at the home of Mrs. Walton on October 16. Kappa seniors entertained Allegheny seniors in honor of Dean Spalding and her niece, Miss Johnson. Miss Winifred Terry, '03, is teaching English here this year. Marian Morrison was elected vice-president of the senior class; Nelle Wooley, vice-president of the junior class; Linnie Loudon, treasurer of the sophomore class; and Eleanor Graham, vice-president of the freshman class. Helen McClintock, Gamma Province President, is married to Frank Sprague. Engagement of Carolyn Brownell, ex-'21, to Herman Fahr, '15, is announced.

NELLE WOOLEY.

GAMMA EPSILON, UNIVERSITY OF PITTSBURGH

Gamma Epsilon announces the pledging of Mary Albert Riley, Wilhelmina Eaken, and Alice Bash.

The initiation for these three upperclassmen took place on Tuesday afternoon, November 2, at the home of Elizabeth and Fredonia Fulton.

We also want to introduce our new freshmen—Olive Wilt, Helen Covalt, Phyllis Stevenson, Leonore Cooper, Alice Hill, Alice Aston, and Julia Bradford.

KATHERINE JOHNSON.

BETA UPSILON, WEST VIRGINIA UNIVERSITY

Nine girls were pledged this fall: Theresa Dower, Elizabeth Moore, Lucille Hamilton, Anne Sweeney, Mary McNeill, Veta Williams, Georgia Wade, Mary George, and Jeanette Schultz. Among our parties were, a progressive dinner, a dance in Fairmont (a neighboring town), and a breakfast.

Kathryn Hutchinson was elected secretary of the junior class, Lucy Shuttlesworth historian of the senior class, and Jeanette Schultz treasurer of the freshman class. Virginia Armstrong has been elected the junior member of student council.

LAMBDA, MUNICIPAL UNIVERSITY OF AKRON

Three-fourths chapter attended National Convention. Isa Keck, president of Women's League. Louis Waltz, delegate to Inter-school Vocational Convention at Pittsburgh, Pa. Bid and pledged four girls: Grace Lee, Cornelia Harper, Dorothy Halinan, and Elizabeth Cole.

MARIAN BURR.

BETA RHO, UNIVERSITY OF CINCINNATI

Beta Rho party took place Saturday, October 23, 1920. It was a great success and Beta Rho takes pleasure in announcing ten new pledges. The

girls are working hard in all phases of college activities and everything indicates a successful year. Our philanthropic programme for the winter has been planned, but as yet not entered upon.

HELEN E. BEIDERWELL.

BETA NU, OHIO STATE UNIVERSITY

Initiated Margaret Carter, Margaret Lea, Anne Farber, and Helen Hoskins. Pledged Marcia Pembroke, Virginia Leonard, Isabel Locke, Eliza Washburn, Jane Chester, Elizabeth Douglas, Frances Davis, Ruth Paul, Louise Newton, Catherine Radebaugh, Caroline Kennedy, Rebecca Martin and Helen Ellis.

Founders' Day Banquet was a great party, eighty-four or five present. Freshmen put on a "jazz wedding" as a stunt.

Busiest university in country! Y. M.-Y. W. Membership Campaign, Golden Anniversary Celebration, October 13-14-15-16, Big Ox Roast and Carnival and Stadium Fund Drive.

Beta Nu won \$25 prize in Motor Pageant Parade.

Five Kappas in Girls' Glee Club this year. Margaret Wood elected Chairman of Keystone.

Have an apartment house with three girls and a chaperon. Expect more girls next semester. House proposition rather staggering one in its first attempt.

MARGARET L. WOOD.

IOTA, DE PAUW UNIVERSITY

Iota reports the winning of the scholarship cup.

Kappa seniors gave a delightful party for the other seniors, and have decided to make it an annual affair.

With twenty-four girls back in the house we feel like a large family in small quarters and look forward to the near future when Iota will have a new house. For this project the Iota Chapter-house Association was formed this summer. At the State luncheon many pledges of money were made.

FLORENCE SEIDERS.

MU, BUTLER COLLEGE

Began year well by pledging twelve splendid freshmen. On September 25, had first annual initiation banquet. Finally secured rooms in Irvington for Tuesdays. Installed point system in chapter, whereby each girl receives certain number of points for participation in various school activities. Many girls made Dramatic Club. Two freshmen, Rachel Campbell, and Elizabeth Kohmer, join Butler *Collegian* staff. Mildred Stockdale elected secretary of freshman class and Marjorie Hendren elected vice-president of sophomore class. Largest body of Kappas ever assembled, were present at Golden Jubilee luncheon, held at Claypool Hotel, October 16. Reservations for 324 Kappas were made for luncheon

and even more attended. Many of the girls in our chapter, coached by Mrs. Elizabeth Bogert Schofield, took part in pageant presenting founding of Kappa. Bess Hartley, formerly of Gamma Delta, affiliated. Best wishes to all chapters.

HELEN JULIA SMITH.

DELTA, INDIANA STATE UNIVERSITY

Pledged eighteen girls—Elizabeth Reeves, Columbus, Indiana; Elizabeth Milburn, Princeton; Prudence and Marjorie Palfrey, Saint Louis, Missouri; Thelma Morgan, Indianapolis; Frances Adams, Indianapolis; Anne Craig, Noblesville; Bernice Byrum, Anderson; Helen Sluss, Indianapolis; Thelma Duffin, Louisville, Kentucky; Wilma Duncan, Kokomo; Irene Duffey, Indianapolis; Helen Woodward, Lapelle; Ruth McKenzie, Rensselaer; and Cornelia Voss, Bloomington. Several have tried out for the Garrick Club, our Dramatic Club.

Active girls gave a tea introducing our new chaperon, Mrs. Rosebraugh. One hundred guests present, including alumnae and sorority representatives.

Alumnae Club gave us a fund. We replenished our silver, linens, and other essentials.

Twenty-five Delta Kappas attended the state luncheon held at Indianapolis, recently.

Delta often enjoys visits from Mrs. Chas. Levis, Eta, whose husband is assistant coach here.

Florence Critchlow, one of our sophomores, was married October 2, to Earl Dodd, of Kokomo. At present they are living at Detroit.

DEAN FINCH.

GAMMA DELTA, PURDUE UNIVERSITY

Twenty of our girls and several of our alumnae attended the Golden Jubilee luncheon in the Riley room of the Claypool Hotel in Indianapolis on October 16. We have pledged the following girls: Harriet Steele, Salome Pfleeger, Ruth Heinmiller, Betty Robinson, Mary Jane Shirley, Laura Darby, Margaret Scarce, Clotilde Cummings, Constance Morrison, and Bernice Lauman. Harriet Steele received the scholarship offered by the Lafayette Greek Club. Purdue is planning a home-coming celebration on November 20, and Gamma Delta is expecting many of her alumnae to attend. Our freshmen are planning a party for all the freshman girls in school. We are all working hard to help raise the million dollar fund for our Purdue Union Memorial Building.

BETA CHI, UNIVERSITY OF KENTUCKY

Beta Chi is very proud of her sixteen fine new pledges and with the twenty old girls we are still the "perfect thirty-six."

Two weeks before school we had a glorious week, camping on the Kentucky River. All but two of the old girls were there and a great many of the alumnae.

Beta Chi hopes that all her sisters have as fine a year as she is anticipating.

Best wishes and luck to you all.

JULIA ANDERSON.

BETA DELTA, UNIVERSITY OF MICHIGAN

The following girls were pledged October 10: Frances Sutton, Joyce McCurdy, Helen McBratnie, Martha Kirkpatrick, Ruth Sturmer, Ruth Robinson, Faye Wight, Harriet Ackley, Helen Keyser, Netta Mae Jeffers, Dorothy Dubuar, and Janet Smith. Aletha Yerkes was elected vice-president of the senior class, Helene Torrey vice-president of the sophomore class. Theodosia Burton, Ruth Goodhue, and Joyce McCurdy were chosen to membership in Masques, women's dramatic organization. Mary Overman, '19, announced her engagement to Dr. Theodore Wright Adams, '20, Alpha Delta Phi. Announcement was made of the marriage of Margaret Jewell, ex-'20, to John Bradfield, '20, Phi Alpha Delta, and the marriage of Glaydes Daum, '20, to Douglas Elliott, '20, Kappa Sigma.

DOROTHY WHIPPLE.

XI, ADRIAN COLLEGE

Xi entertains freshman girls at an informal party at the home of Mrs. J. N. Sletten. A formal dinner was given at the Tearoom, October 16. Tea served in Chapter Hall, Tuesday afternoon, October 19. Pledge Day, October 22. Xi announces the following pledges: Gwendolyn Morden, Elizabeth Howell, Winifred Stephen, Laura Blanche Rose, Mary Ellendon. Mr. and Mrs. J. M. Henderson announce the marriage of their daughter Catherine to Mr. Ray Wilcox. Mr. and Mrs. B. L. Hart announce the marriage of their daughter Mildred to Mr. Joseph N. Sletten. Mr. and Mrs. L. E. Friend announce the marriage of their daughter Helen to Russel H. Wagner. Mr. and Mrs. L. B. Aldrich announce the marriage of their daughter Gae to Mr. C. Hess. Born to Mr. and Mrs. L. B. Hart, Roberta Spenser, Xi chapter, 1915, a daughter (Phyllis Jane).

MILDRED SLETTEN.

KAPPA, HILLSDALE COLLEGE

The new Dean of Women for the college this year is a Kappa from our own chapter of whom we are very proud. We are living in a new chapter-house and everyone is enthusiastic over it. As usual, the Kappas are taking an active part in college organizations, both for literary and social purposes. With the inspiration received from our delegate's report of convention we are looking forward to a very successful year.

FLOSSIE BOSWORTH.

BETA LAMBDA, UNIVERSITY OF ILLINOIS

Our pledges are Mildred Rock, Dorothy Naylor, Florence May, Betty Miller, Katherine Radcliff, Ruth Glass, Doris Glidden, Martha Walling,

Jane Pritchard, Marion Barber. Home-coming brought back twenty-four alumnae to visit us. Eighty at banquet with Louise McIntyre, '07, as toastmistress.

ANNA COOLEY.

UPSILON, NORTHWESTERN UNIVERSITY

Ruth Fifer and Norma Lawler initiated October 25. Jessie Wall elected vice-president of the senior class. Dorothy Edwards appointed to junior class social committee, and Margaret George chosen for the sophomore advisory committee. Ruth Van Benschoten elected secretary of the Student Council. Helen Shepherd's committee wins Y. W. C. A. finance drive. Dorothy Edwards, Martha Zaring, and Charlotte McDonald make class-hockey squads. On *Syllabus* staff are Ruth Van Benschoten, associate editor, Dorothy Edwards, dramatic editor, and Margaret Duthie, on the "Cuts and Grinds" committee. On the *Daily Northwestern* staff are Margaret Duthie, woman's editor, and Margaret George, assignment editor. Helen Shepherd and Dorothy Edwards initiated into Shi-Ai, inter-sorority.

MARGARET DUTHIE.

EPSILON, ILLINOIS WESLEYAN UNIVERSITY

Formal pledge service was held October 9. After the service a spread was given for the pledges at the home of Margaret Marquis. Our pledges are girls of whom we are justly proud: Seven of them are town girls, Alta May Harrison, Mary Bodell, Helen Hasbrouck, Bernice Brown, Guinevere Somerville, Dorothy Parker, Madeline Ryburn, Edna Lloyd, Mason City; Elizabeth Funk, Shirley; Marjorie Fehr, Normal.

Lela Sweeting married Marvyn Adams, Sigma Chi; Helen Crum married Forrest Calder.

The active girls and pledges gave a Steak Fry at Funk's Grove on October 16.

We had our annual "Farmers' Feed" at the home of Alta May Harrison October 28, at which time our pledges gave clever stunts.

Mrs. Ziegler, one of the prominent members of Kappa Club was injured in an accident. Her condition was very serious for a while, but we are glad to be able to state that she is somewhat improved.

BEULAH HOWARD.

ETA, UNIVERSITY OF WISCONSIN

Successful year ended with Kappa first in scholarship for the first semester, average 87, and second in scholarship for the second semester, average 83. Three Phi Beta Kappas: Ethel Vinje, Clara Hoover, and Janet Butler. Alumnae Banquet, at Park Hotel, June 19, with large number of alumnae back. Marriages during the summer: Kathleen Robinson and Theodore Tobey Peck; Lucille Yeats to Milton Griswold, Psi Upsilon; Marion Fay to George Bird, Beta Theta Pi; Josephine Bliss to

Fergus Meade, Sigma Phi; Agnes Sarles to Franklin Wallin, Phi Gamma Delta; Clara Fauerbach to Charles Dunne, Delta Tau Delta; Helen McClintock to Frank Sprague. The following engagements announced this fall: Mabel Smith to Philip R. Reed, Sigma Phi; Lulu Saul to Harry Coffey; Rachel Commons to Wrenn Middlebrook.

CATHERINE HEATH.

BETA ZETA, IOWA STATE UNIVERSITY

Pledged: Pauline Breene, Fort Dodge, Iowa; Grace Dyke, Iowa City, Iowa; Claribel Dawson, Davenport, Iowa; Margaret Hostetler, Davenport, Iowa; Margery McQuilken, Fort Dodge, Iowa; Eloise Treat, Atlantic, Iowa; Corine Weber, Keokuk, Iowa; Virginia Whipple, Vinton, Iowa; Dorothea Wickham, Washington, Iowa; Margaret Wilson, Iowa City, Iowa.

Beta Zeta's president, Margaret Mulroney, was elected to Staff and Circle, an organization of representative women of Iowa, at the close of last school year.

Members holding offices are: Claribel Dawson and Margaret Wilson, Freshman Commission; Maurine Yaggy, secretary and treasurer, and Elizabeth Ensign, Hawkeye Board, of the sophomore class; Althea McGrath, vice-president of Hawkeye Board, of the junior class; and Eleanor Talley, Social Committee, of the senior class.

Beta Zeta has adopted a Point System for freshmen. Each pledge is required to make forty points in addition to the required scholarship average before initiation. These points can be acquired by membership in or attendance at the various outside activities of the University.

Beta Zeta has purchased a silver loving cup on which is to be engraved the name of the girl with highest average from both the standpoint of grades and outside activities on the campus at the close of the academic year.

Beta Zeta had the pleasure of having Mrs. Kemp at the chapter-house on October 25 and 26, when she stopped at Iowa City after visiting Drake University at Des Moines, where her purpose was to inspect the local Epsilon Tau Sigma, which is petitioning Kappa and which is highly recommended by Beta Zeta.

The active chapter gave a tea for Mrs. Kemp and the alumnae of Iowa City.

RUTH MARTIN.

GAMMA ALPHA, KANSAS STATE AGRICULTURAL COLLEGE

Pledged, Polly Hedges, of Hutchinson, Kan., Melba Stratton, Winfield, Kan., Esther Shelley, Atchison, Kan., Faye Strong, Dorothy Dugan, and Beth Hepler, all of Manhattan, Kan., Maude Irene Whitehead, Abilene, Kan., Kathryn Quirk, Newton, Kan., Jessie Lehman, Newton, Kan., Ruth Norman, Eureka, Kan., Ruth Martin, Junction City, Kan., Miriam Glass, Fayetteville, Ark., Margaret White, Parsons, Kan., and Alice Stuart, of Wisdom, Mont.

Gladys Ross, Mary Frances Davis, and Mary Dudley are back at college after a year's absence. Lorna Troup was elected secretary of the sophomore class, and Maude Irene Whitehead treasurer of the freshman class. Margaret Rochford and Faye Strong are in Glee Club. The freshmen are all taking an active part in school affairs, and every one of us is working hard to win the scholarship.

Betty Cotton and Bob Hargis were married recently. Marvel Merillat Miller and Grace Merillat Vincent have been here for short visits. On Founders' Day we had a dinner party with just ourselves for guests, at which the freshmen told why they chose Kappa. Norine Weddle gave an interesting report on her trip to convention, and told how Kappa was founded.

GRETCHEN RUGH.

SIGMA, UNIVERSITY OF NEBRASKA

Formally pledged Mary Ure, Lorna Plimpton, Marguerite Fallon, Dorothea Thomas, Daisy Davenport, Gertrude Catlin, Marjory Tappin, Nora Livingston, Mildred Marley, and Ruth Albert. Re-pledged Roberta Prince, Ann Donelon, Daisy Graf, Dorothy Murty, and Nell Hutton. Initiated Letitia Speice, Alice Huntington, Nell Hutton, and Gratia Sanborn. Dorothea Thomas is Mystic Fish, honorary freshman girls' society. Roberta Prince is X Delta, honorary sophomore girls' society. Marian Yungblut is Silver Serpent, honorary junior girls' society. Helen Burkett is in University play. Josephine Strode married Carlisle Logan Jones on October 27. Lulu Mitchell Young has a daughter, Patricia Ann. Marjorie Reese has moved to California. Marian Risser is attending Dana Hall this year. Mrs. Kemp was with us the last week in October.

HELEN BURKETT.

OMEGA, KANSAS STATE UNIVERSITY

Pledged sixteen: Dorothy McIlhenny, Fredricka Priesmeyer, Mary Tebbe, Catherine Ainsworth, Sarah Jane Hindman, Edla Root, Twila Stowers, Virginia Stowers, Elizabeth Martin, Marie Jones, Francis Eaton, Rose Soldina, Mosceline Campbell, Georgia Haynes, Margaret Brown, and Dorothy Higgins. Affiliated three: Maurine Reagan from Gamma Beta, Bonnie White and Helen Hough from Beta Theta. Leone Forney elected to First Cabinet of Y. W. C. A. and Helen Thompson to Second Cabinet. Four active girls and six alumnae attended convention. Bonnie White took lead and eight other girls had parts in *Oh, Oh Cindy*, the annual Y. W. C. A. play. Mary Samson married to Marvin Harmes, and Doris Rosser married to Frank Fable.

CONSTANCE DEGNAN.

BETA MU, COLORADO STATE UNIVERSITY

Have fifteen wonderful pledges from all parts of the country. Marion Klingler's engagement announced to Harlow Platts, Phi Gamma Delta.

Dorothea Glenn married to Dyer Thomas, Sigma Phi Epsilon. All of us are campaigning for the state educational amendment.

DOROTHEA TOERGE.

GAMMA BETA, UNIVERSITY OF NEW MEXICO

Gamma Beta last spring purchased three lots opposite the University Campus, and paid for them by candy sales, benefit dances, etc. Louise Walraven married H. A. Ackerson in June. Katherine Conway, Charter member, daughter of "Patsy" Conway of the well-known Conway Band, will become Mrs. William White in November. Both will continue to live in Albuquerque. An Alumnae Association has been organized with fourteen members. On October 10 we pledged Lorraine Cleveland, Helen Stowell, and Gail Beckman.

ALEXANDRIA VAUGHEY.

THETA, MISSOURI STATE UNIVERSITY

Pledged Ruth Cauthorn, Elizabeth Clark, Charlotte Clemens, Cornelia Compton, Claylain Costello, Juliet Daws, Dorothy Dorsey, Mary Guitar, Frances Groves, Martha Henson, Helen Jordon, Betty Leffin, Mary McAuliffe, Mildred McIntosh, Sue Rosenberry, J. B. Ross, and Margaret Wassmer. Sent delegation to St. Louis to aid petitioning chapter at Washington. Planning to entertain this group the week-end of the Missouri-Washington game. Mary Chorn elected president of our Y. W. C. A. Many alumnae present at our Golden Jubilee Banquet, October 13. Started weekly custom of Sunday afternoon "at homes." Planning mother's house party for first week in November.

HELEN BINGHAM.

GAMMA ZETA, UNIVERSITY OF ARIZONA

Our pledges are: Blanche Foster, '22, Prescott, Arizona; Angela Phillips, '23, Ardmore, Oklahoma; Anita Duff, '23, Lebanon, Indiana; Lilly Belle Tally, '23, Jerome, Arizona; Marian Williams, '23, Miami, Arizona; Elva Howell, '24, Navajo, Arizona; Harriet Tritle, '24, Phoenix, Arizona; Marian Bennett, '24, Phoenix, Arizona; Hattie Burnitt, '24, Ardmore, Oklahoma. Initiated Evaline Stark and Marguerite Ronstadt.

We are working hard for the scholarship cup offered by Dean Jameson. Kappas holding class offices are: Lucy Stanton, secretary of senior class; Bess Alexander, House of Representatives, junior class; Lillian Cronin, House of Representatives, sophomore class; Ruth Prina, secretary of Student Body Organization.

Those holding organization offices are: Ethel Brown, president Y. W. C. A.; Bess Alexander, vice-president Woman's Self-government; Dorothy Knox, vice-president of Sock and Buskin Club; Hazel Hedges, secretary of Sock and Buskin Club.

Dorothy Knox was elected to the Wranglers, a literary society.

Every Sunday night we are "at home" from seven-thirty until ten-thirty to everyone on the campus.

October 24 we held open house.

DOROTHY KNOX.

BETA OMICRON, TULANE UNIVERSITY

Agnes Marsh Guthrie was married to Clifford Favrot, Δ K E, on October 2. Ida Milling and Frederick Chapman were married October 14. Twelve new keys on the campus this year, and nine pledges.

BERTHE LATHROP.

BETA PHI, UNIVERSITY OF MONTANA

Beta Phi pledged seventeen very desirable girls from various towns in the state. Mrs. Leaphart has returned and will be with us this winter. Olive Dobson, our president, gave us an interesting report of convention. We have nominated Eva Coffee for province president. We have been working hard for the passage of two measures which affect the financial status of the University. Florence Dixon is attending Johns Hopkins this year. Anne Hall has announced her engagement to Marshall Smith. The pledges gave us a luncheon at Bonner, a small town near here, October 30.

ELAINE BATES.

BETA PI, UNIVERSITY OF WASHINGTON

Pledged Helene Cole, Emily Carlberg, Mary Louise Gamble, Marion Winter, Wynne Bragdon, Margaret Eagleson, sisters; and Ruth McKinney, Esther Workman, Gertrude Smith, Helen Carman, Florence McGovern, Margretta McFarland, Joyce Gowan, Dorothy Wells, Mary Donworth, Marion Scott, Doris Howard, Betty Chamberlain. Kappas are prominent in Woman's League and Y. W. C. A., as well as on class committees. Creigh Cunningham is Field Chm. of the Northwest Colleges in the Y. W. Aryness Joy, is vice-president of Woman's League. Elizabeth McCulloch is one of three girls to win the "W" in athletics. Chapter turned out full force to the wedding of Anne Holmes, '18, to Forrest Goodfellow. Held tea on October 27, for Kathryn Burnside, Grand Registrar.

SUSAN ERWIN.

GAMMA ETA, WASHINGTON STATE UNIVERSITY

Three new sister pledges: Gertrude Sturtevant, Gladys Sargent, and Louise Ott. Gertrude Morfitt and Beulah Burkett married Lloyd and Walter Evans, Phi Delta Thetas. Working hard for scholarship cup. Twelve Kappas on honor roll. Ruth Brockway elected to Phi Kappa Phi.

GLADYS MCILVEEN.

BETA OMEGA, UNIVERSITY OF OREGON

A house full of Kappas back for work and play—35 in all. Affiliated Margaret Swartwood from Beta Kappa. Pledged eight girls including two sisters. Everyone studying diligently for highest scholarship to get name on house scholarship cup presented by Dorothy Duniway, graduate. Gave tea for house mother, Mrs. Lettie Mowrey and pledges—Helen Rose, Laura Spall, Elizabeth Strowbridge, Mary Jane Albert, Margaret Griffith, Vivian Steuding, Florence McGillvray and Margaret Alexander. Having informal dance at chapter-house November 6. Wish you all could be with us.

DORIS PITTENGER.

GAMMA GAMMA, WHITMAN COLLEGE

Great rejoicing in Gamma Gamma. Pledged Bernice Stuht, Persus Weaver, Irma Martin, Katherine McGonigle, Fern Graham, Isabel Morrison, Miriam Lienkaemper, Irene Hawks and Juanita Huntley. First fraternity in scholarship.

Best wishes from Gamma Gamma.

MARY YENNEY.

BETA ETA, STANFORD UNIVERSITY

Beta Eta began college year October 1, with largest house has ever had. October 20 pledged three girls, Dorothy Rominger, Virginia Jurs, and Yvonne Pasquale. Fraternity situation unchanged. Many honors fall to chapter: Evelyn Johnston acting president of junior class, Anna Judge, Bess MacArthur, Wranglers; Anne Hardy, president of Wranglers, Cap and Gown, Executive Committee and Flower Committee; Violet Andrews, secretary of Service Board; Virginia McFarland, swimming team; Ruth Whitaker, sophomore hockey team, and Mona Walch, vice-president of sophomore class.

ANNE HARDY.

THE ALUMNAE

ESTELLE KYLE KEMP, *Department Editor.*

Read what our energetic and enthusiastic alumnae associations are doing and go ye and do likewise! Did you celebrate the fiftieth anniversary of the founding of the fraternity in October in some appropriate manner as did the alumnae in Indiana, Beta Iota, Pittsburgh, St. Louis, etc.? If not—remember that we have a birthday every year and plan to celebrate it hereafter. Have you made plans for raising money for the Students' Aid Fund as have Syracuse, Philadelphia, Cincinnati, Cleveland, Los Angeles, and others? Are you working for the Bellevue-Meudon children with Milwaukee, Detroit, New York, etc.? If you don't know what these French wards want from their "Kappa Aunts" look up your February KEY of last year and read Adele Lathrop's letter. Are you selling Christmas cards to raise money for these two funds with the alumnae in Cedar Rapids, Chicago, North Shore, Denver, Dallas, etc.? Have you some local philanthropic work that you are doing that we would all be interested in?

We are proud to announce that our alumnae roll has added some valuable new members this year. Two associations that have been in existence for some time locally are now affiliated with the national organization, St. Lawrence Association and the Omaha Association; a new group has been organized by the Kappas in and about Bluffton, Indiana; the alumnae in Columbia, Missouri, are completing their organization and the same is true of the Kappas in Albuquerque, New Mexico, around Noblesville, Indiana, and Madison, Wisconsin. The strength of a fraternity depends on its loyal alumnae just as much as on the active chapters so we are always delighted when new associations are organized.

The New York, Boston and Philadelphia Associations are anxious to have all new Kappas who move to those cities look up the secretaries and come to the meetings. It is hard for them to find the new residents and visitors, so please don't be bashful—take the initiative and look them up. They assure you of a loyal welcome. The same is true of all associations and clubs.

This is the first opportunity I have had of speaking to all the alumnae in public, and I want to tell you that my doubts as to whether I would like to work with the alumnae as well as the

active chapters have all been dispelled—I find that most of the associations are very “active” and I do like it—decidedly!

ESTELLE KEMP.

WAR YARNS WANTED!

This isn't a call for a strain on your imaginations or literary abilities to send us tales of his experiences and your long hours of waiting during The Great War—we've read those by the score, and perhaps we are all a little bit tired of that kind of yarn anyway—it is a call for the other yarns that you are through with and tired of too, the pieces left over from your soldier's socks and wristlets, and from your own bright colored sweaters!

Out here in Denver we have the only government Tuberculosis hospital for service and ex-service men. It is one of the five hospitals to be retained by the government, and men are being evacuated here from abandoned hospitals till every room is filled. We have found upon inquiry that one of the things these men like best is a knitted slumber robe—the kind we used to make during the war—six inch squares of vari-colored yarns put together. They like to wrap up in them when reading in bed or strolling through the wards, and so the Denver Alumnae Association is undertaking to furnish as many of these robes as possible. We have gathered together all the stray pieces of yarn we can find, and some of us are unravelling our old sweaters and our husband's army equipment! We all knit at every meeting. We shall use all the yarn we can possibly get, so we are appealing to you to look into your boxes and closets and see if you haven't some left-over pieces you can send us. If you have discarded sweaters we shall be glad to rip and dye them. Every little bit will help. Please—as soon as you put this book down, see if you haven't some scraps and send them to Elfrida Van Meter, 1326 Columbine St., Denver, Colo., for the D. A. A. We would appreciate it so much.

I must tell you too what else we are doing at the hospital. The Delta Gammas started taking birthday cakes to the men, but as the wards filled it became impossible for them to keep it up alone so the Panhellenic Association has taken it over. Each fraternity has a ward, and when any man in the Kappa ward has a birthday we take him a birthday cake with three candles, which he blows out while making three wishes. His delight is as great as that

of a small child, and it is really such a little thing to bring so much happiness. The war isn't over yet for these men and a little personal attention means more to them than a great deal of medicine.

K. M. S.

ADVERTISING

Advertising—I have just looked in Webster's dictionary for the definition and here it is, "To announce publicly."

Now, we all know and realize that the science of advertising has almost reached the highest possible notch, and experts wonder whither it will lead if pursued further. We all know equally well that the most effective advertising is the establishment of a sign which the world will immediately recognize as the true sign of some particular article.

But you must, by this time, be asking what the connection can be between the science of advertising and an article for the *KEY*. It is this—in our thoughts, in our actions, in our words, in our deeds, and by our beautiful badge—the golden key—we are "announcing publicly" that we are members of Kappa Kappa Gamma.

The first and outward sign is our key. We recognize it always in its proper place but any variance makes us skeptical. I remember the year I was a freshman one of our seniors returned from a trip down town and told us the following story of having seen a girl who was wearing a Kappa key, but wearing it in such a position and manner that she knew the girl could not possibly be a true Kappa. Replies to various questions revealed the startling information that her uncle had given it to her and that he belonged to that lodge! Our senior showed her her own key, gave the girl something for "her uncle's lodge pin," and finally returned it to its rightful owner. What would be the feeling of a true, blue Kappa if someone doubted her membership in Kappa Kappa Gamma because of the manner in which she wore her key? Every Kappa knows where that key was first pinned on her and where it therefore belongs during the remainder of her life—yes, even after life had left our body. Let us remember that that key, in its proper place, is the sign by which the world recognizes us to be members of Kappa Kappa Gamma.

In those thoughts, words, and deeds to which I referred, perhaps the best sign is to follow the story which I recall my mother

having told me at some time when she thought the thing I was asking for was not at all in keeping. She told me that the best dressed person in the world was the one who was neither conspicuous because she was overdressed nor because she was underdressed, but because she was so dressed that she fitted into the scheme of things, and one recognized her as being so well dressed that one did not give her any further thought. This same "fitting into the scheme of things" so that one recognizes the person as just what they should be, is applicable as well to thoughts, words, and deeds as to dress. It is not by a conspicuous display of our badge, it is not by boastful talking of "my fraternity," it is not by reactionary words, it is not by thoughtless deeds that we advertise Kappa best, but it is by true Kappa thoughts, true Kappa words, true Kappa deeds, and the true Kappa badge in its proper place that we announce publicly that we are Kappas, the true Kappas who represent Kappa Kappa Gamma throughout the academic world as obviously as "His Master's Voice" represents its famous article in the commercial world.

FLORENCE C. PUMYEA, *Philadelphia A. A.*

A LINE FROM A STAY-AT-HOME

Dear Parthenon:

The President of our Detroit Kappa Alumnae Association says that you want an article from us, but oh, dear Parthenon, you wouldn't want it if you knew today was our only chance to write before your time limit expires—and that today we must roast two wild ducks having never before seen one with feathers on; and must also make a very smart, new winter hat from two old ones.

But we are told that underdone fowl and a home-made effect in hats are "minor matters," so we'll risk them both and speak of two Kappa thoughts which have come to us recently.

You must know that our first Kappa meeting this fall was given up to convention reports for the benefit of those of us who didn't go, and each report was given in such a pleasant, informal way that we felt as though we, too, had seen Mackinac Island lying in its northern waters; and been present at those business meetings where Kappa plans were discussed; and tripped the light, fantastic toe at the ball where the costumes were so interesting; and par-

taken of that banquet where the menu was not the only satisfying food; we even felt that we had visited Ig-gnats and helped print the *Hoot*.

So after dinner that night as the rest of the family sat reading and we, in our easy chair, went over in mind that Kappa meeting, we thought what a splendid thing it was to hold up to the world the right sort of a mirror—one that is neither concave nor convex, and above all things not the “wiggly” kind, distorting every reflection. And we resolved to polish our own Kappa mirror as often as possible and always once a month with “Bon-Ami,” so that we may see all Kappa life not “in a glass darkly,” but “in a glass clearly.”

The second thought, dear Parthenon, you gave us, for as we re-read your words of February, 1920, we echoed your idea that the active chapter should be as a child to us: ever first in our hearts and never neglected. But being a wise mother we don't want to bring up an only child, so let us make room in our hearts for that adopted one a great many miles away—Bellevue. Her adoption has broadened us immeasurably, and in return as long as our Grand Council tells us she needs us, we will seek to find even better ways to make her feel that she “belongs.”

DETROIT ALUMNAE ASSOCIATION.

“WHATSOEVER THINGS ARE LOVELY”

Let us pause at this season to consider the precious words, “Whatsoever things are lovely, think on these things,” and to define the loveliness or beauty referred to in this familiar quotation. Surely it does not mean only the outward and ephemeral loveliness which we associate with a sunset or a rose or some sweet face. Rather does it refer to that larger sense of the beautiful which, to define it exactly, is “that quality or combination of qualities which delights the intellect or the moral sense by reason of its grace or its fitness to the end in view.” A long definition, but worthy of thought.

So may we paraphrase our quotation thus, “Whatsoever things delight the soul of man because they manifest spiritual grace and fitness, think on these things. And manifesting grace means manifesting ‘kindness, charity, good-will, humility.’” What wonder the world would hold if, in the bustle and continual activity of

our American life, and of our American college life we paused often to "think on these things," to consider the grace and fitness of thought and act, and to live such loveliness.

It has been said "The domain of beauty is more extensive than the domain of the physical world exposed to our view; it has no bounds but those of entire nature and of the soul and genius of man." As Kappas we must seek some knowledge of this wide domain. As Kappas how necessary must be the pausing for such contemplation of "whatsoever things are lovely" that we may be ready in some measure to give to the great, grey world, "beauty for ashes."

EUGENIA L. REMELIN, *Cincinnati Alumnae Association.*

BOSTON ALUMNAE ASSOCIATION

Katharine H. Dodge, '17, is in Paris for a year's study of French, and is staying at the American Women's Club. She writes that six Kappas lunched together one day during the summer.

Florence Calder, '14, is studying in Paris.

Gladys E. Stover, '17, sailed October 23 for Coblenz, Germany, where she will be associated with the Y. M. C. A. in their work there.

Gertrude S. Butterworth, '04, is teaching in Montclair, N. J.

Eleanor S. Cummings, '08, is instructor in physical training at the University of Vermont.

Dorothy Richardson, '15, has announced her engagement to Mr. James Croffman, of Needham, Mass.

Mrs. H. W. Steinkraus (Gladys Tibbetts, '15), now living in Cleveland, Ohio, has a daughter, born this summer.

Mrs. David A. Palmer (May Lowden, '14) has moved to Columbia, Georgia, her husband having been appointed to the Officers' Training Camp at Camp Benning.

Margaret Plimpton was married last June to Mr. Foster Beck who is connected with the Consulate at Seoul, Korea, and they are living in the Compound.

Phyllis Additon, '20, has announced her engagement to Mr. Paul Russell of the Cornell Medical School. Mr. Russell is studying to become a medical missionary.

Lora Blanding has announced her engagement to Mr. Ralph B. Knott, of Bangor, Maine.

Mrs. Willard J. Dondale (Pauline Dorien, '17) has a small daughter who was born this summer.

Mrs. Munroe C. Rand (Dorothy Fletcher, '15) has a baby daughter, born early in the summer.

Marion F. Dondale, '14, is private secretary to the director of the State Department of Health, Division of Laboratories and Research, at Albany, N. Y.

Born to Mr. and Mrs. Morris N. Shepard (Helen Mackintosh, '12), a daughter, Pauline Mackintosh Shepard, August 17.

PHILADELPHIA ALUMNAE ASSOCIATION

Several members of our association have been married recently: Helen Gilmer to George E. Pope and they are residing in Haddonfield, New Jersey. Mary Hill Boyd and Albert Elsasser were married in September and they also are living in New Jersey, where Albert is connected with Princeton University.

The past months have brought with them two great losses to the Philadelphia Alumnae Association. Mrs. J. Percy Moore (Katharine Carter) who was one of the charter members of Beta Alpha Chapter, died in July very suddenly. She was active in Kappa work and will be greatly missed by all who knew her. Esther Griffin Miller, also a Beta Alpha, died August 30 after an illness of almost a year. Esther had many, many friends in Kappa and was enthusiastic in her relations with both the active chapter and the Philadelphia Alumnae Association.

Rebecca Townsend, '20, is doing psychological work in Youngstown, Ohio.

Katharine Beekley is studying at Leland Stanford University during this academic year.

Katharine B. Graves is the holder of the Grace Dodge Fellowship at Columbia and expects to complete her Ph.D. this year.

Katharine M. Dougherty, '16, is working again this year with the Rockefeller Institute but is taking work at the College of Physicians and Surgeons, New York City, leading to her M.D. and also to her Ph.D.

Plans are materializing for concentrated work among the members of the Philadelphia Association to raise money for the Kappa Scholarship Fund and for the Women's Building at the University of Pennsylvania.

We are also hoping to add many new members, both associate and active, to the Philadelphia Association this year. We should be glad if other associations and active chapters would send us names and addresses of members who are moving to Philadelphia or who live there in order that we may make an effort to communicate with them and extend to them the Kappa hospitality which might lead them to join us as members of this association.

FLORENCE C. PUMYEA.

BETA IOTA ALUMNAE ASSOCIATION

Helen Spiller Adams, '16, received the degree of Master of Arts in history at the University of Pennsylvania in June.

Isabel Pugh Fussell, '15, has a daughter, Sarah Entweisle Fussell, born August 7.

Announcements of two engagements have been made: Ethel R. Young, '18, to Paul H. Taylor, Delta Upsilon, from Lafayette College, and Virginia Postlethwaite, '18, to David John Stickney, Kappa Sigma, from Swarthmore.

Beta Iota Alumnae Association is at present represented on the editorial staff of the *Pictorial Review* by Marie Sellers, '10, and Helen Walker, '00.

Eleanor L. French, '17, was married to Thomas S. Martin, 3rd, on October 12.

On Saturday, October 16, the alumnae were entertained by the active chapter at a most delightful party, at the Woman's Club, Swarthmore, celebrating our fiftieth anniversary. After a playlet showing the founding of Beta Iota, there were recitations by Janet Young and several musical numbers, followed by a banquet at which the charter members spoke. The 55 alumnae present voted the affair a huge success.

Margaret Milne, '15, was married in Paris, France, June 23, 1920, to Major M. John Gunner, of Dallas, Texas. Major Gunner was in charge of the Kars Armenia district of the near East Relief in which Margaret Milne worked last winter and spring.

On October 30, Reba M. Camp, '15, and Sewell Hodge, Kappa Sigma, from Swarthmore were married. Sarah Sheppard, '15, was her attendant.

FLORENCE KENNEDY CORSE.

SYRACUSE ALUMNAE ASSOCIATION

Jeanette Morton, '95, Dean of Women at Defiance College, Defiance, Ohio, was the only woman speaker at the Syracuse University Alumnae dinner at Pittsburgh last April.

Margaret Brown, '93, expects to spend the winter at Sea Breeze, Florida.

MARRIED

June 17, 1920. Marie Brothers, '18, and Walter Thomas, '16. Mr. and Mrs. Thomas are living at 330 Hubbell Ave., Syracuse, N. Y. Mr. Thomas is a son of Ina Wallace Thomas.

September 1, 1920. Elsie Thurber and Wilford Sanderson. During the present year Mr. and Mrs. Sanderson are living in New Haven, Conn., as Mr. Sanderson is continuing his studies at Yale.

September 18, 1920. Genevieve Cook, '20, and William M. Reck. Mr. and Mrs. Reck are living at 111 Park Street, Syracuse, N. Y.

Anne Elliot Beard, '18, to Alfred Wright, Psi U, Syracuse University, on October 20, 1920. Her address is 773 Madison Avenue, Albany, N. Y.

Miriam Beard, '19, to Henry Tennant, Phi Gamma Delta, Syracuse University, on September 15, 1920. They are living at 605 Summit Avenue, Syracuse, N. Y.

DIED

On July 28, 1920, Ruby Bryan, '11, died at her home in Greensboro, North Carolina.

On September 18, 1920, Mary Moore, '87, died at her home in Weedsport, N. Y., after a brief illness.

CINCINNATI ALUMNAE ASSOCIATION

Another busy and interesting year has begun for the Cincinnati association. The program committee has issued clever programs, containing not only the calendar of the meetings, but also a directory of the members, together with their addresses and telephone numbers.

The association has held three meetings this year. The first was in September at Viola Pfaff Smith's country home, where we indulged in a picnic luncheon. The program consisted of reports on the business and social life of Convention. The October meeting was held at the home of Flora Sabbert Randle, at which meeting we reviewed the ritual and constitution. At the November meeting, we enjoyed a luncheon with Carolyn McGowan, and forty-five members were present.

Since the last issue of *THE KEY*, there have been several brides. Lucy Tranter was married in May to Robert Hume, Phi Delta Theta from Purdue. In June Elizabeth Toms and James McGavey, Sigma Alpha Epsilon (U. of C.) were married. Hilda Baum married Horace Stueve, Delta Tau Delta (Ohio State University) in June. Minerva McGregor became Mrs. Lester Menninger in September.

There are several new Kappa babies. Mr. and Mrs. Geo. Wm. Wilson (Elsie Leining), and Mr. and Mrs. Nelson Littell (Esther Baker) have little daughters.

We have welcomed a Beta Delta into our midst, Mrs. Bertram Stevenson (Jesse E. Bane).

The Cincinnati Association sends greetings and good wishes to all her sisters.

RUTH GUHMAN.

CLEVELAND ALUMNAE ASSOCIATION

Mildred Honecker Lamb, president of the Cleveland Alumnae Association, leaves in December for California where she will spend the winter, dividing her time between San Diego and northern California. Cleveland Kappas received her resignation with deep regret, for she had begun the year's activities very enthusiastically, and had inspired the organization with the zest of accomplishing great things for the local and national interests of the fraternity.

Miss Wilha Hamilton of Upsilon chapter was married on October 12 to Mr. John Andrew Williams, at her home in Illinois. Mrs. Williams was a member of the Cleveland Association last year, and will continue her membership as she expects to make her home in Cleveland.

There were two other marriages in the Cleveland Association. Miss Marion E. Wright became Mrs. Monroe Warner in August. She hails from Beta Tau and has been associated with Cleveland Kappas for several years. Miss Edith McGrew, from Beta Zeta, was married in September to Mr. Kurt Louis Seelbach, of Cleveland. But neither she nor Mrs. Warner will be leaving the Cleveland Association, for they will reside in Cleveland and continue their support of and interest in the Cleveland organization.

There are two new Cleveland Kappa babies since last year. Mrs. Gladys Tibbit Steinkraus is the mother of Rose Constance, born June 14. Mrs. Steinkraus is a Phi Kappa and came to Cleveland a year ago.

Mrs. Frances Bowdle Douglas, of Upsilon, has a new little boy, Frederick Orrin, whose birthday was September 21. Although he will never be a Kappa, his mother feels sure that he will some day marry a Kappa girl! Mrs. Beulah Baker Locher, of Epsilon, attended the wedding of her cousin, Miss Wilha Hamilton, in Illinois and has been augmenting her trip by a visit in Chicago and vicinity.

Mrs. Mabel Felger McNiece of Beta Gamma has suffered a complete nervous breakdown. She has been ill for several months but is convalescing now.

Cleveland Kappas have been active in politics this fall. Mrs. Erma Rogers Waid from Gamma Rho has devoted the past weeks to lecturing and instructing in the Non Partisan League School for Voters. She has devoted practically all of her time to giving talks before clubs and groups of "new voters" and has made the ballot comprehensible to scores of women in Cleveland.

Mabel Rice Minshall, a Beta Nu Kappa, was a member of the Republican County Executive Committee. There were nine members of this committee and they spent a day with the Hardings in their home during the campaign. Mrs. Minshall has been active, too, in educating the women of Cleveland to be intelligent voters.

In Lakewood, Ohio, our neighboring city, Mrs. Edith St. John Smith, from Beta Nu and Miss Harriet Gates, Beta Lambda, are working strenuously in the Congregational Church, installing playground features, gymnasium and other attractions for the younger members of the church. These two Kappas are largely responsible for the lively interest shown by the parents of Lakewood children in their children's recreation, their school and church associations.

PITTSBURGH ALUMNAE ASSOCIATION

The last meeting of the year was held in the home of Mrs. Sherman Conrad when the following officers were elected for the years 1920-1921: Mrs. John Emery (Jane Glenn, Beta Gamma), president; Miss Clara E. Howard, Beta Lambda, treasurer; Mrs. Earl R. Loomis (Margaret Davis, Gamma Epsilon), secretary; and two additional executive committee members, Mrs. Bertram Stevenson (Jesse Bane, Beta Delta) and Mrs. Sherman Conrad (Irene Farnham, Upsilon).

The first meeting this year was in the form of a luncheon to celebrate Founders' Day with the active chapter. Twenty-two enthusiastic Kappas made the affair a success together with Mrs. Sherman Conrad's splendid impromptu speech on Convention. She made us feel that it was more of a criminal offense to stay at home than to beg, borrow, or steal the money to go. However, we were all there in spirit, and take this opportunity to extend every good wish to our new officers.

Our membership list includes twenty-eight Kappas, an increase of ten over last year.

Miss Mary Merker, Mu, is located in Pittsburgh, teaching at the Pittsburgh Musical Institute, and singing in the Sixth United Presbyterian Church.

Miss Lois Peebles, Beta Zeta, is taking a secretarial course at the Carnegie Institute of Technology.

Mrs. Sherman Conrad has been elected president of the Pittsburgh Panhellenic Association.

Miss Elsie Young, Gamma Epsilon, is teaching Latin and English in the Hopkinsville High School, Kentucky.

We are sorry to lose three of our active members, who have moved out of the city. Mrs. Bertram Stevenson (Jesse Bane, Beta Delta) has gone to Cincinnati, Ohio, Mrs. C. E. McAfee (Caroline Ageter, Beta Gamma) to Florida, and Mrs. Chas. W. Garrett (Edna Purkey, Delta) to Philadelphia.

During the last six months, three Gamma Epsilon girls have been married. Miss Frances Merritt was married to Mr. Gilbert E. Seil, Miss Janet MacDonald is now Mrs. S. D. Flinn, and Miss Helen Hardman is a very recent bride of Dr. Alonzo Tripp Briney. Fortunately we have not lost these girls, for they are all residing in Pittsburgh.

MARGARET D. LOOMIS.

MORGANTOWN ALUMNAE ASSOCIATION

The Morgantown Association entertained the active chapter and its friends on the evening of September 30, with a progressive dinner. The hostesses were Mrs. Robert Hennen, Mrs. Roy A. Lough, Mrs. Lena Brown, Mrs. O. Barnard and Miss Ada Reiner. About sixty guests were present, including the alumnae.

Mrs. J. B. Stratton, formerly May Sullivan, has been visiting friends in Morgantown. Several delightful social affairs were given in her honor.

Mrs. Genevieve Staley Roach of Waco, Texas, has been the guest of friends in the city.

Miss Jessie Byers, former chaperon at the Kappa house, is spending some time in the city, the guest of relatives and friends.

Margaret Buchanan is spending the year in France taking post-graduate work at the Sorbonne.

Hazel Ross was married on July 28, to Carl P. Leatherwood, a former West Virginia football star. They are at home in Clarksburg.

Frankie Marie Smart was married to Joseph Edward Wilkinson late in the summer. They are at home in Cincinnati.

Mary Williams is the bride of Sterling Bottome. They are living in Pittsburgh.

Merle Carter Mayfield is married to William McCune Bloyd.

LUCILE GONEHEE McFALL.

INDIANAPOLIS ALUMNAE ASSOCIATION

The Indianapolis Alumnae Association has been celebrating the golden anniversary of Kappa with gay festivities. Our association, with all the active chapters and alumnae clubs in Delta Province met together at the Claypool Hotel, October 16, and when we counted noses after being seated at small beautifully decorated, individual tables, we found there were three hundred and twenty-four true-blue girls together.

Our alumnae association president presided just long enough to tell one of her clever stories, for our president is Mrs. Jo Rand Beckett of Iota. (Oh, yes, I almost forgot to say that we had the best food at this luncheon of any we've ever had.) Mrs. Beckett at once turned the meeting over to the toastmistress who was Sidelia Starr Donner, the Delta Province President. We had a solo by Mrs. Delos Alig of Delta chapter, and she surely surpassed all her previous records in making a hit and was encored three times.

Then came the toasts by charter members of the three old chapters in Indiana—Delta, Iota, and Mu. Mu was represented by Mrs. Orren Pruitt, Delta by Anna Reinhard Loudon, and Iota by Ida M. Andrus. Lila Burnett Loudon, as Province Vice-president, also brought greetings to all the girls there.

Cleon Colvin played several beautiful violin selections, after which came the surprise of the day. Two Kappa children, Johnnie Harris and Betty Jane Woolling, pulled in a tea-cart, covered with blue and blue crêpe paper, and bearing a huge birthday cake with fifty blue and blue candles on it. Everyone was thrilled to death over it, and the little tots were too dear when they came in one pushing and one pulling it. Then while the candles burned down, sheets of convention songs were passed out, and we all sang those songs and all the old familiar ones, until the girls dressed up to give the historical pageant, depicting the origin of the fraternity. This was the same sketch that was given at Convention, and it was written by an Indianapolis girl, Mabel Warner Milliken. This sketch just ended the whole affair with the right touch, and everyone lingered even then to be sure she hadn't missed any news of old sisters. The luncheon began at one o'clock and it was almost five-thirty when we all pulled ourselves away.

The most important feature of the whole affair was the donation given to the Student Aid Fund and the French Relief work. You see it was this way—We had charged two-fifty per plate for the luncheon, and that was to include a souvenir for each person. Those souvenirs just didn't arrive, and so we asked all those there if they wanted us to forward the souvenir when they did come, or if they would like that money to go to the two philanthropic organizations. Immediately everyone was for giving the money to help Kappa's good work. So we have about one hundred and twenty-five or thirty dollars to send in. Of course that is not to be from the Indianapolis club alone, but from all the guests from all towns in Indiana.

I would like to have you know all the names of all those here for the luncheon, for it was surely a fine, big affair that none can ever forget.

The Alumnae Association has one more meeting before Christmas. We are now advertising the auction sale which we will have at the Christmas meeting of hand-made articles, donated by club members. That is our own personal club donation to the Student Aid Fund and the French Relief work.

We wish you could all have been here at our Jubilee Luncheon and send greetings to you all.

MRS. CHARLES R. JONES.

BLOOMINGTON, INDIANA, ALUMNAE ASSOCIATION

The Alumnae Association of Bloomington joined with Delta chapter in entertaining the Kappa Alumnae and former members who returned last June to celebrate Indiana University's Centennial. At the home of Mrs. Lila Burnett Loudon, the Kappa seniors were initiated by Mrs. Teter, the president, into the local association. The following evening, more than one hundred and twenty-five Kappas enjoyed dinner together, over which Mrs. Anna Loudon presided.

The Alumnae Association desired last year to do something for the University. A student loan fund was being raised as a gift of the women of the University. To this, we contributed one hundred dollars. We had the desire to do even more than this. A scholarship cup was decided upon. This is to be awarded each year to the girl who makes the highest average in the University, regardless of her class standing. This year it was awarded to Estella B. Owens of Fort Wayne, Indiana, a member of the sophomore class. She had thirty-two hours of "A" work.

We are glad to welcome the new babies—sons and daughters—of these former members of our association: Faye Harris Leckner, Chicago; Shirley McNutt Landers, Indianapolis; Edith Fitzpatrick Barbour, Davenport, Iowa; Willa Robbins Mendenhall, Greenfield, Indiana.

Since our last letter to *THE KEY* we have received announcements of these marriages: Ethel Smith Hobbs of Bloomington, to Chester F. Tournier of Bloomington; Louise Neal of Noblesville to Fred Conkle of Indianapolis; Nell Johnson of Eaton, Ohio, to Philip Bash of Huntington, Indiana.

Anna Koch of Chicago is teaching French in the Huntington, Indiana, High School, while Nellie Van Antwerp is teaching in the Latin Department.

Merah Shrum of Lynn, Massachusetts, has charge of the educational work among the junior employees of the L. S. Ayers department store in Indianapolis.

Carrie Breeden of Bloomington will finish at Christmas time a course in Kindergarten and Primary Training in Mrs. Blaker's school in Indianapolis.

Alice Adams Cosler.

SOUTH BEND ALUMNAE ASSOCIATION

The South Bend Kappa Kappa Gamma Alumnae Association entertained with a luncheon on September 9. Out-of-town members of the fraternity were invited to be present. Mrs. Homer J. Miller acted as chairman of the program arrangements, and toasts were responded to by Mrs. William Happ and Mrs. F. R. Miller. Besides these toasts several informal talks were given by other members and guests.

On September 15, Mrs. F. R. Miller received the Kappas in honor of Miss Margaret Brown of St. Joseph, Michigan, who gave a delightful talk on the convention.

The regular December meeting of the association will be held at the home of Mrs. W. G. McGlothlin, 425 West Navarr St.

The South Bend Alumnae Association wishes to extend to all Kappa sisters most hearty good wishes for the coming New Year.

EDITH E. GUNN SEEBIRT.

LA FAYETTE ALUMNAE ASSOCIATION

During the summer our La Fayette Alumnae Association gave up our regular meetings and formed a Kappa Club with the active girls. We enjoyed several meetings with them, one being a picnic given at Margaret Murphy's cottage on the Wabash River at which we entertained several guests.

Dr. and Mrs. F. P. Hunter (Fern Nordstrum, Gamma Delta) are the parents of a daughter, Mary Frances, born July 8, 1920.

Miss Gladys Sproat, Gamma Delta, was married October 7, to Gilbert Walker. Mr. Walker is connected with the Extension Department at Purdue University. They are living in West La Fayette.

We lost one of our best workers in Alice Egbert Thurber, Beta Tau. She left last June for New York City.

During the past summer we have had several Gamma Delta Alumnae visiting us among whom were, Lucile Wilkinson McCampbell, Hazel Plummer Ball, Maude Loveless Collings, Ethel Snodgrass and Eva Wright Maudlin.

Mabel Leaming, Gamma Delta, is teaching in Sidney, Ohio.

Edith Deen, Beta Chi, is a recent addition to our association. She is teaching in the La Fayette High School.

Bernice Havens, Gamma Delta, who graduated from Purdue University last spring is now a member of our association. She is teaching in the La Fayette High School.

Five of our members attended the Golden Jubilee luncheon held at Indianapolis. They reported a most enjoyable time.

GRACIA BUSKIRK.

MUNCIE ALUMNAE ASSOCIATION

The Muncie Alumnae Association is grieved to report the death of Mr. Harmon Bradshaw on September 13. He is survived by the widow Elizabeth Mahan (Iota), one daughter, Mary Frances, and one son, John.

Four of our eleven members—Mrs. Everett Warner, Miss Etta Warner, Mrs. Harry Orr and Mrs. Harry Long attended the Jubilee luncheon at Indianapolis, October 16. They reported a wonderful time.

Martha Walling, one of our popular Muncie girls is a Kappa pledge at Illinois University.

Mildred Kitzelman (Eta) is studying in New York City this winter.

Agnes Smith and Elinor Spencer have returned to Ann Arbor.

Mary Belle King and Mildred Sheets are at Indiana University.

RUTH CHENEY.

FALLS CITY CLUB

We are glad to claim as one of our new members, Mrs. Zenos Scott, formerly Anne Heaton of Jeffersonville, Indiana. Mr. Scott is the new superintendent of schools in Louisville.

Mrs. Horace Meldahl formerly Bess Ruthenburg of Louisville now of Charleston, W. Va., has a second son, Robert Douglas.

Mrs. Fessler, Rowena Cosner (Iota) of Indianapolis, Indiana, is now living in Louisville.

Sally Barclay Mitchell of Atlanta, Ga., and little daughter, Anne, have been visiting relatives in Louisville.

NORTH SHORE ASSOCIATION

June brought many weddings—among which were those of Hester Walrath ('15) to Harry Hunter, now living in Billings, Montana; Miriam Wagner ('15) to Merritt Bragdon (Beta Theta Pi), living in Evanston; Ruth Herrick ('16) to Harold Lotspeich, living in Chicago and Marion Beech ('17) to Phillip Pack (Phi Kappa Sigma) also living in Chicago.

The following engagements have been announced: Helen Gale ('15) to Edward George (Sigma Chi); Margaret Dickson ('17) to Frederick Falley; Mary Bruner ('17) to Lawrence Pennaman (Phi Kappa Psi); Margaret Sample ('15) to Shaddeus B. Basset (Phi Kappa Psi); Dorcas Sherwood ('15) to Paul Fifer (Beta Theta Pi).

Twin boys were born to Mr. and Mrs. E. C. Rawlins (Frances Northrop) in August, and a son, Thomas Martin, was born to Mr. and Mrs. Maurice James (Hazel Robbins) in June.

Margaret Greer is teaching in Honolulu this year, Nancy Knight in Colorado and Minerva Fouts at Michigan Agricultural College in the Home Economics department.

FLORENCE CLANEY.

CHAMPAIGN-URBANA ALUMNAE ASSOCIATION

The annual election of officers of the association was held at a meeting at the home Mrs. James S. Mason, the officers for the ensuing year being: Frances Simpson, president; Jane A. Craig, secretary-treasurer.

Many of our alumnae members enjoyed the hospitality of the active chapter at the annual banquet held on October 30, during university Homecoming week.

Nina Crigler, Beta Lambda, is studying at Columbia this year.

Cards have been received recently from Emma Rhoads Nickoley, Beta Lambda, mailed from Cairo, Egypt, last September. She and her family were there combining pleasure and business for the Protestant college at Beirut, Syria.

Mr. and Mrs. Frank Leidendecker (Annabel Fraser, Beta Lambda) announce the birth of a daughter on October 25, 1920.

Sarah Woods, Delta, is attending the Library school at the University of Illinois.

Kathryn Van Aken, Kappa, is an instructor here in the department of Household Science.

Dr. and Mrs. Lewis T. Gregory (Isabel Culver, Pi) now reside at 712 Washington Blvd., Urbana.

Elizabeth Rutherford, Beta Lambda, is studying for her Master's degree in psychology and instructing at the University of Illinois.

Daisy Martin and Marian Smith, Beta Lambda, are in the Registrar's office at the university.

Bird Turner, Beta Upsilon, is instructing in the Mathematics department, University of Illinois.

JANE A. CRAIG.

MILWAUKEE ALUMNAE ASSOCIATION

The Milwaukee Alumnae Association started its meetings for the year 1920-1921 with a luncheon at the College Women's Club, October 16. Twenty-seven members were present, and after the luncheon we adjourned to the parlors of the club for a business meeting, Mrs. Kachel, our new president, presided at that time.

Other new officers are, Miss Amy Allen, corresponding secretary, and Miss Florence Beatty, secretary and treasurer. A committee of three members, Mrs. Berry Williams, Mrs. Chamberlain, and Mrs. Kieckhefer, was appointed to act with the officers as an executive committee.

A number of Kappas came down from Sheboygan to attend the meeting, and joined the association. We are hoping they will be able to be with us every month.

Everybody was enthusiastic over the prospects for the year, and we are all planning that this will be one of the most successful winters that the association has ever had.

FLORENCE E. BEATTY.

ST. LOUIS ALUMNAE ASSOCIATION

During the late spring and summer there was so great a revival of interest in our association through seeking to have an active chapter of Kappa Kappa Gamma established at Washington University that the as-

sociation overlooked its precedent of discontinuing meetings during the vacation period and held constant committee meetings, as well as the regular once a month meetings all during the summer.

A group of splendid girls was selected by and pledged to this association before the close of the semester in June although not yet permitted group recognition on the campus because of local University regulations. This group together with the Alumnae of Kappa Kappa Gamma entered the college season in competition with the established fraternities, abiding by Panhellenic rules. This resulted in pledging to the group, seven most desirable girls from St. Louis and its environs, all of whom were on the date lists of other fraternities and two of whom received written bids. Since records from the Washington University freshman class show that of the five hundred freshmen enrolled, but sixty were pledged to the existing fraternities, we believe this is an opportunity for Kappa and are eagerly awaiting the inspection of our group by our Grand President.

Notwithstanding these activities the association has been busy raising money for various charity obligations among which are The Needlework Guild of St. Louis and the Students' Aid Fund.

Mrs. J. T. Johnson, junior (Margaret Anderson, Theta), was elected alumnae delegate to Convention with Mrs. James McNaughton (Marie Bryden, Theta), as first alternate.

On May 17, 1920 announcement was made of the engagement of Miss Gladys Udell, Theta, to Mr. Edward B. Orr, Phi Gamma Delta, both of the class of 1917 at Missouri State University. Mr. Orr was Executive Secretary of the 4th Red Cross Roll Call for the Southwestern Division and Director of Disaster Relief. He has just been made Director of Civilian Relief for the Southwest. Miss Udell resides on Union Ave., St. Louis.

Born to Dr. and Mrs. J. E. Stewart (Gertrude McLain, Theta), a baby girl named Jean.

Ann Stratton Miller, of Beta Xi and St. Louis Alumnae Association, has moved to New York where she will continue her musical compositions.

Mrs. Franklin Miller (Maude Barnes, Theta) has been ill during the summer but is improving.

Mary Henderson, Mu, and Corinne Kramer, Theta, are taking regular work at Washington University this year and are coöperating with our group there.

Seven Kappas from Theta Chapter who assisted the girls at the college are Vitula Van Dyne, Maxine Christopher, Gladys Haux, Jane Rodgers, Kathleen Pitsell, Mary Bess Merservy and Mary McAuliff.

Kappas we are happy to welcome to this association are Mary Henderson, Mu, Mrs. Eugene Violette, (Hallie Hall, Iota), Miss Clara Townsend, Omicron, Corinne Kramer, Theta, Miss Louise Stevenson, Mu, Mrs. Thomas E. Martin (Doris Brownlea, Beta Zeta), Ava Steele, Theta, and Mrs. Harry Howell, Lambda.

Our Jubilee Tea in October at the home of Mrs. Chas. N. Peck (Maybelle Price, Theta) was enjoyed by many of the alumnae members.

Kappa guests for the day were Ruth Eversole and Mary Margaret Shore Brownlea, both of Theta.

Our association pledges gave us a delightful afternoon on October 21, at the Lindell Boulevard home of one of the group. After tea was daintily served a clever little stunt originated by the girls surprised and pleased us all. Mrs. Warren White was a visiting Kappa.

All visiting Kappas as well as those whose homes are in St. Louis will find a cordial welcome at our meetings the second Wednesday of each month, if they will telephone Mrs. Charles Houts, our president.

ESTELLE HAM CANNON.

KANSAS CITY ALUMNAE ASSOCIATION

Miss Helen Ross, Theta, who for several years taught in the high school in her home town of Independence, Mo., and for the past two years has been engaged in government work in Washington, is now attending a school of economics in London.

Several weddings have occurred among our younger members. Two marriages were in April: Virginia Lucas, Omega, married Ames P. Rogers, and is living in Abilene, Kansas; Mary Martin, Omega, was married to Ralph Metcalf, Sigma Chi, and we are pleased to note, will remain in Kansas City, and in our Alumnae Association.

On June 1, Marie Rosher, Theta, and Mr. Albert Ritchey, were united in marriage. They make their home in Salina, Kansas.

Margaret Hughes, Omega, afterward affiliated with Theta, was married June 7, to Dr. C. Edgar Virden, Beta Theta Pi. They now live in Norton, Kansas.

The marriage of Frances Maxwell, Theta, to Roy E. Stone took place August 10, and they are living in New Orleans.

Eleanor Grubbs, Theta, formerly of Missouri City, and Julian Ringo were married in October. They reside in Kansas City.

On October 9, Emily Lois Fitch, Theta, married Mr. Fred B. Jenkins, Jr. We are gratified to know we shall not lose Emily from our midst.

BIRTHS

At Coblenz, Germany, on July 30, the stork left a small daughter, Betty, with Mr. John H. Welsh, Lieutenant, U. S. A. and Mrs. Welsh. Mrs. Welsh was formerly Miss Meta Sheaff, of Kansas City, Kansas.

Mr. and Mrs. William A. Lewis announce the birth, September 17, of their daughter, Sarah Lillian. Mrs. Lewis is from Beta Lambda.

GRACE BORLAND.

THE DENVER ALUMNAE ASSOCIATION

Weddings. Weddings. Weddings. Of such is the D. A. A. made.

Dorothy Hale, Beta Mu, and William Sanborn, Beta Theta Pi.

Amy Pitkin, Beta Mu, and Robert Stearns, Beta Theta Pi.

Helen Boot, Beta Mu, and Richard Olsen, Sigma Chi.

Sarah Roach, Beta Omicron, and Harry Boot, Beta Theta Pi.
Katharine Morley, Beta Mu, and Frederic Shelton, Alpha Delta.
June Magnan, Beta Mu, and Griffen Temple, Sigma Chi.

and more to follow.

We all enjoyed having Miss Sarah Harris with us in August but her fly-away trip was all too short.

Bessie Low Ireland, Beta Mu, has a new little daughter, as has Kate Nelson Houston, Beta Mu; while Ruth Musser Huffman, Beta Mu, has a dear little junior in her home. Lois Davis Scott, Gamma Beta, has a new son, so you see our association is growing all the time.

Georgiebelle Musser who spent last year in Porto Rico is home in Denver for the winter, and Elizabeth Harrington, Beta Mu, is back from a six months' trip to Japan and China.

We were all saddened by the death of Judge James Brewster, the father of Susan Brewster Wheelock, Beta Mu, and Edith Brewster, Beta Mu.

Our association is keenly interested in Hospital 21, or the Recuperation Camp, which is situated very near Denver, and will have a birthday cake for each of the boys in the Infirmary. We are making the slumber robes that you all knitted during the war, for they are most acceptable, as many of the boys can sit up fifteen or twenty minutes a day. If any of the chapter or associations have any yarn please send them to the corresponding secretary of our association, and we will gladly pay the postage and make the very best use of your yarn.

Our association is always glad to have any visiting Kappas come to our monthly luncheons, so you are all welcome.

ELFRIDA V. VAN METER.

CEDAR RAPIDS ASSOCIATION

Mrs. R. C. Alt, and Mrs. R. G. Cushman staged the grand event of our alumnae association series when they secured our Grand Vice-president, Mrs. Kemp, for the guest of honor at tea in Mrs. Alt's home, October 27. The occasion was lovely in every detail, the Kappa blue and blue pervading decorations and refreshments, even to the corsage for Mrs. Kemp.

Of course, "Convention" was the topic of most of the conversation and Mrs. Kemp's informing account of the work of many other alumnae associations was interesting to the point of inspiring. We passed around the Christmas cards and resolved to do many things right soon. We are looking forward to an au revoir with Mrs. Kemp for a happier way to have a tea, we do not know.

Mrs. Clyde Stephens, who was secretary and treasurer of our association for some time, has moved away, and oh!—how we do miss her! Mr. Stephens who was head of the piano department at Coe College for several years is now holding a similar position with the Northwestern Conservatory of Music at Minneapolis, Minn.

Mrs. Wallace Hamilton (Hazel Hall—Beta Zeta) has a new baby girl.

Mrs. M. Adams (Catherine Lovell, Beta Zeta) also has a baby girl.

Mrs. Stuart Holmes (Josephine Scarff, Beta Zeta), our president, leaves November 15, for Enid, Oklahoma, to visit her father and mother. I am sure we shall all miss her at our regular monthly meetings.

MARY VAN DERVEER CUSHMAN.

DES MOINES ALUMNAE ASSOCIATION

We are happy to write in our first letter to *THE KEY* of the enjoyable visit of our Grand Vice-president, Mrs. Kemp.

During her stay in Des Moines, she was the house guest of Irene Townsend, 604 54th St., and the recipient of many social affairs.

Arranged by the Kappa alumnae was the luncheon of Saturday, October 23, in the Harris-Emery Tea Room where twenty-six enthusiastic Kappas were seated at tables decorated with chrysanthemums and autumn leaves. We were pleased to have as our guests: Mrs. Horace Hedges, Beta Zeta, Cedar Rapids, Ia.; Beatrice Blackman, Beta Zeta, Ottumwa, Ia.; Margaret Mulroney, Beta Zeta, Iowa City, Ia.; Elizabeth Engelbeck, Beta Zeta, Iowa City, Iowa; Louise Carlisle Perley, Sigma, Missouri Valley, Iowa; and the officers of Epsilon Tau Sigma of Drake University; Agnes Buchanan, Eleanor Morning, Norma Mershon, Eleanor McRae.

Following the luncheon the Epsilon Tau Sigma chapter entertained Mrs. Kemp at the Drake-Missouri football game and later gathered at the home of Maxine Van Meter for a spread and social evening.

On Sunday afternoon, Irene Townsend was at home to the Kappas, and Epsilon Tau Sigma active and alumnae girls. The only regrettable thing about Mr. Kemp's visit was that it was altogether too short, but we are hoping she will come again.

Miss Alice Loos, Beta Zeta, Superintendent of the Educational Department of Denecke's Store, Cedar Rapids, Iowa, was a guest at our October Tea.

Kappas were active in the recent political campaign. Miss Elizabeth Muse, Upsilon, of Mason City, served as secretary to Mrs. Frank Dodson, chairman of the Women's Division of the State Republican Organization. Mrs. H. R. Howell, Upsilon, was a member of the Speaking Bureau of the same organization. The Democrats had their representative in the person of Mrs. J. W. Cokenower who acted as Democratic chairman of her precinct and as Election Judge.

Miss Julia Haymond Watson, B. O., a graduate of the National School of Elocution and Oratory, Philadelphia, who has for a number of years directed her own private school of Expression in Des Moines, has been engaged as Dramatic Art Instructor of Central College, Pella, Iowa. The first week in December she will put on a pageant celebrating the tercentenary of the landing of the Pilgrims. This position will not take Miss Watson from the city all time for she is maintaining special classes and special pupils in Des Moines.

Louise Carlisle, Sigma, was married to George Perley, of Des Moines, October 9, at her home in Missouri Valley, Iowa. One of the interesting features of the wedding was that she wore her mother's wedding dress of thirty years ago. Mrs. Perley has been with us for two years, while taking kindergarten work at Drake University, where she affiliated with the Epsilon Tau Sigma Sorority. After a short wedding trip she will be at home in Des Moines.

We were glad to see during Iowa State Teachers' Convention, Flora Cooper, Beta Zeta, teacher in Council Bluffs, Iowa, High School, and Carolyn Newcomb, Beta Zeta, teacher in Cedar Rapids High School.

Miss Pearl Harrington Bennett, Beta Zeta, has just returned from a Chautauqua season, as manager and director of the Harrington Bennett Play Company, playing on Redpath-Vawter Circuit.

MRS. A. N. SWAN.

DALLAS ALUMNAE ASSOCIATION

The Dallas Kappas are trying a new plan for their meetings this year. Instead of down-town luncheon every month there are to be teas, bridge parties and theatre parties.

The new officers of the association are: Mrs. W. J. Lowther, president; Mrs. W. A. Dealey, vice-president and corresponding secretary, and Nora Crane, secretary and treasurer.

The Texas Kappas feel greatly honored that Della Lawrence was made Grand Secretary at Convention.

Mrs. D. D. Otstott gave an interesting account of Convention to the Dallas Kappas.

Katherine Ball has a position with the Extension Department of Texas University, and will be located in Dallas until after Christmas.

Bess Ferguson, has been promoted to teacher of Economics in one of the Dallas High Schools.

Sadie Scovell is teaching in Dallas.

Dorothy Baker will be duchess from the University to the Cotton Palace at Waco. Vivian Rogers will be her maid.

MRS. WALTER A. DEALEY.

BETA THETA ALUMNAE ASSOCIATION

Six Oklahoma Alumnae attended convention: Nellie Jane McFerron, Ruth Klinglesmith, Dorothy Snedaker, Buena King, Marion Severance and Thyra Head.

Cupid has again invaded our ranks, taking six of our fair sisters this time: Louise Wilcox, '20, of Durant was married June 16, to Merwin Buxton, Beta Theta Pi, and will be at home in Enid, Oklahoma; Fritzie King, '19, was married September 1, to Alexander R. Currie, Phi Delta Theta, of Chicago and will live in Oklahoma City. Edith Ross, '17, was married September 7, to Walter L. Ditzler, Phi Gamma Delta, who will make their home in Tulsa. Vesper Botts was married in Salt

Lake, September 8, to A. J. Trodick, and will live in Great Falls, Montana. Announcement has been made of the engagement and approaching wedding of Louise Bierer, '18, to Walter G. Pierce of Oklahoma City.

Several Kappas have attended school this summer—Mary Reid, Mrs. C. C. Cole, Floy Elliott at Northwestern University, Perrill Munch, at Leland Powers, Boston; Lottie Conlan and Barbara Schlabach at Parsons Art School, New York City. Lottie will remain in New York for the winter term at Parsons.

Oklahoma City Kappas have formed an Oklahoma City Kappa Club with Mrs. Walter Slagle, Omega, president, Helen Thorton, Beta Theta, secretary, Adelaide Lutz, Gamma Alpha, vice-president and Mrs. Surratt Theta, treasurer.

IRIS M. BAUGHMAN.

LOS ANGELES ALUMNAE ASSOCIATION

We welcome a number of Kappas just out of college this year and feel that they will give us freshness and inspiration. We also are most cosmopolitan. Our Blue Book for the year contains the names of members from every chapter, not only one, but two or three, and in some cases half a dozen. This is bound to keep us, on the Coast, from the fault and charge of being local and conservative in our feelings.

We entertained at a tea in August at the home of Ellen Andrews, our president, in honor of Miss Sarah B. Harris, our newly elected Grand President. Her visit came at a time when many of the younger active Kappas were at home from Stanford and Berkeley to join with us in welcoming her. Miss Harris gave us an interesting account of the convention at Mackinaw; also her views and aims for Kappa which must prove an inspiration to us all.

Three of our members, Miss Florence Gates, Mrs. F. S. Albertson, and Miss Hazel Hanna attended the convention and returned with enthusiastic reports of the meetings and outside gaities.

Mrs. Eugene Ward, Beta Eta, now of the Cleveland Association, was a welcome visitor at our tea at Ellen Andrews'. Mrs. Earl Knepper (Anita Perrin) and daughter, Barbara, have left for Singapore, to join her husband who is associated with the Guggenheim forces, and she was extensively entertained before her departure.

We are mourning with Miss Florence Gates in the loss of her father who was taken away very suddenly.

Our Charter Day luncheon was held at the home of Mrs. Kate Thomas, Pasadena, and enjoyed by fifty members, seated at small tables on the piazza. A business meeting was held afterward when Ellen Andrews, our new president, gave us her views on our work for the coming year, which included plans for raising our Students' Aid Fund. We wish also to assist in some local charity and a committee was appointed to consider the one most consistent with our line of work.

We anticipate a happy year's work together.

GRACE A. VAN DORN.

ANNOUNCEMENT

From Boston Alumnae Association.

Will the chapters and alumnae associations please inform their members who are studying, in business, living or visiting in or near Boston, that on Thursday of each week Kappas are meeting for lunch at the Business Women's Club, 144 Bowdoin Street, Boston, at one o'clock. The lunches are served cafeteria and are moderate in price. No notice is necessary; just drop in when you are in the city and meet other Kappas.

GENEVIEVE ELDER, *Secretary.*

STUDENT'S AID FUND

CONTRIBUTIONS

Pi Chapter	\$ 25.00
Eta Chapter	100.00

APPLICATIONS APPROVED

Member of Beta Mu Chapter	\$500.00
Member of Beta Phi Chapter	200.00
Member of Gamma Eta Chapter.....	300.00

Loans made within last four months amount to \$3,400.00. This makes over \$11,000.00 now out in loans to Kappas only.

CHARLOTTE P. GODDARD, *Chairman.*

In Memoriam

RUTH PEIK

Chi Chapter is mourning the loss of one of its most precious members, Ruth Peik, whose death occurred August, 1920.

Ruth has worn her key just a year, and has worn it most worthily. Her outer beauty was but the expression of an inner beauty, a heart strong and true, a soul beautiful and unafraid. Her spirit hovers around us, making us all finer women. Our ritual will now have a deeper meaning because Ruth has loved it; our life together will be more intimate because of our love for her; and our quest along the way to which the key points will be easier because Ruth has *lived* the Kappa ideal. And we thank the good God for having given for even one short year, a *true* friend and a perfect sister.

JEAN ELMQUIST, *Chi*.

ESTHER GRIFFIN MILLER

It is with the deepest regret that Beta Alpha chapter and the Philadelphia Alumnae Association record the death of Esther Griffin Miller, initiated March 7, 1914, who died August 30, 1920. Esther was ever a Kappa, loyal and true to the end. During her Kappa life she was active in many ways, being president of Beta Alpha chapter in 1915-1916, delegate to Convention in 1916, and after that time an ardent member of the Philadelphia Alumnae Association. Her influence for good, her high spirits, and her lofty ideals which were always such an inspiration, are sadly missed by all those who mourn her death.

FLORENCE C. PUMYEA, *Beta Alpha*.

KATHLEEN CARTER MOORE

(Mrs. J. Percy Moore)

It is with deep sorrow that Beta Alpha announces the death in July of Kathleen Carter Moore. Mrs. Moore was a charter member of Beta Alpha and kept throughout the years her interest in the fraternity and enthusiasm for it. She was a valued member of the Philadelphia Alumnae Association where the charm of her personality made her beloved by all.

Mrs. Moore held an important place in educational circles and as a psychologist. In 1892 she married Dr. J. Percy Moore. She majored in psychology for her Ph.D. which she received in 1896. Her thesis, "The Mental Development of a Child," was based upon studies of her little son. She had also a large amount of data from observations on the three younger children which she was incorporating into two books at the time of her death. Mrs. Moore was a member of the American Psychological Association.

During the war she gave considerable time to Red Cross and other war activities. Her untimely death will be deeply felt by all who knew her. We wish to extend to her husband and children our heartfelt sympathy.

HELEN EUSTON EVANS, *Beta Alpha*.

FRANCES CRAIG WESTCOTT, *Gamma Alpha*.

Born October 1, 1899. Died July 23, 1920, while swimming in Lake Whitmore, Michigan.

Initiated into Kappa Kappa Gamma at Kansas State Agricultural College, Manhattan, Kansas, on May 30, 1918.

Finished two years at Manhattan and entered Washington University at St. Louis. Had one more year to complete.

Buried July 29, in Mount Hope Cemetery near her home at Galena, Kansas.

DIRECTORY OF MEETINGS

CHAPTERS

Any member of Kappa Kappa Gamma is cordially invited to attend meetings of the active chapters.

PHI

meets Wednesday afternoons at 5:30 at the chapter rooms, 551 Boylston St., Boston, Mass.

BETA SIGMA

meets every Wednesday afternoon at the College House, 68 St. James Place, Brooklyn, N. Y. Supper meetings first and third Wednesdays. We are glad to welcome any Kappas who are in Brooklyn or New York.

BETA ALPHA

meets every Monday, 7 P. M. at the chapter rooms, 3433 Walnut Street, Philadelphia, Pa.

BETA IOTA

meets at seven-thirty on Wednesday evenings in a room set aside as a chapter room, in the girls' dormitories, Swarthmore, Pennsylvania.

PSI

meets at the Kappa Kappa Gamma House, Overlook Road, Cayuga Heights, Ithaca, New York, every Saturday evening at 7:30.

BETA TAU

meets every Friday evening at seven-thirty o'clock in the chapter house at 907 Walnut Avenue, Syracuse, New York.

BETA PSI

meets every second Monday at eight o'clock at the homes of the girls in the city. Definite information may be had by telephoning Marjorie Goulding, Kenwood 3536.

BETA BETA

meets every Monday night, at Kappa Lodge, Canton, N. Y.

GAMMA RHO

meets every Saturday night at eight o'clock in the chapter rooms on the fourth floor of Hulings Hall, Meadville, Pennsylvania.

BETA UPSILON

meets every Tuesday evening, at 7 P. M. at the chapter house, 120 High Street, Morgantown, West Virginia.

LAMBDA

meets every Wednesday afternoon at four, on the third floor of Curtice Cottage, campus of Akron University.

BETA NU

meets every Monday evening at 7 in the chapter rooms, 1894 North High Street, Columbus, Ohio. Call Margaret Wood, North 2224.

BETA RHO

meets every other Saturday afternoon, at the homes of the girls.

IOTA

meets every Saturday evening at the chapter house on Washington and Locust Streets.

MU

will hold meetings at two o'clock on Tuesday afternoons at the homes of the Irvington girls. By calling Irv. 352 (old Phone), the place may be learned.

DELTA

meets every Monday evening at the chapter house in Forest Place, Bloomington, Indiana.

BETA CHI

meets on Thursday afternoon at four o'clock at the fraternity house on Maxwell Street, Lexington, Kentucky.

BETA DELTA

meets in the chapter house, on the corner of Church Street, 1204 Hill Street, Ann Arbor, Michigan.

XI

meets at half after seven o'clock on Saturday evenings, in the chapter rooms, in South Hall, Adrian College, Adrian, Michigan.

KAPPA

meets every Friday at 4 P. M. at the chapter house, 328 West Street, Hillsdale, Mich. Communicate with Lucille Stoddard at chapter house, telephone 157.

CHI

meets every Monday at 5:15 P. M. at 329 10th Ave., Minneapolis, Minn.

ETA

meets every Monday evening at seven P. M., at the chapter house, 425 Park Street, Madison, Wisconsin.

UPSILON

meets on Monday at 5 P. M., Willard Hall, Evanston.

EPSILON

meets on Monday afternoons at four-thirty in the Kappa Hall in the main building of the university.

BETA LAMBDA

meets every Monday evening in the chapter house, 502 Chalmers Avenue, Champaign, Illinois.

BETA ZETA

meets at 226 S. Johnson Street every Monday at 7 P. M.

THETA

meets Monday evening at seven at the chapter house, 600 Rollins Street, Columbia, Missouri.

OMEGA

meets every Monday evening at seven o'clock at the chapter house, 1602 Louisiana Street, Lawrence, Kansas.

GAMMA ALPHA

meets every Wednesday at 7 P. M. at the chapter house, 1408 Laramie, Manhattan, Kan.

SIGMA

meets on Monday evening at seven-fifteen o'clock at the fraternity house, 312 N. 14th Street, Lincoln, Nebraska.

BETA MU

meets in the Kappa house, 1221 University Avenue, Boulder, Colorado, at seven on Monday evenings during the college year.

BETA THETA

meets every Monday evening at seven-thirty at the Kappa House, 535 University Boulevard, Norman, Oklahoma.

BETA XI

meets Wednesday evenings at seven-fifteen in the chapter house, 707 W. 24th St.

BETA OMICRON

meets every Monday afternoon at four o'clock.

BETA PHI

meets every Monday evening at eight o'clock at the chapter house, 330 Connell Ave., Missoula, Montana.

BETA PI

meets every Monday from four to six, at the chapter house, 4504 18th Avenue, North East, Seattle, Washington.

BETA OMEGA

meets every Monday evening at seven o'clock in the chapter house.

BETA KAPPA

meets every Tuesday evening at seven at the chapter house, 805 Elm Street, Moscow, Idaho.

PI

meets every Monday evening, at seven-thirty, in the chapter room of the Kappa house, 2725 Channing Way.

BETA ETA

meets every Monday evening at seven-ten in the chapter room.

GAMMA BETA

meets at the Kappa Kappa Gamma House, University Heights, Albuquerque, New Mexico, every Monday evening at 7:30 o'clock.

GAMMA EPSILON

meets every Monday evening at 7:15 at the Heinz House, University of Pittsburgh.

GAMMA DELTA

meets Thursdays, 6:30 p. m., chapter-house, 124 Marsteller Street.

ASSOCIATIONS

AUSTIN ASSOCIATION

For dates and places of meeting, address Miss Sue K. Campbell, 2208 Antonia St., Austin, Tex.

BETA ETA ASSOCIATION

Meets four times a year at the homes of members. For dates and places of meeting, address Mrs. F. Gloucester Willis, 2550 Gough St., San Francisco, Cal.

BETA IOTA ASSOCIATION

Meets in January, March, May, and October on the second Saturday in the month. Address Mrs. Watson Magill, Oak Lane, Philadelphia, Pa.

BLOOMINGTON, ILLINOIS, ASSOCIATION

Meets at the homes of members. For places and dates of meetings, address Mrs. Louis Kuhn, 1305 S. Fell Ave., Normal, Ill.

BLOOMINGTON, INDIANA, ASSOCIATION

Meets each month at the homes of members. For dates and places, address Mrs. Ethel Smith Hobbs, Bloomington, Ind.

BOSTON ASSOCIATION

Meets the first Saturday of each month. For places of meeting, address Miss Virginia T. Taylor, 1 Oakdale Ave., Dedham, Mass.

BOULDER ASSOCIATION

Meets at homes of members. For places, address Marion Klingler, 1040 Mapleton Ave., Boulder, Colo.

CEDAR RAPIDS ASSOCIATION

Meets once a month at the homes of members. For places and dates, address Mrs. Clyde Stephens, 1751 A Ave., Cedar Rapids, Iowa.

CHAMPAIGN-URBANA ASSOCIATION

Meets four times in the school year at private homes. For places and dates address Mrs. L. R. Hubbard, 1506 W. Park Ave., Champaign, Ill.

CHICAGO ASSOCIATION

Meets the second Saturday of each month for luncheon. For dates and places, address Mrs. Dwight P. Green, 914 E. 53rd St., Chicago, Ill.

CINCINNATI ASSOCIATION

Meets the first Saturday of each month. For places of meeting, address Miss Ruth Guhman, 240 Hosea Ave., Cincinnati, Ohio.

CLEVELAND ASSOCIATION

Meets the second Saturday of the month at the homes of the members. For places of meeting, address Mrs. E. V. Ward, 2026 Cornell Road, Cleveland, Ohio.

COLUMBUS ASSOCIATION

Meets the first Saturday of each month at the homes of members. For places of meeting, address Mrs. Leslie R. Wells, 278 North Ohio Avenue, Columbus, Ohio.

DALLAS ASSOCIATION

Meets the first Saturday in each month at the Oriental Hotel. For further information, address Mrs. Sawnee R. Aldridge, 3526 Cedar Springs Road, Dallas, Tex.

DENVER ASSOCIATION

Meets the last Saturday in each month at the homes of members. For places, address Miss Elfrida Van Meter, 1326 Columbine St., Denver, Colo.

DETROIT ASSOCIATION

Meets the second Saturday in each month from September to June. For places, address Miss Maude Munro, Cass Technical High School, Detroit, Mich.

FALLS CITIES ASSOCIATION

Meets in September, January, and May at members' homes, November and March at Vienna Restaurant. For exact dates, address Miss Clara I. Eaken, 229 E. Maple St., Jeffersonville, Ind.

FRANKLIN NU ASSOCIATION

For dates and places of meeting address Mrs. F. W. Erther, 846 W. 30th St., Indianapolis, Ind.

HOUSTON ASSOCIATION

For dates and places of meeting, address Mrs. Fred Parker, St. James Apt., Houston, Texas.

INDIANAPOLIS ASSOCIATION

Meets the third Friday of each month. For places of meeting, address Mrs. Theodore Vonnegut, 1221 Park Ave., Indianapolis, Ind.

KANSAS CITY ASSOCIATION

Meets the first Saturday of each month. For places of meeting, address Mrs. A. J. Thompson, 3832 Warwick Blvd., Kansas City, Mo.

LAWRENCE ASSOCIATION

Meets the second Friday of each month at homes of members. For places of meeting address Miss Alice M. Guenther, 641 Ohio St., Lawrence, Kan.

LINCOLN ASSOCIATION

For dates and places of meetings, address Mrs. Samuel C. Waugh, 2501 Bradfield Drive, Lincoln, Neb.

LOS ANGELES ASSOCIATION

Meets the third Saturdays of each month from October to June, at the homes of the members. For places, address Miss Lois Collins, 1401 Manhattan Pl., Los Angeles, Cal.

MILWAUKEE ASSOCIATION

Meets the third Saturday of each month. For places of meeting, address Miss Amy Allen, 126 19th St., Milwaukee, Wis.

MONTANA ASSOCIATION

Meets alternate Monday nights at the homes of members. For places and dates, address Miss Mary Elrod, 205 S. 5th St. E., Missoula, Mont.

MORGANTOWN ASSOCIATION

Meets the first Tuesday in each month at the homes of members. For places of meeting, address Mrs. C. Edmund Neil, 239 Spruce St., Morgantown, W. Va.

MUNCIE ASSOCIATION

Meets each month at the homes of members. For dates and places of meeting, address Mrs. H. H. Orr, 112 S. Monroe St., Muncie, Ind.

NEW YORK ASSOCIATION

For dates and places of meeting, address Mrs. Guy S. Walker, 924 West End Ave., New York, N. Y.

NORTH SHORE ASSOCIATION

Meets the first Wednesday in each month at the homes of members for luncheon. For places of meeting, address Miss Kathryn Goss, 905 Forest Ave., Evanston, Ill.

OKLAHOMA ASSOCIATION

Four times during the year at the Skirvin Hotel, Oklahoma City, Okla. For dates, address Miss Iris Baughman, 730 E. 9th St., Oklahoma City, Okla.

PALESTINE ASSOCIATION

Meets first Saturday in each month, Redlands Hotel, Palestine, Tex. Address Mrs. Webb Wright, 310 E. Kolstad St., Palestine, Tex.

PHILADELPHIA ASSOCIATION

Meets at homes of members, alternating second Tuesday and second Saturday of months from September to June. Address Miss Mildred Goshow, 428 Conarroe St., Roxborough, Pa.

PI ALUMNÆ ASSOCIATION

Meets every two months at homes of members and at Kappa House. For further information, address Mrs. H. W. Tomlinson, 588 Jean St., Oakland, Cal.

PITTSBURGH ASSOCIATION

Meets bi-monthly at the homes of members. Address Hazel Emery, 5923 Alder Street, Pittsburgh, Pa.

PORTLAND ASSOCIATION

Meets first Saturday of each month at the homes of members. For further information, address Mrs. T. G. Williams, 962 E. Ninth St., Portland, Ore.

ST. LOUIS ASSOCIATION

First week in each month, except July and August, at homes of members. For places and dates of meeting address Miss Florence R. Knapp, 410 Arundel Pl., St. Louis, Mo.

SOUTH BEND ASSOCIATION

Meets at homes of members, the third Monday of October, December, March, and May. For places of meeting, address Mrs. Elizabeth G. Seebirt, 634 N. Lafayette Blvd., South Bend, Ind.

SYRACUSE ASSOCIATION

Meets once a month at the homes of members, or at the chapter house. For dates and places of meeting, address Miss Adelaide Simonds, 6254 Westcott St., Syracuse, N. Y.

WALLA WALLA ASSOCIATION

Meets once a month. Address Miss Henrietta Baker, 2nd and Alder Sts., Walla Walla, Wash.

WASHINGTON ASSOCIATION

Meets the first Saturday of every month at the homes of the members. For places of meeting, address Miss Celia D. Shelton, 2904 Franklin Ave., Seattle, Wash.

WESTERN NEW YORK ASSOCIATION

Meets third Saturday of each month at homes of members. For dates and places, address Mrs. Byron A. Johnson, 511 Woodbine Ave., Rochester, N. Y.

CLUBS**ADRIAN CLUB**

Meets once a month at the homes of the members. For places and dates, address Mrs. Florence Worden, 141½ W. Maumee St., Adrian, Mich.

BETA GAMMA CLUB

For information, address Miss Florence McClure, Larwell St., Wooster, Ohio.

BETA SIGMA CLUB

Meets the third Wednesday of every month. For information, address Mrs. Ella D. Romig, 145 West 12th Street, New York, N. Y.

GAMMA ALPHA CLUB

For information as to places and dates of meetings, address Miss Hazel Groff, Nortonville, Kan.

IOTA CLUB

For place and date of meetings, address Mrs. Helen O. Sigmund, Crawfordsville, Ind.

IOWA CITY CLUB

For information address Mrs. Annette Cannon, Iowa City, Iowa.

LAMBDA CLUB

Meets for luncheon the first Saturday of each month at one o'clock at the Portage Hotel. Address Miss Ruth Harter, 544 Market St., Akron, Ohio.

MINNESOTA CLUB

Meets the third Friday of each month. For places of meeting, address Mrs. Edwin Brown, 1929 Fremont Ave., Minneapolis, Minn.

MU CLUB

Address Miss Elsie Felt, 64 N. Irvington Ave., Indianapolis, Ind.

NEWCOMB CLUB

For places and dates of meetings, address Mrs. John Pratt, 1230 State St., New Orleans, La.

OMAHA CLUB

Meets the first Saturday of every month at the homes of the members. Address Miss Mary Alice Duval, 4912 Underwood Ave., Dundee, Omaha, Neb.

ST. JOSEPH CLUB

Meets the first Saturday of each month at the homes of members. For places, address Margaret Corlet, 1719 Faraon St., St. Joseph, Mo.

TOPEKA CLUB

For places and dates of meetings, address Mrs. Frank D. Nuss, 1621 Clay St., Topeka, Kan.

TRI CITY CLUB

For information, address Miss Ethel McKown, 2425 Brady St., Davenport, Iowa.

TULSA CLUB

Meets the first Saturday of each month at the homes of members. For places, address Mrs. S. Miller Williams, Jr., 3 Manhattan Court, Tulsa, Okla.

ESTABLISHED IN 1876

J·F·NEWMAN

Official Fraternity Jewelers

Manufacturers -- Importers -- Designers

of

Fraternity Badges
Fraternity Jewelry for Men
Fraternity Jewelry for Women
Army and Navy Jewelry
Diamond Engagement Rings
Chapter Wedding Gifts
Medals and Trophies
Gold Foot Balls, Base Balls, Etc.
Society Pins, Rings, Keys
Classpins and Rings
Silver and Bronze Memorials

Originators of the Chapter Roll of Honor
in solid metal, showing names of members
in service. In use by Chapters, Clubs,
Lodges, Banks and Business Houses.

Please send catalogues on subjects checked on
above list of productions.

Name..... Fraternity.....

Address

(Tear out page and mail to nearest office)

NEW YORK
11 John Street

KANSAS CITY
105 E. 11th Street

SAN FRANCISCO
150 Post Street

CHICAGO
31 N. State St.