

# The Key

Official Organ of Kappa Kappa Gamma

---

Volume XXIV

February, 1907

Number 1

---



## Board of Editors

Editor-in-Chief—Mrs. Frederick W. Potter, Hill Crest, Peabody, Kansas.

Exchange Editor—Miss Elizabeth Rhodes,  
18 McDonough Street, Brooklyn, N. Y.

Alumnae Editor—Mrs. Guy Walker, - 504 W. 112th Street, New York.

## Contents

---

STANFORD IDEALS, <i>David Starr Jordan</i> .....	9
THE PAN-HELLENIC, <i>Lucy Sprague</i> .....	14
WEST VIRGINIA UNIVERSITY, <i>J. M. Callahan</i> .....	19
INSTALLATION OF BETA UPSILON, <i>Virginia Zane Wilbur</i> .....	23
PARTHENON:	
The Student Government Convention, <i>Juliet Stuart Points,</i> <i>Beta Epsilon</i> .....	26
Opposition to Fraternities, <i>Florence A. Boole, Beta Sigma</i> ..	27
The College Student and Religion, <i>Josephine L. Reed, Beta</i> <i>Alpha</i> .....	29
To the Alumnae, <i>M. Louise Dyer, Phi</i> .....	31
EDITORIAL.....	32
ALUMNAE ASSOCIATION LETTERS.....	56
IN MEMORIAM.....	62
ALUMNAE PERSONALS.....	63
EXCHANGES.....	75

---

Subscription price, one dollar per year.

Published quarterly by the Kappa Kappa Gamma Fraternity in February, May, October and December, at the office of Burd & Fletcher Printing Co., 717-19 Wyandotte St., Kansas City, Mo.

---

Application has been made for entry as second class matter at the Kansas City, Mo., postoffice according to the act of 1879.



MARY DECKERT GRIFFITH,  
Grand President.



GEORGE CHALLONER,  
Grand Secretary.



ELIZABETH VORIS LAWRY,  
Grand Treasurer.



EDITH STONER,  
Grand Registrar.





# Fraternity Directory.

## Grand Council.

- Grand President*—MARY DECHERT GRIFFITH,  
1529 Green St., Philadelphia, Pa.  
*Grand Secretary*—GEORGE CHALLONER,  
456 New York Ave. Oshkosh, Wis.  
*Grand Treasurer*—MRS. GEORGE V. LAWRY,  
Box 820, Vancouver, B. C.  
*Grand Registrar*—EDITH STONER,  
1529 Wabash Ave., Kansas City, Mo.

## Officers.

- Editor of Key*—MRS. FREDERICK W. POTTER,  
Hill Crest, Peabody, Kan.  
*Historian*. . . . .  
*Director of Catalog*—MARY R. SCATTERGOOD,  
471 N. Marshall St., Philadelphia, Pa.  
*Alumnae Officer*—MRS. HERBERT S. MALLORY,  
1019 Park St., Grinnell, Ia.

## Deputies.

- Grand President's Deputy*—SARAH PLEIE MILLER,  
2009 N. 7th St., Philadelphia, Pa.  
*Grand Secretary's Deputy*—META STARKE,  
425 Park St., Madison, Wisconsin.  
*Grand Treasurer's Deputy*—MAYME LUCAS,  
Kappa Lodge University Station, Seattle, Wash.  
*Grand Registrar's Deputy*—MARY WALKER. . . . .Columbia, Mo.  
*Editor's Deputy*—SUSAN B. POTTER. . . . .Peabody, Kan.

## Corresponding Secretaries.

### Alpha Province.

- Phi*, Boston University. . . . .Boston, Mass.  
ELEANOR STENSON CUMMINGS, Boston University, Boston, Mass.  
*Beta Epsilon*, Barnard College. . . . .New York City  
HILDA WOOD, Hotel Marseille, Cor. 103d St. & Broadway,  
New York City, N. Y.  
*Beta Sigma*, Adelphi College. . . . .Brooklyn, N. Y.  
ETHEL M. KIPP, 1315 37th St., Flatbush, Brooklyn, N. Y.  
*Psi*, Cornell University. . . . .Ithaca, N. Y.  
CHARLOTTE BABER, Sage Cottage, Ithaca, N. Y.  
*Beta Tau*, Syracuse University. . . . .Syracuse, N. Y.  
KATHERINE WRIGHT, 718 Irving Ave., Syracuse, N. Y.  
*Beta Alpha*, University of Pennsylvania. . . . .Philadelphia, Pa.  
E. EDNA BRAMBLE, Levering & Dexter Sts., Rodborough,  
Philadelphia, Pa.  
*Beta Iota*, Swathmore College. . . . .Swathmore, Pa.  
SUSANNE YARDLY WILLETS, Swathmore College, Swathmore, Pa.  
*Gamma Rho*, Allegheny College. . . . .Meadville, Pa.  
MARY G. NICHOLS, Hulings Hall, Meadville, Pa.  
*Beta Upsilon*, West Virginia University. . . . .Morgantown, W. Va.  
BERTHA STERLING HOWLEY, Woman's Hall, Morgantown, W. Va.

### Beta Province.

- Lamda*, Buchtel College. . . . .Akron, Ohio  
COTTIE P. SHUMAN, 258 Wooster Ave., Akron, Ohio.  
*Beta Gamma*, Wooster University. . . . .Wooster, Ohio.  
MIRIAM B. HARD, University of Wooster, Wooster, Ohio.  
*Beta Nu*, Ohio State University. . . . .Columbus, Ohio.  
MARIE J. CARROLL, 47 Wilson Ave., Cleveland, Ohio.  
*Beta Delta*, University of Michigan. . . . .Ann Arbor, Mich.  
LUCRETIA HUNTER, 902 Baldwin Ave., Ann Arbor, Mich.  
*Xi*, Adrian College. . . . .Adrian, Mich.  
OLIVE N. NEER, South Hall, Adrian, Mich.  
*Kappa*, Hillsdale College. . . . .Hillsdale, Mich.  
MAUDE TERWILLIGER, 53 Howder St., Hillsdale, Mich.

## Corresponding Secretaries—continued.

### Gamma Province.

- Delta*, Indiana State University.....Bloomington, Ind.  
EDITH HALLOWAY, Kappa House, Bloomington, Ind.  
*Iota*, De Pau University.....Greencastle, Ind.  
FLETA WARD, Kappa House, Greencastle, Ind.  
*Mu*, Butler College.....Indianapolis, Ind.  
ELIZABETH N. BRAYTON, 2113 Broadway, Indianapolis, Ind.  
*Eta*, University of Wisconsin.....Madison, Wis.  
HELEN A. MUNSON, 425 Park St., Madison, Wis.  
*Beta Lambda*, University of Illinois.....Evanston, Ill.  
ANTOINETTE SCHWARZKOPF, 404 John St., Champaign, Ill.  
*Upsilon*, Northwestern University.....Evanston, Ill.  
FLORENCE SPECK, Willard Hall, Evanston, Ill.  
*Epsilon*, Illinois Wesleyan.....Bloomington, Ill.  
LAURASTINE MARQUIS, 611 E. Chestnut St., Bloomington, Ill.

### Delta Province.

- Chi*, University of Minnesota.....Minneapolis, Minn.  
CARO CHAMBERLAIN, 1758 Hennepin, Minneapolis, Minn.  
*Beta Zeta*, Iowa State University.....Iowa City, Ia.  
MARY HELEN LETTS, Gifford Flats, Iowa City, Ia.  
*Theta*, Missouri State University.....Columbia, Mo.  
RACHEL VAN DYKE, Kappa House, Columbia, Mo.  
*Sigma*, Nebraska State University.....Lincoln, Neb.  
EVA CASEY, Station A., University of Nebraska, Lincoln, Neb.  
*Omega*, Kansas State University.....Lawrence, Kan.  
AMY MERSTETER, Kappa House, Lawrence, Kan.

### Epsilon Province.

- Beta Mu*, Colorado State University.....Boulder, Colo.  
ANNA AFFOLTER, Kappa Lodge, Boulder, Colo.  
*Beta Xi*, Texas State University.....Austin, Texas.  
MAMIE SEARCY, 2010 Wichita St., Austin, Texas.  
*Beta Omicron*, Tulane University.....New Orleans, La.  
ANITA NORMAN, Newcomb College, Washington Ave.,  
New Orleans, La.

### Zeta Province.

- Pi*, University of California.....Berkeley, Cal.  
MARGERY COOGAN, 2515 Le Conte Ave., Berkeley, Cal.  
*Beta Eta*, Leland Stanford, Jr., University.....California  
ETHEL WALLACE, Kappa Kappa Gamma Lodge,  
Stanford University, Cal.  
*Beta Pi*, University of Washington.....Seattle, Wash.  
OLIVE POWLES, Kappa Lodge, University Station, Seattle Wash.  
*Secretary of the Inter-Sorority Conference*..MISS JOBELLE HOLCOMBE  
Carnall Hall, Fayetteville, Ark.

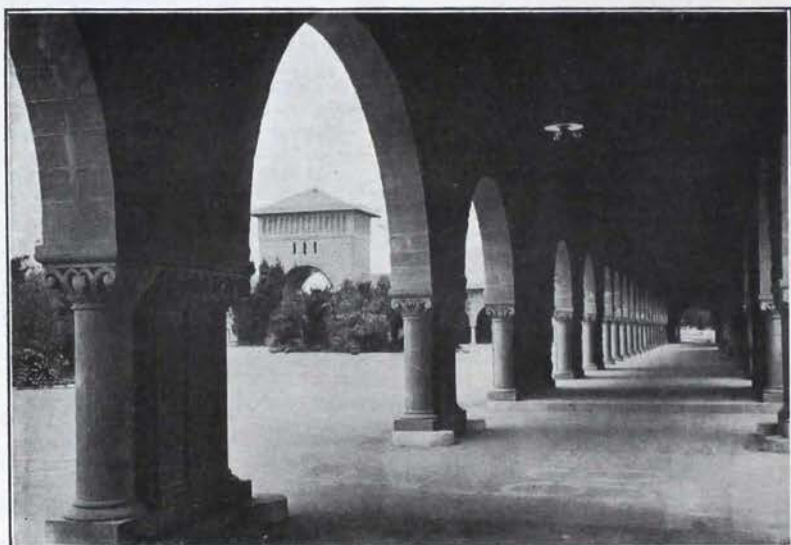
### Alumnae Associations.

- Boston Association*.....MISS ELIZABETH TWOMBLY  
81 Wildwood Road, Winchester, Mass.  
*New York Association*.....MISS KATHERINE S. DOTY  
553 W. 141st St., New York City.  
*Beta Iota Association*.....MISS AGNES SIBBALD  
Fox Chase, Pa.  
*Syracuse Association*.....MISS GRACE WIGHT  
303 Marshall St., Syracuse, N. Y.  
*Philadelphia Association*.....MISS NELLIE A. HELLER  
The Covington, 37th & Chestnut Sts., Philadelphia, Pa.  
*Meadville Association*.....MISS MARGUERITE MCCLINTOCK  
473 Walnut St., Meadville, Pa.  
*Pittsburg Association*.....MRS. C. E. WILBUR  
47 Dawson Ave., Bellevue, Pa.  
*Columbus Association*.....MISS MARY P. FOLLETT  
94 Hoffman Ave., Columbus, Ohio.



### Alumni Associations—continued.

<i>Cleveland Association</i> .....	MRS BERTRAM STEPHENSON 167 Princeton St., Cleveland, Ohio.
<i>Akron Association</i> .....	MISS AMY SAUNDERS 484 Carroll St., Akron, Ohio.
<i>Wooster Association</i> .....	MISS FLORENCE FELGER Wooster, Ohio.
<i>Adrian Association</i> .....	MRS. GUY M. CLAFLIN 19 E. Maple Ave., Adrian, Mich.
<i>Bloomington (Ind.) Association</i> .....	MRS. SANFORD TETER 509 N. Washington St., Bloomington, Ind.
<i>Indianapolis Association</i> .....	MISS ESSIE HUNTER 5651 E. Washington St., Indianapolis, Ind.
<i>Greencastle Association</i> .....	MISS HALLIE LANDES 302 N. College Ave., Greencastle, Ind.
<i>Iota Association</i> .....	MISS MARION WOOD 429 W. Charles St., Muncie, Ind.
<i>Bloomington (Ill.) Association</i> .....	MISS CHARLOTTE CLAY PROBASCO 909 N. Main St., Bloomington, Ill.
<i>Chicago Association</i> .....	MRS. D. D. OTSTOTT 6808 Normal Ave., Chicago, Ill.
<i>Madison Association</i> .....	MISS AGNES T. BOWEN 425 Park St., Madison, Wis.
<i>Milwaukee Association</i> .....	MISS LILA BARTLETT Jefferson St., Milwaukee, Wis.
<i>Iowa City Association</i> .....	MISS HELEN L. COPELAND Box 267, Iowa City, Ia.
<i>St. Louis Association</i> .....	MRS. CHAS. E. WITTER 5262 McPherson Ave., St. Louis, Mo.
<i>Columbia (Mo.) Association</i> .....	MISS CARRY MOUNTJOY 105 Price St., Columbia, Mo.
<i>Minnesota Association</i> .....	MRS. F. G. BLYMEYER 1776 S. Humboldt Ave., Minneapolis, Minn.
<i>Des Moines Association</i> .....	MISS MINNIE L. PRESTON 686 Eighteenth St., Des Moines, Ia.
<i>Lincoln Association</i> .....	MISS MABEL HAYS University of Nebraska, Lincoln, Neb.
<i>Kansas City Association</i> .....	MISS ELLA A. BUSCH 3919 Walnut St., Kansas City, Mo.
<i>Denver Association</i> .....	MISS BLANCHE EMMONS 202 E. Ellsworth St., Denver, Colo.
<i>Texas Association</i> .....	MISS FANNIE WEST HARRIS Henderson, Texas.
<i>New Orleans Association</i> .....	MISS CHARLOTTE PRENTISS 1410 St. Andrew St., New Orleans, La.
<i>Los Angeles Association</i> .....	MISS MARY K. JAMES 236 N. Grand Ave., Los Angeles, Cal.
<i>Pi Association</i> .....	MISS MYRTLE SIMS 2421 Warring St., Berkeley, Cal.
<i>Washington State Association</i> .....	MISS LOUISE NICHOLS 606 Minor Ave., Seattle, Wash.



LELAND STANFORD JR. UNIVERSITY.



# The Key

---

Vol. XXIV.

February, 1907

No. 1.

---

## Stanford Ideals.

*By David Starr Jordan, President of Stanford University,  
California.*

For the broad principles of education all universities stand alike, but each one works out its function in its own fashion. It is this fashion, this turn of method, which sets off one from another, which gives to each its individual character. What this character shall be in any case no one force can determine. Its final course is the resultant of the initial impulse, the ideals it develops, and the resistance offered by its surroundings.

In Stanford University the initial impulse came from the heart and brain of Leland Stanford. The ideals it upholds were his before they were ours. They had been carefully wrought out in his mind before he called like-minded men to his service to carry them into action. These ideals were, however, suggested rather than defined. He wished the University to be free to grow with the coming ages. He would extend no dead hand from the grave to limit its activities. His deed of gift was in favor of education pure and simple.

With such a beginning the University has in its brief life come to stand for certain definite things. We know men not by their common humanity, but by their particular individuality. Men at large have eyes, ears, arms, legs, temptations, affections, and like common qualities. We know and prize our friends not for these, but for the few individual traits which each may have all to himself. So

it is with universities. All universities have books, desks, laboratories, microscopes, teachers, rules and regulations. These make the school, but they do not give to it its character. It is the traits of personality which make the university. It is not its regulative processes, its teaching of grammar, of algebra, of the laws of physics, which wins for the university its place in the affection of its students. It is the spirit of the institution—strong, helpful, rich, earnest, beautiful, or the reverse, which makes the university a real organism.

That Stanford University should have some quality of its own, a distinct individuality, is the aim and the hope of those who have shaped its course. What this character is others must tell. Suffice it to say, Stanford University is just what it claims to be. It has no pompous ceremonies to conceal idle action. It has no place for make-believes, whether pious or worldly. It lets no form conceal or obscure the reality which is the justification for its existence. The toys which amused the boyhood of culture are kept in their proper places, while the self-inflation by which the college man sometimes wishes to distinguish himself receives its compliment of pins.

The institution is in some degree representative of modern ideas of education. The essence of the higher education of today is individualism. Its purpose is to give to each youth that training which will make a man of *him*. Not the training which a century ago would civilize the sons of clergymen and gentlemen, but that which today will civilize the particular boy and make the most of his abilities. To relate college training more closely to life, without at the same time narrowing it and weakening it, is a great problem in education. Much has been said of the danger of over-education. Over-education there cannot be, if training is properly directed. Of misfit education there is already too much, but that sort of teaching which is clearly a misfit should not be called education at all.

In Stanford University, as in the best of the older universities in America, there is no general curriculum or race course over which all must run. The initiative in the choice of studies rests with the individual. His own will



determines the direction of his training, and the further requirements are those deemed necessary to make his choice most effective. The elective system assumes that there is no one course of study best suited for all minds and purposes. The student can arrange his work for himself under proper advice, better than it can be done beforehand by any committee or by any consensus of educational philosophers. It is better for the student that he should make mistakes sometimes, than that he should throughout his course be arbitrarily directed by others.

The elective system is the strongest agency in the training of the will. It is, therefore, a most effective force in moral training. Furthermore, the elective system enables the student to bring himself into contact with the best teachers—with those who have a message for him; those whose lives and works he would in some way relate to his own. And a matter of no small importance is the reflex influence of this upon the teacher. The great teachers of the world have not been the drill masters. The man who works with realities cannot be a martinet. In the elective system the teacher deals with students who have chosen their work for the love of it and for the love of him. Contact with such classes is a constant stimulus and a constant inspiration. No teacher ever did his best on prescribed courses, and the best that is in the teacher it is the student's right to receive.

Again the character of the university depends upon its teachers. A great teacher never fails to leave a great mark on every student with whom he comes in contact. Emerson once wrote to his daughter: "It does not matter much what your studies are. It all lies in who your teacher is." It is not brick and mortar, books and laboratories that make a university. These are the vegetative organs. The spirit is given by its teachers. It is not what is their fame, what their degrees, what have they published, but what can they do? How are they related to the best in human thought and human action? The best teacher, other things being equal, is the one most human. "Our professors" said Agassiz, of his instructors at the University of Munich, "were not only our teachers but our friends. They

were the companions of our walks and our associates in our investigations, every day cheering and stimulating us in our efforts after independent research."

The ultimate end of education is the regulation of human conduct. Its justification is the building up of an enlightened common sense. It is to help make right action possible and prevalent that the university exists. So its final function is the building up of character, and to this end all its means for securing thoroughness, fitness, friendliness and genuineness must be directed, for wisdom and virtue cannot be set off one from another. Wisdom is knowing what to do next. Virtue is in doing it. Sound training of the mind yields wisdom; sound training of the will yields virtue, and where these are the real joys are likely to gather together. Soundness comes from contact with realities. Some methods are more helpful than the actual information. The search for truth is more to us than the truth we win in the searching. Self-direction is more important than innocence. Any fool can be innocent; it takes a wise man to be virtuous.

In the early days of the university a motto chosen by the students was the words of Ulrich Von Hutton: "*Die Luft der Freiheit weht.*" "The winds of freedom are blowing." The scholar cannot breathe in confined air. He must have the whole universe from which to draw his conclusions. He must have the whole atmosphere in which to express his opinions. That the university may have freedom, it must exist for its own purposes alone. It cannot serve ecclesiasticism and be a university. Partisanship and truth cannot get along together. It can acknowledge no master in human form, if it is to be loyal to its highest purposes.

These are some of the things which constitute the secret of life at Palo Alto. But they do not tell it all. Perhaps the whole may never be told. Perhaps each one who enters its gates may take away a little of it. Something of it was disclosed in the spirit of adventure which led the pioneer class of '95 to entrust their education to the wholly untried, but grandly possible. Something of it is seen in the spirit of friendliness and self-sacrifice which



bound us all together in the years of doubt and stress. Much was seen in the loyalty and devotion of the Mother of the University. It is embodied in the beauty and fitness of the Quadrangles themselves, "the first poem written in "California," as Joaquin Miller has put it, this architectural motive of the old Franciscan missions, fitted to the needs of another mission equally hallowed in its purpose. Something too of Stanford University is inseparable from the charm of California itself. The winds of freedom blow over California, the sunshine floods her valleys with light every day of the year, and within her borders life is at its full and nature most glorious. The center of beauty already, California may also be the center of thought and the center of action. That wisdom, and sweetness, and light may have still greater part in the fame of California in the future through the work of Stanford University is likewise a hope and purpose of the people of Palo Alto.



## The Pan-hellenic.

*By Lucy Sprague, Dean of Women, University of California.*

Last summer *The Outlook* took up the discussion of Greek letter fraternities. The opening article, by C. F. Birdseye, which was strongly in favor of such organizations, evoked, so the editors said, a large number of protesting letters. The protests were almost entirely on the ground that fraternities produced cliques and granted unjust and often abused privileges to the few. Even the most ardent fraternity man or woman must acknowledge a certain justice in the criticism. In some colleges undoubtedly, the evils of self-righteous exclusiveness and usurped privileges are slight; in some colleges, as undoubtedly, they are great. But in all colleges where there are fraternities,—and this applies equally to men and women,—there is the tendency to form into sets, and to grant to the members of those sets certain social privileges which as individuals they do not merit. Recognizing this tendency, the women's fraternities have taken steps to guard against it through the national and local Pan-hellenics. And a strong Pan-hellenic, as far as my observation goes, is the most effective way yet devised of checking this tendency. For if the Pan-hellenic does what it should, it should not only govern the fraternities in regard to their internal workings, and so prevent an abuse of their privileges, but also in regard to their relations to the University at large, and so prevent the "clique evil."

The local Pan-hellenic is so reasonable and natural an organization that it seems strange that it has not everywhere become a tremendous influence. A council composed of delegates from the women's fraternities, designed to discuss and test and enforce the fraternity standards recommended by the national Pan-hellenic, should by its very nature be a great power. To begin with, it should be strong because of the women who compose. If fraternity standards and fraternity selection mean anything, the fraternity women should not only be strong individually, but should be fitted for co-operative service. They



are supposedly chosen because of their character, breeding, scholarship and ability. Living together, as they do, in a house run for the fraternity and not for the individual; concerned, as they are, for a unit larger than themselves, these fraternity women should learn the art of public service; and a council composed of representatives from each chapter should be pre-eminently fitted by training and by nature to serve the fraternities it represents and the College or University which fosters them. Then, their houses alone give them a certain command. They are able to meet and to entertain in homes,—a privilege of some consideration. A woman who belongs to no group larger than herself, has no such opportunity unless she happens to have a home and ample means.

But the chief reason for the power of the Pan-hellenic is that common problems should make common interests. That every fraternity woman should be concerned for the good name and good standing of every other fraternity woman seems almost too apparent for discussion. And yet it is not always obvious. Many do not see beyond the horizon of their own chapter; many fail to realize that fraternities must stand or fall together, fail to comprehend that to the outside world and to the college community at large, a fraternity woman is only a fraternity woman and not a Pi Beta Phi or a Kappa Kappa Gamma. If the Pan-hellenic takes itself seriously, it ought to govern the relations of fraternities to one another, it ought to keep up fraternity standards, it ought to solve general fraternity problems. In other words, it ought to be a self-governing body.

Self-government implies organization and "esprit de corps." The fraternities have elaborate individual organization; the Pan-hellenic combines these smaller organizations in one large one. But unless there is the adequate "esprit de corps," the organization can obviously avail nothing. In many Universities the Pan-hellenic is merely nominal,—the letter of the law is kept, but not the spirit. This is a lamentable condition, for it means that sooner or later one of the fraternities will sink below the standard and remain there until it sinks so low that it must be

forcibly raised by outside (University) authority. The Pan-hellenic offers this large opportunity of self-guidance, and I cannot help feeling that fraternities which refuse this opportunity thereby declare themselves narrow and selfish in their interests.

And if the Pan-hellenic does all that it is designed to do, it will do more. By governing itself well, it will help to govern the whole student body, or rather, it will help self-government in the whole student body. For if a considerable portion of the influential students find self-guidance successful, it can not fail to instigate others to the same end. I know some do not consider self-government the proper goal for a student community. And there is something to be said against it. If the aim of the University is primarily to make scholars, as it is in Germany, or primarily to make gentlemen or gentlewomen, as it is in England, then self-government by the students may not be desirable. But if the aim is primarily to make competent workers (and this is the typical American aim), to fit for the practical world which meets the college graduate, then self-government is an admirable teacher. The college world is always a very artificial one; it is an isolated community, with interests, government and politics of its own. The one way to justify this artificiality is to make the college a miniature of the real world, and thereby to train the inhabitants of this make-believe world to become inhabitants of the real world in which they will shortly become real workers. Now, the most important thing in the real world is control,—first, of oneself and secondly, of others. This control can best be gained by the students in their artificial college world through self-government; to my mind, that is the point and meaning of student authority. The responsibility of judging itself sobers and steadies a student body. It teaches the grave meaning of standards, it teaches the great importance of authority and the great importance of obedience. It teaches a man or woman to command and to obey.

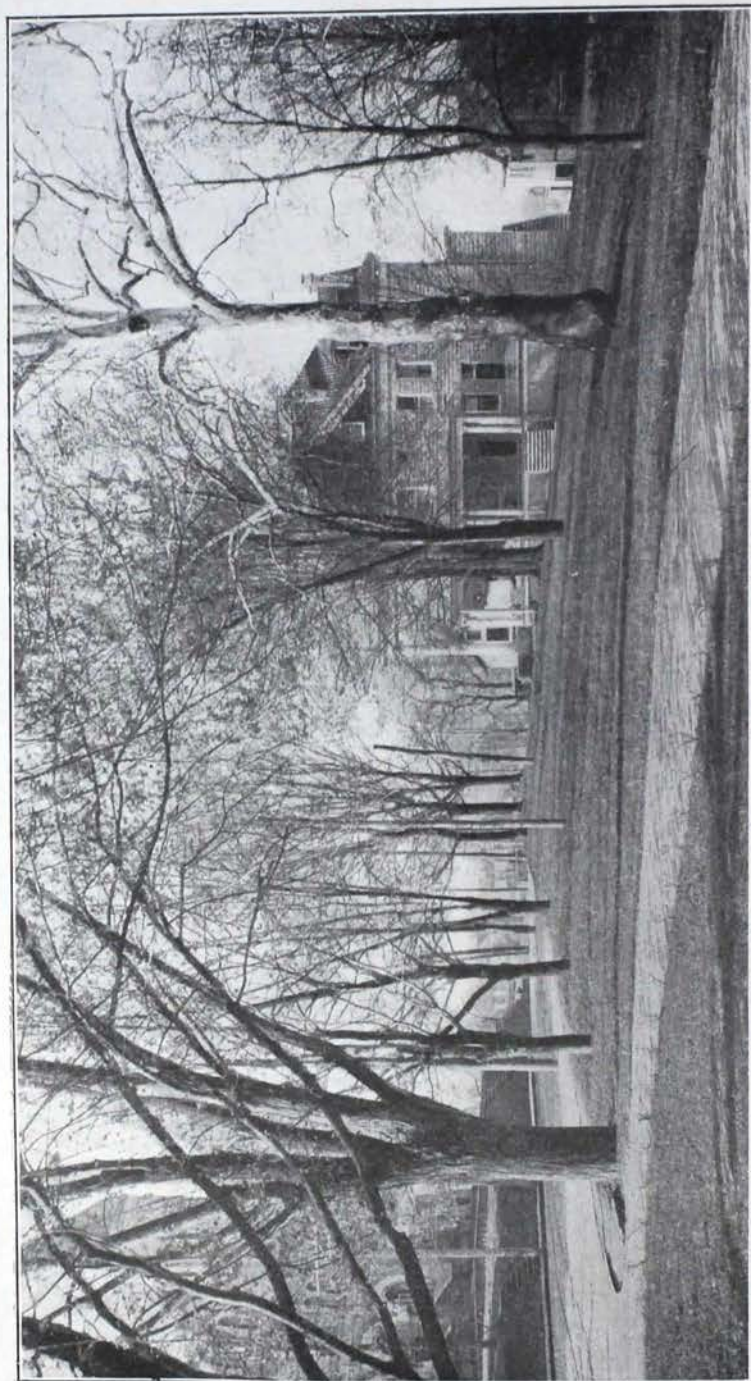
The University authorities,—I speak advisedly,—dislike being set apart from student-government,—dislike being called in as disciplinarians only when student author-



ity fails,—dislike being consulted only after the catastrophe is over. They like to have a share in the forming as well as in the reforming; they like to be an inside and not an outside factor. This applies to Pan-hellenic government as well as to other forms. If the delegates to the Pan-hellenic before their meeting would go to the President or the Dean for suggestions as to suitable problems for discussion, I believe both the fraternities and the University as a whole would benefit largely. The University authorities can do little that is not superficial and arbitrary without student help: the students can do little that is authoritative and vital without University help. Then why not co-operate?

I would merely say in conclusion, that I heartily believe in fraternities if they are reasonably controlled; that I believe the most natural and effective way of gaining that control is through their own Pan-hellenic; and that if the Pan-hellenic succeeds in establishing a wise self-government, it will not only do away with the fraternity evils of exclusiveness and abused privileges, but will also help the entire student body to formulate and enforce its own standards and thereby acquire that greatest of possessions,—self-control.





THE CAMPUS TREE, AND PRESIDENT'S HOUSE—LIBRARY AT THE LEFT.



## West Virginia University.

*By J. M. Callahan, Professor of History at West Virginia University.*

The history of West Virginia University extends back to 1814, when Monongalia Academy was chartered by the commonwealth of Virginia. The institution existed as an Academy until 1867 when it became the property of the newly organized State of West Virginia under the name of the West Virginia Agricultural College. The next year the name was changed to West Virginia University. For many years after Monongalia Academy was converted into the institution with the larger name, its student body was not very large in numbers, and it went through the usual experiences of the early years of most State Universities. It had to outgrow political influences, and to establish itself in the confidence and affections of the people. But during that period, as in all of its history, many noble and scholarly men were connected with its faculty, and the quality of work done has always been of high grade. Up to nine or ten years ago the number of students enrolled during any year had never reached 300; now the enrollment is 1,100, and the patronage comes not only from every county in West Virginia, but from many other states, and a half-dozen foreign countries.

Its control is vested in a non-partisan board of regents appointed by the Governor. The funds for its maintenance are derived from the interest on the original land grant of the United States Government, the Morrill fund, the Hatch fund, biennial legislative appropriations, fees and tuition. The revenues last year were about \$270,000.

The faculty consists of about seventy-five members, professors and assistants, educated in the following Colleges and Universities: Harvard, Princeton, Johns Hopkins, University of Virginia, University of Berlin, Columbia, Cornell, University of Michigan, Indiana University, Yale, Brown University, Tufts College, University of Paris, Ohio State University, University of Grenoble, and other leading institutions of the world. Most of the younger men

of the faculty have the doctorate from some famous University.

The University organization includes the following Schools and Colleges: I. The College of Arts and Sciences; II. The College of Engineering and Mechanic Arts; III. The College of Agriculture; IV. The College of Law; V. The College of Medicine; VI. The School of Music; VII. The Commercial School; VIII. The Preparatory School; IX. The School of Fine Arts; X. The School of Military Science and Tactics; XI. The Summer School.

The greatest development of the University has been during the past ten or twelve years. The attendance for several years past has increased upon an average of nearly one hundred a year. During the past five years the growth in the Colleges (in attendance) has been about seventy-two per cent. It is worthy of note that while this great increase has taken place in the Colleges, there has been an actual falling off of five per cent. in the enrollment of the Preparatory School (a department which the poverty of the State in High Schools has made it necessary for the University to maintain). President Purinton has recently made a study of the growth of American Colleges and Universities during the past five or six years, and says that with the single exception of the University of Illinois, the per cent. of growth at West Virginia University is the largest in the country.

The University is wholly out of politics. No political or sectarian questions are ever asked of candidates for places in the faculty. It has the confidence of the people. The sons and daughters of its foremost citizens are in attendance. Its graduates fill places of importance all over the country.

There has recently been published a history of the graduates of the University from 1867 to 1903. Among the graduates are five college presidents, forty-seven college professors, three state superintendents of schools, ten normal school principals, twenty-five normal school teachers, ten bank cashiers, twelve judges, forty-five preachers, twenty-eight doctors, six United States army officers, one United States Senator, four members of Congress, one gov-



ernor, one attorney general, one state geologist, ten state senators, thirty-five members of the house of delegates, sixty-five engineers (civil, mechanical, mining), forty-three superintendents or principals of high schools and schools of similar grade, sixteen editors, about twenty-five business men and farmers, and something more than two hundred and twenty-five lawyers. This list includes also the first sheriff of Manila, a clerk of the Supreme Court of the state, a clerk of the state senate, a clerk in the house of delegates, a chief mine inspector, a weather bureau director in South America, and the most famous football coach in the United States.

The administrative officer, President Daniel Boardman Purinton, Ph. D., LL. D., is a man in whom all of the people of the state have the utmost confidence. His scholarship, tact, judgment and experience, together with his personal acquaintance with the conditions and needs of the state, fit him to be an ideal President of the chief institution of learning.

The criticism and antagonisms of a quarter of a century ago are over and forgotten, and the University is supported by the friendly forces of a marvelously rich state—a state whose chief pride is in its University. Great things may be expected in the next decade.





A GROUP OF BETA UPSILON GIRLS.



## Installation of Beta Upsilon.

No one could have wished for a more beautiful day than December 22nd, the birthday of our "Christmas baby," Beta Upsilon.

The low-lying Cheat Mountains surrounding Morgantown, West Virginia, were blanketed in white, and snow fell almost all day. The Kappa friends nearly all arrived Friday evening, and were taken from the train to the Phi Kappa Psi House, which the West Virginia Alpha Chapter of the Phi Kappa Psi, had handed over to the Kappa Delta girls for themselves and their visitors during the period of installation.

A number of Kappas were kept away by the nearness of the Christmas holidays, but those who came were warmly welcomed. Those who arrived Friday were Margaret Taggart, Lucy Kinney, Grace Baird, all active Kappas from Beta Gamma, Beta Upsilon's sponsor chapter. With them came Mrs. Virginia Zane Wilbur, Mrs. Christa Yingling Beers, and Ethel Moorhead, all alumnae of Xi Chapter, and in the Pittsburg Alumnae Association. Jessie Byers, Xi, and Altai Floyd, Beta Gamma, had arrived in Morgantown two weeks before, to assist the resident Kappas in their preparation for the infant chapter. The three Kappas whose homes are in Morgantown are Mrs. Ethel Finnicum Moreland, Xi, Adelaide Dovey Church, Psi, Mrs. Leanna Donnelly Brown, Gamma Rho. Marguerite Arnett, Xi, of Fairmont, W. Va., was visiting in Morgantown at the time. So you see we had exactly a dozen loyal Kappas to greet our Grand President when she arrived at noon Saturday.

Miss Griffith was to have been the guest of the resident Kappas, but they were prevailed upon to share the honor with the initiates, so a part of the short visit was spent with them at the Phi Kappa Psi House. Let us say by way of parenthesis here that it was a delight to have Miss Griffith, our Grand President, with us, and Beta Upsilon was especially pleased because Miss Griffith had visited them while their application for a charter was pending. Thus, after having installed them, she is doubly dear to the girls of Beta Upsilon. Indeed we all felt it was a privilege



to have two days of fellowship with Miss Griffith. The festivities of the occasion really began on Friday evening when the Kappa Delta girls received their many friends in an informal way at the Phi Kappa Psi House.

Now let me tell you something of Kappa Deltas in West Virginia University. Seven has been their lucky number since her founding. Kappa Delta was founded seven years ago, with seven charter members, who took for their badge a seven-pointed star. On December the 22nd, the seventh day of the week, they were installed as Beta Upsilon Chapter of Kappa Kappa Gamma, with twelve charter members and two initiates, making twice seven the number of Kappas in West Virginia University. There were twenty-seven Kappas sat at the banquet-table after the initiation, and last, but not least, Beta Sigma, the erst-while baby, presented her little sister with a beautiful seven-branched candlestick.

At half-past three in the afternoon Beta Upsilon Chapter of Kappa Gamma was installed at the home of Ethel Finnicum Moreland, who felt it quite a privilege to open her new home to her new sisters. Every Kappa knows how beautiful our initiation can be made. We all felt that Beta Upsilon's installation was perfect, so you must close your eyes and see it for yourself. After the installation of the twelve charter members Beta Upsilon held her first meeting as a Chapter of the Kappa Kappa Gamma, and used the new gavel presented to her by Beta Gamma. The meeting was followed by the initiation of Mae Sullivan and Gertrude Pollock, and in the twilight Kappa sisters, old and new, talked and sang together for a while and then dispersed to prepare for the banquet at eight o'clock.

The large living-hall of the "James Cochran" House, of the Phi Kappa Psi, presented a beautiful picture to the Kappas who descended the stairs to the banquet-table. The great brick fireplace, with its cheery blaze, was wreathed in holly, and everywhere shone Christmas greens and college and fraternity pennants. The long table down the center of the room was aglow with the lights from red candles in crystal candlesticks. At each plate was a bunch of dark red carnations, the flower of the Kappa Deltas.

The menu cards were shaped like our pledge-pin, on dark blue paper with light blue sigma superimposed. You can imagine the enthusiasm produced from a mixture of Christmas and Kappa spirits. Each Kappa, new and old, thought she had never had such a Christmas gift, and only wished more wearers of the key might share her pleasure.

During the banquet letters and telegrams of greeting were read from most of our chapters and Alumnae Associations, also from several chapters of other fraternities in West Virginia University, and from friends of Beta Upsilon members of Kappa Delta, who finished their college course before Kappa Delta petitioned Kappa Kappa Gamma.

Miss Altai Floyd, Beta Gamma, made a most gracious toastmistress, introducing each speaker with appropriate and significant words. She was presented by Beta Upsilon with a large bunch of carnations, matching in color the roses of her cheeks. The following toasts were responded to:

"The Christmas Baby," Adelaide D. Church, Psi. Response, Margaret Buchanan, Beta Upsilon. "Our Sponsor," Evalyn S. Burns, Beta Upsilon. Response, Margaret Taggart, Beta Gamma. "Kappa Delta," Bertha S. Hawley, Beta Upsilon. "The Ideal Kappa," Virginia Z. Wilbur, Xi. "The Grand President," Ida K. Sutherland, Beta Upsilon. "Fraternity and College Relationship," Mary D. Griffith, Beta Alpha, Grand President. These toasts were ably given and made the tie that bound us closer still. Just as we arose from the table we formed that mystic circle which proved us sisters in very deed, and gave our Kappa call,—some of us for almost the first time, and some of us closing our eyes, witnessed the scenes of years long ago. We lingered about the table from eleven o'clock until midnight singing Kappa songs and new ones written by the baby chapter, to celebrate her birthday. Each one present wrote her name in a guest-book which is to be used by Kappas only. Before we separated, Beta Upsilon gave each of us a pink rose from a large bouquet sent with congratulations by Alpha Xi Delta.

VIRGINIA ZANE WILBUR, Xi.



## The Key

### Parthenon.

#### The Student Government Convention.

For three years the leading Women's Colleges of the east have held conferences to discuss ways and means for student government. The last convention took place at the Woman's College of Baltimore in the fall of 1906 and was truly an event to be remembered. Two delegates were present from each of the following colleges: Barnard, Brown, Bryn Mawr, Cornell, Mt. Holyoke, Randolph-Macon, Simmons, Smith, Swarthmore, Vassar, Wellesley, Wells and Wilson. During the whole conference there was evident a delightful spirit of fellowship and interest which was increased by the charming hospitality of the Woman's College.

After the arrival of the delegates on the evening of Friday, November 16th, the Junior Band of the College gave a concert of operatic and Sousa-esque selections upon pasteboard cornets which was highly appreciated by the audience. On Saturday morning after a delightful automobile spin into the suburbs of Baltimore the delegates returned to a business session to which the members of the Students' Association at the Woman's College were admitted and which consisted of a report given by the President of the Students' Association of each College represented. These reports were very suggestive and helpful and furnished an opportunity for a lively interchange of ideas. In many of the colleges represented, student government has advanced no farther than a control of conduct in the dormitories while in others practically the whole management of all college affairs, not strictly academic, has been placed in the hands of the students. At Barnard, for instance, the Student Council, composed of the five officers of the Undergraduate Association and the four Class Presidents, has almost unrestricted control over the cut system, the honor system, the authorization of new clubs and fraternities, student conduct, scholarship regulations for office or plays and lastly over the fraternities, collectively and individually, where they infringe upon the rights of the college as a whole. It is within the power of the council to eject

any or all of the fraternities, to control their rushing in college by adequate rules and to set the date of pledge-day. Why should not some of our Western Universities who are laboring with the problems of unrestricted rushing and a pledge-day so early as to be injurious to the interests of fraternity members, non-fraternity girls and freshmen try this idea of college regulation? Why should not the students control the fraternity situation in so far as the fraternities infringe upon the right of the student body to democracy and common sense?

The conference continued in the afternoon with a closed session followed by a large dinner in the evening for the delegates and senior hostesses. Sunday was occupied with church in the morning, vesper service in the evening and visits among the delegates. An informal tea was given for the delegates in the afternoon by Tau Kappa Pi, a local at Baltimore.

Of purely Kappa interest is the fact that three of the delegates present were Maude Kemmerer, Beta Iota, Marguerite Newland, Beta Epsilon, and Juliet Points, Beta Epsilon. As four more Kappas were discovered at Baltimore, Miss Stoner, from Indiana, the two Stone sisters from De Pauw, and Cornelia Ellison from Missouri, a little Kappa reunion was held Sunday evening.

The conference closed on Monday morning with an informal business session followed by chapel. We can hardly recommend the idea of such a conference too heartily. If student government is to be one of the characteristic features of the American College in the future, intercollegiate conventions seem to be the best medium for an exchange of ideas on the subject.

JULIET STUART POINTS, *Beta Epsilon*.



**Opposition to Fraternities.** One of the problems which confronts a new chapter of a national fraternity in a new college is anti-fraternity feeling. Whether the fraternity itself is responsible for this condition is a question. Whatever the cause, if such a sentiment exists, chapter introspection is necessary.



## The Key

A secret society, from its very nature is necessarily exclusive. Though it is a part of college life, for this reason it is somewhat different from the rest of the college, and the fact that all can not share the advantages derived from such fraternity may give rise to a certain bitterness or jealousy. If such is the case a change in the point of view of the independents is the only remedy. The fraternity is not the cause of the opposition.

But there is another phase which demands consideration. Does the fraternity exaggerate its right to exclusiveness? Is this secrecy unpleasantly impressed upon the non-member? It is quite possible that this reason, rather than the former, is responsible for the anti-fraternity feeling. If fraternity is evident in the politics or social life of the college, opposition is well merited. Perhaps the chapter does not realize that it is unpleasant for others to enter into unnecessary discussion of fraternity matters; perhaps they are not conscious of the impenetrable barrier with which they have surrounded themselves. But if the chapter feels a dormant or a growing spirit which opposes them, the time is at hand for a change of policy. Such a question can not be settled in a moment. The fraternity knows its own ideals. The college-world does not know them except as they are exemplified in the members of the fraternity. The object of a chapter should be to make others see them as they see themselves.

When fraternities benefit only their members they are not fulfilling their mission. Opposition is but the natural result. The fact that the question—have fraternities a right to live—is constantly arising, shows that there is a fault somewhere. Perhaps the opposition is not noticeable in old universities and colleges where fraternities are a well established custom, but in a new college it is apt to be quite evident. If the fraternity is to fully realize its ideals this feeling must be overcome. Others must see them as they see themselves. If every chapter should accomplish this, fraternities, in addition to being of inestimable value to members, would be a certain and not questioned benefit to non-members.

FLORENCE A. BOOLE, *Beta Sigma.*

## The College Student and Religion.

Religion is one of the strongest instincts of the human mind and, in common with other mental and spiritual faculties, is capable of evolutionary development.

Towards religious standards each has his own inherited attitudes and tendencies,—the ancestral position is strong even to superstition—but as one awakens to the possibilities of his own reasoning and responsibility, the inherited and environmental belief is no longer satisfying, and the thinker begins with fear and great hesitation to seek for an adjustment and reconstruction.

Most strenuous minds have at some time a season of religious doubt, and as the college student passes from the influences of his old traditional life into the larger atmosphere of independent thought, his growth necessitates the leaving behind of some earlier stages of religious conceptions, and beginning an honest analysis of the problems for himself.

A spirit of scientific investigation is a great factor in our modern education, and it is natural and right that an educated man should wish his vital beliefs to stand the search-light of the most advanced thought and science. Then, too, as the mind grows the soul develops, and the conception and philosophy of life and religion must change to fulfil new conditions. If, as we believe, religion is the soul's instinct toward God, the method of following that instinct will surely differ with development and power of interpretation. There can justly be no fixed philosophy, no common creed, no infallible law for us all, nor a beaten pathway along which the soul must travel towards its "desired haven."

At some time in the College life the thinking man or woman reluctantly confronts the fact that the old ideals and beliefs are becoming threadbare and that he must differ with the common religious conceptions of the day. The interpretations of life have changed, the symbols and ceremonies have become hollow, dogma and creed and old tradition fade into the past. He has reached a stage where he must reconstruct his ideas of God and the Bible or lose his faith in them. The student can no longer believe just be-



cause the prophets believed. He conceives God a Power, not a Personality, Heaven as a state, not a place, and the Old Testament as a history, not a law. Nor can he subject his intellect to authority which is not consistent with truth as science finds it. In order to maintain his integrity he can no longer subscribe to the accepted faith of his Fathers.

There is something of infinite pathos about giving up the old beliefs and old ideals, yet pain is the price paid for all progress in life. It is far better that an active effort bring a rejection of many old ideas than that a superstitious passiveness allow the subject to remain at rest, for says Felix Alder: "We dare not give up one iota of what the human mind has won, in order to purchase by a craven compromise with the past, the peace of the lotus-eater."

It is the intellectual responsibility of every person to seek with strenuous mind the truth, and reject from his philosophy all that is false, preserving above all a mental integrity and spiritual energy, "proving all things and holding fast to that which is good." And, should the good be found in a reconstruction of the old philosophy and an entirely new interpretation of religion, or should it be found in a return to and a renewed belief in the old tradition and symbols, still it represents the truth, for it is the product of one's best thought. To change the religious conception is not necessarily to lose one's religion. "Nothing essential is lost. For whether there be a God of the kind that was once believed in, whether or not there be an hereafter, one supreme opportunity remains. You can refuse in this life to be base, you can follow the leadings of what you are sure is your higher nature." For after all religion is not the result of research—philosophy and ethics and science are not all of it—beyond is the soul experience without which there can be no real religion. Goodness and purity and charity are not the products of philosophy, work not faith is the great inspiration of life. Not by the doctrine of Peter or the philosophy of Paul—but by the life and work of Jesus has Christianity come to be a world power. And not the most profound reasoning or the deepest thought can make religion a reality in the student's life. It is after all an experience, an attitude, a response, a communion with the "Power that makes for righteousness."

JOSEPHINE L. REED, *Beta Alpha*.

**To the  
Alumnae.**

There is a surprising lack of freedom in the feeling of the alumnae toward the active chapter. One of the older women said recently: "I do not feel quite free to come to the chapter meetings. I fear that the girls may not really want me,—that I might throw a restraint upon them. Am I right?" I am going to answer her question from the standpoint of the girls of Phi, believing that our sentiments are those of every chapter.

In the first place we need the alumnae. There is great satisfaction in thinking of the splendid women whose aid we may demand. The Alumnae Association may prove a material help in times of financial stress. This is one of the duties of that organization, for there is no one else to bear it. Quite as important is assistance of a less tangible nature. Interest, sympathy and encouragement, are the natural gifts of an alumna to her chapter, and mean more to the recipients than is perhaps realized. There come times when weighty questions are to be decided, and the counsel of some older person is invaluable,—we need your judgment. Have you ever considered how much the friendship of an experienced woman may mean to a college girl? Quite apart from fraternity, the sympathy and advice of a woman who has been through college and known the same interests and difficulties, are a treasure to an undergraduate. Kappa makes such a relation natural. It will form itself if given the opportunity. This means, alumnae, that you must make an effort to really know us.

I have said that we need you. Have I not made it plain that we also want you? Our loyalty is yours, and our love is broad enough to include you, every one. We appreciate the strength and help that has come to us through the faithfulness of some alumnae, but we wish to know and love you all. That you may have a definite opportunity to meet us we have planned regular "Alumnae days." Reserve the last Friday of each month, and let three o'clock find you with us in a Kappa meeting. May chapter and alumnae draw closer together in Kappa service and in Kappa love.

M. LOUISE DYER, *Phi*.



## Editorials.

With the Convention of 1906 THE KEY entered into an inheritance that she well deserves. As we look back over the twenty-four years of her life, her struggle for existence seems, at times, almost pathetic. At her birth in 1882, she, the first magazine published by a women's fraternity, was welcomed with enthusiasm by the Greek-letter world. For several years she was under the capable charge of Miss Minnetta Taylor. But the time came when Miss Taylor felt that she could no longer carry on the work, and then THE KEY, lacking in financial and literary support, was passed around, like an orphan, from one person to another and from chapter to chapter, each returning her to the Grand Council with the statement that she was not wanted. But THE KEY bravely overcame all difficulties and has now received the support that should make it a magazine worthy of our fraternity.

The editor is no longer a changeable officer, elected every two years, thereby obliged to lay down her work just as experience has taught her how it should be carried on, and when her plans are only half developed. She has been made an officer for ten years with the hope that each year will find her a woman of wider experience, and more capable in fraternity and journalistic work.

But the editor is personally responsible for only a small part of the magazine. The material that she secures covers but a few pages. The Parthenon articles, the Chapter letters, and the Alumnae notes are in the hands of the fraternity at large, and it is our earnest desire that these should be strong, helpful and interesting. The chapters are no longer required to send an article for each issue of the magazine. In order to improve the Parthenon department, not to lessen the duties of the chapters, the new regulation was made requiring only one article in each administration, and we ask that unusual care be taken in the selection of a subject and the literary style in which it is presented.

THE KEY is not intended for undergraduates alone, but should be of equal interest to the fraternity alumnae. It

is our purpose to publish strong articles upon educational subjects, subjects in which every college woman should be interested. You, Alumnae, are no longer outsiders called upon merely for advice, you have a voice on one of the most vital questions of fraternity administration. A powerful voice, too, for do not your organizations equal the active chapters in number? The Alumnae Associations are still in a state of transition. It was hardly a dozen years ago that the movement was begun and the rapidity with which it has advanced has astonished even the most sanguine. Mr. Birdseye's article on "The Greek-Letter Fraternity as an Educational Influence," in the July Outlook, suggested the great power for good these organizations might exert in the college world. Some of our associations are already working along the lines suggested by this article, while others claim that conditions prevent them from being more than social clubs. As yet our alumnae system is in its infancy and each association must experiment for itself to learn for what purpose it shall exist. It is of your work and your aims that THE KEY wishes to hear. Through its pages plans should be discussed and suggestions made for the strengthening of our Alumnae Associations. If you have established a scholarship tell us how the money is secured and the benefit it has proved to the recipient, the active chapter and the alumnae. If you are working along social service lines write of that, or if your purpose is simply to exert a quiet influence on some nearby chapter, tell how that is best accomplished.

With the added assistance which THE KEY has received comes also a greater responsibility and it was with a feeling of unworthiness for a position of such trust that the present editor took up the duties of her office. The February issue of THE KEY lacks much that a longer experience might supply, but in reading it remember that the work is new to the editor, and

"Be to its virtues ever kind,  
And to its faults a little blind."





## The Key

In the fairy lore of our childhood days, it was the youngest daughter who was always pictured as the most charming, and so each time Kappa Kappa Gamma opens her arms to receive a new child we feel that never before has she welcomed so fair a daughter.

It is the diversity of our sisterhood that gives it stability and charm. Not long ago we greeted new sisters from the extreme East and the far West and now we have reached into the great South. We hope that the joys of the holiday season may attend our "Christmas baby," Beta Upsilon, throughout her life.



THE KEY greatly appreciates the excellent article which Dr. Jordon has taken time from his pressing duties to prepare for this number. Leland Stanford, Jr., University has won the admiration of all by the courage with which she met her terrible losses by earthquake, and we are glad to hear more of her ideals.

To Miss Lucy Sprague, Dean of women at the University of California, we are also indebted for an article of unusual interest, and one that deals with a subject of vital importance to all fraternity women.



The sympathy of the College world has been with the Chi Psi fraternity in the loss of its four members, who met their death in the burning of the chapter house at Cornell University. Such heroism as these young men showed has been seldom seen and our sympathy is mingled with admiration.



We regret that our Exchange Editor has been suffering with her eyes and on this account was unable to do the work of her department. She found a most efficient substitute, however, in Juliette Hollenbach, Beta Sigma.



### Notice.

The edition of Kappa Symphony cards has been exhausted, so no more orders can be filled.



Chapter

Letters

## Alpha Province.

### Phi Chapter — University of Boston.

Greetings to all the chapters, especially Beta Upsilon.

On the fourteenth of November a mass-meeting of the Pan-hellenic Association was held at our fraternity rooms to discuss the question of Sophomore initiation. Dean Warren very kindly consented to speak. No definite action will be taken until the fraternities have had time to consider the matter in all its aspects, as most of them had not thought seriously of the change before and were not ready to vote upon it. Pending this decision all minor alterations in the rushing rules have been postponed.

Initiation was held November the twenty-fourth at Ellen Stevenson's home in Newton. We are very proud to introduce our five new Kappas: Ethel Ham and Elizabeth Jackson, Sophomores; Gladys Avery, Ruth Baker and Ruth Worden, Freshmen. Besides a large number of our own alumnae we were glad to have with us several from other chapters: Miss Purden, Beta Epsilon; Miss Staples, Beta Epsilon; Miss Stecker, Psi; Miss Knowlton, Pi; Miss Crane, Gamma Rho, and Miss Mosher, Kappa.

We extend a cordial welcome to all new members and wish them a happy and useful Kappa life.

Gamma Delta, the general women's fraternity, expects to have a house ready for occupation by the first of next



## The Key

semester. It is hoped that this will be the beginning of a dormitory system.

Evelyn Fisher '07, has been elected President of the Philomathean Society.

Ethel Ham, '09, was chosen to represent her class on the Beacon Staff and is a member of the Board of Directors. She also has charge of the fraternity news in the paper.

Elizabeth J. Jackson, '09, is President of the Sophomore class.

Ethel Ham is a member of the Historical Club.



GENEVIEVE ELDER.

### Beta Epsilon — Barnard College.

Nathalie Henderson has returned to college after a number of years' absence. She is matriculated with the class of 1908.

We have one room in the temporary dormitory, 521 West 122d Street, for the year. Alice Haskell, '06, and Winifred Barrows, '09, have the adjoining room.

Early in the fall the corner stone for our new dormitory, Brook's Hall, was laid. The building faces the college and is built on the same plan. The four intervening blocks will be leveled off to make our long desired campus.

October 26 we initiated Hilda Wood, '09, who transferred this year from Vassar.

All the eastern colleges under student government convene each year to discuss questions of importance to them. Our delegates this year were both Kappas, Juliet Points, '07, President of the Undergraduate Association, and Marguerite Newland, '08, President of the Junior Class. Barnard was elected Vice-President and Secretary of the larger Association, thus enabling us to send three delegates to the next convention.



HILDA WOOD.

### Beta Sigma — Adelphia College.

Just about once in so often it is a necessary pleasure for a Kappa pen to write on Kappa paper a Kappa news-letter. And there are always certain things that are always said

in the same way, particularly at this time of the year when most important is the introduction of new members. Beta Sigma is very fortunate in having initiated Olga Lafrentz, '08, Marian Cutter, '10, and Eleanor Smith, '10.

The next topic is always "what we are going to do." On January 25, Katherine Jewell Everts will read "The Spanish Gypsy" (George Eliot) in Association Hall for the benefit of the Adelphi Endowment Fund. We have great hopes for our first financial venture.

The unusual thing that appears on the Kappa calendar this month is the installation of our new chapter. To us it recalls a very happy time not long ago when we were Kappa's latest, and for Beta Upsilon we wish all the happiness that has been ours. Kappa has reason to be proud of her youngest.

FLORENCE A. BOOLE.



### **Psi — Cornell University.**

Psi Chapter returned to college in the fall with seven girls in the active chapter, and plunged at once into the rushing season which lasted four weeks; and as the result we are proud to introduce four Freshmen into the Kappa world—Katherine Eaton, President of the Class of 1910; Madeline Renold, Secretary; Caroline Crawford and Sara Burns were initiated on October the twenty-sixth.

We enjoyed a most helpful and delightful visit from our Grand President on November tenth and eleventh. We were delighted to hear from her about the conventions, for our delegate was unable to return to college on account of illness.

Margaret Cuthbert and Agnes Gouinlock who did not re-enter college this fall returned for short visits.

Psi sends wishes for a successful new year to all the chapters and extends her heartiest welcome to Beta Upsilon.

CHARLOTTE BABER.



### **Beta Tau — Syracuse University.**

October 20: At the Syracuse-Colgate football game, a section of the bleachers fell, carrying with it nearly two



## The Key

hundred people, but fortunately few were seriously injured. The game was held at New Star Park, which had been rented for the season.

Rushing has been controlled by Pan-hellenic to a greater extent than usual. Pledge-day will occur after the beginning of the second semester.

Just before the Christmas vacation the Psi Upsilon and Sigma Nu Chapter houses were quarantined for scarlet fever.

December 18: Beta Tau entertained formally at a Christmas dance.

JESSICA DOTY.



### Beta Alpha — University of Pennsylvania.

Since college opened in October one of the largest and best equipped engineering buildings in the country has been dedicated at the University of Pennsylvania, a new Veterinary department is nearing completion and the ground has been broken for another dormitory. We are glad to announce that the University will, in January, open a new course, primarily for teachers, but which admits both men and women for the degree of B. S. This is the first time that women have been eligible for this degree and although, at present, it does not to any great extent affect the regular undergraduates, we hope that this is a step toward great possibilities in the near future.

On November the 24th, Beta Alpha received in honor of our new Grand President. Miss Griffith's friends, the faculty and their wives, the Kappas in or near town and the women of the University were invited to meet her. Those who assisted in receiving were Sarah P. Miller, Grand President's deputy; Miss Mary E. Pennington, a former Grand Treasurer; Mary R. Scattergood, Director of Catalog, and Mrs. A. P. Lingelbach, Delta. The reception was held in Houston Hall, the men's Club House, and was the first time that the Hall had been used by college women and every one voted the result a great success. Among the Kappas present were Miss Amy Otis, Psi, Miss Lois Otis, Psi, and a charter member of Beta Alpha, several active and alumnae Beta Iota girls.

On December 14th, we pledged the following girls: Catherine Beekley, Anna D. Bramble, Dorothy Keeney, Kate Nowlin, Mabel Purdy and Helen Rockwell.

SALLY MARK BARCLAY.



## Beta Iota — Swarthmore College.

After our summer vacation we returned to college, September 20th, ready for the year's work. We found Miss Meeter, our new Dean, there to welcome us, who has proved congenial in our work as well as in our pleasures.

On September 27th, President and Mrs. Swain gave a reception to the college in honor of Miss Meteer and our new Professor of Mathematics and his wife, Dr. and Mrs. Miller, from Indiana.

October 13th the chapter held an Autumn Feed at the home of Alda Hill Preston, at Wissahickon. The active chapter and ten freshmen were there.

November 14: Card party was given to the alumnae, actives, and several freshmen at the home of one of the Alumnae, Lucretia Blankenburg, Philadelphia.

November 23: An informal dance given by the active chapter at Lansdowne, to which a few freshmen and some of the college boys were invited. All these functions were greatly enjoyed.

December 5: Our Grand President, Miss Mary D. Griffith, and her Deputy, Miss Sarah P. Miller, visited us which we appreciated very much.

Our rushing season was much shorter than usual this year; and we found all the rules much more satisfactory. Pledge-day was December 15th and our number was increased by eight, on December 19th, when we held initiation. We were very happy to have Miss Griffith with us upon this occasion.

Best wishes for a happy and successful new year!

SUSANNE YARDLEY WILLETS.





## The Key

### Gamma Rho — Allegheny College.

September 21st found ten Gamma Rho girls back in college ready for another year's work.

Our Pan-hellenic contract called for a four weeks' rushing season with entertainments limited to one afternoon and one evening function and as a result we have three new Kappas to introduce, Bernice Hatch, of Union City, Pa., Marie Gaston and Leone McLeane, of Meadville.

CARRIE L. SOWASH.



### Beta Province.

#### Lambda — Buchtel College.

Lambda wishes to introduce her new initiates, Martha Ford, Helen Harter, Ruby Rentscheller, and Jessie Lowry. They were the only girls who were asked by us.

Our first rushing was at an afternoon party held at the home of Mrs. Lyman. The second was a house-party of two days at the summer cottage of one of our girls. The third was an evening party given by the alumnae at the home of Mrs. Kolbe. The fourth was an afternoon card party followed by a dinner at the home of Ruth Hotchkiss.

The girls of Buchtel have formed a "Woman's League," and in November we had a fair to increase our Science Hall fund. The girls worked together and did not allow fraternity prejudices to enter in any way. It is a grand success and we cleared over four hundred dollars.

FANNIE LOOMIS.



#### Beta Gamma — Wooster University.

Beta Gamma is glad to introduce eight new girls to the Kappa world. Martha Taggart, '09, Ruth Frederick, Eleanor Douglass, Helen Moore, Phoebe Ferris, Miriam Hard, Faye Waite, Helen Lawrence, '10, and one pledge, Mary Compton, '10.

The term just past has been a very happy one for the chapter. We were glad to entertain Nell Malloy, of Beta

Nu, and Florence Boole, of Beta Sigma. Anna Carroll, ex '09, was also at the Kappa House for a few days.

The local chapter of Kappa Alpha Theta was entertained informally shortly after pledge-day. A little later in the term our new girls were introduced at an evening reception for the men's fraternities of the university. The patronesses of Beta Gamma entertained the chapter and friends at an elegantly appointed dinner party at the home of Mrs. Jacob Frick.

A special interest in the new chapter at Morgantown has been given us by the presence of Margaret Taggart, Lucy Kinney and Grace Baird at its installation on December twenty-second.

The inspiration and help of the convention has meant much to us, as a chapter and as individuals, in showing us what Kappa means and we wish the best for every chapter and every Kappa.

EDITH E. REESE.



### **Beta Nu—Ohio State University.**

Beta Nu initiated the following girls on October twentieth: Ella Sullivan, Clara Newlove, Nellie Parker and Mary Sheldon.

Kappa Alpha Theta and Kappa Kappa Gamma entertained together with an informal dance.

Miss Shurman, Beta Xi, now attending Vassar, has been a guest in Columbus.

IMOGENE MCCLEES.



### **Beta Delta—University of Michigan.**

On Saturday, October 13, Beta Delta initiated nine Freshmen: Adele Lofland, Lucile Carter, Mable Townley, Ruth Anderson, Betty Ince, Florence Allen, Grace Winans, Edith Taylor and Blanche Martin. Several of the Detroit alumnae were present: Lucy Elliot, Lisa Sundstrom, Bertha Barney, Blanche Barney, Mildred Hinsdale, and Belle Donaldson; Mable Reid and Anna Broomhall, last year's Seniors and Kitty Avery, from Port Huron.



## The Key

A few weeks later at the time of the Illinois game we had with us some of our old girls, Mabel Allen, Ethel Trask, Frederika Hine and Persis Martin.

Plans are being made for the Michigan Union banquet which will take place in the near future. At that time a painting of President Angel will be presented to the University which will hang in the Michigan Club House when it is built.

A number of girls from Pi Chapter visited us within the past month. Mrs. Graupner, Miss Eleanor Bennet and Miss Varina Morrow.

Sally Smart has been elected historian of the Senior Class.

CORWINE SUTHERLAND.



### Xi—Adrian College.

College opened September 19th, and according to contract, no "rushing" was done for ten days.

On September 29th a Pan-hellenic reception was held in South Hall for all the new girls.

On October 9th the alumnae and active chapter with their "rushees," were entertained at a six o'clock dinner at the home of Mrs. E. T. Morden.

October 13th we pledged Edwinea Windrem, Lucy Jennings and Vera Swift.

OLIVE NEER.



### Kappa—Hillsdale College

A happy, happy New Year  
To every K. K. G.  
And may their joys be countless  
As the sands beside the sea!

The fall has been a very quiet one. No rushing! We have pledged four girls: Mabel and Gertrude Mauck, Merle McIntosh and Beryl MacDonald.

All of the girls who were in town spent a part of the Christmas holidays at a delightful house-party at the country home of Bertha Van Aken.

Maude Terwilliger visited in Gobleville, Michigan, during vacation.

Ruth Gurney and Ruth Mauck took part in "The Rivals," which was given at the college in December by two of the college Literary Societies.

MAUDE TERWILLIGER.



## **Gamma Province.**

### **Delta—Indiana State University.**

Delta began the year with eighteen girls. After a short, but strenuous period of rushing,—according to the one-day contract,—eight girls were pledged. They were: Carrie MaKey, Ruth Steele, Kate Laughlin, Esther Firebaugh, Vera Gregory, Ellen Foley, Hazel Pickens, Clara Pfimmer, Cornelia Keyes, who was with Mu last year, has affiliated.

Warda Stevens, one of our last year's girls, was married November 1st to Charles Stout, of Paoli, Ind.

Ethel Simmons, '06, is teaching in Argos, Ind.

Grace Norwood, '06, is spending the winter in New York.

Lila Burnett, '06, is teaching in Peoria, Ill.

Two of the '06 girls have married—Elva Reeves to Tom Elrod, of Columbia, Ind., and Ruby Bollenbacher to Caryl Beck, of Indianapolis, Ind.

As the prospects for the University are bright, so is the outlook for Delta Chapter. Delta sends greetings to her sister chapters.

EDITH HALLOWAY.



### **Iota—De Pauw University.**

October 29: Iota entertained with a progressive dinner for the new girls. Four courses were served, each course at a different house, carrying out a pretty color scheme, and followed by some means of entertainment. At the last course, which was served at the Chapter House the men were invited.

This year we are managing our own Chapter House. We own all our furniture, part of which was donated by the alumnae. One of the girls is general manager and the



## The Key

wheels of the household are well oiled and run very smoothly.

This year the rushing is very different from what it has ever been before. Pledge-day is February 2, 1907, and previous to this time each sorority is allowed to give one formal and two informal receptions. We are allowed to have but two dates a week with each rushee and are honor bound not to talk of fraternity matters while with a new girl.

December 10: We gave one of our informal parties for the new girls. This was a Christmas party and was a great success.

MARTHA POUCHER.



### Mu—Butler College.

Butler College has safely passed a critical point in her career; for this Fall marks the close of the wavering of an essential endowment fund. And once again the prediction for our alma mater's future are the brightest. A few changes have taken place in our faculty: Ex-President Butler has been re-elected and three new professors occupy the chairs held by those who responded to other calls. At present the attention of the student body is turned toward the ever absorbing topic, basket-ball; and intercollegiate and fraternity games hold sway.

And now for news of Mu! Of the seventeen girls who were active last spring, two graduated, three left for other colleges, and four are teaching school. So the remaining eight necessarily redoubled their energy and enthusiasm. Mu decided to dispense with much of the strenuousness and distraction of spiking season by confining herself to individual rushing. This she found to be fairer to all concerned, and also very successful. It was on Kappa Kappa Gamma's thirty-sixth birthday that the Chapter presented her with the "Big Four," namely Nita Cole, Margarite Watson, Edna Wink and Bernice Sinclaire, all strong, true blue Kappas. Mock Initiation, preceded by our annual delicious chicken dinner took place on Halloween at the home of Edna Huggins. Here it was that our Freshmen again realized the strength of Kappa! The next point of interest to Mu was

the election of senior officers—history repeats itself, and so again Kappa claims the presidency and two other offices.

As a result of Miss Griffith's efforts a Woman's League has been organized at Butler and a college room granted it. The purpose of this organization was fully stated in the April KEY. The first meeting proved to be most successful. It consisted of a vaudeville—little did we dream that there was so much latent dramatic ability in our college girls! The Kappas present, who attended convention were strongly reminded of "Stunt Night." Already the League has brought about a more friendly feeling between the girls.

On November the fourth, Sigma Delta Theta, a local sorority of two year's existence, was installed by Kappa Alpha Theta. In the wearers of the black and gold a worthy rival is recognized. A banquet on November the nineteenth was given by Pi Beta Phi and Kappa Kappa Gamma at the Columbia Club, in honor of the new Greeks.

For all Kappas, Mu wishes a happy and victorious New Year.

ELIZABETH N. BRAYTON.



### **Eta — University of Wisconsin.**

Eta started in the college year enthusiastically after the inspiration of convention. Now the chapter letters have an added interest, as we feel we know all the girls personally.

The upper-classmen felt very young and inexperienced this year without the prop of last year's Seniors, but everything has been very successful. Bess Morrison, Minneline Riess, Meta Starke, Florence De Lap, Nell Parkens and Alma Peterson have been with us from time to time to cheer us on our way.

This Fall in rushing we did not enter into much competition and were all through early in the first week. We have eight freshmen, three of whom were pledged when they came down—Agnes Challoner, Mabel Fitzgerald, Alice Currie, Hope Munson,, Fanny Carter, Helen Stephens, Eugenia Brandt and Clara Terry.

Three of the girls did not return, Helen and Louise Cutter and Lillian Adams; and Helen Stephens were taken



quite seriously ill and went home; but we are glad to have Edna Terry, of Upsilon, with us, and Helen Munson, who stayed out a year, so we are not lacking in numbers. Next semester we expect Harriet Harding, who has been traveling in Europe, and Genoise Browne, a girl we pledged last Interscholastic.

We gave a formal dance to introduce the freshmen, and have had a number of "stunts" in the house. Halloween we had a "baby" party and saw all the girls as they used to look. Last Wednesday we gave the first of a series of "at homes" to the university girls.

The Eta girls have been enjoying a week's visit from Jessie Corse, of Racine, a last year's senior. Bess Morrison, of Dixon, Ill., also spent a couple of days with us the first week in December.

Jessie Mead, one of our pledges from Plymouth, Wis., came down to spend the last five days before the Christmas recess.

On November sixteenth the Wisconsin Chapter of Delta Upsilon opened its new lodge with a formal reception, both afternoon and evening, at which four of the Eta girls assisted.

December seventh was "College Day" at the "Pal." Girls from the different sororities served, and 20 per cent of the day's profits were given to the S. G. A., to help furnish the new Women's Building. In the afternoon there was a matinee dance for the girls, the proceeds of which also went to the S. G. A. for the same purpose.

Wednesday, December nineteenth, the girls held their annual Christmas tree celebration, the last gathering before the Christmas recess.

HELEN FAY.



### **Beta Lambda — University of Illinois.**

The college year opened very encouragingly for Beta Lambda, having fourteen active girls.

We had a very successful rushing season and we wish to introduce our new freshmen, Helen Milligan, Margaret Pouk, Margaret Herdman, Elizabeth Cass, Mary Moore, Elizabeth Parr, Bertha Schwarzkopf and Helen Thurston.

We also have two pledges, Gertrude Davis, who will be back in college next semester, and Helen James.

The Y. W. C. A. Convention was held at Champaign the first week of November, and was a very successful meeting, for about three hundred girls from both the city and college associations were present.

Our initiation was held November 3rd, and on account of the convention we had one girl from Upsilon and six girls from Epsilon at the house. Jessie Barnard, from Beta Eta, was visiting at the time, and at the banquet seven chapters of Kappa Kappa Gamma were represented, among the fifty persons present.

We held a reception on November 24th to the faculty, townsfolk and students. Over five hundred invitations were sent out.

Beta Lambda sends greetings to all the other chapters.

ANNEBELL FRASER.



### **Upsilon — Northwestern University.**

Upsilon has ten freshmen to introduce in the fold of Kappa Kappa Gamma, Emma Jones, Margaret Clark, Elsie Wyath, Edith Foster, Luella Gordich, Clara Harris, Margaret Hull, Loreen Leary, Mary King, Lelia Potter.

On October 16th, the freshmen entertained us with a beach party.

We entertained November 10th with an informal dance.

Initiation was held November 16th, 1906, followed by a banquet. Many of our alumnae were present with us.

We greatly miss Elizabeth Shepherdson, who was compelled to return to her home in Minneapolis, early in November.

Alice Bunker announces her engagement to Mr. Jack Romans, ΦΔΦ.

College closed December 20th for a two weeks' vacation.

About fifteen Northwestern girls lunched with the Beta Lambda girls November 17th at Marshall Field's.



## The Key

Miss Myrtle Strickler and Miss Hazel Schnable, who are teaching at Belvidere, Ill., have visited us several times.

HELEN TANQUARY.



### Epsilon—Illinois Wesleyan University.

To all sister chapters and members of Kappa Kappa Gamma, Epsilon sends greetings for a Happy New Year.

Since school began in September what an amount has been accomplished! The first few weeks Epsilon spent in rushing and getting acquainted with new girls. As we have little opposition, we do not have such strenuous rushing as some of our sister chapters.

October 6th we pledged six new girls, Ruth Green, Elsie Welch, Louise Barnes, Bernice Green, Lola Yerkes, and Mae Stover. Soon after the active chapter and pledges were charmingly entertained by Etta Roe. The impromptu play which was given by the pledges was especially enjoyed.

November 10th, mock initiation was held at the home of Irene Seibel and the active girls had a whole afternoon and evening's fun at the expense of the pledges. We had a real initiation November 17th at the home of Etta Roe. In the evening a banquet was served at the Illinois. There were fifty-five active and alumnae Kappas present, several being members from other chapters. The evening passed quickly and pleasantly in listening to the toasts of reminiscences of the alumnae.

December 13th, the active chapter greatly enjoyed a tea given at the home of Bernice Green.

Epsilon has taken steps toward forming a local Panhellenic at the Wesleyan and wishes to obtain a late pledge day if possible.

The Wesleyan has had a very prosperous year and a large increase in attendance. President Barnes has just returned from a trip to New Mexico where he had gone for his health and so an even more profitable term is hoped for on account of his return.

Epsilon takes pleasure in introducing to you a new pledge, Bernardine Brand.

Julia Holder, '05, who has been attending Smith College, is home for the holidays. Hazel Funk, who has been attending school in the East, was home for the holidays.

On December 19, occurred the marriage of Miss Elizabeth Welty, to Mr. Louis Foreman. After a wedding tour to Mexico they will reside in Bloomington, Ill.

On October 24 was held the wedding of Miss Clara DeMotte and Mr. Charles Munce. Their home is near Lake Fork, Ill.

Alice Parker.



## Delta Province.

### Chi — University of Minnesota.

On October 12, Chi initiated seventeen girls: June Dickey, Kate Fairchild, Edith Gunn, Caro Chamberlain, Elizabeth Ware, Martha Washburn, Alice Tillotson, Clare Ferguson, Helen Brown, Mercy Bowen, Ella Clapp, Ruth Nichols, Elizabeth Bullard, Kathryn Bruchholz, Marjorie Roberts, Louise Strong and Florence Hardick.

The old girls entertained the freshmen at an informal dance, and the freshmen gave a Hallowe'en supper for the chapter, after which there was a shower for the rooms of various useful articles.

December 6, Alice Shevlin Hall, the new Women's Building of the University, was dedicated.

December 19, the Woman's League gave a reception in Shevlin Hall in honor of Maria L. Sanford's seventieth birthday. Prof. Sanford is one of the oldest members of the faculty and is highly esteemed by all friends of the University.

December 28 we gave an informal holiday dance.

On New Year's Day Chi entertained at a large reception at the home of Ethel Simmons. Those to whom cards were sent were the parents of the active girls, members of the faculty whom any of us know personally, all fraternity girls of the University, and about two hundred men.

Caro Chamberlain.



## The Key

### Beta Zeta — Iowa State University.

Beta Zeta began work this year with thirteen girls. Pan-hellenic rules were more stringent than ever before. At the end of "rushing season," we pledged Leta Towner, Mary Helen Letts, Helen Seerley, Ora Cook and Caroline Mabry. With true Kappa enthusiasm they entertained the active chapter at a backwards party just before their initiation, which was October 20.

The following week our Alumnae gave an original opera which was truly full of "local color."

The D. A. R. convention, held in October, brought back to us several Kappas, one from our first chapter.

Among our Alumnae back for the Ames-Iowa game were Alice Clapp, Mrs. Bert Clapp (Eleanor Hays), Mrs. Hoyt Elbert (Ethel Swire), Fan Lilly and Grace Padmore. After the game a spread was given at the Kappa house.

At present preparations are happily being made for a Kappa Christmas tree. This will be our last night together before the holiday vacation.

Every Thursday night has found Beta Zeta girls together, enjoying an informal supper spread and singing Kappa songs.

Beta Zeta sends every good wish to Kappas, one and all.

CAROLINE DRAKE MABRY.



### Theta — University of Missouri.

Our new initiates are: Mary Logan, Katherine Wolfe, Margaretta Wilson, Rachel Van Dyke, Donna Sisson, Edna Williams, Mary Isbell, Caroline Jesse, Clara Thompson, Elizabeth Thomas, Adele Flemming, Sidney Yantis and Elizabeth Patterson. We are in the same house that we were in last year, with fourteen of our old girls back. Grace Parker, one of our juniors, left school the first of November on account of sickness, but she expects to return the second semester.

October 13, forty were present at our annual banquet, both alumnae and active. Mrs. Minnie Russell Thomas, of Mexico, made us a short visit at that time.

October 20, Quadrangle Club presented "Jane," which was quite a success. They are now working on "Brown of Harvard." During October, Marshall Darrach gave a series of readings from Shakespeare. This is Mr. Darrach's second appearance in Columbia. He comes here under the auspices of the Young Women's Christian Association.

November 3, girls' annual Hallowe'en party took place. This year we gave an "Old Settlers' Re-union," and the Kappas had the part of the "Open Air Vaudeville."

November 28, eight of our girls went to Kansas City to the banquet which was given by the Kansas City alumnae to Omega and Theta. It was given in the Italian room of the Baltimore Hotel.

JACK WITHERS.



### **Sigma — Nebraska State University.**

Sigma is proud to introduce six new members: Verna Jouvenat of Lincoln, Nell Givens of Seward, Helen Sholes of Omaha, Orpha Nesbitt of Pawnee, Marie Duggan of Sioux City, Ia., and Florence Riddell of Strawberry Point, Ia.

The new chapter house, the prettiest and most comfortable that the chapter ever had, is located at 631 South Seventeenth Street. The practice of serving meals in the house has been begun. Among the gifts of new furniture should be mentioned a large rug, from some of the alumnae, a dining room table of weathered oak, from the sophomores of the chapter, and a set of weathered oak chairs for the dining room, from the freshmen. The house chaperone is Miss Emma Kennard. Eight girls live in the house, and several more take their meals there.

Rushing was limited this year for the girls' fraternities to matriculation week, then discontinued until after the mid-semester examinations. By an unwritten law, no girl was pledged who was on the mid-semester delinquent list. Among the mens' fraternities there could be no pledging until after the mid-semester examinations, and even then no delinquent student could be pledged.

Five Kappas from Omega chapter were the guests of Sigma at the time of the Kansas-Nebraska foot ball game.



## The Key

The new Temple building, given by John D. Rockefeller, will be completed, it is hoped, this year. It is now well under way. The new museum building is now almost ready for occupancy.

EVA CASEY.



### Omega — Kansas State University.

Omega held initiation Monday evening, December 17th, and wishes to introduce to Kappa Kappa Gamma three new sisters, Evelyn Bennett of Seneca, Lillian Dreibelblis of Sabetha, and Edith Earl of Newton, all freshmen. After the initiation the freshmen gave their annual kettle-drum. This year the older girls were invited to a "masked ballet ball," given by the "fresh bunch," and such a jolly time as we had.

The Masque Club of the Dramatic Association of the University gave its annual performance at the opera house December 13th and 14th, presenting "David Garrick" with "His Wife's Bonnett" as a curtain-raiser.

Our girls spent one of the most enjoyable times of the year at Lincoln, Neb., visiting Sigma, on November 17th, when the K. U. foot ball team played the Lincoln team.

Kansas chapter of Alpha Tau Omega entertained with an anniversary dance November 22nd. The annual party of the law class of the University, in honor of the foot ball team, was given December 19th at the Fraternal Aid Hall.

Omega wishes all the sisters a happy and prosperous New Year.

AMY MERSTETTER.



### Epsilon Province.

#### Beta Xi — University of Texas.

Carrie Bonner Gardener has announced her engagement to Mr. Roy Sewell, Kappa Alpha, of Palestine, Texas.

Several of Beta Xi's members were enabled to come in contact with other chapters this summer. Eleanor Brackenridge visited Pi and Beta Eta, and Helen Knox came back from Colorado with glowing reports of the Beta Mu girls.

Born, to Mrs. Budley Fisher, nee Lucile Wathen, a boy.

A number of Beta Xi's Alumnae are expected for the Thanksgiving festivities. Minnie Sanborn, '08, and Carrie Gardener are already with us.

ANNE GARRETT STRATTON.



### **Beta Omicron — Tulane University.**

As the all important topic this term in every chapter is "the freshmen," Beta Omicron wishes to greet all Kappa freshmen with the heartiest of welcome.

At last the time has come when through the pages of THE KEY we can, with great pride and pleasure, introduce to the fraternity world our eight happy and already loyal freshmen, Clifford Drake, Marion Monroe, Elizabeth Ficklen, Maude Flower, Katherine Newton, Florence Crouse, Kate Nott and Lucille Gillis.

By Pan-hellenic our pledge day was set for the third week after registration, making this rushing season shorter than last—for which we are truly thankful. On November 26th, our initiation was held and an added pleasure fell to Beta Omicron in having in our midst Bennie Brown, Beta Xi.

During November Pan-hellenic entertained with two receptions to welcome the new fraternities that have just been installed at Newcomb, Phi Mu and Alpha Delta Phi.

Beta Omicron hopes that each chapter's rushing season has been as gloriously successful as her own. And to our new officers we send every good wish for the incoming year.

Kitty Monroe, '03, is taking post-graduate course at Tulane University.

Mel Robertson, '05, has accepted a position as teacher in Clinton, Louisiana.

Hazel Ellis left in October to visit friends in the North, where she will remain until after the Christmas holidays.

Adele Ford has returned from an extended trip through the East.



Beta Omicron takes great pleasure in introducing her three debutantes, Gertrude Monroe, Ruth Bush and Janet Ford.

KATHERINE BEVERLEY LEACH.



## Zeta Province.

### Pi — University of California.

Of course, the most interesting and most important event of the term, to the Kappas at least, is our initiation; or, I should say, initiations, as we have had two this term.

The first one took place on the fifteenth of September, when we initiated five happy freshmen: Gladys Buchanan, Katherine Griffith, Margaret Griffith, Mariana Mathews and Genevieve Pratt. Then, on October the 20th, Lee Breckinridge also became a member of Pi.

We were fortunate in having with us at the initiation several representatives of other chapters, among whom was Miss Cleora Wheeler, Chi, ex-Grand Registrar.

On September the 26th, Gladys Meyer, '06, was married to Mr. Eugene Russell Hallett, Delta Upsilon, '05, and on the same day Leilia Graves, '05, married Dr. Eugene McCormack, of the Department of American History at this University. Both Mrs. Hallett and Mrs. McCormack will make their homes in Berkeley.

The great musical events of the University are the Symphony concerts which are given every two weeks by the University Orchestra, composed of seventy-five skilled musicians, under the direction of Dr. J. Fred Wolle. These concerts are given in the Greek Theater and they are a great treat to all the music-lovers around the bay. A great number of students attend these concerts, which are helping to make California famous.

Here is a custom of Pi's which might interest the other chapters: On alternate Wednesday nights, we have either what we call a "Faculty" dinner, or a "Mother's" dinner. Then is the time when our professors and their wives (from four to six at a time), assemble around our festive board and spend an informal evening with us; or, when our proud

parents come to see the Kappa House and to make the acquaintance of Pi, if they have not already done so.

We introduced our freshmen to the general college public at a tea given on the 7th of November. Several of the faculty ladies helped us to receive, together with some of our alumnae. Altogether we considered the tea a great success.

We hope that the other Kappa chapters have spent as pleasant and as profitable a term as Pi has.

With best Christmas and New Year greetings to you all.

LOUISE LAKE MENEFEE.



### **Beta Pi—University of Washington.**

October 15 closed a successful rushing season for this chapter as we pledged six new girls, five of whom have since been initiated. Besides these, we initiated two of last year's pledges and two Alpha Kappa Gammas, Zilpha Fenton, who has resumed her studies, and Mabel Chilberg, of '05 class of Vassar, who is carrying advanced reference work.

The regular initiation banquet was well attended and we were glad to welcome several alumnae from Seattle and adjoining towns.

Helen Taggart, of Iota, was affiliated with this chapter last Fall, but has recently gone to her home near Chicago.

Betty Gamble, '10, has been called home because of the illness of her father.

Helen Starr, '09, is attending Stanford this year, but is expected back at the University of Washington next year.

Mabel Chilberg is instructor of mathematics at the Franklin High School.

Jessamine Garrett is teaching French at the Broadway High School.

FANCHON BORIE.





## Alumnae Association Letters.

## Boston.

The Boston Alumnae Association sends Kappa greetings to all Kappas, and best wishes for the New Year.

As yet our association has been unable to find any one to serve as president or vice-president, but after Christmas we hope to have a new lease of life and hold meetings every month as usual.

The active chapter has invited the alumnae to meet them at the fraternity rooms the last Friday of every month. Many of us shall be very glad to avail ourselves of this opportunity to become better acquainted with the active girls.

Married—Elizabeth Palmer, Phi, 1900, to Mr. Frank J. Carney of Cambridge, Mass.

Married—Ethel Sparrow, Phi, 1901, to Mr. Shaw of Somerville, Mass.

Married—Elsie Tucker, Phi, 1904, to Mr. Herbert Kennoy, of Newton, Mass.

Married—Minnie Stewart, Phi, 1902, to Mr. Gillett of Harvard.



## New York.

The New York Alumnae Association has begun the year most auspiciously. The plan of having an informal luncheon precede the business meeting is very successful. The hostess has a committee of about ten assistants. The October meeting was held at the home of Mrs. Lerria Tarbell-Scarritt, Iota, '84, East Orange, N. J. Although it was a rainy day, there was a good attendance and quite a number of new faces.

The November meeting was with Mrs. Virginia Gillespy, Viskinski, Beta Iota, '99, No. 2806 Pond Place, N. Y.

The January meeting will be January 19th with Mrs. Minnie Royse Walker, Iota, '90, No. 504 W. 112th Street.

Miss Katherine S. Dotey, Beta Epsilon, '04, is in charge of the annual luncheon. This will be February 16th at Bretton Hall, 86th Street and Broadway.

The March meeting will be held March 16th with Mrs. E. Jean Nelson Penfield, Iota, '93, St. Owen's Place, Wakefield. This luncheon will be followed by a musicale.

The last meeting of the year will be April 20th with Miss Katherine S. Dotey, Beta Epsilon, '04, No. 553 W. 41st Street.

All Kappas coming to New York, whether as post-graduates, teachers, visitors or making permanent homes, are urged to communicate with our secretary, and are assured a most cordial welcome.



### **Pittsburg.**

Mrs. Alice M. Hartwell is now located in Detroit, Mich.

The following have lately become members of Pittsburg Alumnae Association: Miss Delma Bard, Gamma Rho, Sheradenville, Pa.; Miss Inez Johnson, Gamma Rho, Butler, Pa.; Miss Helen Mealy, Beta Gamma, Bridgeville, Pa.; Mrs. Lora Perry Hays, Xi, New Castle, Pa.; Miss Lois Axtell, Beta Gamma, Homestead, Pa.; Mrs. Arthur McKain, Gamma Rho, Beaver Falls, Pa.

Miss Adelaide Lochart married Mr. L. F. McKeever. She is now living in East End, Pittsburg, Pa.

The following members of the Pittsburg Alumnae Association were present at the installation of Beta Upsilon, of West Virginia University, December 22nd, 1906: Miss Ethel Moorhead, Miss Jessie Byers, Miss Altai Floyd, Mrs. V. Z. Wilbur and Mrs. Ethel F. Moreland. Mrs. Christa Y. Beers, of Newcomerstown, Ohio, was also present.

The annual banquet of the Pittsburg Alumnae Association was held at the Fort Pitt Hotel, October the 20th. There was a large attendance, seven chapters being represented. In the future this will be an annual event, held in honor of founder's day, or as near the date as possible.

The meetings of the Pittsburg Alumnae Association are now being held at the Twentieth Century Club, 428 Duquesne Way. The meetings take place on the second Saturday of alternate months, beginning with October, at 2 p. m. All resident or visiting Kappas will be welcomed.



## The Key

### Akron.

The Association is this year holding business and social meetings in alternate months. The October meeting was held at the home of Mrs. Parke R. Kolbe. The active chapter and rushees were entertained.

Miss Maud Herndon, Lambda, '01, of the Akron Public Library, is devoting several months to library study in Cleveland, Ohio.

Miss Edith Auble, ex '05, is now living in Pomona, Cal.

Miss Clara Brouse, '06, editor's deputy last year, passed probation at the Brooklyn City Hospital in November.

Mrs. C. S. Brown, nee Louise Horix, is spending the holidays at her home in Akron.

Miss Amy Saunders, '06, is visiting in New York City.



### Bloomington.

The Bloomington Alumnae Association has certainly had a busy and prosperous fall.

Besides meeting regularly the first Friday of each month, we gave a luncheon for the active and new girls during the rushing season, had a booth at the Carnival, from which we made one hundred dollars for the hospital, and had a Christmas grab bag for the active chapter for the December meeting. The relationship between the Alumnae and active chapter is unusually close, resulting in mutual benefit.

Delta has had a large number of brides since the last KEY.

Married—Maude Brentlinger, Delta, and Edward Hohn. At home at Brookside, Cal.

Married—June 26th, Elva Reeves, Delta, to Thomas Elrod. At home at Columbus, Ind.

Married—August 18th, Alta Reeves, Delta, to Harry Hartley. At home Windsor, Canada.

Married—September 1, Madeline Norton, Delta, to Forest Lunt. At home at Freeport, Ill.

Married, October 3, Harrye Branham, Delta, to Harry Orr. At home at Muncie, Ind.

Married—November 19, Warde Stevens, Delta, to Charles Stoute. At home at Paoli, Ind.

The wedding of Ruby Bollenbacher, '05, and Mr. Carroll Lindley Beck will take place December 26th at Bloomington, Ind. At home No. 526 N. Penn. Street, Indianapolis, Ind.

Ethel Simmons, Delta, '05, is having a successful year teaching at Argos, Ind.

Grace Norwood, Delta, '05, spent several weeks visiting an aunt in New York.



### St. Louis.

The St. Louis Alumnae Association welcomes a new Kappa to the city, Miss Blanche Van Auken, Xi.

Since last year two of our members have removed from the city, Mrs. Robert Lee Holland having changed her residence to Columbia, Mo., and Miss Winifred MacFarland to Seattle, Wash.

Miss Frances Wilde, Iota, '94, was married last summer to Mr. Walter Smith, Professor of History in Washington University.



### Texas.

The Texas Alumnae Association was organized in August, 1906, with nine members. Since the organization the membership has increased to fourteen. Two meetings have been held in Austin with splendid attendance, considering the distance most of the members had to travel to attend.

Annie Joe Gardner, Beta Xi, '05, president of the Texas Association, and Mr. I. Vance Duncan, ex '04, Phi Delta Theta, were married October 9th, 1906.

Helen Olive Devine, Beta Xi, '03, is teaching Latin and French in the White's Preparatory School in Austin.



## The Key

Alice Davis, Beta Xi, '06, and Mr. Lee Orendorf of El Paso were married October 4th, 1906.

Ethel Morey, Beta Xi, '06, and Vera Morey, Chi, '01, are spending the winter in Europe.

Charlie Thurmond, Beta Xi, '07, is attending Vassar College.

Louise Mallory, Beta Xi, ex '06, is teaching in Palestine.

Alma Jones, Beta Xi, '03, is teaching in the city schools of El Paso.

The engagement of Carrie Gardner, Beta Xi, ex '06, and Mr. Roy Calvin Sewell, '04, Kappa Alpha, has been announced.

Bennie Brown, Beta Xi, ex '08, is spending the winter in Birmingham, Ala.

Katherine Searcy, Beta Xi, '06, is principal of a grammar school in Brenham.

Born—To Mr. and Mrs. S. W. Fisher (Lucile Wathen, Beta Xi), a son.

Julia Ideson, Beta Xi, ex '04, is librarian of the Carnegie Library in Houston.

Virginia Rice, Beta Xi, '05, Columbia, '06, is teaching in the Cowart School in Dallas.

May Jarvis, Beta Xi, '06, is Fellow in Zoology in the University of Texas.

Lolla Judge, Beta Xi, '04, is doing graduate work at Columbia this year.



## Los Angeles.

The Iota chapter of Kappa Alpha Theta entertained the members of all the fraternities residing in Los Angeles on Saturday afternoon, Nov. 17, 1906. The affair was in honor of Mrs. E. T. Garrettson, their National President, and was a grand success.

Mrs. E. F. Merrill (Nellie Williams, Beta Mu), has moved to Los Angeles, and joined the ranks of Los Angeles Association.

All Kappas who come to Los Angeles will find a register at the Young Women's Christian Association, contain-

ing the names and addresses of all our Alumnae Association members. We have representatives from twenty different active chapters, so you may find some long lost friend. Grace Maxwell, from Mu chapter, is the Educational Secretary of the Young Women's Christian Association here, and will be glad to welcome all visiting Kappas.





**In Memoriam.**

---

**Caroline K. Smith.**

Miss Caroline K. Smith died November 19th, 1906.  
Initiated into Alpha Chapter, Kappa Kappa Gamma, 1873.  
Graduate of Monmouth College, Monmouth, Illinois, 1875.

---



Alumnae



Personals

### Phi.

Elsie V. Tucker, '04, was married Oct. 10, 1906, to Herbert W. Kenway, Technology, '06, at her home in Newton. They will reside in Washington, D. C.

Married—October 22, 1906, Minnie Stuart, ex '05, to E. E. Gillett, Harvard, '05. Their home is to be in Manchester, N. H.

Lottie Tirrell, ex '06, was married October 24, 1906, to Juan P. Tomas, at Buenos Ayres, Argentine Republic.

The marriage of Mary A. Reeves, ex '07, to Marcus J. Gates, took place October 25, 1906, at her home in Howland, Ohio. They will live in Warren, Ohio.

Helen M. Wright, '06, is taking a post-graduate course at Simmon's College.

E. Francesca Skerry teaches English and Latin at the Middletown High School, Conn.

Edna Tirrell, ex '08, is taking the library course at Pratt Institute.

Mary French, ex '09, is now at De Pauw University.

Dr. Amber A. Starbuck has recently received an appointment as interne in the Springfield General Hospital. She has been during the past year interne at the Massachusetts Homeopathic Hospital.





## The Key

### Beta Epsilon.

Elizabeth Finnigan, '02, is engaged to Mr. Faris of New York.

Madeline D. Skinner, '03, is engaged to Mr. Thayer McLaren.

Elizabeth Thompson, '03, is assistant in botany, and Alice Haskell, '06, is assistant in English at Bernard.

The following members are doing graduate work at Columbia University: Virginia Gildersleeve, '99; Elizabeth Thompson, '03; Katherine S. Dotey, '04; Emilie Hutchinson, '05; Lily Murray, '05; Alice Haskell, '06; May Newland, '06, and Helena Fischer, '05.

Louise Lockwood, '95, is engaged to Mr. Thurber of New York.

Ethel M. Pool, '04, is teaching at the St. Agatha School, New York.

Maude Wilcox, '97, is teaching in Miss Spence's School, New York.

Rev. and Mrs. Thomas Smith Donohugh (Agnes Leaycraft), '98, sailed in September for India, where they will take up their missionary work.

Alice Draper, '05, sailed in October for a tour around the world.

Carrie Carmen, '98, is engaged to Prof. John George Jack of Harvard.

Mary Budd, '02, is engaged to Joseph Skinner.

Margaret Stone, '04, was married to Joseph Corrigan of New York, December 3.

Janet McCook, '02, is engaged to Malcom Whitman of Harvard. She has recently been made a trustee of Barnard. She has also been elected one of the thirty directors of the new National Committee of the Y. W. C. A.



### Beta Sigma.

Engaged—Emily Chapman, '05, to Ralph Stoddard of White Plains, N. Y.

Edna Wakefield, ex '07, is studying at the New York School of Philanthropy.

Ruth Cutter is secretary of the firm of Cotrell & Leonard in Albany, N. Y.

Beta Sigma has enjoyed meeting Edna Tirrell, Phi; Elizabeth Sherwood, Beta Zeta; Mildred Griffith, Beta Tau, and Ada Cates, Omega.



## Psi.

Grace F. Swearingen, Psi, Ph. D. at Berlin, is professor of English at Blackburn College, Carlinville, Ill.



## Beta Tau.

Marion E. Wright, '00, is teaching in Cleveland, Ohio. Address, No. 1346 E. 82nd Street, N. E.

Eva M. Bryan, '99, is studying for Ph. D. in Syracuse University.

Ella S. Blakeslee, '85, is teaching in the Evening School for Girls on West 47th Street, New York City. Address, 150 W. 124th Street.

Mrs. Dr. Fred Morgan now resides at No. 411 E. Columbus Street, Colorado Springs, Colo.

Faith Coon, '03, and Minnie B. Woodworth, '93, are teaching in the same high school in Bradford, Pa.

Margaret J. Green, '05, has a position in Newark, N. J., and resides at 192 N. 11th Street, Roseville, Newark, N. J.

Frances H. Thayer, Beta Tau's convention delegate in 1904, has gone to Redlands, Cal., for a year's rest.

Anna E. Telfer, '04, our convention delegate in 1902, is now Mrs. Clifford H. Searl, and has a beautiful new home at No. 501 Comstock Avenue, Syracuse, N. Y.

Mabel C. Johnson, '05, has a position in Montclair, N. J., and is able to meet with the New York Alumnae Association.

Bessie A. Reed, '93, sailed for Europe, September 28th, to study voice culture with Bouy in Paris. Soon after her arrival there she was taken with typhoid fever. She is now convalescing at Holy Trinity Lodge, 4 Rue Pierre-



## The Key

Nicole. She expects to remain in Paris and pursue her studies after her recovery.

Marie S. Cary, '98, was recently married to Henry Burdette Cleveland, and resides at No. 18 Storrie Street, Amsterdam, N. Y.

Edna P. Miller, '01, was recently married to Mr. Carroll Luther Chase. Address No. 11 Onedia Street, Utica, N. Y.

Ada C. Holmes, '94, has gone to Persia as a missionary. Address, Fisk Seminary, Urumia, Persia.

Mrs. Justus M. Scrafford (Frances Sager), '01, has gone to Paris with her husband and little daughter for two years' residence. Mr. Scrafford will continue his architectural education in that city.

Mrs. Dr. S. H. Day (Minnie Hasbrouck), '98, of Auburn, N. Y., has a daughter, born November 7th, 1906.



### Beta Alpha.

Born—A son, Karl Corley, Jr., to Dr. and Mrs. Karl Corley (Ida B. Hill).

Alice M. McKelden, '05, has announced her engagement to Chester Dimick, professor of mathematics at the Revenue Cutter Station, Arundel Cove, Md.

On Saturday evening, November 24th, a reception was given in honor of Miss Mary Dechert Griffith, Grand President, at Houston Club, University of Pennsylvania, by the active members and alumnae of Beta Alpha Chapter.

On October 27th, Mary H. Geisler, Beta Alpha, was married to Everett Franklin Phillips, Ph. D. Dr. and Mrs. E. T. Phillips are residing at Washington, D. C.



### Gamma Rho.

Gertrude Dowler, ex '07, is attending the Kindergarten College in Chicago.

Mary Heydrick is spending the winter in Washington, D. C.

Born—To Mr. and Mrs. George W. Wakefield (Florence Courtenay), a daughter.

Born—To Mr. and Mrs. Richard Merril (Agnes Espey), a son.

Mrs. Blanche Beecher Hatch, of Erie, visited us several days this fall.



### Beta Gamma.

Elizabeth Humphries, '06, is teaching English in her home High School in Portland, Ind.

Helen Felger, '06, has a position in the High School in Newark, Ohio. She visited the chapter for a few days in the Fall.

Mary McKinley, '06, is at home in Boise, Idaho.

Mrs. Jane Glenn Emery, of Allegheny, visited recently in Wooster.



### Beta Nu.

The engagement of Miss Lillian Pope ex '08, to Mr. William E. Evans, Σ A E, '06, has been announced.

Faith Welling, '01, and Mr. Ernest Merrill, B O II were married in September.

Mabel Fuller and Mr. Walter Klie, Δ T Δ, were married November 9, 1906.

Bernice Davis and Mr. Henry L. Scarlett were married in October.

Edith St. John and Mr. John Smith, of Cleveland, were married in December.

Sarah Harbine and Mr. Rufus Lee Weaver, of New York, were married in December.

Talmadge Rickey is teaching this winter in Jacksonville, Fla.

Mabelle Bradley is attending Vassar.

Married—Harrietta Kauffman to Mr. Chas. Cunningham, Phi Kappa Psi, June 9, 1906.





## The Key

### Beta Delta.

Married—Mabel Stewart, '05, to Thomas Buell, '04, Delta Tau Delta, October 20, 1906.

Mary Heddin is teaching in high school in Jackson, Mich.

Maud Durlin is teaching in Erie, Penn.

Anna Broomhall and Mabel Reid are teaching in Port Huron, Mich.

Mabel Allen is teaching in Cadillac, Mich.

Dorothea Rouse, '05, has announced her engagement to Orrin K. Earl, Beta Theta Pi, of the University of Michigan, now a resident of Chicago.

Susan B. Potter, '05, is spending the winter in Oakland, California.



### Kappa.

Our hearts were gladdened during the Christmas season by the presence of a number of Kappa alumnae—Daisy Prideaux, Mabelle Stewart Buell (affiliated with Beta Delta), Edith Cold and Belle Ammerman were all in town. Lou Beers Whelan was here the first part of December.

Bessie Camburn, '06, who is taking work in the University of Chicago this year, spent the vacation at her home in Burr Oak, Mich.

Nell Johnson Davis writes that she has a nine-months-old girl who is a typical Kappa maid from Tennessee.

Fannie Northrup is spending the winter in California.

Announcement has been made of the marriage of Marietta Avery to Newton W. Cross on October 10th. They are now at home at Fort Collins, Col.

Anna Sands has been very ill with typhoid fever. She is slowly improving.

Ethel Gurney Chappell has returned from her honeymoon in Europe and is now at home in New York City.



### Iota.

Mrs. W. C. Evans (Laura Goldsburg, '76), has recently moved to Oakland, Cal., where Mr. Evans is in

charge of the Oakland District Methodist Church as presiding elder. Address No. 720 14th Street.

July 17th, born to Rev. and Mrs. Cecil (Elizabeth Hite, '97), Bluffton, Ind., a son, Robert Edgar Cecil.

November 29th, born, to Mr. and Mrs. Isaac Springer (Mildred Bishop, '04), a daughter, Olive.

November 17th, born, to Mr. and Mrs. John Higdon (Lillie Cline) a daughter, Mary Hester.

October 24th, Margaret K. Walmer and Wharton Wetherford Rogers, Beta Theta Pi, were married in Bluffton, Ind. Many of Iota's active members attended the wedding.

Born, to Mr. and Mrs. Samuel Snow (Lora Reed), at Orangeville, Utah, a daughter, Dorothy.

Ella Bourne, '91, of Evansville High School, has been granted a year's leave of absence for study abroad.

Born, to Mr. and Mrs. Bernard Scafield, in July, a second son, Bernard, Jr. Mr. and Mrs. Srafield (Lena Brya), have recently moved to Indianapolis.

Esther Bechtel is spending the winter in Topeka, Kan., with her sister, Joy, who is teaching in Topeka High School.

Mrs. Harry Morgan (Elsie Wilson), spent the summer in the East, most of the time at Asbury Park.

Married—November 10th, 1906, at Crawfordsville, Ind., Mary Harding, '05, and Clifford Allen, Jr., Beta Theta Pi. At home, Greencastle, Ind.

Mrs. J. A. Greenstreet (Ethel Maxim), and daughter, Dorothy, spent the summer in Maine.

Mr. and Mrs. John H. Zimmerman (Edythe Gipe), of Mt. Sterling, N. C., will spend the holidays in Indiana.

Bess Bacon is in Herkimer, N. Y., attending Foltz Mission Institute.

Rosa A. Marquis is spending the winter in Germany, studying the violin.

Otta Bartlett, '94, is teaching German in the High School in Terre Haute, Ind.

Martha Tarbell, Ph. D., '83, has published Tarbell's Teachers' Guide to the International Sunday School Lessons for 1907.



## The Key

Bertha Reed, '98, received a fellowship at Chicago University and at Bryn Mawr. She accepted the latter and is doing graduate work in English there.



### Eta.

Fern Ryan, '99, was married in November to Mr. Phillip L. Allen. At home No. 52 Irving Place, New York City.



### Beta Lambda.

Lelia King, '05, was married in October to Mr. R. W. Elden, also of Illinois University. At home No. 175 Claremont Avenue, New York City.



### Epsilon.

Married—Clara DeMotte to Mr. Charles Munce. Mr. and Mrs. Munce will reside at Lake Fork, Ill.

Beulah Baker will leave shortly for New York, where she is planning to spend the winter.

Elizabeth Graff, Bertha Coyle, Lucy Williams and Miss Bailey were among the visitors at initiation, November 17.

October 24th, Clara DeMotte was married to Mr. Charles C. Munce of Lake Fort, Ill.

Elizabeth Bell Welty, '01, Wellesley, '04, was married December 19th to Mr. Louis Foreman. They will be at home in East Gene Street, Bloomington, Ind.

Grace Parker, '03, is now a member of the faculty at Illinois Wesleyan.

Julia Holder, '05, is attending Smith College.

Lucy Williams, '06, is attending the Liberty School at University of Illinois, where she is living in the Beta Lambda house.



## Chi.

Cleora Wheeler, whom you all met at convention, is spending the winter in California. We miss her very much, but are glad to say that her health is greatly improved.

Born—To Mr. and Mrs. Horace Kline, a daughter, November 21.

Born—To Mr. and Mrs. William Warren Owens, a daughter, during November.

Elizabeth Shepardson, Upsilon, is spending the winter in Minneapolis.

Mary Everts, '95, and Mr. Charles Hull Ewing, of Chicago, were married on October 8 at Lake Minnetonka. They will make their home in Chicago.

The marriage of Isabel Hills, ex '07, and Malcolm Curry, Beta Theta Pi, which took place on October 8, is announced. They will be at home in Willimantic.

Clara Wheeler, ex '05, of Chicago, is visiting friends in Minneapolis during the holidays.

On Friday evening, January the 25th, Miss Katherine Everts, Chi, '92, will read, "The Spanish Gypsy" in Association Hall, Brooklyn, under the auspices of the Beta Sigma Chapter. The tickets will be one dollar each, and the proceeds will go to the Endowment Fund of Adelphi College.



## Beta Zeta.

Born—To Mr. and Mrs. Karl Von Enda (Alice Ankeny), of Iowa City, a daughter, October 14, 1906.

Miss Gladys Whitley was married to Mr. Varrick Crosley, September 8, 1906.

The engagement has been announced of Miss Mary Parsons West, Phi Beta Kappa, '06, to Mr. Edward Barrett, Phi Beta Kappa, Sigma Chi.

Miss Elizabeth Sherwood is studying in the Library School at Pratt Institute, New York.

Born—to Mr. and Mrs. C. R. Mack (Bertha Prescott, ex '00), a son, Sioux City, Iowa, September 8, 1906.

Mrs. Tanner (Helen Clapp), of Davenport, Iowa, visited Alumnae Kappas in November.



## The Key

Miss Ruth Paxton, Beta Zeta, '98, was in New York December 5th to 9th, attending the joint conference of the two Y. W. C. A.'s, at which a consolidation was affected.



### Theta.

Gail Poor has moved to Kansas City.

Mrs. K. S. Gardner (Elizabeth Schweitzer, '90), is visiting in Columbia, Mo.

Mrs. M. L. Thomas (Minnie Russell, '79), attended the banquet at Columbia, Mo., on October 13th.

Edith DeBolt, '04, is teaching in Paso Robles, Cal., this winter.

Helen Montgomery, '02, is teaching at Elmwood Seminary, Farnington, Mo.

Madeline Branham, '04, is teaching drawing in the Columbia schools.

The engagement is announced of Eugenia Rengo, ex '07, to Leonidas Moorman.

Married—December 8th, at Fort Smith, Ark., Laura Klein, ex '07, to Walton Vaile, Phi Delta Theta. They will make their home in St. Louis.



### Sigma.

Mrs. May Whiting-Westermann, '96, of St. Louis, former Grand President, spent the holidays with her parents in Lincoln, Neb.

Mrs. Louise Hargreaves Stein, of Springfield, Ohio, is spending the month of December in Lincoln.

Madge Merrell, of Fairbury, is the guest of Margaret Whedon, in Lincoln, Neb.

Blanches Emmons, of Denver, is the guest of her cousin, Mabel Hays, in Lincoln, Neb.

Edith Butler came from Omaha for the Thanksgiving vacation, the guest of Claire Funke, Lincoln, Neb.

Lola Southwick was compelled to give up her work at Bryn Mawr, in the middle of the semester, on account of ill health.

The local alumnae of Sigma Chapter, who number about forty in all, took luncheon at the fraternity house, November 24th. They propose to do this hereafter once a month, finding it a pleasant and enjoyable way of keeping in touch with the active chapter.

Gladys Hargreaves, Edith Wilson and Mary Minor, all of Sigma, spent the Thanksgiving holidays in Fairbury, Neb., as the guests of the Sigma Alumnae there.

Members of the fraternity who have recently taken up their residence in Lincoln are Mrs. Adelloyd Whiting Williams, Sigma, '00; Edith Shedd Sizer, Sigma, University School of Music, and Mrs. Waddell, Eta chapter, but now affiliated with Sigma. The latter has gone to Cuba to spend the winter, but will return, to become a permanent resident of Lincoln in the spring.

Laura Hurty Rankin visited Kappas in Bloomington, Ill., this fall.

Adelle Lathrop, '04, who is teaching English in Wellesley, spent Thanksgiving in New York.



### Beta Omicron.

Kitty Monroe, '03, is taking graduate work at Galane University.

Hazel Ellis is spending part of the winter in Washington and Chicago.

Mee Robertson, '05, is teaching at Clinton, La.

Hester Craig is at home in Vicksburg. She has just recovered from a severe illness.

Mary Minor spent the autumn months abroad, touring through England and Ireland.



### Beta Eta.

Edith Liliencrantz was married to Dr. Lewis Sanborn Thorpe, on the 11th of October, 1906. Their home is in Orangethorpe, Covina, Cal.





## The Key

### Hi.

Elza Lichtenberg was married to Henry Johnson in January, 1907. Mr. Johnson is a prominent business man of South Bend, Ind., where their future home will be.

Mary Bell is visiting Mrs. Frederick Palmer (Florence Mason), in Calcutta, India.

Edna Wemple spent the summer traveling in Alaska.



✠✠✠✠	Exchanges.	✠✠✠✠
------	------------	------

JULIETTE HOLLENBACH.

It is a pity that the Exchange editorship cannot circulate in some miraculous way, so that each active fraternity member might have a chance to profit by the advantages it brings, for there is no better way of getting into touch with the live issues of the Greek world than by dipping into the various journals. The journals themselves, although characterized by an inevitable unevenness of literary value, contain a great deal of very readable matter, and the tone is uniformly high, in spite of a few visible flaws, such as the vein of egotism which is also inevitable, for what right-minded Greek does not feel that his or her fraternity is, after all, just a little superior to the best of the others? The Exchange editor of the Southern Kappa Alpha "Journal" records a few impressions along these lines which may prove of interest:

"After reading the Journal's exchanges for a year, I have formed some general impressions of the Greek Press which may be of interest. First, as is the case with nearly everything else in the fraternities, most of the active working is done by a very few men. The chapter secretaries write their letters—often because a letter is expected of them rather than because they have anything to say—and some men in the active chapters make contributions now and then; but most of the readable matter is furnished by the editors and a few steady contributors among the alumni.

"The general tone of the fraternity journals is earnest and practical, often even hortatory. Judging from the contributions in the magazines, one might for a time suppose that a fraternity chapter was something between a Christian Endeavor Society, that laid strong emphasis on self-improvement and a socialistic community, and that the fraternity magazine was a sort of religious publication containing sermons, social and religious aspirations, accounts



of revivals and revival speeches. Of course, this is exaggerating things a good deal; but these qualities are very prominent in the most readable articles, especially those of the sorority journals. They are altruistic in sentiment, optimistic, tense with fervor and aspiration.

"One more impression I may mention. In reading the best and most inspiring contributions of the various magazines I fail to find much difference amongst the various fraternities, especially the larger ones. That they all have their individualities and special purposes, I do not doubt; but these individualities do not appear in their publications. They preach the same sermons from different texts; brotherhood, manliness, earnestness, exertion for worthy objects."



The following is a clear account of the proposed Pan-hellenic library movement:

"Upon the initiation of Delta Upsilon, a movement is now under way to establish and perpetuate a Pan-hellenic Library, consisting, so far as obtainable, of all the literature of every fraternity in America. The plan is for each fraternity to contribute to the common collection as full a set of its own publications as is available, steadily supplementing its contribution as new matter is published. Each fraternity so co-operating is to appoint a representative empowered to act for it in all matters pertaining to the Library, and no expense is entailed upon the fraternities other than that of supplying its literature. The collection is to be turned over to the care of the New York Public Library (Astor, Lenox and Tilden Foundations), which is naturally glad to supply shelf-room and care for so unique a collection. The Pan-hellenic Library is thus to be as suitably located as possible, and will make readily accessible such an array of fraternity literature as was never before gathered together.

"In addition to Delta Upsilon, this movement has already enlisted the interest and support of Alpha Phi, Kappa Alpha, Kappa Alpha Theta, Kappa Kappa Gamma, Sigma Alpha Epsilon, Sigma Chi and Theta Delta Chi. It is earn-

estly to be hoped that all other fraternities will fall in line as quickly as may be. The value of such a library as the plan looks for is at once apparent. It will put before the student, in the most convenient way, the entire history of the fraternity movement and of each fraternity. It will preserve the records of all Greek-letter societies and enable their members to profit by the labor and experiences of their predecessors. Fraternity literature is growing so rapidly that it is passing beyond the resources of the private collector. A public collection, permanently maintained and steadily added to, has become a necessity; and the value of the proposed collection will be limited only by the number of fraternities who will support and contribute to it."—Sigma Alpha Epsilon "Record."

"It is doubtful if any fraternity has (or needs) a complete file of every fraternity magazine, and yet such a file would be a valuable collection for reference. It is hoped that every fraternity will authorize its librarian to aid in the development of this Pan-hellenic library."—Delta Upsilon "Quarterly."

Since it would be about as easy for each fraternity to contribute three sets of its publications as one, why not place a duplicate library in Chicago, and another in the far West, instead of limiting the numbers of those who could have access to such a collection to the dwellers in and around New York?



Mr. Guy Morrison Walker is the author of an article in the Phi Kappa Psi "Shield," whose purpose is to prove, by means of statistics gathered from his own fraternity, the superiority of the small college over the large university. Following are a few extracts:

"From these records it is apparent, first, that the largest number of successful men come from the smaller colleges whether they be church or state; second, that the percentage of success is very much higher among the students of the smaller colleges than it is among those of the large schools, and third, that the pre-eminent place both in the



total number of successful men and in the percentage of success, goes to the small church colleges.

"Startling as this conclusion may seem, it will be found upon investigation to be supported not only by the facts but by the soundest and best of reasons drawn from the quality of the education secured and the conditions under which it is secured in these colleges.

"Many of these reasons are, of course, already well recognized and need not be more than mentioned. It is, for instance, well known that there is a wide difference between the social life and standards of living in the small colleges and the large universities, the social life in the small schools being much simpler and the standards of living much plainer than that which prevails in the larger ones.

"In the smaller colleges there are fewer college organizations and student enterprise to distract the attention, and consequently scholarship and college honors hold a larger place in the students' interest and there is greater earnestness and sincerity in the attitude of the student body towards their college work.

"Then, too, there is in the smaller colleges a personal association or nearness between the instructor and the student that is absent in the larger colleges, because of its impossibility. The result is, that the student in the small college secures personal contact with men of clean life and high ideals during the formative years of his life and their interest in his work and pride in his accomplishments are an inspiration to him and a constant incentive to more and better work."

The big universities are here, however, and apparently here to stay, and it is for the fraternities, especially the fraternity alumni, to do their utmost to counteract not only the disadvantages, but the active evils of university life.

Mr. Clarence F. Birdseye touches upon this point in a widely-quoted article in the "Outlook":

"As the individualism of the former small colleges units has disappeared, there have grown up the small fraternity units of from ten to forty members each, which daily in-

fluence the students throughout their course. This influence, whether good, bad, or indifferent, is dominant in many colleges. If our huge faculties can not, like their smaller prototypes, closely touch the lives of their individual pupils, may not this be done through thoughtful alumni acting on the undergraduate members of their own fraternity, thereby greatly increasing the number of those who will pursue their college course earnestly and for its own sake?

"The recent great growth of the Greek-letter fraternities has not been fortuitous. Although their true meaning has not been studied or understood—to the greater shame of the faculty system—these fraternities are today great educational influences which furnish our most available means to raise the moral and mental tone of our colleges and universities—and as well of our preparatory schools—and to aid our sons and grandsons in a struggle against greater odds and temptations, and moral, social, and athletic distractions, than the older generations ever dreamed of.

"Surely the power of these alumni is great enough. From the president, vice-president, and chief justices of the United States, through all our educated classes, the pick of our alumni in wealth and influence are fraternity men. If a tithe of this power can be turned back into the lives of the undergraduates to supplement the efforts of the faculties, we can do much to restore individualism. It has been under the faculty rule that moral, mental and athletic conditions have steadily grown worse, although they are now improving in some ways. Certainly no harm can come from organizing the alumni to consider and help end the present evils. Neither college nor fraternity conditions are at present ideal. They are often bad, and there is real foundation for all complaints. Unless promptly checked, the evils will grow far worse and more difficult to root out. This question must be studied by its friends, and the reform must come from the fraternity alumni; for the fraternities can be awakened and developed, but not driven, nor driven out."





## The Key

Here are a few questions, quoted from an editorial in the "Shield" of Phi Kappa Psi, which may penetrate the weak spots in some chapter's armor of complacency:

"How many chapters conduct their meetings with a due regard to the form which gives to such a gathering its distinctive character? How many give careful consideration to correspondence which represents the relation of the chapter to the general fraternity? How many approve intelligently the minutes which become the permanent history of the chapter? How many retain the old plan of literary exercises that was once universally in vogue? How many conduct their meetings with decency and decorum, and how many permit them to degenerate into "rag chewing" matches? How many give to the business affairs and college concerns of the chapter the thoughtful and deliberate consideration that is their due? How many chapters permit their meetings to be subsidiary to the outside engagements of members, and permit them to be broken up by trivial diversions?"

Another warning for the self-satisfied chapter, borrowed from the "Rainbow," of Delta Tau Delta:

"The active chapter which causes the Arch Chapter most concern is not always the one that has struck a run of hard luck or returns in the fall with depleted ranks. Even a few men, fired with the right spirit and working with courage and unflagging energy, can snatch victory from the gloomiest uncertainty and win out against the heaviest odds. Where the germ of decay is likeliest to be found is in that chapter so assured of its superiority, so certain of no room for improvement, so satisfied with its position and attainments of the past that its members blindly settle into their quiet slumbers of fatuous complacency."



The following notice, quoted from "Beta Theta Pi," is of interest to Kappas:

"Phi Kappa Psi has issued a spiking book entitled "The Record of Phi Kappa Psi," a short history of the Phi

Kappa Psi Fraternity, by Guy Morrison Walker, Indiana Alpha, '87.

In 1903, Mr. Walker's wife issued a similar book for  $\kappa \kappa \Gamma$ , of which she is a member, and the one book is probably the outgrowth of the other, although the greater age and size of  $\Phi \kappa \Sigma$  has caused a corresponding increase in the size of the book relating to  $\Phi \kappa \Sigma$ ."



Four chapters of Delta Upsilon have recently taken possession of new chapter houses.

Three chapters of Beta Theta Pi,—Dickenson, Ohio State and Vanderbilt,—are building houses.

Delta Gamma installed a new chapter, Iota, at the University of Illinois, May 12, 1906. The "Anchors" for July prints a number of attractive cuts of the University campus and buildings.

The "Scroll" of Phi Delta Theta is authority for the information that since the 1905 edition of Baird's Manual was issued 36 chapters have been established and six revived by seventeen mens' fraternities, exclusive of the professional societies, and thirteen have been established and two revived by nine sororities, making a total of fifty-seven new chapters in less than two years. According to these figures more than half of the national fraternities and sororities have added to their chapter rolls, so that "expansion" would seem to be the Greek watchword.



### **Conventions.**

Phi Delta Theta held its national biennial convention at Washington, D. C., in November.

Gamma Phi Beta met at Seattle, Wash., during the second week in October.

The seventy-second annual convention of Delta Upsilon was held at Middlebury, Vt., October 25-26.

Alpha Chi Omega celebrated her twenty-first birthday



## The Key

by meeting with the parent chapter at Greencastle, Ind., in November.

The thirteenth biennial convention of Sigma Nu was held in Chicago, beginning December 31.

The fiftieth anniversary national convention of Sigma Alpha Epsilon met at Atlanta, Ga., on December 26.



J. F. NEWMAN

NO. 11 JOHN STREET  
NEW YORK

OFFICIAL JEWELER

TO Kappa Kappa Gamma

*Exclusively Genuine Materials and Fine Grade Work*

CATALOGUES, SAMPLES, ETC., ON APPLICATION

---

LEATHERS

THE **Atley** LINE

COLLEGE AND FRATERNITY  
HIDES, BANNERS, PILLOWS, ETC.

*Send for descriptive Catalogue*

J. F. NEWMAN

11 JOHN ST., N. Y.



# AUTOCRAT STATIONERY

SPEAKS FOR ITSELF AND SELLS ITSELF

It's the Easy-Selling, Quick-Moving Line  
That Is Profitable to Handle

# AUTOCRAT

  
 **STATIONERY** 

never remains long on the counters.

¶ It is in constant demand. It is the most widely advertised Correspondence Paper on the market. Should be sold by all stationers.



*Send for descriptive matter  
and special assortment offer*



GET IN LINE!

SELL AUTOCRAT

---

THE TRADE SUPPLIED BY

**NATIONAL MERCANTILE Co.**

W. F. MAIN, PROPRIETOR.

COR. DUBUQUE AND COLLEGE ST.,  
IOWA CITY, IOWA.

40 DEARBORN ST.,  
CHICAGO, ILL.

*WANTED— A few more good reliable Salesmen, who can sell our  
Assortments on their merits to a good class of Retailers.*

*The*  
**Great Dry Goods Store  
of Central New York**



**"THE HOUSE THAT DEY BUILT"**

**G**ROWING every day in the volume of trade and in what is known as the good will of it — reaching out for all the business there is and getting our share.

**Dey Brothers & Company  
Syracuse**



BURR,  
PATTERSON  
& Co.

*Makers of the*  
Official

We pay special  
attention to  
the

|| KAPPA  
KAPPA  
GAMMA  
|| KEY

Jewelry and Finishing of our Badges; compare them  
with other makes and you will appreciate our efforts

*Write for Novelty Catalogue.*

**Burr, Patterson & Company**

DETROIT, MICHIGAN

73 W. FORT STREET

OPPOSITE POSTOFFICE

Have you a  
SONG BOOK of ?  
Kappa Kappa Gamma ?

*New Edition with Music, \$1.25*

Kappa Handbook, 25 cents

*Send orders to*

Mrs. GUY WALKER

504 W. 112th Street

New York City

**E. M. Stephens**  
**Publishing Company**  
**Columbia, Mo.**

**PUBLISHING AND PRINTING**  
**BOOK BINDING**

*Make a Specialty of College Annuals and Publications.*  
*Estimates gladly furnished.*

*Established 1872*

*Established 1872*

**Kappa Kappa Gamma Jewels**

Manufactured by  
**WRIGHT, KAY & COMPANY**  
**Official Jewelers**

Every Wright, Kay & Co. Badge from the making of the pin to the setting of the jewels is made in our own factory, under our own supervision, and each badge before being stamped W. K. & Co. is thoroughly tested and has to be absolutely perfect.

The following catalogues sent promptly upon request:

BADGES - JEWELRY  
NOVELTIES - PENNANTS  
PIPES, ETC.

INVITATIONS  
ANNOUNCEMENTS  
PROGRAMS - MENUS, ETC.

**WRIGHT, KAY & COMPANY**  
**Importers, Diamond Merchants**  
**Fraternity Jewelers**

DETROIT :  
140-144 Woodward Avenue

PARIS :  
24-26 Rue des Petits Hotels



## 50 CALLING CARDS \$1.00 (Including Engraved Plate)

These cards, in script, are as good as they can be made—rich, distinguished, finest grade. Send a dollar, with your name (one line), or ask for a sample if you are skeptical. HOSKINS ENGRAVING leaves a lasting impression of tone and dignity—an exclusiveness such as you seek.

**W**HY not let us be your Stationer? Let us furnish your chapter paper. If you have no die, we will make one.

Your personal Engraving will also receive careful and intelligent attention — no pains are spared to make it perfect.

Samples for examination are sent on request.

WILLIAM H. HOSKINS CO.  
904 - 906 Chestnut Street  
Philadelphia

## *Auld Standard Badges*

*Write for*

New Illustrated Catalogue of Badges, Novelties  
and Stationery

 D. L. AULD 

---

195 - 197 E. Long Street  
Columbus, O.

*Official Jeweler to Kappa Kappa Gamma.*

1820

1906

# Indiana University

BLOOMINGTON

Co-educational since 1867

Fifteen hundred students

Seventy-one members of faculty



For Catalogue or special announcements address *The REGISTRAR*  
or

William Lowe Bryan  
*President*

# Rothschild Bros.

THE leading furnish-  
ers of CORNELL  
Room and Fraternity  
Decorations, Pictures,  
Flags, etc.



# Rothschild Bros.

# Lamb & Spencer



GROCERY  
*and*  
BAKERY



318 S. State St., Ann Arbor, Mich.

Telephones : BELL 20, NEW STATE 20



Good Enough for *Kappas*  
and other *good* people

BEICH'S  
**Fancy**  
**Chocolates**

If you can't obtain them,  
drop us a card please.

PAUL F. BEICH CO.

Bloomington, Illinois

*Also Makers of*

Beich's Peanut Butter

Wedding Ring  
Goods  
are always  
good

---

A Complete Line of  
Dependable *Food Products*

---

J. F. Humphreys  
& Company

BLOOMINGTON, ILLINOIS

**Cut**  
**Flowers**

*Floral*  
*Decorations*  
*Etc.*

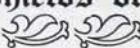
LARGE STOCK AT  
MODERATE PRICES

Phone and telegraphic orders  
given prompt attention

*The*  
**BOOL FLORAL**  
**COMPANY**

215 East State Street  
ITHACA, N. Y.

H. J. Howe  
Jeweler and  
Silversmith

Special Agents for  
Kappa Kappa Gam-  
ma Fraternity pins.  
Mounted shields of  
all colleges 

---

201 South Salina  
Street, Syracuse  
New York

## HARPER BROS. COMPANY



## Farm Machinery Vehicles Binder Twine

*Office and Warehouse:*

405 - 411 South Main Street  
406 - 412 South Center Street  
BLOOMINGTON, ILL.

## UNIVERSITY OF MISSOURI

### *Buildings*

¶ The University of Missouri occupies thirty-three large stone and brick buildings—the departments at Columbia twenty-three, and the School of Mines at Rolla eight. Buildings, Grounds, Books and other Equipment valued at Two Million Dollars.

### *Faculties*

¶ The faculties contain one hundred and ninety-nine officers and teachers. There are in addition, numerous non-resident lecturers in different departments.

### *Ten Departments*

*College of Liberal Arts*  
*Graduate School*  
*Missouri Military School*  
*Missouri Teachers' College*  
*School of Medicine*  
*Missouri Experiment Station*  
*Agriculture College*  
*Law Department*  
*School of Engineering*  
*School of Mines*

For further information, address the  
University Publisher, Columbia, Mo.

J. K. Langdon

C. T. Southard

## J. K. LANGDON & COMPANY

GREENCASTLE, INDIANA

### *Dealers in*

¶ College Text Books (new and second-hand), Fine Stationery and Students' Supplies of all kinds.

¶ Visiting Cards, Wedding and Graduating Class Invitations, Programs, etc., all properly engraved and printed in the latest styles.

¶ We also sell Umbrellas for ladies and gentlemen—and the best make of Fountain Pens.

¶ YOUR patronage is solicited.

## Diamonds

AND THE BEST OF  
JEWELRY—

Always the *latest styles*  
and largest stock.



*The*

**FRANK LAUBACH  
& CLEMMER CO.**



**S. ROSENBLOOM  
& SON**

Dry Goods, Cloaks, Suits,  
Shoes, Men's, Youths' and  
Boys' Clothing, Furniture,  
Carpets, Pianos, etc.

216-222 S. Salina      SYRACUSE  
213-221 S. Clinton      N. Y.

**SOROSIS  
SHOES**

AT

**E. H. Guitar's**  
COLUMBIA, MO.

**Buchtel College**

Strong Courses leading to  
A. B., Ph. B., and B. S.

Co-educational. Broad Elective Ad-  
vantages. Delightful Student Life.

*Address*

**A. B. CHURCH, L. L. D.,**  
Akron, O.

☞ Books of all kinds bound to  
order. ☞ Special Ruled Blank  
Books manufactured. ☞ Copper  
Plate Printing. ☞ Wedding An-  
nouncements, Commencement  
Invitations for Schools and Col-  
leges. ☞ Calling Cards printed  
and engraved.

*Mail orders receive careful attention*

**John P. Brennan**      711 d anal Sts.  
AKRON, OHIO.

For  
FULL VALUES in  
**Footwear**

go to

**LEVY'S**

COLUMBIA, MISSOURI.

**Photograph Materials  
Candies      Stationery  
College Postals      etc.**

**WALTER ALLEN**  
GREENCASTLE, INDIANA

**MILLARD**  
**The Printer**

**FINE PROGRAMS  
MENUS**

**Ann Arbor, Michigan**

**KAPPA  
PENNANTS**

Send us *one dollar* and we  
will mail you a large Kappa  
Pennant. If not satisfactory  
you can return it and get your  
money back.

**F. G. GILMORE**  
GREENCASTLE, INDIANA.

# Baird's Manual

of

## *American College Fraternities*

---

*New and Sixth (1905) Edition now ready*

---



HIS Book is replete with information of interest to all members of College Fraternities. It contains Histories of each of the Men's General Fraternities, the Women's General Societies, the Men's Local Fraternities, Women's Local Societies, Professional Fraternities, Honorary Fraternities and Miscellaneous Societies; a Directory of Colleges and Chapters, Statistical Tables of great interest, articles showing the geographical distribution of Chapters, Nomenclature, Insignia, a Complete Bibliography of Fraternity publications; information concerning Chapter House Ownership. In short, the Sixth Edition is a complete Cyclopedia of Fraternity Information. It is bound in befitting covers of blue, white and gold, and will be sold at \$2.00 per copy, postage prepaid

---

*Send in your orders through this office*

---



*"The love of music seems to exist  
for its own sake."*

*—Herbert Spencer*

## **GEO. W. CLARK MUSIC HOUSE**

**Wholesale and Retail  
SYRACUSE, N. Y.**

**W**E make a specialty of Musical Goods for Fraternity and Sorority members. We send goods to college people throughout the United States. Harps, Violins, Mandolins, Banjos, Guitars, College Song Books, College Songs, Music Boxes, and everything pertaining to music.

Write us for prices. Goods sent on approval.

*"The House of Quality"*

**Clark's Music House  
SYRACUSE, N. Y.**



Patronize our advertisers,  
and when doing so  
mention

**"THE KEY"**







