

# The Key

A KAPPA KAPPA GAMMA PUBLICATION

VOLUME 128, No. 4  
WINTER 2011



## *Walk a Mile in Your Sister's Shoes*

Foundation Annual Report—Page 8

*Learn how your support helps so many Kappas put their best foot forward!*

Cincinnati Hosts Walk a Mile in Her Shoes® Event—Page 42



# The Key

A KAPPA KAPPA GAMMA PUBLICATION

VOLUME 128, No. 4  
WINTER 2011

*The Key* is the first college women's fraternity magazine, published continuously since 1882.

## EDITORIAL BOARD

Editor

**Kristin Johnson Styers**, *Georgia Southern*

Associate Editor

**Lois Catherman Heenehan**, *Adelphi*

Alumna News/Profiles Editor

**Ann Graham Schnaedter**, *Missouri*

Collegiate News Editor

**Christine Robertson**, *Syracuse*

Contributing Editor

**Melisse Campbell**, *Mississippi*

Arts and Letters Editor

**Julie Robison**, *Hillsdale*

Editorial Board Chairman

**Gay Chuba Barry**, *Penn State*

Fraternity Vice President

**Beth Uphoff Black**, *Illinois Wesleyan*

Executive Director

**Kari Kittrell**

Director of Marketing and Communications

**Ashley Gilbert Moyer**, *Purdue*

Contributing Editor

**Jenny Struthers Hoover**, *Bowling Green*

Staff Photographer

**Claire Davis**, *Auburn*

Graphic Designer

**Victoria McDonald**, *Q.V. Design*

Printed by **The Watkins Printing Company**,  
Columbus, Ohio

The Key (ISSN 1063-4665) is published quarterly by Kappa Kappa Gamma Fraternity, 530 E. Town St., Columbus, OH 43215. Printed in the United States of America, copyright Kappa Kappa Gamma Fraternity 2011. Subscription price is \$3.

Preferred periodical postage paid  
at Columbus, Ohio

POSTMASTER:

Send address changes to

The Key

P.O. Box 38

Columbus, OH 43216-0038

# CONTENTS

## departments

- 2 Fraternity News**  
Welcome Eta Pi, Kappa Cares, and nominate a Fraternity leader.
- 7 In Memoriam**  
Honoring Those We Have Loved and Lost.
- 32 Accent on Alumnae**  
From Night Owls to book club, alumnae associations offer something for everyone.
- 36 Key Achievements**  
Athletes, civic leaders, volunteers and more!
- 38 Collegiate News**  
Learn about three great causes supported by Kappas on campus: Catch the Cure for breast cancer, Men in Heels for prevention of domestic violence and Kid Flicks for hospitalized children.

## Statement of Ownership

This form is required by the U.S. Post Office to appear annually in *The Key* magazine.

Statement of Ownership		Publication Title	
Publication Title		Publication Title	
1. Publication Title	The Key	2. Issue Frequency	Quarterly
3. Issue Date for Circulation Data Below	Winter 2011	4. Annual Subscription Price	\$3.00
5. Number of Copies of this Issue Published in 2011	1,000	6. Total Number of Copies of this Issue Published in 2011	1,000
7. Total Number of Copies of this Issue Published in 2011	1,000	8. Total Number of Copies of this Issue Published in 2011	1,000
9. Total Number of Copies of this Issue Published in 2011	1,000	10. Total Number of Copies of this Issue Published in 2011	1,000
11. Total Number of Copies of this Issue Published in 2011	1,000	12. Total Number of Copies of this Issue Published in 2011	1,000
13. Total Number of Copies of this Issue Published in 2011	1,000	14. Total Number of Copies of this Issue Published in 2011	1,000
15. Total Number of Copies of this Issue Published in 2011	1,000	16. Total Number of Copies of this Issue Published in 2011	1,000
17. Total Number of Copies of this Issue Published in 2011	1,000	18. Total Number of Copies of this Issue Published in 2011	1,000
19. Total Number of Copies of this Issue Published in 2011	1,000	20. Total Number of Copies of this Issue Published in 2011	1,000
21. Total Number of Copies of this Issue Published in 2011	1,000	22. Total Number of Copies of this Issue Published in 2011	1,000
23. Total Number of Copies of this Issue Published in 2011	1,000	24. Total Number of Copies of this Issue Published in 2011	1,000
25. Total Number of Copies of this Issue Published in 2011	1,000	26. Total Number of Copies of this Issue Published in 2011	1,000
27. Total Number of Copies of this Issue Published in 2011	1,000	28. Total Number of Copies of this Issue Published in 2011	1,000
29. Total Number of Copies of this Issue Published in 2011	1,000	30. Total Number of Copies of this Issue Published in 2011	1,000
31. Total Number of Copies of this Issue Published in 2011	1,000	32. Total Number of Copies of this Issue Published in 2011	1,000
33. Total Number of Copies of this Issue Published in 2011	1,000	34. Total Number of Copies of this Issue Published in 2011	1,000
35. Total Number of Copies of this Issue Published in 2011	1,000	36. Total Number of Copies of this Issue Published in 2011	1,000
37. Total Number of Copies of this Issue Published in 2011	1,000	38. Total Number of Copies of this Issue Published in 2011	1,000
39. Total Number of Copies of this Issue Published in 2011	1,000	40. Total Number of Copies of this Issue Published in 2011	1,000
41. Total Number of Copies of this Issue Published in 2011	1,000	42. Total Number of Copies of this Issue Published in 2011	1,000
43. Total Number of Copies of this Issue Published in 2011	1,000	44. Total Number of Copies of this Issue Published in 2011	1,000
45. Total Number of Copies of this Issue Published in 2011	1,000	46. Total Number of Copies of this Issue Published in 2011	1,000
47. Total Number of Copies of this Issue Published in 2011	1,000	48. Total Number of Copies of this Issue Published in 2011	1,000
49. Total Number of Copies of this Issue Published in 2011	1,000	50. Total Number of Copies of this Issue Published in 2011	1,000
51. Total Number of Copies of this Issue Published in 2011	1,000	52. Total Number of Copies of this Issue Published in 2011	1,000
53. Total Number of Copies of this Issue Published in 2011	1,000	54. Total Number of Copies of this Issue Published in 2011	1,000
55. Total Number of Copies of this Issue Published in 2011	1,000	56. Total Number of Copies of this Issue Published in 2011	1,000
57. Total Number of Copies of this Issue Published in 2011	1,000	58. Total Number of Copies of this Issue Published in 2011	1,000
59. Total Number of Copies of this Issue Published in 2011	1,000	60. Total Number of Copies of this Issue Published in 2011	1,000
61. Total Number of Copies of this Issue Published in 2011	1,000	62. Total Number of Copies of this Issue Published in 2011	1,000
63. Total Number of Copies of this Issue Published in 2011	1,000	64. Total Number of Copies of this Issue Published in 2011	1,000
65. Total Number of Copies of this Issue Published in 2011	1,000	66. Total Number of Copies of this Issue Published in 2011	1,000
67. Total Number of Copies of this Issue Published in 2011	1,000	68. Total Number of Copies of this Issue Published in 2011	1,000
69. Total Number of Copies of this Issue Published in 2011	1,000	70. Total Number of Copies of this Issue Published in 2011	1,000
71. Total Number of Copies of this Issue Published in 2011	1,000	72. Total Number of Copies of this Issue Published in 2011	1,000
73. Total Number of Copies of this Issue Published in 2011	1,000	74. Total Number of Copies of this Issue Published in 2011	1,000
75. Total Number of Copies of this Issue Published in 2011	1,000	76. Total Number of Copies of this Issue Published in 2011	1,000
77. Total Number of Copies of this Issue Published in 2011	1,000	78. Total Number of Copies of this Issue Published in 2011	1,000
79. Total Number of Copies of this Issue Published in 2011	1,000	80. Total Number of Copies of this Issue Published in 2011	1,000
81. Total Number of Copies of this Issue Published in 2011	1,000	82. Total Number of Copies of this Issue Published in 2011	1,000
83. Total Number of Copies of this Issue Published in 2011	1,000	84. Total Number of Copies of this Issue Published in 2011	1,000
85. Total Number of Copies of this Issue Published in 2011	1,000	86. Total Number of Copies of this Issue Published in 2011	1,000
87. Total Number of Copies of this Issue Published in 2011	1,000	88. Total Number of Copies of this Issue Published in 2011	1,000
89. Total Number of Copies of this Issue Published in 2011	1,000	90. Total Number of Copies of this Issue Published in 2011	1,000
91. Total Number of Copies of this Issue Published in 2011	1,000	92. Total Number of Copies of this Issue Published in 2011	1,000
93. Total Number of Copies of this Issue Published in 2011	1,000	94. Total Number of Copies of this Issue Published in 2011	1,000
95. Total Number of Copies of this Issue Published in 2011	1,000	96. Total Number of Copies of this Issue Published in 2011	1,000
97. Total Number of Copies of this Issue Published in 2011	1,000	98. Total Number of Copies of this Issue Published in 2011	1,000
99. Total Number of Copies of this Issue Published in 2011	1,000	100. Total Number of Copies of this Issue Published in 2011	1,000

## Send Us Mail!

Letters to the Editor should be emailed to [thekey@kkg.org](mailto:thekey@kkg.org) or mailed to Kappa Kappa Gamma, Attn: *The Key*, P.O. Box 38, Columbus, OH 43216-0038. We regret that we cannot respond to all letters, but we genuinely appreciate hearing from you.

# foundation annual report

## Pages 8-32

Kappas care about many causes, yet find the time and resources to support sisters in need.

### PAGE 12

**With Omega Society membership, your values determine your gift decisions.**



### PAGE 18

**Rose McGill Confidential Aid provides solace for a terminally ill Kappa and her family.**



### PAGE 20

**Scholarship recipients share their gratitude.**



### PAGE 24

**Shoring up The Stewart House so future generations of Kappas can visit this Founder's home.**



### PAGE 28

**Win-Win: An investment in leadership education reaps rewards for members and Kappa.**

*The Key* of Kappa Kappa Gamma links each member with the Fraternity. The mission of *The Key* is

- To inform, inspire and challenge
- To promote leadership, scholarship and friendship
- To sustain and nurture loyalty and interest
- To recognize the accomplishments of individuals, groups, the Fraternity and its Foundation
- To provide a forum for an exchange of information and opinion
- To be a permanent record.

## Kappa Kappa Gamma Headquarters

P.O. Box 38  
Columbus, OH 43216-0038  
866-554-1870 (866-KKG-1870)  
Fax: 614-228-7809  
Email Kappa: [kkghq@kkg.org](mailto:kkghq@kkg.org)  
Email *The Key*: [thekey@kkg.org](mailto:thekey@kkg.org)  
Upload photos to *The Key*:  
<http://uploads.kappa.org/>

## Rose McGill Magazine Orders

800-KKG-ROSE (800-554-7673)  
[www.kappa.org/rose](http://www.kappa.org/rose)



[www.facebook.com/kappakappagamma](http://www.facebook.com/kappakappagamma)



[www.twitter.com/kappakappagamma](http://www.twitter.com/kappakappagamma)  
[www.twitter.com/thekeymag](http://www.twitter.com/thekeymag)



[www.linkedin.com](http://www.linkedin.com)  
Keyword: Kappa Kappa Gamma



<http://blog.kappa.org>

# Kappa and New York University Welcome Eta Pi

—By **LOIS CATHERMAN HEENEHAN**, *Adelphi*

**H**aving avoided the previous weekend's freak snowstorm through careful planning or just good luck, sunshine smiled on Kappa as our 138th chapter was installed at New York University on Nov. 5, 2011.

The 20 women who pledged Kappa Kappa Gamma on Sept. 7, 2011, were members of a local organization, Kappa Psi Delta. They describe themselves as quiet girls who flourished upon joining Kappa Psi Delta and they expect to continue growing as members of Kappa Kappa Gamma. Already leaders involved in many campus activities, they are focused on philanthropy. Described by others as considerate, down to earth, uniquely able to make others welcome and comfortable, poised, articulate and intelligent, with a GPA of 3.45, their values match well with those of Kappa.

Along with the 20 collegiate members, 11 alumnae of Kappa Psi Delta were initiated. Shortly before Installation, one of these women, Kelly McMahon, wrote to Director of Alumnae **SUSANNE WOLFF VANDER HEYDEN**, expressing her feelings about Kappa:

*I am a 2010 graduate of NYU. In the 2007 spring semester, I was a shy freshman, unsure of where I belonged*

*in the country's second-largest private university in the most populated city. Kappa Psi Delta welcomed me and I felt like I had a college home. I made some of my best friends and favorite memories during my three and a half years as an active sister. I worried about the future of Kappa Psi Delta as a small local sorority surrounded by flourishing national sororities in a quickly growing Greek system. When I learned my organization's plan to be absorbed by a national organization—and to only be absorbed by an organization that permitted the initiation of alumnae—I was so relieved! As corny as it sounds, I always felt there was something special about Kappa Kappa Gamma. When I was doing research as a senior about national organizations we could work with, KKG stood out to me. I look forward to being a part of such an established organization with generations of proud members.*

There are many opportunities for the new chapter on the NYU campus. Laura Osborne, College Panhellenic Adviser, said, "We have high hopes that the addition of Kappa Kappa Gamma to the College Panhellenic Council at NYU will promote stronger leadership, deeper bonds of friendship, increased awareness of service to the community and higher ideals of scholarship among all

## Recommend a Potential Member!

Eta Pi is accepting references for spring Recruitment. Download the form at [www.kappa.org/reference](http://www.kappa.org/reference). Send references to Kappa Kappa Gamma c/o Erin McCormick, 80 Lafayette St., Rm 1702C, New York, NY 10010.

Spread the word about Kappa at NYU by "liking" Kappa Kappa Gamma's NYU Facebook page and directing potential members to [Facebook.com/NYUKappas](http://Facebook.com/NYUKappas).





the members of the fraternity and sorority life community." Kappa joins Alpha Epsilon Phi, Alpha Sigma Tau, Delta Phi Epsilon, Pi Beta Phi and two local groups, with Zeta Tau Alpha also colonized in the fall, in a growing campus Panhellenic.

Fraternity President **JULIE MARINE LESHAY**, *Colorado College*, led the Installation Team of **SUSANNE WOLFF VANDER HEYDEN**, *Washington State*, Director of Alumnae; **BARB ADAMS GOETTEL**, *Syracuse*, Extension Chairman; **NANCY EYERMANN FOLAND**, *Tulsa*, and **KELLY MATYAS MAGYARICS**, *Pittsburgh*, Region 1 Directors of Alumnae and Chapters; **KIM HEINIG PEGG**, *Vermont* and **JODI BILOTTI HOWE**, *Syracuse*, Alpha Province Directors of Alumnae and Chapters; **ALEXANDRA VUKOV**, *Michigan State*, Chapter Consultant; **NICOLE PITTSINOS**, *South Carolina*, Coordinator of Chapter Development. **RACHEL DUNLAP**, *Baylor*, **NEW YORK CITY ALUMNAE ASSOCIATION** President gave a President's badge, set with light- and dark-blue stones, to the Eta Pi President, **CAITLIN GEEHAN**.

Alumna and active members of Kappa can help the new chapter by sending references for any collegiate women who might be interested in joining this new chapter at NYU.

To send greetings to Eta Pi, visit [Facebook.com/NYUKappas](https://www.facebook.com/NYUKappas) or mail to Kappa Kappa Gamma 80 Lafayette St., Rm 1702C New York, NY 10010.

# Visiting the 9/11 Memorial

—By **BARB ADAMS GOETTEL**, *Syracuse*

On Nov. 3, 2011, Fraternity President **JULIE MARINE LESHAY**, Director of Alumnae **SUSANNE WOLFF VANDER HEYDEN**, members of the Eta Pi extension team and many New York-area Kappas visited the 9/11 Memorial to honor and extend deepest respects to:

**JEAN ROGÉR**, *Penn State* flight attendant on American #11

**JEN KANE**, *Villanova* World Trade Center

**KALEEN PEZZUTI**, *Cornell* World Trade Center

**NORMA LANG STEUERLE**, *Carnegie Mellon* passenger on American #77 (Pentagon)

Fraternity President Julie Leshay brought copies of the front cover of *The Key*, winter 2001 edition, along with a copy of the article, "Honoring Those We Have Loved and Lost." These items were placed at the name of each Kappa on the memorial. **AMANDA BROWN**, Assistant to the Director of Alumnae, provided irises that were placed by each name with the article. Many 9/11 Memorial visitors stopped to read the information that our group left behind. All assembled were part of our Kappa Memorial Service led by Julie Leshay. It was a very moving experience and something we felt was important to do in connection with our new chapter at New York University.



The Kappa extension team placed an iris by each Kappa's name.



The Eta Pi extension team and area alumnae visit the 9/11 Memorial to honor the four Kappas and others lost on 9/11.



The flexibility of the Kappa Cares policy toward philanthropy choices allowed **BOULDER ALUMNAE ASSOCIATION** and the **BETA MU CHAPTER** to direct some of the funds raised in their annual Halloween House (pictured) and the association's phantom fundraiser toward the Kappas in Joplin, Mo., who suffered losses from the devastating tornadoes.

# Kappa Cares

## *Fraternity and Foundation Partnership Fosters a Culture of Giving*

—By **KELLY FOWLER NYLUND**, Virginia Tech, Fraternity Philanthropy Chairman

*During Kappa's early days, philanthropy reflected the continuing influence of 19th-century women's culture in which assisting the less fortunate and service to the community were an inherent part of women's role in society. Philanthropic efforts formally emerged as part of Kappa life in the 1890s, flourished in the early 1900s ... and became an inseparable part of Kappa life.*

—EDITH PETERSILIA MAYO, *George Washington*, from *Tradition of Leadership® Education to Enfranchisement* exhibit

Today, Kappa continues to promote a culture of giving through service and charitable efforts—however our members choose to define it. What makes Kappa unique is the freedom our members have to choose the causes in which they can make the greatest difference. Our ability to respond to the greatest needs as they arise, whether on campus, in our communities, across the continent or throughout the world, is our discernable difference.

Kappa Kappa Gamma's giving culture is greatly influenced by the four charitable and educational programs of the Kappa Kappa Gamma Foundation:

- ▶ **Education and Training:** Includes the Kappa Trainer program and Leadership Academy
- ▶ **Scholarships for initiated members:** undergraduate and graduate
- ▶ **Rose McGill Aid:** Emergency Grants, confidential assistance, Holiday Sharing
- ▶ **Museums:** The Heritage Museum at Fraternity Headquarters in Columbus, Ohio, and The Stewart House, the home of Founder Minnie Stewart, in Monmouth, Ill.



Established in 1989, the Kappa Kappa Gamma Foundation touches the lives of our members in many ways. Members who have received a scholarship, participated in a Kappa Learning Institute training program or *Pathways* workshop, received financial aid, or visited one of Kappa's museums all have experienced the generosity of Kappa's Foundation.

Chapters and associations are encouraged and expected to donate a *portion* of their fundraising proceeds to the Foundation to support these causes.

Kappas also are encouraged to serve in their communities by promoting children's literacy. Kappa has a commitment to children's literacy through our philanthropic partner, Reading Is Fundamental (RIF). RIF motivates children to read by working with them, their parents and community members to make reading a fun and beneficial part of everyday life. RIF's highest priority is reaching underserved children from birth to age 8.

Through fundraising and service projects, our chapters and associations also give to more than 100 local causes, from feeding the hungry to raising funds for cancer research and women's shelters. Chapters and associations have longstanding relationships and personal connections with these causes, and we ask that our members continue this tradition of giving on the local level.

We applaud the giving efforts of our chapters and associations as they respond to needs in their communities. Wouldn't our Founders be proud!



## Welcome New Associations

For more information about these new associations, email the association President at the address below.

### Frisco, Texas

JULIA SCHICK JOHNSON, *Baylor*  
Juliaajohnson1088@gmail.com

### Saline County, Ark.

ALLISON BROUGHTON RAMSEY,  
*Arkansas*  
allison.ramsey@staffmark.com

### Snake River

PAMELA SCRANTON HILL, *Alabama*  
pam.hill@me.com

### Quad-Cities, Iowa

RACHEL EVANS, *Valparaiso*  
mighty Rachel@gmail.com

<http://kappag.ahitravel.com>



## Join the Fun!

### Explore with Kappa Travels

#### Jewels of Antiquity Cruise

May 25–June 9 **\$4,595\***

#### Rhone River

May 19–27 **\$2,795**

#### Waterways of Russia

July 4–17 **\$3,895**

#### Discover Switzerland

July 25–Aug. 9 **\$3,695**

#### Italy's Lake District

Sept. 25–Oct. 3 **\$2,995**

#### China and the Yangtze River

Oct. 8–21 **\$3,795**

#### East Africa

Oct. 22–Nov. 5 **\$5,895**

*All trips include an expert trip director and local guides. Most meals and excursions are included, as well as tips for the trip director, local guides and bus drivers. Airfare and taxes are separate. Detailed trip information is available at <http://kappag.ahitravel.com> under the "Journeys" and "Destinations" tabs.*

*\*Jewels of Antiquity Cruise includes airfare from U.S. gateway cities.*

For more information, contact DALE BRUBECK, William and Mary, Kappa Travels Coordinator, at 614-888-0685 or [dbrubeck@columbus.rr.com](mailto:dbrubeck@columbus.rr.com) or call Alumni Holidays Travel (AHI) **800-323-7373**. Family and friends are welcome on all Kappa Travels trips.  
<http://kappag.ahitravel.com>

*Marye-Kelley*  
EST. 1991

BEAUTIFUL WASTEPAPER BASKETS & TISSUE BOXES

OVER 400 DESIGNS  
TO CHOOSE FROM

[WWW.MARYE-KELLEY.COM](http://WWW.MARYE-KELLEY.COM)  
*We are Kappa owned and operated.*



# WANTED

## A Few Good Leaders for the 2012-2014 Biennium

**Mission:** Lead Kappa Kappa Gamma Fraternity

**Qualifications:** Any Kappa in good standing who has served the Fraternity within the past 10 years as a member of the Fraternity, Regional or Associate Council, chairman of a Fraternity standing or special committee, Fraternity Council assistant, Leadership Consultant or member of the Foundation Board of Trustees is qualified to be considered for an elected position.


**Opportunities:** The positions to be elected at the 2012 General Convention include all Fraternity Council positions, seven Regional Director of Alumnae positions and seven Regional Director of Chapters positions.

**Procedure:** Please submit recommendations to the Nominating Committee no later than Feb. 15, 2012.

Find the recommendation form at [www.kappa.org](http://www.kappa.org)>Resources>Nominations & Recommendation Forms>Recommendation for Fraternity Position.

Send recommendations to Fraternity Nominating Chairman, **JUDY STEWART DUCATE**, *Texas Tech*, 7012 Brook Forest Cir., Plano, TX 75024-7535 or email [jducate@augustagroup.org](mailto:jducate@augustagroup.org).

Every member has the opportunity to participate in the nominating process. Please consider seeking one of these positions or nominating an outstanding leader you know.



The strength of Kappa Kappa Gamma can be attributed to the leaders of our Fraternity during the past 141 years. Their vision, wisdom and courage have made Kappa the exceptional organization that we all know and love. We need you to be a part of continuing that Tradition of Leadership by recommending qualified candidates for elected positions.

**Who will lead the Fraternity in the next biennium?**

# YOU ARE THE KEY!



# In Memoriam

## Honoring Those We Have Loved and Lost

*These names were submitted to Fraternity Headquarters between July 21 and Oct. 31, 2011.*

### \* ADELPHI COLLEGE

Schubert, Marcia Kuhlke, '49, d. 09/11

### \* ADRIAN COLLEGE

Godfrey, Reva Neller, '39, d. 08/11

### AKRON, UNIVERSITY OF

Breckenridge, Judy Ellis, '55, d. 03/11

Griesinger, Dorothy, '41, d. 10/08

Hertel, Dale Hinton, '41, d. 10/11

Ryan, Lynne Teel, '61, d. 09/11

### ALABAMA, UNIVERSITY OF

Davis, Peggy Dessert, '70, d. 07/11

Hudson, Peggy Rogers, '44, d. 12/09

Rauschenbach, Beverley Candler, '40, d. 10/11

### ALLEGHENY COLLEGE

Murray, Laurie MacArthur, '53, d. 07/11

### ARIZONA, UNIVERSITY OF

Bartley, Diana, '44, d. 07/11

Murison, Sally Starr, '64, d. 12/10

Propstra, Suzanne Price, '42, d. 07/11

### ARKANSAS, UNIVERSITY OF

Bullard, Betty Causey, '51, d. 09/11

Carter, Joyce McKinney, '43, d. 09/11

Fitzhugh-Ellis, Camille Waldron, '38, d. 08/11

Hackworth, Virginia Nowell, '53, d. 09/11

Little, Earlene Upchurch, '36, d. 12/09

Price, Corinne Beasley, '36, d. 01/02

Richardson, Reube Shaw, '41, d. 08/11

Williams, Jean Cox, '54, d. 09/11

### AUBURN UNIVERSITY

Scorey, Donna Pearce, '72, d. 09/11

### \* BOSTON UNIVERSITY

Coughlan, Philippa Mathieu, '53, d. 03/11

### BRITISH COLUMBIA, UNIV. OF

Vourvoulas, Diana Milsom, '47, d. 10/11

### BUTLER UNIVERSITY

Adams, Regenia Funderburg, '33, d. 08/11

Cundiff, Mary Fritsche, '47, d. 10/10

Gerhart, Alice Jones, '50, d. 10/11

Gifford, Nancy Novak, '46, d. 08/11

Hughes, Mary Sue Weisner, '54, d. 07/11

Nie, Elizabeth Kenney, '65, d. 08/11

Reid, Donna Spring, '55, d. 08/11

### CALIFORNIA, U. OF, BERKELEY

McKnight, Joan Kiessig, '49, d. 10/11

Ott, Patricia Parrish, '39, d. 08/11

Rawn, Betsy Blanckenburg, '39, d. 08/11

### CALIFORNIA, U. OF, LOS ANGELES

Barry, Joscelyn Pyne, '43, d. 08/11

Hester, Rose, '55, d. 04/11

Horn, Kae Ebert, '54, d. 07/09

### COLORADO COLLEGE

Duncan, Martha Bliss, '42, d. 09/11

Hees, Betty Bell, '47, d. 03/11

Maguire, Mary Jones, '39, d. 04/09

Smith, Mary Hedrick, '58, d. 02/11

Winser, Jeanne Collisson, '36, d. 04/06

### COLORADO, UNIVERSITY OF

Maxson, Patricia, '66, d. 07/11

Quest, Plattie Platt, '40, d. 10/11

Steele, Patricia White, '44, d. 10/11

Stiffler, Dorothy Northcutt, '36, d. 09/11

### CONNECTICUT, UNIVERSITY OF

Cotjanle, Evelyn Ward, '50, d. 09/11

Krantz, Elizabeth Durkee, '57, d. 09/11

West, Elizabeth Nixon, '42, d. 10/10

### CORNELL UNIVERSITY

Daniel, Constance Page, '28, d. 10/11

Davis, Ruth Howell, '37, d. 10/07

Forthoffer, Mary Rowley, '49, d. 06/11

Haughwout, Carol Cleveland, '45, d. 08/06

Herron, Joanne, '61, d. 02/11

Nikolaieff, Rosalind Mills, '60, d. 05/02

### DENISON UNIVERSITY

Baer, Patricia Wood, '42, d. 12/10

Carey, Suzanne Gosser, '49, d. 05/10

Jaeger, Helen Keil, '36, d. 12/10

Jensen, Ruth Darrow, '31, d. 06/11

Netherton, Suzy Ruppert, '57, d. 09/11

Petrequin, Margaret Morton, '44, d. 10/11

Schott, Jane Shafer, '58, d. 03/11

### DEPAUW UNIVERSITY

Bigley, Carol Holmes, '57, d. 09/11

Luljak, Jane Noble, '43, d. 06/11

Sillesen, Barbara Bradshaw, '45, d. 08/11

Stark, Barbara Jones, '41, d. 09/11

### DRAKE UNIVERSITY

Ebert, Eunice Black, '27, d. 11/98

Edgington, Jane Palmer, '30, d. 08/11

Holmberg, Susan Wright, '50, d. 04/11

Kane, Lois Meyer, '44, d. 10/10

Manning, Margaret Carris, '43, d. 10/11

Pugh, Dorothy Dobberteen, '44, d. 09/11

Strasser, Elizabeth Hoffman, '37, d. 08/11

### FLORIDA STATE UNIVERSITY

Stegall, Frances Rivers, '67, d. 09/11

Tucker, Laura Bunte, '63, d. 08/11

### GEORGE WASHINGTON UNIVERSITY

Dunbar, Lala Mathers, '51, d. 08/11

O'Brien, Nancy Henderson, '46, d. 08/08

### GEORGIA, UNIVERSITY OF

Lucado, Corneille Rylander, '49, d. 08/11

### HILLSDALE COLLEGE

Anderson, Margo Salsbury, '58, d. 11/07

### IDAHO, UNIVERSITY OF

Bartlett, Sue Livingston, '58, d. 10/11

Freestone, Jan Lawrence, '73, d. 09/11

St. Clair, Jane Baker, '34, d. 08/11

### ILLINOIS WESLEYAN UNIVERSITY

Regehr, Elaine Yontz, '46, d. 02/11

Wolf, Edythe Lippert, '55, d. 07/08

### ILLINOIS, UNIVERSITY OF

Radecki, Betty Amdal, '40, d. 10/11

Truitt, Jane Bass, '36, d. 12/04

Witters, Elizabeth Lloyd, '56, d. 08/11

### INDIANA UNIVERSITY

Kuehn, Ruth, '41, d. 08/11

Phillippi, Barbara Caniff, '47, d. 06/04

### IOWA STATE UNIVERSITY

Barker, Virginia McIntyre, '53, d. 09/06

### IOWA, UNIVERSITY OF

Avery, Barbara, '36, d. 08/11

Miller, Ruth Smith, '40, d. 10/11

### KANSAS STATE UNIVERSITY

Hartwell, Nancy Hunt, '46, d. 10/11

O'Neil, Ann Dillingham, '67, d. 08/11

Sherwood, Hazel Scott, '37, d. 02/11

Stolzer, Eleanor Griffith, '54, d. 10/11

### KANSAS, UNIVERSITY OF

Dicus, Barbara Bubb, '53, d. 07/11

Holmgren, Frances Nordlund, '35, d. 09/11

Kraft, Patricia Kirk, '51, d. 7/11

Murray, Kathleen McKelvy, '47, d. 10/11

### KENTUCKY, UNIVERSITY OF

Conner, Lillian Webb, '36, d. 09/11

Givens, Lida Ingels, '47, d. 08/11

Van Meter, Rebecca, '29, d. 09/11

### LOUISIANA STATE UNIVERSITY

Camors, Lorraine Bourgeois, '40, d. 09/11

Carruth, Mary Clare Lansden, '38, d. 04/11

Hathorn, Isabel Voelker, '42, d. 10/03

Howe, Anne Grayson, '38, d. 08/11

Lewis, Charlotte Corrigan, '81, d. 09/11

### \* MANITOBA, UNIVERSITY OF

Dunn, Ada Roe, '41, d. 09/11

### \* MARYLAND, UNIVERSITY OF

Emmerich, Charlotte Dorsey, '43, d. 10/09

Jarboe, Mary Bohanan, '40, d. 06/11

Lanning, Wendy Sims, '66, d. 09/11

Mills, Marjorie Groves, '46, d. 01/04

Mislisky, Dorothy Anderson, '43, d. 03/00

Shields, Joan Rodgers, '41, d. 08/11

### MASSACHUSETTS, UNIVERSITY OF

Griswold, Nancy Hoffman, '49, d. 10/10

### MCGILL UNIVERSITY

Capreol, Jean Scott, '44, d. 10/11

### MIAMI UNIVERSITY

Preble, Sally Creswell, '56, d. 08/11

### MIAMI, UNIVERSITY OF

Bates, Ethel Engelland, '53, d. 03/96

### MICHIGAN STATE UNIVERSITY

Drake, Martha Gower, '36, d. 05/11

Pritchard, Mary Sanford, '36, d. 11/99

Rouse, Dorothy Smith, '34, d. 05/11

Sass, Jennifer Bement, '61, d. 08/11

Walker, Carolyn French, '45, d. 04/11

Wood, Marilyn Smith, '44, d. 08/11

### MICHIGAN, UNIVERSITY OF

Coddington, Elizabeth Mandel, '38, d. 05/11

McCoy, Pauline Bowe, '29, d. 11/02

Rees, MaryElizabeth Newton, '50, d. 01/11

### \* MIDDLEBURY COLLEGE

Eakeley, Lenore Wolff, '40, d. 08/11

### MINNESOTA, UNIVERSITY OF

Atwell, Elizabeth Fugina, '35, d. 08/11

Crabb, Catherine Boucher, '36, d. 10/10

Hellekson, Adelaide Salmon, '36, d. 07/06

Worthing, Patricia Westlake, '34, d. 09/11

### MISSISSIPPI, UNIVERSITY OF

Covert, Patricia Davidson, '47, d. 07/11

McIntock, Kitty Bailey, '48, d. 10/11

Rhodes, Nona Parker, '59, d. 07/11

### MISSOURI, UNIVERSITY OF

Diekneite, Jeanne Heins, '50, d. 06/08

Hardy, Eleanor Kincaid, '37, d. 07/11

Hunter, Virginia Ricker, '44, d. 09/11

St. Clair, Jane Elfred, '36, d. 12/10

Wallace, Lucille Lewis, '46, d. 05/10

### MONMOUTH COLLEGE

Matchett, Louise Cummins, '39, d. 03/11

Roersch, Elizabeth Glas, '46, d. 08/11

Tippy, Nancy Miller, '60, d. 08/11

### MONTANA, UNIVERSITY OF

Bergsing, Patricia Woodcock, '52, d. 12/10

Johnson, June Bowman, '56, d. 09/11

Kallgren, Ann Evans, '49, d. 03/11

Slater, Cordelia Brown, '60, d. 10/11

### NEBRASKA, UNIVERSITY OF

Heffelfinger, Alice Christiansen, '46, d. 09/11

Rogers, Eleanor Buddig, '28, d. 10/11

Sunderland, Nancy Hawkins, '54, d. 08/11

Whitford, Genevieve Smith, '33, d. 07/11

### NORTHWESTERN UNIVERSITY

Combs, Virginia Beardsley, '49, d. 08/11

James, Marcia Noyes, '54, d. 07/11

Joiner, Winifred Roberts, '47, d. 08/11

### OHIO STATE UNIVERSITY

Abel, Marion Fisher, '48, d. 10/11

Gage, Janet Stewart, '50, d. 10/11

Laurisky, Kathleen Fouse, '61, d. 03/11

### OHIO WESLEYAN UNIVERSITY

Cunningham, Barbara Lynch, '36, d. 01/11

Long, Marjorie Middleton, '45, d. 09/11

McDonald, Dorothy Gilroy, '34, d. 10/11

Palmatier, Virginia Leland, '33, d. 03/11

### OKLAHOMA STATE UNIVERSITY

Askin, Patricia Neale, '49, d. 08/94

Cary, Patricia Hair, '48, d. 07/11

Edwards, Mary Frances, '66, d. 09/11

### OKLAHOMA, UNIVERSITY OF

Boyle, Dolores Stephens, '41, d. 08/11

Dwyer, Nancy Darrough, '54, d. 10/11

McDonald, Patricia Dickenson, '48, d. 08/11

Sallee, Mary Mayginnnes, '36, d. 03/03

### OREGON STATE UNIVERSITY

Howland, Margaret Snyder, '44, d. 08/11

Mink, Catherine Root, '67, d. 10/11

Pierce, Virginia Potter, '50, d. 08/11

### OREGON, UNIVERSITY OF

Butler, Mae Hoover, '38, d. 03/10

Cutler, Claire Demmer, '43, d. 08/11



# Holiday Time Is Giving Time

The holidays mean so much—spending time with friends and family, festive parties with plenty of food, and time to reflect and give thanks. We take time to acknowledge the people of service in our life—teachers, mail deliverers, hairstylists—but what about our sisters? Kappa Kappa Gamma is not only an organization, but a family, one that has lasted almost a century and a half, with hundreds of thousands of sisters who each share a special family tie. Just as our biological family comes to our aid when we need it most, Kappa does the same for any sister in need—through Rose McGill Confidential Aid.

The Rose McGill Holiday Sharing Program helps sisters in need during the holidays, when money always seems to be tightest. How does it work? Applicants provide a wish list and donors shop, wrap and mail the gifts. Alumnae associations, chapters and individuals may apply to be assigned a sister in need. This process starts in March when previous and potential donors are contacted and agree to participate. Donors then receive a short biography and wish list in September and gifts, totaling \$250 or less, are mailed early in December. Applicants are members of the Rose McGill family and all names are kept confidential. Those who receive gifts write touching and heartfelt notes of appreciation. The holidays are truly a time of caring and giving.

To learn more about the Holiday Sharing program, visit [www.kappa.org/foundation](http://www.kappa.org/foundation), and click on Rose McGill.





Dear Kappa Sisters,

*I wish I could take a walk with each of you in my most comfortable shoes. On our walk, I would thank you for your generosity and share stories of the many Kappas who have been helped—and the ones who still need assistance. In the annual report that follows, you will discover how the Foundation, through the generous donations from Kappas and friends, has helped members in need, provided scholarships to members seeking to complete or further their education, brought educational programs to all generations of Kappas, and responded with a helping hand during natural disasters. And we have continued to open the doors of our beautiful museums to the public and bring women's history to life for thousands of visitors each year.*

*An annual report must provide numbers and statistics, but at the heart of it are stories—stories that reflect upon women who were helped through trying times, who celebrated accomplishments and overcame challenges. We selected a few stories to share, but there are many more stories yet to be told.*

*This year, insurmountable challenges were faced with the loving and determined strength of our sisterhood. When **SHELLEN RYAN RHODEN**, Texas Tech, was battling ALS, her **DELTA PSI** sisters and Rose McGill Confidential Aid provided TLC as well as necessities that were beyond the scope of insurance. When Shellen became physically incapacitated, her Kappa friends stepped in to take care of the things most important to Shellen, like college visits for her teen daughter.*

*When I hear these stories, I am so proud to be a Kappa because I am part of an organization that has no limit for caring and sharing. Letters from scholarship recipients reflect the significance of your efforts to assist our undergraduates and graduates to stay in school and achieve their dreams despite many odds. I hope some day we can give many more scholarships.*

*This fiscal year is well under way, and the Kappa Foundation and Fraternity are collaborating to encourage the culture of giving that is inherent in our donors. I continue to be amazed by the generosity of so many Kappas. We are almost halfway to our goal of receiving gifts from 10,000 members. Thank you for your continual support!*

*And when our one-mile walk is complete, I would say, **THANK YOU** for sharing our mutual love for Kappa Kappa Gamma and for helping bring solace to one another.*

Loyally,



KAY REID TENNISON, Arizona State  
Foundation President



## Foundation Board of Trustees

KAY REID TENNISON  
Arizona State, President  
kaytennison@aol.com

CINDY BENNETT JARBOE  
William and Mary, Treasurer  
cindysskkg@aol.com

KAY SCHOLBERG WEEKS  
Bucknell, Development Chairman  
kayweeks@ebby.com

JILL EVERSOLE NOLAN  
Ohio State,  
Financial Assistance Chairman  
nolan.2@osu.edu

JULIE MARTIN MANGIS  
George Washington,  
Museums Chairman  
jmmangis@aol.com

KELLY COX BILEK  
TCU, Trustee  
kbilek@bileklaw.com

PAT MCINNIS COOPER  
Mississippi, Trustee  
pcooper@ccias.com

JULIE MARINE LESHAY  
Colorado College, Trustee  
kkgpresident@my.kkg.org

MITCH HIETT PFLUGH  
Colorado, Trustee  
mitchindenver@yahoo.com

COLLETT BEERS RANGITSCH  
Wyoming, Trustee  
kkgdc1870@gmail.com

BETH SHARP  
Penn State, Trustee  
bsharp@aerosoles.com

SUSANNE WOLFF VANDER HEYDEN  
Washington State, Trustee  
svanderhe@aol.com

**{phi-lan-thro-pist: noun; 1. One who actively promotes human well-being. 2. You.}**

*You are **OUR** philanthropist ... and we thank you! Whether you have been a longtime supporter or would like to make your first gift, we look forward to you being part of our vision to be at the forefront of **advancing inspired women leaders.***

✿ **Did you know?** You are one of more than 244,000 Kappas who have experienced the joys and opportunities that membership in Kappa Kappa Gamma has to offer. The generosity of your gifts makes it possible for the Foundation to continue to enhance the lives of Kappa sisters.

✿ **Help us do something special!** We are striving this fiscal year (2011-12) to increase our number of annual donors to 10,000. Think of it as 10,000 strong—Kappa strong. So far, more than 4,000 Kappas have accepted the challenge. We hope you will be next!

***Be one of our 10,000 philanthropists by making your annual gift before June 30, 2012!***

**Ways to participate:**

1. Use the enclosed gift envelope.
2. Make your gift online, [www.kappa.org/foundation](http://www.kappa.org/foundation).
3. Respond to your next Annual Loyalty Fund mailing.
4. Follow our progress on Facebook ([www.facebook.com/kappafoundation](http://www.facebook.com/kappafoundation)) and Twitter ([www.twitter.com/KKGFoundation](http://www.twitter.com/KKGFoundation)).

## **Annual Donor Lists Online**

*The annual list of Kappa Kappa Gamma Foundation donors is available to members online at [www.kappa.org](http://www.kappa.org). Nonmembers may contact the Foundation for this information at 866-554-1870.*



# When Planning Your Estate, Consider Your Values

—By **MAGGIE SIMS COONS**, *Hillsdale*, Director of Planned Giving

Photo by: Fred Fray Photography



**MELISSE CAMPBELL**, *Mississippi*

“One of the most important skills I took away from college and Kappa is the ability to manage my time,” says **MELISSE CAMPBELL**, *Mississippi*.

Melisse currently balances her time working in her family’s antique art business and as a photographer and painter, and Kappa volunteer. Based in Baton Rouge, she enjoys developing her creative range through landscape, architectural and documentary photography.

From her time at Ole Miss to her volunteer roles as an alumna, Melisse has developed a support system of Kappa friends. Coming from a Panhellenic background, Melisse went into Recruitment knowing she wanted to be a part of a strong international group. Finding a fit at Kappa, Melisse says it “provided me with the opportunity to develop time-management skills by serving my chapter as Panhellenic Delegate, assistant Vice President-Organization and PR Chairman.”

After earning a bachelor’s in history and Southern studies from Mississippi, she went on to earn a master’s degree in mass communication from LSU. An active Kappa volunteer, Melisse has served as the President of the **BATON ROUGE ALUMNAE ASSOCIATION**, Province Director of Alumnae for Xi East and currently is on the editorial board of *The Key*.

Melisse said that reading President **JULIE MARINE LESHAY**’s article in *The Key* made her think about her own estate planning. Melisse had always thought it was something she would do when she was older. But, when she was the executrix for her two grandparents in one year, she started thinking differently. “I realized that I need to choose where my money goes so I can make a difference,” says Melisse. “I have designated a portion of my estate to the museums and a portion for use by the **DELTA RHO CHAPTER** at Ole Miss. This plan reflects my interests.

“Since each estate and state is different, it is important to work with an attorney. In making your plan, you need to think about your values, where your best memories in life have come from and what you want to support moving forward,” Melisse says. “Whatever the size of your estate, you do not want it to be tied up in unnecessary paperwork and subject to federal rulings.

“I am happy with my estate planning at this time. I also know that I need to review my plan annually and at the time of any life-changing event. I do know that I will always include the Kappa Kappa Gamma Foundation because Kappa shares my values,” Melisse said. “Some of my best memories come from Kappa and I want to keep Kappa strong long into the future.”

## Thank You, Omega Society!

Thank you to the 295 Kappas who have joined the Omega Society by creating a bequest provision in a will or trust, a charitable gift annuity, a charitable remainder trust, a charitable lead trust or by naming the Foundation as the owner and beneficiary of a life insurance policy or as the beneficiary of a qualified retirement plan such as an IRA or 401(k).

To find out more about your planned giving options, please contact **MAGGIE SIMS COONS**, *Hillsdale*, Director of Planned Giving, Kappa Kappa Gamma Foundation, P.O.Box 38, Columbus, OH 43216-0038; 866-KKG-1870, ext. 2117 (toll free); [mcoons@kkg.org](mailto:mcoons@kkg.org) or [www.kappa.org/plannedgiving](http://www.kappa.org/plannedgiving).

(EIN #31-6049792)

# Iris Circle

## Iris Circle Society Members

from 7/1/10 to 6/30/11

*The Iris Circle is the Kappa Kappa Gamma Foundation's annual giving society, recognizing donors who make an unrestricted gift of \$1,000 or more each fiscal year. The Iris Circle was established through the Annual Loyalty Fund to honor those who entrust the Foundation with their unrestricted generosity.*

Barbara Merinoff Albert	Mollie Villeret Davis	Marianne Schildmeyer Klekamp	Cherry Moslander Ridges
Karen Keck Albin	Mary Dell Kirksey Dodson	Nancy Clauson Kraut	Tiana Fowler Ronstadt
Ann Alspaugh	Sylvia Faubion Dodson	Katie Smith Lambert	Ellen Lembke Ryan
Judith Hart Angelo	Lora Lee Buchanan Duncan	Mary Siler Larson	Shirley Welsh Ryan
Christine Armstrong	Bonnie Snyder Earp	Fay Sims Lathrop	Judy Schaper Sanders
Pauline VanHaaren Bach	Lacey Ebbert	Marcia Wood Lea	Rosemary Stubblefield Schertz
Patti Poundstone Badham	Janet Jackson Egert	Jan Hilgenfeld Leaman	Theiline Pigott Scheumann
Janet Crawford Baines	Lindsay Slack Fairman	Jane Sugden Martinovich	Priscilla Slabaugh Schultz
Ann Mammel Balusek	Holly Messmer Fraleigh	Margaret Edwards Mason	Molly McKinney Schulze
Faith Bailey Barcroft	Doris Horslund Fritcher	Pamela Wilson Massey	Nancy Elder Schwan
Barbara Bowers Bard	Janet Hahn Fuquay	Gay Watkins Mathewson	Cynthia Stewart Simon
Kate Ginsbach Barlow	Michele Tedford Garren	Betsy Clifton McClendon	Linda Hervey Simpson
Jannie Thomas Barron	Lou Mosier Gaudin	Suzie Moffitt McDonald	Debby Heaberlin Smith
Janet Ream Bauer	Ginger Geoffrey	Cathleen Morrow McKinney	Patty Payne Smith
Nancy Davidson Beaham	Melissa Ulrey Gill	Jean Naslund McLaughlin	Sandee Hill Smith
Nancy Williams Beale	Mary Sterner Giordano	Sherry Noland McManus	Saranne Guy Smith
Marion Boyd Benell	Karen Kolbe Goodenow	Margaret Marsh Mebus	Lillian Melko Spangler
Pamela Benitez	Sally Ives Gore	Margaux Merriman	Audrey McIntyre Spiegel
Mary Fair Berglund	Sandra Diepenbrock Grady	Rita Shepherd Mesec	Joan Zieg Steinbrenner
Kelly Cox Bilek	Bonnie Norton Graff	Rory Mangeri Meyers	Cynthia Dabney Stevens M.D.
Laurie Sharrock Billing	Diane Finch Grant	Katie Crider Miller	Patricia Miller Stichnoth
Marjorie McKee Blanchard	Joan Frazier Greene	Kathy Miller	Mary Louise Villeret Stites
Betsy Cullum Bolin	Janet Scudder Grisemer	Sally Ross Moores	Emily Johnson Stolz
Cynthia Breen	Sally Iredele Gulick	Kerrie Quinn Murray	Karen Tellepsen
Joni Manos Brown	Doug Kelley Hall	Carol Champer Murrel	Kay Reid Tennisson
Judith Schaepe Brubaker	Margaret Eccleston Halvorson	Barbara Koval Nelson	Jean Marie Thomas
Cece Neef Brune	Nancy Frumkin Hamburger	Kris Bretz Nichols	Becky Robbins Tilden
Diane DeGarmo Bruton	Teri VanDorn Hampson	Mary Davis Nichols	Logan Krogh Tootell
Natalie Henkes Buckthal	JoAnne Kraus Hansen	Rebecca Strickland Orfila	Kathleen Hommel Trott
Anne Blalock Bunten	Sheryll Barnes Harkins	Olivia Fisher Orr	Ann Stafford Truesdell
Marilyn Baldacci Burchard	Lou Alexander Helman	Maureen Orth	Cheryl Viar Upchurch
Janice Jamison Burg	Claire Schlumberger Henry	Ellen Kirkpatrick Olson	Katherine Scholberg Weeks
Luellen Demoise Charneski	Nancy Jumper Herde	Judy Kieffer Olson	Nancy Scott Weinert
Helen Chatfield	Nancy Herring	Centes Morrill Papes	Sheryl Welsh
Dody Teets Clark	Jean Smith Higgins	Roxelyn Miller Pepper	Nancy Vandenburg Westcott
Patricia Wright Cochran	Mary Hart Hirshfield	Anna Mitchell Hiatt Pflugh	Carolyn Seely Wiener
Susan Buden Colvin	Patti Guest Horne	Lynne Sparks Pickard	Beth Bronson Wiggins
Marj Matson Converse	Holly Hartwell Huffines	Helen Powell Pierson	Frances Engle Wilson
Dierdre Goorman Cook	Carolyn Gillett Jelks	Janet Simmons Pillsbury	Alexa Isbell Wolman
Pat McInnis Cooper	Jane John Jenkins	Jayne Harper Plank	Rosalyn Kempton Wood
Carolyn Varin Copeland	Ann McArron Jones	Jean Urse Popoff	Nancy Upjohn Woodworth
Geraldine Williamson Cramblit	Jane Carter Jones	Jane Dongus Rainier	Joan Hennessy Wright
Kellye White Crawford	Marilyn Dow Jones	Lillian Spang Rath	Diane Harrison Zent
Joanne Strauss Crown	Marsha Jordan	Isla Carroll Reckling	Gail Gardner Zmyslowski
Deborah Collins Cunningham	Barbara Tabbert Kildow	Louella Hodges Reese	



# 2010-2011 Foundation Financial Report

## Summarized Financial Data for Kappa Kappa Gamma Foundation

for years ended June 20, 2010 and 2011 \*

### STATEMENTS OF FINANCIAL POSITION

Assets	2011	2010
Cash and Cash Equivalents	\$2,920,285	\$1,509,780
Pledges and Accounts Receivable	\$922,471	\$1,558,546
Property and Equipment, Net	\$883,828	\$958,510
Investments	\$31,727,439	\$26,955,551
Other Assets	\$122,573	\$116,243
<b>Total Assets</b>	<b>\$36,576,596</b>	<b>\$31,098,630</b>

### Liabilities and Net Assets

Accounts Payable and Other Accrued Expenses	\$249,148	\$253,800
Charitable Gift Annuities	\$28,093	\$28,355
<b>Total Liabilities</b>	<b>\$277,241</b>	<b>\$282,155</b>
<b>Total Net Assets</b>	<b>\$36,299,355</b>	<b>\$30,816,475</b>
<b>Total Liabilities and Net Assets</b>	<b>\$36,576,596</b>	<b>\$31,098,630</b>

### STATEMENT OF ACTIVITIES

Revenues	2011	2010
Gifts and Bequests	\$3,003,461	\$2,266,472
Net Investment Income	\$4,716,479	\$2,704,540
Rental and Other Income	\$82,103	\$85,737
<b>Total Support and Revenues</b>	<b>\$7,802,043</b>	<b>\$5,056,749</b>

### Expenses

Program Services	\$1,333,695	\$1,399,760
Management and General	\$283,066	\$303,557
Fundraising	\$702,402	\$655,697
<b>Total Expenses</b>	<b>\$2,319,163</b>	<b>\$2,359,014</b>
<b>Net Assets, Beginning of Year</b>	<b>\$30,816,475</b>	<b>\$28,118,740</b>
<b>Change in Net Assets</b>	<b>\$5,482,880</b>	<b>\$2,697,735</b>
<b>Net Assets, End of Year</b>	<b>\$36,299,355</b>	<b>\$30,816,475</b>

\* The above financial data were derived from financial statements audited by Crowe Horwath and Company, LLC, which are available on request.

*The Kappa Kappa Gamma Foundation thanks associations and chapters for your support. The following gifts were received between Aug. 26 and Nov. 22, 2011.*

### Chapters Gave \$4,718\*

Beta Pi, Washington  
Beta Rho,<sup>A</sup> Cincinnati  
Delta Pi, Tulsa  
Delta Psi, Texas Tech  
Delta Upsilon, Georgia  
Eta Eta, Central Florida  
Eta Xi, UC Merced

### Alumnae Associations Gave \$9,541\*

Arcadia  
Asheville  
Austin  
Brevard County  
Champaign-Urbana  
Clearwater Bay  
Desert  
Detroit East Suburban  
Door County  
Down East Maine  
East Lake-Porter County  
Erie County  
Glendale-Burbank  
Hawaii  
Hilton Head  
Hutchinson  
Iowa City  
Lancaster  
Lubbock  
Missoula  
Monterey County  
Northern New Jersey  
Oak Park-River Forest  
Rochester, Minn.  
Salem  
Santa Cruz County  
Seattle  
The Golden Key  
Toledo

\*Combined totals.

# Summary of the Foundation's 2010

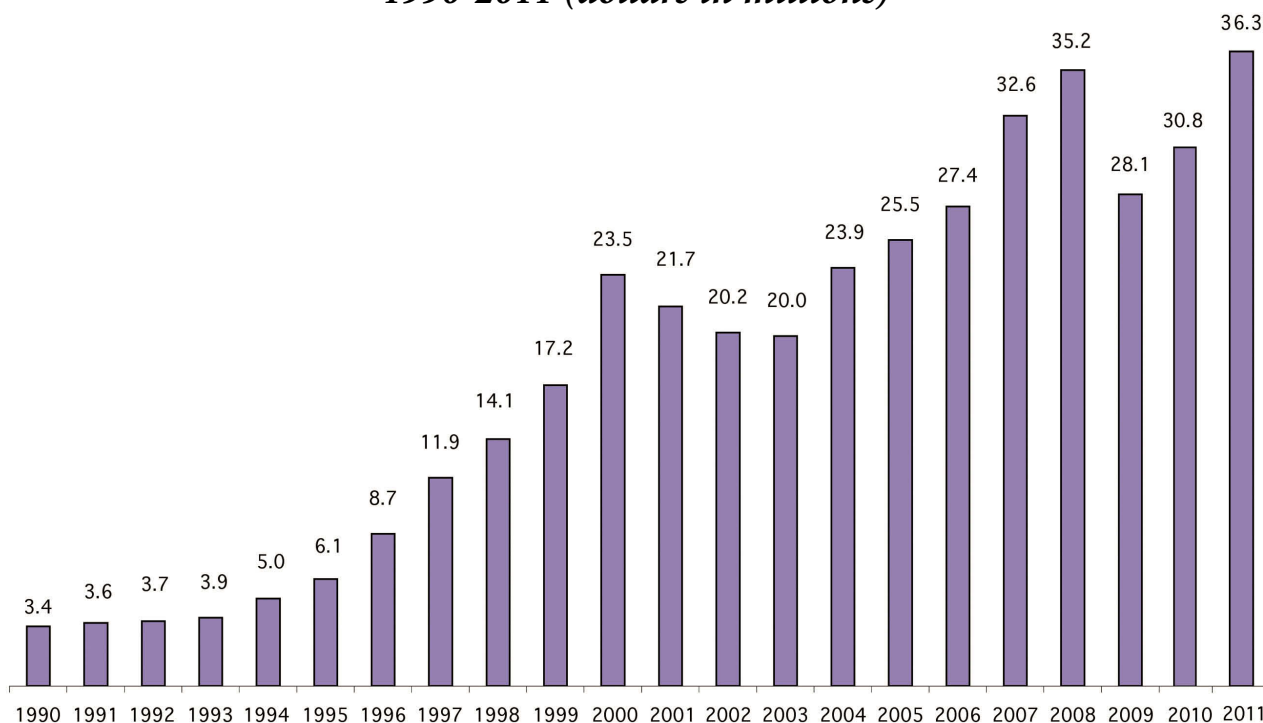
Despite a challenging economic environment, the Kappa Kappa Gamma Foundation's net assets reached \$36.3 million at June 30, 2011, the highest level in its 21-year history and an increase of \$5.5 million. The most significant reason for the increase was the investment performance, which produced a total return of \$4.7 million or 18.3 percent. Total revenues were \$7.8 million—an increase of \$2.7 million. Total expenses were \$2.3 million, consistent with the prior year.

Unrestricted Annual Loyalty Fund and general giving in total are consistent with the prior year. The Foundation received generous unrestricted bequests and increased gifts from the appeal to parents. We also experienced increased giving

to Rose McGill Confidential Aid and named scholarships. However, restricted gifts were down compared to the prior year due to the significant restricted gifts in the prior year for the Leadership Academy Endowment Campaign.

Investment results were strong due to improved performance in the financial markets and the value added by our diversified asset allocation to a variety of investment managers in a variety of asset classes. The Foundation's disciplined investment strategy, combined with a 4.25-percent spending-rate policy, continues to support operations and programs in the best of times and in more volatile times. Because the Foundation's spending policy is based on a trailing three-year-average market value, the

***Growth in Kappa Kappa Gamma  
Foundation Net Assets  
1990-2011 (dollars in millions)***





# –2011 Financial Results

impact of the 2008–2009 downturn in the markets resulted in program spending declining only slightly in fiscal year 2011. The addition of one employee focused on undergraduate giving caused an offsetting increase in fundraising expenses. Other cost-containment efforts kept overall expenses in line with the prior year without significant reductions in the level of services and programs provided.

New activity in 2011 included assisting several local chapter house corporations with significant fundraising campaigns for the educational portions of their house renovations. Funds are donated to the Foundation as tax-deductible contributions and then provided to the house corporations as educational area grants to add educational facilities in the house.

## About the Foundation

- The Kappa Kappa Gamma Foundation is a section 501(c)(3) nonprofit corporation incorporated in the state of Ohio.
- Contributions to the Foundation are tax deductible as charitable contributions as provided by law.

## Best Practices for Fraternal Foundations

Cygnus Applied Research, Inc. was engaged by NICF to develop and deploy a national survey of fraternal supporters and alumni. The survey, completed online, was launched this summer. This study was designed to give fraternal members the opportunity to comment on the work foundations are doing and to help shape the future direction of the organization.

From 36 fraternal organizations, 57,000 alumni and donors participated in the research survey. The research was designed to evaluate the effectiveness of existing communication programs in engaging donors, gather general demographic and socio-graphic information about supporters, and measure respondents' attitudes, preferences and opinions towards their respective fraternities and sororities.

### Key findings and conclusions from the survey:

- ▶ Sorority foundations tend to build a wider base of support and enjoy greater levels of alumna participation; fraternity foundations have a smaller pool of participation, but enjoy larger average gifts.

- ▶ The number of donors actively supporting foundations has declined over the last three years.
- ▶ Foundations received good scores in terms of trust and management but did not score as highly when it comes to understanding.
- ▶ Almost half of the respondents wish to receive communication in printed form despite a skew in the respondent base that would make them predisposed to electronic communication.
- ▶ Donors expressed high satisfaction with gift acknowledgement.
- ▶ Donor-recognition events play a strong, positive role in the relationship with supporters and their future giving.

A special thanks to all members of Kappa Kappa Gamma who elected to participate. These results identified best practices to be employed in the work of the Kappa Kappa Gamma Foundation.

# Kappa Kappa Gamma Foundation of Canada Celebrates 20 Years

*Since 1991, the Kappa Kappa Gamma Foundation of Canada has awarded scholarships to Canadian women studying for a doctorate degree. These women received scholarships in 2011:*

**Alicia Semaka—University of British Columbia, Centre for Molecular Medicine and Therapeutics.**

Through genetic testing, the gene mutation for Huntington Disease (HD) has been identified and testing can be performed to determine “at-risk” individuals. These at-risk persons have a predictable ability to pass HD onto their children, who are at a 50-percent risk of inheriting the disease. However, some people who test for HD receive an unusual result called an intermediate allele (IA). These people *will not* develop HD, but a risk remains in the children of the IA parent. Alicia’s work addresses the likelihood of an IA parent having a child who develops HD later in life and the psychosocial impact of this knowledge. Alicia is the first University of British Columbia genetic counseling graduate to pursue a Ph.D., and will be one of a few in the world with a Ph.D. Alicia has been awarded \$2,500.

**Andrea Edel—University of Manitoba, Physiology and Human Nutritional Sciences.** Andrea is studying Cardiovascular Disease (CVD). Knowing the relationship between chronic diseases and nutrition, the early identification of disease using disease biomarkers can result in early detection, treatment and ultimately prevention of peripheral arterial hardening, the hardening of large arteries that run through the arms and legs, reducing blood flow and oxygen to the extremities, resulting in difficulty walking and possibly could lead to heart attack. To avoid the damage and expenses related to the late detection of CVD, Andrea is testing with known nutritional interventions in humans, analyzing her findings and using breath samples to identify biomarkers in breath. This identification is a non-invasive, easily and readily obtainable test for CVD. Andrea has been awarded \$2,500.

**Parisa Bastani—University of Cambridge and MIT, Automotive Engineering and Economics.** Parisa aims to quantitatively model the transportation system under real-world uncertainties and compute the cost of emissions reduction for the on-road vehicle fleet in the U.S. and U.K. Alicia’s work will determine the marginal

abatement cost of greenhouse gas reduction, by linking technology, uncertainty and economics into one model. Her work is of particular interest to policymakers, economists, industry leaders and governments. Parisa has been awarded \$2,500.

Kappa Kappa Gamma Foundation of Canada scholarships are supported through direct donations. It receives no government support and there is no paid staff. To further an individual’s education is an enormous act of kindness. Thank you for considering a gift.

## How You Can Help:

**Donate online by credit card at**  
**[www.canadahelps.org](http://www.canadahelps.org)** (A 3.9-percent user fee is applied by CanadaHelps).

**OR**

**Mail your donation to:**  
Kappa Kappa Gamma Foundation of Canada  
P.O. Box 1273, 2384 Yonge Street  
Toronto, Ontario M4P 3E5 Canada

- ▶ The KKG Foundation of Canada is a registered charity, recognized by Canada Revenue Agency; Canadian tax receipts are issued to the donor ([www.cra-arc.ca/charities](http://www.cra-arc.ca/charities)).
- ▶ Donate in honour of an individual or milestone.
- ▶ Consider the KKG Foundation of Canada in your estate planning; please contact the treasurer at [kkgcanada.treasury@gmail.com](mailto:kkgcanada.treasury@gmail.com).
- ▶ Scholarship application is available at [www.kkg.org/Foundation](http://www.kkg.org/Foundation); search Foundation of Canada or email [kkgcanada.scholarship@gmail.com](mailto:kkgcanada.scholarship@gmail.com).

Telephone inquiries can be made at 416-622-0676 (leave a message).



During a visit to Toronto for the 100th anniversary of **BETA PSI CHAPTER**, Cindy Jarboe (right) presents **KAY WEATHERILL COYLE**, *Toronto*, with a token of the Foundation's appreciation for reaching Adelphi Society level with her Foundation giving.



# A Treasured Volunteer

—By **ANN GRAHAM SCHNAEDTER**, *Missouri*


Fraternity and Foundation Treasurer, **CINDY BENNETT SATTERWHITE JARBOE**, *William and Mary*, once asked a finance question at a Biennial Convention and soon after was asked to serve on the Finance Committee. It wasn't her first foray into Kappa volunteerism. Previously, Cindy served as President of the **RICHMOND ALUMNAE ASSOCIATION**, as an adviser and House Board member for **GAMMA KAPPA CHAPTER** and as Treasurer for the **COLLIER COUNTY (FLA.) ALUMNAE ASSOCIATION**. While a member of the **WILLIAMSBURG ALUMNAE ASSOCIATION**, Cindy was one of four alumnae who started the Sapphire Scholarship to aid Gamma Kappa undergraduates.

Cindy was raised on a family farm in Maryland where her dad and his eight siblings grew up. As a collegian at William and Mary, Cindy served as the Panhellenic Delegate and Panhellenic treasurer. She married her college sweetheart, David Satterwhite, and together they raised two daughters, Kathryn and Allison, until his sudden death, leaving her with two teenagers to raise. Cindy had worked as a financial officer for a Richmond company and a job offer from a Florida firm took her and her girls to Bonita Springs, where she eventually met her current husband, Charlie Jarboe. Today they enjoy semi-retirement, travel and golf.

Cindy continues to do financial consulting, the last project involving helping a private investment

advisory firm launch its first fund. She says her experience with Kappa's investments helped her with that project. Currently, she is working as the chief financial officer for AtHome America Corporation, a direct seller of decorative home products. She commutes from Florida to Chicago, where she puts in 12-hour days, but says she loves helping a company get to the next level.

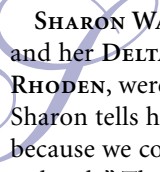
A board member at William and Mary's Mason School of Business and co-chairman of its development committee, Cindy travels frequently to Williamsburg, where she keeps a second home, especially important when her daughters were in Virginia colleges. She says that between traveling abroad with Charlie, her commutes to Chicago and trips to Virginia, plus her travel on behalf of Kappa, she logs more miles than her brother-in-law, who is an international pilot for United Airlines.

What keeps her volunteering for Kappa? "Meeting and becoming good friends with Kappas with whom I serve." As Fraternity Treasurer, she interacts with Kappas of all ages, working with chapters, House Boards and alumnae associations, does a lot of contract-related work and reviews Kappa's relations with vendors. She says, "I feel like I am contributing to the progress of the organization and am making a difference." 

# Walk a Mile in Your Sister's Shoes

*How Close Friendships and Rose McGill Aid Eased a Kappa's Burden*

—By **ANN GRAHAM SCHNAEDTER**, *Missouri*

 SHARON WALLINGFORD HENDRIX, *Texas Tech*, and her DELTA PSI “little sis,” SHELLEN RYAN RHODEN, were as close as could be in college. Sharon tells how “We loved being with each other because we could do crazy things and we loved to laugh.” The friendship continued after college as they vacationed in Mexico together, enjoyed class reunions that Sharon began organizing after graduation and served in each other’s weddings. “Shellen wore my wedding dress,” says Sharon. The friendship continued as both started families. Shellen’s family traveled twice from Texas to visit Sharon and her family in Southern California. They never lost touch and would often talk for hours.

In 2006, Shellen and her husband, Scott, called Sharon to tell her about Shellen’s diagnosis with ALS, also known as “Lou Gehrig’s disease,” for which there is no cure. Amyotrophic Lateral Sclerosis affects the central nervous system, making it difficult for the brain’s messages to get to muscles.

Sharon began educating herself and made her first trip back to Texas a couple of months later. “I remember we went to the movies and just spent time together,” says Sharon. “I visited at least twice a year. Within a year of the diagnosis, Shellen was bedridden, so we would just spend time watching TV.” The disease, as it progresses, weakens muscles and makes daily tasks difficult or impossible. Since it does not affect a person’s ability to smell, taste, hear or recognize touch, “I would brush her hair and rub her head, hand or arms,” says Sharon, “as I knew she still had the feeling of touch, [I did] anything that I could to help her be comfortable and entertained.”

Since Sharon was often called the “super glue” of their Kappa class, having organized so many reunions over the 30-plus years, it didn’t take much for her to mobilize the group with mini-reunions, plus sending cards and letters and homemade

videos to lift Shellen’s spirit. The Kappas participated in several golf tournaments organized by friends to offset heavy medical expenses. For the reunions, DELTA PSI alumna KAREN CONGER WELTON opened her home, dubbed “Hotel W,” with plenty of beds, food and drink for the sisters who flocked to Shellen’s bedside. An unexpected blessing turned out to be the reconnection with a long-lost pledge sister, JANE LIVINGSTON PETTIT, a lay minister sent by Grace Presbyterian Church to work with Shellen. The Delta Psi sisters had lost track of Jane, who actually lived only 10 minutes from Shellen. Jane, who was considering a call to the ministry, was immediately reconnected with the group.

Within a year, Shellen was on a respirator. Shellen’s son, Ryan, had just graduated from high school and her daughter, Lindsay, was just entering high school. Sharon, who knew Shellen was a fighter, and might hang on until she saw where Lindsay would go to college, wanted to make sure Lindsay gave their alma mater a chance. In Lindsay’s senior year, Sharon invited her to attend a Texas Tech vs. Texas football game with a group of her mom’s friends, a reunion Shellen always attended when she was able. Sharon says, “That trip sealed the decision for Lindsay to attend Tech. I was so happy to tell Shellen, who was, by then, not able to speak but could blink for “yes” or “no.” I knew by the sparkle in her crystal Kappa-blue eyes that she was pleased. I assured her that I would take Lindsay to orientation and help her sign up for the right classes.” In 2009, Sharon took Lindsay to Lubbock and videoed the trip so that Shellen could experience her daughter’s start at Texas Tech.

Five years of health-care expenses had mounted. Sharon says a caregiver who came daily took great care of Shellen—bathing, feeding through a tube, massaging, etc.—duties that a regular nurse probably would not do. But the caregiver did not



## Can You Help?

Join thousands of donors who support the Kappa Kappa Gamma Foundation. Make a gift online at [www.kappa.org/donation](http://www.kappa.org/donation) or mail a gift in the enclosed envelope to help Kappas who find themselves in unexpected financial need. Whether it is an undergraduate who needs help staying in school or an alumna who has been through a tragic experience, the Rose McGill Confidential Aid program can help these Kappas with your support.



**SHELLEN RYAN RHODEN**, left and **SHARON WALLINGFORD HENDRIX** sport Texas Tech tattoos during a 2004 football game against Texas.

have the required nursing education that insurance required for it to be covered. Sharon encouraged Scott to apply for Rose McGill aid on behalf of Shellen. It took some convincing, she says, but as soon as the paperwork was completed, Rose McGill Confidential Aid immediately sent funds to help with the costs of the caregiver and Shellen's medications.

Before the end of Shellen's life, she had communicated with Scott that she wanted to donate one of her kidneys to a close friend who she knew suffered from a disease that was destroying her kidneys. So, not only did Shellen leave a gift of friendship, but also the gift of life.

Twenty Kappas attended Shellen's memorial service at Grace Presbyterian, with the service conducted by Jane, who had by then completed her seminary training. Six months later, 13 Delta Psi alumnae attended and celebrated Jane's ordination. Though reunions have been bittersweet, the "super glue" of friendship is keeping these Texas Tech sisters closer than ever. 🗝️

## Did You Know?

✿ For the fiscal year ending June 2011, a total of \$223,508 helped 42 alumnae. Eight alumnae were provided Circle Key Grants for Continuing Education.

✿ \$21,250 was awarded to 10 undergraduates through the Confidential Aid program, which enabled these students to remain in school. Seven undergraduates received \$1,000 each in emergency assistance grants.

✿ 32 Rose McGill recipients participated in the Holiday Sharing program with 16 individuals, 16 chapters, 7 chapter/alumnae association teams and 79 alumnae associations raising \$24,045.

# *An Attitude of Gratitude*

## *Kappa Scholarship Recipients Say “Thank You”*

I would like to express my sincerest gratitude for your generosity. Out-of-state tuition has been more than my family bargained for and this scholarship will provide amazing support for my family and me to pay for my education and help me get through the senior year of my college experience. I could not imagine my undergraduate years without the sisterhood and leadership experience Kappa has given me.

—KELSEY LOTT, *Auburn*



I am so thankful to be selected to receive a Kappa scholarship. I am funding my education without any help from my family, so this scholarship will save me many months of future student loan payments, and for that I am very grateful.

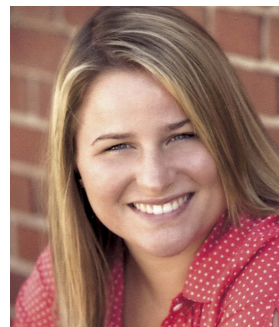
I am a psychology major and will be applying to graduate programs in occupational therapy. I'm looking forward to a career in helping people regain their independence following an illness or injury.

—KATIE ADDINGTON, *Furman*



It is with your generosity that I look forward to pursuing my goal of attending dental school. I am amazed at the unceasing support I receive from Kappa—not only financially, but mentally, emotionally and spiritually as well. The sisterhood reaches so far beyond the years spent as an active member, and I am thankful to have experienced that through this scholarship. I look forward to one day being able to support a fellow sister in my position. Thank you again for your loyalty, generosity and kindness.

—LAUREN BROSMER, *Butler*



I have always worked as hard as I could in life, but still have had financial burdens on my shoulders. You are not only helping me and the rest of your scholarship recipients, but you are helping foster a generation of amazing women. These scholarships will give us opportunities to follow our dreams. Thank you from the bottom of my heart.

—KELLY DeMENT, *Central Florida*



I am writing to express my extreme gratitude for providing me with scholarship funds. This past year and a half have been difficult—I lost my father and uncle in a plane crash. The support I received from Kappas across the continent was incredible. The generosity of this scholarship means a great deal to me, and I hope in the future I can give back to the Fraternity, which has given me so much more than money.

—KATIE MATTHEWS, *Colorado*





As the eldest of four children, my family has faced obstacles and financial issues. [This scholarship] will serve as a great financial aid and allow my year to go smoothly. One of my goals was inspired by my priest. He informed me that there has not been a college graduate at our parish and he encourages me to be the first. It is my goal to be one of the first of my parish to graduate from a university.

—**POULETTE ROMERO**, *North Texas*



Financial help is always a special surprise for me because I have been financially independent throughout my undergraduate and graduate education. Paying for my own education is humbling and helps me appreciate where I am today. I am in a field known as industrial /organization (I/O) psychology. When I finally reach my goal of being an I/O psychologist for a large organization, I am confident that my years of service and accomplishments within Kappa will shine through my work, professional and personal life.

—**NOELLE FRANTZ**, *Akron*

Thank you so much for the graduate scholarship. I crunched numbers every day before the award letter came as I tried to figure out how I was going to cover the costs of obtaining my Ph.D. in educational leadership. This scholarship will provide books and student fees for an entire year, a much-needed computer processor and peace of mind! Kappa's generosity has impacted my life in key moments. Knowing what a difference you have made for me, I hope to be able to do the same for other Kappa women one day.

—**JASMINE ULMER**, *Florida*



Thank you for not only lessening the financial burden that my family and I face, but also for investing in my education and future. Ultimately, I would like to help rehabilitate soldiers with post-traumatic stress disorder at an institution such as the Kessler Rehabilitation Center (N.J.). I look forward to a career that will provide relief to American soldiers, who have already given so much for their country.

—**GABRIELLA IMBRIANO**, *UCLA*

Since beginning college, I have worked two jobs to help pay the tuition that scholarships and loans did not cover. Three of five children in our single-parent household suffer from Crohn's disease. My mother will never give up, but seeing her work two jobs to pay minimum payment on hospital bills is heartrending. I cannot thank you enough for the kindness you have shown me by awarding me this scholarship. I would not have made it through college without the support of my Kappa sisters, and I cannot thank you enough.

—**ERIN SCHELL**, *Westminster*



# *A Scholarship Makes the Impossible, Possible*

—By **ALLISON BOOTH HUSHEK**, *UC San Diego*

At the end of summer in 1994, my White House internship was winding down. As I stood on the White House lawn in the same place the infamous single-engine Cessna would crash a few weeks later, I gazed toward the Rose Garden and pondered the financial realities that lay before me.

I had a whirlwind of a summer. As the White House Clerk's Office intern, I often walked between the Eisenhower Executive Office Building and the West Wing carrying out my duties. Fate arranged it that the only woman in my office was a Kappa, and she introduced me to another Kappa who was the social secretary for President Clinton.

My family didn't have the money to support this internship opportunity in the same way some others

did, but it didn't stop me. I rented a room from a Kappa alumna, **KAREN MARKS NAYLOR**, *Kansas*, who drove me to work every day from McLean, Va. My mom diligently stitched my suit dresses and shipped them to D.C. so that I would fit in with the other interns. One day that summer, I found myself standing in the middle of the Oval Office on the dense royal blue rug taking in all my surroundings, and I paused to realize—my dream had come true.


In September, I returned to UC San Diego to carry out my senior year as President of **ZETA NU CHAPTER**. I was low on funds and facing another year of book and living expenses, as well as law school application costs. I applied for a Kappa scholarship, which was granted in the winter of 1995. This scholarship enabled



**JULIE CULLINANE SMITH**, **ALLISON BOOTH HUSHEK** and **JENNY DOWNS PENJOYAN**, all *UC San Diego*, celebrated after Allison paid off her law school loans. Allison supports the Kappa Foundation, which gave her a scholarship 15 years ago.



me to meet my educational expenses for the remainder of my senior year. I entered law school in the fall of 1995 and am now in my 12th year of serving as an in-house attorney in the entertainment business in Los Angeles.

Two years ago, at my party to celebrate the “paid-in-full” status of my enormous law school debt, several of my Kappa sisters traveled to L.A. to join me, my husband and other friends and family. Kappa taught me about friendship, leadership, time-management, goal setting, organization, persistence, focus, loyalty and wisdom. I am ever grateful to Kappa for what it offered me in the past, and all that it still offers me today. The Kappa Foundation scholarship I received 15 years ago was my glimmer of hope in a desperate financial time. I donate to the Foundation and order magazines through the Rose McGill Magazine Agency so that I can pass that hope on to other Kappas in need. 

## Can You Help?

Join the many donors who support the Kappa Kappa Gamma Foundation. Make a gift online at [www.kappa.org/donation](http://www.kappa.org/donation) or mail a gift in the enclosed envelope to keep the scholarship program strong. Annually, more than 400 Kappas apply and 134 scholarships are awarded. We ask your support in helping award scholarships to all qualified applicants.

## Did You Know?

This year, a total of \$452,722 in scholarships was awarded to 84 undergraduates, 40 graduates, six Leadership Consultants and four Chapter Consultants.

# Tell Us Your Story

Here's a chance to share your story about your Kappa Kappa Gamma Foundation program experience. It could be something good, heart-wrenching, funny or otherwise. Sometimes, something good opens a door to an unexpected future. Adversity can lead to the kind of perseverance that becomes a lifetime cornerstone. And everyone enjoys a funny story! If you have a Foundation story to share, email **MAGGIE SIMS COONS**, Director of Planned Giving, [mcoons@kkg.org](mailto:mcoons@kkg.org) or mail to Kappa Kappa Gamma Foundation, P.O. Box 38, Columbus, OH 43216-0038. Stories may appear in *The Key*, on the website or in the *Foundation Focus* newsletter.

# *Walking in Our Founders'*

—By **JULIE MARTIN MANGIS**, *George Washington*, Museums Chairman

Kappa Kappa Gamma is the only Greek organization to own the home of one of its Founders.



## Did You Know?

- ▶ The Kappa Kappa Gamma Foundation operates two museums on a budget of less than \$140,000 a year. More than 54 percent of that amount is expended on fixed costs, such as rent, utilities, insurance and depreciation.
- ▶ Over the last five years, the museums had to cut program expenditures by 18 percent to cover increases in fixed costs.
- ▶ More than 2,500 have viewed the Tradition of Leadership®: Education to Enfranchisement exhibit.
- ▶ The Heritage Museum and The Stewart House welcome more than 2,500 visitors each year.
- ▶ The Stewart House roof is in dire need of structural repair and replacement, at a projected cost of \$175,000.

Today, if you visit Monmouth College, you can actually walk in the footsteps of Kappa's Founders. A map available at The Stewart House, *Footsteps of the Founders*, provides a map of Monmouth, noting the locations of the Founders' homes, as well as a map of Monmouth Cemetery, showing the locations of the graves of the three Founders buried there.

You can experience the routes the women took to classes, to run errands, to visit friends, and to attend those first Fraternity meetings at The Stewart House, where their vision and determination to have "nothing short of a Greek-letter fraternity" culminated in Kappa's founding in 1870.

Walking in the footsteps of Kappa's Founders is possible because a few Kappa alumnae seized the opportunity to purchase The Stewart House in 1990, eventually turning it over to the Kappa Kappa Gamma Foundation. The approximately 4,000-square-foot building is not only where the charter was signed, it is the place where the Fraternity constitution was



# Footsteps

written and was the setting for many of the Fraternity's early meetings. Occupying a nearly two-acre corner lot adjacent to the Monmouth College campus, The Stewart House is listed on the National Register of Historic Places, and receives more than 1,500 visitors each year.

Today, the 141-year-old sagging roof needs immediate attention. Three layers of curling and deteriorating asphalt shingles have created structural weakness. Since the shingles must be removed, we have an opportunity to choose a replacement roofing material. The Museums Committee, working with a preservation expert to plan a restoration that is both historically sensitive and durable, has determined that a standing-seam metal roof is the best solution, at a cost of approximately \$175,000. The Board of Trustees has allocated \$120,000 to the project and challenged the Museums Committee to raise the remaining \$55,000. The museums need your help to bridge the gap.

Giving to the Kappa Kappa Gamma Museums has never been more important, not only because The Stewart House desperately needs our help, but also because each of us has benefited from the remarkable journey that began with the vision of Kappa's Founders. Help us honor the Founders and keep this rich legacy for future generations to enjoy.

This year, please include the Kappa Kappa Gamma Museums in your annual giving to the Foundation by **designating a gift to "Raising the Roof"** at The Stewart House. 🗝️



## Deck the Grand Parlor!

Did you know that Kappa Headquarters is housed in two historic buildings built in the 1850s? Reflecting this history, part of Headquarters includes Kappa's Heritage Museum. Although highlights year round include an original Founder's badge and a Founder's diploma, each December the museum receives festive holiday treatment.



# All Gifts Great and Small

## Chapters and Associations Support Kappa's Foundation

*Group donations are an important source of funding for the Kappa Kappa Gamma Foundation. By pooling funds, groups can often make a substantial gift. In creating a tradition of giving, all of these groups are establishing a legacy for future generations. The featured groups share in their own words why they give to the Foundation. Each quarter, all donating groups are listed in the Foundation section of The Key. While we cannot feature all chapters and associations, we do thank them all!*

### ✿ Delta Zeta/Colorado College

Delta Zeta Chapter tries to donate a portion of the money we raise during our philanthropy events to the Kappa Kappa Gamma Foundation to bolster the great support system we've found in Kappa. We see the Kappa Foundation as a continuation of our chapter's strong bonds with the entire Kappa organization. We've gained a lot from our membership and hope that donating to the Foundation ensures the strength of our great support system.

### ✿ Broward Alumnae Association

Our Heels and Deals auction raised \$1,000 for the Kappa Kappa Gamma Foundation, doubling our contribution from last year. We will definitely be bringing this event back and now have the excitement of our success to re-energize for next year!



ALLISON RICHARDS BEAM, Washington; ELISABETH JACKSON RICE, Oregon; JOAN HUNTER, Emory; EMILY NETTLES KYSER, Emory; MICHELE MCCURRY BECKER, Puget Sound; HALEY THOMPSON, Princeton; and JULIANA LONG KNOPF, UC Irvine



### ✿ Theta/Missouri

This year our annual philanthropy, the Kappa Klassic golf tournament, raised nearly \$22,000, more than we have ever raised in the past. We donated a majority of the money to Cedar Creek Therapeutic Riding Center, an organization that provides horseback riding therapy to people with disabilities. Because we raised more than we traditionally do, we were able to donate more money to the Foundation this year as well. We believe it is very important to show our support for the Foundation, and we're proud to have been able to offer a generous donation.

### ✿ Portland Alumnae Association

We felt it was important to donate to the Foundation because it serves as an integral support network for our Fraternity and its members. We hope this donation displays our appreciation for all the efforts the Foundation has made to support fellow sisters in the bond during various points in their lives.





**LAKE WASHINGTON** members present a gift to the Foundation to **LAUREL PALMER**, *Ohio State*, Director of Annual Giving, and **SUSANNE WOLFF VANDER HEYDEN**, *Washington State*, Director of Alumnae.

### ✿ Lake Washington Alumnae Association

The Lake Washington Alumnae Association gave a gift of \$4,815 for Rose McGill, Disaster Relief, Education and Leadership, Annual Loyalty Fund, Museums and Scholarships.



### ✿ Eta Iota/Creighton

It has been our honor to donate to the Foundation. Many of our members have been awarded scholarships from the Foundation, and we currently have one of our sisters on the Marisol Scholarship! Every member who has attended Leadership Academy comes back inspired, and it only helps our chapter's love for Kappa grow. The members of Eta Iota are very happy to donate to the Foundation and be a part of something so special.

### ✿ Gamma Phi/Southern Methodist

The Gamma Phi Chapter is always proud to support the Foundation. We held a Mothers Weekend brunch at the house, and part of the profit was donated to the Foundation. During this brunch, the mothers of our Kappa sisters were able to meet and form relationships with each other, as well as members of our sorority. We felt that it was important to make a donation because the Foundation's goals and programs are what keep Kappa Kappa Gamma united and strong. As a chapter, we believe that supporting each and every Kappa is one of the most important parts of sisterhood, and thanks to the Foundation, it is able to happen.



**NANCY SILVER SNEED**, *Missouri*, **JUDY SAPPINGTON LYNCH**, *Missouri*, **JANE PICKARD MORRIS**, *Missouri*, and **SUE FORBES SNOW**, *Penn State*

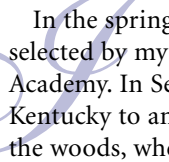


### ✿ Sarasota-Manatee Alumnae Association

Members of the Sarasota-Manatee Alumnae Association raffled gift baskets during our annual fashion show luncheon. Profits from our fundraiser, in addition to supporting the KKG Foundation, also benefit local charities in Sarasota and Manatee counties. All models in the fashion show are Kappas.

# *From the City of Boston to the Hills of Kentucky—How I Came to Attend Leadership Academy*

—By ANNIE O'BRIEN, Centre



In the spring of my sophomore year, I was selected by my chapter to attend Leadership Academy. In September, I drove five hours from Kentucky to an Ohio retreat in the middle of the woods, where I was greeted by a swarm of Kappas. This was my first interaction with Kappa on a national scale, and I was blown away by the size and diversity of our sisterhood.

I grew up in West Roxbury, Mass., which is one of the neighborhoods that makes up the city of Boston. A naturally excitable and boisterous person, I loved living in the city and assumed that I would go to a college in the Northeast like my siblings. Although Boston was a wonderful place to grow up, after 18 years I was feeling the itch to escape.

I landed at Centre College. Selected with nine other Boston-area students to be a Posse Scholar, our goals were to support one another as we dealt with culture shock and college-life transitions. We were all natural leaders, with a wide array of extracurricular activities under our belts. Diversity was an important part of our Posse. We represented different races, ethnicities, languages, religions, interests, talents and skills. The first year had its difficulties—we were mostly city kids who suddenly found themselves in the middle of central Kentucky. But each of us slowly began to find our niche, which, for me, became Greek life.

I registered for Recruitment my freshman year but withdrew the night before Philanthropy Round. It was a classic case of cold feet and, like many other first-year women,

I struggled with questions like, “What if no one invites me back? What if I get in and I don’t like the girls? What if I get in and they don’t like me?”

I had pre-conceived notions about sorority life and had never really imagined myself to be a part of it. However, the chapters at Centre were small, personal and deeply intertwined. I met wonderful women from every chapter, but the women of Kappa Kappa Gamma stood out. They were intelligent, funny and active on campus. To me, they seemed like Wonder Women.

After I made my decision to withdraw, and watched as my friends received bid cards and ran to their houses on Bid Day, I regretted my decision. Two days later, I told Becca, a Kappa sophomore, how upset I was, how I wanted to be a Kappa. A few days later, thanks to a Continuous Open Bid, I found myself in the chapter room of Kappa, getting letters and signs and big sisters—and feeling like everything had fallen into place.

Joining Kappa shaped everything about me, as a student, as a leader and as a friend. During my first semester in Kappa, I was chosen as the class representative for the Standards Committee. I felt encouraged by their trust in me and I knew that I wanted to be more involved. In my sophomore year, I was elected Recording Secretary. Not long after, I found myself immersed in Kappa’s Leadership Academy.





Since 2004, Leadership Academy and has inspired more than 1,800 active and alumna participants with new or renewed confidence in their ability to lead.

Gamma. I worked to raise the standards of our sorority community by reviving and implementing the Panhellenic Judicial Board of Review and working with my IFC counterpart on our National Hazing Prevention Week. As Marshal, I educated the chapter about the initiation process, for a smoother and more organized event.

I graduated that May with a degree in anthropology and sociology. After graduation, I began investigating career options in health sciences—nursing, nutrition and women’s health. I shadowed a dietician and a nurse practitioner, and absolutely fell in love with nursing. I will start an accelerated program to earn my M.S. in nursing from Regis College next fall, concentrating in either women’s health or family nurse practitioner. 🗝️

Every woman at Leadership Academy was so unique and wonderful, and all were eager to learn from one another. Despite what seemed like a world of differences, we all had the bonds of sisterhood in common. There was an unspoken camaraderie, knowing we shared the same joy in sisterhood, the same reverence for ritual and the same responsibilities of being leaders within our chapters. The workshops and team-building exercises reinforced our leadership training, from good communication between executive council and the chapter, to utilizing all of our resources to enrich the entire Kappa experience for every member. We exchanged ideas of how to be more efficient in meetings, how to manage risk more effectively and what had and hadn’t worked for our chapters. I returned to the Zeta Gamma Chapter fully charged and excited to know all that my chapter was capable of.

I became Marshal my senior year, while simultaneously serving as Panhellenic Executive Vice President and as a Rho

## Did You Know?

- ✦ This year, a total of \$300,098 was used to support quality educational and leadership programming.
- ✦ 63 Kappa Trainers provided 111 trainer visits to chapters and alumnae associations.
- ✦ Four LEAD Seminars were conducted.
- ✦ GIRLS Academy was held at Beta Mu Chapter in Boulder, Colorado, with 49 middle-school girls in attendance, five small-group facilitators and 15 program staff from Beta Mu, two lead facilitators, one on-site area coordinator and one alumna coordinator.
- ✦ 139 collegians and 67 alumnae attended Leadership Academy.

## ***LEAD Seminars Build Leadership Techniques***

*When accepting the Academy Award for her portrayal of June Carter Cash in Walk the Line, Reese Witherspoon stated that she had studied June's life and a recurring story was that people would say, "So how are you doing, June" and her reply was, "I am just tryin' to matter."*

LEAD Seminars give alumnae an opportunity to "matter" and make a difference.

Inspiration, motivation and sisterhood are just a few of the benefits of the LEAD Seminar program. Feedback from alumna seminars this year has been excellent. One attendee said, "I am ready to become more actively involved in my association."

During the summer, Kappa Trainer **LINDA PRICE PATTON**, *Oklahoma State*, facilitated seminars for two associations in Florida hosted by the **INDIAN RIVER** and **TAMPA BAY ALUMNAE ASSOCIATIONS**. Developed by **VIKKI HAAG DAY**, *Whitman*, and Linda Patton, these seminars are held over lunch and include two to three hours of instructions and activities.



Twenty participants from seven alumnae associations polished leadership skills during a LEAD Seminar.





Facilitator  
**LINDA PRICE PATTON**,  
*Oklahoma State*, leads  
the group in a team-  
building activity, "Step  
to the Line."

Led by a trained facilitator, members of three or more alumnae associations discuss leadership skills, fundraising and preparing new leaders.

Sharing ideas, discussing selected topics, meeting other alumnae in the area, these gatherings reinforce enthusiasm and excitement about Kappa.

A great feature of the LEAD Seminar program is affordability. The Education Department works in conjunction with the Kappa Foundation to provide these workshops for a manageable cost. Travel expenses for the facilitator, lunch for all participants and workshop supplies are provided through a Foundation grant. The host association is asked to provide transportation to and from the airport and overnight lodging for the facilitator if needed, as well as meals during her stay.

The demand for alumnae association LEAD Seminars is increasing. LEAD Seminars are planned for alumnae associations in Little Rock, Ark. (March 10); Portland, Ore. (Jan.); Los Angeles, Calif. (TBA); Scottsdale, Ariz. (March 31); and San Francisco, Calif. (Jan. 28).

The goal of the Education Department and the Director of Alumnae is to bring LEAD Seminars to interested alumnae associations throughout the U.S. and Canada.

If you are interested in hosting a LEAD Seminar for a group of alumnae associations, contact your Regional Director of Alumnae, Province Director of Alumnae or the President of your alumnae association. Requests also can be made online at [www.kappa.org](http://www.kappa.org) under Education, Kappa Trainers. 🔑



**KELLY O'DELL DIXON**, *Central Florida*, and other participants work on a project during a LEAD Seminar.



The **MONTGOMERY COUNTY (TEXAS) ALUMNAE ASSOCIATION** donated 68 books to the pediatric unit of Memorial Hermann Hospital in The Woodlands, Texas. Pictured are **BONNIE STOKES MIGIT**, *Texas Christian*, **LAUREN SULLIVAN PAITSON**, *Penn State*, **SANDY STOKES MCGOWAN**, *Texas Christian*, **KAREN KREIZENBECK ARCHER**, *Idaho*, and **VICKI REED HAMILL**, *Tennessee*.



Members of the **OKLAHOMA CITY ALUMNAE ASSOCIATION** bring the "Thunder Book Bus" and special guest, Rumble, to the Tapestry Project, as a RIF event. The Tapestry Project is a local organization which goes into a deteriorating neighborhood and makes it livable again. At this event, each child got to choose a new book to take home along with autographs by Rumble.



Members of the **ST. LOUIS ALUMNAE ASSOCIATION** Night Owls enjoy an afternoon at Sugar Creek Winery.





Despite cross-country moves, these friends have kept in touch since they were members of the *Detroit North Woodward Alumnae Association* 15 years ago. **THERESE VILLEGAS ANDERSON**, *Illinois*, holding a State of Washington pillow, hosts **DEBBIE BURSON WALSH**, *Michigan State*. The two reunited at Therese's Bellevue, Wash., home while Debbie's family was on vacation.



Once a month, members of the **GREATER LOS ANGELES ALUMNAE ASSOCIATION** gather to discuss books and enjoy homemade desserts, like this cake with a frosting fleur-de-lis.

More than 35 Kappas from the 1978–83 pledge classes of **GAMMA MU**, *Oregon State*, reconnected through Facebook and reunited in Tualatin, Ore. Benny Beaver, OSU's mascot, traveled all the way from Corvallis, Ore. to make a surprise appearance.



Alumnae from the 1959 pledge class of **Psi**, *Cornell*, enjoy a reunion trip to Seneca Falls to visit the National Women's Hall of Fame, featuring the suffragette movement.



# Two Kappas serve as Texas Tech Student Body President, 72 Years Apart

**T**oday, it is not uncommon for a college woman to be elected president of a college or university student government association. In fact, there are a number of Kappas who have recently served in this capacity, including **LEE BOBBITT**, *Texas Tech*, who served in 2008–09. But in the 1930s, female student body presidents were the exception. Just ask **MAXINE FRY McCULLOUGH** who, in 1937, became Texas Tech's first.

During her term as SGA president, Lee visited Maxine in El Paso to share “Tech stories.”

Born at the end of World War I, Maxine grew up during the Depression and entered Texas Tech as a 17-year-old, majoring in journalism. Her sister Marilyn also attended Texas Tech and the two sisters roomed together and became involved on campus.

Maxine was president of *Las Chaparitas*, a local sorority that would become **DELTA PSI CHAPTER** of Kappa Kappa Gamma. In her senior year, she helped with the school's newspaper and her assignment was to interview President Knapp, the second president of Texas Tech, weekly for the entire year. Although she had no idea she would later be elected as student body president, her relations with the administration would stand her in good stead.

In 1936, there was friction between the students and the administration. When someone suggested she run for student government president, Maxine consulted Marilyn, who thought it was a great idea and rallied their friends. In May of 1937, Maxine became the first female president of the student body at Texas Tech.

Apprehensive about being the first female elected student body president, Maxine took action and remembers her proudest achievement while presiding. “Tech had bonfires at homecoming football games,” she recalls, “and it had gotten out of hand” by way of vandals. When the administration banned the bonfires, Maxine asked the administration to let her council turn the situation around. They agreed and she began planning. With help from several student groups, night-and-day surveil-

lance was provided. “I’m proud it was resolved and the tradition still continues,” she says.

More than 72 years later, another member of Delta Psi Chapter, **LEE BOBBITT**, would take the helm as president of the student government.

Maxine served in many leadership roles throughout her life and Lee went on to serve Kappa as a Leadership Consultant and currently works as a legislative assistant to a Texas Congressman in Washington, D.C.

Despite a nearly 70-year age gap between these two role models, Maxine and Lee prove that Kappa sisterhood and leadership are timeless. 🔑

Based on a profile in *Texas Tech Today*, an online alumni magazine. Excerpts used with permission.



Having both served as president of the Texas Tech Student Government Association, **MAXINE FRY McCULLOUGH** meets **LEE BOBBITT** during Lee's term more than 72 years later.



# Alumnae Association Events with Flair



Scottsdale Kappas **JANE HOWK PARFET**, *Kentucky*; **DIANE WILLIAMS LANKER**, *Michigan State*; **KARLA KAUB BYNUM**, *UCLA*; **TERRI VANDORN HAMPSON**, *Iowa State*; and **BETTY RISSEER HEENAN**, *William and Mary*, enjoy an Evening at Tiffany.

## A Blue & Blue Evening at Tiffany

Members of the PHOENIX, EAST VALLEY and SCOTTSDALE ALUMNAE ASSOCIATIONS gathered together for a “Blue and Blue” Evening at Tiffany & Co., enjoying hors d’oeuvres among display cases filled with sparkling gems.

MEREDETH ROHNER MOSS, *Whitman*, Tiffany’s public relations director at Scottsdale Fashion Square, organized the event, which was hosted by the SCOTTSDALE ALUMNAE ASSOCIATION for area Kappas. Held after hours at the Tiffany retail store, Meredith gave a presentation of the history of Tiffany & Co., and attendees went home with a patriotic U.S.A. pin wrapped in the iconic blue Tiffany box.

The three Phoenix-area alumnae associations enjoy combining events, such as last year’s dessert and art event at a gallery owned by a Kappa. The associations also take turns hosting *Arizona State* on Founders Day and also hosting an event to honor graduating seniors of *Arizona State*.

## Kappa Art Auction for Faith Refuge

WICHITA FALLS (TEXAS) ALUMNAE ASSOCIATION hosted an art auction gala, “Key to New Beginnings,” to benefit Faith Refuge, a shelter being built to house homeless women. A wing will be dedicated to women with children.

The weeklong event, held in the lobby of Fidelity Bank in Parker Square, featured 40 artists, including five Kappas, who donated their work. An opening reception was held on a Monday and a silent auction continued all week until bidding closed on Friday.

The Faith Refuge building campaign originated to address the growing population of homeless women and children in Wichita Falls, Texas. Groundbreaking took place in May, and though the initial goal of \$3.2 million for construction was reached, Faith Refuge still needs funding for additional needs, such as a commercial kitchen, interior furnishings and other items. Many groups have initiated fundraisers to help these women have a better future by providing a refuge in which they can rebuild their lives.

Chairman of the Kappa Art Gala, **KATHY CLARK LUMMUS**, *Texas*, said she “hoped people shopping would stop to see the artwork and make a bid or a donation to Faith Refuge.” Nearly \$12,000 was raised during this Kappa event, which is held every two years. 🗝️



WICHITA FALLS ALUMNAE ASSOCIATION members contributed artwork and bid on art items for their biennial art gala.

# Key Achievements



✦ **KRISTYN MCDANIEL**, Tulsa, completed ten months of full-time disaster services this year as a member of AmeriCorps' National Civilian Community Corps. Kristyn was part of the fire-management teams in Denver and spent five months working with the U.S. Forest Service in Pike and San Isabel National Forests. She was trained as a Type II wildland firefighter and received chainsaw certification. She was a part of the teams responding to four fires, including the Kenosha Fire, a 15-acre fire in Fairplay, Colo. She also spent time in Texas mentoring and tutoring youth in the Boys & Girls Club of Brazoria County.

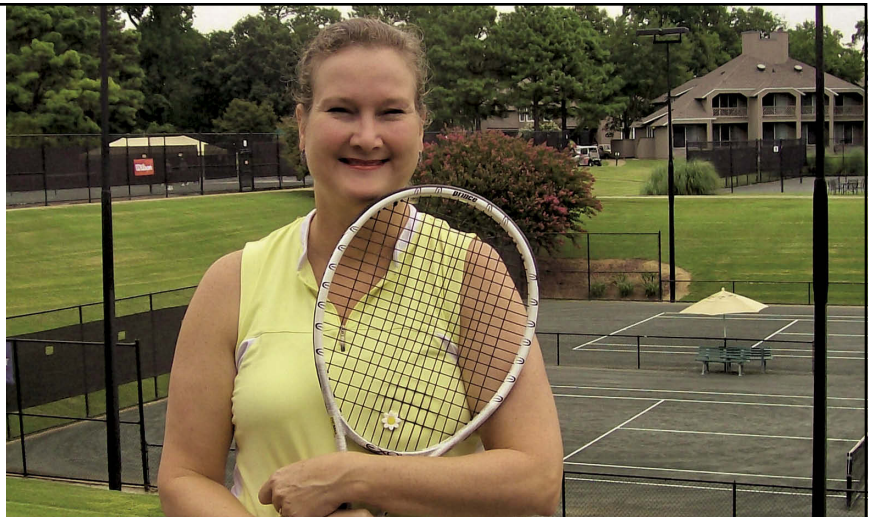


✦ **DIANE MILLER SELBY**, Ohio State, received the 2011 Distinguished Lifetime Membership Award from the Mortar Board National College Senior Honor Society. This award is presented to exceptional Mortar Board alumni who have exemplified a lifelong devotion to Mortar Board ideals of scholarship, leadership and service. As executive director for 21 years, Diane helped lead Mortar Board to be recognized as an outstanding member of the Association of College Honor Societies. Diane's dedication to Mortar Board is equaled by her commitment to Kappa Kappa Gamma, where she has served as editor of *The Key*, adviser to **BETA NU**, Ohio State, President of the **COLUMBUS ALUMNAE ASSOCIATION**, Vice President of the Heritage Museum Guild and as a Province Director.

✦ **SARAH BIDNEY**, Simpson, PGA Teaching Professional, was named teacher of the year by the Iowa Section Professional Golfers' Association, the first woman to receive this honor in the 26-year history of the award in Iowa. She has been teaching professional golf since 2002.



✦ **CHARLOTTE SQUIRE McCARTER**, Emory, has been appointed to the "Emory Athletics All-Time Team" for women's tennis. In conjunction with the 25th anniversary of the Emory University Athletic Association, the school has announced the All-Time Teams for former athletic standouts. In 2000, Charlotte was inducted into the Emory Athletic Hall of Fame. Charlotte is a member of the **WILLIAMSBURG ALUMNAE ASSOCIATION**, where she serves as Secretary and as an adviser to the Treasurer of **GAMMA KAPPA**, William and Mary.





🔑 **BARBARA SMITH MEDFORD**, Texas Tech, serves as the new-volunteer representative to the advisory council for The Lady Bird Johnson Wildflower Center in Austin, Texas. The Wildflower Center brings to life Mrs. Johnson's vision in its public gardens, woodlands and meadows. Barbara is a member of the "Mr. Smarty Plants Team," answering questions online about gardening as well as appearing on Wildflower Hour radio, Central Texas Gardener TV, giving garden tours, and teaching a class at the University of Texas. Visit [www.wildflower.org](http://www.wildflower.org) to access Mr. Smarty Plants and perhaps have a question answered by Barbara.



🔑 The Society of American Travel Writers has honored travel journalist **SHARON SPENCE LIEB**, Northwestern, with four first-place awards for adventure articles about swimming with whale sharks off Cancun, hiking the Aletsch Glacier in Switzerland, fishing for salmon in British Columbia and following the footsteps of Captain James Cook to Antarctica. "My goal in publishing these articles is to inspire others to plan life-changing adventures on our beautiful planet," says Sharon. Read Sharon's articles at [JetSetExtra.com](http://JetSetExtra.com) and her "Globetrotters" features by [moultrienews.com](http://moultrienews.com). Sharon lives in Charleston, S.C., with her photographer husband, Warren Lieb.



🔑 **TRACY MUNOZ**, Nebraska, has been awarded the 2011 silver medal for outstanding contributions to the advertising profession and the community by the American Advertising Federation of Lincoln, Neb. Tracy, vice president of operations at the "minnow PROJECT," has been involved with the AAF for many years, nine as a board member, during which time her leadership helped the club win numerous awards on the local, regional and national level. Tracy actively mentors advertising students and is involved with **SIGMA CHAPTER**, Nebraska, having won the 2002 Sigma Chapter Spirit Key award.

🔑 **PAT FREEMAN ZEABART**, Michigan State, received the Liberty Bell Award from the Muncie-Delaware County, Ind. Bar Association, recognizing her community service as a non-attorney who promotes better understanding of the rule of law and a greater respect for the law and the courts. Pat, who recently retired as Yorktown, Ind. Town Court Judge, emphasized the role of technology in making her court run smoothly. She is pictured with former Delaware County Prosecutor, Mark McKinney.



🔑 **KELLY MATYAS MAGYARICS**, Pittsburgh, has achieved the diploma of wine studies from the Wine and Spirit Education Trust. The certification involves six units covering viticulture, viniculture, the business of wine, spirits and all styles of wine (still, sparkling and fortified.) Exams include blind tastings, essays and research papers over several years. Kelly is a wine and spirits writer and wine educator in the Washington, D.C., area. She writes for numerous national and regional magazines including Wine Enthusiast, Cheers, Imbibe, Sommelier Journal and DC Magazine ([www.kellymagyarics.com](http://www.kellymagyarics.com)). Kelly currently serves as Regional Director of Chapters for Region I.

Submit news and photos to [thekey@kkg.org](mailto:thekey@kkg.org). Only high-quality, high-resolution digital files or prints will be accepted. Visit [www.kappa.org/thekey](http://www.kappa.org/thekey) for further guidelines.



**FLORIDA STATE. EPSILON ZETA** members *Laura Kelly, Olivia Dame, and Taylor Rinehart* travel away from the Sunshine State and take to the slopes of Park City, Utah, during winter break.



**VIRGINIA TECH.** Big- and Little-Sisters *Michelle Gabe and Christine McCoy* celebrate Bid Day at **ZETA MU**. The two met during Recruitment, and after making a connection during preference round, Christine decided to "Go Kappa!"

**IOWA STATE.** Children of Collins Maxwell Elementary School participate in Kappa Carnival games to win books. Even the **DELTA OMICRON** house director helped out by reading stories to the kids.



**HILLSDALE. KAPPA CHAPTER** members *Sally Klarr, Kara McCormick, and Katellynn Beyer* support *Elizabeth Brannick* (second from right) at a women's basketball game. GO CHARGERS!







**COLORADO STATE.** At **EPSILON BETA's** annual "A Key Affair" alumnae brunch, active members *Kelly Mathies*, *Kat Parker*, and *Elizabeth O'Brien* enjoy the company of *Julia Bloss Stone* and *Terrie Cowen Foristal*, both advisers for the chapter.



**VANDERBILT.** **EPSILON NU** members play peekaboo while volunteering at the Nashville "Eggstravaganzoo" event. Children collected 30,000 eggs hidden throughout the zoo's Festival Field to redeem for prizes.



**JOHNS HOPKINS.** As part of spring Homecoming festivities, *Dana Mariani*, *Jessica Chang*, *Beth Simmonds*, *Kathryn Alsmann*, *Kana Hamada*, and *Saylee Ahn* cheer for the Johns Hopkins men's lacrosse team.

**KANSAS.** **OMEGA CHAPTER** welcomes its new member class on the lawn of 1 Gower Place with posters, balloons and loud cheers.



Now college students and post-graduates, the four Barta sisters, **LEXI, ROMI, MARNI** (all *Northwestern*), and **Berni**, who is now a student at Penn, founded the nonprofit organization, Kid Flicks, when they were teens.



## Kid Flicks

The four Barta sisters share not only sisterhood, but their passion for bringing entertainment to children's hospitals around the U.S.

—By **MARNI BARTA**, *Northwestern*

As the years go by, one outgrows certain things. Whether an old Barbie collection or a favorite dress, the time comes when items once cherished find their way to thrift shops and garage sales. But old possessions can sometimes become another's treasure.

Nine years ago, my sisters, Lexi, Romi, Berni and I dug through old closets and drawers in an attempt at "spring cleaning." We came across a number of DVDs we no longer watched. Remembering a friend who had relied on movies for entertainment while in the hospital being treated for Leukemia, we thought of a new home for our old belongings. We stacked them in a box and carried them to the pediatric oncology department of the Los Angeles hospital where our friend had been treated.


While dropping off our donations, the child-life specialist told us, "Movies are the first things most kids ask for when they are in the hospital." We found it remarkable that a pile of movies collecting dust in the back of a closet could so easily brighten a sick child's life. We knew we couldn't be the only family with a collection of neglected DVDs.

From there, the flame ignited. We decided to collect as many DVDs as possible to donate to hospitals in the area. After writing solicitation letters to family and friends, we had more than 100 movies within a week. Donations continued to pour in and Kid Flicks was born. We decided each hospital should receive a "movie

library" of 100 assorted films, appealing to boys and girls, toddlers through teenagers. Whenever we collected another 100 movies, we donated to another hospital.

Soon our project took off on a larger scale. Movie studios and production companies helped increase donations. We began organizing collection drives at our schools and word spread. People began organizing Kid Flicks collection drives at their own schools, through Brownie troops and religion classes. TV and radio interviews, as well as newspaper and magazine articles, continually help spread the word about Kid Flicks. We receive dozens of donations every week from all over the country.

Initially, we delivered the movie libraries to hospitals in Southern California. When we had covered every hospital within a five-hour round-trip driving radius, we applied for grants and awards to cover the costs of shipping to other cities and states. As of December 2011, Kid Flicks has donated more than 60,000 movies to more than 600 different hospitals throughout the United States and South Africa.

As college students and post-grads, we continue to work on Kid Flicks from the respective cities in which we live. Three of us joined Kappa at Northwestern University (Lexi '07; Romi, '10; Marni, '13), while Berni is currently a sophomore at the University of Pennsylvania. Our goal is to provide every children's hospital in the country with a Kid Flicks movie library. For more, visit [www.kidflicks.org](http://www.kidflicks.org). 



# Catch the Cure

—By **ALYSSA VUKSON**, *Washington & Jefferson*

When ZETA LAMBDA CHAPTER President **SARAH SCHAITKIN** stepped up to the plate at the annual Catch the Cure softball tournament, she knew she was participating in far more than a philanthropy event. She was supporting all of those who, like her, had been affected by breast cancer.

“My own mother died of breast cancer, so Catch the Cure means a great deal to me,” says Sarah. “As young women, an event that benefits breast cancer research is something that we are naturally inclined to care about and put our hard work toward.”

In her lifetime, a woman has a one-in-eight chance of being diagnosed with invasive breast cancer. But for every one woman, it is likely eight more are standing beside her with love and support.

Four years ago, Zeta Lambda held its first Catch the Cure tournament at Washington & Jefferson College.

“We knew we wanted to create a campus-wide philanthropy event for something that has affected us all,” says **KERRI DIGIOVANNI**, who served as chapter President in 2008. “Whether it is a family member, friend or neighbor, we all know someone who has been diagnosed with breast cancer. It was something we, as a chapter, felt passionate about.”

In 2010, the event was declared the “Most Successful Philanthropy” at the campus Greek Awards. Last April, Catch the Cure chairman, **KELSEY DEL GRECO**, teamed up with a group of business administration students to take it to another level.

A total of 16 softball teams filled Cameron Stadium for the event. Participants included other fraternities and sororities, sports teams, clubs, and many independent students.

Scion of the Washington Auto Mall agreed to be a sponsor, providing food, drinks and entertainment for the softball tournament. Guests enjoyed a moon bounce, face painting, and two cars were available to test drive. Family, friends and a number of local pizza restaurants also contributed.

This past year, Zeta Lambda raised \$6,227 for Susan G. Komen for the Cure.®

This event means a lot for our sisters; it strengthens our connection to the community and campus, as well as strengthens our sisterhood bond. And most importantly, as a band of sisters we prove our ability to come together and accomplish goals and benefit the greater good. 🗝️

Out of 16 teams, this team may have won the softball tournament, but everyone felt like a winner for contributing to the Susan G. Komen cause.



# Men in Heels

## College Men Walk to End Violence Against Women

—By **ALLISON YOUNGS**, *Cincinnati*

As the saying goes, one cannot truly understand another's experiences until walking a mile in her shoes. Though metaphorical, the women of **BETA RHO<sup>Δ</sup> CHAPTER** took the proverb literally and persuaded more than 100 men at the University of Cincinnati to sport stilettos in support of the fight against gender violence.

Walk a Mile in Her Shoes®, The International Men's March to Stop Rape, Sexual Assault, and Gender Violence, asks men to walk a mile—in heels—to raise awareness in their local communities about the issues. Violence against women exists everywhere, but urban college campuses and their surrounding communities see it much too often. Still, the topic often goes ignored. By bringing this event to campus, it encouraged a playful atmosphere for an open dialogue among community members and students alike.

The walk participants gathered at McMicken Commons and circled the surrounding streets. Along the mile-long route, men passed various booths, such as the jewelry "Accessorize Here" stand with candy necklaces and ring pops. The "Hydrate Here" booth offered water and other refreshments. Fellow Panhellenic community members joined the effort by volunteering at these rest stops and cheering on the walkers.

The local community became involved with the march as well. In addition to sponsorships from local businesses, a Cincinnati radio station helped advertise the event in the weeks leading up to the march and provided music and an emcee. UC campus groups, including the women's center and the school newspaper, *The News Record*, also supported the event.

The Walk a Mile in Her Shoes® organization asks that each organized march donate all proceeds to a local women's crisis center or shelter of their choice. Beta Rho decided on Women Helping Women, a social service agency that provides crisis support, education, and

prevention services for victims and survivors of sexual assault, domestic violence and stalking. Their services provide one-on-one support, including a 24-hour crisis line, hospital accompaniment for rape victims, crisis intervention sessions and more. Their commitment to educating the community about gender violence made them a perfect choice for a partnership.

Now in its tenth year, the organization's mission continues to use a creative, but powerful experience to prove to communities across the country that the fight against sexualized violence can be won. The women of Beta Rho have raised more than \$5,000 in three years for Women Helping Women, and the event continues to grow.

As the walkers danced their way up Main Street on the final stretch back to McMicken Commons, the women of the community cheered them on, proud of the support from the men of UC and because a girl knows walking a mile in heels isn't easy! 🗝️



**BETA RHO<sup>Δ</sup>**, *Cincinnati*, supports Walk a Mile® in Her Shoes and the Kappa Kappa Gamma Foundation.



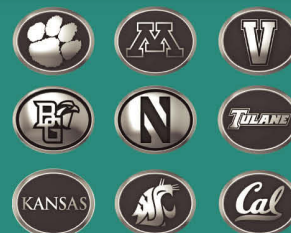
Men from University of Cincinnati walk across campus in heels during a Walk a Mile in Her Shoes® event hosted by **BETA RHO**, Cincinnati.





# Kappa Kappa Gamma

Beads & Jewelry  
by  
*Miner's Den Jewelers*



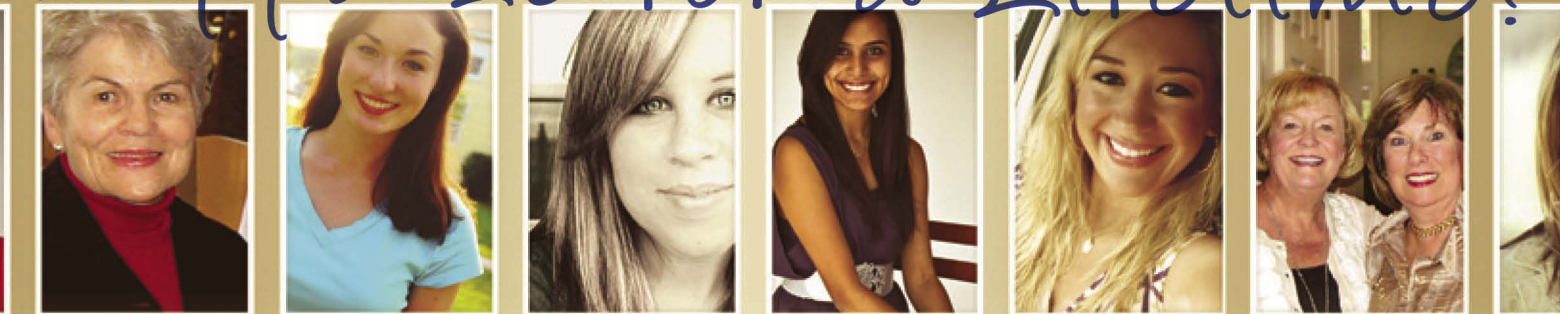
Beads fit all major bracelet lines

[www.minersden.com](http://www.minersden.com)

Miner's Den Jewelers • 248.585.6950 • Visit our website to view the complete collegiate and sorority collections



## Kappa Is for a Lifetime!



Pay dues...Be an alumnae association member.  
Collegians and alumnae—we all support Kappa programs.

Join your local alumnae association at [www.kappa.org/alumnaeassociations](http://www.kappa.org/alumnaeassociations).  
No association? Join Dues Direct: [www.kappa.org/duesdirect](http://www.kappa.org/duesdirect).

DUES DIRECT



Kappa Kappa Gamma®

Tradition of Leadership





international badge day

**March 5, 2012**

Wear your key badge to show your Kappa and Greek pride.

## Have you moved? Changed your name or email address?

*Visit [www.kappa.org](http://www.kappa.org) to update your profile or email [kkghq@kkg.org](mailto:kkghq@kkg.org). Please include your maiden name and chapter.*

Beautiful Brighton®  
Silverplated Charm Bracelets  
from Gamma Phi Alumnae.

**\$45** plus shipping

Order online at:  
[www.kappabracelets.com](http://www.kappabracelets.com)

Or write to:  
Kappa Kappa Gamma Bracelets  
P.O. Box 12404  
Dallas, TX 75225-1404  
for an order form.



Adjustable to 8".

Perfect gifts for new members, initiates, active members and alumnae!

**ORIENT**  
*expressed*



*Flowers ~ a sure sign of Spring*

It's fun! It's rewarding!  
Join the ORIENT EXPRESSED home show team  
apply [online@www.orientexpressed.com](mailto:online@www.orientexpressed.com)

orient expressed • new orleans • 888.856.3948  
[www.orientexpressed.com](http://www.orientexpressed.com)



Send all address changes  
and member deaths to:  
KKΓ Headquarters  
P.O. Box 38 • Columbus, OH 43216-0038  
866-554-1870 • Email: kkgHQ@kkg.org

## the Key Source [www.buykappa.com](http://www.buykappa.com)

800-441-3877 2 309 691 3877

Group discounts available for 6 or more!



**1** Keyring with KKG \$7.50 **2** Kappa word symbols, framed 10" x 20" \$53; unframed \$28 **3** Self standing block 6"x 2.5"x1" with hanger on back \$13.50  
**4** Recycled fleur shop tote \$7.50 or 3 for \$19 Large tote \$8.50 Insulated tote, other sizes available on line **5** BEACH TOWEL \$24, Striped tote \$12, tumbler \$9  
Buy all three, only \$37, a 20% savings! **6** a Value sports bottle \$4.95 b Blue aluminum bottle \$7.50 c Tall nalgene bottle \$11.75 d White stainless bottle with  
dot imprint \$16.95 **8** Plush light blue or navy blanket with KKG & fleur . \$28 Personalized \$6 each line. **9** All season ornaments: blue zig zag or keys \$19.95  
crest ornament on gold mist \$13.50. **12** Traditional letter crew in oxford or navy \$33 Hoody \$42 Unisex S-XL **13** Blue plaid hood w/ matching lining \$59  
Unlined \$49 S-XL **14** Crest crew reg \$38 only \$29 'til 2-15. Unisex oxford or navy S-XL **15** Navy crest 1/2 zip sweatshirt \$48 Unisex S-XL  
**16** Retro KKG jersey \$19 **17** Jersey Fleur & KKG \$22 S-XL **18** Fleur key wrap ring \$29.50 **19** KKG lavalier \$15 Chain: add \$16  
Lavalier, chain combo: \$29 **20** Iris surround bone china box \$18 Fleur swirl round box \$11. Add initials, date in iris or swirl box: \$7.50.  
Small iris or key box: \$7.95 **21** Flip flops sz 5-11 \$19.95 solid blue or polka dot w/ KKG **22** New love Kappa boyfriend pants  
**23** Flannel pants in blue & blue plaid, **24** marina blue, and **25** black with pink plaid S-XL \$28 **26** Blue dot Kappa pants \$32  
**27** Poly shorts in navy & white, light blue with navy, lime, or grey \$26 XS-XL **Products & prices may change anytime. Email:**  
**keysource@ameritech.net. Call 309-691-3877. Address: 1723 W. Detweiller Dr. Peoria, IL 61615. MIN PHONE ORDER \$25 Shipping**  
additional. See web for details. special pricing for chapters.reunions, any events.,call for quotations Jewelry pricing subject to change.

