

VOLUME 126, No. 2  
SUMMER 2009

# The Key

A KAPPA KAPPA GAMMA PUBLICATION



**Reading Is Fundamental**  
*Kappas Give the Gift of Reading*



VOLUME 126, No. 2  
SUMMER 2009

*The Key* is the first college women's fraternity magazine, published continuously since 1882.

#### EDITORIAL BOARD

Editor

**Kristin Johnson Styers**, *Georgia Southern*

Associate Editor

**Lois Catherman Heenehan**, *Adelphi*

Alumna News/Profiles Editor

**Ann Graham Schnaedter**, *Missouri*

Collegiate News Editor

**Lindsey Sanders Crocker**, *UCLA*

Contributing Editor

**Melisse Campbell**, *Mississippi*

Editorial Board Chairman

**Gay Chuba Barry**, *Penn State*

Fraternity Vice President

**Julie Marine Leshay**, *Colorado College*

---

Fraternity Executive Director

**Lauren Sullivan Paitson**, *Penn State*

Contributing Editor

**Jenny Struthers Hoover**, *Bowling Green*

Staff Photographer

**Katie Mooney Minister**, *Richmond*

---

Graphic Designer

**Victoria McDonald**, *Q.V. Design*

---

Printed by **The Watkins Printing Company**,  
Columbus, Ohio

The Key (ISSN 1063-4665) is published quarterly by Kappa Kappa Gamma Fraternity, 530 E. Town St., Columbus, OH 43215. Printed in the United States of America, copyright Kappa Kappa Gamma Fraternity 2009. Subscription price is \$3.

Preferred periodical postage paid  
at Columbus, Ohio

POSTMASTER:

Send address changes to

The Key

P.O. Box 38

Columbus, OH 43216-0038

# CONTENTS

## departments

### 2 President's Message

Discover the many legacies Kappa encompasses.

### 3 Fraternity News

Welcome **ETA XI CHAPTER**, installed at *UC Merced*; Support Recruitment by submitting the reference form on Page 13; Join an alumnae association or Dues Direct!

### 28 Foundation News

**KELLY COX BILEK**, *TCU*, former scholarship recipient, pays it forward; Associations and chapters generously support the Foundation; An IRA Charitable Rollover is a win-win for donors and the Foundation.

### 32 Accent on Alumnae

Alumnae associations and individuals reflect Kappa ideals.

### 42 In Memoriam

We honor those we have loved and lost.

### 44 Collegiate News

Dig in with **AISLINN LOWRY**, *Illinois Wesleyan*, at the renowned NYU Excavations at Amheida in the Dakhleh Oasis, Egypt.

## Membership Reference Form—Page 13



College Fraternity  
Editors Association



National Panhellenic  
Editors Conference

# features

## PAGE 14

### Hopes, Dreams & Expectations

Legacies Reflect on  
Membership Recruitment



## PAGE 22

### Reading Is Fundamental

Kappas Give the Gift of Reading

## PAGE 40

### Key Achievements

Former Fraternity President **KAY SMITH LARSON**, *Washington*, receives the Distinguished Service Award from the University of Washington Alumni Association; **GINGER MILLER AMBLER, Ph.D.**, *William and Mary*, is named vice president of student affairs for the College of William and Mary; and **DARCY HOWE**, *Indiana*, is ranked among the top women financial advisers in the U.S. for 2009 in *Barron's* magazine.



## On the Cover

The cover photo is by **CHRISTINE VERGES GACHARNÁ**, *Oregon*, a member of the **NORTHERN VIRGINIA, NEW ORLEANS and STARS & STRIPES ALUMNAE ASSOCIATIONS** and former President of the **TACOMA AREA ALUMNAE ASSOCIATION**. Christine has been contributing to *The Key* since 1994. She lives in Northern Virginia with her husband and two children, where they are often found at the public library. Visit her blog at [www.christinegacharna.com/blog](http://www.christinegacharna.com/blog)

*The Key* of Kappa Kappa Gamma links each member with the Fraternity. The mission of *The Key* is

- To inform, inspire and challenge
- To promote leadership, scholarship and friendship
- To sustain and nurture loyalty and interest
- To recognize the accomplishments of individuals, groups, the Fraternity and its Foundation
- To provide a forum for an exchange of information and opinion
- To be a permanent record.

## Fraternity Headquarters Contact Information

P.O. Box 38  
Columbus, OH 43216-0038  
Tel: 866-554-1870  
Fax: 614-228-7809  
E-mail: [kkghq@kkg.org](mailto:kkghq@kkg.org)  
Web site: [www.kappa.org](http://www.kappa.org)

Send information and photographs for *The Key* to the Editor at the address above or via e-mail to [kstyers@kkg.org](mailto:kstyers@kkg.org).

## Submission Deadlines

Spring—November 1  
Summer—February 1  
Fall—May 1  
Winter—August 1

## Rose McGill Magazine Agency

800-KKG-ROSE  
800-554-7673  
[www.kappa.org/rose](http://www.kappa.org/rose)



## president's message

# What Will Our Legacy Be?

When Kappas hear the word “legacy” most think of a Kappa sister, daughter or granddaughter participating in Recruitment. Actually, if you truly consider the word legacy, it is what Kappa is all about. Our six Founders gave Kappa a legacy of leadership and academic excellence that has been honored during the Fraternity’s 139 years. When a young woman pledges her name and interest to the Fraternity, she is given a legacy of lifetime membership. When a legacy joins one of our chapters, she brings with her a deep appreciation of Kappa.

As you get to know the women in your chapter or alumnae association, you create a legacy of friendship. When you make a donation to the Foundation you continue the legacy of giving. The women who lead our organization at the local, regional and international levels strengthen our legacy of leadership. Members who strive for academic excellence continue our legacy of learning. And if you take the time to teach someone to read, you continue the legacy of academic excellence through our charitable focus—Reading Is Fundamental (RIF). Let’s look at a few of our legacies.

The first one is the family legacy and the importance of this relationship. Too often, members of our chapters quickly dismiss legacies during Recruitment instead of taking the time to get to know them. Sadly, we miss out on outstanding young women who have a connection to the organization and likely would be involved in chapter leadership and campus activities. Legacies are young women who have an inherent knowledge of Kappa and generally a desire to continue this special connection as highly involved members in respect for their sister, mother or grandmother.

The second is the legacy of literacy. Recruitment is the perfect opportunity to promote RIF and the importance of teaching

individuals to read. Many of us take reading for granted because we have been fortunate to acquire this skill as young children, but there are still too many adults and children across our continent and around the world who have never learned to read.

The third is the legacy of continuity. Our Founders, through their wisdom and vision of an organization for women, began this incredible legacy. They believed in the right to have a women’s organization equal to the men’s fraternities. Their legacy is now placed in the hands of our current and future members. How do we carry on this legacy during our daily lives? Each of our alumnae associations and chapters not only has the potential to carry on, but often can add incredible legacies in their communities and on their campuses by developing innovative programs and participating in activities to help make a better world. Reach out to lend a hand to those eager to make better lives for themselves.

Having discovered the many legacies that Kappa encompasses, we must celebrate the legacies that the Fraternity has bestowed upon us. Take the time to think about the legacy you want to leave. As new members, graduating seniors or alumnae it is incumbent upon us to have the conversation—what will our legacy be?



Loyally,

A handwritten signature in dark ink that reads "Denise Rugani". The signature is fluid and cursive, with a stylized initial "D".

**DENISE RUGANI, UC Davis**  
Fraternity President  
drugani@kkg.org



# Honoring Kappa's Origins

The earliest days of Kappa were memorialized at Monmouth College with the dedication of a marker near the site of the rustic wooden bridge where a few young women spoke of forming a secret society of their own. Another marker was placed at the home of Kappa Founder **MARTHA LOUISA “LOU” STEVENSON**—the site of Kappa’s first business meeting, when the golden key was chosen as the official badge. Both markers were funded by a grant from the Kappa Kappa Gamma Foundation’s Museums Committee.

Fraternity President **DENISE RUGANI**, *UC Davis*, and Alpha<sup>Δ</sup> Chapter President **LINDSAY TRAFTON**, *Monmouth*, unveiled the historic marker during a weekend celebration coinciding with the date of the college’s founding in 1853.

“For me to be part of the dedication of the markers at Monmouth College was truly one of the most special moments of my time as Fraternity President,” Denise said. “These markers are a reminder to all of the power of the women’s movement in America. They keep the message of our Founders alive. From a time when few women were admitted to college, these women not only attended college, but also had the dream of creating a women’s organization equal to that of the men’s fraternal organizations. Today it is our moral imperative to keep their vision alive and pass it on to future generations.”

It was on a pedestrian trestle bridge over a stream that ran though the Monmouth College campus where Kappa Founders met to pursue their dream of a secret Greek-letter society similar to those of the male students. The marker is located at the approximate midpoint of the block-long bridge, which stood until the early 20th century when the stream was diverted underground.



Dr. Mauri Ditzler, President of Monmouth College; **LINDSAY TRAFTON**, President of **ALPHA<sup>Δ</sup> CHAPTER**, *Monmouth*; **SARA MILLER JOHNSON**, *Missouri*, granddaughter of Founder **MARTHA LOUISA STEVENSON**, and Fraternity President **DENISE RUGANI**, *UC Davis*, celebrate the placement of a marker at the site of the little wooden bridge where the idea of Kappa Kappa Gamma was born.

Among Fraternity officers present were **KAY SMITH LARSON**, *Washington*, Fraternity Historian and former Fraternity President. Kay recalled how the Monmouth College policy of admitting women on an equal footing with men since its earliest days helped lay the groundwork for the founding of the first national secret collegiate society for women, Pi Beta Phi, at Monmouth in 1867, followed by Kappa just three years later.

Monmouth College Trustees and Alpha<sup>Δ</sup> Chapter alumnae **GAIL SIMPSON OWEN** and **BARBARA WATT JOHNSON**, attended the dedication and Gail reflected on the meaning of the bridge: “The metaphor of a bridge is fitting as we build bridges to take us from one place to another; from the known to the unknown, an arduous journey made easier with a bridge, a connection. For me, the Kappa bridge spanned the distance from my family 5,000 miles away to my new sisters and friends. I recognize that it is our turn to build the next bridge for those who come after us.”

Today 230,000 initiated members in 136 collegiate chapters and more than 300 alumnae associations carry on the dreams of those young women in a multigenerational, international organization recognized for its Tradition of Leadership®.



ETA XI, UC Merced, members celebrate Installation.

# Eta Xi Chapter Installed as UC Merced Inaugural Class Graduates

**F**our of the 28 charter members of **ETA XI CHAPTER, UC Merced**, graduated as members of the inaugural class. This contemporary, sweeping, four-year-old campus of the University of California system sits in California's Central Valley—the Gateway to Yosemite—where most students study biology and environmental sciences. Commencement speaker, First Lady Michelle Obama, described UC Merced students as those who “know how to get what they want.” She charged the class of 2009 “... as the students who helped build this school ... to make your legacy a lasting one...” The charter members of Eta Xi, looking to the legacy of our Kappa Founders, accomplished the charge of the first lady. She asked them to “Dream big, think broadly about your life, and ... make giving back to our community a part of that vision.”

In May 2008, a group of innovative women petitioned Kappa for membership and, following Fraternity Council's vote, Eta Xi Colony began to grow. Delta Delta Delta and Delta Gamma joined Kappa in the university's first sorority recruitment.

Kappa welcomed a new member class of 28, and on April 25, 2009, these women became the charter members of Eta Xi Chapter. Simultaneously, the brand new **CENTRAL VALLEY ALUMNAE ASSOCIATION** was born. This group of Kappas, residing from Stockton to Fresno, actively supports Eta Xi.

The installation team, led by Fraternity President **DENISE RUGANI, UC Davis**, joined chapter members from *Fresno State, UC Berkeley, UC Davis, Stanford, UC Santa Cruz, Santa Clara*, as well as **EMILY LANGDON NIES, UC Davis**, Coordinator of Chapter Development, and **PI PROVINCE** alumnae for dessert and a gift presentation at the home of faculty adviser **CATHERINE REDIG KNIAZEWYCZ, UC Berkeley**.

Kappa Kappa Gamma and Delta Gamma observed concurrent installations at a brunch on campus on April 25. Campus administrators, families, friends and newly installed members of Delta Gamma and Kappa joined in the celebration. Associate Vice Chancellor, Dr. Charles Nies, Sigma Chi, and father of two Kappa legacies, challenged Kappas at UC Merced and across the continent:





Four **ETA XI**, *UC Merced*, 2009 graduates display their Kappa pride.



Leadership Consultants **ALEX CAMPION**, *South Carolina*, and **ANGIE MCNEIGHT**, *Emory*, celebrate **ETA XI** Bid Day with **JOANIE COOK COHEN**, *Colorado*, Extension Chairman.

*In 1870, Kappa Kappa Gamma set fire to a movement among college women, a movement that has not lost its relevancy in today's academy. It is my hope that your fraternity will continue to push the boundaries of age-old walls and will blow the glass off the ceiling that has limited women. Fleur-de-lis now have an identifiable role on our campus landscape—may this tradition of empowering women inspire our students and positively impact our campus community.*

Eta Xi will surely reflect the perseverance of our Founders and will enthusiastically meet the challenges offered by the campus community and the world today.

## Association and Chapter Anniversaries

Congratulations to the following alumnae associations and chapters celebrating milestone anniversaries this year. For contact information, visit [www.kappa.org](http://www.kappa.org) or call Fraternity Headquarters at 866-KKG-1870.

### August

North Gold Country,  
Calif., 8/4/2004—5 years

### October

Vancouver British Columbia, B.C.,  
10/5/1929—80 years

Sandhills, N.C., 10/8/1999—10 years

Westchester, N.Y., 10/13/1934—75 years

Eta Epsilon, *Johns Hopkins*,  
10/23/1999—10 years

### November

Lafayette, Ind., 11/6/1919—90 years

Monmouth, Ill., 11/14/1934—75 years

### December

Gamma Omega, *Denison*,  
12/6/1929—80 years

Grapevine-Colleyville-Southlake, Texas,  
12/7/2004—5 years

San Angelo, Texas, 12/26/1944—65 years

## Welcome!

The Fraternity is pleased to announce the following new alumnae associations: **CENTRAL VALLEY** (Calif.) in Pi South Province, and **EASTERN NORTH CAROLINA** in Nu East Province. Visit [www.kappa.org](http://www.kappa.org) for contact information.



## General Convention Sponsorships

*General Convention costs have escalated at a rapid pace and since it is the desire of the Fraternity to keep the cost of attending Convention affordable to as many members as possible, the Fraternity has approved sponsorship of the 2010 and 2012 General Conventions by Geico Insurance Company (a subsidiary of Berkshire Hathaway, Inc.). In exchange, Geico will send five annual mailings, at their expense, to Kappa's alumna membership. To opt out of receiving these mailings, contact Fraternity Headquarters at 866-554-1870 or e-mail [kkghq@kkg.org](mailto:kkghq@kkg.org) by September 15, 2009. Additional sponsors include MJ Insurance, Herff Jones and Mid First Bank. Convention sponsorships are still available. For more information e-mail [kkghq@kappa.org](mailto:kkghq@kappa.org).*



The Arizona Biltmore in Phoenix will be the site of the 2010 General Convention, June 23-27. Look for registration materials in Spring 2010.

# Dues-Paying Members Sustain the Heart of Kappa

Dues Direct (formerly Pay It Forward) is growing and now offers online dues payment directly to Fraternity Headquarters. If you have already paid dues to an alumnae association after July 1, (the fiscal year is July 1 - June 30), you are a member in good standing and no further payment is necessary. If you do not have an alumnae association, you may support the Fraternity directly through the Dues Direct program.

## Why Join Dues Direct?

You will become a member in good standing with the Fraternity and have the pleasure of knowing that you are playing a part in continuing our Tradition of Leadership.

### Your dues support:

- ▶ Chapters and alumnae associations
- ▶ Future growth of the Fraternity
- ▶ Headquarters operations
- ▶ Technology including the Web site and forums
- ▶ Educational opportunities for collegians and alumnae
- ▶ Publication of *The Key* magazine

**Membership in Kappa is a value far beyond collegiate days. Alumna membership provides:**

- ▶ Quarterly *Historically Speaking* subscription
- ▶ Quarterly Fraternity updates
- ▶ Networking
- ▶ Leadership development opportunities

Membership in our Fraternity is for a lifetime. Please consider being a Dues Direct member of Kappa so that you can say, "Kappa can count on me!"

To join Dues Direct, visit [www.kappa.org](http://www.kappa.org). Access the Web site by using your membership number on the back of this issue of *The Key*. Or, mail in the coupon below.

If you would like to organize an alumnae association in your area, please e-mail SUSANNE WOLFF VANDER

HEYDEN, Washington State, Director of Alumnae, at [svanderhe@aol.com](mailto:svanderhe@aol.com). If you would like to be contacted by an existing alumnae association, please see Page 11 in this issue for the Owl Out on a Limb information.



SUSANNE WOLFF VANDER HEYDEN, Washington State, Director of Alumnae



## Dues Direct

***Kappa Can Count on Me!***

Mail to: Kappa Kappa Gamma  
Fraternity Headquarters  
P.O. Box 38 • Columbus, OH 43216-0038

Name (first, maiden, last) \_\_\_\_\_

Address \_\_\_\_\_

City \_\_\_\_\_ State/Province \_\_\_\_\_ Postal Code \_\_\_\_\_

E-mail \_\_\_\_\_

Chapter & Initiation Year \_\_\_\_\_

Dues payment (\$17) \$ \_\_\_\_\_ Annual Loyalty Fund contribution (optional) \$ \_\_\_\_\_

Total Enclosed \$ \_\_\_\_\_

**Please make your check payable to Kappa Kappa Gamma Fraternity.** (Dues are not tax deductible, however, your donation to the Kappa Kappa Gamma Foundation Annual Loyalty Fund will be considered a federal tax deduction.)

Please charge my credit card ☐ VISA ☐ MasterCard ☐ American Express

My credit card number is \_\_\_\_\_ Expiration Date \_\_\_\_\_

☐ I am interested in reorganizing my alumnae association.

Signature: \_\_\_\_\_

### Headquarters Welcomes Interns

**APRIL BAUM**, *Hillsdale*, is the Catherine Schroeder Graf Heritage Museum Intern for the summer of 2009. A history and classical studies double major, April received her bachelor's degree in May and served her chapter as Education Chairman. She is working closely with **KYLIE TOWERS**, *Simpson*, Archivist/Curator. This internship is funded by the Kappa Kappa Gamma Foundation.

The 2009 Fraternity Headquarters intern is **LAURA VINCI**, *Creighton/Kansas*, a pre-journalism major. At Creighton University, Laura was a student admissions representative and an "Up 'til Dawn" fundraiser committee member. Upon transferring to Kansas University, Laura was appointed the Panhellenic newsletter editor.

Both internships are 12-week programs and open to all Kappas. Applications are due February 1.



2009 Interns **APRIL BAUM**, *Hillsdale*, and **LAURA VINCI**, *Creighton/Kansas*.



Field Representatives train at Fraternity Headquarters.

### Work for Kappa!

Interested in serving as a Kappa Kappa Gamma Field Representative after you graduate? Applications for Leadership Consultant positions and Chapter Consultant scholarships are due November 20, 2009, for those interested in serving during the 2010-2011 school year. Visit [www.kappa.org](http://www.kappa.org) to apply. For further information, contact **BETH SHARP**, *Penn State*, Chairman of Field Representatives, at [bsharp@aerosoles.com](mailto:bsharp@aerosoles.com).

### Keys Overseas

Keys Overseas is a free online forum where Kappas who are living outside the United States and Canada can meet, get to know one another and get instant access to shared messages, photos, group events and more.

There are many ways to use this forum—you could offer and receive suggestions on travel, hotels and restaurants, as well as places to live. You will get a sense of security with this information coming from a Kappa sister. If you find someone in the same town, you could invite her for a cup of coffee! But most of all, it is a secure means to stay connected to Kappas no matter where you are.

To join Keys Overseas, send an e-mail to **CAROLINE POOLE CAMERON**, *Florida State*, at [camerocaroline@gmail.com](mailto:camerocaroline@gmail.com).





The **LONDON ALUMNAE ASSOCIATION** met this spring at Rocket Mayfair in London with Keys Overseas, the affinity group for undergraduates, graduate students and alumnae. The **LONDON ALUMNAE ASSOCIATION** meets quarterly and communicates through the Kappa Forums, Facebook and Evite. Keys Overseas is for Kappas living outside the United States and Canada and is coordinated through the Director of Chapters and Director of Alumnae.

## Kappa Connections Abroad

The **LONDON ALUMNAE ASSOCIATION** met at Rocket Mayfair restaurant for a joint meeting with Keys Overseas, the affinity group for undergraduates, graduate students and alumnae abroad.

President **EMILY MERRILL**, *Pepperdine*, and former President **LIZ LIENTZ MACFADYEN**, *Vanderbilt*, planned the event using Evite. About 20 Kappas attended the event, which included a meet-and-greet and dinner.

Kappas who participated ranged from women who had attended schools across the United States and Canada to those who were finishing up graduate school to women working in a variety of professions. Some had only been in London for six months, while one had been there for 40 years. It was a great cross-section of experience and interests. The London Kappas were having so much fun meeting each other and making connections, it was hard to break up the party to sit for dinner!

"The event went very well and it's great that some of the women are excited for the next one and even offered to help plan!" Emily says.

Having heard about the event at the Alpha/Rho Province Meeting, Fraternity Finance Committee member **JOAN MCILROY BRIGGS**, *Indiana*, was delighted when her London vacation enabled her to join the London group during the meet-and-greet.

"The event was terrific," says Joan. "What a wonderful group! I was so pleased that the timing was such that I could meet them."

The group communicates through the Facebook group Kappas Across the Pond (London) and on the Kappa Forums: Keys Overseas. The association plans to meet quarterly this year. By coordinating between the association and Keys Overseas, the alumnae will be excellent resources for the undergraduates far from home.

If you're headed "across the pond" for school, work or fun, look up the association and see where they are meeting. You never know the connection you'll make!

## Protect Your Badge



To ensure that your membership badge is properly protected, please fill out the form to the right and keep it with your badge or personal papers. This simple step will help make sure that your precious badge, an official emblem of the Fraternity, does not fall into the possession of a nonmember who may not realize its significance.

## Drop Us an E-mail

Fraternity Headquarters is eager to increase the effectiveness of our electronic communication. If you or a Kappa friend or relative have not submitted or updated your e-mail address, please do so today. If you have your member number (on the mailing label of *The Key*) then you can update your information at [www.kappa.org](http://www.kappa.org) or, contact Headquarters at [kkghq@kkg.org](mailto:kkghq@kkg.org) or 866-KKG-1870 for your member number. Please help us stay connected to you and Kappa sisters around the world.

## In Memoriam Reminder

When reporting a deceased member to Fraternity Headquarters, the Membership Services Department must receive her full name (including maiden), address, chapter/college, year of initiation or graduation, date of death, and your name, phone number and relationship to the deceased. Copies of obituaries also are appreciated. Receiving this detailed information helps to prevent errors in the "In Memoriam" list.

*The Key* apologizes that full obituaries are not published due to space limitations. Only former Fraternity Presidents are profiled.

## Kappa Kappa Gamma Badge Disposition Instructions

I, \_\_\_\_\_,  
as a member of Kappa Kappa Gamma, request that  
my membership badge, a one-inch golden  
key bearing the Greek letters KKG and AΩO, be:

(Check one)

\_\_\_ returned to Kappa Kappa Gamma Fraternity  
Headquarters (530 E. Town St., P.O. Box 38,  
Columbus, OH 43215).

\_\_\_ left to my sister, daughter, granddaughter,  
great-granddaughter or other direct legacy  
connection.

\_\_\_ left to \_\_\_\_\_ chapter to  
be used as an award badge for \_\_\_\_\_.

\_\_\_ left to \_\_\_\_\_ alumnae  
association to be used as \_\_\_\_\_.

\_\_\_ buried with me.

Date: \_\_\_\_\_

Member Signature: \_\_\_\_\_

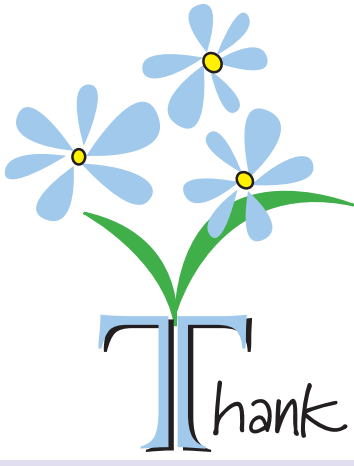
**Keep with your badge or legal documents.**



full-service event planning  
that is always in good taste

legendary events for all the right reasons

seattle | scottsdale | worldwide  
t 877.389.1382 | [www.goodtasteevents.com](http://www.goodtasteevents.com)



Thank you  
to all of you who order magazines  
through Rose McGill.  
We will contribute more than \$10,000  
to the Rose McGill Fund of the  
Kappa Kappa Gamma Foundation.

*Please continue to order!*

Online: [www.kappa.org/rose](http://www.kappa.org/rose)  
Call: 800-KKG-ROSE  
E-mail: [mfiggins@kkg.org](mailto:mfiggins@kkg.org)  
Fax: 614-228-7809

**Rose McGill**  
Magazine Agency



## Attention "Snow Birds" and "Sun Birds"

If you would like to visit an alumnae association and meet Kappas while you are traveling away from your primary home, please contact the "Owl Out on a Limb" Chairman at [kappaowls@kkg.org](mailto:kappaowls@kkg.org). She will direct you to the nearest alumnae association so you can enjoy Kappa activities all year round.

## Are You an Owl Out on a Limb?

### Continue the Kappa Experience...

*by enjoying the friendships and fun that come with participation in an alumnae association.*

Please provide the following information via e-mail to [kappaowls@kkg.org](mailto:kappaowls@kkg.org) or complete the form below and send it to CAROLINE POOLE CAMERON, *Florida State*. She will put you in touch with the alumnae association nearest you or with your Province Director of Alumnae.

**YES! I want to know more about Kappa Kappa Gamma alumnae association opportunities near me!**

Name: \_\_\_\_\_ Street Address: \_\_\_\_\_

City: \_\_\_\_\_ State/Province: \_\_\_\_\_ Postal Code: \_\_\_\_\_

Telephone: \_\_\_\_ / \_\_\_\_\_ Chapter/University: \_\_\_\_\_ Init. Date: \_\_\_\_ / \_\_\_\_

☐ New Address? ☐ New to Area? E-mail: \_\_\_\_\_

Last Address: \_\_\_\_\_

☐ I would like to work with a chapter in an advisory position.

Mail to CAROLINE POOLE CAMERON, *Florida State*, 1612 Leaf Cove, Jonesboro, AR 72401 ([kappaowls@kkg.org](mailto:kappaowls@kkg.org)).





## Legacy Policies

- Legacies shall be voted upon at a time determined by the chapter and after the members have had an opportunity to meet the legacy.
- If a legacy's reference has been received at least 10 days prior to the first day of formal Recruitment, acknowledgement shall be sent to the legacy's closest Kappa relative (mother, sister, grandmother or great-grandmother).
- To protect a legacy's privacy, chapters are not expected to notify a legacy's closest Kappa relative if the legacy is not invited to a recruitment event or extended a bid.



## Legacy Notification Form

To assist our chapters in identifying Kappa legacies, please complete this form and send it to the chapter address listed in the membership directory at [www.kappa.org](http://www.kappa.org).

**Please note: This notification does not replace a Membership Reference Form or letter of reference.**

This is to advise you that my ☐ daughter ☐ sister ☐ granddaughter ☐ great-granddaughter will be attending \_\_\_\_\_ this year.  
College or University

### Member Information

First Name	Maiden	Last Name
Street Address		
City	State/Province	Postal Code
Chapter	Initiation Date	
Telephone	E-mail	

### Legacy Information

First Name	Middle	Last Name
Street Address		
City	State/Province	Postal Code
High School Attended		
Academic Class Entering		

# membership recruitment



## MEMBERSHIP REFERENCE FORM (To be used by members of Kappa Kappa Gamma only)

ATTACH  
PHOTO  
(OPTIONAL)

Name of Potential Member \_\_\_\_\_  
(Last) (First) (Nickname) Attending \_\_\_\_\_  
(College/University)

Home Address \_\_\_\_\_  
(Street Address) (City) (State) (Zip Code)

Home Phone Number ( ) \_\_\_\_\_ Home E-mail Address \_\_\_\_\_

Name of Parent(s) or Guardian(s) \_\_\_\_\_

High School \_\_\_\_\_  
(Name) (City) (State) (Zip Code)

Class Size \_\_\_\_\_ Rank \_\_\_\_\_ GPA \_\_\_\_\_ SAT/ACT (if known) \_\_\_\_\_ Year Graduated \_\_\_\_\_

School(s) attended after high school, if any \_\_\_\_\_  
(Name) (City) (State) (Zip Code)

GPA \_\_\_\_\_ Number of Terms Completed \_\_\_\_\_ Class: Fr. ☐ So. ☐ Jr. ☐ Sr. ☐

*Fraternity Bylaws' academic requirements are as follows: A woman student matriculated in any college or university having a chapter of Kappa Kappa Gamma may be elected to membership in this Fraternity provided that she has demonstrated academic interest and has attained at least a "B" average or its equivalent under any other grading system from high school or at least a "C+" average or its equivalent under any other grading system for the previous completed term as a full-time student at a college or university. In extraordinary cases, the chapter may petition the Director of Membership for an exception.*

**Kappa Kappa Gamma Legacy:** ☐ Sister ☐ Mother ☐ Grandmother ☐ Great-grandmother

Name \_\_\_\_\_  
(Last) (First) (Nickname) (College/University Attended)

Address \_\_\_\_\_  
(Street Address) (City) (State) (Zip Code)

Phone Number ( ) \_\_\_\_\_ E-mail Address \_\_\_\_\_

Other NPC Affiliations \_\_\_\_\_

**Please check one of the following:**

- ☐ Close KKG connection (i.e. aunt, cousin, stepmother, stepsister, other) \_\_\_\_\_ years
- ☐ Personally known the potential member for \_\_\_\_\_ years
- ☐ Personally known the potential member's family for \_\_\_\_\_ years
- ☐ Do not personally know potential member; information from \_\_\_\_\_

**I hereby endorse this potential member for membership in Kappa Kappa Gamma.**

(Signature) \_\_\_\_\_ (Print First Maiden Last Name) \_\_\_\_\_ (Date) \_\_\_\_\_

(Street Address) \_\_\_\_\_ (City) \_\_\_\_\_ (State) \_\_\_\_\_ (Zip Code) \_\_\_\_\_

Phone Number \_\_\_\_\_ Chapter \_\_\_\_\_ Initiation Date \_\_\_\_\_

E-mail: \_\_\_\_\_

Attach school, athletic, community and leadership activities and honors. Comment on special interests, talents and work experiences.

☐ **PLEASE SEND AN ACKNOWLEDGEMENT THAT MY REFERENCE HAS BEEN RECEIVED IN THE SELF-ADDRESSED, STAMPED ENVELOPE I HAVE INCLUDED WITH MY REFERENCE FORM.**

# Hopes, Dreams

## *Legacies Reflect on Membership*

A daughter, sister, granddaughter or great-granddaughter goes off to college, excited about new horizons, new friends, living conditions, studies ... the possibility of Greek life.

While some have no knowledge of what it means to join a sorority, others have heard from relatives about wonderful experiences and treasured lifelong connections. What does a legacy expect? What do her relatives expect will be offered to her? How is the chapter expected to greet her?

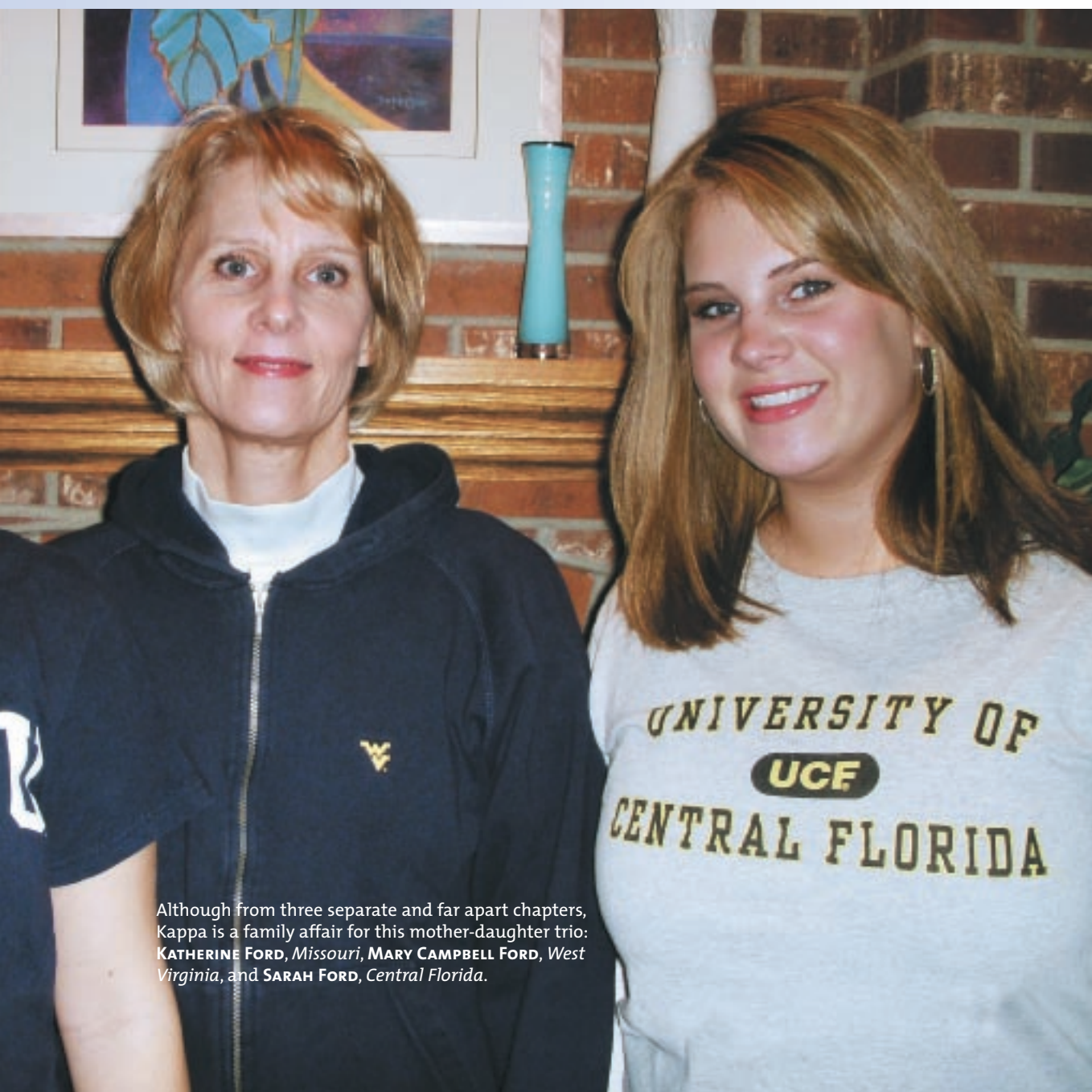




# & Expectations

## *Recruitment*

—By LOIS CATHERMAN HEENEHAN, *Aldelphi*



Although from three separate and far apart chapters, Kappa is a family affair for this mother-daughter trio: **KATHERINE FORD**, *Missouri*, **MARY CAMPBELL FORD**, *West Virginia*, and **SARAH FORD**, *Central Florida*.

## *We asked Kappa legacies what they thought of the legacy as the individuals who tell their stories.*



Sisters **KATIE** and **ANNIE VAN ALLEN**, both *Kansas*, anticipate the next two Van Allen sisters who will go through Recruitment in the future—Christie and Betsy. While they are excited about the possibility of a family of Kappas, they also appreciate that it is an individual decision and try to keep it “no pressure.”

**ANNIE VAN ALLEN**, *Kansas*, was not a legacy but wanted to “go Greek” knowing how her father enjoyed his ongoing friendship with his Phi Gamma Delta brothers. Now a senior at *Kansas*, Annie is the oldest of four girls and has seen her sister Katie go through Recruitment. Knowing that she and her sisters are very different from each other, Annie hoped to share her “amazing experience” in Kappa with Katie but knew Katie would “end up where she was meant to be.”

Annie believes that Omega Chapter takes legacies seriously, recognizing that they deserve extra attention and that Kappa is bigger than just one chapter. Nevertheless, Omega had nine more legacies going through Recruitment than could be pledged if their whole class were legacies. She says, “Ensuring that we have a pledge class that will be happy in Kappa and contribute to Kappa is the most important aspect [of Recruitment].” **KATIE VAN ALLEN** says she felt more nervous since other groups were aware of her relationship with Annie—one even called her Annie during Recruitment. They expected she would choose Kappa and did not see her as an individual.

Attitudes at home are important to the Van Allens. Annie says her mom is enthusiastic about the Greek system and Kappa. Having valued her mother’s unbiased opinion during her own Recruitment experience, she was glad that her mother remained that way for Katie. Christie, the next Van Allen, will go through Recruitment next fall. She is feeling

more pressure to want to be a Kappa, a chain that Annie feels has built despite efforts to keep open minds. Betsy, the youngest, will go through Recruitment when Christie is a senior and Betsy is convinced she will be a Kappa.

.....  
**JANE HERRING McLARTY**, *Mississippi*, is one of the 11 charter members of Delta Rho Chapter. Years later, when her older daughter went to school and then five years later her younger daughter as well, Jane was very nervous about the possible outcome. “Rush,” as it was called at that time, carried on through a week and to keep her mind off what might be happening at the Delta Rho house, Jane made “seven-day pickles.” Her older daughter chose Chi Omega, and her younger daughter, Hermine, chose Kappa but ever since those pickles have been known as “rush week pickles.” Jane supported both daughters in their choices.

.....  
**JACQUELINE (JACQUIE) MARTINEZ FERRALL**, *Wyoming*, had two sons but it was her granddaughter who was the legacy. She was careful to avoid influencing Keavy’s choice and despite strong interest from two other groups, **KEAVY FERRALL** pledged **GAMMA OMICRON**, *Wyoming*. Now three other granddaughters are interested. Jacquie recalls Keavy’s Initiation as beautifully done and says the chapter members were so impressive. “Two members offered to come get me so I wouldn’t have to drive over the mountain.” Keavy made her own decision to go Greek and then to choose Kappa. Jacquie believes that it is important for a chapter to carefully consider a legacy because of the Kappa knowledge she has but understands that there must be a good fit between the chapter and the legacy.

.....  
more on Page 18  
▼



# *Recruitment experience. Each experience is as unique*



**ROBYN RODOCK ABENS**, *John Carroll*, admires her tiny legacy, Mia Abens.

## **Who Is a Legacy?**

—By **LIZ RUNKLE**, *Monmouth*

I do not ask you to pledge my daughter ... I do not ask her to pledge Kappa. I would not want her to become a part of your chapter if you and she were not comfortable together. I do ask you to get to know her, to try to pick her out among the crowd of eager, polished, hopeful young faces. I ask that you take an extra moment to see beyond her shyness and her tension, and to look into her heart.

I believe in Kappa and all that it stands for. I have lived my life with its ideals as a guiding star. I have tried to teach my daughter to find beauty and goodness. Those are seeds sown within her soul ... they are there ready to blossom.

Did I recruit my own daughter? If singing a Kappa song softly, like a lullaby, is recruiting, then yes, I did. If answering her small girl questions, “Mommy, can I be a Kappa, too?” with a heartfelt, “Yes, child, I HOPE so” is recruiting, then yes, I did. If living and loving Kappa every day for more than 20 years is recruiting, then yes, I did. I will sit by my telephone and wait for her call. I pray that I will hear a voice, happy and excited, saying, “Mom, I pledged Kappa!”

I will rejoice with her whichever sorority she pledges, and I will also always love Kappa, and yes, I hope that she will have the opportunity to love Kappa too. The decision rests with her and with you. Please make it with care.

Who is a legacy? She is the daughter I held in my arms ... and she is the daughter whom you may someday hold in your arms too.





**SELENA STALEY MYERS**, Akron, Gamma South Province Director of Chapters, is proud to announce to her friends, "Meet the newest Kappa legacy!"

**SELENA STALEY MYERS**, Akron, is Gamma South Province Director of Chapters. Before her first baby was born not long ago, she sent copies of the sonogram to her Kappa friends saying, "Meet the newest Kappa legacy." Selena looks on her Kappa volunteer work as the one thing in her entire life "that is all mine and that I do to make myself happy." Having helped to turn her chapter around as an active and as an adviser, she crosses her fingers that Ava will make the choice to join an organization that she is equally passionate about.

Selena's aunt is the executive director of the Foundation for Alpha Gamma Delta, where Selena had her heart set on joining, though her aunt told her to go where she felt most comfortable because she was making a decision that would last a lifetime. Selena felt most comfortable at the Kappa house. She recognizes that Recruitment is different on other campuses but appreciates that there is a very cohesive Panhellenic structure at Akron.

Following the rules of the *Green Book* (NPC Manual) is first and foremost. Some mothers, grandmothers and sisters expect their legacy will be given a bid automatically because of legacy status, which is impossible when legacies in Recruitment outnumber the spaces available in quota.

Selena also realizes, "It is hard to understand and accept that a relative might not see Kappa as the best fit for her or vice versa. There is a disconnect with the fact that Recruitment is a mutually selective process."

.....  
**HERMINE McLARTY GRANBERRY**, Mississippi, served as chapter Membership Chairman and President and now has two young daughters of her own, and hopes they will be Kappas some day. She recalls that her mother did not pressure her, and she in turn tried to go through Membership Recruitment with an open mind. She treasures the photo of herself and her mother with big smiles on Bid Day. "Having that relationship with Mama was priceless," Hermine says. "When [my daughters'] time comes I hope I can hide my anxiousness and hopefulness as well as my mother did and let my girls experience it for themselves with no pressure. But at the same time, I would hope that the actives at any chapter, not just Delta Rho, would recognize and honor my girls' positions as legacies in that they come with an established loyalty to Kappa that would make them good members."



**HERMINE HERRING McLARTY GRANBERRY**, Mississippi, **JANE HERRING McLARTY**, Mississippi, Hermine Herring Granberry, and Clara Jane Granberry.

## Passing the Golden Key from One Generation to the Next

SUSANNAH ERCK HOWARD, *Florida State*, knows first-hand why the legacy connection is so special. A legacy herself, Susannah was thrilled when her daughters, Carla and Amy, joined Kappa Kappa Gamma.

“My paternal grandmother was a Kappa at **IOTA**, *DePauw*, and was initiated in 1916. She was President of the chapter her senior year. She even came to my Initiation at **EPSILON ZETA**,

*Florida State*, and pinned my badge on me. She bought me a diamond key, and had her name and mine engraved on the back. I treasure that key! I had an opportunity while I was on Fraternity Council to attend a Province Meeting that was held at *DePauw*, and the chapter allowed me to go through their archives and I found my grandmother mentioned several times in their old minute books. What a thrill that was!”

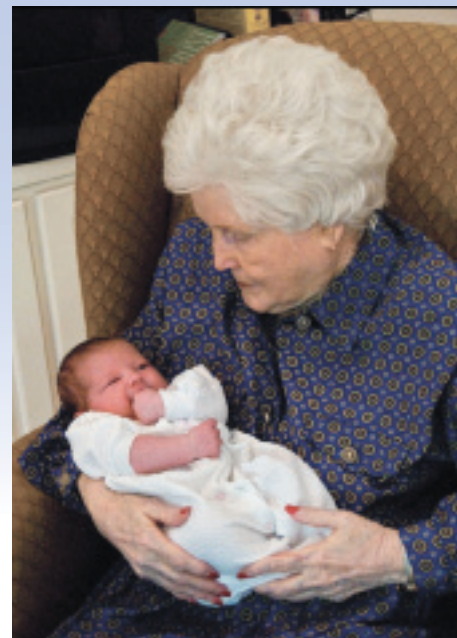


**AMY HOWARD CHEEK, CARLA HOWARD LUGS**, both *Georgia Southern*, and **SUSANNAH ERCK HOWARD**, *Florida State*, celebrate Amy's wedding.





Three generations of Kappas enjoy a rare outing together watching a Vanderbilt-Kentucky basketball game. **RISSA HIERONYMUS ARTERBERRY**, Kentucky, center, is flanked by her daughter, **JULIA ARTERBERRY WESLEY**, Kentucky, and granddaughter, **SUSAN WESLEY**, Colorado.



A great-grandmother cherishes her granddaughter. Legacies carry a special loyalty for Kappa and bring a unique perspective to chapters.

*Our large, devoted family includes 18 Kappas—all of whom were influenced by my remarkable mother's love for Kappa Kappa Gamma.*

**—ANN GRIMES THOMPSON, Alabama**

Sisters **MANDY ALBERT RICHARDSON** and **KARA ALBERT**, both Westminister, share their dedication to Kappa.




Mother, **PATTI NIXON FABRIS**, Mississippi, with her two daughters, **MARY FABRIS** and **MALLIE FABRIS**, Mississippi.


.....

A legacy has a heritage—a built-in loyalty and an understanding of Greek life and the responsibilities of membership. She deserves thoughtful consideration by the chapter. In turn, she deserves a fair chance at other chapters on campus. The Fraternity cannot guarantee a bid for every legacy. Nor can anyone guarantee that every legacy will choose Kappa. Sometimes the number of legacies going through Recruitment exceeds the quota open to the chapter.

What every legacy should expect, what every relative and chapter should expect, is that a legacy will be given thoughtful consideration for the strength she brings from her heritage and the unique contributions she will make from being who she is as an individual.

Membership Recruitment is the shared responsibility of alumna and collegiate members. It is the alumna's responsibility to recommend qualified women for membership and it is the chapter's responsibility to select a new member class. 



A photograph of three women of different ages standing in front of a brick building with large windows and trees. The woman on the left is an older woman with white hair and glasses, wearing a red top with a black and white patterned collar. The woman in the center is a middle-aged woman with short blonde hair, wearing a white top and a necklace. The woman on the right is a younger woman with short brown hair, wearing a light blue top. They are all smiling and looking at the camera.

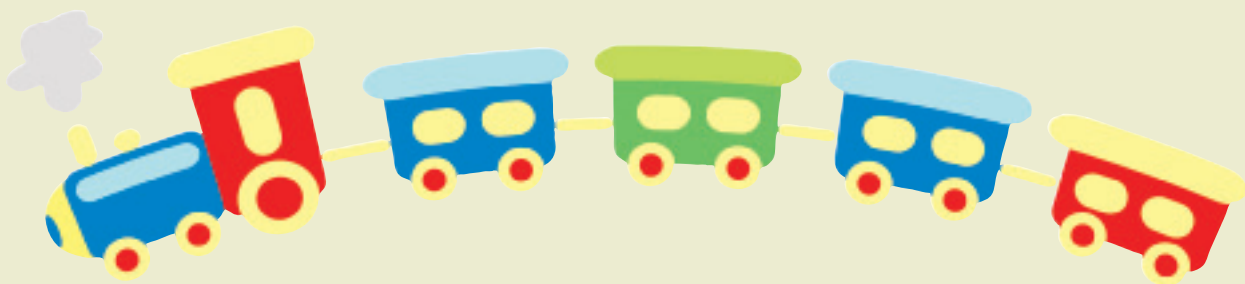
Three generations of Kappas celebrate their membership in Kappa: **JANE TOURNER CURRY**, *Indiana*, **JENNY WHITTAKER GUTHERIE**, *William and Mary* and **SUE CURRY WHITTAKER**, *DePauw*.

## Sharing Your Legacy Story

To have the opportunity to pass on the legacy of Kappa Kappa Gamma to a sister, daughter or granddaughter is truly an honor. Since our founding in 1870, there are countless legacy stories—stories that will now come to life through a multi-dimensional legacy project created by the Fraternity. Starting in all chapters this fall, an e-learning course will enhance the appreciation and value of our legacies by demonstrating the importance of our legacy policies through real-life stories, videos and photos.

### ***How can you be a part of the legacy project?***

Within your chapters and alumnae associations, share stories about Kappas who have experienced the joy of being a legacy and those who hope to pass on the legacy of Kappa. By sharing your stories you can ensure an appreciation for past and future legacies.



# ALL Aboard! Reading Is Fundamental

**Collegians and alumnae work together to construct a Reading Railroad.**

—By **CHRISTINE VERGES GACHARNÁ**, *Oregon*

Like any ordinary day, 8-year-old Dominic enters the Boys & Girls Club of Greater Washington, D.C., after school. But unlike other ordinary days, on this day Dominic is handed a passport to board the Reading Railroad and volunteers guide his imagination from downtown D.C. to New York City, Chicago, New Orleans, San Francisco and the Grand Canyon. The destinations are woven together by storybooks, designed to transport 80–100 children across an incredible world of reading.

“Each station had poster board pictures and descriptions of what the city is known for,” explains **SAMANTHA MASSAU**, *Bowling Green*, a Washington, D.C.-area alumna who helped plan the successful 2008 event. “At every station, a Kappa read a story tied to the location for 10–15 minutes, and then we stamped the children’s passports for visiting and they rotated to another destination. At the end of the day, the children could show their passports, and those with all six destination stamps got to pick out a free book. Of course, they all got to pick out a free book even if they didn’t make it through all the stations!”

A craft area kept the children busy with hands-on activities all tied to reading. Children aged kindergarten through middle school decorated cloth book bags, drew pictures from stories and created bookmarks, all to take home with them. By evening, the event turned into a pizza party, and one of the members of Gamma Chi, *George Washington*, dressed in a Dr. Seuss costume, read to the children while they ate.

This event marked the first in a new tradition of partnership—collegians and alumnae joining forces to promote Kappa’s official philanthropic partner, Reading Is Fundamental, the nation’s oldest and largest nonprofit children’s literacy program in the U.S.

“We had been planning our own thing, and they had been planning theirs,” Samantha says of the alumnae

association and the local chapter. “We started talking and decided what a great idea to partner up!”

“Planning the event was the most important aspect of its success,” Samantha says. By targeting a venue where the children were already gathered, the Kappas needed only to focus their efforts on the event, rather than worrying about promotion or participation.

“Think outside the box,” Samantha says. “I never would have thought about having it at the Boys & Girls Club at first. But one night at the gym, I was playing dodgeball with a friend, and he was telling me about how he volunteers at the Boys & Girls Club, and that’s how it all came together,” explains Samantha.

## Making It Happen

From Samantha’s idea, Gamma Chi Philanthropy Chairman, **CIARA MONCHEK**, initiated the coordination and planning with the Boys & Girls Club, and her chapter to get a firm date scheduled on both calendars.

The Gamma Chis collected hundreds of books with a campus book drive. At their September potluck event, the alumnae association held a book drive in addition to collecting donations to purchase books from RIF. While RIF guidelines require that the books given to children at events be brand new, the gently-used donations were handed out to any child who wished to stuff their book bags with more.



Of the six Reading Railroad stations, chapter members designed three and alumnae designed three. “Everybody worked,” Samantha says. “Most of the chapter members do not have cars on campus, so alumnae drove them to get the arts and crafts supplies. Eight alumnae were able to get off work to attend the after-school program event, and others came after work to help clean up.”

As the Philanthropy Chairman for Gamma Chi during the February 2009 event, sophomore business major **SONDRA TUSA** chose to keep the Reading Railroad theme intact, making only minor changes to liven up the event for repeat travelers. On the Chicago stop, children read a story about Barack Obama, wrote a letter to the President and had their picture taken with a life size cut-out; in New York, they decorated play bills; in New Orleans, they decorated Mardi Gras masks and donned beads; in Washington, D.C., they colored bookmarks in the shape of the Washington Monument.

“The children at the event were smart, brave children,” Sondra says. “They all came from not-so-prominent areas of D.C. and through their letters to President Obama, you could tell their families were definitely struggling.”

The children could not keep their hands off the books. The Gamma Chis collected approximately 1,500 books, and children took home as many as they could carry.

“Choosing the books was hard for some and easy for others,” Sondra says. “Some knew what books they were looking for and some just picked up what they thought looked cool from a pile. We sorted the books on the table based on age groups so kids could look through the harder books if they liked or, if they were younger, they could look through the easier, lower-level reading books.”

## The Idea Catches On

The overwhelming success of the partnership between the Washington, D.C./Maryland Alumnae Association and Gamma Chi Chapter of George Washington University sparked several similar partnerships across the nation between Kappa alumnae and collegiate members. In addition to benefiting RIF and local children, the participants report a renewed bond between younger and older Kappa generations.

“Even if some of our alumnae do not have a lot of time,” Samantha says, “many of them were able to show up for a shift during planning. Some came to more than one. And many more were able to send a small donation to help us buy books.”

Sondra Tusa sums up her involvement with RIF’s Reading Railroad as one of the best experiences of her life.

“I think that children are all curious in whatever aspect of life that interests them,” Sondra says. “Every human has some curiosity—books, cars, sports or the human mind itself. As college students, we are given such a broad range of classes to take and so many majors to pick from. Some of these children took home their first book that day, and hopefully it will spark something in their mind—an interest, a desire to be a little different and grow a little more.”

Sondra describes watching one of her Kappa sisters console a little girl who was crying because she was sad that Reading Railroad had ended and it was time to go home, and later, reading one of the letters to President Obama where a child wrote simply, “Thank you for the Kappas.”





# Why RIF?

*In 2004, Kappa Kappa Gamma adopted Reading Is Fundamental, Inc., the nation's oldest and largest nonprofit children's literacy organization as its partner in philanthropy. RIF's priority is to serve at-risk and under-served children and families through literacy programs that motivate youth to read.*

Founded in 1966, Reading Is Fundamental prepares and motivates children to read by delivering free books and literacy resources to children and families. RIF's highest priority is reaching under-served children from birth to age 8, the developmental years that research shows the strong foundation in reading is most critical.

"Our relationship with Kappa is unique," says Rachel Hutt, Manager of Special Projects at RIF. "Both are far-reaching organizations with people and programs across many different communities, and Kappa can approach from both the collegiate and alumna perspective. Kappa has the people on the ground who have the ability to get directly involved in college, and we hope that involvement continues as they graduate and become members of alumnae associations."

RIF provides 4.5 million children with 16 million new, free books and literacy resources each year. RIF serves children and families in every state, the District of Columbia, and U.S. territories in programs that operate in schools, libraries, community centers, child care centers, Head Start and Even Start centers, hospitals, migrant worker camps, homeless shelters and detention centers.

All RIF programs combine three essential elements to foster children's literacy: reading motivation, family and community involvement, and the excitement of choosing free books to keep.

"In our work thus far with Kappa, one of the things that sticks out in my mind is the high energy and commitment they bring it to it," says Carol Rasco, RIF's President and CEO. "People get excited, catch that energy and want to be part of it."

A 42-year-old organization like RIF is young compared to Kappa Kappa Gamma. We are always looking for ways to make our cause fresh and exciting."

At any given time, RIF has anywhere from a million to a million and a half children on its waiting list, according to Carol. And this waiting list is reflective of those children who meet the strict, demonstrated need guidelines at RIF. The last five years in particular, RIF is on record as concentrating their efforts from birth to age 8.

## We Can All Help

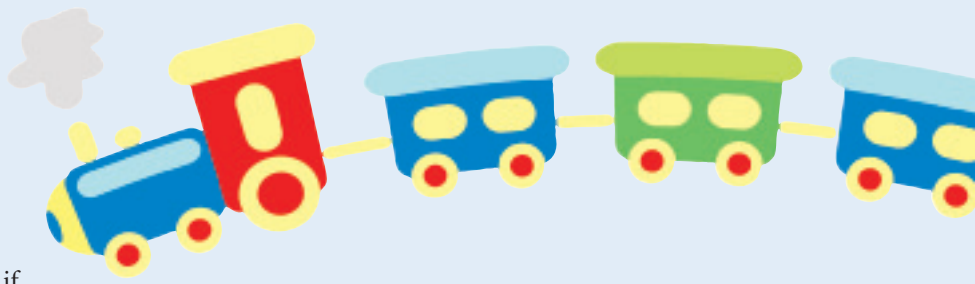
Research has shown, Carol says, which factors are most important for creating good readers as they grow. While parents reading to children top the list, Carol emphasizes any adults can work with children toward improving literacy. For Kappas specifically, this could be as simple as volunteering to read to a child.

"Teachers and librarians need all the support they can get," Carol says. "By partnering with Kappas who have volunteer time and resources, they get the high-energy, fantastic events."

In today's world, many facilities where children are present have strict rules about access to children. About 57 percent of RIF programs are in schools, but RIF is also present in Head-Start programs, after-school programs, and YMCA/YWCA. In many communities, new programs have sprung up from No Child Left Behind, affiliated with some houses of faith, hospitals, libraries, juvenile detention centers and child care centers. RIF can help facilitate on site so that volunteers are compliant with safety procedures.

"We don't want volunteers picking the book for the children," Carol says. "That's one of our big points. Children are more apt to read the book if they can pick it out themselves."





“One of the things we find is that children aren’t as interested in reading if they aren’t seeing themselves in a book,” Carol explains. “Books have to be, to some extent, a mirror of their own life, but they also want them to be a window to another world. If you’re going to get an African-American, Hispanic or Native American child excited about a book, they have to know that a book has something to do with their world.”

RIF is unable to accept book donations but partners with book vendors to receive significant discounts for purchases. “There’s much greater leverage by giving money to the RIF program,” Rachel Hutt explains. By using their discount, RIF can purchase significantly more books with money raised than could otherwise be purchased retail.

In addition to giving books, many local programs need to raise 25 percent of matched funds to qualify for federal funding.


“Often, those schools do not have parent groups helping them and they struggle to come up with that match,” Carol explains, “but if they were given a check to help come up with that 25 percent match, that’s a wonderful gift to the students at those schools.”

When money is raised for RIF, it can be distributed to a particular group with credit given to the donor. For example, the **NEW ORLEANS ALUMNAE ASSOCIATION** wanted to raise money for RIF but also wanted their efforts to be used locally to help rebuild after Hurricane Katrina. RIF used this special circumstance to create a partnership, and the money that the New Orleans Alumnae Association raises supports a RIF program run by Communities in Schools New Orleans.

**CAROLYN BYRD SIMPSON**, *Texas Tech*, serves as the Fraternity Philanthropy Chairman and has been named to serve as a Kappa’s representative on the RIF board. Carolyn’s background is elementary and secondary education, and she works as the director of the Success By 6 early childhood initiative at the Lubbock (Texas) Area United Way.

“Language development and early literacy development—which RIF promotes—are the key to children beginning school with the skills that they need to be successful,” Carolyn says. “RIF gives books to underprivileged children to promote their literacy development. This is a key element in a child’s development. Research indicates that children from less

advantaged homes begin school with a vocabulary of 5,000 words. Children from more advantaged backgrounds begin school with a vocabulary of more than 20,000 words. That is the achievement gap that begins at ages 3 and 4. Vocabulary is increased and strengthened when a child is read to and has books in the home.”

Now is the time to consider how your alumnae association or chapter, or you as an individual, will help make literacy a priority through a RIF opportunity in your area. 

---

*For more information, visit the RIF Web site at [www.rif.org](http://www.rif.org). Kappas can contact Rachel Hutt directly by e-mailing [kappa@rif.org](mailto:kappa@rif.org). Contact Carolyn Simpson at [carolynkkg@sbcglobal.net](mailto:carolynkkg@sbcglobal.net).*





Kappas in the classroom for RIF Fire Safety Day.



SAVANNAH CARTER, North Texas, stands besides a sign with an owl welcoming Denton elementary school children to their RIF event at the ZETA SIGMA chapter house.

Kappa alumna volunteers fix a hearty Sunday dinner for the roughly 70 adults and children staying at the Ronald McDonald House near Seattle Children's Hospital. After dinner, BETA Pi, Washington, members assemble Pat-the-Bunny textures with preschoolers, play Mad-Libs with older children and set up "reading stations" where the actives read stories to small groups of children.



Alicia McConnell, librarian of North Ward elementary school in Clearwater, Fla., receives a donation in support of RIF from members of the **CLEARWATER BAY ALUMNAE ASSOCIATION**. Kappa members include from left, **MARSHA KING MCQUINN**, Indiana, **MARJORIE EVANS MARTEN**, Cincinnati, RIF chairman **SHIRLEY LUSBY MAGNESS**, Maryland and **BETTY DEMELLO GASPARRE**, Maryland.







**LINDSAY GREGORY**, *Ohio Wesleyan*, distributes books to students at Oscola Elementary School in Ormond Beach, Fla. The **GREATER DAYTONA ALUMNAE ASSOCIATION** collects books and participates in RIF activities at the school two or three times a year.

Members of **DELTA ETA**, *Utah*, and the **SALT LAKE CITY ALUMNAE ASSOCIATION** gather at Washington Elementary School as part of their February Signature RIF Event. Both actives and alumnae conducted group readings, craft and cookie making and each child was given a book to keep.



**NANCY HANKEL**, *Hillsdale*, reads to children at the Hillsdale Community Library in conjunction with **KAPPA** chapter's RIF event.

**MARGARET (MAGGIE) COWLING**, *Colorado College*, reads to children from the Children's Development Center in Colorado Springs. **DANIELLE RONNOW**, *Colorado College*, is in the background.



**LINDA TRIPP MCNITT**, *Hillsdale*, guides children as they make a craft during a Head Start Carnival in which members of the **WILLIAMSBURG ALUMNAE ASSOCIATION** volunteered their support.

## The Four Seasons of the Foundation

*The lazy, hazy days of summer have arrived and both fall and another academic year are on the horizon. I'm fond of the four seasons and enjoy each for special reasons. Here is a look at the four seasons of the Kappa Kappa Gamma Foundation:*

### *Spring:*

- Our outstanding volunteer scholarship team read 427 applications and awarded 142 scholarships for the 2009-10 academic year.
- At the 15 Province Meetings, the Foundation encouraged 100 percent participation at our Tribute Tables. WOW! We did it—100 percent participation at every Province Meeting and \$34,400 raised for the Leadership Academy Endowment.
- Alumnae associations, chapters and individuals start making plans to participate in Holiday Sharing, which helps Kappa sisters in need.

### *Summer:*

- Checks are mailed to scholarship recipients.
- Our Annual Loyalty Fund kicks off in August. We hope we can count on your support again!
- The Catherine Schroeder Graf Heritage Museum Internship is in full swing.
- Join Friends of the Museums.

### *Fall:*

- The sixth-annual Leadership Academy takes place in September in Ohio. More than 200 collegiate and alumna participants are expected.
- We remind donors about contribution possibilities including tax-free IRA gifts before year-end.
- Online scholarship applications will be available November 1.

### *Winter:*

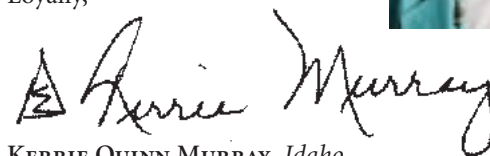
- Alumnae associations, chapters and individuals deliver gifts to their Holiday Sharing participants.
- Scholarship applications and Heritage Museum internship applications are due **February 1**.

Our scholarship program is a year-round process, and every member can help us fund scholarships. This year, we were able to award scholarships to 33 percent of the applicants who applied. Please help us give scholarships to all qualified applicants by donating today.

During the next several issues, we plan to feature gratifying scholarship stories. We asked members who received scholarships from 1990 to 2000 to share how that scholarship helped them. We heard from many.

Enjoy these scholarship stories and consider a gift to this incredible program. You'll be glad you did!

Loyally,



KERRIE QUINN MURRAY, Idaho  
Foundation President



*The KANSAS CITY ALUMNAE ASSOCIATION's 2008 Holiday House Tour enjoyed a record number of patrons who were hosted during two patron parties at the home of ADELE CORYELL HALL, Nebraska, a 1984 Alumnae Achievement Award recipient. A total of \$18,150 was donated to the Foundation. Participants included KAY BEASLEY MARTIN, Arkansas; ADELE CORYELL HALL, Nebraska; DARCY HOWE, Indiana, Leadership Academy Endowment Campaign Co-Chairman; and LIBBY TUCKER GESSLEY, Colorado College, Foundation Scholarship Chairman.*



# Scholarship Recipient Pays It Forward

By **KELLY COX BILEK**, TCU

**A**s a child raised on Kappa songs, I was thrilled to join Kappa at my mother's alma mater, Texas Christian University, in 1986. At this time, however, Texas was in the midst of a recession that resulted in widespread layoffs in the oil and gas industry. My father, an oil company executive, lost his job.

With two years of college to be completed and the cost of law school approaching, I had to rethink my plans on how to pay for the rest of my education. I started by accelerating my course load so that I was able to graduate a semester early. I then lived at home and worked full time to save money before starting law school. I folded and refolded thousands of "Gap pocket Ts" and missed my Kappa sisters terribly.

Having read about the post-graduate scholarships offered by Kappa, I knew that one could be an important part of my funding for my first year of law school at the University of Texas. I applied to the Kappa Kappa Gamma Foundation and received the Houston Alumnae Association named scholarship in the amount of \$1,000. I was thrilled to use that money to pay for my first year's textbooks. Even though I graduated

with a mountain of debt and loans, I appreciated that the cost of those textbooks had not been sitting on my credit card balance for several years!

After earning my law degree, I worked at a commercial litigation firm in Houston before joining a small firm of trial lawyers. I spent the next several years working on tort cases throughout South Texas. It was demanding and I was on the road for almost two years straight. But in 2001, I settled my first major case and turned the corner financially. I did three things that year—paid off my law school loans, bought a house and donated \$1,000 to the Kappa Foundation. This year I reached a donation milestone and began planning to include Kappa in my will.

Kappa was an integral part of my undergraduate learning experience, and it pains me to think of young members out there who may have to go "inactive" due to a financial crisis. I asked that my 2008 donation be targeted to helping undergraduates in situations like this. It is an honor to be a part of the Foundation's tradition of women supporting women. 🗝️

Kappa Kappa Gamma Foundation donor and former scholarship recipient **KELLY COX BILEK**, TCU, and her husband practice law together while raising their three children.







**JERITA  
DOUGLAS  
BROKAW,**  
*Iowa State*

## IRA Charitable Rollover Is a “Win-Win”

By **JERITA DOUGLAS BROKAW**, *Iowa State*

When I first heard about the benefits of the IRA Charitable Rollover, my interest in charitable giving was intensified. While at my 50th Kappa reunion, I was further motivated to increase my giving. Through *The Key*, I have been made aware of the ever increasing need for scholarships, Leadership Academy donations and financial assistance for members facing unfortunate circumstances. Many articles have profiled the wonderful benefits these financial programs provide. Therefore, I feel the Kappa Foundation is well-equipped to handle the distribution of such funds.

Giving back to Kappa is important because of everything Kappa has done for me. As a sophomore transfer student, pledging Kappa allowed me to feel secure and welcome among women who shared my interests. I recall fond memories of retreats, late-night chats, fundraisers with other sororities and fraternities and volunteer events. I was encouraged to be a part of the college activities and leadership programs, which was a benefit to me later in education, business and family life.

After college, I was given an opportunity to be a part of a small group of Kappas who met four times a year. Since then, through seasonal living, I have been a member of the **DESERT (CALIF.) ALUMNAE ASSOCIATION**. Within this large group, which meets monthly, there are small interest groups that provide me with immediate new friendships and mutual support.

Donating to the Kappa Foundation through the IRA Charitable Rollover gives me a great deal of satisfaction to be able to do a small part, along with many other Kappa sisters, to better the lives and education of women today. 🗝️

## IRA Charitable Rollover

The Emergency Economic Stabilization Act of 2008 extended an important tax planning provision for 2009. The provision permits IRA owners age 70 and older to make distributions to qualified organizations, such as the Kappa Kappa Gamma Foundation, of up to \$100,000 per year.

Your gift may be unrestricted or directed to a specific Foundation program. The gift can come only from a Traditional or Roth Individual Retirement Account. It must be an outright gift (no gift annuities or charitable trusts, for example). The funds must be sent directly from the IRA custodian to the Kappa Kappa Gamma Foundation. If the funds pass through your hands first, the amount will be added to your taxable income. The Kappa Kappa Gamma Foundation will provide a sample letter with instructions to the IRA custodian.

State and local tax laws may differ regarding the inclusion of an IRA distribution in taxable income, so consult your legal and financial advisers. To find out more, please call **MAGGIE SIMS COONS**, *Hillsdale*, Director of Planned Giving, toll free at 866-554-1870, ext. 2117 or e-mail [mcoons@kkg.org](mailto:mcoons@kkg.org).

## Thank you, Phoenix!

The **PHOENIX ALUMNAE ASSOCIATION** has donated \$500 to the Leadership Academy Endowment and \$500 to Rose McGill Aid. “As members of Kappa Kappa Gamma, we have been so richly blessed,” says **BETH McRAE**, *Arizona State*, President of the Phoenix Alumnae Association. “It is vital that we give back through the Leadership Academy and Rose McGill to continue to spread the blessings to others.”

# Houston Pilgrimage Helps Kappas

**T**he HOUSTON ALUMNAE ASSOCIATION's Holiday Pilgrimage is a winter fundraiser that includes a tour of Houston homes decorated for the holidays. The 2008 Pilgrimage luncheon was a sold-out success with nearly 500 in attendance. The highlight was keynote speaker Jason Graham, executive chef of Cal-a-Vie, Spa Havens in Vista Calif. Introducing Mr. Graham was **LOUISE BAYLESS PARSLEY, Texas**, humor columnist and author.

Funds raised during Pilgrimage benefit 13 charitable organizations, including the Kappa Kappa Gamma Foundation. The Charitable Foundation of Houston disbursed \$305,000 from the 2008 proceeds. A total of \$30,000 went to the Kappa Foundation.

"It is comforting to know that our sisterhood binds us together and that we can call upon the Foundation when the need arises whether it is to help with financial aid for college costs, medical expenses or family-related emergencies," says **LAURIE O'DONNELL TYLER, Texas**, 2008 Pilgrimage Co-Chairman.



L-R. **LAUREL PALMER, Ohio State**, Foundation Director of Annual Giving; **THERESE McNELLIS MOORE, George Washington**; 2008 Pilgrimage Co-Chairmen **LAURIE O'DONNELL TYLER, Texas**, and **SHANNON O'DONNELL KROGER, Texas**; and **JILL EVERSOLE NOLAN, Ohio State**, Foundation Financial Assistance Chairman. In April, Laurel and Jill traveled to Houston to receive \$30,000 for need-based aid to Kappa undergraduates.



**BATON ROUGE ALUMNAE ASSOCIATION** members present a check for \$9,000 to the Kappa Kappa Gamma Foundation on behalf of **DELTA IOTA CHAPTER, LSU**, which held a Kappa Klassic Golf Tournament, raising more than \$55,000. The balance of the funds was donated to Dream Day Foundation, which supports St. Jude's Children's Research Hospital. Baton Rouge Alumnae Association Members pictured from L to R are:

**MELISSE CAMPBELL, Mississippi**, Philanthropy Chairman; **KIM WISE SINGLETARY, LSU**, Treasurer; **APRIL PALOMBO, LSU**, Vice President; **PEGGY CROSS STEVENS WOOLEY, LSU**, President; **SUZANNE PERRON, LSU**, guest speaker; **SUE RAYBURN BRENNIG, LSU**, Foundation Development Committee; and **MAGGIE SIMS COONS, Hillsdale**, Director of Planned Giving.



**EPSILON UPSILON, Baylor**, hosted its ninth annual Kappa Klassic golf tournament with 50 sponsors and 116 players at Cottonwood Creek Golf Course. The event raised \$9,000 for Compassion Ministries, Reading Is Fundamental and the Kappa Kappa Gamma Foundation. **TEDI CLANCY**, Events Chairman, says, "Giving back and being involved in supporting others is a strong part of our Baylor chapter and we could not be happier with the outcome of our Kappa Klassic." The chapter gave \$3,500 to the Foundation, bringing its total giving to \$11,480, which moves them into the Adelphe Society giving level for which they will be recognized at the 2010 General Convention.



A group of Kappa friends, mothers and daughters who are **GAMMA ETA** alumnae from *Washington State* attend the 2009 Sundance Film Festival in Park City, Utah. From left are **DANA BARRY**, **KAREN THRAILKILL EMERSON**, **LOREE WAGNER SCHOONOVER**, **KATHLEEN CORR** (in front), **ALLY SCHOONOVER** and **KATHY THRAILKILL**.



Several members of **EPSILON NU**, *Vanderbilt*, from 2000-2005, enjoy a surprise reunion in Chicago, when, some who are locals and others on a visit, gather for New Year's celebrations and to cheer the Commodores on to victory in the Music City Bowl.



Kappa alumnae met each other for the first time after moving into the Splendido at Rancho Vistoso retirement community in Tuscon and enjoy new friendships along with the beautiful mountain views. Seated are **PHYLLIS EATON CAREY**, *Wisconsin*, and **DONNA DORLAND CATE**, *Illinois Wesleyan*. In back are **MELBA LARSON MATSON**, *Monmouth*, **BETTY FLATT CORWIN**, *North Dakota State*, and **BARBARA WALTER MILLER**, *Purdue*.



Despite temperatures at minus 17 degrees with wind chill of 40 below, this hearty group braved the cold to attend a revitalization meeting of the **ILLINOIS FOX VALLEY ALUMNAE ASSOCIATION** in January, basking in the warmth of their Kappa friendships.



Getting into the holiday spirit at the **LAWRENCE (KAN.) ALUMNAE ASSOCIATION's** annual cookie exchange, members get ready to make their selections. Pictured are **MARTY WADDELL SMITH, Kansas**, **CHARLOTTE TRITCH, Indiana**, **GINNY GORMAN OVENSTONE, ANGELIQUE JACKSON KOBLER** and **TAMMY GAYNIER STEEPLES, all Kansas State**, and **KAYE EDWARDS MOESER, Texas Tech.**



Friends enjoy a grand opening party at The Container Store in Cincinnati to benefit the Cincinnati Zoo. In back are **ERIN BALINT HOGUE, North Texas**, and **JILL CASTANIEN, Bowling Green**. In front are **LISA CUROTTO, Colorado**, and **COURTNEY FOX SHAVER, SMU**.



The Birmingham Area Panhellenic Association Benefit Luncheon annually raises funds to provide scholarships for talented area high school girls to attend summer fine arts and athletic programs, at the same time providing the opportunity to introduce them to the Greek system. This year the guest speaker was **KRISTA JENKINS, Michigan State**. She is pictured with her two Kappa sisters and proud mom. From left, **NONA JENKINS CLEARY, Michigan State**, **KRISTA, KELLY JENKINS GILLING, Michigan State** and Carolyn Leeman Jenkins, Kappa Alpha Theta.



**SUSAN STRAKER HOLDREN, Denison**, (left) professor of English at Zane State College, Zanesville, Ohio, and **DOTTY WELCH, PH.D., Akron**, vice president for student services at Zane, are two Kappas working together to provide strong educations for students in Appalachian Ohio.



**Oregon State** sisters from the classes of 1956 and 1957 enjoy a holiday tea at Portland's Heathman Hotel Restaurant.



Ten Kappas from **GAMMA ETA, Washington State**, have fun during a reunion of their 1951 pledge class at Priest Lake, Idaho.



**CAROLYN SMITH ROEHM, Washington Univ. (St. Louis)**, a fashion, floral and home designer and a 1988 Alumnae Achievement Award recipient, signs a copy of her latest book, "*A Passion for Blue & White*" for **KATIE FINNEGAN DARNELL, USC (Calif.)**, and her daughter, **HILLARY DARNELL, USC**, inscribing it to the "Kappas at USC." The Darnells had attended a luncheon to hear Carolyn speak. Katie has bought all of Carolyn's books and donated them to the **DELTA TAU** chapter house at USC.

*William and Mary* pledge sisters celebrate their 55th Homecoming. From left are **MARY ZIMMERMAN INSKEEP, ANN PIXEY BOYD** and **MARTI HOLLAND FENDER**.



**MARY CARR WATKINS, Ohio State**, a retired church organist and 60-plus-year Kappa, accompanies carolers on the piano during the **COLLIER COUNTY ALUMNAE ASSOCIATION's** annual holiday party.

During a holiday party, members of the **ARCADIA ALUMNAE ASSOCIATION** enjoy wrapping gifts for their Rose McGill Holiday Sharing recipient.





**PENSACOLA** alumnae gather at the home of association Treasurer, **ELEANOR GODWIN GUNTER, Florida State**, for a Christmas luncheon. This group raised funds for "Learn to Read Northwest Florida," in support of Reading Is Fundamental. "Learn to Read" is a nonprofit volunteer organization dedicated to helping functionally illiterate adults improve their lives.



Sisters from **CHI, Minnesota**, get together in St. Paul to celebrate St. Patrick's Day.



**TEXAS TECH** pledge sisters, **TARYN ANDERSON**, left, and **KATE GRAHAM**, traveled from Texas to Oregon to bike down the Pacific coastline. Here, in Kappa shirts, they take a break to admire the scenery.



**PEORIA (ILL.) ALUMNAE ASSOCIATION** members celebrate Founders Day at Kappa's birthplace ... the Stewart House in Monmouth, Ill.

# Where Can You Receive a Warm ...in an Alumnae Association!

**T**he arc of qualities that best describe Kappa are *leadership*, *scholarship* and *friendship*. But it is friendship that gives such meaning to being a member of an alumnae association. It is here that you are warmly welcomed and connections are quickly made, where lifelong friendships are formed. It is here where your talents and skills are appreciated and like ideals are shared. It is something intangible—but felt deep within.

Perhaps you are a member of one of Kappa's 300 alumnae associations in Canada, England and the United States, and enjoy the friendship and rewards found in membership. Associations come in all sizes, and there are activities and volunteer opportunities for each member.

Director of Alumnae **SUSANNE WOLFF VANDER HEYDEN**, *Washington State*, says, "The essence of an alumnae association is the creation of bonds of friendships and support that last a lifetime. This friendship and mutual support sustain an association regardless of size. The responsibility of an association is to care for every member and in so doing, they care for the greater good of the Fraternity."

The Fraternity values each association and the members who are the stewards of Kappa for generations to come. Alumnae serve as role models and advisers to our chapters, and members of House Boards ensure happy, safe homes for our collegians. Alumnae also support Reading Is Fundamental (RIF), our philanthropic partner. Literacy has become a focus and a philanthropy that even the smallest association can contribute to—the gift of time. Fundraising activities help to ensure the success of our Kappa Foundation and local philanthropies as well.

**If you are not a member of an association, you are missing the best part of your lifetime membership!**

*Here are a few of the many associations that provide the ongoing gift of friendship and opportunities for self-growth.*

- ◆ **CHARLESTON, S.C.**, doubled its membership. The year's events were co-hosted and in many cases a younger and an older alumna were paired, enabling members to get to know each other better. A Holiday Open House and a Fleur-de-lis Tea are always high on the enjoyment list, and association members feel that attending at least one event per year means success.
- ◆ Our nation's capitol district is a place where you can get lost in the crowd. The **WASHINGTON, D.C./SUBURBAN MARYLAND** association recognizes the transient population and creatively reaches out to new members. A mailing was sent to all collegiate chapter Presidents asking them to share association contact information with collegians who would be interning in D.C. An online community was created through Yahoo Groups for interns to post messages, trade rental property information, etc., before moving to the city. Interns are invited to association events and last summer enjoyed a baseball game at the Washington Nationals stadium. Known as the "Kapital Kappas," the group welcomes contact via [www.kapitalkappas.com](http://www.kapitalkappas.com).



**WASHINGTON D.C./SUBURBAN MARYLAND ALUMNAE ASSOCIATION** members ice skate at the Sculpture Garden at the Smithsonian.



# Welcome and Lifelong Friendship?



Members of the philanthropy committee from **INDIAN RIVER (FLA.) ALUMNAE ASSOCIATION** meet to plan literacy events. Pictured are: **NANCY McCONKIE HINES**, *Iowa State*, **SUSAN SCOTT TAYLOR**, *Northwestern*, **LIBBY SMITH MILLER**, *Kentucky*, **JANET CRAWFORD BAINES**, *Miami (Ohio)*, **SANDY JOURNEY ROLF**, *Missouri*. Not pictured is **ELLEN JOHNSON LAWTHOR KOWALYK**, *Maryland*.

◆ An emphasis on philanthropy keeps the members of **INDIAN RIVER, FLA.**, busy. Several members are community leaders in philanthropic organizations and the group has donated funds to the Redlands Christian Migrants Association to purchase books for the children of migrant workers, helping to build their English language skills and their progress in school.

◆ There is no generation gap in **New Orleans**. Reorganized after Hurricane Katrina, they focus on intergenerational programming. A party organized by six women of several generations was so successful that members asked when the next event would occur. To top it off, \$5,000 was raised for RIF.

◆ **CHARLESTON, W.V.**, is committed to raising funds for books for the local Head Start Program and special needs children. Disappointed to find that a matching grant was no longer available, the members continued their fundraising efforts and were able to provide 930 books to be divided among 31 school sites for classroom lending libraries.

Members continue to bring new books to alumna functions and are thrilled to promote literacy in their community.

◆ Membership tripled in **Lubbock, Texas!** With only 38 members, they were unable to send a representative to Convention last June. A letter explaining the situation brought a gratifying response. One member sent a donation to help pay dues for older members and recent

graduates. Others who had not paid in recent years returned. With more than 100 members now, the group is reenergized and getting more members involved in the Advisory Board for **DELTA PSI, Texas Tech**.

Varying in size from fewer than 20 members to 75 or more, these associations are among the many who constantly search for new and interesting ways to bring their members together while supporting a local chapter, gathering books for RIF or funds for other philanthropies, performing acts of service and ... perhaps most importantly ... enjoying friendship.

Friendship is the basis of membership in Kappa Kappa Gamma and it continues to be the tie that binds, no matter how far apart, how young or old, how varied in interests. One group says, "We think the genuine warmth and interest in each other is vital to our bond."

-----  
*This article spotlights just a few of our associations. Please let The Key know what your association means to you. E-mail [thekey@kkg.org](mailto:thekey@kkg.org).*



**CHARLESTON (W.V.) ALUMNAE ASSOCIATION** provides more than 900 books to 31 schools, supporting the local Head Start program.



**DEEDRA HAYES DETERMAN**, *Oklahoma State*, left, and **MELANIE BITNER HENRY**, *Tulsa*, co-founded 918moms.com, a community Web site for moms living in Tulsa's 918 area code.

## Kappas Create Web Site Geared to Tulsa Moms

**MELANIE BITNER HENRY**, *Tulsa*, and **DEEDRA HAYES DETERMAN**, *Oklahoma State*, co-founded a community Web site geared to moms living in Tulsa. Designed specifically for, about and by moms who live in the 918 area code, 918moms.com offers forums, blogs, a photo gallery, calendar of events, directory with a customized ratings system, current weather, a daily Hot Topics and the popular 918 Coupon Queen.

Before launching their business, which was a semi-finalist in the Mayor's Entrepreneurial Spirit Award, Deedra held the position of director of strategic marketing at FOX23 News and consulted for Clear Channel Communications. Melanie's background is in journalism with an emphasis on television news and new media, and was recently news director for a Tulsa television station. While working together at FOX23 News, they discovered that both are Kappas and became friends.

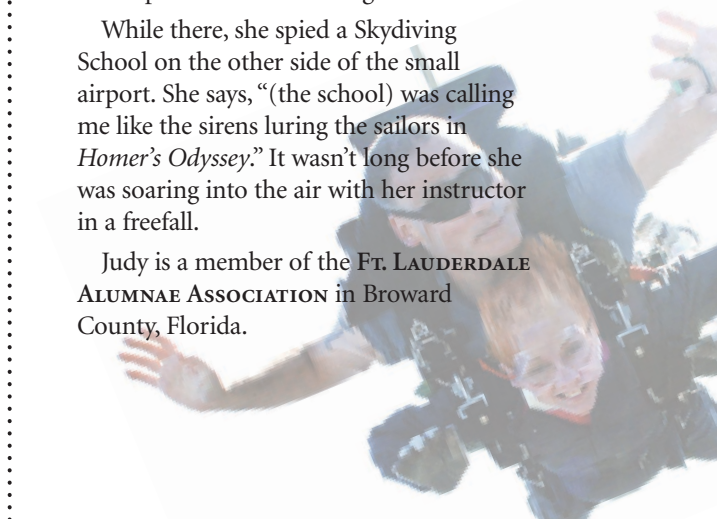
As working mothers, they also discovered that mothers living in the Tulsa area did not have access to one local Web site with everything needed to plan their day or muddle through the challenges of mommy-hood. Realizing there was a void in the market, they spent about a year preparing to launch 918Moms in September and word of mouth has generated a flood of women visiting the site. Deedra feels the site took on a life of its own, expanding to radio, print and television partners.

## Soaring to New Heights

Deciding she isn't too old to learn something new, **JUDY STANTON**, *Hillsdale*, recently learned to fly a helicopter and then went tandem skydiving. In February of 2008, Judy traveled to Houston where she received a scholarship from Whirly-Girls International. The scholarship was donated by Northeast Helicopters of Ellington, Conn. In October, she finished her training in Connecticut, hoping to eventually earn a Helicopter Instructor Rating.

While there, she spied a Skydiving School on the other side of the small airport. She says, "(the school) was calling me like the sirens luring the sailors in *Homer's Odyssey*." It wasn't long before she was soaring into the air with her instructor in a freefall.

Judy is a member of the **FT. LAUDERDALE ALUMNAE ASSOCIATION** in Broward County, Florida.



**JUDY STANTON**, *Hillsdale*, sits in a helicopter during a series of lessons to learn to fly, compliments of a scholarship with Whirly-Girls International.





**GORJANA RISTIC REIDEL**, *Arizona State*, has created a brand of jewelry found in more than 600 retail stores.

# The Making of the Gorjana Brand


## Jewelry Designer Follows her Passion to Success

Many Kappas are drawn to our beautiful symbols and imagery—the ornate and stately fleur-de-lis that is admired, and the golden key, always a sentimental favorite. It was only natural for **GORJANA RISTIC REIDEL**, *Arizona State*, to include her modern interpretation of these classic and timeless images in her sought-after jewelry designs. Found in more than 600 retailers and featured in shopping and style magazines like *Lucky*, *InStyle* and *Marie Claire*, Gorjana jewelry is a celebrity favorite, including **SOPHIA BUSH**, *USC (Calif.)*, who is often seen wearing her favorite Gorjana pieces.

Starting with yarn and buttons as a little girl in Yugoslavia, Gorjana's creativity was spurred at a young age and encouraged by her parents, a pastry chef and an engineer. As a high school student in Canada, it was modeling, fashion and catwalks that captured her creative spirit. But it was jewelry that ultimately became the balance of her influences; imaginative yet structured, eccentric yet simple.

After earning a marketing degree from Arizona State, where she served as chapter President of **EPSILON DELTA** in 1999, it was only a few years until Gorjana set out on her own with little more than a single bag of samples with a four-pound Yorkie in tow. Without a showroom or a sales

rep, Gorjana and her newlywed husband, Jason, forged their own way. Starting out small in Laguna Beach, Gorjana's marketing background helped her create a name by focusing on getting her products into the hands of celebrities, which led to magazine and media opportunities. A huge success, her jewelry is now found worldwide, including Japan, Korea, Taiwan and China.

While being the president and designer of a worldwide brand requires a challenging pace, Gorjana says she enjoys being her own boss because it allows her the flexibility to schedule time for her young son, Tristan. A young entrepreneur, Gorjana has achieved in just five years what it takes many companies decades to establish—brand recognition. Gorjana says that she is involved in almost every aspect of the company and is fastidiously attentive to detail and quality. With many talents, design is still Gorjana's favorite part of the business—her passion and driving force. She has especially enjoyed creating keys and fleur-de-lis, knowing that some will lovingly end up in the jewelry boxes of Kappas. See Gorjana's designs at [www.gorjana.com](http://www.gorjana.com). 

## Barnes & Noble Supports Kappa!



Shop **SEPTEMBER 19-21, 2009** with B&N's exclusive "Friends & Family Coupon" and support Kappa Kappa Gamma!\*

**SAVE-THE-DATE & SHOP!**  
**SEPTEMBER 19-21, 2009**  
**CODE: 568840**


Print Voucher at [www.denverkappa.org](http://www.denverkappa.org)!


*\*Proceeds benefit Craig Rehabilitation Hospital and Kappa scholarship programs.*

# Key Achievements

 **BROOKE CHRISTOFFERSON**, Simpson, has been selected as one of *PRESSTIME* Magazine's "20 Under 40" in the newspaper industry. Published by the Newspaper Association of America, the magazine recognizes those in the industry who have proven themselves as change agents within their companies. Director of market and business development for the Arizona Republic in Phoenix, Brooke helped launch a business to business marketing strategy and accompanying Web site which has generated nearly \$400,000 in revenue. She also created a baby boomer readership campaign and developed new training for all marketing staff. Brooke has an MBA from Arizona State.



 **GINGER MILLER AMBLER**, Ph.D., William and Mary, has been named vice president of student affairs for the College of William and Mary. She has two decades of experience in student services, and for the past year has served as interim vice president of student affairs, following the retirement of longtime vice president, Sam Sadler. Ginger served as assistant vice president for 10 years. She holds bachelor's and doctorate degrees from the college and has held student affairs positions at Franklin and Marshall College and at Ohio State, where she earned a master's degree and served as an adjunct professor in the School of Education. She will be responsible for overseeing the Division of Student Affairs, supervising a broad range of services including student rights and responsibilities, student counseling, student organizations, government and health and psychological services. In 2007, her doctoral dissertation won the Melvene D. Hardee Dissertation of the Year Award from the National Association of Student Personnel Administrators (NASPA).

 Frustrated with trying to determine the type of light plants require for home and garden, **KERRY MCCARTHY VERMEULEN**, Purdue, right, and friend, Cynthia VanRenterghem, are co-owners of Plumstone, LLC, makers of Sun Stick for outdoors and Sun Stick Home for houseplants. Tested and approved by Good Housekeeping Research Institute, these small plastic flowers placed strategically in the yard or home register the amount of available sunlight with patented technology that measures the light in the immediate area. For more, visit [www.gosunstick.com](http://www.gosunstick.com) or call 800-605-3769.







🔑 **DARCY HOWE**, Indiana, is ranked among the nation's top female financial advisers for 2009 in the June 8 issue of *Barron's* magazine. The ranking reflects the volume of assets overseen by advisers and the quality of their practice. Ranked 87th, Darcy is among three dozen women new to the list this year. Nominated by her firm, Merrill Lynch in Kansas City, she handles accounts typically worth \$20 million, with about \$950 million in assets under her management. Darcy serves Kappa as co-chairman of the Foundation's Leadership Academy Endowment Campaign.



🔑 **KAY SMITH LARSON**, Washington, is the recipient of the 2009 Distinguished Service Award by the University of Washington Alumni Association, the highest honor bestowed on its volunteers and members. Kay, a former Fraternity President, has volunteered for her alma mater throughout the 55 years since her graduation. From serving as the local Kappa chapter adviser and organizing the campus Pahlennic group, to rounding up classmates for the 25th and 50th reunions and coordinating events to fund

scholarships, Kay does it all from her California home. Quoted in an article in the UW Alumni magazine, she says, "Just like I knew I wanted to go to the UW, I always knew I would be a volunteer afterward."

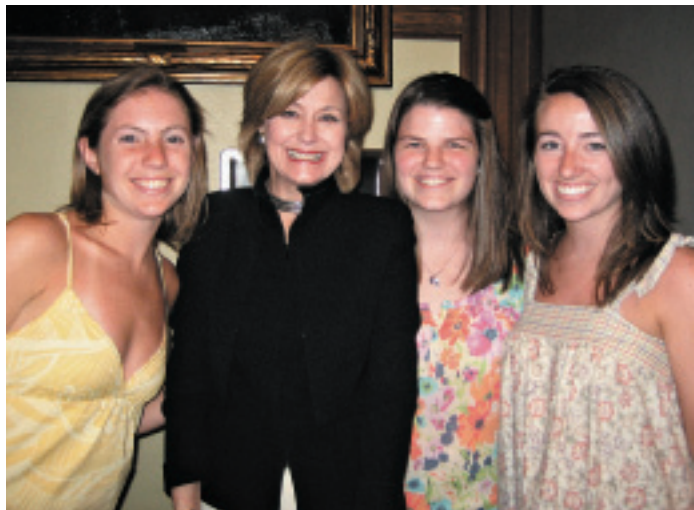


🔑 **JENNIFER HILTON SAMPSON**, Baylor, has been appointed to the Fraternity Finance Committee. Jennifer is executive vice president and chief operating officer for the United Way of Metropolitan Dallas (UWMD). A Certified Public Accountant, Jennifer worked for 10 years in the audit practice for Arthur Andersen LLP in Dallas before taking a position with United Way as senior vice president and chief financial officer. As a sustaining member of the Dallas Junior League, her passion

for giving back to the community has melded well with her community impact work at UWMD. Jennifer and her attorney husband, Edward Walter Sampson III, live in Dallas with their son, Hilton, who turned two in March 2009.



**SUSAN SIMONS BUFKIN**, Texas, is awarded the 2008-2009 Eanes Independent School District Teacher of the Year in Austin, Texas. Dr. Nola Wellman, Eanes ISD Superintendent, presents Susan with her award. Susan was also chosen as the Bridge Point Elementary Teacher of the Year. She has spent seven years at Eanes ISD, the past three teaching first grade at Bridge Point. She also serves as the **BETA XI** Advisory Board Chairman at the University of Texas.



🔑 **DEPAUW** Kappas enjoy meeting **IOTA** chapter member, **JANE PAULEY**, Indiana, after she spoke at the Society of Professional Journalists during its 100th anniversary celebration on the DePauw campus. As the keynote speaker, Jane began her speech welcoming her Kappa sisters in the audience. From left are **BECCA MADDELL**, **JANE**, **SALLY REASONER** and **KELSEY MILLER**.

To submit stories to Key Achievements, contact **KRISTIN JOHNSON STYERS**, Editor, at [thekey@kkg.org](mailto:thekey@kkg.org). Please include a high-resolution photo or head shot and detailed information. Unfortunately there is not enough space for all submissions.

# in memoriam

*These names were submitted to Fraternity Headquarters between February 10, 2009, and May 27, 2009.*

**\* ADELPHI COLLEGE**  
Flickinger, Marianne Cabell, '38, d. 02/09

**ALABAMA, UNIVERSITY OF**  
Jackson, Anne Waldrop, '75, d. 01/95  
Stauffer, Melanie Province, '72, d. 09/05  
Younger, Emily Wiggins, '39, d. 04/09

**ALLEGHENY COLLEGE**  
Henry, Betty Hamman, '49, d. 12/05  
Kelley, Eileen Heller, '60, d. 04/09  
Paquette, Katherine Bird, '60, d. 07/05  
Tulipan, Eva Bristow, '42, d. 02/08

**ARIZONA, UNIVERSITY OF**  
Anthony, Martha Goit, '44, d. 03/09  
Bolin, Barbara Maxwell, '78, d. 01/09  
Jamieson, Suzanne Schock, '39, d. 04/09

**ARKANSAS, UNIVERSITY OF**  
Deller, Carolyn Jones, '43, d. 03/09  
Moody, Rosemary Privett, '61, d. 09/08  
Patrick, Barbara Rose, '47, d. 02/09  
Purifoy, Susan Robins, '66, d. 02/09  
Scott, Earnestine Vinson, '41, d. 12/08

**BARSON COLLEGE**  
Woodcock, Karin, '84, d. 02/09

**BAYLOR UNIVERSITY**  
Tunnell, Gloria Blackburn, '82, d. 01/05

**\* BOSTON UNIVERSITY**  
May, Gretel Preble, '40, d. 01/09

**BUCKNELL UNIVERSITY**  
Danzig, Cynthia Dielman, '56, d. 04/09  
Haigh, Jane Sheble, '48, d. 10/05  
Williams, Margaret Hill, '60, d. 07/07

**BUTLER UNIVERSITY**  
Adams, Annabelle Dickerson, '48, d. 03/05  
Broberg, Sheila Lindsay, '56, d. 04/05  
Gleaves, Charlene Everett, '58, d. 01/08  
Hodges, Nancy Newton, '51, d. 12/08  
Rogers, Margaret Blackwell, '58, d. 03/09

**CALIFORNIA STATE U., FRESNO**  
Granger, Dorothy Long, '57, d. 12/08

**CALIFORNIA, U. OF, BERKELEY**  
Brousse, Rita Wright, '56, d. 01/09

**CALIFORNIA, U. OF, LOS ANGELES**  
Chenoweth, Charlanne Swanson, '49, d. 11/08  
Hadley, Frances Alexander, '29, d. 03/09  
Hazeltime, Frances Coffin, '29, d. 12/01  
Smith, Betty Dickinson, '36, d. 04/09

**CARNEGIE MELLON UNIVERSITY**  
Masley, Emma Gasowski, '63, d. 05/06  
Wilson, Mary, '50, d. 06/08

**CINCINNATI, UNIVERSITY OF**  
Beyersdorfer, Margaret Duffy, '50, d. 03/09  
Crandall, Anna Snook, '32, d. 04/09

**COLORADO COLLEGE**  
Beran, Alexe Stockton, '61, d. 04/09  
Desena, Beverly Davis, '65, d. 02/08  
Pike, Nancy Cunningham, '55, d. 06/08

**COLORADO, UNIVERSITY OF**  
Adams, Bonnie McGrew, '62, d. 12/08  
Cogswell, Hester-Jane Butcher, '32, d. 12/09  
Gibbs, Doris Bennett, '44, d. 03/09  
Hazard, Kathleen Casey, '34, d. 02/09  
Holmquist, Cynthia Hayden, '52, d. 12/08  
White, Marion Stearns, '39, d. 01/09

**CORNELL UNIVERSITY**  
Ely, Helen Wilson, '48, d. 06/07  
McNeill, Barbara, '59, d. 01/09  
Peterson, Elsie McMillan, '54, d. 11/99  
Wierum, Jean Hough, '44, d. 09/08

**DENISON UNIVERSITY**  
Hartenstein, Sally Swan, '71, d. 04/09  
Jeffrey, Kay Moessner, '47, d. 05/09

**DEPAUW UNIVERSITY**  
Ashworth, Patricia Dodd, '43, d. 02/09  
Barr, Beth Williston, '35, d. 02/09  
Boeh, Janet Marshall, '50, d. 03/09  
Eyrich, Jean Young, '44, d. 04/09  
Weise, Jessie O'Connell, '52, d. 04/09

**DRAKE UNIVERSITY**  
Metier, Ellen Clemens, '41, d. 02/09  
Schmitt, Dorothy Drake, '34, d. 10/02

**DUKE UNIVERSITY**  
Crosthwait, Carroll Costigan, '36, d. 02/09  
Goddard, Birdie Moore, '43, d. 01/09  
Leary, Dorothy, '30, d. 01/09  
Moore, Annie Rebman, '33, d. 04/09

**EMORY UNIVERSITY**  
Madden, Jennifer Holt, '61, d. 03/09  
**GEORGE WASHINGTON UNIVERSITY**  
Flake, Mary Millikan, '39, d. 12/08  
Heiberg, Mimi Branson, '45, d. 03/09  
Tuller, Bev Alexander, '54, d. 04/09

**GEORGIA, UNIVERSITY OF**  
Calhoun, Kathryn Hayes, '89, d. 01/09  
Hood, Nancy Trout, '58, d. 02/08  
Sullivan, Marguerite Thomas, '54, d. 02/09  
**HILLSDALE COLLEGE**  
Chuba, Nancy Kehoe, '51, d. 05/09  
Culver, Ruth Chivers, '24, d. 03/09  
Groth, Josephine Crowley, '39, d. 02/09  
Steiner, Jane Smith, '34, d. 05/08

**IDAHO, UNIVERSITY OF**  
Spaeth, Ruth Specht, '43, d. 02/09  
Sweeney, Marilyn Evans, '51, d. 01/09

**ILLINOIS WESLEYAN UNIVERSITY**  
Beaumont, Jane Trotter, '39, d. 10/04  
Cherry, Alice Kuhn, '30, d. 02/09  
Dornaus, Emma Hoblit, '36, d. 02/09  
Fleming, Myra King, '47, d. 03/09  
Mader, Carolyn Corten, '51, d. 02/05

**ILLINOIS, UNIVERSITY OF**  
Hand, Ann Maurer, '63, d. 12/03  
Henning, Charlotte Conrad, '38, d. 12/08  
Hudnell, Virginia Keusink, '32, d. 04/09  
Overshiner, Shirley McVicar, '53, d. 04/09

**INDIANA UNIVERSITY**  
Fisher, Barbara Simmermon, '37, d. 03/09  
Gardner, Janet Bartley, '48, d. 12/08  
Payne, Juliana Walton, '36, d. 01/09  
Rugg, Jean Kernodle, '38, d. 01/09  
Rundell, Jean Duthie, '29, d. 04/09

**IOWA STATE UNIVERSITY**  
Kroeger, Dorothy Myers, '50, d. 03/09  
Ramsey, Dorothy Shields, '47, d. 01/09  
Walsh, Kathie Yeutter, '59, d. 04/08

**IOWA, UNIVERSITY OF**  
Beck, Sara Clarity, '81, d. 04/09  
Buckley, Barbara Kent, '39, d. 03/09  
Burford, Pamela Durr, '58, d. 03/09  
Raymond, Isabel Kime, '22, d. 01/09  
Spaulding, Laura, '49, d. 01/09  
Woodhouse, Kellie Murphy, '79, d. 06/08

**KANSAS STATE UNIVERSITY**  
Bekwith, Gloria Bingesser, '35, d. 05/09  
Breed, Nadine, '49, d. 03/08  
Gallaher, Jane Kininmonth, '38, d. 05/88  
Hunter, Mary Sullivan, '36, d. 03/02  
Johnson, Lucille Albright, '31, d. 06/08  
Lowder, Sylvia Hyde, '53, d. 04/09

**KANSAS, UNIVERSITY OF**  
Ashby, Elizabeth Shears, '47, d. 05/08  
Bell, Eileen Horner, '47, d. 02/09  
Blaker, Maurine Downing, '28, d. 05/09  
Kester, Dorothy Fleckenstein, '30, d. 11/08  
King, Carolyn Armsby, '50, d. 12/07  
Lichty, Marjorie Free, '44, d. 04/09  
McFarland, Evelyn Little, '34, d. 03/09  
Smith, Mary Robinson, '39, d. 02/09

**KENTUCKY, UNIVERSITY OF**  
Balch, Betty Smith, '38, d. 02/03  
Hanes, Pamela Metcalf, '66, d. 05/09  
Holladay, Harriett McDonald, '27, d. 04/09  
Manby, Patricia Lenz, '60, d. 07/05  
McDermott, Mary Moorhead, '42, d. 11/04  
Walton, Mary Scott, '41, d. 04/09

**LAWRENCE UNIVERSITY**  
Rees, Alexis, '96, d. 04/06

**LOUISIANA STATE UNIVERSITY**  
Cooper, Carl Lamantia, '60, d. 01/09  
Olinphint, Nancy Kelley, '46, d. 02/09  
Quinn, Nanette Lanigan, '76, d. 02/09

**\* MANITOBA, UNIVERSITY OF**  
McPhail, Marjorie Graham, '46, d. 01/09

**\* MARYLAND, UNIVERSITY OF**  
Bowersox, Barbara Smith, '47, d. 02/09  
Kelley, Elizabeth Cissel, '44, d. 02/09  
Tapparo, Amy Johnston, '82, d. 04/07

**MASSACHUSETTS, UNIVERSITY OF**  
Pennebaker, Margaret Carlson, '51, d. 04/06

**MIAMI UNIVERSITY**  
Bodle, Margaret McKnight, '43, d. 11/99

**MIAMI, UNIVERSITY OF**  
Boy, Nancy Adams, '40, d. 06/08  
Moye, Louise Herbert, '38, d. 01/09  
Turner, Doris Page, '38, d. 05/09

**MICHIGAN STATE UNIVERSITY**  
Ammon, Joanne O'Connor, '48, d. 06/07  
Keating, Doris Ward, '40, d. 04/00  
Kieppe, Shirley Simmons, '44, d. 03/09

**MICHIGAN, UNIVERSITY OF**  
Brown, Donna, '46, d. 05/09  
McCrary, Holly Grahman, '81, d. 11/07  
Reece, Marion Keyser, '27, d. 02/09

**\* MIDDLEBURY COLLEGE**  
Higgins, Gloria Moore, '43, d. 04/09

**MINNESOTA, UNIVERSITY OF**  
Famiglietti, Isabelle Baer, '33, d. 03/09  
Merling, Margaret Watts, '34, d. 01/09  
Michelson, Ann Pasternacki, '38, d. 03/09  
Poirier, Elizabeth Flannery, '60, d. 08/99  
Rohan, Merrilyn Jerome, '40, d. 04/09

**MISSISSIPPI, UNIVERSITY OF**  
Cabaniss, Susan Russell, '72, d. 03/09  
Holmes, Vicki Smith, '62, d. 11/08  
Tomlinson, Betty Walker, '57, d. 05/09

**MISSOURI, UNIVERSITY OF**  
Bartels, Jean Miller, '40, d. 08/08  
Hawkins, Patricia Becker, '57, d. 12/08  
Sinclair, Marilyn Jenkins, '42, d. 04/09

**MONMOUTH COLLEGE**  
Barnes, Estelle Evers, '41, d. 03/09  
Bratta, Kimberly Houran, '71, d. 05/07

**MONTANA, UNIVERSITY OF**  
Cooper, Neala Pippy, '63, d. 12/02  
Kelly, Billie Berget, '48, d. 03/09  
Merrick, Judith O'Brien, '39, d. 04/09  
Metcalf, Donna Hoover, '32, d. 01/09  
Moore, Margaret Sterling, '65, d. 11/06  
Prather, Shirley Strandberg, '39, d. 03/09  
Scharer, Marjorie Landsrud, '44, d. 04/09  
Snow, Alice Taylor, '30, d. 04/09

**NEBRASKA, UNIVERSITY OF**  
Frech, Marcia Mahn, '55, d. 01/09  
Leonard, Jacqueline Reed, '54, d. 02/09  
Yeager, Paula Scheet, '74, d. 11/05

**NEW MEXICO, UNIVERSITY OF**  
Collister, Margaret Spiegel, '62, d. 04/09  
Fenner, June Mills, '55, d. 01/09  
Hagberg, Mary Stoes, '61, d. 06/07  
Livingston, Kitty Flint, '36, d. 03/09  
Thompson, Suzanna Coleman, '49, d. 02/09

**\* NORTH DAKOTA STATE UNIVERSITY**  
Cummings, Elizabeth Pannebaker, '39, d. 01/09

**NORTHWESTERN UNIVERSITY**  
Allen, Frances Orcutt, '38, d. 05/09  
Benjamin, Gail, '54, d. 12/08  
Frank, Ann Benedek, '73, d. 08/04  
Stafford, Katherine Leach, '38, d. 10/07  
Strauss, Betty Shafer, '30, d. 02/09  
Wagner, Sylvia Tullar, '51, d. 05/08

**OHIO STATE UNIVERSITY**  
Foulk, Susan Powelson, '50, d. 03/09

**KING WESLEYAN UNIVERSITY**  
Harvey, Eleanor Beetham, '52, d. 05/09  
Volk, Betty Monahan, '32, d. 03/09

**OKLAHOMA, UNIVERSITY OF**  
Harrison, Mary Farr, '40, d. 03/09  
Herbst, Jan Dooley, '55, d. 04/09  
Knox, Frances Lambeth, '42, d. 03/09  
Molloy, Mary Bates, '40, d. 02/05  
West, Mary Andrews, '39, d. 02/09

**OREGON STATE UNIVERSITY**  
Creighton, Deborah, '71, d. 04/06  
Davidson, Florence Sims, '44, d. 03/09  
Lynch, Constance Morton, '45, d. 12/08  
McEachen, Judith Beauchamp, '63, d. 03/09  
Nelson, Karleen Emmrich, '45, d. 02/09  
Peterson, Beverlee Price, '43, d. 03/09  
Sears, Katherine Seberg, '39, d. 04/09

**OREGON, UNIVERSITY OF**  
Lafferty, Elizabeth Brown, '45, d. 01/09  
Petts, Nancy Ruweleer, '67, d. 05/07  
Riddell, Melinda, '80, d. 04/07

**PENNSYLVANIA STATE UNIVERSITY**  
King, Mina Smith, '38, d. 03/09  
Snyder, Janet Lyons, '47, d. 05/09  
Sweigart, Pauline, '38, d. 04/09  
Van Zandt, Dorothy Perkins, '32, d. 11/08

**\* PENNSYLVANIA, UNIVERSITY OF**  
Forté, Emilie Thornton, '48, d. 12/06  
Krewson, Elizabeth Russell, '43, d. 05/09

**PITTSBURGH, UNIVERSITY OF**  
Dickinson, Marilyn Wyncoop, '41, d. 04/09  
Heald, Jessie Newstetter, '44, d. 02/08

**\* PUGET SOUND, UNIVERSITY OF**  
Geil, Janet Hancock, '67, d. 09/82

**PURDUE UNIVERSITY**  
Magnussen, Martha Avery, '36, d. 11/08  
Powers, Doris Hurt, '45, d. 02/09

**ROLLINS COLLEGE**  
Allison, Lageorgia Newell, '32, d. 04/93

**\* SAN JOSE STATE UNIVERSITY**  
Lotz, Nathalie, '51, d. 03/09  
Newton, Christina, '65, d. 01/09

**SOUTHERN CALIFORNIA, U. OF**  
Davenport, Betty, '53, d. 03/02  
Myers, Deanne Smith, '63, d. 08/08

**SOUTHERN METHODIST UNIVERSITY**  
Barnes, Sally Temple, '46, d. 02/05  
Branch, Margaret Ballew, '43, d. 04/09  
Daniels, Mary Perner, '44, d. 09/08  
Mayes, Rose Riddle, '37, d. 12/08  
Rembert, Jane Obeirne, '44, d. 03/09  
Rodgers, Jean Settle, '42, d. 02/09

**STANFORD UNIVERSITY**  
Foxworth, Sara Beckham, '78, d. 01/09  
Newman, Frances Burks, '32, d. 06/08

**TENNESSEE, UNIVERSITY OF**  
Weismueller, Caroline, '68, d. 05/09

**TEXAS CHRISTIAN UNIVERSITY**  
Richards, Sasha, '98, d. 01/08

**TEXAS TECH UNIVERSITY**  
Campbell, Deborah, '67, d. 01/09  
Graves, Kathryn Kirkpatrick, '54, d. 04/09  
Lewis, Gloria Holleman, '54, d. 02/09  
Orndorff, Betty Smith, '63, d. 02/09

**TEXAS, UNIVERSITY OF**  
Cowan, Marylouise Oak, '42, d. 03/09  
Drewery, Ruth Perdue, '36, d. 12/08  
Fields, Carolyn Dorset, '51, d. 05/09  
Stephenson, Stefanie Ard, '69, d. 12/08

**TORONTO, UNIVERSITY OF**  
Hamilton, Jill Houston, '73, d. 11/08

**TULANE UNIVERSITY**  
Heroman, Mary Prosser, '66, d. 02/09

**TULSA, UNIVERSITY OF**  
Ruark, Lou Ann, '51, d. 03/09

**UTAH, UNIVERSITY OF**  
Brown, Carol Anderson, '58, d. 02/06  
Ely, Joy Wilson, '43, d. 03/09  
Moffitt, Joy Olsen, '47, d. 01/09

**VIRGINIA TECH**  
Stiely, Jody, '88, d. 12/08

**WASHINGTON STATE UNIVERSITY**  
Schaefer, Janelle, '83, d. 02/08

**WASHINGTON UNIVERSITY**  
Bute, Jade Gardner, '53, d. 03/08  
Litzinger, Alma Dunford, '42, d. 07/05  
Mackey, Cornelia Materne, '27, d. 04/09

**WASHINGTON, UNIVERSITY OF**  
Klopfenstein, Mildred Ives, '37, d. 01/09

**WEST VIRGINIA UNIVERSITY**  
Boyd, Margaret Wotring, '54, d. 03/09  
Lorentz, Anne Hickman, '58, d. 02/08

**WHITMAN COLLEGE**  
Christopher, Helen Gray, '28, d. 09/08  
Esary, Jean Mac Donald, '44, d. 04/09  
Huckabay, Jean Olson, '47, d. 04/09  
White, Mary Mersereau, '40, d. 04/09  
White, Mary Marcus, '44, d. 04/09

**WILLIAM AND MARY, COLLEGE OF**  
Kent, Kathy, '73, d. 04/09  
Patterson, Helen Strange, '37, d. 01/03  
Tannebring, Nancy Norton, '43, d. 03/09

**WISCONSIN, UNIVERSITY OF**  
Sands, Mary Porter, '42, d. 02/09

**WYOMING, UNIVERSITY OF**  
Hamer, Lisa Blackwell, '79, d. 11/07  
Jennings, Gloria Lynch, '46, d. 12/08  
Webster, Lucille Moncur, '33, d. 03/09

\* Indicates inactive chapters.

In order for names to appear in "In Memoriam," verification and date of death must be sent to Fraternity Headquarters and Foundation Office, P.O. Box 38, Columbus, OH 43216-0038. Memorial gifts may be sent to the KKT Foundation.



# Save a Bundle With a Group—

# Kappa Travels

Climb a mountain, cruise a river or ocean,  
so many new choices in 2010! *All prices approximate, p.p. dbl., no air.*

Alumni Holidays International—Crystal Cruise with (AHI 800-323-7373)



*Colorful local Peru*



*Milford Sound, New Zealand*



*Pompei Ruins, Coast of Italy*

## Peru, First-class Adventure

**Feb 8-18**—Taking planes, boats and trains to Lima, Cuzco, Machu Picchu and Lake Titicaca, you will see ancient mysteries, layers of civilization and enjoy colorful arts and crafts. \$3,495.

## Cruise the South Pacific

**March 28-April 4**—Six Star Crystal Cruise from Auckland, New Zealand, see Milford Sound, pass through the Tasman Sea to Sydney. \$4,695.

## Amalfi—The Divine Coast of Italy

**April 28-May 6**—Cliffside hotel in Amalfi is your base for visits to Positano, Sorrento, Ravello, the historic sites of Pompeii and Herculaneum and the Isle of Capri. A divine trip for \$2,800.

## Aix-en-Provence, France

**May 11-19**—Explore mountain villages, forests, vineyards & olive groves. Arles and Pont du Gard Roman ruins. \$2,900.

## Canadian Maritimes—Small Group

**July 26-Aug 4**—Nova Scotia, New Brunswick and Prince Edward Island. \$3,500.

## Scotland, Oban and Stirling

**Aug 8-16**—Highlights include Edinburgh, St. Andrews, Loch Ness, kilts, pipes and tartans. \$3,900.

## Cruise the Danube

**Sept 7-18**—In the heart of Europe visit Prague, Melk, Passau, Vienna and Budapest. \$3,500.

## Italian Lakes and Dalmation Coast Cruise

**Sept 9-19**—Board the *Wind Star* motor-sail-yacht luxury cruise for 300 visiting Como, Venice and Dubrovnik. \$4,500.

Alumni Holidays International Travel (AHI) trips include alumni travelers from other organizations and offer alternative dates. Family and friends are welcome on all Kappa Travels trips.

For more information, contact ANNIE JOHNSON BUTLER, Arizona, Kappa Travels Coordinator at 520-795-7856, or [annjb2702@aol.com](mailto:annjb2702@aol.com) or AHI toll free: **800-323-7373**

<http://kappag.ahitravel.com>

# KAPPA TRAVELS



**FLORIDA STATE.** Each year during Parents Weekend, **EPSILON ZETA** members open their hearts and their doors for chapter members' families. So that no parents get lost on their way to the chapter house, members painted giant wooden KKT letters. **JEAN GOSE, HEATHER TROUTMAN, KRISTINA MITCHELL** and **ANNELISE ATKIN** wait by the letters to greet arriving parents.



**ARIZONA STATE.** **EPSILON DELTA's** Kappa Klassic Golf Tournament raises money for the Southwest Autism Research and Resource Center, which was co-founded by 2008 Alumnae Achievement Award recipient **DENISE DREISESZUN RESNIK, Arizona State.** Junior **CHRISTIE POST** says she was thrilled that many family members participated and had the opportunity to see how the chapter supports the community.



**WASHINGTON AND LEE.** "Rah! Rah! for Kappa Kappa Gamma..." **ZETA TAU** members **KATHARINE FARRAR, WILTON MEGARGEL** and **GRETCHEN FRITCHIE** share Kappa symbols, along with the spirit of friendship they represent, during Recruitment.





**SIMPSON.** PAIGE JONES and LAUREN SCHROEDER of OMICRON<sup>Δ</sup> spread mulch during a school-wide campus clean-up. Kappas went out in three teams to help beautify the campus.



**ALLEGHENY.** CASEY PAGANO, CHRISTINA SUTPHEN and LAURA OLIVER bundle up in their Kappa sweatshirts and vintage sweater, which has been passed down for many years. At **GAMMA RHO**, women always brave the Meadville winter during “Run Out” to celebrate a successful Recruitment.

**NORTH CAROLINA.** During the chapter’s 50th Anniversary weekend, recently graduated **EPSILON GAMMA** alumnae gather with active members for brunch at the Carolina Club. The weekend-long celebration also included a reception and a game-day cookout and tailgate.



**INDIANA.** Summer vacation usually means a long time away from sisters, but members of **DELTA CHAPTER** stayed connected with a new member class reunion in Indianapolis. **ALANA HYMAN** says, “Meeting during summer meant that without the stress of school we could develop closer friendships and form tighter bonds.”

**MONMOUTH.** Taking a silly picture at Bid Day, the **ALPHA<sup>Δ</sup>** members “are all just extremely happy to be sisters,” says **KAYCE DEROO**.





**WESTMINSTER.** ZETA ZETA members smile and celebrate after they win big at the conclusion of Homecoming Week. The prize money awarded to the chapter was given to a ZETA ZETA member to aid in her ongoing prescription costs and medical bills.



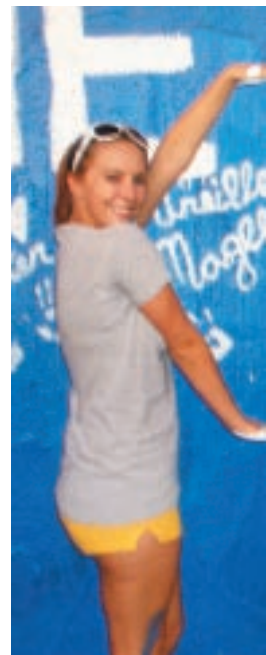
**SYRACUSE.** "Kappa Kandyland," BETA TAU's philanthropy day during Spring Recruitment, is a literacy incentive program that encourages elementary school students to continue learning and reading. With help from potential new members, BETA TAU created and donated hundreds of bags of candy for area children.

**UTAH.** Members show support for one of their own at a pageant, one state over. A group of DELTA ETA women made the trek to Idaho to support a recent graduate, MEGAN WEST, in the Miss Idaho Pageant. Megan was delighted to have her sisters there to watch her win "Miss Congeniality."



**CINCINNATI.** Hold the Ketchup. BETA RHO members grill up and dish out juicy hotdogs for a philanthropy night to raise money for the Make-A-Wish Foundation. Two lucky members even had the honor of wearing the hotdog costumes!

**FLORIDA.** MIREILLE MAGEE, SARAH MESSER and AMANDA ASCHENBRENNER pose as KKT letters during an annual event, "wall-painting," during which EPSILON PHI actives gather on 34th Street with new members to stake out a piece of the wall to show Kappa pride.







**OKLAHOMA.** Happy to arrive “home,” new members **LAURA LANDPHAIR, DEANNA ALONSO, JILL ANDERSON** and **BAILEY SNYDER** sport their blue “Went Kappa” shirts. Their smiles show how truly happy they are to have pledged **BETA THETA CHAPTER.**



**BOWLING GREEN.** Excited to welcome new members to **ZETA KAPPA CHAPTER**, **KAELA DIECKMAN, ANNA DZUROVCIN, JULIA GRUSS, RACHEL PAZDZIORKO** and **JOANNA PAZDZIORKO**, look like one happy family.



**OHIO STATE.** **BETA NU** Chapter Council members **CHELSEA PATTON, MEG KIRBY** and **STEPHANIE GREEN** hang on tightly to each other atop a platform during a leadership retreat. “We were forced to rely on each other while completing the difficult high-ropes course,” says Chelsea.



# Kites and Keys Live Together

## *A Story of Panhellenic Sisterhood at the University of Montana*

In a true act of Panhellenic sisterhood, the women of **BETA PHI, Montana**, opened their hearts and their home, literally, to their neighboring Kappa Alpha Theta sisters. In December 2008, the Kappa Alpha Theta house flooded leaving the property temporarily uninhabitable. When the Kappas heard the news that the Theta women would not have a place to live all together when they returned to school after the holiday break, the Beta Phi members decided to invite the Thetas to share their spacious Kappa house. The Kappa house went from having 23 residents to 43 on move-in day.

The logistics did not take long to figure out. Theta members contributed to house bills, and they graciously paid for two new showers to be installed. There was a chore board, an intricate laundry schedule, and an orientation meeting themed, “When life gives you lemons, make lemonade.” Orientation night consisted of skits and games, a gift exchange, and, of course, lemon bars for dessert. Thetas met on campus for their chapter meetings, and when the Kappas finished their meetings at the house, President Kayla Hoggatt text-messed the Theta president to inform her that the Thetas could return. This plan allowed the two chapters to keep ritual separate and sacred. Open communication helped all the women successfully live together under one roof.

“Patience and understanding were definitely necessary especially with everyone getting situated,” says Kayla. “But, it was such a wonderful experience, and we really miss them. Our house is so quiet!” **MARY BLASTIC PAULSON**, Beta Phi House Board President, says, “Every Kappa stepped up to the plate. As a result, our Kappas have a renewed appreciation for their beautiful, historic Kappa home.” The Kite and the Key were united under one roof, allowing inter-sorority sisterhood to flourish, and new friendships to form. 🗝️



Beta Phi President Kayla Hoggatt and Theta's chapter president share a love of their chapters.



Kappa Kappa Gamma and Kappa Alpha Theta members gather around to exchange welcome gifts at orientation night.



Kappa Kappa Gamma and Kappa Alpha Theta members learn names with a name game at orientation night.



*"This experience was certainly and undeniably paramount to personal development and future pursuits both in academia and in life."*



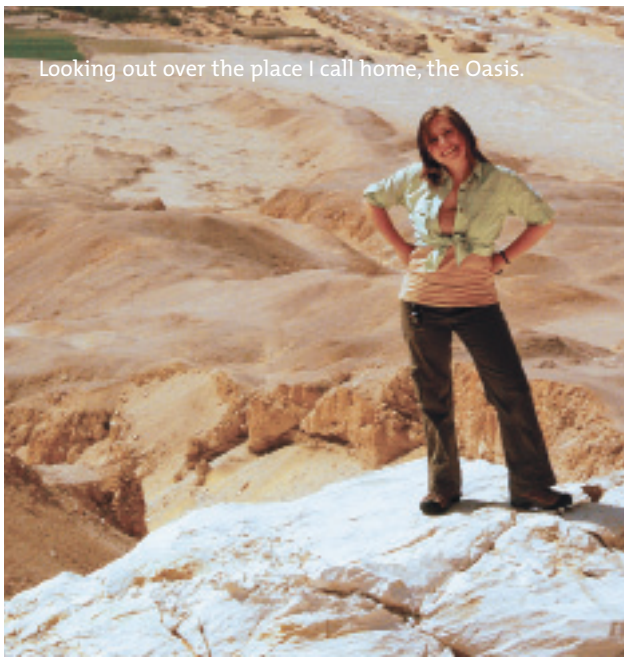
## Discovering Egypt and Self—A Passion for Antiquity

By AISLINN LOWRY, *Illinois Wesleyan*

When I was initiated into the sisterhood of Kappa Kappa Gamma, I could never have imagined spending the spring semester of my junior year in Egypt. I have always been a passionate student of antiquity, but having the opportunity to live in and to study Egyptian society was a distant dream ...until now.

I chose to pursue my passion through Greek and Roman studies at Illinois Wesleyan University where I was perfectly at home in my academic world. But what made this experience as wonderful and special as it is today, is that I also found a loving, loyal, and joyful home within **EPSILON CHAPTER**.

I have had many blessings and successes in my academic and personal endeavors; the apex being my acceptance into the renowned NYU's Excavations at Amheida program in the Dakhleh Oasis. Without the growth in wisdom, management, and people skills, from my time as a member of Epsilon Chapter and as Vice President of Standards, I would not have been able to enjoy this experience to its fullest extent.



Looking out over the place I call home, the Oasis.

My Kappa experience has allowed me to grow exponentially as a person, easing me into adult life and teaching me invaluable lessons. These skills have been immeasurably helpful during my time in Egypt, for the dig house, roughly speaking, is similar to a sorority house in that the team of archaeologists, students, staff, and professors all live and work in a shared space. Without my experience in considerate living through Kappa, I would have found this togetherness daunting. Instead, I have cherished every moment here, as I have gotten to know my team in their personal and professional lives.

Life in Dakhleh is such an experience. Here, the division between civilization and nature is imperceptible as everything is connected to and flows from everything else. Our desert home is crafted earth, whose ceiling is the cloudless sky and whose occupants form a vibrant collection of nationalities, specialties, and cultures that meld into one community, united in passion and purpose. In the desert, life is slow; the main form of transportation is still the donkey. The welcoming and kind people here are predominantly farmers and merchants, and the arrival of electricity in the 1980s brought with it the first paved road and the entrance of this isolated community into the 20th century. Little has changed over the millennia, and it feels very much like I have stepped back in time to experience antiquity, not just to study it.

Overall, this experience has taught me as much about myself as it has about Egypt. I came here with many different thoughts and dreams about what my future might hold. I had no definition, no real understanding of where I would best fit in the myriad disciplines of the realm of the ancient, and very little hands-on experience in archaeology. The NYU Excavations at Amheida program has taught me, just as when I was welcomed into Kappa, that I have landed exactly where I belong. 🗝️



# Scholastic Honors Report

Fall 2008/Spring 2009 data based on reports received at Fraternity Headquarters as of May 25, 2009.

## Chapters at or Above the All-Sorority GPA

### REGION 1

**Beta Province**  
Bucknell

### Rho Province

Babson  
Connecticut  
Yale

### REGION 2

**Gamma Province**  
Cincinnati  
Denison  
John Carroll  
Miami (Ohio)  
Ohio State  
Ohio Wesleyan

### Lambda Province

George Washington  
Johns Hopkins  
William and Mary

### REGION 3

**Mu Province**  
Florida  
Georgia

### Nu Province

Centre  
North Carolina

### Xi East Province

Auburn

### REGION 4

**Zeta Province**  
Missouri

### Theta Province

Texas

### REGION 5

**Delta Province**  
Hillsdale  
Michigan  
Purdue

### Epsilon Province

Wisconsin

### Zeta Province

Iowa State

### REGION 6

**Zeta Province**  
Kansas

### Eta Province

Colorado College  
New Mexico  
Wyoming

### REGION 7

**Kappa Province**  
Cal State Northridge  
San Diego  
UCLA  
UC Santa Barbara

### Pi Province

Oregon

## Scholastically Ranked First on Campus

### REGION 1

**Rho Province**  
Babson  
Yale

### REGION 2

**Gamma Province**  
Cincinnati  
John Carroll  
Ohio State  
Ohio Wesleyan

### Lambda Province

George Washington

### REGION 4

**Delta Province**  
Purdue

### REGION 5

**Delta Province**  
Hillsdale

### REGION 6

**Eta Province**  
Colorado College

## Kappas with 4.0 GPA

### REGION 1

**Alpha Province**  
Marist:  
Kimberly Maddelena

### Beta Province

Bucknell:  
Renee Bernardo  
Ruthie Brown  
Erica Hall

Jane Irwin  
Allie Kukucka  
Lindsay Machen  
Julia Martin  
Brittany Mastin  
Ashley McCracken  
Caity McLaughlin  
Stephanie Rink  
Nicole Samuel  
Emily Steiner  
Lauren Stoller  
Renee Weissend

### Princeton:

Kay Ousterhout  
Colleen Poynton

### Rho Province

**Connecticut:**  
Kristina Forzaglia  
Christine Gratton  
Amy Israel  
Allison Meese  
Julia Moran  
Melissa Rebai  
Kathryn Taft

### Dartmouth:

Natalie Berger  
Amanda Cohen  
Daisy Duan  
Dana Leland  
Jessica Meneses  
Chelsea Place  
Kaytelin Suslavich

### Yale:

Cassie Chambers  
Jennifer Landau  
Lisa Miller  
Hillary Schepps  
Ashley Tallevi  
Abigail Sheehan  
Anna Smith  
Mimi Wang

### REGION 2

### Gamma Province

**Miami (Ohio):**  
Christa Fetzter  
Margaret Matavich  
Julie Mueller  
Katherine Parris  
Jennifer Trotta

### Ohio Wesleyan:

Britta Buchenroth  
Joanne Neugebauer

### Lambda Province

**Virginia:**  
Kingsley Beer

### William and Mary:

Whitley Aamodt  
Kristin Beckett  
Jessica Boysen  
Julia Hayton  
Kathryn Matteson  
Lauren Williams

### REGION 3

### Mu Province

**Central Florida:**  
Stephanie Anderson  
Mallory Carlton  
Ivy Duffy-Erskine  
Rachel Kapelner  
Lauren Kolstedt  
Annikki Laine  
Erin Lissy  
Erin Livingston  
Andrea Mize  
Christine Moyer  
Lauren Perlin  
Mary Roberts  
Christina Rushman  
Emily Strohacker

### Clemson:

Mary Allen  
Ellen Bare  
Elizabeth Bergman  
Amy Boggs  
Caitlin Brunson  
Hannah Davis  
Suzie Fellows  
Lisa Gigliotti  
Kathryn Harris  
Jeannie Hermack  
Amanda Jernigan  
Anne Jones  
Kristin Kierspie  
Ainsley Lightman  
Brooke Loucks  
Courtney Manning  
Charlotte McElveen  
Stefanie Mitchell  
Lela Newell  
Margaret Nicolson  
Megan Parete  
Ellie Peaks  
Alix Pommerenke  
Caitlyn Power  
Jesse Reese  
Sara Ruffner  
Lauren Smith  
Caroline Stuckey

Hayley Thorson  
Caroline Whisenhunt  
Reynolds Wilson

### Florida:

Samantha Akers  
Kayla Anderson  
Amanda Aschenbrenner  
Tessly Dieguez  
Caitlin Dilks  
Shelby Etheridge  
Elizabeth Foppe  
Katherine Gursoy  
Alyssa Karow  
Mary Lantz  
Lauren Malone  
Katherine McCabe  
Lisa McCraw  
Rachel Mentzer  
Alexandra Ricker  
Kristen Scheff  
Dana Solomon  
Valerie Torge  
Taylor Tribou  
Brittany Marie Truman  
Amanda Van Valkenburgh  
Rachel Walding

### Georgia:

Hannah Ashe  
Annick Ashley  
Bailey Blair  
Rose Bryan  
Whitney Bulterman  
Lucia Crenshaw  
Kelsey Deerin  
Blathrae Gillin  
Alexandra Hale  
Katherine Helm  
Abigail Logue  
Kirsten Lundsten  
Kelly Reily  
Margaret Turner  
Elizabeth Waring

### Miami:

Amanda Archer  
Brandi Wysokil  
Laura Robertson

### Rollins:

Kaitlin Causin

### Xi East Province

**Auburn:**  
Cathryn Marie Albright  
Taylor Bradakis  
Catherine Chapman  
Megan Collins  
Katy Donaldson



Mary Quince Douglas  
Kasey Gardner  
Erika Griswold  
Mary Ella Hill  
Kristen Hiott  
Krista Leonard  
Jordan Luke  
Amber McClellan  
Lauren Moore  
Elizabeth Pressler  
Brittney Rieben  
Mary Cathryn Stroud  
Erin Taylor  
Cameron Townes  
Katie Tyra

#### REGION 4

##### Zeta South Province

*Missouri:*  
Elizabeth Bainbridge  
Lauren Beussink  
Calley Bilgram  
Courtney Cady  
Rachel Costello  
Lauren Crawford  
Whitney Deforest  
Amy Doerr  
Erin Dunleavy  
Ashley Ebert  
Leslie Farmer  
Emily Fauth  
Brittnee Finnigan  
Lauren Fischer  
Alyse Galarza  
Joanna Kimball  
Ashten Kimbrough  
Catherine Koch  
Lindsey McDaniel  
Jennifer O'Neil  
Erin O'Sullivan  
Mita Patel  
Kiley Ryals  
Amanda Schnieders  
Sarah Scroggs  
Anna Stephens  
Amanda Sterchi  
Mandee Zervas

*Westminster:*  
Rachel Backes  
Lauren Brohammer  
Jessica Contratto  
Leah George  
Julie Katich  
Liz Klaffenbach  
Samantha Martinez  
Mary Beth Miller  
Jaclyn Muff  
Angela Schenewerk  
Katie Smith  
Shaina Wankum  
Tshering Yangzom

##### Xi West Province

*LSU:*  
Elizabeth Adler  
Anne Baldwin  
Laura Carleton  
Ashley Davis  
Sarah Duhon  
A'Dair Flynt  
Rachael Free  
Taylor Hall  
Melissa Jackson  
Marcy Landry

Logan Ledford  
Kathryn Leithead  
Margaret Patterson  
Mia Scoggin  
Emily Shea  
Chloe Simoneaux  
Amelia Simpson  
Lauren Stout  
Lauren Elizabeth Wren

#### REGION 5

##### Delta Province

*Hillsdale:*  
Amanda Hall  
Elizabeth Peters

*Michigan:*  
Gabi Brazg  
Alexa Eisenberg  
Liz Gingold  
Sarah Leitman  
Natalie Mandel  
Sarah Mintz  
Sara Veltri

*Michigan State:*  
Kelsey Johnson  
Carolyn Kidd  
Angela Napolitano  
Shelby Winstanley

*Purdue:*  
Kelly Colbert  
Abigail Cropper  
Taryn Horney  
Caitlin Huxhold  
Sara McNelis  
Megan Mitcheff  
Kara Palmer  
Hope Parker  
Megan Roof  
Kathryn Sursa  
Kaylie Waltz

##### Epsilon Province

*Monmouth:*  
Kaitlyn Breaux

*Wisconsin:*  
Jenny Anderson  
Heather Hruskocy  
Jessica Norman  
Jane Rotonda  
Lisa Goldstein  
Kristine Keller

##### Zeta North Province

*Drake:*  
Sarah Bannon  
Katie Brower  
Bianca Carbonara  
Jen Casey  
Abby David  
Kristen Erickson  
Clara Haneberg  
Becca Keith  
Molly Lundberg  
Brittany Parmentier  
Caitlin Pryor  
Paige Steffen  
Cindy Zoeller

*Iowa State:*  
Allison Bernard  
Lauryn Dermit  
Kristin Economos

*Simpson:*  
Jackie Suckow  
Emily Van Roekel  
Savannah Gregory  
Autumn Girres

#### REGION 6

##### Zeta West Province:

*Creighton:*  
Courtney Bohn  
Diana Bruguera  
Kit Daniels  
Paige Dixon  
Ashley Dreyer  
Sarah Geisler  
Whitney Hamilton  
Catherine Medici  
Valerie Schneider  
AnaMaria Seglie  
Courtney Tietjen

##### Eta Province

*New Mexico:*  
Diane Anderson  
Meagan Bourne  
Kathryn Boyle  
Amber Cannon  
Erin Gallegos  
Tiffany Lowenstein  
Erika Maestas  
Jacqueline Orozco

#### REGION 7

##### Kappa Province

*Cal State Northridge:*  
Brianna Chai

*UC Irvine:*  
Alyssa DeLeon  
Kaya Fujiwara  
Lisa Gonzales  
Krystal McIntyre  
Susie Ngo  
Vanessa Senteno  
Tiffany Wong

*UCLA:*  
Jamie Bovshow  
Kristin Bryan  
Cathy Bui  
Jacqueline Combs  
Kylee Garton  
Courtney Hammond  
Gina Isaacs  
Sarah Lechner  
Emily Marsh  
Brianna Maxson  
Allison Nottingham  
Lulu Pantin  
Francesca Ruzin  
Amanda Schuman  
Chelsea Williams

*UC San Diego:*  
Lauren Cantrell  
Danielle Ishihara  
Kelsey Fukumoto

Kelsey Lamberto  
Katie Reichman  
Caroline Stevens

*UC Santa Barbara:*  
Alexandra DeGolia  
Traci Diamond  
Evan Hershberger  
Danie Jimenez  
Ashley Johnson  
Katherine Nunes  
Paula Reeve

##### Pi Province

*Oregon:*  
Blythe Alldredge  
Christine Amanatidis  
Sarah Brillhart  
Katie Dally  
Kaley Lincoln  
Eryn Meinhart  
Casey Stephens  
Stephanie Weller  
Rindi Zavodsky

*Santa Clara:*  
Michaela Mailszewski  
Brittany Palumbo  
Irene Tyutereva

-----  
Please report corrections or  
omissions to membership  
services@kkg.org



Photo by MICHELLE BLUBAUGH, Georgia Southern

**BETHANY THOMAS**, Georgia Southern, is Greek Woman of the Year on her campus. A HOPE scholar, Bethany has served as VP-Organization and VP-Standards. She is a psychology major and a member of Order of Omega.

# Kappa values!

Best buys from the KEY SOURCE  
Shop [www.buykappa.com](http://www.buykappa.com)  
or call 800-441-3877 to order



**1.** Navy KKG blanket with light blue edging \$34. Plush light blue blanket with KKG & fleur \$28. Personalize either blanket: \$5 first line, \$4 more lines

**2.** Madras letter hood with matching plaid lining \$59 OR without lining \$49. Other combos on line. **3a.** Drawstring pants, full length: \$27.

**3b.** Touchdown capris with KKG tape at waist, S-XL (junior size) \$28 **4.** BPA free sports bottle (left) \$4.25. Nalgene brand bottle (right) \$11.75.

**5.** Flip flops sz 5-11 Select style: Fleur de lis, KKG on solid color strap or polka dot \$19.95 (sizes 5-11). **6.** Beach towel Reg. \$25 Spec. \$19.95.

**7.** Traditional crew in oxford or navy \$31. **8.** KKG Jar gift set: \$11.75 or buy items alone **9.** New key wrap sterling ring w/fleur full sizes 5-9 \$26

**10.** Keyring, our exclusive \$7.50 **11.** NEW! Laminated tote in black or navy toile exterior, pocketed interior. Reversible \$48

**12.** Letter tote canvas \$16. **13.** Ins bone box \$18. Add initials and date inside: \$7.50. KKG sterling Levaliere: \$14.95; add chain \$9.50

**14.** High visibility metal license plate frame (top) reg \$8 Now \$5.95 Metal wide frame (center) \$8.50. Plastic I'm so happy frame \$3.00

**15.** Tunic with fleur imprint, KKG tape in navy, black, or grey S-XL (junior), \$31 **16.** KKG wood frame \$11.95. **17.** Gold fleur tote on black \$18

**18.** Latte mug \$11.95 **19.** Retro jersey \$19 S-XL Unisex. Also grey with navy \$19 **20.** MOM & DAD shirts \$14 size S-XL Matching mugs with stainless liner: \$9.75. Buy both mug and shirt: get free mom or dad pen worth \$1.75 **21.** Fleur album with KKG panel \$26. Add custom embroidered panel with Kappa's name, school: \$6-\$12. **22.** NEW! Hoody with Kappa and fleur, unisex. S-XL SPECIAL! \$26.00

All products and prices subject to change or correction. Email: [info@buykappa.com](mailto:info@buykappa.com). Phone: 309-691-3877. Fax 309-691-8964  
Address: 1723 W. Detweiler Dr. Peoria, IL 61615. MINIMUM PHONE ORDER \$25 Shipping and handling additional. See web for details.



Have you moved? Changed your name, occupation or e-mail address? Please go to [www.kappa.org](http://www.kappa.org) to update your profile or send in this form.

Full Name: \_\_\_\_\_ Chapter: \_\_\_\_\_

Spouse's Name: \_\_\_\_\_ Home Phone: \_\_\_\_\_

Address: \_\_\_\_\_

Occupation/Interests: \_\_\_\_\_ E-mail: \_\_\_\_\_

Send to Kappa Kappa Gamma Fraternity Headquarters, P.O. Box 38, Columbus, OH 43216-0038,  
[kkghq@kkg.org](mailto:kkghq@kkg.org), 866-554-1870 or fax to 614-228-7809.

Beautiful Brighton®  
Silverplated Charm Bracelets  
from Gamma Phi Alumnae.

**\$45** plus shipping

Order online at:  
[www.kappabracelets.com](http://www.kappabracelets.com)

Or write to:  
Kappa Kappa Gamma Bracelets  
P.O. Box 12404  
Dallas, TX 75225-1404  
for an order form.

Adjustable to 8".  
Perfect gifts for new members, initiates, active members and alumnae!



**ORIENT**  
*expressed*



**yeah for orient expressed !!**

discover the fun ... and the rewards  
become a home show representative  
call 504.895.0207 for info . code kkg

orient expressed . 888.856.3948 . [www.orientexpressed.com](http://www.orientexpressed.com)

Send all notices of address  
changes and member deaths to:  
KKΓ Headquarters  
P.O. Box 38  
Columbus, OH 43216-0038  
Toll Free: 866-554-1870  
E-mail: [kkghq@kkg.org](mailto:kkghq@kkg.org)

## Reading Is Fundamental—Our Philanthropic Partner

*Through a vibrant partnership with Reading Is Fundamental (RIF), Kappas across North America are working to end illiteracy by helping young people in low-income areas discover the joy of reading.*

### Readers Become Leaders!

- ◆ Consider the child who suffers from a learning delay. If he has no books, he may never achieve grade-level literacy. But with free books and support from “Kappa Reading Buddies,” he will find books he can enjoy, putting him on the path to success.
- ◆ Consider the 13 million children living in poverty in the U.S. Few have books at home. If they don’t own books, are not read to, and don’t associate reading with fun, then how will they become lifelong readers, and one day—leaders?
- ◆ Kappa alumnae associations and chapters plan “Reading Is Key” events each year, which include decorations, activities and refreshments. The focus is on reading with pre-K through third-grade children from high-risk schools, day care centers, HeadStart programs, Boys and Girls Clubs or domestic shelters. Kappas provide new books from RIF and assist the children in choosing books that interest them.



*For more about RIF, please visit [www.kappa.org/philanthropy](http://www.kappa.org/philanthropy) or [www.rif.org](http://www.rif.org).*