

KEY OF KAPPA KAPPA GAMMA



PUBLISHED BY BETA NU CHAPTER
OHIO STATE UNIVERSITY
COLUMBUS

"THE KEY,"

Official Organ of the Kappa Kappa Gamma Fraternity.

EDITED AND PUBLISHED BY BETA NU CHAPTER

OHIO STATE UNIVERSITY, - - COLUMBUS, OHIO.

January, April, July and October.

TABLE OF CONTENTS, JULY, 1903.

RUTHANA PAXON. <i>Elizabeth Wilson</i>	147
A SUMMER CHAPTER OF KAPPA KAPPA GAMMA. <i>Ruth Paxon</i>	149
THE KAPPA ON BEACON HILL. <i>E. R. B., '01</i>	150
LIFE AT BARNARD. <i>Margaret H. Stone, Beta Epsilon</i>	152
MORE ABOUT THE NEW YORK KAPPA. <i>Alice Haskell, Beta Epsilon</i>	153
SAGE HALL—THE HOME OF PSI. <i>M. M. Crawford, '04</i>	154
THE CHAPTER HOUSE—A REALIZED IDEAL.....	155
BETA ALPHA AT HOME. <i>Alice Lenore Davison, B. A.</i>	155
THE KAPPA IN THE DORMITORY— <i>Swarthmore</i>	156
A GLIMPSE OF ALLEGHENY.....	157
PERSONAL NOTES.....	158
ALUMNAE DEPARTMENT.....	168
PARTHENON—	
Types. <i>Lee Brown, Beta Mu</i>	169
"Knocking," <i>Chi</i>	169
A Kappa All Year Round. <i>Leola Dockery, Theta</i>	171
Is Life in the Chapter House Narrowing? <i>Beta Lambda</i>	171
PUBLIC ANNUAL REPORTS.....	174
IN MEMORIAM—Mrs. Charles F. Clark.....	212
EDITORIAL NOTES.....	213
POEM—"Kappa Dell".....	216
COLLEGE AND FRATERNITY NOTES.....	217
EXCHANGES.....	220

EDITORIAL BOARD.

Editor-in-chief—LUCY ALLEN SMART.

Exchange Editor—MARION EVANS TWISS.

All Chapter Letters, Literary Articles and Exchanges should be sent to

LUCY ALLEN SMART, 854 Hough Avenue, Cleveland, Ohio.

Entered at the Post office at Columbus as second class matter.

FRATERNITY DIRECTORY.

Grand Council.

GRAND PRESIDENT—May C. Whiting Westerman, St. Louis, Mo.
Address—Mrs. Theodore Westerman, 5100 Fairmount Ave., St. Louis, Mo.
 GRAND SECRETARY—Mary D. Griffith, . . . 201 Manheim St., Germantown, Pa.
 GRAND TREASURER—Virginia Sinclair, Box 401, Normal, Ills.
 GRAND REGISTRAR—L. Elmie Warner, Plain Dealer, Cleveland, O.
 EDITOR OF "KEY"—Lucy Allen Smart (Mrs. George Smart),
 854 Hough Ave., Cleveland, O.

Deputies.

GRAND PRESIDENT'S DEPUTY—Martha Blanche Hargreaves,
 1528 R St., Lincoln, Neb.
 GRAND SECRETARY'S DEPUTY—Mary R. Scattergood,
 471 N. Marshall St., Philadelphia, Pa.
 GRAND TREASURER'S DEPUTY—Flora B. Jones, E. Monroe St., Bloomington, Ill.
 GRAND REGISTRAR'S " —Gladys Parshal, 50 Fay St., . . Akron, Ohio.
 EDITOR'S DEPUTY—Marion E. Twiss, . Librarian, University, North Dakota.
 HISTORIAN—Minnetta Theodora Taylor, Greencastle, Ind.

Alumnae Associations.

BOSTON ALUMNAE ASSOCIATION—Alice Quirin, 19 Chester St., W. Somerville, Mass.
 NEW YORK ALUMNAE ASSOCIATION—Mrs. J. E. Welch, 10 W. 66th. St., N. Y.
 SYRACUSE ALUMNAE ASSOCIATION—Mary E. Todd, 742 S. Bush St., Syracuse, N. Y.
 PHILADELPHIA ALUMNAE ASSOCIATION—Mrs. M. C. Betts,
 6008 Main St., Germantown, Phila., Pa.
 COLUMBUS ALUMNAE ASSOCIATION—Miss May Cole, 156 S. 18th St., Columbus, O.
 CLEVELAND ALUMNAE ASSOCIATION—Miss Edith M. Twiss,
 47 Elberon Ave., Cleveland, O.
 AKRON ALUMNAE ASSOCIATION—Miss Lydia Van Voris, 206 S. Union St., Akron, O.
 WOOSTER ALUMNAE ASSOCIATION—Mrs. R. C. Taylor,
 Taylor Flats, E. Liberty St., Wooster, Ohio.
 DETROIT ALUMNAE ASSOCIATION—Miss Lulu B. Southmayd,
 1141 Third Ave., Detroit, Mich.
 BLOOMINGTON (Ind.) ALUMNAE ASSOCIATION—Mrs. L. Van Buskirk,
 321 N. Walnut St., Bloomington, Ind.
 INDIANAPOLIS ALUMNAE ASSOCIATION—Miss Inez Elliott,
 1566 East Market St., Indianapolis, Ind.
 GREENCASTLE ALUMNAE ASSOCIATION—Mrs. Charles S. Preston, Greencastle, Ind.
 BLOOMINGTON (Ill.) ALUMNAE ASSOCIATION—Miss Flora B. Jones,
 Bloomington, Ill.
 CHICAGO ALUMNAE ASSOCIATION—Mrs. Daniel Du S. Otsstott,
 317 W. 61st St., Chicago, Ill.
 ST. LOUIS ALUMNAE ASSOCIATION—Mrs. Herbert S. Morriss,
 5634 Bartmer Ave., St. Louis, Mo.
 MINNESOTA ALUMNAE ASSOCIATION—Miss Edith V. Selover,
 29 Ash St., Bryn Mawr, Minneapolis, Minn.
 LINCOLN ALUMNAE ASSOCIATION—Miss Stella B. Kirker,
 636 So. 17th St., Lincoln, Neb.
 LAWRENCE ALUMNAE ASSOCIATION—Miss Marguerite E. Wise,
 1244 Tennessee St., Lawrence, Kansas.
 KANSAS CITY ALUMNAE ASSOCIATION—Mrs. N. L. R. Taylor,
 1014 E. 15th St., Kansas City, Mo.
 DENVER ALUMNAE ASSOCIATION—Miss Gertrude F. Wood,
 1636 Gilpin St., Denver, Col.
 BETA IOTA ALUMNAE ASSOCIATION—Miss Helen D. Walker,
 1617 Green St., Philadelphia, Pa.
 PI ALUMNAE ASSOCIATION—Miss Ethelynd McClyman,
 447 Plymouth Ave., Oakland, Cal.

CORRESPONDING SECRETARIES.

Alpha Province.

- Phi, Boston University, Boston, Mass.—Elsie Vose Tucker, 12 Somerset St., Boston.
Beta Epsilon, Barnard College, New York City—Emilie J. Hutchinson, 287 Carroll St., Brooklyn, N. Y.
Psi, Cornell University, Ithaca, N. Y.—Margaret Rolston, Sage Hall, Ithaca, N. Y.
Beta Tau, Syracuse University, Syracuse, N. Y.—Faith J. Coon, 718 Irving Ave., Syracuse, N. Y.
Beta Alpha, University of Pennsylvania, Philadelphia, Pa.—Ida M. Solby, 4725 Leiper St., Frankford, Philadelphia, Pa.
Beta Iota, Swarthmore College, Swarthmore, Pa.—Agnes H. Sibbald, Swarthmore, Pa.
Gamma Rho, Allegheny College, Meadville, Pa.—Helen McClintock, 473 Walnut St., Meadville, Pa.

Beta Province.

- Lambda, Buchtel College, Akron, O.—Elizabeth Voris, 108 S. Union St., Akron, O.
Beta Gamma, Wooster University, Wooster, Ohio—Mary Lehman, 147 E. Bowman St., Wooster, Ohio.
Beta Nu, Ohio State University, Columbus, Ohio—Edna S. Pratt, 433 E. Town St. Columbus, Ohio.
Beta Delta, University of Michigan, Ann Arbor, Mich.—Sophie R. St. Clair, 1414 Washtenaw Ave., Ann Arbor, Michigan.
Xi, Adrian College, Adrian, Mich.—Mary J. McCollum, South Hall, Adrian, Mich.
Kappa, Hillsdale College, Hillsdale, Mich.—Belle Ammerman, 227 N. Manning St., Hillsdale, Mich.

Gamma Province.

- Delta, Indiana State University, Bloomington, Ind.—Alice De Vol, 502 Washington St., Bloomington, Ind.
Iota, DePauw University, Greencastle, Ind.—Lucia Hurst, Kappa House, Greencastle, Ind.
Mu, Butler College, Irvington, Ind.—Essie Hunter, 5651 E. Washington St., Irvington, Ind.
Eta, University of Wisconsin, Madison, Wis.—Mary Alice Gillen, 421 Park St., Madison, Wis.
Beta Lambda, University of Illinois, Champaign, Ill.—Helen F. Stookey, 404 John St., Champaign, Ill.
Upsilon, Northwestern University, Evanston, Ill.—Gem Craig, Chapin Hall, Evanston, Ill.
Epsilon, Illinois Wesleyan University, Bloomington, Ill.—Bessie Cash, 1106 Prairie St., Bloomington, Ill.

Delta Province.

- Ghi, University of Minnesota, Minneapolis, Minn.—Helen P. Burbridge, P. O. Box 724, University of Minnesota, Minneapolis, Minn.
Beta Zeta, Iowa State University, Iowa City, Ia.—Marie Lynch, 512 E. Bloomington St., Iowa City, Ia.
Theta, Missouri State University, Columbia, Mo.—Leota L. Dockery, 411 S. Hett St., Columbia, Mo.
Sigma, Nebraska State University, Lincoln, Neb.—Zoe L. Glidden, 321 N. 16th St., Lincoln, Neb.
Omega, Kansas State University, Lawrence, Kan.—Maud Olander, Kappa House, Lawrence, Kan.
Beta Mu, Colorado State University, Boulder, Col.—Harriet V. Allen, 1139 12th St., Boulder, Col.
Beta Xi, Texas State University, Austin, Tex.—Mary V. Rice, Grace Hall, Austin, Tex.
Pi, University of California, Berkeley, Cal.—Varina Morrow, 2604 Durant Ave., Berkeley, Cal.
Beta Eta, Leland Stanford Jr. University, Cal.—Zoe P. Larkin, Box 96, Stanford University, Cal.





MISS RUTH PAXSON.

THE KEY

VOL. XX.

JULY, 1903.

No. 3.

RUTHANA PAXSON.

By ELIZABETH WILSON, Executive Sec'y of the American Committee.

A TRUE service which Kappa Kappa Gamma has been able to render college women, and hundreds of other young women in American homes and cities as well, has been in helping to prepare Ruthana Paxson for the great work she is now doing for Christ and young womanhood.

Miss Paxson is an Iowa girl, born during the Centennial year at Manchester, which is still her home when she is so fortunate as to be at home. When only sixteen she went South with her invalid father, traveling in search of health for two years.

In 1894 she entered the University of Iowa and became a member of K K Γ that September. In '96 she attended the K K Γ convention at Evanston and was then deputy treasurer for two years, while Annabel Collins was Grand Treasurer.

In 1898 Miss Paxson was graduated, being one of the commencement speakers, and was also elected to the Phi Beta Kappa. During her senior year Miss Paxson was president of the student Young Women's Christian Association. The opportunities for personal and permanent helpfulness through this organization had appealed to her in this year of Christian leadership, and in her attendance upon the summer conferences and conventions of the Association, she sought, like every true fraternity woman, to set her life in the place of widest influence. Accordingly she spent ten months in Bible study and distinct Association preparation, and January 1st, 1900 became state secretary of Iowa. For nearly three years her time was occupied in visiting colleges,

advising about student problems, holding evangelistic meetings, suggesting better methods of social and practical work, teaching the Bible and talking quietly with the thousands of students who sought her counsel about the true basis of life, faith in Jesus Christ, and about the true purpose of life, glad and whole-hearted service to Him. Many college women living in the cities in the state were eager to have Miss Paxson's help in establishing Association work in their community, and as a result four new city Associations were formed during Miss Paxson's stay in the state.

Whether speaking to a score of young girls in some little obscure school, in which these emblems were unknown, or whether addressing a great audience of college women from forty or fifty Eastern colleges, to whom they were intelligible, the Kappa Kappa Gamma and the Phi Beta Kappa keys have always testified that one who had much, who was much, had and was only for the glory of God.

That which *does*, which *knows*, which *is*, are all in Miss Paxson's life wholly dedicated to Christ.

In 1902, The American Committee, recognizing Miss Paxson's great ability and her remarkable acceptability in student circles, called her as student secretary for State Universities. During this past year she has visited the State Universities of Illinois, Indiana, Ohio, Michigan, Kansas, Iowa, Nebraska, and South Dakota, as well as the University of Chicago, Northwestern University, etc., etc. The four hundred and fifty college Young Women's Christian Associations affiliated with The American Committee will all come more or less directly in touch with Miss Paxson as she speaks at the great student conferences at Asheville, North Carolina, Lake George, New York, and Lake Geneva, Wisconsin.

When she graduated a girl said, "I believe no girl ever graduated from this university who was so personally interested in every girl, irrespective of fraternity, literary or social circle as you have been," and this same attitude she has helped many fraternity women to assume.

Miss Paxson is tall, straight, impressive looking and lovable at the same time, if the combination can be imagined. She has a keen appreciation of humor and the most unselfish delight in the humor of others, a wonderful sympathy, and so intimate a

knowledge of God that those hungering for the deep and real things of life instinctively turn to her.

I once heard her say, "I wanted to know what God could do with a young woman wholly obedient, and so I have tried to understand and obey Him in all things". Those of us who know her as a secretary realize the power of an educated woman who really tries to fit her life into a great plan.



A SUMMER CHAPTER OF KAPPA KAPPA GAMMA.

BY RUTH PAXSON.

HOW good these words must sound to the Kappa sisters who are almost at the close of another year in college, and are already feeling sad at the thought of parting; how welcome must they also be to those who have been away from the happy Kappa Circle for several years, perhaps, and who long for the sight of a Kappa Key!

Why should we not have a summer Chapter of Kappa Kappa Gamma, and what better place could be found than the Summer Conference of the Young Women's Christian Association? There are four of these Conferences held each summer: at Capitola, Cal.; Silver Bay, Lake George, N. Y.; Asheville, N. C.; and at Lake Geneva, Wis. Three of these assemblies are now past, but the one at Lake Geneva is still before us,—Aug. 15-25.

Lake Geneva is one of God's rarest pieces of handiwork, a sheet of water clear as crystal surrounded by gently sloping green, and it has earned for itself the beautiful description of a "solitaire diamond set in emeralds." Upon a green slope at one end of the lake is the camp where the conference assembles.

Nearly six hundred of the best and most earnest young women from our colleges and universities of the middle states and the north-west gathered at Lake Geneva last summer, and for ten days conferred about Association work, Bible study, and training for Christian service. This summer the number, no doubt, will be still greater.

Each summer has found twelve or fifteen Kappas among the delegates to the Geneva Conference, and we have had pleasant times. But the number should be greater. Why not have each

Chapter, near enough to Lake Geneva, send a delegate to the August gathering, and then we could form a summer Chapter of Kappa Kappa Gamma there. It would mean much for every Chapter to come into such close touch with the girls of other Chapters, and to feel the beauty of the fellowship which comes not only through the Kappa tie, but the larger, more beautiful fellowship which comes through the life in Christ and which belongs to God's children.

If we study our Kappa ritual, we shall find its purpose to be the development of all those finer sympathies and womanly virtues which go to make up perfect womanhood. The purpose of the Young Women's Christian Association is to show that all these sympathies and virtues center in Jesus Christ, and its aim is to lead young women to give Him fully their lives. What an inspiration to higher and better living as the realization of our own Kappa ideals could be carried back by each delegate to Lake Geneva!

Come, then, all who can, and let us form a summer Chapter of Kappa Kappa Gamma at Lake Geneva, and repeat the old-time Kappa meeting down by that beautiful lake.



THE KAPPA ON BEACON HILL.

ALTHOUGH the founders of Boston University doubtless showed great wisdom and appreciation of historic influence, in choosing Beacon Hill as the site of their college, yet they were quite oblivious to the demands which would arise when fraternities came to be introduced to relieve the routine of student life.

For Kappa Kappa Gamma or any of her sister societies to own a fraternity house in the neighborhood of Boston University would be beyond the "wildest dreams of avarice." We Boston girls do not speak of "our house", but of "our rooms", and there was a time when the use of the plural was justified only by including the closet.

Now however, we have far more commodious quarters. One whole floor of a city house on Ashburton Place is ours to command. This includes one very long, wide room extending from the front to the back of the house, and possible of division into two apartments, though the portieres hung for that purpose are seldom drawn; a big closet, which serves as store-room, pantry and china closet; and a spacious kitchen where "spreads" and "treats" can be prepared out of sight of the guests to be regaled.

This last room is most highly appreciated by us who remember the inconveniences connected with carrying on culinary operations in a corner behind a screen. Just as our grandmothers and grandfathers enjoy telling us of the comforts which they had to do without, so we older Kappas delight in describing the devices we were put to, "in the days before there was any kitchen." But of course somethings were better in "those days." As the rooms are heated by steam there is no excuse now for a fire in the grate except when marshmallows are to be toasted, and so the delightful occupation of poking the fire is debarred.

Of the things we do in our rooms there is little need to speak. I imagine all Kappas from Massachusetts to California are for the most part similarly occupied.

All the phases of student life, grave and gay, are reflected in the big mirror which our landlord, with due appreciation of feminine needs, had set into the wall of the chapter room. Sometimes the reflections shows a serious conclave discussing Kappa business; sometimes they reveal the floors bared of rugs and a dance in progress; sometimes the place appears littered with books and anxious faces tell of impending examinations; sometimes the mirror knows there is a festivity in prospect at college for every Kappa, arrayed "in purple and fine linen", is striving to get a glimpse of herself over someone else's shoulder; sometimes,—but the mirrors of all Kappa rooms see the same sights, and you know what they are.

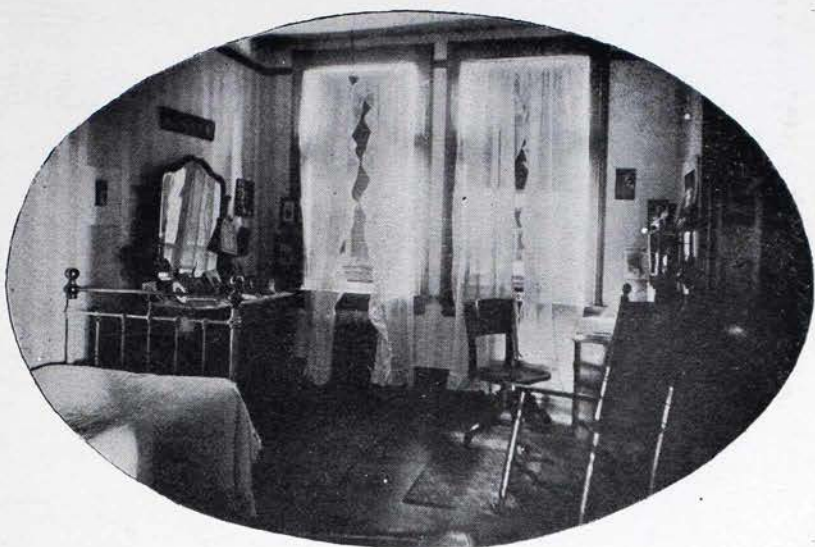
E. R. B. '01.

LIFE AT BARNARD.

BETA EPSILON enjoys its Chapter Life in many ways. There are teas of course, college teas with fudge in plenty and always "mair in the kitchen." And more formal affairs happen also. Receptions to the different classes of the college, rushing parties—for we must know are prospective freshmen—plays, Christmas trees, and last but not least, those best loved of all Kappa festivities—spreads. There it is that Beta Epsilon blossoms out.

Spread time with us is always uproarious. From the depths of the kitchen (which, by the way, is about 4 x 5) come strange sounds. There is press-gang service of Freshmen, for it is the duty of the Kappa children to serve their elders at our spreads. The creak of ropes tells that the ice cream is being hauled up on the dumb-waiter by some strong-armed Kappa. There is a story that a punch-bowl once crashed down nine flights, so we all cry "careful" till the cream has come safely up. But that is only a story, and—hear! there goes the door bell. "What, another Grad! It would never be a spread without you, Edith, and isn't Alti coming? So it goes as the Chapter gathers—the active members and girls whose state of Kappahood has lasted many years. The long table in the Chapter room is pressed into service, the divans are crowded, the chairs filled, and then the rest of us take, quite naturally, to the floor. Supper comes with toasts and laughter. Afterwards we all gather together and do "stunts," many and glorious, and sing songs, which Kappas have often sung before, and others of our own invention which they have not yet heard. In the spring we walk out together down the drive in the twilight, till the dust falls over the river, and then back to our home on the ninth floor.

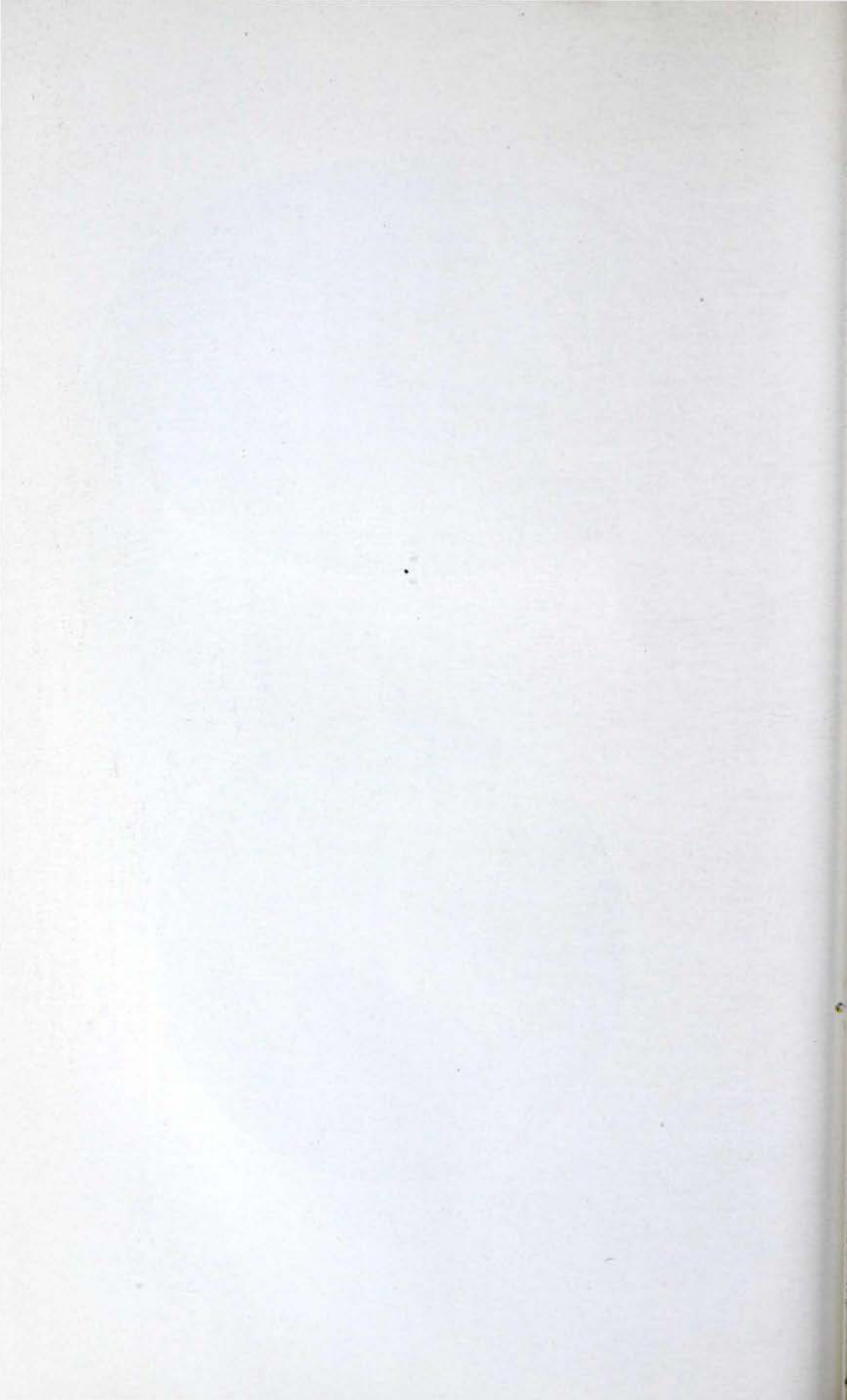
The Kappa apartment has a fan-like quality of contraction and expansion at need. On spread nights, dance nights, and when jollities and what not abound, then its dimensions are lordly. There is room for all out of town Kappas and for New York girls besides. Have we not many extra divans and a ready welcome. On the next day the apartment contracts, and becomes its normal



BETA EPSILON CHAPTER ROOMS.



BETA EPSILON CHAPTER ROOMS.



self once more, with its little green parlor and the Chapter room jealously shielded from the eye of the uninitiate, and beyond that the rooms of the apartment girls. We might talk for hours about our happy life there and the times we spend together. We hope that many other Kappa sisters may find opportunity to visit us and find from experience what a merry life goes on in the Chapter-room of Beta Epsilon.

MARGARET H. STONE, *Beta Epsilon*.



MORE ABOUT THE NEW YORK KAPPA.

TO MANY a girl who comes to college from a distance, fraternity life makes the place far pleasanter than it could otherwise be, but this is undoubtedly more often true in a city than in a country college, and most marked of all here at Barnard. A very large majority of Barnard girls live in New York; in fact, one takes it for granted that a student lives in "the city" until informed that she does not. These girls, of course, have many interests outside of college. They come to classes for a few hours every day to be sure, but it is easy for them to escape from the college atmosphere, and to find in their homes and their own circles of friends as much society and recreation as they wish. With the out-of-town girls at Barnard it is very different. She must make an 11 x 8 dormitory room her home during the college year, and as a rule must look for her recreation, solely among her college friends. Yet these friends, if they are New Yorkers, have too many outside interests to see a great deal of their out-of-town classmates unless there is some bond to make their interests the same. This is where the fraternity steps in, and assures the stranger of warm friends and no more lonely hours.

ALICE HASKELL, *Beta Epsilon*.

SAGE HALL—THE HOME OF PSI.

PSI CHAPTER has no Chapter house. The question of starting one has often been discussed. In fact each year the freshmen get greatly worked up over the idea, draw up plans and estimates, and excitedly lay them before us at chapter meeting. But calm deliberation each year shows us that as yet it cannot be done, and we settle down to the old life of meeting in the girls rooms as formerly.

Only a few weeks ago at Pan Hellenic one of the four fraternities proposed the scheme of all of us taking chapter houses. It was voted down, for the present, but it was decided that, when the time was ripe, all four would take the step at once. This would equalize the difficulties of getting to know the new girls when you didn't live in the dormitory with them.

Our informal way of having no real chapter room has many charms and advantages. It gives each girl the pleasure of entertaining her sisters at some time in the year. And by keeping us all in the big dormitory it keeps us more closely in touch with our class and college interests. Class spirit is very strong here, both in fraternity and out, and it is for the good of Cornell women that we do nothing to lessen it. We have found that we can keep our high fraternity ideal and loyalty while losing not a jot of our class spirit and our college loyalty. The two aid each other instead of the one interest pulling away from the other. This is as it should be.

At present, Sage College is the center of the women's activities at Cornell. Here most of us live, here the meetings of the various organizations are held, here our plays, class stunts, dances, basket ball games, etc. are given. Withdrawal of the fraternities from Sage would mean the withdrawal of the most representative girls of the University. Out of Sage, we could not be the power we are in our college activities. This would hurt both the college and the fraternities. It is pleasant to have fraternity houses but we feel that for us at Cornell, we've worked out the best plan. We need the college interests, they need us; we stand or fall together.

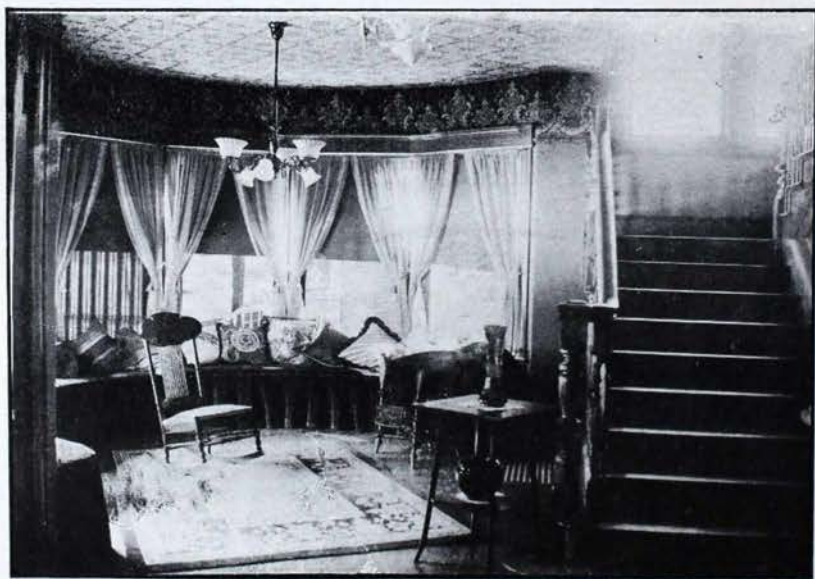
M. M. CRAWFORD, '04.



BETA TAU CHAPTER HOUSE.



INTERIOR VIEW—BETA TAU CHAPTER HOUSE.



INTERIOR VIEW—BETA TAU CHAPTER HOUSE.

THE CHAPTER HOUSE—A REALIZED IDEAL.

WE, of Beta Tau, are proud of our Kappa home. It is on University Hill, conveniently near the colleges, second in a row of four Chapter houses. We cannot exactly call it our own, but the owner built it for us and according to plans that we ourselves made. This gave us opportunity to have a large Chapter room, with windows on three sides from which we have a beautiful view of Onondaga Valley. We think it right to dedicate the best room to the Kappa shrine. All the rooms downstairs have hard-wood floors. In the evening, after dinner, the rugs are thrown back and the girls dance or sing until study hours. The library is the favorite rallying place, where we gather to talk and sing our Kappa songs. The house is built to accomodate eighteen girls and chaperone. It would be hard to imagine a stupid time with so many girls together. Our principal social occasions are the birthday dinners, rushing parties, and entertaining the different chapters of the men's fraternities. Halloween night is the jolliest of the year when we masquerade and perform the usual weird rites.

However, the events which we write about are not the important ones to us. It is our every day association with one another. The spare moments when we laugh and talk together, around the dining-room table or in our rooms with a chafing dish as the center of attraction, that we think the most of. We hope that any of you will remember, when you pass through Syracuse, that our home is always open to our Kappa sisters.



BETA ALPHA AT HOME.

"Ai Korae Athenes!"

WE are sitting in the half light of the spring evening, with the windows open to get the breeze, for it is warm in Philadelphia. Two or three of us have come from our work with evil-smelling mixtures and puzzling solutions to the K K T room, to rest and have a picnic supper before the meeting

in the evening. As we sit silent in the friendship that needs no entertaining, the familiar whistle and song of the call is heard, and up the stairs comes the rest of Beta Alpha.

The room is small, but large enough to hold eleven Beta Alphas and even a few alumnae at a pinch. Once in a while it is astonished to find itself the scene of a tea to Beta Iota or visiting Kappas, but generally it is simply the dear Kappa home. We no longer hold our meetings in the nomadic fashion of last fall, although it was pleasant to extend the hospitality of our homes to Kappa; but in the cosy little "three story front" we sit around the chafing dish after business sessions and sing "Pennsy" and Kappa songs to the banjo, or talk soberly of the time when these things shall be only memories.

ALICE LENORE DAVISON, *B. A.*



THE KAPPA IN THE DORMITORY—SWARTHMORE.

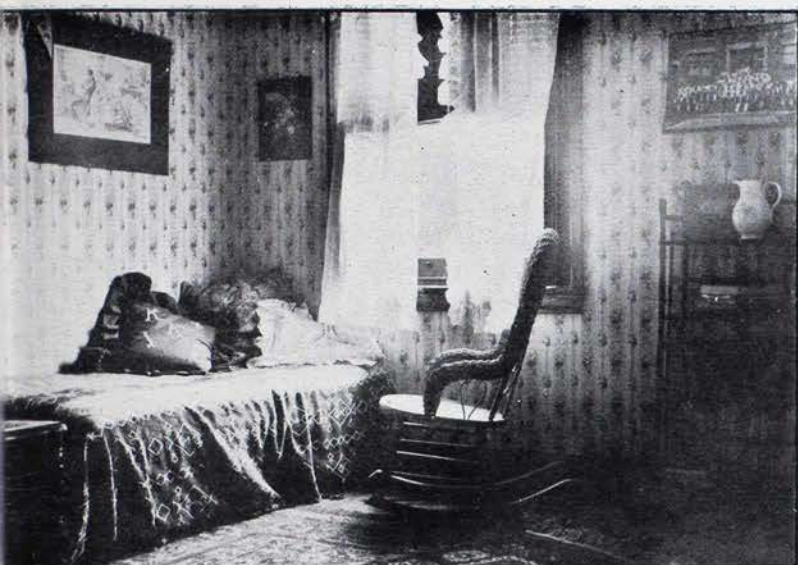
IT IS Beta Iota's misfortune not to be able to show you pictures of a cozy chapter house—but alas, such things are not for us, and only in our wildest and brightest dreams dare we even imagine such good fortune. Swarthmore is above all a home college and everything is arranged with a view to making the life of the students as much that of the home as possible.

All living under one roof as we do, there is not even a possibility of having a chapter room entirely apart from College.

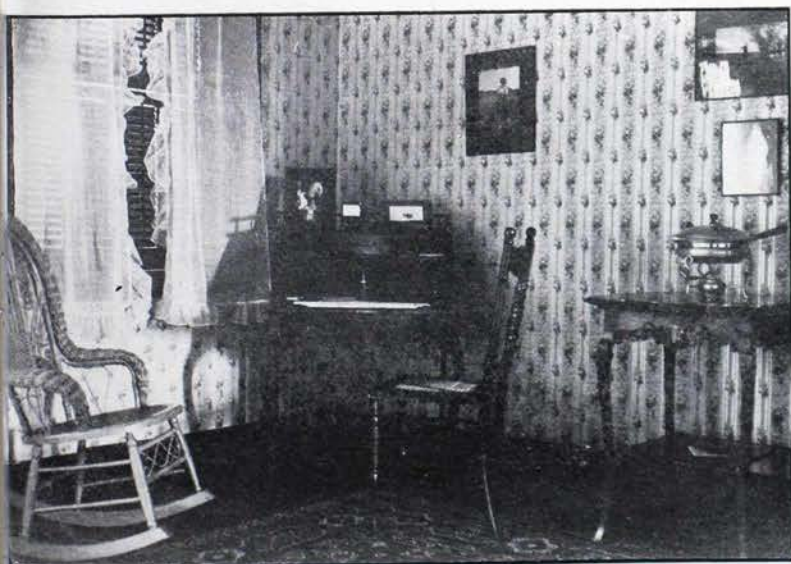
Our chapter room is usually the tiny study belonging to two Seniors. This room is each year a different one and Pi Beta Phis, Kappa Alpha Thetas, and Kappa Kappa Gammas, in turn live and dwell and have their meetings in each of these little rooms.

Could the walls but speak, an interesting lot of information they could give.

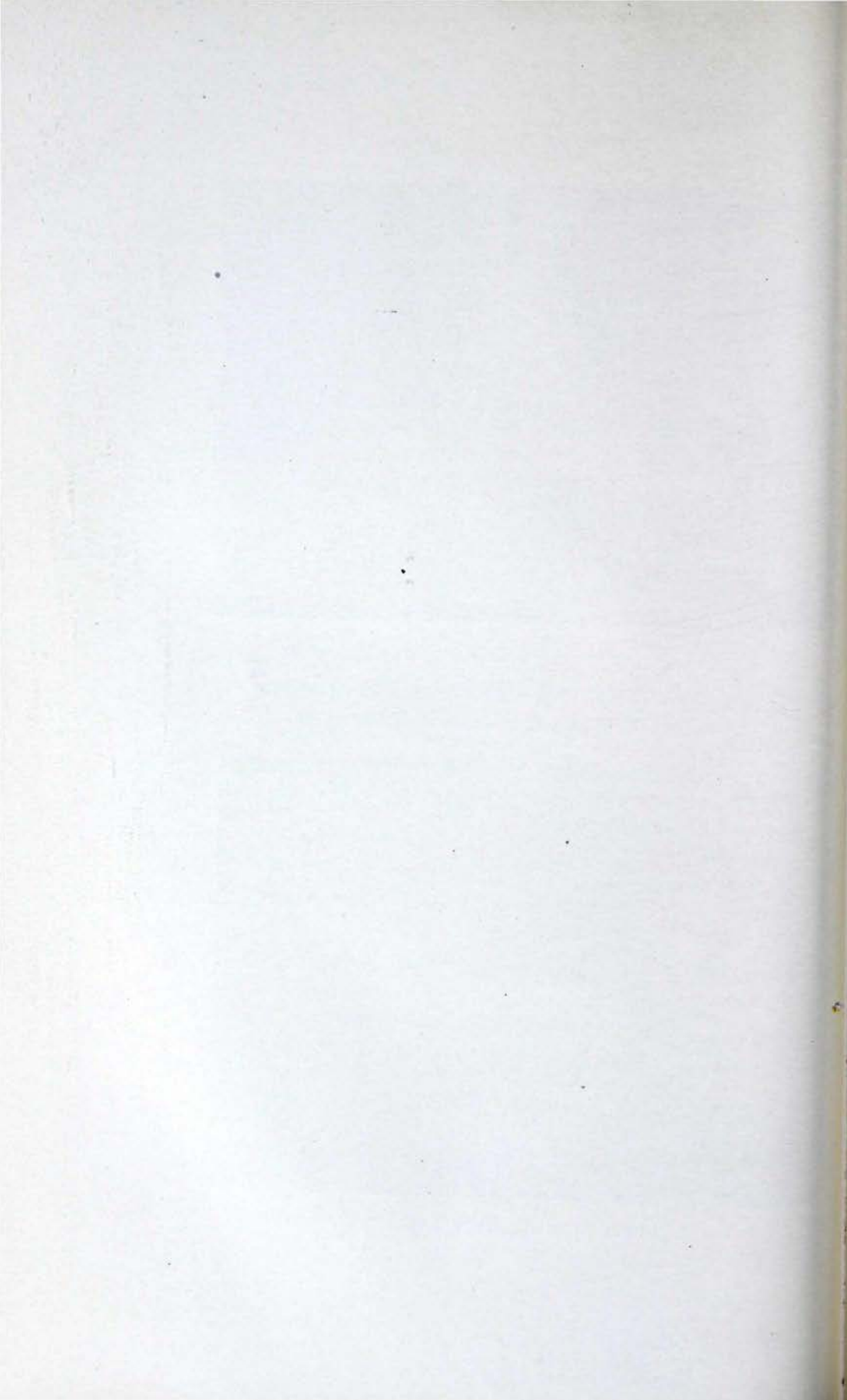
We live very happily, however, in these little rooms of ours—during the fall and winter months they are the scene of many a jolly "feed." Here we entertain Alumnae, visitors and freshmen with tea and talk in the afternoons.



BETA ALPHA CHAPTER ROOMS.



BETA ALPHA CHAPTER ROOMS.



On the pleasant spring evenings, we sit in the wide window-seats and by only the light of the moon we strum idly on the banjo and sing softly.

These little rooms are really the centre of the chapter life—year by year, the chapter's pictures and pillows and the chairs carved deep with the initials of Beta Iotas, who have gone from College, are moved from room to room.

It is piled high with the books, sweaters, and skates of the entire active chapter during winter, filled as full with books, tennis-racquets, and golf-sticks in summer.

So even though we have no chapter-house, you see we are happy in the jolly busy life of a small College.



A GLIMPSE OF ALLEGHENY.

TWO rooms on the fourth floor of Hulings Hall comprise Gamma Rho's fraternity home. The large front room, where we hold our meetings, is furnished in the two blues relieved by ecru. At one end, the piano is the center of attraction; the cozy corner, which occupies an offset at the other end, receives its share of attention. With the pictures along the walls, the chairs, and the lamps, the room is very homelike. Here Mrs. Portter Brown, our beloved skeleton, holds forth, while we gather at her feet and think how much more profitable is her present than her former condition, when she murdered her husband, was imprisoned in "the Tombs" and at last committed suicide.

Across the hall is the dining room, which we have very recently refurnished. The large table occupies the center of the room, the chairs are placed along the sides, and a corner seat is piled with cushions. Plates are ranged along the rack and cups hang from hooks just below. Behind the screen at the farther end of the room is the corner we call "the kitchen," where the hot plate and the cooking utensils are kept. Many and jolly are the spreads held here; some of our happiest hours have been spent in the other room; and while we sometimes long for a chapter house, we are truly grateful for our own small home.

Personal Notes.

PHI.

Eva Doraine Phillips, '03, has been chosen class poet.

Florence Bryant Colby, '03, will sail in July for Europe, where she expects to spend several years in study at the University of Paris.

Mabelle Clark Pelton, '87, has lately published a novel—"The Tar-heel Barn."

Josephine Short, '86, will conduct a party abroad this summer.

Alice Crane, '03, will spend the summer at Amherst, taking a course in library work.

BETA IOTA.

'93. Mrs. C. Hamlet Petters (Frances Stevenson), has now two children, both girls.

'94. Lydia Biddle, who was graduated last year as a trained nurse at Johns Hopkins University, has since returned to Philadelphia.

'97. To Mr. and Mrs. S. Warren Hall (Gertrude Scott) was born April, 1903, a boy, named S. Warren Hall, Jr.

Ex-98. Helen S. Marshall, who has been living in Denver, Col., has returned to her home in Trenton, N. J. for an indefinite time.

Ex-98. Mr. and Mrs. S. D. Townsend (Helen Cheans) have changed their residence from Chambersburg to Wilmington, Del.

'00. Mary Gertrude Ball is to be married to Mr. Nevin Hushed, June 1st, 1903. They will reside in Merchantville, N. J.

Ex-'00. Katharine L. Brooks and her mother are now on the way home to Sandy Springs, Md. from California, where they have passed the winter.

Ex-'02. Mrs. Wallace Barr (Gertrude Griscom), after spending a few months visit with her friends and family has returned to her home in Escanawba, Mich.

'02. Ethel Beardsley who was awarded membership in Φ B K fraternity on completion of her college course has been teaching in the Swarthmore Preparatory School this year.

'02. Amelia Hines has pursued her vocal instruction this year in Baltimore.

Ex-'05. Elsie von Ramdoler is taking a course in kindergartening in N. Y.

LAMBDA.

Mrs. H. R. Hall (Clemnia Barber), '00, has a girl baby named Helen.

Blanche Widdecombe, '97, will teach in Buchtel Academy next year.

Leona Reed, '99, will teach in the High School, Kent, O.

Bertha Huston, '99, was married in June, to Mr. L. C. D. Leonard, Akron, O.

May Foote, '99, will teach in Kent public school.

Hattie Van Orman, '94, is to be married soon, to an Akron man.

Margaret James, '96, of Washington Court House, is in Akron studying in the Business College.

Amy Heriff, '94, will teach in Ravenna High School, Ohio.

Eva Dean, '94, Sioux City, Ia., expects to go abroad this summer.

Mrs. Koonts (Mable Goodwin), has a baby boy.

Mrs. H. L. Canfield, '86, (Mary G. Webb), has been ill in Boston and lost her youngest boy.

Inez Parshal, '02, will teach in Cuyahoga Falls High School, Ohio.

Hattie Hammel has gone to Chicago, to work in the Whitman Barnes office.

Ada Starkweather and Elizabeth Voris (active) won prizes in the Ashton Oratorical Contest this year.

Nona Waters is teaching in Sioux City, Ia.

Maude Herndon, '01, is attending the Chautauqua Library School.

Lydia Voris is attending Dana Hall, Wellesley, Mass., this year.

Anna Durling, '01, will spend next winter in Iowa.

Mrs. Lillian Hunter, of Tidiacite while visiting friends in Akron, kindly favored the Kappas with a visit to their fraternity room.

Miss Eva Hart of Gamma Rho, was present with us on Friday, May 15th, and attended Tuesday exercises.

Miss Rhea Hugill, '01, has spent the spring months in Adrian, Michigan, with her mother, whose health is impaired.

BETA GAMMA.

Mrs. Vinnie Harper Annat is serving her second year on the Woman's Advisory Board of Hoover Cottage and will entertain several members of the Board during commencement week.

Frances Glenn, is doing excellent work, as Instructor of Music in Wooster Conservatory of Music.

Jane Glenn, '01, is in California where she spent the past winter.

Mrs. Sylvia Firestone Adams and family have joined Mr. Adams in Abilene, Kansas, where they expect to make their home.

Emmeline McSweeney is teaching in the Preparatory Department of Wooster University.

Born to Mr. and Mrs. Frank Horn, a son. Mrs. Horn (nee Lucy Ross), is a graduate of Wooster Conservatory of Music.

Laura Kean will continue her work in Wooster High School.

During the month of March, a son was born to Mr. and Mrs. Carey Gregory of Brazil, Ind. Mrs. Gregory was Fanny Dysart, '96, Wooster.

Alice Smith, Mary Marshall and Mary Mateer have been teaching in the Asheville Seminary, Asheville, North Carolina.

Winona Hughes has a good position as instructor in the Mansfield High School.

Cora Altman, '97, will spend this summer in England.

Inez McKee, '97, is teaching in the college at Clinton, Mo.

Eleanor Ewing is enjoying her work in Little Rock, Arkansas, where she has opened a studio for instrumental music.

Bess Dalzell is soon to be married to Mr. Laced, manager of the Smith-Premier Typewriter Co., of Cleveland, Ohio.

Gertrude Hatfield has spent the past winter teaching in the Deaf and Dumb Asylum at Columbus.

Jane Good graduated in music last month. Her recital was enjoyed by many.

Elizabeth Humpreys will spend the next year teaching in Portland, Ind.

Kate Deer expects to spend part of her summer vacation in St. Paul.

Rebe Pence, Caroline Agiter and Mrs. Agatha Hard Ohliger, are expected among the commencement visitors.

Florida Parsons is enjoying good success with her music in Chicago.

The engagement of Laverne Bishop has been announced to Mr. Lucius Lyman of Akron, O.

BETA NU.

The wedding of Faith Bartram, ex-'03, and Mr. Niles Ford, B @ II, took place at Cincinnati, June 16th.

Margaret Glenn Kauffman, '01, and Mr. John Martin Barringer, Φ Δ Θ, '01, were married in Columbus, on June 18th.

Born, to Mr. and Mrs. William Minshall (nee Rice), on March 29th, a daughter.

Born, to Mr. and Mrs. George Smart (nee Lucy Allen), on June 10th, a daughter.

KAPPA.

Ella Ball, '84, Teacher of Latin and Greek, at Keuka College, N. Y., is to join a party of ten for travel and study in Greece this summer.

Born, to Principal and Mrs. H. S. Myers, (Mae Steele, '95), a daughter.

Claire Sands, '96, has resigned her position at Storer College, Harper's Ferry, W. Va., to accept the chair of Lady Principal at Keuka College, N. Y.

Born, to Mr. and Mrs. Homer Lash (May Gurney, '00), a son.

Mrs. F. R. Miller (Florence Birdsall) is visiting her mother in Hillsdale.

Mrs. S. E. Kelley (Florette Bonney, '95), visited friends in Hillsdale recently.

DELTA.

Born, to Mr. and Mrs. Ellis Hunter (Lila Keyes), a son. Mr. and Mrs. Hunter reside in Indianapolis.

To Mrs. Harry E. Coblentz (Ida Loudon, '91), a son was born on May 26th.

Mrs. Harry Branham, '02, and Mrs. Nichols (Lillian Gillette), '02, visited Delta in May.

XI.

Mrs. Herbert Taylor edits a Methodist Magazine in Kansas City, Mo.

The present address of Mildred Graham-Layman, '92, is 12 Shin Ryerdo Cho, Azabu, Tokio, Japan.

Anna Wilson-Ord, '83-'84, whose husband, Major J. P. Ord, has recently retired from the army, now resides at Chevy Chase, Md.

Lucy Bell Webster-Caldwell, '95, now lives in San Antonio, Texas. Her husband, Mr. Geo. W. Caldwell, is chief engineer for the English Syndicate of Sir Wutman Pearson, who is putting in all the harbor improvements for the Mexican Government.

Maude Conley, '98-'99, was married March 18, 1903, to R. D. Foster, Steubenville, Ohio.

IOTA.

Hallie Landes, '03, has recently been elected to membership in Phi Beta Kappa. We are justly proud of our sister.

Elizabeth Rose, '91, is spending the year traveling and studying in Germany and Italy.

In March we received the announcement of the wedding of Margaret Jean Paterson, '94, to Mr. Charles Allen Eastman, to be at home at 6117 Kimbark Avenue, Chicago.

During the winter Mrs. Ella Adams Moore, '92, edited a book entitled "A Moment Each Day with George Eliot." It is a quotation for every day in the year selected from the works of George Eliot by Mrs. Moore and the students in her class in Literature in the University of Chicago.

Mrs. Minnie Royse Walker, '90, of New York City, recently visited friends and the chapter.

Nellie Landis was married to Mr. Samuel E. Dove, $\Phi \Delta \Theta$, on Wednesday evening the tenth of June, at College Avenue Church, Greencastle, Ind.

Frances M. Wilde will teach in the public schools of Kirkwood, Mo., next year.

BETA LAMBDA.

Evaline Burrill is teaching history in Central High School, Kansas City.

UPSILON.

Harriet Alling will go to San Diego, Cal., in September.

Not long ago, a baby girl was born to Mrs. Kate Alling Thomas of Eaton, Col.

Lucy Shuman, ex-'95, will marry Mr. Masslick of Evanston, in August.

Lola Newcomb will go East after her marriage to Mr. Warren Smith, $X \Psi$, of Chicago University, on July first.

May Capron sent an announcement of her engagement to Robert Hunter, to Upsilon last week. They will be married in August.

Grace Shuman, Ruth Woolson and Zada Miller will be married sisters before fall.

CHICAGO ALUMNAE ASSOCIATION.

Jessie Stillman Bliss, '95, of Upsilon, was married recently to John Symes, and they are at the Greenwood Inn, Evanston, for the summer.

Gertrude Leverett Augur, of Hillsdale, and Lawrence, is a recent recruit to our membership. She is the proud mother of three charming Kappas-to-be, and a bright baby boy.

Martha Moses, '91, Beta Nu, is Secretary of The World Railway Publishing Company, and The American Accounting Company.

Dr. Sarah Hobson of Phi, has come back to our ranks after an enforced absence of many months. She has opened an office at Room 749 Marshall Field Bldg., with hours from 10:30 to 11:30, which makes it possible for her to get to the tea-room in time for our 12 o'clock luncheons. How gladly we welcome her.

Born, to Mrs. Robert N. Holt (Ora Wakeman), a son.

Miss Lillian Little, Epsilon, is studying vocal music with Max Heinrich, Chicago, and is a member of our Chicago A. A.

We have also in our A. A., Mrs. Laura Kelley Pruitt of the class of '80, Iota, Addie Smith, a charter member of Chi, is our President, and the younger women in our Association feel honored in having with them these pioneer Kappas.

Miss Elizabeth Fullenweider, Epsilon, '93, is teaching in our Chicago Schools, as are also Effie Miller, Upsilon, '92, Louise Merrill, Beta Nu, '92, Zaidee Mitchell, Kappa, and Agnes Rogers, Harriet Bisbee and May Livingston of Psi.

Carrie Wright, Beta Nu, is teaching Latin at Armour Institute.

Stella Stearns of Chi, '92, is taking a post-graduate course in English at the University of Chicago.

Grace Crippen and Esther Miller are teaching in the Evanston schools and are to make a tour of the Yellowstone Park this summer.

Nellie Lau Spielman, 614 Orchard St., Naamah Lowe Hutchinson, 542 W. 65th St., and Ida Bonnell Otstott, '91, are Sigma's representatives in our A. A. Mrs. Otstott acted as Toast-mistress at the Annual Banquet of the Nebraska University Club of Chicago, on May 30th.

We are grieved to chronicle the loss of Faerie Bartlett Wilcoxson's baby boy. He died last fall, leaving the home desolate, as he was an only child.

We mourn with Zaidee Mitchell for the loss of her mother. Those of us who knew Mrs. St. Clair appreciate how keenly Zaidee feels her loss.

Bessie King Dalzell of Beta Gamma, will leave our Association in September, to join the Cleveland A. A., as she is to marry Willard Lewis Jared. What is our loss will be Cleveland's gain. Having met Mrs. Smart at Convention in Ann Arbor last summer, we feel that she will have a warm welcome awaiting her among the Kappas in Cleveland. Her sister, Ada Dalzell will be with us so that we shall have news of her from time to time.

Jessie Peck of Syracuse, has a large class of music students, and always remembers the girls of our A. A. with cards for her recitals which are very enjoyable.

CHI.

Dr. Mabel Austin is in Boston studying Pathology.

Leona Pelton, ex-'02, was married on June 4 to Mr. Jas. McD. Campbell of Huron, S. Dak.

Martha Rogers, ex-'97, married to Mr. Jesse Schumann.

Frances Woodbridge, ex-'05, who has been studying music in Brooklyn during the past year is now occupying the position of soprano in the Congregational Church at Duluth, Minn.

THETA.

Laura V. Long is connected with the Civic Improvement League of St. Louis, and is working among the women of the crowded tenement districts for the betterment of their neighborhood.

Mrs. Urima Lawrence sailed June 3d on the steamer Koptic from San Francisco for Manila. After visiting Japan and China, she will join friends and spend a year in Europe.

Susie Alexander was married on June 11th to Mr. Guy Atwood Thompson of St. Louis. The wedding occurred in Lexington, Mo.

SIGMA.

Mrs. Charles Rodgers has the sympathy of her Kappa sisters. Her husband died last fall and she has gone to make her home in Salem, Ohio. R. F. D. No. 1.

Alice Maitland is completing a course in trained nursing at the Baptist Hospital in Chicago.

Mrs. Adella Stratton Scott and family have gone to Weiser, Idaho, to make their future home.

Adelloyd Whiting was married to Mr. Fred C. Williams, B @ II, of Seward, Nebraska, in June. Our Grand President Mrs. May Whiting Westermann, was matron of honor and all the Kappas and Betas of Lincoln chapters were present at the reception. Kappa spoons and forks formed the sorority's gift. Mr. and Mrs. Williams will be at home in Seward after September 1st.

BETA BETA.

Married, Wednesday evening, June tenth, Adelloyd Whiting, '00, to Mr. Fred C. Williams, B @ II. Mr. and Mrs. Williams will reside in Seward, Neb., where Mr. Williams is Superintendent of Schools.

Alice Grace will spend most of the summer in Santa Monica, Cal.

Sigma was fortunate in having as her guests at the annual banquet, Miss Frances Emerson of Beta Tau chapter and Miss Marie Morris of Omega. Misses Nell La Selle, Tynel Bradt, Constance Sarbach and Emily Jenkins, are Sigma girls who were present also.

Mrs. May Whiting Westermann, our Grand President, came to Lincoln from St. Louis on June second, to attend the wedding of her sister, Adelloyd Whiting.

Miss Blanche Edminston has returned from an extended trip through the East. She reports pleasant visits with Psi, Beta Alpha, and Upsilon chapters.

OMEGA.

Maude Nichols, '96, was married on New Years' Eve., to Mr. W. A. Mitchell, of Columbus, Kansas.

Born, to Professor and Mrs. Higgins, in October, twins—Donald and Dorothy. Mrs. Higgins was formerly Ella Marie Anderson, '98.

Maude Landis is now Superintendent of Scarritt's Hospital, the largest hospital in Kansas City.

Edith Scholey leaves in July for a year abroad.

Mrs. Chapman (nee Johnson), who was until recently Missionary in Ecuador, S. A., sent by the Gospel Mission, has a Kappa baby, born just after landing in New York.

Mrs. Lloyd Miller and Mrs. F. M. Benedict, both charter members visited us in May.

Miss Carolyn Armsby, '02, is visiting in Lawrence at the chapter house.

PI.

Mary Bell has been, since graduation, Graduate Editor of the "Californian" and Assistant Editor of the "Overland" Magazine, and is the author of numerous short stories.

Ethel Catton will teach History and Latin in Oakland, Cal., this fall.

Edna Wemple will be a member of the Geological and Paleontological expedition which is to be carried on under the leadership of Dr. Merriam of the Geological Department.

Georgia Carden will teach this fall in the High School at Chico, Cal.

Grace Dibble will teach Latin at Niles, Cal.

Elise Wenzelburger (Granpner), was married in April, 1903.

Mrs. Ethelynd McClymonds (Kensel), who was married last February, lives in San Leandro, Cal.

Neal McKinne will teach in San Rafael this fall, but expects to go abroad after Christmas.

Mrs. Ruth Rising (Memcanti) and little daughter, are living in Rome, Italy.

Eva Powell will go to Europe in June for six months' travel.

Alice Rising has returned from Europe after an absence of two years.

Minnie Sullivan is a very busy trained nurse.

Sadie Alexander is going to the Hawaiian Islands for several months.

On Wednesday, April 22d, Elise Wenzelburger was married to Mr. Adolph Granpner. Mr. and Mrs. Granpner will make their home in San Francisco.

On May fifth, Mabel Ruch was married to Mr. Robinson in Oakland, where they will make their future home.

Alma Sherman was married, May 19th, to Mr. Allen Chickering, at the First Congregational Church, Oakland. They will reside in Oakland.



Alumnae Department

Bloomington Alumnae Association.

The Bloomington, Indiana, Alumnae Association was recently organized with Mrs. L. Van Buskirk as secretary. This, with the new organizations at Lincoln, Nebraska, and Syracuse, N. Y., brings up the number of Alumnae Associations to twenty-two.



Lincoln Alumnae Association.

This letter is to be an introduction to our Kappa sisters as an Alumnae Association. Although our Alumnae in the city have met in informal gatherings for over a year, and have often talked of forming a regular Alumnae Association, we have delayed it from time to time, and took our final step only last month. The active chapter has been so generous in inviting the older girls to initiations and their gatherings, that it is hard for some of us to realize that we are not actively concerned in the fraternity, or that we had need of binding ourselves together in Alumnae Associations.

We deem ourselves fortunate in having in our midst one of our charter members, Mrs. Cora Fisher Warner, who is our president. We are glad to say that we have twenty-four members, which is the largest part of our resident Alumnae. Our list will probably be larger in the near future, as some who have always met with us are now out of the city.

Our plans for meetings are as yet indefinite. As a large number of us will stay in Lincoln for the summer, we will meet about once a month in picnic or some other summer diversions. Next year we hope to take up some regular form of work.

STELLA BLAINE KIRKER.

PARTHENON

Types.

When a new girl is brought up for consideration, one so often hears the Frat. girl say, "Oh we don't want her, she isn't our style." With that the subject is dismissed, the other girls do not get acquainted with her, and a strong girl is often lost to the fraternity.

I sometimes wonder if it would not be better if she were not always "just our style." Would it not broaden our views, strengthen our forces, and increase our helpfulness to those around us if we did not limit ourselves to just one style?

"Will not," some one urges, "we want to have a little bit of individuality? We want people to be able to guess when they see a girl that she belongs to our chapter."

Individuality, of course, is a good thing to have, but not individuality to the point of narrowness. Would it not be better to have people feel that *every* girl whose character is strong and whose work and influence are good might well be a member of our fraternity?

LEE BROWN, *Beta Mu.*

"Knocking."

If I were to take a text for this little sermon on knocking I should say "Don't talk in haste and repent at leisure," for that, it seems to me, is the root of the matter from whence the "unkind word society" sprang into existence. It is only because we do not take time to think in this *too* busy world, but are careless and hasty in drawing our conclusions, that our conversations are so full of mean and uncalled-for "digs," which, if they are repeated—and they surely will be—will hurt some one.

The college girl in particular is to be censured for this fault. Because she sees so much of her fellow students, that for a lack of other material, when her conversational store has run low, she is apt to resort to this form of small talk, in which her little hatchet, which hacks out small bits of reputation, plays so large a part and leaves such irreparable ruin behind.

It is the little witty remark at some one's else expense that sticks in the mind at the end of a conversation, and it is the bit of gossip concerning some friend that is most sure to be repeated again and again around a college circle until it reaches the ears of the "friend" and the circle is broken.

The fraternity girl, however, has no excuse for this sort of unkindness. Her college life from the day she pledged ought to have broken her of this pernicious habit. When the girl entered the fraternity she made fifteen or twenty new friends, all of whom were girls as essentially human, as full of faults as herself, but—it was not in her heart to mercilessly criticise or make fun of these friends to an outsider, or to one of the other girls, but to help each one to overcome her weaknesses, correct her mistakes and help her over the hard places. She learned to penetrate into the depths of a girl's character and find a motive for her actions, a reason for her failures, there, with her whole soul in the struggle, seek to make the motive the best and the noblest and turn these same failures into laurel crowned successes.

Why then, when a fraternity girl is going through this helpful training within her fraternity, should she not apply this same examination process to the actions of others, before she condemns them with a hasty word? Higher education, you know, is only necessary to help and make easier the practical application of it.

O! if girls only realized how far an unkind remark travels, how wide it spreads its harm, it would die of very shame ere it was uttered.

Why must we men and women, because we live in a grand free country, abuse the blessings of such an existence by using this liberty of speech, thought and writing, heedlessly to wound others?

Dear Kappas, from the East, from the West, from the South, from the North, don't knock!

Chi.

A Kappa
All Year
Round.

It is easy, of course, to be an enthusiastic and loyal Kappa during the school year; in some way the interest always comes when Kappas get together, and we have become accustomed to take the fealty for granted and never question how deep it is.

But after we have left college for vacation, after the college duties and pleasures are over, don't you think that then is the time when we can show enthusiasm most effectively? Then we can plan rushing parties and the dozen little affairs that are usually arranged upon a moment's notice, we can strengthen the more feeble loyalty of our "baby" Kappas; we can pick out from among our own friends, the available girls of Kappa type and interest them in our college affairs, and so save the most difficult part of rushing.

In doing these little things we will keep our own zeal from flagging and at the beginning of the next year we will be surprised to find how little adjustment will be necessary for the rounds of the busy rushing season.

Suppose we try, especially we who live away from Kappa influence, try being a Kappa the whole year through.

LEOTA DOCKERY, *Theta*.

**Is Life in the
Chapter House
Narrowing?**

"To live in a fraternity house is the most narrowing thing in the world," one so often hears said. "They are so shut in from outside girls, and only live and think as their devoted fraternity sisters do." Is it more so than if they were in a boarding-house, where they know intimately, perhaps, only their room-mates? On the contrary, the girl living in the chapter house learns to know and love each trait of fifteen or twenty girls. Some peculiar mannerism, which a girl has and for this reason may be repulsive, when you see her every day under all circumstances, all these trivial things are forgotten and you find out only the lovable characteristics; for of course she must have them if she is your Kappa sister. If you know these girls thoroughly and grow to understand them, why should you want to take into your heart the whole University? Of course, this does not mean that one can see no good or nothing attractive in a girl, if she should happen not to wear the little golden key. But are not some friends always dearer than others? If we live with them constantly, each one so different and having such widely-differing interests, would not we become more like the different ones and their interests and pleasures becomes ours? And thus we know and hear of different branches of work and study, which in our busy life we would

perhaps not have time to dig out for ourselves, but which we unconsciously absorb, because those with whom, we are daily associated are so intensely interested in their work, the atmosphere around them is saturated with their new discoveries in their particular branches, and we are made to share their pleasures. Some might say that in this same manner we would gather new ideas in our boarding-houses, it may be true in some boarding-houses where the inmates are very congenial, but too often it is "Chacun pour soi au diable le dernier." Toleration for other girls likes and dislikes broadens a girl's character more than any other trait. This spirit, which is sadly lacking in our dear old world, is fully developed. Our opinions, which seem so vast and grand may not coincide with those of the sweetest girl in the world, therefore we begin to think perhaps there may be another way of looking at the matter, and when such things are daily, hourly brought before our minds, gradually we are forced to become more lenient in our judgments, and conclude that affairs are not bound up in such cast iron rules after all. There is no greater pleasure than to meet some one, whom we might call fair minded—just in her decisions. They give us a sense of strength and power, which a narrow minded and ranting person totally lacks. Of course, since we are all human beings, we are very sensitive to our environments, they should be carefully selected, be sure that you admire the qualities of your friends, as well as love them, for unconsciously you absorb even their characteristic expressions. These little things, mere ripples on the surface, as it were, are carried to the many homes of these gay and thoughtless, but none the less charming girls, and they may in their turn affect some member of their family, and thus the influence spreads in ever widening circles.

Tempers and wild bursts of ill humour are quickly laughed out of countenance or that girl is promptly made to understand that each one has the same rights and privileges that she has, therefore it is not to be tolerated. Otherwise, where people are not interested in the tantrums of that disagreeable girl, she is left alone with a contemptuous shrug and nobody cares, whether she is angry or as happy as the day is long. Her sisters who are interested in her development, tell her about her fault and she soon can master her bursts of feeling.

Of course fraternity life is not an ideal one, but to develop a more lovable disposition it is even better than the family life, because too often there is a spirit of favoritism, which may mar her attempts to be nicer, but realizing that her attractiveness depends upon her own efforts, and if ever she stands upon her own merit, she will try her utmost to be interesting, lovable and entertaining.

We may not all reach the goal toward which we are striving, but in our efforts we trust we may develop into the noble, broad minded women, of which, each one desires so earnestly to become.

Beta Lambda,

ANNA D. WHITE, *Magister,*

HELEN STOOKEY, *Cor. Sec.*



Public Annual Reports.

ALPHA PROVINCE.

PHI—UNIVERSITY OF BOSTON.

Active Members.

Florence Bryant Colby, '03,	Hellen May Wright, '05,
Alice Crane, '03,	Emma Latimer Fall, '06,
Eva Doraine Phillips, '03,	Mary Pifer, '06,
Ellen Stevenson, '03,	Ethel Rich, '06,
Gertrude Sarah Butterworth, '04,	Maude Simes, '06,
Ruth Russell Jennison, '04, *	Emily Francesca Skerry, '06,
Elsie Vose Tucker, '04,	Lottie Tirrell, '06,
Mary Grace Nelson, '05,	Eliza Twombly, '06.

Chapter:—Active members, 16; total number of members since founding of chapter, 170; number of year's initiates, 7. Honors conferred by faculty: Eva Doraine Phillips, Phi Beta Kappa; E. Francesca Skerry, membership in Historical club. Honors conferred by students: Alice Crane, president of Philomathean society; Eva Doraine Phillips, class poet and literary editor of *Beacon*.

University:—Number of faculty in collegiate department, 32; number of students in collegiate department, 477; number of women in collegiate department, 303. Fraternities in order of founding, with number of active members in each: Beta Theta Pi, 28; Theta Delta Chi, 34; Kappa Kappa Gamma, 16; Alpha Phi, 23; Gamma Phi Beta, 23; Delta Delta Delta, 26; Pi Beta Phi, 17. Chapter rooms, 14 Ashburton Place.

These last days of the college year are very busy ones for Phi, and we have had hardly time to realize how we shall miss our four loyal Kappa seniors.

Phi has an unusually pleasant event to record—a visit from a member of the Grand Council. Miss Griffith, our Grand Secretary, was with us on Saturday, April 25th, and the annual banquet, which usually comes in May, was held that evening in her honor. About thirty Kappas, active and alumnae, and Miss Mosher of Kappa chapter, were present at the Hotel Vendome. Miss Alice Quinn, '02, was toastmistress, and Miss Griffith gracefully responded to the toast, "The Length and Breadth of Kappa."

On May 22nd the Alumnae Association entertained the active members at the chapter rooms. And soon will come the farewell spread to the seniors, and after commencement the picnic at Marblehead, one long day together before we go our different ways for the summer.



BETA EPSILON—BARNARD COLLEGE.

Active Members.

Dorothy Canfield, P. G.,	Caroline Lexow, '04,
Janet Alexander McCook, P. G.,	Margaret Holmes Stone, '04,
Evelyn Osborn, P. G.,	Alice Olin Draper, '05,
Ethel Manter Pool, '03,	Emilie Josephine Hutchinson, '05,
Katherine Ellen Poole, '03,	Florence Alma Meyer, '05,
Madeleine Dayrell Skinner, '03,	Anna Campbell Reiley, '05,
Bessie Ilsley Thompson, '03,	Alice Haskell, '06,
Katharine Swift Doty, '04,	Lucie Mayo-Smith, '06,
Jean Dunbar Egleston, '04,	Anna May Newland, '06,
Helena Marshall Fischer, '04,	Josephine Paddock, '06,
Nathalie Henderson, Sp.	

Chapter:—Active members, 21; total number of members since founding of chapter, 79; number of year's initiates, 5. Honors conferred by faculty: Phi Beta Kappa, Elizabeth Allen. Honors conferred by students: Emilie J. Hutchinson, president of 1905; May Newland, president of 1906; Jean Egleston, vice president of 1904; Jean Egleston, vice president of athletic association; Kate Doty, business manager of 1904 *Mortarboard*; Ethel Pool, vice president of undergraduate association; Ethel Pool, chairman of undergraduate play committee.

College:—Number of faculty in collegiate department, 51 (also 31 Columbia University instructors, whose courses are open to Barnard students); number of students in collegiate department, 330; number of women in collegiate department, 330. Fraternities in order of establishment, with number of active members in each: Kappa Kappa Gamma, 21; Alpha Omicron Pi, 18; Kappa Alpha Theta, 19; Gamma Phi Beta, 18; Alpha Phi, 10. Chapter house or room, apartment in "The Lowell," 501 West 120th St.; rented.

Our initiation marks the beginning of the events that have transpired since our last chapter letter, and we take great pride and pleasure in our new Kappas—Alice Haskell, Lucie Mayo-Smith, Anna May Newland and Josephine Paddock.

On the second of May we had a very pleasant visit from Miss Griffith and Miss Scattergood. The Beta Epsilon alumnae association held a meeting at the apartment the same afternoon, and

thus many of the graduates as well as the active members enjoyed the opportunity of meeting the Grand Secretary and her deputy.

The fraternity life in the apartment has been moving along in its usual pleasant way. On another page of the KEY you will find an account of how we spend our time and will understand how we hope to continue our stay there next year. Commencement takes four away from the active life of the chapter, and we are very reluctant to see them go. On Monday, June first, we gave an informal reception to Mu chapter of Alpha Phi, which has recently been established at Barnard.

Last March the college received the very generous gift of a large tract of land from Mrs. A. A. Anderson, the vice chairman of the Board of Trustees. This land is situated just opposite the main entrance to Barnard and is a most desirable location. We hope now to have soon our much longed for and needed gymnasium and dormitory. To express our appreciation of the gift we devoted part of a day to enthusiastic celebration and voted to mark that day for special observance in future years.

Beta Epsilon sends best wishes to all sister chapters.



PSI—CORNELL UNIVERSITY.

Active Members.

Olive Butler Morrison, '03,	Elizabeth Manister Worts, '05,
Carrie Van Patten Young, '03	Mabel Scott, '05,
Beatrice Azalea Gibson, '04,	Blanch Seelye, '05,
Gladys Miller, '04,	Margaret Loomis Stecker, '06,
Katherine Alexander, '04,	Charlotte Holmes Crawford, '06,
Mary Merritt Crawford, '04,	Edna Frances Huestis, '06,
Laura Katherine Smutz, F.P., '04,	Marian McDermott, '06,
Nora Staunton Blatch, '05,	Margaret Rolston, '06,
Helen Adelaide Ellsworth, Sp.	

Chapter:—Active members, 17; total number of members since founding of chapter, 128; number of year's initiates, 6. Honors conferred by students: O. B. Morrison, '03, class essayist; C. V. P. Young, '03, president of Sage student government association, class book committee; M. M. Crawford, '04, *Cornelian* board, class book committee, A. E. I., medical fraternity.

College:—Number of faculty in collegiate department, 421; number of students in collegiate department, 2,968; number of women in collegiate department, 321. Separate lists of men's and women's fraternities in order of establishment with number of active members in each: Men's—Zeta Psi, 23; Chi Phi, 22; Kappa Alpha, 21; Alpha Delta Phi, 30; Phi Kappa Psi, 27;

Chi Psi, 29; Delta Upsilon, 27; Delta Kappa Upsilon, 29; Theta Delta Chi, 27; Phi Delta Theta, 37; Beta Theta Pi, 28; Psi Upsilon, 33; Alpha Tau Omega, 26; Phi Gamma Delta, 34; Phi Delta Phi, 15; Phi Sigma Kappa, 30; Delta Tau Delta, 23; Sigma Phi, 22; Sigma Chi, 29; Delta Chi, 23; Sigma Alpha Epsilon, 36; Delta Phi, 18; Kappa Sigma, 28; Nu Sigma Nu, 27; Gamma Alpha, 27; Sigma Nu, 22; Phi Alpha Sigma, 18 (N. Y. Medical College); Alpha Kappa Kappa, 19 (N. Y. Medical College); Omega Upsilon Phi, 32 (Medical). Women's—Kappa Alpha Theta, 19; Kappa Kappa Gamma, 17; Delta Gamma, 16; Alpha Phi, 19; Alpha Epsilon Iota, 12 (Medical).

Once more Psi's chapter roll is nearly complete with members present at college, as all but three have returned after the typhoid fever epidemic. Two of our girls were stricken with the fever but we are happy to say, both have fully recovered and are with us again, one for work and the other on a short visit.

Since our last letter we have had several very pleasant evenings together, at some kind of a party. The chapter was entertained at dinner by one of our town girls, there has been a birthday party, the juniors and sophomores in the chapter have entertained us by different "stunts," and we spent one very pleasant evening with some of our alumnae. Thus has sped away the time.

May tenth saw the completion of a plan cherished for nearly a year. Ever since a year ago, when our beloved sister, Gordon Fernow was taken from us, we have wanted to give some fitting memorial of our love, and we finally decided, that to this end, we would carry out a plan long entertained by her—that of giving to the girls in the university, a row-boat for their exclusive use on Beebe lake, where the girls' crews row. On May tenth the boat was dedicated, with short, but impressive services, and since then we have all taken great pleasure in seeing the college girls enjoying the use of it. The boat itself is a very handsome one, of Spanish cedar, made at Sayles, the Cornell boat builders, and is absolutely safe.

Psi has entertained its friends but little this year on account of the pressure of work after the fever epidemic, but one pleasant afternoon was spent at a tea given in the Sage drawing rooms, to about a hundred of our alumnae and friends in town.

And so, after all, when the terrible conditions of part of the year here at Cornell are considered, we have spent a very pleasant term, among ourselves, and these pleasures, mingled with those which constantly arise from outside sources, have sped on, all too quickly, the time for breaking up and saying good-bye.

BETA TAU—SYRACUSE UNIVERSITY.

Active Members.

Florence Knapp, '03,	Anna Teefer, '04,
Flora Metcalf, '03,	Blanche Allen, '05,
Mary Peaslee, '03,	Alice Colvin, '05,
Marion Sturdevant, '03,	Cecile Colvin, '05,
Helen Allis, '04,	Clara MacFarlane, '05,
Faith Coon, '04,	Faith Davis, '06,
Caroline Kenyon, '04,	Grace Henderson, '06,
Lucile Love, '04,	Ruth Henderson, '06,
Bessie Scott, '04,	Frances Thayer, '06,
Gertrude Sholes, '04,	Olive Wholahan, '06.

Chapter.—Active members, 20; total number of members since founding of chapter, 188; number of year's initiates, 6. Honors conferred by faculty: Jessie Knapp, Magna Cum Laude; Mary Preston, Magna Cum Laude; Eva Richardson, Magna Cum Laude; Ruth Voorhees, Magna Cum Laude; Gertrude Gardner, Cum Laude. Honors conferred by students: Flora Metcalf, senior fraternity; Marion Sturdevant, senior fraternity; Daysey Best (ex '05) Onondagan board.

College.—Number of faculty in collegiate department, 87; number of students in collegiate department, 2,009; number of women in collegiate department, 900. Fraternities in order of establishment with active membership of each: Men's—Delta Kappa Epsilon, 32; Delta Upsilon, 29; Psi Upsilon, 30; Phi Kappa Psi, 28; Phi Delta Theta, 36; Beta Theta Pi, 37; Chi Alpha Sigma (local), 12; Phi Gamma Delta, 31; Nu Sigma Nu, 27; Alpha Kappa Kappa, 33; Phi Delta Phi, 14; Delta Chi, 21. Women's—Alpha Phi, 28; Gamma Phi Beta, 35; Kappa Kappa Gamma, 19; Kappa Alpha Theta, 25; Pi Beta Phi, 25; Delta Delta Delta, 28; Delta Gamma, 12; Phi Mu Epsilon, (?)

Only a few more days and we will separate for the summer, but before the year closes Beta Tau is very glad to introduce to the Kappa world two new girls, Faith Davis and Ruth Henderson, who were initiated March the twentieth.

About two weeks ago, Mrs. Wallace, who is one of our charter members, had the girls and our chaperone, Miss Fuller, down at her home for a good time. Miss Fuller is to leave this June; she has been with us for three years now, and the girls have learned to respect and love her dearly.

We have entertained several of the men's fraternities at the chapter house within the last few weeks; the plan of entertaining one chapter at a time, we find better than having men of different fraternities at the same party.

Phi Kappa Psi held their province convention at Syracuse during the Easter vacation.

A chapter of Phi Mu Epsilon, a musical fraternity, was established here in March, and early in April the girls gave a large reception to the upper classmen of the university. The Alpha chapter is at De Pauw University.

Athletics have flourished this spring, our base ball team having been especially successful.

An unknown friend has made a gift of \$5,000 to the university recently and we are to have another large dormitory, which is to be built during the summer. It will be called Haven Hall, after a former chancellor.

Our annual banquet is to be held at the chapter house the evening of June fifth. We have a strong alumnae association in the city and we always look forward to the alumnae banquet as one of the pleasantest affairs of the year.

Beta Tau sends heartiest greeting to all Kappas, and best wishes for a pleasant summer.



BETA ALPHA—UNIVERSITY OF PENNSYLVANIA.

Active Members.

Lucy Manber, '03,	Josephine L. Reed, '05,
Helen M. Euston, '03,	Emma L. Burk, '04,
Margaretta Atkinson, '03,	C. Edna Bramble, '05,
Ida B. Hill, '03,	Ida May Solly, '05,
Martha W. Emerson, '04,	Marion R. Lape, '06,
Alice Davison (first year in graduate department);	
Ph. D. (probably), 1906.	

Chapter:—Active members, 11; total number of members since founding of chapter, 59; number of year's initiates, 5. Honors conferred by faculty: Lucy Manber, second prize for preparations illustrating the embryology of an animal; Alice Davidson, Bennett fellowship in chemistry. Honors conferred by students: Helen Euston, president of college branch of high and normal school alumni association.

College:—Number of faculty in collegiate department, 114; number of students in collegiate department, 1,113; number of women in collegiate department, 245—53 regular and 192 partial students. Separate lists of men's and women's fraternities in order of establishment with number of active members in each: Men's—Phi Beta Kappa, 9; Sigma Xi, 37; Delta Phi, 20; Phi Kappa Sigma, 15; Zeta Psi, 20; Delta Psi, 34; Phi Kappa Psi, 27; Beta Theta Pi (1839), 28; Phi Gamma Delta, 26; Phi Delta Theta, 26; Delta

Upsilon, 31; Psi Upsilon, 28; Alpha Tau Omega (1865), 16; Kappa Sigma (1867), 20; Delta Tau Delta, 25; Delta Kappa Epsilon, 21; Phi Sigma Kappa, 21; Sigma Alpha Epsilon, 29; Phi Alpha Sigma, 38; Nu Sigma Nu (medical) 25; Alpha Mu Pi Omega, 22; Mu Phi Alpha (engineering, 1895), 38; Xi Psi Phi, 30; Psi Omega, 32; Sigma Chi, 19. Women's—Kappa Kappa Gamma, 11. Chapter room at 217 De Kalb Square, Philadelphia, Pa.; rented.

Since Beta Alpha last sent her greetings to all in Kappa Kappa Gamma, we have had a very enjoyable and busy term. Then "mid-years" were just over, now "finals" are at hand. We all miss our secretary, Freda Craig, very much, but our loss has been Beta Iota's gain, for she has left "Old Penn" for Swarthmore. Still, we have not lost her entirely, for occasionally we meet her in our Kappa room on Friday evenings.

On April 18th Beta Alpha entertained the girls of Beta Iota and we, at least, enjoyed the visit of our neighboring sisters. The Philadelphia alumnae association invited us to its annual banquet in February, and several of us had the pleasure of meeting, not only the alumnae of Beta Alpha, but also Kappas from Beta Iota, Psi Chi, Sigma and Omega.

Miss Griffith, our Grand Secretary, has attended several of our meetings lately, and, of course, we feel very glad that we are in a position to be so honored. We had the pleasure of entertaining, on May 8, together with a few of our alumnae, Mrs. Lyman from Lambda.

Adeline Jacobs, '02, entertained Beta Alpha and a few other Kappas, among whom were Miss Griffith and her deputy, Miss Scattergood, on Tuesday evening, May 19, at her home. We all spent a very delightful evening.

On Saturday afternoon, May 23, a very happy crowd of Beta Alpha girls met on one of the steamboats which travel between Philadelphia and Bristol. We were the guests of Ida Hill. The afternoon was glorious, and the Delaware was beautiful, but we could not prevent the feeling of sadness, that college is nearly over, and with commencement we lose our dear seniors. Lucy Manter, Helen Euston, Margaretta Atkinson and Ida Hill all leave us. We who are left feel almost lost when we realize that next Friday evening is our last meeting in our Kappa room.

Of course we will meet socially at the homes of the girls several times before June is over, but the delightful hours together in our room will soon be a memory of the past for some of us.

Beta Alpha sends to every Kappa the very best wishes for a happy vacation.

BETA IOTA—SWARTHMORE COLLEGE.

Active Members.

Inez Helen Lord, '03,	Helen E. Miller, '05,
Lulu von Ramdohr, '03,	Freda Craig, '05,
Hallie G. Hulburt, '03,	Margaret D. Leiper, '05,
Mary Louise Bartlett, '04,	Elizabeth Hall, '05,
Agnes H. Sibbald, '04,	Marie de Montalvo, '05,
Margaret Craig, '05,	Mabel Cheyney, '06,
Lidie McFarland, '05.	

Chapter :—Active members, 13 ; total number of members since founding chapter, 53 ; number of year's initiates, 2. Honors conferred by students : Inez Lord, class day prophetess ; Lulu von Ramdohr, class day historian ; Lulu von Ramdohr, member of *Phoenix* staff ; Marie de Montalvo, member of *Phoenix* staff ; Marie de Montalvo, member of *Halcyon* staff ; Elizabeth Hall, member of *Halcyon* staff.

College :—Number of faculty in collegiate department, 28 ; number of students in collegiate department, 209 ; number of women in collegiate department, 112. Separate lists of men's and women's fraternities in order of establishment with number of active members in each : Men's—Kappa Sigma, 13 ; Phi Kappa Psi, 11 ; Delta Upsilon, 18. Women's—Kappa Alpha Theta, 12 ; Pi Beta Phi, 12 ; Kappa Kappa Gamma, 13.

To Beta Iota this is doubtless the happiest time of the whole year for it is in the spring that every one at Swarthmore begins to throw aside care and restraint and once more we feel free to enjoy ourselves. Of late we have had several picnics and suppers in the woods, and also have spent many delightful afternoons together at the homes of our day students.

The most important event since our last letter was the ninth annual banquet, which was held at the Hotel Bellevue, Philadelphia, on March 21. Laura Miller Curry, '96, made an ideal symposiarch, and the toasts responded to were as follows :

Address of Welcome,	LULU VON RAMDOHR, '03
The Atlantic and the Pacific—may they never meet,	INEZ LORD, '03
A Kappa Propensity,	MARY (HAYES) GAWTHROP, '93
Almost a Catastrophe,	LIDIE W. MCFARLAND, '05
"There's many a slip."	
The Man Without,	JENNIE COKER, '99
"Jehave the Fair,"	MARGARET LEIPER, '05
"God's noblest thing, a woman perfected."	
The Woods and Fields of Swarthmore,	HELEN D. WALKER, '01
"Comin' Thro' the Rye,"	J. ETHEL THOMPSON, '99
"But all the lads, they smile at me."	
The Wide, Wide World,	ETHEL BEARDSLEY, '02
Golden Days,	FANNIE (CHEAIRS) MANNING, '95

On the evening before the banquet, Mabel Cheyney was initiated at the home of Ethel Beardsley, and at the same time we had the pleasure of affiliating Freda Craig of Beta Alpha. This year we have had several visits from our Beta Alpha sisters, and also spent a delightful afternoon with them at their new chapter rooms in Philadelphia.

Among our other visitors was Elizabeth Allen of Beta Epsilon. At present Miss Allen is taking graduate work at Bryn Mawr College.

Once again our regular college work for the year is finished, but we still have one more week to look forward to, namely, examination week. And then, after that is over, the delightful prospect of our house party, where we all will be happy and gay together before parting.

To the chapters, one and all, Beta Iota sends heartiest wishes for a happy summer.



GAMMA RHO—ALLEGHENY COLLEGE.

Active Members.

Marguerite McClintock, P. G.,	Eva Hart, '05,
Ada Palm, '03,	Agnes Espy, '05,
Erma Rogers, '03,	Mabel Appleby, '05,
Evangeline Parsons, '03,	Elsie Ball, '05,
Mary Heydrick, '03,	Phylinda Gaston, '06,
Florence Stene, '03,	Harriet Hampson, '06,
Clara Miner, '03,	Eleanor Hall, Sp.,
Sarah Breene, '04,	Lee Snork, Sp.,
Helen McClintock, '04,	Ethel Gaston, Sp.

Chapter :—Number of active members, 18 ; total number of members since founding of chapter, 99 ; number of year's initiates, 4. Honors conferred by faculty : Ada Palm, '03, first honors ; Dema Bard, '02, P. B. K. ; Erma Rogers, '03, toast at annual college dinner. Honors conferred by students : Erma Rogers, '03, salutatory, campus board, *Literary Monthly* board ; Evangeline Parsons, '03, declaimer ; Sarah Breene, '04, secretary of junior class.

College :—Number of faculty in collegiate department, 16 ; number of students in collegiate department, 223 ; number of women in collegiate department, 71. Separate lists of men's and women's fraternities in order of establishment with number of active members in each : Men's—Phi Kappa Psi, 13 ; Phi Gamma Delta, 21 ; Phi Delta Theta, 19 ; Sigma Alpha Epsilon, 14 ; Delta Tau Delta, 12. Women's—Kappa Alpha Theta, 15 ; Kappa Kappa Gamma, 18 ; Alpha Chi Omega, 8 (3 in college department).

The members of Gamma Rho have been very busy during the spring term. Several social events in connection with the college have taken place. Each class has had its own jollification, and last week the juniors and seniors, after their three years of strife, "smoked the pipe of peace."

The annual Pan Hellenic banquet was held May 8th at Saegertown, a small place about six miles from Meadville, noted for its mineral springs. After a delightful trolley ride a sumptuous banquet was served to us at the Saegertown Inn. The fraternities represented were Kappa Alpha Theta, Kappa Kappa Gamma, and Alpha Chi Omega. Boundary lines were broken for the time; we all realized what Pan Hellenism means, and enjoyed the time we spent together most heartily.

We consider it quite an honor and privilege to have had at our college this term sixteen of the Bishops of the Methodist Church. Several lectures were delivered by them, which were much appreciated by all who were fortunate enough to hear them.

We send our greetings to all Kappas and wish them all happy vacations.



BETA PROVINCE.

LAMBDA—BUCHTEL COLLEGE.

Active Members.

Ethel Grace Jefferson, '03,	Charlotte Harriet Olin, '04,
Gladys Parshall, '03,	Bertha Rene Widdecombe, '04,
Louise Von Horix, '03,	Margaret Edith Auble, '05,
Ada Vivian Starkweather, '03,	Elizabeth Voris, '05,
Emily Sarah Dawson, '04,	Clara Florine Brouse, '06,
Katharine Kent Huggins, '04,	Ruth Carnahan, '06,
Amy Lillian Saunders, '06.	

Chapter:—Number of active members, 13; total number of members since founding of chapter, 148; number of year's initiates, 3. Honors conferred by faculty: Louise Horix, senior scholarship; Ada Starkweather, first place in senior Ashton prize speaking contest; Elizabeth Voris, tied for first place in sophomore Ashton prize speaking contest. Honors conferred by students: Ada Starkweather, secretary of W. A. A., member of senior promenade committee, member of dramatic club; Louise Horix, president of W. A. A.; college representative at tree-day banquet; Ethel Jefferson, member of general committee for tree-day; Charlotte Olin, secretary of junior class; member of the

dramatic club; Amy Saunders, secretary of freshman class; Clara Brouse, Ruth Carnahan, members of dramatic club; Elizabeth Voris, secretary of sophomore class, captain of the girl's college basket ball team, member of dramatic club.

College:—Number of faculty in collegiate department, 9; number of students in collegiate department, 82; number of women in collegiate department, 42. Separate lists of men's and women's fraternities in order of establishment with number of active members in each: Men's—Lone Star, 12; Zeta Alpha Eta, 11. Women's—Kappa Kappa Gamma, 13; Delta Gamma, 9.

Of all the beautiful pictures
That hang on memories' wall,
The one of the dear old room and girls
Seemeth the best of all.

We have been fortunate in having received several pictures and pieces of bric-a-brac with which to adorn our rooms, and are especially delighted with an elaborately embroidered scarf, the gift of Miss Bess Fisher (ex-'99).

The informal spreads, given bi-weekly, have proven a source of great enjoyment and by means of one of these we entertained Prof. Maria Parsons of the English department.

With the termination of next month comes the severing of ties and we will have to say farewell to four of our active members, Gladys Parshal, Ethel Jefferson, Ada Starkweather, and Louise Horix.

"Tree Day" at Buchtel belongs exclusively to the students, and at no time in the year is such college and class spirit manifested. The afternoon of May 15th was devoted to exercises in which all classes participated and the evening was celebrated with a banquet where good spirits reigned supreme. Louise Horix ('03) responded to a toast in which she represented the college in a very creditable manner.

The inter-state oratorical contest was held in Cleveland on May first, and a delegation of thirty went from Buchtel only to see Wisconsin carry off first place.

On the evening of Friday, May twenty-second, the Eta chapter of Delta Gamma fraternity entertained the other fraternities of the college at cards, and proved themselves admirable hostesses.

We intend to make the best possible use of what little time remains, and it is thought that during the coming month many informal affairs will be given.

BETA GAMMA—WOOSTER UNIVERSITY.

(No report.)

We have all been very busy with the usual spring round of events—literary and social. We have given no big term party, but on May 16th, at Natalie Browne's home, we gave an informal porch party in honor of our twenty-sixth birthday. It was a most successful and enjoyable occasion.

Jean Good is to be graduated from the Conservatory of Music this year. Her recital in June was a complete success, and we were proud to claim her as one of us. She will be with us two more years in order to be graduated from the collegiate department.

Rev. Mr. Axtell and family are making arrangements to spend the summer in Wooster. His two daughters, Winifred, '00, and Clementine, '02, will make welcome additions to the Wooster alumnae association, now strong and active.

Our new room is fast nearing completion. The furniture has been ordered and we are expecting it every day. We hope to have it all finished by commencement week, that we may welcome our visiting alumnae in one of the prettiest sorority rooms in the country.

Our number is soon to be increased, and as we lose but one girl we should begin next year with a chapter quite as flourishing as the fall has found us for many years. The past year has been a happy and prosperous one for us, but it has gone by too quickly and too busily. On this account we are planning to take the week after commencement to get acquainted—to spend a little time in the country together where we may enjoy life and each other's company at leisure. We are looking forward to our little outing with great eagerness. We wish you all as happy a vacation as we are sure to have. Let us never forget, dear Kappa Kappa Gamma during the summer months, and may we meet often and in many places, dear though strange friends who wear the key.

BETA NU—OHIO STATE UNIVERSITY.

Active Members.

Caroline Norton, '04,	Mabel Shride, '05,
Edna Pratt, '04,	Florence Covert, '05,
Ethyl Woodbury, '05,	Cassandra Gill, '06,
Florence Sackett, '05,	Nelle Malloy, '06,
Katharine Vogel, '05,	Gladys Sapp, '06,
Ethel Bryce, '05,	Florence Welling, '06,
Mabel Baldwin, '05,	Helen Vercoe, '06,

Ruth Hopwood, '06.

Chapter :—Number of active members, 15 ; total number of members since founding, 82 ; number of year's initiates, 6.

College :—Number in faculty, 130 ; number of students in collegiate department, 1,713 ; number of women in collegiate department, 230. Men's fraternities—Phi Gamma Delta, 14 ; Phi Kappa Psi, 14 ; Sigma Chi, 12 ; Phi Delta Theta, 15 ; Chi Phi, 9 ; Beta Theta Pi, 24 ; Sigma Nu, 9 ; Alpha Tau Omega, 11 ; Sigma Alpha Epsilon, 15 ; Phi Delta Phi, 16 ; Delta Tau Delta, 19 ; Kappa Sigma, 22. Women's fraternities—Kappa Kappa Gamma, 15 ; Kappa Alpha Theta, 13 ; Pi Beta Phi, 16 ; Delta Delta Delta, 12.

We have a chapter room but no chapter house.

It does not seem possible that before this letter is published the college year will be over. Beta Nu is very glad to be able to say that her college is steadily progressing. The College of Law moved into a beautiful new building during the year, and an addition has been built to our Chemistry Hall. These new buildings, of course, indicate an increase in the number of students. Our attendance is now about seventeen hundred, and we hope before long to be able to boast of two thousand students. If we had the money for a dormitory for women, we feel sure that there would be a marked increase in the number of women who would attend O. S. U. We trust it will not be many years before we will have this much needed building.

As for Beta Nu, she feels that she can boast of a very happy year, although she has been very unfortunate in the temporary loss of three girls on account of ill health, and the loss of one of her freshmen who has moved to Brooklyn.

The chapter sends best wishes to all her sisters for a very pleasant vacation.

BETA DELTA—UNIVERSITY OF MICHIGAN.

Active Members.

Pearl Taylor, '03,	Florence Burton, '05,
Lucy Elliott, '03,	Elma Bailey, '05,
Ida Andrus, '03,	Ruth Harrison, '05,
Dorothea Rouse, '04,	Jessie Tippy, '05,
Zayda Noe, '04,	Gertrude Smith, '05,
Kitty Avery, '04,	Sophie St. Clair, '05,
Frederika Hine, '04,	Mabel Reid, '06,
Lewis Kollock, '04,	Maude Durlin, '06,
Mary Hedden, '04,	Marie Lindsley, '06,
Blanche Enyart, '04,	Olive Wines, '06,
Mabelle Stewart, '05,	Persis Martin, '06,
Mary Probasco, Post-graduate.	

Chapter:—Active members, 23; total number of members since founding of chapter, 92; number of year's initiates, 6. Faculty confers no honors. Honors conferred by students: Pearl Taylor, executive board woman's league; Florence Burton, managing editor woman's edition of *Inlander*, executive board woman's league; Ruth Harrison, freshman spread committee; Elma Bailey, general chairman freshman spread; Maude Durlin, librarian girls' glee club; Sophie St. Clair, vice president sophomore German club.

College:—Number of faculty in collegiate department, 247; number of students in collegiate department, 3,800; number of women in collegiate department, 625. Separate list of men's and women's fraternities in order of establishment, with number of active members of each: Men's—Chi Psi, 18; Alpha Delta Phi, 23; Delta Kappa Epsilon, 22; Sigma Phi, 20; Zeta Psi, 15; Psi Upsilon, 29; Beta Theta Pi, 18; Phi Kappa Psi, 19; Delta Upsilon, 25; Phi Delta Theta, 27; Sigma Alpha Epsilon, 31; Theta Delta Chi, 18; Sigma Chi, 40; Delta Tau Delta, 26; Kappa Sigma, 20; Phi Gamma Delta, 27; Sigma Nu, 20; Professional; Phi Delta Phi, 28; Nu Sigma Nu, 30; Delta Sigma Delta, 30; Phi Chi, 14; Xi Psi Phi, 25; Delta Chi, 30; Alpha Sigma, 17; Phi Rho Sigma, 25; Phi Beta Pi, 22; Phi Alpha Gamma, 14. Women's—Gamma Phi Beta, 20; Delta Gamma, 22; Sorosis, 24; Pi Beta Phi, 23; Kappa Kappa Gamma, 23; Alpha Epsilon Iota, 16; Alpha Phi, 23; Kappa Alpha Theta, 22. Chapter house; rented.

Only a few weeks more and commencement will be here again. Why must college days, the happiest of our lives, pass away so quickly? The departure of our three seniors, Ida Andrews, Pearl Taylor and Lucy Elliott will be a great loss to us, and we are all trying to enjoy them as much as possible now without thought of the days to come when they will have left us.

Since the last KEY we have initiated a new Kappa, Persis Martin, who has become very dear already.

The University of Michigan has sustained a great loss in the resignation of Professor McLaughlin, head of the history department, who is to have the chair of history in the university at Washington. There is one bright spot in this for Beta Delta, for we are to have the McLaughlin house for our chapter home next year. It is a beautiful place and well situated, not too far from the campus. Our alumnae are helping us furnish it, and we are very well satisfied with our new home.

The "Kappa Komedy Klub" presented its annual play on May 22nd, and "When Greek meets Greek" was voted a great success. We had a tin shower the same evening, and have now many things needed for the kitchen of the new house.

We have a pledge to introduce to you, Corwine Sutherland, a Detroit girl who visited us during the inter-scholastic meet.



XI—ADRIAN COLLEGE.

Active Members.

Harriet F. Rowley, '03,	Sarah B. Everhart,
L. Edna Neer, '04,	Mayme I. Hearson,
Mary J. McCollum, '04,	Olive L. Neer, '06,
H. Myrtle McCollum, '06.	

Chapter :—Number of active members, 7 ; total number of members since founding of chapter, 123 ; number of year's initiates, 4. Honors conferred by faculty: Mary J. McCollum, class of '77 prize in English literature (conferred partially by faculty and partially by judges, appointed to judge upon theses.) Honors conferred by students: Harriet Rowley, president of Star literary society ; Mary McCollum, president Y. W. C. A. ; local editor of *College World*.

College :—Number of faculty in collegiate department, 10 ; number of students in collegiate department, 54 ; number of women in collegiate department, 21. Separate lists of men's and women's fraternities in order of establishment with number of active members in each: Men's—Alpha Tau Omega, 6 ; Sigma Alpha Epsilon, 8. Women's—Kappa Kappa Gamma, 7 ; Delta Delta Delta, 6.

Edna Neer and Sarah Everhart, who were out of college for some time on account of illness, have returned to us, and now as a reunited band of sisters we are having some very happy times together.

May twenty-sixth we celebrated the twenty-first anniversary of our chapter in an informal manner, but the celebration proper has been postponed until commencement week. Many alumnae have written that they hope to be with us at that time.

Another event of commencement week, which the girls of Xi are especially looking forward to, is the wedding of our only senior member. Thursday evening, May twenty-fifth, Harriet Florence Rowley, at her home on Madison street, is to be married to Rev. Thomas Milton Gladden, A T Ω, of Connellsville, Penn. Miss Rowley has been an active member of our chapter for four years; we shall miss her very much next year, but our best wishes shall go with her wherever she she may go.

In compliance with a request made in the April KEY we give the following information: The chapter rooms of Xi are situated in South Hall on the college campus. The college is located at the end of the street car line coming west from all depots. Saturday is the best day for calling upon us, yet Xi is glad to welcome to her home any Kappa at any time.

To every Kappa of every chapter, Xi sends greetings and best wishes.

KAPPA—HILLSDALE COLLEGE.

Active Members.

Ethel Gurney, '03,	Jessie Bailey, '05,
Nellie Johnson, '04,	Belle Ammerman, '05,
Anna Sands, '04,	Edith Cold, '06,
Idella St. John, '05,	Fannie Northrup, '06.

Chapter:—Active members, 8; total number of members since founding of chapter, 138; number of year's initiates, '4. Honors conferred by faculty: Elva Bailey, senior prize in English literature; Jessie Bailey, *Collegian* staff local editor; Anna Sands, winner of junior prize in American literature; Ethel Gurney, one of the two winners of the senior prize in English literature; Jessie Bailey, winner of the prize in advanced biology. Honors conferred by students: Ethel Gurney, valedictorian class '03, president senior class, fall term; president ladies' literary union, winter term; Anna Sands, president junior class, fall term; member of student's lecture course committee.

College:—Number of faculty in collegiate department, 14; number of students in collegiate department, 200; number of women in collegiate department, 80. Separate lists of men's and women's fraternities in order of estab-

lishment with number of active members in each : Men's—Delta Tau Delta, 7 ; Alpha Tau Omega, 10. Women's—Kappa Kappa Gamma, 8 ; Pi Beta Phi, 10.

Kappa chapter is glad to report a very happy and prosperous spring term.

A great source of inspiration to us has been the opportunity which we have had to meet Miss Sinclair, our Grand Treasurer, and to learn through her of many of our sister chapters. We are grateful to her for an added knowledge of our fraternity.

During Miss Sinclair's visit we gave a reception in her honor at the home of Professor Chase, and a party at the home of Mrs. Carl Bailey, one of our loyal alumnae.

One of the most enjoyable social events of this season was a reception given by $\Pi B \Phi$ to the college faculty and fraternities in honor of their *Arrow* editor.

On the evening of May 25th Mr. and Mrs. Carl Bailey entertained the members of $\Delta T \Delta$, $A T \Omega$, $\Pi B \Phi$ and $K K \Gamma$ for their sister, Jessie Bailey.

Since our last letter to the KEY we have pledged a new girl, Lu Dell Whedon, whom we are proud to introduce to Kappas.

We are now looking forward to July 4th, when Hillsdale College is to celebrate her fiftieth anniversary. At that time many of our alumnae will be in Hillsdale, and we are planning to hold a Kappa reunion.

Kappa sends greetings.

GAMMA PROVINCE.

DELTA—INDIANA STATE UNIVERSITY.

Active Members.

Elva Reeves, '05,	Clara Davis, '04,
Florence Morgan, '04,	Ella Brewer, '03,
Alta Doy Reeves, '06,	Ethel Lucas, '04,
Myrta Kathryne Fosler, '06,	Georgia D. Fosler, '04,
Grace W. Norwood, '05,	Ruby E. Bollenbacher, '06,
Lula A. Scott, '04,	Leona L. Turner, '05,
Carolyn Ethel Simmons, '06,	Ina K. Clawson, '05,
Gertrude E. von Thuemmler, '05,	Ethel Richards, '05,
Mary E. De Vol, '06,	Beryl Showers, (not in college),
Hazel W. Simmons, '06,	Grace Triplett, A. M., '03,
Gertrude Johnson, '06,	Calla Cassebaum, '03,
Hazel Lillard, '06,	Verba Laughlin, '06,
Alice B. Devol, '04,	Olive Dailey, '03,
Madeline Norton, '03,	Lila Burnett, '05,
Martha Scott, '04,	Lora Campbell, '06.

Chapter :—Number of active members, 30 ; total number of members since founding of chapter, 270 ; number of year's initiates, 10. Honors conferred by students : Martha Scott, president of Y. W. C. A. ; Georgia Fosler, captain basket ball team ; Madeline Norton, member of Strut and Fret ; Madeline Norton, *Arbutis* staff, '03 ; Ella Brewer, student play ; Ethel Richards, secretary class '05.

College :—Number of faculty in collegiate department, — ; number of students in collegiate department, 1,466 ; number of women in collegiate department, 558. Separate lists of men's and women's fraternities in order of establishment with number of active members in each : Men's—Beta Theta Pi, 17 ; Phi Delta Theta, 18 ; Sigma Chi, 20 ; Phi Kappa Psi, 21 ; Phi Gamma Delta, 18 ; Delta Tau Delta, 20 ; Sigma Nu, 20 ; Kappa Sigma, 20 ; Phi Delta Phi, 15. Women's—Kappa Alpha Theta, 24 ; Kappa Kappa Gamma, 30 ; Pi Beta Phi, 21 ; Delta Gamma, 16.

Since the last letter, Delta has initiated Gertrude Johnson and Hazel Lillard, and is glad to present them to Kappa at large. As their initiation occurred after the visit of Miss Sinclair, they were unable to have the benefit of her wise counsel. But the rest of the chapter enjoyed her visit to the fullest extent and hopes that it may often be repeated. Doubtless all the chapters feel as Delta does in this matter of visits from the members of the Grand Council,—it is the best way in the world to bring the chapters in touch with the Grand Council.

We have enjoyed visits from several of the girls who graduated last year and from several who, though not graduated, were unable to be in college work this year. To see the girls in their accustomed places among us, though they have been absent but a year, puts a new warmth in the hearts of the rest of us.

Delta has lately introduced a feature new to her but well-known to some other chapters,—that of making visits every week to various alumnae and those townspeople who are interested in the chapter. In this way we hope to be brought nearer to all who feel even the slightest interest in our welfare.



IOTA—DE PAUW UNIVERSITY.

Active Members.

Odessa Zeis, '03,	Nona Burkett '05,
Alice Switzer, '03,	Elsie Naylor, '05,
Sara Darby, '03,	Elma Haworth, '05,
Esther Bechtel, '03,	Beryl Hart, '05,
Nellie Switzer, '03,	Helen Black, '05,
Hallie Landes, '03,	Ethelyn Halstead, '05,
Ruth Pike, '03,	Jessie Lauber, '05,
Helen Hurst, '04,	Louise Wood, '06,
Lucia Hurst, '04,	Ruth Stone, '06,
Neva Pilkington, '05,	Jessie Conger, '06,
Edna Place, '05,	Martha Chambers, '06,
Bessie Baer, '05,	Estella Ham, '06,
Lulu Baer, '05,	Mayme Trueblood, '06,
Mildred Bishop, '05,	Edith Cline, '06,
	Hazel Bridges, '06.

Chapter :—Number of active members, 29 ; total number of members since founding of chapter, 275 ; number of year's initiates, 13. Honors conferred by faculty, Hallie Landes, Phi Beta Kappa. Honors conferred by students : Alice Switzer, manager of girls' basket ball team ; Helen Hurst, secretary of class of '04 ; Helen Black, secretary of class of '05 ; Edith Cline, secretary of class of '06 ; Edith Cline, president of Y. W. C. A.

College :—Number of faculty in collegiate department, 22 ; number of students in collegiate department, 600 ; number of women in collegiate department, 260. Separate lists of men's and women's fraternities in order of establishment with number of active members in each : Men's—Beta Theta Pi, 13 ; Phi Gamma Delta, 12 ; Sigma Chi, 11 ; Phi Kappa Psi, 25 ; Delta Kappa Epsilon, 13 ; Delta Tau Delta, 8 ; Phi Delta Theta, 15 ; Delta Upsilon, 13 ; Sigma Nu, 15. Women's—Kappa Alpha Theta, 29 ; Kappa Kappa Gamma, 29 ; Alpha Phi, 21. Music school—Alpha Chi Omega, 18 ; Phi Mu Epsilon, 10.

June finds the students of De Pauw occupied with preparations for the approaching festivities of commencement week, the trying ordeals of final examinations, and the happy return home.

To Kappas there is a feeling of sadness mingled with all that is pleasant on such occasions, caused by the thought of how our band will be broken next year. First, there are seven noble seniors whose names must be transferred from the active to the alumnae roll. Then some of the girls of '05 and '06 are uncertain about coming back. With such happy good times as we have had together, gone; with such friendships as we had formed, to be broken off so soon, is it strange that the thought of parting makes us sad?

As we look back on the year just gone, we find but few things to regret. We have many pleasant things to remember. We have had our share in the many pleasures of the college world, we have enjoyed a most prosperous year in the university, and in the end have added another member to the Phi Beta Kappa list—Miss Hallie Landes.

One of the greatest pleasures as well as the greatest benefit which this chapter has enjoyed was in the visit from Miss Sinclair. But what she did for us she did for you, our sister chapters, and we can join in happy congratulations with each other, knowing that she is our friend.

College closes the 10th of June and each Kappa goes to her home. May she have a happy vacation and may the love she bears Kappa draw her just a little nearer the lofty standard.



MU—BUTLER COLLEGE.

(No report.)

Since our last letter Mu has two new Kappas to introduce. April 20th we initiated Kelsey Black, of Irvington, and Nell Wheeler, of Indianapolis. We have since pledged Charlotte Griggs, who is to be initiated June 4th at the home of one of our alumnae, Mrs. Thomas C. Howe.

Commencement week at Butler is to be a full one. On class day some of the students will give "As You Like It," on the campus. Charlotte Griggs will take the part of Rosalind; Charlotte Powell, that of Audrey. Three of our Kappas are among

the graduates—Helen Downing, Isabel Vanzant and Charlotte Powell. On commencement night we will give our annual party. Friday noon, on the campus, there will be a reunion of active and alumnae Kappas.

Miss Sinclair's visit this term was a source of both pleasure and profit. During her stay we entertained her at the home of Mrs. C. B. Coleman, Mu, ex-'02, who turned over her house to us while on a visit. This little taste of chapter house life has made us very anxious for at least one room of our own.

Mu sends greetings to all sister chapters.



ETA—UNIVERSITY OF WISCONSIN.

Active Members.

George Challoner, '03,	Martha Fay, '06,
Bess Morrison, '03,	Bess Smith, '06,
Helen Case, '03,	Lenora Falk, '06,
Genivieve Mihills, '03,	Jessie Corse, '06,
Clara Froelich, '03,	Jessie Johnson, '06,
Julia Pindlaub, '03,	Florence de Lap, '06,
Alma Peterson, '03,	Grace Monroe, '06,
Mary Alice Gillen, '04,	Maud Monroe, '06,
Minnie Riess, '05,	Bernice Banning, '06,
Litta Fuller, '05,	Hazel Belt, '06,
Mary Severson, '05,	Barbara Munson, '06,
Lois Main, '05,	Florence Rietson, '06.

Chapter :—Number of active members, 24 ; total number of members since founding of chapter, 187 ; number of year's initiates, 12. Honors conferred by faculty : George Challoner, Phi Beta Kappa. Honors conferred by students : G. Challoner, red domino and class play ; M. A. Gillen, *Badger* board ; M. Riess, *Badger* Board ; Clara Froelich, managing editor *Woman's Cardinal* ; F. de Lap, president woman's athletics ; H. Case, board of *Woman's Cardinal*.

University :—Number of faculty in collegiate department, 197 ; number of students in collegiate department, 2,700 ; number of women in collegiate department, 500. Separate lists of men's and women's fraternities in order of establishment with number of active members in each : Men's—Phi Delta Theta, 29 ; Beta Theta Pi, 24 ; Phi Kappa Psi, 19 ; Chi Psi, 22 ; Sigma Chi, 22 ; Delta Upsilon, 35 ; Delta Tau Delta, 27 ; Phi Gamma Delta, 16 ; Theta Delta Chi, 25 ; Psi Upsilon, 30 ; Kappa Sigma, 24 ; Phi Kappa Sigma, 19 ; Sigma Nu, 20 ; Alpha Delta Phi, 19 ; Sigma Alpha Epsilon, 30. Women's—Kappa Kappa Gamma, 23 ; Delta Gamma, 22 ; Gamma Phi Beta, 20 ; Kappa Alpha Theta, 21 ; Phi Beta Phi, 21 ; Alpha Phi, 22 ; Tri Delta, 18 ; Chi Omega, 14.

Since our last letter we have had the pleasure of having our Grand Treasurer, Miss Sinclair, with us for a short visit. Her visit has been a great inspiration to us, and we feel if possible greater enthusiasm and zeal for our fraternity than ever. On Tuesday, April 28th, Miss Sinclair met the alumnae at the chapter house. Wednesday Ethel Raymer entertained the active chapter at a Kappa luncheon, and Wednesday evening Miss Sinclair talked to the active chapter on matters of general and local fraternity interest.

Delta Gamma held a very successful convention at Madison, May 12th to 15th inclusive. About 150 members were in attendance. May 15th the chapter was at home to the local chapter of Delta Gamma and their visiting guests.

On the evening of May 15th we held our annual spring party at the chapter house. Three of our alumnae, Lucile Cheever, Florence Weissert, Bertha Taylor, and one of our pledges, Ella Harris, were with us at that time.

We are very proud to announce that George Challoner, one of our seniors, was chosen Phi Beta Kappa at the recent election.

At the meeting of the Board of Regents in April, Professor Van Hise, a member of the faculty, was elected president of the university. The inauguration, in all probability, will not take place until next fall.

May 30th is the date set for the annual inter-scholastic meet, and we expect to have a number of guests with us at that time.

The college world, just at present, is interested in the water carnival to be given by the senior class in the near future. Madison is at its best this month, and we look forward with regret to the close of the college year.

BETA LAMBDA—UNIVERSITY OF ILLINOIS.

Active Members.

Ruth Abbott, '03,	Anne D. White, '04,
Caroline Longworthy, '03,	Charlotte Jackson, '04,
Mabel Hayward, '03,	Inez Pilise, '04,
Lucile Jones, '04,	Emily Nichols, '05,
Charlotte Gibbs, '04,	Mary Moss, '05,
Helen Stookey, '04,	Florence Armstrong, '06,
Caroline White, '04,	Elizabeth Groff, '06,
Leila King, '04,	Jennie Craig, '06,
Aimee Sides, '04,	Annabell Fraser, '06,
Flora Hunter, '06.	

Chapter.—Number of active members, 19; total number of members since founding of chapter, 43; number of year's initiates, 8. Honors conferred by faculty: Anne White, Watcheka league play; Caroline White, university orchestra. Honors conferred by students: Ruth Abbott, vice president '03 class; Caroline White, '04 basket ball team; Charlotte Gibbs, treasurer Watcheka league; Charlotte Jackson, Phi Delta Psi (junior frat); Helen Stookey, Phi Delta Psi; Aimee Sides, vice president '04 class; Mary Moss, Althenai literary society, Y. W. C. A. cabinet.

University.—Number of faculty in collegiate department, 337; number of students in collegiate department, 3,089; number of women in collegiate department, 650. Separate lists of men's and women's fraternities in order of establishment with number of active members in each: Men's—Sigma Chi, 29; Kappa Sigma, 21; Phi Delta Theta, 33; Delta Tau Delta, 21; Alpha Tau Omega, 22; Phi Gamma Delta, 24; Sigma Alpha Epsilon, 25; Beta Theta Pi, 23; Sigma Nu, 18; Phi Kappa Sigma, 18. Professional—Phi Lambda Upsilon, 13; Tau Beta Pi, 16; Phi Delta Phi, 21; Alpha Zeta, 14; Theta Kappa Nu, 14; Nu Sigma Nu, 24; Phi Rho Sigma, 21; Alpha Omega Alpha, 36; Alpha Kappa Kappa, 30; Phi Beta Phi, 26; Delta Sigma Delta 25; Xi Psi, Phi, 16; Psi Omega, 16. Women's—Kappa Alpha Theta, 22; Pi Beta Phi, 23; Kappa Kappa Gamma, 19; Alpha Chi Omega, 23; Chi Omega, 17. Medical—Alpha Epsilon Iota, 22; Mu Sigma Phi, 16.

Beta Lambda sends greetings to her sister chapters. We are all pleased with our year's work and are very happy at next year's prospects except when we stop to think how much we will miss Ruth Abbott, Mabel Hayward and Caroline Langworthy, who are our seniors and graduates this spring.

Our Grand Treasurer, Virginia Sinclair, visited us not long ago. All who have been fortunate enough to have Miss Sinclair visit them know how much good she did us and what helpful things she said to us.

The 29th of April was the anniversary of the founding of our chapter and we had a birthday party at Crystal Lake. There is no need to tell you what fun we had, because you all know what birthday parties are.

This year's May Festival was a great success. The Boston Festival orchestra gave a concert, and "Elijah" and the "Golden Legend" were given by a chorus of students and soloists from Boston.

We entertained three high school girls during interscholastic time. On Thursday night after the May pole we gave a little dance in their honor at our house. We are sure that all of you would have enjoyed being at the May pole dance and seeing the girls and our beautiful campus.

This spring every Tuesday evening at 6:30, the students have been meeting upon the back campus to sing college songs. This is a splendid way to arouse spirit and enthusiasm. The Thetas and our girls are going to have a picnic lunch Thursday evening and are expecting to enjoy it very much.

We want to tell you how proud we are of our base ball team. It is sure of the championship, and we are all going to celebrate when it receives this hard-earned honor. Beta Lambda wishes you all a happy vacation and great success next fall when the new girl comes to school.



UPSILON—NORTHWESTERN UNIVERSITY.

(No report.)

Since its last letter Upsilon has enjoyed a visit from the Grand Treasurer, Miss Sinclair. We are glad to say that Elizabeth Bucknam's name appeared among those elected to Phi Beta Kappa this year. We are very proud of our rooms now since they have been papered in the light and dark blue, and we have some new furnishings. Upsilon has a rather unusual announcement to make just now—we are to have six weddings this summer.

Tonight "Trig," the freshman play, makes its annual appearance. It is distinctly freshman, being written and presented by the men of the freshman class.

"Quests of Quezarre," was a comic opera given and written by the men of the university this month for the benefit of the northern oratorical league.

We gave a handkerchief and stocking shower, and spread last Monday evening for Lola Newcomb.

Our examinations are next week and we shall soon be scattered. Wishing her sisters in Kappa Kappa Gamma a pleasant vacation Upsilon sends greetings.



EPSILON—ILLINOIS WESLEYAN UNIVERSITY.

Active Members.

Clara Fort, '03,	Carrie Leach, '04,
Elizabeth McClure, '03,	Emma Parker, '05,
Christie Parker, '03,	Elizabeth Roe, '05,
Grace McIntyre, '04,	Louise McIntyre, '06,
Bessie Cash, '04,	Clara Naffziger, '06,
Carrie Atkinson, '04,	Lucy Williams, special,
Beulah Baker, '04,	Louie Howell, special,
Grace Parker, '02.	

Chapter :—Active members, 15 ; total number of members since founding, 189 ; number of year's initiates, 6. Honors conferred by faculty : Bessie Cash, local editor of *Argus*. Honors conferred by students : Christie Parker, vice president of senior class ; Grace McIntyre, president of junior class ; Emma Parker, vice president of sophomore class ; Carrie Atkinson, president of Y. W. C. A.

University :—Number of faculty in collegiate department, 12 ; number of students in collegiate department, 338 ; number of women in collegiate department, 80. Fraternities in order of establishment with number of active members : Men's—Phi Gamma Delta, 13 ; Sigma Chi, 10. Women's Kappa Kappa Gamma, 14.

We have a room on the second floor of the University building. The faculty allow us to have the room free of rent.

Only two weeks more ! Then we must say good bye for the summer. We are all anxiously looking forward to vacation, yet the thought that our three seniors will not be with us next year adds a tinge of sadness to what would otherwise be a happy time for us all. The girls who graduate this year are Elizabeth McClure, Christie Parker and Clara Fort.

We had a very pleasant time at our annual in March, and were very glad to have six Beta Lambda girls with us at that time. On the Saturday afternoon following our party, the Kappa club very delightfully entertained us at the home of Mrs. Marquis, one of our alumnae.

During the next two weeks we expect to have several little picnics and parties, and before we realize it, commencement will be a thing of the past and we will be home looking forward just as eagerly for the time when we will be together again, as we are now looking forward to our summer vacation.

Epsilon hopes that all her sisters may have a very enjoyable summer.



DELTA PROVINCE.

CHI—UNIVERSITY OF MINNESOTA.

Active Members.

Harriet L. Armstrong, '03,	Kathleen Gunckel, '05,
Elizabeth S. Brown, '03,	Helene Kennedy, '05,
Cornelia Kennedy, '03,	Helen Patterson, '05,
Elsie Stone, '03,	Marjorie Bullard, '06,
Cleora Wheeler, '03,	Anne Jones, '06,
Polly C. Bullard, '04,	Mary Wyman Lawrence, '06,
Helen P. Burbidge, '04,	Flora Edwards, Sp.,
Sue Wein, '04,	Grace Gillette, Sp.,
Helen Clarke, '05,	Elsie Kapper, 'Sp.

Chapter :—Active members, 18 ; total number of members since founding of chapter, 170 ; number of year's initiates, 6. Honors conferred by students: Helen Clarke, associate editorship '05 *Gopher*.

University :—number of faculty in collegiate department, 109 ; number of students in collegiate department, 1,200 ; number of women in collegiate department, 635. Separate list of men's and women's fraternities in order of establishment with number of active members in each : Men's—Chi Psi, 19 ; Phi Delta Theta, 21 ; Delta Tau Delta, 20 ; Phi Kappa Psi, 24 ; Sigma Chi, 27 ; Beta Theta Pi, 24 ; Delta Kappa Epsilon, 23 ; Phi Gamma Delta, 23 ; Delta Upsilon, 27 ; Psi Upsilon, 15 ; Alpha Delta Phi, 21 ; Theta Delta Chi, 17 ; Zeta Psi, 23 ; Kappa Sigma, 24 ; Sigma Alpha Epsilon, 26 ; Alpha Tau Omega, 17 ; Phi Delta Phi (law), 20 ; Nu Sigma Nu (medic), 29 ; Phi Alpha Gamma (medic), 10 ; Alpha Kappa Kappa (medic), 32 ; Delta Chi (law), 14 ; Delta Sigma Delta (dental), 22. Women's—Kappa Kappa Gamma, 18 ; Delta Gamma, 19 ; Kappa Alpha Theta, 22 ; Alpha Phi, 18 ; Delta Delta Delta, 17 ; Gamma Phi Beta, 20.

No chapter house ; two rooms rented.

To all in Kappa Kappa Gamma, greeting : The busiest time of the college year is upon us and the days seem to fly by on wings.

Our six seniors whom we so dread to lose are more than busy with their final examinations, class play rehearsals, and all the other excitement which comes with commencement. Elizabeth Brown is leading lady in the play.

On the eighth of June we active girls, and any of the alumnae who can, leave for our annual house party at Prior Lake. This has come to be one of the big events of the year, and we are eagerly anticipating it.

Early in March we had a brief visit from Mina Loew, Upsilon, and in April Grace Morehouse, Beta Delta, was with us. Our only regret was that both of them could stay so short a time.

For several years we have been threatening to entertain our mothers, but never have our plans been consummated until recently when we gave a luncheon for them in our rooms. We had such a good time at that, and thinking that we didn't know the other girls in college well enough, we decided to give a series of luncheons, to which each Kappa asked some other college girl. The plan worked better than we had dared hope.

President Roosevelt was in Minneapolis on April fourth, and spoke to a throng of enthusiastic students in chapel.

As usual, we celebrated Chi's birthday by holding our banquet on April 21st. There were sixty of us at the table.

On May second the active chapter, with Dr. Mabel Austin as chaperon, went out to Mrs. Gillette's cottage at Lake Minnetonka for a splendid house party of three days.

Mrs. Edward Gale, one of our alumnae, is beautifying our campus very extensively with high iron fence, stone arched gateways, landscape gardening and new driveways. She is having all these improvements made as a memorial to her father, the late Gov. Pillsbury, who is known as "the father of the University of Minnesota."

BETA ZETA—IOWA STATE UNIVERSITY.

Active Members.

Maud Cleveland Kingsbury, '02,	Mae Rex, '05,
Julia Padmore, '03,	Joanna Strange, '05,
Jean Macbride, '03,	Alice Remley, '06,
Gladys Call Whitley, '03,	Grace Padmore, '06,
Elanore Hayes, '03,	Adelaide Smith, '06,
Helen Morton, '03,	Margaret Buddington,
Fan Lilley, '04,	(affiliated) Librarian.
Ethelind Service, '04,	Alice Ankeney,
Mary Makepeace Morris, '04,	Ass't Instructor Chemistry.
Bertha Kriechbaum, '04,	Katherine Hayes, Sp.,
Marie Lynch, '04,	Left university.
Alice Clapp, '05,	

Chapter :—Active members, 20 ; total number of members since founding of chapter, 122 ; number of year's initiates, 6. Honors conferred by faculty : Gladys Whitley, Phi Beta Kappa ; Julia Padmore, Phi Beta Kappa ; Helen Morton, Phi Beta Kappa. Honors conferred by students : Mary Makepeace Morris, junior annual board ; Fan Lilly, junior annual board ; Marie Lynch, junior orator for Erodolphian literary society.

University :—Number of faculty in collegiate department, 91 ; number of students in collegiate department, 633 ; number of women in collegiate department, 246. Separate lists of men's and women's fraternities in order of establishment with number of active members in each : Men's—Beta Theta Pi, 18 ; Phi Kappa Psi, 16 ; Delta Tau Delta, 20 ; Sigma Chi, 15 ; Phi Delta Theta, 19 ; Sigma Nu, 24 ; Phi Delta Phi, 22 ; Xi Psi Phi, 15 ; Phi Rho Sigma, 17 ; Kappa Sigma, 17. Women's—Pi Beta Phi, 14 ; Kappa Kappa Gamma, 19 ; Delta Gamma, 10.

With the summer rapidly approaching the thought comes upon us in all its force, that in a few weeks we will be separated, some of us for three months, some for years, some, perhaps, for all time. Each fraternity meeting marks a step toward this separation and brings with it a feeling of sadness.

Five of our girls graduate in June and none of them expect to return in the fall. We are rejoicing over the fact that three Kappas, Gladys Whitley, Julia Padmore and Helen Morton are among those honored by election to Phi Beta Kappa.

The visit we enjoyed from Miss Sinclair, our Grand Treasurer, will long be remembered. A noble type of the true fraternity woman, she inspired us all with lofty ideals and ambitions for ourselves, the chapter and the whole fraternity. During her

stay we held an informal reception to our alumnae at the home of Mrs. Cannon, where all the Kappas in town united in giving Miss Sinclair a welcome to Beta Zeta.

Edith Macomber spent a few days with us and while she was here we entertained the younger alumnae at a picnic spread at the home of Helen Caader, across the river.

In April the district convention of Phi Kappa Psi was held here and the local chapter entertained the visitors at a large armory party. The junior prom, the military ball, and Delta Tau Delta party were prominent among the post-lenten festivities, the last being voted one of the most brilliant and successful functions ever held here.

On May 8th a daughter, Margaret, was born to Mr. and Mrs. Ed Wilson. Mrs. Wilson (Rita Stewart) is one of our most interested and enthusiastic alumnae, and great is the rejoicing over the new fraternity baby.

We are looking forward to visits from Mae Shaner and Florence Surley, '02, during commencement week, and hope to have others with us.



THETA—MISSOURI STATE UNIVERSITY.

Active Members.

Mary Allen,	Leota Dockery, '04,
Maude Montgomery, '02,	Florence Robinson, '06,
Maude Barnes, '04,	Lou Wooldridge, '04,
Madeline Branham, '04,	Rose Burns, '06,
Marion Burruss, '05,	Gail Poor, '06,
Halley Prentis, '06,	Edith Stoner, '04,
Carolyn Stoner, '03,	May Walker, '03,
Carrie R. Bird,	Ella Read, '05,

Marie Flemming, '05.

Chapter:—Active members, 17; total number of members since founding of chapter, 150; number of year's initiates, 9. Honors conferred by faculty: Carolyn Stoner, Phi Beta Kappa, gymnasium instructor; Mary Walker, Phi Beta Kappa, fellowship in mathematics, junior scholarship; Leota Dockery, prize in declamation. Honors conferred by students: Madeline Barnham, local editor of *Independent*; Edith Stoner and Madeline Branham, managing editors of the girls number of the *Independent*; Mary Walker, president of Y. W. C. A.; Carolyn Stoner, secretary senior club, '03; Edith De Bolt, treasurer senior club, '04; Halley Prentis, basket ball team, '06, class team; Maud Montgomery, university team basket ball; Maude Barnes, queen of the May festival.

University.—Number of faculty in collegiate department, 125; number of students in collegiate department, 1,242; number of women in collegiate department, 265. Fraternities in order of founding, with number of active members in each: Men's—Phi Delta Theta, 14; Sigma Alpha Epsilon, 16; Sigma Nu, 16; Beta Theta Pi, 16; Kappa Alpha, 21; Sigma Chi, 19; Kappa Sigma, 14; Phi Gamma Delta, 15. Women's—Kappa Kappa Gamma, 17; Pi Beta Phi, 14.

Greetings to all sisters.

The national fraternity feeling in Theta chapter has been given a new impetus this semester by the visit of the Grand President, Mrs. May W. Westermann. Some of the girls of the present chapter had never met a member of the Grand Council, so imagine our delight in finding our Grand President to be the most loveble, charming woman we had ever met. We were so proud to introduce her to our town friends, to the wives of the members of the faculty and to other university girls at a reception given at the chapter house. Two very lucky girls, Lulubel Wooldridge and Florence Robinson were initiated while Mrs. Westermann was here.

Mrs. O. M. Stewart, wife of the Professor of Physics, gave the Kappas a most delightful tea.

Mrs. MacFarlane received the Kappa Kappa Gamma and Pi Beta Phi's, May 19, and Mrs. W. J. Brown gave a dance to both sororities May 29. Both functions were highly appreciated and enjoyed.

Mrs. May Lee Reed, '01, who has been visiting her mother, entertained all the girls most charmingly at "flinch."

Theta has not given all her time to the social side of life, but has been at work along more serious fraternity and collegiate lines. Mary Walker, '03, has been given a fellowship in mathematics for next year. Leota Dockery won the second prize in the declamatory contest, the second time a girl has been given a place on this contest.

We are proud to introduce our latest pledge, Clara Shelton.

Gail Poor had the title role in the comic opera, Priscilla, given by amateur talent; Adele Heming also had an important part.

Next year we will occupy the home of Dr. Jones, dean of the academic department, during his absence in Europe.

On May 20th the alumnae and active members gathered at the chapter house for a farewell spread.

SIGMA—UNIVERSITY OF NEBRASKA.

Active Members.

Grace Bennett, '03,	Elsie Fawell, '06,
Louise Hargreaves, music, '03,	Ruth Wilson, '05,
Claire Funke, '04,	Gliadys Hargreaves, '06,
Inez Manrid, '04,	Edith Butler, '06,
Anna Hammond, '04,	Bertha Shidler, '06,
Mabel Stephen, '04,	Zoe Glidden, '06,
Edith Shedd, music, '04,	Mabel Kimball, Sp.,
Olive States, '05,	Kate Gellatly, Sp.,
Edith Locke, '05,	Blanche Edmiston, Sp.,
Mabel Bennett, Sp.	

Chapter :—Active members, 18 ; total number of members since founding of chapter, 114 ; number of year's initiates, 7. Honors conferred by students: Olive States, president of Pan-Hellenic association ; Edith Butler, secretary of class.

University :—Number of faculty in collegiate department, 140 ; number of students in collegiate department, 2,289 ; number of women in collegiate department, 1,300. Fraternities in order of establishment : Phi Delta Theta, Sigma Chi, Beta Theta Pi, Delta Tau Delta, Sigma Alpha Epsilon, Phi Kappa Psi, Alpha Tau Omega, Kappa Sigma, Phi Gamma Delta, Delta Upsilon. Local—Alpha Theta Chi. Women's—Kappa Kappa Gamma, Kappa Alpha Theta, Delta Gamma, Delta Delta Delta, Pi Beta Phi, Chi Omega.

Commencement times again! But even in the rush of examinations, graduation and all the social events which are crowded into the last few weeks of school, the thought of separation is dominant. We girls who live in the frat house, especially, are wondering how we can live apart for three months. The one consolation is, "what we'll do next year." What glorious plans we have!

We are not so unfortunate as some chapters, for most of our girls will be back in the fall. We lose only two by graduation, and as they live in town we will still have them with us. Grace Bennett is the lucky girl who receives her sheepskin this year, and Louise Hargreaves, our president, graduates from the school of music.

The climax of Kappa commencement time will be the wedding, on June tenth, of Miss Adelloyd Whiting to Mr. Fred Williams. Adelloyd is one of our most loyal and best loved alumnae, and we are so glad she will not live far from Lincoln. We have eagerly accepted her invitation to have frat meeting at her home in Seward, some time next year.

Our alumnae, who have always been very active, have formed an association. Blanche Hargreaves, the Grand President's Deputy, organized it, and one of our charter members, Mrs. Warner, is the president.

Several of out-of-town alumnae were here for the banquet and it is a question who were more glad to see them—the girls who knew them in school, or we freshmen who had only heard of them. Four other chapters were represented too: Beta Beta, Omega, Beta Tau and Epsilon. The girls, all with powdered hair and black patches, looked beautiful around the flower-laden table, and vied in brilliancy with the sparkling glass and silver candle sticks.

Since our last letter the sororities here have organized a Pan-Hellenic association, of which one of our girls is president. The girls have had one social meeting, a reception, held in the armory. Most of the afternoon was spent in dancing, and no two girls of the same sorority were allowed to dance together, since the object of the association is that we may get better acquainted with girls of other fraternities.

We wish all Kappa Sisters a delightful summer.



OMEGA—KANSAS STATE UNIVERSITY.

Active Members.

Katherine Sellers, '03.	Winifred Hammond, '04,
Mabel Henry, '03,	Hortense Street, '04,
Ida McKnight, '03,	Eva Mitchell, '04,
Maude Spinning, '03,	Edith Levan, '04,
Josephine Searles, '04,	Ida Ainsworth, '05,
Mary Burwell, '04,	Maude Olander, '05,
Edith Scholey, '04,	Vivien Springer, fine arts,
Neva Lehman, '04,	Grace King, fine arts,
Mida Stanton, '04,	Margaret Perkins, fine arts,
Lilian Axtell, '04,	May Kanaga, Sp.,
Eva Hirst, '04,	Maude Russell, Sp.

Chapter:—Active members, 22; total number of members since founding of chapter, 164; number of year's initiates, 5. Honors conferred by faculty: Ida McKnight, Phi Beta Kappa; also has the English fellowship for following year. Honors conferred by students: Ida McKnight, member senior play committee took part in the Senior play; Maude Spinning, member of class day committee; Maude Spinning, member of dramatic club; Maude Spinning, took part in senior play; Edith Levan, secretary of sophomore class; Mary Burwell, literary editor of *K. U. Weekly*; Josephine Searles, in junior farce.

University.—Number of faculty in collegiate department, 84; number of students in collegiate department, 1,235; number of women in collegiate department, 500. Separate lists of men's and women's fraternities in order of establishment with number of active members in each: Men's—Beta Theta Pi, 32; Phi Kappa Psi, 17; Phi Delta Theta, 23; Omicron Gamma Theta, 18; Sigma Chi, 21; Sigma Nu, 12; Theta Nu Epsilon, 20; Alpha Tau Omega, 19; Sigma Alpha Epsilon, 21. Women's—Pi Beta Phi, 30; Kappa Alpha Theta, 22; Kappa Kappa Gamma, 20; Chi Omega, 16.

So short have the last two months seemed that we can hardly realize that commencement is here again. The senior class this year will give for the annual play Shakespeare's comedy "As You Like It." Two of our girls will take part, Ida McKnight playing Celia and Maud Spinning, Audrey. The juniors gave their prom the fifteenth of April. The sophomores, true to tradition, tried to keep them at home but were soon forced to let them go. One of our girls took a leading part in the little farce given before the dancing began. On the first of May occurred the annual Maypole fight between the freshmen and sophomores. The freshmen raised their battered flag on the campus some time the night before. The sophomores made a determined fight and it seemed for a time that they would replace the freshmen colors with their own, but the class of '06 kept up the defense until the whistle blew at ten o'clock. Then the flag was lowered and they all went into chapel.

We regret to learn of the resignation of Prof. George Barlow Penny, who has been the Dean of the school of Fine Arts for thirteen years. His successor has not yet been appointed.

The ladies of the faculty gave a reception last month, that the students of the university might meet Mrs. Strong, the wife of our new chancellor.

We were sorry to lose two of our girls this spring. Mary Smith returned to her home in Connecticut early in April, and Edith Scholey was called home the first of May by illness. A pretty violet luncheon and a vaudeville show were given for the girls before they left us.

The annual spring concert of the Y. W. C. A. was given this year under the auspices of Kappa Kappa Gamma. Besides those of our town alumnae who helped us make this a success, we were further assisted by Mrs. John Troutman (Nellie Franklin), and Mrs. W. H. Wallace (Abbie Noyes) from out of town.

BETA MU—COLORADO STATE UNIVERSITY.

Active Members.

Nettie Jeanette Schwer, '03,	Della Gardner, '04,
Neata Clark, '03,	Mary Elizabeth Lannon, '05,
Eva Beatrice Corley, '03,	Maude Diane MacAdam, '05,
Nellie Williams, '04,	Edith Belle Miller, '05,
Harriett Virginia Allen, '04,	Alice Irene Parks, '06,
Jeanne Coulter, '04,	Minnie Lee Brown, '06,
Eugenie Jewel Carson, '06.	

Chapter :—Active members, 13 ; total number of members since founding of chapter, 27 ; number of year's initiates, 4. Honors conferred by students: Della Gardner, treasurer of the women's league, 1902-03 ; Della Gardner, president of women's league, 1903-04 ; Nellie Williams, treasurer women's league, 1903-04 ; Jeanne Coulter, editor-in-chief of the *Silver and Gold*, 1903-04 ; Rose Affolter (pledge), artistic editor of the *Annual*, 1903-04 ; Nettie Schwer, Maude MacAdam, Rose Affolter (pledge), members regular basket ball team.

University :—Number of faculty in collegiate department, 45 ; number of students in collegiate department, 290 ; number of women in collegiate department, 160. Separate lists of men's and women's fraternities in order of establishment with number of active members in each : Men's—Delta Tau Delta, 24 ; Sigma Alpha Epsilon, 19 ; Beta Theta Pi, 17 ; Alpha Tau Omega, 20 ; Sigma Nu, 18 ; Phi Delta Theta, 17 ; Omega Upsilon Phi, 16. Men's local—Heart and Dagger (1900), 4. Men's and women's—Omega Honor Society (1902). Women's—Pi Beta Phi, 25 ; Delta Gamma, 17 ; Kappa Kappa Gamma, 13. Women's local—Phi Epsilon, 9.

We have a chapter house ; rented.

At present the girls of Beta Mu are very busy preparing for the final examinations, and they now feel that the end of this school year is too quickly drawing to a close. We all regret having to leave our dear old chapter house and wish we could remain together during the entire year.

Three seniors will leave us this year, Nettie Schwer, Eva Corley and Neata Clark. During commencement week we expect to have with us several members of our alumnae, Kate Todd, Wilabelle Royace, and Mae Carroll.

This year we have been very happy, and more than ever before have enjoyed our chapter house, for during the year we have been able to entertain with dancing parties the members of the different men's fraternities.

The sixteenth day of May was high school day and there were in Boulder about two thousand visitors, the greatest number of

whom were from the various high schools of the State. We consider high school day as one of the most important events of the year. We were glad to have with us on that day several Kappas from the Denver alumnae association, Mrs. Sechrist, Miss Alling, Miss Grace, June Willits and Kate Todd.

We are very proud of our new pledge, Rose Affolter.

All the students and faculty of the U. of C. are rejoicing over the two-fifths mill appropriation, which will increase our income to \$160,000 a year.

Mrs. Allen, with her baby boy, a short time ago returned from Canada.



BETA XI—UNIVERSITY OF TEXAS.

Active Members.

Alma Jones, '03,	Howard Hearne, '05,
Helen Devine, '03,	Annie Joe Gardner, '05,
Eva Sodekson, '03,	Virginia Rice, '05,
Olatia Crane, P. G.,	Ethel Morey, '06,
Julia Ideson, '04,	May Jarvis, '06,
Helen Simkins, '04,	Eleanor Breckenridge, '06,
Katherine Searey, '05,	Louise Malloy, '06,
Fanny West Harris, '05,	Mary Stedman, '06,
Lois Lake, '05,	Carrie Gardner, '06.

Chapter:—Active members, 18; total number of members since founding of chapter, 23; number of year's initiates, 7. Honors conferred by faculty: (Faculty confer no honors.) Honors conferred by students: Helen Devine, editor of *Cactus*, member of woman's council, class prophet, vice-president of Ashbel; Alma Jones, treasurer, Ashbel; V. Rice, treasurer, Ashbel; K. Searey, secretary, sophomore class; C. Gardner, M. Stedman, secretary, freshman class; J. Ideson, member woman's council, class historian, assistant editor of the *Magazine*.

University:—Number of faculty in collegiate department, 73; number of students in collegiate department, 1,278; number of women in collegiate department, 304. Fraternities in order of establishment, with number of active members in each: Men's—Phi Delta Theta, 21; Beta Theta Pi, 15; Kappa Sigma, 16; Sigma Alpha Epsilon, 15; Sigma Chi, 17; Kappa Alpha, (southern) 15; Sigma Nu, 9; Chi Phi, 13; Phi Phi Phi, 10; Alpha Tau Omega, 12; Phi Gamma Delta, 23. Women's—Pi Beta Phi, 17; Kappa Kappa Gamma, 18; Beta Epsilon (local), 9.

Beta Xi sends greeting.

Examinations are so near that we have hardly had time, lately, to think, but in the last few weeks we have stopped our arduous

labors long enough to enjoy a card party given the Kappas and the Sigma Chi by Olatia Crane, and an informal dance at the house of one of our town friends, Miss Christine Littlefield; and to give a very informal "evening" ourselves. This last was at the home of Eleanor Breckinridge, our "baby."

Bessie Austin, of Psi, who was affiliated with us last year, has come back, much to our delight, and is now assistant librarian.

And next year—we are very enthusiastic about this—we are going to have a house of our own, and we are looking forward to the grandest of times in it. The only thing which saddens us is that our post-graduate and two of our seniors, Alma Jones and Eva Sodekson, will not be here to enjoy it with us. Helen Devine will, however; she is going to teach in Austin, and of course we are very happy about it.

Two of our last year's members, Lucile Wathen and Grace Gould, were in New Orleans at the recent Confederate reunion—Lucile as maid-of-honor to Gen. Scurry, and Grace as sponsor to the John Reagan Camp. From the glowing accounts they sent us, they seem to have enjoyed it immensely.

Best wishes for a happy summer to all Kappa sisters.



PI—UNIVERSITY OF CALIFORNIA.

Active Members.

Elsa Lichtenberg, '03,	Alice Treanor, '05,
Edna Wemple, '03,	Elizabeth Reed, '05,
Lucile Graves, '03,	Varina Morrow, '05,
Leila Graves, not to graduate,	Edna Curtis, '06,
Sadie Alexander, not to graduate,	Mary Blossom, '06,
Irene Hazard, '04,	Louisiana Scott, '06,
Gertrude Davidson, '05,	Marion Morrow, '06,
Elsie Everson, '05,	Gladys Meyer, '06,
Elizabeth Mills, '03,	Edith Hatfield, '06,
Myrtle Sims, '05,	Anne Thacher, '06,
Bertha Holmes, '05,	Helen Greeley, '06.

Chapter:—Active members, 22; total number of members since founding of chapter, 83, including old Pi, 59 in new Pi alone; number of year's initiates, 9. Honors conferred by faculty: Degrees conferred—Elsa Lichtenberg, B. L.; Edna Wemple, B. S.; Lucile Graves, B. L.; Edna Wemple went on geological expedition under head of that department. Honors conferred by students: Edna Wemple, Prytanean Society, senior day committee; Lucile Graves, senior day committee; Gertrude Davidson, secretary of Y. W. C. A.;

Irene Hazard, Prytanean Society, member '04 *Blue and Gold* staff, junior day committee; Elizabeth Mills, junior day committee; Myrtle Sims, member '05 *Blue and Gold* staff, sophomore hop committee; Edna Curtis, class secretary; Anne Thacher, cast of charter day play.

University.—Number of faculty in collegiate department, 210; number of students in collegiate department, 2,670; number of women in collegiate department, 1,235. Fraternities in order of establishment, with number of active members in each: Men's—Zeta Psi, 16; Phi Delta Theta, 23; Chi Phi, 14; Delta Kappa Epsilon, 18; Beta Theta Pi, 15; Sigma Chi, 10; Phi Gamma Delta, 18; Sigma Nu, 27; Sigma Alpha Epsilon, 10; Chi Psi, 12; Kappa Alpha, 15; Delta Upsilon, 25; Delta Tau Delta, 20; Phi Kappa Psi, 14; Alpha Tau Omega, 13; Theta Delta Chi, 16; Phi Sigma Delta, 27; Kappa Sigma, 19; Psi Upsilon, 22; Phi Kappa Sigma, 16. Women's—Kappa Kappa Gamma, 22; Kappa Alpha Theta, 19; Gamma Phi Beta, 16; Delta Delta Delta, 27; Pi Beta Phi, 19; Alpha Phi, 16; Alpha Beta Sigma, 12; Chi Omega, 13.

College is now closed and the girls of Pi chapter are scattered over the State in their various homes, where they will rest after the strain of final examinations and be ready to return to us next year. We have lost three of our dear sisters this year by graduation and two others have left college. This is what we must expect each year, but still we can not help but feel somewhat sad at the loss of our seniors.

All of us enjoy the usual class day round of gayety when the men's fraternity houses are thrown open to their girl friends and when the seniors give their extravaganza. This year a double interest was added to the extravaganza on account of its being presented in our new amphitheatre, the generous gift of Mr. William R. Hearst. The amphitheatre, though not entirely finished, was enough so to allow thousands of people to assemble in it to see the extravaganza.

On commencement day we again assembled in this amphitheatre, where we had the great pleasure of seeing and hearing President Roosevelt. I think there was not one of those ten thousand people but felt inspired when they heard him.

Since you heard from us last time three of our girls have been married—Elise Wenzelburger, '02, to Mr. Adolph Granpner; Mabel Rucle, '00, to Mr. Robinson, and Alma Sherman, ex-'03, to Mr. Allen Chickering. We are all very happy with them and wish them many joys.

Pi sends greetings to her sisters and wishes them all a happy vacation.

BETA ETA—LELAND STANFORD JR. UNIVERSITY.

Active Members.

May Kimble,
Jane Evans,
Helen Downing,
Anita Perrin,
Jessie Barnard,
Zoe Larkins,
Katharine Gridley,

Ida Henzel,
Carrie Sappington,
Mercedes de Luna,
Margaret Burkhalter,
Ruby Kimble,
Bertha Henzel,
Ione Armstrong (aff. from Delta).

Chapter:—Active members, 14; total number of members since founding of chapter, 68; number of year's initiates, 3. Honors conferred by faculty: *None, ever*, at Stanford. Honors conferred by students: Jane Evans, senior prom committee; Mercedes de Luna, Jane Evans, on cast of characters for French play; Ida Henzel, junior prom committee; Ida Henzel, secretary woman's league; May Kimble, treasurer Pan-Hellenic association; Jessie Barnard, member executive committee Pan-Hellenic association; Anita Perrin, member of senior farce committee; Anita Perrin, assistant editor woman's edition of the *Daily Palo Alto*; member French club; Mercedes de Luna, member Spanish club; Bertha Henzel, member mandolin club.

University:—Number of faculty in collegiate department, 163; number of students in collegiate department, 1,483; number of women in collegiate department, 498. Fraternities in order of establishment with number of members in each: Men's—Zeta Psi, 22; Phi Delta Theta, 21; Phi Kappa Psi, 15; Sigma Nu, 20; Sigma Chi, 14; Sigma Alpha Epsilon, 25; Delta Tau Delta, 18; Beta Theta Pi, 21; Chi Psi, 14; Delta Upsilon, 26; Kappa Sigma, 25; Delta Kappa Epsilon, 17; Theta Delta Chi, 13. Women's—Kappa Alpha Theta, 26; Kappa Kappa Gamma, 14; Delta Gamma, 23; Alpha Phi, 16; Phi Gamma (local), 14.

Examinations are ended and with trunks packed we are waiting to see our three seniors, Helen Downing, May Kimble and Jane Evans receive their diplomas. Commencement week program, with the single exception of the senior farce, has been eliminated because of the typhoid fever epidemic, which has caused the death of nine students and the serious illness of forty others. Instead, the seniors have given their money, amounting to \$600, to the students' guild, the society for the aid of poor students. Many of the sick are now convalescent, and no further cases have developed since the closing of the dairy, the source of the infection.

On May 12 President Roosevelt, in a very practical talk, urged us to prevent the destruction of the great forests of Sequoia, Gigantia that are undoubtedly California's greatest endowment. We heartily endorse his thought.

Stanford was very successful in the April inter-collegiate field day. Norman Dole, a Beta Theta Pi here, broke the Pacific coast record in pole vaulting, and failed but $2\frac{3}{4}$ inches from breaking the world's record. The women, too, added a tennis victory, and that, with the winning of the inter-collegiate debate, makes for the Cardinal a very pleasant year's ending.

In Memoriam.

MRS. CHARLES F. CLARK.

The Alumnae and active members of Pi Chapter mourn the death of Mrs. Charles F. Clark, formerly Frankie Anderson. She was a member of old Pi Chapter, and although she lived at a distance from us, she nevertheless kept in touch with the Chapter so that each one of us felt that we knew her and had lost a friend when she died.

VARINA MORROW,
Cor. Sec. of Pi.



EDITORIAL.

The October "Key."

WE advise you to renew your subscriptions, for the October "KEY" is going to interest you all. The present number was edited at a distance of some 1100 miles from the printing office, and by a "green hand" who undertook to relieve the happy but busy young mother whom we all so love and congratulate—so please judge the "KEY" with mercy.

Miss Griffiths promises us an article on the "Chapter Roll"; the chapter-house articles for Beta Province will doubtless appear with many illustrations, and the October "KEY" will be altogether worthy of putting into the hands of next year's freshmen.

THE current issue of "THE KEY" is, in a very informal and partial way, a "Chapter-House number." Alpha Province has written and pictured to sister Kappas their cozy quarters. The accounts, as will be seen are just little "home-talks" and the pictures are quite unpretentious; yet the warmth and beauty of these glimpses of our Eastern Chapter-houses ought to be at once attractive and inspiring to every Kappa.

The summer is now before us, the time of sweet memories and gratitude for the year of companionship just ended, but still more the time of planning for next fall. Suppose we turn that gratitude, that planning into golden deeds of daring. Suppose we definitely decide on a Chapter-house!

WHY HAVE WE NOT MORE CHAPTER HOUSES?

In the Eastern chapters, it is quite evident that, as a rule, rooms must suffice. Rent is high in the large cities, the great majority of the girls live in their own homes, others, like Beta Alpha, Psi, and Gamma Rho are shut out of chapter-home life, by very reason of the complete home-life that dormitories such as those at Swarthmore, Cornell and Allegheny succeed in providing.

In the west we have many fine chapter-houses, both owned and rented, our Michigan, California and Colorado chapters are nicely

housed, our Wisconsin chapter possesses a lodge which we venture to say cannot be matched by any sorority-house in the country. In later issues we hope to show these homes.

But after all is said, ought we not to have more houses, or at least rooms more definitely and permanently dedicated to Kappa Kappa Gamma? The social memories that will gather within any four walls, where two or three of us are met together, are precious indeed; and Kappas, like the true mother, can make a "home" anywhere; but how about the archives, the library, the gavel and the altar? Furniture, group-pictures, banners and pillows are easily carted from pillar to post; but for our official possessions, permanent and worthy housing is certainly a necessity if we are to cultivate true reverence and love for them.

Like Beta Tau, we think it right to dedicate the best room with windows on three sides to the Kappa shrines.

The Alumnae must help. Anyone who has watched how the lodges of all great organizations are built and maintained will see at a glance that the lightest share of the burden must fall on the existing active chapter. Theirs must be the enthusiasm, the indomitable canvassing, the ceaseless pleading; but the older, wealthier alumnae must assume the buying of shares, the settling of the gas and water-plumbing bills, the securing of the land. Have we enough courage and loyalty for that? Well, I believe if we fix our minds on the idea that our archives need consecrated housing, that our future Kappa sisters must be far, far more able and wonderful than we, that to keep in the van of fraternity progress we *must* have permanent homes for chapters—we can do it!

Think what it will be, Alumnae sisters, to come back to your home chapter, once houseless, and be welcomed by a house-full of Kappas who will show you from attic to cellar with joy and pride, be welcomed best of all by the inscription over the door which *your* hands have helped to place there—"This place is forever dedicated to Kappa Kappa Gamma."

AND if not a permanent chapter-house, why not a summer house-party? Why not make it an annual affair, and in time purchase a cottage by some blue lake, or up in the mountains, or just outside the city, and there live and laugh together in that intimate, informal way which binds so surely and so easily?

Women are particularly suited to make this sort of thing succeed, they all know more or less about running a summer cottage, and there is no reason why Kappas should not bend their united efforts toward a Kappa cottage instead of scattering their energies at a dozen different summer resorts. How easy it would be to finish that Kappa pillow you started last year! How easy, to lay plans for next year's work when the chapter is together. Think it over.

Important Notice to New York Kappas.

Beta Epsilon expects to have an apartment in New York City next winter. Will Kappas who are to reside in New York and who would like to live with the Chapter send their names and addresses to Caroline Lexow, Nyack, New York.

Kappa Club of North Dakota.

A Kappa meeting of three, representing Theta, Eta and Beta Nu, was held in Larimore, North Dakota, in May. While the gathering was of an informal nature and Miss Steele, Mrs. Stoltze and Miss Twiss were even known to be talking all three at once, thereat, it was none the less a delightful occasion for the exiles on the prairie. Miss Steele is teaching in Larimore, Mrs. Stoltze resides in Edmore and Miss Twiss is Librarian at University, North Dakota. 'Tis an ill wind, even though it be a Dakota blizzard, that blows nobody good.

KAPPA DELL.

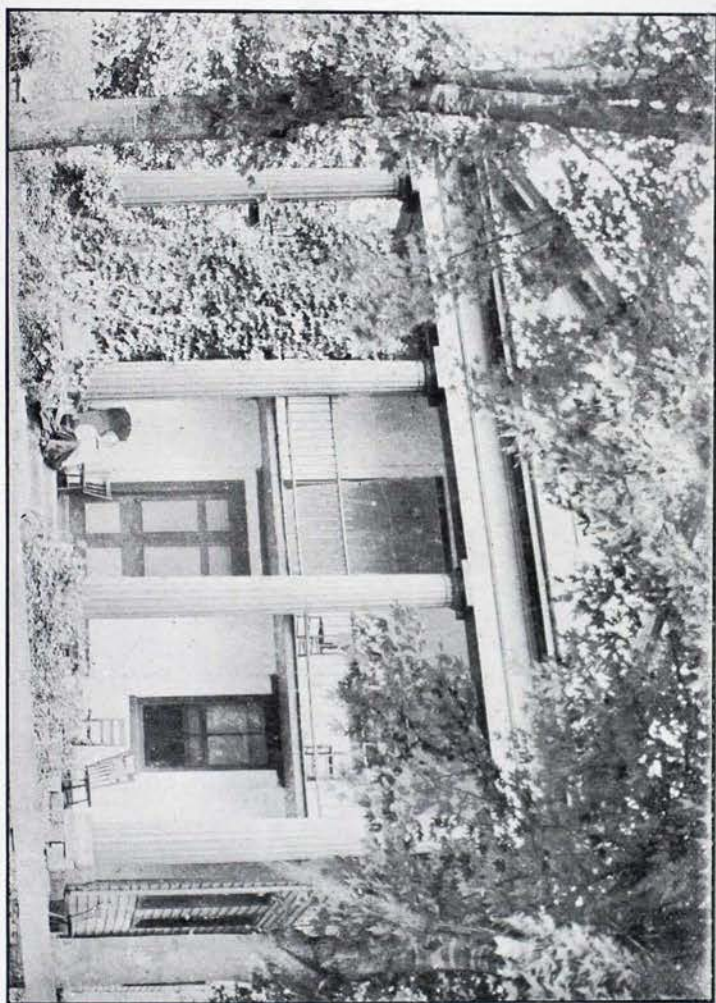
Kappa Dell, O, Kappa Dell !
 Shall we ever cease to tell
 All the stories, sweet with laughter,
 All the memories trooping after,
 Of the days in Kappa Dell?

Still with commencement echoes in our heart,
 Stole we away a little while apart
 Here 'mid the place of wood and field and stream
 We sang our songs and dreamt our Kappa dream,
 Flung out our pennants, lived and laughed together,
 All in the brightness of the glad June weather ;
 Swung in the hammocks, rode the old farm horses,
 Followed the brook in all its winding courses,
 Ran with the wind and climbed the hills so gayly,
 Stacked rooms by night and played the old jokes, daily ;
 Robbed the old garret of all its precious hoards,—
 Costumes and wigs,—and trod the mimic boards,
 While from the floor, where audience sat full lowly,
 Rang the applause or came the jeers unholy.
 This was our world ! Our spot of Kappa gladness.
 One more last week, e'er Senior's parting sadness.
 Dear Kappa Dell ! of thee I would be singing,
 Come Kappas all and let the call go ringing !

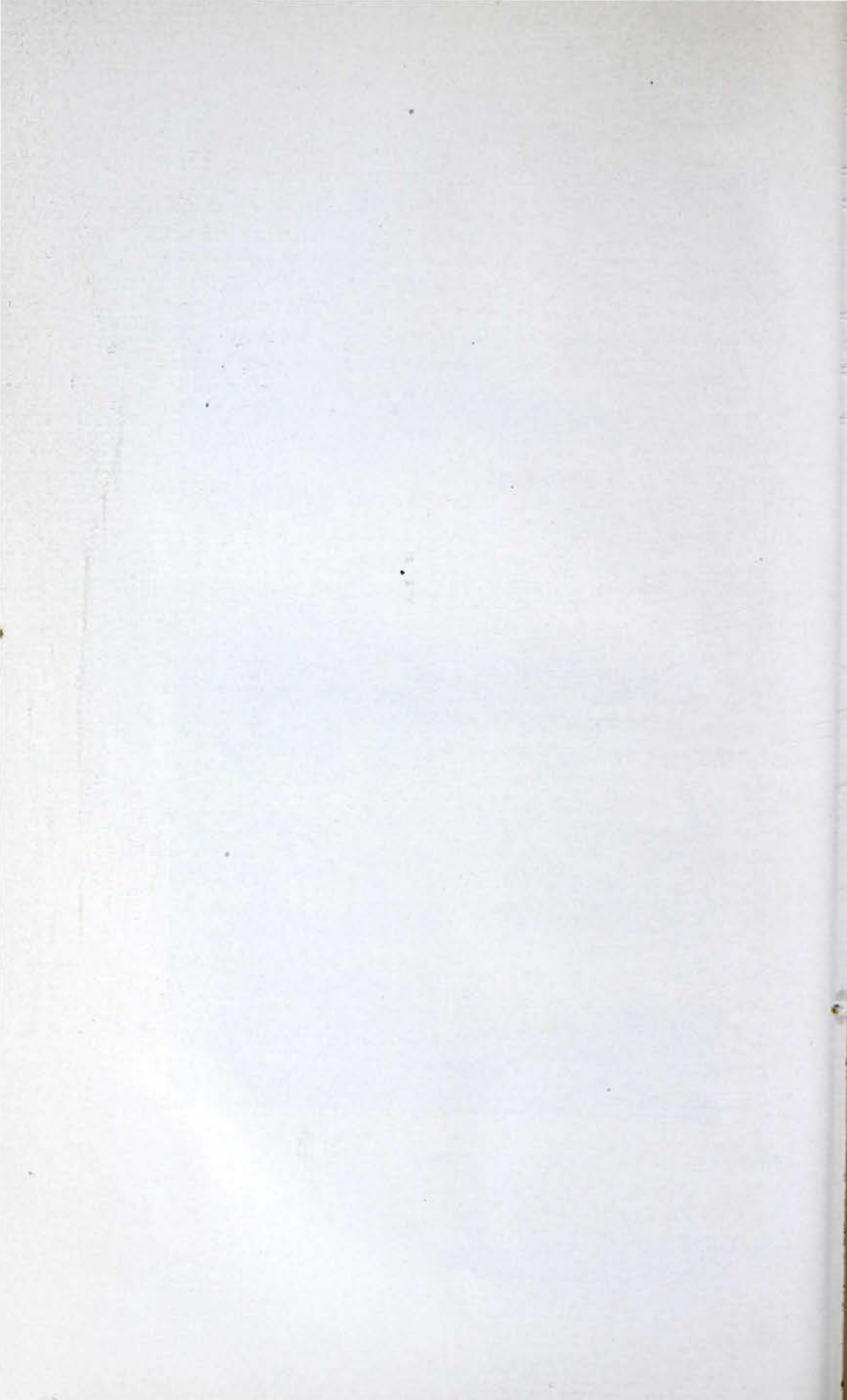
O. S. U. ! O. S. U. !
 Kappa Kappa Gamma,
 Beta Nu !

Kappa Dell ! O, Kappa Dell !
 Shall we ever cease to tell
 All the stories, sweet with laughter
 All the memories, trooping after
 Of the days in Kappa Dell?

—M. E. T.



LEWIS HOUSE, "KAPPA DELTA," CENTRAL COLLEGE, OHIO.



College and Fraternity Notes

By MARION EVANS TWISS, *Beta Nu*, '97.

CONVENTIONS.

Δ Γ.—Delta Gamma met for their thirteenth Annual Convention at Madison, Wisconsin, May 12th to 15th, and many social festivities were indulged in in connection with the meeting. Madison is a charming place for convention and the possibilities of pleasure there are almost innumerable. Kappa Kappa Gamma entertained for the delegates with an "At-Home" at the Kappa Lodge one afternoon.

A charter was granted to the University of Washington petitioners, and the place chosen for the next convention was Evanston, Ill., in 1905.

There were no changes in general fraternity policy, but there was a special measure passed which annuls for one chapter, the former ruling made with regard to membership in Omega Psi. Two years ago, Delta Gamma decided, as did the other leading sororities, to forbid membership in Omega Psi. But it seems that at the convention the delegates from Ann Arbor made a strong plea in favor of it, on account of the high regard in which their chapter of Omega Psi is held at Ann Arbor. The appealing chapter carried their point, with the understanding that within one year the chapter detach itself from the National Society of Omega Psi, and become a local one.

Delta Gamma expressed itself as favorable toward the inter-fraternity conference, but is not over-sanguine of great practical results there from. Alas! who of us can be?

—
K A Θ.—The fifteenth convention of Kappa Alpha Theta will be held in Minneapolis, August 20th. They are to have an Alumnae day, a feature which proved so interesting at our Kappa convention at Ann Arbor. The morning session of this day will be devoted to matters concerning alumnae chapters, the afternoon to "those activities demanding the attention of college women."

An amendment which will be voted on is one proposing to discriminate in legislative privilege between Active and Alumnae chapters.

—
Π Β Φ.—The Pi Beta Phi Convention is postponed from 1903 to 1904 in order to coincide with the St. Louis Exposition.

—
Z Ψ.—Zeta Psi held its convention this year at Charlottesville, Va., in April. The next convention goes to Minneapolis.

Σ X.—Detroit is the place chosen by Sigma Chi for the twenty-sixth Grand Chapter, to be held July 29-31st. The extension of the Endowment fund, for which the fraternity is justly famous, will be considered, several petitions for charters will be presented, and plans completed for the semi-centennial celebration.

The alumni chapter in Detroit will doubtless enliven the convention with considerable foot-ball enthusiasm, as they boast, among their number, Coach Yost of the "Point-a-minute" Michigan team and Hernstein, who has the greatest number of touchdowns to his credit.

Δ T Δ.—Delta Tau Delta holds its thirty-seventh Karnea August 26-28th at Cleveland.

B Θ Π.—The Beta Theta Pi Convention is at Put-in-Bay, July 16th. Petitioners from Purdue University will be there and plead the case of the purely technological institution.

Δ T Δ. The new president of De Pauw University is a member of Delta Tau Delta. De Pauw was at one time strongly antagonistic to fraternities.

Δ T Δ.—The following have been received at the "KEY" office: "The Arch Chapter of Delta Tau Delta Fraternity announces the installation of the Gamma Eta Chapter at Columbian University, Washington, D. C., Saturday, May 9th."

Σ X.—The Grand Council of the Sigma Chi Fraternity announces the installation of Tau Tau Chapter at Washington University, St. Louis, Mo., May 9th, 1903.

Θ Δ X.—A chapter of Theta Delta Chi was installed at Leland Stanford, Jr. University, April 24th, with a membership of twelve. This brings the number of fraternities there, up to thirteen, with four sororities.

Π B Φ.—Pi Beta Phi at Knox has absorbed Alpha Sigma Nu, a local which made its appearance a few weeks ago.

The project to have the Greek letter fraternities establish headquarters in the Temple of Fraternity to be erected at the St. Louis world's fair, in 1904, by an organization called the World's Fair Fraternal Building Association, after having been discussed and investigated by a number of St. Louis fraternity men for a period of several months, has been by them definitely abandoned on the ground of impracticability.—*Scroll of Phi Delta Theta.*

Φ K Ψ.—We are in receipt of an attractive, nay fascinating prospectus of the proposed Phi Kappa Psi Lodge at Estes Park, Colorado, which is to be opened up July 4th. The delights of this project appeal so strongly that we are inclined to believe with Mr. Van Cleve that "this enterprise will succeed, for the fellows who can get up such seductive circulars, will not let it fail." "French universities have neither papers, fraternities, athletics nor commencement exercises." Fancy, now!

Δ Y.—Delta Upsilon's November Convention meets this year in New York City.

Φ K Ψ.—Of the forty active chapters of Phi Kappa Psi, thirty occupy houses. Ten of these houses are owned by the chapters occupying them. The total membership of this fraternity is now 9,087.

We call attention to the following from the *Springfield Daily Republican* :

"An announcement detailing the foundation of a new senior class organization in Yale College was made at New Haven yesterday. A feature about it is that it is an open club, and not a secret society, and the most unusual detail in its scheme is its plan to take as many or as few members from each incoming senior class as is desired, with neither a minimum or maximum limit. The new organization, which will be known as the Elihu Club, has the official approval of the University authorities. The relation of the Elihu to the present senior societies is interesting in view of the fact that the members of the Elihu will be restricted to those students who are not members of any other senior society. The Elihu, however, is not regarded as a protest against the present senior societies, and as an evidence of this fact three graduates, representing the present societies, have accepted honorary elections. Graduates of distinction will receive elections."

Δ Y.—Delta Upsilon proposes to camp during July at Star Lake in the Adirondacks, and hopes soon to erect a permanent club-house there. The decree against fraternities issued by President Lewis of Adrian College, has been revoked. Those members of the faculty who opposed it soon came to realize that the support of many alumnae would be withdrawn from the college if the fraternity charters were revoked.

Φ M E.—Phi Mu Epsilon is the name of a new musical fraternity whose Alpha Chapter is at De Pauw and which appeared at Syracuse during March last.

✧ EXCHANGES. ✧

By MARION EVANS TWISS, *Beta Nu*, '97.

The *Record* of Sigma Alpha Epsilon prints the following regarding "The Chapter House Question":

"In the changing conditions of fraternity life, the possession of a chapter-house has somewhat suddenly ceased to be a luxury for the few. It has rapidly come to be one of the gauges, as well as one of the chief guarantees, of the permanence and stability of the chapter, and, in a larger sense, of the fraternity. To-day it is, perhaps, the great *sine qua non*. As Mr. William Raimond Baird, of the *Beta Theta Pi*, wrote not long ago, the time is soon coming 'when the charter of a chapter will hang by a very precarious thread unless it is twined around a building.' It seems safe to say, that within a very few years, the fraternity which finds itself without a complete housed chapter roll, will find itself, on the other hand, quite out of the running. Indications point to rapid growth along this line.

Several chapters, we know, have plans well in hand for entering a house at an early date. We hope that these, and others, will not defer the matter. In the general aspect of things, this seems to be an eminently suitable time—far more suitable, for example, than would be five years from now; and it is not such a difficult feat, after all. Almost any chapter with the will to do it, can accomplish it, though the start may be an humble one. Once squarely there, it is comparatively easy to stay. The start's the thing. It is a significant thing that few chapters, having once got into a house, have been obliged to return to humbler quarters. The chapters to-day without houses are those who have never thought themselves able to make the start."

The following chronicle and comment speak for themselves. We can only add that while any active opposition to High School Fraternities would certainly be in bad taste, still all the national fraternities have a very valid claim to take a firm stand on their own rights and to insist that their names be not appropriated. Those National fraternities which are incorporated are of course, legally protected, but for those of us who are not, there remains but to insist "*gently, but friendly.*"

"And now cometh confusion. *Beta Theta Pi* for November had the following Greek news item:

"Some of the 'prep' school Fraternities are developing wonderfully. Kappa Alpha Phi held a national convention recently, and Phi Gamma Epsilon has achieved the distinction of a litigation over the right of the educational authorities at Kansas City to forbid the High School students to join it. Alpha Phi proposes the publication of a quarterly journal."

"In January we received *Alpha Phi Quarterly*, 'published by The Alpha Phi Fraternity.' This is the magazine of a society with chapters in a dozen preparatory schools. If this society is to come into any prominence in the Greek world, especially through the fraternity magazines, it is liable to be confused with Alpha Phi, the sorority, and its magazine, *The Alpha Phi Quarterly*. The title pages of both magazines bear the inscription, 'published by the Alpha Phi Fraternity.'"—*Sigma Alpha Epsilon*.



Wright, Kay & Co.,

DETROIT, MICH.

Δ Δ Δ

JEWELERS TO
KAPPA KAPPA GAMMA.

Δ Δ Δ

We take pleasure in announcing our appointment as
Official Jewelers to the Kappa Kappa Gamma Fraternity.

OUR SPECIALTY . . .

is extra fine pearl goods.

SAMPLES . . .

will be sent upon application.

THE CITIZENS SAVINGS AND LOAN ASSOCIATION,

CLEVELAND, OHIO.

Capital and Surplus, - - - - \$ 2,000,000

Deposits, - - - - - \$12,000,000

Four per cent. interest paid on Savings
Accounts.

Loans made on Real Estate and Approved
Collateral Securities.

Pending completion of New Bank Building, temporary offices are at
Nos. 84 and 86 EUCLID AVENUE.

The Baker Art Gallery


LEADS THE WORLD IN FINE PHOTOGRAPHY.

FIVE GRAND PRIZES IN 1900.

Grand Prize at Paris Exposition.
Grand Prize at Weimer Photographers' Association of Germany.
Grand Portrait Prize, and Genre Prize, Photographers' Association of Ohio and Michigan, held at Put-in-Bay.
Genre Prize at the National Photographers' Association, held at Milwaukee.

We have been honored with more Grand Prizes than any other Gallery in America.

You are invited to visit the Gallery. State and High Sts., Columbus, O.

Have you a 

SONG BOOK

OF

Kappa Kappa Gamma?

NEW EDITION WITH MUSIC, \$1.25.

Send Orders to .

MRS. GUY WALKER,

249 W. 111th Street, - New York City.

CHARLES I. CLEGG,

SUCCESSOR TO

SIMONS BRO. & Co.,

OFFICIAL FRATERNITY JEWELERS,

616 CHESTNUT STREET.

PHILADELPHIA.

Silverware,

Cut Glass and

Art Objects.

College Pins,

Rings, Prizes

and Trophies.



OMO

DRESS SHIELDS.

Absolutely Odorless.

Absolutely Impervious.

Contain no Rubber.

EVERY PAIR GUARANTEED TO WEARER.

Send 25 Cents for Sample Pair.

The Omo Mfg. Co., - Middletown, Conn.

Fraternity Pins and

Novelties.

Send for Illustrations.

Diamonds,

Watches.

Jewelry.

D. L. AULD

Manufacturers of

FINE GRADE

Kappa Kappa Gamma Pins.

SEND FOR PRICE LIST.

D. L. AULD,

76 East Gay Street,

COLUMBUS, OHIO.

J. F. NEWMAN,

BADGE AND JEWELRY MANUFACTURER.

OFFICIAL FRATERNITY JEWELER.



REMOVAL NOTICE.

May 1st, 1903, we left our old office 19 John St., where we have been located for twenty-five years to enter larger and more attractive quarters better adapted to our extended business at

No. 11 JOHN ST., NEW YORK.

Catalogue of
Kappa Kappa Gamma
\$1.50.

Orders should be sent to _____

Mary J. Kull,
413 East Buffalo St., Ithaca, N. Y.

Die Stamping.

Plate and Letter Press Printing.

SPAHR & GLENN

Printers and Publishers

50 East Broad Street.

Columbus, Ohio.

Ohio State University,

=====COLUMBUS.=====

=====
Six Colleges well equipped and prepared to present
the best methods offered in modern education.
The advantages are offered to both sexes alike.
=====

The following list of departments will suggest the organization of the institution :

Agriculture,	Greek,
Agricultural Chemistry,	Horticulture and Forestry,
American History and Political Science,	Industrial Arts
Anatomy and Physiology,	Latin,
Architecture and Drawing,	Law,
Astronomy,	Mathematics,
Botany,	Mechanical Engineering,
Chemistry,	Metallurgy and Mineralogy,
Civil Engineering,	Military Science,
Clay Working and Ceramics,	Mine Engineering,
Domestic Science,	Pharmacy,
Economics and Sociology,	Philosophy,
Education,	Physical Education,
Electrical Engineering,	Physics,
English Literature,	Rhetoric and English Language,
European History,	Romance Languages,
Geology,	Veterinary Medicine,
Germanic Languages and Literature,	Zoology and Entomology,

=====
CATALOGUES WILL BE SENT UPON APPLICATION. After
examining the catalogue write for specific information to the President,

Dr. W. O. THOMPSON, Columbus.



.... THE

Hocking Valley

RAILWAY

Fast Time **New VESTIBULED Trains** Lowest Rates

3 HOURS--Columbus to Toledo ❁ ❁ ❁
❁ ❁ ❁ 4 Trains Daily. ❁ Parlor and Sleeping Cars.

The Direct **Detroit** and All.. **Michigan** and **Canada**
... Line to Points in

To **Chicago,** St. Paul, Omaha, Kansas City,
Denver, the West and Northwest.

TICKET AGENTS, *Hocking Valley, or connecting lines, will be glad to furnish full information on application. ❁ ❁*

W. H. FISHER, General Passenger Agent, Columbus, Ohio.





Pennants for all Colleges and Fraternities carried in stock. Official Kappa Kappa Gamma Pennants carried in stock. College and Fraternity Pillows.

SEND FOR CATALOGUES.



The Intercollegiate Bureau of Academic Costume

CHARTERED IN 1902.

COTRELL & LEONARD,
ALBANY, N. Y.

Makers of CAPS, GOWNS and HOODS
to the American Colleges and Universities.

Illustrated Bulletin, Samples, etc.,
upon request. ❀ ❀ ❀ ❀ ❀ ❀



RICH GOWNS FOR
ADVANCED DEGREES.

