

The Key

Official Organ of Kappa Kappa Gamma

Volume XXXIX

OCTOBER, 1922

Number 3

Board of Editors

Editor-in-chief—Rosalie B. Geer . . . 241 Washington Ave., Brooklyn, N. Y.
Editor's Deputy—Alice V. Doyé . . . 117 Berkeley Place Brooklyn, N. Y.
Alumnae Editor—Marion V. Ackley. . . . 890 Blaine, Detroit, Mich.
Department Editor—Mrs. Everett Warner . . . 508 E. Adams St., Muncie, Ind.
Exchange Editor—Eleanor Aldridge . . . 331 Adelphi St., Brooklyn, N. Y.
College Notes and "Hoots"—Helen Bower 8047 Woodward Ave., Detroit, Mich.
Business Manager—Executive Secretary, Della Lawrence, 3710 27th St., Bryan,
Tex.

CONTENTS

Kappa Konvention, Glacier.....	197
The Business Side of Convention.....	
..... <i>Frances Van Zandt Morgan</i>	205
National Council.....	209
Editorial Comment.....	215
Hoots	218
Chapter Letters.....	220
In Memoriam.....	239
The Alumnæ..... <i>Marion V. Ackley</i>	240
College News..... <i>Helen Bower</i>	257
Kappas in Book and Magazine..... <i>Lalah Randle Warner</i>	258
Students' Aid Fund	<i>Mrs. Richard H. Goddard</i> 259
History of K K G.....	261
Phi Beta Kappas, 1920-22.....	262
A Panhellenic House by 1923.....	262
A Message from the National President.....	266

Entered as second-class matter November 3, 1910, at the postoffice at Menasha, Wis., under the act of March 3, 1879.

Acceptance for mailing at special rate of postage provided for in section 1103, Act of October 3, 1917, authorized July 31, 1918.

Subscription price, one dollar per year.

Published four times a year in February, April, October, and December, by George Banta, Official Printer of Kappa Kappa Gamma, 450-454 Ahnaip Street, Menasha, Wisconsin.

Material intended for publication must reach the editor before the first of January, March, September, and November.

FRATERNITY DIRECTORY

NATIONAL COUNCIL

National President—MAY C. WHITING WESTERMANN (Mrs. Theodore), 11 Kraft Ave., Bronxville, N. Y.
National Vice-president—MARION V. ACKLEY, 890 Blaine, Detroit, Mich.
Executive Secretary—DELLA LAWRENCE, 3710 27th St., Bryan, Tex.
National Registrar—MARIE LEGHORN, 120 Prospect, Seattle, Wash.

CHAIRMEN

Historian—MRS. A. H. ROTH, 629 Myrtle St., Erie, Pa.
Chairman, Students' Aid Fund—CHARLOTTE POWELL GODDARD, (Mrs. Richard H.), 401 E. 11th Ave., Denver, Colo.
Custodian of the Badge—Executive Secretary.
Custodian of Songbook—CAROLYN MCGOWAN, 3258 Observatory Rd., Cincinnati, Ohio.

DEPUTIES

National President's Deputy—MINNIE ROYSE WALKER (Mrs. Guy Morrison), 924 West End Ave., New York, N. Y.
National Vice-president's Deputy—ALICE HINKSON, 8040 Second Blvd., Detroit, Mich.
Executive Secretary's Deputy—FRANCES VAN ZANDT MORGAN, (Mrs. Charles Lewalling), 102 Hill Crest, Forth Worth, Tex.
National Registrar's Deputy—MRS. W. F. Goodfellow, 4510 21st N. E. Seattle, Wash.
Editor's Deputy—ALICE V. DOYÉ, 117 Berkeley Place, Brooklyn, N. Y.
Kappa Kappa Gamma Panhellenic Delegate—ESTELLE KYLE KEMP (Mrs. Frank A., Jr.), 135 Grant St., Denver, Colo.
Chairman of the National Panhellenic Congress—MRS. ETHEL HAYWARD WESTON (Sigma Kappa), 20 Prospect Ave., Rumford, Me.

CORRESPONDING SECRETARIES

For time and place of meeting of chapters or alumnae associations, write to the secretaries.

ALPHA PROVINCE

President—EVELYN JENKINS, Ballardvale Road, Andover, Mass.
ADELPHI COLLEGE (Beta Sigma), Olive Holmes, 82 Lafayette Ave., Brooklyn, N. Y.
SWARTHMORE COLLEGE (Beta Iota), Lois Walker, Box 63, Swarthmore College, Swarthmore, Pa.
PENNSYLVANIA (Beta Alpha), Alice Rump, 3433 Walnut St., Philadelphia, Pa.
ALLEGHENY (Gamma Rho), Mary Alicia Tobin, Hulings Hall, Meadville, Pa.
PITTSBURGH (Gamma Epsilon), Phyllis T. Newlands, 1563 Clark St., Wilkinsburg, Pa.
WEST VIRGINIA (Beta Upsilon), Veta Lee Williams, 12 Brockway, Morgantown, W. Va.

BETA PROVINCE

President—MRS. WILLIAM BRAY, 745 Euclid Ave., Syracuse, N. Y.
BOSTON (Phi), Barbara V. Hamilton, 668 Boylston St., Boston, Mass.
ST. LAWRENCE (Beta Beta), Laura Ellen Spurr, Kappa Lodge, Canton, N. Y.
SYRACUSE (Beta Tau), Evelyn L. Pomeroy, 314 Van Rensselaer St., Syracuse, N. Y.
CORNELL (Psi), Marjorie K. Fellows, K K F House, 508 Thurston Ave., Ithaca, N. Y.
TORONTO (Beta Psi), Dorothy Shannon, 81 Charles St., W., Toronto, Ont., Can.

GAMMA PROVINCE

President—CLARE BROUSE, 94 Charlotte St., Akron, Ohio.
MUNICIPAL UNIVERSITY OF AKRON (Lambda), Aline Blackburn, Box 213, Akron, Ohio.
OHIO STATE (Beta Nu), Aidis North, Oxley Hall, O. S. U. Campus, Columbus, Ohio.
CINCINNATI (Beta Rho), Mary F. Turner, 1049 Purcell Ave., Price Hill, Cincinnati, Ohio.
KENTUCKY (Beta Chi), Elizabeth Hume, K K F House, Lexington, Ky.

DELTA PROVINCE

President—MRS. WILLIAM LOUDIN, 519 N. Walnut St., Bloomington, Ind.
PURDUE (Gamma Delta), Bernice L. Louman, K K F House, W. Lafayette, Ind.
DE PAUW (Iota), Caroline R. Hughes, Kappa House, Greencastle, Ind.
BUTLER (Mu), Josephine Brown, 3220 N. Pennsylvania St., Indianapolis, Ind.
INDIANA STATE (Delta), Alta Funkhouser, Kappa House, Bloomington, Ind.
MICHIGAN (Beta Delta), Harriet Ackley, 1204 Hill St., Ann Arbor, Mich.
ADRIAN (Xi), Dorcas Alverson, 926 Broad St., Adrian, Mich.
HILLSDALE (Kappa), Elsa E. Smith, Kappa House, Hillsdale, Mich.

EPSILON PROVINCE

President—MRS. HELEN GALE GEORGE, 2114 Sherman Ave., Evanston, Ill.
MINNESOTA (Chi), Charlotte Keyes, 329 Tenth Ave. S. E., Minneapolis, Minn.
WISCONSIN (Eta), Elizabeth Osius, 425 N. Park St., Madison, Wis.
NORTHWESTERN (Upsilon), Mary Howe, 1943 Orrington Ave., Evanston, Ill.
ILLINOIS WESLEYAN (Epsilon), Helen Niehaus, Kappa Hall, Illinois Wesleyan University, Bloomington, Ill.
ILLINOIS (Beta Lambda), Meryle Pratt, 212 Chalmers St., Champaign, Ill.

ZETA PROVINCE

President—MRS. AMES ROGERS, Abilene, Kan.
NEBRASKA (Sigma), Marguerite Fallon, 312 N. 14th St., Lincoln, Neb.
KANSAS STATE AGRICULTURAL COLLEGE (Gamma Alpha), Betty Hepler, 307 N. 16th St., Manhattan, Kan.
WASHINGTON (Gamma Iota), Martha Gerhardt, McMillan Hall, Washington University, St. Louis, Mo.
MISSOURI (Theta), Mildred Mac Intosh, 600 Rollins, Columbia, Mo.
DRAKE (Gamma Theta), Florence Blount, 1073 37th St., Des Moines, Ia.
IOWA (Beta Zeta), Janet B. Walker, Kappa House, Iowa City, Ia.

ETA PROVINCE

President—ALICE BURROWS, 1266 Clayton St., Denver, Colo.
COLORADO (Beta Mu), Virginia M. Bailey, 1221 University Ave., Boulder, Colo.
ARIZONA (Gamma Zeta), Katherine Dunn, 636 N. Park, Tucson, Ariz.
NEW MEXICO (Gamma Beta), Blanche Guley, University of New Mexico, Albuquerque, New Mexico.

THETA PROVINCE

President—MRS. G. T. MCNAIN, 1721 Grand Boulevard, Chickasha, Okla.
OKLAHOMA STATE (Beta Theta), Frances Burckhalter, Kappa House, Norman, Okla.
TEXAS (Beta Xi), Eleanor King, 705 W. 24th St., Austin, Tex.
TULANE (Beta Omicron), Mildred Daniel, 304 Newcomb Dormitory, New Orleans, La.

IOTA PROVINCE

President—DOROTHY DUNIWAY, Reed College, Portland, Ore.
WASHINGTON STATE (Beta Pi), Wynne Bragdon, 4504 18th Ave., N. E., Seattle, Wash.
MONTANA (Beta Phi), Dorothy C. Peterson, 817 Gerald Ave., Missoula, Mont.
IDAHO (Beta Kappa), Virginia McRae, K K I House, Moscow, Idaho.
WHITMAN (Gamma Gamma), Willena Long, 925 Isaacs Ave., Walla Walla, Wash.
WASHINGTON STATE COLLEGE (Gamma Eta), Selma McCroskey, 614 Campus Ave., Pullman, Wash.
OREGON (Beta Omega), Margaret Duniway, 754 13th Ave. E., Eugene, Ore.

KAPPA PROVINCE

President—MRS. A. C. WHITAKER, Stanford University, Cal.
CALIFORNIA (Pi), Wilda Claire Hershiser, 2725 Channing Way, Berkeley, Cal.
LELAND STANFORD (Beta Eta), Violet Andrews, Stanford University, Care of K K I, California.

ALUMNAE ASSOCIATIONS

ALPHA PROVINCE

Vice-President—MILDRED DOWNEY WING (Mrs. Luman B.), Dongan Hills, Staten Island, New York.
Boston Association—Dorothy J. Lyons, 372 Marlboro St., Boston, Mass.
New York Association—Frances Hall, 101 Jewett Ave., Jersey City, N. J.
Philadelphia Association—Mrs. Ronald J. McCarthy, Box 162, Devon, Pa.
Beta Iota Association—Elizabeth Hope Richardson, 1016 Clinton St., Philadelphia, Pa.
Beta Sigma Club—Ines Pando, 676 Sixth St., Brooklyn, N. Y.

BETA PROVINCE

Vice-President—MAY GLADYS BURNS.
Syracuse Association—Florence R. Knapp, 410 Wescott St., Syracuse, N. Y.
Western New York Association—Mrs. Henry J. Schiefer, Jr., 465 Harvard St., Rochester, N. Y.
St. Lawrence Association—Louise Reynolds, Canton, N. Y.
Toronto Club—Gladys Burns, 486 Jarvis, Toronto, Ont. Canada.

GAMMA PROVINCE

Vice-President—
Akron Association—Sara Bowman, 92 Oakdale Ave., Akron, Ohio.
Columbus Association—Clara O. Pierce, 909 Franklin Ave., Columbus, Ohio.

Cincinnati Association—Ruth Punshon, 2844 May St., Cincinnati, Ohio.
Cleveland Association—Mrs. John A. Williams, 1619 East 86th St., Cleveland, Ohio.
Pittsburgh Association—Louise Pennywitt, 7054 Willard St., Pittsburgh, Pa.
Morgantown Association—Beulah Posten, 3 Forest Ave., Morgantown, W. Va.
Toledo Association—Mrs. G. Russel Minor, 2346 Monroe St., Toledo, Ohio.

DELTA PROVINCE

Vice-President—EDITH HENDREN, 5432 University Ave., Indianapolis, Ind.
Indianapolis Association—Mrs. Hubert Hickam, 726 East 33rd St., Indianapolis, Ind.
Bloomington Indiana Association—Helen Osthaus, South Fess St., Bloomington, Ind.
South Bend Association—Mrs. Eli F. Seebirt, 634 North Lafayette St., South Bend, Ind.
Falls City Club—Clara Eaken, Jeffersonville, Ind.
Lafayette Association—Juanita M. Follett, 214 Lutz Ave., West Lafayette, Ind.
Muncie Association—Ruth Elizabeth Chaney, 26 Orchard Place, Muncie, Ind.
Bluffton Club—Stella V. Patton, 324 West South St., Bluffton, Ind.
Lexington Association—Mrs. Robert Hawkins, 121 Warren Court, Lexington, Ky.
Adrian Club—Mrs. Helen Friend Wagner, College Ave., Adrian, Mich.
Detroit Association—Mrs. Oscar L. Buhr, 2747 Northwestern Ave., Detroit, Mich.
Hillsdale Association—Mrs. Max Cater, Allen, Mich.

EPSILON PROVINCE

Vice-President—DELILAH JUDD.
Chicago Association—Katheryne C. Frankhauser, 5517 Winthrop Ave., Chicago, Ill.
North Shore Association—Mrs. G. F. Falley, 809 Simpson St., Evanston, Ill.
Champaign-Urbana Association—Mrs. Robert Graham, 1010 S. Busey Ave., Urbana, Ill.
Madison Association—Brynhilde J. Murphy, 310 Breese Terrace, Madison, Wis.
Milwaukee Association—Mrs. Lester Slocum, 781 Summit Ave., Milwaukee, Wis.
Bloomington, Ill. Association—Lucy Williams, 707 E. Grove St., Bloomington, Ill.
Minnesota Club—Mrs. James B. Lindsay, (President) 1909 Irving Ave., South Minneapolis, Minn.
Springfield Club—Mrs. C. E. Jenks, 615 S. Fifth St., Springfield, Ill.
Duluth—Mrs. Frederick Raymond, 2104 E. First St., Duluth, Minn.

ZETA PROVINCE

Vice-President—MRS. W. W. RUTTER, 1216 Mulvane, Topeka, Kan.
St. Louis Association—Mrs. Ed. V. Orr, 5 S. Taylor Ave., St. Louis, Mo.
Kansas City Association—Florence Carvin, City Hall, Independence, Mo.
Denver Association—Virginia Sinclair, 510 E. Colfax Ave., Harvard Hotel, Denver, Colo.
Cedar Rapids Association—Mrs. Horace Hedges, 825 S. 17th, Cedar Rapids, Iowa.
Iowa City Association—Mrs. W. O. Coast, 122 E. Church St., Iowa City, Iowa.
Tri City Club—Ethel Mc Kown, 104½ W. Second, Davenport, Iowa.
Lincoln Association—Mrs. Gayle V. Grubb, La Fayette Apartments, Lincoln, Neb.
Lawrence Club—Mrs. Guy W. Smith, 1428 Tennessee, Lawrence, Kan.
Omaha Association—Mrs. Walter Klopp, Glen Arlo Apartments, Omaha, Neb.
Manhattan Association—Mrs. Naudia D. Corby, 730 Leavenworth St., Manhattan, Kan.
Topeka Club—Mrs. Albert H. Winter, 1274 Plass Ave., Topeka, Kan.
Des Moines Association—Mrs. J. W. Cokenower, 1002 Forest Ave., Des Moines, Iowa.
Hutchinson Club—Bertha D. Buhm, 807 N. Main St., Hutchinson, Kan.
Albuquerque Association—Mrs. H. H. Ackerson, 113 S. Stanford Ave., Albuquerque, New Mexico.

ETA PROVINCE

Vice-President—RUTH BIRD, 636 N. Park Ave., Tucson, Ariz.
Dallas Association—Mrs. W. A. Dealey, 3524 Dickson Ave., Dallas, Tex.
Newcomb Club—Berthe M. Lathrop, 928 Broadway, New Orleans, La.
Austin Association—Mrs. Gillespie Stacy, 1007 Harwood Pl., Austin, Tex.
Oklahoma City Club—Wanda Ross, 1204 W. 32nd St., Oklahoma City, Okla.
Tulsa Association—Mrs. Owen W. Maloney, Jr., 423 E. 14th St., Tulsa, Okla.
Arkansas Association—Mrs. N. E. Lant, P. O. Box 191, Little Rock, Ark.

THETA PROVINCE

Vice-President—MARGARET MCLEOD.
Boise Association—Mrs. E. B. Sherman, 704 N. 18th, Boise, Idaho.
Montana Association—Mrs. Harold Lansing, 416 University Apartments, Missoula, Montana.
Washington Association—Mrs. Maurici Hicklin, 5231 20th Ave., N. E. Seattle, Wash.
Spokane Club—Helen Melheim, 801 W. 23rd Ave., Spokane, Wash.
Walla Walla Association—Mrs. Lloyd E. Evans, 11 N. Madison St., Walla Walla, Wash.
Portland Association—Hazel Young, 349 E. 20th St., Portland, Ore.
Eugene Association—Mrs. P. W. Janney, 1271 Emerald St., Eugene, Ore.

IOTA PROVINCE

Vice-President—ELEANOR BENNET, 2904 Piedmont Ave., Berkeley, Calif.
Los Angeles Association—Mrs. F. S. Murray, 468 S. Lake St., Los Angeles, Calif.
Pi Association—Mrs. H. H. Luff, 1700 Pearl St., Alameda, Calif.





TWENTY-FIFTH NATIONAL CONVENTION OF KAPPA KAPPA GAMMA FRATERNITY, GLACIER NATIONAL PARK, MONTANA
July Tenth to Fifteenth, 1922

THE KEY

VOLUME XXXIX

OCTOBER, 1922

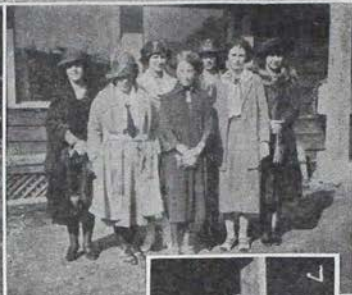
NUMBER 3

KAPPA KONVENTION, GLACIER

Montana offered to show the Kappas her peaks and passes, her snow and sunshine. So the clan gathered, from every state and a province beside; and now our memories of Kappa comradeship are silhouetted against a background of western splendor.

Europeans tell us that we Americans have no decent respect for distance. We count our miles by thousands and our time by split seconds. But more than one American college girl who travelled from her home to the western mountains this summer has had her sense of proportion shocked into being. Westerners may grow used to the vastness of their surroundings. We doubt that they do, because expressions indicative of a sense of size persist. The phrase, "biggest in the world," almost begins to lose its effect—almost, but not wholly, because the awed observer is incapable of doubt!

Across an apparently limitless extent of United States, trans-continental trains carried Kappas from every corner of the country. The most famous was the "Special," which touched at Minneapolis, a way-station for many, where something of a sub-convention was held. It has been impressed upon us by various persons, such as Scott Fitzgerald and Sinclair Lewis, that Minnesota is "incorrigibly middle-western," whatever that may mean. But even the above-mentioned realists could not resist a gleam of enthusiasm at the mention of Minneapolis. To us it seemed, frankly, charming. Its lakes and winding boulevards, its university and public parks, its general air of unostentatious comfort, and the hospitality of its people have left a happy im-



Council Members—Gertrude Wood, Della Lawrence, Estelle Kemp, Katherine Mullin

Betty Bogert Schofield,
Indianapolis Alumnae
Delegate

Margaret Grimes,
Beta Pi Delegate

Delegates

Marie Leghorn,
Ready to Start

Province Presidents

Kappas at Yellowstone Demon-
strating a Blackfeet Dance

Beta Province
Delegates

Delegates

Mrs. Roth and
Mrs. Loudon

More Delegates

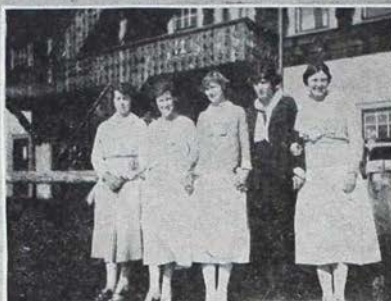
pression on our minds; and it is listed prominently under the heading, "Places to Revisit!"

But our destination was Glacier. Not strikes nor lost baggage, confused ticket agents nor distracted conductors, could deter us, nor could the delights of the journey detain us long. The great hotel near the Park entrance was the scene of many meetings. Acquaintances made during the rail journey became friendships on the fifty-mile "bus" ride to Many Glacier Hotel in the interior of the Park. For there is a kinship among those who have experienced new and startling sensations together. In those days we were "tenderfeet." Later we were to tread nonchalantly the paths of the mountain goat!

Mary Roberts Rinehart is our authority for the statement that Glacier Park is the wildest part of America. We are ready to accept this. We would also add that the scenery there is perfect of its kind. Anyone wishing to induce in us a white heat of rage has but to refer to the Rockies as "the American Alps." (Only one thing brings us nearer the verge of dementia—that is to hear the Hudson River termed "the American Rhine.")

"Many," as we learned to call "our hotel," is located on Lake McDermott and completely surrounded by imposing peaks. Glacier-fed, the lakes are chilly for swimming (we know this to be true!) but in color and clearness indescribably beautiful. Lake Josephine, where our picnic fire was reflected, as the faithful Beta Phis served sizzling bacon and fluffy marshmallows, while painted Blackfeet danced and chanted weirdly for our entertainment; Iceberg Lake, with its glistening floes, broken from the glacier edge, on which certain adventurous Kappas came near to floating away, while others contented themselves with exploring an abandoned mine; Cracker, Ptarmigan, and Grinnell—all these, within easy reach of the novice among riders or the more ambitious hikers, are vivid in our recollection.

For some, longer trips were possible. You remember the Triangle Trip, up the Swiftcurrent switchbacks and over the Continental Divide to Granite Park Chalets, where "the bear" obligingly appeared—and did you rise at dawn to "wrangle" the horses, left to graze during the night? You have not forgotten Heaven's Peak, with its snow mantle—nor the dome of Haystack Butte—nor the Gothic pines of the lower levels—nor the



Outgoing Council

Evelyn Jenkins,
Alpha Province President
Council Looking Pleasant,
Please

Phis at the Abandoned
Mine at Iceberg

Ervin Henge, Frances
Purdy and Ann Scudder

Some of the Beta Deltas
Ann Sweeney

Dorothy Gillis, Dorothy Lyons,
Ruth Stickney, Evelyn Gladney,
"Bill" Curtis, Evelyn Jenkins

Delegates—The New Game
in place of Authors. Identi-
tify your own delegate

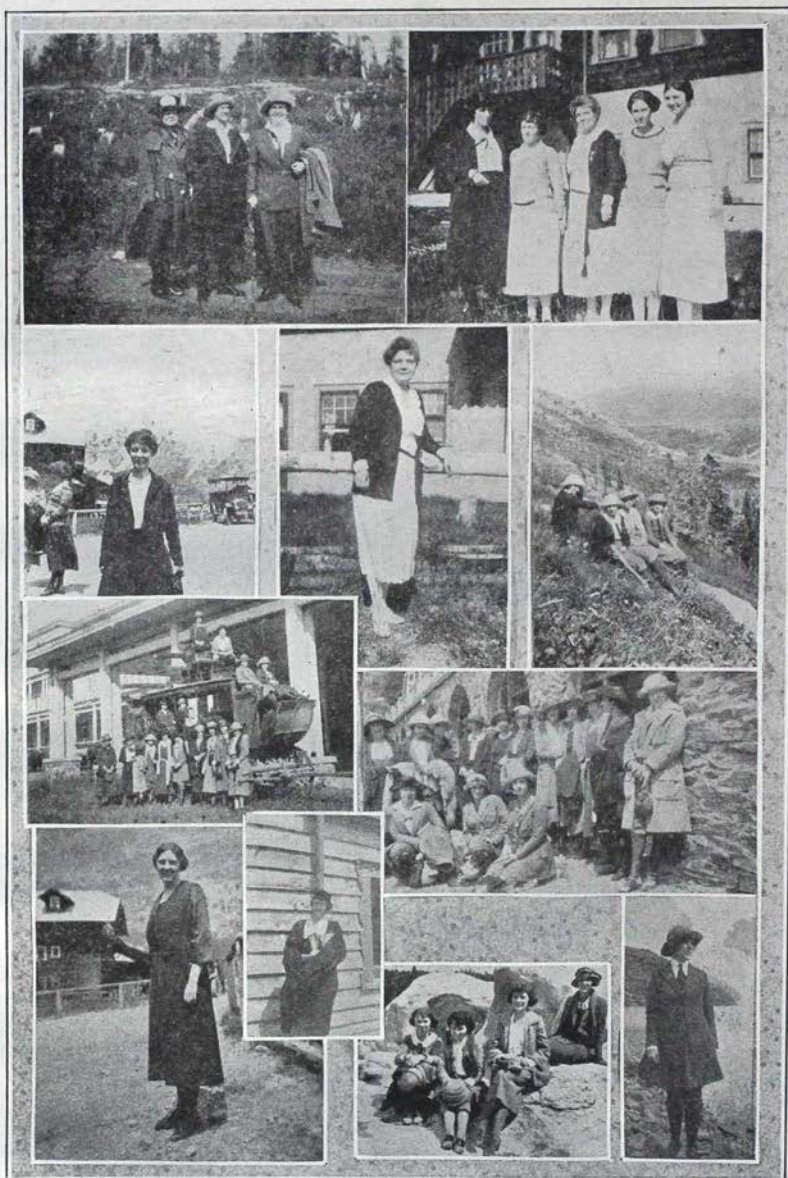
Texas Delegation
Hardy Adams, Della Law-
rence, Frances Morgan

Contrast—Marie Leghorn,
Miss Bennett, Mrs. God-
dard and Della Lawrence

arrival at Going-to-the-Sun, where the wind swept across Lake St. Mary. Didn't you enjoy the informality of the chalets, with their log-cabin architecture and their surprising "acoustics"? Perhaps you danced with "the boys"; certainly you photographed them, in their regalia of "chaps," boots, and spurs, sombreros, elk-skin shirts, and bright bandannas. Then you went back over Piegan, with its rocky stretches far above the timber line where the wild flowers had the brilliant coloring only found in the upper altitudes. You slid on glaciers, wearing at the same time, in your hat, flowers plucked at the edge of the snow, "as advertised," and drank from the mountain streams, which were often a succession of waterfalls. Some of you saw Gunsight Pass, and Sperry Glacier, and Lake MacDonald, over the Pacific slope, and explored the park to your own satisfaction.

And it is in this connection that we want to bring forward our recommendation for the future, that every chapter shall plan, whenever possible, to give its delegate at least three days in addition to the time assigned for convention. The diary of a delegate at Glacier, in some cases, would almost be limited to the facts mentioned in Frances Morgan's excellent account of the business of convention. And while business is the primary concern, it is also worth while to consider the value of Kappa companionship outside the hours of sessions. Convention brings together girls from distant points who might not otherwise have met, and gives, as nothing else can, a sense of our national unity. Give your delegate, who may not often voyage so far, greater opportunity for the comradeship of the trail and the campfire luncheon and evening under the stars, and she will learn more intimately of the life in other chapters than otherwise she could hope to do. At the same time, you will be increasing her efficiency; for a delegate with the knowledge of a few days' vacation ahead is better able to concentrate on the day's business than one who realizes that the close of convention means the end of her opportunity to see the new country which her friends are enjoying. Two years from this summer, when another convention is due, we hope to reiterate these words!

Of course, everyone, even to the busiest delegate, attended the evening affairs "for Kappa only." The reception to the Grand Council afforded everyone a chance to meet and know



Cold Weather for Mmes. Westermann,
Kolbe and Roth

Incoming Council

Cleora Wheeler The New National President Mu Went Climbing
The Loudon Party at Mammoth Hotel, The Loudon Party (Indiana) at
Yellowstone Going-to-the-Sun

Marie Leghorn, National Registrar
Gertrude Wood,
Grand Treasurer

At Yellowstone—Mildred The "Key" Editor
Porter, Kentucky; Rebecca at Iceberg
Martin, Ohio State; Nelle
Carey, Kansas; Mary Han-
son Peterson, Kentucky.

personally the national officers of the fraternity. Catherine Burnside Piper had sent in her place her capable deputy, Marie Leghorn, who follows her in the office of National Registrar. In the absence of Sarah Harris Rowe, the duties of presiding officer were divided between Estelle Kemp, and Katherine Mullin. Gertrude Wood, whose gentle efficiency has made us all value her, closed her administration as Grand Treasurer, becoming the last of that line, with the institution of the new central business office. Della Lawrence succeeds herself as Secretary, but in adding to that title the word "Executive" assumes all the multitude of duties implied.

The model initiation was in charge of Marie Leghorn, under the guidance of Cleora Wheeler, and for many who had never seen in their complete form all the initiation ceremonies of our fraternity, this occasion was peculiarly impressive. The aim to allow the chapters to develop their own initiative by introducing new features, while conforming primarily to the established ritual, has brought many additions which otherwise would have been unknown. But the opportunity to share in an initiation where members from every chapter participated was certainly an experience tending to bind us closer together. And for the three Montana pledges who were taken into the fraternity under these unusual circumstances, the experience must certainly have been a rare privilege.

Stunts and masquerade were combined, because of the scarcity of evenings in proportion to the number of events; and the night of July 12 was one to be remembered, both by Kappas and by the fascinated guests of the hotel, who found the plate-glass windows of our "Convention Hall" so convenient that they remained near them, while the scene indoors shifted like a kaleidoscope as Kappas in disguise danced and marched. "The Dangerous Sigma Nu" met his fate, and gay little Kappa Blues looked particularly cheerful despite their indigo tint. Was the laundry raided for blueing, as the kitchen was for the jangling utensils that adorned "Tin Lizzie"? White rabbits hopped sedately after their ballet leader, Simple Simon gaped and gawked, and Dr. Foster continued his journey Gloucesterward in spite of the frequent showers proceeding from a device hidden under the coat lapel. "The most beautiful costume" was an exquisite confection of

black and yellow; but undoubtedly the committee's choice was a difficult one. Two Grand Council members as twin Pierrots in pink and an ordinarily staid deputy as a "wild woman" stand out in our memory, surrounded by pirates brandishing bludgeons, Orientals, Ethiopians, children too young to be out of bed at such an hour, and the band of cowboys who entered in such a realistic manner that their arrival caused a decided stir!

As the end of convention drew near, we grew more regretful over the rapid passage of time. True, we were not overcome by grief to such an extent that our hair actually turned white. The solicitous guest in the hotel lobby who saw an early Kappa (probably a committee member!) passing through on her way to the banquet, and inquired, "My dear! Were you ill long?" knew not the quantity of cornstarch required to produce that snowy effect! Strange how that one touch of the spirit of other days transforms an occasion—or is it that, as we stand in the candle-light, hands joined to form one great unbroken circle, there comes to us the sense of what this unity of feeling and of purpose has meant to other women for half a century gone by and will mean to more than we can number in the years to come? At our banquet, all that convention can give culminates. The entertainment by girls of the hostess chapter, the music, the toasts (in which this time we followed the prospector as he sought and found the true gold in Kappa)—all these are typical of the enjoyment we share, and under it all is the realization of the bond of understanding that joins us all, East and West, North and South, as we press on together toward the ideal of Kappa womanhood.

Convention is a matter of a week. But it does not end there. Its effects radiate in circles of unlimited possibilities. They will remain with every one who was present and these in turn will pass them to every one with whom they come in contact. And when the next convention comes, we hope that all who cherish recollections of the last or those preceding it, together with all who have the experience of their first convention still before them, will be there!

THE BUSINESS SIDE OF CONVENTION

Frances Van Zandt Morgan is the deputy of the Executive Secretary—the national officer who occupies the strenuous position of “Lord High Everything Else!” She is in a position to tell you authoritatively of the work accomplished at the sessions of convention, and what it promises for the future.

Of course all of you will read the convention minutes, if you haven't already done so, and you have vague notions about what happened during those busy days in Glacier Park. But minutes never tell the things you want to know, the reasons why. Whenever you see that word, “Discussion,” you merely look bored and read a little faster to find out what happened. So I shall try to tell you as much of those discussions and of the reasons for the things we did, as I can.

First of all, we are interested in the Big Change, the establishing of an Executive Secretary who has an Executive Office. An organization as large as ours needs efficient central headquarters, and we are proud to have joined with other big organizations that have found it best to have such an office.

This will bring about changes in our methods. Under our old plan we wasted much time and many stamps before we finally found out what everyone wanted. Now the Executive Secretary will handle all Kappa business directly. She will have the duties of the Grand Secretary, Grand Treasurer, Custodian of the Badge, Business Manager of THE KEY, and Director of the Catalogue. Aren't you glad you aren't the Executive Secretary? In this way our other officers will be relieved of much of their work and will be able to do more visiting. Everybody get ready for company! When it came to choosing our Executive Secretary we naturally turned to the one in closest touch with the detail work of the fraternity and Della Lawrence was elected. So our Executive Office is to be at 3710 27th St., Bryan, Tex.

Next comes the Endowment Fund. So far we have not gone far beyond the mere voting to establish one, but that is a long step forward. Are you wondering what an Endowment Fund

is? It may mean all sorts of things, and we hope ours will eventually. The idea is to create a fund which will help us in maintaining our Executive Office, and which will cover any national emergency, which will, in short, assure us a sound financial basis in the future. When the fund shall have grown great enough we hope to be able to make loans to chapters for house-building and furnishing purposes. And then after that—we may do *anything*! Many other national fraternities have established such funds, which they have raised in different ways. Irene Farnum Conrad, of Upsilon, will be telling you soon how our fund will be raised. Unless it has grown by leaps and bounds in this last month, it consists of little more than the Sinking Fund and a check sent to buy flowers for the Council members. The flowers were not thought to be in keeping with our new policy of simplicity and economy so the check was turned over to the Endowment Fund—the first gift.

The Students' Aid Fund is not to be a part of the Endowment Fund, but will be carried on as it has been, except that we hope it will become larger, so that many more girls may use it. Have you read the report of the Chairman of the Students' Aid Fund? It is a wonderful report even on paper, but I wish that all of you could have heard Charlotte Goddard give it. She manages to give you a personal interest in it that makes you want to work hard and add your bit.

Nor have we overlooked our French babies at Bellevue-Meudon. Katherine Mullin told us of her visit to Madame Fishbacher and the *Dispensaire*, and each of us wished we might have been there. There is now enough money on hand in the Bellevue-Meudon Fund to run the dispensary until it can be turned over to the Femmes de France. But even when the work can be carried on without us, let us never forget Madame Fishbacher and her *Dispensaire*, and when we have an abundance let us share it with the French babies, as Dorothy Canfield Fisher urged in her letter.

Scholarship is an important point and we are working hard to raise our standing. The scholarship report showed that several chapters have accomplished really remarkable scholastic feats this last year, that others are working hard to hold high places, and that still others need to work harder. The chapter reports gave some interesting methods used by different chapters to bring

about higher standing. If all our intentions are carried out, the list of Phi Beta Kappas should grow amazingly.

And speaking of chapter reports, if all of your alumnae could have heard them, you would certainly feel encouraged and proud. We seem to hold the majority of important college offices throughout the country, we lead nearly all the dances; in fact, we seem to do all the things worth doing! I wonder whether all the other fraternities do the same?

We have several new publications, too. There's the new song-book, with the old favorites and as many new ones as our Custodian could get her hands on. You'd better order a book even if you haven't a piano, so you won't feel out-of-date when they start singing at the next banquet. Then the History! We've been hearing about it for a long time and now it's almost ready for publication. Unless something goes wrong we can look for it about the first of the year. Be sure to include one in the family budget, for the outline the Historian gave at convention was keenly interesting, and that was just a sample of what you'll find in the book!

Of course we spent much time in routine work—the committee work, the reports, etc.—and we had a splendid time besides. I have tried to bring out here the new things we have undertaken, and the things for which we must work the hardest. There are so many of them that every one of us must do what she can. When Estelle Kyle Kemp called convention to order she chose "National Unity" as the key words, and you will see that all the things we did and all the things we planned work toward this end.

FRANCES VAN ZANDT MORGAN.



MRS. THEODORE WESTERMANN
National President

NATIONAL COUNCIL

Three members of the new Council will be officially introduced to you in this issue of THE KEY and two others in the next. Each of them has been serving the fraternity in some capacity. But you are to know them better now and this is the beginning of that acquaintance for some of you, and the refreshing of memory for others.

MAY C. WHITING WESTERMANN

National President

To few women comes the experience of being elected a second time to an office held twenty years before; but this is the case with Mrs. Theodore Westermann, who has been called to resume the leadership of our fraternity.

Born in Missouri, she lived from childhood in Nebraska, and was graduated with a fellowship and Phi Beta Kappa membership from the university of that state. Six years of the teaching of English literature at the university preceded the eventful year of her marriage and her election as Grand President of Kappa Kappa Gamma.

Mrs. Westermann says that her fraternity career is an illustration of what a convention may do. In 1896, just after her graduation, she attended the convention at Northwestern, and was appointed assistant marshal of the following convention. Then she was chosen as the deputy of the Grand Treasurer (who was busy with matrimonial plans), and carried on the entire work of that office, until at the convention of 1900 she was elected Grand Secretary, and in 1902, Grand President. Busy years followed, filled with activities outside the fraternity. But in 1918, Mrs. Westermann accepted the duties of Custodian of the Badge, which took her to convention at Mackinac. And now she is once more in the center of Kappa affairs.

In Bronxville, where she now makes her home, with her husband and twelve-year-old son, her life is full and varied. In view of her active interest in the Nebraska Society of New York and in the church, civic club, literary club, and Parent-Teacher Association of her own community, beside her member-



DELLA LAWRENCE
Executive Secretary

ship in national organizations, such as the Daughters of the American Revolution, Daughters of Founders and Patriots of America, and the Society of Mayflower Descendants, it is worthy of note that she says of her fraternity office: "I feel that it offers a larger opportunity for service than all the things which I am doing put together."

Mrs. Westermann's admitted hobby is genealogy, but her predilection for the past is equaled by her enthusiasm for young people and the future. During the twelve years in St. Louis that followed her marriage, she worked with girls, and for them. It is the essentially maternal side of her nature that forms the perfect balance for her strong executive ability.

Many of you have known Mrs. Westermann in one or another of the capacities in which she has served; but this brief account will give to those who are still to meet her some knowledge of the equipment and temperament of our new president.

DELLA LAWRENCE

Executive Secretary

You remember what Emerson said about the path that is always made to the house of the man who could make a better mouse-trap than his fellowmen. We have discovered that this is also true "in reverse" for Della Lawrence, "bohn and raised" in Bryan, Texas, a town from which it takes you a day and a half in any direction even to get out of Texas, made a path for herself, came out of interior Texas, and is now a national figure in the college world, and the first Kappa to hold the new office of Executive Secretary, the "Central Office" of our fraternity.

And this is no reflection on Bryan. We mean to say that our addition to Mr. Emerson's famous thought is that a person of superior qualifications always gets away from the local interests of his old home town, whether it be London, Paris, New York, or Bryan.

In 1918 Miss Lawrence was graduated from Texas University and went to Washington as a war worker. So great was her zeal to join the army of women doing their part in the Government that she left Austin before her graduation, but her degree was sent to her in Washington. She lived in the Kappa house there and stood out as one of the most capable girls and soon was made house-manager.



MARION V. ACKLEY
National Vice-president

Washington was then THE KEY's headquarters, and Miss Lawrence was chosen to be the editor's deputy, aided her greatly in getting out the war-time numbers of THE KEY, and went in the editor's place to Council Session in 1919.

At convention in 1920 at Mackinac Island she was elected Grand Secretary (we used the word "Grand" in those days), and she quickly and intelligently grasped all the details of that work. At our last convention, when the new office of Executive Secretary was created, she was unanimously chosen for it. Her qualifications were that she had had a course in business administration at Texas University, a year as a secretary in Washington, and two years as National Secretary of the fraternity. Besides these she has great personal charm and is always much admired and liked when she visits chapters. Her work now includes the former work of the Secretary, the Treasurer, the Business Manager of THE KEY, the Custodian of the Badge. She has fitted up a room in her home in Bryan as an up-to-date office, and has started on her new and complicated work with great enthusiasm.

K. T. M.

MARION ACKLEY

National Vice-President

Marion Ackley, formally known in Kappa as "the new National Vice-president," hasn't shown any desire to be a Doctor Johnson in all the never-mind-how-many years I have known her; but, she has acquired a Boswell. Only today, looking over souvenirs of the 1920 convention, of which she was marshal, I read again the bit "About Marion Ackley" which Bozzy had done for the convention *Hoot*, and which others who were at Mackinac may find, to refresh their pleasant recollections of Marion.

The principal thing about Marion, which speaks well for her and promises better for Kappa, is that she isn't the talkative kind of person whose brilliancy is all on the surface. Marion has more of the judicial, legislative mind. She isn't always shouting "Let's go," and indulging in futile effervescence. Rather the ideas generate in the good brain behind those steady brown eyes; the plan formulates and the brown eyes sparkle just a glint or two; the details of the plan progress—and perhaps then, but then only, Marion talks about it. Moreover, she has the essential

perseverance and dignity to bring an undertaking to its proper and ultimate consummation.

She has lived practically all her life in Detroit, where she went through the elementary and high schools and on to the state university at Ann Arbor. Her training in Kappa has been thorough and her devotion absolute, so that after she was graduated in 1919 it was natural that time should presently find her secretary of the Beta Delta association, president of the Detroit alumnae association, and later president of Epsilon Province. Beta Delta is proud to have her who went to Glacier as a province president return as alumnae officer for the fraternity at large.

Father, mother, brother, and a young Kappa sister are the other members of the Ackley family, all justly appreciative of Marion. There is an apartment in town and a cozy summer cottage on Lake St. Clair where Kappas are always welcome; and there is the Ford sedan, and the cat, Patsy. Marion plays golf and doesn't lose many balls. In fact, she's fond of everything a regular girl should enjoy; and she couldn't think of anything she didn't like when I asked her.

If this seems to be a "terribly intimate portrait," please, all good Kappa sisters, who may have the privilege of a visit from Marion in the next two years, remember that it has to be rather a fine sort of a person who can stand intimate scrutiny and still test "true blue."

H. C. B.

CORRECTION

"Please make these changes in the blue pamphlets which Mr. Banta gave to the chapters at Convention:

On page 28, in next to last line of song, the word should be *sighing*, not *signing*.

On page 30, last line of first verse, wording should be "that I pledged myself to thee."

EDITORIAL COMMENT

CHANGES

At Katherine Mullin's statement that much of her time in the near future would be spent in travel, and that for this reason she would be unable to continue to edit *THE KEY*, as she has done for the past eight years, a certain degree of gloom descended upon the members of her chapter. Not that we begrudged her the chance "for to behold this world so wide." We know of no one who finds more genuine enjoyment in traveling or who brings home more of interest from her journeys—not merely of a material nature, despite that Paris hat, but along the line of anecdote and reminiscence. To hear Katherine recount her experiences is second only to having been present on the occasion! And as time goes on, much of this material will find its way into *THE KEY*—possibly more than if Katherine were spending her days revising lists of corresponding secretaries. We hope that she will prove a sort of "Travel Editor," whose whereabouts will always be the foreign office of the publication. But we shall miss her, personally and officially.

THE KEY when it came into her hands had not assumed its present proportions. She has done much to build it up into the form to which you are accustomed. And in that form it will continue during "this administration," with only such changes as are recommended by the Committee on *KEY* Policy or made necessary by circumstances.

Among the suggestions of the committee are several for new departments: Students' Aid Fund, Endowment Fund, and Vocational Guidance. It has not been possible to start the latter two with this issue, but they will appear later.

We hope that any one having ideas concerning these departments, or any suggestions to offer concerning material for *THE KEY*, will send them to the editor. Don't wait for a convenient moment to write a long letter, but whenever the thought occurs, make a note of it and send it in! The committee recommends: That correspondents in active chapters and alumnae associations notify the editor when they hear of members who are doing im-

portant work, traveling in interesting countries, or whose stories would make good reading in *THE KEY*. We would like to extend this to include not only correspondents but every member of the fraternity. This is your magazine—help us to make it interesting.

The same need for your co-operation exists in regard to corrections. We know that in this issue there are many inaccuracies. For instance, the list of *alumnæ* secretaries has not been arranged according to the new division of the chapters into provinces, and in some cases the names of secretaries of active chapters are not those of the present officers. There are undoubtedly many other errors and we ask you to call our attention to them.

It seems advisable, too, to have the names appearing in the directory written in a uniform way. In the case of married women, the form: "Mary Smith Brown (Mrs. John A.)" has been suggested, and wherever possible this has been used. If there are objections to this usage, may we not hear of them? And will those who do not object please give their names in this form?

The editor wishes to thank all those who helped in bringing out this issue of *THE KEY*—contributors whose names may or may not appear, and all who sent photographs. We wish we might have used all the material sent in, particularly the pictures—but the Executive Secretary would have something to say upon seeing the bill! Is it too much to hope that this abundance of good things will continue and "that all Kappas will take more of a personal interest in *THE KEY* and feel responsible for aiding the staff in getting material"? We hope rather that this is a promise of plenty and that every issue will be a crowded one, with Kappa news coming from every direction!

CHAPTER LETTERS

In the binding together of a large and scattered organization such as Kappa Kappa Gamma, there are a few things that are essentially powerful, and foremost among them we should, in all probability, place Convention. But surely, no one would hesitate in assigning second place to *THE KEY*, primarily in its department of chapter letters. These letters form the one definite and regular tie that binds the chapter to the national organization,

and it is their regularity that is their most important feature. The letters serve also as a point of connection between the active chapter and its alumnæ. It is a keen disappointment for an alumna to find the name of her chapter only under the head of "Chapter Letters Missing."

It has been suggested that a very material fine be placed upon any chapter failing to send in a letter on the date when it is due, as the only means of making an impression upon the delinquent KEY correspondent. This measure may be resorted to at very short notice if necessary.

We are reprinting below the rules to which it is essential every chapter letter should conform.

RULES FOR "KEY" CORRESPONDENTS

1. Chapter letters are due to reach the editor on or before the first of September, November, January, and April.
2. Letters must be typed, with double spacing to allow for corrections.
3. Use only one side of the paper.
4. Letters should bear the signatures of the correspondent and the president and corresponding secretary of the chapter.
5. Do not send special delivery letters or telegrams.
6. Write to the point. Avoid the use of extravagant expressions and remember that "Type is money." On the other hand, don't omit to tell the unusual and original things that will interest the fraternity at large.
7. Be sparing in the use of capitals. Write names of officers and classes, etc., with small letters.
8. Write dates in this form: Jan. 2, Sept. 15.
9. The use of the word "rush" in its slang sense is contrary to fraternity policy.
10. Remember that your chapter and your fraternity are judged by the letters you write.



HAS ANYONE ELSE A BRIGHT THOUGHT?

For so many weeks now that we are ashamed to think of the exact number, we have had in our possession a "Hoot" sent in by Mrs. George L. Gugle, B. N. Consequently it "rides at the top of the column" this time to show our appreciation and to encourage other people to send along contributions which, we assure you, will be gratefully received. Here's the story:

The young son of a Kappa mother wrote from his school a glowing account of an Easter party, in which he made especial note of the "pretty" girls attending. Hoping to subdue somewhat his wild enthusiasm regarding the "pretty" girls, his mother advised him to remember that "beauty is only skin deep." Promptly came the reply, "But, mother, remember the painter's ad—'Save the surface and you save all.'"

"What's in a name?" thought the educated stage-driver at Glacier who assigned places in the motor bus and called loudly for "Mrs. Froth."

ADD TO THE FIVE-FOOT SHELF

A Kansas City newspaper suggests that the American woman who said her son had been in service in La Belle, France, should correspond with the London writer who recently spoke of Emeritus Eliot, president of Harvard.

How
many times
in your
young life
has it
been that
when you were wearing a beloved pin shaped
something like this peroration, some curious
soul came up to you and
facetiously asked
you a question about it?

What is that the key of? 15 times
(This is first entrant in the "better English" sweepstakes.)

Is that your latch-key? 20 times.

Is that the key to your house? 100 times.

IS THAT THE KEY TO YOUR HEART? 125,071 times.

CONVENTION CHRONOLOGY

Beta Tau alumna finds that railroad company has sold her berth to Phi delegate.

Eastern delegates visit Minneapolis: Westerners "see America first" en route through the Rockies.

Tenderfeet thrill at sight of high mountains.

Tenderfeet thrill at sight of real glaciers, as per announcements.

Tenderfeet thrill at sight of rippling rills.

Tenderfeet thrill at sight of real Indians.

Grand Council greets arriving multitude.

Convention begins.

Knickerbockers of khaki and tweed donned by mountain-climbing visitors.

At business session, voice is heard over partition ordering "Chocolate Malte."

Telegram is read from Grand Hotel, Mackinac Island.

Weary delegate dozes during discussion and wakens to imagine herself in the Land of Cherry Blossoms.

Convention adjourns in sections to shores of Lake Josephine.

Enterprising sisters entertain with piscatorial breakfast.

Equestriennes continue to take their meals from mantel shelf.

Delegates fail to thrill at sight of high mountains.

Ditto for glaciers, rippling rills, and real Indians.

Convention hears "Coca-cola with lemon" over the partition for the last time.

Members of Grand Council take fifteen minutes to regard beautiful scenery before returning to their homes.

CHAPTER LETTERS

Send letters to Alice V. Doyé, 117 Berkeley Place, Brooklyn, N. Y.

Chapter letters missing:

Beta Sigma

Beta Iota

Psi

Lambda

Beta Mu

Iota

Xi

Chi

Upsilon

Gamma Alpha

Omega

Theta

Beta Zeta

Beta Omicron

Beta Kappa

Gamma Eta

Chapter letters not typed:

Beta Alpha

Beta Rho

Beta Chi

Gamma Delta

Mu

Beta Lambda

Gamma Theta

Beta Theta

Pi

GAMMA RHO

Allegheny College

We hope you all have had as successful a year as Gamma Rho. The culmination of the school work showed a complete refinishing of our rooms. We wish especially to thank as loyal a Kappa as Gail Richmond who has stolen many of her precious moments to give us novel and pleasing ideas for our rooms.

The living-room has been changed from a stiff parlor to cozy club-rooms, with the newest of striped silk curtains, soft grays and ivory in woodwork and paper, and "comfy" divans and black wicker.

With new rooms, we must show ourselves worthy of them, and the girls have all done their share, either in fraternity, studies, or activities. I am unable to name those excelling in work of the fraternity and studies, with the exception of one, but as the activities are printed in our school yearbook they can be catalogued.

Louise Weckerly received Phi Beta Kappa, and also second prize for her senior thesis. Louise promises to be worthy of her honors and is now working "for humanity" in the hospital at Washington, D. C.

Alice Grenelle is president of the Y. W. C. A. for the coming year and both Ruth McCafferty and Ruth Ling hold offices. "Mid" Stoner, gave the farewell address to the Chapel this spring. "Sally" McQuiston and Ruth Ling made Klee-O-Kleet, our dramatic club. Linnie Loudon and

"Sally" McQuiston are on Student Government. Geane Bowser is tennis manager. Ruth Ling is a member of Quill Club and Mildred Hileman of Glee Club. "Sally" McQuiston is on the board of the year book, and Alicia Tobin, both *Literary Monthly* and yearbook.

And now, we are celebrating with a two weeks' camp on Lake Erie, where we expect to get our heads together and hear "Ginger" Grenelle tell of the wonderful trip to convention.

SARA MCQUISTON.

GAMMA EPSILON

University of Pittsburgh

Summer is almost over and it will soon be time to get our "little sisters" in line—get them registered—get ourselves registered—pledge all the eligible freshmen—then settle down to the customary routine of another school year.

This year is to be a splendid year—one of many achievements and advances, thanks to all the glowing reports from the wonderful convention at Glacier Park and all the suggestions and new ideas which our delegate has in store for us. We have eleven brand-new initiates to carry on the work of the chapter. Let me introduce them to you: Charlotte Beachler, Dorothy Beal, Mary Campbell, Florence Craig, Inez Derry, Grace England, Agnes Hewitt, Florence MacKenzie, Miriam Sage, Margaret Fluke, and Virginia Weinschenk. Also we have a pledge with which to start the year, Jane Miller, of Edgewood, Pa.

The house has been open all summer and Mother Vernon has done remarkably well. It was filled during summer school and several of the girls will remain there until the winter session begins. Already we have more girls for the house than we have rooms. Two of our girls who have not been with us for a year will return—Ethel Swearingen and Alice Aston.

Two have entered the matrimonial ranks: Florence Montgomery, who is now Mrs. Frank Highberger, Σ N, and Wilhelmena Eakin, now Mrs. Harvey Harmon, Α X Σ. The engagement of Illula Morrison to Edward Hanson has been announced.

As a result, a linen shower in the home of Virginia Nieman and a kitchen shower in the home of Mary Merrick were held in honor of Billie Eakin. A linen shower was held in the home of Helen Covalt in honor of Florence Monte.

Many parties have been planned before school starts. Pledging season is again changed, and is to begin Dec. 10 and last only for a few days. It seems that Panhellenic cannot hit upon a plan suitable to all situations, but this one seems very good.

OLIVE WILT.

BETA UPSILON*West Virginia University*

Beta Upsilon is planning to own her home. Indeed, so busy did we all become starting our campaign, just before we left the university, that other things were forgotten. One of our money-raising stunts was the making of five hundred sandwiches for a dance given by a men's organization. Besides this each girl took a dollar as capital and is working to enlarge this sum as much as possible during vacation.

Our former KEY correspondent, Virginia Armstrong, who was graduated this year, was elected to Phi Beta Kappa. She was chosen as one of the two students from the whole student body to be awarded a university letter because of campus activity and all-around student life.

In the spring election Kappa was doubly honored. Mary McNeill was elected by the student body as member of the Social Committee, which governs all of West Virginia's social affairs, and Theresa Dower was made a member of the Student Council. Eleanor Miller, our new president, was elected to membership in Laurel, the honorary senior society for girls who are active in campus life.

Perhaps all our various interests caused us a little loss in scholarship, as we were second among the Greek organizations in scholastic standing at the close of the first semester. The report for the whole year is not yet in, but we have hopes of winning the intersorority cup again.

The last busy week before examinations brought us a pleasant surprise—our visit from Miss Wood, whom we had almost given up for lost. Although we were unable to entertain her as we would have liked, we thoroughly enjoyed her stay and gained much help from her talks with us.

We closed our year the last Sunday with the entertainment of our visiting alumnae at tea. Then all the girls packed up and spent a happy two days at a house-party on Cheat River before parting for the summer.

MARGARET REAY.

PHI*University of Boston*

Of course we must tell Kappadom of our Phi Beta Kappas, Marion Pickles and Miriam Warren, and how proud we are of them, because of their many outside activities as well as their studies. "Pickles" was valedictorian of her class and leader of the Glee Club.

During the summer, there were two Round Robin letters in lively circulation buzzing from Colorado to Maine and back to Ohio, carrying news of a score of busy summers. One of the girls told of farmeretting in Massachusetts, another of social work in Colorado, where she has been writing and directing a pageant for the children, and in the meantime has been living on ranches, where she lends a hand with churning, or honey-combing, or any other job that is in progress. Some of the girls have dared the city heat and Muriel has been at college standing guard at "Info" all summer. Of course, we can hardly wait to hear all that

"Stick" and "Em" will have to tell us about convention. "Pickles" has spent the summer at home in Marblehead, busy as usual, and she writes of an honest-to-goodness college position next year teaching music. Evylin has been directing sports at a camp in Vermont.

Now, house-party is ahead, with a chance for us all to try to talk at once, listening at the same time! Big plans are made and we are all eager for a gay reunion, but by the time this goes to press, we shall all be back at college, pegging away at Latin and English Composition, and looking forward to our Monday evening suppers together.

MARION RICHARDSON.

BETA BETA

St. Lawrence University

Beta Beta news really extends back to the spring and would not be complete without mention of our May breakfast, which was an unusually lovely one. Three girls, Mary Whitehead, '24, Gertrude Wood, '24, and Alida Bassett, a graduate of Beta Tau chapter, bravely raced around the table indicating their intention of taking the fatal step. But that was not half as startling as the appearance of a real live "pig in the parlor" a few mornings later, left by serenaders the night before.

Our alumnæ banquet was an inspiration to us all and included several members who had not returned for many years.

The graduating class included only four, Una Tuthill, Gladys Carpenter, Marion Phelps, and Helen Lutes. They are all going to teach school this coming year.

Frances Purdy, '23, was our representative at convention and we are eager to hear her report of it. She is also president of the Women Students' Self-Governing Council at the University. The president of Panhellenic for the coming year is Susan Bernier, '23.

The annual Kappa picnic was held at the Lodge this summer. Only two active members were present but many alumnæ were there, the picnic being primarily for the alumnæ spending the summer in or near town.

CATHERINE BERNIER.

BETA TAU

Syracuse University

Spring was a busy season for Beta Tau. First there were the elections, in which Marjorie Wells, '23, was made president of Women's Student Governing Association, to succeed Ruth Trett, '22.

Of our ten seniors we had one Phi Beta Kappa, Ruth Trett, and four Phi Kappa Phis, Alice Childs, Margaret Whitney, Ruth Trett, and Marion Coville. We were proud to have four of our girls elected to Eta Pi Upsilon, honorary senior society, whose membership is limited to the best all-around girls in the University.

In April we held a Kappa Kounty Fair to raise money for the "new house" which every chapter ultimately hopes to have, and invited our alumnæ to come and bring their husbands and pocketbooks. Each girl

made or bought articles to be sold at the bazaar, and the various rooms in the chapter-house were turned into side-shows. A small admission was charged. The dining-room made a very effectively decorated room, where all kinds of good things were served. The enterprise was voted a huge success, and we cleared \$100 for our house fund.

A special initiation was held for Katherine Cahalan, '25, whose initiation at an earlier date was prevented by illness.

Mary Hutchins, '24, has been elected to Theta Sigma Phi, honorary journalistic fraternity. Mary is going to Columbia this year to study for her newspaper career, and we shall miss her.

One of Beta Tau's seniors received a rather unusual honor this year. A new medal for the most representative woman of the class of 1922 was presented to Ruth Sweet.

Our chapter activities ended in June with the alumnae banquet, which was held in the Home Economics Department. An unusual feature was the fact that the toasts were in the form of a symphony interspersed with music.

We are joyously anticipating our return to a house which has been painted and plastered and generally improved. With our new furniture and draperies we feel that the Kappa house will present a far from unattractive appearance when college opens. Syracuse is going to try preferential bidding this fall for the first time, and we hope that it will work out successfully.

FLORENCE BRAY.

BETA PSI

University of Toronto

The past college year ended very successfully for Beta Psi.

During the year we distinguished ourselves in every branch of college activity. In athletics, Winifred Snyder succeeded in winning the athletic stick. This stick is annually presented to the best all-around athlete of the incoming senior year. It has been won the past three years by Kappas. Marion Hilliard has been appointed secretary of S. C. A. and also of the athletic society. Maryon Moody and Victoria Hanna are on the *Acta* staff, the college magazine. There were also many appointments of class executives.

After examinations were over we spent two happy weeks at Marion Brewster's cottage at Grimbsy on Lake Ontario, where our two new pledges, Mona Lavell and Lillian Snyder, were ever in demand.

Now we are looking forward eagerly to the opening of college, and send greetings to all our sisters.

J. VICTORIA HANNA.

BETA RHO

University of Cincinnati

We are happy to announce that we have in our midst a new Phi Beta Kappa, Helen Guhman. We are also proud of the fact that three officers

of Woman's League are Kappas and that four members of the Y. W. C. A. cabinet wear golden keys.

At the beginning of the fall semester we will hold initiation for five pledges, Edris Henry, Dorothy Perkins, Bess Riley, Olive Kaiser, and Bernice Williams.

A new problem confronts Beta Rho this year. Preferential bidding has been adopted by the local Panhellenic Association. We have never dealt with this type of bidding before, but with the inspiration of an initiation service at the beginning of the year and the enthusiasm which our delegates have brought back from convention and radiated through the chapter we are confident of success.

ELIZABETH SIDLE.

MU

Butler College

Mu is ready to start a new year, full of untold opportunities. As Butler is growing, so must we, not in numbers but in a broad sympathetic spirit worthy of the name of Kappa. After hearing those inspiring convention reports a few weeks ago, we are fired by new zeal and purpose to make this year a banner one. We are squarely facing for the first time in years the necessity of reducing the size of our chapter. It is especially hard to cut this year when such an abundance of splendid material presents itself. However, we are trying to see Kappa not as one little group but as one big harmonious unit and we shall strive to do what is best for all Kappas.

We consider ourselves fortunate in getting our house for another year. In the uncertainty of Butler's being moved, nothing definite concerning a chapter-house can be decided. But we hope some day to own a true Kappa home—permanently.

In the matter of chaperons, too, we are lucky. Our former guardian, Miss Alice Bidwell, married Prof. Wesenberg in June, but we have a lovely new house-mother.

The mothers' Club, composed of mothers of Kappas, has been a material help to us during the past year. Beside countless house-furnishings given at a shower, they presented us with a beautiful floor lamp and a set of new dishes. And they usually spend their time at the club meetings hemming table linen for us. That's what we call real Kappa spirit.

Many of our girls are leaving us this year for new fields. Catherine Phillips is attending the University of Colorado, Betty Helm will finish her course at Indiana, and Harriet Kistner at the University of Illinois. Genevieve Adams is teaching in a township school east of Irvington. Nellie Brewer is attending Sweet Briar, Virginia. Katharine Belzer, '22, is studying eugenics in the East.

Marjorie Trask, '21, returned recently from a tour of Europe.

We pledge ourselves to new vision and greater service for 1922-23, and wish for all Kappas a happy and successful year.

RACHEL CAMPBELL.

DELTA*Indiana State University*

Delta is very proud of her girls this year, as we number among us the president-elect of both the Women's Self-Government Association and the Y. W. C. A., Gail Hammond, '23, and Margaret Telfer, '23. As these are the two biggest co-ed organizations on the campus we feel that we will be in the midst of women's activities this coming year. Also two of the nine girls who were selected as members of Mortar Board this spring were Kappas.

The one thing in the minds and hearts of every one at Indiana this past year was the Memorial Fund. At first the goal was \$1,000,000 and now the alumni have raised it to \$1,600,000. The campus quota was \$400,000 and the active chapter of Delta subscribed \$10,000 as individuals, and \$1,000 more as a chapter. So now we're all saving up our pennies and nickels to pay our pledges.

Six members of the chapter went to convention, and four or five are planning to be at Lake Geneva for the Y. W. C. A. Conference this summer.

Margaret O'Harrow was our June bride. She was united in marriage to Lester R. Null, track coach at Indiana, a few days after school closed. Mary Elizabeth Loudon, '19, has announced her engagement to John Emery, Phi Gamma Delta, of Michigan. The wedding will take place early this fall.

Several of our girls have been in summer school, while others traveled, visited, or were at home. We are all eagerly looking forward to school this fall as there are prospects of good material for future Kappas.

CORNELIA Vos.

BETA DELTA*University of Michigan*

Beta Delta is still exulting over the joys and thrills of Kappa convention and Glacier Park. Those of us who were fortunate enough to go feel confident that we absorbed enough Kappa spirit and mountain air to last the chapter for many years to come. However, we are already beginning to look forward to our next convention.

So many interesting things have been going on in our chapter that it is difficult to know where to begin.

On March 11, the following girls were initiated: Ruth Sturmer, Faye Wight, Ruth Tuttle, Marion Jocelyn, Elizabeth Lapham, Marion Blood, and Elizabeth Ranck.

During the spring, announcement was made at the house of the engagements of Helene Torrey to Frank McPhail, Alpha Sigma Phi, and Gwyneth Wrentmore to Frederick Worcestor, Psi Upsilon.

In April, Marion Jocelyn was married to Rand Schenck of New Kensington, Pa.

Kappa has been active on campus as well as in engagements and weddings. Dorothy Whipple and Helen Keyser were elected to the Cercle Française; Joyce Van Alstyne was made senior representative on the Women's Athletic Board; and Joyce McCurdy was voted the prettiest girl in the senior class.

In the annual senior play, *Pomander Walk*, Joyce McCurdy played a leading part. She also had an important rôle in *The Yellow Jacket*, Masque's spring play. We will miss Joyce and her dramatic talent next year.

Kappa was also well represented in *Scepters and Serenades*, the annual Junior girls' play. Helene Torrey was chairman of the lyrics, Frances Sutton designed the program cover, Joyce Van Alstyne was in the cast, and Helen Partlow and Sadye Harwick were the authors.

Dorothy Whipple and Helen Keyser had rôles in the French play given by the Cercle Française.

During the second semester we entertained all of our patronesses and their husbands at dinner.

We also entertained our near neighbors, the Delta Gammas, at a picnic up the river.

Due to the interest of Beta Delta association and some extra funds, very attractive changes in the decoration of the house are being made, and we are enthusiastic to return to school and begin our next year's program. We shall miss our splendid seniors of last year very much, and we hope they will come to see us often.

SADYE HARWICK.

KAPPA

Hillsdale College

The summer holiday has proved that the wonder and delight of many events can make even absence from studies bearable and we are still collecting ourselves after the excitement of the last month of college.

This eventful last month was enthusiastically shared by our eight new initiates, to whom it also brought a fuller realization of the beauty and obligation of Kappahood.

Our spring party took the form of a dinner-dance at the Hillsdale Country Club, where the pavilion was made gay with Japanese cherry blossoms and lanterns.

We entertained the Pi Beta Phi at a "gingham party", which began with a swim at Bawbeese Lake and ended in a race with a May rain-storm.

Our patronesses gave the chapter an enchanting all-day party at a tea room and gift shop in Jackson, about forty miles from home. The occasion was made even more charming by the announcement of the engagement of Betty Candler to Donald Stewart, Delta Tau Delta.

Our alumnæ of Hillsdale gave us a tea for the purpose of drawing us together once more before the last days.

At the presenting of honors for the year, Kappa chapter was proud of her daughters. Four freshmen, Gladys Johnson, Peggy Dean, Lois

Reynolds, and Alice Moore, were made members of the college honorary society, Epsilon Delta Alpha. Peggy Dean and Alice Moore won the first and second prizes in French and several of the girls were awarded athletic honors. We have charter members as well as some initiates in the recently established dramatic fraternity, Theta Alpha Phi, and have done our full share in spring dramatics.

Betty Candler, one of our seniors, was chosen Queen of the annual May Fête by the college. We were more than happy after many weeks of wondering to see the crown placed on the lovely head of our own Betty.

Commencement week was a busy one for us, entertaining our most welcome alumnae, relatives, and friends, and ending in the traditional Kappa breakfast on commencement morning. There we heard the news and advice of our alumnae and received the hearty good wishes of our new college president, Dr. Spencer.

Kappa chapter has much to anticipate for the coming year. Our first weeks will be busy with settling in the old house, college activities, initiation, and an enthusiastic review of convention with Elsie and others. We are looking forward to these with pleasure and rising joy at the thought of being together again.

ALICE LOUISE MOORE.

ETA

University of Wisconsin

The last months of the school year were eventful ones for Eta chapter. At our Formal in March, the engagement of Josephine Walters to Philip O'Neil, Phi Delta Theta, was announced.

The week-end of May 12 we invited our mothers to a mothers' house-party. Twelve guests enjoyed it, we hope, as thoroughly as we did. We are planning another such week-end next year and we hope more mothers will be able to attend.

Late in May we held an auction sale, with Betty Castle officiating, to raise money for the scholarship fund. Each girl was required to bring at least one "white elephant" and to buy one. It was highly successful. Besides yielding over \$90.00 for the fund, we all enjoyed it immensely.

We are proud of the taste exhibited by the University in choosing, by popular vote, three of our girls among the ten most beautiful girls on campus. Mary Cunningham, 1924, took first place. Pauline Ambrose, 1923, was second, and Mildred Gerlach, 1922, was fifth.

We were more than happy to welcome many sisters back for alumnae banquet June 10. Helen Kasbeer who was sent to China to represent Wisconsin at a Y. W. C. A. conference, returned to be with us. She told us a few of her experiences and what Kappa had meant to her in the Orient. The highest scholastic attainment among Kappa freshmen was announced. Louise Holt has held an average of 91 throughout the year. A much needed and deeply appreciated gift of linen was made by the

Milwaukee alumnæ association. Over 100 Kappas enjoyed a delightful week-end reunion.

Thirty of our girls are returning in September. We are looking forward with keen anticipation to the fall.

DOROTHY BONDURANT.

EPSILON

Illinois Wesleyan University

Epsilon chapter has been so busy that we forgot to write our last chapter letter, but we may assure you for financial reasons that it will never happen again.

As our college work deserves first place, we turned our attention to our scholarship. In the final ranking Kappa was on top. Louise Lacock and Frances Mitchell had the pleasure of attending the Alpha Gamma Delta scholarship banquet given for the two highest in each chapter.

We co-operated with our alumnæ chapter in giving a cabaret supper at the Bloomington High School, and in this way more than enough money was raised to pay the Y. W. C. A. pledge of the association, and every one had a good time besides.

Bubby Brown kept our name bright in dramatics for she was a great success as leading lady in *The Importance of Being Earnest*.

In a literary way we shine also, for the work of Louise Lacock and Esther Shultz on the *Wesleyana* was very commendable.

Kappa had four representatives in the class of '22: Florence Shreve, Mary Kraft, Bernice Brown, and Frances Mitchell.

Florence Ryburn recently married Hardin Boulware.

The engagement of Sybil Kraft to Eugene Hiser, S. A. E., has just been announced.

Gladys Schloeffel, sophomore, spent the month of August as a director of pageantry in Chautauqua work.

While all of this gave variety to our school year, we consider our spring formal the best part of all. Dorothy Shade acted as our hostess for it at the Bloomington Country Club.

Our convention delegate, Alta Mae Harrison, reported to us all the delightful mysteries of Glacier Park.

HELEN DOOLEY.

SIGMA

University of Nebraska

Many things have happened in Sigma chapter since our last letter to THE KEY. Our spring party and alumnæ banquet, both great successes, were held at Hotel Lincoln on May 19 and 20. For the party the ball-room was decorated with spring flowers and a fountain, while the popular Southern Rag, a jazz band, furnished the music. Many alumnæ returned for the banquet. Blue and blue streamers hung from the chandeliers of the dining-room and on the tables were fleur-de-lis. At each

place was a copy of *The Kronicle of Kappa Kappa Gamma*, the little yellow sheet telling the doings of the members of Sigma. After several fine toasts and a clever stunt given by the freshman class, our thoughts turned as usual to the house proposition, and it was decided that we are to have a new house all our own in the near future.

An excellent plan was devised to raise money. Bonds from fifty dollars up are issued to any person who wishes to buy them. These bonds are issued through the First Trust Company of Lincoln and they pay six per cent interest. In this way we are merely borrowing the money which will all be returned in a short period of time with the interest compounded. The bonds have sold exceptionally well and the prospects now look promising for our new home.

But owing to the fact that we could not possibly have the new house before spring, the alumnae have notified us that they have rented for next year a splendid, new, twenty-roomed house which was constructed especially for a fraternity house. We are extremely happy and can hardly wait for college to open so that we can get settled. May we prove ourselves worthy of all that the alumnae are doing for us.

The girls have come back from the convention, all enthusiastic, especially since Mrs. T. A. Westermann, our new National President, is a Sigma woman. On her return from convention, luncheon was given for her at the Brown Betty Tea Room in Lincoln by the members of Sigma who were there. Of the ones who went to convention, four were active: Roberta Prince, the delegate, Lorna Plimpton, Irene Simpson, and Mary Ure. They can not say enough about the wonderful girls they met and the good times they had. It surely is too bad that every Kappa can not attend each convention.

Ruth Kadel, who was married in June to Joe Seacrest, Phi Delta Theta, was one of the editors of the *Cornhusker*, a Silver Serpent, active in W. S. G. A. and Y. W. C. A. work; she was the first woman member ever elected to Kosmet Klub and was chosen as a member in the Black Masque chapter of Mortar Board. She was a splendid president for Sigma all year but we are confident that Bernice Scoville, our new president, will be as successful. Roberta Prince is next year's member of Valkyrie, senior honorary society, and vice-president of the junior class. Lois Thompson is a Silver Serpent member, junior honorary, and is active in Y. W. C. A. work. Francis Mentzer is Xi Delta, sophomore honorary, a member of Freshman Commission, and a Y. W. C. A. worker, and took part in the Kosmet show. She is also a member of Vestals of the Lamp, a new society in the Arts and Science College.

Three of our girls, Nora Livingston, Helen Storms, and Jane Babcock, who received their degrees last June, expect to teach this fall. Nellie Lee Holt was given her master's degree in English.

Sigma has had a most prosperous and happy year and is looking forward to another. Success to all for the coming year.

BERNADINE A. SMITH.

GAMMA IOTA*Washington University*

We consider the election of Grace Able (Mrs. Sidney T. Able) to Phi Beta Kappa, the greatest honor of our spring term, since we are the youngest sorority on the campus. She was the only fraternity woman to be chosen. We are also proud to say that sophomore honors were awarded to Katherine Atwood.

The chapter has been so scattered this summer that no definite schedule has been followed, but we are looking forward to a profitable fall season. Our local Panhellenic has adopted the plan of preferential bidding and we feel that this will be to our advantage.

ETHEL COX JOHNSTON.

GAMMA THETA*Drake University*

On May 31 a successful school year ended for Gamma Theta. We claimed three graduates, one of whom took her master's degree in music and is teaching in New Mexico this year. At all of the school elections which were held late in the spring, the Kappas took prominent parts. Margaret Clark was elected secretary of the Student Council and secretary of the Y. W. C. A. and also to Sieve and Shears, senior honorary scholastic society. Bernice Bramhall was voted one of the three most representative Drake girls, and Pearl Campbell won the election for the most popular girl on the campus. Kappa also won the silver cup in the Intra-Mural track meet. After the excitement of examinations was over we were launched upon a busy but happy summer. The first events of interest were two Kappa marriages, Kathryn Habenicht and William D. Harris, Sigma Alpha Epsilon, and Norma Mershon and Fred Mathis. The latter couple were married last January and kept it a secret until July.

Then came our first convention, which we had long anticipated. Our delegate returned bubbling over with enthusiasm and gave us such an inspiring report that we believe this will be one of our best years. We were given a hearty welcome and made to feel that we had *always* been Kappas, and no one except those in a similar position can understand what that means.

Three of our girls will not be with us this year. Mary Martin and June Johnston are going to Wellesley and Isabel Carothers will attend Northwestern.

We are happy to announce that we have leased a chapter-house for this year. It will be a new experience, as it has been some years since we had a house, and we trust that it will be beneficial to all, drawing us closer together and building a stronger chapter. We are busy planning draperies and furniture in order that everything may be ready before school starts. That is but a short time away and we trust that the next time you hear from us we will be well established in our new home.

RUTH SHAW.

BETA MU*Colorado State University*

The members of Beta Mu are anxiously awaiting the coming year as they are going to build a new house. Mrs. Fry of Denver is chairman of the building board and is working hard in behalf of the chapter. We hope that the house will be started by the time the next letter is written.

We had eight seniors graduated in the spring. Two were Phi Beta Kappas, Dorothea Toerge and Sarah Fahnstock; and Marian Sims was graduated *cum laude*. Eva Gertrude Bardwell, another member of the senior class, married Jackson Brown, Jr., Kappa Sigma, just after the close of college. Betty Baker is to marry Lynn Kemper in October.

On Aug. 24 we are giving a party at the Lakewood Country Club in Denver and about forty-five girls expecting to attend the University have been invited.

By the time this letter is printed most of the chapters will have their new pledges. May these pledges have many happy years in Kappa.

GERTRUDE McINNES.

GAMMA ZETA*University of Arizona*

Gamma Zeta chapter enjoyed a visit from Della Lawrence on May 14. She arrived early Sunday morning, and stayed with us until Tuesday morning. The alumnae entertained her Sunday night. Sunday afternoon we gave a tea, inviting members of other fraternities and of the faculty to meet Miss Lawrence.

We wish to announce that on May 7, we initiated Louise Kirmse, Hollywood, Cal., and Marion Duncan, Phoenix, Ariz.

We have three splendid new pledges: Wilma Stephens, Clifton, Ariz.; Peggy Manchester, Globe, Ariz.; Dorothy Hill, Prescott, Ariz.

Our chapter is furnishing its share of teachers for the coming year. Of the eleven girls who graduated, six have secured positions in high schools throughout the state. Lois Wendel, one of the seniors, was elected to Phi Kappa Phi.

Mary Cromwell attended the convention this summer. We are anxious for the University to open, so we may hear all the wonderful news which she will have to tell us.

Just before the close of the University, Ruth Prina's engagement to Prof. Ernest B. Stanley, S. A. E., was announced.

Dorothy Knox was married to Donald McQuiston, Aug. 7, in Pasadena, Calif. Marguerite Ronstadt was her maid of honor.

HATTILU STONE.

GAMMA BETA*University of New Mexico*

The returning of autumn seems like the rightful New Year with new ideas, new plans, new resolutions, and the revival of the old friendship of those we have not seen for months. Then we recall how we left these

friends last, and what they have been doing during their vacation. June 10 was a happy day. We all were glad that the year was over, and pleased in knowing that we had done our best. Socially we did very little, during the last month. Picnics were our principal diversion. The three days that Miss Lawrence spent with us in May were very pleasant. We missed her after she had gone, and wished that some fairy godmother would have her stay with us forever. Our Kappa wedding was beautiful. On June 10, Irene Fee was married to Edward Lighton. Only the immediate families and the Kappas were invited. We were happy to be so honored.

Norma Williams was invited to become a member of The Rouge Pot, an honorary organization for the promotion of musical and literary talent. But this is what I am anxious to tell you. Yes, we did—we won the *scholarship cup*. After such an event as that we felt it our duty to relax this summer and prepare to get it again next semester. This summer our members are enjoying vacations in nearly all parts of the United States. The coming season looks very promising.

RUTH DOUGHERTY.

BETA THETA

University of Oklahoma

Beta Theta has been gathering her forces for an energetic opening of the college term. In the first place, the short but pleasant visit of Della Lawrence last spring inspired us with fervor "to hitch our wagon to a star" and win the scholarship cup this year.

We have some promising freshmen, and we are hoping to be able to present some excellent new pledges to you in the next KEY.

We are losing a number of good girls this year—some have graduated and a few others are giving suspicious reasons for not coming back. Our new alumnae are Vivian Stewart, Carol Daube, Catherine Crew, Cordelia Standley, Josephine Mitchell, Mildred Colby, and Lena Brown. We shall miss them all and we are hoping that they will often come back home.

We are pleased to announce the engagement of Lena Brown, our popular transfer from Theta, to Francis Welch, Beta Theta Pi.

The girls from our chapter who attended convention are so enthusiastic that the rest of us who weren't as fortunate as they can hardly wait to hear all about it. We should have a good report, for four girls went from Beta Theta—Katherine Peak, who was our delegate, Stella Ostenburg, Cordelia Standley, and Mary Meredith.

The chapter-house was open during summer school and several of the girls braved the heat of Norman to attend classes. We also rented rooms to other students. This last money-making device was thought of by Katherine Peak, our house manager.

I have saved the best for the last. Beta Theta is going to have a real home! It isn't a possibility any more—it has grown to a probability, and

we are daring to hope that within two years, with the help of our faithful alumnæ association, we shall have a home of our very own.

Another word about the alumnæ association. The members very graciously gave a tea this spring at the home of Mrs. Smith, at Oklahoma City, so that the active chapter might meet the Oklahoma City girls. Whenever we begin to lag a bit in our efforts here at Norman our sisters in the city lend a hand and give us a new lease on life.

Elizabeth Lears is head of the chapter this year and we know that under her leadership we shall be able to line up to our ideals.

MARY CHARLES MITCHELL.

BETA XI

Texas State University

One of the best things that happened to Beta Xi this winter was the initiation of six more girls: Harriette Brush, Adele Marcus, Rosalie Biggio, Francis Graham, Marie Smith, and Josephine Gilliam. All of these girls are in student activities on the campus and hold important offices in the chapter as well as in these organizations.

Lucy Harding Adams was our delegate to convention this year and four more of our girls were with her at Glacier Park.

Beta Xi gave a house-party in the chapter house in April for freshmen of this fall. Girls from all over the state were with us when we had two Kappas, Lucy Harding Adams and Eloise Carr, leading the Easter German. In March the junior dance was led by Josephine Gilliam.

Kappas sold the greatest number of *Cacti*, the school year-book, thereby winning the cup. Margaret was chosen *Cactus Queen* and led the grand march of the Thanksgiving reception which was held in the Chamber of the Senate and House of Representatives at the Capitol.

In the spring term election, Elizabeth Baker was elected chairman of Woman's Council, the highest office in school a woman can hold. Marie Smith was president of the Representative Board which governs the social life of the University. Eleanor King was recording secretary for the Woman's Athletic Association. Francis Graham was manager of the dancing team and Harriette Brush, hockey manager.

On Founders' Day, May 12, the alumnæ gave us a picnic in Enfield and we all enjoyed it. On June 12, we had our farewell feast in the form of a breakfast at the Driskill Hotel. Many alumnæ attended and plans were discussed for a successful year in 1922-23.

The house has been kept open this summer by a Kappa mother and by Sept. 14 all the girls will be back making preparations for the fall. Preferential bidding is to be introduced this year, so everyone is anxiously awaiting the results of the new system.

JOSEPHINE P. GILLIAM.

BETA PI

University of Washington

Although it's nearly time for our fall quarter to begin we have not quite forgotten all the honors gathered by Beta Pi in the spring quarter. Our illustrious Margaret Grimes, who was also our delegate to convention, was elected president of Athena, national honorary debating club, and vice-president of the senior class. She also had the distinction of starring in the play *Clarence* which was pronounced by all a marked success; and she was elected to Red Domino, the woman's honorary dramatic club, too.

However, there are others of fame in our group. Margery Gilbert played an important rôle in *Clarence*, and was elected to Tolo Club, the senior women's honorary. This honor was conferred at the same time on Susan Erwin. Margretta Macfarlane is secretary of the Women's League, and Josephine Francioli, who is now traveling in Europe, was the freshman-sophomore champion of women's tennis and therefore runner-up in the varsity women's finals.

Beta Pi has won scholastic honors, for, out of a group of 150 junior and sophomore honor roll students, Kappa had more than her share with twelve.

Now for the gayer doings! Senior luncheon, which always closes our school year successfully, was really wonderful this time and we still thrill at the memory. On the evening of the same day we gave our annual dance. Mrs. Eliza Ferry Leary had been kind enough to lend us her magnificent home and altogether it was a perfect day. Farewells were then said and another precious year of school life was ended.

Of course, the year could not be complete without a few engagements and weddings to embellish our records. Marian McGill, '21, announced her engagement at senior luncheon and was married in August. Immediately after school had closed, one of our Colorado freshmen, Charlotte Thomas, announced her engagement to Warren Chase, Delta Kappa Epsilon. Phylis Heath, an affiliate from the Stanford chapter, is now engaged to Charles Walker, Psi Omega.

Lastly, but holding a prominent place in our minds, is the convention. Thirteen of our girls were present, which we hope will greatly help us this coming year. And honor of honors, our old friend, Marie Leghorn, was elected National Registrar. Excuse us for being proud, but this makes two Grand Registrars in succession from Beta Pi chapter.

Then would we say a few words about the girls from convention who came out to this far western corner and visited us. We appreciated each visit, wished there could have been even greater numbers, and hope that the friendships begun by the convention this year will be continued, making us all actually sisters together in Kappa Kappa Gamma.

JOYCE GOWEN.

BETA PHI*University of Montana*

As it happens every year, Beta Phi is thrilled and anxious about the fall season. Track meet gave us an idea of the great number of desirable girls we will meet this fall and ask to our first party, the dinner-dance on Sept. 28.

Kappas have the wedding fever this summer. In April we were all surprised, yet not completely, to receive an announcement of Marion Schlick's marriage to Jack Sterling, Sigma Chi, University of Montana, '21. In the same month, we received word that Francis Longeway had been married to Louis Charles Flaherty at Chicago. The whole chapter attended the beautiful church wedding of Constance Keith, '21, to Louis Lansing, Phi Kappa Psi, Beloit, '21. Grace Buford, '22, was married in August to William Larkin, Sigma Chi, University of Montana, '21. In September there will be another wedding, Olive Dobson, '21, to Alfred Farmer, Phi Delta Theta, University of Montana, '21.

The most romantic wedding, however, is that of Florence Dixon, '20, and a graduate of Johns Hopkins University, '22, who left in August for the Philippine Islands where she will marry Dr. Thomas Nelson Leach, who is in charge of a health survey conducted under the direction of the Rockefeller Foundation.

In spite of all this excitement, the girls have had time to rest and we are looking forward to the opening of school with enthusiasm and new vigor.

MILDRED McQUARRIE.

GAMMA GAMMA*Whitman*

The past three months have been newsy ones for Gamma Gamma chapter. In the commencement at Whitman this year we had reason to be proud of our seniors who captured so many honors. Our graduates were: Helen VanNuys, who graduated *magna cum laude*; Amy Brown, Sidonie Pyle, Willena Long, Ruth Reynolds, Mary Yenney, all of whom graduated *cum laude*, and Margaret Sayre and Roberta Blomquist. Helen VanNuys was also commencement orator chosen by the faculty, an honor won by her various student activities. Helen and Ruth Reynolds received major honors in English.

Miriam Lienkaemper was elected to Mu Phi Epsilon.

Several of our girls were fortunate enough to attend the wedding of Willena Long to Forrest Cation, Beta Theta Pi, on July 19. The ceremony was a beautiful one performed at the Congregational Church in Pomeroy and attended by one hundred guests. Gamma Gamma is doubly fortunate in this wedding for Willena will make her home in Walla Walla, where she can continue her fraternity activities.

Another beautiful church wedding was that of Mildred Smith, '21, and Bruce Clingen. The three bridesmaids were all Kappa sisters. The wed-

ding took place in Walla Walla on June 12, so most of the girls in the chapter were able to go. A reception was held in the Smith home following the ceremony. Mildred will make her home in Denver, Colo.

How proud Gamma Gamma chapter was when it was presented with its first pair of twins by Effie Duff McKay, '17! We are expecting a future Kappa and Beta, just as their parents were before them.

Our vacation activities have included everything from tourists to book-keepers and farmerettes, but of course we are all anxious to get back to Whitman and get acquainted with the freshmen and prospective Kappas.

HULDA GAISER.

BETA OMEGA

University of Oregon

Looking back from August to March and the last KEY letter seems a long look, and memories of spring term at school a bit dim, with all the summer memories and pictures crowding in between. As I think back now to that glorious stretch of days, full of activities of a varied nature, social as well as campus, the two events that stand out are April Frolic and Junior Week-end.

April Frolic is an annual event in which all the women's organizations on the campus participate. Each organization puts on a stunt and the best of them receives a silver cup, which changes hands from year to year and is to go finally to the winner whose name appears on its silver surface three times. The increasing number of organizations this year forced the committee in charge of the Frolic to devise a system of drawing lots whereby only half of the organizations would compete each year. This year we were among those out for the cup, and we won it. We put on a skit entitled "Pierre Patissier," with six jolly bakers in white; six French pastries dressed to represent chocolate eclairs, mocha squares, jelly rolls, etc.; six dapper bell-hops in blue and gold who did a shuffle dance and carried off the pastries; a fat French chef, Pierre Patissier, and a raspberry tart who was "left on the shelf" because raspberry tarts aren't served at tea, and sang and danced very mournfully. The girls in the house made the costumes, wrote the songs, and the participants practiced their singing and dancing tirelessly. The result was a finished skit which we were called on to present repeatedly at school affairs, including Junior Vaudeville. This is the second time that we have won the cup and winning it another year will insure our having it "for keeps."

Junior Week-end, when all organizations are privileged to have freshmen for house guests, is always a wonderful three days, with school work suspended and a continual round of events. The Junior Prom and the Canoe Fête vie for first place in general interest. This year its success testified to efficient work on the part of committee members.

The Beta Omega seniors entertained the other three classes with a picnic on Decoration Day, our last big good time just among ourselves. Our seniors were twelve in number, a strong class, active socially and on the campus, and a Rock of Gibraltar in the house. The underclassmen

entertained the upperclassmen with an informal dance at the country club just before examination week.

School time is very near again and we are all looking forward to it with interest and enthusiasm and the desire to make it "bigger and better" in all respects.

NANCY WILSON.

BETA ETA

Leland Stanford Jr. University

Last spring term was one full of work and outside interests for members of Beta Eta. We aimed high in scholarship to keep our place at the top of the list. Yvonne Pasquale was honor scholar and Anne Hardy was elected to Sigma Xi.

In every field of activities we were well represented, most conspicuously, perhaps, in dramatics. In the choruses of the Junior Opera, Ruth Whitaker, Lura and Martha Spangler, Yvonne Pasquale, and Helen Harris had parts. Virginia Burks was given a rôle in the Senior Farce. We combined with the Alpha Deltas to put on a "Follies" show in the annual carnival and are very proud of our large silver cup awarded us for the most popular and profitable concession.

Much of the success of the women's pageant, given by all the women of Stanford, was due to the efficiency of the chairman of the pageant committee, Anne Hardy.

In Y. W. C. A. work, Marion Gibbs is secretary of Senior Cabinet, and Ellen Callander is president of Freshman Cabinet.

Senior Dinner in May brought us a surprise, when the engagement of our house mother, Mrs. Holcomb, to Colonel Abner Pickering was announced. Although we were glad for her happiness, we couldn't help being sad at the thought of not having her with us this year. The engagement of Frances McGregor to Curtis Lane Falk, a Stanford Delta Upsilon, was also announced.

Several weddings took place last spring and this summer: Eleanor Anderson to Edward Sheahan, a Stanford Beta; Harriet Hunt to Philip Bard, Princeton; Helen Carman to D. Edmund Wood, a Stanford Phi Kappa Psi; and Marjorie O'Keef to Sumner McGinnis, a Zeta Psi. Mildred Hoover is to marry Neil Willis on September 2, and Ruth Whitaker and Phimister Proctor, a Stanford Beta, are to be married this fall also.

This year will find all the sororities at Stanford entering upon a new system. Instead of the first two weeks, followed by bidding at the beginning of each quarter, we are to have spring bidding. This plan is on trial for three years.

The time this letter is due finds us scattered about the world enjoying a pleasant vacation, most of us on this continent, but several—Violet and Ellen Andrews, Helen Mosher, and Harriet Hunt Bard—in Europe. As October draws near, however, we are eager to return to college and take up our work and play with renewed vigor and enthusiasm and are looking forward to a wonderful year for Beta Eta.

ELLEN CALLANDER.

In Memoriam

ELIZABETH HALEY, *Epsilon*

Elizabeth Haley was born on July 31, 1901, and was initiated in 1918 into Epsilon chapter where she was active for a year. Later as a younger member of the alumnae chapter she was a direct source of inspiration and help to both pledges and active members. After a brief illness of influenza she suddenly developed pneumonia, and died on February 23, 1922.

The sudden death of this young and lovable member of Epsilon chapter was a shock from which we cannot soon recover. Her nature, warm-hearted, unselfish, vivacious, impulsive, was a magnet for drawing friends who recognized her spirit of goodwill and generosity. She gave of herself so freely that her passing is felt by every one who loved her, and yet the recollection of her is warm in our hearts.

Since her school days she had been employed on the editorial staff of the *Daily Bulletin*.

We feel very keenly the loss of one who was an embodiment of our Kappa ideals and extend our deepest sympathy to her family and loved ones.

EPSILON CHAPTER.

THE ALUMNAE

MARION V. ACKLEY

NATIONAL UNITY IN ALUMNAE WORK

Those of us who were fortunate enough to go to convention will remember that we took as our motto for this last splendid gathering, "National Unity." It seems to me that a more appropriate slogan could not have been found and I am going to ask the alumnae associations and clubs to adopt it for the coming year. It is what we need and must work for in order to make our alumnae organizations hold together, to secure the greatest good for all, and to accomplish the best results. How about it?

Mrs. May C. Whiting Westermann, a '92 Kappa, our new National President, has felt that the possibilities of our fraternity make it worth while for her to "come back" after twenty years to perform again the duties of that important office. Mrs. Westermann is just as busy a person as you in Boston, you in New Orleans, and you in sunny California. When you stop to realize what time, thought, and effort a Kappa of mature mind and experience is willing to give for the good of the fraternity, do you not feel as though you wanted to do every bit you can to make her term of office even brighter than she can anticipate? Your national officers are looking to the alumnae associations these next two years for more co-operation, more helpful suggestions, and more accomplishments than ever. By keeping before us our slogan of "National Unity" we will make for the fraternity a stronger group of alumnae than in the past.

At Glacier Park a committee was appointed to investigate some work that we as alumnae can call our own. It is our idea to find something that will interest all, that every organized group of Kappa alumnae can work for. There are a great many advantages in this plan, but I particularly want to mention two. First of all, it will create a bond of common interest. When a Kappa moves from Pittsburgh, for instance, to St. Louis, she will feel at once an interest in the St. Louis Association and that feeling of strangeness, which she might have on meeting a new group of Kappas will not cause her to hesitate to go to the first meeting. It should not be there at all, I know, but I have heard

a great many Kappas say "Oh, I have been in town for almost two years and I've been intending to come to a meeting, but I only know so-and-so who called on me, and I hated to make the first attempt to get acquainted with so many others." We hope that when every organization has the same work at heart, a new Kappa in your association will not feel this hesitancy to come and get acquainted, but will know that you are doing what she has been doing back home and will enter in with ease and enthusiasm.

The second advantage is that it will give to all groups a definite work without which I do not believe a truly successful association or club can exist. Whatever is chosen as this alumnae work will be apportioned to the associations and clubs according to their size and their desire. That is, it will not be burdensome to any. The committee is already at work and I am sure you will await their report as eagerly as the rest of us.

You doubtless will be asked to give suggestions to enable the committee to choose from as great a variety of things as possible and the wishes of the majority will be considered. As soon as any definite plan has been devised it will be explained to you in detail and your hearty co-operation asked.

In the meantime, may I urge you to continue some philanthropic work or social service as you see fit? A purely social organization is not representative of true Kappas. Most of you have discovered that such a group is not successful, that you have to have something more than discussions of babies and homes, important and interesting as they are, to hold together a number of energetic Kappas from many colleges and chapters.

So I ask you to give your serious consideration to an alumnae work that will be all our own, to do something worth while in your community until the definite plan is decided upon, and to practice and preach "National Unity" as never before.

LOCAL PHILANTHROPIES

Ever since the forming of the first alumnae association the question has arisen as to what we can do that is worth while to make Kappa felt in the community. Many have been the discussions and many different ideas have been advanced, all of them bringing satisfactory results. Some associations have limited their efforts to charity among the sick and needy; some have

found an outlet in social service; others in child welfare. These are all splendid and have surely made Kappa ideals known and felt.

When the question came before our association there was an almost unanimous opinion that the girl struggling through high school needed our help first. The law in most states says that a child must be from fourteen to sixteen years of age before he can become a wage earner, so the majority of children are kept in the schools until they are of that age. It is the bright, ambitious girl just ready for high school that needs attention. Many would enter high school as soon as they finish ward school, but their parents cannot meet the additional expense of better clothes, carfare, and lunches. But for these the child would continue in school.

When school opens it is found that many of the children from the grades have not enrolled in high school and they are personally investigated by an official from the Board of Education. Often it is found that the children could go on if these things were forthcoming. Our association has a standing committee and when cases are presented to it an investigation is made, the results brought before the association and it is decided *how many* we can aid. In one instance the same girl was our charge for two and one-half years. She was assisted with clothing and \$5.00 a week for her living expenses at home. At graduation she was outfitted and appeared as well as any of the girls and was radiantly happy. She was fitted for the business world and with her first savings helped a younger sister in high school. She is now married and making a nice home, all because she was given a chance.

In most cases some high school teacher is sponsor and some members of our committee visit the home and in that way keep in close touch with the girl and her work. Last year we gave three girls assistance with carfare and clothing. One graduated in the business course with honorable mention from the Manual Training School. She is ambitious to enter a university but will have to have a position for a year before she can go further.

While we have taken the high school girl as our special work we have done other philanthropic work, giving assistance to two young women in Junior College. To one of them we made a loan which we cancelled after two years, thus enabling her to

have two years of college work. She now teaches and supports her aged parents. One case that came to us was that of two sisters who dropped out of high school because the parents could not supply them with shoes. We sent them shoes and they were back in school at once and stayed there all year.

As the time for school to open draws near we are making investigations and will be ready with our Junior Student Aid Fund, so that the girls we help will lose no time. We are now planning to enlarge our work and hope it will soon develop into a scholarship for each high school in our city.

What could make the Kansas City Alumnae Association better known in our community?

MILLER GORDON TAYLOR, *Theta*.
Kansas City Alumnae Association.

BOSTON ASSOCIATION

Miss Grace Thompson was married, on April 19, to Mr. George Monroe, of Dover, Mass.

The annual picnic and election of officers was held at the home of Mrs. Martha Strang, Weymouth Heights, on June 24. A large number of the active chapter were present as guests of the alumnae. Miss Jessie Grieves was elected president of the association for the coming year.

A daughter, Eleanor Frances, was born to Mrs. Frederic R. Willard (Francesca Skerry, '06), on July 25.

Evelyn Jenkins, Alpha Province President, represented the Boston Association at convention.

DOROTHY J. LYONS, *Secretary*.

PHILADELPHIA ALUMNAE ASSOCIATION

A circular letter went out to all our people this month so that I am rather short of news, although I find some changes since that time.

Emily Haydock has been made the director of domestic arts and science in the public schools of Reading for the coming year.

Nancy Bucher is being married next month and will go to the northern part of New Jersey to live.

Mrs. Nathan Arnold (M. Ashbrook) is moving to Waban, Mass., a suburb of Boston. Her husband has gone into business in Boston.

The future looms bright but also means lots of hard work in order to raise the necessary money to pay off some of the mortgage on the new house.

We would delight to hear from visiting Kappas in Philadelphia, or those who have come to live there. A card sent to Mrs. R. J. McCarthy,

Devon, Pa., will bring an answer as to time and date of the next meeting, and a cordial welcome to our gatherings.

Loyally yours,

FLORENCE C. P. MCCARTHY.

SYRACUSE ALUMNAE ASSOCIATION

Mrs. William Bray, Florence Bray, Helen Ross, Mary Evans, and Florence Nicholson attended the convention at Glacier National Park.

Clara Steinbicker, '07, Helen and Harriet Fairbanks, '21, and Polly Steele, '25, are traveling in Europe this summer with Dr. Flick's party.

Dr. Harriet Doane, '96, of Fulton, N. Y., is president of the Women's Medical Association of New York State.

Mabel Johnson, '07, of San Bernadino, Cal., spent a few days in Syracuse on her way East. Frances Thayer O'Neill, also of California, is spending the summer in the East.

Many alumnae returned for the June banquet, which was served by the Domestic Science Department at the Agricultural College.

MARRIED

Frances Hope, '21, to W. Irving Gallaher, Phi Delta Theta, of Syracuse University, on April 29, 1922.

Margaret Emily Knapp, '20, to Dr. Lee Kinner, on June 27, 1922. At home after September 1, at 243 Lake St., Elmira, N. Y.

Dorothy Q. Boggs to Prof. Joseph S. G. Bolton, Syracuse University, June 15, 1922.

ENGAGED

Irene Johnson, '21, to Edward Yarwood, of Syracuse, N. Y.

Ruth M. Trett, '22, to Burch McMorran, '21, Phi Kappa Psi, Syracuse University.

Helen Wilson, '22, to Charles Ryan, '21, Psi Upsilon, Syracuse University.

BIRTHS

Born to Margaret Knapp Nichols, '10, of Malden, Mass., a son, William Meade, May 15, 1922.

Born to Gwladys Erskine Allis, '07, a son, Douglas Erskine, July 24, 1922.

FLORENCE R. KNAPP.

ST. LAWRENCE ALUMNAE ASSOCIATION

Margaret Austin, '00, and Mrs. A. Gage Gunnison, '03, (Alice Poste) have an apartment here together this summer.

Dr. Lucia E. Heaton, '79, has opened her home and is spending the summer here. With her are Judge and Mrs. Ledyard P. Hale, '79, (Georgietta Bacheller), and their daughter, Mrs. Carl F. Pfund, '03, (Irma Hale), with her two children.

Alice G. Reynolds, Sp. '17, was graduated from the Montclair State

Normal School in June. Her engagement to Gilbert Atwood Manley, S. L. U. '16, has been announced.

Adelaide Poste, '08, who has been teaching in Schenectady, is here in town for the summer.

Elaine Manley, '14, will teach in Passaic, N. J., this coming year.

Ruth Forbes, '11, of Washington, D. C., has been spending a few weeks with Lottie Southworth, '14.

Dorothy Church, '21, has returned from Middlebury Summer School and will be in Canton until September, when she will go to Gouverneur, N. Y., to take the French position in the high school there.

Mr. and Mrs. Thomas Roop, '16, (Mildred Lalone) are in Canton for the summer.

Alice Atwood, '99, is in town for a month's vacation before returning to her work in Washington, D. C.

Mrs. John Church, Sp. '18, (Katherine Spears) has been in town several times this summer visiting her parents.

Ida Singlehurst, '17, was the guest of Louise and Alice Reynolds in July, stopping here on her way to Montreal, from which place she sailed for England to spend the summer. Her engagement to Frank Raymond Chappell, S. L. U. '17, was recently announced.

AKRON ALUMNAE ASSOCIATION

Charlene D. Fieberger was married, July 26, to Mr. Horace Greeley Miller. They left shortly afterward for Singapore, Straits Settlements, to be gone for two years. Mr. Miller is there in the interests of the Firestone Rubber Company.

Mabel Wilcox was married, July 6, to Mr. Eugene Frederick Ast, of Cuyahoga Falls, Ohio. At home after August 7, at 87 Fifth St., Cuyahoga Falls, Ohio.

Bess Emery was married, in August, to Mr. Edgar M. Kauffman, of Akron, Ohio.

Frances Whigam Nicols, of Baltimore, Md., is receiving congratulations on the birth of a daughter, Eunice Eugene.

A son, Vernon Donald Reed, was born to Elizabeth Davies Reed, on June 23.

Loretta Jones Shea has a little daughter, Harriet Aubrey, born June 30.

Pauline Risch Young also has a daughter, Virginia Mae, born May 29.

SARA BOWMAN.

COLUMBUS ALUMNAE ASSOCIATION

This letter opens another year which, aided by the inspiration of convention, should lead to the conquest of larger fields. We regret that this association was not represented at Glacier Park but circumstances prevented our delegate and alternates from attending. We had, however, the active chapter delegate and a sophomore girl (the alumnae sent as a reward for scholarship) to bring back the enthusiasm.

Our society editor's records show many Kappa brides of the past spring and we were so fortunate as to keep them all in Columbus. Sarah Robinson married Everett Parker, Kappa Sigma; Dorothy Bergin, Ed Brin-gardner, Sigma Alpha Epsilon; Althea Adams, James Thurber, Phi Kappa Psi; Helen Cashatt, Charles Drais, Phi Gamma Delta; and Violet Carter, Howard Bryan, Sigma Chi. The marriage of Martha Barrett, of Spring-field, Ohio, to Hamilton Newsome, of Chicago, Ill., has just been an-nounced. She will make her home in that city.

Mrs. Leon Meisse (Mary Ellen Yontz), of Baltimore, Ohio; Mrs. Earl Jones (Anita Thomas); and Mrs. Daniel Sanor (Lana White), of Columbus, announce the births of three future Kappa ladies. Mrs. Swinton Postal (Marie Sauder), of London, Ohio; Mrs. William Havens (Nola Dysle); Mrs. John Hamilton, Jr. (Edna Rogers); and Mrs. Fred Schwartz (Mary Farber), of Columbus, are the proud possessors of bouncing boys.

We have two new Kappas with us this year: Mrs. Gordon Silcott (Beta Upsilon), of Worthington, Ohio, and Mrs. George Crawford (Lambda). They will help to fill the places left vacant by Mary Louise Brown (Theta), who upon returning from abroad will go to Pittsburgh as dean of women at Carnegie Tech., and Mrs. C. C. Lyon (Delta), who has moved to Washington, D. C.

The thing that we have wished for, for so many years, has actually come about. The Columbus Kappas really have a house, purchased only two weeks ago. We haven't possessed it long enough to completely realize that it is true, but we hope that some of you may come this way to enjoy it with us. On account of the new four-quarter plan of the university the house will not be opened until October.

We wish to extend congratulations to the new officers and offer our hearty co-operation for the coming year.

CLARA O. PIERCE.

CINCINNATI ASSOCIATION

BIRTHS

To Clara Heins Cornell, a daughter, Ann.
To Viola Pfaff Smith, a daughter.

MARRIAGES

Helen Pauli to Otto Heberstreit, May, 1922.
Loretta Parker to James Mulford, S. A. E., May, 1922.
Carolyn McGowan, Gamma Province Vice-president, to Wilfred H. Norton, $\Phi \Delta \Theta$, July, 1922. Mr. and Mrs. Norton are to reside in Birming-ham, Ala.

The following alumnae attended convention: Gertrude Avey, Ethel Innes, Jane Schmid, Enolia Chambers, and Jeannette Striker.

TOLEDO ASSOCIATION

We are very enthusiastic Kappas, we think, considering we have no active chapter near. Our aim is to have a really live association entering into everything which is for the good of the sorority.

We meet on the third Thursday of each month, at the homes of members. We vary these every two or three months with a pot-luck supper. The last one, June 1, was at the home of Mrs. Paul Chapman (Elizabeth Griffith), where we were delightfully entertained.

We have sewed for the city hospitals and day nursery, and clothed a boy for the Federation of Charities.

We were the hostesses at a Panhellenic bridge luncheon at the Woman's Building.

Our association suffered a great loss when Iva Bishop passed away last spring. She will be greatly missed as she was one of our most active members.

Margaret Bassett has been spending the summer studying in Spain.

ORA WICKLER LEA.

INDIANAPOLIS ASSOCIATION

The last meeting of the Indianapolis Association was held at the Spink Arms Hotel, in April. Since then most of us have been enjoying the summer, each in her own way, but we will all be glad to return to the Spink Arms for our next meeting early in September. At that time we observe president's day and welcome new members. We also anticipate hearing all about convention from those of our members who were there.

Mrs. Elizabeth Bogart Schofield (Mu) was our alumnae representative. Miss Edith Hendren (Mu), Province Vice-president, Misses Sarah Jane Hunter, Dorothy Frazee and the Misses Elizabeth and Helen Clark (Beta Delta), together with Miss Marjorie Hendren, the Mu delegate, and ten Delta Kappas, all attended convention.

Miss Martha Dorsey (Delta) spent the summer in Colorado Springs.

Mrs. Minnie Coffin Wallingford (Delta) returned in the early summer from a cruise about the Atlantic and Mediterranean ports.

Mrs. Eugene Darrach, Miss Marjorie Trask, and Mrs. Ruth Hendrickson Allee were among those of our number who enjoyed trips abroad during the summer.

Miss Florence Becket is studying music abroad this year.

Mrs. Clara Orchard Mooney (Delta) left in August for an extended trip through the West.

Mr. and Mrs. R. Hartley Sherwood (Marjorie Brown, Beta Epsilon) spent the summer in the East.

Mrs. Wm. H. Remy (Isabelle Hughs, Iota) and little son, Charles Edwin, spent the summer in Boston with Mrs. Remy's parents, Bishop and Mrs. Hughs.

Mr. and Mrs. D. K. Hutchcraft (Gertrude Pruitt, Mu) have gone to Tulsa, Okla., to live.

Miss Louis Vanderworker is studying music in New York.

Guinevere Ham (Mu) and Joseph Ostrander were married July 15.

Mrs. James B. Nelson and daughter, Miss Julia Jean Nelson, spent most of the summer at Bay View, Mich.

We announce three new Kappa daughters:

Born in July to Mr. and Mrs. Fred Shortemeier, a daughter, Mary Margaret.

In August, to Mr. and Mrs. Oral Mansfield (Frieda Reem, Iota), a girl.

To Mr. and Mrs. Samuel Hanson (Esther Murphey, Mu), a girl.

MRS. RUTH MOFFETT HICKAM.

LAFAYETTE ASSOCIATION

We have held our meetings at the homes of the members, and have met once each month.

Marie Schrass (Gamma Delta '21) has accepted a position as home economics instructor at Purdue.

Leone Decker (Gamma Delta '20) will teach in Jefferson High School, LaFayette.

Juanita Follett (Gamma Delta '20), secretary of our Association, has accepted a position as pharmacist in the Lutheran Hospital at Fort Wayne, Ind.

Mrs. Marion Benedict is spending the month of August at Ocean City, N. J., and other points in the East.

Dr. and Mrs. Frank Hunter (Fern Nordstrum, Gamma Delta '15) are spending several weeks at their cottage at Lake James, Ind.

Florence Hawkins (Delta '98) is making an extended western trip, including a trip through Yellowstone Park.

Nina V. Short (Gamma Delta '15), formerly with the New York State Charities Aid Association, has accepted the position of health director of the Tippecanoe County Tuberculosis Association.

JUANITA FOLLETT.

HILLSDALE ALUMNAE ASSOCIATION

The Hillsdale Alumnae Association has failed to have personals in several issues of *THE KEY* because her corresponding secretary had not realized that she held that august and responsible position.

As I write this the August meeting is being held at Hazel Schermerhorn's cottage at Coldwater Lake, an all-day picnic with bathing and fishing, boating and eating, and continual chatter about convention. Hazel Fenton Schermerhorn, Gladys Crouse, Rachel Rosenthal, Hilda Smith, Joy Mauck Hayes, and Ruth Mauck Walrath represented our association at convention and I can't say enough about it. The whole association plans to go next time.

Many of our Alumnae are home for the summer. Doris Mauck Friedrichs, '15 of New York; Marian Willoughby, '15, of Indiana, Pa., Amy

Willoughby Frye, '15, of Willard, Ohio; Faith Elliott Rasmussen, '11, of Harrisburg, Pa.; and Marjory Crum Lyons are among our summer members, while Helen Goodrich Whelan and Dorothy Chester Cummins made us flying visits. Grace Van Aken had planned a trip through the West with her mother but has spent the whole summer at home on crutches because of a sprained ankle.

Fannie Northrop Reynolds (Mrs. L. B.), '06, of Kansas City, Mo., with her husband and three children spent a week in Hillsdale in August.

Word has just been received of the sudden death of Julia Ball, sister of Ella Ball, one of Kappa's earliest members, at Keuka Park, N. Y.

The Hillsdale Association is ready to start on some constructive work this fall. We hope to have much to report to *THE KEY* in every issue.

RUTH MAUCK WALRATH.

MADISON ALUMNAE ASSOCIATION

Madison Association of Kappa Kappa Gamma was very unfortunate, indeed, in having plans go awry and consequently not being represented at convention. We are awaiting the report of Josephine Walters, the delegate from our active chapter, with great interest. Miss Rosalie Geer, editor-in-chief of *THE KEY*, paid Madison a brief visit directly after convention and was most enthusiastic in her praises.

Elizabeth Wooton has arrived from California, where she was the guest of Ruth Dillman, and is now visiting her parents before she leaves again for New York City.

Eleanor Sheldon expects to attend the Katherine Gibbs School of Secretarial Training in Boston the coming year.

Harriet Bridgman is engaged in work with the Public Welfare Association of Madison.

Dolly Sheehan is also in Madison training for nursing at the Madison General Hospital.

Mary Ella Ferguson is in charge of the Women's Department of the Robinson Power and Bond Company.

Helen Parkinson Levis, who has lately returned from Japan, is spending August with her parents. Agnes Sarles Wallin has also been the guest of her parents.

Elyda Main, who has just returned from a tour of the West, will again go to Waukesha this fall, to take up her work as teacher of music in the public schools.

Lulu Saul and Catherine Heath were both in attendance at summer session this year and lived at the house.

Mary Swenson North is moving to Madison from Ohio and building a beautiful new home on the shores of Lake Mendota near the new home of her parents, Mr. and Mrs. Magnus Swenson.

Weddings of interest to us all are:

Alice Bemis to Dr. Francis H'Doubler, on August 5.

Dorothy Krueger to Mr. William Hiecke, on August 19.

Adele Barwig to Mr. Olaf Johnson, on August 29.

The marriage of Rachel Commons and Wren Middlebrook will take place in October.

Janet Butler and Ralph Horton have announced their engagement, but no date has been set for the wedding.

The repairs which are being put on the chapter-house are dressing it up nicely for the opening of school when many will be surprised to see the new white decorations on our stately red brick house.

BRYNHILDE J. MURPHY.

ST. LOUIS ASSOCIATION

Our new officers for the coming year are: president, Mrs. Ed V. Orr; vice-president, Mrs. Charles A. Houts; secretary, Mrs. Frank W. Ives; assistant secretary, Miss Anita Weakley; treasurer, Miss Katherine Burlingame.

Mrs. Clifford Scott, Theta chapter, is leaving St. Louis to make her home in Chicago, where Mr. Scott's business calls him.

Miss Ruth Eversole, of Theta chapter, who has been living in West Palm Beach, Fla., for the last two years, spent the summer abroad.

Miss Adelaide Simons, of Theta chapter, has chosen September 26 for her marriage to Mr. Samuel Caldwell Mitchell, of Memphis, Tenn.

Mrs. W. P. Nelson of New Orleans, who was Hally Prentis of Theta chapter, was a visitor in St. Louis this summer.

Mrs. W. B. Swahlen, formerly Luella Gilmore of Iota chapter, who has been living in Detroit, recently returned to St. Louis to make her home.

Mrs. Anne Straton Miller, Beta Xi chapter, formerly of St. Louis, was married August 18 to Mr. Thomas Holden of New York.

Mrs. James McNaughtan, Theta chapter, spent the summer in New Hampshire.

KATHLEEN SISLER.

KANSAS CITY ALUMNAE ASSOCIATION

Since the April KEY we have had our regular monthly luncheon in May, and our annual June picnic and election of officers. We are very proud to report 110 paid-up members in our association. These women represent eighteen chapters of Kappa Kappa Gamma.

Mrs. J. L. Harrington (Omega), Miss Jane Swofford (Theta), and Miss Florence Carvin (Gamma Alpha), delegate, attended convention at Glacier Park.

Through the help of our association three worthy high school girls were able to finish their work this year. These girls were recommended by the sponsors in the different high schools and were supplied with clothing, books, and money for lunches.

Several of our members were married during the spring and summer:

Amelia Palmer, Theta, to Forest Gillham, Kappa Sigma.

Virginia Kelley, Theta, to Lisle Cook, Beta Theta Pi.

Twylah Stowers, Omega, to Miles Gates, Sigma Alpha Epsilon.

Mrs. Z. T. Williams (Jessie Lea Messick, Omega) has a new daughter.

Mrs. T. P. Palmer (Margaret McFadden, Omega) has moved to Kansas City, Kan. She has three children.

Mrs. William McCreary (Marguerite Foster, Theta) has returned from Orange, Tex., to make her home in Kansas City.

FLORENCE CARVIN.

DENVER ALUMNAE ASSOCIATION

Social Activities:

Members of the association and active members of Beta Mu chapter in Denver, gave a rushing party August 24, at the Lakewood Country Club.

Social Service:

Our association will form, for another year, a section of "The Needle-Work Guild of America." This obligates us to provide in the course of the year one hundred ten new garments. May Carroll Fry (Mrs. J. H., Beta Mu), has given most capable direction to the work of "The Guild" in Denver during the past year. Last year, cloth for children's garments was purchased and the garments cut out and distributed at the association meetings to the members, who worked on them at the meetings or took them home to finish.

The privilege of providing birthday cakes and knitted afghans for our special ward at Fitzsimmons General Hospital is being enthusiastically carried on. Thus far, about thirty robes have been knitted for the men in this ward.

Financial Activities (to raise moneys for the Student Aid Fund, for Beta Mu's new chapter-house and other local interests):

During the summer, the members of the association met from time to time to sew for the bazaar we plan to hold at Christmas time.

In the spring, a movie benefit was conducted, from which two hundred dollars was realized.

In June, a series of single tables of bridge was had in the homes of different members of the association to raise funds. This plan proved quite successful.

Personal Items:

The engagement of Elfrida Van Meter (Beta Mu), to Dr. R. G. Packard, Phi Beta Kappa, has been announced. The wedding will take place September 20. They will make their home in Denver.

The engagement of Louise Sanborn (Beta Mu), to Walter McDowell, Alpha Tau Omega, has been announced. They plan to be married during the Christmas holidays.

Born:

To Mr. and Mrs. Harry Boot (Sarah Roach, Beta Omicron), in May, a son.

To Mr. and Mrs. John Cunningham, Jr. (Katherine Knisell, Beta Mu), in August, a daughter.

To Mr. and Mrs. P. B. Whitney (Gladys Clarke, Beta Mu), in August, a son.

To Mr. and Mrs. C. L. Ireland (Bessie Low, Beta Mu), in June, a daughter.

Bereaved:

Charlotte Powell Goddard (Mrs. R. H., Mu), in the death of her mother, April 19.

Hattie Babcock Sechrist (Mrs. A., Sigma), in the death of her husband, July 11.

Caroline Fisher Mc Cless (Mrs. N. O., Omega), in the death of her husband, August 17.

Sarah Howland Healy (Mrs. E. C., Beta Tau), in the death of her mother, in August.

Inez Taggart Parce (Mrs. J. Y., Omega), in the death of her mother, in August.

Maybelle McCandliss (Beta Mu), who was instructor in French at the North Side High School in Denver the past year, sailed August 30, for Honolulu to teach there in Oahu College. She taught in this college during the years of 1918-20, and was asked to return this year. Oahu College is a private school, founded eighty years ago by missionaries for their children. Although the school is for white children primarily, a few Orientals and Hawaiians are admitted if they can pass an examination in English.

Jessica Shadomy Matlock (Mrs. W. A., Mu), with her son Bruce and her daughter Jessica, returned August 20, from a six weeks' trip to Honolulu.

Virginia Van Meter (Beta Mu) finished her internship at R. W. Packard Memorial Hospital in Sayre, Pa., and returned to Denver to practice in surgery with her father, Dr. S. D. Van Meter.

We welcome to the Denver Association, Agnes Johnson Warner (Mrs. J. H.) and Ruth Kadel Seacrest (Mrs. J. W.), both from Sigma chapter.

Mr. and Mrs. Hassel W. Smith (Helen Adams, Upsilon), who have made their home in Denver for the past two years, have moved to Los Angeles, Calif.

VIRGINIA SINCLAIR.

CEDAR RAPIDS ALUMNAE ASSOCIATION

The last regular meeting of the Cedar Rapids Alumnae Association was held at the home of Mrs. Stanley Meek (Grace Williams, Beta Zeta).

Election of officers was held. Mrs. Harold Trewin (Muriel Arthur, Beta Zeta) was elected president, and Mrs. Horace Hedges (Coleen Johnson, Beta Zeta), secretary and treasurer.

With a few active girls at home this summer, we feel quite as if we were renewing our youth.

On two occasions we had Kappa picnic suppers and they proved to be a success.

Our first one we held at Ellis Park, with all the children included, which made quite a throng.

Just Kappas and "Kappa men" were invited to our next supper, which was held at the home of Mr. and Mrs. Horace Hedges. We were delighted to find we numbered twenty-nine, our twenty-ninth being Mr. Conaway, whose Kappa wife is visiting in Seattle this summer.

Miss Margaret Hill, an active Beta Zeta girl, entertained the Cedar Rapids Kappas and young visitors from Iowa City at a garden-party tea this summer. The beautiful lawn of the Hill home was a lovely setting, and Miss Hill a most gracious hostess.

We are pleased to have Mrs. Wheeler (Mildred Rorer, University of Oregon) with us again after her extended visit in California, and to welcome Mrs. Richard Drake (Rowena Evans, Beta Zeta), who has come as a bride, to make her home in Cedar Rapids.

COLEEN JOHNSON HEDGES.

LINCOLN ASSOCIATION

The Lincoln Kappas have been so happy to have their own Mrs. Westermann with them. To have convention news so direct, was next to being there in person. Many lovely luncheons, teas, and various other parties were given in honor of our Grand President and we are sorry to have her leave us now.

In spite of the fact that the regular business meetings were abandoned during the summer months, the association has taken great strides. We are proud and happy to announce that we have a chapter-house really worth mentioning. It is a large frame structure, newly built and along the lines most adequate for a fraternity. And it is a treat to know that the active girls can have a real home.

A brief description of the house will serve to show how convenient and lovely it is. The house has fifteen bedrooms; plenty of linen closets; two bathrooms, and one large hallway complete the upper floors. Each bedroom is finished in mahogany with two bracket lights on the walls and a center light and in the majority of the rooms there are two large windows. A great stairway leads up from the reception hall on the ground floor. The stairway is of mahogany. To the right of the reception hall is a long living-room with a den at one end. To the left is a music-room, a long dining-room, and to the rear is the kitchen, maid's quarters, bath and linen closets. In the basement is a large room, floored and fitted suitably for dancing and as a chapter-room.

The signing of the lease was a thump of joy in every heart, for our girls have been more than patient, living in crowded condition in other houses. We have leased this property for a period of three years, at the end of which time we will have sold our \$30,000 in bonds and will be ready to build our own home. We also feel that our girls will be more qualified to select and make plans for our own home after having lived in a "brand new" house which was constructed especially for a fraternity.

It added much to our enthusiasm to have Mrs. Westermann here when

we signed the lease and to go over the whole situation with us. And I'll say right now that anyone who feels like parting with a few dollars in return for a gilt-edged per cent on our bonds, need only to address Lincoln Alumnae Association to that effect. We have them from \$50 up, and can assure you a regular guarantee endorsed by the Lincoln Trust Company, of Lincoln, Neb. The bonds bear six per cent semi-annually and at the end of fifteen years the entire amount will be paid. Apply to Mabel Lindley, 1715 South 20th St., Lincoln, Neb.

We are pleased to announce that Miss Louise Pound has again annexed the city championship in golf.

On June 27, occurred the wedding of Helen Shepherd to Daniel P. Dereig. They spent their honeymoon at the resorts in Minnesota.

Ruth Kadel, president of the active chapter last year, was married in June to Joseph Seacrest and now resides in Denver, Colo.

Mrs. Robert Dunn (Dorothy Ryons) is being congratulated on the birth of a daughter.

Mrs. Fred Wells (Fay Teel), a daughter, and Mrs. Raymond Farquhaar (Josephine Burkett), a son.

Helen Curtis has just returned from a six months' cruise of the Mediterranean and a sight-seeing trip on the continent. At present she is supervising the re-finishing of the furniture, ready to be placed in the new home.

Adelaide Elam, teacher in the Lincoln schools, has been travelling through the Northwest and in California.

Lilian Shinn (Sigma), of Chicago, is visiting friends in Lincoln.

MRS. GAYLE VINCENT GRUBB.

BOISE ALUMNAE ASSOCIATION

The Boise Alumnae Association was formed only about a year ago, and this is our first letter to *THE KEY*. There are only a few of us, fourteen in all, but perhaps for that reason we feel very close together, more so than might be the case in a larger group. As the chapter at our State University has only been in existence a few years, our alumnae members are necessarily from many different localities, and it is interesting to compare notes as to our university days.

We are honored in having as one of our members the wife of the governor of our state, Mrs. D. W. Davis (Nellie Johnson of Hillsdale). The wife of our mayor is also one of us.

Our most notable achievement was the Panhellenic ball held during the holidays last year. This was the first affair of its kind to be held in Boise, and was planned and executed entirely by the Kappas. We had a beautiful party, splendid music, and a fine buffet supper. In the receiving line were representatives from all fraternities having members in Boise. Kappa was represented by Mrs. Frank Ensign (Ann Plank, Upsilon) to whom much credit is due, as she was also the very efficient chairman of the committee on arrangements. Through the sale of tickets we

were able to give a substantial sum to the Scholarship Fund of the College Women's Club.

We also held a cake sale recently, to help our chapter at the university make some improvements on their house. It was such a success that we are planning more of them in the near future.

This summer we have been fortunate in having several charming Kappa visitors to Boise. Mrs. George Tunison of Omaha (Otis Hassler, Sigma) visited Mrs. Hal Cornell (Evangeline Casey, Sigma). Mrs. Mabel Sweeney Smith (Beta Kappa) of St. Maries was the guest of Lucie Davis.

Miss Edna Wright (Sigma), of Birmingham, Ala., was also a guest in Boise. In their honor we have had many delightful gatherings.

There were also several pretty showers for Helga Marie Anderson, who was married, August 9, to Mr. Frank H. Strong. They will spend their honeymoon in the Hawaiian Islands and will live in Sandpoint, Idaho.

We are planning to have meetings every month this winter and we hope to accomplish a great deal.

MAUD SHAW SHERMAN.

WALLA WALLA ALUMNAE ASSOCIATION

We have three weddings to announce this time. Mildred Smith, Gamma Gamma, and Bruce Clingan were married in June and are living in Denver. May Springer, Gamma Eta, and Edward Cornwell were married in July; also, Willena Long, Gamma Gamma, and Forest Cation.

Phoebe Kimball is on the coast, teaching in a summer camp for girls.

Sylvia Van Hollebeke Neal, of Granger, Wash., is here for the summer visiting her mother.

GERTRUDE MORFITT EVANS.

LOS ANGELES ALUMNAE ASSOCIATION

The personal news notes of our association are very meager this time, being a record of vacations chiefly.

Our year closed with a tea at the California Country Club, and since then our members have scattered, literally, to all corners of the earth.

Ellen Andrews and Helen Mosher are travelling abroad with their respective families.

Harriet Hunt's marriage to Phil Bard took place in the lovely Hunt gardens at Pasadena, June 29, and was a very beautiful affair. They, too, are now in Europe.

Eleanor Anderson became the bride of Edward Sheehan in June also, and they have been summering in British Columbia.

Florence Gates was married to Mr. Frank Baldwin and they are just home from an extended trip up the Pacific Coast and Alaska.

We are looking forward now to our first meeting in October and the beginning of our new year.

Best wishes to all associations and active chapters for the coming year.

DOROTHY HANNA MURRAY.

PI ALUMNAE ASSOCIATION

Now that the summer vacation months are about over and college has again opened, Pi alumnae will give their annual tea for the active chapter on Wednesday, August 23, at the home of Mrs. Lucius Norris in Piedmont. We are all looking forward to it with a great deal of pleasure as it is the one big party each year which most of the girls attend, and then too it gives us a chance to meet all of the members of the active chapter and their prospective new members.

Our association president, Anita Crellin, has just returned from a several weeks' tour of the entire United States and part of Canada. While in Baltimore she met Helen Weston Fenhagan.

Five boys and five girls have been added to the list of Pi alumnae babies within the past few months. Florence Crellin Griffith, Mildred Porter Rowe, Myrtle Henrici Hass, Bernice Carr Kice, and Sara d'Ancona Hunt claim the sons, while Marie Kinkelin Otto, Emily Harold Milligan, Norma Thayer Raggio, Mildred Knox Moore, and Esther Witter Janney are the mothers of small daughters.

After completing her course at Miss Prince's School in Boston, in June, Virginia Cohn returned to her home in Alameda, where she has been spending the summer months. Mary Louise Michaels returned about the same time from Bryn Mawr, where she completed a postgraduate course last semester.

Among our members in Europe are Mrs. William Orrick, who is accompanying her husband on an extended tour of the continent, and Elizabeth Gray Potter who has gone to Paris to take charge of the American Library there for a year.

Friends of Margaret Witter Page are glad to welcome her back to Berkeley, where she is visiting her mother.

Eleanor Bennett, Pi Association's delegate, thoroughly enjoyed the convention and before returning to California visited relatives in Seattle and Portland. The active chapter and the alumnae are planning to hold a convention meeting at the chapter-house in Berkeley.

MIGNON HENRICI LUFF.

Kappas who met Dean Elizabeth Freeman Fox at Convention will be interested to know of her marriage to Mr. Edgar E. De Cou at Madison, N. J., on September second. Mr. and Mrs. De Cou will make their home in Eugene, Oregon.

COLLEGE NEWS

HELEN BOWER, *Department Editor*

One of two new trustees at Barnard College this year is Mrs. Alice Duer Miller, prominent "Kappa Known to Fame." Miss Virginia Gildersleeve, who has been in France during the summer, has resumed her duties as dean. The trustees in the budget for their part of the work of Columbia University for the coming year have provided several changes which, they say, will make for distinct advances in the work and life of the college. Particular attention is given housing, food and medical supervision, personal counsel and student activities.

Members of the Oxford Union will come from England to the United States this fall to debate with teams from American colleges. American methods of conducting debates, whereby the effect produced on a lay audience is taken into consideration by the judges, may not be favorable to the visitors, but the English say that they will be "game." An American team which went to Oxford recently went up against the system there, whereby the vote of the Union on the arguments of the debaters did not represent the opinion of the house. "Turn about is fair play."

A new departure in collegiate journalism will be the rotogravure section now planned as part of the Saturday edition of the *Daily Princetonian*, official publication of Princeton University since 1876. It will contain four to eight pages of high grade photographs, providing a comprehensive and graphic review of university life. Last spring the *Daily Princetonian* absorbed the *Princeton Pictorial*, placing officials of the latter on its own staff.

Whether the appearance of so many "Young Intellectuals" has made it seem expedient, or not, nonetheless a course offered this fall at Columbia University is described as "the first attempt of any American university to interpret and evaluate literature in the making," in offering both in the classroom and as a home study a course in current literature, aimed to guide the general reader "to the most significant books published during 1922-23, here

and abroad, in fiction, poetry, drama, and general literature." Lloyd R. Morris, writer and critic, will conduct the lectures, under the direction of the Extension Department. An arrangement with various publishers will enable Mr. Morris to speak on the newest books at the time of their first placement for sale. Here's where the well-known "blurb" will die an awful death.

KAPPAS IN BOOK AND MAGAZINE

LALAH RANDLE WARNER, *Department Editor*

MAGAZINES

- "Aren't You Glad You're Not Your Grandmother?" by Dorothy Canfield Fisher, Beta Nu and Beta Epsilon, '99, in *Good Housekeeping* for April, 1922.
- "Uncle Ellis," by Dorothy Canfield Fisher, Beta Nu and Beta Epsilon, '99, in *The Outlook* for March 22, 1922.
- "What Goes Up," by Dorothy Canfield Fisher, Beta Nu and Beta Epsilon, '99, in the *Woman's Home Companion* for April, 1922.
- "As The Twig Is Bent," by Dorothy Canfield Fisher, Beta Nu and Beta Epsilon, '99, in *Good Housekeeping* for September, 1922.
- "The Evolution of a New Social Technique," by Helen Bullitt Lowry, Beta Chi, '10, in *Harper's Bazaar* for May, 1922.
- "When the Honeymoon Is A-Shinin'," by Helen Bullitt Lowry, Beta Chi, '10, in *Harper's Bazaar* for June, 1922.
- "The Prologue to Adventure," by Marie Beynon Ray, Beta Sigma, '08, in *Harper's Bazaar* for June, 1922.
- "Quick Cooking by Steam," by Jenoise Brown Short, Eta, '08, and Gladys Beckett Jones, in *Pictorial Review* for September, 1922.

STUDENTS' AID FUND

MRS. RICHARD H. GODDARD, *Chairman*

Those who have met Mrs. Goddard in person—more who have known her through letters—and the others who would like to know her, which includes the remainder of the fraternity, will be interested in her page which will appear in every issue of THE KEY.



MRS. RICHARD GODDARD
Chairman Students' Aid Fund

We offer this photograph as evidence that a chairman may remain cheerful. No amount of detail work can exhaust Mrs. Goddard's energy or her warm personal interest in the girls throughout the country whose problems she shares.

The Students' Aid Fund gratefully acknowledges the following contributions:

Beta Iota Alumnae Association	\$200.00
Akron Alumnae Association—Additional for the "Helen Hester Hay Memorial"	\$ 50.89

Chicago Alumnae Association	\$ 50.00
Beta Theta Alumnae Association	\$ 25.00
Indianapolis Alumnae Association	\$100.00
Cleveland Alumnae Association	\$125.00
Detroit Alumnae Association	\$100.00
Muncie Alumnae Association	\$ 10.00
Bloomington, Ind., Alumnae Association	\$ 10.00
New York Alumnae Association	\$ 84.50
Falls Cities Alumnae Association	\$ 30.00
Denver Alumnae Association	\$ 75.00
Syracuse Alumnae Association	\$ 75.00
Beta Gamma Alumnae Association—For the "Beta Gam- ma Fund"	\$200.00
Kappa Chapter	\$ 25.00
Ella Blakeslee Wallace, Beta Tau—"Kappa Symphonies"	\$ 25.00
Julia F. McGuire, Lambda	\$ 10.00
Daisy Orton Harrington, Omega	\$ 25.00

Applications have been received and approved, as follows:

Member Gamma Gamma Chapter	\$100.00
Member Beta Tau Chapter	\$100.00
Member Upsilon Chapter	\$100.00
Member Beta Omega Chapter	\$300.00
Member Kappa Chapter	\$150.00
Member Beta Pi Chapter	\$500.00
Member Xi Chapter	\$150.00
Member Beta Theta Chapter	\$100.00
Member Psi Chapter	\$250.00
Member Beta Omega Chapter	\$300.00
Member Kappa Chapter	\$350.00
Member Kappa Chapter	\$300.00
Member Beta Zeta Chapter	\$500.00
Member Gamma Epsilon Chapter	\$300.00
Student, University of Oregon	\$100.00
Student, University of California	\$150.00
Student, University of Colorado	\$200.00

HISTORY OF K K G

Our new history will be out in book form about Christmas time. Mrs. Florence Burton Roth has been working on it for several years, getting her material from the records of bygone days, and editing special articles written by experts. She told us about it at convention, and her account was so interesting that every one who heard it wanted to order several copies immediately. It will be amusing and instructive—a book that every Kappa must own. We shall sell it to you at cost price. It is not a money-making scheme. It is to teach you the history of your fraternity. We shall have to know how many copies to order from the publisher, Mr. Banta. It will cost about \$2.50 a copy. Therefore, will you fill in the blank given here and mail it to Mrs. Roth immediately? Ask your convention delegate to tell what Mrs. Roth said about it at convention.

Mrs. Florence B. Roth,
629 Myrtle Street,
Eric, Pa.

I wish to order copy
 copies of the *History of Kappa Kappa*
Gamma, to be delivered to me at the address given below. Money
sent when notified of price.

Name.....

Address.....

PHI BETA KAPPAS, 1920-22

- Phi—Dorothy Lyons and one other.
Beta Iota—Janet Young, Jean Knowles, Isabel Fussell.
Beta Tau—Ruth Trett and two others.
Beta Beta—Hazel Northrop, Amelia Wood, Dorothy De Graff.
Beta Upsilon—Margaret Moore, Anagrace Cochran, Virginia Armstrong.
Iota—Grace Ruthenberg, Mary Fraley, Mary Frances Grose.
Beta Delta—Maud Hinchman.
Eta—Helen Dick, Annie Lee Duncan.
Theta—Mary Charn, Frances Ross, Pamela Shackleford.
Beta Xi—Helen Mather, Dorothy Broad.
Omega—Leone Forney.
Beta Mu—Dorothea Toerge.
Beta Omicron—Ione Brady.
Gamma Iota—Grace Able.
Gamma Gamma—Helen Van Nuys, Lulu Holmes, Katherine Sickles.
Psi—Margaret Thilly, Helen Bateman, Irene Heble.
Sigma—Josephine Strode.

A PANHELLENIC HOUSE BY 1923

In the spring of 1920, at the inspiration of Winifred Hill Maxfield, Pi Beta Phi, the alumnae groups of the eighteen Panhellenic fraternities in New York City were invited to a meeting at Lillian McDowell Hanan's, Pi Beta Phi, to form a city Panhellenic association, largely for social purposes. Immediately upon organization at the meeting held at Agnes Merrill Scott's, Delta Gamma, the following fall, the potential power of this new society was felt and it soon became apparent that the unification of more than three thousand women could and should stand for something of real value. At the spring meeting in 1921, it was decided to present a scholarship cup to the fraternities at Adelphi and it was suggested by Minnie Royse Walker, Kappa Kappa Gamma, and was later decided that the Panhellenic Association of New York City should have a clubhouse—a house where some

could live permanently and others might have temporary accommodations. To that end a house committee was appointed to investigate what other associations and clubs had done and to suggest what it was possible for the Panhellenic Association to do. The committee as appointed was: Frances Selden, Delta Gamma, chairman; Margaret Herdman, Kappa Kappa Gamma; Helen Brickman, Delta Gamma; and Helen Henry, Alpha Omicron Pi. The following fall circumstances made it impossible for Miss Selden to continue the chairmanship. Miss Herdman was appointed chairman and Mrs. Georgiana Hess, Kappa Alpha Theta was added to the committee. Later, Miss Brickman resigned, and Miss Carolyn Olney, Pi Beta Phi, and Mrs. Nina V. D. Williams, Alpha Phi, were added.

The committee put in a strenuous winter and spring investigating. Two other similar clubs already in operation in New York City are the Bryn Mawr Club and the Smith College Club. They were each financed, and are both operated, by the members for the use of members and friends. They are both builtover houses and both are now too small for the demands made upon them, although the Smith College Club accommodates over seventy-five. The Harriet Judson Memorial Home in Brooklyn and Tatham House in New York, both run by the Young Women's Christian Association, though larger than the Smith College Club, have long waiting lists and say that if they were twice as large they could easily fill all their rooms. In the case of the Harriet Judson Memorial Home this means accommodations for over four hundred people. The Harriet Judson and Tatham House are not business propositions. The original cost of the buildings was a gift and they are exempt from tax payments thus making the management of them an entirely different problem from that of the management of the Panhellenic House. However, they each make a small profit each year and they charge the low rates of \$4.25 up for room and board. The Parnassus Club of New York City is a wholly business undertaking and has succeeded so well that their field of operation has been greatly extended since the beginning. The rates charged here are \$16.00 up for board and room. Smith College Club was opened a year ago last October, and the first fiscal year was successfully completed; the interest on the stocks and bonds being paid, and the mortgage reduced leaving a surplus for a sinking fund.

The size of a clubhouse is determined by a number of different factors seemingly independent, and the experience of these clubs led the house committee to the conclusion that there was more to be lost by building too small than too large. The size depends first on the room rent you wish to charge, second upon the income you wish the building to yield, and third, the number you wish to accommodate, taking for granted, of course, that you wish the clubhouse to be well-built and self-supporting. One might think that the amount of money to be spent might have something to do with it, but strange to say it is a secondary matter with a building of this kind. All these factors were carefully considered and a house accommodating approximately four hundred was recommended. An interesting point is that a house of this character accommodating one hundred will just pay expenses. The income from rents over one-hundred increases the profit or reduces the room rents.

Because other clubs had rebuilt, the cost of rebuilding was investigated and was found to be very high—sometimes fifty per cent of the original cost of the property with a result that is never entirely satisfactory, necessarily being a combination of compromises, and in addition requiring a constant outlay for repairs and replacements. Even in the case of a small club this seemed to be a serious factor, so that regardless of size it seemed wisest to build.

Closely connected with the question of building is that of financing, and groups of individuals cannot consider the raising of money until they are incorporated. The house committee has incorporated as the Panhellenic House Association, Inc., but the power of management is vested in the stockholders in proportion to the amount of voting stock owned. It has been suggested that this voting stock be owned in equal amounts by the different fraternities in the names of individual members. The reason for incorporating this way is that it places the responsibility of management on the investors, and the conclusions of the house committee were that the cause of lack of success where it was found in New York clubs was due to the fact that the management was not in the hands of the investors who are naturally the ones most vitally interested in the financial success of the undertaking. It was deemed wise to limit this control to Panhellenic members so that the purpose and ideals for which the Panhellenic

House is to be built cannot be sacrificed to a purely profit-making business. About \$300,000 will be raised by the sale of stock—\$200,000 preferred bearing six per cent interest, and \$100,000 common bearing dividends—and \$600,000 by the sale of bonds and mortgages. The stock will be sold in shares of \$50.00 par value.

To discuss the urgent need for right living conditions for the younger graduates who come to New York City each year, to tell of the exorbitant prices they have to pay now, to enumerate the advantages of a Panhellenic House as planned would be impossible in this article, the purpose of which is to let every fraternity woman know what has been done so far, and to get from her an individual expression of opinion. If you are interested, won't you send in your answers to the following questions:

1. Will you want to live in the Panhellenic House any time in the near future? When?
2. Will you want to take advantage of transient accommodations? How often? For how long a time?
3. Do you think that the house should be open to college women other than fraternity women?
4. Will you, and fraternity women of your acquaintance, be interested in buying stocks or bonds in the corporation?
5. Would you like your fraternity to have its national headquarters in this building?

In answering, please give your name, address, college, fraternity, and maiden name, if married. Send the questionnaire to Mrs. H. D. Williams, 600 Lexington Avenue, New York City.

MARGARET M. HERDMAN, *Chairman.*
New York Panhellenic House Committee.

A MESSAGE FROM THE NATIONAL PRESIDENT

*To the Members of Kappa Kappa Gamma,
Greeting!*

Before me is the map showing the location of our forty-eight chapters. As I look it grows large and in the place of each dot I see a group of girls and women, the members of the chapter whom I have known during thirty years. Experience and memory can take me no farther, but imagination causes each group to increase until it includes all who have been members of the chapter, from Delta with its throng of nearly five hundred, to Gamma Iota with its one-year circle. To every member of the fraternity to whom the words of this greeting come I would have them mean a personal handclasp and a mutual renewing of vows that we may together promote the welfare of Kappa Kappa Gamma.

I have a special message for the active members. The growth of the fraternity, in numbers, is in your hands. The character of the fraternity is being determined by the girls you choose. Do not let petty considerations outweigh character and ability. As soon as possible after the opening days concern yourselves primarily with your college work. You are college women first. Your fraternity, however, may well occupy a large place in your interests for, if rightly used, it is a source of inspiration, a character builder, and it affords constant opportunity for service to the larger group which is your college. A girl who is not more valuable to her college because she is a fraternity girl has missed something which her fraternity should have taught her.

There is much which I wish to say to the alumnae. I deny utterly that the fraternity is merely for girls in college and that it has small place, or none at all, in the life of the woman whose college days are over. Kappa ideals are ideals for a lifetime. To have had a glimpse of them during active chapter days makes a member a debtor to the girls who come after her in the chapter. She fails to pay that debt if she has no interest in her chapter's welfare. The problems of the fraternity and its expanding work are too great for the girls in college. Do you know how serious the question of housing is in most of our colleges? It is neces-

sary that the alumnae make the business plans and provide the financing for chapter-houses. Do you know that some of the finest girls in the fraternity could not graduate except for our splendid Students' Aid Fund? This Fund has been provided largely by the alumnae and associate members working through our sixty-four alumnae associations. Then there are the Endowment and the Relief Funds and the proposed Panhellenic House in New York City, beside the French work which still requires some support. Kappa's undertakings are sufficiently varied to appeal to every alumna and associate member no matter what her personal interests are or how occupied she may be with other worthwhile things.

My last word is for the many girls who, by the time this number of the KEY reaches the chapters, will be pledged to membership in the fraternity. There are such possibilities in you, each one! You may mean so much to the fraternity and the fraternity so much to you, or it may all mean so little. A single chapter has chosen you, individually, and you, with few exceptions, have chosen a single group of girls with little thought beyond your personal liking for those girls. I wish that I could make you realize at the outset that your chapter has spoken for forty-seven other chapters in inviting you to membership and that you are joining, not a local group, but a fraternity widely distributed, numbering its members by thousands and having a history covering fifty-two years. Kappa Kappa Gamma comes to you as a great inheritance, a trust. Here it is, as it has been built up by the girls who have been members through the years. It is yours to use and to enjoy. But it is also yours to pass on as you build your personality, your scholarship, your achievements, into it, and choose the girls to come after you. Only in the measure that you build your best self into this structure which is your fraternity will you realize what Kappa Kappa Gamma may mean.

To the Members of Kappa Kappa Gamma,
Greeting!

MAY C. W. WESTERMANN,
National President.

ESTABLISHED IN 1876

J. F. NEWMAN

Official Fraternity Jewelers

Manufacturers -:- Importers -:- Designers

of

Fraternity Badges
Fraternity Jewelry for Men
Fraternity Jewelry for Women
Army and Navy Jewelry
Diamond Engagement Rings
Chapter Wedding Gifts
Medals and Trophies
Gold Foot Balls, Base Balls, Etc.
Society Pins, Rings, Keys
Classpins and Rings
Silver and Bronze Memorials

Originators of the Chapter Roll of Honor
in solid metal, showing names of members
in service. In use by Chapters, Clubs,
Lodges, Banks and Business Houses.

Please send catalogues on subjects checked on
above list of productions.

Name..... Fraternity.....

Address

(Tear out page and mail to nearest office)

KANSAS CITY
105 E. 11th Street

NEW YORK
11 John Street

CHICAGO
31 N. State St.

SAN FRANCISCO
150 Post Street