

the **Key**  
KAPPA  
KAPPA GAMMA

Volume 106, No. 3

Fall/Winter 1989





# Call To Convention



## Come to Kappa's 58th Biennial General Convention.

Join Kappas "Deep in the Heart of Texas" June 27 - July 1, 1990, at the Fairmont Hotel in Dallas for an experience you will always remember.

This is an opportunity for all Kappas to be active participants in the Fraternity's decision-making process — to elect officers for the next biennium, transact Fraternity business and have a part in shaping its future. Kappas of all ages, actives and alumnae, from Canada and the United States will meet to renew old friendships and make new ones, to learn and grow together, to feel the inspiration and motivation of Kappa ideals and Kappa leaders, and of course to have fun — enjoying the locale, events, and people.

Plan to experience the warm and friendly hospitality of Texas. Even the skies are Kappa blue! Come to Convention — your opportunity to be Deep in the Heart of Kappa!

—Kay Smith Larson,  
BII—Washington,  
Fraternity President

A tribute to the early families of Dallas—by Miley Tucker Busiek, BE—Texas. Dedicated in October 1989 and commissioned by the Rosewood Corporation, this new Dallas landmark in the Crescent Court Complex faces the city skyline.

Top photo courtesy of the DALLAS CONVENTION and VISTOR BUREAU.

Photo by Lindsay Brown



# the Key

KAPPA  
KAPPA GAMMA

## FEATURES

Candles on the Water .....	8
Tours of Kappa Holiday Homes .....	20
Celebrating the Arts .....	23

## DEPARTMENTS

Fraternity News .....	2
In Memoriam .....	12
Heritage .....	13
Profiles .....	16

## SPECIAL SECTIONS

"In the Honors of One ..." .....	5
KEEP SAFE .....	10
Adelphe Campaign .....	14
Fraternity Directory .....	27

*The first college woman's fraternity magazine,  
published continuously since 1882.*

The mission of *The Key* is:  
To inform, inspire, and challenge  
To sustain and nurture member loyalty and interest  
To recognize individual, group, and Fraternity accomplishments  
To provide a forum for an exchange of information and opinions  
To be a permanent record.

Copyright © 1989 Kappa Kappa Gamma Fraternity. Printing and Design by EBSCO Media, Birmingham, AL. KKG Headquarters, P.O. Box 2079 (530 E. Town St.) Columbus, OH 43216; Telephone: (614) 228-6515; FAX: 614-228-7809.

For advertising rates contact Susan Schmitt, Advertising Manager;  
4001 Wetherburn Way; Norcross, GA 30092; (404) 441 0946



### ON THE COVER:

"Ultimate Ornaments" for the Holiday Season created and photographed by Carrye (Betsy) Schenk. See Profiles, page 19 and Holiday Homes Tours page 20.

### Editor

Cynthia McMillan Lanford, ΓΠ

### Business Manager

J. Dale Brubeck, ΓK

### Associate Editor

Lois Catherman Heenehan, ΒΣ

### Advertising Manager

Susan Frech Schmitt, EH

### Alumnae Activities Editor

CiCi Williamson, ΓΨ

### Arts Editor

Chari Beaudry, ΒΠ

### Editorial Assistant

Sydney Finnell Cummings, ΓΠ

### Illustrators

Lucretia Leonard Romey, Δ

Louise Danforth

Muenstermann, ΓI

### Correspondents

Robin Whitfield Brown, ΔΨ

Mary Yeates Meriwether, ΓΠ

Donna Rose Houchen, ΓΞ

### Fraternity Vice President

Jennie Miller Helderman, ΓΠ

### Chairman of Publications

Gay Chuba Barry, ΔA



COLLEGE FRATERNITY EDITORS ASSOCIATION



## Message from the President

### New Directions... Because We Care

As Kappa Kappa Gamma steps into a new decade and celebrates the 119th anniversary of our founding, your Council is excited about new plans and ideas now in the developmental stages — new visions of the future and new directions to be pursued.

We will not forget the purposes for which we were founded, but because of our heritage, because we care, decisions have been made which will provide new services to our members and promote Kappa's relevance and excellence in today's world.

**New . . . the Kappa Kappa Gamma Foundation.** Because we care, after several years of careful consideration, our philanthropic funds have been merged. Members and others may give tax-deductible gifts to this 501(c)(3) charitable Foundation. You may still designate gifts for your favorite fund within the Foundation, i.e., Rose McGill, Students' Aid, Adelphe. Plans will be formulated for grants to support Fraternity educational and charitable activities and selected public



Fraternity President Kay Larson pictured with Cornelia Marschall Smith, EY—Baylor, in the Brown- ing Library at Baylor.

charities. The change creates a wonderful new opportunity for tax deductible gifts to support scholarships and other philanthropies, thus continuing to strengthen Kappa Kappa Gamma while building for the future.

**New . . . KEEP SAFE.** Because we care, the Council is proud to announce a program of personal safety and security for women. We hope that this comprehensive program will teach Kappas and other women how to avoid circumstances which could result in injury, rape, or vio-

lent death. Our members have been touched by tragedy much too often in recent years; we hope through education to develop an awareness which will allow them to be safe wherever they are.

**New . . . merchandising and licensing.** Because we care, we are increasing special services offered by the Fraternity. Members will soon have the opportunity to purchase Kappa merchandise through the Kappa Collection and from approved vendors; additional cruise and tours will be offered to benefit the Foundation; we will continue offering the special insurance program and the Kappa credit card.

Because we care, we are looking forward to seeing you in Dallas in June for the 58th General Convention. You will have a chance to meet Kappas from throughout Canada and the United States, to exchange ideas, and enjoy the fun and inspiration which comes from meeting and being with other Kappas. You will find this a true time of renewal and a time for visualizing Kappa's future.

I thank each of the more than 10,000 members who contributed to the Loyalty Fund last year. These gifts show that you are eager to maintain Kappa's excellence; you want to meet the challenges of today and tomorrow. We can move together in new directions because YOU CARE.

—Kay Smith Larson,  
BII—Washington



Sally Moore Nitschke introducing KEEP SAFE to Province Officers at Associate Council Seminar in Columbus, OH.

### KKΓ Is Licensing

Many products are being sold to Kappas bearing insignia which belongs to the Fraternity.

Plans are underway for the Fraternity to share in the profits being made through a licensing program, which also allows for some control of the quality of the products. This program is the first of a three part merchandising program recommended by a study committee.

More importantly, the licensing effort is necessary for the protection of our registered trademarks.

Our name and symbols are registered for the exclusive use of Kappa Kappa Gamma. The Fraternity must monitor their use and limit it





Chapter flags — a feature of General Convention

authorized vendors, or we risk losing our exclusive rights. Also it is our interest to control who will have use of our name and symbols. We have learned already of offensive products bearing Greek letter names.

We join Alpha Omicron Pi, Alpha Delta, Chi Omega, Delta Delta Delta, Delta Gamma, Kappa Alpha Theta, Phi Mu, and Pi Beta Phi in the licensing and merchandising markets. Other National Panhellenic Conference and Inter Fraternity Conference groups are in varying stages of preparation to enter the markets.

When the Fraternity learns of a vendor using our registered trademarks—our name, the Greek letters  $\mathbf{K}\mathbf{\Gamma}$ , the crest, our badge, and our pledge pin are registered—they will receive a letter informing them of their infringement and asking that they enter into a licensing agreement. They will pay a royalty to the Fraternity for the privilege of using our trademarks.

The Fraternity requests the assistance of all members in reporting the names of vendors using Kappa trademarks so that they can be offered a licensing agreement.

A list of licensed vendors will be available to chapters and alumnae groups and also published in *The Key*. **WE ASK THAT OUR MEMBERS TRADE ONLY WITH LICENSED VENDORS.**

A chapter or alumnae group buy-

ing from a licensed vendor will keep a portion of the royalty due the Fraternity for its own use at the local level.

Members of Kappa who use the registered trademarks for their personal profit will need to be licensed as any other vendor.

Chapters and alumnae groups using the trademarks for their fundraising need not be concerned with licensing.

Anyone interested in becoming a licensed vendor should contact Fraternity Headquarters, Box 2079, Columbus, OH 43216 or (614) 228-6515.

The Merchandising Study Committee which recommended this merchandising program was chaired by Jan Harenberg Stockhoff,  $\mathbf{\Gamma}\mathbf{B}$ —New Mexico. Serving on the committee were Carol Carrano Adams,  $\mathbf{\Delta}\mathbf{M}$ —Connecticut; Phyllis Penrose Bignold,  $\mathbf{\Gamma}\mathbf{\Gamma}$ —Whitman; Debbie Wamser Miller,  $\mathbf{\Gamma}\mathbf{\Xi}$ —UCLA; and Janet Dickerson Sanford,  $\mathbf{\Gamma}\mathbf{K}$ —William and Mary.

—Jennie Miller Helderman,  
 $\mathbf{\Gamma}\mathbf{H}$ —Alabama,  
Fraternity Vice President

## New Appointments

**Barbara J. Sterner**,  $\mathbf{\Theta}$ —Missouri, will assist newly colonized Omicron Deuteron—Simpson College as a Chapter Consultant. Barbara, who served her chapter as PR Chairman and Second Vice Presi-

dent, graduated with a degree in interdisciplinary studies — personnel management and public relations.

**Heather E. Hartmann**,  $\mathbf{\Delta}\mathbf{N}$ —Massachusetts, is also spending the year as a Chapter Consultant for a new colony, Zeta Upsilon—Georgia Southern. Heather graduated with a degree in business administration and was Registrar, Panhellenic Delegate, and President of her chapter.

**Therese L. Guiney**,  $\mathbf{B}\mathbf{Y}$ —West Virginia, has been appointed Chapter Consultant for Delta Nu—Massachusetts. Graduating with a degree in interior design, Therese was active in the American Society of Interior Designers and served her chapter as Social Chairman.

## Best Job in the Fraternity

Province officers have the best job in the Fraternity! This is the consensus of current and former Province Officers. Of the two offices, whether being a Province Director or Alumnae (PDA) or Province Director of Chapters (PDC) is preferable depends upon who is talking.

Province Officers (POs) are the Fraternity representatives who work most closely with the membership. They oversee the operations of chapters and alumnae groups in their assigned geographic regions while serving a two year term. An alumna may serve two terms in a position, and visits each group at least once in a term. It is the duty of Province Officers to explain procedures and policies, advise, give decision-making guidance, assist with programming, operations, and management, and keep in regular contact with their groups through newsletters and correspondence. As the Associate Council they review policies and procedures with the Fraternity Council and make recommendations.

As liaison between the Council and chapters and alumnae groups, they are the officers who listen and pass on information, suggestions, and concerns as well as giving well-deserved applause and encouragement. Province Officers are invaluable and irreplaceable in carrying on





Province Officers relaxing after a day of workshops at Associate Council Seminar.

the work of the Fraternity through their close association with their groups and as a link and conduit between the general membership and Fraternity leaders.

The benefits of serving as a Province Officer are really multifaceted, according to **Betsy Stillwell Strain**, Σ-Nebraska, former Zeta PDC and now a Regional Director of Chapters. "The most obvious benefit is the association with terrific people—working with some of the most outstanding women in North America."

Through visits to alumnae groups a PDA numbers among her friends interesting women of a wide range of ages and Kappa backgrounds. She laughs with them as they share chapter experiences, rekindle old friendships and enjoy the lifetime bonds of sisterhood. She glows with pride as their organizations grow and benefit their community and the Fraternity.

**Karen Stevens Pickney**, ΔY-Georgia, says that serving as Mu PDA "has been a catalyst for stepping beyond the bounds of my own self-limitations. I have conquered a Personal Computer and software program while filling my empty nest with Mu Province owls. My biggest pay-off has been my interaction with women who are consistently of the highest calibre."

**Betty Hines Bloore**, ΔP-Mississippi, views her association with alumnae in Lambda Province as

PDA "As a tapestry—woven with Kappa threads of friendship with recent graduates, career women, The Long-time Faithfuls, Kappas on the mommy track, 50/60/75 year alumnae. All contribute in their special ways to our Fraternity. Each alumna is a volunteer who has chosen to continue weaving Kappa into her life. It is these special friendships, made as Lambda Province Director of Alumnae, that have been extremely enriching and beneficial to me. We have grown together and have strengthened the blue and blue threads that weave us together."

**Joan Cook Cohen**, BM-Colorado, former Eta PDC, currently Assistant to the Director of Membership, cherishes the advantages to her family in having issues facing college students brought to the dinner table. "It was a joy sharing our home with Kappa Traveling Consultants who brought their youth, enthusiasm, laughter, travel stories, and questions to all members of our family. It was a thrill seeing one tiny, seemingly insignificant suggestion take root in a chapter and grow," Joanie reminisces, "just as it was a challenge to hear undergraduate concerns without judging."

Former Gamma PDC **Ann Stafford Truesdell**, P<sup>a</sup>-Ohio Wesleyan, Chairman of Chapter Programs, says "The BEST job in the Fraternity—this definitely defines the position of Province Officer. The possibilities of developing new friend-

ships with undergraduate Kappa and our supportive alumnae abound. In addition, these positions allow one the opportunity for self-growth. Fine-tuning lifeskills (management and leadership, communications and interpersonal effectiveness, organization and implementation results in self-confidence and satisfaction. The Province Officer position is a skill-building, people job and the rewards far outdistance the time and energy spent."

These are marketable skills that can appropriately be included on résumés. Often Kappa volunteer experiences lead to employment or new careers.

"People may think they must excel in these areas in order to tackle the PDA or PDC jobs," muses Betsy Strain. "I think they just need to have a desire to learn and develop these skills. All a person has to do is believe in the purposes of the Fraternity and enjoy Kappas young and old. The rest can easily be acquired."

"I also think people tend to volunteer their time to something from which they feel they will benefit or gain. If everyone thought about the rewards, many more would give their time to Kappa!"

## Key Information

Kappas, please contribute materials for *The Key*. We especially desire photos of the works of Kappa artists and artists at work, in all fields. For Arts: Chari Beaudry, 5102 241 St. SW, Mountlake Terrace, WA 98043, (206) 771-4017; Alumnae Activities and "Hoot Line," CiCi Williamson, Box 188, Alexandria, VA 22313, (703) 836-1428; all other, Cynthia Lanford, 3403 Firethorn Dr., Tuscaloosa, AL 35405, (205) 553-7021.

WELCOME!!!  
to our record 112 pledges  
of  
Zeta Upsilon Colony  
Sept. 29, 1989

Georgia Southern College  
Stateboro, GA





# "In the Honors of One..."

Congratulations to all our undergraduate members who excel in academics and leadership on their campuses. During 1988-89, Kappas were named to honoraries for practically every academic major, held office and were contributing members in hundreds of campus organizations, and received countless individual honors and scholarships. We salute our Panhellenic presidents, Student Government officers, and members of class honoraries. Information was provided by 78 of 119 chapter Public Relations Chairmen on the Annual Honors Report received before July 1, and the national headquarters of Omicron Delta Kappa.

## PANHellenic PRESIDENTS

**Arizona State**—EΔ  
Gail Gagliardi  
**Bowling Green**—ZK  
Melissa Pucket  
**Calif. State, Fresno**—ΔΩ  
Jennifer Mullen  
**Cornell**—Ψ<sup>Δ</sup>  
Stephanie Ralston  
**Idaho**—BK  
Kelly Keogh  
**Indiana**—Δ  
Sandy Lee, Pledge PH  
**Monmouth**—A<sup>Δ</sup>  
Kelly Patch  
**Richmond**—ZO  
Kristine Koch  
**Wash. & Jefferson**—ZA  
Stephanie Myers

## STUDENT GOVERNMENT OFFICERS

**Bowling Green**—ZK  
Colleen McGinty, SGA VP  
**Florida**—EΦ  
Ariel Steele, Senate pres.  
**Illinois Wesleyan**—E  
Amy Peterson, Senate pres.  
**Monmouth**—A<sup>Δ</sup>  
Cheryl Conaway, SGA pres.  
**Oklahoma State**—ΔΣ  
Lara Newell, SGA VP  
**Richmond**—ZO  
Jennifer Casey, WCGA pres.  
Michele Lavin, Senate VP

## HONOR SOCIETY PRESIDENTS

**Alabama**—ΓΠ  
Lorri Favret, Blue Key  
**Akron**—A  
Lisa Peltz, Kappa Omicron  
Phi  
**Babson**—ZA  
Linda Wittlinger, Blue Key  
**Bucknell**—ΔΦ  
Kelly Marsh, Phi Eta Sigma  
**Butler**—M  
Susie Selby, Mortar Board  
**Centre**—ZI  
Sarah Upshaw, Phi Eta  
Sigma

**Florida**—EΦ  
Rika Canin, Savant  
**Oklahoma State**—ΔΣ  
Beth Boring, Golden Key  
Lara Newell, Phi Eta Sigma  
**Southern Methodist**—ΓΦ  
Julie Carter, Law Society  
**Tennessee**—EA  
Jennifer Chambers, Mortar  
Board  
**Washington State**—ΓH  
Debra Yandt, Phi Kappa Phi

## ALPHA LAMBDA DELTA (Freshman Scholarship)

**Akron**—A  
Laura Aukerman  
Robin Miller  
Jennifer O'Donnell  
**Alabama**—ΓΠ  
Susan Gray  
**Auburn**—EH  
Robbie Alexander  
Eliza Jones  
Shannon Marks  
Laura McSwain  
Yvonne Thornhill  
Laura Vanderberg  
**Bowling Green**—ZK  
Sherry Bayliff  
Judith Bell  
Jennifer Boutelle  
Stacia Geiger  
Cheryl Hassay  
Melinda Messbarger  
Laura Praeger  
Michele Schmidt  
Tracy Thomas

Lisa Tootle  
**Butler**—M  
Meg Dietz  
Brenda Longstreth  
Monica Method  
**Clemson**—EM  
Julie Frederick  
Elizabeth Holley  
Julie Kinloch  
**Colorado C.**—ΔZ  
Jennifer Rankin  
Lara Talbot  
Allison Wolfinger  
**Florida**—EΦ  
Kim Cook  
Jill DeBerry  
Jennifer Herndon  
Donna Hoge  
Kathy Jacobus

Kim Klaus  
Kim Kukulka  
Margaret Millender  
Tracie McKibben  
Nancy Nelis  
Lee-Anne Oros  
Jennifer Slone  
Rachel Sprung  
Sara Stack  
Jackie Weaver  
**Georgia**—ΔY  
Heather Glover  
Leigh Heidt  
Janie Hester  
Becky Towe

**Illinois**—BA  
Debra Andrews  
Alissa Camp  
Julie Diamond  
Pam Flewelling  
Mila Gomez  
Elizabeth Hausler  
Jennifer James  
Nicole Kilbane

**Maryland**—ΓΨ  
Kristi Gwyn  
Amy Montgomery  
**Nebraska**—Σ  
Tiffinay Erisman  
Patty Heng

**Oklahoma**—BΘ  
Wendi DeVaughn  
Angie Sullivan  
Margaret VanWambeck

**Southern Calif.**—ΔT  
Jane Burns  
Susan Kahn  
Kim Poth  
Jill Ruben

**Southern Methodist**—ΓΦ  
Whitney Busse  
Shannon Caldwell  
Juli Carter  
Susan Chase  
MaryAllison Crain  
Laura Galt  
Cindy Hardcastle  
Julia Hicks  
Marjorie Huckabee  
Jennifer Leslie  
Francie Moody  
Laura Newman  
**Tennessee**—EA  
Ami Irish  
Patricia Miranda  
Abby Turner

**Texas**—BΞ  
Elizabeth Burgher  
Suzanne Pratt  
**Tulane**—BO  
Sally Dories  
Monique Meche  
**William and Mary**—ΓK  
Julie Douglas  
Sue Gordon  
Becky Lampert  
Mary Lloyd  
Kathy Norton  
Julie Richardson  
Pam Sanderson

## PHI ETA SIGMA (Freshman Scholarship)

**Akron**—A  
Laura Aukerman  
Robin Miller  
Jennifer O'Donnell  
**Alabama**—ΓΠ  
Susan Gray  
Stacy Gray  
Harriet Kennedy  
Shannon Sylvis  
**Arkansas**—ΓN  
Leigh Anne Elloit  
Julie Hines  
Keli Langford  
Jill Matthews  
Deb Miller  
Cara Rose

**Auburn**—EH  
Robbie Alexander  
Cobette Lewis  
Shannon Marks  
Laura McSwain  
Suzanne Rice  
Joan Witherspoon  
Leslie Young

**Bowling Green**—ZK  
Judith Bell  
Michele Schmidt  
Jamie Smallets  
Tracy Thomas

**Bucknell**—ΔΦ  
Allison Alcasabas  
Theresa Cimino  
Lisa Hauff  
Holly Hollister  
Kelly Marsh  
Rebecca Surridge  
Ann Weiskeircher

**Florida**—EΦ  
Kelli Andrews  
Kim Cook



Jennifer Herndon  
 Donna Hoge  
 Kim Kukulka  
 Margaret Millender  
 Caroline Montanus  
 Tracie McKibben  
 Nancy Nelis  
 Lee-Anne Oros  
 Sara Stack  
 Jackie Weaver  
**Idaho, C. of—ZII**  
 Denise Inda  
 Christy Jarski  
 Laurie Newcomb  
 Shawna Swanson  
**Idaho—BK**  
 Angela Davis  
 Kathy Edwards  
 Bridie Monhan  
 Lori Orndorff  
 Jill Wood  
**Illinois—BA**  
 Alissa Camp  
 Julie Diamond  
 Elizabeth Hausler  
 Nicole Kilbane  
 Barbara Lightstone  
 Kathy Linneman  
 Jennifer McGuffin  
 Suzy Nagle  
 Amy Nerad  
 Annie Ni  
 Lynne Powell  
 Laura Randolph  
 Kari Smith  
 Kris Trayser  
 Nina Villegas  
**Kansas State—ΓA**  
 Missy Andeel  
 Kate Perkins  
**Maryland—ΓΨ**  
 Kim Clark  
 Michelle Cimino  
 Ann Marie Cullen  
 Nicole Leiker  
 Amy Montgomery  
**North Carolina—EF**  
 Kelly Bruce  
 Cynthia Stewart  
 Shannon Stroup  
**Richmond—ZO**  
 Erika Floyd  
 Sarah Hardison  
 Michele Lavin  
 Susan Mesich  
**Southern Methodist—ΓΦ**  
 Whitney Busse  
 Shannon Caldwell  
 Susan Chase  
 Mary Allison Crain  
 Cindy Hardcastle  
 Julia Hicks  
 Marjorie Huckabee  
 Jennifer Leslie  
 Francie Moody  
 Laura Newman  
**Syracuse—BT**  
 Tina Allan  
 Michelle Burman  
 Catherine Crossland  
 Leah Shapiro  
 Susan Vinella

**Tennessee—EA**  
 Abby Turner  
**Texas—BE**  
 Laura Leman  
 Suzanne Pratt  
**Texas A&M—EP**  
 Courtney Allen  
**Utah—ΔH**  
 Sally Swinyard  
 Janice Ugaki  
**Washington & Lee—ZT**  
 Catherine Caldwell  
 Erin Cosby  
 Christine Davis  
 Lauris Lyman  
 Amy Miles  
 Valerie Pierson  
 Elise Whitaker  
**William & Mary—ΓK**  
 Julie Douglas  
 Sue Gordon  
 Becky Lampert  
 Mary Lloyd  
 Kathy Norton  
 Julie Richardson  
 Pam Sanderson

# **GAMMA BETA PHI** (Sophomore Scholarship)

**Alabama—ΓΠ**  
 Jane Brown  
 Shelton Murray  
**Arkansas—ΓN**  
 Leigh Anne Elliot  
 Robin Ezell  
 Heather Ligon  
 Jill Matthews  
 Renee McKelvy  
 Miki McKenzie  
 Carolyn Ridenour  
 Romney Roussear  
 Alicia Shirakbari  
**North Texas—ZΣ**  
 Amy Green  
 Stephanie Mikeska  
**Tennessee—EA**  
 Jennifer Chambers  
 Leslie Simpson  
 Kathryn Taylor  
 Kim Ujcich

# **GOLDEN KEY** (Junior Scholarship)

**Akron—A**  
 Jennifer Bolanz  
 Michelle Puskar  
**Arizona State—EA**  
 Wendy Miller  
 Kathi Nicoud  
 Melissa Soza  
 Lori Stuart  
**Bowling Green—ZK**  
 Jennifer Boutelle  
 Gwendoly Musser  
**Calif., Davis—EO**  
 Elizabeth Billitti  
**Calif., Irvine—ZH**  
 Joy Rosenzweig  
**Calif., San Diego—ZN**  
 Marlene Standel

**Clemson—EM**  
 Kristin Ruais  
 Missy Schwartz  
**Colorado—BM**  
 Michelle Barnes  
 Stephanie Dunn  
 April Jurick  
**Cornell—Ψ<sup>Δ</sup>**  
 Michelle Akina  
 Jennifer Dempsey  
 Kimberly Wehle  
**Florida—EΦ**  
 Gina Bonanno  
 Gina Caputo  
 Angie Effinger  
 Jennifer Herndon  
 Kathy Jacobus  
 Lisa Matthias  
 Namcy Nelis  
 Stephanie Nelson  
 Barbie Pierce  
 Rachel Sprung  
**Georgia—ΔY**  
 Julia Parker  
**Illinois—BA**  
 Colleen Conniff  
 Christine Fordham  
 Gina Maggio  
 Lara Meinheit  
 Jennifer McGuffin  
 Suzy Nagle  
 Amy Nerad  
 Annie Ni  
 Veronica Puc  
 Kari Smith  
 Kris Trayser  
 Terri Wasserman  
 Dina Zissimopoulos  
**Indiana—Δ**  
 Amy Godby  
 Jennifer Wright  
**Kansas State—ΓA**  
 Nancy Hill  
**Maryland—ΓΨ**  
 Ann Marie Cullen  
 Amy Montgomery  
**Miami, U. of—ΔK**  
 Sallie Scudder  
**Nebraska—Σ**  
 Courtney Butherus  
 Vicki Domina  
 Kim McAuliff  
 Kristi Nedrow  
**Oklahoma—BΘ**  
 Karri Bradley  
 Joanie Pansza  
**Oklahoma State—ΔΣ**  
 Beth Boring  
 Susan Walker  
**Southern California—ΔT**  
 Susan Kahn  
 Jill Ruben  
 Stacey Stringer  
 Ria Zander  
**Syracuse—BT**  
 Tina Allan  
 Genevieve Katz  
**Tennessee—EA**  
 Clare Carpenter  
 Susan Kramer  
 Kathy Scott

**Utah—ΔH**  
 Sydney Johnson

# **OMICRON DELTA KAPP<sup>Δ</sup>** (Leadership Honor Society)

**Akron—A**  
 Robin Miller  
**Auburn—EH**  
 Elizo Jones  
**Baylor—EY**  
 Ilsa Van Hahn  
**Bowling Green—ZK**  
 Melinda Messbarger  
**Centre—ZΓ**  
 Elizabeth Hawes  
 Sarah Upshaw  
 Shannon Whitaker  
**Clemson—EM**  
 Cheryl Carson  
 Anna Catherine Whitesides  
 Melissa Schwartz  
**Dickinson—EΩ**  
 Caryn Caputo  
 Stephanie Ginouves  
 Michelle Wiragh  
**Drake—ΓΘ**  
 Kristi Weflen  
**Emory—EE**  
 Rachel Brown  
 Lara Kriegel  
 Nina Mehrotra  
**Florida—EΦ**  
 Tara Wilfong  
**Kentucky—BX**  
 Amy Butz  
 Stephanie Sims  
**Miami U—ΔA**  
 Victoria Deets  
 Kerrie Kelley  
**Ohio Wesleyan—P<sup>Δ</sup>**  
 Nina DeSimone  
**Purdue—ΓΔ**  
 Judith Boyle  
**Richmond—ZO**  
 Janine Cauvin  
 Ellen Widenbauer  
 Michele Lavin  
 Jessica Rucker  
**South Carolina—EK**  
 Alison Gauch  
 Rolfe Godshalk  
 Maria Schultz  
**Tennessee—EA**  
 Kristen Shoemith  
 Kimberly Ujcich  
**Texas—BE**  
 Holly Blewer  
 Susan Kramer  
**Texas Tech—ΔΨ**  
 Melissa Blythe  
 Stephanie Carter  
 Diana Deadwyler  
 Taryn Thompson  
**Tulane—BO**  
 Arisa Kelley  
**Tulsa—ΔΠ**  
 Karen Barlow  
 Catherine Campbell  
 Kristine Cutler  
 Julie Nilsson  
 Elaine Sanders  
 Wendy Whiles



Suzanne Younger  
**Villanova**—ZI  
 Heather Dallas  
 Lisa Kennedy  
**Vestminster**—ZZ  
 Katharine Kim  
**William & Mary**—FK  
 Michelle Boeker  
 Aleda Borders  
 Julie Farmer  
 Elizabeth Sinclair

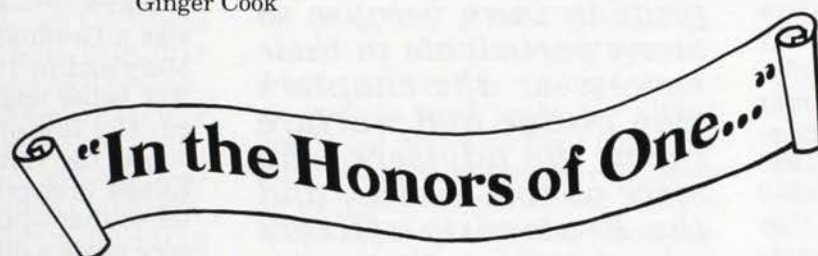
**MORTAR BOARD**  
 (Senior Scholarship &  
 Leadership)

**Auburn**—EH  
 Joan Witherspoon  
**Arizona State**—EA  
 Kristen Brown  
 Lori Stuart  
**Bowling Green**—ZK  
 Colleen McGinty  
 Elizabeth Rice  
 Rebecca Stevens  
**Bucknell**—ΔΦ  
 Theresa Cimino  
 Rika Schmitt  
**Butler**—M  
 Susie Jacko  
 Susie Selby  
 Jennifer Waugh  
**Clemson**—EM  
 Missy Schwartz  
**Colorado**—BM  
 Missy Shinn  
**Colorado State**—EB  
 Kristin Nicholas  
**Cornell**—Ψ<sup>3</sup>  
 Heather Borden  
**Emory**—EE  
 Ellen Frank  
 Erin Holifield  
 Lara Kriegel  
 Laura Schilling  
**Florida**—EΦ  
 Angie Effinger  
 Sarah Foot  
 Jennifer Herndon  
 Sara Stack  
**Idaho**—BK  
 Angela Edwards  
 Kelley Keogh  
 Jennifer Smith  
**Illinois**—BA  
 Ashley Hyland  
**Indiana**—Δ  
 Julie Lingle  
**Kansas**—Ω  
 Jodi Breckenridge  
**Lawrence**—ZE  
 Margie Bernsten  
 Lael Keiser  
**Monmouth**—A<sup>3</sup>  
 Amy Manning  
 Devon Monroe  
 Lynne Moormann  
 Robyn Ottenad  
 Kelly Patch  
 Gina Winnett  
**Montana**—BΦ  
 Julie Meslow  
 Jody Wilson

**Puget Sound**—EI  
 Renee Ackermann  
 Darcie Julum  
 Maire Sullivan  
**Richmond**—ZO  
 Jennifer Casey  
 LeeAnn Courie  
 Michele Lavin  
 Ellen Wiedenbauer  
 Laura Candler  
**Southern Methodist**—ΓΦ  
 Juli Carter  
**Tennessee**—EA  
 Krista Black  
 Jennifer Chambers  
 Amanda Gerhardt  
**Tulsa**—ΔΠ  
 Paige Allison  
 Allison Cox  
 Julie Nilsson  
 Suzanne Younger  
**Washington State**—ΓH  
 Kristy Gustafson  
 Allison Market  
 Erin Marshall  
 Keidi Massey  
 Jodie Russ  
**William & Mary**—FK  
 Cindy Corlett  
 Sarah Kelley  
**Wyoming**—ΓO  
 Ginger Cook

**Connecticut**—ΔM  
 Daina Larson  
 Lori Quinn  
 Vonda Reimers  
 Lisa Ruggerio  
 Jennifer Ryley  
**Cornell**—Ψ<sup>3</sup>  
 Lisa Berg  
**Emory**—EE  
 Christine Nelson  
**Illinois**—BA  
 Ashley Hyland  
 Sarah Jorgensen  
 Lara Meinheit  
**Iowa**—BZ  
 Sheri Paleka  
**Kansas State**—ΓA  
 Julie Woods  
**Michigan**—BA  
 Kathy Bernreuter  
 Michelle Gryzenia  
 Mazy Hommel  
 Kim Wahl  
**Puget Sound**—EI  
 Cindy Haggart  
 Darcie Julum  
 Lisa Nicolai  
**Southern Methodist**—ΓΦ  
 Caroly Crain  
 Laura Galt  
 Amy Greer

**Iowa**—BZ  
 Noelle Sinclair  
**Lawrence**—ZE  
 Kellie Brown  
**Michigan**—BA  
 Kathy Bernreuter  
**North Carolina**—EF  
 Anne Harvey  
 Julie Kraft  
**Puget Sound**—EI  
 Linda Misser  
**Richmond**—ZO  
 Pamela Wilks  
**Southern Methodist**—ΓΦ  
 Erin McHam  
**Tulane**—BO  
 Suzanne Hurley  
**Washington U**—ΓI  
 Jen Kaitschuk  
**Wash. & Jefferson**—ZA  
 Lisa Hildenbrand  
 Cynthia Rothblum  
**Washington & Lee**—ZT  
 Erin Cosby  
 Christine Davis  
 Dallas Hagedwood  
 Danatha Hoffman  
**Whitman**—ΓT  
 Kim Ronai  
 Susan Wickwire  
**William and Mary**—FK  
 Michelle Boeker  
 Kim DiDomenico



Lisa Cook  
 Dana Smith  
 Lily Toy  
**ORDER OF OMEGA**  
 (Greek Scholarship  
 & Leadership)  
**Arkansas**—ΓN  
 Lauren Malpica  
 Leslie Vaught  
**Arizona State**—EA  
 Kristen Brown  
 Heather Hall  
 Andrea Head  
 Suzanne Roski  
 Jolyn Warford  
**Bowling Green**—ZK  
 Elizabeth Rice  
**Calif., Irvine**—ZH  
 Christy Blue  
 Emily Eggleston  
 Lisa Wallace  
**Calif., San Diego**—ZN  
 Courtney Barnes  
 Nancy Frey  
 Michele Lindley  
 Michele Silva  
**Colorado State**—EB  
 Kristin Nicholas

**Southern Calif.**—ΔT  
 Susan Kahn  
 Stacey Stringer  
 Ria Zander  
**Syracuse**—BT  
 Amie Freling  
 Leah Shapiro  
**Tennessee**—EA  
 Amanda Gerhardt  
**Texas**—BE  
 Holly Blewer  
 Caryn Forest  
 Kathy Scott  
 Shannon Summers  
**Vermont**—ZΔ  
 Jane Caron  
**Villanova**—ZI  
 Beth Dreiling  
**PHI BETA KAPPA**  
 (Senior Scholarship)  
**Colgate**—ZP  
 Heather Jones  
**Colorado State**—EB  
 Kristin Nicholas  
**Emory**—EE  
 Dawn Comfort  
 Magdalena Florez  
 Erin Holifield  
 Lara Kriegel

**BLUE KEY**  
 (Senior Scholarship)  
**Babson**—ZA  
 Alyssa Kelesian  
 Allison O'Dell  
 Joanne Shea  
 Linda Wittlinger  
**Idaho**—BK  
 Angela Edwards  
 Kelley Keogh  
 Janet Kelly  
 Stacy McMurray  
**Indiana**—Δ  
 Amy Godby  
**PHI KAPPA PHI**  
 (Senior Scholarship)  
**Clemson**—EM  
 Donna Cole  
**Colorado State**—EB  
 Kristin Nicholas  
**Cornell**—Ψ<sup>3</sup>  
 Kimberly Wehle  
**Illinois**—BA  
 Ashley Hyland  
**Kansas State**—ΓA  
 Nancy Hill  
**Oklahoma State**—ΔΣ  
 Tuyet Nguyen  
**Pudget Sound**—EI  
 Jill Rutledge  
**Tennessee**—EA  
 Patricia Miranda  
**Villanova**—ZI  
 Lisa Kennedy  
 Kerrin McCormick  
**Washington State**—ΓH  
 Debra Yandt



# Candles on the Water

by Gay Chuba Barry, ΔA-Penn State, Chairman of Fraternity Publications

There is a certain radiance about a candle, something that illuminates a little corner of our world...much like our Field Representatives who may be thought of as Kappa's "Candles on the Water." They are reflections of Kappa ideals and standards with unwavering dedication and high ethics. They are glowing flames to light our way.

Serving as Director of Field Representatives for four years was an experience and an opportunity that will be treasured for all time. To be in the company of these fine young Kappas was a time for continued self-growth and a time to be challenged. Their light warms others for all seasons to come.

Since I feel so strongly about the value and the opportunities available in the Field Representative Program, it seemed apropos to me to learn how this experience influenced and benefited our former Field Representatives. A questionnaire was sent in the spring of 1988 to all who had served since 1950 and to some who served before that time. The response was heartwarming. It was proof positive of the gains realized from the investment in training and nurturing by the Fraternity, and from the time, dedication and effort by the Field Representatives themselves. (Note that in 1984 the specific titles changed from Field Secretary to Traveling Consultant and from Graduate Counselor to Chapter Consultant which more accurately reflect the job descriptions.)

## SPECIAL MEMORIES

The memories **Martha Galleher Cox**, P<sup>a</sup>—Ohio Wesleyan, 1943-45 Field Secretary, most vividly recalls are "Traveling during the war by train...always crowded...sometimes having to sit on my bags because there were no available seats, but most important are memories of the girls I met—many are my good friends today."

**Judith Lennon Cashman**, BB<sup>a</sup>—St. Lawrence, 1958 Graduate Counselor for BA—Pennsylvania, remembers her experiences as

happy, exhilarating, "heady" — in being perceived by the chapter as "older, wiser, and confident"; she felt the alumnae were more cosmopolitan and sophisticated than she, but still sought her help.

**Mary Agnes "Gray" Roberts**, Y—Northwestern, Field Secretary and Graduate Counselor 1944-1947, counts among her most special memories "The magnificent people that I met, the Council for whom I worked and represented, the many wonderful friends I made, many of whom have been everlasting...are all coupled with the thrill in traveling hither and yon."

---

*All Kappas may take pride in them because so many participate in their successes: the chapters who pledge and nurture them, the advisers who serve as role models, and the Fraternity officers who encourage them.*

---

In responding to the major benefits of the program, many expressed that they were very well trained as volunteers compared to others, and how grateful they have been for it.

**Susan Brown Hardesty**, BY—West Virginia, 1967 Field Secretary, shares those sentiments. "I think I have been a better volunteer in the community because of the many opportunities I had in addressing large groups and in assisting in the organization of chapters."

**Marsha Love**, EZ—Florida State, remembers driving halfway across Columbia, South Carolina, to the USC campus one night with the Epsilon Kappa Christmas tree in her car trunk and no headlights. She also remembers triggering the burglar alarm at Headquarters and "dropping a piping hot pizza all over the front steps just as Clara O. Pierce, BN—Ohio State, Executive

Secretary opened the door." (One we "older" Kappas realize the significance of that moment.)

Field Secretary in 1962, **Marly Nelson Barrett**, BΦ—Montana, especially remembers "coming to the heartwarming realization that we Kappas do indeed have a special bond regardless of (our differences). I have felt this bond every time I've discovered another Kappa sister through the years."

**Frances Davis Roberts**, ΔY—Georgia, Graduate Counselor at Arkansas in 1978 relates the feeling of gratitude from the chapter and also of being "scared to death of investigating a major change, and the feeling like a million dollars when it made a positive difference."

A similar point of view was expressed by **Janet de Michaeli Wickre**, P<sup>a</sup>—Ohio Wesleyan, who was a Graduate Counselor at ΓΨ—Maryland in 1974. She remembers "the honor and thrill of being selected; the fun of being in a chapter house; the rare opportunity to view Kappa in-depth; and the incredible sense that—just maybe—your presence made a difference."

For a number the special memories included meeting their husbands as a result of assignments, but the most consistent replies were the very special friendships made, the interesting people met, and the broadening of perspectives: a "growing year" in every sense.

## BENEFITS GLEANED

**Dorothea Lowendick Bitler**, EF—North Carolina, Graduate Counselor for EΣ—Virginia, feels the experience taught her flexibility, poise and "grace under pressure," giving her confidence to try things she otherwise might not have attempted.

**Corinne Mani Yancy**, ΔB—Duke, relates that her Graduate Counselor days at ZA-Babson in 1979 helped her to be more open-minded about people and attitudes. The experience also helped in the development of organizational skills.

"One learns that respect is gained slowly through action, not words, [and] that trust develops unknow-



ngly and displaces fear or resentment. Specifically, Psi Deuteron—Cornell taught me much about excellence — of pursuing one's capabilities and striving for goals." **Elizabeth Meyer Berger**, EΣ—Virginia, 1978-1980 Graduate Counselor, also says, "Those women gave me more than I could possibly have given [them]." Beth currently is a landscape architect. One of her recent projects, The University of Virginia Historic Central Grounds Master Plan, won an honor award from the American Society of Landscape Architects.

Several shared the fact that they changed their career directions as a result of this enriching experience either to counseling or a more "people oriented" field.

According to **Kimberly Rountree Lien**, ΓΕ—UCLA, 1979-1980 Field Secretary, she "learned by maintaining high standards I could accomplish more." Kim also feels one develops "very good people skills" in these positions.

**Kay Scholberg Weeks**, ΔΦ—Bucknell, both Graduate Counselor and Field Secretary from 1976-1978 echoes Kim. She developed "people, presentation, and administrative skills; problem solving abilities; flexibility in thinking; and solutions to a myriad of situations; and self-motivation and team-building skills. It was a real foundation for what I have done thus far and may do in the future."

**Sarah Avril Sutfin**, BX—Kentucky, 1984-1985 Traveling Consultant comments, "It prepared me to feel comfortable about being alone, to think things through more thoroughly." She also feels it improved her speaking ability and motivational techniques.

"As a second year MBA student,

my experience as a Chapter Consultant was a popular topic during interviews. Most interviewers were surprised to learn about the level of responsibility I had," said **Carol Bender**, ΔA—Penn State/TP—Allegheny, 1986-1987 Chapter Consultant at Ψ<sup>1</sup>—Cornell. She is now a human resource associate with Bristol-Myers, the first to hold this new position.

**Karen Bosch**, X—Minnesota, 1980-1981 Field Secretary, says "social graciousness in my job I attribute to my Field Rep experience, and it has often been commented upon by my employers." She adds, "It is a character building, confidence building experience. One's creativity, flexibility, and education are constantly challenged, forcing personal growth. It is fulfilling to watch one's suggestions and support help others to achieve their goals."

**Barbara Cole Thornhill**, ΓK—William and Mary, 1982-1983 Field Secretary, presently serves as the director of a marketing agency. She comments, "One of the best reasons for doing 'this' is [that] it helps you objectively view the rest of your life. I had a perspective of what I wanted to pursue professionally that I would not have had right out of college. Plus I then had the confidence to aggressively pursue it. Also, it helps establish self-reliance and discipline that serves through any career."

The greatest benefits are "Skills taught in a loving, nurturing environment; tests of the purest kind with complete support. All the skills learned have assisted me with both personal and professional growth. There can be no greater job satisfaction than with this position," says **Mary Clarke**, ΔZ—Colorado College, 1986-1987 Traveling Con-

sultant, and a regional manager of an educational foundation for foreign study.

"I wouldn't have traded this experience for anything in the world, especially now that I have seen how it has impacted my life. Independence and assertiveness are important traits for women to possess these days, and my time as a Traveling Consultant in 1985-1986 helped to develop these areas." **Jaime Ogden**, ZZ—Westminster, worked as a field representative for the American Cancer Society and is presently earning an additional degree in nursing.

These capsule comments are but a few received which give testimony to a program and opportunity of significance provided by the Fraternity. Self-growth, development of career and volunteer skills, as well as personal insight, are some of the tangible benefits derived from this exceptional program. The dividends from this investment are apparent not only to the Fraternity but to those women who attribute much of life's successes to this experience.

The University of Washington Panhellenic was the most recent to hire a former Kappa Field Rep as Greek or Panhellenic Adviser. **Colleen Blough**, ΔO—Iowa State, 1986-1988 Traveling Consultant, is serving her second year as Panhellenic Adviser. Colleen replies, "I'm thankful the first two years of my post-college experience were so rewarding. I looked forward to each day of work because I believed in what I was promoting."

This depth of feeling for the position, this radiance, these Kappas are still illuminating little corners of the world. They will be forever Kappa's "Candles on the Water." All Kappas may take pride in them because so many participate in their successes: the chapters who pledge and nurture them, the advisers who serve as role models, and the Fraternity officers and chairmen who encourage them.

**Kelly Riggs**, Σ—Nebraska, Field Representative 1978-1980, perhaps sums it up in this quote: "Give to the world the best you have and the best will come back to you."

Addresses of your Field Representative friends may be acquired from Headquarters. Please enclose a self-addressed stamped envelope.

Illustration by Louise Danforth Muenstermann, ΓI







## KEEP SAFE

*by Sally Moore Nitschke, BN—Ohio State, Chairman of Educational Programming and Leadership Development*

*The logo of KEEP SAFE is a computer graphic design developed by Linda Lange, BP<sup>1</sup>—Cincinnati, of the Fraternity Headquarter's Communications Department.*

*Symbolizing a spotlight bringing into sharp focus the issue of personal safety, the KEEP SAFE logo illustrates the bright light of increased awareness which can make the difference between personal safety and crime. By shining this spotlight on an issue so vital to all women today, Kappa Kappa Gamma seeks to bring to the attention of every member information necessary for taking steps to insure her own personal safety.*

"Believing that personal safety is a vital issue, and in an effort to help women make educated decisions, the Council of Kappa Kappa Gamma Fraternity has adopted KEEP SAFE as a program of personal safety and security for women."

— January 1989

### KEEP SAFE

To increase awareness of the need for and the means by which every member can take steps to insure her own personal safety, Kappa Kappa Gamma establishes KEEP SAFE. This program is

designed to fully inform every woman, undergraduate and alumna alike, about the issues involved in personal safety. A special emphasis is placed on Date/Acquaintance Rape...what it is, how it happens, and what prevention and avoidance strategies are possible.

## It Could Never Happen to Me

**"JOGGER RAPED AND BEATEN IN CENTRAL PARK"** — headline

**"CRIME ON CAMPUS . . . SCHOOLS FAIL SAFETY TEST"** — The October 1988 *USA Today* series outlined the lax security, increased crime rates, and student indifference on 968 campuses.

**THE ACCUSED** — A graphic, horrifying movie portraying gang rape. Jodie Foster won an Academy Award in 1989 for her role as the victim.

**AGAINST HER WILL . . . RAPE ON CAMPUS** — a television production narrated by Kelly McGillis depicted the dramatic increase of date rape on our college campuses.

Talk Shows — Phil Donahue, Oprah Winfrey, Larry King, and others continue to capitalize on the sensational with programs which spotlight campus violence.

You and I read these headlines; we watch media productions. If you react like I do, these topics invite concern, but do not threaten because we have not been personally affected.

However, consider these facts.

**FACT:** The next jogger attacked might be you or a member of your family.

**FACT:** Today a Kappa and her husband devote their lives to legislative change requiring every college and university to make public campus crime statistics and security procedures...because of the brutal rape and murder of their freshman daughter at a small private university.

**FACT:** From a group of eleven of the best and brightest of our young Kappa graduates interviewed last year, two had been date raped as freshmen in college.

**FACT:** A Fraternity officer was assaulted in the guest room of a

Kappa house while on a campus visit.

**FACT:** An active member suffered a broken nose when punched in the face by her date at a formal last spring.

What is going on, in our communities and on our campuses?

Kappas are not insulated from campus violence or from any of the violence which dominates the media. Today personal safety is everyone's business. It CAN happen to us and to those we love.

IT COULD HAPPEN TO ME!

### KEEP SAFE... Wherever You Are

Simple preventive measures often can make the difference between safety and crime. Published this fall, a brochure, "KEEP SAFE... Wherever You Are," outlines common sense tips to insure personal



safety on campus, in the office, in public places, at home, driving a car, and while cycling and running.

Have you thought about your own safety? ...

#### ON CAMPUS...

Do you prop doors open, especially fire doors, in your dorm or chapter house for even a short period of time? If you do, you risk not only your own safety but also that of others.

Do you confront or ignore a stranger? Don't! If you see a suspicious person in the corridor or

lounge of your dorm or chapter house, call campus security or the local police immediately.

#### IN THE OFFICE...

If you must work hours when you may be isolated, do you arrange to work with another person in the same vicinity?

In your office do you arrange furniture so that you can easily see the door and anyone who enters?

#### AT HOME...

Have you established a buddy system with a neighbor? Do you let

your neighbor know when you will be arriving late?

If you return to your residence and suspect that it has been illegally entered, do you enter? Don't. Call the police immediately.

Do you replace locks when you move into a new house or apartment? You don't know who has been given keys by a previous resident.

These are just a few of the useful ideas from "KEEP SAFE...Wherever You Are" which can help you be more aware and better prepared to insure your own safety. Awareness is an alternative to fear.

## KEEP SAFE . . . A Program for New Members

Consider one Kappa's story, a true personal experience.

"I was only eighteen. I didn't know any better. I pledged Kappa in the spring of my freshman year. We were a new group and I, along with my pledge sisters, was trying to figure out what a sorority was and what a sorority girl was.

"A fraternity asked us for an exchange the first week of pledgship. The guys were cute in their jackets and ties, carrying flowers into our meeting. We were all excited about the new social possibilities that go along with being Greek.

"The party started slowly...girls huddled together in groups, checking out the guys. Eventually the music and the beer loosened people up and the party got going. I was standing with a group of freshmen as we watched the seniors and tried to get the hang of this exchange scene.

"After a while Brett, the cute pledge class president, left the pool table and came over to our group. He talked to me and I felt important. We talked; I liked him. He got me another beer.

"I was only eighteen. I should have known better, but with a few beers clouding my brain, I followed Brett upstairs. I followed him into a bedroom. I don't remember what he said but pretty soon Brett was kissing me and it made me uncomfortable. I told him to stop and his arms got tighter. I told him "No!" and shoved him off.

"Brett looked me in the eye and

told me if I didn't have sex with him he'd tell all the Kappas that I had anyway and they would kick me out of my chapter. He held me down and he raped me. I don't remember anything but being suffocated.

"I went home and cried. I told myself I was a slut. I told myself I was raised to know that 'good girls' don't do that sort of thing, 'good girls' don't let that happen.

"Part of me knows that Brett had no right to do this to me. But another part of my brain says I could have run. I could have screamed.

"I was only eighteen, but shouldn't I have known better?"

This year every Kappa Kappa Gamma pledge will participate in KEEP SAFE...a Program for New Members, which deals with social issues and date/acquaintance rape. Date/acquaintance rape is defined as rape by someone the victim knows or has been dating. This sensitive and challenging issue is one of the most under-discussed and unreported of campus crimes.

The goals of this program are to help our members, especially our newest members...

- \* minimize the potential risks that social situations present

- \* decide how they feel about the issue of date/acquaintance rape

- \* discover what resources and support are available to their chapter and campus.

Statistics show that the new woman student is often away from home for the first time and must deal with sudden freedom from pre-

vious limitations. She has access to many new social opportunities, and regardless of state laws, with alcohol and drugs readily available. Diminished judgment resulting from the excessive use of alcohol and other drugs adds a volatile dimension to the already vulnerable position of new women students.

Kappa addresses this tough, disturbing subject with the sure knowledge that accurate information and increased awareness will work proactively to prevent our members from becoming part of the statistics below:

- Rape is the most frequently committed violent crime in the United States.
- A majority of rape victims are women between the ages of 15-19.
- It is estimated that of three women, one will be raped sometime in her lifetime.
- Of eight college women, one will be raped during her college years.
- Between 50% and 70% of all rapes are committed by someone the victim knows.
- Ninety percent of the college women in a 1985 study did not report their rape to the police and more than 30% did not tell anyone.

**Kappa wants each of its members to KEEP SAFE.**



# In Memoriam

Names which appear in this listing are from information received by Headquarters from June 1, 1989 to August 15, 1989.

## Akron, U. of - A

Baker, Margaret Reed, '23, d. 11/85

## Alabama, U. of - ΠΠ

Beale, Mildred Gaston, '27, d. 7/89

## Allegheny C. - ΓP

Lander, Wilma Elizabeth, '19, d. 11/84

## Arizona, U. of - ΓZ

Perkins, Jane S., '31, d. 1/89

## Arkansas, U. of - ΓN

Crowell, Pamela Turner, '65, d. 9/85

Larimore, Doris, '40, d. 6/89

## Butler U. - M

Lynn, Dorothy Black, '21, d. 7/89

## California, U. of, Berkeley, - Π<sup>Δ</sup>

Devlin, Jane Bunn, '59, d. 7/89

Dinwiddie, Evelyn Sanderson, '18, d. 9/87

Martin, Catherine Burton, '32, d. 7/89

Oliver, Alice Quayle, '25, d. 5/89

## California, U. of, Los Angeles - ΓΞ

Gerner, Kathleen Kline, '45, d. 8/89

Gillette, Marion Keeler, '44, d. 5/84

## Carnegie-Mellon U. - ΔΞ

Pindexter, Ann Hochswender, '44, d. 6/89

## Cincinnati, U. of - BP<sup>Δ</sup>

Marvin, Susanna Moore, '22, d. 7/89

Nenninger, Mary McGregor, '15, d. 6/89

## Colorado C. - ΔZ

Newman, Martha Tucker, '33, d. 6/89

## Denison U. - ΓΩ

Nash, Mary Pigman, '29, d. 11/88

## DePauw U. - I

Brooks, Leola Trueblood, '08, d. 2/89

Dale, Charlotte Jane, '36, d. 6/89

Fallon, Helen Grose, '22, d. 2/89

Peelle, Barbara Borland, '65, d. 7/89

## Drake U. - ΓΘ

Rhine, Margaret Purdy, '34, d. 5/89

## Idaho, U. of - BK

Lafferty, Carol Sternberg, '19, d. 5/89

McMahon, Clara Wipperman, '17, d. 7/89

## Illinois, U. of - BA

Abraham, Ruth Thrasher, '22, d. 7/89

## Illinois Wesleyan U. - E

Boulware, Florence Ryburn, '18, d. 11/84

Fingfeld, Ruby Langstaff, '37, d. 6/89

## Indiana U. - Δ

Carlson, Ruth Anderson, '31, d. 4/89

Derflinger, Norma Ballard, '39, d. 6/89

## Iowa State U. - ΔO

Thompson, Mary Bray, '52, d. 5/89

## Iowa, U. of - BZ

Carley, Della Nash, '39, d. 3/89

Scott, Isabel Rice, '27, d. 5/89

## Kansas State U. - ΓA

Sheetz, Jane Riach, '36, d. 6/89

## Kansas, U. of - Ω

Baugh, June Taylor, '28, d. 9/88

## Kentucky, U. of - BX

Leaphart, Mary Rodes, '10, d. 5/89

## Louisiana State U. - ΔI

Butler, Mary Pipes, '43, d. 7/87

Butterworth, Jane Crosby, '70, d. 2/89

Willis, Victoria, '80, d. 9/88

## Maryland, U. of - ΓΨ

Eierman, Martha Heise, '47, d. 5/89

Morgan, Claudine M., '29, d. 7/89

## Michigan State U. - ΔΓ

Bisbee, Margaret Clark, '41, d. 2/89

Coddington, Mary Agnes Smith, '40, d. 5/89

## Michigan, U. of - BA

Hedrick, Betty Fauver, '35, d. 8/89

Thorpe, Mary Connor, '33, d. 5/89

## Minnesota, U. of - X

Knox, Sally Baillon, '48, d. 5/84

## Missouri, U. of - Θ

Babb, Jean McCartney, '35, d. 7/89

Cooke, Virginia Kelley, '18, d. 10/88

## Montana, U. of - BΦ

Berube, Kathryn Fox, '56, d. 5/89

Knudsen, Harriett Krogh, '29, d. 8/87

## Nebraska, U. of - Σ

Goold, Claudia Page, '44, d. 5/80

Harley, Zella Roope, '22, d. 7/89

King, Selma Taylor, '18, d. 11/88

Redgwick, Mildred Taylor, '23, d. 5/88

## New Mexico, U. of - ΓB

Bruce, Annie Lee Duncan, '19, d. 7/89

Graham, Nellie Clark, '29, d. 2/89

Raman, Carolyn Kinnaird, '45, d. 7/89

## Northwestern U. - Y

Collett, Gwynneth Hamilton, '47, d. 6/89

Mathison, Jeanne Rowe, '41, d. 5/89

## Ohio State U. - BN

Fry, Marjorie Rahn, '37, d. 4/89

Gibson, Cathleen Haworth, '51, d. 5/89

Smith, Nancella Jones, '47, d. 6/89

## Ohio Wesleyan U. - P<sup>Δ</sup>

Gillette, Rosemary Brightman, '32, d. 5/89

## Oklahoma, U. of - BΘ

Kilgore, Kathryn Keegan, '38, d. 4/89

Lenahan, Angelena Frensley, '51, d. 6/89

## Oregon State U. - ΓM

Edwards, Helen Louise, '24, d. 7/89

Lidstrom, Mary Hobson, '45, d. 11/88

Webster, Helen Morris, '35, d. 4/89

## Oregon, U. of - BΩ

Dielschneider, Edra Anne Seufert, '28, d. 2/88

## Pittsburgh, U. of - ΓE

Brooks, Ruth Cousley, '32, d. 9/85

Conner, Berenice Gillette, '29, d. 1/89

## Purdue U. - ΓΔ

Burley, Helen Hoskinson, '41, d. 5/89

Johnston, Elizabeth Hancock, '39, d. 5/89

Richey, Margaret Frances, '35, d. 1/89

Watson, Ann Voelz, '75, d. 7/89

## Rollins C. - ΔE

Blackburn, Kathlyn Keller, '50, d. 7/89

## Stanford, U. - BH<sup>Δ</sup>

McCoy, Eleanor Anderson, '18, d. 7/88

Shirey, Jeanne Cutler, '38, d. 1/88

## Texas, U. of - BΞ

Holstead, Lisa Ann, '83, d. 7/89

## Toronto, U. of - BΨ

Carnworth, Mary Howitt, '18, d. 3/89

Ross, Marion Brewster, '19, d. 3/89

Thornton, Helen Kirk, '17, d. 1/88

## Tulane U. - BO

Dinwiddie, Lynne Northrop, '24, d. 11/88

Tuller, Loyola Thibaut, '24, d. 7/89

## Washington State U. - ΓH

Hansen, Sarah Wenz, '23, d. 2/88

## Washington U. - ΓI

Conrad, Elizabeth Siegmund, '37, d. 7/89

## Washington U. of - BΠ

Burnett, Blanche Troutman, '14, d. 5/89

## West Virginia U. - BY

Brown, Mary Virginia, '26, d. 7/88

Welton, Eleanor Miller, '20, d. 12/88

## Whitman C. - ΓΓ

Shidler, Nita May, '18, d. 12/88

## Wisconsin, U. of - H

Wheeler, Josephine Carle, '23, d. 9/88

## Wyoming, U. of - ΓO

Rask, Marie Mathew, '27, d. 6/87

## CLOSED CHAPTERS

## Adrian C. - Ξ

Harris, Margaret Graham, '30, d. 5/89

Paterson, Helen Hitchings, '11, d. 7/89

## Middlebury C. - ΓA

Lardner, Adelma Hadley, '25, d. 12/88

McClintock, Florence Porter, '26, d. 2/89

Wait, Irene Avery, '26, d. 9/83

Katherine Wade Pennell,  
BN—Ohio State, died Sept. 27, 1989.  
"Kay" served the Fraternity as  
Executive Secretary from 1968-72.



## WHY GREEK?

by Gini Anding La Charité, GK—William & Mary, Fraternity Historian

Kappa Kappa Gamma is a Greek-letter fraternity because the founders patterned their group after the men's fraternities on the Monmouth campus. The men's groups at the time had Greek letters for names, so the first Kappas resolved to do the same: "We determined that nothing short of a Greek letter fraternity would satisfy us." They also knew that the Greek letters should stand for the motto. They wanted to use the letters KKG for some reason lost to history, and so our name came into being and our motto was imposed on those letters. It is a curious fact of Fraternity history that the actual Greek letters were originally more important than the motto: "You have doubtless noticed that the letters on our pins are quite a free translation from the motto, but we wanted those particular letters and were sublimely indifferent to the freeness of the translation." To establish a fraternity of women with the specific letters KKG was the "something new" they created.

The men's groups were Greek-letter societies because of Phi Beta Kappa, the original model for the college fraternity system. When Phi Beta Kappa went public, it became common knowledge how to name a secret society and establish symbols. In the beginning, the criteria for membership in Phi Beta Kappa was senior class standing, good fellowship, and literary study, but the reasons why the founders chose Greek letters and a Greek motto seem neither esoteric nor even very noble. It is generally accepted that they opted for Greek in order to honor one of their number who was the best Greek scholar in the college! It is also thought that they elected Greek partly in jest because at the time a gentleman who knew Greek was considered fully educated, while one who knew only Latin was thought to be "half-educated"! It has even been suggested that when they met to organize the group, they were inspired by being in the Apollo Room of the

Raleigh Tavern. A far more lofty explanation is that they wished to counter the prevalent atmosphere of "social decay," emphasis on a college social life of "vice and dissipation" (gambling, drinking, and the "sowing of oats"). In this context, the use of Greek may have seemed to convey better than English or Latin a nobility of self-development within the fraternal bonds of fellowship and mutual helpfulness. The determination of one of its aims as the improvement of the social quality of life may well explain why one of the stars of Phi Beta Kappa stands for Morality.

The nineteenth century was a period of neo-Platonism in philosophy and literature, so it would have been natural for all fraternity founders to look to Greek thought when establishing their Greek-letter groups. Neo-Platonic thought holds knowledge as its goal, and the highest idea or ideal is Good, an esthetic principle. A life of reason is a life of order and beauty, with wisdom residing in the figure of the poet-philosopher, not the saint or soldier. True beauty is then intellectual, and love is the active pursuit of that truth, the search for a utopia of order, harmony, and mutual understanding. The study of literature in a nineteenth-century university was based on the conviction that only certain readings provide access to accumulated virtue and culture, the realms of high thought, and enable the individual to experience a synthetic whole. In their chapter literary activities, the Greek-letter fraternities literally created the "Greekness" of the evolving system, as each group added to its storehouse of secrets and symbols.

The ancient Greeks did not have fraternities, and the modern college fraternity system did not evolve from ancient Greek practices. It may well be that the system as begun by Phi Beta Kappa has its actual origins in the European Illuminati movement, or Freemasonry, or,

as sometimes thought, Thomas Jefferson himself. The ancient Greeks did have secret societies, the thiasos or club, which grew out of workers' guilds; these groups met regularly, held banquets and games, adopted a patron deity to worship, and undertook certain group activities; the thiasos or guild of builders was the ancestor of the freemasons. Plato's Academy was a religious thiasos which was dedicated to the Muses; it was also considered quite radical in its time because women were admitted! However, the concept of a secret social fraternity as we know it was alien to ancient Greece.

Why Greek? KKG is Greek by custom and tradition. Our use of Greek letters is patterned on the men's fraternities, which grew out of Phi Beta Kappa. Despite this general borrowing, the nature of our particular Greek heritage in our symbols, secrets, and insignia remains very much the expression of purely Kappa beliefs, practices, and ideals.

**The Gift That Will Be  
Enjoyed All Year -**



**Is Just a Phone Call Away**

- More than 600 popular magazine titles available - for children, youth and adults.
- Over 40% of subscription income is retained by KKG for the Rose McGill Fund—our resource for Kappas in need of emergency assistance.

**Dial Toll Free - 1-800-554-7673**  
(except Ohio)

Call-in orders may be charged on your VISA or MasterCard.



# Saying "Please" and "Thank You"

by Lois Catherman Heenehan, BΣ—Adelphi

**H**ave you read Robert Fulghum's delightful piece, "All I Really Need to Know I Learned in Kindergarten"? It reminds us that some wonderfully basic civilities were learned very early in life. For example, among the first things we were taught to say were... "Please" and "Thank you."

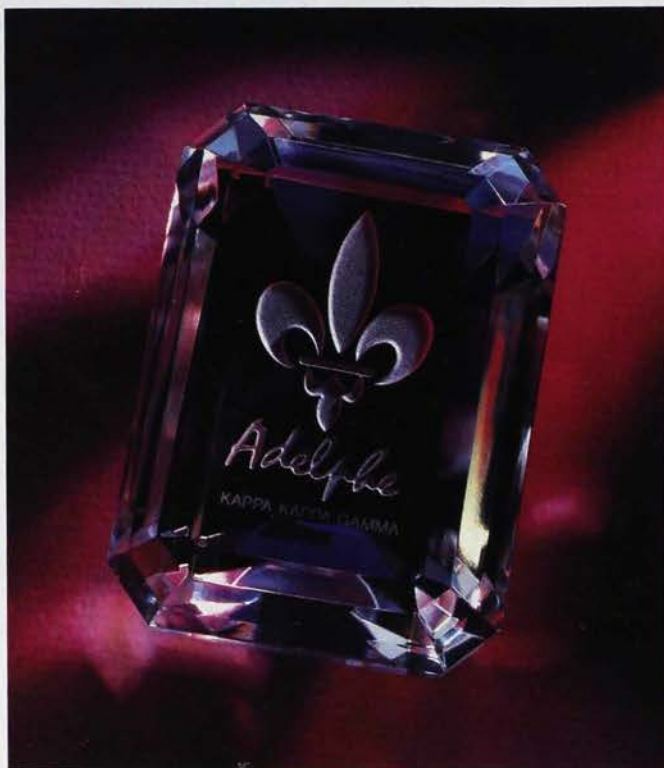
Right now, Kappa is putting both of these expressions to use in The Adelphe Campaign. We have all been asked to give, "please," and many donations have been made. Now it is time to recognize some donors with a most sincere "thank you."

The Adelphe Society is made up of those who have given exceptional donations to The Adelphe Campaign. A gift of \$10,000 or more in cash or stocks qualifies a donor for inclusion in The Adelphe Society. A special show of appreciation is due to individual members and to alumnae groups for their contributions. Among those who are part of The Adelphe Society are the following:

**Paulina Tomlin Beall**, ΓΧ—George Washington, was known to all as Polly. Her service in virtually every advisory position with three chapters and as Lambda Province Director of Chapters, as well as her selection as a recipient of the Loyalty Award, barely touch on Polly's Fraternity involvement. Her love of Kappa's ritual and her unique ability to inspire and bring greater understanding of ritual to chapter members was exceptional. A Speakers Series for Lifeskills has been established in her memory to bring to Convention and other Fraternity gatherings, outstanding inspirational speakers to enhance the development of positive ethical leadership within our membership. This endowed series will be funded by Polly's gift to The Adelphe Campaign and enhanced by gifts from her many friends.

**Miriam Austin Locke**,

ΓΠ—Alabama, has given a major gift to The Adelphe Campaign. "Doc," as many know her, has served her chapter in many advisory board positions and as House Board President. The Fraternity has been fortunate to have her serve as Mu Province President, Chairman of Scholarships and of Graduate Fellowships, and as National Panhellenic Conference Alternate and Del-



egate. A 50-year Kappa and a Loyalty Award recipient, "Doc" requested that her gift be designated in honor of Joyce Thomas Fuller, ΔΥ—Georgia, and in memory of Edith Reese Crabtree, ΒΓ—Wooster, Fraternity President 1952-1956, and Clara O. Pierce, ΒΝ—Ohio State, Executive Secretary 1929-1969.

**Lucille Caswell Davids**, ΓΜ—Oregon State, has given a donation to The Adelphe Campaign to establish the Lucille Caswell Davids Scholarship to be awarded each year to a qualified member of Gamma Xi—UCLA. Long associated with Gamma Xi, Lucille also helped found the Santa Monica Alumnae Association, served as president of the local chapter of the American

Association of University Women and was very active in PTA, United Way and Girl Scouts of America.

**Mildred "Diane" Ross Fennekohl**, Υ—Northwestern, was a "gracious and lovely lady whose life style was the epitome of Kappa's highest ideals." A staunch supporter of causes promoting higher education and perpetuation of time-honored standards, Diane served as President of the Houston Alumnae Association and was a Citation Member of the Houston Panhellenic Association in recognition of her outstanding leadership and service to the Greek community. Her donation established the Mildred Ross Fennekohl Endowment Fund for Education to provide assistance in the form of scholarships for generations of Kappas. Her devotion to family and to Kappa is evidenced in her daughter, Rosslyn Fennekohl Crawford, ΒΞ—Texas, and granddaughter, Alicia Crawford, ΓΦ—SMU.

**Alumnae in Dallas, Texas**, have donated substantial funds to create the Dallas Alumnae Association Endowed Scholarship in memory of Janet Jones Burford, ΒΞ—Texas. The scholarship will be given annually

to a Kappa underclassman who resides in or attends school in Theta Province and who has demonstrated superior scholastic ability. Dallas alumnae historically have given 50% of their philanthropic funds to the Fraternity, with The Adelphe Campaign the logical recipient of the proceeds of their successful Holiday Home Tours.

Janet Burford, in whose memory the scholarship was given by Dallas alumnae, was a very active volunteer in the community. Her commitments ranged from PTA to the Children's Medical Auxiliary and the Dallas Symphony. Janet was devoted to Kappa and among her many contributions, served as Theta PDC. With two Kappa daughters, one cur-



currently attending the University of Texas, it is only natural that she recognized Kappa as her favorite volunteer experience.

**The Houston Alumnae Association** and The Charitable Foundation of Houston have given generously of the proceeds of their 1986 and 1988 Christmas Pilgrimage

home tours to The Adelphe Campaign. Their donation is designated for Kappa scholarships for Texas residents attending colleges and universities in the state. The tours, which involve up to 500 Kappa workers, are held in even years. They receive underwriting from the community and since their inception

have generated more than \$100,000 for Kappa philanthropies. A portion of Houston's donation goes to the CHOICES program and to the Heritage Museum in honor of Martha Hodson Erwin, BΞ—Texas. A past President of the Houston Alumnae Association, Martha is noted for her knowledge of antiques.

To all Kappas who are supporting The Adelphe Campaign, but particularly to these members of The Adelphe Society who have given so generously, the Fraternity extends a heartfelt ...

THANK YOU!

## The Adelphe Society

*Anonymous donation*

*Rebecca Stone Arbour, ΔI—LSU*

*\*Paulina Tomlin Beall,*

*ΓX—George Washington*

*Mary Jane Jackson Crist,*

*ΓZ—Arizona*

*Jane Turner Curry, Δ—Indiana*

*Lonnie Hoke Curtis, X—Minnesota*

*Lucille Caswell Davids,*

*ΓM—Oregon State*

*Lucy Davidson, EE—Emory*

*Dee Speed Elder, ΓΨ—Maryland*

*\*Diane Ross Fennekohl,*

*Y—Northwestern*

*Sue Darby Gaston, ΓN—Arkansas*

*Barna Hurt Graves, ΓN—Arkansas*

*Sally Iredell Gulick, A—Akron*

*Kay Smith Larson,*

*BII—Washington*

*Miriam Austin Locke,*

*ΓII—Alabama*

*Carol Anna Nichols, ΔY—Georgia*

*Sally Moore Nitschke,*

*BN—Ohio State*

*\*Marie Mathew Rask,*

*ΓO—Wyoming*

*Helen Andres Steiner,*

*BII—Washington*

*Jean Yingling Teteris,*

*BN—Ohio State*

*Jane Bothwell Waddill, BΞ—Texas*

*Catherine Kelder Walz,*

*BA—Michigan*

*Jean Hess Wells, ΔY—Georgia*

*Marian Klingbeil Williams,*

*Θ—Missouri*

(\*Deceased)

*Dallas Alumnae Association*

*Houston Alumnae Association*

*Kappa Kappa Gamma Charitable*

*Foundation of Houston*

*Tellepsen Foundation*



photo by Harriet Holleman



Dallas Tour Committee

photo by J. Gray Photographs



Houston Tour Committee



Paulina Tomlin Beall,  
ΓX—George Washington



Miriam Austin Locke,  
ΓII—Alabama



Lucille Caswell Davids,  
ΓM—Oregon State



Mildred "Diane" Ross Fennekohl,  
Y—Northwestern



## The Sweet Fragrance of Success . . . Robin Burns, BT

Rarely does a person achieve so much, so quickly in the fast-paced, competitive perfume industry in New York City. But in the case of Robin Burns, BT—Syracuse, competence and achievement are the cornerstones of her success.

Robin Burns, President of Calvin Klein Cosmetics Corporation, is the force behind the wonderfully controversial "Obsession" and the latest "Eternity" perfumes. Robin was hired four years ago to help turn around the fledgling perfume division which was losing millions a year. With Robin at the helm, the company quickly produced one hit after another and was soon posting sales of over 150 million dollars a year.

How inspirational that all this energy comes from a former chapter President who hails from Cripple Creek, Colorado. And her success came the proverbial old-fashioned way . . . she earned it.

As an only child, Robin always felt a strong pressure to achieve — from her mother and herself. In Cripple Creek, life was quite relaxed but she made the most of what her town and schools had to offer. An honor student, cheerleader, and competitive ice skater, she was recruited by Syracuse University. She loved it and enrolled.

It is her college days with Kappa that made those years so special. Robin was very interested in joining a sorority. She said, "I had a real need to find some people that I related to and could share those years with." In Kappa, she found what she was looking for — sisterhood. Through her chapter activities Robin developed her theory of teamwork which she still follows today: "You need a balance of strength. Being president of a sorority or a company has similarities. Your success depends on the quality of people working with you. The one thing I learned from Kappa is that harmony can be achieved if everyone is working happily together."

Through a combination of scholarships and jobs, Robin graduated from Syracuse with a degree in busi-



**Robin Burns with the "FiFi," presented for the best women's fragrance introduction of the year in limited distribution.**

ness and education. She interviewed with a number of companies and was most impressed by Bloomingdale's, the landmark New York department store. She moved to the big city and shared a one-bedroom apartment, *sans* furniture, with four friends.

Bloomingdale's turned out to be her launching pad, both professionally and personally. Robin says, "It was survival of the fittest and you'd better be resourceful. It is more competitive internally than externally." After working in various departments of the store, she was transferred to the men's fragrance section. The climb to the top was not overnight — it took five years. From this position she eventually became the cosmetics merchandise manager for all the stores. That's when she caught the attention of Minnetonka Chairman Robert Taylor, who had purchased Calvin Klein Cosmetics.

The rest is the stuff of which dreams are made. Mr. Taylor hired the 30 year-old Robin, who had no manufacturing experience, to turn the company around. Robin's strength is her people skills and

that's what Mr. Taylor was looking for. Where did Robin acquire these great people skills? Many were gained through Kappa Kappa Gamma, the meaning of sisterhood.

Her ability to lead and motivate others explains the star quality that led Robin to the top of her profession. Robin is credited with creating "Obsession" and "Eternity." "Obsession" was created in the mid-1980's and reflected the mood of the time. As Robin explained, the fragrance symbolizes the obsession people had with their careers, appearance, and physical fitness. "Eternity" is slightly more romantic. As *Women's Wear Daily* puts it, "Eternity" is about "wedding rings, parents and children, snuggling on the beach, long walks together and family life." But Robin is always one step ahead of the game. "I'm always thinking about what I'll do next. As successful as we've become, there are so many other things that we can do."

It is this forward thinking that propelled Robin to where she is today. From her office high in the glamorous Trump Tower in Manhattan, Robin runs a beauty empire, never losing sight of the importance of her staff. Her positive attitude and reputation for fairness make her a respected executive. Robin's career demands make balance an important goal. "What Kappa Kappa Gamma ultimately provided for me was the opportunity to forge life-long friendships with some wonderful women. These enduring friendships offer a balance in my life that becomes more important with each new challenge in my professional career."

Ski trips, working out at home, and get-away weekends at her Long Island beach house provide respite from busy work weeks.

Personal and career success...who says you can't have it all? Robin has inked a "rock solid" five-year contract to head the Calvin Klein Cosmetics. Robin will guide it through a long-term plan to build both U.S. and global business.

—Donna Rose Houchen  
ΓΞ—UCLA



# The Official Kappa Kappa Gamma Fraternity Watch

A Seiko Quartz timepiece featuring a richly detailed three-dimensional re-creation of the Fraternity Crest on the 14 kt. gold-finished dial. Electronic quartz movement guaranteed accurate to within fifteen seconds per month. Earliest reservations entered will be guaranteed Christmas delivery. Satisfaction guaranteed or returnable for full refund. Full three-year Seiko warranty.

For faster service, credit card orders may be placed seven days a week from 9 a.m. to 9 p.m. (Eastern Time) by telephoning toll free 1-800-523-0124. Pennsylvania residents only should call 1-800-367-5248. All callers should then request to speak to operator 637JM.

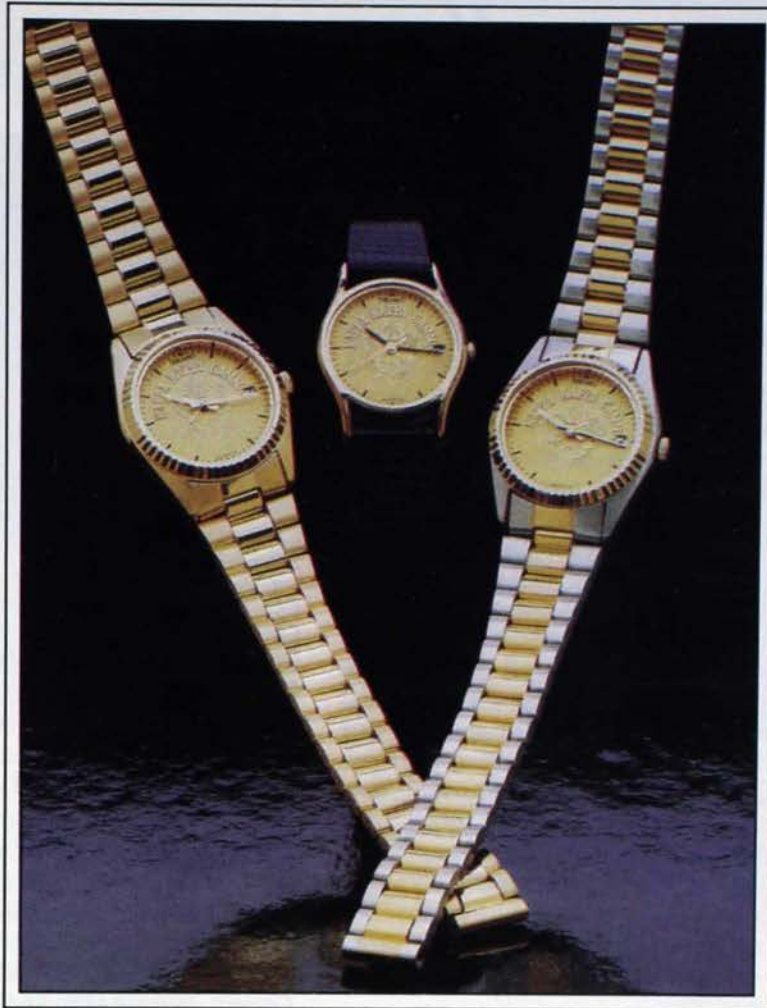


Illustration reduced. Actual diameters of watches are  $\frac{1}{4}$  inch.

Detach order form below. Mail orders should be sent to Kappa Kappa Gamma Fraternity, c/o P.O. Box 511, Wayne, PA 19087.

## Personal Reservation Form

Please accept my order for the following Official Kappa Kappa Gamma Fraternity Watch(es):

QUANTITY \_\_\_\_\_ Ladies' Seiko Quartz Wrist Watch with Leather Strap (#KKG-SLS) @ \$200\* each.

QUANTITY \_\_\_\_\_ Ladies' Seiko Quartz Two-Tone Bracelet Wrist Watch (#KKG-SLT) @ \$230\* each.

QUANTITY \_\_\_\_\_ Ladies' Seiko Quartz Gold-Tone Bracelet Wrist Watch (#KKG-SLG) @ \$255\* each.

All purchasers please add \$5.75 per watch for handling and insured shipping charges.

\*On shipments to Pennsylvania only, please add 6% state sales tax.

I wish to pay for my watch(es) as follows:

☐ By a single remittance of \$ \_\_\_\_\_ made payable to "Kappa Kappa Gamma Watch", which I enclose.

☐ By charging the amount of \$ \_\_\_\_\_ to my credit card indicated below.



Full Account Number:

--	--	--	--	--	--	--	--	--	--	--	--	--	--	--	--	--	--	--	--

Mo.

--	--

Expiration:

--	--	--	--

SIGNATURE \_\_\_\_\_

### MAIL ORDERS TO:

KAPPA KAPPA GAMMA FRATERNITY  
c/o Post Office Box 511  
Wayne, Pennsylvania 19087

NOTE: Earliest orders entered will be assured Christmas delivery.

Please allow 6 to 8 weeks for shipment of later orders.

PLEASE PRINT PURCHASER'S NAME CLEARLY. IF "SHIP TO" ADDRESS IS DIFFERENT, PLEASE ATTACH SHIPPING ADDRESS TO ORDER FORM.

NAME \_\_\_\_\_

STREET \_\_\_\_\_

CITY \_\_\_\_\_ STATE \_\_\_\_\_ ZIP \_\_\_\_\_

CREDIT CARD PURCHASERS MAY CALL TOLL FREE 1-800-523-0124; PA. RESIDENTS ONLY SHOULD CALL 1-800-367-5248. CALL SEVEN DAYS A WEEK FROM 9 A.M. TO 9 P.M. (EASTERN TIME). ALL CALLERS SHOULD ASK FOR OPERATOR 637JM.



# Profiles

## As The World Turns . . . With Helen Wagner Willey, A<sup>Δ</sup>

Nancy Hughes of the long-running daytime TV program, *As The World Turns*, is a familiar face to many of you, but did you know that she is Helen Wagner Willey, A<sup>Δ</sup>—Monmouth, a Kappa sister?

Since the spring of 1956, Helen has been playing the much loved and revered grand matriarch of Oakdale's Hughes family, giving her the distinction of continuing in a role longer than any other current actor.

A Texas native, Helen and her sister Ruth attended Monmouth College as had their parents. Ruth was a member of the local when it became Alpha Deuteron and Helen was a member of the first pledge class. As one of six legacies in the twelve member pledge class, Helen remembers the thrill of having her older sister pin on her very own Kappa key during initiation. Enormously positive collegiate experiences profoundly affected Helen's personal and professional life, and Kappa was an integral part of these experiences.

While at Monmouth Helen majored in both speech and music, and it was here she had "that breathtaking experience" of finding teachers who made her see the "high adventure that learning can be." In the summer of her junior year her piano teacher took her to New York to attend a master class, thereby opening the gates of the Great White Way to this future performer. After graduation, a short flirtation with becoming an opera singer was followed by three years of studying piano with Abram Chasins, renowned pianist, composer, author, lecturer.

During her first professional outing, Helen's talents were recognized by the great Oscar Hammerstein which led to her first Broadway show — the musical, *Sunny River*. While in New York to audition for the show, she landed a "plum" job as a church-soloist. This turned out to be quite fortunate as the musical opened to mixed reviews at the St. James Theatre four days before Pearl Harbor and closed a month later. Helen was a church-soloist for



Helen Willey with her "transportable hobby" on the Hughes' living room set at CBS.

five years to keep a roof over the fledgling actress' head while she auditioned for parts.

For years, Helen alternated between musicals and dramas on Broadway, off-Broadway, and in summer theater and touring companies, playing leading roles in productions which included *A Doll's House*, *Merchant of Venice*, *A Streetcar Named Desire*, *The Bad Seed*, *Lion in Winter*.

After the war, television was in its infancy providing great opportunities for Helen which eventually led to the pilot of *As The World Turns*...and the rest is television history! Helen's success is certainly an inspiration to aspiring actors, but she strongly advises pursuing a show business career for the love of theatre rather than with dreams of fame and fortune considering today's intense competition for every role!

Helen and her husband, actor and producer Robert Willey, live in Mt. Kisco about an hour from New York City. Those 7 a.m. studio calls come early and often, but even with her rigorous schedule Helen is very active in her church, volunteers at the Metropolitan Museum, and found time last March to speak to the new Long Island Kappa Alumnae group.

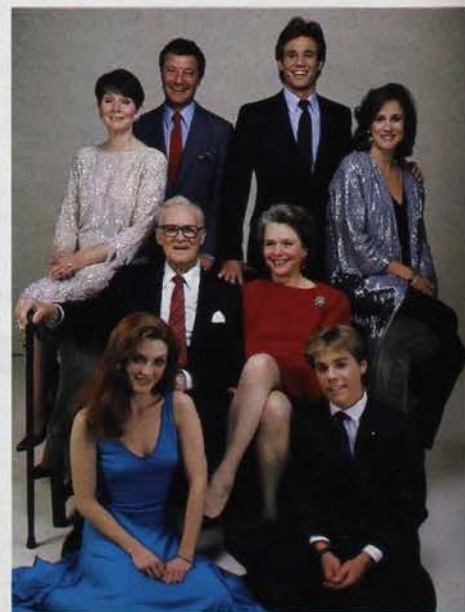
In 1963, Monmouth College presented Helen with their Distinguished Alumna Award. In 1988, she was named national chairman of The Wells Theatre Campaign to raise money for a new Monmouth campus theatre. Surely the capstone of her enduring relationship with Monmouth came in 1988 when the College bestowed on her an honorary Doctor of Humane Letters. She was the commencement speaker and "enthralled" the audience by sharing her experiences and philosophy for living.

"Your self is of priceless worth...And there are too many facets to the gem that is you for you foolishly to settle for just one. You turn one facet to the light in one situation, another facet in another, display different facets with different people, but it's still the same gem — you...

"You can make of your many-faceted gem of a self anything you want, but you personally have to do it. The search for self is really polishing a different facet with each new adventure. And knowledge is power...

"God is, and men are brothers, and with that knowledge you have all the power you can ever use."

—Robin Whitfield Brown,  
ΔΨ—Texas Tech



Nancy Hughes with her family.



## Nature Whispers . . . to Carrye E. Pugh Schenk, BN

"Whisper Pictures," "Secret Places," "The Ultimate Ornament" — names that evoke images, feelings, moods and special times are among the titles of creations by artist Carrye E. (Betsy) Pugh Schenk, BN—Ohio State. Much of her work reflects her love of nature.

Having demonstrated her artistic abilities on posters, programs and covers for a variety of sports and activities in her high school, Betsy went on to study art at Ohio State where the faculty felt she showed "some of the finest raw talent" they had ever seen. Her BFA degree led to several years of work as an interior designer in Columbus.

In 1965 Betsy and husband Bill moved to rural Vermont, where the pine woods surrounding her studio provided wonderful wild flowers and creatures to inspire her. At first, living in a converted barn, Betsy forced herself to sketch — fence posts, birches — whatever was in view. "A charcoal sketch of an imaginary owl really started everything," says Betsy today. An early sketch of the imaginary owl in flight illustrates "Kappa Is Always There for You" in the Summer 1989 issue of *The Key*. Her charcoal sketches include a great variety of birds and wild crea-



tures — even skunks! — and some more familiar household animals in the person of appealing Siamese cats. The sketches are printed in black and white; each is individually hand-tinted with watercolors to produce one-of-a-kind wildlife replicas.

Carrye Originals, of Richmond, VT, was established as an outlet for her nature studies and wildlife art, a natural outgrowth of Betsy's enjoyment and appreciation of the wild beauty around her. But Betsy she remains to family and friends.

"Whisper Pictures" is Betsy's name for her original watercolors on a black board background. She feels they are "an illumination of fleeting radiance, which, experienced however briefly, continue to hover in the quiet corners of memory."

"Secret Places," a new line of oil landscapes, is a series of tranquil oil paintings designed "to recall or create a memory of your own special somewhere — a place to gentle the heart and revitalize the spirit."

The pine woods of Vermont's Green Mountains surround, but do not contain, Betsy. She has illustrated several nature books published by W.W. Norton and Simon and Shuster, had numerous one-person shows and been active in various Vermont craft and art organizations. She has been juried into many national and international competitions, including the Cincinnati Zoo's Wondrous Wildlife show, Vermont Institute's annual Wildlife Art shows at the Natural Science Center in Woodstock, and the Salmagundi Art Club's non-members show in New York City.

Artistic involvement is a part of family life in the Schenk household. Bill is chairman of the theatre department at the University of Vermont, where he teaches scenery and lighting design, and where daughter, Morgan, is a student and a member of Zeta Delta—Vermont. When Morgan was a baby, Betsy created "The Ultimate Ornament," a holiday decoration made with the finest Austrian rhinestones and crystals (see cover). They are "Victorian confections" — more than 500 made and no two alike. Quite a few have been done in blue and blue for Zeta Delta, and a painting called the Kappa Owl hangs in the Beta Nu house at Ohio State, reaffirming Betsy's appreciation for her early years as a woman and as an artist.

Betsy says her "Ultimate Ornaments satisfy my need for emeralds and diamonds." For others, her sensitive and delicate watercolor and oil renditions of nature's magic satisfy the need for tranquil beauty and peaceful reflection.

—Lois Catherman Heenehan,  
BΣ—Adelphi



One of Betsy's "Secret Places."



A "Whisper Picture."



# Tours of Kappa Holiday Homes = A Winning Formula

by Robin Whitfield Brown, ΔΨ—Texas Tech

Holiday Homes Tours have provided the answers for three alumnae associations in their search for a perfect philanthropic project. The tours combine fund raising for local charities and Fraternity scholarships and philanthropies with an opportunity for Kappa fellowship.



## KANSAS CITY



**I**ncredibly, the Kansas City Alumnae Association is gearing up for its 38th annual tour! Hundreds of thousands of dollars have been returned to their community and given to Kappa by the energetic efforts of three to four hundred alumnae who work on the tour each year.

In the summer and fall, themes and decorations are selected to complement the architecture and reflect the interests of the owners of the five homes to be toured. Kappa volunteers decorate for Christmas or Hanukkah with items that are generally handmade. Every home contains decorations that any homeowner could duplicate; decorating ideas and instructions are contained in the brochure given to every tour-goer. The homes are open one evening for a Candlelight Tour and the following day from 9 a.m. to 9 p.m.

In addition to the decorated homes, each year a Gourmet and Holiday Shop stocked with goodies provides fanciful shopping opportunities. A new addition in 1988, "The Petite Boutique," contained lovely donated items which were sold for pure profit. In 1987, after supporting one local philanthropy for thirty-six years, KC alumnae de-



cided to diversify and award tour proceeds to several recipients in the area of rehabilitation, with the balance going to Kappa philanthropic funds. The measure of the hard work and dedication of Kansas City

Kappas is an enviable tradition of gifts to the community and our Fraternity through the generous financial support generated by their magnificent holiday tours.





# HOUSTON

**S**leek sophistication has become the hallmark of the Houston Christmas Pilgrimage, which has evolved over the years from homemade Christmas decorations to European trinkets. Held biennially, the first Houston Pilgrimage was in 1931 and raised \$400. Over the years selected rehabilitation projects in Houston have been greatly enriched by the increasingly spectacular success of this Kappa philanthropic effort.

In 1988 the two and one-half day Pilgrimage featured four distinctive homes in traditional, Mediterranean, French, and Georgian styles. Leading Houston florists decorated the homes in the theme of "Christmas Collections," by displaying collections of Santas, Nativity scenes, Christmas trees, and even hundreds of Raggedy Ann dolls.

The funds for the four chosen charities were earned through ticket sales, underwriting by various individuals and corporations, program advertisements, and the sale of Christmas items in the Marketplace. Fund raising has become more refined by seeking underwriters for larger amounts of money and expanding program advertising. For example, in 1988 four local realtors underwrote the decorations for each of the homes on tour.

The Marketplace, held in the atrium of Houston's Decorative Center, featured six mini shops, each with a different theme. The Kappa Kitchen, for instance, displayed numerous culinary gift items. Shoppers were able to purchase everything from fully decorated Christmas trees, to unique needlepoint items, to boxed lunches. Staffing the store were alumnae wearing festive red and green plaid taffeta aprons, adding a special touch to the already beautiful and elegant atmosphere.

The night prior to the tour a gala was held at the Marketplace for Kappas and their friends, providing an opportunity to see the homes, do some early shopping, have dinner and dance the night away.







Alternating years with Houston's Pilgrimage, the Dallas Alumnae Association will present its twelfth biennial Christmas Tour the first Wednesday and Thursday of December 1989. The theme, "A Family Portrait," will be carried throughout the beautifully executed brochure, the decor of the four Kappa's homes to be toured, and the selection of local beneficiaries for the funds raised.

Many decorations in each of the homes are created in workshops held in the spring, summer, and fall preceding the tour by the four Dallas Alumnae groups. The Senior Day Group decorates three of the homes and the Junior Day group the fourth, which always centers around children and the young family. Upon entering each home, beautiful music greets the tour-goer with talented Kappas providing the harp, piano, or choral offerings. Cookies might be baking in the oven or spiced tea simmering on the stove, providing tantalizing aromas to enhance the atmosphere.

A Christmas store, where lunch is available, is open in a nearby church and is crammed with holiday delights...wreaths, needlepoint pillows and stockings, baked goods, and much more.

The Preview Party is held on Tuesday evening before the tour so that Kappas and their husbands may view the homes and enjoy an evening of fun as a combination celebration and thanks for the year of loving labor.

Dallas gives half the proceeds of the tour to local charities in the area of rehabilitation, with the other half going to Kappa scholarships, including the Janet Jones Burford Endowed Scholarship presented to The Adelphe Campaign in 1988.

The goals of the Dallas Christmas Homes Tour are two-fold: first, to raise money for philanthropies and scholarships; second, and perhaps more important, to join with other Kappas in a worthwhile project that is fun while also providing the opportunity to strengthen Kappa bonds of sisterhood and friendship.



by Chari Beaudry,  
BII—Washington

## "Celebrating the Arts"

**K**appas have always exhibited spirit and enthusiasm, but what is that "special something" that directs a woman toward the Fine or Performing Arts? Those of us who chose this path were drawn to it at different stages in our lives and through many different channels. Some begin careers in the arts at middle age, while others practiced their "crafts" during their active Kappa days, performing in rush skits, painting scenery or murals, leading songfests, writing the chapter newsletter.

According to *Harper's*, "The arts are civilization's storehouse of felt values, the rendering of what has seemed important to those of powerful imagination and profound feeling and great mastery of expression."

Ours is by no means an exhaustive look at Kappa artists. Rather, this is just the start of a continuing regular celebration of Kappas and their art. From live theater to oil or watercolor painting, from a conductor's podium to choreography, the stories that follow are bound to inspire the artist in all of us.

### Art

**Maija Kokko Baynes** ΔY—Georgia, and Paier Art School (Hamden, CT) is adding to her fame as an American watercolorist, and is a "Signature" member of the National Watercolor Society, (having been accepted from over several thousand entries).

Maija is inspired by the transparent skies, as well as the lush flow-



By Judith Gill Brien, Y—Northwestern. Top: handpainted tiles; bottom: 1989 Holiday Plate. A new design is added to her holiday collection each year.

ers and plants of her home in Lake Wales, FL. Her paintings are spontaneous, free, and exciting in execution, with dramatic positive and negative shapes. Her works hang in private and permanent corporate collections throughout the USA, Canada, and in Europe.

**Judith Gill Brien**, Y—Northwestern, BM—Colorado, studied art as an undergraduate. She later shared her talents as a teacher while raising her children. Active in Junior League, Judith began to exhibit her ceramic works and custom "backsplashes" for kitchen and bathroom which can be found in homes from Texas to California to Kansas. Her works have continued to gain popularity through commission and word-of-mouth referrals; regular clients add her annual Christmas plates to their collections.

One "Bisqueware" collection features "Country French or primitive Pennsylvania Dutch. Most of the pieces portray the artist's love of nature and the farm. Each piece is individually handmade and painted by Judith without the use of transfer or decal." This collection appeals to the currently very popular country or folk art design.

**Angelyn Sanders Chandler**, ΓΠ—Alabama, exhibited a collection of paintings, entitled "Magical



Maija K. Baynes, ΔY—Georgia, with prizewinning watercolor.





**"Bisqueware" by Judith Gill Brien.**

Manuscripts: Stories Without Words" at the Great American Gallery in Atlanta, Georgia. Of the collection, she said, "I draw on childhood motifs as a guide to self understanding. My marks are those of archaic man as well, and by using them, I tap into the source of all artistic development.

The painting, "Riding on a Beam of Light," used as the coverpiece for the show announcement, is vividly colored and dramatic. Angelyn, who works on both canvas and paper, resides in Atlanta and was one of two Graduate Counselors and organizers of EE—Emory in 1959.

**Joan Hierholzer, BE—Texas,** creates oil paintings of the 21st century. In an exhibit of "Technology Energy" at the Phoenix Gallery, New York City, Joan displayed paintings inspired by the TFTR project of the James Forrestal Center in Princeton, New Jersey—the



**Susan S. Kennedy, FB—New Mexico,** with one of her paintings.

mission of which is to find an environmentally acceptable alternative to nuclear fission energy. Joan uses images of scientific equipment in her paintings, and counts among her many corporate sponsors and collectors NASA, Chemical Bank, Westinghouse Elevator Company, and Hiram College, Ohio.

**Mary Shaw Horn, ΔE—**Carnegie-Mellon, is a founding member of her chapter. Mary, a well-known Pittsburgh art teacher and artist, has participated in the University of Pittsburgh's "Generations Together Artist Resource Program." In a visit to an art class at Schiller Classical Academy, she was quoted by the *Pittsburgh Post-Gazette* as saying, "when you paint, splash a lot but learn to put your ideas down. The fact is, you have to put one foot in front of you in life. Keep in mind how very special you are."

As a part of the University's Center for Social and Human Research project, Mary's works were displayed in a group show entitled "Arts Across the Generations" which was held at the William Pitt Union Gallery.

**Susan Seligman Kennedy, FB—New Mexico,** has been painting since childhood and has built a career on her talents of calligraphy, graphic design and painting.

Recently Susan was honored as the inaugural exhibitor in a show entitled "Reflections of New Mexico" at the opening reception for the new University of New Mexico Centennial Gallery. She is a watercolor "realist" and paints landscapes, florals, still lifes, and animal portraits.

Co-owner of a calligraphy business called the Lettering Shop with Kappa sister, Laura Lee Moore, GZ—Arizona, Susan contributes her calligraphy and design skills on behalf of the Albuquerque Alumnae Association. Most recently she supplied the art work for a special UNM centennial cookbook project, called *Key Cuisine, A Centennial Collection*. The mother of three, Susan is a very active supporter of the University and has held numerous positions in the Albuquerque Alumnae Association.

**Geraldine Rasmussen, ΔK—**Miami, whose works have been reviewed in *The Key* (Spring 1972 and Fall 1982), continues to pursue her career in oil painting. Her recent

art shows include an exhibit held at the Ft. Lauderdale City Hall. One of the paintings shown was a portrait of Dr. Walter Russell, the "modern Leonardo," which has been donated to the University of Science and Philosophy at Waynesboro, VA.

**Norma Thomas, M—Butler,** has pursued her art career through college, private lessons, scholarships and workshops. Her drafting experience assisted in developing her perspective and attention to overall design and detail.

Although Norma has worked with oils most of her career, she now works primarily in watercolors using a light, realistic style for still lifes, landscapes, children, clowns, and animals. She is multi-talented and sometimes combines poetry and calligraphy with the original designs of her watercolors. Shows, juried exhibits, and commissions keep Norma busy, as does her membership in the Houston Alumnae Association.

**Cheryl A. (Katy) Waldeck, BX—Kentucky,** used the basement of the Kappa house for a studio



**Cheryl A. Waldeck, BX—Kentucky,** with her family. In college her studio was the Kappa house basement.



**"Goose Table,"** an example of Cheryl Waldeck's custom painted furnishings.



when she was an undergraduate art and interior design student. Now Cheryl combines the art of raising two young sons with her custom design work. Her specialty has been to match furniture with existing or planned decor. She has also designed and built some of her own furniture which she has recently begun to show. Her work has been greeted by a very favorable response.

In addition to designs created for the Tulsa Philharmonic Society's Designer Showcase house, she also has a "deal in the works" with Neiman Marcus to market copy-written originals such as her "Goose Table." Cheryl is a very active member of the Tulsa Alumnae Association, recently serving as Corresponding Secretary.

## Dance

**Lisa Jo Sagollo, FK**—William and Mary, is a choreographer, dance educator, and scholar. She presented a paper on the Broadway choreography of Agnes de Mille in June to the American Dance Guild conference at the University of the Arts, Philadelphia. Her article on the influence of modern dance on Broadway choreography will appear next year in volume two of *Dance: Current Selected Research*.

Lisa Jo has choreographed more than 60 productions for off-Broadway, regional, summer stock, and dinner theaters. She is currently an arts in education doctoral candidate at Teachers College, Columbia University and teaches dance at Columbia, the Manhattan School of Music, and the Michael Chekhov Acting Studio in New York.

## Music

**Margaret Hillis, Δ**—Indiana, 1978 Alumnae Achievement Award Winner, continues her successful career as the director of the Chicago Symphony Chorus which she founded in 1957. Recordings of Verdi's *Requiem* and Orff's *Carmina Burana* by the Chicago Symphony Orchestra (Sir Georg Solti, conductor) and Chorus represent two of the seven Grammy Awards Margaret has received.

In addition to the appointment by former President Reagan to a six-year term as an adviser to the Na-



**Margaret Hillis, Δ**—Indiana, after conducting a concert of the Chicago Symphony chorus.

tional Council on the Arts, other recent honors include "Margaret Hillis Day," proclaimed by Illinois Governor James Thompson in honor of the 30th anniversary of the Symphony Chorus.

Margaret also holds the positions of founder and music director of the American Choral Foundation and is a member of the resident conducting staff of the Civic Orchestra of Chicago.

**Michelle Latour, ΔΩ**—Calif. State, Fresno, a 1989 vocal music graduate, has entered Boston University to pursue an M.A. in vocal performance. A soprano, Michelle participated in the Metropolitan Opera's spring 1989 auditions, has travelled with the CSUF Concert Choir on its tour through Europe and the Soviet Union, and attended an Austrian three-week summer program of study in 1988.

## Photography

**Ruth Branning Molloy, BA**—Pennsylvania, received the honor of having her photograph, "Bright Offering" win an award and serve as the cover for the American Association of Retired Person's *Modern Maturity* magazine, October 1987. The AARP competition theme was,

"To serve, not to be served," which is the organization's motto.

## Stage and Screen

**Lisabeth (Mary) Bartlett, Y**—Northwestern, who played the role of Papagena in the hit movie *Amadeus*, most recently appeared in the Broadway production, *Execution of Justice*. In *Suspect*, starring Cher and Dennis Quaid, Lisabeth played opposite Phillip Bosco as his "Washington kept woman." Her first love is the stage and she continues to act in regional theaters such as the Guthrie in Minneapolis and the Pittsburgh Public. Everywhere she works she tries to establish a workshop with a local college or university to provide support and assistance to young theater students. Lisabeth and husband Roy Backes, production stage manager of the Roundabout Theater in New York City, have developed a workshop on the many technical and performance dimensions of live theater which they make available to interested institutions.



**Bonnie Black, ΓH**—Washington State

**Bonnie Black, ΓH**—Washington State, began her career as a performer in the arts at 41. Prior to her debut, she taught a unique high school elective class in Millbrae, CA, which included elements of drama, speech, and film. During her short career, Bonnie has made national and regional commercials, had a part in the pilot television show, *Las Vegas Weekly*, and has done extensive "print work." She is striving to make film work a major part of her professional life, but is also interested in representing a product or service connected to the world of women's health.



**Help KKG just by using your credit card.**

Imagine a prominent line of credit up to \$5,000, MasterCard® card acceptability, and a way to generate ongoing funds for Kappa Kappa Gamma at no cost to you. It's right here. The Kappa Kappa Gamma Silver MasterCard® card is yours free of its \$18 annual fee the first year. The annual percentage rate is a competitive 19.7%, and you will also receive a companion VISA® card.

**A MasterCard® to try without risk for one full year.**

The Kappa Kappa Gamma Silver MasterCard Program will secure for you the finest credit services: Worldwide acceptance at 6.3 million locations... 24-Hour toll-free Customer Service, 365 days a year... No finance charge option on purchases... Convenient access checks and cash advance privileges at over 150,000 locations through the card that proudly displays the Kappa Kappa Gamma identification.

# A fundraiser worth up to \$5,000 for you?



**Your travel benefits include:**

- Up to \$300,000 travel accidental death and dismemberment insurance
- Up to \$15,000 auto rental collision deductible reimbursement
- Up to \$3,000 lost luggage coverage
- Emergency cash and airline tickets
- 24-hour toll-free travelers' message service
- Lost card registration at no additional cost

**Complete the brief application and send it to:**

Kappa Kappa Gamma  
MasterCard®  
MBNA, P.O. Box 15464  
Wilmington, DE 19850

**Apply right now by calling toll-free**

## 1-800-847-7378

Be sure to use the priority code CQEJ when calling!

# YES!

I wish to apply for a Kappa Kappa Gamma Silver MasterCard account with a line of credit up to \$5,000 and all other benefits described above.† (NOTE: This is not an application for a corporate account.) (Please Print)

TYPE OF CARD(S) REQUESTED: ☐ MasterCard Only  
☐ MasterCard and VISA

NAME \_\_\_\_\_

ADDRESS \_\_\_\_\_

CITY \_\_\_\_\_ STATE \_\_\_\_\_ ZIP \_\_\_\_\_

HOME PHONE ( ) \_\_\_\_\_ BUS. PHONE ( ) \_\_\_\_\_

ARE YOU: ☐ Renting ☐ Own ☐ Buying Monthly Payment \$ \_\_\_\_\_

SOCIAL SECURITY # \_\_\_\_\_

DATE OF BIRTH \_\_\_\_\_

PRESENT EMPLOYER \_\_\_\_\_

NATURE OF BUSINESS \_\_\_\_\_

POSITION \_\_\_\_\_ YEARS THERE \_\_\_\_\_

ANNUAL SALARY \$ \_\_\_\_\_ OTHER INCOME\* \$ \_\_\_\_\_ SOURCE \_\_\_\_\_

\*(Alimony, child support, or separate maintenance income need not be revealed if you do not wish it considered as a basis of repayment.)

PREVIOUS EMPLOYER IF LESS THAN 3 YRS. \_\_\_\_\_ YEARS THERE \_\_\_\_\_

MOTHER'S MAIDEN NAME \_\_\_\_\_  
(For use when you request special action taken on your account)

Previous address if at present address less than 3 years. \_\_\_\_\_

I have read the entire application, agree to its terms, and certify the information is correct.

APPLICANT SIGNATURE \_\_\_\_\_ Date \_\_\_\_\_ (Seal)

Use this section to request extra cards. If you wish an additional card issued to a co-applicant over 18 years of age, complete the information below.

CO-APPLICANT NAME \_\_\_\_\_

RELATIONSHIP \_\_\_\_\_ SOCIAL SECURITY # \_\_\_\_\_

EMPLOYER \_\_\_\_\_ YEARS THERE \_\_\_\_\_

POSITION \_\_\_\_\_ ANNUAL SALARY \$ \_\_\_\_\_

OTHER INCOME \$ \_\_\_\_\_ WORK PHONE ( ) \_\_\_\_\_

I have read this entire application, agree to its terms, and understand that I will be jointly and severally liable for all charges on the account.

CO-APPLICANT SIGNATURE \_\_\_\_\_ Date \_\_\_\_\_ (Seal)

CREDIT CARD ACCOUNTS:

MASTERCARD®/VISA® ACCT. NO. \_\_\_\_\_

AMERICAN EXPRESS® NO. \_\_\_\_\_

I (we) authorize MBNA® to investigate any facts or obtain and exchange reports regarding this application or resulting account with credit reporting agencies and others. Upon request I (we) will be informed of each agency's name and address.

†The ANNUAL FEE for the Association Silver MasterCard account is \$18. The ANNUAL PERCENTAGE RATE is 19.7%. GRACE PERIOD: You will not be assessed a FINANCE CHARGE if you pay the New Balance Total by the Payment Due Date (25 days after the billing date). If this amount is not paid, FINANCE CHARGES accrue from the date of PURCHASE. A cash advance will bear FINANCE CHARGES from the date of transaction. OTHER CHARGES: You will be charged an overlimit fee of \$15 if your New Balance Total on your billing date is more than 15% over your credit limit. You will be charged a late fee of \$15 if you fail to make required payment within 15 days after the Payment Due Date. You will be charged a return check fee of \$15 if a check submitted as payment is returned for any reason.

This offer is not available in Delaware. MBNA® is a federally registered Service mark of Maryland Bank, N.A., a subsidiary of MNC Financial, Inc.

CQEJ 10-163 11- 163



\*The complete Fraternity directory is published once each year. Please save this section. A listing of Alumnae Reference Chairmen will be included in the Summer Issue, May 1990.

# FRATERNITY DIRECTORY

## COUNCIL

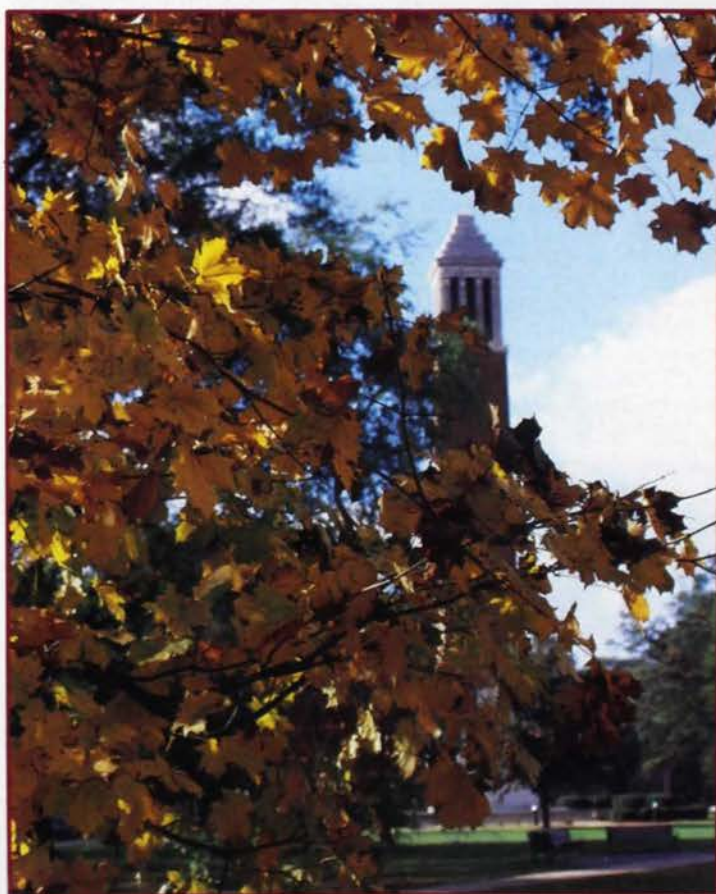
- President:** Kay Smith Larson, BII, (Durmont) P.O. Box 250, Manchester, WA 98353-0250  
**Vice-President:** Jennie Miller Helderman, III, (J. Frank) 209 Dogwood Cr., Gadsden, AL 35901  
**Treasurer:** Susannah Erck Howard, EZ, (James) 7827 Glen Echo Dr. N., Jacksonville, FL 32211  
**Director of Alumnae:** Vera Lewis Marine, ΔZ, (James) 474 Harvard Dr., Arcadia, CA 91006  
**Director of Chapters:** Patricia Coffee Gesell, ΔA, (Perry) 300 W. Rosemary, Falls Church, VA 22046  
**Director of Field Representatives:** Juliana Fraser Wales, BN, (Ross) 3581 Raymar Blvd., Cincinnati, OH 45208  
**Director of Membership:** Carol Lash Armstrong, ΔA, (Ronald) 4719 Eagles Nest Cr., Kettering, OH 45429  
**Director of Personnel:** Gail Simpson Owen, A<sup>4</sup>, (Tim) 348 S. Minnesota, Morton, IL 61550  
**Director of Philanthropies:** Wilma Winberg Johnson, ΔN, (Aldie) 22 Burlington Rd., Bedford, MA 01730

## STANDING COMMITTEES

- Bylaws:** Nan Kretschmer Boyer, BM, (John) 836 E. 17th Ave., Denver, CO 80218  
**Chapter Advisory Boards:** Mariann Wilson Lyon, BE, (David) 2714 Simondale Dr., Ft. Worth, TX 76109  
**Convention:** Marilyn Mayes Hicks, BX, (Donald) 6007 Granada Dr., Coral Gables, FL 33146  
**Extension:** Marian Klingbeil Williams, Θ, (Charles) 2821 Alcazar Dr. N.E., Albuquerque, NM 87110  
**Finance:** Carol Anna Nichols, ΔY, 3816 Gillon Ave., Dallas, TX 75205 (Chairman); Mary Donley Lacey, ΓΨ, 17329 Sandy Knoll Dr., Olney, MD 20832; Jan Harenburg Stockhoff, IB, (Cy) 6917 Rosewood N.E., Albuquerque, NM 87111; Kerrie Murray, BK, (David) 4017 Edgemont, Boise, ID 83706  
**History:** Virginia Anding La Charité, ΓK, (Raymond) 1830 Cantrill Dr., Lexington, KY 40505 (Chairman); Frances Tyrrell Gathright, BE, (Cary) 7911 S. Toledo, Tulsa, OK 74136; Lynn Jolley Letcher, II, (William) 2820 E. 81st Pl., Tulsa, OK 74137  
**Housing:** Joyce Wilson Carson, ΔX, (Robert) 6104 Kingsbridge Dr., Oklahoma City, OK 73132, (Chairman). House Directors: Dorothy Clinton Thute, Σ, (William) 1808 Pedregoso Ct. S.E., Albuquerque, NM 87123. Chapter House: Katherine Scholberg Weeks, ΔΦ, (Peter) 6107 Meadow Rd., Dallas, TX 75230. Members-at-Large: Sue Darby Gaston, ΓN, (James) 20 Armistead Rd., Little Rock, AR 72207; Jane Fields Strohecker, BK, (Frank) 862 W. Vista Dr., Camano Island, WA 98292  
**Key Publication:** Cynthia McMillan Lanford, ΓII, (William) 3403 Firethorn Dr., Tuscaloosa, AL 35405 (Editor); J. Dale Brubeck, ΓK, (Business Manager); Lois Catherman Heenehan, BE, (Paul) P.O. Box 292, Mifflinburg, PA 17844 (Associate Editor); Susan Frech Schmitt, EH, (Herb) 540 Mt. Washington Ln., Alpharetta, GA 30201 (Advertising Manager); CiCi Williamson, ΓΨ, (Jon) Marina Towers #522, 501 Slater's Lane, Alexandria, VA 22314 (Alumnae Activities Editor); Chari Beaudry, BII, 5102 241st SW, Mountlake Terrace, WA 98043 (Arts Editor)  
**Publications:** Gay Chuba Barry, ΔA, (John) Rt. 1 Box 87 W., Newfoundland, PA 18445  
**Ritual:** Jean Hess Wells, ΔY, (Robert) 4830 Jett Rd. N.W., Atlanta, GA 30327

## FRATERNITY HEADQUARTERS

- 530 E. Town St., Columbus, OH 43216 (P.O. Box 2079)  
 (614-228-6515)  
 Fax No: (614-228-7809)  
**Office Hours:** 8:30-5:00 (Eastern Time)  
**Executive Director:** J. Dale Brubeck, ΓK  
**Chapter Finance Supervisor:** Marcel Tommas App, (Douglas)  
**Communication:** Diana Texter Callahan, BM, (William); Deborah Dye Coleman, BN, (Paul); Linda Atkins Lange, BP<sup>3</sup>, (C. Thomas)  
**Convention Consultant:** Marjorie Kidd Meade, P<sup>4</sup>, (William)  
**Development Office Coordinator:** Jane Ketcham Steiner, ΔA, (Scott)  
**Financial Administrator:** Sandra Bennett  
**Fraternity Meeting Planner:** Heidi Moorma Bowman, ZK, (Michael)  
**Magazine Agency:** Ann Green Mahle, ΔN, (Thomas)  
**Registrar:** Terry R. Rogers, (Raymond)  
**Assistants:** Nancy Delor Bringardner, BN, (David); Elizabeth Davis, ΓP; Marci Harenburg, (James); Rogenia Hartgrove, (David); Theresa Holtz; Marcia Jones; Carol Bringardner Klunk, BN, (James); Susie Schwartz Saeger, BN (John); Diana Schlairet, (Greg); Chitphasong Sithixay, (Somkiat); Christine Brayer Tracy, ZK, (John); Joseph Veneman





## ASSOCIATE COUNCIL

### PROVINCE DIRECTORS OF ALUMNAE

- Alpha:** Judith Lennon Cashman, BB<sup>Δ</sup>, (Vincent) 120 Oxford Blvd., Garden City, NY 11530
- Beta East:** Beth Sharp Webber, ΔA, (Houston) 8 Aubrey Rd., Upper Montclair, NJ 07043
- Beta West:** Marcia Windness Coward, H, (Charles) 306 Collins Ave., Morrestown, NJ 07057
- Gamma:** Deborah Heaberlin Smith, BO, (Hudson) 15473 Wenhaven Dr., Chagrin Falls, OH 44022
- Delta North:** Bonnie Small Gold, ΓΔ, (William) 2105 Mapleleaf Dr., Midland, MI 48640
- Delta South:** Martha Spurgeon Fisher, ΓΔ, (Hugh) 452 E. Armstrong St., Frankfort, IN 46041
- Epsilon North:** Karen Hager Martin, E, (John) 309 Pond Ridge Lane, Urbana, IL 61801
- Epsilon South:** Kathryn Alexander, A<sup>Δ</sup>, 1514 W. Green, Champaign, IL 61821
- Zeta:** Marilyn Nichols Bullock, ΓA, (Paul) 219 Fordham Rd., Manhattan, KS 66502
- Eta:** Tschudy Griffith Schmidt, EB, (John) 1601 Cottonwood Pt. Dr., Ft. Collins, CO 80524
- Theta East:** Shirley Swan Jordan, ΔΠ, (James) 10926 Piping Rock, Houston, TX 77042
- Theta West:** Marilyn Bosse Whiteside, Δ, (Wilson) 6541 Ivyglen, Dallas, TX 75240
- Iota:** Sally Lokken Hoppe, ΓH, (James) 4718 E. 50th, Spokane, WA 99223
- Kappa North:** Catherine Smith, BΔ, 3535/120 Linda Vista Dr., Vista, CA 92083
- Kappa South:** Ann Johnson Butler, ΓZ, (A. Bates) 2702 E. 4th St., Tucson, AZ 85716
- Lambda East:** Betty Hines Bloore, ΔP, (John) 1007 Valewood Rd., Towson, MD 21204
- Lambda West:** TBA
- Mu North:** Karen Andersen Gregorio, EΔ, (Michael) 2295 Roxburgh Dr., Roswell, GA 30076
- Mu South:** Karen Stevens Pinkney, ΔY, (Edgar) 4305 Randon Ln., Merritt Island, FL 32952
- Nu East:** Gerry Mills Schaffer, ΔT, (Virgil) 1706 Willowbrook Dr., Huntsville, AL 35802
- Nu West:** Sandra Ramsey Barksdale, ΔΣ, (William) 1437 Yorkshire, Memphis, TN 38119
- Xi:** Anne Apperson Nunnelee, ΔΠ, (Ed) 2504 E. 46th Pl., Tulsa, OK 74105
- Omicron:** Sally Kiehne Kelby, X, (George) 6167 Chasewood Pkwy. #201, Minnetonka, MN 55343
- Pi:** Sue McGinty Riches, ΓM, (Michael) 5231 S.E. McLoughlin, Portland, OR 97202
- Rho:** Connie Adler Engel, ΔA, (George) 68 Burning Tree, Greenwich, CT 06830
- International:** Dell Chenoweth Stifel, BP<sup>Δ</sup>, (Larry) AMEG, c/o Jim Dehner, 11511 Katy Freeway, Suite 300, Houston, TX 77079

### PROVINCE DIRECTORS OF CHAPTERS

- Alpha North:** Alyson Conner Deans, BΨ, (Alan) 5 Tournament Dr. Willowdale, ON, Canada M2P 1K1
- Alpha South:** Suzanne House Giffen, ΓP, (Terence) P.O. Box 788 333 Christen St., Wallingford, CT 06492
- Beta East:** Maureen Kelly McLaughlin, ZB, (Michael) 48 Commonwealth Dr., Basking Ridge, NJ 07920
- Beta West:** Kathleen Zornan Caliendo, ΓE, (Mark) 2025 Swallow Hill Rd., Pittsburgh, PA 15220
- Gamma North:** Sheila Cloyes Maxwell, BM, (Douglas) 2636 Royalwoods Ct., Cincinnati, OH 45244
- Gamma South:** Beth Bishoff Kemmerer, BN, (Todd) 2428 Arlington Ave., Columbus, OH 43221
- Delta North:** Clara Dowling Noble, ΔΓ, (Russell) 1728 Maybrook Rd., Jackson, MI 49203
- Delta South:** Allison Gliemi Cath, Y, (Thomas) 426 Anderson St., Greencastle, IN 46135
- Epsilon North:** Polly Gamble Larned, BΔ, (William) 721 Greenwood Ave., Wilmette, IL 60091
- Epsilon South:** Robin Cohenour Leonard, E, (James) 37 Golf Dr., Mahomet, IL 61853
- Zeta East:** Martha Deetz Behnen, E, (David) 15 Far Oaks, St. Louis, MO 63124
- Zeta West:** Carol Klecan Clark, ΓA, (David) 9105 Buena Vista, Shawnee Mission, KS 66207
- Eta East:** Karla Wilkinson Bramer, ΓB, (Brad) 2611 Vista Larga, NE, Albuquerque, NM 87106
- Eta West:** Carol Wheat, ΔH, 525 2nd Ave., #1, Salt Lake City, UT 84103
- Theta East:** Zoe Stevens Harrell, ΔI, (J. Cooper) 5550 Berkshire, Baton Rouge, LA 70806
- Theta West:** Jan Rogers Raulston, ΓΦ, (Doak) 5 Thornhill, Fort Worth, TX 76132
- Iota East:** Elizabeth Forrester Gleason, ΔP, 138 River Pines Rd., Missoula, MT 59801
- Iota West:** Barbara Ware Featherstone, BK, (Wray) 13330 N.E. 61st St., Kirkland, WA 98033
- Kappa North:** Janna Lory Cross, ΓΘ, (Donald) 4730 E. Arcadia Ln., Phoenix, AZ 85018
- Kappa South:** Kim Braun Padulo, EΠ, (Lawrence) 6282 Caminito del Oeste, San Diego, CA 92111
- Lambda East:** Suzanne Morgan, BY, 505 N. Howard St. #203, Alexandria, VA 22304
- Lambda West:** Anne McNally Anthony, EK, (Gary) 1403 Kahoe Rd., Forest Hills, MD 21050
- Mu North:** Frances Davis Roberts, ΔY, (Stephen) 4523 Club Cir., N.E., Atlanta, GA 30319
- Mu South:** Ann Sappenfield Mills, ΓK, (Leonard) 10800 McCulloch Rd., Orlando, FL 32817
- Nu North:** Valerie Gayden Holman, ΓΠ, (George) 124 C Memory Court, Birmingham, AL 35213
- Nu South:** Alexa Stanley Robinson, ΔΣ, (Porter) 457 Robin Rd., Grenada, MS 38901
- Xi:** Jane Young Barrett, BΘ, (David) 1107 Whispering Pines, Norman, OK 73072
- Omicron:** Valerie Renner, Δ, (Michael) 412 N. Northpoint Dr., Peoria, IL 61614
- Pi North:** Joanne Pennington Kelly, IT, (Paul) 1701 Portland, Berkeley, CA 94707
- Pi South:** Sharon Garmo Poulsen, ΓH, (Boyd) 153 Hemlock Ct., Palo Alto, CA 94306
- Rho North:** Kitty Butts Pattison, BY, (Fred) 34 Aurora Dr., Cumberland, RI 02864
- Rho South:** Peggy Hanna Hellwig, EA, (G. Vincent) 66 Fernwood Dr., Simsbury, CT 06070

### SPECIAL APPOINTMENTS:

- Assistant to Council:** Erica Proctor, ZA, c/o IBM Corp., 103 Wigmore St., London, England W1H 0AB
- Assistant to President:** Jean Schmidt, ΔA, 310 W. 107th St., New York, NY 10025
- CHOICES:** Lynn Latham Chaney, ΔI, (Kermit) 9918 W. 65th Dr., Merriam, KS 66203
- Development:** Eloise Moore Netherton, BΞ, (H.W.) 3933 Balcones Dr., Austin, TX 78731



Former Alpha Province Officer partners are working together again in new Kappa jobs. Pictured at Associate Council Seminar, from left—Cathy Thompson Carswell, E—Illinois Wesleyan, Regional Director of Chapters for Alpha and Rho Provinces with former PDA, Alyson Conner Deans, BΨ—Toronto, now Alpha PDC.



**Adelphi Chairman:** Rebecca Stone Arbour, ΔI, (Robert) 1220 Ross Ave., Baton Rouge, LA 70808  
**Long-Range Planning:** Marjorie Cross Bird, BM, 601 Warren Land- ing, Ft. Collins, CO 80525  
**Leadership and Program Development:** Sally Moore Nitschke, BN, (Charles) 6570 Plesenton Dr., Worthington, OH 43085  
**Parliamentarian:** Carrie Mae Blount, 7712 Pickard N.E., Albu- querque, NM 87110

## CHAPTER ASSISTANCE:

**Chapter Programs Coordinator:** Ann Stafford Truesdell, P<sup>a</sup>, (Thomas) 4718 Oxford Rd., Macon, GA 31210  
**Regional Directors of Chapters:**  
**Alpha and Rho Provinces:** Cathy Thompson Carswell, E, (Bruce) 16 Highland Way, Scarsdale, NY 10583  
**Beta and Gamma Provinces:** Mary Sterner Giordano, Θ, (Paul) 274 Marlborough #8, Boston, MA 02116  
**Delta, Epsilon, and Zeta Provinces:** Cathie Bernotas Gelhaar, E, (James) 9 S. William, Mt. Prospect, IL 60056  
**Omicron, Eta, and Iota Provinces:** Patsy Bredwick Leyang, ΓT, (Gary) Rt. 3 Box 56, Keene, ND 58847  
**Theta, Nu, and Xi Provinces:** Katherine Scholberg Weeks, ΔΦ, (Peter) 6107 Meadow Rd., Dallas, TX 75230  
**Lambda and Mu Provinces:** Betsy Stillwell Strain, Σ, (Bill) 3630 E. 76th St., Lincoln, NE 68506  
**Kappa and Pi Provinces:** Mary Lou Gardiner, Θ, (Eugene) 931 W. 33rd St., Spokane, WA 99203

**Assistants to the Director of Membership:** Joan Cook Cohen, BM, (Steven) 2169 E. Floyd Pl., Englewood, CO 80110; Helen Kutscha Gyllstrom, Y, (Thomas) 8602 SW 5th Pl., Gainesville, FL 32607  
**Assistant to the Director of Personnel:** Kimberly Schlundt, ΔA, 2093-I Lake Park Dr., Smyrna, GA 30080  
**Assistant to the Director of Philanthropies for Chapter Philan- thropy Programs:** Barbara Rossiter Huhn, P<sup>a</sup>, (David) 810 Dutch Mill Rd., Manchester, MO 63011

## Field Representatives:

### Chapter Consultants

Teresa Cox, ΓB to ZΣ, P.O. Box 7599, Univ. of N. Texas, Denton, TX 76203  
 Therese Guiney, BY to ΔN, 32 Nutting Ave., Amherst, MA 01002  
 Heather Hartmann, ΔN to ZY, P.O. Box 2007, Statesboro, GA 30458  
 Ann Marie Higham, Θ to ΔY, 400 S. Milledge Ave., Athens, GA 30609  
 Lisa Morris, ΓP to ZP, 38 Broad St., Hamilton, NY 13346  
 Christine Nelson, EE to BP<sup>a</sup>, 2801 Clifton Ave., Cincinnati, OH 45220  
 Marnie O'Brien, ΓΩ to ZT, P.O. Box 5465, Lexington, VA 24450  
 Marion Riley, ΔN to ZII, 1901 Cleveland Blvd., Caldwell, ID 83605  
 Barbara Sterner, Θ to O<sup>a</sup>, Simpson College, 701 North C, Indianola, IA 50125

### Traveling Consultants

Linda Finnegan, ΓH, E. 930 20th Ave., Spokane, WA 99203  
 Sheri Gosliner, ΓΞ, 50 Terra Linda Dr., San Rafael, CA 94903  
 Laura Hedges, Ω, 2380 Northwood Ln., Salina, KS 67401  
 Linda Hoffman, ΓB, 9108 James Ave. N.E., Albuquerque, NM 87111  
 Amy Mendenhall, EM, 6047 Brokenhurst Rd., Indianapolis, IN 46220  
 Denise Rugani, EO, 1701 Pepperwood, Concord, CA 94521

## Coordinators of Chapter Development

Karen Bosch, X to X, 3101 Colorado Ave. S., St. Louis Park, MN 55416  
 Martha Galleher Cox, P<sup>a</sup> to O<sup>a</sup>, (L.E.) 6210 Morningside Dr., Kansas City, MO 64113  
 Susan Darby Gaston, ΓN to ZΣ, (James) 20 Armistead Rd., Little Rock, AR 72207  
 Ingrid Mikk, ΔΔ to ZP, 1125 Goler House 60 Crittenden Blvd., Rochester, NY 14620  
 Mimi Stein Morton, Y to ZO, (James) 8 Allwood Ct., Greensboro, NC 27410  
 Lee Thomas Mullen, EΣ to ZT, (Joseph) Glentivar, Rt. 1 Box 215, Greenwood, VA 22943  
 Martha Hay Streibig, Δ to ZY, (Michael) 20797 Cipres Way, Boca Raton, FL 33433  
 Jane Fields Strohecker, BK to ZII, (Franklin) 862 W. Vista Dr., Ca- mano Island, WA 98292

## ALUMNAE ASSISTANCE:

**Assistants to the Director of Alumnae:** Frances Tyrrell Gathright, BΞ, (Cary) 7911 S. Toledo, Tulsa, OK 74136 (Programs); Gene Gris- wold Omundson, Y, (Roy) P.O. Box 1031, Quechee, VT 05059 (Ex- tension)  
**Assistants to the Director of Membership:** Joan Cook Cohen, BM, (Steven) 2169 E. Floyd Pl. Englewood, CO 80110; Helen Kutscha Gyllstrom, Y, (Thomas) 8602 S.W. 5th Pl., Gainesville, FL 32607  
**Assistant to the Director of Philanthropies:** Bev Estabrook Essel, ΔA, (Robert) 14975 Highland Trl., Minnetonka, MN 55345

## HERITAGE MUSEUM

**530 E. Town St., Columbus, OH 43216 (P.O. Box 2079)**  
**Chairman of Museum Board:** Patricia Piller Shelton, Ω, (John) 6536 Sagamore Rd., Shawnee Mission, KS 66208  
**Board of Trustees Members:** Martha Hodson Erwin, BΞ, (James) 3825 Chevy Chase, Houston, TX 77019; Barna Hurt Graves, ΓN, (Malcolm) 4551 Lanercost Way, Columbus, OH 43220; Virginia Anding La Charité, ΓK, (Raymond) 1830 Cantrill Dr., Lexington, KY 40505; Deborah Wamser Miller, ΓΞ, 1616 Harper Ave., Redon- do Beach, CA 90278; Beverly Alexander Tuller, ΓX, (Robert) 2651 Pierce St., San Francisco, CA 94123; Suzanne Wilbert Turner, ΔI, (Bert) 741 Delgado Dr., Baton Rouge, LA 70808; Frances Winter Utey, ΓII, (George) 129 S. High St., Lancaster, OH 43130; Execu- tive Director; Fraternity Treasurer; Fraternity Vice President; Fra- ternity President

## PANHELLENIC

**National Panhellenic Conference Delegate:** Phyllis Brinton Pryor, BM, (Wilbur) 1975 Monaco Pkwy., Denver, CO 80220;  
**Alternates:** Marian Klingbeil Williams, Θ, (Charles) 2821 Alcazar NE, Albuquerque, NM 87110; Marjorie Matson Converse, ΓΔ, (Wiles) 83 Stoneleigh Ct., Rochester, NY 14618; Jean Hess Wells, ΔY, (Robert) 4830 Jett Rd. NW, Atlanta, GA 30327  
**Panhellenic Affairs Committee:** NPC Delegate (Chairman); Cam- pus Panhellenic: Adlon Dohme Jorgensen, BA, (Richard) 1013 Hadley Dr., Champaign, IL 61820; Alumnae Panhellenic: Nancy Voorhees Laitner, ΓΔ, (Edward) 46 Warrington Dr., Lake Bluff, IL 60044

## PHILANTHROPIES:

**Chapter Consultant Scholarships:** Director of Field Representa- tives...Deadline for applications, Nov. 15  
**Graduate Fellowships:** Eunice Scott Siverson, P<sup>a</sup>, (G.C.) 3710 Gren- noch Ln., Houston, TX 77025, Chairman; Judges: Janice Lewellyn Quick, M, (William) 606 Sunburst Ln., Middlebury, IN 46540; Sarah Ryder, A<sup>a</sup>, Echo Ln., Wheeling, WV 26003; Sheila Stanley, ΔΣ, (C.W.) 3301 Ridge Oak Dr., Garland, TX 75042; Cynthia Springer Harbold, M, (F.E.) 6632 Sweetwood Ct., Ft. Wayne, IN 46804...Deadline for applications, Feb. 15  
**Undergraduate Scholarships:** Suzanne Peterson Fream, BT, (David) 5 Dorothy Ct., Middletown, NJ 07748 (Chairman); Judges: Adeline Holmes Lubkert, ΔΘ, (Harry) 34 Crawfords Corner, Holmdel, NJ 07733; Marilyn Flynn Donlan, BZ, 51 Ivy Rd., Welles- ley, MA 02181...Deadline for applications, Feb. 15  
**Undergraduate Emergency Scholarships:** Deborah Wehle Ander- son, EH, (Stephen) P.O. Box 21263, Tampa, FL 33622  
**Rehabilitation Fellowships, Scholarships, and Service:** Cath- erine Axline Williams, A<sup>a</sup>, (Lawrence) 4720 Pickett Rd., Fairfax, VA 22032 (Chairman); Judges: Sandra Benzie Levine, H, (Robert) 1350 N. Lakeshore Dr., Chicago, IL 60610; Judith Latta, BΘ, 3900 Watson Pl. N.W., Washington, D.C. 20016; Carolyn Hornor Wilson, BY, (Rodney) 903 Green Countrie Dr., Deerfield Greene, W. Chester, PA 19380; Pat Burrows Vadopalas, BΩ, (Paul) 829 Northampton Dr., Palo Alto, CA 94303...Deadline for applications, Feb. 15  
**Rose McGill:** Barbara Cranston Granat, ΔΓ, (William) 654 Vassar Rd., Wayne, PA 19087 (Chairman); Marilyn Hall Falls, K, (Robert) 41 Hillside Rd., Strafford, PA 19087 (Assistant); Bev Estabrook Essel, ΔA, (Robert) 14975 Highland Trl., Minnetonka, MN 55345 (Circle Key Grants); Ann Wallace White, Δ, 7405 Fredrick Dr. E., Indianapolis, IN 46260 (Christmas Sharing Program)  
**Student Loan Fund:** Libby Tucker Gessley, ΔZ, (Donald) 11608 W. 99th Pl., Overland Park, KS 66214  
**Magazine Agency:** Ann Green Mahle, ΔN, (Thomas) P.O. Box 177, Columbus, OH 43216 Tel#1-800-KKG-ROSE



# 1989-1990 ACTIVE CHAPTER PRESIDENTS & CHAPTER COUNCIL ADVISERS

(\*Chapter Mailing Address) Listed alphabetically by name of school

**Akron, U. of** - A (Γ North) - Jennifer Bolanz, \*237 Spicer St., Akron, OH 44304; Sarah Nichols Ackerman, ΔΓ, (Craig) 7701 Holyoke Ave., Hudson, OH 44236

**Alabama, U. of** - ΠΠ (N South) - Trent Caddis, \*P.O. Box 6569, 905 Colonial Dr., Tuscaloosa, AL 35486; Kathy Alexander Harris, ΕΓ, (Jack) 21 Pinehurst, Tuscaloosa, AL 35401

**Allegheny C.** - ΓP (B West) - Heather Aley, \*Allegheny Coll., Meadville, PA 16335; Joan Henry Castelli, ΓP, (Peter) RD 1 Box 494, Conneaut Lake, PA 16316

**Arizona State U.** - ΕΔ (K South) - April Moore, \*Palo Verde Main, Tempe, AZ 85281; Patricia Zimmerman Packard, ΕΔ, (Peter) 8924 N. 65th St., Paradise Valley, AZ 85253

**Arizona, U. of** - ΓZ (K South) - Giselle Chan, \*1435 E. 2nd St., Tucson, AZ 85719; Margaret Burton Polson, ΓZ, (William) 2822 N. Santa Marta Pl., Tucson, AZ 85715

**Arkansas, U. of** - ΓN (Xi) - Carolyn Ridenour, \*800 W. Maple, Fayetteville, AR 72701; Elizabeth Johnson Bradford, ΓN, (Edward) 1492 Sunset Pl., Fayetteville, AR 72701

**Auburn U.** - EH (N South) - Amy Adams, \*Dorm K, Auburn University, AL 36830; Teresa Poor Weaver, EH, (George) 310 N. 9th St., Opelika, AL 36801

**Babson C.** - ZA (P North) - Karen D'Alessandro, \*Box 2621, Babson Park, MA 02157; Lisa Temple, ΓX, 58 Selkirk Rd. #12, Brookline, MA 02146

**Baylor U.** - EY (Θ East) - Paige Trimmer, \*B.U. Box 5617, Baylor University, Waco, TX 76703; Jan Jaynes Granowski, ΕΓ, (Scott) 600 University Park Dr. #1013, Waco, TX 76706

**Bowling Green State U.** - ZK (Γ North) - Lynne Dressel, \*Kappa Kappa Gamma, Bowling Green University, Bowling Green, OH 43403; Barbara Price, P<sup>a</sup>, 2157 Evansdale, Toledo, OH 43613

**British Columbia, U. of** - ΓY (I West) - Sue Ann Mitchell, \*%CCA; Ann-Marie Carter Copping, ΓΘ, (Allan) 1086 16th Ave., Vancouver, BC CAN V6H 1S6

**Bucknell U.** - ΔΦ (B East) - Rika Schmitt, \*Box C-2919, Bucknell University, Lewisburg, PA 17837; Lois Catherman Heenehan, BΣ, (Paul) P.O. Box 292, Mifflinburg, PA 17844

**Butler U.** - M (Δ South) - Becky Crofts, \*821 W. Hampton Dr., Indianapolis, IN 46208; Jennifer Pennington McRoberts, M, (Tim) 14350 Oakridge Rd., Carmel, IN 46032

**California State U., Fresno** - ΔΩ (Π South) - Suzie Cole, \*5347 N. Millbrook, Fresno, CA 93710; Jana Lopez Lim, ΔΩ, (Richard) 3066 E. Tenaya, Fresno, CA 93710

**California State U. Northridge** - ΕΕ (K North) - Michelle Gerevas, \*8932 Darby Ave., Northridge, CA 91325; Dana Breaugh Reed, EX, (Randy) 7427 Newcastle, Reseda, CA 91335

**California, U. of, Berkeley** - Π<sup>a</sup> (Π South) - Courtney O'Callaghan, \*2328 Piedmont Ave., Berkley, CA 94704; Linda Jones Morrison, ΔΣ, (Richard) 1414 Eagle Point Ct., Lafayette, CA 94549

**California, U. of, Davis** - ΕΟ (Π North) - Traci Fernandes, \*311 Russell Blvd, Davis, CA 95616; Kim Rountree Lien, ΓX, (Tim) 2931 Country Club Cr., El Macero, CA 95618

**California, U. of, Irvine** - ZH (K South) - Barbara Lynch, \*P.O. Box 4827, Irvine, CA 92716; Betty Fiddes Brady, M, (Howard) 2217 Vista Dorado, Newport Beach, CA 92660

**California U. of, Los Angeles** - ΓΕ (K North) - Jennifer Kashian, \*744 Hilgard Ave., Los Angeles, CA 90024; Andrea Korkos Boerger, ΓΕ, (Carl) 1411 Weymouth Ave., San Pedro, CA 90732



Bucknell U.; Academic Quad (ΔΦ)

**California, U. of, Riverside** - ΕΠ (K North) - Meredith Hutcheson, \*3637 Canyon Crest Dr. #S105, Riverside, CA 92507; Sharon Ott Star, ΔΣ, 12149 Calle Sombra #193, Moreno Valley, CA 92388

**California, U. of, San Diego** - ZN (K South) - Courtney Barnes, \*3947 Camino Lindo, San Diego, CA 92122; Mary Bahr Schram, ΓY, (Neal) 7563 Miramar Ave., La Jolla, CA 92037

**California, U. of, Santa Barbara** - ΕΨ (K North) - Laura Thile, \*6525 Picasso, Goleta, CA 93117; Pamela Hutton Brooks, ΔΨ, (Robert) 1030 Veronica Springs Rd., Santa Barbara, CA 95105

**Carnegie-Mellon U.** - ΔΕ (B West) - Cheryl Wehrer, \*Box 966, 5115 Margaret Morrison St., Pittsburgh, PA 15213; Shelley Carpenter Dawson, ΕΓ, (William) 705 Amberson Ave., Pittsburgh, PA 15232

**Centre C.** - ZΓ (N North) - Martha Lowery, \*Box 814, Centre College, Danville, KY 40422; Adana

Keller, ZΓ, 451 Westwood Trl. #A6, Frankfort, KY 40601

**Cincinnati, U. of** - BP<sup>a</sup> (Γ South) - Cady Short, \*2801 Clifton Ave., Cincinnati, OH 45221; Gail Fegela Waham, BP<sup>a</sup>, (William) 7027 Glenellyn, Cincinnati, OH 45236

**Clemson U.** - EM (M North) - Missy Schwartz, \*P.O. Box 3852, University Station, Clemson, SC 29632; Barbara Dieglio Torr, EM, (Ken) 8 Quail Dr., Salem, SC 29676

**Colorado C.** - ΔZ (H East) - Angela Paige West, \*1160 N. Cascade, Colorado Springs, CO 80903; Barbara Thomson Hess, EB, (George) 4960 Newstead Pl., Colorado Springs, CO 80906

**Colorado State U.** - EB (H East) - Stacy Vick, \*729 S. Shields, Ft. Collins, CO 80521; Sharon Durfee, ΓO, 906 Vanderbilt Crt., Ft. Collins, CO 80525

**Colorado, U. of** - BM (H East) - Melissa Shin, \*1134 University Ave., Boulder, CO 80302; Jennifer Wright, EO, 2103 Grove Cr. W., Boulder, CO 80302

**Connecticut, U. of** - ΔM (P South) - Lisa Ruggiero, \*13-15 Gilbert Rd., Storrs, CT 06268; Orinda Lewis Taylor, ΔM, (David) 125 Cambridge Dr., E. Hartford, CT 06118

**Cornell U.** - Ψ<sup>a</sup> (A South) - Kay Ganshaw, \*508 Thurston Ave., Ithaca, NY 14850; Debra Yelverton Stokes, Ψ<sup>a</sup>, (Wayne) 109 Judd Falls Rd., Ithaca, NY 14850

**Dartmouth C.** - EX (P North) - Teke Dillender, \*HB 5060, Dartmouth College, Hanover, NH 03755; Patty Ames Brown, ΔA, (Alan) 14 One Stack Dr., Concord, NH 03301

**Denison U.** - ΓΩ (Γ South) - Rebecca Stevenson, \*110 N. Mulberry St., Granville, OH 43203; Jennifer Robinson, ΓΔ, 5102 Winterburg Way, Westerville, OH 43081

**De Pauw U.** - I (Δ South) - Erika Greenawald, \*507 S. Locust Ave., Greencastle, IN 46135; Allison Gliemi Cath, Θ, (Thomas) 426 Anderson, Greencastle, IN 46135

**Dickinson C.** - ΕΩ (B East) - Allison Klein, \*HUB 1352 Dickinson College, Carlisle, PA, 17013; Sally Rolston Goas, ΔA, (Thomas) 48 Center Dr., Camp Hill, PA 17011

**Drake U.** - ΓΘ (O) - Kristin Hileman, \*1305 34th St., Des Moines, IA 50311; Mary Canady Laughlin, ΓΘ, (Michael) 2921 Eula Dr., Des Moines, IA 50322

**Duke U.** - ΔB (A West) - Katherine Blaydes, \*P.O.



U. of Michigan Stadium; a typical fall Saturday. (BΔ)



Box 5024-Duke Station, Durham, NC 27706; Eileen Kupko, ΔA, 7629 Trowbridge Ct., Raleigh, NC 7612

**Emory U.** - EE (M North) - Cathy Lassiter, \*1319 Clifton Rd., KKG Lodge, Atlanta, GA 30322; Elizabeth Bailey, ΔΠ, 1336 Christmas Ln. NE, Atlanta, GA 30329

**Florida State U.** - EZ (M South) - Wendy Doss, 528 W. Jefferson St., Tallahassee, FL 32301; Michelle Mewborn, EM, 2290 E. Park Ave., Tallahassee, FL 32301

**Florida, U. of** - EΦ (M South) - Jennifer Herndon, 401 SW 13th St., Gainesville, FL 32609; Helen Kutscha Gyllstrom, Θ, (Thomas) 8602 SW 5th Pl., Gainesville, FL 32607

**George Washington U.** - ΓX (A East) - Deanna Thielen, \*2031 F St. N.W. #302, Washington, D.C., 20006; Joan Criswell Zanfagna, ΔΦ, (Phillip) 7219 Hyde Rd., Falls Church, VA 22403

**Georgia, U. of** - ΔY (M North) - Susan Pipkin, 440 S. Milledge Ave., Athens, GA 30605; Elizabeth Ann Johnson, ΓΠ, 147 Laurie Dr., Athens, GA 30605

**Hillsdale C.** - K (Δ North) - Betsy Byrne, \*221 Hillsdale St., Hillsdale, MI 49242; Louise VanAken Worms, K, 80 E. Fayette St., Hillsdale, MI 49242

**Idaho, C. of** - ZΠ (I East) - Samantha Brakefield, \*1901 Cleveland Blvd., Caldwell, ID 83605; Shelley Savage Hamby, BK, (Mike) 23686 Market Rd., Parma, ID 83660

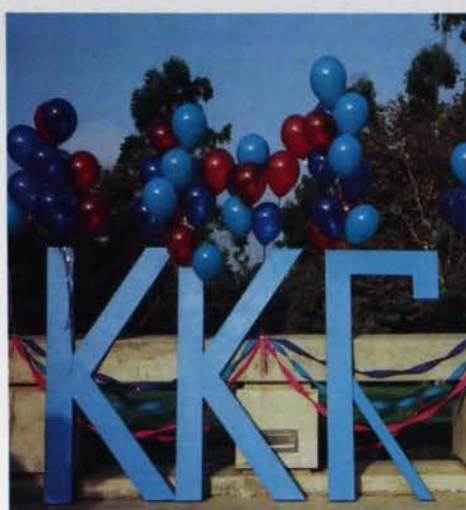
**Idaho, U. of** - BK (I East) - Jennifer Pappas, \*805 Elm St., Moscow, ID 83843; Polly Ambrose Peterson, 1112 S. Hill Terr. #4, Moscow, ID 83843

**Illinois, U. of** - BA (E South) - Debra Andrews, \*1102 S. Lincoln Ave., Urbana, IL 61801; Susie Jorgensen Fitzgerald, BA, (Paul) 1904 Karen Ct. #3, Champaign, IL 61821

**Illinois Wesleyan U.** - E (E South) - Heidi Hays, \*105 E. Graham, Bloomington, IL 61701; Julie Boyd Bach, P, (William) 203 Fleetwood Dr., Bloomington, IL 61701



BK—Idaho; raking fall leaves.



ZH—Calif.—Irvine

**Indiana U.** - Δ (Δ South) - Jennifer Winters, \*1018 E. 3rd St., Bloomington, IN 47401; Carol Connor Franklin, Δ, 2001 Arden Rd., Bloomington, IN 47401

**Iowa State U.** - ΔO (O) - D'Lee Dreyer, \*120 Lynn Ave., Ames, IA 50010; Judy Hopkins Huebsch, BZ, (Scott) RR4, Hickory Hills, Ames, IA 50010

**Iowa, U. of** - BZ (O) - Jennifer Dustin, \*728 E. Washington, Iowa City, IA 52240; Suzanne House Giffen, ΓΠ, (Terence) 431 Memorial Dr. S.E., Cedar Rapids, IA 52403

**Kansas, U. of** - Ω (Z West) - Anna Osborne, \*1 Gower Pl., Lawrence, KS 66044; Maryetta McDuffie, ΔY, 2527 Harvard, Lawrence, KS 66044

**Kansas State U.** - ΓA (Z West) - Lisa Harms, \*517 Fairchild Terr., Manhattan, KS 66502; Sue Bullock Garver, ΓA, (Dan) 2213 Todd Rd., Manhattan, KS 66502

**Kentucky, U. of** - BX (N North) - Laura Murdock, \*238 E. Maxwell St., Lexington, KY 40508; Gail Marshall Bass, BX, (Dick) 1024 Moylan Ln., Lexington, KY 40514

**Lafayette C.** - ZB (B East) - Bridgette Dahl, \*623 Parsons St., Easton, PA 18042; Ellen Watson Wolff, EΠ, (David) 5 Bennington Ct., Easton, PA 18042

**Lawrence U.** - ZE (E North) - Hilary Staak \*108 Colman 307 E. Lawrence St., Appleton, WI 54911; Cindy Zimmerman, ZE, 2306 Walden 12, Appleton, WI 54911

**Louisiana State U.** - ΔI (Θ East) - Suzette Kuhlrow, P.O. Box 17380A 4050 University Lakeshore Dr., Baton Rouge, LA 70893; Betty Kincaid Carpenter, ΔI, (Robert) 3201 Fairway Dr., Baton Rouge, LA 70809

**Maryland, U. of** - ΓΨ (A East) - Anne-Marie Cullen, \*7407 Princeton Ave., College Park, MD 20740; Megan McHugh, ΓΨ, 7718 Goodfellow Way, Derwood, MD 20755

**Massachusetts, U. of** - ΔN (P North) - Gayle Hansen, \*32 Nutting Ave., Amherst, MA 01002; Elaine Chomyn Barker, ΔN, (Alan) 41 TeaWaddle Rd., Leverett, MA 01054

**McGill U.** - ΔΔ (A North) - Lori Henderson, \*532 Milton St., Montreal, QU H2X 1W4 Can; No replacement for CCA

**Miami U.** - ΔA (Γ South) - Holly Fuller, \*100 Hamilton Hall, Oxford, OH 45056; JoAnn Renicker, BN, 5919 MacDuff Dr., Apt. 1904, Dayton, OH 45426

**Miami, U. of** - ΔK (M South) - Christine Merget, \*P.O. Box 248106 Bldg 21-H, Coral Gables, FL 33146; Kimberly Tomeo, ΔK, 7130 SW 55th Terr., Miami, FL 33155

**Michigan State U.** - ΔΓ (Δ North) - Lisa Mayer, \*605 M.A.C. Blvd, E. Lansing, MI 48823; Sharon Cutler Martin, EΘ, (Van) 6241 Island Lake Dr., E. Lansing, MI 48823

**Michigan, U. of** - BΔ (Δ North) - Lisa Wasmuth, \*1204 Hill St., Ann Arbor, MI 48104; Rebecca McCue Vest, BΘ, (Charles) 910 Kuebler Dr., Ann Arbor, MI 48103

**Minnesota, U. of** - X (O) - Faye Kjelden, \*329 10th Ave., S.E., Minneapolis, MN 55414; Kathy Tyra Leestma, X, (Martin) 10849 Forestview Cr., Eden Prairie, MN 55344

**Mississippi, U. of** - ΔP (N South) - Ellen Gallina, \*P.O. Box 8137, University, MS 38677; Betty Jane Parks Gary, ΔΠ, (Oscar) 910 Buchanan St., Oxford, MS 38655

**Missouri, U. of** - Θ (Z East) - Sheila Jesse, \*512 E. Rollins St., Columbia, MO 65201; Caroline Decker, Θ, 1400 Bass, Columbia, MO 65201

**Monmouth C.** - A<sup>3</sup> (E South) - Tonya Meier, \*Box 917, Monmouth, IL 61462; Brigit Sparling Keefe, E, (John) 714 N. 9th St., Monmouth, IL 61462

**Montana, U. of** - BΦ (I East) - Julie Meslow, \*1005 Gerald, Missoula, MT 59801; Teresa Betts, BΦ, 1362 Dickinson, Missoula, MT 59802

**Nebraska, U. of** - Σ (Z West) - Stacy Switzer, \*616 N. 16th, Lincoln, NE 68508; Lisa Schmidt, BΘ, 100 N. 12th St. #803, Lincoln, NE 68508

**New Mexico, U. of** - ΓB (E West) - Laura Dunda, \*1620 Mesa Vista Rd., NE, Albuquerque, NM 87106; Caroline Claiborne, ΓB, 5800 Eubank N.E. #1831, Albuquerque, NM 87111

**North Carolina, U. of** - EΓ (A West) - Ginger Lolley, \*302 Pittsboro St., Chapel Hill, NC 27514; Marjorie Lancaster Crowell, EΓ, (Mark) 105 Harrington Point, Chapel Hill, NC 27514

**North Texas, U. of** - ZΣ (Θ West) - Katherine Thompson, \*204 Ave. E. #3, Denton, TX 76201; Carolyn Scott Bray, ZΣ, 1909 Highland Park Cr., Denton, TX 76205

**Northwestern U.** - Y (E North) - Liz McDermott, \*1871 Orrington Ave., Evanston, IL 60201; Heather Winch, Y, 1518 Oak St., Evanston, IL 60201



EE—Emory; enjoying the snow



**Ohio State U.** - BN (I South) - Amy Haigh, \*55 E. 15th Ave., Columbus, OH 43201; Heidi Moorma Bowman, ZK, (Michael) 2144 Sharwood Crt., Worthington, OH 43235

**Ohio Wesleyan U.** - P<sup>3</sup> (G North) - Caroline King, \*126 W. Winter St., Delaware, OH 43105; Sally Christiansen, P<sup>3</sup>, 302 N. Franklin St., Delaware, OH 43105

**Oklahoma State U.** - ΔΣ (Ξ) - Jenifer Cook, \*1212 W. 4th, Stillwater, OK 74074; Althea Jacobsen Wright, ΔΣ, (Melvin) 1105 Springdale, Stillwater, OK 74074

**Oklahoma, U. of** - BΘ (Ξ) - Nancy Cloud, \*700 College, Norman, OK 73069; Karen Smith Lambert, BΘ, (Robert) 2522 Walnut Rd., Norman, OK 73072

**Oregon State U.** - ΓM (II North) - Audra Sasser, \*1335 N.W. VanBuren, Corvallis, OR 97330; Laurie Putnam Olsen, ΓM, (Randy) 550 Wagon Wheel Dr., Lebanon, OR 97355

**Oregon, U. of** - BΩ (II South) - Margaret Muir, \*821 E. 15th St., Eugene, OR 97401; Mary Kay Trimble Williams, BΩ, 2337 Hilyard St., Eugene, OR 97405

**Pennsylvania State U.** - ΔA (B East) - Catherine Carbonetta, \*108 S. Cooper Hall, University Park, PA 16802; Frances Anne Riley, ΔA, Box 520, Boalsburg, PA 16827

**Pittsburgh, U. of** - ΓE (B West) - Joan Harbaugh, \*4401 Bayard St., Pittsburgh, PA 15213; Mary McCloskey Vey, BΘ, (Paul) 1166 Pinewood Dr., Pittsburgh, PA 15243

**Puget Sound, U. of** - EI (I West) - Connie Correll, \*Smith Hall 1500 N. Warner St., Tacoma, WA 98416; Betsy Ellington Davis, EI, (Charles) P.O. Box 7284, Tacoma, WA 98407

**Purdue U.** - ΓΔ (Δ South) - Kelly Klinker, \*325 Waldron, W. Lafayette, IN 47906; Catherine Reynolds Scott, ΓΔ, (Steven) 625 Russell St., W. Lafayette, IN 47906

**Richmond, U. of** - ZO (A West) - Cynthia Huffard, \*Box 1718, University of Richmond, Richmond, VA 23173; Barbara Cole Thornhill, ΓK, 4105 W. Franklin, Richmond, VA 23221

**Rollins C.** - ΔE (M South) - Ann Casey, \*Campus Box 1267, Winter Park, FL 32789; Jane Goodnow DuVall, ΔE, (Jack) 1525 Bonnie Burn Cr., Winter Park, FL 32789

**St. Lawrence U.** - BB<sup>3</sup> (A North) - Deborah Cashman, \*45 E. Main St., Canton, NY 13617; Karen Pflugheber Gunnison, BB<sup>3</sup>, 3 Broad St., Potsdam, NY 13676

**South Carolina, U. of** - EK (M North) - Julia Morgan, \*U.S.C. P.O. Box 85128; Myra Frailey Morton, EK, (Sam) 504 Kenton Dr., Irmo, SC 29063

**Southern California, U. of** - ΔT (K North) - Susan Beth Kahn, \*929 W. 28th St., Los Angeles, CA 90007; Wendy Maners, ΔT, 3612 Manhattan Ave., Manhattan Beach, CA 90266

**Southern Methodist U.** - ΓΦ (Θ East) - Anne Ellington, \*3110 Daniels, Dallas, TX 75205; Sandy Edwards Ammons, ΔΣ, (John) 6046 Revere Pl., Dallas, TX 75206

**Stanford U.** - BH<sup>3</sup> (P North) - Carolyn Shaw, \*P.O. Box 3626, Stanford, CA 94305; Joan Minneman Cannon, ΓA, (David) 2812 Alida St., Oakland, CA 94602

**Syracuse U.** - BT (A South) - Joanna Crist, \*743 Comstock Ave., Syracuse, NY 13210; Muriel Illingworth Gallagher, BT, (John) 6226 The Hamlet, Jamesville, NY 13078

**Tennessee, U. of** - EA (N North) - Kimberly Ujich, \*%Panhellenic Office, 1531 Cumberland, Knoxville, TN 37916; Phyllis Holladay, EA, 1020 Buckthorn Dr., Knoxville, TN 37912

**Texas A&M U.** - EP (Θ East) - Tamara Lee Woelfel, \*1502 Athens, College Station, TX 77840; Jody Baker Cochran, ΔP, (Larry) 2846 Forestbend, Bryan, TX 77801

**Texas Christian U.** - EA (Θ West) - Carolyn Ingle, \*Box 29721, Texas Christian U., Ft. Worth, TX

76129; Sandra Stokes Mc Gowan, EA, (John) 8608 Greentree Ct., Ft. Worth, TX 76179

**Texas Tech U.** - ΔΨ (Θ West) - Catherine Collins, \*Box 4108, Tech Station, Lubbock, TX 79409; LeAnn Martin Grantham, ΔΨ, (Terry) 5225 89th St., Lubbock, TX 79424

**Texas, U. of** - BE (Θ West) - Kathi Scott, \*2001 University Ave., Austin, TX 78705; TBA: Contact Theta W. PDC

**Toronto, U. of** - BΨ (A North) - Tanya Kelly, \*32 Madison Ave., Toronto, ON CAN M5R 2S1; Jane Litherland, BΨ, 83 Isabella St. 314, Toronto, ON CAN M4Y 1N7

**Trinity C.** - ZΘ (P South) - Elizabeth Clifford, \*Box 1391, Hartford, CT 06106; Margaret Hanna Hellwig, EA, (G.Vincent) 66 Fernwood Dr., Simsbury, CT 06070

**Tulane U.** - BO (U East) - Meg Lauritzen, \*1033 Madubon St., New Orleans, LA 70118; Edie Charbonnet Steinhardt, ΔP, (Bill) 2522 Fern St., New Orleans, LA 70118

**Tulsa, U. of** - ΔΠ (Ξ) - Julie Nilsson, \*3146 E. 5th Pl., Tulsa, OK 74104; Pamela Paganis Short, ΔΠ, (Marcus) 1227 S. Birmingham Pl., Tulsa, OK 74104

**Utah, U. of** - ΔH (H West) - Ellen Bergstedt, \*33 S. Wolcott St., Salt Lake City, UT 84102; Amy Colburn Ross, ΔH, (Robert) 4098 S. 1400 E., Salt Lake City, UT 84124

**Vanderbilt U.** - EN (N North) - Tracy Dunham, \*2416 Kensington Pl., Nashville, TN 37212; Melissa Ford, EN, 4148 Outer Dr., Nashville, TN 37204

**Vermont, U. of** - ZΔ (P North) - Kathryn Jones, \*448 S. Prospect St., Burlington, VT 05401; Mena Incerpi, ZΔ, 19 1/2 Forest St., Winooski, VT 05404

**Villanova U.** - ZI (B East) - Laura Diesl, \*108 Dougherty Hall, Activities Office, Villanova, PA 19085; Margot Van Buskirk Hoerner, ΔΦ, (Eric) 116 Montrose Ave., Rosemont, PA 19010

**Virginia Tech U.** - ZM (A West) - Kathy Kersten, \*P.O. Box 10248, 4600I Terrace View, Blacksburg, VA 24062; Elizabeth Field Thomas, EH, (J.R.) 105 Suzanna Dr., Blacksburg, VA 24060

**Virginia, U. of** - EΣ (A East) - Suzanne De Mallie, \*503 Rugby Rd., Charlottesville, VA 22903; Carol Tennery, ZM, Rt. 4 Box 306, Charlottesville, VA 22901

**Washington State U.** - ΓH (I West) - Jodie Russ, \*N.E. 800 Campus, Pullman, WA 99163; Lynda Herndon Carey, BK, (Matthew) S.E. 1110 Spring, Pullman, WA 99163

**Washington U.** - ΓI (Z East) - Lauren Squire, \*1 Brookings Dr., Box 1182, St. Louis, MO 63130; Martha Deetz Behnen, E, (David) 9885 Conway Rd., St. Louis, MO 63124

**Washington, U. of** - BΠ (I West) - Kate Radovich, \*4504 18th Ave. NE, Seattle, WA 98105; Shirley Marinkovich, BΠ, (Donald) 5700 64th Ave. N.E., Seattle, WA 98105

**Washington & Jefferson C.** - ZA (B West) - Debra Smith, \*310 E. Beau St., Washington, PA 15216; Frances Smith, ZA, 944 Lovington Dr., Pittsburgh, PA 15216

**Washington & Lee U.** - ZT (A West) - Heather Brock, \*P.O. Box 1543, Lexington, VA 24450; Emily Smitherman Reel, M, (Robert) RFD 5, Lexington, VA 24450

**Westminster C.** - ZZ (Z East) - Kim Boswell, \*Westminster Coll., Fulton, MO 65251; Susan Denty Lippincott, Θ, (John) Twin Oaks, Rt. 2, Fulton, MO 65251

**West Virginia U.** - BY (A West) - Cassy Salgado, \*265 Prospect St., Morgantown, WV 26505; Jo Ann Dodds Richardson, BY, (Ronald) 666 Bellaire Dr., Morgantown, WV 26505

**Whitman C.** - ΓT (I East) - Natalie Fousekis, \*c/o Whitman Coll., Walla Walla, WA 99362; Jan Hough Rolfe, ΓT, (Phil) 1921 Hilbrooke Dr., Walla Walla, WA 99362

**William and Mary, C. of** - ΓK (A East) - Michelle Lovelady, \*1 Richmond Rd., Williamsburg, VA 23185; Elaine Justice, ΓK, 119 White Water Dr., Newport News, VA 23602

**Wisconsin, U. of** - H (E North) - Jennifer Rogers, \*601 N. Henry St., Madison, WI 53703; Debbie Osborn, H, 7802 Big Sky Dr. #36, Madison, WI 53719

**Wyoming, U. of** - ΓO (E West) - Elizabeth Albro, \*Kappa Kappa Gamma, University Station, Laramie, WY 82070; Janet Rundquist Quinn, ΓO, (Thomas) P.O. Box 134, Laramie, WY 82070

**Yale U.** - ZE (P South) - Mary Beth Draper, \*P.O. Box 491, Yale Station, New Haven, CT 06520; Ann Hooker, ΔZ, 45 Birch Dr., New Haven, CT 06515



Kappa house, ΓH—Washington State



# ALUMNAE ASSOCIATION & \*CLUB PRESIDENTS

## Canada

\*British Columbia (I) - Vickie Frost Hyndman, PY, (Peter) 2880 W. 41st Ave., Vancouver, BC, CAN V6W 1C5

Montreal (A) - Contact PDA

\*Ottawa (A) - Joan Gorowski McDougall, ΔΔ, 42 Amberly Pl., Ottawa, ON, CAN K1J 8A1

Toronto (A) - Bea Thorkelson Ramsay, BΨ, (R.B.) One Concorde Pl. 2206 Highgate, Don Mills, ON, CAN M3C 3K6

## England (A)

\*London - Mary Robert Dickerson, A, (John) 47 Creffield Rd., Ealing, London, England W53RR

## United States of America

### Alabama (Nu)

\*Anniston Area - Sheila Kavanagh Sylvester, E, (Larry) 730 Park Ave., Anniston, AL 36201

\*Auburn - Karen Clifford Montjoy, ΔP, (Robert) 313 Cricket Ln., Auburn, AL 36830

Birmingham - Laura Van Leer, EH, 1721 A Valley Ave., Homewood, AL 35209

\*Brewton Area - Maureen Douglas O'Neil, ΓΠ, (Jack) P.O. Box 1349, Brewton, AL 36426

\*Gadsden - Dele Dickson Cannon, ΓΠ, (Ron) 314 Turrentine Ave., Gadsden, AL 35901

\*Huntsville - Nancy Edison Singleton, ΓΠ, (Brian) 1017 Coronado Dr., Huntsville, AL 35802

Mobile - Louise Yelverton Rayford, ΓΠ, (Forress) 1013 Hampton Gate, Mobile, AL 36608

\*Montgomery - Laura Patrick McLemore, ΓΠ, 2049 Woodley Rd., Montgomery, AL 36111

Tuscaloosa - Betty Waugh Green, ΓΠ, (Bruce) 2400 Yorktown Dr., Tuscaloosa, AL 35406

### Alaska (Iota)

\*Anchorage - Linda Lee Covert, BO, 3821 Laron Ln., Anchorage, AK 99504

### Arizona (Kappa)

East Valley - Kay Reid Tennison, EΔ, (William) Crystal Meadows Ranch, 30682 County Rd. #12, Somerset, CO 81434 (until Nov. 1); 1735 N. Val Vista, Mesa, AZ 85203

\*Northern Arizona - Patricia Patridge Cornish, ΔΣ, (Richard) 1668 Mariposa, Flagstaff, AZ 86001

Phoenix - Janet Oglesby Reed, EΔ, (David) 11255 N. 23rd St., Phoenix, AZ 85028

Scottsdale - Lynn McCormick Guyot, M, (William) 7724 E. Harvard, Scottsdale, AZ 85257

\*Sun City - Bette Limpert Mayhew, Ψ<sup>3</sup>, (Karl) 10429 Monterosa Dr., Sun City, AZ 85351

Tucson - Pennie Harsus, ΓZ, 4415 E. Ft. Lowell Rd., Tucson, AZ 85712

### Arkansas (Xi)

\*Benton County - Susan Jackson Keller, ΓN, (James) 901 S. 20th St., Rogers, AR 72756

\*El Dorado - Candace Henry Nobles, ΓN, (Hutton) 1600 N. Madison, El Dorado, AR 71730

\*Fayetteville - Susie Workman Henderson, ΓN, (Walter) 2185 Lensfield Pl., Fayetteville, AR 72703

\*Fort Smith - Kelley Graves Cardwell, ΓN, (Mike) 9801 Muirfield Cr., Ft. Smith, AR 72903

Greater Little Rock - Sue Darby Gaston, ΓN, (James) 20 Armistead Rd., Little Rock, AR 72207



ΔN—Massachusetts; that's what it's all about



ΔM—Connecticut chapter meeting



Groundbreaking at Virginia Tech for Zeta Mu lodge.

\*Hot Springs - Melinda Blair French, ΓN, (David) Rt. 2, Box 59-A, Hot Springs, AR 71901

\*North Arkansas - Caroline Poole Cameron, EZ, (Mike) 1612 Leaf Cove, Jonesboro, AR 72401

\*Northeast Arkansas - Diane Baker Britton, ΓN, (Blann) P.O. Box 32 Crawfordville, AR 72327

\*Pine Bluff - Julie Schroeder Bridgeforth, ΓN, (William) 204 Park Pl., Pine Bluff, AR 71601

\*Texarkana - Rosemary Smith Hardy, ΓN, (Paul) 6421 Edgehill Cr., Texarkana, AR 75502

## California (Pi) (Kappa)

\*Amador Valley - Astrid Bez, ΓE, 4 Greens Ln., Pleasanton, CA 94566

Arcadia - Carolyn Laws, BII, 617 Santa Rosa Rd., Arcadia, CA 91006

Contra Costa County - Adena Reed Verdi, EO, (Ronald) 211 Shady Glen Rd., Walnut Creek, CA 94596

East Bay - Madeline Henning Hickling, X, (Douglas) 237 Park View Piedmont, CA 94610

Fresno - Joan Crawford, ΔO, 145 E. Andrews Fresno, CA 93711

Glendale-Burbank - Susie Basanda, Δ, 349 Pebble Beach, Azusa, CA 91702

\*Imperial Valley - Nancy Vine Kellogg, ΔZ, (Howard) 427 Russel Rd., Brawley, CA 92227

\*Inland Empire - Jennifer Mottershaw, EII, 600 Central #328, Riverside, CA 92507

La Canada Valley - Shirley Littrell Myers, ΓT, (Richard) 1033 Flanders Rd., La Canada, CA 91011

Laguna Hills - Mary Milbank Cutting, II<sup>3</sup>, (E. Lester) 3372-A Punta Alta, Laguna Hills, CA 92653

La Jolla - Clarissa Howe Beerbower, ΔΘ, (Alan) 7450 Olivetas #215, La Jolla, CA 92037

Long Beach - Cindy Haffner Howe, ΓH, (James) 2761 Mainway, Los Alamitos, CA 90720

Los Angeles/Westwood - Marguerite Heyn Byrne, ΓΞ, (Richard) 116 N. Las Palmas Ave., Los Angeles, CA 90004

Marin County - Ann Mahony, BP<sup>3</sup>, 900 Chestnut St., San Francisco, CA 94109

\*Monterey County - June Korb Jaffee, Σ, (J. Jay) 330 E. Caminito Rd., Carmel Valley, CA 93924

North San Diego County - Janet Seerth Shradler, ΔK, (Terrell) 1564 San Pablo Dr., Lake San Marcos, CA 92069

Northern Orange County - Lana Borin Hutcheson, BZ, (Jerry) 18259 Laurel View Dr., Yorba Linda, CA 92686

Palo Alto - Lynne Douglas Miller, EN, (Bradford) 2486 Redbud Ct., San Jose, CA 95128

Pasadena - Louise Benson Ball, Σ, (Louis) 1610 Spruce St., S. Pasadena, CA 91030

\*Pomona Valley - Carla McKnight Buchanan, ΓN, (Allen) 185 N. Willow Springs Rd., Orange, CA 92669

\*Rancho Bernardo-Poway - Katie Manion O'Sullivan, ΓΞ, (Edward) 2808 Anaheim, Escondido, CA 92025

Sacramento Valley - Kris Erickson Astone, ΓO, (Edwin) 4113 Zephyr Way, Sacramento, CA 95821

\*Saddleback/Capistrano - Nancy Holden Villeneuve, ΓΣ, (John) 27671 Golondrina, Mission Viejo, CA 92692

San Diego - Janice Bullen Wright, ΓB, 4045 Coutts St., San Diego, CA 92103



San Dieguito - Marian Teare Brabyn, ΓA, (Philip) P.O. Box 1746 Rancho Santa Fe, CA 92067

San Fernando Valley - Sonja Wendt, ΕΞ, 10346 Zelzah #5, Northridge, CA 91326

San Francisco - See Marin County

San Jose - Lisa Wilson Bridges, K, (Roger) 1198 Fairview Ave., San Jose, CA 95125

San Mateo - Teddy Gehr Jacobsen, ΔX, (Albert) 195 Flying Mist Isle, Foster City, CA 94404

Santa Barbara - Diana Baskerville Mohme, ΓΞ, (Richard) P.O. Box 30812, Santa Barbara, CA 93130

\*Santa Cruz County - Marge Held Christmann, ΓI, (Henry) 14 S. Circle Dr., Santa Cruz, CA 95060

Santa Monica-Westside - Maria Dylan, BΦ, 3031 Grandview Blvd. #106, Los Angeles, CA 90066

\*Sonoma County - Nina Ritt Vaughan, Ω, (Gerald) 3988 Shadowhill Dr., Santa Rosa, CA 95404

South Bay - Lynn Jackson Bramhall, ΓΞ, (John) 5010 Vista Del Vegas, Torrance, CA 90505

Southern Orange County - Sue Starr Graham, ΓΔ, (Tom) 1106 Redding Ave., Costa Mesa, CA 92626

\*Stockton Area - Leslie Ledden Sherman, ΔΣ, (Stephen) 3918 Ft. Donelson, Stockton, CA 95209

\*Tulare-Kings County - Mary Lindaur Warner, ΔO, 1117 S. Jeffrey Ct., Visalia, CA 93291

\*Ventura County - Contact PDA

\*Whittier - Elizabeth Bartle Greulich, ΔX, (James) 15940 Mikinda Ct., Whittier, CA 90603

#### Colorado (Eta)

Boulder - Susan Gardner Pollack, BM, (Albert) 1287 S. Teal Ct., Boulder, CO 80303

Colorado Springs - Elizabeth Whitten Dragoo, Σ, (Doug) 3019 Springmeadow Dr., Colorado Springs, CO 80906

Denver - Anne Witte Curran, Σ, (F.J.) 4701 Tule Lake Dr., Littleton, CO 80123

\*Ft. Collins - Sally Tallman Conway, EB, (John) 1722 Hillside Dr., Ft. Collins, CO 80524

\*Grand Junction - Barbara Adams, BT, 3150 Lakeside Dr. #306, Grand Junction, CO 81506

\*Greeley - Dorothy Chapman Sullivan, ΓK, (Patrick) 1867 39th Ave., Greeley, CO 80631

\*Pueblo - Mary Graham Rawlings, A<sup>3</sup>, (Robert) 3100 Country Club Dr., Pueblo, CO 81003

#### Connecticut (Rho)

\*Eastern Connecticut - Carol Graeber O'Connell, ΔN, (Gerald) 15 Virginia Dr., Ellington, CT 06029

Fairfield County - Anne Smith Davis, ΓX, 12 E. Beach Dr., Rowayton, CT 06853

Hartford - Gloria Santiglia, ΔM, 68 Victoria Rd., Hartford, CT 06114

\*New Haven - Susan Hart Ryan, ΔΞ, (John) 256 Clark Ave., Branford, CT 06405

#### Delaware (Beta)

Delaware - Elsa Raseri Batman, ΔM, (David) 1807 N. Lincoln St., Wilmington, DE 19806

#### District of Columbia (Lambda)

Washington DC-Suburban Maryland - Julianne Breaux Hobbes, ΔI, (Tom) 3608 Raymond St., Chevy Chase, MD 20815

#### Florida (Mu)

\*Brevard County - Marjorie Pond Blanchette,



BK—Idaho; the phone booth serving as a study hide-away



BZ—Iowa; actives with KP duty before a rush party.



ZA—Babson; was there really life before the PC?

BB<sup>3</sup>, (Norbert) 916 Golden Beach Blvd., Indian Harbor Beach, FL 32937

Central Florida - Cynthia Farris Malby, E<sup>3</sup>, (Dallas) 1648 Barcelona Way, Winter Park, FL 32789

Clearwater Bay - Elizabeth Phillips Runkle, A<sup>3</sup>, (Donald) 3625 Fairway Forest Cr., Palm Harbor, FL 34685

Ft. Lauderdale - Lucy Quist Mullins, BP<sup>3</sup>, (Lawrence) 1406 N.E. 57th St., Ft. Lauderdale, FL 33334

\*Gainesville - Ruthanna Warner Schweyer, ΓΩ, 1115 N.W. 13th Ave., Gainesville, FL 32601

\*Indian River - Mary Lou Cole Attarian, BB<sup>3</sup>, (Edward) 61 Cache Cay Dr., Vero Beach, FL 32963

Jacksonville - Judi Poettgen Luepke, A<sup>3</sup>, (Paul) 1118 Linwood Ln., Jacksonville, FL 32259

\*Lee County - Glenna Ballard Kelly, BX, 5586 Williamson Way, Ft. Myers, FL 33919

Miami - Ana Maria Cruz, EΦ, 7602 S.W. 129th Pl., Miami, FL 33183

\*Palm Beach County - Susan Taylor Duane, BO (Marshall) 1095 Hibiscus Ln., Delray Beach, FL 33444

\*Pensacola - Judy Bell Prim, ΔP, (Jim) 6350 Heart Pine Dr., Pensacola, FL 32504

\*Sarasota County - Alice Bowman Price, BP<sup>3</sup>, (Edwin) 1415 Harbor Dr., Sarasota, FL 34239

\*St. Petersburg - Mary Macauley Ball, EΦ, (Frank) 6201 Tanglewood Dr. N.E., St. Petersburg, FL 33702

\*Stuart Area - Linda Van Atta Howes, ΓΩ, (Mitchell) 3481 S.W. Centre Ct., Palm City, FL 34990

\*Tallahassee - Margaret Ellett Sheffield, EZ, (John) 4149 Tralee Rd., Tallahassee, FL 32301

Tampa Bay - Paula Pickett Blaine, ΓΔ, (Ralph) 705 S. Newport, Tampa, FL 33606

#### Georgia (Mu)

\*Athens - Gina Jackson Tillman, ΔY, (Billups) 250 Phimarga Ln., Athens, GA 30606

Atlanta - Cathleen Morrow McKinney, EE, (Ray) 5598 Bunky Way, Dunwoody, GA 30338

\*Columbus - Patricia Mudter Hobbs, ΔY, (Dan) 1529 Stark Ave., Columbus, GA 31906

Golden Isles - Marianna Wilson Elias, ΔY, (William) 418 Seabreeze Dr., St. Simon's Island, GA 31522

\*Greater Augusta - Linda Mountjoy Winn, ΔY, (Keith) 596 Firestone Pl., Martinez, GA 30907



ΔN—Massachusetts; special times with sisters.



Macon & Middle Georgia - Julie Young Wilker-  
son, ΔY, 381 Hines Terr., Macon, GA 31204

Savannah - Anne Williams Dauray, ΓΨ, (Paul)  
Huntingwood Retreat, Savannah, GA 31411

Waycross - Becky Willingham Hines, ΔY, (Har-  
s) 130 River Oaks Dr., Blackshear, GA 31516

### Hawaii (Kappa)

Hawaii - Be Ge Smith Bramley, ΓΨ, (Richard)  
882 Niumalu Lp., Honolulu, HI 96825

### Idaho (Iota)

Boise - Joan Sorenson Sullivan, BK, (Willis) 118  
J. Walnut St., Boise, ID 83712

Lewiston-Clarkston - Marjie Bradbury John-  
son, BK, 904 13th Ave, Lewiston, ID 83501

Moscow - Contact PDA

Twin Falls - Joan Anderson Fay, BK, (Gary)  
410 9th Ave. E., Twin Falls, ID 83301

### Illinois (Epsilon)

Arlington Heights - Susan Bowman Farr, EA,  
Craig) 20 Ashbury Ln., Barrington Hills, IL  
60010

Beverly South Shore - Barbara Wing Buikema,  
E, (David) 9911 S. Oakley, Chicago, IL 60643

Bloomington - Donna Johnson Naylor, E, (John)  
R.R. 4 P.O. Box 225 Bloomington, IL 61701

Champaign-Urbana - Adlon Dohme Jorgensen,  
JA, (Richard) 1013 Hadley, Champaign, IL  
61821

Chicago Loop - Melissa Kemp, Y, 1421 N. Dear-  
born Pkwy. #401, Chicago, IL 60610

Chicago South Suburban - Winogene Weix  
Kile, H, (Otho) 5 Strauss Ln., Olympia Fields,  
IL 60461

Decatur - Cathleen Condon Rees, A<sup>2</sup>, (Daniel)  
667 Brookline Pl., Decatur, IL 62521

Elmhurst - Patricia Schad Staats, ΓΩ, (Gor-  
don) 483 Commonwealth, Elmhurst, IL 60126

Glen Ellyn-Wheaton - Virginia Gay Reynolds,  
ΔO, (Glenn) 384 Cottage Ave., Glen Ellyn, IL  
60137

Hinsdale - Susan Paul Kostelny, BA, (Gerald)  
407 E. 6th St., Hinsdale, IL 60521

Illinois Fox Valley - Marcia Bogaard McCrack-  
en, I, (Tom) 218 Kenston Ct., Geneva, IL 60134

Kankakee-Iroquois - Mary Alice Funk Ahroon,  
BA, 5 Marquette Ln., Kankakee, IL 60901

La Grange - Dale Goble Nowicki, ΓΘ, (Thomas)  
3958 Rose Ave., Western Springs, IL 60558

Little Egypt - Barre Mulliken Briggs, E, (Skip)  
7 Pinewood Dr., Carbondale, IL 62901

Monmouth - Mary Castle Josephson, A<sup>2</sup>,  
(Charles) Roseville, IL 61473

\*Naperville - Patti Jones Dutcher, P<sup>2</sup>, (Fred)  
624 Burning Tree Ln., Naperville, IL 60540

North Shore - Colleen Pillman, EB, 7 The Ct. of  
Charlwood, Northbrook, IL 60062

North Suburban - Mary Jane Nystrom Hender,  
ΓΨ, (George) 621 College Rd., Lake Forest, IL  
60045

\*Park Ridge Area - Gayle Swick Richter, Δ,  
(George) 525 S. Western Ave., Park Ridge, IL  
60068

\*Peoria Area - Nancy Bostock Whittall, ΔΠ,  
(Herbert) 4405 W. Cathy Cr., Peoria, IL 61615

Oak Park-River Forest - Nancy Sheehan  
Quinn, Ω, (Edward) 1415 Forest Ave., River  
Forest, IL 60305

\*Rockford - Anne Mason Murphy, H, (John)  
1605 Emerson, Beloit, WI 53711

Quad-Cities - See Iowa

Springfield - Mary Mitchell Beaumont, Ψ<sup>2</sup>,  
(John) 1933 Barberry, Springfield, IL 62704

### Indiana (Delta)

\*Anderson - Gwen Hamm Elpers, ΓΔ, (Roger)  
1319 VanBuskirk, Anderson, IN 46011

Bloomington - Phyllis Rich Hackler, Δ,  
(Richard) 1911 Locust Ct., Bloomington, IN  
47401

\*Bluffton - Carolyn Buckner Newell, Δ,  
(Stephen) 532 Orchard Ridge Ln., Bluffton, IN  
46714

\*Boone County - Laurie Slaughter Brown, ΔΓ,  
(Benjamin) 2108 Elizaville Rd., Lebanon, IN  
46052

\*Columbus - Joellen Rawlins, Δ, 1510 Franklin  
St., Columbus, IN 47201

East Lake-Porter County - Letitia Perrotta  
Furlin, Δ, (Sam) 178 W. Windridge Rd., Val-  
paraiso, IN 46383

\*Elkhart - Mary Zuverink Rueff, BX, 1801 Roys  
Ave., Elkhart, IN 46516

Evansville - Marcia Hahn Volkman, Δ,  
(Michael) 8100 Azalea Dr., Evansville, IN  
47712

Ft. Wayne - Kimberly Hill Moppert, K, (Fletch-  
er) 13327 Liberty Mills Rd., Ft. Wayne, IN  
46804

\*Greencastle - Ann Remley Rambo, ΓB, (James)  
1025 S. College, Greencastle, IN 46135

\*Hammond Area - Margaret White Wilke, Ψ<sup>2</sup>,  
(William) 2255 Bordeaux Walk, Highland, IN  
46322

Indianapolis - Alyson Hermayer Smith, M,  
(David) 6265 N. Chester, Indianapolis, IN 46220

\*Kokomo - Barbi Bush Hilton, ΓΔ, 1616 W. Wal-  
nut, Kokomo, IN 46901

Lafayette - Jane Jarrell Mallett, ΓΔ, (J. Craig)  
205 Cedar Hollow Ct., W. Lafayette, IN 47906

\*Marion - Jane Campbell King Rosenberg, Δ,  
(David) 501 W. Nelson St., Marion, IN 46952

\*Martinsville - Bonnie Moore Bellinger, M,  
(John) 1901 Gold Creek Rd., Mooresville, IN  
46158

Muncie - Debra Millbern Powers, Δ, (James)  
3915 W. Godman, Muncie, IN 46158

\*Richmond - Sue Smith Quigg, Δ, (William) 103  
Garwood Rd., Richmond, IN 47374

South Bend-Mishawaka - Carolyn Robinson  
Hudson, Δ, (Daniel) 19197 Edinburg, South  
Bend, IN 46614

\*Terre Haute - Jane Alexander Bannon, Δ,  
(William) 2126 Ohio Blvd., Terre Haute, IN  
47803

### Iowa (Omicron)

\*Ames - Judith Hopkins Huebsch, BZ, (Scott)  
R.R. 4, Hickory Hills, Ames, IA 50010

\*Burlington - Jane Thode Walsh, BZ, (Charles)  
RR 1 Niconha Pl., Burlington, IA 52601

Des Moines - Denise Foster Holck, ΓΘ, (Alan)  
6044 N. Waterbury Rd., Des Moines, IA 50312

\*Ft. Dodge Area - Sally McKlveen Sandblom,  
ΔO, (Steven) P.O. Box 66 Humboldt, IA 50548

Iowa City/Cedar Rapids - Patricia Cross Koza,  
ΓI, (John) 209 Lexington Ave., Iowa City, IA  
52246

Quad-Cities - Maura Monroe, BZ, 126 W. Cen-  
tral Park Dr., Davenport, IA 52803

### Kansas (Zeta)

Hutchinson - Alice Fisher Arbuckle, ΓK,  
(Robert) 5001 N. Halstead, Hutchinson, KS  
67502

\*Kansas City, Kansas - Judy Vest Roberts, ΓA,  
(Clay) 1201 N. 80th, Kansas City, KS 66112

Lawrence - Suzanne Ecke McColl, ΔZ, (Robert)  
1519 Crescent Rd., Lawrence, KS 66044

Manhattan - Miriam Hobbs Milleret, ΓA, (Roy)  
2817 Virginia, Manhattan, KS 66502

\*Salina - Jane McComb Struble, EB, (Roger)  
515 W. Ellsworth, Salina, KS 67401

Topeka - Pamela Drummond Hatfield, ΓA,  
(Dean) 3629 Avalon Ln., Topeka, KS 66604

Wichita - Gretchen Lee Andeel, Ω, (Stanley)  
1430 Homestead, Wichita, KS 67081



ΔΛ—Miami U.; preparing for the pledge-active progressive dinner.

PDA's—busy in ACS workshop session; Council Room, Fraternity Headquarters.



### Kentucky (Nu)

\*Bowling Green Area - Virginia Fincel Redford, BX, (Carroll) 106 Ridgecrest Dr., Glasgow, KY 42141

Lexington - Betsy Banks Watkins, BX, (Thomas) 2193 Lakeside Dr., Lexington, KY 40502

Louisville - Katherine Sanders Watkins, BX, (Shelton) 185 Westwind Dr., Louisville, KY 40207

### Louisiana (Theta)

\*Alexandria - Catherine Brame, ΔI, 4051 Bayou Rapides Rd. #511, Alexandria, LA 71303

Baton Rouge - Madeline Sardisco Bergeron, ΔI, (Patrick) 2236 Cherrydale Ave., Baton Rouge, LA 70808

\*Lafayette Area - Angela Bean Vermillion, EA, (Pete) 201 Adrienne, Lafayette, LA 70506

\*Lake Charles - Cathy Barry Thompson, ΔI, (Bruce) 3720 Cobblestone Dr., Lake Charles, LA 70605

\*Monroe - Rebecca Bancroft Mintz, ΔI, (Andrew) 3342 Deborah Dr., Monroe, LA 71201

New Orleans - Laura Halton St. Clair, ΔP, (Douglas) 829 Eleonore St., New Orleans, LA 70115

Shreveport - Jane Duhe Box, ΔI, (Barry) 8718 E. Wilderness, Shreveport, LA 71106

### Maine (Rho)

\*Down East Maine - Virginia Hoyt Kurtz, ΔB, (Richard) 45 Eastern Promenade #4E, Portland, ME 04805

### Maryland (Lambda)

\*Annapolis - Ann Otto, ΓΨ, 2904 Southhaven Dr., Annapolis, MD 21401

Baltimore - Margaret Moots Cline, BA, (Richard) 1433 Jeffers Rd., Towson, MD 21204

\*Howard County - Sheila Wright Rovelstad, BA, (Craig) 10746 Cordage Walk, Columbia, MD 21044

### Massachusetts (Rho)

\*Bay Colony - Nanci Arnold Wansong, ΓΦ, 7 Pitman Rd., Marblehead, MA 01945

Boston Intercollegiate - Judy Lapelle Mitchell, ΔΓ, (William) 39 Candy Hill Rd., Sudbury, MA 01776

\*Cape Cod - Shelley Carpenter Dawson, EF, (William) P.O. Box 716, 29 Briar Springs Rd., E. Orleans, MA 02643

### Michigan (Delta)

\*Adrian - Carolyn Ott Heffron, Ξ, (Hugh) 927 College Ave., Adrian, MI 49221

Ann Arbor - Mary Ann Mortenson, ΔΓ, 103 Fieldcrest #203, Ann Arbor, MI 48103

\*Battle Creek - Louise Pfeffer Steel, I, (William) 2342 Ramblin, Battle Creek, MI 49017

Detroit East Suburban - Diane Davison Marston, K, (Michael) 867 Balfour, Grosse Pointe, MI 48230

Detroit North Woodward - Whitney Pope Shapland, BA, (Robert) 3580 Woodale Ct., Birmingham, MI 48010

\*Detroit Northwest Suburban - Fraya Wagner Andrews, EΘ, (John) 19331 Gary Ln., Livonia, MI 48152

Grand Rapids - Shelley Appel Parente, I, 5896 N. La Casa Ct., Kentwood, MI 49588

\*Jackson - Clara Dowling Noble, ΔΓ, (Russell) 1728 Maybrooke, Jackson, MI 49203

\*Kalamazoo - Laurie Russell Benson, K, (Bruce) 3332 Troon Ct., Kalamazoo, MI 49002



ΔA—Miami U.; picnic for the pledges.



ΓA—Kansas State; the "string game" for revealing big sister names

Lansing-East Lansing - Pat Shaver, ΔΓ, 6152 Gossard, East Lansing, MI 48823

\*Midland - Judy Oxnam Campbell, BT, (Bruce) 5500 Summerset, Midland, MI 48640

\*St. Joseph-Benton Harbor - Elizabeth Bulleit Johnston, Δ, 2727 S. Lake Shore Dr., St. Joseph, MI 49085

\*Traverse Bay Area - Judith Wynn Halsted, P<sup>a</sup>, (David) 2300 Montmorency, Traverse City, MI 49684

### Minnesota (Omicron)

\*Duluth - Mary Mars Ostman, EB, (Paul) 2915 Greysolon Rd., Duluth, MN 55812

\*Rochester - Dorothy Wood Klopp, ΔE, (John) 1020 Orchard Acres, Rochester, MN 55902

Twin Cities - Betty Ann Canady Rabe, ΓΘ, (William) 4877 Dominica Way W., Apple Valley, MN 55124

### Mississippi (Nu)

Jackson - Glenda Boone Cox, ΔP, 104 Old Canton Hill, Jackson, MS 39211

\*Mississippi Gulf Coast - Lee Ann Hough, ΔP, 511 Mercedes Dr., Biloxi, MS 39531

\*Northeast Mississippi - Lindy Gary Graham, ΔP, (James) 502 Robins, Tupelo, MS 38801

### Missouri (Zeta)

\*Clay-Platte County - Rebecca Barbe Alderson, ΓA, (Mike) 1199 Clayview, Liberty, MO 64068

Columbia - Louise Wilson Valuck, Θ, (Jonathan) 1117 Woodhill Rd., Columbia, MO 65203

\*Joplin - Carolyn Beimdiek Phelps, Θ, (John) 1601 Grand, Carthage, MO 64836

Kansas City - Fran Kelly McDonald, Θ, (Jim) 14832 W. 81st Terr., Shawnee Mission, KS 66215

\*Mid-Missouri - Cynthia Jobe, Θ, 100 Amade Ave #44., Jefferson City, MO 65109

\*Springfield - Maryanne Onofrio H'Doubler, Θ, (Kurt) 1204 E. University, Springfield, MO 65804

\*St. Joseph - Tracee Tewell Hegarty, EΔ, (Court) 4406 Orange Tree Ct., St. Joseph, MO 64506

St. Louis - Laurian Taylor Singleton, ΓI, (Jordan) 715 E. Monroe, St. Louis, MO 63122

\*Tri-County - Kaye Weisenfels Dement, Θ, (Edward) 704 Allen, Skeston, MO 63801

### Montana (Iota)

Billings - Elizabeth Allbee Hall, ΓA, 1008 Pol Dr. #2A, Billings, MT 59102

\*Butte - Jean Hollingsworth Peterson, BΦ, (John) 1244 W. Steel, Butte, MT 59701

\*Great Falls - Janet McFarlane Tiffany, BΦ, (G.W.) 3408 12th Ave. S., Great Falls, MT 59405

\*Helena - June Bowman Johnson, BΦ, (Cordell) 520 Harrison, Helena, MT 59601

Missoula - Patsy Miller Jewell, BΦ, 1945 E. Broadway, Missoula, MT 59802

### Nebraska (Zeta)

\*Grand Island Area - Susanne Uerling Osberg Σ, (Mike) 1626 Coventry Ln., Grand Island NE 68801

Lincoln - Kathy Korff, Σ, 4701 Briarpark #57 Lincoln, NE 68502

Omaha - Beverly Dean Muffly, Σ, (Kirk) 3604 S. 107th St., Omaha, NE 68124

### Nevada

\*Southern Nevada - Stacey Martin St. Clair, ΔK, (Eric) 1900 S. 15th St., Las Vegas, NV 89104

### New Hampshire (Rho)

\*New Hampshire - Jane Brodnax Patterson, BA, (William) 4 Christian Dr., Nashua, NH 03063

### New Jersey (Beta)

Essex - Joan Musselman Bannon, BΣ, (John) 96 W. Passaic Ave., Bloomfield, NJ 07003

Lackawanna - Linda Morris Barnes, P<sup>a</sup>, (Ryan) 851 Springfield Ave. #15B, Summit, NJ 07901

\*North Jersey Shore - Sharon Carrel Gilmour, Δ, (George) 25 Maple Dr., Colts Neck, NJ 07722

Northern New Jersey - Sollace Molineux Bommer, ΓK, (Peter) 995 High Mountain Rd., Franklin Lakes, NJ 07417

Princeton Area - Connie Cox Robinson, BA, (Alex) 85 Sycamore Ln., Skillman, NJ 08558

Southern New Jersey - Carolyn Gowing Lockett, ΔN, (Gordon) 425 Paul Dr., Moorestown, NJ 08057

### New Mexico (Eta)

Albuquerque - Betty Huning Hinton, ΓB, 437 Carlisle N.E., Albuquerque, NM 87106

\*Hobbs - Dana Ewing, ΓB, 1933 N. McKinley, Hobbs, NM 88240

\*Las Cruces - Kathryn Brown Duhrsen, ΓP, (Lowell) 908 Conway, Las Cruces, NM 88005

\*Roswell - Ann Wright Hall, Θ, (Thomas) 1500 W. 8th St., Roswell, NM 88201

\*Santa Fe - Susan Stegner Summers, BΞ, (Dan) P.O. Box 1321, Santa Fe, NM 87504



### New York (Alpha)

Buffalo - Gayle Shaw Rawstern, Δ, (Bernard)  
94 Oakgrove Dr. Williamsville, NY 14221  
Greater Albany - Susan Dague, EΩ, Box 103,  
Ramont, NY 12009  
Ithaca - Contact PDA

Long Island - Peggy Berquist Palmer, Ψ<sup>Δ</sup>,  
(Charles) 16 Russet Ln., Huntington, NY 11743  
New York - Susan Wilk Harper, ΔN, 5200 Blvd.  
#6L, N. Bergen, NJ 07047

Rochester - Contact PDA

Schenectady - Ib Dingle Bartlet, BΨ, 1943  
Clifton Park Rd., Schenectady, NY 12309

T. Lawrence - Emily Long Fisher, BB<sup>Δ</sup>, (James)  
1, Box 179-A, Madrid, NY 13660

Syracuse - Contact PDA

Westchester County - Elaine Carleton Zucchi,  
(M, (Daniel) 161 Locust Rd., Briarcliff Manor,  
NY 10510

### North Carolina (Lambda)

Asheville Area - Helen Van Riper Joyce, Y,  
041 Blythe St. #1507, Hendersonville, NC  
28739

Charlotte - Maryann Spratt Green, EA, (Mark)  
432 Plaza Rd. Ext., Charlotte, NC 28212

Forsythe County - Marion Smith Faircloth, ΓΠ,  
(Brent) 1710 Academy St., Winston-Salem, NC  
27103

Guilford County - Teresa Sullivan, FO, P.O. Box  
29102, Greensboro, NC 27429

Piedmont-Carolina - Nancy Alyea Schiebel, ΔB,  
(H. Max) 1020 Anderson St., Durham, NC  
27705

Raleigh - Susan Dewey Montgomery, BZ,  
(Stephen) 1113 Tazwell Pl., Raleigh, NC 27612

### North Dakota (Omicron)

Fargo-Moorhead - Carol Gunkelman Fercho,  
ΓT, (Duane) 1210 N. 4th St., Fargo, ND 58102

Grand Forks - Donald MacDonald Schroeder,  
ΓT, (Elroy) 3720 Cherry St., J-37, Grand Forks,  
ND 58201

### Ohio (Gamma)

Akron - Debbie Maloy Weigand, K, (Fred) 989  
Jefferson Ave., Akron, OH 44302

\*Canton-Massillon - Katherine Kaiser Moore,  
ΓΩ, (Norman) 311 18th St. N.W., Canton, OH  
44703

Cincinnati - Diane Wasmer Kinsella, BP<sup>Δ</sup>,  
(John) 3106 Autumnridge Dr., Cincinnati, OH  
45251

Cleveland - Sally Walton House, ΓΔ, (William)  
3650 Townley Rd. Shaker Heights, OH 44122

Cleveland West Shore - Sarah Starkey  
Gilliland, P<sup>Δ</sup>, (Lawrence) 6547 Engle Rd.,  
Brookpark, OH 44142

Columbus - Jane Gurney Minton, BN, (Harvey)  
549 Poe Rd., Worthington, OH 43085

Dayton - Kathy Melancon Burger, ΔΓ, (Rick)  
1158 Katherine Dr., Beavercreek, OH 45385

\*Elyria - Sue Halsted Persons, ΔΓ, (Charles)  
302 Hamilton Cr., Elyria, OH 44035

\*Erie County - Michael McElwain Lenhart, K,  
(Don) 1205 Columbus Ave., Sandusky, OH  
44870

\*Hudson - Jacky Cole Hargreaves, A, (George)

7800 Holyoke Dr., Hudson, OH 44236

\*Middletown - Bettye Weber Fletcher, ΓA,  
(Robert) 3011 Court Louise, Middleton, OH  
45042

\*Newark-Granville - Catherine Coffman Fowle,  
ΓΩ, (Arthur) 230 E. College St., Granville, OH  
43023

\*Springfield - Antigone G. Petroff, Δ, (Samuel)  
539 Southwood, Springfield, OH 45504

Toledo - Ann Minwegen Lacksonen, BN, (James)  
4758 S. Crestridge, Toledo, OH 43623

\*Youngstown - Elizabeth Burnside Brooks, ΓP,  
(Lawrence) 121 Wolcott Dr., Youngstown, OH  
44512

### Oklahoma (Xi)

\*Ardmore - Susan Daniel Bahner, BΩ, 214 E.  
Southwest, Ardmore, OK 73401

\*Bartlesville Area - Amanda Jordan Simpson,  
K, (J. Michael) 1345 S.E. Evergreen Dr.,  
Bartlesville, OK 74006

\*Duncan Area - Barbara Slump Beebe, EB,  
(Steve) 3105 Springdale Ln., Duncan, OK 73533

\*Enid - Candy Cook Shaw, ΔΣ, 217 Laurel Pl.,  
Enid, OK 73703

\*Lawton-Ft. Sill - Kitty Grant Dutcher, BΘ,  
(Joseph) 811 N.W. 41st St., Lawton, OK 73505

\*Mid-Oklahoma - Janet Norton McMillin, ΔΣ,  
(Bob) 7 Janeway Pl., Shawnee, OK 74801

\*Muskogee - Ree Ann Johns, BΘ, (Robert) 809  
Kingsway, Muskogee, OK 74403

\*Norman - Nancy Braught Burton, BΘ, (Doug)  
2001 Riverside, Norman, OK 73072

Oklahoma City - Cindi Moree Rapp, ΔΣ,

BRITTANY LAHAINA WATERFORD BALI NICE SYDNEY TANGIER JUNEAU HONOLULU COPENHAGEN OSLO BARCELONA

## KAPPA KAPPA GAMMA

Invites You to Join Our

### ROYAL VIKING CRUISE OF ALASKA/CANADA

Prime Departure Date: July 28 - August 8, 1990

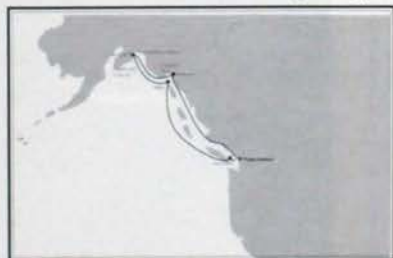
(Plus 2-Night Pre- or Post-Cruise Vancouver Package)

Cruise the line once again selected as number one by Travel/Holiday readers, and experience the sights and sounds of calving glaciers, soaring eagles, breaching whales, Mt. McKinley, the charm of Russian Sitka and Victoria, British Columbia. This all-inclusive cruise, including two nights in Vancouver, is attractively priced from \$2,980.00

**ITINERARY:** Vancouver to Inside Passage, Juneau, Glacier Bay, Gulf of Alaska, Seward, Anchorage (Optional Tour), Columbia Glacier, Hubbard Glacier, Sitka, Victoria, Vancouver.

**OPTIONAL TOUR:** Available from Seward, to include Denali and Fairbanks.

Cruise/Tour package is priced (exclusive of air add-on) from \$3,020.00.



### Special KKG 13-Night Package Included Features:

- Free Round-Trip Airfare
- \$50.00 Shipboard Credit
- Prepaid Gratuities
- Hosted Private Party
- Free two-Night Package in Vancouver

Space is Limited; Book Early to Ensure Most Desirable Cabin

For reservations and Information Call Margie Meade 1-800-KKG-ROSE Or Nancy Grow at 1-800-752-4946

ROYAL VIKING LINE

Bahamian Registry

VILLEFRANCHE HALIFAX SAN FRANCISCO ACAPULCO BARCELONA AMSTERDAM ISTANBUL TOKYO COPENHAGEN ROME

NEW YORK OSLO PIRAEUS LONDON PAPEETE COREU STOCKHOLM AUCKLAND

SINGAPORE ROME COPENHAGEN DUBROVNIK GEIRANGER HELSINKI HONG KONG



(James) 3217 Whipperwill Rd., Oklahoma City, OK 73120

\*Ponca City - Tammy Evans Hearst, ZZ, (Rich) 3562 Springwood 803, Ponca City, OK 74601

\*Stillwater - Melanie Wright Field, ΔΣ, (Mike) 1903 Skyline St., Stillwater, OK 74075

Tulsa - Sharon Jones Coffman, ΔΠ, (W. Thomas) 6601 S. Florence, OK 74136

#### Oregon (Pi)

Corvallis - Albany - Carol Frisch Rice, ΓM, 3635 NW Sylvan DR., Corvallis, OR 97330

\*Eugene - Lois McKenzie Sharpe, BΩ, (Michael) 1980 Jackson, Eugene, OR 97405

Portland - Leslie Rousseau Richter, BΩ, (Peter) 6655 S.W. Preslynn Dr., Portland, OR 97225

Salem - Elizabeth Hillis Rasmussen, H, (Donald) 560 22nd St. N.E., Salem, OR 97301

#### Pennsylvania (Beta)

\*Erie - Mary Alice Connor Taylor, ΓE, (Gary) 212 Fairway, Edinborough, PA 16412

\*Harrisburg - Carolyn Dietrich Savidge, ΔΦ, (Benjamin) 14 Amherst Dr., Camp Hill, PA 17011

\*Lancaster - Kendall Kincaid Stonerook, BM, (Thomas) 1401 Calyton Rd., Lancaster, PA 17603

\*Lehigh Valley - April Vari, EΩ, 1424 Center St., Bethlehem, PA 18018

Philadelphia - Sandra Keefe McMullin, BA, (David) 813 Malin Rd., Newton Square, PA 19073

Pittsburgh - Gail Berry Bevan, ΓA, (William) 4499 Birchwood Ln., Allison Park, PA 15101

Pittsburgh-South Hills - Margaret Janeck Carter, BY, 5911 Monongahela Ave., Bethel Park, PA 15102

\*State College - Ruth Johnson, ΔA, 1644 Woodledge Cr., State College, PA 16803

\*West Chester Area - Carolyn Hornor Wilson, BY, (Rodney) 903 Greene Countrie Dr., West Chester, PA 19380

#### Rhode Island (Rho)

\*Rhode Island - Susan Ridgway Esposito, ΓΨ, 515 Ocean Ave., Newport, RI 02840

#### South Carolina (Mu)

\*Charleston Area - Elizabeth Linder Little, EM, (Gil) 778 Chatter Rd., Mt. Pleasant, SC 29464

\*Clemson Area - Mary Leake Long, BX, (Needham) 1303 Northampton Rd., Anderson, SC 29621

\*Columbia Area - Julie Thompson, EM, 2301 Bob White Ln., W. Columbia, SC 29169

\*Greenville Area - Peggy Batson Luther, EM, (John) 203 Chancellor Dr., Simpsonville, SC 29681

\*Hilton Head - Marjorie Kerr Lease, P<sup>Δ</sup>, (Robert) 51 Purple Martin Ln., Hilton Head, SC 29926

#### Tennessee (Nu)

\*Chattanooga - Valerie Marie Von Canon, ΔY, 14 McBrien Rd., Chattanooga, TN 37411

\*Knoxville - Anne King Staples, EA, (Jerry) 7200 Rutgers Dr., Knoxville, TN 37919

Memphis - Carren Collins Audrain, ΓN, (Scott) 2500 Cedarwood, Germantown, TN 38138

Nashville - Jan Ellen Hylton, EA, 5236 Lance Dr. N.W., Knoxville, TN 37211

#### Texas (Theta)

\*Abilene - Nancy Calhoun Brock, EY, (Price) 845 Sayles Blvd., Abilene, TX 79605

\*Alice-Kingsville - Kathryn Kimball Privett, EP, 717 Santa Barbara, Kingsville, TX 78363

Amarillo - Jenny Henderson Babb, BΘ, (Charles) 2811 S. Crockett, Amarillo, TX 79109

Arlington - Sheron Baty Huhn, EA, (Richard) 3244 Kenilworth, Arlington, TX 76017

Austin - Katherine Kerr Rice, BΞ, (Tom) 2604 Stratford, Austin, TX 78746

\*Beaumont-Port Arthur - Patricia Green Edwards, BΞ, 780 N. 23rd St., Beaumont, TX 77706

\*Big Bend - Polly Lawhon Brooks, BΞ, (Conoly) 601 N. Rio, Ft. Stockton, TX 79735

\*Brownwood-Central Texas - Phyllis Laughlin Mason, BΞ, (Richard) 206 Quail Run, Brownwood, TX 76801

\*Bryan-College Station - Julie Cowley, EP, 130 Briar Cliff 221, Bryan, TX 77802

Corpus Christi - Suzanne Laird Anthony, EZ (Donald) 4418 Bluefield, Corpus Christi, TX 78413

Dallas - Marla Hays Boone, ΓΦ, (Michael) 351 University Blvd., Dallas, TX 75205

\*Denison-Sherman - Rebecca Shytles Brown BΞ, (Barrett) 1317 N. Hopson, Sherman, TX 75090

\*Denton-Lewisville - Patricia Alberts Langa ΔM, (Donald) 3211 Montecito Rd., Denton, TX 76205

El Paso - Louise Cook Walsh, ΔI, (Thomas) 625 Lakeway, El Paso, TX 79932

\*Ft. Bend County - Rita Shepherd Mesece, ΔΠ (Robert) 3106 Fairway, Sugarland, TX 77478

Ft. Worth - Barbara Bradley Riley, EA, (W Kent) 20 Valley Ridge Rd., Ft. Worth, TX 76107

\*Galveston - Joan Williams McLeod, BΞ, (E Douglas) 53 Cedar Lawn Cr., Galveston, TX 77551

\*Garland - Judy Jordan Eckert, BΞ, (Pete) 2817 Country Club Rd., Garland, TX 75043

\*Greater Katy Area - Karen Henderson Ledbetter, ΔΨ, (George) 15832 Oakendell Dr., Houston, TX 77084

\*Hill Country of Texas - Sylvia Faubion Dodson, EA, (Robert) 1225 Kamira Dr., Kerrville, TX 78028

Houston - Debbie Young Jones, Y, (Frank) 3402 Locke Ln., Houston, TX 77027

\*Houston Bay Area - Kathryn Kolb Johnson, BΞ, (George) 15411 Torry Pines, Houston, TX 77062

Houston Northwest - Irma Dusel Matteson, ΔN, (William) 6114 Apple Valley Ln., Houston, TX 77069

## 1989-90 ALUMNAE PANHELLENIC PRESIDENTS

Abilene, TX  
Amarillo, TX  
Columbus, IN  
Ft. Walton Bch, FL  
Fresno, CA  
Longview, TX  
Temple, TX

Vero Beach, FL  
Victoria, TX  
Whittier, CA

Judy Rose Sivley, EY—Baylor, (Mark)  
Heather Gallo, EA—Texas Christian  
Gilda Weber Wettschurack, ΓΔ—Purdue, (Joe)  
Jane Dale, Y—Northwestern  
Bo Rhodes Eriksen, BP<sup>Δ</sup>—Cincinnati, (Iver)  
Francye Willoughby Maledon, ΔI—LSU, (Elick)  
Ann Kimbriel Secrest, EA—Texas Christian,  
(Jerry)  
Mary Rogers, ΓΦ—Southern Methodist  
Myra Mitchem Starkey, EY—Baylor, (J. Taylor)  
Elizabeth Bartle Greulich, ΔX—San Jose State,  
(James)

"Alumnae Panhellenics have as their purpose TO INFORM fraternity women of current trends; TO PROMOTE the fraternity system; TO IMPROVE the Panhellenic image; and TO STIMULATE a continuing interest in Panhellenic affairs."

Kappa appreciates the time and efforts of so many of our alumnae who serve as a delegate or officer of their local Panhellenic, furthering the purpose of Alumnae Panhellenics.



Janice Morgan Silegman, ΓΘ—  
Drake, Long Beach Panhellenic  
President at dinner to install new  
officers.



Kingwood Area - Betsy Heinecke Birkett, ΔΨ, (Robert) 3434 Tree Ln., Kingwood, TX 77339

Longview - Linda Ryan Butter, ΓΦ, (Stephen) 119 Azalea, Longview, TX 75601

Lower Rio Grande Valley - Kay Bonneau Moffitt, BΞ, (James) 1601 Marigold, McAllen, TX 78501

Lubbock - Kris Howsley King, ΔΨ, (Randall) 516 77th Ave., Lubbock, TX 79424

Lufkin - Ellen O'Quinn Sorrell, EP, (Ryan) 206 Pyglass, Lufkin, TX 75901

Marshall - Rebecca Hall Palmer, EY, (Walter) 903 Bergstrom Pl., Marshall, TX 75670

McKinney-North Collin - Marthe Sherley Adams, EA, (John) Rt. 1, Box 226, Van Alstyne, TX 75095

Midland - Susan Barker South, ΓB, (Jan) 5109 Sunnyside, Midland, TX 79703

Montgomery County - Nancy Couch Battle, ΓΦ, (Thomas) P.O. Box 7582, The Woodlands, TX 77380

Northeast Tarrant County - Karen Gibbs Silva, ΔΨ, 3453 Whitney Way, Hurst, TX 96054

Odessa - Cheryl McAfee Glover, ΔΨ, (Richard) 906 W. 15th, Odessa, TX 79763

Richardson-Plano - Diana Hubbard Patterson, ΓN, (Don) 6905 Waggoner Pl., Dallas, TX 75230

San Angelo - Julie Massey, BΞ, 1909 Douglas Dr., San Angelo, TX 76904

San Antonio - Peggy Moffatt Halliburton, ΔI, (Nick) 183 Artillery Post Rd., San Antonio, TX 78234

Temple - Ann Kimbriel Secrest, EA, (Jerry) 509 W. Walker, Temple, TX 76501

Texarkana - Kathy Walker Beaumont, ΓN, (Larry) 18 Clay Ave., Texarkana, TX 75503

Tri-Cities - Kathleen Tobin Krueger, EP, (Robert) 298 E. Lincoln, New Braunfels, TX 78130

Tyler - Carol Caton Hay, ΓΦ, (Bruce) 5008 Atlanta, Tyler, TX 75703

Victoria Area - Rosemary Mahaffey Tucker, ΔΣ, (Tom) 206 Berkshire Ln., Victoria, TX 77904

Waco - Billie Hurst Walker, EY, (Jackson) 25 Pointview, Waco, TX 76710

Wichita Falls - Melissa Jones Kimbell, BΞ, (Tom) 240 Laurel Heights, San Antonio, TX 78212

Winter Garden - Donna Dellinger Ketchbaw, ΔΨ, (Thomas) P.O. Box 1630, Uvalde, TX 78802

#### Utah (Eta)

\*Ogden - Contact PDA

Salt Lake City - Mary Meadows, BΔ, P.O. Box 681060, Park City, UT 84068

#### Virginia (Lambda)

Charlottesville Area - Dana Knight Henderson, BY, (William) 895 Tanglewood Dr., Charlottesville, VA 22901

\*Hampton Roads - Shirley Richardson Fitzgerald, FK, (Aubrey) 5 Poindexter Pl., Newport News, VA 23606

\*Norfolk Area - Jane Markey Walker, Θ, (Donald) 1130 Hanover Ave., Norfolk, VA 23508

Northern Virginia - Margaret Powell Montgomery, FX, (C.P.) 1515 Twisittng Tree Ln., McLean, VA 22101

Richmond - Lissy Bianco Campbell, BX, (Robert) 4910 W. Franklin St., Richmond, VA 23226

Roanoke - Nancy Lips Clark, FI, (James) 225 Parkcrest Rd. S.W., Roanoke, VA 24014

\*Williamsburg - Patricia Taylor Russo, BN, (S.P.) 656 Fairfax Way, Williamsburg, VA 23185

#### Washington (Iota)

\*Everett - Colleen Hulbert Fisher, FH, (Chad) 1159 Bayview Edison Rd., Mt. Vernon, WA 98273

Lake Washington - Robin Kronstad Mc Connell, BΩ, (Patrick) 4532 192nd Ave. S.E., Issaquah, WA 98027

\*Olympia - Emily Breitenstein Cockrell, EI, (James) 2916 Hawthorne Pl., Olympia, WA 98506

Pullman - Kay Irwin Rowley, BK, S.E. 550 Derby St., Pullman, WA 99163

Seattle - Sally Habegger, EI, 5818 NE 70th St. #A209, Seattle, WA 98115

Spokane - Judith Baker Fife, FA, (A. Joe) N. 10505 Juanita Rd., Spokane, WA 99128

Tacoma - Marilee Mooney Glasman, FI, (Michael) 4925 88th Ave. W., Tacoma, WA 98467

\*Tri-City - Vivian Strangeland, IT, (Loren) 111 W. Peachtree, Richland, WA 99352

\*Vancouver - Joyce Ann Brooks, BM, 10101 N.E. 157th Ave., Vancouver, WA 98662

Walla Walla - Barbara Tuttle Knowlton, BK, (John) 1801 Sturm Ave., Walla Walla, WA 99362

Yakima - Joan Gammie Reid, FH, (Robert) 3911 Aaron Rd., Moxee, WA 98936

#### West Virginia (Lambda)

Charleston - Susan Harling Dawkins, BΞ, (Charles) 803 Churchill Dr., Charleston, WV 25314

\*Clarksburg Area - Shirley Tallman McClure, BY, (C. Richard) 402 James St., Bridgeport, WV 26330

\*Huntington - Germaine Lawson, ΔY, 99 13th St. #310, Huntington, WV 25701

Morgantown - Suzanne Hatcher Glock, BY, (Robert) 544 Westwood Ave., Morgantown, WV 26505

Parkersburg Area - Barbara Wood Salter, E, (Ronald) 90 Oakridge Dr., Parkersburg, WV 26101

\*Wheeling - Carolyn Ginter Dalzell, FII, 1203 6th St., Moundsville, WV 26041

#### Wisconsin (Eta)

\*Fox River Valley - Janet Sharp Turner, H, (Donald) 10 Lake Rd. W., Menasha, WI 54952

Madison - Marianne Spurrier Photinos, H, (Richard) 912 Menomonie Ln., Madison, WI 53704

Milwaukee East - Caroline Krider, ΓΩ, 1570 N. Prospect #1001, Milwaukee, WI 53202

Milwaukee West - Janice Birkenmeir Ratzel, Θ, (Larry) 810 Morningside Ln., Milwaukee, WI 53122

#### Wyoming (Eta)

Casper - Greta Spencer Forgey, FO, (Kevin) 7800 Salt Creek Rd., Box 17, Casper, WY 82601

Cheyenne - Kim Carlson Morris, FO, (Eugene) 4505 Carmel Dr., Cheyenne, WY 82009

\*Cody - Rusty Danniels Vannoy, FO, (C.R.) 2307 Carter Ave., Cody, WY 82414

Laramie - Susan Wilt Bulgrin, FO, (Paul) 907 S. 3rd St., Laramie, WI 82070

## HIRE A KAPPA!

The **HIRE-A-KAPPA** Guide to 1990 Graduates is now available from every Kappa alumnae group, chapter Advisory Board, and Fraternity Headquarters. The 1990 Guide lists graduates by chapter, college, major, desired career and location. If you are not in a position to hire, perhaps your husband, friends, or employer would be interested.

We have the opportunity to show our graduates that Kappa does not end with college. Kappa offers sisterhood throughout a lifetime. REMEMBER...if you are about to hire, why not **HIRE A KAPPA!**

**CHOICES**



the Career Program  
of Kappa Kappa Gamma





# CLASSIFIED

## Create the perfect gift with KAPPA NEEDLEWORK CHARTS

Three Kappa Angels .....(KG1) \$5.00  
Kappa Crest .....(KG2) \$5.00  
Iris Design, Circular .....(KG3) \$5.00  
Bodkin Enterprises  
3630 S. 76 St.; Lincoln, NE 68506

## PECANS FOR HOLIDAY GOODIES! Native Pecan Halves or Pieces

They are a great fund raiser for your  
alumnae group or chapter.  
Immediate Shipment. Call or write:  
Carden Pecan Co.; (316) 579-2665  
RR1 Box 1660; Chetopa, KS 67336

DO YOU WONDER what's happened to  
all your Kappa sisters over the years? Let us  
do a newsletter for you. Don't let 10 more  
years go by...call 913 384 0163 or write the  
News Exchange, 2200 W. 71st St., Prairie  
Village, KS 66208

WHEN YOU MOVE...Please put Head-  
quarters at the top of your list to notify. Al-  
most \$1500 is spent on return postage and  
address corrections for each issue of *The  
Key*!! Be sure to send the address label from  
your *Key*.

CLASSIFIED ADS in *The Key* are being ac-  
cepted from members of Kappa Kappa  
Gamma. For rates and further information  
contact Susan Schmitt; 4001 WETHER-  
BURN WAY; NORCROSS, GA 30092; (404)  
441-0946.

## FINE JEWELRY CONSULTANT Expert on Pearls, Precious Stones Design & Redesign of Fine Jewelry Estate Jewelry

Didi Boring, Boring and Company  
2443 Fillmore St. #330  
San Francisco, CA 94115  
(415) 922-0586

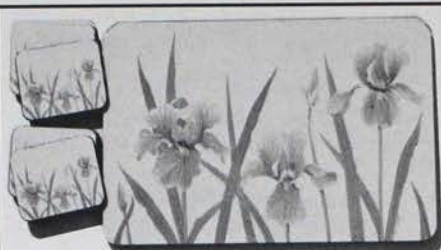
## Best of Friends, Etc. Cookbook

... Award-winning bestseller  
... Darlene Glantz Skees (Beta Phi 1958)  
... Author, publisher

The best gift to give yourself  
and a best friend!  
Ask about Kappa fundraising.

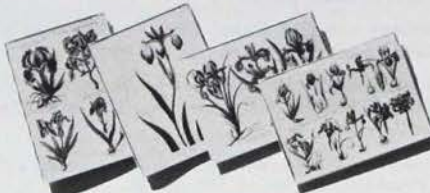
Order autographed copy now for the holidays ...  
Darlene Glantz Skees  
804—47th Street South  
Great Falls, MT 59405  
(406) 727-2811  
(\$12.95 Plus \$1.50 Postage)

(Portion of proceeds to Rose McGill Fund  
when ordered from this ad)



## IRIS TABLE SETTING

4 iris coated placemats .....\$29.80 (2.75)  
6 matching iris square coasters..\$10.50 (1.95)  
6 acrylic glasses (great for pool) .25.00 (2.10)  
8" coordinating acrylic hot plate..\$8.00 (1.95)



## BOTANICAL PRINT CARDS

16 BLUE IRIS FOLDING NOTES, 4 unique cover  
designs, 5 1/2" x 4 1/2" with envelopes....\$8.25 (1.95)

16 GREETING CARDS: 4 iris designs, 4 messages:  
"Happy Birthday," "Thanking of You," "Thank  
You," "Congratulations," Envs.....\$9.60 (1.95)

## KEY SOURCE (Kappa owned!)

Div. Need To Know Publ., P.O. 3458, Peoria, IL 61614  
800-441-3877 (309) 691-3877

Add freight (in brackets) MASTER CARD, VISA  
IL add tax Gift wrap \$2.75 FREE CATALOG  
more gifts for actives and alums — !



## MISSING A PIECE OF YOUR PATTERN?

Now you can replace  
pieces or add to your  
sterling silver collection  
— at less than retail prices.  
We specialize in new and used sterling  
flatware and holloware, with over 1,000  
patterns in stock. At 55-75% off retail. Call or  
write today for a free inventory of your  
pattern. We also buy sterling, with a careful  
appraisal for maximum value.

## Beverly Bremer SILVER SHOP

3164 Peachtree Rd., NE, Dept. KA11 • Atlanta, GA 30305  
Phone (404) 261-4009 • Hours 10-5, Mon.-Sat.

## CARRYE ORIGINALS P. O. Box 262; Richmond, VT 05477 Betsy Schenk - 802 434 2352

Wildlife art; hand tinted and limited edition repro-  
ductions; prints and originals paintings; jeweled  
victorian ornaments. Catalog \$2.00; catalog and 4  
slides \$5.00.

Kappas with present or recent experience  
in merchandising/catalog/direct mail sales  
who can offer advice to Fraternity mer-  
chandising program please contact Jen-  
nie Helderman, 209 Dogwood Circle,  
Gadsden, AL 35901

## HERITAGE MUSEUM POST CONVENTION TOUR JULY 1 & 2, 1990

### ATTENTION: ANTIQUE LOVERS AND MUSEUM GOERS

The Heritage Museum of  
Kappa Kappa Gamma is plan-  
ning a two day tour of museums  
and private collections in Dallas  
and Fort Worth immediately fol-  
lowing the close of the 1990 Gen-  
eral Convention.

Plans include a day in Fort  
Worth with tours of the famous  
Amon Carter Museum of West-  
ern Art and the Kimbell Muse-  
um. Both museums were found-  
ed by prominent Fort Worth cit-  
izens and, in addition to their  
outstanding collections, are  
works of art in themselves.

Included on the tour will be  
private homes in both Dallas and  
Fort Worth and Las Colinas, the  
unique urban center with its  
Venetian style canals, 21st centu-

ry elevated transportation sys-  
tem, and the majestic "Mustangs  
of Las Colinas," a larger than life  
equestrian sculpture. Dinner  
both evenings will be in private  
clubs.

Cost of the tour is \$275 plus a  
\$50 tax deductible donation to  
the Heritage Museum. This in-  
cludes hotel\*, transportation, en-  
trances, lunches, and dinners.

The trip is limited to 40 peo-  
ple. To reserve your place, send a  
\$25 deposit (refundable if the  
tour has reached capacity), made  
payable to HERITAGE MUSE-  
UM TOUR, 3825 Chevy Chase  
Drive, Houston, Texas 77019.

\*based on double occupancy



## HAVE YOU MOVED, CHANGED YOUR NAME OR CAREER?

Please provide Headquarters with current information.

Maiden Name \_\_\_\_\_ Chapter \_\_\_\_\_ Initiation year \_\_\_\_\_

Career: \_\_\_\_\_

Check if you are currently: Alumnae Officer ☐ House Board Officer ☐ Adviser ☐

This is notification of change in (check): Name ☐ Address ☐ Career ☐

Husband's name: \_\_\_\_\_

### Name and Address if Different from Mailing Label

Miss/Ms./Mrs. \_\_\_\_\_ Last \_\_\_\_\_ First \_\_\_\_\_ Middle/Maiden \_\_\_\_\_

Street Address \_\_\_\_\_

City \_\_\_\_\_ State \_\_\_\_\_ Zip \_\_\_\_\_ Foreign City/Country \_\_\_\_\_

Send to: KKT Fraternity Headquarters, P.O. Box 177, Columbus, OH 43216

## Burr, Patterson & Auld Company

### GREEK LETTER CHAPTER GUARD PINS

Please specify chapter letters \_\_\_\_\_

	10K	GK
29. Plain Single Letter	\$ 22.00	\$ 10.00
Plain Double Letter	27.50	12.00
Chased Single Letter	24.20	12.00
Chased Double Letter	29.70	15.00
Crown Pearl Single Letter	26.40	29.00
Crown Pearl Double Letter	60.50	44.00

NOTE: Guards available in ruby, sapphire, emerald and diamond stone combinations. Price available upon request.

### PINS

	10K	SS	GK
30. Monogram Recognition Pin	\$ —	\$ —	\$ 3.25
31. Recognition Key	16.00	—	4.00
32. Pledge Pin (Silver Finish)	—	—	2.00
33. Fleur-de-Lis Pin	36.30	18.00	17.00
Fleur-de-Lis Pin with Three Pearls in Bar (not shown)	38.50	20.00	19.00

### BRACELETS

	10K	10K	SS	GK
34. Key Bracelet with Coat of Arms	\$308.00	\$192.50	\$ 75.00	\$ 75.00

### BADGES

	10K
35. Plain Badge	\$ 38.00
36. Crown Pearl Badge	60.00
37. All Sapphire Badge	61.60
38. Sapphire & Pearl Alternating Badge	59.00
39. Diamond & Pearl Alternating Badge	125.00
40. Diamond & Sapphire Alternating Badge	135.00
41. All Diamond Badge	195.00

NOTE: For Enameled Letters, add \$1.00 to the above prices.

(GK) Goldplated is a 14K electroplate

(SS) Sterling Silver

MAIL PREPAID ORDERS TO:

**BURR, PATTERSON  
& AULD COMPANY, INC.**

Post Office Box 800

Elwood, IN 46036

(317) 552-7366

1-800-422-4348

### RINGS

Please specify ring size \_\_\_\_\_

	14K	10K	SS
1. Imperial Onyx Ring	\$165.00	\$121.00	\$ 50.00
2. Key Ring	132.00	93.50	35.00
3. Vertical Incised Letter Ring	132.00	93.50	35.00
4. Greek Letter Ring	165.00	121.00	50.00
5. Sweetheart Ring	110.00	82.50	35.00
6. Rainbow Marquis Ring	121.00	93.50	40.00
7. Crest Signet Ring	126.50	99.00	45.00
8. Raised Letter Remembrance Ring	132.00	93.50	35.00
9. Scottsdale Incised Key Ring	121.00	88.00	30.00
10. Mini Monogram Ring	88.00	66.00	30.00
11. Horizontal Oval Incised Letter Ring	132.00	93.50	35.00
12. Dangle Ring	66.00	44.00	20.00
13. Raised Letter Signature Ring	132.00	93.50	35.00
14. Philly Diamond Ring	264.00	220.00	—
15. Philly Alternating Pearl/Diamond Ring	231.00	187.00	—
16. Philly Crown Pearl Ring	165.00	121.00	—
17. Philly Alternating Sapphire/Diamond Ring	236.50	192.50	—
18. Philly Alternating Sapphire/Pearl Ring	176.00	132.00	—
19. Philly Sapphire Ring	181.50	137.50	—

### STICKPIN

	14K	10K	SS	GK
20. Monogram Recognition Stickpin	\$ —	\$ 33.00	\$ 20.00	\$ 16.00

### LAVALIERES

	14K	10K	SS	GK
21. Ingot	\$ 66.00	\$ 46.20	\$ 11.00	\$ 11.00
22. Heart	34.10	25.30	11.00	11.00
23. Circle	34.10	25.30	11.00	11.00
24. Key	33.00	24.20	11.00	7.00
25. Staggered letter	33.00	24.20	11.00	7.00
26. Mini Staggered Letter	22.00	14.30	11.00	7.00
27. Vertical Letter	33.00	24.20	11.00	7.00
28. Crest	40.70	27.50	11.00	11.00

NOTE: The prices above do not include necklace; add \$5.00 to above prices for 18 inch gold-filled or sterling silver necklace.

Orders for official badges must be prepared by the chapter corresponding secretary on official order forms obtained from Fraternity Headquarters. Prices are subject to state taxes for Indiana residents. 25% forfeiture for cancelled orders already in production.



Send all notices of address changes and member deaths to KKT Headquarters, PO Box 177 Columbus, OH 43216.

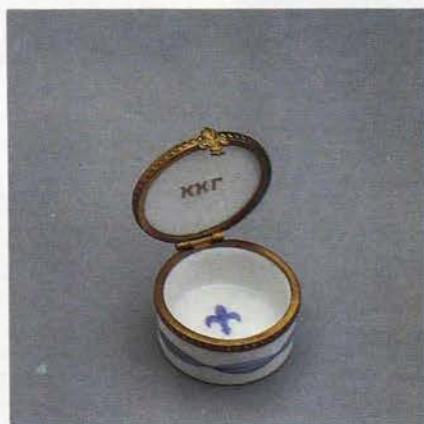
Nonprofit Organization  
U.S. POSTAGE  
PAID  
BIRMINGHAM, AL  
PERMIT NO. 182

Address Correction Requested

*S & D*  
*Fine Collectibles*



**Kappa Kappa Gamma Heart**—Sure to please with a pleasing combination of blue iris, fleur-de-lis and gold keys. Again, the hinge is handfitted with the little handmade fleur-de-lis clasp. Inside the top of the box you will find the Greek letters KKT with the blue iris. Approx. 2" long. **\$85<sup>00</sup>**



**Kappa Kappa Gamma Round Box**—The perfect piece to finish the collection with the gold key tied with a big blue bow and tiny blue iris. Handcrafted hinged top with handmade fleur-de-lis clasp. Inside top of box Greek letter KKT with the fleur-de-lis painted inside bottom of box. Each piece is signed by the artist. What a delight to be able to collect all three of these. **\$65<sup>00</sup>**

*Limoges*  
*Hand Painted*  
*Porcelain Boxes*

DESIGNED EXCLUSIVELY FOR  
KAPPA KAPPA GAMMA

S & D Fine Collectibles commissioned these boxes to be designed by a family of master craftsmen and artists in the south of France. These boxes are exquisite heirlooms to be enjoyed now and for many years to come.



**Kappa Kappa Gamma Trunk**—Handpainted in an adorable combination of blue iris, blue fleur-de-lis and tiny gold keys. The hinge is handfitted with tiny handmade fleur-de-lis clasp. Open and you will find the Greek letters KKT on the inside top of the box with the tiny gold key painted on the bottom. Perfect for holding her pin or necklace or just to enjoy. 2" long, 1½" tall. **\$75<sup>00</sup>**

Add \$3.50 for postage.  
Texas Residents add sales tax. Send check or money order to:

S & D Fine Collectibles  
P. O. Box 8048  
Tyler, Texas 75711

(If you should have a question you may call Shirley Dickerson (214) 593-5845 Monday through Friday.)